

1 **Intestinal function and transit associate with gut microbiota dysbiosis in cystic fibrosis**

2 Ryan Marsh ^a, Helen Gavillet ^a, Liam Hanson ^{a,b}, Christabella Ng ^{c,d}, Mandisa Mitchell-Whyte ^e, Giles Major ^c,
3 Alan R Smyth ^{c,d}, Damian Rivett ^b, Christopher van der Gast ^{a,f *}

4
5 ^aDepartment of Life Sciences, Manchester Metropolitan University, UK

6 ^bDepartment of Natural Sciences, Manchester Metropolitan University, UK

7 ^cSchool of Medicine, University of Nottingham, UK

8 ^dNIHR Nottingham Biomedical Research Centre, Nottingham University Hospitals NHS Trust and University
9 of Nottingham, Nottingham, UK

10 ^eWolfson CF Unit, Nottingham University Hospitals NHS Trust, Nottingham, UK

11 ^fDepartment of Respiratory Medicine, Salford Royal NHS Foundation Trust, Salford, UK

12

13 *Correspondence to Professor Chris van der Gast, Department of Life Sciences, Faculty of Science and
14 Engineering, John Dalton Building, Chester Street, Manchester, M1 5GD, UK; C.vanderGast@mmu.ac.uk

15

16 Keywords: gut microbiome, gut microbiota, dysbiosis, MRI, antibiotics, intestinal physiology

17

18

19 **Highlights**

- 20 • Faecal microbiota significantly differs between pwCF and healthy controls
- 21 • Key SCFA producers contributed to microbiota dissimilarity between groups
- 22 • Pulmonary antibiotic treatment heavily impacted gut microbiota
- 23 • Intestinal physiology and transit impacted satellite microbiota composition

24 **Abstract**

25 *Background:* Most people with cystic fibrosis (pwCF) suffer from gastrointestinal symptoms and are at risk of
26 gut complications. Gut microbiota dysbiosis is apparent within the CF population across all age groups, with
27 evidence linking dysbiosis to intestinal inflammation and other markers of health. This pilot study aimed to
28 investigate the potential relationships between the gut microbiota and gastrointestinal physiology, transit, and
29 health.

30
31 *Study Design:* Faecal samples from 10 pwCF and matched controls were subject to 16S rRNA sequencing.
32 Results were combined with clinical metadata and MRI metrics of gut function to investigate relationships.

33
34 *Results:* pwCF had significantly reduced microbiota diversity compared to controls. Microbiota compositions
35 were significantly different, suggesting remodelling of core and rarer satellite taxa in CF. Dissimilarity between
36 groups was driven by a variety of taxa, including *Escherichia coli*, *Bacteroides spp.*, *Clostridium spp.*, and
37 *Faecalibacterium prausnitzii*. The core taxa were explained primarily by CF disease, whilst the satellite taxa
38 were associated with pulmonary antibiotic usage, CF disease, and gut function metrics. Species-specific
39 ordination biplots revealed relationships between taxa and the clinical or MRI-based variables observed.

40
41 *Conclusions:* Alterations in gut function and transit resultant of CF disease are associated with the gut
42 microbiota composition, notably the satellite taxa. Delayed transit in the small intestine might allow for the
43 expansion of satellite taxa resulting in potential downstream consequences for core community function in the
44 colon.

45 **1. Introduction**

46 Cystic fibrosis (CF) associated respiratory infections are the major cause of disease morbidity and mortality.
47 However, a number of gastrointestinal (GI) problems may also arise, limiting the quality of life, including
48 meconium ileus at birth, distal intestinal obstruction syndrome, small intestinal bacterial overgrowth (SIBO),
49 increased risk of malignancy, and intestinal inflammation [1,2]. It is therefore unsurprising that people with CF
50 experience persistent GI symptoms [3,4] with “how can we relieve gastrointestinal symptoms in people with
51 CF?” a top priority question for research [5].

52

53 Microbial dysbiosis at the site of the GI tract in CF patients has been described, with changes evident from
54 birth through to adulthood [6–8]. Moreover, the extent of this divergence from healthy microbiota, initially due
55 to loss of cystic fibrosis transmembrane conductance regulator (CFTR) function [9], is further compounded by
56 routine treatment with broad spectrum antibiotics [10]. The reshaping of the gut microbiota may have functional
57 consequences that could further impact on patients. These include the reduction of taxa associated with the
58 production of short-chain fatty acids (SCFAs) which play key roles in modulating local inflammatory responses
59 and promoting gut epithelial barrier integrity [11–13]. Furthermore, studies of microbiota dysbiosis in CF have
60 demonstrated its relationship with intestinal inflammation [14], intestinal lesions [15], and increased gene
61 expression relating to intestinal cancers [16]. Whilst many of these clinical parameters have ties to gut
62 microbiota changes, they remain understudied exclusively past childhood despite advances in less invasive
63 approaches to investigate CF gut physiology and function [17]. Our group has recently published on the use
64 of magnetic resonance imaging (MRI) to assess gut transit time, along with other parameters, in adolescents
65 and adults [18].

66

67 In this pilot study, we linked those MRI physiology metrics and clinical metadata directly to high-throughput
68 amplicon sequencing data identifying constituent members of the gut microbiota, to explore the relationships
69 between microbial dysbiosis, intestinal function and clinical state.

70 **2. Materials and methods**

71 *2.1. Study participants and design*

72 Twelve people with CF, homozygous for p.Phe508del along with 12 healthy controls, matched by age and
73 gender, were recruited from Nottingham University Hospitals NHS Trust. Participants were asked to provide
74 stool samples when attending for MRI scanning, with the study design and MRI protocols described previously
75 [18]. A patient clinical features were also recorded upon visitation (Table 1), including a three-day food diary
76 preceding sample collection (Table S1). Further descriptive statistics of the study population can be found in
77 the Supplementary Materials, including MRI metrics (Table S2), and summary statistics on diet (Tables S3-
78 S6). Faecal samples were only obtained from ten individuals in each group. Written informed consent, or
79 parental consent and assent for paediatric participants, was obtained from all participants. Study approval was
80 obtained from the West Midlands Coventry and Warwickshire Research Ethics Committee (18/WM/0242). All
81 stool samples obtained were immediately stored at -80°C prior to DNA extraction to reduce changes before
82 downstream community analysis [19].

83

84 *2.2. Targeted amplicon sequencing*

85 DNA from dead or damaged cells, as well as extracellular DNA was excluded from analysis via cross-linking
86 with propidium monoazide (PMA) prior to DNA extraction, as previously described [20]. Next, cellular pellets
87 resuspended in PBS were loaded into the ZYMO Quick-DNA Fecal/Soil Microbe Miniprep Kit (Cambridge
88 Bioscience, Cambridge, UK) as per manufacturer's instructions, with the following amendments: ZR
89 BashingBead Lysis Tubes were replaced with standard 1.5 mL Eppendorf tubes loaded with ZYMO Beads for
90 mechanical homogenisation with the use of a Retsch Mixer Mill MM 400 (Retsch, Haan, Germany). Samples
91 were homogenised for 2 minutes at 17.5/s frequency. Following DNA extraction, approximately 20 ng of
92 template DNA was then amplified using Q5 high-fidelity DNA polymerase (New England Biolabs, Hitchin, UK)
93 using a paired-end sequencing approach targeting the bacterial 16S rRNA gene region (V4-V5). Primers and
94 PCR conditions can be found in the Supplementary Materials. Pooled barcoded amplicon libraries were
95 sequenced on the Illumina MiSeq platform (V3 Chemistry).

96

97 *2.3. Sequence processing and analysis*

98 Sequence processing and data analysis were initially carried out in R (Version 4.0.1), utilising the package
99 DADA2 [21]. The full protocol is detailed in the Supplementary Materials. Raw sequence data reported in this

100 study has been deposited in the European Nucleotide Archive under the study accession number
101 PRJEB44071.

102

103 *2.4. Faecal Calprotectin*

104 Stool was extracted for downstream assays using the ScheBo® Master Quick-Prep (ScheBo Biotech, Giessen,
105 Germany), according to the manufacturer instructions. Faecal calprotectin was analysed using the Bühlmann
106 fCAL ELISA (Bühlmann Laboratories Aktiengesellschaft, Schönenbuch, Switzerland), according to the
107 manufacturer's protocol.

108

109 *2.5. Statistical Analysis*

110 Regression analysis, including calculated coefficients of determination (r^2), degrees of freedom (df), F -statistic
111 and significance values (P) were calculated using XLSTAT v2021.1.1 (Addinsoft, Paris, France). Fisher's alpha
112 index of diversity and the Bray-Curtis index of similarity were calculated using PAST v3.21 [22]. Significant
113 differences in microbiota diversity were determined using Kruskal-Wallis performed using XLSTAT. Analysis
114 of similarities (ANOSIM) with Bonferroni correction was used to test for significance in microbiota composition
115 and was performed in PAST. Similarity of percentages (SIMPER) analysis, to determine which taxa contributed
116 most to compositional differences between groups, was performed in PAST.

117

118 Redundancy analysis (RDA), was performed in CANOCO v5 [23]. Following the determination of clinical
119 variables significantly explanatory for microbiome composition, RDA biplots with these variables were plotted
120 in PAST v3.21. Statistical significance for all tests was deemed at the $p \leq 0.05$ level. Supplementary
121 information, including metadata, are available at figshare.com under
122 <https://doi.org/10.6084/m9.figshare.15073797.v1> and <https://doi.org/10.6084/m9.figshare.15073899.v1>

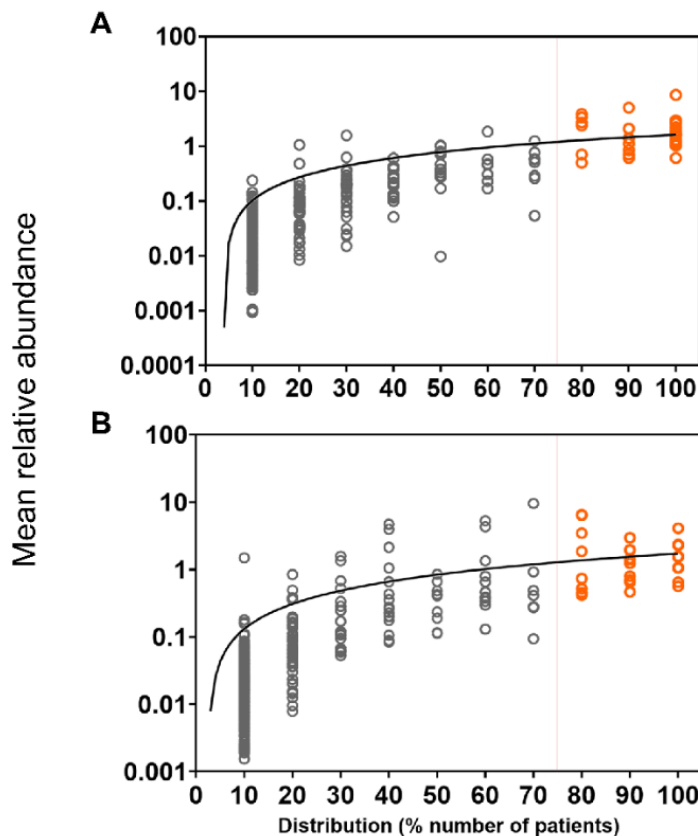
123 **Table 1** Clinical characteristics of study participants.

Study I.D	Sex	Age (Years)	Group	Pancreatic Status	Calprotectin (µg/g)	FEV1%	BMI	Antibiotic Usage				
								P	A	M	β	S
365	M	12-16	CF	PI	4.22	87	16.18	-	-	-	+	-
431	M	12-16	HC	PS	2.44	-	17.95	-	-	-	-	-
128	M	12-16	CF	PI	27.59	97	17.72	+	-	-	-	-
296*	M	12-16	HC	PS	-	-	23.44	-	-	-	-	-
643	M	12-16	CF	PI	9.77	90	21.83	-	-	+	-	-
159	M	12-16	HC	PS	2.72	-	23.49	-	-	-	-	-
297	M	12-16	CF	PI	27.61	126	20.83	-	-	-	-	-
947*	M	12-16	HC	PS	-	-	20.94	-	-	-	-	-
617	F	12-16	CF	PI	21.15	72	18.42	-	-	+	+	+
964	F	12-16	HC	PS	12.71	-	19.15	-	-	-	-	-
167	M	17-21	CF	PI	7.37	99	20.63	-	-	-	-	-
673	M	17-21	HC	PS	0.94	-	20.34	-	-	-	-	-
279	F	17-21	CF	PI	27.32	66	20.87	-	-	+	-	-
205	F	17-21	HC	PS	3.84	-	31.91	-	-	-	-	-
596	F	17-21	CF	PI	14.05	61	21.91	-	-	+	-	-
152	F	17-21	HC	PS	4.22	-	21.26	-	-	-	-	-
610*	M	23-27	CF	PI	-	66	18.64	-	+	+	-	-
548	M	23-27	HC	PS	3.56	-	24.49	-	-	-	-	-
619*	F	23-27	CF	PI	-	60	19.27	-	-	-	-	-
501	F	23-27	HC	PS	7.19	-	28.66	-	-	-	-	-
259	M	28-32	CF	PI	28.30	61	20.21	-	-	+	+	-
986	M	28-32	HC	PS	4.96	-	22.64	-	-	-	-	-
681	F	33-37	CF	PI	11.79	88	21.71	+	-	+	-	-
749	F	33-37	HC	PS	3.00	-	19.57	-	-	-	-	-

124 Subjects marked with an asterisk* indicate those who failed to produce a stool sample for subsequent metagenomic and metabolomic analysis and thus were excluded from downstream analyses. All
 125 participants with CF had the gene mutation p.Phe508del/p.Phe508del, with pancreatic insufficiency but no CF-related diabetes. For antibiotic usage, '+' indicates routine administration of the given antibiotic
 126 class prior to sampling. Abbreviations: FEV1 – Percent predicted forced expiratory volume in 1 second, BMI – Body mass index, P – Polymyxin, A – Aminoglycoside, M – Macrolide, β – β-lactam, S –
 127 Sulfonamide. Asterisks denote participants who did not provide any stool samples upon visitation, and thus were excluded from downstream microbiota analysis.

128 3. Results

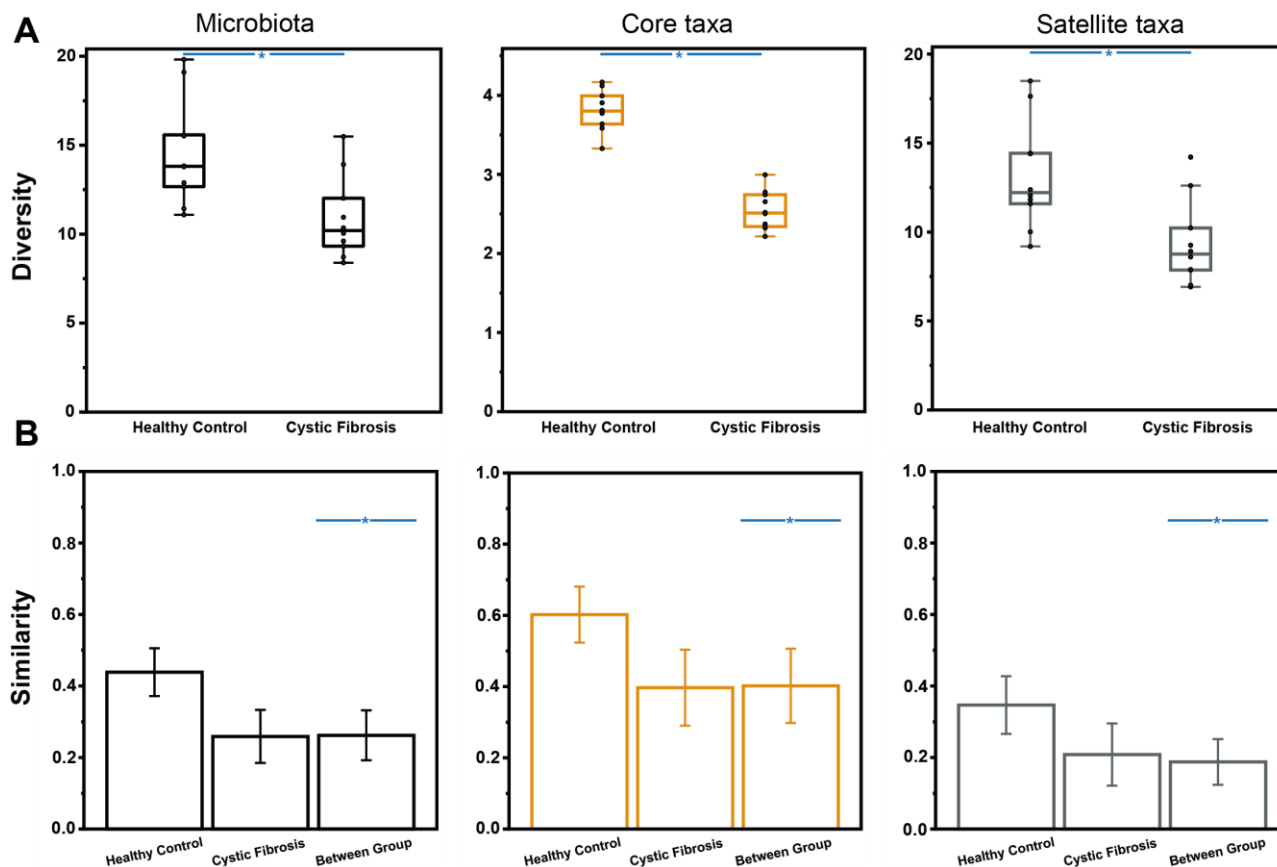
129 For both healthy control and CF groups, bacterial taxa were partitioned into core or satellite based on their
130 prevalence and relative abundance as depicted in (Fig. 1). Within the healthy control group, 30 taxa were core
131 constituting 60.5 % of the total abundance, with the remainder accounted for by 386 satellite taxa. In the CF
132 group, 22 core taxa represented 34.7 % of the abundance, with 323 satellite taxa constituting the remainder.
133 Core taxa are listed in Table S7. The whole, core, and satellite microbiota demonstrated similar patterns in
134 diversity, whereby there was significantly reduced diversity in the CF group (Fig. 2A, Table S8).



135 **Figure 1** Distribution and abundance of bacterial taxa across different sample groups. (A) Healthy control. (B)
136 Cystic fibrosis. Given is the percentage number of patient stool samples each bacterial taxon was observed to
137 be distributed across, plotted against the mean percentage abundance across those samples. Core taxa are
138 defined as those that fall within the upper quartile of distribution (orange circles), and satellite taxa (grey circles)
139 defined as those that do not, separated by the red vertical line at 75% distribution. Distribution-abundance
140 relationship regression statistics: (a) $r^2 = 0.50$, $F_{1,414} = 407.3$, $P < 0.0001$; (b) $r^2 = 0.29$, $F_{1,343} = 137.3$, $P <$
141 0.0001 . Core taxa are listed in Table S7.
142
143

144 Within-group core microbiota similarity was higher within the healthy control group, with a mean similarity (\pm
145 SD) of 0.60 ± 0.08 compared to 0.40 ± 0.11 for the CF group (Fig. 2B). As expected, satellite taxa similarity
146 within groups was much lower than for the core but was also significantly reduced in CF compared to controls,
147 at 0.35 ± 0.08 and 0.21 ± 0.09 for the healthy control and CF group respectively. ANOSIM testing determined
148 the whole microbiota, core, and satellite taxa of the CF group were significantly different in composition
149 compared to healthy controls (Fig. 2B, Table S9). SIMPER analysis was implemented to reveal which taxa

150 were responsible for driving this dissimilarity (Table 2). Of the taxa contributing to > 50% of the differences
 151 between healthy control and CF groups, those within the genus *Bacteroides* were represented most.
 152 *Escherichia coli* contributed most towards the differences between groups, despite satellite status, followed by
 153 *Bacteroides* sp. (OTU 3), *Clostridium* sp. (OTU 5), *Faecalibacterium prausnitzii*, and *Bacteroides fragilis*.



154

155 **Figure 2** Microbiome diversity and similarity compared across healthy controls and cystic fibrosis samples.
 156 Whole microbiota (black plots) and partitioned data into core (orange plots) and satellite taxa (grey plots) are
 157 given. **(A)** Differences in Fisher's alpha index of diversity between healthy controls and cystic fibrosis samples.
 158 Black circles indicate individual patient data. Error bars represent 1.5 times inter-quartile range (IQR). Asterisks
 159 between groups denote a significant difference in diversity following use of Kruskal-Wallis tests ($P < 0.001$).
 160 Summary statistics are provided in Table S8. **(B)** Microbiome variation measured within and between sampling
 161 groups, utilising the Bray-Curtis index of similarity. Error bars represent standard deviation of the mean.
 162 Asterisks indicate significant differences between sampling groups following the use of one-way ANOSIM
 163 testing ($P < 0.001$). Summary statistics are provided in Table S9.

164 **Table 2** Similarity of percentage (SIMPER) analysis of microbiota dissimilarity (Bray-Curtis) between Healthy
165 Control (HC) and Cystic Fibrosis (CF) stool samples.

Taxa	%Relative abundance		Av. Dissimilarity	% Contribution	Cumulative %
	Mean HC	Mean CF			
<i>Escherichia coli</i>	1.84	9.54	4.72	6.39	6.39
<i>Bacteroides 3</i>	3.84	4.69	3.36	4.55	10.94
<i>Clostridium 5</i>	0.77	6.44	3.09	4.18	15.13
<i>Faecalibacterium prausnitzii</i>	8.56	2.95	2.99	4.05	19.18
<i>Bacteroides fragilis</i>	1.02	5.29	2.75	3.73	22.90
<i>Bacteroides dorei</i>	3.32	4.31	2.52	3.42	26.32
<i>Eubacterium rectale</i>	5.03	1.35	2.18	2.95	29.27
<i>Romboutsia timonensis</i>	1.24	3.95	2.15	2.91	32.18
<i>Bacteroides uniformis</i>	2.72	4.09	1.62	2.20	34.38
<i>Dialister invisus</i>	1.00	3.45	1.61	2.19	36.57
<i>Bacteroides vulgatus</i>	2.37	2.14	1.56	2.11	38.68
<i>Ruminococcus bromii</i>	2.69	0.42	1.24	1.68	40.36
<i>Alistipes putredinis</i>	2.08	0.06	1.02	1.38	41.74
<i>Bacteroides coprocola</i>	1.56	0.92	1.01	1.37	43.11
<i>Fusicatenibacter saccharivorans</i>	2.62	0.8	1.00	1.36	44.47
<i>Streptococcus 18</i>	0.26	1.95	0.88	1.19	45.66
<i>Blautia luti</i>	2.93	2.31	0.86	1.16	46.82
<i>Oscillibacter ruminantium</i>	1.90	0.27	0.84	1.14	47.96
<i>Clostridium perfringens</i>	0.00	1.58	0.79	1.07	49.03
<i>Parabacteroides distasonis</i>	1.38	1.85	0.77	1.05	50.08

166 Taxa identified as core are highlighted in orange, whereas satellite taxa are highlighted in grey. Mean relative abundance (%) is also
167 provided for each group. Percentage contribution is the mean contribution divided by the mean dissimilarity across samples (73.79%).
168 Cumulative percent does not equal 100% as the list is not exhaustive. Given the sequencing length of 16S gene regions, taxon
169 identification should be considered putative.

170

171 Redundancy analysis (RDA) was used to relate variability in microbiota composition to associated MRI metrics
172 and clinical factors (Table 3). Pulmonary antibiotics and CF disease significantly explained the most variance
173 across the whole and satellite microbiota. Measurements of intestinal transit and function contributed to the
174 whole microbiota variance, albeit to a lesser extent, with variation in OCTT and SWBC also contributing to
175 satellite taxa variance alongside faecal calprotectin levels. In the core taxa analysis, the presence of CF
176 disease was the dominant factor in significantly explaining the compositional variability, followed by sex and
177 body mass index (BMI).

178

179
180

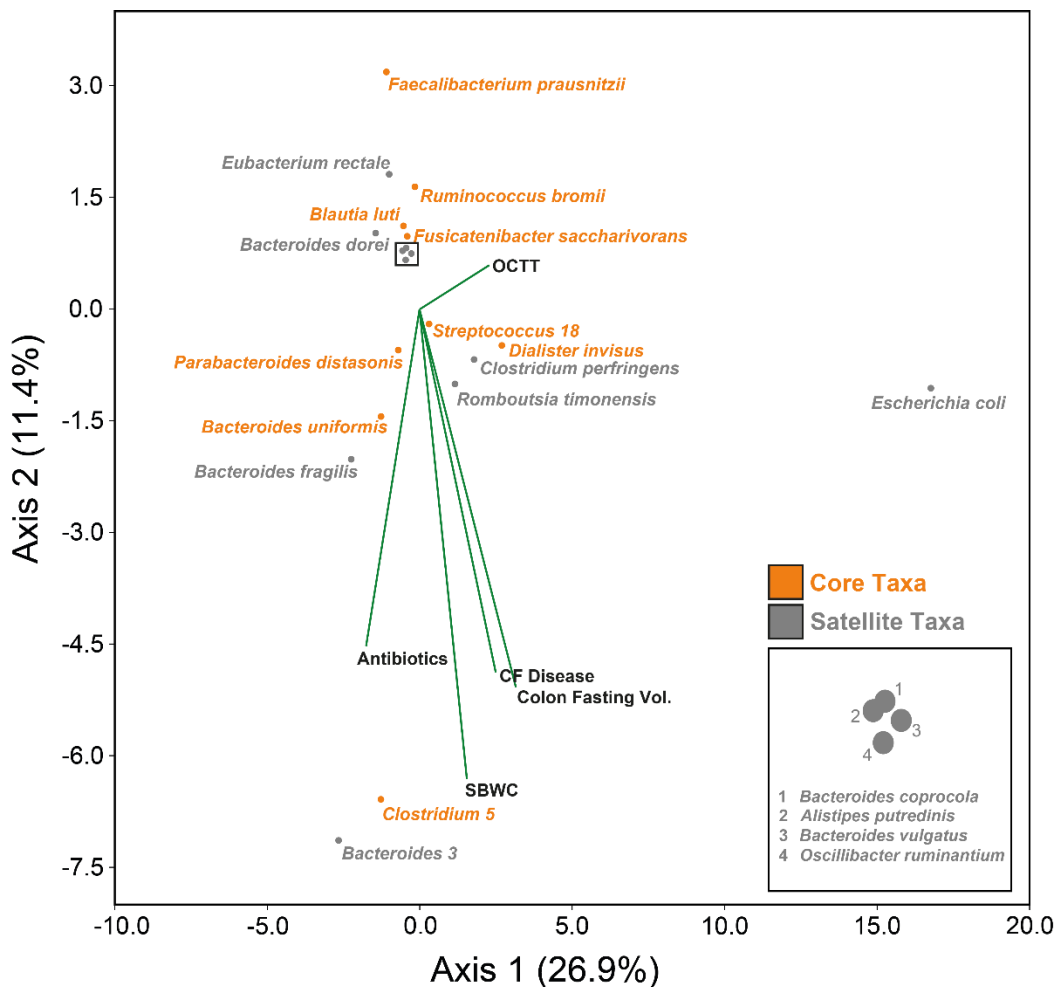
Table 3 Redundancy analysis to explain percent variation in whole microbiota, core taxa and satellite taxa between all subjects from significant clinical variables measured.

	Microbiota			Core taxa			Satellite taxa		
	Var. Exp (%)	pseudo- <i>F</i>	<i>P</i> (adj)	Var. Exp (%)	pseudo- <i>F</i>	<i>P</i> (adj)	Var. Exp (%)	pseudo- <i>F</i>	<i>P</i> (adj)
Antibiotics	21.5	5.4	0.002				27.1	7.3	0.002
BMI				7.0	2.0	0.042			
Calprotectin							5.9	1.8	0.050
CF Disease	10.9	2.2	0.002	28.9	7.3	0.002	10.3	2.1	0.006
Colon Fasting Vol.	7.5	2.0	0.016						
OCTT	7.4	2.1	0.012				6.7	1.9	0.046
SBWC	5.6	1.7	0.048				7.2	2.4	0.048
Sex				7.9	2.1	0.010			
Total	52.9			43.8			57.2		

181
182
183

Var. Exp (%) represents the percentage of the microbiota variation explained by a given parameter within the redundancy analysis model. *P* (adj) is the adjusted significance value following false discovery rate correction. Antibiotics is the presence/absence of recurrent antibiotic regimes for a given patient. BMI – Body mass index, Colon Fasting Vol – Colon volume at baseline corrected for body surface area, OCTT – Oro-caecal transit time, Antibiotics, SBWC – Small bowel water content corrected for body surface area.

184 A species redundancy analysis biplot (RDA) was constructed to investigate how significant clinical variables
 185 from the whole microbiota direct ordination approach explained the relative abundance of taxa from the
 186 SIMPER analysis (Fig. 3). Certain taxa grouped away from many of the significant clinical variables shown in
 187 a similar manner. This effect was most pronounced for *F. prausnitzii*, *Eubacterium rectale* and *Ruminococcus*
 188 *bromii*. A combination of clinical factors, including CF disease, increased fasting colonic volume, increased
 189 SBWC and prolonged OCTT, explained the variance observed in relative *E. coli* abundance, whilst a more
 190 modest effect was observed towards *Streptococcus* sp. (OTU 18), *Dialister invisus*, *Clostridium perfringens*
 191 and *Romboutsia timonensis*. Species of *Bacteroides*, which was the most common genus within the top-
 192 contributing SIMPER analysis, were explained by the clinical variables to high variability.



193
 194 **Fig. 3** Redundancy analysis species biplots for whole microbiota. The 20 taxa contributing most to the
 195 dissimilarity (cumulatively > 50%) between healthy and cystic fibrosis groups from the SIMPER analysis (Table
 196 2) are shown independently of the total number of ASVs identified (345). Orange circles represent core taxa
 197 within the CF group, whilst grey circles denote satellite taxa. Biplot lines depict clinical variables that
 198 significantly account for the total variation in taxa relative abundance within the whole microbiota analysis at
 199 the $p \leq 0.05$ level as seen in Table 3, with species plots indicating the strength of explanation provided by the
 200 given clinical variables. 'OCTT' – Oro-caecal transit time, 'SBWC' – Small bowel water content corrected for
 201 body surface area, Colon Fasting Volume corrected for body surface area, CF disease. The percentage of
 202 microbiome variation explained by each axis is given in parentheses.

203 4. Discussion

204 In this pilot study, we investigated the relationships between clinical factors, MRI markers of GI function and
205 the composition of faecal bacterial microbiota. We have shown that it is possible to partition the gut microbiota
206 into core and satellite taxa to investigate potential community functions and relationships, with the notion that
207 the core constituents contribute to the majority of functionality exhibited by the community [20,24]. As to be
208 expected, the core taxa made up most of the abundance within the healthy control group. Whilst many taxa
209 were also commonly represented in the CF group, the latter was dominated in abundance by the satellite taxa.
210 Our findings of reduced diversity across the whole, core, and satellite microbiota are in agreement with
211 previous findings described within the CF gut [7,8,10]. Along with reduced within group similarity in CF
212 compared to healthy controls across all microbiota partitions, this suggests a perturbed community harbouring
213 greater instability, less subsequent resilience, and inherent challenges to the colonisation and establishment
214 of normal commensals. CF associated factors such as varied antibiotic usage will contribute to this reduced
215 similarity, further augmented by the wide age range of pwCF within this study and variation across lifestyle
216 factors. The combination of the aforementioned may elicit stochastic community disruption and increased inter-
217 individual variation as observed across other mammalian microbiomes [25].

218
219 At the surface, a reduction in the number of taxa labelled as core within the CF group hinted at perturbation
220 and restructuring, further evidenced by the occurrence of taxa exclusively core to this group. This included
221 species of *Streptococcus*, *Pseudomonas*, *Veillonella*, and *Enterococcus*, all of which were significantly more
222 abundant in the CF group (Table S7), and of which are implicated in both CF lung and gut microbiomes
223 [8,9,24,26–28]. The concept of the “gut-lung axis” in CF arises from the direct translocation of the respiratory
224 microbiota from sputum swallowing to the gut [29], but also the emergence of species in the gut prior to the
225 respiratory environment [27]. This apparent bidirectionality is further supported by the administration of oral
226 probiotics to decrease pulmonary exacerbations in CF [30]. Aside from sputum swallowing, the increase in
227 *Streptococcus* and *Veillonella* here could reflect an increased availability of simple carbohydrates from the
228 observed dysmotility of the gut [18]. *Streptococci* are well equipped with numerous genes for rapid
229 carbohydrate degradation in an environment usually fluctuating in substrate availability, with fermentation-
230 derived lactic acid supporting the expansion of *Veillonella* species in the small intestine [31].

231 *E. coli* contributed most to the dissimilarity between healthy and CF groups despite maintaining satellite status
232 throughout both the healthy and CF groups, seemingly resultant of the wide age range of our study participants,
233 of which the higher relative abundances were observed in the younger adolescent patients (Table 2). In

234 childhood studies, a significantly higher relative abundance of *Proteobacteria* is often reported in relation to
235 dysbiosis, with *E. coli* abundance associating with poor growth outcomes and intestinal inflammation [32–34].
236 Other notable taxa contributing to the dissimilarity observed between groups encompassed a variety of key
237 species associated with SCFA production in the colon. This included *F. prausnitzii* and *E. rectale*, both of
238 which were significantly decreased in abundance within the CF group, but also *R. bromii* and *B. luti*. These
239 taxa have all been previously reported to decrease in the CF gut [8,26,35] alongside other inflammatory
240 conditions [36]. There were also notable contributions to the dissimilarity between groups by *Clostridium* sp.
241 (OTU 5) (significant difference in relative abundance) and *D. invisus* (not significant). *Clostridium* OTU 5
242 aligned exclusively with cluster I members at the 97% threshold, of whom demonstrate the capacity to generate
243 lactate, acetate, propionate, and butyrate via carbohydrate fermentation [37], whilst *D. invisus* is an
244 intermediary fermenter capable of both acetate and propionate production. This may lend support to the theory
245 that alternate species can retain some functional redundancy in the presence of perturbation to the local
246 community in the CF gut [38].

247

248 Variance across the whole microbiota and satellite taxa was significantly explained by the use of antibiotics
249 (Table 3), of which most pwCF are administered on a routine basis to suppress lung infection [39]. The
250 occurrence of both OCTT and SBWC accounting for significant explanation in both the whole microbiota and
251 satellite, but not core taxa analysis, underpins the strong impact of gut physiology and transit on the microbiota
252 in CF. Faecal calprotectin also explained the variance across the satellite taxa, and has been associated with
253 increased abundances of *Escherichia*, *Streptococcus*, *Staphylococcus* and *Veillonella*, of which contained
254 satellite species significantly increased in our CF group [26,40]. *Acidaminococcus* sp. have also associated
255 with increased faecal calprotectin levels [28], with *Acidaminococcus intestini* another constituent of the CF
256 satellite microbiota that was not present in healthy controls (data not shown). The core taxa was only largely
257 explained by the presence of CF disease itself, perhaps relating to the direct disruption of CFTR function which
258 alone can influence changes in the microbiome [40].

259

260 Perhaps unsurprisingly, the species ordination biplots of the taxa from SIMPER analysis demonstrated
261 clustering of the key SCFA producers mentioned previously away from the significant disease-associated
262 clinical factors, with antibiotic usage and transit metrics previously shown to reduce the abundance of such
263 taxa [14,41]. Similarly affected were taxa from genera that are associated with better outcomes in other

264 similarly pro-inflammatory intestinal environments, such as Crohn's disease or ulcerative colitis , including
265 *Oscillibacter* and *Fusicaterbacter* [42,43].

266

267 *C. perfringens* has been associated with disease exacerbation in ulcerative colitis [36], SIBO in the CF mouse
268 small intestine [44] and increased deconjugation of bile salts leading to further fat malabsorption by the host
269 [45]. Here it was completely absent from our healthy control group, whilst in the CF group was found to
270 associate with a variety of CF-induced clinical factors as well as OCTT. Also strongly associating with OCTT
271 and impacted substantially more, was *E. coli*. Increased bacterial load relates to slower transit within the CF
272 mouse small intestine [45]. Concurrently with the observed increase in SWBC reported prior [18], this in theory
273 allows for the expansion of such facultative anaerobes in the small intestine that could potentially affect
274 downstream community dynamics and functional profiles in the colon, given that PMA treatment was utilised
275 to select for viable living taxa from faecal sampling.

276

277 Although dietary profiles were similar between groups (Tables S3-6) and did not contribute to significant
278 variation in the microbiota, increased fat intake to meet energy requirements is a staple of the CF diet [46].
279 The infant gut metagenome demonstrates enrichment of fatty acid degradation genes [32] whilst CF-derived
280 *E. coli* strains exhibit improved utilisation of exogenous glycerol as a growth source [47]. Finally, the genus
281 *Bacteroides*, which has been reported to both increase and decrease within CF disease across different age
282 groups [8,9,14], displayed high variability within the species ordination biplot (Fig. 3), perhaps resultant of the
283 varying antimicrobial susceptibility within the genus [48].

284

285 We acknowledge the small sample size of this pilot study limits the power of specific analyses, with the absence
286 of within-group direct ordination approaches which would have allowed for investigation of CF group antibiotic
287 usage and extra clinical factors such as lung function. However, the principle strength of this study is the
288 valuable insight into the relationships between microbiota composition and intestinal physiology and function
289 in CF. Future studies should encompass larger cohorts in a longitudinal fashion with the combination of both
290 lung and faecal microbiota data to elucidate such relationships better, including the impact of pulmonary
291 antibiotic usage on the gut microbiota, and the aptly termed gut-lung axis. Evaluation of associations between
292 the microbiota, physiology and the immune response would also improve our understanding of the
293 mechanisms contributing to GI health in CF. Given their possible beneficial effect on intestinal inflammation
294 [49], the impact of CFTR modulator therapy will provide further insights.

295 **5. Conclusion**

296 This cross-sectional pilot study has identified relationships between markers of clinical status, gastrointestinal
297 function and bacterial dysbiosis in the CF population. By partitioning the community into core and satellite taxa,
298 we were able to reveal the relative contributions of CF-associated lifestyle factors and elements of intestinal
299 function to these subcommunity compositions, and how specific taxa were affected by these clinical factors.
300 Further, as the first study to combine high-throughput gene amplicon sequencing with non-invasive MRI to
301 assess underlying gut pathologies, we demonstrate the potential for future collaborations between
302 gastroenterology and microbiology with larger cohort recruitment to investigate these relationships between
303 gut function and the microbiome further.

304

305

306 **Author Contributions**

307 CvdG, AS, GM, and RJM conceived the study. RJM, HG, LH, and MMR performed sample processing and
308 analysis. RJM, DR, and CvdG performed the data and statistical analysis. CN, GM, and AS were responsible
309 for sample collection, clinical care records and documentation. RJM, CN, GM and CvdG verified the underlying
310 data. RJM, DR, and CvdG were responsible for the creation of the original draft of the manuscript. RJM, CN,
311 GM, DR, AS, and CvdG contributed to the development of the final manuscript. CvdG is the guarantor of this
312 work. All authors read and approved the final manuscript.

313

314 **Funding**

315 A CF Trust Venture and Innovation Award (VIA 77) awarded to CvdG funded this work. Funding for the Gut
316 Imaging for Function and Transit in CF (GIFT-CF) study was received from the Cystic Fibrosis Trust (VIA 061),
317 Cystic Fibrosis Foundation (Clinical Pilot and Feasibility Award SMYTH18A0-I), and National Institute for
318 Health Research Biomedical Research Centre, Nottingham.

319

320 **Declaration of Competing Interest**

321 RJM, HG, LH, DM, and CvdG declare support from the CF Trust. CN and GM report grants and speaker
322 honorarium from Vertex, outside the submitted work. ARS reports grants from Vertex, as well as speaker
323 honoraria and expenses from Teva and Novartis and personal fees from Vertex, outside the submitted work.
324 In addition, ARS has a patent issued "Alkyl quinolones as biomarkers of *Pseudomonas aeruginosa* infection
325 and uses thereof".

326 Acknowledgements

327 We would like to thank Neele Dellschaft, Caroline Hoad, Luca Marciani, and Penny Gowland of the Sir Peter
328 Mansfield Imaging Centre, University of Nottingham, who acquired the original MRI data [18]. We would also
329 like to thank Nottingham Hospitals Charity, who funded faecal calprotectin assays and the transport of faecal
330 samples for downstream analysis.

331

332

333 References

- 334 [1] De Lisle RC, Borowitz D. The cystic fibrosis intestine. *Cold Spring Harb Perspect Med* 2013;3:a009753.
335 [2] Ooi CY, Durie PR. Cystic fibrosis from the gastroenterologist's perspective. *Nat Rev Gastroenterol*
336 *Hepatol* 2016;13:175–85.
337 [3] Tabori H, Arnold C, Jaudszus A, Mentzel HJ, Renz DM, Reinsch S, et al. Abdominal symptoms in cystic
338 fibrosis and their relation to genotype, history, clinical and laboratory findings. *PLoS One*
339 2017;12:e0174463.
340 [4] Hayee B, Watson KL, Campbell S, Simpson A, Farrell E, Hutchings P, et al. A high prevalence of
341 chronic gastrointestinal symptoms in adults with cystic fibrosis is detected using tools already validated
342 in other GI disorders. *United Eur Gastroenterol J* 2019;7:881–8.
343 [5] Smith S, Rowbotham N, Davies G, Gathercole K, Collins SJ, Elliott Z, et al. How can we relieve
344 gastrointestinal symptoms in people with cystic fibrosis? An international qualitative survey. *BMJ Open*
345 *Respir Res* 2020;7:e000614.
346 [6] Antosca KM, Chernikova DA, Price CE, Ruoff KL, Li K, Guill MF, et al. Altered Stool Microbiota of
347 Infants with Cystic Fibrosis Shows a Reduction in Genera Associated with Immune Programming from
348 Birth. *J Bacteriol* 2019;201:e00274-19.
349 [7] Loman BR, Shrestha CL, Thompson R, Groner JA, Mejias A, Ruoff KL, et al. Age and environmental
350 exposures influence the fecal bacteriome of young children with cystic fibrosis. *Pediatr Pulmonol*
351 2020;55:1661–70.
352 [8] Burke DG, Fouhy F, Harrison MJ, Rea MC, Cotter PD, Sullivan OO, et al. The altered gut microbiota in
353 adults with cystic fibrosis. *BMC Microbiol* 2017;17:58.
354 [9] Vernocchi P, Chierico F Del, Russo A, Majo F, Rossitto M, Valerio M, et al. Gut microbiota signatures
355 in cystic fibrosis: Loss of host CFTR function drives the microbiota enterophenotype. *PLoS One*
356 2018;13:e0208171.
357 [10] Kristensen M, Prevaes SMPJ, Kalkman G, Tramper-Stranders GA, Hasrat R, de Winter- de Groot KM,
358 et al. Development of the gut microbiota in early life: The impact of cystic fibrosis and antibiotic
359 treatment. *J Cyst Fibros* 2020.
360 [11] Donohoe DR, Garge N, Zhang X, Sun W, O'Connell TM, Bunger MK, et al. The Microbiome and
361 Butyrate Regulate Energy Metabolism and Autophagy in the Mammalian Colon. *Cell Metab*
362 2011;13:517–26.
363 [12] Chang P V, Hao L, Offermanns S, Medzhitov R. The microbial metabolite butyrate regulates intestinal
364 macrophage function via histone deacetylase inhibition. *Proc Natl Acad Sci U S A* 2014;111:2247–
365 2252.
366 [13] Arpaia N, Campbell C, Fan X, Dikiy S, Veeken J van der, DeRoos P, et al. Metabolites produced by
367 commensal bacteria promote peripheral regulatory T cell generation. *Nature* 2013;504:451–455.
368 [14] De Freitas MB, Moreira EAM, Tomio C, Moreno YMF, Daltoe FP, Barbosa E, et al. Altered intestinal
369 microbiota composition, antibiotic therapy and intestinal inflammation in children and adolescents with
370 cystic fibrosis. *PLoS One* 2018;13:e0198457.
371 [15] Flass T, Tong S, Frank DN, Wagner BD, Robertson CE, Kotter CV, et al. Intestinal lesions are
372 associated with altered intestinal microbiome and are more frequent in children and young adults with
373 cystic fibrosis and cirrhosis. *PLoS One* 2015;10:e0116967.
374 [16] Dayama G, Priya S, Niccum DE, Khoruts A, Blekhman R. Interactions between the gut microbiome and
375 host gene regulation in cystic fibrosis. *Genome Med* 2020;12:12.
376 [17] Malagelada C, Bendezú RA, Seguí S, Vitrià J, Merino X, Nieto A, et al. Motor dysfunction of the gut in
377 cystic fibrosis. *Neurogastroenterol Motil* 2020;00:e13883.
378 [18] Ng C, Dellschaft NS, Hoad CL, Marciani L, Ban L, Prayle AP, et al. Postprandial changes in
379 gastrointestinal function and transit in cystic fibrosis assessed by Magnetic Resonance Imaging. *J Cyst*
380 *Fibros* 2020.

- 381 [19] Gorzelak MA, Gill SK, Tasnim N, Ahmadi-Vand Z, Jay M, Gibson DL. Methods for improving human
382 gut microbiome data by reducing variability through sample processing and storage of stool. PLoS One
383 2015;10:e0134802.
- 384 [20] Rogers GB, Cuthbertson L, Hoffman LR, Wing PAC, Pope C, Hooftman DAP, et al. Reducing bias in
385 bacterial community analysis of lower respiratory infections. ISME J 2013;7:697–706.
- 386 [21] Callahan BJ, McMurdie PJ, Rosen MJ, Han AW, Johnson AJA, Holmes SP. DADA2: High resolution
387 sample inference from Illumina amplicon data. Nat Methods 2016;13:4–5.
- 388 [22] Øyvind Hammer, David A.T. Harper and PDR. PAST: Paleontological Statistics Software Package for
389 Education and Data Analysis. Palaeontol Electron 2001;4:9 p.
- 390 [23] ter Braak C, Smilauer P. CANOCO reference manual and user's guide: software for ordination. Ithaca:
391 Microcomputer Power; 2012.
- 392 [24] Cuthbertson L, Walker AW, Oliver AE, Rogers GB, Rivett DW, Hampton TH, et al. Lung function and
393 microbiota diversity in cystic fibrosis. Microbiome 2020;8:45.
- 394 [25] Zaneveld JR, McMinds R, Thurber RV. Stress and stability: Applying the Anna Karenina principle to
395 animal microbiomes. Nat Microbiol 2017;2:17121.
- 396 [26] Enaud R, Hooks KB, Barre A, Barnetche T, Hubert C, Massot M, et al. Intestinal Inflammation in
397 Children with Cystic Fibrosis Is Associated with Crohn's-Like Microbiota Disturbances. J Clin Med
398 2019;8:645.
- 399 [27] Madan JC, Koestle DC, Stanton BA, Davidson L, Moulton LA, Housman ML, et al. Serial analysis of
400 the gut and respiratory microbiome. MBio 2012;3:e00251-12.
- 401 [28] Coffey MJ, Nielsen S, Wemheuer B, Kaakoush NO, Garg M, Needham B, et al. Gut Microbiota in
402 Children With Cystic Fibrosis: A Taxonomic and Functional Dysbiosis. Sci Rep 2019;9:18593.
- 403 [29] Al-Momani H, Perry A, Stewart CJ, Jones R, Krishnan A, Robertson AG, et al. Microbiological profiles
404 of sputum and gastric juice aspirates in Cystic Fibrosis patients. Sci Rep 2016;6:26985.
- 405 [30] Anderson JL, Miles C, Tierney AC. Effect of probiotics on respiratory, gastrointestinal and nutritional
406 outcomes in patients with cystic fibrosis: A systematic review. J Cyst Fibros 2017;16:186–97.
- 407 [31] Kastl AJ, Terry NA, Wu GD, Albenberg LG. The Structure and Function of the Human Small Intestinal
408 Microbiota: Current Understanding and Future Directions. Cell Mol Gastroenterol Hepatol 2020;9:33–
409 45.
- 410 [32] Manor O, Levy R, Pope CE, Hayden HS, Brittnacher MJ, Carr R, et al. Metagenomic evidence for
411 taxonomic dysbiosis and functional imbalance in the gastrointestinal tracts of children with cystic
412 fibrosis. Sci Rep 2016;6:22493.
- 413 [33] Hoffman LR, Pope CE, Hayden HS, Heltshe S, Levy R, McNamara S, et al. *Escherichia coli* dysbiosis
414 correlates with gastrointestinal dysfunction in children with cystic fibrosis. Clin Infect Dis 2014;58:396–
415 9.
- 416 [34] Hayden HS, Eng A, Pope CE, Brittnacher MJ, Vo AT, Weiss EJ, et al. Fecal dysbiosis in infants with
417 cystic fibrosis is associated with early linear growth failure. Nat Med 2020;26:215–21.
- 418 [35] Duytschaever G, Huys G, Bekaert M, Boulanger L, Boeck K De, Vandamme P. Dysbiosis of
419 bifidobacteria and *Clostridium* cluster XIVA in the cystic fibrosis fecal microbiota. J Cyst Fibros
420 2013;12:206–15.
- 421 [36] Li KY, Wang JL, Wei JP, Gao SY, Zhang YY, Wang LT, et al. Fecal microbiota in pouchitis and
422 ulcerative colitis. World J Gastroenterol 2016;22:8929–39.
- 423 [37] Rainey FA, Hollen BJ, Small A. Genus I. *Clostridium* Prazmowski 1880, 23AL. 2nd ed. New York:
424 Springer; 2009.
- 425 [38] Wang Y, Leong LEX, Keating RL, Kanno T, Abell GCJ, Mobegi FM, et al. Opportunistic bacteria confer
426 the ability to ferment prebiotic starch in the adult cystic fibrosis gut. Gut Microbes 2019;10:367–81.
- 427 [39] Elborn JS. Cystic fibrosis. Lancet 2016;388:2519–31.
- 428 [40] Meeker SM, Mears KS, Sangwan N, Brittnacher MJ, Weiss EJ, Treuting PM, et al. CFTR dysregulation
429 drives active selection of the gut microbiome. PLoS Pathog 2020;16:e1008251.
- 430 [41] Roager HM, Hansen LBS, Bahl MI, Frandsen HL, Carvalho V, Gøbel RJ, et al. Colonic transit time is
431 related to bacterial metabolism and mucosal turnover in the gut. Nat Microbiol 2016;1:16093.
- 432 [42] Takeshita K, Mizuno S, Mikami Y, Sujino T, Saigusa K, Matsuoka K, et al. A single species of
433 *Clostridium* Subcluster XIVA decreased in ulcerative colitis patients. Inflamm Bowel Dis 2016;22:2802–
434 10.
- 435 [43] Vermeire S, Joossens M, Verbeke K, Wang J, Machiels K, Sabino J, et al. Donor Species Richness
436 Determines Faecal Microbiota Transplantation Success in Inflammatory Bowel Disease. J Crohn's
437 Colitis 2016;10:387–94.
- 438 [44] Norkina O, Burnett TG, De Lisle RC. Bacterial overgrowth in the cystic fibrosis transmembrane
439 conductance regulator null mouse small intestine. Infect Immun 2004;72:6040–9.
- 440 [45] De Lisle RC. Altered transit and bacterial overgrowth in the cystic fibrosis mouse small intestine. Am J
441 Physiol - Gastrointest Liver Physiol 2007;293:104–11.
- 442 [46] Collins S. Nutritional management of cystic fibrosis – an update for the 21st century. Paediatr Respir

- 443 Rev 2018;26:4–6.
444 [47] Matamouros S, Hayden HS, Hager KR, Brittnacher MJ, Lachance K, Weiss EJ, et al. Adaptation of
445 commensal proliferating *Escherichia coli* to the intestinal tract of young children with cystic fibrosis.
446 Proc Natl Acad Sci U S A 2018;115:1605–10.
447 [48] Nagy E, Urbán E, Nord CE. Antimicrobial susceptibility of *Bacteroides fragilis* group isolates in Europe:
448 20 years of experience. Clin Microbiol Infect 2011;17:371–9.
449 [49] Tetard C, Mittaine M, Bui S, Beaufils F, Maumus P, Fayon M, et al. Reduced Intestinal Inflammation
450 With Lumacaftor/Ivacaftor in Adolescents With Cystic Fibrosis. J Pediatr Gastroenterol Nutr
451 2020;71:778–81.