

1 Prioritizing COVID-19 vaccination efforts and dose allocation within Madagascar

2 Fidisoa Rasambainarivo <sup>1,2</sup>, Tanjona Ramiadantsoa <sup>3,4,5</sup>, Antso Raherinandrasana <sup>6,7</sup>, Santatra  
3 Randrianarisoa <sup>2</sup>, Benjamin L. Rice <sup>1,8</sup>, Michelle V. Evans <sup>5</sup>, Benjamin Roche <sup>5</sup>, Fidiniaina Mamy  
4 Randriatsarafara <sup>7,9</sup>, Amy Wesolowski <sup>10</sup> and C. Jessica Metcalf <sup>1,11</sup>.

5

6 1. Department of Ecology and Evolutionary Biology, Princeton University, Princeton, NJ,  
7 USA

8 2. Mahaliana Labs SARL, Antananarivo, Madagascar

9 3. Department of Life Science, University of Fianarantsoa, Madagascar

10 4. Department of Mathematics, University of Fianarantsoa, Madagascar

11 5. MIVEGEC, Université de Montpellier, CNRS, IRD, Montpellier, France

12 6. Surveillance Unit, Ministry of Health of Madagascar

13 7. Faculty of Medicine, University of Antananarivo

14 8. Madagascar Health and Environmental Research (MAHERY), Maroantsetra,  
15 Madagascar

16 9. Direction of preventive Medicine, Ministry of Health of Madagascar

17 10. Department of Epidemiology, Johns Hopkins Bloomberg School of Public Health,  
18 Baltimore, MD, USA

19 11. Princeton School of Public and International Affairs, Princeton University, NJ, USA

20 Abstract

21 Background: While mass COVID-19 vaccination programs are underway in high-income  
22 countries, limited availability of doses has resulted in few vaccines administered in low and  
23 middle income countries (LMICs). The COVID-19 Vaccines Global Access (COVAX) is a WHO-  
24 led initiative to promote vaccine access equity to LMICs and is providing many of the doses

25 available in these settings. However, initial doses are limited and countries, such as  
26 Madagascar, need to develop prioritization schemes to maximize the benefits of vaccination  
27 with very limited supplies. There is some consensus that dose deployment should initially target  
28 health care workers, and those who are more vulnerable including older individuals. However,  
29 questions of geographic deployment remain, in particular associated with limits around vaccine  
30 access and delivery capacity in underserved communities, for example in rural areas that may  
31 also include substantial proportions of the population.

32  
33 **Methods:** To address these questions, we developed a mathematical model of SARS-CoV-2  
34 transmission dynamics and simulated various vaccination allocation strategies for Madagascar.  
35 Simulated strategies were based on a number of possible geographical prioritization schemes,  
36 testing sensitivity to initial susceptibility in the population, and evaluating the potential of tests for  
37 previous infection.

38  
39 **Results:** Using cumulative deaths due to COVID-19 as the main outcome of interest, our results  
40 indicate that distributing the number of vaccine doses according to the number of elderly living  
41 in the region or according to the population size results in a greater reduction of mortality  
42 compared to distributing doses based on the reported number of cases and deaths. The  
43 benefits of vaccination strategies are diminished if the burden (and thus accumulated immunity)  
44 has been greatest in the most populous regions, but the overall strategy ranking remains  
45 comparable. If rapid tests for prior immunity may be swiftly and effectively delivered, there is  
46 potential for considerable gain in mortality averted, but considering delivery limitations  
47 modulates this.

48  
49 **Conclusion:** At a subnational scale, our results support the strategy adopted by the COVAX  
50 initiative at a global scale.

## 51 Introduction

52 The COVID-19 pandemic has resulted in a global health crisis resulting in an estimated 198  
53 million cases and 4.2 million deaths (as of 31 July 2021) globally [1]. Until recently, non-  
54 pharmaceutical interventions, including social distancing, mask wearing, and travel restrictions  
55 were the primary mitigation measures. However, the development, approval, and distribution of  
56 several highly effective COVID-19 vaccines has resulted in a new era of public health response.  
57 The overall impact of mass vaccination on the global pandemic will depend on access to  
58 vaccines and ability to rapidly vaccinate populations [2]. There has been global competition to  
59 procure COVID-19 vaccines, and many low and middle income countries (LMICs) have been  
60 less successful than richer countries in securing vaccines [3] despite the COVAX initiative.  
61 COVAX is a World Health Organization (WHO) led initiative to promote vaccine access equity to  
62 LMICs and is set up to provide enough doses to immunize 20% of the population through  
63 distribution of multiple smaller batches [4]. Such efforts have provided essential baseline doses  
64 to LMICs, but even with vaccines in hand, countries face a number of logistical challenges.  
65 Some COVID-19 vaccines have extreme cold chain requirements and relatively short vaccine  
66 shelf-life that adds difficulties in avoiding vaccine wastage [4]. Likewise, achieving equity in  
67 vaccine coverage is always affected by heterogeneity in access to care [5] and may be further  
68 complicated by vaccine hesitancy [6]. However, many LMICs have more recent experience with  
69 mass vaccination campaigns (e.g., polio, measles) [7], which may provide an advantage in  
70 implementation relative to wealthier settings where mass vaccination campaigns have been less  
71 frequent in recent history.

72

73 Policy makers in LMICs face the central question of how COVID-19 vaccine doses should be  
74 allocated among populations in the face of these constraints and considerations of burden. So  
75 far, mathematical models developed to address the question of vaccine dose allocation have

76 predominantly focused on the tradeoffs between prioritizing younger high contact individuals  
77 (which would reduce transmission) vs older high risk individuals (which would reduce mortality  
78 on infection). Previous work suggests that priority should be given to healthcare workers (HCW)  
79 and then to older adults, in line with rankings and guidelines provided by the WHO [8–10].  
80 However, it should also be considered that focusing on distribution across age may neglect  
81 other drivers of inequity, such as geography and ethnicity [11]. For LMICs, a further important  
82 issue is local availability of personnel who can deliver doses, as numbers of HCWs may be  
83 limited.

84  
85 Here, we explore the question of how regional vaccine dose distribution might be designed to  
86 minimize the burden of COVID-19 in Madagascar in the light of these features. We leverage  
87 data collected as part of a dashboard ([www.covid19mg.org](http://www.covid19mg.org)) that collates official reported cases  
88 of COVID-19 and census information. To date, Madagascar has officially reported a total of  $x$   
89 cases and  $y$  deaths since March 20th 2020. Most cases ( $x$ ) and deaths ( $y$ ) are reported from the  
90 capital region of Analamanga, also the most populated region in the country with approximately  
91 3 620 000 people representing 14% of the population. However, there is considerable  
92 uncertainty as to the burden of the disease on the Malagasy population to date, especially in  
93 rural areas where reporting rates are likely to be low and limited access to testing [12]. As prior  
94 infection by SARS-CoV-2 does generate immunity likely to be protective [13] against disease if  
95 not reinfection [14, 15], subnational variation in the trajectory of the pandemic to this point could  
96 influence the dose deployment strategy among regions that minimizes burden. However,  
97 inevitable uncertainties call for a focus on vaccine deployment efforts that are robust in the face  
98 of this underlying subnational variation rather than hinging on its characteristics.

99  
100 On April 3rd 2021, Madagascar initiated the necessary steps to re-join COVAX and distributed  
101 the first doses of vaccines to healthcare workers and vulnerable populations on May 10th. As of

102 July 20th 2021, 197 000 doses of an initial batch comprising 250 000 ChAdOx1-nCOV  
103 (Covishield™) vaccines were administered representing 0.73% of the national population  
104 (ourworldindata.org). These doses were distributed between the 22 different regions based on  
105 population size of each region. To inform the next steps in vaccine dose allocation strategies in  
106 Madagascar, we synthesize data on the regional distribution of elderly population and the  
107 number of reported cases and deaths in the country. Building from this background, we develop  
108 a mathematical model to investigate the optimal vaccine deployment strategy in the context of  
109 realistic constraints for mass vaccination campaigns based on health care worker availability,  
110 and known features of the burden of infection over age. We contrast four possible strategies for  
111 distribution based on a) population size, b) number of individuals over 60 years old, c) the  
112 number of reported cases, and d) the number of COVID-19 deaths by region. These strategies  
113 weigh different factors, i.e. those most at risk versus areas with the highest burden of the  
114 disease, and allow for a comparison of implementable strategies by weighing the overall  
115 number of deaths averted through each approach. Since deployment of vaccines to areas that  
116 had experienced large-scale outbreaks in the first waves of the infection might be less beneficial  
117 than deployment to less affected regions as a result of existing immunity in the population, we  
118 also evaluate sensitivity of our predictions to underlying susceptibility in the population, and  
119 explore the potential of rapid tests for seropositivity to guide vaccine distribution and avert  
120 mortality.

121

## 122 Methods

123 Data sources: demography, HCWs, and SARS-CoV-2 case distribution

124 Regional population size and age distribution were obtained from the 2018 census (Madagascar  
125 Institute of Statistics, INSTAT). The number of healthcare workers in each region was obtained

126 from UNICEF database for Madagascar. SARS-CoV-2 cases and COVID-19 deaths were  
127 obtained from a dashboard ([www.covid19mg.org](http://www.covid19mg.org)) which compiles data communicated by the  
128 Ministry of Health on a daily basis. These data comprise PCR-confirmed cases, deaths per  
129 region as well as the number of tests performed nationally. Using these data, we ranked each  
130 region based on the size and the age distribution of the population and the number of  
131 healthcare workers in the region on the one hand and the situation with regards to the COVID-  
132 19 epidemic (officially reported cases and deaths) on the other hand.

### 133 SARS-CoV-2 transmission model of Madagascar

134 We constructed an age-structured, stochastic SEAIR (susceptible, exposed, asymptomatic  
135 infection, symptomatic infection, and removed) transmission model by expanding previous work  
136 [16, 17] (see Supplementary figure S1). With this model, we simulated the trajectory of SARS-  
137 CoV-2 cases in each of the 22 regions of Madagascar under different assumptions about  
138 vaccination deployment among the regions (detailed below). For each region, the demography  
139 (age-structure and population size) was defined based on INSTAT statistics described above,  
140 while contact matrices were based on the social mixing patterns in the Mozambican population  
141 [18], since there is no contact matrix data available for Madagascar. We set  $R_0$  (the number of  
142 new infections per infectious individual in a completely susceptible population) to 2.5 as in [16]  
143 and simulated our model for a year. To quantify the burden of infection, we used the age-  
144 specific mortality risk (infection fatality rate by age) [19, 20], and each vaccination scenario was  
145 compared to a 'no vaccination' scenario. We explored a range of different starting proportions of  
146 the population susceptible, to reflect potentially varied histories of infection in each region. We  
147 initiated the outbreak by seeding 10 individuals in each region.

## 148 Vaccination

149 To compare the impact of varying vaccine distribution among the 22 regions of Madagascar on  
150 total mortality, we assumed that the country received a single batch of COVID-19 vaccines that  
151 was sufficient to vaccinate 20% of the population. In our baseline scenario, we assume that  
152 70% of those eligible for vaccination, regardless of age, will accept to be vaccinated with their  
153 full scheduled doses (Transparency International, unpublished). We initially do not assume that  
154 any information regarding previous infection status would be available, i.e. individuals who were  
155 previously infected may be vaccinated. The vaccine is assumed to work uniformly across age  
156 groups and be transmission and infection blocking with an efficacy of 76%, chosen to  
157 approximate the clinical vaccine efficacy against symptomatic infection seen for the ChAdOx1  
158 nCoV-19 (AZD1222) [21, 22]. Finally, we assume that 50% of healthcare workers in each region  
159 would be mandated to vaccinate 20 people a day, based on experience of vaccination programs  
160 in Antananarivo. Vaccination follows an oldest-first strategy where vaccines are administered to  
161 individuals aged 60 years or older first. After all accepting individuals in the eligible group are  
162 vaccinated, individuals from the next (younger) age group are vaccinated and so on until all  
163 available doses are administered.

164

165 We then considered five allocation strategies of available doses:

- 166 1. Doses are distributed to regions uniformly (each region receives 4.5% of available  
167 vaccines)
- 168 2. Doses are distributed to regions based on population size (pro-rata),
- 169 3. Doses are allocated based on the distribution of people aged over 60 years between the  
170 regions (age),
- 171 4. Doses are distributed to regions based on the number of cases reported (cases),
- 172 5. Doses are distributed to regions based on the number of deaths reported (deaths)

173 The number of cases and deaths per region was obtained from the Madagascar COVID-19  
174 dashboard ([www.covid19mg.org](http://www.covid19mg.org)) which collates the reported confirmed cases and deaths per  
175 region daily. For each allocation strategy, we then estimated the number of deaths and  
176 compared this value to a scenario without vaccination to calculate the number of averted  
177 deaths.

178  
179 For each allocation strategy, we also varied the number of total doses available nationally (from  
180 0 to 26 million covering 0-100% of the population), the vaccine acceptance rate (from 0-100%),  
181 the speed of rollout which is equivalent to the number of vaccinators per region (10-100% of  
182 healthcare workers in the region) and when the vaccination campaign began (0-200 days).

183  
184 To investigate the effect of any potential existing immunity from prior infections, we considered  
185 two sets of initial conditions. In the first instance we assumed that 100% of the population was  
186 susceptible, all locations included at least 10 infected individuals, and the vaccination campaign  
187 would begin soon after the beginning of the simulation (within 10 days). In the second instance,  
188 we assumed that there is a baseline level of population-level immunity based on a uniform value  
189 for the entire country (0 - 40%) or proportional to reported cases (0-20%, see Supplementary  
190 Information).

191  
192 To assess the benefit of targeting seronegative individuals through rapid testing, we included  
193 age-stratified seroprevalence and simulated different approaches to vaccine distribution.

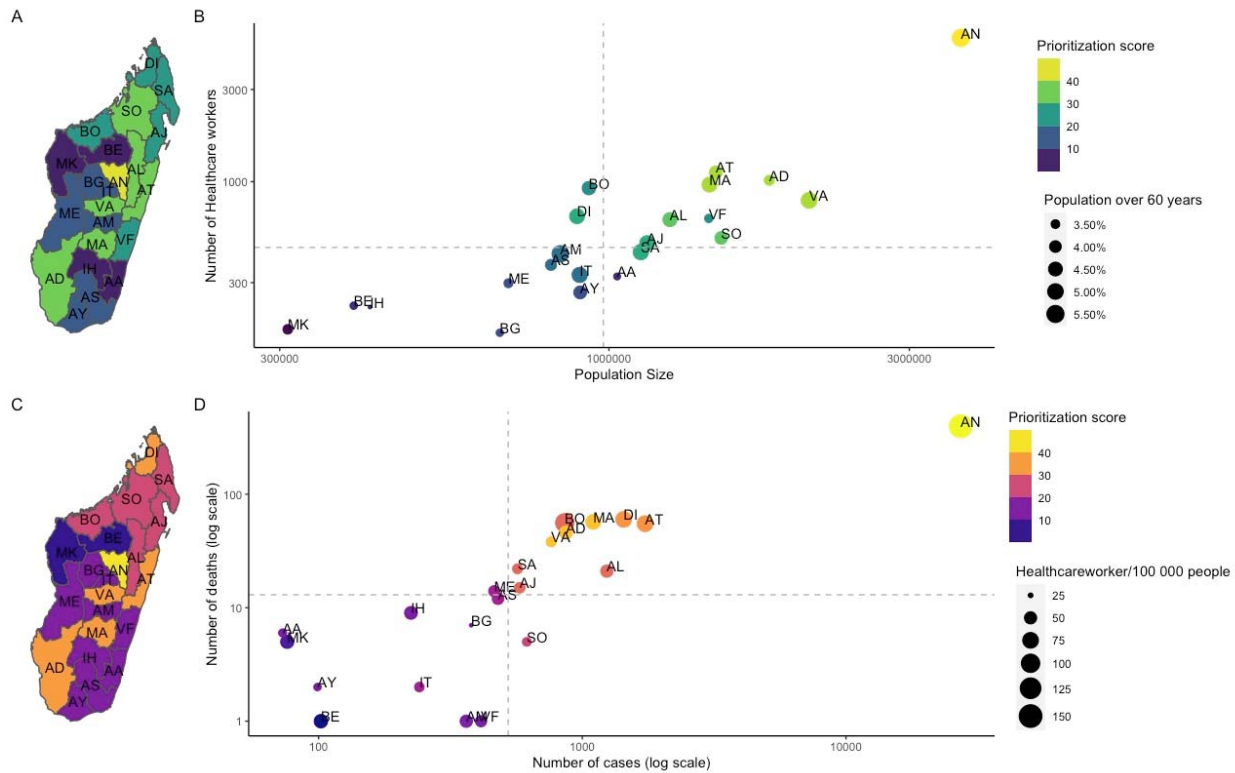
194

## 195 Results

196 Considering either population size, number of health-care workers (Figure 1A,B), number of  
197 reported cases, or numbers of confirmed deaths (Figure 1C,D) provides broadly similar overall



198 priority rankings of regions (colours), with the region of Analamanga (AN, which contains the  
 199 capital city, Antananarivo), consistently ranking highest, and the smaller, less densely populated  
 200 regions (e.g., MK: Melaky) ranking lower.



201  
 202 **Figure 1: Demography, distribution of health care workers, SARS-CoV-2 cases, and**  
 203 **deaths across Madagascar.** A) The ranking for vaccine distribution based on the population  
 204 size and number of healthcare workers per region. B) Using the population size and number of  
 205 healthcare workers, each of the 22 regions was prioritized with regions with a large population  
 206 size and high number of healthcare workers ordered first (yellow) and those with the smallest  
 207 population size and number of healthcare workers ranked last (purple). The size of the point  
 208 corresponds to the proportion of people over 60 years old. C) In contrast, the rankings for  
 209 regions based on D) the number of confirmed SARS-CoV-2 cases (March 20, 2020 – July 30,  
 210 2021) based on the number of reported cases and confirmed COVID-19 deaths. Regions would  
 211 receive doses first if they had the largest reported outbreaks (yellow) and last (purple) if they

212 had few reported cases and deaths. The size of points indicates the number of healthcare  
213 workers per capita.

214

215

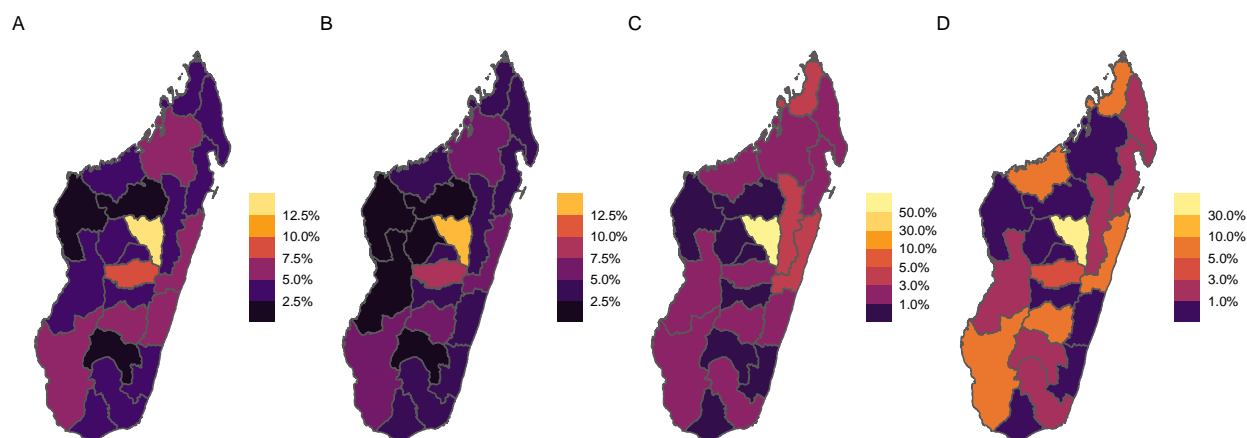
216

217

218 To probe this simple ranking by additionally evaluating the underlying dynamics of infection and  
219 vaccine distribution, we simulated five different vaccine distribution scenarios among the 22  
220 regions of Madagascar assuming availability of a single batch of vaccines sufficient to vaccinate  
221 20% of the population, and distributing doses uniformly (uniform), based on population size  
222 (pro-rata), the distribution of older individuals, defined as individuals 60+ years of age (age),  
223 reported cases (cases), and deaths (deaths). As expected based on Figure 1, there was a  
224 strong correlation between the strategies, and in all scenarios, Analamanga (the region  
225 containing the capital city) receives the largest number of vaccines (Figure 2) since it is the  
226 highest in all categories considered. We note that this initial prioritization assumes equal starting  
227 population immunity, further evaluated below.

228

229

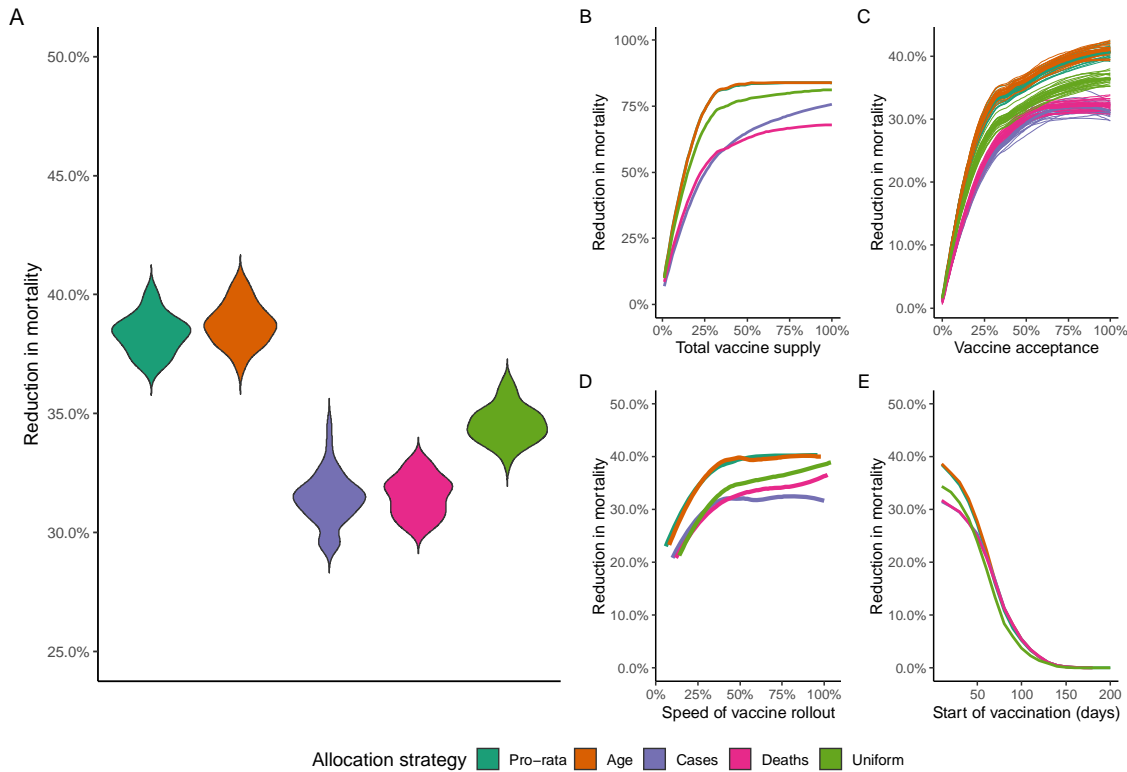


230

231 **Figure 2: The proportion of total doses distributed by region.** Assuming that the total  
232 vaccine supply is 20% of the entire population, we explored various distribution strategies. The  
233 proportion of doses per region is shown based on each prioritization scheme: (A) doses are  
234 distributed to regions based on population size (pro-rata), (B) doses are allocated based on the  
235 distribution of people aged over 60 years between the regions (age), (C) doses are distributed  
236 to regions based on the number of cases reported (cases), (D) doses are distributed to regions  
237 based on the number of deaths reported (deaths).

238

239

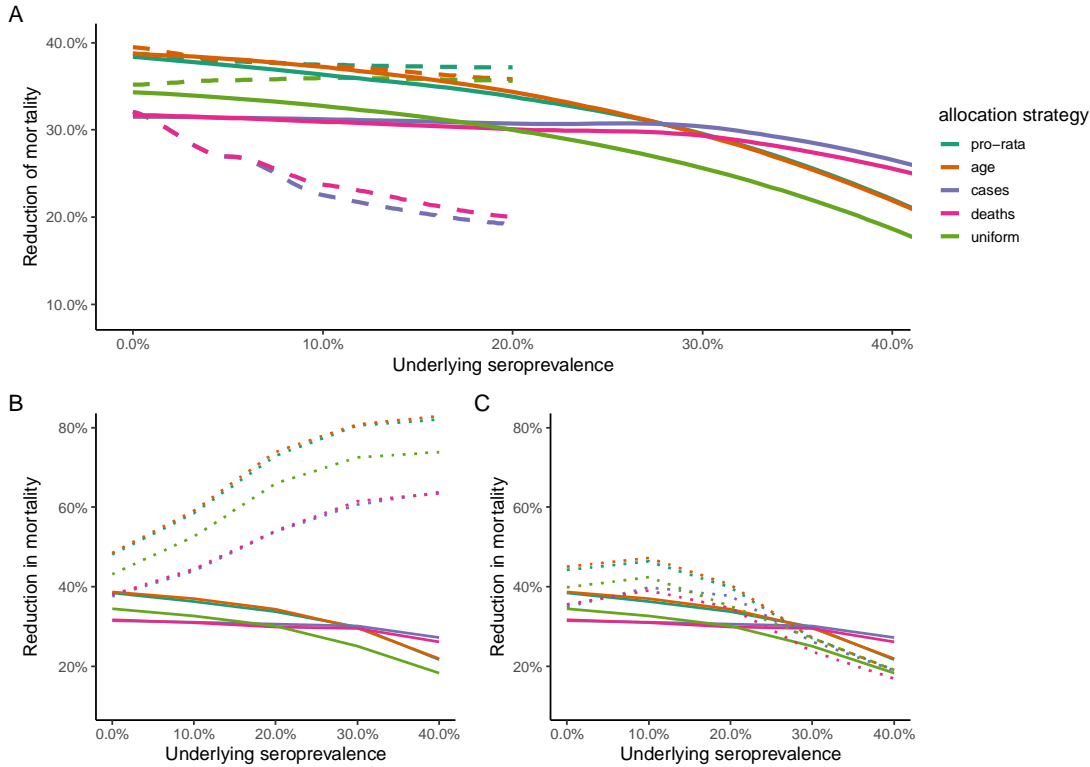


240

241 **Figure 3 - The estimated reduction in mortality for each vaccine allocation strategy.** The  
242 reduction in mortality by allocation strategy for a A) stochastic simulations assuming vaccine  
243 acceptance of 70%, rollout speed where 50% of health care workers were mandated to  
244 vaccinate 20 people a day, start day of 10 days following initial seeding event, and the number  
245 of total doses equals 20% of the population; B) by varying the total vaccine supply (other  
246 assumptions assumed to be the base scenario, see Materials and Methods); C) using a range  
247 of vaccine acceptance rates; D) various roll out speeds; and E) the start date of vaccination.  
248 The median and 50 stochastic simulations are shown per sensitivity analysis

249  
250  
251  
252  
253  
254  
255  
256  
257  
258  
259  
260  
261  
262  
263  
264  
265  
266  
267  
268

Overall, under the baseline scenario modeled (Figure 3A, assuming enough doses to immunize 20% of the population using a 76% efficacious vaccine with an acceptance rate of 70%, and assume that the population is fully susceptible at the start), any vaccination allocation strategy reduces the estimated number of deaths by 30-40% (Figure 3), and allocating available vaccines between regions based on the population size (pro rata) or the distribution of elderly generally outperform the other strategies (up to 10% more, Figure 3A). This is consistent across a spectrum of vaccine supply, vaccine acceptance, and speed of vaccine rollout (Figure 3B-D). The pro rata distribution of vaccines between regions or allocating doses according to the regional distribution of older people outperform distribution according to numbers of cases (or deaths) since all else equal, weighting by numbers of older individuals (which correlates with number of individuals) targets doses towards the most vulnerable [8]. As this quantity correlates with the number of Health Care Workers across regions (Figure 1B), formally modeling dose delivery does not reverse this relationship. However, if the vaccination campaign starts relatively late during the outbreak, all strategies perform equally to reduce mortality compared to a scenario without vaccination (Figure 3E) as the gains are relatively slight at this stage.



269

270 **Figure 4: The impact of baseline population-level seropositivity on the reduction in**

271 **mortality.** A) The reduction in mortality by allocation strategy if population seropositivity varies

272 between 0-40%. Two scenarios were considered: if seropositivity was distributed uniformly

273 (solid) and by the reported number of cases (dashed lines). To avoid more than 100%

274 seropositivity in regions with the highest number of reported cases, the case distribution

275 maximum population-level seropositivity explored was 20% (see Supplementary Information). B)

276 We further explored strategies where only susceptible individuals arrived at vaccination sites

277 (dotted line) versus those with no prior information about immune status (solid line) for a range

278 of seropositivity values (distributed uniformly). Vaccinating only susceptible individuals has the  
279 greatest reduction in mortality. C) We also investigated if testing at a vaccination site was done  
280 prior to vaccination with only seronegative individuals vaccinated (dotted line) or no prior  
281 information about immune status (solid line). These two scenarios performed similarly.

282

283

284

285 As the impact of previous waves of SARS-CoV-2 ([www.covid19mg.org](http://www.covid19mg.org)) on population immunity  
286 is not completely characterized [23], we evaluate two extreme scenarios: even levels of existing  
287 immunity across the country (Figure 4A, solid lines, assuming for simplicity that seropositivity  
288 and immunity are equivalent), and levels of immunity defined by reported numbers of cases  
289 (Figure 4A dashed lines). As population immunity increases (Figure 4A, x axis) the proportion of  
290 deaths averted relative to a scenario of no vaccination declines since fewer vaccines are  
291 delivered to individuals who are susceptible; however, the pro-rata and population based  
292 allocation still out-perform the other strategies. Allocation by cases and deaths performs much  
293 worse if it is assumed that immunity is distributed according to population or deaths, since  
294 doses are then targeted predominantly to the regions with lower proportions of susceptible  
295 individuals due to existing immunity (Figure 4A, pink and purple dashed lines fall fastest).

296

297 Rapid testing for sero-status (indicative of immunity) is a potential strategy to direct the  
298 deployment of doses towards those who more urgently require vaccination, as they lack prior  
299 natural immunity. We explore this by evaluating the percentage of deaths averted if only  
300 susceptible individuals are vaccinated (Figure 4B). By contrast with a scenario where vaccine  
301 doses are distributed uniformly (Figure 4B, dashed lines), when only susceptible individuals are  
302 vaccinated, the percent of deaths averted relative to the no-vaccination case increases with the  
303 proportion of the population initially immune (Figure 4B, dotted lines, gains of up to 40%), since

304 vaccines are targeted to those who need them. However, this scenario requires all individuals to  
305 know their immune status prior to going to the health centres for vaccination (and the serological  
306 tests to be perfect), which is likely to be unrealistic. If, instead, we assume that testing occurs at  
307 health centres, thus consuming some proportion of available health care worker time, and  
308 slowing down the overall speed of vaccination (although still assuming the tests are perfect),  
309 this strategy outperforms distribution regardless of serostatus; however, initial gains in terms of  
310 deaths averted drop off as the proportion of the population immune increases (Figure 4C, dotted  
311 lines start falling at around 25% of the population immune). The gains eventually even fall below  
312 the percent of deaths averted under the uniform distribution of doses once the proportion  
313 seropositive is greater than 30%, since so many individuals will be turned away from health  
314 centres.

## 315 Discussion

316 High levels of SARS-CoV-2 transmission continues to cause a global public health crisis. Mass  
317 vaccination of populations is the most effective strategy to prevent unnecessary morbidity and  
318 mortality. However, limited global vaccine supplies compel countries to prioritize among  
319 populations, and to do so in the context of an array of logistical constraints (expiration dates,  
320 healthcare worker availability, cold chains, etc.). Here, we use a stochastic age-structured  
321 model to identify dose allocation strategies that have the potential to minimize COVID-19 related  
322 deaths in Madagascar given vaccines provided by the COVAX initiative, and accounting for  
323 health care worker distribution across the country.

324  
325 At a subnational scale, our results support a regional distribution strategy based on  
326 demographic parameters (population size) to allocate available doses of SARS-CoV 2 vaccines  
327 in order to achieve the highest reduction in mortality. A distribution policy based on the  
328 population size of each region is intuitively appealing as it is equitable and straightforward to



329 implement. Indeed, pro-rata distribution of critical medicines has been used during a number of  
330 previous health crises. For example, during the 2009 H1N1 pandemic, the US Health and  
331 Human Services Pandemic Influenza Plan recommended that the different states of the USA  
332 receive pandemic vaccines in proportion to the size of its population. Additionally, researchers  
333 found that a simpler pro-rata allocation of antiviral drugs is as effective as optimal strategies  
334 targeting specific high risk groups in each region, and easier to implement [24, 25].

335  
336 Given that Madagascar has now experienced multiple waves of infection ([www.covid19mg.org](http://www.covid19mg.org))  
337 and that estimates of seroprevalence from blood donors in Madagascar show elevated  
338 population immunity [23], we also investigated strategies to take previous infection and thus  
339 immunity into account. Unsurprisingly, vaccinating only seronegative individuals allows for  
340 doses to be reallocated and expand protection to a larger population [8, 26, 27]. However, we  
341 note that assessing seropositivity via rapid testing at health facilities could slow the speed of  
342 vaccine delivery, which, in situations of high seropositivity, could reduce benefits in terms of  
343 mortality reductions. The benefit of additional testing to identify seronegative individuals must be  
344 weighed against the logistical challenges of testing, test accuracy [28], and ethical issues for the  
345 allocation of doses based on serostatus.

346  
347 While allocating doses based on population size reduced mortality more effectively than  
348 allocation based on cases (or deaths), large heterogeneity in testing capacity between regions,  
349 and reporting issues have likely resulted in underestimates of the true burden of the pandemic,  
350 and, importantly, in a possibly spatially biased way. Although our analysis suggests that  
351 allocation based on size is robust to a number of assumptions about underlying population  
352 immunity, additional investigation, including analysing mortality records available in the capital  
353 city of Madagascar [29] and other regions, could improve estimates of transmission and identify  
354 communities where the pandemic has been particularly severe. Our analysis assumes similar

355 starting dates for the outbreak in each of the 22 regions and neglects potential subnational  
356 heterogeneity in connectivity and contact within them [30]. The latter assumption leads to  
357 unrealistically rapid growth in case numbers within each region, such that estimates of  
358 reductions in mortality, although comparable, may be overly pessimistic. We also did not take  
359 into account time-varying estimates of transmission ( $R_t$ ) resulting from the introduction of non-  
360 pharmaceutical interventions in Madagascar, given uncertainty around the magnitude of these  
361 effects emerging from data sparseness. Additional analyses that integrate data streams to  
362 better bound temporal and spatial variation in transmission could further elucidate how different  
363 allocation strategies would perform. Further, we only explored a single dose vaccination  
364 strategy, and did not evaluate the impact of various vaccines being distributed simultaneously,  
365 since only ChAdOx1-nCOV (Covishield™) is currently available in Madagascar. Finally, we  
366 assumed that seropositivity and immunity were equivalent, but decision making around the  
367 value of rapid tests for vaccine allocation will be shaped by their sensitivity and specificity [28],  
368 which may be population specific [31]) and requires careful evaluation in Madagascar

369

370 To conclude, it is clear that the speed of vaccine deployment will shape the burden of SARS-  
371 CoV-2. However, logistical limitations associated with healthcare worker numbers lead to  
372 inevitable limits associated with speed, complicating allocation across regions. Our analysis  
373 probes approaches of dose allocation across regions that most reduce mortality assuming  
374 vaccination occurs as fast as possible given these constraints, finding that allocation by  
375 population yields consistently high benefits. However, Madagascar, and many other countries  
376 worldwide fundamentally require access to more vaccine doses. Vaccine equity is the largest  
377 global issue of the present moment.

378

379 **Declarations:**

380 **Ethics approval and consent to participate:** Not applicable

381 **Consent for publication:** Not applicable

382 **Availability of data and materials:** The datasets generated and/or analysed during the current  
383 study are available in the author's github repository, [www.github.com/fidyra/vaccination](https://www.github.com/fidyra/vaccination)

384 **Competing interests:** The authors declare that they have no competing interests

385 **Authors Contributions:** FR, TR, BLR, CJEM, AW conceived and designed the paper , FR and  
386 TR wrote and performed the analyses. FR, BLR, CJEM, AW, MVE, BR, AHR, SR, and FMR  
387 wrote the manuscript.

388 **Funding:** FR is supported by Princeton High Meadows Environmental Institute; CJEM is  
389 supported by the Center for Health and Wellbeing, Princeton University.

390 **Acknowledgments:** Authors would like to thank INSTAT for providing 2018 census data for  
391 Madagascar, the Ministry of Health for providing data on SARS-CoV2 cases and COVID-19  
392 deaths in Madagascar. Authors would like to thank Malavika Rajeev for support in building the  
393 COVID-19 Madagascar dashboard ([www.covid19mg.org](https://www.covid19mg.org)).

394

395

396

397

398

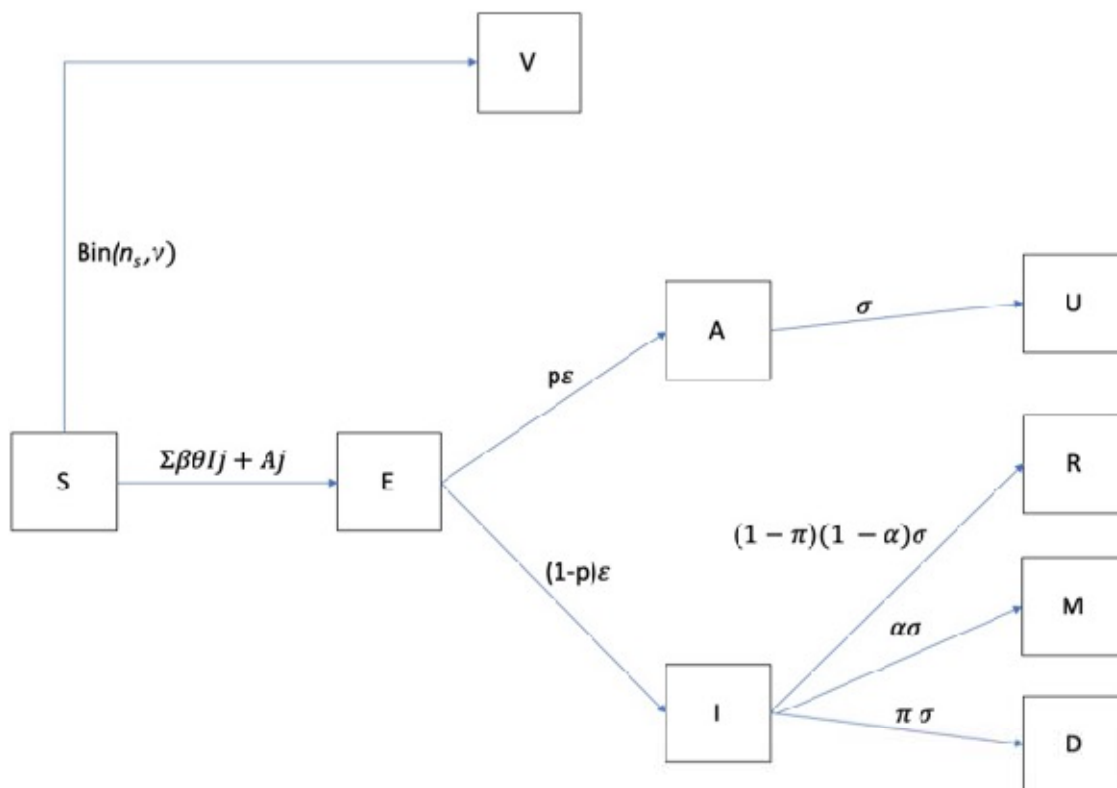
399

400

401

402

403



404

405 **Figure S1: Modeling framework.** The core of the model is similar to that of Roche et al. 2020.

406 The same model has been applied to understanding the covid dynamics and the effectiveness  
 407 of NPI at a national level in Madagascar (Evans et al. 2020). The stochastic simulation includes  
 408 eight states: Susceptible (S), Exposed (E), Infected (symptomatic, I), Infected (Asymptomatic,  
 409 A), and recovered from asymptomatic (U), recovered from symptomatic (R) infected

410 symptomatic individuals who become severely ill (M) and infected symptomatic individuals who

411 die (D) [17]. The population is divided into seven age classes (0-9;10-19;20-29;30-39;40-49;50-

412 59; 60+) . Susceptible individuals in an age class  $i$  ( $S_i$ ) can get the infection according to the

413 basal transmission rate ( $\beta$ ), the number of infectious (symptomatic and asymptomatic)  
414 individuals in each age class, and the contact rate among age classes. Once infected, an  
415 individual becomes infectious after an incubation period of 3 days, i.e. at a rate  $\varepsilon = 1/3$  days.  
416 Infectious individuals can be symptomatic (I) with a probability of  $p$  (assumed to be 40%) or  
417 asymptomatic (A) otherwise. Infectious individuals (I and A) can recover at a rate  $\sigma = 1/5$  days.  
418 Infectious symptomatic have a probability  $\alpha$  to become severely ill and a probability ( $\pi_i$ )  
419 dependent on their age class to die from the disease (D).

420

421 We included vaccination into the model. The daily number of people vaccinated ( $n$ ) depends on  
422 the number of healthcare workers and the total number of individual vaccinated is limited by the  
423 acceptance ( $\eta_i$ ). Individuals in the compartment S, E, A, U, and R can be vaccinated. However,  
424 vaccinating non-susceptible individuals would lead to vaccine wastage. Thus, we only track the  
425 number of susceptibles  $n_S$  that are vaccinated. Without testing,  $n_S$  is drawn from a binomial  
426 distribution  $\text{Binomial}(n, S/(S + E + A + U + R))$ . We consider two scenarios to test for  
427 seroprevalence and thus avoid vaccine wastage (see main text). Additionally, vaccination can  
428 prioritize older individuals or distribute the doses randomly in each age class according to a  
429 multinomial distribution where the vector of probabilities are given by the frequency of the  
430 individuals in each age-class. Vaccinated individuals gain protection after a lag of 6-days  
431 according to the vaccine efficacy ( $\nu$ ) which we assumed to be at 76% to approximate the clinical  
432 vaccine efficacy against symptomatic infection seen for the ChAdOx1 nCoV-19 (AZD1222). The  
433 actual number of people gaining protection is  $\text{Binomial}(n_S, \nu)$  .

434

## 435 **References**

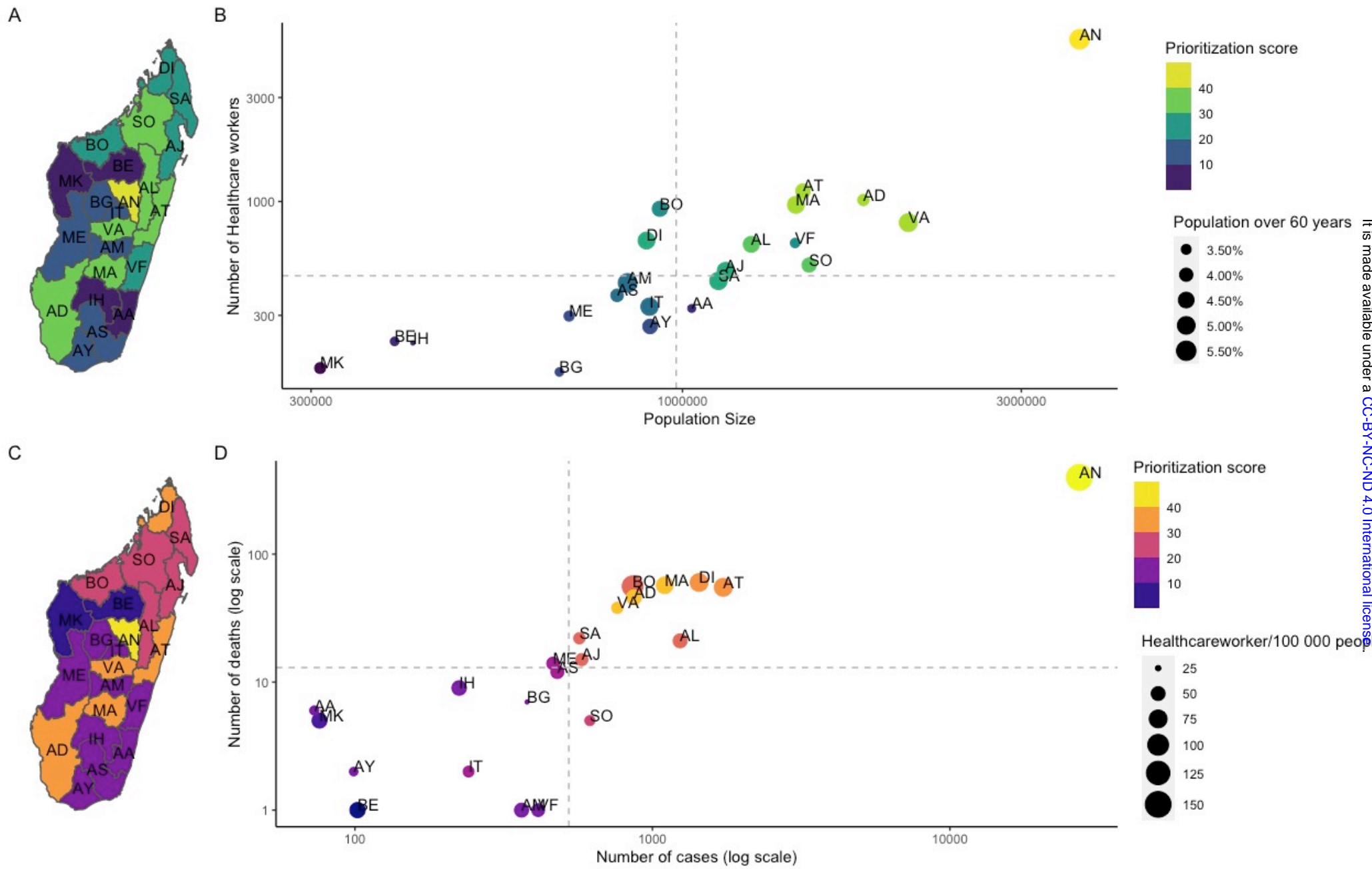
- 436 1. Ritchie H, Ortiz-Ospina E, Beltekian D, Mathieu E, Hasell J, Macdonald B, et al. Coronavirus  
437 Pandemic (COVID-19). Our World in Data. 2020. <https://ourworldindata.org/coronavirus>.  
438 Accessed 31 Jul 2021.
- 439 2. Acharya KP, Ghimire TR, Subramanya SH. Access to and equitable distribution of COVID-19  
440 vaccine in low-income countries. *Npj Vaccines*. 2021;6:54.
- 441 3. Kupferschmidt K. Unprotected African health workers die as rich countries buy up COVID-19  
442 vaccines. *Science*. 2021.
- 443 4. Wouters OJ, Shadlen KC, Salcher-Konrad M, Pollard AJ, Larson HJ, Teerawattananon Y, et  
444 al. Challenges in ensuring global access to COVID-19 vaccines: production, affordability,  
445 allocation, and deployment. *Lancet*. 2021;397 N Engl J Med 383 2020:1023–34.
- 446 5. Metcalf CJE, Tatem A, Bjornstad ON, Lessler J, O'Reilly K, Takahashi S, et al. Transport  
447 networks and inequities in vaccination: remoteness shapes measles vaccine coverage and  
448 prospects for elimination across Africa. *Epidemiol Infect*. 2015;143:1457–66.
- 449 6. Nachega JB, Sam-Agudu NA, Masekela R, Zalm MM van der, Nsanzimana S, Condo J, et al.  
450 Addressing challenges to rolling out COVID-19 vaccines in African countries. *Lancet Global*  
451 *Heal*. 2021.
- 452 7. Graham M, Winter AK, Ferrari M, Grenfell B, Moss WJ, Azman AS, et al. Measles and the  
453 canonical path to elimination. *Science*. 2019;364:584–7.
- 454 8. Bubar KM, Reinholt K, Kissler SM, Lipsitch M, Cobey S, Grad YH, et al. Model-informed  
455 COVID-19 vaccine prioritization strategies by age and serostatus. *Science*. 2021;371:916–21.
- 456 9. Castro MC, Singer B. Prioritizing COVID-19 vaccination by age. *Proc National Acad Sci*.  
457 2021;118:e2103700118.
- 458 10. Goldstein JR, Cassidy T, Wachter KW. Vaccinating the oldest against COVID-19 saves both  
459 the most lives and most years of life. *Proc National Acad Sci*. 2021;118:e2026322118.

- 460 11. Wrigley-Field E, Kiang MV, Riley AR, Barbieri M, Chen Y-H, Duchowny KA, et al.  
461 Geographically-targeted COVID-19 vaccination is more equitable than age-based thresholds  
462 alone. *Medrxiv*. 2021;:2021.03.25.21254272.
- 463 12. Rakotonanahary RJL, Andriambolamanana H, Razafinjato B, Raza-Fanomezanjanahary  
464 EM, Ramanandraitsiory V, Ralaivavikoa F, et al. Integrating Health Systems and Science to  
465 Respond to COVID-19 in a Model District of Rural Madagascar. *Frontiers Public Heal*.  
466 2021;9:654299.
- 467 13. Turner JS, Kim W, Kalaidina E, Goss CW, Rauseo AM, Schmitz AJ, et al. SARS-CoV-2  
468 infection induces long-lived bone marrow plasma cells in humans. *Nature*. 2021;:1–5.
- 469 14. Saad-Roy CM, Wagner CE, Baker RE, Morris SE, Farrar J, Graham AL, et al. Immune life  
470 history, vaccination, and the dynamics of SARS-CoV-2 over the next 5 years. *Science*.  
471 2020;370:811–8.
- 472 15. Lavine JS, Bjornstad ON, Antia R. Immunological characteristics govern the transition of  
473 COVID-19 to endemicity. *Science*. 2021;371:741–5.
- 474 16. Evans MV, Garchitorena A, Rakotonanahary RJL, Drake JM, Andriamihaja B, Rajaonarifara  
475 E, et al. Reconciling model predictions with low reported cases of COVID-19 in Sub-Saharan  
476 Africa: insights from Madagascar. *Global Health Action*. 2020;13:1816044.
- 477 17. Roche B, Garchitorena A, Roiz D. The impact of lockdown strategies targeting age groups  
478 on the burden of COVID-19 in France. *Epidemics-neth*. 2020;33:100424.
- 479 18. Prem K, Cook AR, Jit M. Projecting social contact matrices in 152 countries using contact  
480 surveys and demographic data. *Plos Comput Biol*. 2017;13:e1005697.
- 481 19. Salje H, Kiem CT, Lefrancq N, Courtejoie N, Bosetti P, Paireau J, et al. Estimating the  
482 burden of SARS-CoV-2 in France. *Science*. 2020;369:208–11.
- 483 20. O’Driscoll M, Santos GRD, Wang L, Cummings DAT, Azman AS, Paireau J, et al. Age-  
484 specific mortality and immunity patterns of SARS-CoV-2. *Nature*. 2020.
- 485 21. Voysey M, Clemens SAC, Madhi SA, Weckx LY, Folegatti PM, Aley PK, et al. Single-dose

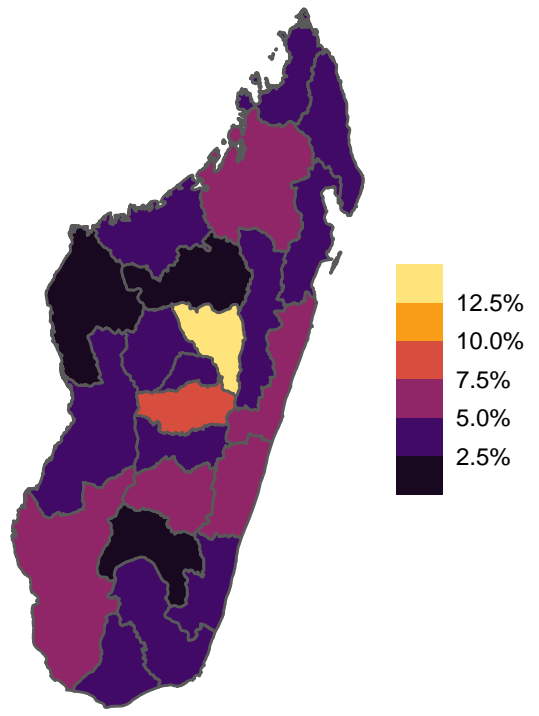


- 486 administration and the influence of the timing of the booster dose on immunogenicity and  
487 efficacy of ChAdOx1 nCoV-19 (AZD1222) vaccine: a pooled analysis of four randomised trials.  
488 *Lancet*. 2021;397:881–91.
- 489 22. Emary KRW, Golubchik T, Aley PK, Ariani CV, Angus B, Bibi S, et al. Efficacy of ChAdOx1  
490 nCoV-19 (AZD1222) vaccine against SARS-CoV-2 variant of concern 202012/01 (B.1.1.7): an  
491 exploratory analysis of a randomised controlled trial. *Lancet*. 2021;397:1351–62.
- 492 23. Schoenhals M, Rabenindrina N, Rakotondramanga JM, Dussart P, Randremanana R,  
493 Heraud J-M, et al. SARS-CoV-2 antibody seroprevalence follow-up in Malagasy blood donors  
494 during the 2020 COVID-19 Epidemic. *Ebiomedicine*. 2021;68:103419.
- 495 24. Dimitrov N, Goll S, Hupert N, Pourbohloul B, Meyers L. Optimizing Tactics for use of the  
496 U.S. Antiviral Strategic National Stockpile for Pandemic (H1N1) Influenza, 2009. *Plos Curr Infl*.  
497 2009;1:ecurrents.RRN1127.
- 498 25. Araz OM, Galvani A, Meyers LA. Geographic prioritization of distributing pandemic influenza  
499 vaccines. *Health Care Manag Sc*. 2012;15:175–87.
- 500 26. Pearson CAB, Clifford S, Pulliam JRC, Eggo RM. Pre-vaccination testing could expand  
501 coverage of two-dose COVID vaccines. *Wellcome Open Res*. 2021;6:105.
- 502 27. Tran TN-A, Wikle N, Albert J, Inam H, Strong E, Brinda K, et al. Optimal SARS-CoV-2  
503 vaccine allocation using real-time seroprevalence estimates in Rhode Island and  
504 Massachusetts. *Medrxiv*. 2021;:2021.01.12.21249694.
- 505 28. Takahashi S, Greenhouse B, Rodríguez-Barraquer I. Are Seroprevalence Estimates for  
506 Severe Acute Respiratory Syndrome Coronavirus 2 Biased? *J Infect Dis*. 2020;222:jiaa523.
- 507 29. Rasambainarivo F, Rasoanomenjanahary A, Rabarison JH, Ramiadantsoa T, Ratovoson R,  
508 Randremanana R, et al. Monitoring for outbreak associated excess mortality in an African city:  
509 Detection limits in Antananarivo, Madagascar. *Int J Infect Dis*. 2020.
- 510 30. Rice BL, Annapragada A, Baker RE, Bruijning M, Dotse-Gborgbortsi W, Mensah K, et al.  
511 Variation in SARS-CoV-2 outbreaks across sub-Saharan Africa. *Nat Med*. 2021;:1–7.

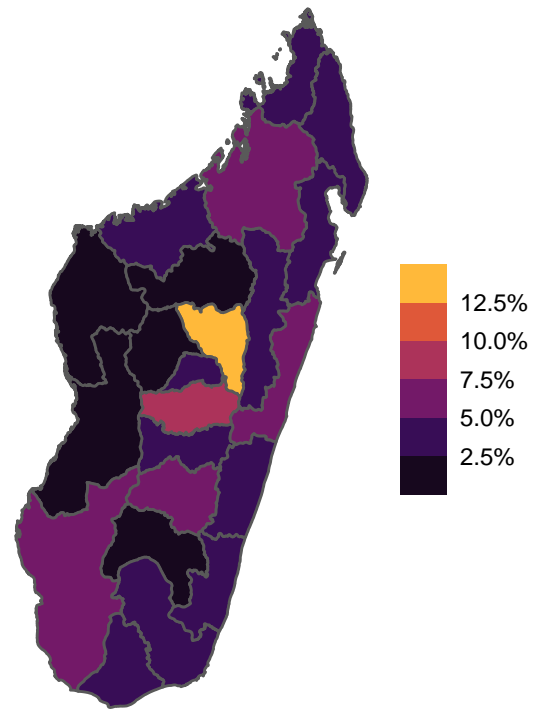
512 31. Wiens KE, Mawien PN, Rumunu J, Slater D, Jones FK, Moheed S, et al. Seroprevalence of  
513 Severe Acute Respiratory Syndrome Coronavirus 2 IgG in Juba, South Sudan, 2020 - Volume  
514 27, Number 6—June 2021 - Emerging Infectious Diseases journal - CDC. Emerg Infect Dis.  
515 2021;27:1598–606.



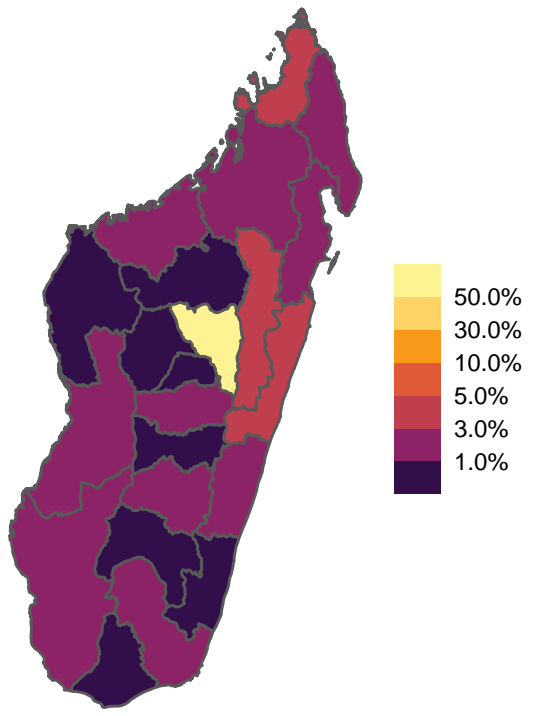
A



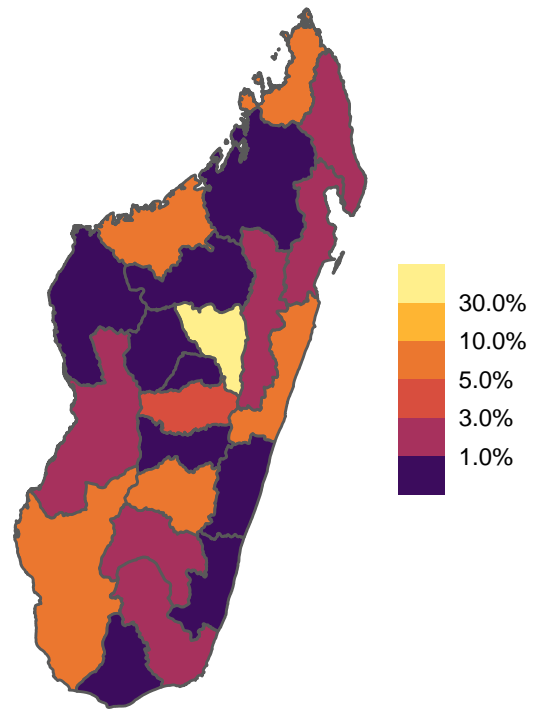
B



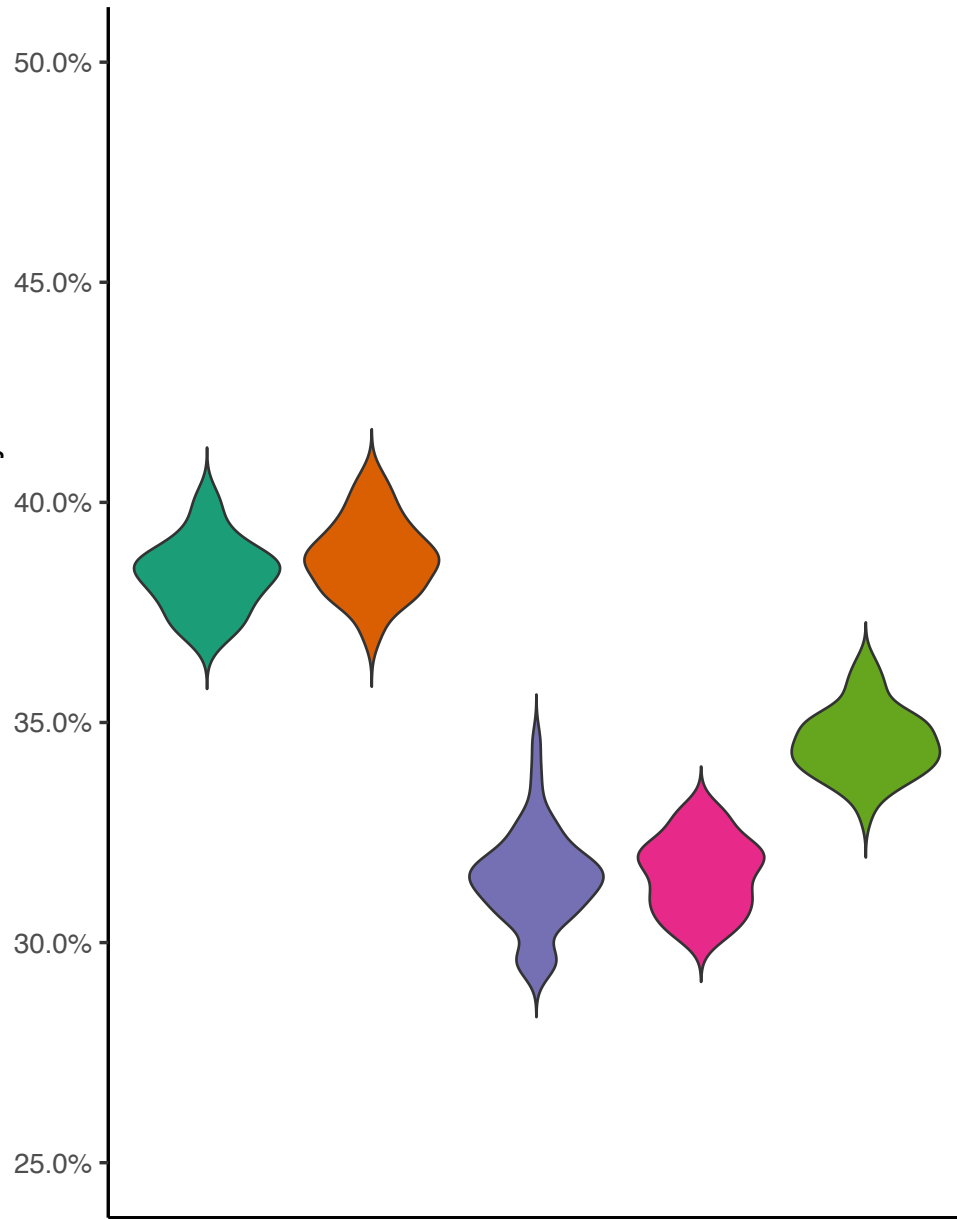
C



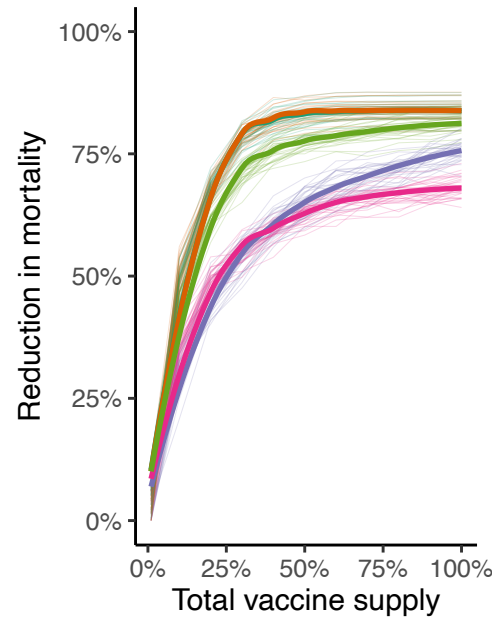
D



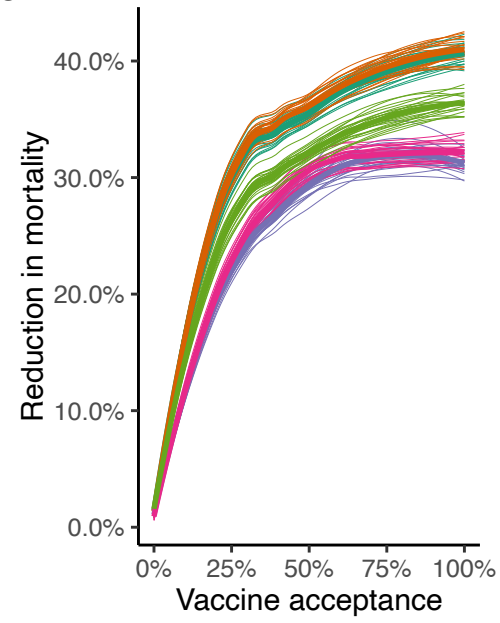
A



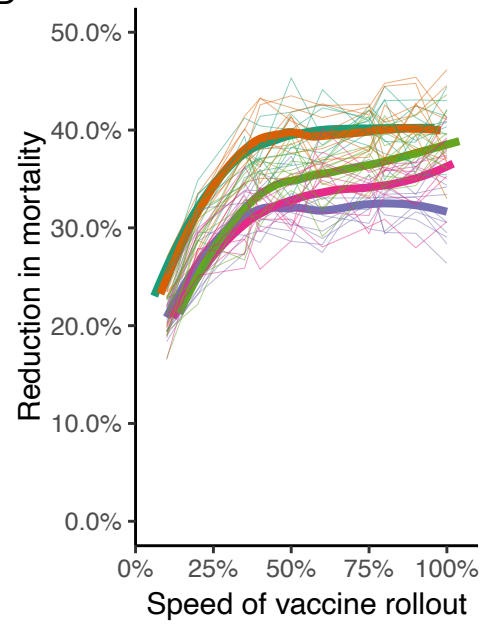
B



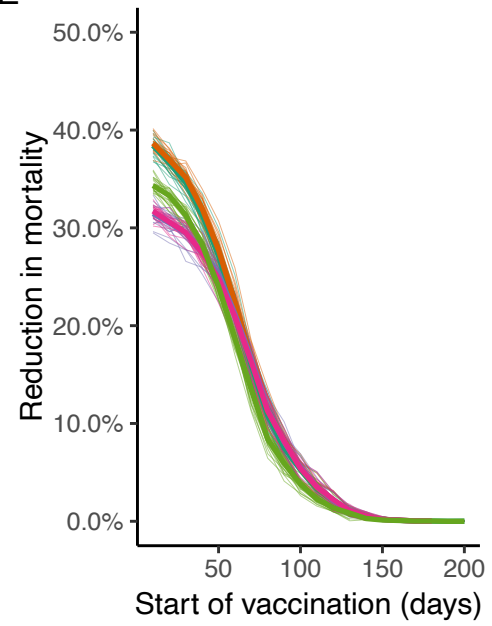
C



D



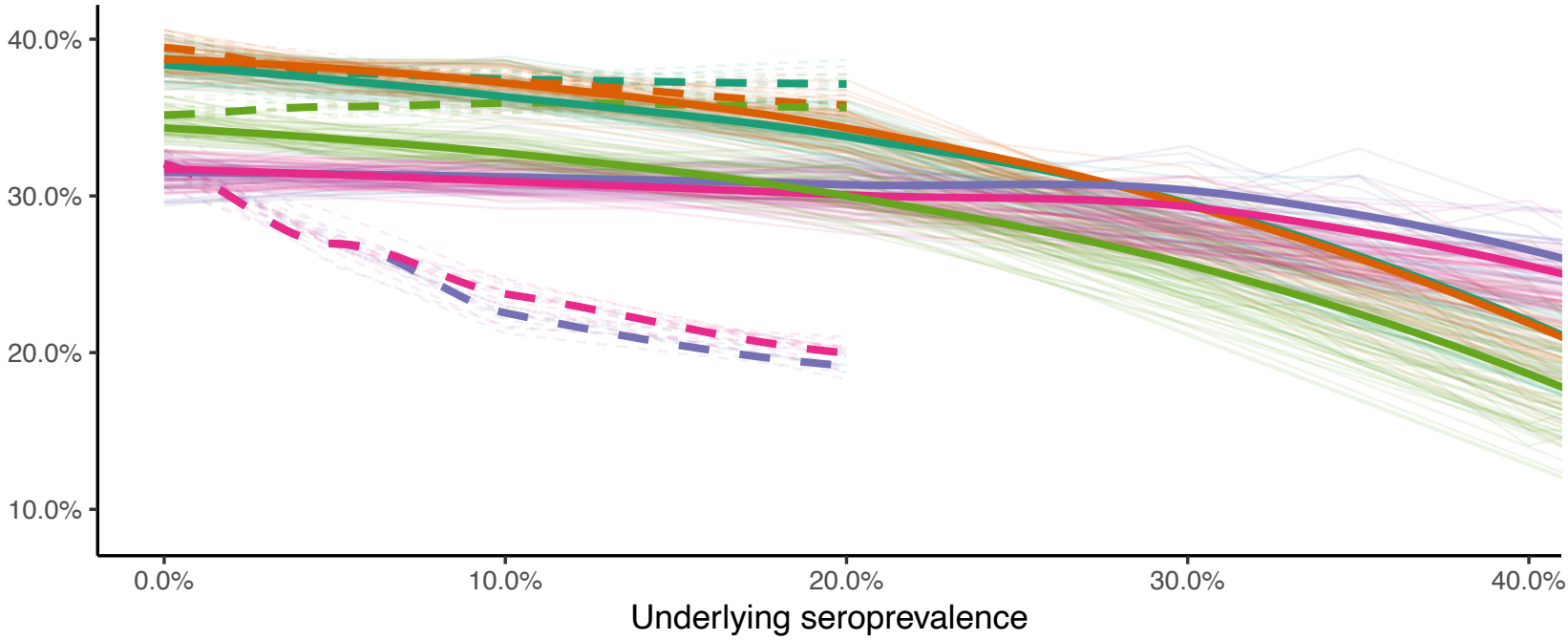
E



Allocation strategy Pro-rata Age Cases Deaths Uniform

A

Reduction in mortality

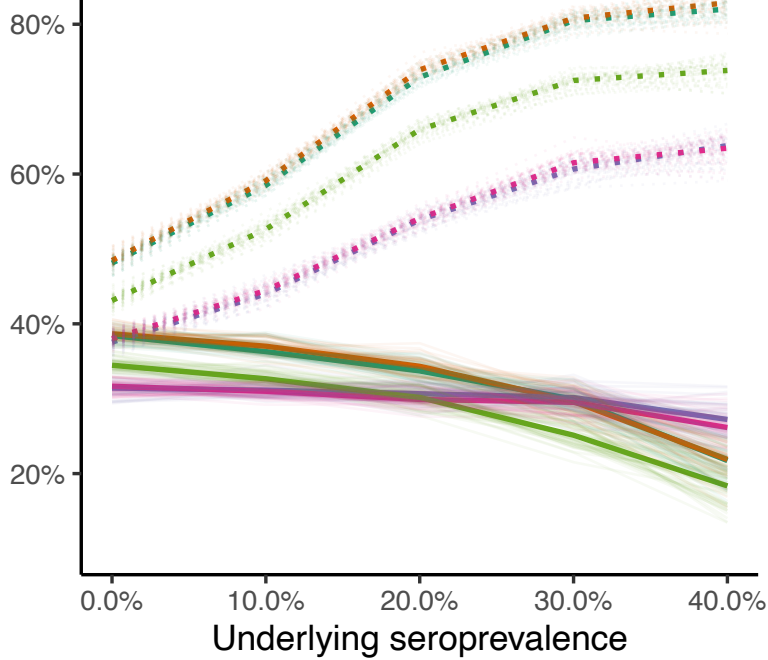


allocation strategy

- pro-rata
- age
- cases
- deaths
- uniform

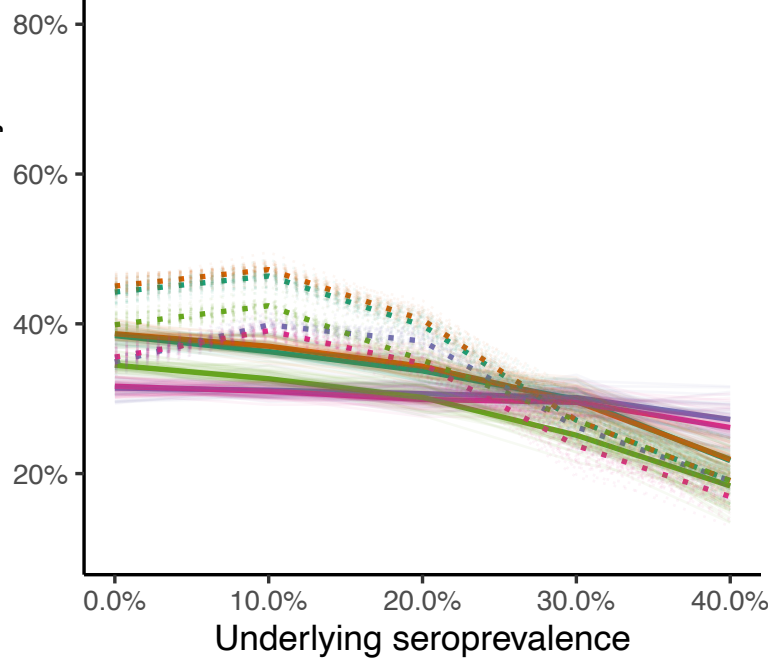
B

Reduction in mortality



C

Reduction in mortality



**Figure S1: Modeling framework.** The core of the model is similar to that of Roche et al. 2020. The same model has been applied to understanding the covid dynamics and the effectiveness of NPI at a national level in Madagascar (Evans et al. 2020). The stochastic simulation includes eight states: Susceptible (S), Exposed (E), Infected (symptomatic, I), Infected (Asymptomatic, A), and recovered from asymptomatic (U), recovered from symptomatic (R) infected symptomatic individuals who become severely ill (M) and infected symptomatic individuals who die (D) [17]. The population is divided into seven age classes (0-9;10-19;20-29;30-39;40-49;50-59; 60+) . Susceptible individuals in an age class  $i$  ( $S_i$ ) can get the infection according to the basal transmission rate ( $\beta$ ), the number of infectious (symptomatic and asymptomatic) individuals in each age class, and the contact rate among age classes. Once infected, an individual becomes infectious after an incubation period of 3 days, i.e. at a rate  $\varepsilon = 1/3$  days. Infectious individuals can be symptomatic (I) with a probability of  $p$  (assumed to be 40%) or asymptomatic (A) otherwise. Infectious individuals (I and A) can recover at a rate  $\sigma = 1/5$  days. Infectious symptomatic have a probability  $\alpha$  to become severely ill and a probability ( $\pi_i$ ) dependent on their age class to die from the disease (D).

We included vaccination into the model. The daily number of people vaccinated ( $n$ ) depends on the number of healthcare workers and the total number of individual vaccinated is limited by the acceptance ( $\eta_i$ ). Individuals in the compartment S, E, A, U, and R can be vaccinated. However, vaccinating non-susceptible individuals would lead to vaccine wastage. Thus, we only track the number of susceptibles  $n_s$  that are vaccinated. Without testing,  $n_s$  is drawn from a binomial distribution  $\text{Binomial}(n, S/(S + E + A + U + R))$ . We consider two scenarios to test for seroprevalence and thus avoid vaccine wastage (see main text). Additionally, vaccination can prioritize older individuals or distribute the doses randomly in each age class according to a multinomial distribution where the vector of probabilities are given by the frequency of the individuals in each age-class. Vaccinated individuals gain protection after a lag of 6-days

according to the vaccine efficacy ( $v$ ) which we assumed to be at 76% to approximate the clinical vaccine efficacy against symptomatic infection seen for the ChAdOx1 nCoV-19 (AZD1222). The actual number of people gaining protection is Binomial( $n_S, v$ ).

