

Association of post-traumatic stress disorder, traumatic brain injury, and related synergistic factors with prodromal Parkinson's Disease: A case-control study of 1.5 million Veterans

Gregory D. Scott^{1,2}, MD/PhD, Randy Woltjer¹, MD/PhD, Joseph F. Quinn^{3,4}, MD, Miranda M. Lim^{3,4,5}, MD/PhD

¹ Department of Pathology, Oregon Health and Science University, Portland, OR

² Department of Pathology and Laboratory Services, VA Portland Medical Center, Portland, OR

³ Department of Neurology, Oregon Health and Science University, Portland, OR

⁴ Department of Neurology, VA Portland Medical Center, Portland, OR

⁵ Department of Pulmonary and Critical Care Medicine, Oregon Health and Science University, Portland, OR

Corresponding Author:

Gregory Scott, MD, PhD

Oregon Health and Science University

Pathology School of Medicine Administrative Office

3181 S.W. Sam Jackson Park Road, L-113

Portland, OR 97239

Email: scottgre@ohsu.edu

Phone: 503-494-8276

Fax: 503-494-2025

ABSTRACT

Objective

To measure the association of pre-existing post-traumatic stress disorder (PTSD) and traumatic brain injury (TBI) on subsequent diagnosis of Parkinson's disease, and to identify common co-occurring sleep, mood, cognitive, and pain disorders that may amplify the association with Parkinson's disease.

Methods

Population-based case-control of 1.5 million Veterans within the Veterans Health Administration. Cases of coded Parkinson's disease were matched 4:1 to controls by gender, birth year, age, race, ethnicity, and smoking. For each disorder, the onset, first increase, and synergy index combined with post-traumatic stress disorder and traumatic brain injury were measured.

Results

Onset times for post-traumatic stress disorder and traumatic brain injury were -22.5 and -10.1 years before diagnosis of Parkinson's disease. For post-traumatic stress disorder, synergy was greatest with chronic pain, mild cognitive impairment, Rapid eye movement behavior sleep disorder, and periodic limb movement disorder and started at -11, -9, -6, -7 years. For traumatic brain injury, synergy was greatest with migraine, anxiety, sleep apnea, hypersomnia, insomnia, and depression and started at -8, -8, -12, -6, -4, and -5 years.

Interpretation

There is a long timeline of association of post-traumatic stress disorder and traumatic brain with prodromal Parkinson's disease and greater-than-additive interactions with other non-motor neurobehavioral disorders. These data provide a more detailed timecourse for post-traumatic stress disorder and traumatic brain injury and identify early synergies potentially worth targeting in clinical trials.

INTRODUCTION

Parkinson's disease (PD) is an incurable disease where significant brain damage has already occurred by the time of diagnosis and modifiable risk factors remain elusive and poorly understood [1]. Two such risk factors related to neurotrauma, traumatic brain injury (TBI) and post-traumatic stress disorder (PTSD), have emerged and the link to development of PD has been controversial. Studies have implicated head trauma/TBI as an environmental risk factor and mechanistic evidence in model systems support this link [2,3], however the link in humans is more controversial with studies supporting both causation and reverse causation (more head trauma from PD) [1]. Recent meta-analyses and those with a longer lag time between head trauma and PD support that it is a true association [4,5].

The link between PTSD and PD has only recently been identified. Our group and others have found an association between PTSD and rapid eye movement behavior sleep disorder (RBD), the strongest prodromal PD marker [6,7], and two studies have reported direct association but are confounded by potential reverse causation due to short lag times [8,9]. In addition to limited timing information and short lag times, the impact of established risk factors, smoking and Agent Orange exposure, was not previously tested and interactions between TBI, PTSD, and established non-motor neurological disorders were not tested.

TBI and PTSD both prominently feature sleep, pain, mood, and cognitive disturbances as hallmarks of chronic neurobehavioral symptomatology. These are potentially treatable; therefore, in looking for modifiable risk factors for PD, examining the synergy between TBI, PTSD, and these neurobehavioral disorders will be critical. Moreover, the timecourse of sleep, pain, mood, and cognitive disorders is incompletely understood in idiopathic prodromal PD.

In order to address these knowledge gaps, we turned to the Veteran population, an ideal population to answer these questions as they are enriched for PTSD, TBI, and PD [10].

This study describes a novel timecourse for prodromal non-motor PD, including TBI, PTSD, and associated neurobehavioral disorders, in a large cohort. We controlled for previously untested confounders, and identified more-than-additive interactions of TBI and PTSD with disorders of sleep, pain, mood, and cognition in increasing PD odds decades later. These synergistic interactions are likely useful in diagnostic screening and can guide trials of multi-pronged interventions, such as chronic pain in PTSD patients, to potential reduce PD risk.

METHODS

Data was obtained from the Veterans Health Administration Corporate Data Warehouse (CDW) under institutional IRB approval (MIRB #04744). The cohort (**Table 1**) was also used in an unrelated study [11]. Cases of PD were identified by ICD code (ICD-9 332.0 and ICD-10 G20) which has a positive predictive value of 75.6% in the VA population [12]. Four controls per case were randomly chosen followed by matching by gender, ethnicity, race, age, smoking status [13], and birth year. Agent Orange exposure and period of duty was collected. Index date was defined in controls as the same age (month and year) as their matched case at PD diagnosis [14]. Years before index date are indicated by a minus symbol. Diagnostic codes (ICD-9, ICD-10) were collected within twenty years of the index date and yearly prevalence was calculated for each disorder as a proportion containing data at or before the year of interest. Analysis was conducted using RStudio (RStudio Team (2021). RStudio: Integrated Development for R. RStudio, PBC, Boston, MA URL <http://www.rstudio.com/>). Yearly association of disorders (odds ratio, OR, and 95% confidence interval, CI) with PD was calculated using conditional logistic regression adjusted for matching criteria: age, gender, smoking status, race, ethnicity, and birth year. Yearly P values were adjusted for multiple comparisons using Bonferroni correction. For onset times, linear or logarithmic regression was used depending on optimal goodness-of-fit, R^2 , to identify intersection of prevalence in PD versus controls [15,16]. Estimated onset occurred 6.1 ± 5.4 years before first within-year significant increase in PD (**Table 2**). Synergy index (S), the relative excess risk of both exposures with interaction versus without interaction was measured using the

epidemiology statistics package, *epiR* [17]. Synergy index is less susceptible to bias by model covariates compared to other interaction measures [18].

RESULTS

Traumatic brain injury and post-traumatic stress disorder

PTSD and TBI were increased before PD diagnosis compared to matched controls (**Figure 1, Table 2, Supplementary Table 1**). PTSD showed earlier estimated onset time of -22.5 years, measurable increase in PD at -18 years, higher peak prevalence of 13.7% in PD and 10.9% in controls, and lower OR of 1.41 CI[1.39,1.44]. TBI had an onset of -10.1 years, first increase in PD at -7 years, peak prevalence of 2.2% in PD and 1.5% in controls, and slightly higher OR at 1.61 CI [1.54,1.67]. PTSD and TBI showed positive interaction above additivity starting at -8 years ($S = 2.9$, CI [1.01, 8.3]) and extending to -1 years ($S = 2.3$, CI [1.6, 3.5]).

Pain and migraine

Pain disorders were increased before PD diagnosis with headache, migraine, and chronic pain showing earlier and greater association compared to neck, back, and joint (regional) pain. (**Table 2, Figure 2, Supplementary Table 1**). Headache and migraine had earlier onsets at -26.8 and -24.8 years, measurable increase at -14 years, peak prevalence of 8.7% and 2.4% in PD, 7.7% and 2.1% in controls, and peak OR of 1.22 CI [1.2,1.25] at year -1 and 1.26 CI [1.12,1.36] at year -11 respectively. Chronic pain onset was -13.9 years, measurable difference at -9 years, peak prevalence of 4.1% in PD and 3.2% in controls, and larger peak OR of 1.5 CI [1.46,1.54] at -1 year. Neck and back pain onsets occurred at -7.4 and -4.3 years, first measured differences at -1 year, peak prevalence was 9.2% and 16.0% in PD, and 9.1% and 14.8% in controls, and small peak ORs of 1.1 CI[1.08,1.12] and 1.18 CI[1.17,1.2] at year -1 respectively. Joint pain did not converge PD and control prevalence and showed reduced PD prevalence starting at year -2 with peak prevalence of 37.7% in PD and 38.4% in controls.

Cognitive disorders

Cognitive disorders were increased in prodromal PD with differing onset and association for mild cognitive impairment and cognitive decline (**Table 2, Figure 2, Supplementary Table 1**). Mild cognitive impairment showed earlier onset at -10.3 years, first increase in PD at -10 years, peak prevalence of 2.5% in PD and 0.7% in controls, and peak OR of 3.79 CI[3.63,3.95]. Cognitive decline showed later onset at -5.4 years, increase at -4 years, peak prevalence of 3.5% and 1.4%, and peak OR of 2.29 CI [2.23,2.39].

Mood and anxiety disorders

Multiple mood/anxiety disorders were increased before PD diagnosis at early timepoints and with high baseline prevalence (**Table 2, Figure 2, Supplementary Table 1**). Bipolar disorder showed onset at -40 years, measured increase at -19 years, peak prevalence of 5.5% in PD and 2.4% in controls, and peak OR of 2.7 CI[1.91,3.83]. Anxiety disorder and depression onset times were -22.6 and -17.6 years, measurable increases in PD started at -15 years, peak prevalence was 23.0% and 29.4% in PD and 13.0% and 23.0% in controls, and peak ORs were 1.44 CI[1.42,1.46] and 1.52 CI[1.5,1.54] respectively.

Sleep disorders in prodromal PD

Sleep disorders showed variable onset, time of first measured increase, PD association, and prevalence (**Table 2, Figure 2, Supplementary Table 1**). RBD showed onset at -15.6 years, first measured increase at -11 years, higher OR of 7.2 CI[6.27,8.27], and low peak prevalence of 0.3% in PD and 0.05% in controls. Restless legs syndrome and unspecified sleep movement disorder showed high odds ratios but that peaked earlier and with wider confidence intervals of 28.93 CI[3.63,230.18] at year -4 and 9.89 CI[2.61,37.45] at year -13. Onsets for

restless legs syndrome and unspecified sleep movement disorder were -15.5 and -17.1 years, first measured increases were years -4 and -13, and peak prevalence was 0.05% and 0.13% in PD and 0.01% and 0.04% in controls respectively. Hypersomnia and inadequate sleep showed early peak ORs at years -13 and -9 but with smaller magnitudes of 2.35 CI[2.09,2.64] and 2.67 CI[1.41,5.05]. Hypersomnia and inadequate sleep showed onset times -27.9 and -16.5, significant differences starting at -18 and -9 years, and peak prevalence of 2.8% and 0.08% in PD and 1.6% and 0.05% in controls. Sleep apnea and insomnia were higher prevalence and earlier onset with peak prevalence of 13% and 9.5% in PD and 9.7% and 8.5% in controls, onsets at -20.2 and -11.1 years, and first differences at -17 and -11 years. The ORs of sleep apnea and insomnia were smaller at 1.6 CI[1.57,1.63] and 1.24 CI[1.22,1.27]. Circadian rhythm disorder and periodic limb movement disorder had different onsets at -20.9 and -13.9 years respectively but were otherwise similar with PD increases starting at -8 and -6 years, peak prevalence of 0.14% and 0.37% in PD and 0.04% and 0.22% in controls, and peak ORs of 1.93 CI[1.63,2.29] and 1.92 CI[1.75,2.11]. Remaining disorders had prevalence below 0.4% with either closer to the time of diagnosis of PD or no difference (data not shown).

Synergy of TBI with pain, cognition, mood/anxiety, and sleep

Interactions above additivity (synergy) were present between TBI and other disorders, with longest duration and largest magnitude seen for sleep apnea, migraine, and anxiety and shorter duration for hypersomnia, insomnia, and depression (**Figure 3A**). There was also 3-year-long early synergy with sleep movement disorders that was not significant closer to PD diagnosis or for individual disorders (data not shown).

TBI synergy with sleep apnea began at year -12 (max S = 15.4, CI[1.1, 205.6] at year -12), migraine at year -8 (max S = 25.0, CI[3.0, 207.7] at year -8), and anxiety at year -8 (max S = 16.2, CI[2.6, 100.4]). Shorter synergies began at year -6 for hypersomnia (max S = 4.8, CI[1.7,13.6] at year -6), year -5 for depression (max S = 2.2, CI[1.0, 4.9] at year -5), and year -4 for insomnia (max S = 8.2, CI[1.1, 59.5] at year -4). Short synergy between TBI and sleep movement disorders was present between years -8 to -6 (max S = 31.4, CI[1.9,521.0] at year -8) and with cognitive decline between years -12 and -10 (max S = 1.7, CI[1.2,2.4] at year -10).

Synergy of PTSD with pain, cognition, mood/anxiety, and sleep

Synergy was seen between PTSD and other disorders, with longest duration and largest magnitude seen for chronic pain, sleep movement disorders, and mild cognitive impairment (**Figure 3B**) and lower magnitude for sleep apnea, mood/anxiety disorders, and additional pain conditions.

PTSD synergy with sleep movement disorders began at -11 years (max S = 33.7, CI [4.6, 244.8] at year -11), specifically period limb movement disorder at year -7 (max S = 5.4, CI [1.02, 28.6] at year -7) and intermittently significant for REM-behavior sleep disorder at years -1, -2, -3, -6 (max S = 5.2, CI[1.02, 26.5] at year -6). Synergy with chronic pain started year -11 (max S = 24, CI[2.2, 255.8] at year -11), mild cognitive impairment at year -9 (max S = 7.7 (CI [1.2,47.1] at year -8), sleep apnea at year -10 (max S = 1.6, CI [1.4,1.8]) and hypersomnia at year -2 (max S = 1.3, CI [1.05, 1.82]). Synergy with anxiety began at year -10 (max S = 1.5, CI [1.1,2.0] and depression at -12 years (max S = 1.37, CI [1.0, 1.8] at year -12). Onsets with other pain disorders including headache, migraine, neck pain, back pain, and regional joint pain (e.g. shoulder, ankle, wrist) were -12, -5, -9, -2, and -15 years with maximum synergy of 2.3 CI[1.6, 3.2], 2.0 CI[1.4,3.0], 2.5 CI[1.3,4.7], 1.4 CI[1.0,1.9], and 2.5 CI[1.2,5.2]. Other interactions were not significant or showed isolated timepoints (data not shown).

Agent Orange and Period of Duty

Re-analysis was performed with added agent orange exposure and period of duty predictors (**Table 3**). Results were not significantly different from primary analysis both in terms of first increase in PD (mean -11.2±4.6 versus -10.9±5.5 years before diagnosis, p=0.83) and PD association (mean odds ratios 3.63±6.13 vs. 3.70±6.17, p=0.97)

DISCUSSION

This study is the first to produce a detailed timecourse for TBI and PTSD in prodromal PD, as well as describe their synergy with other related neurobehavioral symptoms. Most notable were synergies with chronic pain, migraine, sleep apnea, sleep movement disorders and parasomnias, anxiety disorders, and mild cognitive impairment that appeared decades before PD. Evidence for TBI and PTSD as risk factors for PD are only now becoming apparent, and the expansive nature of this time series informs rising demand for early screening and interventions in high-risk patients. This study specifically examined synergistic and potentially modifiable comorbidities with TBI and PTSD to model novel approaches for possible PD screening and risk reduction and identify the sensitive time window.

As we are increasingly identifying prodromal PD, it is important to confirm risk factors like TBI and PTSD, and map interactions to answer when and what disorders make prodromal PD more likely and are worth targeting as endophenotypes within clinical trials. Furthermore, it is possible that the synergistic comorbidities alongside TBI and PTSD may represent modifiable risk factors in phenoconversion to PD. The latest phase II discontinuation of two major PD drug candidates, cinpanemab and venglustat, underscores recent successes in screening research to optimize trials by including prodromal patients before significant brain damage. For example, α -synuclein seeding assays are predicting RBD phenoconversion which will potentially shift PD neuroprotection trials some 7.5 years earlier based on median phenoconversion rates [19–21]. The current study fills extensive missing details about targets of upcoming clinical trials and pushes back the window of opportunity to roughly two decades. This study confirmed PTSD and TBI as lengthy prodromal markers with -22.5 and -10.1 year onsets and highlights potent synergy (e.g. PTSD and chronic pain) that could guide screening and intervention trials. Furthermore, the current project re-emphasizes understudied prodromal markers like chronic pain, headache/migraine, and sleep apnea [22,23] and suggests this window of possible intervention is present for many disorders.

We found synergy between PTSD and TBI up to 8 years before PD diagnosis. Future studies are needed to study PTSD-associated PD and account for shared environmental covariates (e.g. head trauma), opposing covariates (e.g. smoking, age, gender), and recently discovered shared susceptibility genes (e.g. PARK2) [24]. We also found TBI associated with PD up to 10 years later, which has been confounded in most studies by possible reverse causation [1]. Our study aligns with recent meta-analyses and those with longer lag times in supporting causation over reverse causation [4,5].

This study also addresses another major knowledge gap with regard to more detailed prodromal timing of PTSD, TBI, as well as pain, sleep, cognitive, and mood/anxiety disorders. Our findings are consistent with timing from other previous studies showing 8 years for cognitive impairment [25], 25 years for headache/migraine [23], 20 years for anxiety [26], 18 years for pooled RBD studies [26], and 5 years for cognitive decline in individuals with RBD phenoconverting to PD [15]. The lengthy timecourse data in this study will help the search for putative time-limited original insults [27], catch possible PD subgroups obscured by later convergent pathology, and directly contribute to prodromal screening tools [14] which will be an impactful contribution once effective neuroprotective therapy is available.

Limitations of this study include those associated with retrospective case-control studies reliant on diagnostic coding. Previous studies measuring the sensitivity, specificity, positive predictive values, and negative predictive values for ICD-9 and ICD-10 codes typically report 70-95% for PTSD and PD and similar specificity for head trauma/TBI, but with lower sensitivity (<50%) particularly in milder cases in younger males [12,28–30]. A likely consequence of PD miscoding is lowering of prodromal association strengths. For example, false-positive coding of drug-induced parkinsonism is unlikely to have the same prodromal disorders ten years earlier. Another limitation is misdiagnosis since some disorders are diagnostic mimics (e.g. PTSD and anxiety disorder) which could skew associations and estimated onsets. Future studies using validated questionnaire tools and prospective design will more accurately measure impact of misdiagnosis on incident PD. Another

limitation is under-representation of female gender which may skew gender-associated entities like PTSD, depression, anxiety, headache, migraine [23,31–33] .

Reassuringly, previous work consistent with our findings suggests our results are not spurious. Odds/hazard ratios of PD after head trauma were similar to recent VA data (1.71 [1.53,1.92]) [5] and pooled results of 15 other studies (1.45 [1.18,1.78]) [34]. Our TBI onset (-10.1 years) is also consistent with two studies testing ≥ 10 year lag times [35,36]. Association of PTSD with PD has been demonstrated albeit with higher odds/hazard ratio of 2.7 [2.6,2.7] we suspect from stricter inclusion since they also had higher TBI associations versus ours and many others [5,8,9,37]. Prior research of pain, sleep, cognition, mood also show agreement including odds/hazard ratios for anxiety (range 1.4-1.6) [38], cognition impairment/decline (2.7 [1.4,5.0] and 1.7 [1.3,2.3]) [14,25], bipolar disorder (3.2 [1.8,5.4]) [39], pain (2.1 [0.8,4.9]) [40], and depression (range 1.5-3.2) [38], as well as similar lag/onset cutoffs for headache/migraine, cognitive impairment, anxiety, RBD, and cognitive decline (discussed above) [15,23,25].

Overall, these data confirmed the association of TBI and PTSD during an extraordinarily long prodromal window prior to diagnosis of PD, and identified novel synergistic interactions between disorders that can aid in the development of more nuanced screening tools and in the endophenotyping of patient selections for neuroprotective clinical trials. This information will also allow future intervention trials to potentially optimize treatment combinations, as at-risk PD patients are increasingly and earlier identified.

AUTHOR CONTRIBUTIONS:

- 1) Research project: Conception (GS, ML, JQ, RW), Organization (GS, ML), Execution (GS)
- 2) Statistical Analysis: Design and Execution (GS, ML), Review and Critique (GS, ML, JW, JQ),
- 3) Manuscript: Writing of the first draft (GS, ML), Review and Critique (GS, ML, RW, JQ)

CONFLICTS OF INTEREST:

none

FUNDING SOURCES FOR THE STUDY:

none

FIGURES AND LEGENDS

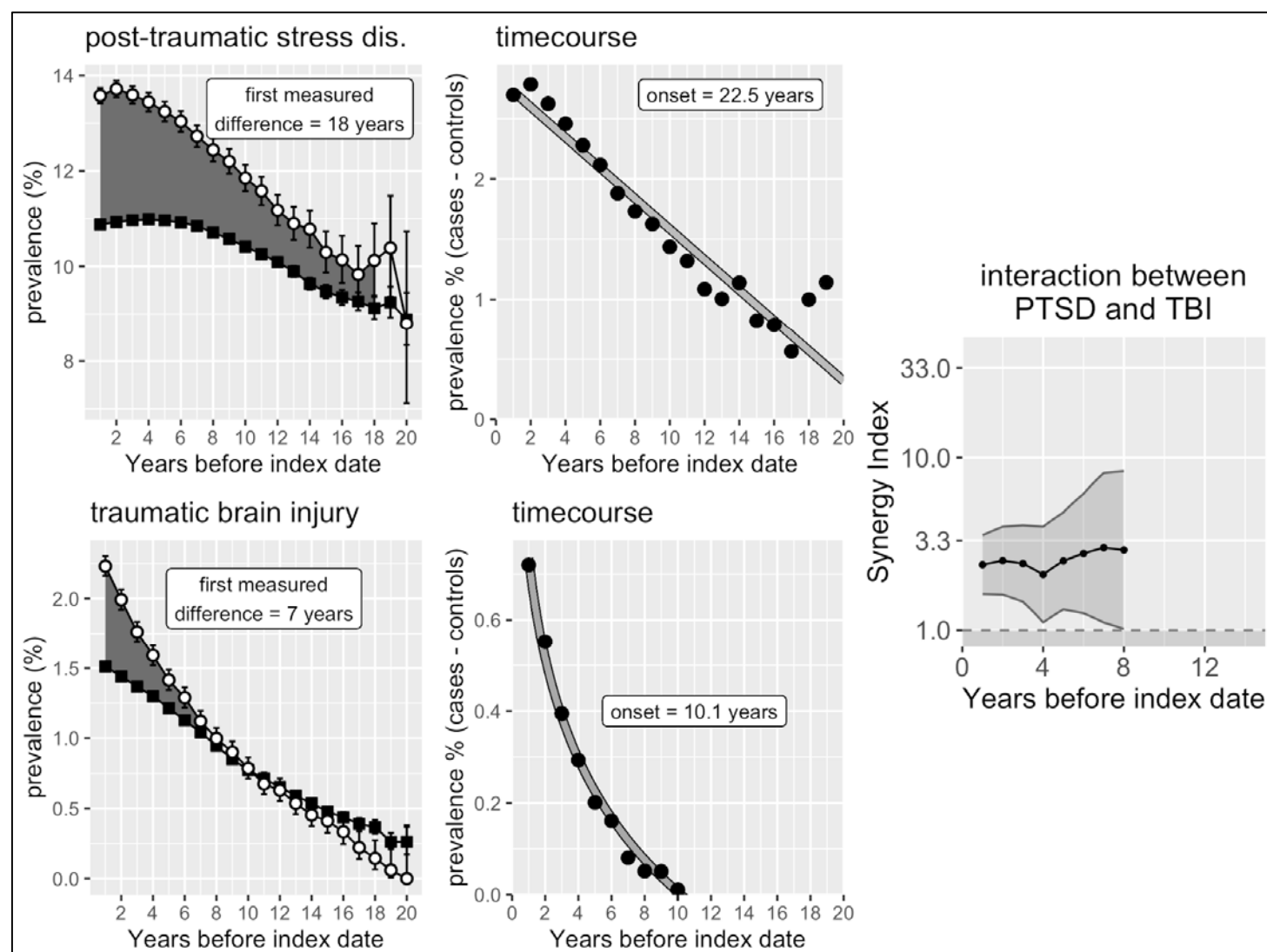


Figure 1: Post-traumatic stress disorder and traumatic brain injury in prodromal Parkinson's disease versus controls. Left panels: Mean prevalence and standard deviations are plotted for Parkinson's disease (white) and matched controls (black) beginning twenty years before the index date. Years with significantly different prevalence between Parkinson's disease and controls are indicated by gray shading. Middle panels: Yearly difference in prevalence for cases minus controls (circles) modeled by linear or logarithmic regression (solid lines) to estimate onset time (x-intercept). Regression equations and fits summarized in supplemental material. Right panel: Positive interaction between post-traumatic stress disorder and traumatic brain injury before diagnosis of Parkinson's disease. Synergy index (black) and 95% confidence intervals (gray) plotted for twenty years before index date with values greater than one (above dashed line) indicating interaction over additivity.

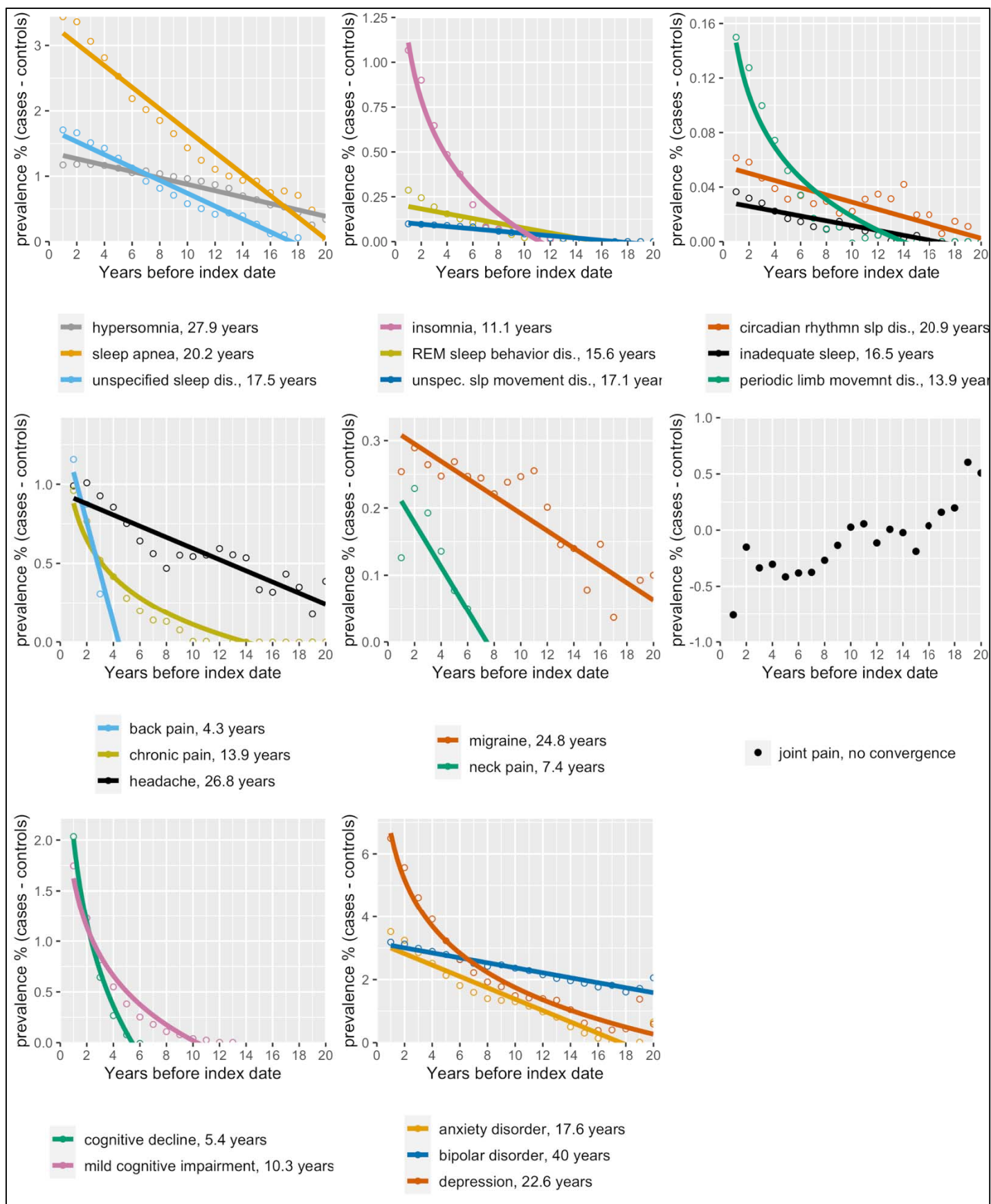


Figure 2: Prodrromal timecourse for sleep (top), pain (middle) as well as cognitive and mood (bottom) disorders of Parkinson's disease. Yearly difference in prevalence for cases minus controls (open circles) are modeled by

linear or logarithmic regression (solid lines) to estimate onset time (x-intercept). Onset times are the zero crossing of case-control regression lines.

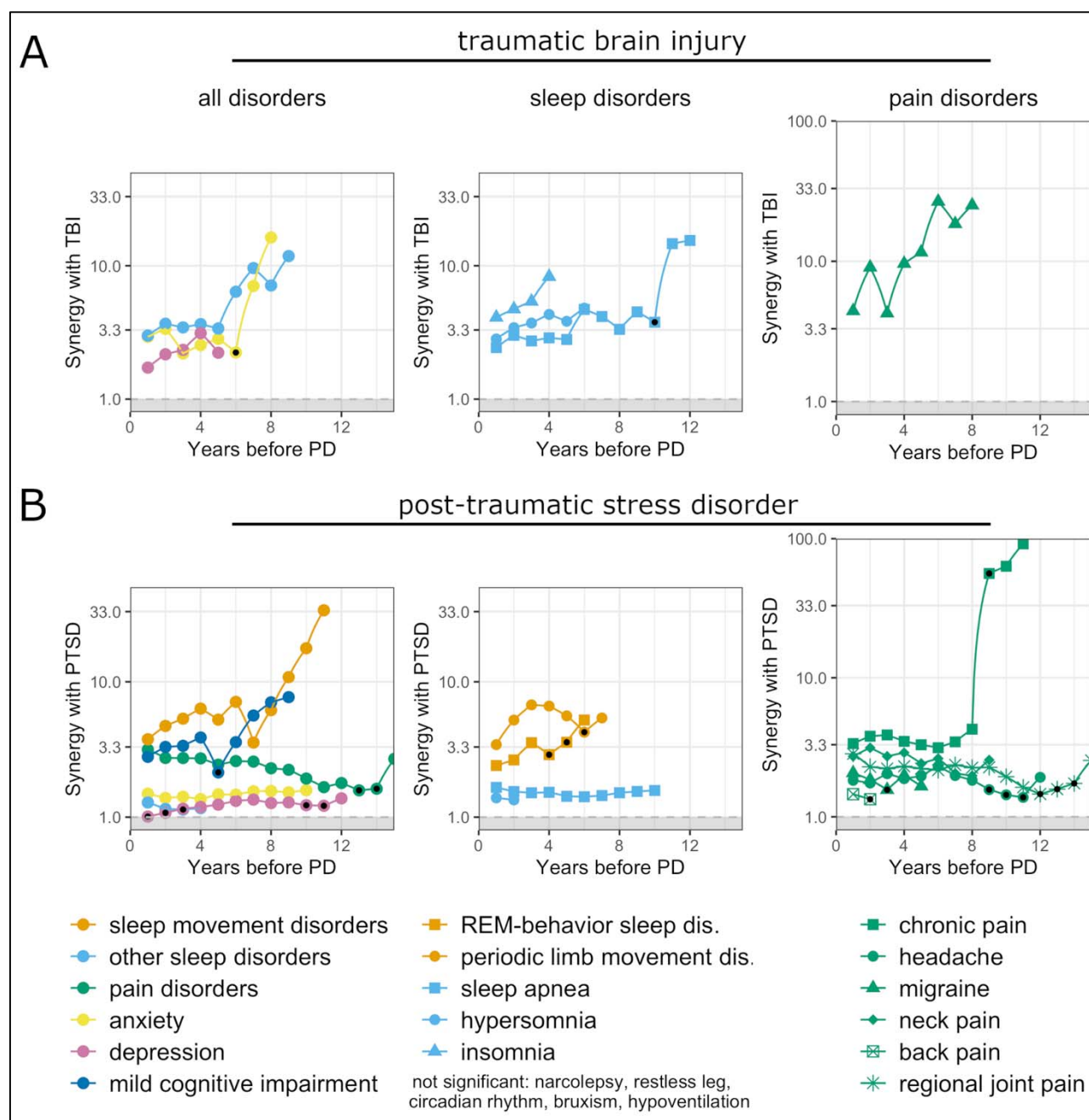


Figure 3: Synergy between non-motor neurological disorders and (A) traumatic brain injury and (B) post-traumatic stress disorder in influencing odds of later Parkinson's disease (PD). Synergy index plotted for each disorder spanning fifteen years before index date. Values greater than one indicate interaction over additivity. Black dots indicate timepoints where 95% confidence interval crosses a value of 1 (see confidence intervals in individual plots in supplement).

TABLES

Table 1: Study Cohort

| Characteristics | Parkinson's Disease (n=303693) | Controls (n=1214772) |
|---|--------------------------------|----------------------|
| Age at index date, mean (SD) ^{**} , years | 74.7 (9.6) | 74.7 (9.6) |
| Birth year, mean (SD) ^{**} , years | 1934.3 (11.4) | 1934.3 (11.4) |
| Gender, No. (%) | | |
| Female | 5419 (1.8) | 21676 (1.8) |
| Male | 298274 (98.2) | 1193096 (98.2) |
| Race, No. (%) | | |
| African American, Black | 16634 (5.5) | 66536 (5.5) |
| Asian, Native American, Alaskan, Hawaiian, Pacific Islander | 4366 (1.4) | 17464 (1.4) |
| White | 209774 (69.1) | 839096 (69.1) |
| Unknown | 72919 (24) | 291676 (24) |
| Ethnicity, No. (%) | | |
| Latino, Hispanic | 10757 (3.5) | 43028 (3.5) |
| Not Latino, Not Hispanic | 228624 (75.3) | 914496 (75.3) |
| Unknown | 64312 (21.2) | 257248 (21.2) |
| Smoking status, No. (%) | | |
| Never | 96428 (31.8) | 385712 (31.8) |
| Former | 86660 (28.5) | 346640 (28.5) |
| Current | 27992 (9.2) | 111968 (9.2) |
| Unknown | 92613 (30.5) | 370452 (30.5) |
| Agent Orange exposure, No. (%) [*] | | |
| No | 272832 (90%) | 1128279 (93%) |
| Yes | 30225 (9.95%) | 85492 (7.04%) |
| Unknown | 636 (0.20%) | 1000 (0.082%) |
| Period of duty, No. (%) [*] | | |
| Vietnam War | 105232 (34.6%) | 410871 (33.8%) |
| Korean War | 62962 (20.7%) | 257329 (21.1%) |
| World War II | 91686 (30.1%) | 371495 (30.5%) |
| Other | 43813 (14.4%) | 175076 (14.4%) |

* significantly different proportions in Parkinson's disease versus controls, $p < 0.001$

** standard deviations for age and birth year are different at 1×10^{-5} level

Table 2. Onset, earliest measured difference, and association with prodromal PD

| | Estimated onset time | First measured difference | max odds ratio (year) | 95% CI | p |
|---------------------------------------|--------------------------|---------------------------------|--------------------------|------------|-----|
| | (years before diagnosis) | | | | |
| Traumatic brain injury | 10.1 | 7 | 1.61 (-1) | 1.54-1.67 | *** |
| Post-traumatic stress disorder | 22.5 | 18 | 1.41 (-1) | 1.39-1.44 | *** |
| Pain | | | | | |
| Headache | 26.8 | 14 | 1.22 (-1) | 1.2-1.25 | *** |
| Migraine | 24.8 | 14 | 1.26 (-11) | 1.12-1.36 | *** |
| Chronic pain | 13.9 | 9 | 1.5 (-1) | 1.46-1.54 | *** |
| Neck pain | 7.4 | 1 | 1.1 (-1) | 1.08-1.12 | *** |
| Back pain | 4.3 | 1 | 1.18 (-1) | 1.17-1.2 | *** |
| Joint (regional) pain | - | 2 | - | - | - |
| Cognitive disorder | | | | | |
| Mild cognitive impairment | 10.3 | 10 | 3.79 (-1) | 3.63-3.95 | *** |
| Cognitive decline | 5.4 | 4 | 2.29 (-1) | 2.23-2.39 | *** |
| Neuro-psychiatric disorders | | | | | |
| Bipolar disorder | 40.0 | 19 | 2.71 (-19) | 1.91-3.83 | *** |
| Anxiety disorder | 18.5 | 15 | 1.44 (-1) | 1.42-1.46 | *** |
| Depression | 17.6 | 15 | 1.52 (-1) | 1.5-1.54 | *** |
| Sleep-related disorders | | | | | |
| Hypersomnia | 27.9 | 18 | 2.35 (-13) | 2.09-2.64 | *** |
| Circadian rhythm disorder | 20.9 | 8 | 1.93 (-2) | 1.63-2.29 | *** |
| Sleep apnea | 20.2 | 17 | 1.6 (-1) | 1.57-1.63 | *** |
| Unspecified sleep disorder | 17.5 | 14 | 1.62 (-1) | 1.58-1.66 | *** |
| Unspecified sleep movement disorder | 17.1 | 13 | 9.89 (-13) | 2.61-37.4 | * |
| REM sleep behavior disorder | 15.6 | 11 | 7.2 (-1) | 6.27-8.27 | *** |
| Restless legs syndrome | 15.5 | 4 | 28.93 (-4) | 3.63-230.1 | * |
| Periodic limb movement disorder | 13.9 | 6 | 1.92 (-1) | 1.75-2.11 | *** |
| Insomnia | 11.1 | 11 | 1.24 (-1) | 1.22-1.27 | *** |

Table 3. Addition of agent orange and period of duty predictors: earliest measured difference and association with prodromal PD

| | First measured difference (year before diagnosis) | max odds ratio (year) | 95% CI | p |
|---------------------------------------|--|--------------------------|-------------|-----|
| Traumatic brain injury | 7 | 1.61 (-1) | 1.55-1.67 | *** |
| Post-traumatic stress disorder | 15 | 1.32 (-1) | 1.29-1.34 | *** |
| Pain | | | | |
| Headache | 14 | 1.22 (-1) | 1.19-1.24 | *** |
| Migraine | 14 | 1.25 (-11) | 1.12-1.35 | *** |
| Chronic pain | 9 | 1.49 (-1) | 1.45-1.54 | *** |
| Neck pain | 9 | 1.1 (-1) | 1.08-1.12 | *** |
| Back pain | 4 | 1.18 (-1) | 1.17-1.2 | *** |
| Joint (regional) pain | - | - | - | - |
| Cognitive disorder | | | | |
| Mild cognitive impairment | 10 | 3.76 (-1) | 3.6-3.92 | *** |
| Cognitive decline | 4 | 2.29 (-1) | 2.22-2.38 | *** |
| Neuro-psychiatric disorders | | | | |
| Bipolar disorder | 19 | 2.74 (-19) | 1.93-3.89 | *** |
| Anxiety disorder | 15 | 1.44 (-1) | 1.41-1.46 | *** |
| Depression | 15 | 1.51 (-1) | 1.49-1.53 | *** |
| Sleep-related disorders | | | | |
| Hypersomnia | 18 | 2.34 (-13) | 2.08-2.63 | *** |
| Circadian rhythm disorder | 7 | 1.91 (-2) | 1.61-2.27 | *** |
| Sleep apnea | 17 | 1.58 (-1) | 1.55-1.61 | *** |
| Unspecified sleep disorder | 14 | 1.6 (-1) | 1.56-1.64 | *** |
| Unspecified sleep movement disorder | 13 | 9.06 (-13) | 2.39-34.35 | * |
| REM sleep behavior disorder | 11 | 6.95 (-1) | 6.04-7.98 | *** |
| Restless legs syndrome | 4 | 28.93 (-4) | 3.61-231.52 | * |
| Periodic limb movement disorder | 6 | 1.89 (-1) | 1.71-2.08 | *** |
| Insomnia | 11 | 1.24 (-1) | 1.21-1.26 | *** |

REFERENCES

- 1 Ascherio A, Schwarzschild MA. The epidemiology of Parkinson's disease: risk factors and prevention. *Lancet Neurol* 2016;**15**:1257–72. doi:10.1016/S1474-4422(16)30230-7
- 2 Uryu K, Giasson BI, Longhi L, *et al.* Age-dependent synuclein pathology following traumatic brain injury in mice. *Exp Neurol* 2003;**184**:214–24. doi:10.1016/s0014-4886(03)00245-0
- 3 Uryu K, Chen X-H, Martinez D, *et al.* Multiple proteins implicated in neurodegenerative diseases accumulate in axons after brain trauma in humans. *Exp Neurol* 2007;**208**:185–92. doi:10.1016/j.expneurol.2007.06.018
- 4 Jafari S, Etminan M, Aminzadeh F, *et al.* Head injury and risk of Parkinson disease: A systematic review and meta-analysis. *Mov Disord* 2013;**28**:1222–9. doi:<https://doi.org/10.1002/mds.25458>
- 5 Gardner RC, Byers AL, Barnes DE, *et al.* Mild TBI and risk of Parkinson disease: A Chronic Effects of Neurotrauma Consortium Study. *Neurology* 2018;**90**:e1771–9. doi:10.1212/WNL.0000000000005522
- 6 Yao C, Fereshtehnejad S-M, Keezer MR, *et al.* Risk factors for possible REM sleep behavior disorder: A CLSA population-based cohort study. *Neurology* Published Online First: 26 December 2018. doi:10.1212/WNL.0000000000006849
- 7 Elliott JE, Opel RA, Pleshakov D, *et al.* Posttraumatic stress disorder increases the odds of REM sleep behavior disorder and other parasomnias in Veterans with and without comorbid traumatic brain injury. *Sleep* 2020;**43**. doi:10.1093/sleep/zsz237
- 8 White DL, Kunik ME, Yu H, *et al.* Post-Traumatic Stress Disorder is Associated with further Increased Parkinson's Disease Risk in Veterans with Traumatic Brain Injury. *Ann Neurol* 2020;**88**:33–41. doi:<https://doi.org/10.1002/ana.25726>
- 9 Chan Y-LE, Bai Y-M, Hsu J-W, *et al.* Post-traumatic Stress Disorder and Risk of Parkinson Disease: A Nationwide Longitudinal Study. *Am J Geriatr Psychiatry Off J Am Assoc Geriatr Psychiatry* 2017;**25**:917–23. doi:10.1016/j.jagp.2017.03.012
- 10 Wang L, Tan J, Xie H, *et al.* [A cross-sectional study of neurological disease in the veterans of military communities in Beijing]. *Zhonghua Nei Ke Za Zhi* 2010;**49**:463–8.
- 11 Scott GD, Lim MM, Drake MG, *et al.* Onset of skin, gut, and genitourinary prodromal Parkinson's disease: a study of 1.5 million Veterans. *Mov Disord Off J Mov Disord Soc* In Press.
- 12 Szumski NR, Cheng EM. Optimizing algorithms to identify Parkinson's disease cases within an administrative database. *Mov Disord Off J Mov Disord Soc* 2009;**24**:51–6. doi:10.1002/mds.22283
- 13 Golden SE, Hooker ER, Shull S, *et al.* Validity of Veterans Health Administration structured data to determine accurate smoking status. *Health Informatics J* 2020;**26**:1507–15. doi:10.1177/1460458219882259
- 14 Schrag A, Anastasiou Z, Ambler G, *et al.* Predicting diagnosis of Parkinson's disease: A risk algorithm based on primary care presentations. *Mov Disord Off J Mov Disord Soc* 2019;**34**:480–6. doi:10.1002/mds.27616
- 15 Fereshtehnejad S-M, Yao C, Pelletier A, *et al.* Evolution of prodromal Parkinson's disease and dementia with Lewy bodies: a prospective study. *Brain J Neurol* 2019;**142**:2051–67. doi:10.1093/brain/awz111

- 16 Postuma RB, Gagnon J-F, Pelletier A, *et al.* Prodromal autonomic symptoms and signs in Parkinson's disease and dementia with Lewy bodies. *Mov Disord Off J Mov Disord Soc* 2013;**28**:597–604. doi:10.1002/mds.25445
- 17 Stevenson M, Nunes T, Sanchez J, *et al.* EpiR: An R package for the analysis of epidemiological data. 2013;:9–43.
- 18 Skrdal A. Interaction as departure from additivity in case-control studies: a cautionary note. *Am J Epidemiol* 2003;**158**:251–8. doi:10.1093/aje/kwg113
- 19 Iranzo A, Fairfoul G, Ayudhaya ACN, *et al.* Detection of α -synuclein in CSF by RT-QuIC in patients with isolated rapid-eye-movement sleep behaviour disorder: a longitudinal observational study. *Lancet Neurol* 2021;**20**:203–12. doi:10.1016/S1474-4422(20)30449-X
- 20 Al-Qassabi A, Tsao T-S, Racolta A, *et al.* Immunohistochemical Detection of Synuclein Pathology in Skin in Idiopathic Rapid Eye Movement Sleep Behavior Disorder and Parkinsonism. *Mov Disord Off J Mov Disord Soc* Published Online First: 24 November 2020. doi:10.1002/mds.28399
- 21 Iranzo A, Fernández-Arcos A, Tolosa E, *et al.* Neurodegenerative Disorder Risk in Idiopathic REM Sleep Behavior Disorder: Study in 174 Patients. *PLoS ONE* 2014;**9**. doi:10.1371/journal.pone.0089741
- 22 Al-Qassabi A, Fereshtehnejad S-M, Postuma RB. Sleep Disturbances in the Prodromal Stage of Parkinson Disease. *Curr Treat Options Neurol* 2017;**19**:22. doi:10.1007/s11940-017-0458-1
- 23 Scher AI, Ross GW, Sigurdsson S, *et al.* Midlife migraine and late-life parkinsonism: AGES-Reykjavik Study. *Neurology* 2014;**83**:1246–52. doi:10.1212/WNL.0000000000000840
- 24 Stein MB, Levey DF, Cheng Z, *et al.* Genome-wide association analyses of post-traumatic stress disorder and its symptom subdomains in the Million Veteran Program. *Nat Genet* 2021;**53**:174–84. doi:10.1038/s41588-020-00767-x
- 25 Darweesh SKL, Wolters FJ, Postuma RB, *et al.* Association Between Poor Cognitive Functioning and Risk of Incident Parkinsonism: The Rotterdam Study. *JAMA Neurol* 2017;**74**:1431–8. doi:10.1001/jamaneurol.2017.2248
- 26 Savica R, Rocca WA, Ahlskog JE. When does Parkinson disease start? *Arch Neurol* 2010;**67**:798–801. doi:10.1001/archneurol.2010.135
- 27 Langston JW, Forno LS, Tetrad J, *et al.* Evidence of active nerve cell degeneration in the substantia nigra of humans years after 1-methyl-4-phenyl-1,2,3,6-tetrahydropyridine exposure. *Ann Neurol* 1999;**46**:598–605. doi:10.1002/1531-8249(199910)46:4<598::aid-ana7>3.0.co;2-f
- 28 Harrington KM, Quaden R, Stein MB, *et al.* Validation of an Electronic Medical Record–Based Algorithm for Identifying Posttraumatic Stress Disorder in U.S. Veterans. *J Trauma Stress* 2019;**32**:226–37. doi:10.1002/jts.22399
- 29 Barker-Collo S, Theadom A, Jones K, *et al.* Accuracy of an International Classification of Diseases Code Surveillance System in the Identification of Traumatic Brain Injury. *Neuroepidemiology* 2016;**47**:46–52. doi:10.1159/000448403
- 30 Davis KAS, Sudlow CLM, Hotopf M. Can mental health diagnoses in administrative data be used for research? A systematic review of the accuracy of routinely collected diagnoses. *BMC Psychiatry* 2016;**16**:263. doi:10.1186/s12888-016-0963-x

- 31 Stein MB, Walker JR, Forde DR. Gender differences in susceptibility to posttraumatic stress disorder. *Behav Res Ther* 2000;**38**:619–28. doi:10.1016/s0005-7967(99)00098-4
- 32 Miller IN, Cronin-Golomb A. GENDER DIFFERENCES IN PARKINSON’S DISEASE: CLINICAL CHARACTERISTICS AND COGNITION. *Mov Disord Off J Mov Disord Soc* 2010;**25**:2695–703. doi:10.1002/mds.23388
- 33 Lorentz IT. A survey of headache in Parkinson’s disease. *Cephalalgia Int J Headache* 1989;**9**:83–6. doi:10.1046/j.1468-2982.1989.0902083.x
- 34 Perry DC, Sturm VE, Peterson MJ, *et al.* Association of traumatic brain injury with subsequent neurological and psychiatric disease: a meta-analysis. *J Neurosurg* 2016;**124**:511–26. doi:10.3171/2015.2.JNS14503
- 35 Gao J, Liu R, Zhao E, *et al.* Head injury, potential interaction with genes, and risk for Parkinson’s disease. *Parkinsonism Relat Disord* 2015;**21**:292–6. doi:10.1016/j.parkreldis.2014.12.033
- 36 Taylor KM, Saint-Hilaire M-H, Sudarsky L, *et al.* Head injury at early ages is associated with risk of Parkinson’s disease. *Parkinsonism Relat Disord* 2016;**23**:57–61. doi:10.1016/j.parkreldis.2015.12.005
- 37 Gardner RC, Burke JF, Nettiksimmons J, *et al.* Traumatic brain injury in later life increases risk for Parkinson disease. *Ann Neurol* 2015;**77**:987–95. doi:10.1002/ana.24396
- 38 Heinzel S, Berg D, Gasser T, *et al.* Update of the MDS research criteria for prodromal Parkinson’s disease. *Mov Disord Off J Mov Disord Soc* 2019;**34**:1464–70. doi:10.1002/mds.27802
- 39 Faustino PR, Duarte GS, Chendo I, *et al.* Risk of Developing Parkinson Disease in Bipolar Disorder: A Systematic Review and Meta-analysis. *JAMA Neurol* 2020;**77**:192–8. doi:10.1001/jamaneurol.2019.3446
- 40 Lin C-H, Wu R-M, Chang H-Y, *et al.* Preceding pain symptoms and Parkinson’s disease: a nationwide population-based cohort study. *Eur J Neurol* 2013;**20**:1398–404. doi:https://doi.org/10.1111/ene.12197