

1 **Full title:** *Saliva molecular testing bypassing RNA extraction is suitable for monitoring*
2 *and diagnosing SARS-CoV-2 infection in children*

3

4 **Authors:** Marta Alenquer¹, Tiago Milheiro Silva^{2, §}, Onome Akpogheneta^{3, §}, Filipe
5 Ferreira¹, Sílvia Vale-Costa¹, Mónica Medina-Lopes¹, Frederico Batista⁴, Ana Margarida
6 Garcia², Vasco M. Barreto⁵, Cathy Paulino⁶, João Costa⁶, João Sobral⁶, Maria Diniz-da-
7 Costa⁶, Susana Ladeiro⁶, José Delgado Alves^{4,5}, Ricardo B. Leite⁶, Jocelyne Demengeot³,
8 Maria João Rocha Brito², and Maria João Amorim^{1,*}

9

10 **Affiliations:**

11 ¹ Cell Biology of Viral Infection Lab, Instituto Gulbenkian de Ciência; Oeiras, Portugal

12 ² Pediatric Infectious Disease Unit, Hospital Dona Estefânia, Centro Hospitalar de Lisboa
13 Central; Lisboa, Portugal.

14 ³ Lymphocyte Physiology Lab, Instituto Gulbenkian de Ciência; Oeiras, Portugal.

15 ⁴ Department of Medicine 4, Hospital Prof Doutor Fernando Fonseca; Amadora, Portugal.

16 ⁵ CEDOC NOVA, Centro de Estudos de Doenças Crónicas, Nova Medical School,
17 Universidade Nova de Lisboa; Lisboa, Portugal.

18 ⁶ Genomics Unit, Instituto Gulbenkian de Ciência; Oeiras, Portugal.

19

20 § These authors contributed equally to this work

21 *Corresponding author. Email: mjamorim@igc.gulbenkian.pt

22

23 **Key Points**

24 **Question:** Is saliva reverse transcription-quantitative polymerase chain reaction (RT-qPCR)
25 testing (with and without RNA extraction) suitable to identify SARS-CoV-2 infected young
26 children and can the cycle threshold (CT) be associated with infectivity in a heterogeneous
27 population admitted to hospital for COVID-19-related and unrelated reasons?

28 **Findings:** In this cross-sectional study of 85 children aged 10 years and under, RT-qPCR in
29 saliva samples subjected or not to RNA extraction accurately detected SARS-CoV-2 RNA
30 and infectious viruses could be recovered from CTs below 26.

31 **Meaning:** Saliva sampling coupled to RT-qPCR and specific antibody detection efficiently
32 identifies infants and children infected with SARS-CoV-2. This approach is suitable for
33 surveillance in kindergarten and school settings.

34

35 **Structured abstract**

36 **IMPORTANCE** Adults are being vaccinated against SARS-CoV-2 worldwide, but the
37 longitudinal protection of these vaccines is uncertain, given the ongoing appearance of
38 SARS-CoV-2 variants. Children are susceptible to infection, and some studies reported that
39 they actively transmit the virus even when asymptomatic, thus affecting the community.
40 Methods to easily test infected children and track the virus they carry are in demand.

41 **OBJECTIVE** To determine if saliva is an effective sample for detecting SARS-CoV-2 RNA
42 and antibodies in children aged 10 years and under, and associate viral RNA levels to
43 infectivity.

44 **DESIGN, SETTING, AND PARTICIPANTS** In this cross-sectional study, saliva SARS-
45 CoV-2 RT-qPCR tests, with and without RNA extraction, were validated in 49 hospitalized
46 adults. The test was then applied to 85 children, aged 10 years and under, admitted to the
47 hospital regardless of COVID-19 symptomatology. Amongst 85 children, 29 (63.0%)
48 presented at least one COVID-19 symptom, 46 (54.1%) were positive for SARS-CoV-2
49 infection, 28 (32.9%) were under the age of 1 and the mean (SD) age was 3.8 (3.4) years.
50 Saliva samples were collected up to 48 h after a positive test by nasopharyngeal (NP) swab-
51 RT-qPCR.

52 **EXPOSURE** Infection by SARS-COV-2 in adults up to 8 days post-symptom onset. Children
53 admitted to hospital for any reason and therefore with unclear onset of SARS-CoV-2
54 infection.

55 **MAIN OUTCOMES AND MEASURES** Saliva RT-qPCR up to CT<37 accurately identifies
56 SARS-CoV-2 infected children, with viral infectivity in tissue culture restricted to CT<26.

57 **RESULTS** In adults, the accuracy of the saliva SARS-CoV-2 RT-qPCR test was 98.0% (95%
58 confidence intervals [CI]: 89.3%–100%) as compared to NP-RT-qPCR. In children, the
59 sensitivity, specificity, and accuracy of saliva-RT-qPCR tests compared to NP swab-RT-

60 qPCR were, respectively, 84.8% (71.8%–92.4%), 100% (91.0%–100%), and 91.8% (84.0%–
61 96.6%) with RNA extraction and 81.8% (68.0%–90.5%), 100% (91.0%–100%), and 90.4%
62 (82.1%–95.0%) without RNA extraction. The threshold for rescuing infectious particles from
63 saliva was $CT < 26$. There were significant IgM positive responses to the spike protein and its
64 receptor-binding domain (RBD) among children positive for SARS-CoV-2 by NP swab and
65 negative by saliva compared to other groups, indicating late infection onset (>7–10 days).

66 **CONCLUSIONS AND RELEVANCE** Saliva-molecular testing is suitable in children aged
67 10 years and under, including infants aged <1 year, even bypassing RNA extraction methods.
68 Importantly, the detected viral RNA levels were significantly above the infectivity threshold
69 in several samples. Further investigation is required to understand how SARS-CoV-2 RNA
70 levels correlate with viral transmission.

71

72 **Introduction**

73 The COVID-19 pandemic caused by SARS-CoV-2 has resulted in excess morbidity and
74 mortality worldwide, especially in elderly populations and people with associated specific
75 comorbidities.¹⁻³ Adults and children above 12 years of age are being vaccinated at different
76 paces worldwide,⁴ but younger children will remain more susceptible to infection. How new
77 variants will be transmitted amongst children and affect the community remains unclear. In
78 fact, thus far, the role of children in SARS-CoV-2 transmission remains poorly understood,
79 mostly because the majority of children with SARS-CoV-2 display mild to no symptoms;⁵ it
80 has been estimated that 93% of infected children are not identified by symptom screening.⁶
81 However, it is now well established that children are susceptible to infection,⁷⁻⁹ and a small
82 percentage may develop serious complications,¹⁰ including pneumonia, myocarditis, central
83 nervous system disorders, and multisystem inflammatory syndrome.^{11,12} It is critical in the
84 next phase of the pandemic, to have readily available strategies for minimally-invasive
85 approaches to monitor school settings; these strategies could help establish whether children
86 are prone to evolve new variants and how variants impact viral transmission by children to
87 the community by combining diagnosis with genotyping and epidemiological analyses.
88 Saliva molecular testing has emerged as a suitable alternative to nasopharyngeal (NP) swabs
89 for sampling and identification of SARS-CoV-2 RNA in children and adults, and for
90 genotyping SARS-CoV-2 variants.¹³⁻¹⁵ Compared to NP swabs, saliva testing is less invasive
91 and may be implemented in self-collected or parent-assisted contexts more easily, including
92 the sampling of children up to 1-year-old, by low-pressure aspiration. Saliva RT-qPCR
93 testing is also more sensitive than antigen testing.¹⁶ However, there is still some resistance to
94 using saliva molecular testing partly because it is not a fast test, and it is unclear if the
95 detected viral loads are substantially lower than those detected in fast lateral-flow tests using
96 NP swab samples. In this cross-sectional study, we focused on children aged 10 years and

97 under, admitted to hospital with COVID-19 related symptoms or with unrelated medical
98 pathologies or surgeries, and investigated the potential of saliva for being coupled to RT-PCR
99 testing, with saliva collected up to 48 h from a positive (or control) NP swab. Interestingly,
100 we found non-significant differences between methods using and bypassing RNA extraction.
101 In addition, we associated RNA levels detected in saliva with infectivity and quantified
102 specific SARS-CoV-2 spike and receptor-binding-domain (RBD) antibodies in this type of
103 sample. Interestingly, we only found statistically significant differences in IgM levels in
104 samples positive in swab-molecular testing that were negative by saliva-molecular testing,
105 suggesting that discrepancies between saliva and NP molecular tests are more frequent in
106 children infected for more than 7-10 days, which correlates to loss of infectivity and hence
107 transmission. Our study shows that saliva molecular testing bypassing RNA extraction is an
108 efficient method for monitoring SARS-CoV-2 infected children in age groups up to 10 years-
109 old.

110

111

112 **Methods**

113 **Study design**

114 A total of 49 adults and 85 children (aged 10 years and under) inpatients were enrolled in this
115 study between 25 August 2020 and 20 June 2021. NP swab samples were collected and
116 processed at the hospital. Saliva samples were collected from adults or children, within 24 or
117 48 h from NP swab collection, respectively. Both SARS-CoV-2 positive and negative
118 individuals (by NP swab) were enrolled in this study. In adults, only symptomatic patients
119 were enrolled, whereas, for children, patients were enrolled after admission to the hospital for
120 COVID-19 symptoms or causes non-related to COVID-19 (other medical pathologies or
121 surgeries).

122 This study was approved by the Ethics committees of Centro Hospitalar Universitário de
123 Lisboa Central and Hospital Professor Doutor Fernando Fonseca, in compliance with the
124 Declaration of Helsinki, and follows international and national guidelines for health data
125 protection. All participants, or their guardians, provided informed written consent to take part
126 in the study.

127

128 **Saliva collection**

129 At least 1 mL of saliva was collected with the help of a health care worker, after abstinence
130 from food or water for at least 30 min. Participants were asked to pool saliva in the mouth
131 and gently spit it into a sterile container without coughing or clearing their throats. For
132 children under the age of 1 year, saliva was gently aspirated from the mouth with a suction
133 tube. Samples were stored at 4°C, sent to Instituto Gulbenkian de Ciência, and processed
134 within 72 h from collection.

135

136 **SARS-CoV-2 detection**

137 Saliva was treated with Proteinase K (645 µg/mL in 160 nM SDS) for 30 min at 50°C,
138 followed by heat inactivation for 10 min at 98°C. Saliva specimens with high viscosity were
139 diluted 1:2 in TBE 2x prior to Proteinase K treatment.¹⁷ Samples were then used directly in
140 the RT-qPCR reaction or after RNA extraction with the QIAamp Viral RNA Mini kit
141 (Qiagen, 52906), according to the manufacturer's instructions; 200 µL saliva were extracted
142 and eluted in 50 µL RNase-free water; 1 µL extracted RNA or unextracted saliva were used
143 for RT-qPCR. A one-step assay (cDNA synthesis and amplification) was performed using
144 iTaq Universal Probes One-Step Kit (BioRad, #12013250). A master mix was prepared for
145 each set of primer-probe CDC_N1, CDC_N2 and Hs_RPP30 using: 0.5 nM of each primer
146 pair, 125 nM of probe, 1x iTaq Universal Probes reaction mix, 2.5% (V/V) iScript Reverse
147 Transcriptase and 10% (V/V) RNA or unextracted saliva sample. Two positive controls were
148 performed separately per experiment (SARS-CoV-2 and Human) for N1, N2, and RP primer-
149 probe set using 2,000 synthetic copies of nucleocapsid region of the virus or 2,000 synthetic
150 copies of the Human single copy RPP30 gene. One negative control was performed without
151 template for the same three conditions (N1, N2 and RP). All the primers and probes (2019-
152 nCoV RUO Kit, 500 rxn, #10006713) were purchased from Integrated DNA Technologies, as
153 well as the positive virus detection control (2019-nCoV_N_Positive Control, #10006625) and
154 positive human sample control (Hs_RPP30 Positive Control, #10006626). Reactions were
155 performed in 384 wells plates (ThermoFisher, #TF-0384) in a QuantStudio 7 Flex system
156 (Applied Biosciences), using the fast mode, consisting of a hold stage at 50°C for 10 min, and
157 95°C for 3 min, followed by 45 cycles of a PCR stage at 95°C for 10 sec then 60°C for 30 sec
158 (FAM signal acquisition step). Positive cases were considered when the two probes were
159 amplified with a CT below 37. Negative detection was established as having no amplification
160 or amplification of one probe above 37. Inconclusive results were considered, with only one
161 probe being amplified with a CT less than 37. The limit of detection (LOD) of the saliva

162 assay was performed by serial dilution of IDT synthetic copies (20,000 to 20) of SARS-CoV-
163 2 in fresh saliva samples (non-positives) (eFigure 1).

164

165 Infectious SARS-CoV-2 growth from saliva

166 Saliva samples were diluted 1:4 in virus growth medium (Dulbecco's Modified Eagle
167 Medium [DMEM, Gibco, #21969035] supplemented with 2% fetal bovine serum [FBS,
168 Gibco, #10500064], 2 mM L-glutamine [ThermoFisher, #25030024], 1%
169 penicillin/streptomycin solution [Biowest, #L0022] and 2.5 µg/mL Amphotericin B [Gibco,
170 #15290018]), vortexed, briefly centrifuged to collect debris and passed through a 40 µm
171 filter. Two hundred µL of each sample were added in triplicate to Vero E6 cells (a kind gift
172 from Rupert Beale, The Francis Crick Institute, UK) pre-seeded in 24 well plates with
173 coverslips and centrifuged for 15 min at 3,500 g, 37°C. After centrifugation, the inoculum
174 was removed and 250 µL of fresh virus growth media were added to the cells (protocol
175 adapted from ¹⁸). As a positive control, cells were infected with SARS-CoV-2 viral stock
176 (strain human/DEU/HH-1/2020 from the European Virus Archive Global) at a multiplicity of
177 infection (MOI) of 0.01. Cells were inspected daily for cytopathic effect (CPE) and
178 considered negative if no CPE was visible for 7 days. At 1- and 4-days post-infection, a
179 replicate was fixed with 4% formaldehyde and processed for immunofluorescence, as
180 described in ¹⁹. Cells were stained with a rabbit polyclonal SARS-CoV-2 nucleocapsid
181 antibody (1:1,000; ThermoFisher, #MA536270) and an anti-rabbit IgG Alexa-Fluor 488
182 secondary antibody (1:1,000; Invitrogen, #A-21206). Cell nuclei were stained with Hoechst
183 33342 (1 µg/mL, Invitrogen, #H3570). Single optical sections were imaged with a Leica SP5
184 confocal microscope.

185

186 ELISA

187 The ELISA assay used to quantify saliva IgG, IgA, and IgM anti-full-length SARS-CoV-2
188 spike and its receptor-binding domain (RBD) was adapted from ²⁰ as described in ^{21,22}, with
189 few modifications described here. Briefly, high binding 96-well plates (Maxisorb) were
190 coated with either RBD or spike as capture antigen at 0.5 µg/mL stored overnight at 4°C.
191 Plates were blocked with PBS supplemented with 2% BSA (PBS-BSA) for 1–4 hours at
192 room temperature. Saliva samples were tested at 1 in 25 dilutions in PBS with 2% BSA and
193 0.1% Tween (PBS-BSA-T), in duplicate. For each isotype test plate, an IgG, IgM (GenScript
194 [clone 2001]) or IgA (Absolute Antibody [clone 3022]) SARS-CoV-2 reactive monoclonal
195 antibody was used to generate a concentration curve upon serial dilution and validate each
196 plate assayed. Duplicate measurements of reference positive and negative sera samples were
197 used at 1 in 50 dilutions in PBS-BSA-T to validate each plate assayed; negative sera were
198 used to determine cutoff values.

199 Samples and monoclonal antibodies were incubated for 2 hours at 37°C, then plates were
200 washed 3x in PBS-T. Secondary antibody goat anti-Human Fc-HRP IgG, IgA or IgM
201 (Abcam) diluted 1 in 25,000 in PBS-BSA-T was added to respective isotype plates and
202 incubated for 1 hour at 37°C to reveal bound IgG, IgA or IgM. Plates were then washed 3x in
203 PBS-T and incubated with 3,3',5,5'-tetramethylbenzidine (BD OptEIA™, BD Biosciences)
204 for 20 to 30 minutes at 37°C. The reaction was stopped with sulphuric acid, and the
205 colorimetric assay was read to provide optical density (OD) at 450 nm.

206 Reference negative sera were collected at least 3 years before the COVID-19 pandemic and
207 used as pooled serum from 50 samples. Isotype-specific positive and negative thresholds
208 were determined for each assay plate from the mean negative serum value plus two standard
209 deviations (SD). Negative sera were obtained upon informed consent in the frame of the
210 projects “Genetic susceptibility factors and immunologic protection in COVID-19” and

211 “Genetic variance in Portuguese population: candidate genes in COVID-19”, both approved
212 by the IGC Ethics Committee (reference H004.2020 and H002.2020, respectively).

213

214 Statistical analysis

215 The values of sensitivity, specificity, and accuracy were estimated using the results of the NP
216 swab as the reference standard. 95% confidence intervals (CI) were calculated using the
217 Wilson method, recommended for small sample sizes.²³ The analytical sensitivity of SARS-
218 CoV-2 RNA detection between saliva and nasopharyngeal swabs from SARS-CoV-2 positive
219 adults and children was compared using a Wilcoxon matched-pairs signed-rank test, in
220 GraphPad Prism 9.1.2.

221 ELISA data were cleaned, and categorical variables were created where needed. Thresholds
222 for antibody-positive responses were defined by the negative pool (mean + 2 SD). The
223 correlation between antibody OD values and age was assessed using Pearson’s Pairwise
224 coefficients. Descriptive statistics were assessed as frequencies and percentages (n [%]) for
225 categorical variables; crude associations were tested with Pearson’s Chi2 tests. Significance
226 level was set at <0.05. STATA (StataCorp LLC, USA, V16) was used for all analyses.

227

228 **Results**

229 **Method validation in adults**

230 We first validated our method with adult patients admitted to Hospital Fernando Fonseca
231 with COVID-19, or without SARS-CoV-2 infection, as negative controls. Once SARS-CoV-
232 2 infection was assessed by RT-qPCR on RNA extracted from a nasopharyngeal (NP) swab,
233 a saliva sample was collected within the following 48 hours. Saliva specimens were pre-
234 treated with proteinase K, RNA was extracted and subjected to RT-qPCR using the primer
235 and probe sequences from the Center for Disease Control and Prevention.²⁴ Alternatively,
236 saliva samples treated with proteinase K were used directly for the RT-qPCR reaction,
237 without RNA extraction.

238 The overall concordances of saliva and NP swab were 98.0% (48/49) and 97.8% (46/47),
239 with and without RNA extraction from saliva, respectively (Table 1). Of the patients with a
240 positive NP swab, 100% were also positive in saliva, either with (36/36) or without (34/34)
241 RNA extraction. The differences in CT values between saliva (with or without RNA
242 extraction) and NP swab were not statistically significant (Figure 1A), but CT values in saliva
243 with vs. without RNA extraction are statistically different, with extraction of RNA
244 consistently decreasing the CT values obtained.

245 Next, we analyzed the stability of saliva samples for stored 3 days at 4°C or 7 days at -20°C
246 prior to processing (Figure 1B). We detected viral RNA in all saliva samples kept at 4°C and
247 -20°C, regardless of RNA extraction, demonstrating they are stable under the conditions
248 studied.

249

250 **Performance of the method in pediatric patients**

251 Eighty-five patients aged 10 years and under admitted to Hospital Dona Estefânia between
252 August 2020 and June 2021 were included in our analysis. The clinical characteristics of the

253 participants are shown in Table 2. Forty-six (54.1%) were positive for SARS-CoV-2 infection
254 and, within these, 29 (63.0%) presented at least one COVID-19 symptom, the most common
255 being fever (50.0%), cough (28.0%), and coryza (28.0%). The remaining 17 children (37.0%)
256 were diagnosed on routine tests prior to hospital admission for causes non-related to COVID-
257 19. Twenty-eight (32.9%) participants were under the age of 1 and the mean (SD) age was
258 3.8 (3.4) years.

259 Upon hospital admission, SARS-CoV-2 infection was assessed by RT-qPCR quantification
260 of RNA load in NP swab samples. Saliva samples were collected within the following 48
261 hours and processed as described above. The overall concordances of saliva and NP swab
262 were 91.8% (78/85) with RNA extraction and 90.4% (75/83) without RNA extraction from
263 saliva (Table 1). Of the children with a positive NP swab, 84.8% were positive in saliva after
264 RNA extraction (39/46) and 81.1% (36/44) were positive in saliva without RNA extraction.
265 The specificity of the method was 100%, with the 39 patients negative by NP swab, also
266 negative in saliva, with and without RNA extraction. When restricting the analysis to children
267 younger than 1-year-old, the sensitivity of the method increases to 87.0% (25/28) with RNA
268 extraction and 86.4% (19/27) without RNA extraction from saliva (Table 1).

269 The CT values in the saliva of children were significantly different from those in NP swab
270 (Figure 2A), with a mean CT (SD) of 22.9 (6.2) in NP swab versus 26.1 (5.1) in saliva with
271 RNA extraction and 27.9 (4.7) without extraction. It is important to notice that there was a
272 time interval between NP swab and saliva collection that could go up to 48 h and, therefore,
273 these differences may not reflect a lower sensitivity of our method but rather a decrease in the
274 patient viral load. Importantly, there was no correlation between detection of SARS-CoV-2 in
275 saliva and the CT value of the NP swab, or the age of the patient (Figure 2B).

276 We also analyzed the stability of saliva samples from children when stored for 3 days at 4°C
277 or 7 days at -20°C prior to processing (Figure 2C). As for adults, saliva samples from children

278 were stable under the conditions tested, since viral RNA was detectable in all samples,
279 irrespective of whether RNA extraction was performed.

280 Finally, we tested saliva samples on a commercial lateral-flow test (COVID19 antigen rapid
281 test, ALL TEST, #ICOV-502). Saliva samples that tested positive in our molecular assay with
282 $CT < 26$ also tested positive in the chosen lateral-flow assay (eFigure 2). Of note, two other
283 commercial lateral-flow tests performed poorly in our hands. These data are consistent with
284 what was observed for NP swabs¹⁶ and may have direct implications for monitoring schools.

285

286 Viral growth from saliva samples

287 To address if we could detect infectious SARS-CoV-2 viruses in children saliva and correlate
288 viral replication with their CT value, saliva samples were cultured in Vero cells, inspected
289 daily for CPE, and analyzed by immunofluorescence using an antibody against SARS-CoV-2
290 nucleoprotein (Figure 2D). Importantly, we recovered infectious viruses from all saliva
291 samples with CT values ≤ 25.6 , whereas in saliva samples with higher CT values or negative,
292 no viral replication was detected. These results suggest that children with CT values in saliva
293 equal or higher than 26 may not be able to shed infectious viruses.

294

295 Antibodies against SARS-CoV-2 in saliva

296 To address the levels of anti-SARS-CoV-2 IgG, IgA and IgM antibodies in the saliva of
297 adults and children, we performed ELISA assays against full-length spike and spike's RBD
298 (Figure 2F and Table 3). In adults, all saliva samples (n=21) tested negative for IgG
299 reactivities. In contrast, reactive IgA was detected in 16 (76.2%) adults, regardless of NP
300 swab and saliva results, suggesting that the detection of IgA antibodies does not correlate
301 with infection. This discrepancy could, however, be explained by the presence of secreted

302 IgAs (sIgAs) that recognize glycosylation patterns existent in spike.^{25,26} Only one (4.8%)
303 participant was positive for reactive IgM.

304 Of the 73 saliva samples from children tested by ELISA, 3 (3.1%) were positive for specific
305 IgG. Reactive IgA and IgM were detected in 44 (60.3%) and 5 (11.1%) participants,
306 respectively. Four participants with discrepant NP vs. saliva RT-qPCR data (NP positive,
307 saliva negative, n=12) presented IgM, suggesting that the corresponding samples were
308 collected after the first immune response, estimated to be 7-10 days post-infection, and
309 therefore after the peak of viral loads.

310 For children up to 10 years, IgG OD responses increased significantly ($p < 0.05$) with age for
311 spike, while IgA OD responses to spike and RBD presented a marginally significant ($p < 0.1$)
312 increase with age (Figure 2F).

313

314

315 **Discussion**

316 The infection of SARS-CoV-2 in children remains under-diagnosed and poorly understood.
317 In particular, the role of children in viral transmission remains unclear, especially with the
318 emerging variants that increase viral transmission, such as the delta variant. In our work, we
319 corroborate findings that saliva molecular testing by methods similar to those described
320 previously¹⁵ efficiently detects infected children, even in children unable to donate saliva
321 (Figure 2A), for whom saliva was gently aspirated. Importantly, in children, the sensitivity,
322 specificity, and accuracy of saliva-RT-qPCR tests compared to NP swab-RT-qPCR were
323 respectively 84.8% (71.8%–92.4%), 100% (91.0%–100%), and 91.8% (84.0%–96.6%) with
324 RNA extraction and 81.8% (68.0%–90.5%), 100% (91.0%–100%), and 90.4% (82.1%–
325 95.0%) without RNA extraction. Hence, we show that methods bypassing RNA extraction
326 have a sensitivity of 97.3% (36/37) compared with assays extracting RNA, and 100% (36/36)
327 sensitivity considering CTs up to 36 with RNA extraction. We observed that discrepancies
328 between saliva and NP swab-based molecular tests were found in children with specific IgM
329 responses, which could suggest lower viral loads and prolonged infection. Interestingly, our
330 study detected a high proportion of uninfected children with IgA antibodies in saliva.
331 Antibodies in saliva may be acquired from the blood via the gingival crevicular fluid.²⁷
332 However, there is a portion of IgAs that are produced locally in mucosal tissues, such as
333 salivary glands, including secretory IgA (sIgA).²⁵ While some sIgA antibodies undergo
334 affinity maturation, others recognize specific glycosylation patterns²⁶ and could justify the
335 high levels detected in negative patients. This cross-reactive response has been reported by
336 others in the mucosal tissue^{28,29} and is considered an important property of sIgAs for
337 protecting the mucosal tissue against infections.

338 In addition, our study shows that SARS-CoV-2 infectious viruses may be rescued from saliva
339 samples with CTs lower than 26 (Figure 2D, E). Data suggest that high viral loads are prone

340 to result in viral transmission.¹⁸ In our study, SARS-CoV-2 viral growth was not associated
341 with symptoms in children, but the sample size used was too low to draw conclusions
342 regarding how symptoms relate to viral loads. In fact, it has been shown that asymptomatic
343 children have significantly lower viral loads than symptomatic children.⁷ Overall, it is well-
344 established that infected children are more likely to remain asymptomatic or have milder
345 disease than adults; children are rarely hospitalized and rarely have fatal outcomes.^{1,6,9,10,30}
346 However, data accumulated from 22 centers throughout South Korea has shown that 58% of
347 symptomatic infected children experienced symptoms 3 days (median, in a range of 1-28
348 days) before SARS-CoV-2-positive diagnostic and that, despite having a detectable virus
349 load, pre-symptomatic children remained symptom-free for 2.5 days (median, in a range of 1-
350 25 days).⁶ For these reasons, the vast majority of SARS-CoV-2 infected children will
351 continue to be missed by a symptom-based testing approach.⁶ With the unprecedented effort
352 of vaccinating the world population above 12-years-old, it is critical to understand how
353 children below 12-years-old contribute to viral circulation within their community. To this
354 need, it is essential to implement efficient, easy, non-invasive, cheap methods for accurately
355 identifying and tracking infected children, for which our method offers a solution. It is also
356 critical to establish if children are a potential source for emerging novel SARS-CoV-2
357 variants, and saliva is suitable for collecting SARS-CoV-2 for genotyping¹³⁻¹⁵ and detecting
358 antibodies specific to spike and RBD as we show here (Figure 2F and Table 3). How
359 infection in children will impact breakthrough infections upon vaccination, which has been
360 demonstrated as possible,³¹ remains to be elucidated and is of the utmost importance. Overall,
361 our study provides a method highly suitable to identify children positive for SARS-CoV-2. It
362 could be used for the surveillance of kindergartens and schools, and also as the first step in
363 genotyping efforts to monitor known variants and spot novel ones when coupled to CRISPR-
364 based methodologies.³²

366 **Limitations**

367 This cross-sectional study has one key limitation. There was an interval of up to 48 hours
368 between SARS-CoV-2 infection diagnostic in children by NP swab and the collection of a
369 saliva sample. Given this time interval, it remains unclear whether the saliva molecular
370 testing has a lower sensitivity than the NP test, or whether there was a real decrease in the
371 patient viral load between the two samples collection. In support of the former scenario, other
372 studies conducted in adults reported a small detection decrease in saliva relative to NP
373 swabs.^{15,33-37} Despite the temporal limitation, our saliva testing in children up to 10-years-old
374 indicates a high sensitivity, specificity, and accuracy with and without RNA extraction,
375 showing that the method is suitable for detecting infected children. An important note is that
376 children were admitted to hospital for many reasons other than COVID-19 related symptoms
377 and hence this study is suitable to draw conclusions for children regardless of their
378 symptoms. A second limitation of this study is that the number of samples from which we
379 rescued infective viral particles in cultured cells does not allow a suitable statistical analysis
380 to relate viral loads with symptoms and is not a formal demonstration of transmission from
381 children. A third caveat is that the ELISA assay, despite being specific for sera and collected
382 from infected people,²¹ was not established for saliva. In fact, we did not calibrate the ELISA
383 with pre-pandemic saliva, and as children were not re-analyzed posteriorly for antibody
384 development, there is a lack of saliva positive and negative controls, which also limits the
385 conclusions we may draw from the data.

386

387

388 **References**

- 389 1. Guan WJ, Ni ZY, Hu Y, et al. Clinical Characteristics of Coronavirus Disease 2019 in
390 China. *N Engl J Med.* 2020;382(18):1708-1720.
- 391 2. Yang J, Zheng Y, Gou X, et al. Prevalence of comorbidities and its effects in patients
392 infected with SARS-CoV-2: a systematic review and meta-analysis. *Int J Infect Dis.*
393 2020;94:91-95.
- 394 3. Wang D, Hu B, Hu C, et al. Clinical Characteristics of 138 Hospitalized Patients With
395 2019 Novel Coronavirus-Infected Pneumonia in Wuhan, China. *JAMA.*
396 2020;323(11):1061-1069.
- 397 4. Ledford H. Should children get COVID vaccines? What the science says. *Nature.*
398 2021;595:638-639
- 399 5. Jones TC, Biele G, Muhlemann B, et al. Estimating infectiousness throughout SARS-
400 CoV-2 infection course. *Science.* 2021;373(6551).
- 401 6. Han MS, Choi EH, Chang SH, et al. Clinical Characteristics and Viral RNA Detection in
402 Children With Coronavirus Disease 2019 in the Republic of Korea. *JAMA Pediatr.*
403 2021;175(1):73-80.
- 404 7. Kam KQ, Thoon KC, Maiwald M, et al. SARS-CoV-2 viral RNA load dynamics in the
405 nasopharynx of infected children. *Epidemiol Infect.* 2021;149:e18.
- 406 8. Jones TC, Mühlemann B, Hofmann J, et al. An analysis of SARS-CoV-2 viral load by
407 patient age. 2020.
- 408 9. Lu X, Zhang L, Du H, et al. SARS-CoV-2 Infection in Children. *N Engl J Med.*
409 2020;382(17):1663-1665.
- 410 10. Chao JY, Derespina KR, Herold BC, et al. Clinical Characteristics and Outcomes of
411 Hospitalized and Critically Ill Children and Adolescents with Coronavirus Disease 2019
412 at a Tertiary Care Medical Center in New York City. *J Pediatr.* 2020;223:14-19 e12.

- 413 11. Mardi P, Esmaeili M, Iravani P, Abdar ME, Pourrostami K, Qorbani M. Characteristics
414 of Children With Kawasaki Disease-Like Signs in COVID-19 Pandemic: A Systematic
415 Review. *Front Pediatr.* 2021;9:625377.
- 416 12. Ebina-Shibuya R, Namkoong H, Shibuya Y, Horita N. Multisystem Inflammatory
417 Syndrome in Children (MIS-C) with COVID-19: Insights from simultaneous familial
418 Kawasaki Disease cases. *Int J Infect Dis.* 2020;97:371-373.
- 419 13. Carmagnola D, Pellegrini G, Canciani E, et al. Saliva Molecular Testing for SARS-CoV-
420 2 Surveillance in Two Italian Primary Schools. *Children (Basel).* 2021;8(7).
- 421 14. Jayamohan H, Lambert CJ, Sant HJ, et al. SARS-CoV-2 pandemic: a review of
422 molecular diagnostic tools including sample collection and commercial response with
423 associated advantages and limitations. *Anal Bioanal Chem.* 2021;413(1):49-71.
- 424 15. Wyllie AL, Fournier J, Casanovas-Massana A, et al. Saliva is more sensitive for SARS-
425 CoV-2 detection in COVID-19 patients than nasopharyngeal swabs. *medRxiv.*
426 2020;<https://doi.org/10.1101/2020.04.16.20067835>
- 427 16. Schildgen V, Demuth S, Lusebrink J, Schildgen O. Limits and Opportunities of SARS-
428 CoV-2 Antigen Rapid Tests: An Experienced-Based Perspective. *Pathogens.* 2021;10(1).
- 429 17. Ranoa DRE, Holland RL, Alnaji FG, et al. Saliva-Based Molecular Testing for SARS-
430 CoV-2 that Bypasses RNA Extraction. *bioRxiv.*
431 2020;<https://doi.org/10.1101/2020.06.18.159434> .
- 432 18. van Kampen JJA, van de Vijver D, Fraaij PLA, et al. Duration and key determinants of
433 infectious virus shedding in hospitalized patients with coronavirus disease-2019
434 (COVID-19). *Nat Commun.* 2021;12(1):267.
- 435 19. Vale-Costa S, Alenquer M, Sousa AL, et al. Influenza A virus ribonucleoproteins
436 modulate host recycling by competing with Rab11 effectors. *J Cell Sci.*
437 2016;129(8):1697-1710.

- 438 20. Stadlbauer D, Amanat F, Chromikova V, et al. SARS-CoV-2 Seroconversion in Humans:
439 A Detailed Protocol for a Serological Assay, Antigen Production, and Test Setup. *Curr*
440 *Protoc Microbiol.* 2020;57(1):e100-e100.
- 441 21. Alenquer M, Ferreira F, Lousa D, et al. Amino acids 484 and 494 of SARS-CoV-2 spike
442 are hotspots of immune evasion affecting antibody but not ACE2 binding. *bioRxiv.*
443 2021:2021.2004.2022.441007.
- 444 22. Viana JF, Bergman M-L, Gonçalves LA, et al. Population homogeneity for the antibody
445 response to COVID-19 BNT162b2 / Comirnaty vaccine is only reached after the second
446 dose, across all adult age ranges. *MedRxiv.* 2021;2021.03.19.21253680.
- 447 23. Newcombe RG. Improved confidence intervals for the difference between binomial
448 proportions based on paired data. *Stat Med.* 1998;17(22):2635-2650.
- 449 24. Centers for Disease Control and Prevention USDoHaHS. Research Use Only 2019-
450 Novel Coronavirus (2019-nCoV) Real-time RT-PCR Primers and Probes. 2020.
- 451 25. Stadtmueller BM, Huey-Tubman KE, Lopez CJ, Yang Z, Hubbell WL, Bjorkman PJ.
452 The structure and dynamics of secretory component and its interactions with polymeric
453 immunoglobulins. *Elife.* 2016;5.
- 454 26. Gonçalves J, Juliano AM, Charepe N, et al. Non-neutralizing secretory IgA and T cells
455 targeting SARS-CoV-2 spike protein are transferred to the breastmilk upon BNT162b2
456 vaccination. *medRxiv.* 2021:2021.2005.2003.21256416.
- 457 27. Ebersole JL. Humoral immune responses in gingival crevice fluid: local and systemic
458 implications. *Periodontol 2000.* 2003;31:135-166.
- 459 28. Woof JM, Mestecky J. Mucosal immunoglobulins. *Immunological Reviews.*
460 2005;206(1):64-82.
- 461 29. Brandtzaeg P. Induction of secretory immunity and memory at mucosal surfaces.
462 *Vaccine.* 2007;25(30):5467-5484.

- 463 30. Hoang A, Chorath K, Moreira A, et al. COVID-19 in 7780 pediatric patients: A
464 systematic review. *EClinicalMedicine*. 2020.
- 465 31. Hacısuleyman E, Hale C, Saito Y, et al. Vaccine Breakthrough Infections with SARS-
466 CoV-2 Variants. *N Engl J Med*. 2021;384(23):2212-2218.
- 467 32. de Puig H, Lee RA, Najjar D, et al. Minimally instrumented SHERLOCK
468 (miSHERLOCK) for CRISPR-based point-of-care diagnosis of SARS-CoV-2 and
469 emerging variants. *Science Advances*. 2021;7(32):eabh2944.
- 470 33. Chua GT, Wong JSC, To KKW, et al. Saliva viral load better correlates with clinical and
471 immunological profiles in children with coronavirus disease 2019. *Emerg Microbes*
472 *Infect*. 2021;10(1):235-241.
- 473 34. Khurshid Z, Zohaib S, Joshi C, Moin SF, Zafar MS, Speicher DJ. Saliva as a non-
474 invasive sample for the detection of SARS-CoV-2: a systematic review. 2020.
- 475 35. Moreno-Contreras J, Espinoza MA, Sandoval-Jaime C, et al. Saliva sampling is an
476 excellent option to increase the number of SARS CoV2 diagnostic tests in settings with
477 supply shortages. *bioRxiv*. 2020;<https://doi.org/10.1101/2020.06.24.170324>
- 478 36. Xu R, Cui B, Duan X, Zhang P, Zhou X, Yuan Q. Saliva: potential diagnostic value and
479 transmission of 2019-nCoV. *Int J Oral Sci*. 2020;12(1):11.
- 480 37. Yee R, Truong TT, Pannaraj PS, et al. Saliva Is a Promising Alternative Specimen for
481 the Detection of SARS-CoV-2 in Children and Adults. *Journal of Clinical Microbiology*.
482 2021;59(2):e02686-02620.

483

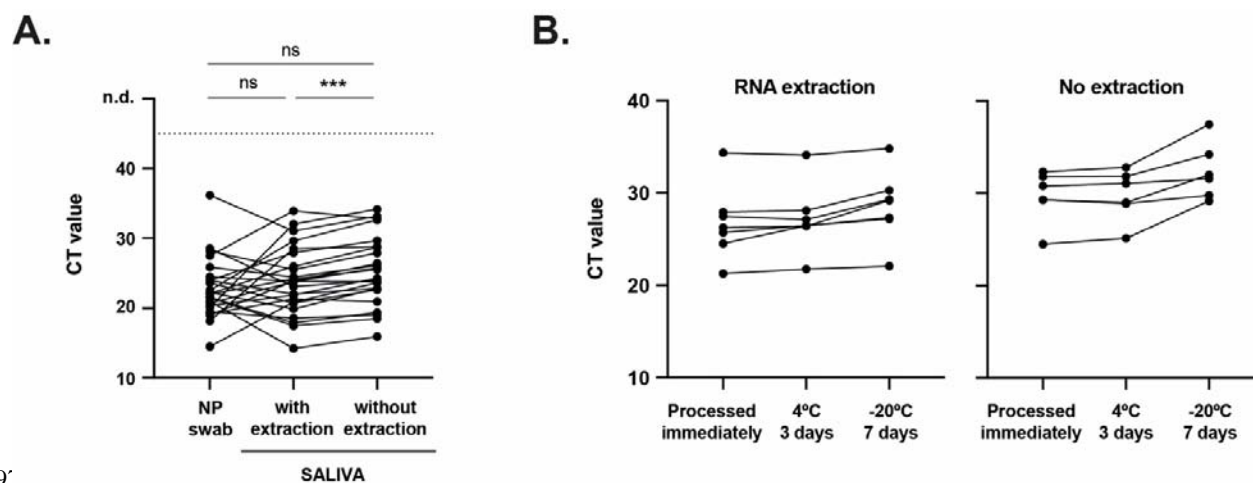
484

485

486 **Acknowledgements**

487 This publication was supported by the European Virus Archive Global (EVA-GLOBAL)
488 project that has received funding from the European Union's Horizon 2020 research and
489 innovation program under grant agreement No 871029. It was funded by the Fundação para a
490 Ciência and Tecnologia (FCT, Portugal) under RESEARCH4COVID 19 call with reference
491 283_596885654 and co-funded by ANI under INOV4COVID (Funding to V.M.B.). M.J.A. is
492 funded by the FCT (CEECIND/02373/2020). M.A. is funded by a Junior Researcher working
493 contract from FCT and Instituto Gulbenkian de Ciência (IGC, Portugal). This work benefited
494 from COVID19 emergency funds 2020 from Calouste Gulbenkian Foundation and from
495 Oeiras city council.

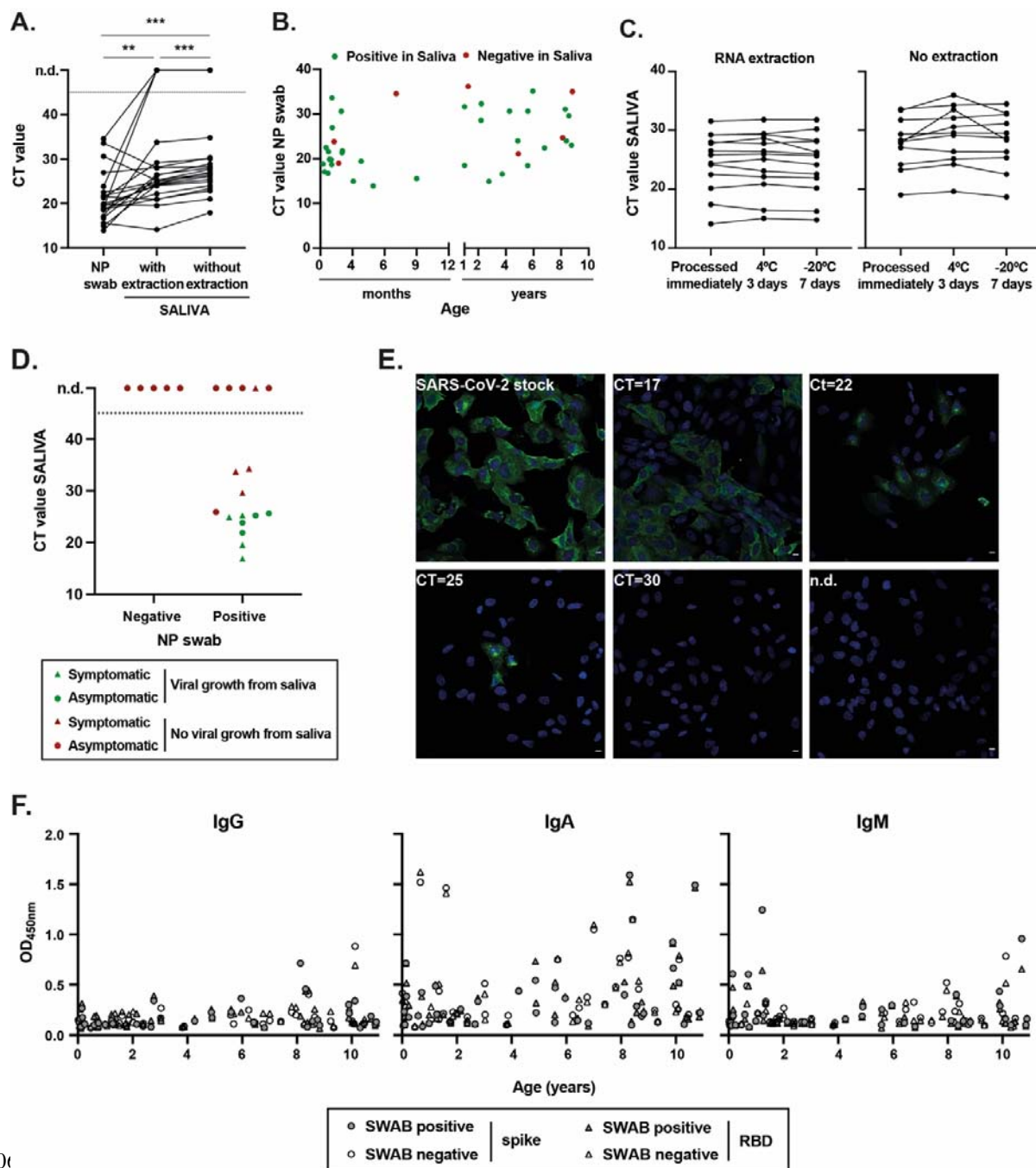
496 **Figures**



497

498 **Figure 1. SARS-CoV-2 RNA detection in NP swab and saliva samples from adult**
499 **patients infected with SARS-CoV-2.** (A) Comparison of CT values from paired saliva (with
500 and without RNA extraction) and NP swab specimens. Each line corresponds to a paired
501 specimen. n.d., not detected. ns, not significant; ***p<0.001, by Wilcoxon matched-pairs
502 signed-rank test. (B) Saliva stability at 4°C and -20°C: comparison of CT values from paired
503 saliva samples (with and without RNA extraction) processed immediately, after 3 days at 4°C
504 or 7 days at -20°C.

505



506

507 **Figure 2. Detection of SARS-CoV-2 infection in NP swab and saliva samples from**
 508 **children.** (A) Comparison of CT values from paired saliva (with and without RNA
 509 extraction) and NP swab specimens from children aged 10 years and under, positive for
 510 SARS-CoV-2 infection. Each line corresponds to a paired specimen. n.d., not detected. Each
 511 line corresponds to a paired specimen. n.d., not detected; **p<0.01, ***p<0.001, by

512 Wilcoxon matched-pairs signed-rank test. (B) Graphical representation of CT values in NP
513 swabs from infected children vs. age. Positive in saliva, green dots; negative in saliva, red
514 dots. (C) Saliva stability at 4°C and -20°C: comparison of CT values from paired saliva
515 samples (with and without RNA extraction) processed immediately, after 3 days at 4°C or 7
516 days at -20°C. (D, E) Infectious SARS-CoV-2 growth from saliva samples. Vero E6 cells
517 were inoculated with saliva samples from children and inspected daily for the presence of a
518 cytopathic effect. As a positive control, cells were infected with SARS-CoV-2 viral stock at
519 an MOI of 0.01. (D) Graphical representation of CT values in saliva vs. NP swab result, with
520 dots representing symptomatic children, triangles asymptomatic patients, green color
521 indicating samples where viral replication was detected, and red color samples without viral
522 growth. n.d., non-detected. (E) At 24h post-infection, cells were fixed with 4% formaldehyde,
523 permeabilized with 0.2% Triton X100, and stained with SARS-CoV-2 Nucleocapsid antibody
524 (green). Cell nuclei were stained with Hoechst (blue). White bar=10µm. Images were
525 acquired with a Leica SP5 confocal microscope. Representative images from Vero cells
526 infected with SARS-CoV-2 viral stock or inoculated with saliva specimens with CT values of
527 17, 22, 25, and 30, or saliva with non-detected SARS-CoV-2 (n.d.). (F) Levels of IgG, IgA,
528 and IgM against full-length spike and spike's RBD measured in the saliva of children aged 10
529 years and under, measured by ELISA.

530

531 **Tables**

532 **Table 1.** Performance of saliva in adults and children. Summary of results obtained from
 533 parallel testing of swab and saliva with and without extraction of RNA.

NP swab No.	Saliva No.					
	with RNA extraction			without RNA extraction		
	Positive	Negative	Total	Positive	Negative	Total
Adults > 18y						
Positive	36	0	36	34	0	34
Negative	1	12	13	1	12	13
Total	37	12	49	35	12	47
Sensitivity (95%CI)	100% (90.4%–100%)			100% (89.8%–100%)		
Specificity (95%CI)	92.3% (66.7%–98.6%)			92.3% (66.7%–98.6%)		
Accuracy (95%CI)	98.0% (89.3%–99.6%)			97.9% (88.9%–99.6%)		
Children < 10y						
Positive	39	7	46	36	8	44
Negative	0	39	39	0	39	39
Total	39	46	85	36	47	83
Sensitivity (95%CI)	84.8% (71.8%–92.4%)			81.8% (68.0%–90.5%)		
Specificity (95%CI)	100% (91.0%–100%)			100% (91.0%–100%)		
Accuracy (95%CI)	91.8% (84.0%–96.6%)			90.4% (82.1%–95.0%)		
Children < 1y						
Positive	20	3	23	19	3	22
Negative	0	5	5	0	5	5
Total	20	8	28	19	8	27
Sensitivity (95%CI)	87.0% (67.9%–95.5%)			86.4% (66.7%–95.3%)		
Specificity (95%CI)	100% (56.6%–100%)			100% (56.6%–100%)		
Accuracy (95%CI)	89.3% (72.8%–96.3%)			88.9% (71.9%–96.1%)		

534
 535
 536

537 **Table 2.** Characteristics and reported signs and symptoms of SARS-CoV-2-positive and
 538 negative children included in this study.

Characteristic	No. (%)		
	Total sample	Negative	Positive
Total	85	39 (45.9)	46 (54.1)
Sex			
Female	39 (45.9)	20 (51.3)	19 (41.3)
Male	46 (54.1)	19 (48.7)	27 (58.7)
Age (y)			
<1	28 (32.9)	5 (12.8)	23 (50)
1–5	25 (29.4)	15 (38.5)	10 (21.7)
6–10	32 (37.7)	19 (48.7)	13 (28.3)
COVID-19 sign or symptom			
None	17 (37.0)	NA	17 (37.0)
Fever	23 (50.0)	NA	23 (50.0)
Cough	13 (28.3)	NA	13 (28.3)
Dyspnea	5 (10.9)	NA	5 (10.9)
Coryza	13 (28.3)	NA	13 (28.3)
Odynophagia	4 (8.7)	NA	4 (8.7)
Headache	1 (2.2)	NA	1 (2.2)
Abdominal pain	1 (2.2)	NA	1 (2.2)
Nausea/Vomit	3 (6.5)	NA	3 (6.5)
Diarrhea	3 (6.5)	NA	3 (6.5)
Concurrent conditions			
0	11 (12.9)	1	10
1	69 (81.2)	35	34
>1	5 (5.9)	3	2
Another Infection	12 (14.1)	1	11
Cardiovascular disease	5 (5.9)	0	5 (10.9)
Urinary tract disease	13 (15.3)	6	7
Digestive tract disease	10 (11.8)	5	5
Another respiratory disease	5 (5.9)	0	5
Oral surgery	4 (4.7)	4	0
Facial congenital anomalies	3 (3.5)	3	0

539
 540
 541

542 **Table 3.** Patients with antibodies in saliva against full-length spike or RBD, divided by age
 543 category and by RT-qPCR result on swab and saliva.

Group	Total sample No.	Positive No. (%)					
		Spike			RBD		
		IgG	IgA	IgM	IgG	IgA	IgM
Adults > 18y	21	0	15 (71.4)	1 (4.8)	0	16 (76.2)	1 (4.8)
Swab-/saliva-	5	0	3 (60.0)	0	0	3 (60.0)	0
Swab-/saliva+	0	0	0	0	0	0	0
Swab+/saliva-	0	0	0	0	0	0	0
Swab+/saliva+	16	0	12 (75.0)	1(6.3)	0	13 (81.3)	1 (6.2)
Children ≤ 10y	73	3 (4.1)	44 (60.3)	5 (11.1)	1 (1.37)	39 (53.4)	4 (5.5)
Swab-/saliva-	37	2 (5.4)	21 (56.8)	1(2.70)	0	20 (54.0)	0
Swab-/saliva+	0	0	0	0	0	0	0
Swab+/saliva-	12	1 (8.3)	9(75.0)	4 (33.3)**	0	7 (58.3)	3(25.0)*
Swab+/saliva+	24	0	14 (58.3)	0	1 (4.17)	12 (50.0)	1 (4.17)
Total (Adults+Children)	94	3 (3.2)	59 (62.8)	6 (6.4)	1 (1.06)	55 (58.6)	5 (5.3)
Swab-/saliva-	42	2 (4.8)	24 (57.1)	1 (2.4)	0	23 (54.8)	0
Swab-/saliva+	0	0	0	0	0	0	0
Swab+/saliva-	12	1 (8.3)*	9 (75.0)	4 (33.3)**	0	7 (58.3)	3 (25.0)**
Swab+/saliva+	40	0	26 (65.0)	1 (2.50)	1 (2.50)	25 (62.5)	2(5.00)

544 +, positive; -, negative; *p<0.1, **p<0.05 by Pearson's Chi2 test.

545

546

547

Supplementary Materials for

548

549

550 *Saliva molecular testing bypassing RNA extraction is suitable for monitoring and*
551 *diagnosing SARS-CoV-2 infection in children*

552

553 **Authors:** Marta Alenquer¹, Tiago Milheiro Silva^{2, §}, Onome Akpogheneta^{3, §}, Filipe
554 Ferreira¹, Sílvia Vale-Costa¹, Mónica Medina-Lopes¹, Frederico Batista⁴, Ana Margarida
555 Garcia³, Vasco M. Barreto⁵, Cathy Paulino⁶, João Costa⁶, João Sobral⁶, Maria Diniz-da-
556 Costa⁶, Susana Ladeiro⁶, José Delgado Alves^{4,5}, Ricardo B. Leite⁶, Jocelyne Demengeot³,
557 Maria João Rocha Brito², and Maria João Amorim^{1,*}

558

559 **This file includes:**

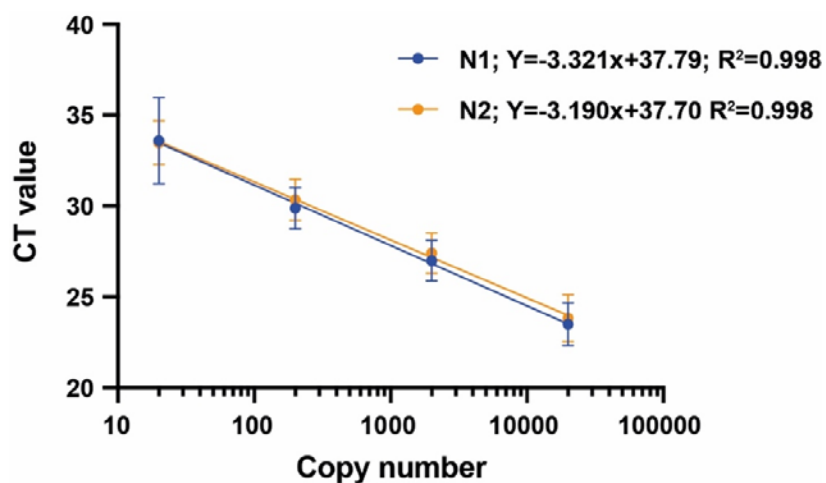
560 eFigure 1. Standard curves obtained by RT-qPCR amplification of dilution series of synthetic
561 copies of SARS-CoV-2 (20000 to 20) in fresh negative saliva samples, using the
562 N1 and the N2 primer-probe sets.

563 eFigure 2. COVID-19 rapid antigen test detects SARS-CoV-2 in saliva samples positive and
564 with CT values up to 26.

565

566

567

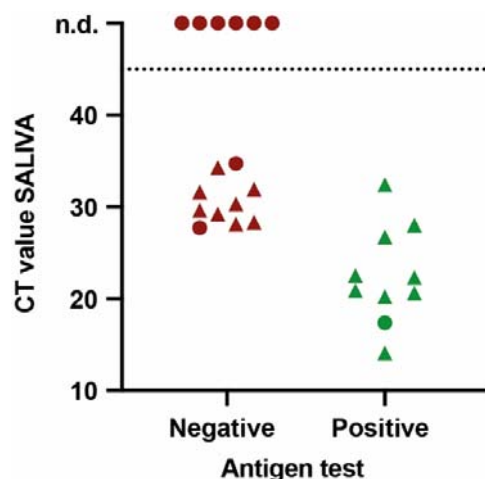


568

569 **eFigure 1.** Standard curves obtained by RT-qPCR amplification of dilution series of
570 synthetic copies of SARS-CoV-2 (20000 to 20) in fresh negative saliva samples, using the N1
571 and the N2 primer-probe sets. The obtained cycle threshold (CT) values were plotted vs. the
572 copy number on a logarithmic scale. Each sample was run in quadruplicate. Error bars
573 indicate the standard deviation.

574

575



576
577
578

579 **eFigure 2.** COVID-19 rapid antigen test detects SARS-CoV-2 in saliva samples positive and
580 with CT values up to 26. Graphical representation of CT values in saliva after RNA
581 extraction vs. rapid antigen test result, with dots representing symptomatic children, triangles
582 asymptomatic patients. n.d., not-detected. The COVID-19 antigen rapid test from ALL TEST
583 (ref. ICOV-502) was used accordingly to the manufacturer's instructions, with the exception
584 that instead of NP swab, saliva samples diluted 1:2 in extraction buffer were used.

585
586
587