

## Lessons learned from implementation of interferon-gamma release assay to screen for latent tuberculosis infection in a large multicenter observational cohort study in Brazil

1 Allyson G. Costa<sup>1,2,3,4</sup>, Brenda K.S. Carvalho<sup>1,2</sup>, Mariana Araújo-Pereira<sup>5,6,7</sup>, Hiochelton  
2 N.S. Ibiapina<sup>1,2</sup>, Renata Spener-Gomes<sup>1,2</sup>, Alexandra B. Souza<sup>1,2</sup>, Adriano Gomes-Silva<sup>8</sup>,  
3 Alice M.S. Andrade<sup>5,7</sup>, Elisangela C. Silva<sup>10,11,12</sup>, María B. Arriaga<sup>5,6,7</sup>, Aline Benjamin<sup>8</sup>,  
4 Michael S. Rocha<sup>7,9</sup>, Adriana S.R. Moreira<sup>10</sup>, Jamile G. Oliveira<sup>13</sup>, Marina C. Figueiredo<sup>14</sup>,  
5 Megan M. Turner<sup>14</sup>, Betina Durovni<sup>8,13</sup>, Solange Cavalcante<sup>8,13</sup>, Afranio L. Kritski<sup>10</sup>, Valeria  
6 C. Rolla<sup>8</sup>, Timothy R. Sterling<sup>14</sup>, Bruno B. Andrade<sup>5,6,7</sup>, Marcelo Cordeiro-Santos<sup>1,2,15\*</sup>, and  
7 the RePORT Brazil Consortium

8

9 <sup>1</sup>Instituto de Pesquisa Clínica Carlos Borborema, Fundação de Medicina Tropical Doutor  
10 Heitor Vieira Dourado, Manaus, Brazil;

11 <sup>2</sup>Programa de Pós-Graduação em Medicina Tropical, Universidade do Estado do Amazonas,  
12 Manaus, Brazil;

13 <sup>3</sup>Escola de Enfermagem de Manaus, Universidade Federal do Amazonas, Manaus, Brazil;

14 <sup>4</sup>Diretoria de Ensino e Pesquisa, Fundação Hospitalar de Hematologia e Hemoterapia do  
15 Amazonas, Manaus, Brazil;

16 <sup>5</sup>Laboratório de Inflamação e Biomarcadores, Instituto Gonçalo Moniz, Fundação Oswaldo  
17 Cruz, Salvador, Brazil;

18 <sup>6</sup>Faculdade de Medicina, Universidade Federal da Bahia, Salvador, Brazil;

19 <sup>7</sup>Multinational Organization Network Sponsoring Translational and Epidemiological Research  
20 (MONSTER) Initiative, Salvador, Brazil;

21 <sup>8</sup>Instituto Nacional de Infectologia Evandro Chagas, Fundação Oswaldo Cruz, Rio de Janeiro,  
22 Brazil;

23 <sup>9</sup>Instituto Brasileiro para Investigação da Tuberculose, Fundação José Silveira, Salvador,  
24 Brazil;

25 <sup>10</sup>Programa Acadêmico de Tuberculose, Faculdade de Medicina, Universidade Federal do  
26 Rio de Janeiro, Rio de Janeiro, Brazil;

27 <sup>11</sup>Centro de Bociências e Biotecnologia, Universidade Estadual do Norte Fluminense Darcy  
28 Ribeiro, Rio de Janeiro, Brazil;

29 <sup>12</sup>Fundação Saúde do Estado do Rio de Janeiro, Secretaria Estadual de Saúde do Estado  
30 do Rio de Janeiro, Rio de Janeiro, Brazil;

31 <sup>13</sup>Secretaria Municipal de Saúde do Rio de Janeiro, Rio de Janeiro, Brazil;

32 <sup>14</sup>Division of Infectious Diseases, Department of Medicine, Vanderbilt University School of  
33 Medicine, Nashville, Tennessee, USA;

34 <sup>15</sup>Faculdade de Medicina, Universidade Nilton Lins, Manaus, Brazil.

35

36  
37 \* **Correspondente:** Marcelo Cordeiro-Santos - marcelocordeiro@uea.edu.br.

38  
39 **Running Title:** IGRA implementation for LTBI screening

40  
41 **Abstract**

42 **Background:** Interferon-gamma release assay (IGRA) has emerged as a useful tool in  
43 identifying latent tuberculosis infection (LTBI). This assay can be performed through testing  
44 platforms, such as QuantiFERON-TB Gold Plus (QFT<sup>®</sup>-Plus). This in vitro test has been  
45 incorporated by several guidelines worldwide and has recently been considered for the  
46 diagnosis of LTBI by the World Health Organization (WHO). The possibility of systematically  
47 implementing IGRAs such as QFT<sup>®</sup>-Plus in centers that perform LTBI screening has been  
48 accelerated by the decreased availability of tuberculin skin testing (TST) in several countries.  
49 Nevertheless, the process to implement IGRA testing in routine clinical care has many gaps.  
50 **Methods:** The study utilized the expertise acquired by the laboratory teams of the Regional  
51 Prospective Observational Research in Tuberculosis (RePORT)-Brazil consortium during  
52 study protocol implementation of LTBI screening of TB close contacts. **Results:** RePORT-  
53 Brazil includes clinical research sites from Brazilian cities and is the largest multicenter cohort  
54 of TB close contacts to date in the country. Operational and logistical challenges faced during  
55 IGRA implementation in all four study laboratories are described, as well as the solutions that  
56 were developed and led to the successful establishment of IGRA testing in RePORT-Brazil.  
57 **Conclusions:** The problems identified and resolved in this study can assist laboratories  
58 implementing IGRAs, in addition to manufacturers of IGRAs providing effective technical  
59 support. This will facilitate the implementation of IGRA testing in countries with a high TB  
60 burden, such as Brazil.

61 **Keywords:** Tuberculosis, IGRA, QuantiFERON-Plus, LTBI, Screening, Quality control.

62  
63 **Importance**

64 The interferon-gamma release assay (IGRA) has emerged as a useful tool in identifying  
65 persons with latent tuberculosis infection (LTBI). Although the implementation of IGRAs is of  
66 utmost importance, to our knowledge, there is scarce information on identification of logistical  
67 and technical challenges of systematic screening of for LTBI on a large scale. Thus, the  
68 problems identified and resolved in this study can assist laboratories implementing IGRAs, in  
69 addition to manufacturers of IGRAs providing effective technical support. This will facilitate  
70 the implementation of IGRA testing in countries with a high TB burden, such as Brazil.

71  
72

## 73 1 Introduction

74 The World Health Organization (WHO) estimates that one quarter of the global  
75 population is infected with *M. tuberculosis* (Mtb) (1, 2). Most individuals exposed to Mtb who  
76 become infected are asymptomatic, referred to as latent tuberculosis infection (LTBI).  
77 Between 5 to 10% of individuals with LTBI, if not treated with tuberculosis preventive therapy  
78 (TPT), can progress to active tuberculosis (TB) during their lifetime (3, 4). Thus, diagnosis  
79 and treatment of LTBI is critical to reduce the incidence of active TB and control Mtb  
80 transmission.

81 In several countries endemic for TB, such as Brazil, screening for LTBI has traditionally  
82 utilized the tuberculin skin test (TST), which consists in the intradermal inoculation of the TB-  
83 purified protein derivative (PPD) and evaluation for cutaneous induration. However, this test  
84 has several limitations, such as false-positive reactions in persons with BCG vaccination or  
85 infection with non-tuberculosis mycobacteria, and false-negative reactions in persons with  
86 immune suppression (5, 6). Additional issues include the requirement for a return visit to  
87 assess the skin for induration within 48-72 hours after PPD inoculation, and the subjective  
88 interpretation of the dermal reaction (i.e., inter-reader variability) (7, 8). Recent scientific  
89 advances in molecular investigations allowed the isolation of Mtb-specific antigens that drive  
90 production of interferon-gamma (IFN- $\gamma$ ) by specific T-lymphocytes, enabling the development  
91 of more specific assays based on cellular recall responses, to identify LTBI (9, 10).

92 The interferon-gamma release assay (IGRA) has emerged as a useful tool in  
93 identifying persons with LTBI. This assay can be performed through two distinct testing  
94 platforms, such as the enzyme-linked immunosorbent spot (ELISPOT) assay (T-SPOT.TB)  
95 or QuantiFERON-TB Gold Plus (QFT<sup>®</sup>-Plus). These in vitro tests have been incorporated into  
96 several guidelines worldwide and have recently been considered equivalent for the diagnosis  
97 of LTBI by the WHO (9, 10). Of note, both IGRA tests have advantages over TST in several  
98 aspects, including: (i) they do not require a follow-up visit for obtaining results, and (ii) they  
99 use in vitro stimulation of cells from the peripheral blood with Mtb-derived ESAT-6 and CFP-  
100 10 proteins, which are absent in the BCG vaccine as well as in most non-TB mycobacteria,  
101 resulting in a higher specificity (11–13). The advantages of the IGRA over the TST indicate  
102 that this immunoassay may be a reliable alternative. On the other hand, the use of IGRA  
103 results on high costs, the necessity to be carried out in sites using good clinical and laboratory  
104 practices and well-trained technical personnel and available equipment's.

105 The advantages of the IGRA over the TST indicate that this immunoassay may be a  
106 reliable alternative to TST. The possibility of systematically implementing IGRAs such as  
107 QFT<sup>®</sup>-Plus in centers that perform LTBI screening has been accelerated by the decreased  
108 availability of TST in several countries, including Brazil (14). Implementation of QFT<sup>®</sup>-Plus in  
109 TB reference centers could facilitate screening, diagnosis, and treatment of LTBI, and thereby  
110 reduce the TB burden.

111 Although the implementation of IGRAs is of utmost importance, to our knowledge,  
112 there is scarce information on identification of logistical and technical challenges of systematic  
113 screening of for LTBI on a large scale. The present study was designed to fill this gap and  
114 provide information that would improve the effectiveness and efficiency of IGRA-based LTBI  
115 screening. The operational and logistical challenges faced during IGRA implementation in all

116 four study laboratories are also described, as well as the solutions that were developed and  
117 which led to the successful establishment of IGRA testing in RePORT-Brazil.

118

## 119 **2 Material and Methods**

### 120 **2.1 Study Design and Laboratory Sites**

121 The present investigation was an implementation study performed within a multicenter  
122 cohort study (RePORT-Brazil) between 2016 and 2019. It was conducted in five research  
123 centers located in four Brazilian cities: Fundação de Medicina Tropical Dr. Heitor Vieira  
124 Dourado (FMT-HVD) in Manaus-Amazonas, Instituto Brasileiro para Investigação da  
125 Tuberculose (IBIT) in Salvador-Bahia, Secretaria Municipal de Saúde de Duque de Caxias  
126 (SMS-DC) in Duque de Caxias-Rio de Janeiro, Instituto Nacional de Infectologia Evandro  
127 Chagas (INI) and Clínica da Família Rinaldo Delamare, Secretaria Municipal de Saúde do  
128 Rio de Janeiro (SMS-RJ) both in Rio de Janeiro-Rio de Janeiro (15). The five health centers  
129 are located in 3 distinct regions of Brazil, with similar climate conditions (equatorial and  
130 tropical), temperature and humidity, showing range 19.9°C to 26.4°C and 77.2 to 85.1%,  
131 respectively. (16, 17).

132

### 133 **2.2 Maintenance and Biosafety of Laboratory Sites**

134 Standard Operating Procedures (SOPs), Good Clinical Practice (GCP), Good Clinical  
135 Laboratory Practices (GCLP) and other trainings were carried out by the project staff prior to  
136 initiating the study. In addition, all sites provided up to date equipment maintenance  
137 certifications to ensure test quality and to minimize risks for laboratory technicians who  
138 processed biologicals daily.

139

### 140 **2.3 QuantiFERON-TB Gold Plus (QFT®-Plus)**

141 Initially QFT-TB Gold in Tube (QFT-GIT) was implemented into the laboratory routine  
142 of the RePORT-Brazil consortium, subsequently replaced by QFT®-Plus. Every laboratory  
143 received training on sample collection and processing by the QIAGEN corporation  
144 (Chatsworth, CA, USA). Supplementary Figure 1 summarizes QFT®-Plus steps. Briefly,  
145 venous blood for testing was collected in four tubes (Nil, TB1, TB2 and Mitogen) and  
146 incubated at 37°C for 20h. After incubation, samples were stored at -20°C until the enzyme-  
147 linked immunosorbent assay (ELISA) was performed within 2 weeks. IFN- $\gamma$  levels  
148 (international units per milliliter [IU/mL]) were quantified with a 4-point standard curve. QFT®-  
149 Plus Analysis Software was used to generate the results according to the manufacturer's  
150 recommendations (18). The software performed a quality control assessment of the assay,  
151 generated a standard curve, and provided quantitative (IU/mL) and qualitative (positive,  
152 negative, or indeterminate) results.

153

## 154 **2.4 Laboratory data of the QFT<sup>®</sup>-Plus implementation process**

155 Laboratory information from the QFT<sup>®</sup>-Plus implementation process was evaluated by  
156 the teams from all RePORT-Brazil laboratories. Data were obtained from team training,  
157 equipment maintenance, and pre-analytical evaluations, such as: type of sample collection,  
158 place of sample collection and processing, tube identification (ID), transport quality control  
159 (types of transport, time and temperature of the samples), and presence of hemolysis, clots  
160 and volume of the samples, as well as qualitative results (number of positive, negative and  
161 indeterminate tests). All data were entered into the Research Electronic Data Capture  
162 (REDCap) platform, reviewed by data managers for quality control (QC), and subsequently  
163 approved for the study analyses.

164

## 165 **2.5 Descriptive and Statistical Analysis**

166 Descriptive analyses were performed to characterize the study labs and quality control  
167 measurements. Categorical variables were displayed as frequency and percentages and  
168 compared using a two-sided Pearson's chi-square test (Yate's correction) or the Fisher's two-  
169 tailed test in 2x3 or 2x2 tables, respectively. Continuous variables were displayed as median  
170 and interquartile ranges (IQR) and tested for Gaussian distribution using the D'Agostino-  
171 Pearson test. Comparisons of values between two groups of data were performed using the  
172 Mann-Whitney U test. The Spearman rank correlation test was carried out to assess  
173 relationships between variables. Data analyses were performed using R (version 3.6.3), using  
174 Hmisc (version 4.4.1), compare Groups (version 4.4.3), ggplot2 (version 3.3.2) and ggcorrplot  
175 (version 0.1.3) R packages. All analyses were prespecified. Differences with p-value <0.05  
176 were considered statistically significant.

177

## 178 **2.6 Ethical Approval**

179 The study was conducted according to the principles of the Declaration of Helsinki.  
180 The RePORT-Brazil protocol was approved by the institutional review boards at each study  
181 site and at Vanderbilt University Medical Center. In addition, the present study was  
182 submitted to and approved by the Ethical Committee at Instituto de Pesquisa Clínica Evandro  
183 Chagas, Fundação Oswaldo Cruz (FIOCRUZ), under the protocol registration number  
184 #688.067, Secretaria Municipal de Saude do Rio de Janeiro (SMS/RJ), under the protocol  
185 registration number #740.554, Hospital Universitario Clementino Fraga Filho, under the  
186 protocol registration number #852.519, Maternidade Climério de Oliveira (MCO),  
187 Universidade Federal do Bahia (UFBA), under the protocol registration number #723.168 and  
188 Fundação de Medicina Tropical Dr. Heitor Vieira Dourado (FMT-HVD), under the protocol  
189 registration number #807.595. The patients, parents or legal guardians read and signed the  
190 informed consent form prior to inclusion of the patients in the study. The study fulfills the  
191 principles of the Helsinki declaration and the 466/2012 resolution of the Brazilian National  
192 Health Council for research involving human participants.

193

## 194 **3 Results**



### 195 **3.1 Interferon-gamma release assay implementation**

196 The IGRA/QFT<sup>®</sup>-Plus implementation process started with the checklist provided by  
197 QIAGEN Corp. The four laboratories proceeded with the acquisition of equipment  
198 (micropipettes, 37°C incubator, centrifuge, refrigerator, freezer -20°C, microplate washer,  
199 microplate reader and computer), reagents (ultrapure dH<sub>2</sub>O and cleaning solutions),  
200 consumables (tips, microtubes and solution reservoir), QFT<sup>®</sup>-Plus Tube kit and QFT<sup>®</sup>-Plus  
201 ELISA kit. Subsequently, laboratory technicians took GCLP and were trained on the steps of  
202 collecting, transporting, incubating, and processing samples for laboratory tests. In addition,  
203 QFT<sup>®</sup>-Plus ELISA kit assays were performed, and a pilot test was carried out, with the  
204 objective of including improvement strategies to initiate the study protocol (**Figure 1**).

205 During the IGRA implementation process, several gaps were identified, even after  
206 following all of the recommendations of the manufacturer of the QFT<sup>®</sup>-Plus assay. Initially,  
207 the laboratories identified problems related to acquisition of equipment, reagents, and  
208 consumables. The equipment had to be purchased through the sites, generating additional  
209 costs. Furthermore, the microplate washer had problems at the beginning of the ELISA  
210 assays, requiring corrective maintenance. QFT<sup>®</sup>-Plus Tube kits and QFT<sup>®</sup>-Plus ELISA kits  
211 were imported, which generated logistical problems regarding delivery to the sites. To resolve  
212 this problem, delivery of the QFT<sup>®</sup>-Plus Tubes and ELISA kits were directed to one of the  
213 clinical sites in Rio de Janeiro, which then distributed them to the other laboratories.

214

### 215 **3.2 Interferon-gamma release assay under routine conditions**

216 The five clinical sites started recruiting patients and collecting samples under routine  
217 conditions. Prior to starting, the collecting station was organized, accounting for the  
218 environment and the tubes to be used in the QFT<sup>®</sup>-Plus test. These tubes had to be stored  
219 between 4°C and 25°C and taken out for immediate use only. In addition, the tubes had to be  
220 collected in a specific order, following the manufacturer's recommendations, with the Nil tube  
221 being collected first, followed by the TB1, TB2 and Mitogen tubes. The tubes containing the  
222 samples went through a homogenization process that consisted of several inversions, where  
223 all the biological material had to come into contact with the inner surface of the tube (L-motion  
224 with exactly 10 inversions). Finally, QFT<sup>®</sup>-Plus Tubes was packed in boxes with temperatures  
225 ranging from 17°C to 27°C for transfer to the processing laboratory (**Figure 2**).

226 After collection at the clinical sites, samples were transported to the four RePORT-  
227 Brazil laboratories in two different settings, clustered in: Setup A: pertaining to sites 1 and 2,  
228 characterized by performing the collection and processing of samples in the same place, with  
229 the collection room and laboratory within the same site. Thus, the study staff responsible for  
230 collecting and organizing the samples could transport the samples to the laboratory, without  
231 requiring a vehicle (bicycle, motorcycle or car) (**Figure 2A**); Setup B: pertaining to sites 3, 4  
232 and 5, characterized by performing the collection and processing of samples in distinct places,  
233 with the need for transportation to the laboratory and thus greater demand for time,  
234 organization and attention so that there was no excessive tube vibration. This setup required  
235 a vehicle (bicycle, motorcycle or car) to transport samples (**Figure 2B**).

236 Upon arrival at the labs, samples had to pass a quality check regarding transport time,  
237 temperature, tube ID, volume evaluation and the presence of hemolysis or clots. Finally, the  
238 samples were processed, incubated at 37°C for 20 hours, aliquots prepared, and the plasma  
239 samples frozen at -20°C until the QFT®-Plus ELISA was performed.

240

### 241 **3.3 Interferon-gamma release assay results under routine conditions in two settings**

242 **Figure 3** summarizes the IGRA/QFT®-Plus results under routine conditions in Setup  
243 A-B (Figure 3A) and sites 1-5 (Figure 3B) during the four-year study period (2016-2019).  
244 These results were obtained after the QFT®-Plus ELISA assays were performed by the teams  
245 at the sites. For this, the aliquots containing the samples were thawed and used only once.  
246 In addition to the recommendations indicated by the manufacturer, the laboratories underwent  
247 quality control with the results validated by an external laboratory. Setup B had a higher  
248 percentage of indeterminate results, mainly in the first years of implementation of QFT®-Plus.  
249 In addition, the number of samples changed over time for each setup, as follows: 2016 (Setup  
250 A = 190; Setup B = 173), 2017 (Setup A = 366; Setup B = 258), 2018 (Setup A = 505; Setup  
251 B = 471), 2019 (Setup A = 570; Setup B = 333). Also note that over the years of  
252 implementation, the indeterminate percentage tended to decrease. This could be associated  
253 with the learning process of site personnel. In addition, higher undetermined results were  
254 observed in Setup A in 2018 and 2019, specifically at site 1, which could be attributed to a  
255 greater number of tests performed in this setup and site.

256

### 257 **3.4 Non-conformities in Interferon-gamma release assay testing**

258 During the QFT®-Plus implementation process, several problems were detected,  
259 generating non-conformities, such as samples without an ID, transport with temperature  
260 outside the established standard (temperature deviation), sample leakage, and other issues  
261 (e.g. transport box change, coagulated samples, or a non-standard set of transport  
262 conditions). The proportion of non-conformities is shown in **Figure 4**.

263 The temperature deviation and other non-conformities were noted particularly among  
264 Setup B sites (**Supplementary Table 1**) compared to Setup A in all analyzed years ( $p < 0.001$ ).  
265 These results were likely due to conditions related to the collection and transportation of  
266 samples, since Setup B required sample transport by vehicle. In addition, these gaps  
267 generated learning opportunities for the teams, which over the years of implementation,  
268 decreased the proportion of reported non-conformities. Of note, Setup B also presented  
269 significantly higher occurrences of transport box change, coagulated samples, and lack of  
270 minimum transport conditions, characterized in the table as "Others" ( $p < 0.001$ ,  
271 **Supplementary Table 1**).

272

### 273 **3.5 Temperature deviation was the main non-conformity in Interferon-gamma** 274 **release assays**

275 Temperature deviation was the main non-conformity identified in our study. When the  
276 occurrence was observed over the quarters of the evaluated years, it occurred mainly in the  
277 months with the highest temperatures at the sites, such as spring and summer (3<sup>rd</sup>, 4<sup>th</sup> and  
278 1<sup>st</sup> quarter; **Figure 5**). There was a decrease in this non-conformity over the years of the study  
279 period.

280

### 281 **3.6 Dynamics of the time and temperature between collection and processing of** 282 **Interferon-gamma release assay samples**

283 The distance between the collection site and the sample processing laboratory directly  
284 influenced the time and the temperature variation during transportation (**Table 1**). Setup A  
285 showed a significantly shorter time between sending and receiving the samples in all studied  
286 years ( $p < 0.001$ ), influencing the temperature variation ( $\Delta$ ), which was also significantly  
287 less in comparison to Setup B ( $p < 0.001$ ).

288 Setup A had higher temperature at the time of specimen shipment compared to Setup  
289 B, but both Setups had similar temperatures at the time of specimen receipt/arrival. (**Figure**  
290 **6A, 6B**). Although within the established standard, Setup A had a significantly higher  
291 temperature at the time of both shipment and receipt. Despite this, the temperature variation  
292 ( $\Delta$ ) was significantly greater in Setup B (**Figure 6C**). This can also be seen when analyzing  
293 the data by site (**Supplementary Figure 2**).

294 Over the years of implementation, the variation in time between sending and receiving  
295 samples tended to decrease until 2018, then there was an increase in  $\Delta$  in 2019. The  
296 decrease in time variation was possibly because study and transport became more efficient  
297 (collection, sending and processing) with the implementation of the test on the sites. Although  
298 we observed this increase in 2019, it is noteworthy that there was an increase in the number  
299 of samples analyzed that year.

300 Finally, a correlation analysis was performed between the  $\Delta$  (variation of receiving -  
301 sending) of time and temperature. In this analysis it was possible to note that the  $\Delta^{\circ}\text{C}$  was  
302 directly correlated with the  $\Delta$  minutes ( $r = 0.37$ ,  $p < 0.001$ ), and that this variation was  
303 particularly seen in Setup B (**Figure 7**).

304

## 305 **4 Discussion**

306 In the IGRA implementation process, gaps were identified mainly in the pre-analytical  
307 phase of the QFT<sup>®</sup>-Plus assay. The training of laboratory technicians without experience in  
308 sample collection, transporting and processing, with ELISA assays, was straight-forward and  
309 the learning curve was quick, despite pre-analytical errors identified after the start of the study.  
310 Pre-analytical errors have important implications for the reproducibility and accuracy of  
311 IGRAs, indicating the need to standardize the pre-analytical steps, as shown previously (19).  
312 The sites standardized the preventive maintenance process of the equipment, to minimize  
313 problems. The delivery of the QFT<sup>®</sup>-Plus Tubes and ELISA kits were directed to one of the  
314 clinical sites, which then distributed them to the other laboratories, mitigating import and  
315 logistic issues. The steps of collection, transport and processing of the samples started to be



316 monitored via Case Report Forms (CRFs). The lessons learned at this stage were important  
317 to create mechanisms for tracking non-conformities, It is noteworthy that the use of CRFs is  
318 indicated for monitoring non-conformities in clinical trials, however, they can also be used in  
319 routine laboratory conditions (20).

320 The sample collection, transport, and processing settings (Setup A and B) in the study  
321 influenced the results of the QFT<sup>®</sup>-Plus. Setup B had a higher percentage of indeterminate  
322 and positive results, probably due to the longer time between the collection and processing  
323 of the samples, in addition to other variables evaluated here (e.g., temperature of transport,  
324 ID of the tubes, and packaging of the samples). It is important to ensure that, in the analytical  
325 phase, the laboratory technicians involved in these steps are comfortable with performing  
326 QFT<sup>®</sup>-Plus, including simple tasks such as controlling the temperature of the shipping boxes,  
327 identifying non-conformities, minimizing errors, and identifying problems in the results  
328 generated. It is recommended to include in the QFT<sup>®</sup>-Plus implementation planning a period  
329 of adaptation and short retraining, directed at the critical stages of sample collection, transport  
330 and processing, with the aim of gradually minimizing or eliminating non-conformities and pre-  
331 analytical errors. This learning can assist in the quality control of test results and performance,  
332 since the reproducibility of IGRA can be influenced by these factors (21).

333 Biological samples can have different performance or results with respect to the  
334 quantity of analytes used and based on this, we must seek the identification of points that  
335 cause variation of test results. The laboratory routine can have different components that can  
336 cause variability in results, such as different processing rates, variation in processing rates  
337 throughout the month, and variation of factors related to the environment (such as  
338 temperature) throughout the year (22).

339 The reproducibility of the test results depends directly on the training of the team, since  
340 variation in the "operator" for the collection, homogenization and performance of the test can  
341 impact the result. Therefore, the standardization of quality control in the clinical and laboratory  
342 spheres is essential so that there are no significant effects on the result. In addition, structural  
343 variations between different laboratories can influence the proportion of indeterminate results  
344 (21, 23).

345 With regard to immunological molecules that can be released and consumed quickly  
346 (in vitro), delays in the start of the incubation of study samples can interfere in the  
347 quantification of IFN- $\gamma$  levels, leading to a decrease of up to 0.24 IU/mL after 6 hours (19, 21).  
348 Different incubation times, without a specific pattern, can possibly influence test results.  
349 Therefore, it is important to follow the manufacturer's guidelines (21, 23). The required  
350 quantity of final volume of biological sample must always be used, and it is not possible to  
351 use volumes smaller or larger than that recommended for the test. Due to the amount of  
352 "biological stimulus" available per tube, the amount of IFN- $\gamma$  released at the end of the test  
353 may be affected by variation in the sample volume used (21, 24, 25).

354 The expansion of the use of IGRAs, such as QFT<sup>®</sup>-Plus, must be well planned, with  
355 negotiations with the manufacturer regarding the logistics of delivery of the kits in areas with  
356 difficult access. In addition, the sample collection, transport, and processing settings must be  
357 evaluated, with the aim of mitigating errors that may interfere with the test results. Training of  
358 laboratory technicians is extremely important, and regular training develops a sense of  
359 responsibility towards reporting non-conformities and maintaining data quality after initial

360 implementation. Finally, we believe that some of the problems identified in this study can  
361 assist laboratories wishing to implement IGRAs, in addition to manufacturers of IGRAs  
362 providing effective technical support. These findings may facilitate the implementation of  
363 IGRA testing in countries with a high TB burden, such as Brazil.

364

## 365 **5 Conflict of Interest**

366 The authors declare that the research was conducted in the absence of any  
367 commercial or financial relationships that could be construed as a potential conflict of interest.

368

## 369 **6 Author Contributions**

370 AGC and MCS established the initial conception and wrote this manuscript. AGC,  
371 BKSC, MA-P, HNSI, RS-G, ABS, AG-S, AMSA, ECS, AB, MSR, ASRM, JG and, MCF  
372 collected, analyzed, and reviewed the data. AGC, BKSC, MA-P, MMT analyzed data and  
373 designed the illustrations and tables. MCF, BD, SC, ALK, VCR, TRS, BBA, MCS supervised  
374 the project development, interpreted the data, and reviewed this manuscript. All authors read,  
375 discussed the general outline of the article together and approved the final manuscript.

376

## 377 **7 Funding**

378 The study was supported by the Intramural Research Program of the Fundação  
379 Oswaldo Cruz (B.B.A.), Intramural Research Program of the Fundação José Silveira (B.B.A.,  
380 M.S.R., B.M.F.N.), Departamento de Ciência e Tecnologia (DECIT) - Secretaria de Ciência e  
381 Tecnologia (SCTIE) – Ministério da Saúde (MS), Brazil [25029.000507/2013-07 to V.C.R.]  
382 and the National Institutes of Allergy and Infectious Diseases [U01-AI069923 to TRS, ABS,  
383 GA, BMFN, ATLQ, MCF, MSR, AB, ASRM, JGO, VCR, BD, JRLS, ALK, SC, TRS, BBA, and  
384 MCS]. MAP received a fellowship from Coordenação de Aperfeiçoamento de Pessoal de  
385 Nível Superior (Finance code: 001). B.B.A, V.C.R. and A.K. are senior investigators whereas  
386 A.B.S. is a PhD fellow from the Conselho Nacional de Desenvolvimento Científico e  
387 Tecnológico (CNPq), Brazil.

388

## 389 **8 Acknowledgments**

390 The authors thank the study participants. We also thank the teams of clinical and  
391 laboratory platforms of RePORT-Brazil. A special thanks to Elze Leite (FIOCRUZ, Salvador,  
392 Brazil), Eduardo Gama (FIOCRUZ, Rio de Janeiro, Brazil), Elcimar Junior (FMT-HVD,  
393 Manaus, Brazil), and Hilary Vansell (VUMC, Nashville, USA) for administrative and logistical  
394 support.

395

## 396 **9 Data Availability Statement**

397 The original contributions presented in the study are included in the  
398 article/supplementary material, further inquiries can be directed to the corresponding  
399 author/s.

400

## 401 **10 Contributors: Participating Investigators in RePORT Brazil Consortium**

402 The RePORT Brazil Consortium consists of 12 partner institutions from Brazil  
403 represented by the following members: Amanda Araújo da Costa (A.A. Costa), Instituto de  
404 Pesquisa Clínica Carlos Borborema, Fundação de Medicina Tropical Doutor Heitor Vieira  
405 Dourado, Manaus, Brazil; André Luiz Bezerra (A.L. Bezerra), Faculdade de Medicina,  
406 Universidade Federal do Rio de Janeiro, Rio de Janeiro, Brazil; Anna Cristina Calçada  
407 Carvalho (A.C.C Carvalho), Faculdade de Medicina, Universidade Federal do Rio de Janeiro,  
408 Rio de Janeiro, Brazil, Laboratório de Inovações em Terapias, Ensino e Bioprodutos,  
409 Fundação Oswaldo Cruz, Rio de Janeiro, Brazil; Anna Karla Silveira (A.K. Silveira),  
410 Faculdade de Medicina, Universidade Federal do Rio de Janeiro, Rio de Janeiro, Brazil;  
411 Betânia M. F. Nogueira (B.M.F. Nogueira), Instituto Brasileiro para Investigação da  
412 Tuberculose, Fundação José Silveira, Salvador, Brazil, Multinational Organization Network  
413 Sponsoring Translational and Epidemiological Research (MONSTER) Initiative, Salvador,  
414 Brazil, Faculdade de Medicina, Universidade Federal da Bahia, Salvador, Brazil; Bruna da  
415 Costa Oliveira Lima (B.C.O. Lima), Instituto de Pesquisa Clínica Carlos Borborema,  
416 Fundação de Medicina Tropical Doutor Heitor Vieira Dourado, Manaus, Brazil; Bruna Pires  
417 de Loiola (B.P. Loiola), Instituto de Pesquisa Clínica Carlos Borborema, Fundação de  
418 Medicina Tropical Doutor Heitor Vieira Dourado, Manaus, Brazil; Carolina Arana Schmaltz  
419 Stanis (C.A. Schmaltz), Instituto Nacional de Infectologia Evandro Chagas, Fundação  
420 Oswaldo Cruz, Rio de Janeiro, Brazil; Eline Naiane de Freitas Medeiros (E.N.F. Medeiros),  
421 Instituto de Pesquisa Clínica Carlos Borborema, Fundação de Medicina Tropical Doutor  
422 Heitor Vieira Dourado, Manaus, Brazil; Francine Peixoto Ignácio (F.P. Ignácio), Instituto  
423 Nacional de Infectologia Evandro Chagas, Fundação Oswaldo Cruz, Rio de Janeiro, Brazil;  
424 Hayna Malta Santos (H.M. Santos), Faculdade de Medicina, Universidade Federal da Bahia,  
425 Salvador, Brazil, Laboratório de Inflamação e Biomarcadores, Instituto Gonçalo Moniz,  
426 Fundação Oswaldo Cruz, Salvador, Brazil; Jéssica Rebouças Silva (J.R. Silva), Faculdade  
427 de Medicina, Universidade Federal da Bahia, Salvador, Brazil, Laboratório de Inflamação e  
428 Biomarcadores, Instituto Gonçalo Moniz, Fundação Oswaldo Cruz, Salvador, Brazil; João  
429 Marine Neto (J.M. Neto), Secretaria Municipal de Saúde do Rio de Janeiro - SMS-RJ - Rio  
430 de Janeiro, Brazil, Hospital Federal do Andaraí - Ministério da Saúde, Brazil; Leandro Sousa  
431 Garcia (L.S. Garcia), Instituto de Pesquisa Clínica Carlos Borborema, Fundação de Medicina  
432 Tropical Doutor Heitor Vieira Dourado, Manaus, Brazil; Maria Luciana Silva-Freitas (M.L.  
433 Silva-Freitas), Laboratório Interdisciplinar de Pesquisas Médicas, Instituto Oswaldo Cruz,  
434 FIOCRUZ, Rio de Janeiro, RJ; Mayla Gabriele Miranda de Melo (M.G.M. Melo), Faculdade  
435 de Medicina, Universidade Federal do Rio de Janeiro, Rio de Janeiro, Brazil; Rosa Maria  
436 Placido-Pereira (R.S. Placido-Pereira), Laboratório Interdisciplinar de Pesquisas Médicas,  
437 Instituto Oswaldo Cruz, FIOCRUZ, Rio de Janeiro, RJ; Samyra Almeida-Da-Silveira (S.  
438 Almeida-Da-Silveira), Laboratório Interdisciplinar de Pesquisas Médicas, Instituto Oswaldo  
439 Cruz, FIOCRUZ, Rio de Janeiro, RJ; Vanessa de Souza Nascimento (V.S. Nascimento),  
440 Instituto Brasileiro para Investigação da Tuberculose, Fundação José Silveira, Salvador,

441 Brazil; 5. Multinational Organization Network Sponsoring Translational and Epidemiological  
442 Research (MONSTER) Initiative, Salvador, Brazil, Bahiana School of Medicine and Public  
443 Health, Bahia Foundation for the Development of Sciences, Salvador, Brazil.

444

## 445 **11 Reference**

- 446 1. World Health Organization (WHO). 2020. Global Tuberculosis Report 2020World  
447 Health Organization. Geneva.
- 448 2. Houben RMGJ, Dodd PJ. 2016. The Global Burden of Latent Tuberculosis Infection:  
449 A Re-estimation Using Mathematical Modelling. *PLOS Med* 13:e1002152.
- 450 3. WHO. 2020. WHO | Global tuberculosis report 2019World Health Organization.
- 451 4. Horsburgh CR. 2004. Priorities for the Treatment of Latent Tuberculosis Infection in  
452 the United States. *N Engl J Med* 350:2060–2067.
- 453 5. Farhat M, Greenaway C, Pai M, Menzies D. 2006. False-positive tuberculin skin tests:  
454 what is the absolute effect of BCG and non-tuberculous mycobacteria? *Int J Tuberc  
455 Lung Dis* 10:1192–204.
- 456 6. Morrison J, Pai M, Hopewell PC. 2008. Tuberculosis and latent tuberculosis infection  
457 in close contacts of people with pulmonary tuberculosis in low-income and middle-  
458 income countries: a systematic review and meta-analysis. *Lancet Infect Dis* 8:359–68.
- 459 7. Secretaria de Vigilância em Saúde. Departamento de Vigilância das Doenças  
460 Transmissíveis. BM da S. 2014. Técnicas de Aplicação e Leitura da Prova  
461 Tuberculínica.
- 462 8. Brasil. 2019. Manual de recomendações para o Controle da Tuberculose no  
463 BrasilMinistério da Saúde.
- 464 9. Pai M, Behr M. 2016. Latent Mycobacterium tuberculosis Infection and Interferon-  
465 Gamma Release Assays. *Microbiol Spectr*  
466 <https://doi.org/10.1128/microbiolspec.tbtb2-0023-2016>.
- 467 10. Lalvani A, Pareek M. 2010. Interferon gamma release assays: principles and practice.  
468 *Enferm Infecç Microbiol Clin*.
- 469 11. Andersen P, Munk ME, Pollock JM, Doherty TM. 2000. Specific immune-based  
470 diagnosis of tuberculosis. *Lancet*.
- 471 12. Ferrara G, Losi M, Meacci M, Meccugni B, Piro R, Roversi P, Bergamini BM, D'Amico  
472 R, Marchegiano P, Rumpianesi F, Fabbri LM, Richeldi L. 2005. Routine hospital use  
473 of a new commercial whole blood interferon- $\gamma$  assay for the diagnosis of tuberculosis  
474 infection. *Am J Respir Crit Care Med* <https://doi.org/10.1164/rccm.200502-196OC>.
- 475 13. Theel ES, Hilgart H, Breen-Lyles M, McCoy K, Flury R, Breeher LE, Wilson J, Sia IG,  
476 Whitaker JA, Clain J, Aksamit TR, Escalantec P. 2018. Comparison of the  
477 QuantiFERON-TB gold plus and QuantiFERON-TB gold in-tube interferon gamma  
478 release assays in patients at risk for tuberculosis and in health care workers. *J Clin  
479 Microbiol* <https://doi.org/10.1128/JCM.00614-18>.
- 480 14. BRASIL M da S. 2018. Protocolo de vigilância da infecção latente pelo

- 481 Mycobacterium tuberculosis no Brasil Ministério da Saúde.
- 482 15. Arriaga MB, Amorim G, Queiroz ATL, Rodrigues MMS, Araújo-Pereira M, Nogueira  
483 BMF, Souza AB, Rocha MS, Benjamin A, Moreira ASR, de Oliveira JG, Figueiredo  
484 MC, Turner MM, Alves K, Durovni B, Lapa-e-Silva JR, Kritski AL, Cavalcante S, Rolla  
485 VC, Cordeiro-Santos M, Sterling TR, Andrade BB. 2021. Novel stepwise approach to  
486 assess representativeness of a large multicenter observational cohort of tuberculosis  
487 patients: The example of RePORT Brazil. *Int J Infect Dis* 103:110–118.
- 488 16. IBGE IB de GE. 2021. Mapa do clima no Brasil.
- 489 17. (CDI) CDI. 2021. Dados do clima no Brasil.
- 490 18. QIAGEN. QuantiFERON-TB Gold Plus (QFT-plus) ELISA package insert.  
491 Germantown, USA. 2017. Available at: [https://www.quantiferon.com/wp-](https://www.quantiferon.com/wp-content/uploads/2017/10/QFT-plus-ELISA-IFU-L1095849-R02.pdf)  
492 [content/uploads/2017/10/QFT-plus-ELISA-IFU-](https://www.quantiferon.com/wp-content/uploads/2017/10/QFT-plus-ELISA-IFU-L1095849-R02.pdf) L1095849-R02.pdf Accessed on  
493 08/03/2019.
- 494 19. Doberne D, Gaur RL, Banaei N. 2011. Preanalytical Delay Reduces Sensitivity of  
495 QuantiFERON-TB Gold In-Tube Assay for Detection of Latent Tuberculosis Infection.  
496 *J Clin Microbiol* 49:3061–3064.
- 497 20. Gliklich RE, Dreyer NA, Leavy MB. 2014. Registries for Evaluating Patient Outcomes:  
498 A User’s Guide Interfacing Registries with Electronic Health Records, 3rd ed. Agency  
499 for Healthcare Research and Quality.
- 500 21. Tagmouti S, Slater M, Benedetti A, Kik S V., Banaei N, Cattamanchi A, Metcalfe J,  
501 Dowdy D, Van Smit RZ, Dendukuri N, Pai M, Denking C. 2014. Reproducibility of  
502 interferon gamma (IFN- $\gamma$ ) release assays a systematic review. *Ann Am Thorac Soc*  
503 11:1267–1276.
- 504 22. FRASER CG. 2001. Biological variation: from principles to practice. Washington, DC.
- 505 23. Whitworth WC, Hamilton LR, Goodwin DJ, Barrera C, West KB, Racster L, Daniels  
506 LJ, Chuke SO, Campbell BH, Bohanon J, Jaffar AT, Drane W, Maserang D, Mazurek  
507 GH. 2012. Within-Subject Interlaboratory Variability of QuantiFERON-TB Gold In-  
508 Tube Tests. *PLoS One* <https://doi.org/10.1371/journal.pone.0043790>.
- 509 24. G. H. Mazurek , W. C. Whitworth DJG. 2012. Affect Of Blood Collection Time On  
510 QuantiFERON®-Tb Gold In-Tube Test Variability IMMUNODIAGNOSTICS FOR LATENT  
511 TUBERCULOSIS INFECTION AND TUBERCULOSIS.
- 512 25. Gaur RL, Pai M, Banaei N. 2013. Impact of blood volume, tube shaking, and  
513 incubation time on reproducibility of QuantiFERON-TB gold in-tube assay. *J Clin*  
514 *Microbiol* 51:3521–3526.

515

516

## 517 12 Table and figures Caption

518 **Figure 1: Description of implementation of IGRA/QFT®-Plus in the study.** The first step  
519 was to check if all equipment and reagents were available and in good condition. Then, the  
520 team was trained to perform the test following Good Clinical Laboratory Practices and  
521 according to the manufacturer’s recommendations.



522 **Figure 2: Two different conditions for IGRA/QFT®-Plus sample collection and**  
523 **processing in the study.** A) Setup A: utilized by Sites 1 and 2 and characterized by  
524 performing the collection and processing of samples in the same place, without a vehicle. B)  
525 Setup B: utilized by Sites 3, 4 and 5, characterized by performing the collection and  
526 processing of samples in distinct places, and transportation of the samples by vehicle.

527 **Figure 3: Frequencies of IGRA/QFT®-Plus results in each Setup and Site stratified by**  
528 **year of the study.** A) The sites are grouped by Setup A (purple rectangles, site 1 and 2) and  
529 Setup B (green rectangles, site 3, 4 and 5). B) Results stratified by site.

530 **Figure 4: Frequencies of conformities and non-conformities of samples in each Setup**  
531 **and Site stratified by year of the study.** A) The sites are grouped by Setup A (purple  
532 rectangles, site 1 and 2) and Setup B (green rectangles, site 3, 4 and 5). B) Results stratified  
533 by site.

534 **Figure 5: Number of occurrences of the non-conformity “Temperature deviation” in**  
535 **each Setup and Site stratified by year in period of study.** A) The sites are grouped by  
536 Setup A (purple rectangles, site 1 and 2) and Setup B (green rectangles, site 3, 4 and 5). B)  
537 Results stratified by site. Color of circles indicates the year of non-conformity register and the  
538 size is proportional to the number of occurrences.

539 **Figure 6: Dynamics of the temperature at the time of shipment and receipt of study**  
540 **samples, and the delta temperature variation over time in each Setup stratified by**  
541 **trimester and year during the study period.** A) Average Temperature (°C) of sending  
542 samples calculated by trimester and year in each setup. B) Average Temperature (°C) of  
543 receiving samples calculated by trimester and year in each setup. C) The difference between  
544 receiving and sending temperature ( $\Delta$ ) was calculated for each trimester and year in each  
545 setup. Purple lines indicate Setup A and green lines indicate Setup B. The light green block  
546 indicates the limit accepted by the IGRA test manufacturer as acceptable for the storage and  
547 handling of the samples (17-27°C).

548 **Figure 7: Correlation between delta temperature variation and delta time variation of**  
549 **study.** Purple dots indicate Setup A and green dots indicate Setup B.

550

551 **Table 1:** Time and temperature quality control measurements by year in period of study.  
552 \*Setup A: contains Site 1 and 2, characterized by performing the collection and processing of  
553 samples in the same place. Setup B: contains Site 3, 4 and 5. It is characterized by performing  
554 the collection and processing of samples in distinct place; #Data were compared between the  
555 setups using the Mann-Whitney U test. Bold and italic font indicates statistical significance.  
556 ¥The number of samples changes overtime for each Setup, as follow: 2016 (A = 190; B =  
557 173), 2017 (A = 366; B = 258), 2018 (A = 505; B = 471), 2019 (A = 570; B = 333). £Data are  
558 shown as median and interquartile range (IQR).

559

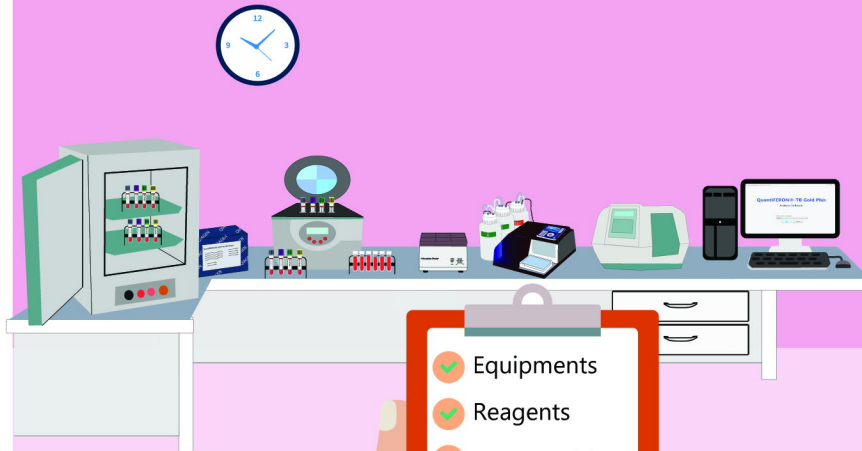
**Table 1:** Time and temperature quality control measurements by year in period of study.

Parameters	Year	Setup A*	Setup B	p-value <sup>#</sup>
Time between sending vs receiving, median [IQR] <sup>‡</sup>	2016 <sup>‡</sup>	55.8 [20.1-75.1]	140.0 [102.0-176.0]	<b>&lt; 0.001</b>
	2017	58.7 [22.2-82.8]	121.0 [83.5-155.0]	<b>&lt; 0.001</b>
	2018	61.8 [25.1-90.1]	89.0 [29.0-164.0]	<b>&lt; 0.001</b>
	2019	49.5 [20.1-66.1]	135.0 [96.0-171.0]	<b>&lt; 0.001</b>
Temperature °C (sending samples), median [IQR]	2016	19.6 [18.1-21.2]	17.8 [16.0-19.1]	<b>&lt; 0.001</b>
	2017	21.9 [19.6-24.1]	18.0 [16.0-19.5]	<b>&lt; 0.001</b>
	2018	21.5 [19.3-23.8]	18.3 [16.8-19.8]	<b>&lt; 0.001</b>
	2019	20.6 [19.0-22.2]	18.1 [16.6-19.2]	<b>&lt; 0.001</b>
Temperature °C (receiving samples), median [IQR]	2016	20.1 [18.8-21.4]	19.6 [17.9-21.6]	<b>&lt; 0.001</b>
	2017	22.1 [20.6-24.1]	20.7 [19.5-22.9]	<b>&lt; 0.001</b>
	2018	21.9 [20.0-23.9]	20.4 [18.6-22.9]	<b>&lt; 0.001</b>
	2019	20.7 [19.5-22.1]	20.5 [18.9-22.6]	<b>&lt; 0.001</b>
Delta Temperature °C (receiving x sending, median [IQR])	2016	0.54 [0.0-0.8]	1.82 [0.0-3.7]	<b>&lt; 0.001</b>
	2017	0.26 [0.0-0.1]	2.72 [1.2-4.1]	<b>&lt; 0.001</b>
	2018	0.37 [0.0-0.4]	2.06 [0.9-4.1]	<b>&lt; 0.001</b>
	2019	0.15 [0.0-0.2]	2.35 [1.1-4.3]	<b>&lt; 0.001</b>

\*Setup A: contains Site 1 and 2, characterized by performing the collection and processing of samples in the same place. Setup B: contains Site 3, 4 and 5. It is characterized by performing the collection and processing of samples in distinct place; <sup>#</sup>Data were compared between the setups using the Mann-Whitney U test. Bold and italic font indicates statistical significance. <sup>‡</sup>The number of samples changes overtime for each Setup, as follow: 2016 (A = 190; B = 173), 2017 (A = 366; B = 258), 2018 (A = 505; B = 471), 2019 (A = 570; B = 333). <sup>‡</sup>Data are shown as median and interquartile range (IQR).

# IMPLEMENTATION

## CHECKLIST



- ✓ Equipments
- ✓ Reagents
- ✓ Consumables
- ✓ QTF-Plus Tube Kit
- ✓ QTF-Plus ELISA Kit

## TRAINING



- \* Information and GCLP;
- \* Sample collection and transport;
- \* ELISA assay;
- \* Validation testing;

**A****Sample Collection**

- \* Tubes ID
- \* Venous puncture
- \* Shake tubes by inversion

**Routine****Shipping**

- \* Temperature box (17-27°C)
- \* Transportation time (1-16 hours)

**Laboratory assay**

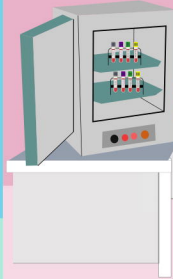
- \* Check samples
- \* Incubation time (16-24 hours in 37°)
- \* Sample aliquot
- \* ELISA assay and report

**B****Sample Collection**

- \* Tubes ID
- \* Venous puncture
- \* Shake tubes by inversion

**Routine****Shipping**

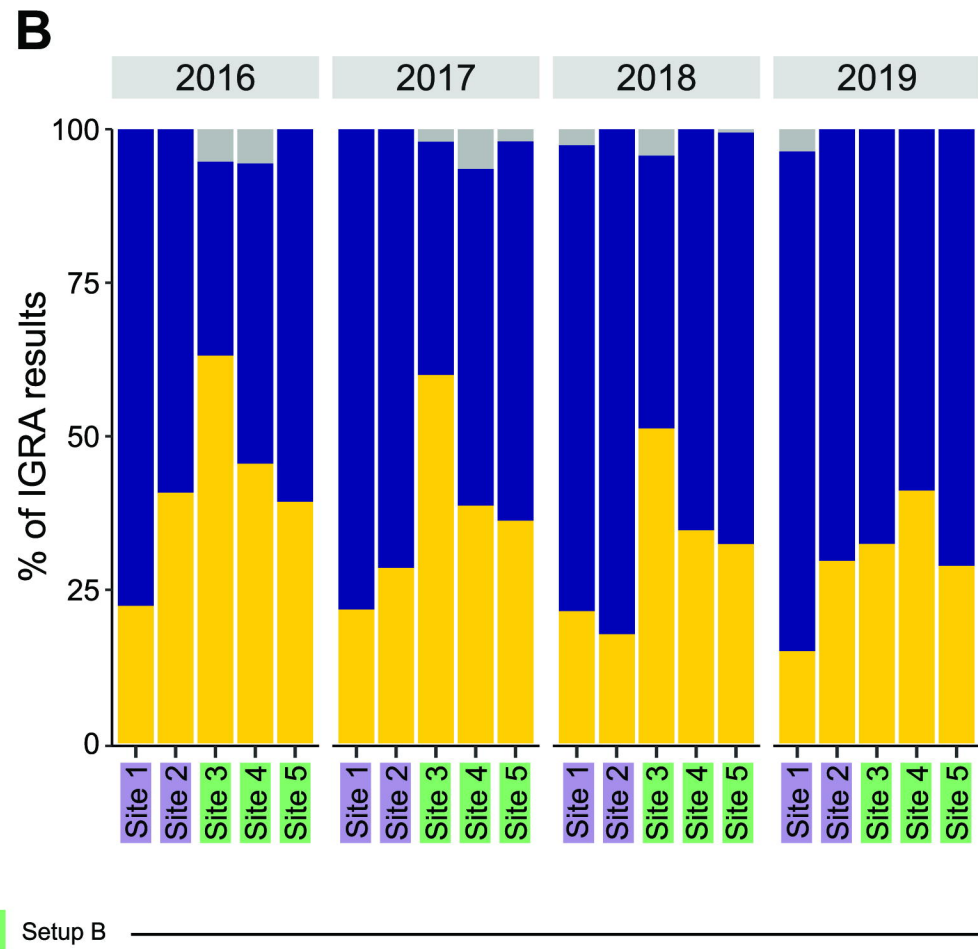
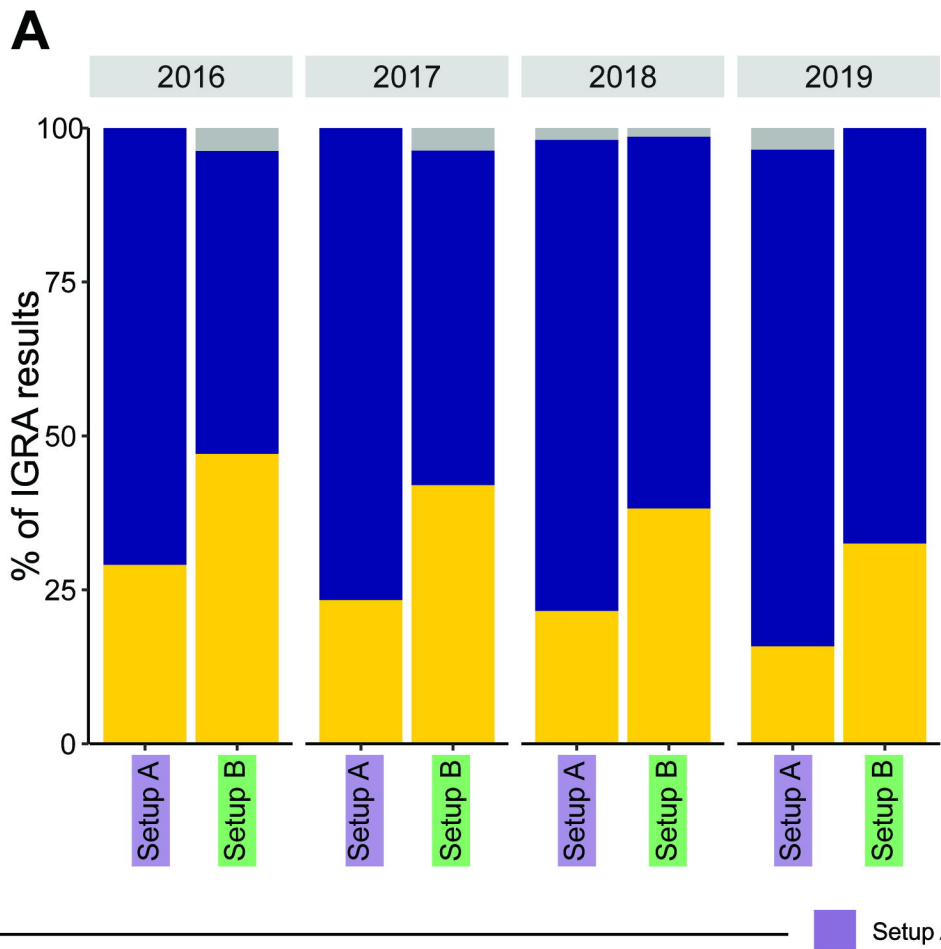
- \* Temperature box (17-27°C)
- \* Transportation time (1-16 hours)

**Laboratory assay**

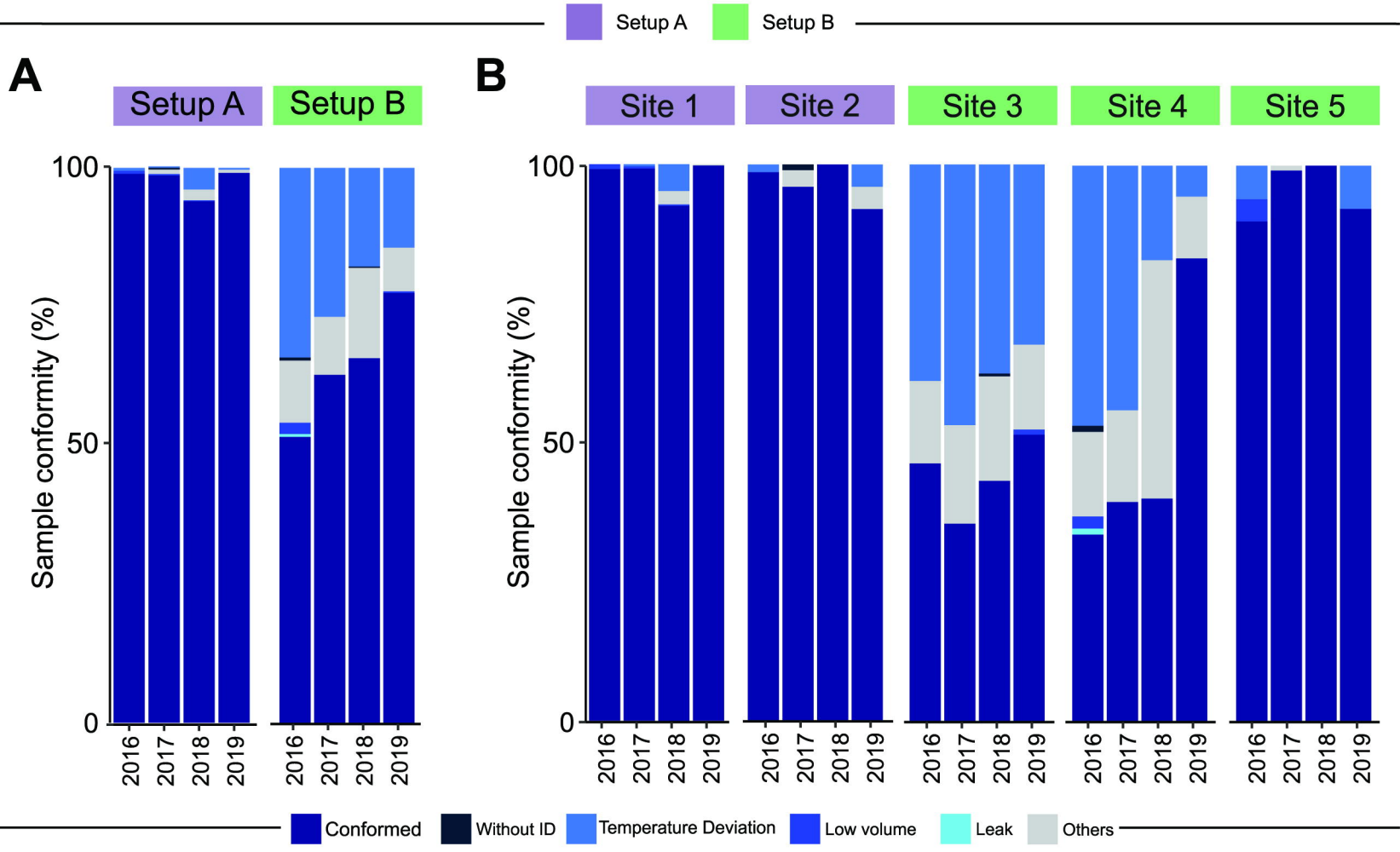
- \* Check samples
- \* Incubation time (16-24 hours in 37°)
- \* Sample aliquot
- \* ELISA assay and report



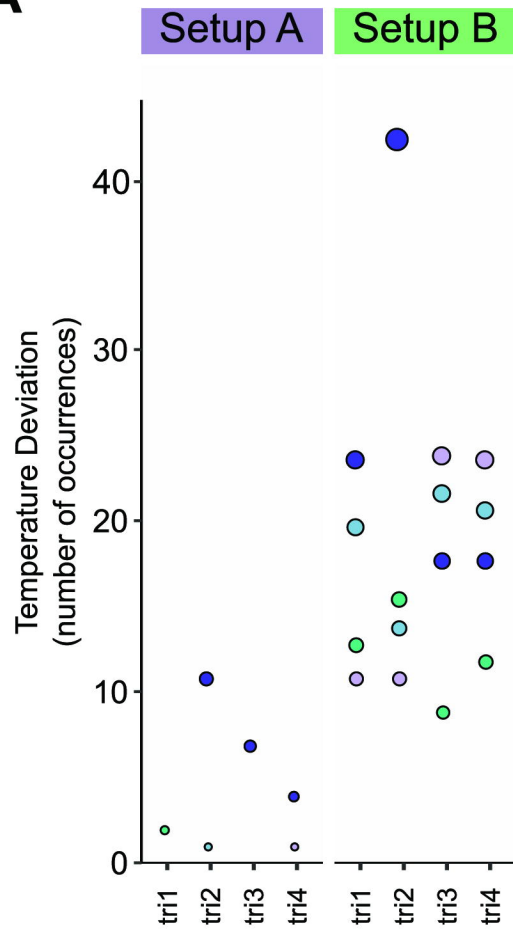
Indeterminate Negative Positive



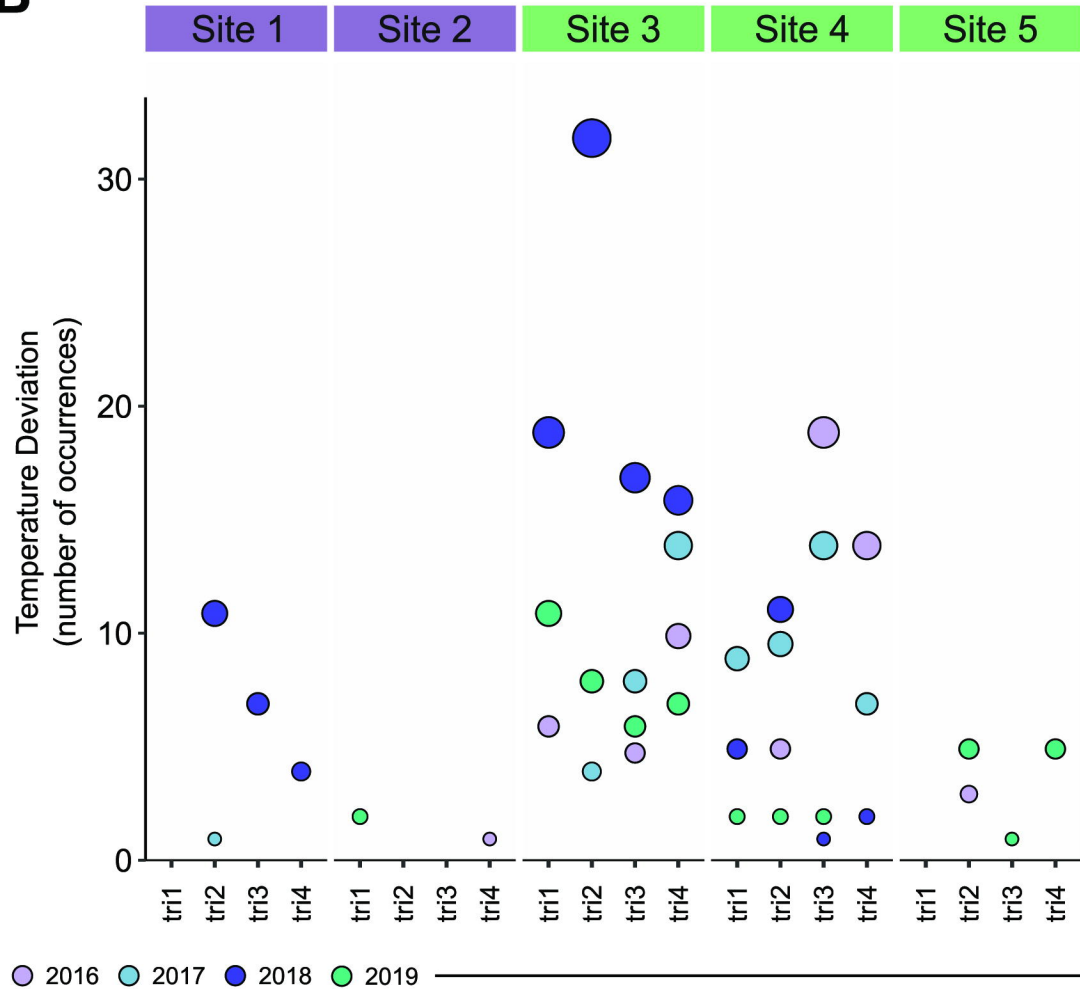




**A**

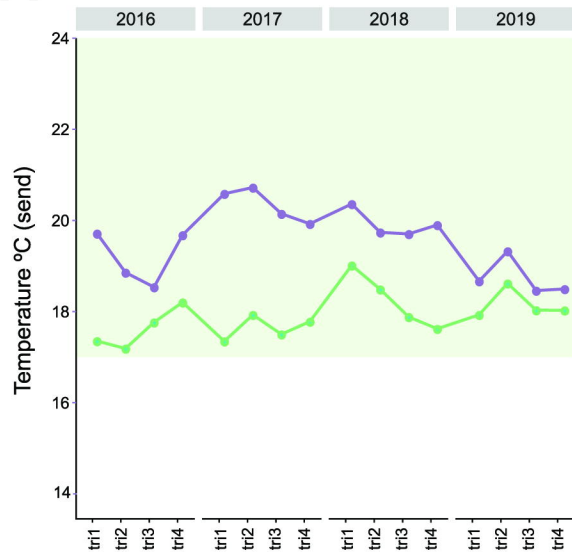


**B**

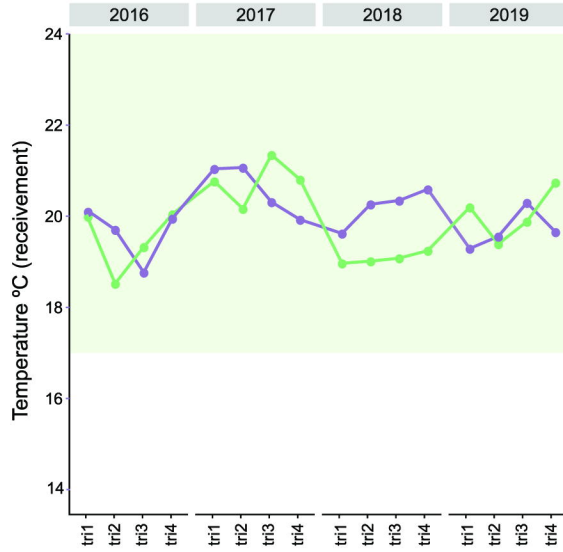


Setup A Setup B

**A**



**B**



**C**

