

Immune enhancement to prevent infected pancreatic necrosis: A double-blind randomized controlled trial

Short Title:

Immune enhancement in necrotizing pancreatitis

Lu Ke^{1,25,a}, PhD; Jing Zhou^{1,2,a}, MD; Wenjian Mao^{2,a}, MD; Tao Chen³, PhD; Yin Zhu⁴, PhD; Xinting Pan⁵, PhD; Hong Mei⁶, PhD; Vikesh Singh⁷, PhD; James Buxbaum⁸, PhD; Gordon Doig⁹, PhD; Chengjian He¹⁰, PhD; Weili Gu¹¹, PhD; Weihua Lu¹², PhD; Shumin Tu¹³, PhD; Haibin Ni¹⁴, PhD; Guoxiu Zhang¹⁵, PhD; Xiangyang Zhao¹⁶, PhD; Junli Sun¹⁷, PhD; Weiwei Chen¹⁸, PhD; Jingchun Song¹⁹, PhD; Min Shao²⁰, PhD; Jianfeng Tu²¹, PhD; Liang Xia⁴, MD; Wenhua He⁴, MD; Qingyun Zhu⁵, MD; Kang Li⁶, MD; Hongyi Yao¹⁰, MD; Jingyi Wu¹², MD; Long Fu¹³, MD; Wendi Jiang¹, MD; He Zhang²², MD; Jiajia Lin¹, MD; Baiqiang Li¹, PhD; Zhihui Tong^{1,*}, PhD; John Windsor²³, PhD; Yuxiu Liu^{1,24}, PhD; Weiqin Li^{1,2,25*}, PhD; Chinese Acute Pancreatitis Clinical Trials Group (CAPCTG)

1 Department of Critical Care Medicine, Jinling Hospital, Medical School of Nanjing University, Nanjing 210002, Jiangsu, China

2 Department of Critical Care Medicine, Jinling Hospital, Nanjing Medical University, Nanjing 210010, Jiangsu, China

3 Department of Public Health, Policy and Systems, Institute of Population Health, Whelan Building, Quadrangle, The University of Liverpool, Liverpool, L69 3GB, UK

4 Pancreatic Disease Center, Department of Gastroenterology, The First Affiliated Hospital of Nanchang University, Nanchang 330006, Jiangxi, China

5 Department of Emergency Intensive Care Unit, The Affiliated Hospital of Qingdao University, Qingdao 266000, Shandong, China

6 Department of Critical Care Medicine, The Affiliated Hospital of Zunyi Medical University, Zunyi 536000, Guizhou, China

7 Pancreatitis Center, Division of Gastroenterology, Johns Hopkins Medical Institutions, Baltimore, MD, USA

-
- 8 Associate Professor of Medicine (Clinical Scholar), Division of Gastroenterology, Department of Medicine, Keck School of Medicine of the University of Southern California, USA
- 9 Northern Clinical School, Royal, North Shore Hospital, University of Sydney, Sydney, Australia
- 10 Department of Critical Care Medicine, the Affiliated Nanhua Hospital, University of South China, Hengyang 421002, Hunan, China
- 11 Department of Critical Care Medicine, Affiliated Hospital 2 of Nantong University, Nantong 226000, Jiangsu, China
- 12 Department of Intensive Care Unit, The First Affiliated Hospital of Wannan Medical College, Wuhu 241001, Anhui, China
- 13 Department of Emergency Medicine, Shangqiu First People's Hospital, Shangqiu 476000, Henan, China
- 14 Department of Emergency Medicine, Jiangsu Provincial Hospital of Integrated Chinese and Western Medicine, Nanjing 210010, Jiangsu, China
- 15 Department of Emergency Medicine, The First Affiliated Hospital and College of Clinical Medicine of Henan University of Science and Technology, Luoyang 471003, Henan, China
- 16 Department of Intensive Care Unit, Qilu Hospital of Shandong University, Qingdao 266000, Shandong, China
- 17 Department of Intensive Care Unit, Luoyang Central Hospital, Zhengzhou University, Luoyang 471100, Henan, China
- 18 Department of Gastroenterology, Clinical Medical College, Yangzhou University, Yangzhou, Jiangsu, China
- 19 Department of Critical Care Medicine, 94th Hospital of PLA, Nanchang 330006, Jiangxi, China
- 20 Department of Intensive Care Unit, The First Affiliated Hospital of Anhui Medical University, Hefei 230022, Anhui, China
- 21 Department of Emergency Medicine, Zhejiang Provincial People's Hospital, Hangzhou 310014, Zhejiang Province, China

22 Department of Critical Care Medicine, Jinling Hospital, Medical School of Southeast University, Nanjing 210002, Jiangsu, China

23 Surgical And Translational Research Centre, Faculty of Medical and Health Sciences, University of Auckland, Auckland, 1142, New Zealand

24 Department of Medical Statistics, Jinling Hospital, Medical School of Nanjing University, Nanjing 210002, Jiangsu, China

25 National Institute of Healthcare Data Science, Nanjing University, Nanjing 210010, Jiangsu, China

*Correspondence to: Zhihui Tong & Weiqin Li

Telephone: +8613182810702 E-mail: ctgchina@medbit.cn

a These authors contributed equally to this work

Funding: This study is funded by SBE2016750187 of Science and technology project, Jiangsu Province, China, partly by SciClone Pharmaceuticals Holding Limited.

Conflict of Interest Disclosures:

Dr. Weiqin Li reports consultancy fees and grants from SciClone Pharmaceuticals. Dr. Zhihui Tong reports speaker fees from SciClone Pharmaceuticals. Dr. Lu Ke reports speaker fees from SciClone Pharmaceuticals. The other authors have no relevant conflict of interest to declare. Dr. Vikesh Singh reports consultant fees and grants Abbvie, medical advisory board participant for Envara, and grants from Theraly and Orgenesis.

Authors Contributions:

Study concept and design: Weiqin Li, John Windsor, Yuxiu Liu, Zhihui Tong, Lu Ke;

Acquisition of data: Weiqin Li, Zhihui Tong, Lu Ke, Jing Zhou, Wenjian Mao, Wendi Jiang, He Zhang, Yin Zhu, Xinting Pan, Hong Mei, Chengjian He, Weili Gu, Weihua Lu, Shumin Tu, Haibin Ni, Guoxiu Zhang, Xiangyang Zhao, Junli Sun, Weiwei Chen, Jingchun Song, Min Shao, Jianfeng Tu, Liang Xia, Wenhua He, Qingyun Zhu, Kang Li, Hongyi Yao, Jingyi Wu, Long Fu; **Obtained funding:** Weiqin Li, Zhihui Tong;

Technical support: Yuxiu Liu, Wenjian Mao; **Methodology support:** Yuxiu Liu, Tao Chen, Gordon Doig; **Study supervision:** Weiqin Li, Zihui Tong, Lu Ke; **Statistical analysis:** Tao Chen, Gordon Doig; **Analysis and interpretation of data:** Tao Chen, Lu Ke, Jing Zhou, Wenjian Mao, Jiajia Lin; **Drafting and Revision of Manuscript:** All

Abbreviations:

ANP: acute necrotizing pancreatitis; AP: acute pancreatitis; CRP: C-reactive protein; GLM: generalized linear model; IPN: infected pancreatic necrosis; ITT: intention-to-treat; mHLA-DR: monocyte human leukocyte antigen-DR; PP: per-protocol; RAC: Revised Atlanta Classification; $T\alpha 1$: Thymosin alpha 1

Acknowledgment:

This study was funded by SBE2016750187 of Science and technology project, Jiangsu Province, China, partly by SciClone Pharmaceuticals Holding Limited. The funders were not involved in the trial's design, data collection, interpretation, or manuscript preparation.

We acknowledge the contribution of Mengjie Lu, Gang Li, Bo Ye, Yan Chen, Zhenping Chen, Youdong Wan, Miao Chen, Qingbo Zeng, Wei Zhao, Lening Ren, Dahuan Li, Qingcheng Xu, Keke Xin, Bing Xue, Hongguo Yang, Dongsheng Zhao, Feng Zhou, Zigui Zhu in the development and execution of this study.

Abstract

BACKGROUND&AIMS

Infected pancreatic necrosis (IPN) is a highly morbid complication of acute pancreatitis (AP). Since there is evidence of immunosuppression in the early phase of AP, immune enhancement using Thymosin alpha 1 (T α 1), which stimulates both innate and adaptive immunity, may be a therapeutic strategy to prevent IPN. Our aim was to assess the efficacy of early T α 1 treatment on the development of IPN.

METHODS

We conducted a multicenter, randomized, double-blind, placebo-controlled trial in patients with predicted severe acute necrotizing pancreatitis (ANP). ANP patients with an APACHE II score \geq 8 admitted within seven days of the advent of symptoms were considered eligible. Enrolled patients were assigned to receive a subcutaneous injection of T α 1 1.6 mg, every 12 hours for the first 7 days and 1.6 mg once a day for the subsequent 7 days or matching placebo (normal saline). The primary outcome was the development of IPN during the index admission.

RESULTS

From Mar 2017 through Dec 2020, 508 patients were randomized at 16 hospitals, of whom 254 were assigned to receive T α 1 and 254 placebo. During the index admission, 40/254 (15.7%) patients in the T α 1 group developed IPN compared with 46/254 patients (18.1%) in the placebo group (difference -2.4% [95%CI -7.4% to 5.0%]; p=0.47). The results were similar in four predefined subgroups. There was no difference in other major complications, including new-onset organ failure (10.6% vs. 15.0%; p=0.15), bleeding (6.3% vs. 3.5%; p=0.15), and gastrointestinal fistula (2.0% vs. 2.4%; p=0.75) during the index admission.

CONCLUSIONS

The immune-enhancing T α 1 treatment of patients with predicted severe ANP did not reduce the incidence of IPN during the index admission.

Trial registration

Clinicaltrials.gov registry: NCT02473406.

Keywords: acute pancreatitis, immunosuppression, thymosin, pancreatic necrosis, infection

Introduction

The annual global incidence of acute pancreatitis (AP) is estimated to be 34 per 100,000 individuals¹. A smaller subgroup of patients with AP(5-10%) develop acute necrotizing pancreatitis (ANP)² and can experience a more prolonged disease course and increased morbidity and mortality, especially if infected pancreatic necrosis (IPN) develops^{3, 4}. The bacteria responsible for IPN are often translocated from the gastrointestinal tract and reach the pancreas through several different transmission routes, including hematogenous, lymphatic, and transcoelomic^{5,6}.

Attempts to reduce the risk of infection in ANP have included the use of prophylactic antibiotics⁷ and enteral probiotics⁸. The former is no longer recommended because of issues like antibiotic resistance, methodological quality in previous studies, and fungal superinfection^{9, 10}. The latter is controversial, as a prominent randomized controlled trial found an increased risk of gastrointestinal necrosis associated with probiotic treatment⁸. Given that there is evidence of immunosuppression in the early phase of AP¹¹⁻¹⁴, a theoretical strategy to reduce the risk of IPN is to boost the host defense (immune enhancement) against bacterial infection¹⁵.

Thymosin alpha 1 (T α 1), a polypeptide hormone isolated from the thymus, stimulates both innate and adaptive immunity¹⁶. In a pilot study of patients with AP, T α 1 was effective in reducing the risk of developing IPN¹⁷. Based on this preliminary data, we conducted a multicenter randomized clinical trial to determine the efficacy of early T α 1 treatment on the development of IPN.

Methods

Trial design and oversight

This is a multicenter, randomized, double-blind, placebo-controlled, parallel-group trial to assess the efficacy of T α 1 in addition to standard care on the development of IPN in patients with predicted severe ANP. The trial was approved by the local hospital ethics committees of all the participating sites and registered on the ClinicalTrials.gov Registry (NCT02473406) before enrollment commenced. The trial

protocol was published in 2020¹⁸. This study was funded by the Science and Technology Project of Jiangsu Province of China (no. SBE2016750187) and partly supported by SciClone Pharmaceuticals Holding Limited, which provided trial drugs and support for meetings during the study period. The funders were not involved in the trial's design, data collection, interpretation, or manuscript preparation.

Study population

Patients diagnosed with AP aged 18 to 70 years and with an APACHE II score ≥ 8 and CT severity score¹⁹ ≥ 5 admitted to any of the participating sites within seven days of the onset of abdominal pain were eligible for inclusion. The diagnosis of AP was based on the Revised Atlanta Classification (RAC) criteria². Patients were excluded if they were pregnant, had a history of chronic pancreatitis, had underlying malignancy, received treatment for pancreatic necrosis prior to enrollment, had a known history of severe cardiovascular, respiratory, renal or hepatic diseases or had pre-existing immune disorders such as AIDS. Detailed inclusion and exclusion criteria are provided in the published protocol¹⁸.

At each site, informed consent was obtained from the patients or their next of kin before randomization. Patients were enrolled from Mar 18th, 2017, to Dec 10th, 2020. Follow-up was completed on Mar 10th, 2021.

Randomization, masking and interventions

Eligible participants were randomized to either the treatment group or the placebo group in a 1:1 ratio. The randomization was stratified by participating sites with a block size of four. Patients were assigned to receive a subcutaneous injection of Tα1 (SciClone Pharmaceutical Co., Ltd, Hongkong) 1.6 mg, every 12 hours for the first 7 days and 1.6 mg once a day for the following 7 days or matching placebo (normal saline, Chengdu Tongde Pharmaceutical Co., Ltd, Chengdu) during the same period. The trial drug was administered for a maximum of 14 days, or until hospital discharge or death, whichever occurred first.

Participants, treating physicians, and investigators were blinded to the treatment

allocation to minimize potential bias. The trial statistician was also blinded when developing the statistical programs. Tα1 and placebo were supplied in identically labeled individual vials. All other aspects of the patients' care were provided on the basis of the international guidelines²⁰. The details for the management of AP are in the published protocol¹⁸.

Data collection

A web-based database (Unimed Scientific Inc., Wuxi, China) was developed for data collection (accessed at capctg.medbit.cn). Before enrollment, a start-up meeting for data entry and storage training was organized at each participating site to ensure high-quality data collection.

Trial outcomes

The primary outcome was the development of IPN during the index admission. The diagnosis of IPN was made when one or more of the following criteria were present: gas bubbles within pancreatic and/or peripancreatic necrosis on CT; a positive culture from pancreatic and/or peripancreatic necrosis obtained by fine-needle aspiration, drainage, or necrosectomy². Secondary clinical outcomes include IPN at 90 days after randomization and new-onset organ failure as defined by the Revised Atlanta Classification² as well as mortality, bleeding requiring intervention, gastrointestinal fistula requiring intervention, positive blood culture, and pancreatic fistula during the index admission. Secondary laboratory outcomes include C-reactive protein (CRP), monocyte human leukocyte antigen-DR (mHLA-DR), and lymphocyte count at day 7 and day 14 after randomization and positive blood cultures. The details and definitions of all outcomes are provided in the published protocol¹⁸.

Statistical analysis

The incidence of IPN during the index admission in our study population was approximately 25% from our previous studies^{21,22}. A sample size of 520 patients was conservatively estimated to provide 80% power at a 2-sided alpha of 5% to

demonstrate an absolute risk reduction of 10% in IPN during the index admission (25% in the placebo group vs. 15% in the Tα1 group) after adding 4% more patients to account for possible dropouts like withdrawal of consent (PASS V.11, NCSS software, Kaysville, USA)¹⁷.

Primary analyses were based on the intention-to-treat (ITT) population, and secondary sensitive analyses were done on the per-protocol (PP) population for the primary outcome and key secondary outcomes. Continuous data are reported as means and standard deviations or as medians and interquartile ranges as appropriate, depending on their normality. Categorical data are expressed as numbers and percentages.

The generalized linear model (GLM) was employed to compare group differences in the primary outcome with site as a covariate, and the risk difference, together with its 95% confidence interval, were calculated. Adjusted analyses with prespecified covariates were also performed. The GLM was also employed for analyses of secondary outcomes with treatment as the single predictor. Kaplan-Meier curves were used to compare the cumulative incidence of IPN to 90 days after randomization tested by log-rank test. Four subgroups were predefined for the evaluation of the incidence of IPN during the index admission and 90 days after randomization: the severity of AP (severe and non-severe²), age (>60 and <60 years old), aetiologies of AP (biliary and non-biliary) and extent of pancreatic necrosis (>50% and ≤50%).

Analyses were conducted using SAS 9.4[®]. Statistical tests will be two-sided, and p values <0.05 will be deemed as significant. All authors had access to the study data and had reviewed and approved the final manuscript.

Results

Results of recruitment and baseline characteristics

During the study period, 3,569 AP patients were assessed for eligibility, of whom 508 were enrolled in the trial at 16 hospitals in China. Among those 508 randomized patients, 254 were assigned to receive Tα1 and 254 placebo. The most common reasons for exclusion were admission >7 days before evaluation and APACHE score

<8. Eleven patients in the Tα1 group and eight patients in the placebo group withdraw consent during treatment but did not refuse follow-up and data usage (**Figure 1**). Three patients in the placebo group stopped research intervention midway due to adverse reactions.

Baseline demographics and characteristics were not significantly different between the Tα1 and placebo groups (**Table 1**). In both groups, hypertriglyceridemia was the leading cause of AP, accounting for approximately half of the cases (48.8% vs. 50%).

Primary outcome and secondary outcomes

During the index admission, 40/254 (15.7%) patients in the Tα1 group developed IPN compared with 46/254 patients (18.1%) patients in the placebo group (difference -2.4% [95%CI -7.4% to 5.0%]; p=0.47). At 90 days after randomization, 57/254 (22.4%) patients in the Tα1 group developed IPN compared with 65/254 patients (25.6%) in the placebo group (difference -3.3% [95%CI -9.2% to 4.8%]; p=0.39). There was no difference in mortality between groups either within the index admission or at 90 days after randomization (**Table 2**). The Kaplan-Meier curves for the cumulative incidence of IPN until 90 days after randomization are shown in **Figure 2**. There was no significant difference in the probability of developing IPN between the Tα1 and placebo groups (Log-Rank P=0.39).

There was no difference in other major complications, including new-onset organ failure (10.6% vs. 15.0%; difference -4.3% [95%CI -8.2% to 1.9%]; p=0.15), bleeding (6.3% vs. 3.5%; difference 2.8 [95%CI -0.7 to 10.5]; p=0.15), and gastrointestinal fistula (2.0% vs. 2.4%; difference -0.4% [95%CI -1.8% to 3.9%]; p=0.75) during the index admission. Moreover, there were no significant differences in length of ICU or hospital stay, requirement for catheter drainage and minimally-invasive debridement or open surgery between the patients in the Tα1 and placebo groups (**Table 2**).

Subgroup analyses

There was no significant heterogeneity in the effect of Tα1 on the incidence of IPN

during the index admission and 90 days after randomization in any of the four predefined subgroups (**Figure 3**).

Adverse events

Adverse events occurred in 21 patients in the Tα1 group and 19 patients in the placebo group (8.3 % vs. 7.5 %, P=0.742). The most common adverse event was venous thrombosis which occurred in 6 patients (2.4%) in the Tα1 group vs. 5 (2.0%) in the placebo group.

Discussion

In this multicenter, double-blind, placebo-controlled, randomized trial, immune enhancement using Tα1 did not significantly reduce the incidence of IPN during the index admission or within 90 days of randomization in patients with ANP. Given the range of severity of AP², this study was designed to select more severe patients based on the APACHE II score at enrollment²³. However, we failed to show a difference in the primary outcome.

Our results are not consistent with the results from an experimental animal study¹⁷ and the pilot clinical study²⁴. There are several possible explanations. First, current animal models can not recapitulate all aspects of human AP, especially for a complication such as IPN, which often occurs several weeks after admission^{25, 26}. Second, the pilot study recruited only 24 patients from a single center, making its findings vulnerable to type I error. Third, the dose regimen in the present trial is different from the pilot one with a longer duration of drug administration (one week in the pilot versus two weeks in the present) and lower initial dose (6.4mg per day in the pilot versus 3.2 mg per day in the present). There were two time-course considerations in designing the dose regimen: (1) infection mostly occurs beyond the second week after disease onset^{3, 27}, and a two-week regimen should cover the period interval better when prevention is possible; (2) immunosuppression typically develops early in the first week and usually slowly recovers during the second week¹², which is the reason for prescribing half the dose during the second week of treatment. A similar

step-wise dose reduction was used in a previous study testing T α 1 in sepsis²⁸, showing that T α 1 could reduce 28-day mortality. The changes for initial dose were made because of concerns about the safety of the original dose regimen.

There is evidence to support a shifting balance between the systemic pro-inflammatory response and the compensatory anti-inflammatory response over the early course of AP^{13, 29}. It was considered that the pro-inflammatory response occurs in the first few days to weeks and that the compensatory anti-inflammatory response occurs later. However, analyses in patients with sepsis and AP suggest that these responses can also run in parallel and that there is an association between early-onset immunosuppression and poor outcomes in AP^{30, 31}. Previous trials investigating immunomodulatory therapy to block the early pro-inflammatory response have not been convincing³², and this includes drugs like lexicapant^{33, 34} and octreotide³⁵. In patients with severe COVID-19, observational studies showed that T α 1 attenuated lung injury and decreased mortality^{36, 37}. Despite the theoretical benefits of immune-enhancement with T α 1 and the encouraging results from the pilot study¹⁷, T α 1 did not reduce the incidence of IPN or improve any of the clinical outcomes in this trial.

In the subgroup analyses, larger treatment effects were seen in patients with a greater extent of pancreatic necrosis (>50%) and those aged more than 60 years old, although not statistically significant. We should interpret all the subgroup results with caution. First, the power was not enough to detect the differences among treatments. Second, the definition of necrosis is relatively subject based on a single CT scan. Third, we excluded patients aged more than 70 years old given that age > or =70 has been proved to impact the clinical outcomes³⁸, which makes the study subgroup for elderly patients even smaller.

In line with the excellent safety profile reported in previous studies, T α 1 showed satisfactory safety performance in this trial. Three patients discontinued treatment due to adverse reactions (one erythra and two unexplainable fever) but received the placebo.

The study has several limitations. The first is that the incidence of IPN may have

been affected by the use of antibiotics, especially therapeutic, because this was not standardized but left to the clinical team to decide. The second is that there were problems (failed lab quality control) with the measurement of the monocyte human leukocyte antigen-DR (for monitoring drug effects) in half of the study subjects, and this could explain the negative result for this parameter. The third is that APACHE II misclassifies the severity of AP in almost a third of patients, which could also have contributed to the negative result³⁹. And lastly, the timing of treatment might have been too late. The current trial included patients up to one week after the advent of symptoms, which may increase the heterogeneity of the study population. Enrollment of a greater range of patients earlier in the disease course may have provided a better estimation of the agent's effects. In addition to the timing of treatment, the appropriate duration of therapy is unclear.

In conclusion, the immune-enhancing T α 1 treatment of patients with predicted severe ANP (APACHE II \geq 8 at enrolment) did not significantly reduce the incidence of IPN during the index admission compared with placebo. Future trials seeking to investigate this approach will need to determine the best way to select patients and decide on the most effective dose and duration of T α 1 treatment.

1. **Xiao AY**, Tan ML, Wu LM, et al. Global incidence and mortality of pancreatic diseases: a systematic review, meta-analysis, and meta-regression of population-based cohort studies. *Lancet Gastroenterol Hepatol* 2016;1:45-55.
2. **Banks PA**, Bollen TL, Dervenis C, et al. Classification of acute pancreatitis--2012: revision of the Atlanta classification and definitions by international consensus. *Gut* 2013;62:102-11.
3. **Trikudanathan G, Wolbrink DRJ**, van Santvoort HC, et al. Current Concepts in Severe Acute and Necrotizing Pancreatitis: An Evidence-Based Approach. *Gastroenterology* 2019;156:1994-2007 e3.
4. **Schepers NJ**, Bakker OJ, Besselink MG, et al. Impact of characteristics of organ failure and infected necrosis on mortality in necrotising pancreatitis. *Gut* 2019;68:1044-1051.
5. **Mowbray NG**, Ben-Ismaeil B, Hammouda M, et al. The microbiology of infected pancreatic necrosis. *Hepatobiliary Pancreat Dis Int* 2018;17:456-460.
6. **Mittal A**, Phillips AR, Middleditch M, et al. The proteome of mesenteric lymph during acute pancreatitis and implications for treatment. *JOP* 2009;10:130-42.
7. **Wittau M**, Mayer B, Scheele J, et al. Systematic review and meta-analysis of antibiotic prophylaxis in severe acute pancreatitis. *Scand J Gastroenterol* 2011;46:261-70.
8. **Besselink MG**, van Santvoort HC, Buskens E, et al. Probiotic prophylaxis in predicted severe acute pancreatitis: a randomised, double-blind, placebo-controlled trial. *Lancet* 2008;371:651-9.
9. **Lim CL**, Lee W, Liew YX, et al. Role of antibiotic prophylaxis in necrotizing pancreatitis: a meta-analysis. *J Gastrointest Surg* 2015;19:480-91.
10. **de Vries AC**, Besselink MG, Buskens E, et al. Randomized controlled trials of antibiotic prophylaxis in severe acute pancreatitis: relationship between methodological quality and outcome. *Pancreatology* 2007;7:531-8.
11. **Ueda T**, Takeyama Y, Yasuda T, et al. Immunosuppression in patients with severe acute pancreatitis. *J Gastroenterol* 2006;41:779-84.
12. **Yu WK**, Li WQ, Li N, et al. Mononuclear histocompatibility leukocyte antigen-DR expression in the early phase of acute pancreatitis. *Pancreatology* 2004;4:233-43.
13. **Pan T, Zhou T**, Li L, et al. Monocyte programmed death ligand-1 expression is an early marker for predicting infectious complications in acute pancreatitis. *Crit Care* 2017;21:186.
14. **Li J, Yang WJ, Huang LM**, et al. Immunomodulatory therapies for acute pancreatitis. *World J Gastroenterol* 2014;20:16935-47.
15. **Hotchkiss RS**, Monneret G, Payen D. Sepsis-induced immunosuppression: from cellular dysfunctions to immunotherapy. *Nat Rev Immunol* 2013;13:862-74.
16. **Garaci E**. Thymosin alpha1: a historical overview. *Ann N Y Acad Sci* 2007;1112:14-20.
17. **Wang X**, Li W, Niu C, et al. Thymosin alpha 1 is associated with improved cellular immunity and reduced infection rate in severe acute pancreatitis patients in a double-blind randomized control study. *Inflammation* 2011;34:198-202.
18. **Zhou J, Mao W**, Ke L, et al. Thymosin alpha 1 in the prevention of infected pancreatic necrosis following acute necrotising pancreatitis (TRACE trial): protocol of a multicentre, randomised, double-blind, placebo-controlled, parallel-group trial. *BMJ Open* 2020;10:e037231.
19. **Balthazar EJ**. Acute pancreatitis: assessment of severity with clinical and CT evaluation. *Radiology* 2002;223:603-13.

20. **Working Group IAPAAPAG.** IAP/APA evidence-based guidelines for the management of acute pancreatitis. *Pancreatology* 2013;13:e1-15.
21. **Sun JK, Li WQ, Ni HB, et al.** A modified gastrointestinal failure score for patients with severe acute pancreatitis. *Surg Today* 2013;43:506-13.
22. **Ke L, Ni HB, Tong ZH, et al.** D-dimer as a marker of severity in patients with severe acute pancreatitis. *J Hepatobiliary Pancreat Sci* 2012;19:259-65.
23. **Bradley EL, 3rd.** A clinically based classification system for acute pancreatitis. Summary of the International Symposium on Acute Pancreatitis, Atlanta, Ga, September 11 through 13, 1992. *Arch Surg* 1993;128:586-90.
24. **Wang X, Zeng X, Yang B, et al.** Efficacy of thymosin alpha1 and interferon alpha for the treatment of severe acute pancreatitis in a rat model. *Mol Med Rep* 2015;12:6775-81.
25. **Xue J, Sharma V, Habtezion A.** Immune cells and immune-based therapy in pancreatitis. *Immunol Res* 2014;58:378-86.
26. **Gorelick FS, Lerch MM.** Do Animal Models of Acute Pancreatitis Reproduce Human Disease? *Cell Mol Gastroenterol Hepatol* 2017;4:251-262.
27. **Garg PK, Madan K, Pande GK, et al.** Association of extent and infection of pancreatic necrosis with organ failure and death in acute necrotizing pancreatitis. *Clin Gastroenterol Hepatol* 2005;3:159-66.
28. **Wu J, Zhou L, Liu J, et al.** The efficacy of thymosin alpha 1 for severe sepsis (ETASS): a multicenter, single-blind, randomized and controlled trial. *Crit Care* 2013;17:R8.
29. **Minkov GA, Yovtchev YP, Halacheva KS.** Increased Circulating CD4+CD25+CD127^{low}/neg Regulatory T-cells as a Prognostic Biomarker in Acute Pancreatitis. *Pancreas* 2017;46:1003-1010.
30. **Novotny AR, Reim D, Assfalg V, et al.** Mixed antagonist response and sepsis severity-dependent dysbalance of pro- and anti-inflammatory responses at the onset of postoperative sepsis. *Immunobiology* 2012;217:616-21.
31. **Simovic MO, Bonham MJ, Abu-Zidan FM, et al.** Anti-inflammatory cytokine response and clinical outcome in acute pancreatitis. *Crit Care Med* 1999;27:2662-5.
32. **Munir F, Jamshed MB, Shahid N, et al.** Advances in immunomodulatory therapy for severe acute pancreatitis. *Immunol Lett* 2020;217:72-76.
33. **Johnson CD, Kingsnorth AN, Imrie CW, et al.** Double blind, randomised, placebo controlled study of a platelet activating factor antagonist, lexipafant, in the treatment and prevention of organ failure in predicted severe acute pancreatitis. *Gut* 2001;48:62-9.
34. **Abu-Zidan FM, Windsor JA.** Lexipafant and acute pancreatitis: a critical appraisal of the clinical trials. *Eur J Surg* 2002;168:215-9.
35. **Wang R, Yang F, Wu H, et al.** High-dose versus low-dose octreotide in the treatment of acute pancreatitis: a randomized controlled trial. *Peptides* 2013;40:57-64.
36. **Liu Y, Pan Y, Hu Z, et al.** Thymosin Alpha 1 Reduces the Mortality of Severe Coronavirus Disease 2019 by Restoration of Lymphocytopenia and Reversion of Exhausted T Cells. *Clin Infect Dis* 2020;71:2150-2157.
37. **Wu M, Ji JJ, Zhong L, et al.** Thymosin alpha1 therapy in critically ill patients with COVID-19: A multicenter retrospective cohort study. *Int Immunopharmacol* 2020;88:106873.
38. **Gardner TB, Vege SS, Chari ST, et al.** The effect of age on hospital outcomes in severe acute pancreatitis. *Pancreatology* 2008;8:265-70.

39. **Gomatos IP**, Xiaodong X, Ghaneh P, et al. Prognostic markers in acute pancreatitis. *Expert Rev Mol Diagn* 2014;14:333-46.

(Author names in bold designate shared co-first authorship)

Figure legends

Figure 1 : Enrollment, randomization and follow-up of patients in the TRACE trial.

TRACE denotes Thymosin α 1 in Prevention of Infected Pancreatic Necrosis Following Acute Necrotizing Pancreatitis. APACHE II denotes acute physiology and chronic health evaluation II. CTSI denotes compute tomography severity index. ITT denotes intention to treat. T α 1 denotes Thymosin α 1.

Figure 2: Time- to-infection by day 90

The Kaplan-Meier curves for cumulative incidence of infected pancreatic necrosis from randomization to day 90 in the intention-to-treat population.

Figure 3: Subgroup analysis of the risk of infected pancreatic necrosis by the index hospital discharge and day 90.

Panel A shows the relative risk of infected pancreatic necrosis during the index admission between the two treatment groups. Panel B shows the relative risk of infected pancreatic necrosis up to 90 days after randomization. A relative risk of less than 1.0 indicates better results for the T α 1 group

Table 1. Baseline characteristics of the study subjects

Characteristics	Tα1 group (N=254)	Placebo group (N=254)
Age, mean (SD), y	44.3 (13.2)	45.4 (13.4)
Gender		
Women (%)	92 (36.2)	97 (38.2)
Men (%)	166 (63.8)	157 (61.8)
BMI, mean (SD), kg/m ²	26.4 (3.8)	26.8 (4.2)
Etiologies		
Alcoholic	17 (6.7)	15 (5.9)
Biliary	101 (39.8)	100 (39.4)
Idiopathic	12 (4.7)	12 (4.7)
Hypertriglyceridemia	124 (48.8)	127 (50.0)
Charlson score, mean (SD)	0.6 (0.7)	0.5 (0.8)
Interval between onset and randomization	2.9 (2.5)	3.0 (1.9)
The extent of pancreatic necrosis		
<30%	165 (65.0)	151 (59.4)
30–50%	55 (21.7)	72 (28.3)
>50%	34 (13.4)	31 (12.2)
Disease severity		
CTSI score, mean (SD)	6.4 (1.6)	6.6 (1.6)
APACHE II score, mean (SD)	11.2 (4.1)	11.3 (5.0)
CRP, mean (SD)	170.1 (104.6)	172.6 (103.7)
Lymphocyte count, mean (SD)	1.0 (0.5)	1.0 (0.5)
SOFA score, mean (SD)	4.6 (3.3)	4.5 (3.1)
Respiration, mean (SD)	1.8 (0.8)	1.8 (0.9)
Cardiovascular, mean (SD)	0.4 (1.1)	0.5 (1.1)
Renal, mean (SD)	0.7 (1.3)	0.6 (1.2)

P>0.05 for the comparison between the groups for all characteristics. SD denotes standard deviation. BMI denotes body mass index. CTSI denotes compute tomography severity index.

APACHE II denotes acute physiology and chronic health evaluation II, which ranges from 0 to 71, with higher scores indicating more severe disease. CRP denote C-reactive protein. SOFA denotes sequential organ failure assessment, which ranges from 0 to 24, with higher scores indicating more severe organ failure.

Table 2. Primary and secondary endpoints

	Tot group	Placebo group	Risk difference	P value
	(N=254)	(N=254)	(95% CI)	
Primary endpoint				
IPN during the index admission, (n, %)**	40 (15.7)	46 (18.1)	-2.40 (-7.42, 4.98)	0.47
Secondary endpoints*				
New-onset organ failure	27 (10.6)	38 (15.0)	-4.26 (-8.18, 1.93)	0.15
Respiratory, (n, %)	9 (3.5)	17 (6.7)	-3.15 (-5.08, 1.08)	0.11
Renal, (n, %)	10 (3.9)	7 (2.8)	1.25 (-1.19, 7.48)	0.43
Cardiovascular, (n, %)	14 (5.5)	20 (7.9)	-2.33 (-5.00, 2.82)	0.30
Mortality (n, %)	18 (7.1)	22 (8.7)	-1.55 (-4.73, 4.21)	0.52
90-day mortality (n, %)	23 (9.1)	23 (9.1)	0.03 (-3.79, 6.63)	0.99
IPN within 90 days after randomization (n, %)	57 (22.4)	65 (25.6)	-3.25 (-9.18, 4.83)	0.39
Bleeding, (n, %)	16 (6.3)	9 (3.5)	2.80 (-0.69, 10.53)	0.15
Positive blood culture (n, %)	18 (7.1)	25 (9.8)	-2.73 (-5.85, 2.83)	0.27
Gastrointestinal fistula, (n, %)	5 (2.0)	6 (2.4)	-0.41 (-1.76, 3.91)	0.75
Length of ICU stay, mean (SD), d	14.4 (16.2)	13.6 (16.4)	0.75 (-2.07, 3.57)	0.60
Length of hospital stay, mean (SD), d	21.0 (21.3)	20.5 (20.0)	0.46 (-3.12, 4.03)	0.80
In-hospital cost, kyuan	143 (177)	138 (206)	5 (-28, 38)	0.77
Requirement of invasive intervention				
Catheter drainage (n, %) #	36 (14.2)	39 (15.4)	-1.27 (-6.08, 6.02)	0.69
Number of drainage procedures, mean (SD)	0.4 (1.1)	0.4 (1.2)	-0.02 (-0.21, 0.18)	0.84
Minimally-invasive debridement (n, %)	17 (6.7)	12 (4.7)	1.96 (-1.44, 8.91)	0.34
Number of minimally invasive procedures, mean (SD)	0.2 (1.0)	0.2 (0.9)	0.04 (-0.13, 0.21)	0.61
Open surgery (n, %)	8 (3.1)	5 (2.0)	1.14 (-0.93, 7.37)	0.41

CI denotes confidential interval. IPN denotes infected pancreatic necrosis. ICU denotes intensive care unit. *All secondary endpoints were registered during the index admission unless otherwise specified; # Both percutaneous or transluminal drainage included; **, adjusted for sites.

Enrollment

3569 Patients admitted for acute pancreatitis screened for eligibility

3061 Excluded

- 1686 Longer than 7d from onset of abdominal pain
- 275 Age < 18 or > 70
- 598 APACHEII score < 8
- 398 CTSI < 5
- 17 Unable to obtain informed consent
- 23 Pregnancy-associated pancreatitis
- 17 Tumor-associated pancreatitis
- 27 History of early laparotomy
- 17 Severe comorbidities
- 3 Severe immune system disease

508 Patients randomized

Allocation

254 Randomized to receive Tα1

254 Randomized to receive placebo

Follow-Up

11 Premature discontinuations

- 11 Withdrawal of consent
- 0 Lost to follow-up

11 Premature discontinuations

- 8 Withdrawal of consent
- 3 Investigators ceased treatment due to adverse reaction
- 0 Lost to follow-up

254 Included in ITT analysis

254 Included in ITT analysis

Analysis

14 Excluded from per-protocol analysis

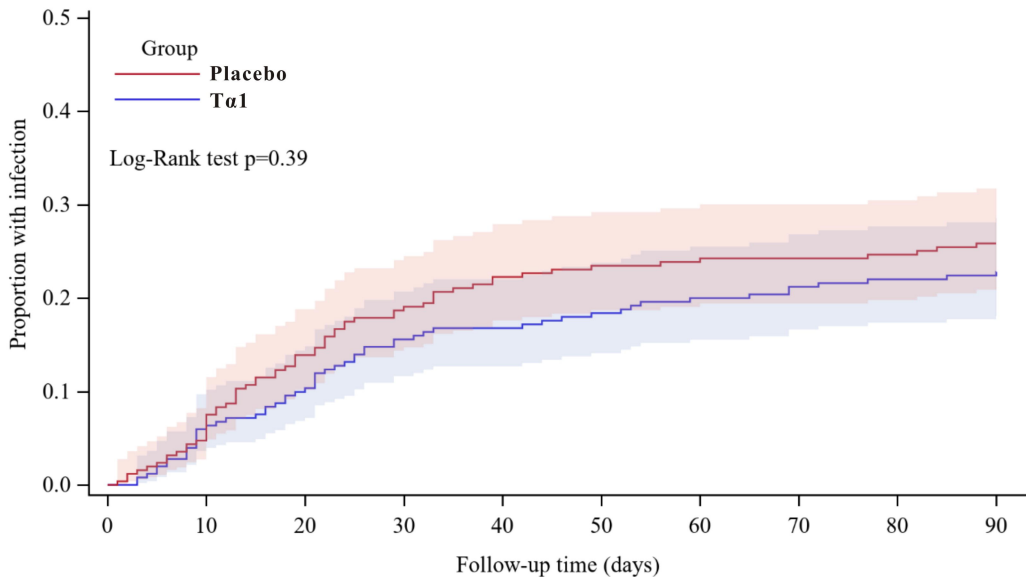
- 4 Longer than 7d from onset of abdominal pain
- 4 APACHE II < 8 or CTSI < 5
- 6 Age > 70

12 Excluded from per-protocol analysis

- 3 Longer than 7d from onset of abdominal pain
- 4 APACHE II < 8 or CTSI < 5
- 5 Age > 70

240 Included in PP analysis

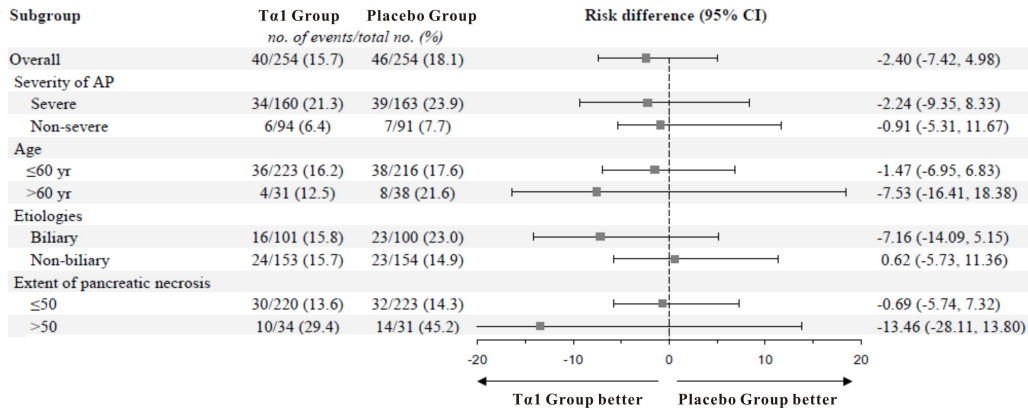
242 Included in PP analysis



Number at risk

B	254	240	216	204	195	192	191	190	189	186
A	254	236	225	210	207	203	199	196	194	193

A



B

