

39 **ABSTRACT**

40 Our recent data demonstrates a critical role of the RIG-I-like receptor (RLR) family in regulating
41 antifungal immunity against *Aspergillus fumigatus* in a murine model. However, the importance
42 of this pathway in humans and the cell type(s) which utilize this innate immune receptor to detect
43 *A. fumigatus* remains unresolved. Here using patients who underwent hematopoietic stem cell
44 transplantation (HSCT), we demonstrate that a polymorphism in human *MAVS* present in the donor
45 genome was associated with the incidence of invasive pulmonary aspergillosis (IPA). Moreover,
46 in a separate cohort of confirmed IPA patients, polymorphisms in the *IFIH1* gene alter the
47 inflammatory response, including interferon-responsive chemokines. Returning to our murine
48 model, we now demonstrate that CD11c⁺ SiglecF⁺ alveolar macrophages require *Mavs* expression
49 to maintain host resistance against *A. fumigatus*. Our data support the role of MAVS signaling in
50 mediating antifungal immunity in both mice and human at least in part through the role of MAVS-
51 dependent signaling in alveolar macrophages.

52

53 INTRODUCTION

54 *Aspergillus fumigatus* is a ubiquitous environmental mold that humans inhale on a daily
55 basis. Individuals with normal immune systems readily clear *A. fumigatus* conidia from their
56 airways without complications. In contrast, immunocompromised individuals are at significantly
57 greater risk of developing invasive pulmonary aspergillosis (IPA), including those receiving
58 chemotherapy treatments for cancer and patients receiving immunosuppressive regimens to
59 prevent GVHD following hematopoietic stem cell or solid organ transplantation [1-5]. However,
60 only a small proportion of immunosuppressed patients develop invasive fungal infections
61 indicating that additional risk factors must exist. Numerous human studies have identified genetic
62 polymorphisms in key antifungal pattern recognition receptors and inflammatory cytokines
63 associated with fungal infections (reviewed in [6-8]). Thus, it is important to understand how these
64 responses are coordinated in response to fungal infection of the lungs.

65 Recently, both type I and type III interferons have been shown to be essential for host
66 resistance against pulmonary *A. fumigatus* challenge [9]. Induction of the type I and type III
67 interferon response following *A. fumigatus* challenge in the mouse model is dependent on both
68 Dectin 1 (*Clec7a*) and MDA5 (*Ifih1*) [10, 11]. Engagement of Dectin 1 leads to Syk activation
69 which drive IRF5 activation for the production of IFN β following *Candida albicans* challenge
70 [12]. MDA5 engagement by dsRNA leads to its interaction with MAVS resulting in the
71 recruitment of IKK ϵ and TBK1 that activate NF κ B and IRF3 and IRF7, respectively, for the
72 production of early cytokines and type I interferons [13]. Genetic polymorphisms within *CLEC7A*
73 have been associated with increased risk of developing IPA [14-16], while the role for genetic
74 polymorphisms within *IFIH1* or *MAVS* regarding susceptibility to IPA has not been explored to
75 date.

76 Herein, our data demonstrates that genetic polymorphisms within *IFIH1* and *MAVS* alter
77 the production of interferon-dependent chemokines and risk for HSCT patients in developing IPA,
78 respectively. Interestingly, increased risk for developing IPA was associated with genetic variation
79 within *MAVS* only in the donor/hematopoietic compartment. Using our murine model, we identify
80 alveolar macrophages as a key hematopoietic cell in the induction of the MDA5/MAVS-dependent
81 interferon response which is necessary for host resistance against *A. fumigatus*. Overall, our study
82 reveals a critical role for MDA5/MAVS in host anti-fungal immunity in both mice and humans.

83

84 **MATERIALS & METHODS**

85 Mice and *Aspergillus fumigatus* challenge model. *Ifih1*^(-/-) (Jackson Laboratory, Stock #015812),
86 *Mavs*^(fl/fl) [17], and *Mavs*^(fl/fl) *x Itgax-Cre* mice [17] were bred in-house at Geisel School of Medicine
87 at Dartmouth. C57BL/6J mice were purchased from Jackson Laboratory. All mice were 8-16
88 weeks of age at the time of challenge. Both female and male mice were used in these studies with
89 no biological difference between the sexes. Animals were not co-housed to equilibrate their
90 microbiota, which is a limitation of this study.

91
92 Preparation of *Aspergillus fumigatus* conidia and murine challenge model. *A. fumigatus* CEA10
93 strains were used for this study. *A. fumigatus* was grown on glucose minimal media (GMM) agar
94 plates for 3 days at 37°C. Conidia were harvested by adding 0.01% Tween 80 to plates and gently
95 scraping conidia from the plates using a cell scraper. Conidia were then filtered through sterile
96 Miracloth, were washed, and resuspended in phosphate buffered saline (PBS), and counted on a
97 hemocytometer.

98 Mice were challenged with *A. fumigatus* conidia by the intratracheal (i.t.) route. Mice were
99 anesthetized by inhalation of isoflurane; subsequently, mice were challenged i.t. with $\sim 4 \times 10^7$ *A.*
100 *fumigatus* conidia in a volume of 100 μ l PBS. At the indicated time after *A. fumigatus* challenge,
101 mice were euthanized using carbon dioxide. Bronchoalveolar lavage fluid (BALF) was collected
102 by washing the lungs with 2 ml of PBS containing 0.05M EDTA. BALF was clarified by
103 centrifugation and stored at -20°C until analysis. After centrifugation, the cellular component of
104 the BALF was resuspended in 200 μ l of PBS and total BAL cells were determined by
105 hemocytometer count. BALF cells were subsequently spun onto glass slides using a Cytospin4
106 cytocentrifuge (Thermo Scientific) and stained with the Hema 3™ Stat Pack (Fisher Scientific)

107 stain set for differential counting. For histological analysis lungs were filled with and stored in
108 10% buffered formalin phosphate for at least 24 hours. Lungs were then embedded in paraffin and
109 sectioned into 5-micron sections. Sections were stained with Grocott-Gomori methenamine silver
110 (GMS) using standard histological techniques to assess lung inflammatory infiltrates and fungal
111 germination, respectively. Representative pictures of lung sections were taken using an Olympus
112 BX50WI microscope with a QImaging Retiga 2000R camera.

113
114 Alveolar macrophage isolation and adoptive transfer. Lungs from naïve *Ifih1*^(-/-), *Mavs*^(fl/fl) and
115 *Mavs*^(fl/fl) *x* *Itgax-Cre* were perfused with 20-30 ml of PBS. Lungs were then removed, injected
116 with 700 µl of collagenase buffer [10ml RPMI, 1ml FBS, 25 µl 0.5M CaCl₂, 25 µl 0.5M MgCl₂,
117 50 µl HEPES, 100 µl L-glutamine, 100 µl Penn-Strep, 2 µl gentamycin, 25 µl DNase (VWR,
118 Catalog # 77001-900), and 2 ml Liberase (Sigma-Aldrich)], and finally placed in 15 ml conical
119 tube containing 2 ml of collagenase buffer. Lungs were digested for 30min at 37°C while shaking
120 at 160-180 rpm. After which, 5 ml of ice cold stop buffer [25 ml RPMI, 1.25 ml FBS, 50 µl 0.5M
121 EDTA] was added to each tube. Lungs were pushed through a 70 µm filter to generate a single cell
122 suspension. Single cell lung suspensions were labeled with anti-Siglec-F MicroBeads (Miltenyi
123 Biotec, Cat. No. 130-118-513) and selected for using LS Columns (Miltenyi Biotec, Cat. No. 130-
124 042-401). Siglec F⁺ were eluted from the column, spun down, and resuspended in DMEM at 5x10⁶
125 cells per ml. Subsequently 5x10⁵ Siglec F⁺ alveolar macrophages were transferred i.t. to *Mavs*^(fl/fl)
126 *x* *Itgax-Cre*. Twenty-four hours later mice were challenge with *A. fumigatus* as described above.

127

128 Human HSCT cohort for SNP analysis. A total of 460 hematologic patients undergoing allogeneic
129 hematopoietic stem cell transplantation (HSCT) at the Hospital of Santa Maria, Lisbon and
130 Instituto Português de Oncologia (IPO), Porto, between 2009 and 2015 were included in the study.
131 Cases of IPA were identified and classified as ‘probable’ or ‘proven’ according to the 2008 criteria
132 from the European Organization for Research and Treatment of Cancer/Mycology Study Group
133 (EORTC/MSG) [18]. Exclusion criteria included diagnosis of ‘possible’ IPA, infection with
134 invasive molds other than *Aspergillus* spp. or history of pre-transplant mold infection. In
135 accordance with institutional policies, all patients and donors (or their legal representative)
136 provided informed written consent for data collection, DNA and cell storage, and their use for
137 diagnostic and/or research purposes at the time of referral to transplantation. Study approval was
138 obtained from the institutional review boards (SECVS-125/2014, HSM-632/14 and CES.26/015)
139 and from the National Data Protection Commission (CNPD, 1950/2015) and was in compliance
140 with all local relevant ethical regulations.

141 Genomic DNA was isolated from whole blood of patients using the QIAcube automated
142 system (Qiagen). SNPs were selected based on their previous association with infection or with
143 putative functional consequences to the gene [19-21]. Genotyping was performed using KASPar
144 assays (LGC Genomics) in an Applied Biosystems 7500 Fast Real-Time PCR system (Thermo
145 Fisher Scientific), according to the manufacturer’s instructions.

146

147 Cytokine analysis of BALF from human IPA patients. BALF and blood samples were collected
148 from hospitalized adult patients (≥ 18 years of age) at the Leuven University Hospitals, Leuven,
149 Belgium, as previously described [22]. All patients (or their legal representative) provided
150 informed written consent for data collection, DNA and cell storage, and their use for diagnostic

151 and/or research purposes at hospital admission. This study was approved and carried out in
152 accordance with recommendations of the Ethics Subcommittee for Life and Health Sciences of the
153 University of Minho, Portugal (SECVS-125/2014), and the Ethics Committee of the University
154 Hospitals of Leuven, Belgium. Written informed consent was obtained from all subjects in
155 accordance with the Declaration of Helsinki.

156 For this cytokine analysis, twenty-three cases of “probable” or “proven” IPA were
157 identified according to the standard criteria from the European Organization for Research and
158 Treatment of Cancer/Myology Study Group (EORTC/MSG) [18] and included for cytokine
159 analysis. Genomic DNA was isolated from EDTA venous blood and genotyped for the *IFIH1*
160 rs1990760 polymorphism. Cytokine levels were determined using the Cytokine & Chemokine 34-
161 Plex Human ProcartaPlex and stratified based on their *IFIH1* rs1990760 genotype.

162

163 Statistical analysis. Statistical significance for *in vitro* and *ex vivo* data was determined by a Mann-
164 Whitney U test, one-way ANOVA using a Bonferroni post-test, or Kruskal-Wallis one-way
165 ANOVA with Dunn’s post-test through the GraphPad Prism 7 software as outlined in the figure
166 legends. Mouse survival data were analyzed with the Mantel-Cox log rank test using GraphPad
167 Prism. For the human HSCT cohort, the probability of IPA resulting from *IFIH1* and *MAVS* SNPs
168 was analyzed using the cumulative incidence method and compared using Gray’s test [23]. The
169 Gray’s test was selected for the analysis because, in contrast with the commonly used Kaplan-
170 Meier and Cox models, it allows accounting for multiple competing risks and provides a better
171 estimation for the risk of the main outcome of interest, in this case the development of IPA [24].
172 Cumulative incidences were computed with the *cmprsk* package for R version 2.10.1 [25], with

173 censoring of data at the date of last follow-up visit and defining relapse and death as competing
174 events. A period of 24 months after transplant was chosen to include all cases of IPA.

175

176 Study approvals. All animal experiments were approved by the Dartmouth College Institutional
177 Animal Care and Use Committee under protocol number 00002168. For our human studies
178 approval was obtained from the institutional review boards (SECVS-125/2014, HSM-632/14 and
179 CES.26/015) and from the National Data Protection Commission (CNPD, 1950/2015) and was in
180 compliance with all local relevant ethical regulations.

181

182 **RESULTS**

183

184 **Single Nucleotide Polymorphisms (SNPs) in *IFIH1* and *MAVS* influence the risk for**
185 **developing invasive pulmonary aspergillosis.**

186 Our recent mouse data suggests that MDA5/MAVS signaling is critical in maintaining host
187 resistance against pulmonary challenge with *A. fumigatus* [11]. Therefore, we wanted to explore
188 the role of these molecules in a human cohort comprised of 460 HSCT patients (Supplemental
189 Table 1). Missense SNPs within the coding region of *IFIH1* (rs1990760 and rs3747517) are
190 associated with autoimmune conditions, particularly interferonopathies [19]. Moreover, a
191 missense SNP in *MAVS* (rs17857295) is associated with altered type I interferon regulation [21].
192 While an individual genotype for each SNP was not associated with risk of developing IPA
193 (Supplemental Figure 1), we further examined these SNPs using a recessive genetic model because
194 the autoimmune risk allele in *IFIH1* rs1990760 has been shown to work in a dominant fashion
195 [19]. Notably, we found a significant association between the CC genotype at rs1990760 in *IFIH1*
196 and the risk of developing IPA in HSCT recipients (Figure 1A). This increased risk occurred when
197 the variant was carried by the recipient in a recessive genetic model, but not when it was carried
198 by the donor. In contrast, no association between the *IFIH1* rs3747517 SNP and the risk of
199 developing IPA was found (Figure 1B). Additionally, we also found a significant association
200 between the *MAVS* rs17857295 SNP and the risk of developing IPA in HSCT recipients (Figure
201 1C). This increased risk occurred when the variant was carried by the donor in a recessive genetic
202 model, but not when it was carried by the recipient. Moreover, the risk from the donor *MAVS*
203 rs17857295 SNP held up to multivariate analysis accounting for relevant clinical risk factors
204 (Table 1).

205 To demonstrate a functional effect of the rs1990760 SNP in *IFIH1* and the associated
206 amino acid substitution on the function of MDA5, we analyzed the inflammatory response in the
207 bronchoalveolar lavage fluid (BALF) of 23 patients with IPA after stratification by genotypes at
208 rs1990760 in *IFIH1* (Supplemental Table 2). We found that individuals with the CC genotype,
209 which is associated with increased risk of developing IPA (Figure 1A), had a significant reduction
210 in IP-10 (CXCL10), RANTES (CCL5), and MIP-1 α (CCL3), but not IL-8 and GRO α (CXCL1)
211 (Figure 1D). IP-10 (CXCL10), RANTES (CCL5), and MIP-1 α (CCL3) are known to be interferon-
212 responsive genes, while IL-8 and GRO α (CXCL1) are not [26]. In the BALF samples from this
213 patient cohort, the levels of IFN- α were below the detection limit (data not shown). Given the
214 relatively rare frequency of the rs17857295 genotype in *MAVS*, it was not possible to analyze
215 cytokine production according to *MAVS* genotype in the BAL samples (data not shown). Overall,
216 these data support an important role for MDA5/MAVS signaling in regulating the inflammatory
217 response and host resistance against *Aspergillus* spp. in humans.

218
219 **Deletion of *Mavs* in CD11c⁺ cells result in increased susceptibility to *Aspergillus fumigatus* in**
220 **mice.**

221 Given the observation that patients in the HSCT cohort with the *MAVS* rs17857295
222 polymorphism within the donor population had altered risk for developing IPA, we next wanted
223 to assess which hematopoietic cell population(s) in our invasive aspergillosis murine model relies
224 on *Mavs* to maintain host resistance against *A. fumigatus*. To directly address which cells must
225 express *Mavs* we utilized the recently developed *Mavs*^(fl/fl) *x* *Itgax-Cre* conditional knock-out
226 model, hereafter referred to as *Mavs*^(Cd11c/Cd11c), that will delete *Mavs* in all CD11c-expressing cells
227 [17], including both dendritic cells and alveolar macrophages. To test of role of *Mavs* expression

228 in CD11c-expressing cells for the maintenance of host resistance against *A. fumigatus*, we
229 challenged C57BL/6J, *Mavs*^(fl/fl), and *Mavs*^(Cd11c/Cd11c) mice with 4×10^7 conidia of the CEA10 strain
230 and monitored survival over nine days. *Mavs*^(Cd11c/Cd11c) mice were more susceptible to pulmonary
231 challenge with *A. fumigatus* than either C57BL/6J or *Mavs*^(fl/fl) mice (Figure 2A; Mantel-Cox log
232 rank test, $p < 0.0001$). Mice completely lacking either *Ifih1* or *Mavs* have decreased neutrophil
233 recruitment, which was associated with increased fungal germination after pulmonary challenge
234 with *A. fumigatus* [11]. Thus, we assessed fungal germination in the lung by histological analysis
235 at 48 h after conidial instillation. Strikingly, GMS staining of lung tissue from *Mavs*^(Cd11c/Cd11c)
236 mice revealed high levels of *A. fumigatus* germination at this time compared with control *Mavs*^(fl/fl)
237 mice (Figure 2B). When the percentage of germinated *A. fumigatus* was quantified, *Mavs*^(fl/fl) mice
238 displayed low levels of fungal germination ($23.5\% \pm 9.1$) compared with *Mavs*^(Cd11c/Cd11c) mice
239 ($60.1\% \pm 8.2$). Finally, we assessed inflammatory cell accumulation in the airways. The increased
240 susceptibility of *Mavs*^(Cd11c/Cd11c) mice to *A. fumigatus* challenge was associated with decreased
241 accumulation of neutrophils in the airways compared with *Mavs*^(fl/fl) mice (Figure 2C). These data
242 match our prior observations with mice completely lacking either *Ifih1* or *Mavs* having increased
243 IPA susceptibility [11], suggesting that *Mavs* expression within CD11c-expressing cells is critical
244 for host resistance against *A. fumigatus* challenge.

245

246 **Alveolar macrophage transfer to *Mavs*^(Cd11c/Cd11c) conditional knock-out mice reduces their**
247 **susceptibility to *Aspergillus fumigatus* in mice.**

248 Multiple cells in the lungs can express *Igtax* (CD11c) including alveolar macrophages,
249 CD103⁺ dendritic cells, CD11b⁺ dendritic cells, monocyte-derived dendritic cells, and
250 plasmacytoid dendritic cells, all of which have been implicated in the antifungal immune response

251 against *A. fumigatus* [27-33]. Utilizing the publicly available data assembled by the ImmGen
252 Consortium [34], in the lungs we see that *Mavs* is highly expressed in Siglec F⁺ alveolar
253 macrophages, but also moderately expressed in both monocytes and dendritic cells (data not
254 shown). Interestingly, following RSV infection alveolar macrophages have been shown to be the
255 key cell type for initiating the type I interferon through a MAVS-dependent mechanism [35, 36].
256 While alveolar macrophages largely populate the lungs during embryogenesis and are maintained
257 by local proliferation during homeostasis [37, 38] following conditioning for HSC transplantation
258 alveolar macrophage can be repopulated from the donor HSC compartment [39-42]. Therefore, to
259 specifically address the role of *Mavs* in alveolar macrophages, we purified Siglec F⁺ cells from the
260 lungs of naïve *Mavs*^(fl/fl) or *Mavs*^(Cd11c/Cd11c) mice and transferred 5x10⁵ Siglec F⁺ cells
261 intratracheally into *Mavs*^(Cd11c/Cd11c) mice one day prior to challenging with 4x10⁷ conidia of the
262 CEA10 strain (Figure 3A). Forty-eight hours after challenge, we examined the lungs by GMS
263 staining of lung tissue from *Mavs*^(Cd11c/Cd11c) mice receiving the *Mavs*^(Cd11c/Cd11c) Siglec F⁺ cells and
264 revealed the presence of high levels of germinated *A. fumigatus* (68.1% ± 12.6), while that was
265 not observed to the same extent in *Mavs*^(Cd11c/Cd11c) mice receiving the *Mavs*^(fl/fl) Siglec F⁺ cells
266 (31.4% ± 6.7) (Figure 3B). This is in line with control *Mavs*^(Cd11c/Cd11c) mice or *Mavs*^(fl/fl) mice
267 receiving DMEM (vehicle) administered intratracheally. When we examined the accumulation of
268 leukocytes in the airways by differential cytopsin analysis we found that *Mavs*^(Cd11c/Cd11c) mice
269 receiving *Mavs*^(Cd11c/Cd11c) Siglec F⁺ cells had reduced numbers of neutrophils when compared with
270 *Mavs*^(Cd11c/Cd11c) mice receiving *Mavs*^(fl/fl) Siglec F⁺ cells (Figure 3C). Strikingly, when we
271 examined macrophage numbers in the airways, we found *Mavs*^(Cd11c/Cd11c) mice receiving *Mavs*^(fl/fl)
272 Siglec F⁺ cells had many macrophages present, but *Mavs*^(Cd11c/Cd11c) mice receiving *Mavs*^(Cd11c/Cd11c)
273 Siglec F⁺ cells had few macrophages in their airways at 48 hours post-inoculation with *A.*

274 *fumigatus* (Figure 3D). Importantly, the decrease in macrophages in the airways is not observed in
275 naïve *Mavs*^(Cd11c/Cd11c) mice (Supplemental Figure 2A). Additionally, *Mavs*^(Cd11c/Cd11c) mice
276 receiving an i.t. transfer of *Mavs*^(Cd11c/Cd11c) Siglec F⁺ cells 24h prior only had a moderate decrease
277 in alveolar macrophage numbers (Supplemental Figure 2B).

278 Next, to examine the role of *Ifih1* in alveolar macrophages, we purified Siglec F⁺ cells from
279 the lungs of naïve *Mavs*^(fl/fl) or *Ifih1*^(-/-) mice and transferred 5x10⁵ Siglec F⁺ cells intratracheally
280 into *Mavs*^(Cd11c/Cd11c) mice one day prior to challenging with 4x10⁷ conidia of the CEA10 strain
281 (Supplemental Figure 3). Forty-eight hours after challenge, we examined the lungs by GMS
282 staining of lung tissue from *Mavs*^(Cd11c/Cd11c) mice receiving either DMEM or *Ifih1*^(-/-) Siglec F⁺
283 cells, revealing the presence of high levels of germinated *A. fumigatus*, which was not observed to
284 the same extent in *Mavs*^(Cd11c/Cd11c) mice receiving the *Mavs*^(fl/fl) Siglec F⁺ cells (Supplemental
285 Figure 3). Taken all together, these data demonstrate that *Ifih1* and *Mavs* expression within Siglec
286 F⁺ alveolar macrophages is critical for host resistance against *A. fumigatus*.

287

288

289 **DISCUSSION**

290 Humans inhale *Aspergillus fumigatus* spores on a daily basis, but individuals with healthy
291 immune systems readily clear *A. fumigatus* conidia from their airways without problems. One lung
292 sentinel cell that can be critical in the clearance of *A. fumigatus* is the alveolar macrophage.
293 Alveolar macrophages are known to phagocytose and destroy *A. fumigatus* [31], but their role in
294 host resistance has remained controversial [33, 43]. Patients undergoing HSCT are at increased
295 risk of developing IPA [1-5]. In early studies from patients undergoing HSCT, alveolar
296 macrophages are dysfunctional [41] and found at decreased in numbers [40-42] for at least 50 days
297 post-transplantation. However, we currently do not understand the effects of modern HSCT
298 conditioning regimens on alveolar macrophages function and numbers, which is a limitation of
299 our study. Either way it is important to understand the role of alveolar macrophages in the initial
300 inflammatory response induced by *A. fumigatus*. These lung sentinel alveolar macrophages are
301 also known to participate in the inflammatory response induced by *A. fumigatus* [44], but their role
302 in driving the interferon response following *A. fumigatus* challenge was not addressed. During
303 respiratory syncytial virus infection alveolar macrophages have been demonstrated to be key
304 drivers of the type I interferon response through a MAVS-dependent mechanism [35, 36]. We
305 recently describe a critical role for MDA5/MAVS-dependent induction of interferons following *A.*
306 *fumigatus* challenge [11], but the cellular localization of MAVS-dependent signaling was not
307 elucidated. Here we demonstrated that *Mavs* expression in alveolar macrophages was at least
308 partially necessary for host resistance against *A. fumigatus*, through the regulation of neutrophil
309 accumulation in the lung for the prevention of fungal growth. While alveolar macrophage transfer
310 to *Mavs*^(Cd11c/Cd11c) mice largely restores host resistance, it was not absolute suggesting additional
311 CD11c⁺ cells might require *Mavs* expression for resistance. One potential candidate would be

312 plasmacytoid dendritic cells that are known to produce type I interferons after fungal challenge
313 [27] and are essential for host resistance *A. fumigatus* [45], but the importance of MAVS signaling
314 in plasmacytoid dendritic cells in driving the interferon response remains controversial.
315 Additionally, in a dendritic cell vaccination model, *A. fumigatus* conidial RNA was shown to be
316 sufficient for the activation of dendritic cells to preferentially prime a Th1 immune response [46],
317 which was at least partially dependent on TLR3 [47]. The role of MAVS signaling in other CD11c⁺
318 cell populations will be explored in future studies. Alveolar macrophages also participate in the
319 inflammatory response to other fungal pathogens including *Cryptococcus neoformans* [48],
320 *Pneumocystis* spp. [49], and *Rhizopus* spp. [50]. Interestingly, heterogeneity within the alveolar
321 macrophage population has been demonstrated particularly in regard to CXCL2 expression [48],
322 which could be important in our findings showing that the mice lacking *Ifih1* or *Mavs* have
323 decreased neutrophil accumulation following *A. fumigatus* challenge [11]. Additionally,
324 Jakubzick and colleagues have identified significant heterogeneity within human alveolar
325 macrophages using single cell RNA-Seq, which include the identification of novel IFN responsive
326 alveolar macrophage populations and a number of chemokine producing populations [51].
327 Understanding the specific role of these alveolar macrophage populations in host resistance is the
328 goal of future studies.

329 In addition to the role of alveolar macrophages in the interferon-dependent antifungal
330 immune response that we describe herein, it has previously been shown that *in vitro* human
331 bronchial epithelial cells can secrete IFN β and CXCL10 in response *A. fumigatus* spore challenge
332 [52]. Following respiratory virus infections, the lung epithelium can be a critical source of antiviral
333 interferons, which can be driven by both TLRs and RLRs [53, 54]. In the human bronchial
334 epithelial cell model, Bals and colleagues demonstrated that fungal dsRNA which was transfected

335 into the human bronchial epithelial cells was sufficient for inducing IFN β and CXCL10 secretion
336 [52], which is similar to our previous findings using in murine fibroblast [11]. However, while
337 Bals and colleagues demonstrated that *A. fumigatus* dsRNA was sufficient for the activation of
338 TLR3-TRIF signaling, they did not examine the necessity of this pathway in driving IFN β and
339 CXCL10 secretion by the human bronchial epithelial cells [52]. Interestingly, in our preliminary
340 studies, cytosolic delivery of *A. fumigatus* dsRNA drives both MDA5/MAVS-dependent and
341 TRIF-dependent IFN α and CXCL10 response in murine fibroblasts (data not shown). Moreover,
342 Romani and colleagues have found both *Tlr3*- and *Ticam1* (TRIF)-deficient mice are highly
343 susceptible to pulmonary *A. fumigatus* challenge [47, 55], and this was due entirely to TRIF-
344 dependent response in epithelial cells [55]. Interestingly, in our HSCT patients, the *IFIH1* SNP
345 association was found in the host genotype. Taken together, these data suggest the lung epithelial
346 cells could be another potential source of IFNs after *A. fumigatus* challenge which needs to be
347 explored in future studies.

348 While our previous studies have shown the importance of MDA5/MAVS signaling [11]
349 and type I/III interferons [9] in host resistance against *A. fumigatus* in the murine model, the
350 importance of these pathways in humans has not been described. Herein, we have found that
351 antifungal role of MDA5/MAVS signaling is also critical in humans. Our data from a cohort of
352 HSCT patients demonstrate that SNPs in *IFIH1* (rs1990760) and *MAVS* (rs17857295) are associated
353 with an altered risk of developing IPA. Interestingly, SNPs within *IFIH1* have been associated
354 with numerous autoimmune diseases, particularly those that are highly dependent on type I
355 interferons for their progression [19, 56]. Recent evidence suggests that the autoimmune risk
356 genotype of the rs1990760 SNP in *IFIH1* (TT) has functional consequences in human PBMCs,
357 specifically it is associated with elevated basal levels of *IFNBI* [19]. Knock-in of the *IFIH1*

358 rs1990760 autoimmune risk genotype (TT) into mice not only recapitulates the susceptibility to
359 autoimmune diseases, but also results in increased host resistance against encephalomyocarditis
360 virus (ECMV), a picornavirus specifically recognized by MDA5 [57], and elevated *Ifnb1*
361 expression [19]. Moreover, in human pancreatic islets it has been shown that the *IFIH1* rs1990760
362 TC genotype also drove enhanced interferon signaling after Coxsackievirus infection [20]. This
363 enhanced interferon response during Coxsackievirus infection was associated with greater
364 signaling from the peroxisomes by the *IFIH1* rs1990760 TC genotype [20], which has previously
365 been shown to preferentially induce a type III interferon response [58, 59]. Interestingly, our SNP
366 analysis of a human HSCT cohort found that the T allele of *IFIH1* rs1990760, which as just
367 mentioned is associated with an increased interferon response [19, 20], was associated with a
368 reduced risk for the development of IPA. In addition to the *IFIH1* rs1990760 SNP, we also found
369 a clinical association with the rs17857295 SNP in *MAVS* with the risk of developing IPA after
370 HSCT. Much less is known about the functional outcome of the rs17857295 SNP in *MAVS*, but
371 one report suggests overexpression of the GG genotype in 293T cells stably knocked-down for the
372 endogenous *MAVS* allele resulted in an inability to induce *Ifnb1* expression following PolyI:C
373 stimulation [21]. Overall, our analysis suggests that HSCT patients harboring these SNPs display
374 a reduced ability to trigger an interferon response and are at greater risk of developing IPA.

375 In contrast to our clinical data from HSCT patients who develop IPA, the T allele at
376 rs1990760 in *IFIH1* is associated with an increased risk for the development of chronic
377 mucocutaneous candidiasis [60]. Again, the T allele at rs1990760 is associated with an increased
378 interferon response [19, 20], but the lack of IFNAR-dependent signaling leads to increased
379 susceptibility to invasive candidiasis in mice [12]. In their study Netea and colleagues did not
380 observe altered *Ifnb* expression in the absence of MDA5 after stimulation with *Candida albicans*

381 hyphae [60], but a role for MDA5 in regulating other interferons was not explored. Our data with
382 *A. fumigatus* suggests that MDA5/MAVS-signaling are more important in the regulation of type
383 III interferons (IFN λ /IL-28), rather than type I interferons (IFN α/β). Excessive inflammation and
384 tissue pathology can be critical in mediating disease during invasive candidiasis [61]. Rivera and
385 colleagues demonstrated that type III interferon (IFN λ /IL-28) signaling enhances the production
386 of reactive oxygen species by neutrophils following *A. fumigatus* [9], which could enhance disease
387 during invasive candidiasis. Thus, there appears to be an interesting dichotomy in MDA5 signaling
388 that is crucial for tuning host resistance against different fungal pathogens and warrants further
389 research.

390 **AUTHOR CONTRIBUTIONS**

391 Conceived and designed the experiments: XW, AC, JJO. Performed the experiments: XW, CC,
392 MG. Analyzed the data: XW, CC, MG, AC, JJO. Provided clinical samples: JFL, AC Jr, KL, JM.
393 Wrote the paper: XW, JJO.

394

395 **ACKNOWLEDGEMENTS**

396 Thank you to Drs. Robert Cramer, Claudia Jakubzick, and David Leib (Geisel School of Medicine
397 at Dartmouth) for helpful discussion on this project.

398

399 **REFERENCES**

- 400 1. Baddley, J.W., et al., *Factors associated with mortality in transplant patients with invasive*
401 *aspergillosis*. Clin Infect Dis, 2010. **50**(12): p. 1559-67.
- 402 2. Steinbach, W.J., et al., *Clinical epidemiology of 960 patients with invasive aspergillosis*
403 *from the PATH Alliance registry*. J Infect, 2012. **65**(5): p. 453-64.
- 404 3. Garcia-Vidal, C., et al., *Epidemiology of invasive mold infections in allogeneic stem cell*
405 *transplant recipients: biological risk factors for infection according to time after*
406 *transplantation*. Clin Infect Dis, 2008. **47**(8): p. 1041-50.
- 407 4. Upton, A., et al., *Invasive aspergillosis following hematopoietic cell transplantation:*
408 *outcomes and prognostic factors associated with mortality*. Clin Infect Dis, 2007. **44**(4): p.
409 531-40.
- 410 5. Thompson, G.R., 3rd and T.F. Patterson, *Pulmonary aspergillosis*. Semin Respir Crit Care
411 Med, 2008. **29**(2): p. 103-10.
- 412 6. Romani, L., *Immunity to fungal infections*. Nat Rev Immunol, 2011. **11**(4): p. 275-88.
- 413 7. Cunha, C., et al., *Human genetic susceptibility to invasive aspergillosis*. PLoS Pathog,
414 2013. **9**(8): p. e1003434.
- 415 8. Campos, C.F., et al., *Host Genetic Signatures of Susceptibility to Fungal Disease*. Curr
416 Top Microbiol Immunol, 2019. **422**: p. 237-263.
- 417 9. Espinosa, V., et al., *Type III interferon is a critical regulator of innate antifungal immunity*
418 Science Immunology, 2017. **2**(16): p. eaan5357.
- 419 10. Dutta, O., et al., *Dectin-1 Promotes Type I and III Interferon Expression to Support*
420 *Optimal Antifungal Immunity in the Lung*. Front Cell Infect Microbiol, 2020. **10**: p. 321.
- 421 11. Wang, X., et al., *MDA5 Is an Essential Sensor of a Pathogen-Associated Molecular Pattern*
422 *Associated with Vitality That Is Necessary for Host Resistance against Aspergillus*
423 *fumigatus*. J Immunol, 2020. **205**(11): p. 3058-3070.
- 424 12. del Fresno, C., et al., *Interferon-beta production via Dectin-1-Syk-IRF5 signaling in*
425 *dendritic cells is crucial for immunity to C. albicans*. Immunity, 2013. **38**(6): p. 1176-86.
- 426 13. Loo, Y.M. and M. Gale, Jr., *Immune signaling by RIG-I-like receptors*. Immunity, 2011.
427 **34**(5): p. 680-92.
- 428 14. Cunha, C., et al., *Dectin-1 Y238X polymorphism associates with susceptibility to invasive*
429 *aspergillosis in hematopoietic transplantation through impairment of both recipient- and*
430 *donor-dependent mechanisms of antifungal immunity*. Blood, 2010. **116**(24): p. 5394-402.

- 431 15. Sainz, J., et al., *Dectin-1 and DC-SIGN polymorphisms associated with invasive pulmonary*
432 *Aspergillosis infection*. PLoS One, 2012. **7**(2): p. e32273.
- 433 16. Fisher, C.E., et al., *Validation of single nucleotide polymorphisms in invasive aspergillosis*
434 *following hematopoietic cell transplantation*. Blood, 2017. **129**(19): p. 2693-2701.
- 435 17. Dutta, M., et al., *A Systems Approach Reveals MAVS Signaling in Myeloid Cells as Critical*
436 *for Resistance to Ebola Virus in Murine Models of Infection*. Cell Rep, 2017. **18**(3): p. 816-
437 829.
- 438 18. De Pauw, B., et al., *Revised definitions of invasive fungal disease from the European*
439 *Organization for Research and Treatment of Cancer/Invasive Fungal Infections*
440 *Cooperative Group and the National Institute of Allergy and Infectious Diseases Mycoses*
441 *Study Group (EORTC/MSG) Consensus Group*. Clin Infect Dis, 2008. **46**(12): p. 1813-21.
- 442 19. Gorman, J.A., et al., *The A946T variant of the RNA sensor IFIH1 mediates an interferon*
443 *program that limits viral infection but increases the risk for autoimmunity*. Nat Immunol,
444 2017. **18**(7): p. 744-752.
- 445 20. Domsgen, E., et al., *An IFIH1 gene polymorphism associated with risk for autoimmunity*
446 *regulates canonical antiviral defence pathways in Coxsackievirus infected human*
447 *pancreatic islets*. Sci Rep, 2016. **6**: p. 39378.
- 448 21. Xing, F., et al., *Alteration of Antiviral Signalling by Single Nucleotide Polymorphisms*
449 *(SNPs) of Mitochondrial Antiviral Signalling Protein (MAVS)*. PLoS One, 2016. **11**(3): p.
450 e0151173.
- 451 22. Goncalves, S.M., et al., *Evaluation of Bronchoalveolar Lavage Fluid Cytokines as*
452 *Biomarkers for Invasive Pulmonary Aspergillosis in At-Risk Patients*. Front Microbiol,
453 2017. **8**: p. 2362.
- 454 23. Gray, R.J., *A Class of K-Sample Tests for Comparing the Cumulative Incidence of a*
455 *Competing Risk*. The Annals of Statistics, 1988. **16**(3): p. 1141-1154.
- 456 24. Dignam, J.J. and M.N. Kocherginsky, *Choice and interpretation of statistical tests used*
457 *when competing risks are present*. J Clin Oncol, 2008. **26**(24): p. 4027-34.
- 458 25. Scrucca, L., A. Santucci, and F. Aversa, *Competing risk analysis using R: an easy guide*
459 *for clinicians*. Bone Marrow Transplant, 2007. **40**(4): p. 381-7.
- 460 26. Bauer, J.W., et al., *Elevated serum levels of interferon-regulated chemokines are*
461 *biomarkers for active human systemic lupus erythematosus*. PLoS Med, 2006. **3**(12): p.
462 e491.

- 463 27. Ramirez-Ortiz, Z.G., et al., *A nonredundant role for plasmacytoid dendritic cells in host*
464 *defense against the human fungal pathogen Aspergillus fumigatus*. Cell Host Microbe,
465 2011. **9**(5): p. 415-24.
- 466 28. Espinosa, V., et al., *Inflammatory monocytes orchestrate innate antifungal immunity in the*
467 *lung*. PLoS Pathog, 2014. **10**(2): p. e1003940.
- 468 29. Hohl, T.M., et al., *Inflammatory monocytes facilitate adaptive CD4 T cell responses during*
469 *respiratory fungal infection*. Cell Host Microbe, 2009. **6**(5): p. 470-81.
- 470 30. Zelante, T., et al., *CD103(+) Dendritic Cells Control Th17 Cell Function in the Lung*. Cell
471 Rep, 2015. **12**(11): p. 1789-801.
- 472 31. Ibrahim-Granet, O., et al., *Phagocytosis and intracellular fate of Aspergillus fumigatus*
473 *conidia in alveolar macrophages*. Infect Immun, 2003. **71**(2): p. 891-903.
- 474 32. Grimm, M.J., et al., *Monocyte- and macrophage-targeted NADPH oxidase mediates*
475 *antifungal host defense and regulation of acute inflammation in mice*. J Immunol, 2013.
476 **190**(8): p. 4175-84.
- 477 33. Bhatia, S., et al., *Rapid host defense against Aspergillus fumigatus involves alveolar*
478 *macrophages with a predominance of alternatively activated phenotype*. PLoS One, 2011.
479 **6**(1): p. e15943.
- 480 34. Heng, T.S., M.W. Painter, and C. Immunological Genome Project, *The Immunological*
481 *Genome Project: networks of gene expression in immune cells*. Nat Immunol, 2008. **9**(10):
482 p. 1091-4.
- 483 35. Goritzka, M., et al., *Alveolar macrophage-derived type I interferons orchestrate innate*
484 *immunity to RSV through recruitment of antiviral monocytes*. J Exp Med, 2015. **212**(5): p.
485 699-714.
- 486 36. Kirsebom, F.C.M., et al., *Neutrophil recruitment and activation are differentially*
487 *dependent on MyD88/TRIF and MAVS signaling during RSV infection*. Mucosal Immunol,
488 2019. **12**(5): p. 1244-1255.
- 489 37. Guilliams, M., et al., *Alveolar macrophages develop from fetal monocytes that differentiate*
490 *into long-lived cells in the first week of life via GM-CSF*. J Exp Med, 2013. **210**(10): p.
491 1977-92.
- 492 38. Svedberg, F.R., et al., *The lung environment controls alveolar macrophage metabolism*
493 *and responsiveness in type 2 inflammation*. Nat Immunol, 2019. **20**(5): p. 571-580.
- 494 39. Zinter, M.S. and J.R. Hume, *Effects of Hematopoietic Cell Transplantation on the*
495 *Pulmonary Immune Response to Infection*. Front Pediatr, 2021. **9**: p. 634566.

- 496 40. Thomas, E.D., et al., *Direct evidence for a bone marrow origin of the alveolar macrophage*
497 *in man*. Science, 1976. **192**(4243): p. 1016-8.
- 498 41. Winston, D.J., et al., *Alveolar macrophage dysfunction in human bone marrow transplant*
499 *recipients*. Am J Med, 1982. **73**(6): p. 859-66.
- 500 42. Nakata, K., et al., *Augmented proliferation of human alveolar macrophages after*
501 *allogeneic bone marrow transplantation*. Blood, 1999. **93**(2): p. 667-73.
- 502 43. Mircescu, M.M., et al., *Essential role for neutrophils but not alveolar macrophages at early*
503 *time points following Aspergillus fumigatus infection*. J Infect Dis, 2009. **200**(4): p. 647-
504 56.
- 505 44. Dubourdeau, M., et al., *Interaction of Aspergillus fumigatus with the alveolar macrophage*.
506 Med Mycol, 2006. **44**(Supplement_1): p. S213-S217.
- 507 45. Guo, Y., et al., *During Aspergillus Infection, Monocyte-Derived DCs, Neutrophils, and*
508 *Plasmacytoid DCs Enhance Innate Immune Defense through CXCR3-Dependent*
509 *Crosstalk*. Cell Host Microbe, 2020: p. doi: 10.1016/j.chom.2020.05.002.
- 510 46. Bozza, S., et al., *A dendritic cell vaccine against invasive aspergillosis in allogeneic*
511 *hematopoietic transplantation*. Blood, 2003. **102**(10): p. 3807-14.
- 512 47. Carvalho, A., et al., *TLR3 essentially promotes protective class I-restricted memory*
513 *CD8(+) T-cell responses to Aspergillus fumigatus in hematopoietic transplanted patients*.
514 Blood, 2012. **119**(4): p. 967-77.
- 515 48. Xu-Vanpala, S., et al., *Functional heterogeneity of alveolar macrophage population based*
516 *on expression of CXCL2*. Sci Immunol, 2020. **5**(50).
- 517 49. Bhagwat, S.P., et al., *Intrinsic Programming of Alveolar Macrophages for Protective*
518 *Antifungal Innate Immunity Against Pneumocystis Infection*. Front Immunol, 2018. **9**: p.
519 2131.
- 520 50. Andrianaki, A.M., et al., *Iron restriction inside macrophages regulates pulmonary host*
521 *defense against Rhizopus species*. Nat Commun, 2018. **9**(1): p. 3333.
- 522 51. Li, X., et al., *ScRna-seq expression of IFI27 and APOC2 identifies four alveolar*
523 *macrophage superclusters in healthy BALF*. bioRxiv, 2022.
- 524 52. Beisswenger, C., C. Hess, and R. Bals, *Aspergillus fumigatus conidia induce interferon-*
525 *beta signalling in respiratory epithelial cells*. Eur Respir J, 2012. **39**(2): p. 411-8.
- 526 53. Ioannidis, I., et al., *Toll-like receptor expression and induction of type I and type III*
527 *interferons in primary airway epithelial cells*. J Virol, 2013. **87**(6): p. 3261-70.

- 528 54. Crotta, S., et al., *Type I and type III interferons drive redundant amplification loops to*
529 *induce a transcriptional signature in influenza-infected airway epithelia.* PLoS Pathog,
530 2013. **9**(11): p. e1003773.
- 531 55. de Luca, A., et al., *Non-hematopoietic cells contribute to protective tolerance to*
532 *Aspergillus fumigatus via a TRIF pathway converging on IDO.* Cell Mol Immunol, 2010.
533 **7**(6): p. 459-70.
- 534 56. Cen, H., et al., *Association of IFIH1 rs1990760 polymorphism with susceptibility to*
535 *autoimmune diseases: a meta-analysis.* Autoimmunity, 2013. **46**(7): p. 455-62.
- 536 57. Kato, H., et al., *Differential roles of MDA5 and RIG-I helicases in the recognition of RNA*
537 *viruses.* Nature, 2006. **441**(7089): p. 101-5.
- 538 58. Odendall, C., et al., *Diverse intracellular pathogens activate type III interferon expression*
539 *from peroxisomes.* Nat Immunol, 2014. **15**(8): p. 717-26.
- 540 59. Dixit, E., et al., *Peroxisomes are signaling platforms for antiviral innate immunity.* Cell,
541 2010. **141**(4): p. 668-81.
- 542 60. Jaeger, M., et al., *The RIG-I-like helicase receptor MDA5 (IFIH1) is involved in the host*
543 *defense against Candida infections.* Eur J Clin Microbiol Infect Dis, 2015. **34**(5): p. 963-
544 74.
- 545 61. Pappas, P.G., et al., *Invasive candidiasis.* Nat Rev Dis Primers, 2018. **4**: p. 18026.
- 546
- 547

548 **FOOTNOTES:**

549 ¹Research in this study was supported in part by institutional startup funds to JJO in part through
550 the Dartmouth Lung Biology Center for Molecular, Cellular, and Translational Research grant P30
551 GM106394 (PI: Bruce A. Stanton) and Center for Molecular, Cellular and Translational
552 Immunological Research grant P30 GM103415 (PI: William R. Green). JJO was partially
553 supported by a Munck-Pfefferkorn Award from Dartmouth College and NIH R01 AI139133 grant.
554 SMB is supported by the Division of Intramural Research, National Institutes of Health, National
555 Institute of Allergy and Infectious Diseases. AC and CC were supported by the Fundação para a
556 Ciência e a Tecnologia (FCT) (PTDC/SAU-SER/29635/2017, PTDC/MED-GEN/28778/2017,
557 UIDB/50026/2020, UIDP/50026/2020, and CEECIND/04058/2018), the Northern Portugal
558 Regional Operational Programme (NORTE 2020), under the Portugal 2020 Partnership
559 Agreement, through the European Regional Development Fund (ERDF) (NORTE-01-0145-
560 FEDER-000039), the European Union's Horizon 2020 research and innovation programme under
561 grant agreement no. 847507, and the "la Caixa" Foundation (ID 100010434) and FCT under the
562 agreement LCF/PR/HR17/52190003. The funders had no role in the preparation or publication of
563 the manuscript.

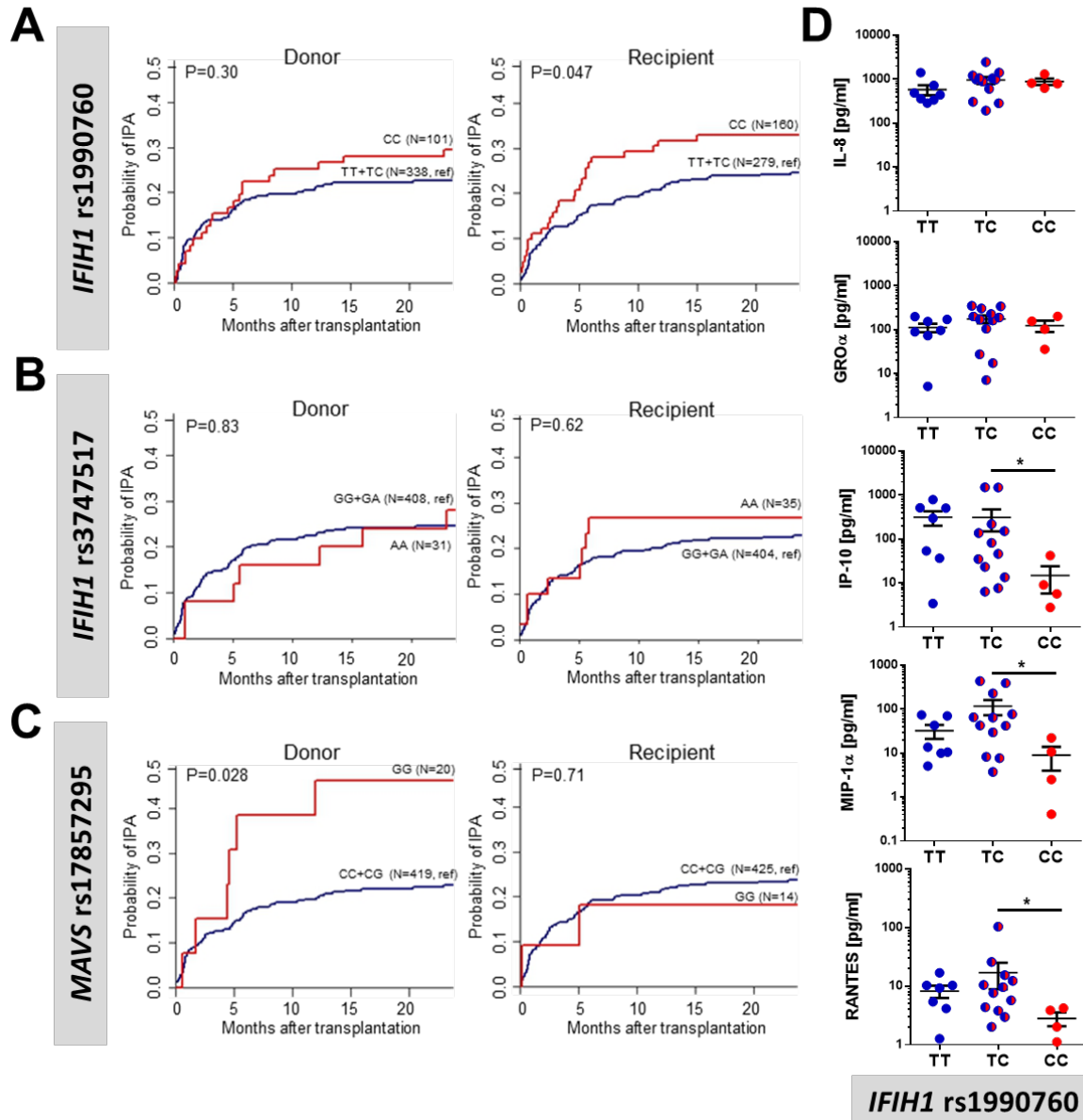
564 ²Abbreviations: IPA = invasive pulmonary aspergillosis; HCST = hematopoietic stem cell
565 transplantation; GMM = glucose minimal media; PBS = phosphate buffered saline; i.t. =
566 intratracheal; BALF = bronchoalveolar lavage fluid; GMS = Grocott-Gomori methenamine silver;
567 SNP = single nucleotide polymorphism

568 **Table 1. Multivariate analysis of the association of *IFIH1* and *MAVS* SNPs with the risk of**
569 **invasive pulmonary aspergillosis among transplant recipients.**

570	Genetic/clinical variables	Adjusted HR[†]	P value
571		(95% CI)	
572	Donor rs17857295 in <i>MAVS</i>	2.39 (1.07 – 5.32)	0.033
573	Recipient rs1990760 in <i>IFIH1</i>	1.46 (0.89 – 2.40)	0.121
574	Acute GVHD grades III-IV	1.73 (0.94 – 3.19)	0.047

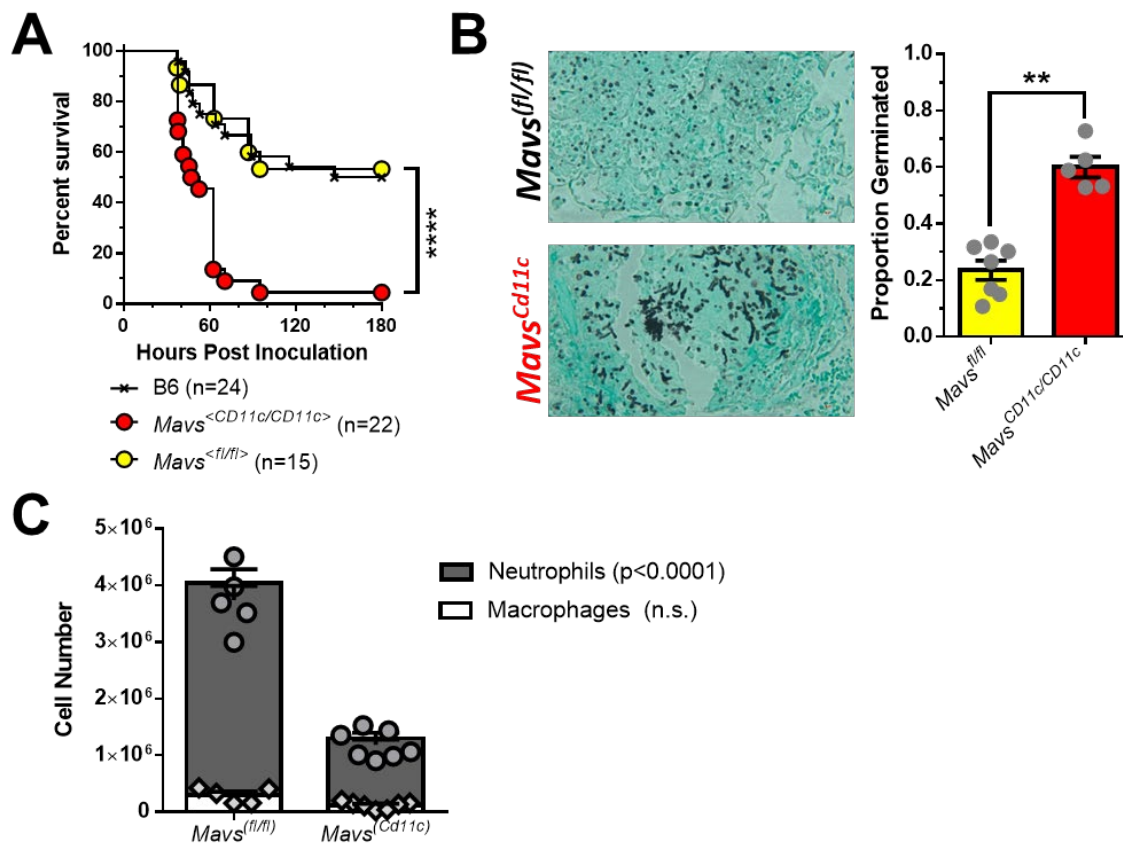
575 HR, hazard ratio; CI, confidence interval. Multivariate analyses were based on the
576 subdistribution regression model of Fine and Gray. [†]Hazard ratios were adjusted for patient age
577 and gender, and clinical variables with a P<0.15 in the univariate analyses. Only the clinical
578 variables remaining significant after adjustment are shown.

579



580
581
582
583
584
585
586
587
588
589
590

Figure 1. *IFIH1* and *MAVS* polymorphisms are associated with invasive pulmonary aspergillosis in human transplant patients using a recessive allele model. Cumulative incidence analysis of invasive aspergillosis after transplantation according to donor or recipient genotypes at rs1990760 in *IFIH1* (A), rs3747517 in *IFIH1* (B), or rs17857295 in *MAVS* (C) over 24 months after HSCT. Data were analyzed by two-sided Gray's test. (D) Inflammatory cytokine levels in the bronchoalveolar lavage fluid from 23 patients with invasive pulmonary aspergillosis were measured using a 32-plex ProCarta Luminex assay and plotted based on their *IFIH1* rs1990760 genotype. Data were analyzed using a Mann-Whitney U-test (* $p < 0.05$).



591

592 **Figure 2. *Mavs*-dependent responses are essential in *CD11c*⁺ cells for host resistance against**

593 ***Aspergillus fumigatus*. *Mavs*^{^{CD11c/CD11c}}, *Mavs*^{^{fl/fl}} and C57BL/6J mice were challenged i.t. with**

594 **4x10⁷ resting conidia of the CEA10 isolate of *Aspergillus fumigatus*. (A) Survival analysis in**

595 **immune-competent wild-type and knock-out mice were tracked over the first 9 days. ****, P <**

596 **0.0001 by Mantel-Cox log rank test. (B) Forty hours after *A. fumigatus* challenge mice were**

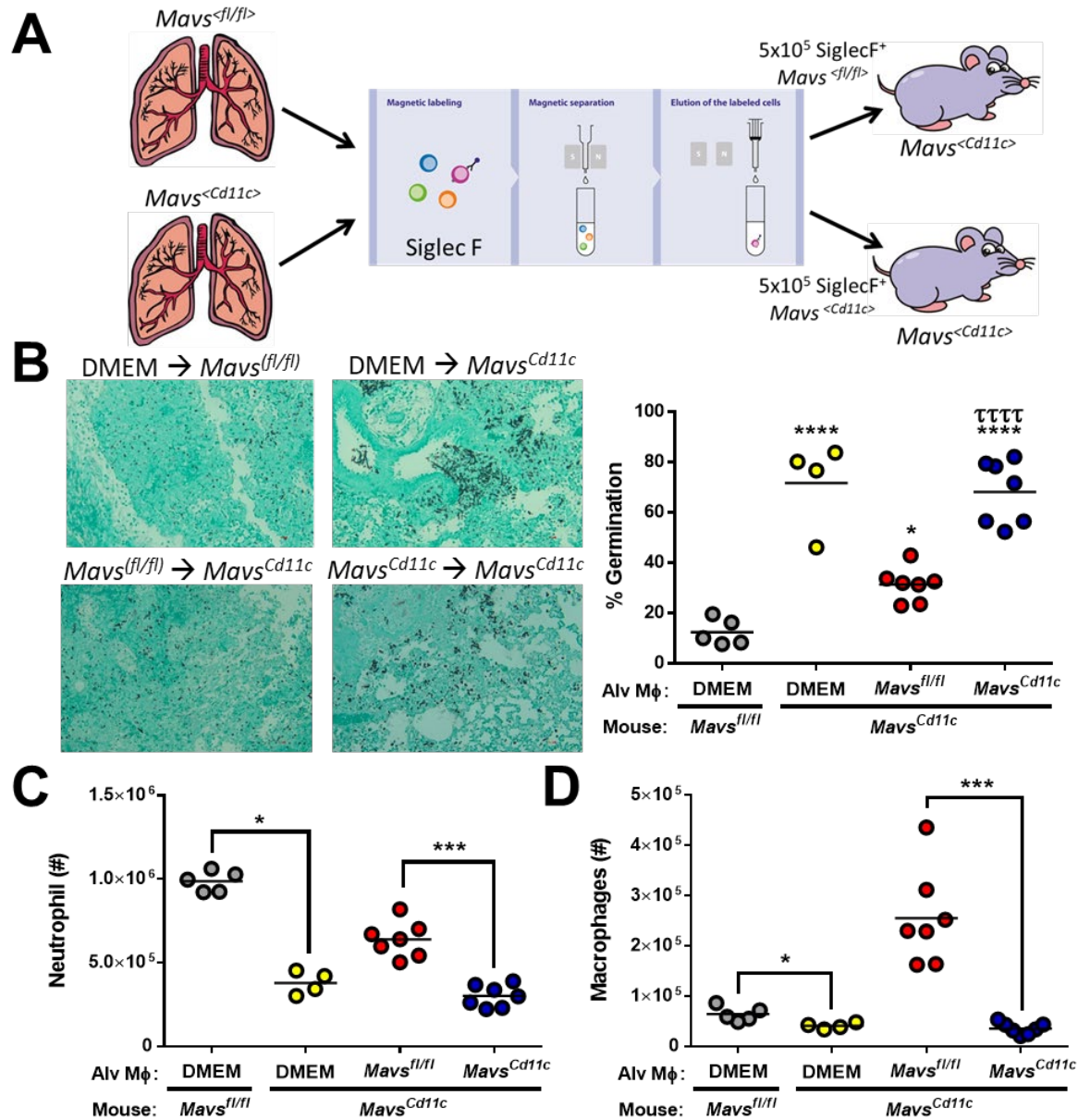
597 **ethanized and fungal germination was assessed in the lungs by GMS staining. **, P < 0.01 by**

598 **Mann-Whitney U-test. (C) At the same time point, cell differentials in the lung airways was**

599 **determined by differential staining of BALF cytopins. Statistical significance was determined**

600 **using a two-way ANOVA with a Sidak's post-test.**

601



602

603 **Figure 3. Alveolar macrophages require a *Mavs*-dependent response to maintain host resistance**

604 **against *Aspergillus fumigatus*.** (A) *Mavs*^{^{Cd11c/Cd11c}} mice were complemented with 5x10⁵

605 *Mavs*^{^{fl/fl}} or *Mavs*^{^{Cd11c/Cd11c}} alveolar macrophages (Siglec F⁺) given intranasally. One day later

606 mice were challenged i.t. with 4x10⁷ resting conidia of the CEA10 isolate of *Aspergillus fumigatus*.

607 Forty hours after *A. fumigatus* challenge mice were euthanized. (B) Fungal germination was

608 assessed in the lungs by GMS staining. Representative 20x GMS images are shown. Statistically

609 significant different were determined using a one-way ANOVA with a Tukey's post-test: *p<0.05

610 (vs. DMEM → *Mavs*^(fl/fl)), ****p<0.0001 (vs. DMEM → *Mavs*^(fl/fl)), and ττττ p<0.0005 (vs.

611 *Mavs*^(fl/fl) → *Mavs*^(Cd11c)). Neutrophils (C) and macrophages (D) in the lung airways was

612 determined by differential staining of BALF cytopins.

613

614 **Supplemental Table 1. Baseline characteristics of transplant recipients enrolled in the**
 615 **genetic association study.**

Variables	IPA (n=91)	No IPA (n=348)	P value
Age at transplantation, no (%)			
≤20 years	13 (14.3)	69 (19.8)	0.264
21 – 40 years	23 (25.3)	101 (29.0)	
>40 years	55 (60.4)	178 (51.2)	
Gender, no (%)			
Female	38 (41.8)	150 (43.1)	0.859
Male	53 (58.2)	198 (56.9)	
Underlying disease, no. (%)			
Acute leukemia	49 (53.8)	179 (51.5)	0.115
Chronic lymphoproliferative diseases	14 (15.4)	69 (19.8)	
Myelodysplastic/myeloproliferative diseases	13 (14.3)	30 (8.6)	
Chronic myeloproliferative diseases	7 (7.7)	20 (5.7)	
Aplastic anemia	6 (6.6)	17 (4.9)	
Other	2 (2.2)	33 (9.5)	
Transplantation type, no. (%)			
Matched, related	34 (37.4)	169 (48.6)	0.037
Matched, unrelated	33 (36.3)	81 (23.3)	
Mismatched, related	0 (0.0)	7 (2.0)	
Mismatched, unrelated	24 (26.4)	91 (26.2)	
Graft source, no. (%)			
Peripheral blood	80 (87.9)	287 (82.5)	0.506
Bone-marrow	10 (11.0)	53 (15.2)	
Cord blood	1 (1.1)	8 (2.3)	
Disease stage, no. (%)			
First complete remission	49 (53.8)	188 (54.0)	0.800

Second or subsequent remission, or relapse	13 (14.3)	59 (17.0)	
Active disease	29 (31.9)	101 (29.0)	
Conditioning regimen, no (%)			
RIC	68 (74.7)	228 (65.5)	0.091
Myeloablative	23 (25.3)	120 (34.5)	
CMV serostatus of donor and recipient, no. (%)			
D-/R+ or D+/R+	80 (87.9)	313 (89.9)	0.504
D-/R- or D+/R-	11 (12.1)	35 (10.1)	
Duration of neutropenia, mean days (range)†	13.1 (8 – 39)	13.5 (5 – 35)	0.460
Acute GVHD, no. (%)			
No GVHD or grades I – II	63 (69.2)	302 (86.8)	0.0002
Grades III – IV	28 (30.8)	46 (13.2)	
Antifungal prophylaxis, no. (%)‡			
Fluconazole	42 (46.2)	117 (33.6)	0.002
Posaconazole	26 (28.6)	107 (30.8)	
Other	9 (9.9)	14 (4.0)	
None or unknown	14 (15.4)	110 (31.6)	

616

617 Twenty-one patients with “possible” IPA were excluded. Chronic lymphoproliferative diseases
618 included cases of chronic lymphocytic leukemia, multiple myeloma, and B- and T-cell
619 lymphomas. Chronic myeloproliferative diseases included cases of chronic myelogenous leukemia
620 and primary myelofibrosis. Other diseases included cases of idiopathic medullar aplasia,
621 lymphohistiocytosis, hemoglobinopathies and paroxysmal nocturnal hemoglobinuria. RIC,
622 reduced intensity conditioning; CMV, cytomegalovirus; D, donor; R, recipient; GVHD, graft-
623 versus-host-disease. †Neutropenia was defined as $\leq 0.5 \times 10^9$ cells/L. ‡Other antifungals used in
624 prophylaxis included voriconazole, liposomal amphotericin B, itraconazole and caspofungin. P
625 values were calculated by Fisher’s exact probability t-test or Student’s t-test for continuous
626 variables.

627

628 **Supplemental Table 2. Demographics and clinical characteristics of the patients used for**
 629 **BAL cytokine analysis.**

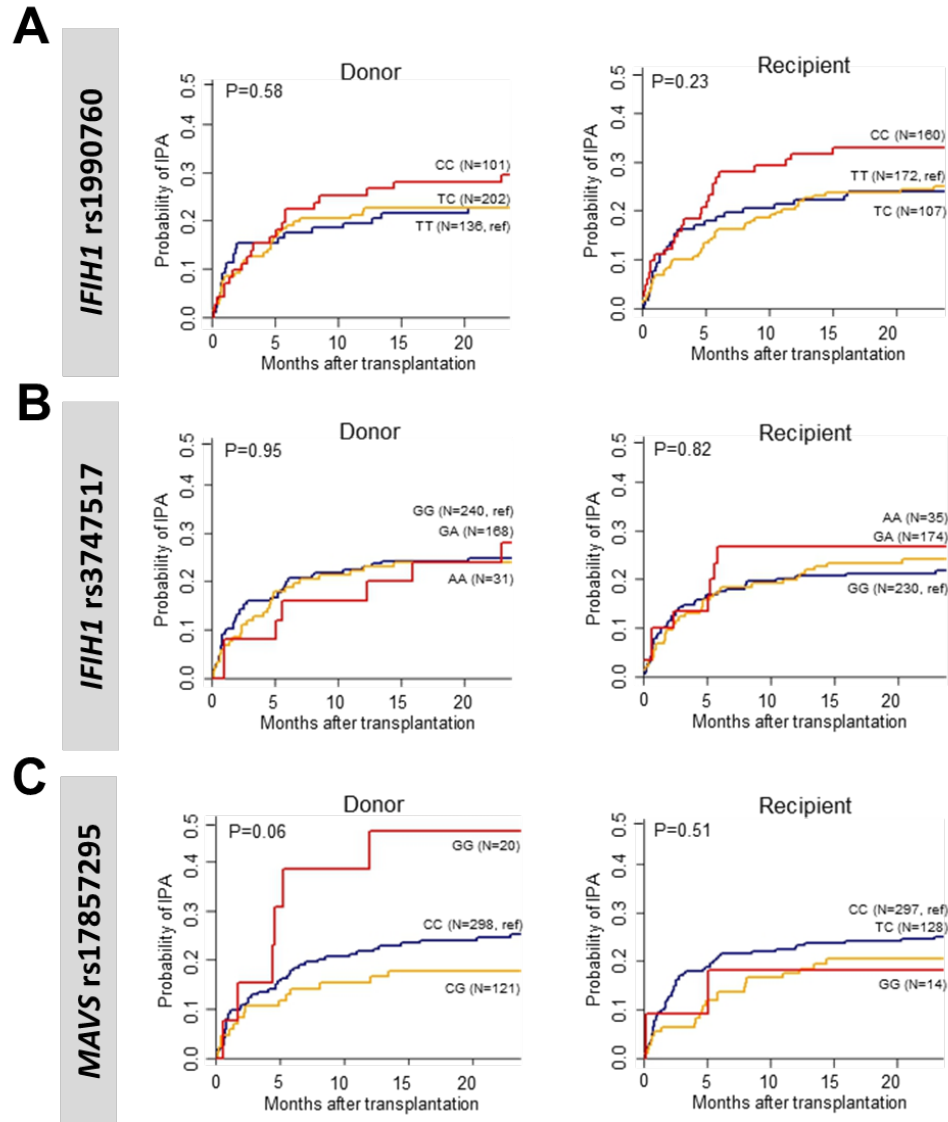
630

Variables	IPA (n=23)
Age, mean ± SD	60.9 ± 9.0
Male, no (%)	15 (65.0)
Underlying disease, no (%) *	
Acute leukemia	8 (34.8)
Allogeneic HSCT	5 (21.7)
Chronic lymphoproliferative diseases	4 (17.4)
SOT	3 (13.0)
Influenza A (H1N1)	2 (8.7)
Lung cancer	1 (4.3)
ICU admission	11 (47.8)
Mechanical ventilation	8 (34.8)
Severe neutropenia, no (%) †	11 (47.8)
BAL cell counts, mean (range) ‡	
Neutrophils	2.9 (0.0–12.6)
Lymphocytes	0.6 (0.0–53.0)
Immunosuppression, no (%)	
Steroids	10 (43.5)
Other immunosuppressive regimens	3 (13.0)
None	10 (43.5)

631

632 IPA, invasive pulmonary aspergillosis; HSCT, hematopoietic stem-cell transplantation; SOT, solid
 633 organ transplantation; ICU, intensive care unit; BAL, bronchoalveolar lavage; *SOT included
 634 lung, kidney, and liver transplants. †Severe neutropenia was defined as $\leq 0.5 \times 10^9$ cells/L. ‡Cell
 635 counts in BAL were expressed as the number $\times 10^3$ cells/ μ L. P values were calculated by Fisher's
 636 exact probability t-test for categorical variables, or by Student's t-test or Mann-Whitney U test for
 637 continuous variables.

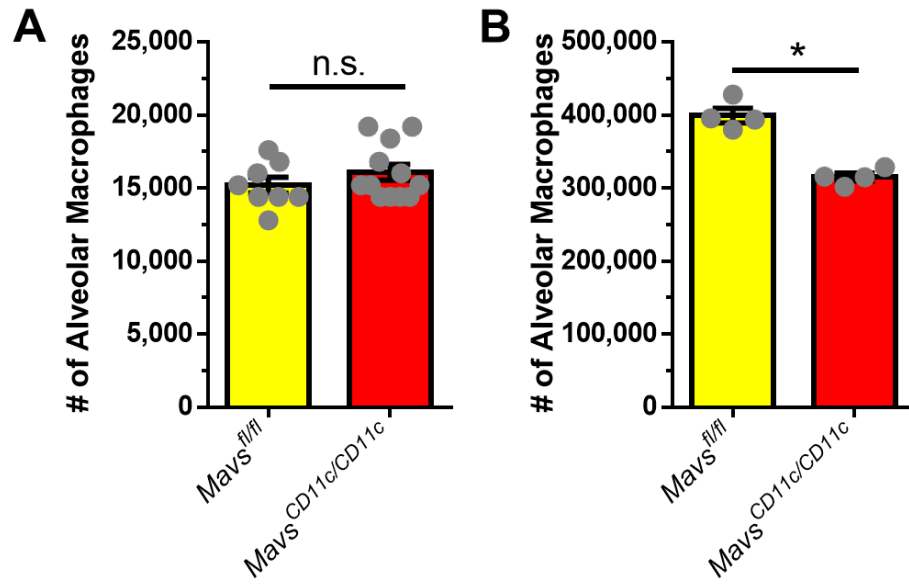
638



639

640 **Supplemental Figure 1. Individual genotype of *IFIH1* and *MAVS* polymorphisms in human**
 641 **transplant patients.** Cumulative incidence analysis of invasive aspergillosis after transplantation
 642 according to donor or recipient genotypes at rs1990760 in *IFIH1* (**A**), rs3747517 in *IFIH1* (**B**), or
 643 rs17857295 in *MAVS* (**C**) over 24 months after HSCT. Data were analyzed by two-sided Gray's
 644 test.

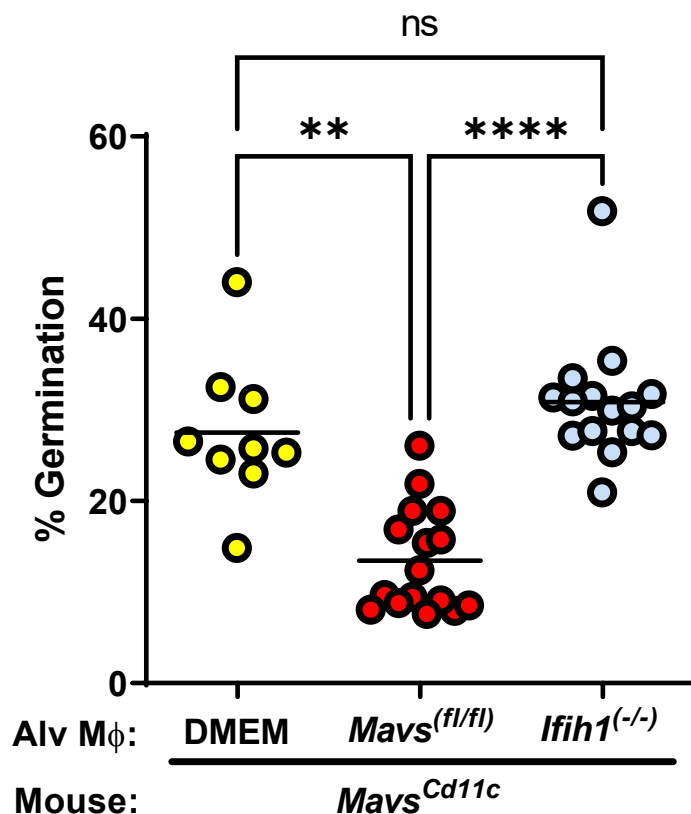
645



646
647

648 **Supplemental Figure 2. Alveolar macrophage numbers are normal in naïve mice.** BAL
649 cells from naïve *Mavs^{<Cd11c/Cd11c>}* and *Mavs^{<fl/fl>}* mice (A) or naïve *Mavs^{<Cd11c/Cd11c>}* mice given
650 5×10^5 SiglecF⁺ lung cells from naïve *Mavs^{<Cd11c/Cd11c>}* and *Mavs^{<fl/fl>}* mice 24h prior (B) were
651 collected in PBS/EDTA. Alveolar macrophage numbers were quantified by Cytospin analysis
652 and differential staining. n.s. = not significant; *, $P < 0.01$; by Mann-Whitney U-test.

653



654

655 ***Supplemental Figure 3. Alveolar macrophages require a *Ifih1*-dependent response to maintain***
656 ***host resistance against *Aspergillus fumigatus*. *Mavs*^{<Cd11c/Cd11c>} mice were complemented with***
657 ***5x10⁵ *Ifih1*^(-/-) or *Mavs*^(fl/fl) alveolar macrophages (Siglec F⁺) given intranasally. One day later mice***
658 ***were challenged i.t. with 4x10⁷ resting conidia of the CEA10 isolate of *Aspergillus fumigatus*.***
659 ***Forty hours after *A. fumigatus* challenge mice were euthanized. Fungal germination was assessed***
660 ***in the lungs by GMS staining. Data are pooled from 2 independent experiments. Each dot***
661 ***represents an individual mouse. Statistically significant different were determined using a one-***
662 ***way ANOVA with a Kruskal-Wallis post-test: **p<0.01, ****p<0.0001, ns = not significant.***