

1 **More rapid, robust and sustainable antibody responses to mRNA COVID-19 vaccine in**
2 **convalescent COVID-19 individuals**

3 Sabrina E. Racine-Brzostek^{1,2†*}, Jim Yee^{1†}, Ashley Sukhu¹, Yuqing Qiu³, Sophie Rand¹, Paul
4 Barone^{1,2}, Ying Hao⁴, He S. Yang^{1,2}, Qing H Meng⁵, Fred S Apple⁶, Yuanyuan Shi^{4,7}, Amy
5 Chadburn^{1,2}, Encouse Golden⁸, Silvia C. Formenti⁹, Melissa M. Cushing^{1,2}, Zhen Zhao^{1,2*}

6
7 ¹Department of Pathology and Laboratory Medicine, Weill Cornell Medicine, New York, NY,
8 USA

9
10 ²NewYork-Presbyterian Hospital/Weill Cornell Medical Campus, New York, NY, USA

11
12 ³Department of Population Health Sciences, Weill Cornell Medicine, New York, NY, USA

13
14 ⁴School of Life Sciences, Beijing University of Chinese Medicine, Beijing, China

15
16 ⁵Department of Laboratory Medicine, The University of Texas MD Anderson Cancer Center,
17 Houston, TX, USA

18
19 ⁶Departments of Laboratory Medicine and Pathology at Hennepin Healthcare/Hennepin County
20 Medical Center, Minneapolis, Minnesota and University of Minnesota, Minneapolis, Minnesota,
21 USA

22
23 ⁷Department of Biomedical Engineering, Shenzhen Research Institute, Beijing University of
24 Chinese Medicine, Shenzhen, Guangdong, China

25
26 ⁸ Department of Radiation Oncology, Weill Cornell Medicine, New York, NY, USA

27
28 ⁹ Department of Medicine, Weill Cornell Medicine, New York, NY, USA

29
30 †authors contributed equally to this manuscript

31 *Corresponding authors:

32 Sabrina E. Racine-Brzostek, MD, PhD
33 Email: srb9029@med.cornell.edu
34 Telephone: 212-746-0514
35 525 East 68th Street; F-705; New York, NY 10065

36
37 Zhen Zhao, PhD
38 Email: zhz9010@med.cornell.edu
39 Telephone: 212-746-2682
40 525 East 68th Street; F-701; New York, NY 10065

41
42

1 **Abbreviation:** COVID-19: Coronavirus Disease-2019; D1: 1st dose vaccine; D2: 2nd dose
2 vaccine; DAOS: days after onset of symptoms; dR: relative dissociation rate; ED: Emergency
3 Department; EUA: emergency use authorization; FDA: U.S. Food and Drug Administration;
4 HospNoVax: hospitalized acutely infected non-vaccinated cohort; NaïveVax: naive vaccinated
5 cohort; N: nucleocapsid; NYP: New York Presbyterian; OutPtNoVax: convalescent non-
6 vaccinated COVID-19 outpatients; PI: days post-infection (SARS-CoV-2); PRNT: plaque
7 reduction neutralization test; PsV: pseudovirus neutralization test; RBD: receptor-binding
8 domain; RecoVax: recovered vaccinated cohort; RFU: relative fluorescence unit; RT-PCR: real-
9 time reverse transcription polymerase chain reaction; SARS-CoV-2: severe acute respiratory
10 syndrome coronavirus 2; SD: standard deviation; SNAB: surrogate neutralizing antibody; TAb:
11 total antibody; WCMC: Weill Cornell Medical Center.

12

13 **Conflict of interest statement:**

14 ZZ has received seed instruments from ET Healthcare and sponsored research funding from ET
15 Healthcare and Roche Diagnostics. SRB has received sponsored research funding from Roche
16 Diagnostics. The remaining authors have declared that no conflict of interest exists.

1 **Abstract**

2 Longitudinal studies are needed to evaluate the SARS-CoV-2 mRNA vaccine antibody response

3 under “real-world” conditions. This longitudinal study investigated the quantity and quality of

4 SARS-CoV-2 antibody response in 846 specimens from 350 subjects: comparing BNT162b2-

5 vaccinated individuals (19 previously diagnosed with COVID-19 [RecoVax]; 49 never been

6 diagnosed [NaïveVax]) to 122 hospitalized unvaccinated (HospNoVax) and 160 outpatient

7 unvaccinated (OutPtNoVax) COVID-19 patients.

8 NaïveVax experienced a delay in generating SARS-CoV-2 total antibody levels (TAb) and

9 neutralizing antibodies (SNAb) after the 1st vaccine dose (D1), but a rapid increase in antibody

10 levels was observed after the 2nd dose (D2). However, these never reached the robust levels

11 observed in RecoVax. In fact, NaïveVax TAb and SNAb levels decreased 4-weeks post-D2

12 ($p=0.003$; $p<0.001$). For the most part, RecoVax TAb persisted throughout this study, after

13 reaching maximal levels 2-weeks post-D2; but SNAb decreased significantly ~6-months post-D1

14 ($p=0.002$). Although NaïveVax avidity lagged behind that of RecoVax for most of the follow-up

15 periods, NaïveVax did reach similar avidity by ~6-months post-D1. These data suggest that one

16 vaccine dose elicits maximal antibody response in RecoVax and may be sufficient. Also, despite

17 decreasing levels in TAb and SNAb overtime, long-term avidity maybe a measure worth

18 evaluating and possibly correlating to vaccine efficacy.

19

1 **Introduction**

2
3 As the Coronavirus Disease 2019 (COVID-19) pandemic enters its second year with more than
4 193 million confirmed cases worldwide,(1) many countries look to effective prophylactic SARS-
5 CoV-2 vaccines to help curb its spread and prevent the thousands of COVID-19 deaths reported
6 daily.(2) In December 2020, the United States Food and Drug Administration issued an
7 emergency use authorization (EUA) for two SARS-CoV-2 mRNA vaccines. Shortly thereafter,
8 New York State commenced their vaccination program by vaccinating healthcare workers.

9
10 In addition to clinical trials conducted to determine the safety and efficacy of the mRNA
11 vaccines,(3-5) additional studies began describing the serological response to the vaccines
12 under “real-world” conditions, especially with the onset of the SARS-CoV-2 variants and case
13 reports of vaccine escape.(6-13) Although the initial focus may be on overall antibody levels and
14 differences in the antibody response in previously seropositive versus seronegative vaccine
15 recipients,(6, 8, 11) other humoral antibody response factors need to be considered. Due to
16 their role in inactivating viruses and limiting the number of infected host cells, the presence of
17 neutralizing antibodies are often considered a gold standard in evaluating protective immune
18 responses.(14) Early studies describe differences in the neutralizing response post-vaccination
19 in those previously exposed versus naïve to SARS-CoV-2. (12, 15, 16) Binding avidity, the
20 intrinsic affinity of the antibody-antigen interaction, is another potential factor in evaluating the
21 quality of the antibody response. Studies show that overtime, the low avidity antibodies
22 produced early in the humoral immune response to SARS-CoV-2 mature and strengthen,
23 displaying higher intrinsic affinity.(17-19) However, this has not been studied in SARS-CoV-2
24 vaccinated individuals.

25
26 This study evaluated the dynamics of the antibody response to the BNT162b2 mRNA SARS-
27 CoV-2 vaccine, including total antibody levels (TAb), neutralizing antibody levels and antibody

1 avidity, in 49 non-infected vaccinated (NaïveVax) and 19 previously infected vaccinated
2 (RecoVax) healthcare workers. The vaccine-induced response was then compared to the
3 natural post-infection antibody response in 160 non-vaccinated outpatients with mild COVID-19
4 symptoms (OutPtNoVax) and 122 non-vaccinated COVID-19 hospitalized acutely infected
5 (HospNoVax) (20) during the early period of the pandemic.
6

1 **Results**

2 ***Participant Demographics***

3 *Vaccine study cohorts (prospective)*

4 Participant demographics of the 68 healthcare worker volunteers who had been vaccinated
5 12/18/2020-2/11/2021 with the BNT162b2 vaccine are summarized in Table 1.

6
7 RecoVax: 19 participants (27.9%), previously diagnosed with symptomatic COVID-19 either by
8 RT-PCR (7/19; 36.8%), prior serology (9/19; 47.4%) or clinically diagnosed with COVID-19
9 during the early periods of the pandemic when testing was unavailable (3/19; 15.8%). The
10 median time from COVID-19 symptom onset to 1st dose vaccine (D1) in this cohort was 262
11 days (IQR 102-275). All 19 participants tested positive for SARS-CoV-2 serology when
12 participant sera were evaluated with the Roche Elecsys[®] Anti-SARS-CoV-2 assay, which
13 identifies N protein antibodies produced by infection rather than vaccination since the
14 BNT162b2 vaccine does not include the N-protein.

15
16 NaïveVax: 50 participants, not diagnosed with COVID-19 and did not have antibodies against
17 the N-protein at the onset of the study. However, one participant was excluded due to testing
18 positive for COVID-19 by RT-PCR 6 days after the first vaccine dose. (Figure 1)

19 20 *Non-vaccinated cohorts (retrospective)*

21 HospNoVax: 122 adult patients who had presented to the ED and were subsequently
22 hospitalized at NYP/WCMC during the first month of the pandemic in New York City (3/8/2020-
23 4/7/2020). The antibodies generated by these patients would be most consistent with the initially
24 described SARS-CoV-2 virus. This comparison was prudent as multiple variants have since
25 been described (21) and the vaccine's design was based on the nucleoside-modified mRNA
26 that encodes the trimerized RBD of the early SARS-CoV-2 spike glycoprotein. (22)

1
2 HospNoVax demographics are summarized in Table 1 and further described in a previous
3 validation study.(23) The median time from COVID-19 symptom onset to the ED visit was 7
4 days (IQR 4-10). In an attempt to estimate time of infection for comparison studies with the
5 vaccinated cohorts, it was estimated that the time of infection was 5 days prior to date of
6 symptom onset.(24, 25) Therefore, the median estimated time of infection to the ED visit was 12
7 days (IQR 7-15). Also of note, 39/122 (32%) were intubated, and 32/122 (26.2%) died during
8 their hospitalization.(23)

9
10 OutPtNoVax: 160 adult patients who had presented to an outpatient clinic in person or via video
11 visit and had been tested for suspicion of prior COVID-19 infection. Specimen for SARS-CoV-2
12 serology testing occurred during the time period 4/30/2020 - 5/20/2020. As with the hospitalized
13 patients, antibodies generated by these patients would be most consistent with the initially
14 described SARS-CoV-2 virus. This outpatient cohort's demographics are summarized in Table
15 1. The median time from COVID-19 symptom onset to the outpatient visit was 47 days (IQR 43-
16 48). As with the hospitalized cohort, it was estimated that the time of infection was 5 days prior
17 to date of symptom onset. Therefore, the median estimated time of infection to the outpatient
18 visit was 52 days (IQR 48-53).

19
20 ***Quantitative antibody response during the first 2 months post-vaccination compared to***
21 ***post-infection***

22 Using regression models, it was found that HospNoVax had a gradual rise in anti-SARS-CoV-2
23 TAb antibody levels up to 33 days post-infection with the TAb RFU increasing 277 RFU/day
24 ($p<0.001$), at which point the levels began to plateau and no significant change was observed to
25 the last follow-up period of 61 days (mean 7003 RFU, coefficient 23 $p=0.735$). (Figure 2A)

26

1 NaïveVax displayed a slight lag in responding after the first dose of the vaccine in comparison to
2 RecoVax, but increased at a similar rate to that of HospNoVax post infection - at an rate of 280
3 RFU/day ($p<0.001$). At approximately day 34 post D1, TAb began its slow overall decline at
4 29.4 RFU/day until the end of the follow-up period of up to 183 days post-D1 ($p<0.001$). (Figure
5 2A)

6
7 This is in stark contrast to the robust TAb response within the first week of vaccination in
8 RecoVax. The TAb increased 1553 RFU/day for 7 days ($p<0.001$) at which point the RFU levels
9 began to plateau and then begin to wane at a slower rate than NaïveVax at 14.72 RFU/day
10 ($p<0.001$). (Figure 2A)

11
12 To complement the regression model, the TAb, neutralizing activity and avidity levels in all three
13 cohorts were analyzed by stratifying into three 2-week time periods: 0-13 days (0-2 weeks), 14-
14 27 days (2-4 weeks), and 28-42 days (4-6 weeks) after infection or D1. Data is provided in
15 Supplemental Figure 1 in the Supplement. Additional comparisons were made between the
16 vaccinated cohorts and OutPtNoVax at 4-6 weeks and 6-8 weeks post infection or D1. Data is
17 provided in Supplemental Figure 2 in the Supplement. Figure 4 displays the antibody response
18 at 4-6 weeks post infection or D1, a time period that was available for comparison in all four
19 cohorts in the retrospective and prospective arms of the study.

20
21 Of note, RecoVax consistently had higher TAb levels than NaïveVax, HospNoVax and
22 OutPtNoVax during the first 1.5 – 2 months post vaccination or infection (supplemental Figures
23 1A and 2A; Figure 4A). The RecoVax TAb was substantially increased in the first two weeks
24 post-D1 with a median TAb of 882 RFU (IQR 93-9916) and continued to rise to a median TAb of
25 9916 (IQR 7455-9916; $p=0.001$) during weeks 2-4. This remained stable during this 2 month

1 follow-up period comparison, with a median TAb of 9916 (IQR 9660-9916) and 9916 (IQR 9095-
2 9916) at 4-6 and 6-8 weeks, respectively ($p=0.801$).

3
4 Although initially NaïveVax TAb remained lower up to 4 weeks post D1 in comparison to
5 HospNoVax (TAb of 430; IQR 208-1241 versus 3414; IQR311-5843; $p<0.001$) the TAb was
6 significantly higher after D2. (Supplemental Figure 1A) At 4-6 week after D1, the NaïveVax TAb
7 was 1.2 fold higher than HospNoVax and 7.7 fold higher than OutPtNoVax. (NaïveVax TAb:
8 7919 [IQR 6832 - 9339]; HospNoVax TAb 6683 [IQR5573-8490]; OutPtNoVax Tab 1029 [164-
9 2966]; $p<0.001$). (Figure 4, Supplemental Figures 1A and 2A).

10

11 ***Qualitative antibody response during first 2 month in vaccinated versus SARS-CoV-2***
12 ***infected individuals.***

13

14 *Neutralization Antibody Levels by SNAb*

15 In all three cohorts, the neutralization activity gradually increased over time, albeit at different
16 time scales (Figure 2B, Supplemental Figure 1B; note: neutralizing activity is inversely
17 proportional to the %B/B0 in the figures). In the regression models, HospNoVax had a gradual
18 increase in neutralizing activity up to 24 days post-infection with a change in SNAb of
19 5.537 %B/B0 per day ($p<0.001$). The neutralization activity then began to wane but the change
20 was insignificant (mean 7.716%B/B0; coefficient= -0.51442; $p=0.055$)

21

22 In comparison, NaïveVax displayed slight lag generating neutralizing activity after D1 with no
23 changes from day 0-7 post-D1 (coefficient 0.1476; $p=0.36$). From days 7-30 post-D1, the
24 neutralizing activity increased at a rate of 4.304 %B/B0 per day ($p<0.001$). Then, as seen with
25 the TAB, there was loss of neutralizing activity after day 30 ($p<0.001$) at a rate of 0.115%B/B0
26 per day.

1 In comparison, RecoVax had a much more dramatic increase in neutralization activity. (Figure
2 2B) The neutralization activity improved at a rate of 9.381 %B/B0 in the first 8 days post-D1
3 (p=0.003), at which point the neutralization activity mildly began to wane at 0.008 %B/B0 per
4 day (p=0.005).

5
6 As with the TAb, RecoVax displayed consistently higher neutralizing activity across all time
7 periods when compared to the other cohorts. (Figure 4B, Supplemental Figure 1B and 2B). In
8 the first 2 weeks alone, the SNAb was 8.0 and 6.4-fold better than that of NaïveVax and
9 HospNoVax, respectively (p<0.001) (median SNAb %B/B0 were: RecoVax 12.48 IQR 1.14-
10 69.84; NaïveVax 100 IQR 95.53-100; HospNoVax 80.07 IQR 31.77-100). After the second dose
11 of the vaccine, at 4-6 weeks post-infection/vaccination, the RecoVax SNAb neutralizing activity
12 continued to remain higher than that of the NaïveVax, HospNoVax and OutPtNoVax cohorts
13 (p<0.001). (Supplemental Figures 1B,2B and Figure 4)

14
15 Of note, NaïveVax SNAb at this 4-6 week time point had improved significantly and was at the
16 levels found in HospNoVax (SNAb %B/B0 1.85 IQR 0.79-2.98 versus 1.19 IQR 0.58-4.22,
17 respectively. p=0.367). Furthermore, the NaïveVax SNAb neutralizing activity was 14.8-fold
18 higher than the OutPtNoVax (SNAb %B/B0 NaïveVax 1.85 IQR 0.79-2.98 versus OutPtNoVax
19 27.55 IQR 8.44-63.48; p <0.001) and remained 8.6-fold higher during the 6-8 week post
20 vaccination period (SNAb %B/B0 NaïveVax 3.38 IQR 1.87-6.60 versus OutPtNoVax 29.03 IQR
21 9.05-55.25; p <0.001) (Supplemental Figures 1B and 2B; Figure 4B)

22 23 Antibody avidity

24 Generally, over the initial 6-week time period, the strengthening of antibody avidity in any of the
25 three cohorts was a gradual process, as would be expected. (Figure 2C; Supplemental Figures
26 1C and 2C; note: avidity is inversely proportional to the relative dissociation rate [dR] in the

1 figures). Using regression models, it was noted that the HospNoVax cohort avidity did not
2 significantly change over time during its 61 day follow up period. (mean $8.998 \times 10^{-4}/s$; coefficient
3 $=0.0208 \times 10^{-4}$; $p=0.162$).

4
5 Likely due to the early production and then disappearance of IgM antibodies, NaïveVax
6 appeared to display a period of avidity worsening with a dR change of $3.422 \times 10^{-6}/s$ per day
7 ($p=0.02$). However at about 46 days post vaccination, avidity improved at a rate of $3.523 \times 10^{-6}/s$
8 per day ($p<0.001$)

9
10 RecoVax consistently held a stronger avidity in comparison to the other cohorts (Supplemental
11 Figures 1C and 2C, Figure 4C). Its avidity slowly but consistently improved at a rate of $0.5 \times 10^{-6}/s$
12 per day. Its consistently stronger avidity was noted at multiple time points. For example, at 4-
13 6 weeks post infection or D1 (Figure 4C), the median RecoVax avidity (median dR $4.24 \times 10^{-4}/s$,
14 IQR $4.323-5.195 \times 10^{-4}/s$) was nearly 2.5-fold higher ($p<0.001$) than that of NaïveVax ($4.24 \times 10^{-4}/s$,
15 IQR $4.323-5.195 \times 10^{-4}/s$), HospNoVax ($4.24 \times 10^{-4}/s$, IQR $4.323-5.195 \times 10^{-4}/s$) and
16 OutPtNoVax ($4.24 \times 10^{-4}/s$, IQR $4.323-5.195 \times 10^{-4}/s$). However, it should also be noted that the
17 NaïveVax, HospNoVax and OutPtNoVax held a similar avidity at all time points (e.g. $p=0.624$ at
18 4-6 weeks).

19
20 ***Comparison of antibody dynamics post-D1 and -D2 in RecoVax and NaïveVax upto ~6***
21 ***months post-vaccination***

22 Comparisons were made between the two vaccinated cohorts by analyzing the antibody levels,
23 SNAb and antibody avidity during key time periods in relation to the vaccine doses. (Figure 3)
24 The data were binned into 1) a baseline time period [median 1 day; IQR 0-6 post-D1], 2) prior to
25 D2 [median 16 days post-D1; IQR 15-21], 3) ~2 weeks post-D2 [median 35 days post-D1; IQR
26 34-36], 4) ~4 weeks post-D2 [median 49 days post-D1; IQR 49-52], 5) ~3 months post-D1

1 [median 100 days post-D1; IQR 97-105] and 6) ~6 months post D1 [median 168 days post
2 D1;IQR 164-170].

3
4
5

6 *Quantitative antibody changes over time*

7 RecoVax had TAb already present at their baseline (median 118 RFU; IQR 81.25-792 RFU) and
8 these levels rapidly increased post-D1 (9916 RFU; IQR 7154-9916; $p<0.001$), prior to D2.

9 Although there was a mild decrease in TAb at the ~6 month time point (8997 RFU; IQR 7179-
10 9916), this was statistically insignificant ($p=0.698$) and the levels remained relatively unchanged
11 throughout the study period.

12

13 This is in stark contrast to NaïveVax's TAb, which had a more gradual increase in TAb levels,
14 with most individuals (40/41; 97.6%) not displaying a positive TAb during the first week post-D1.

15 But all NaïveVax individuals did mount an antibody response in the following weeks prior to
16 receiving D2, with a median TAb of 364.5 RFU (IQR 205.3-782.3). However, this was still 27-
17 fold lower than the median TAb in RecoVax. ($p<0.001$). Maximal NaïveVax TAb levels were not
18 achieved until 2 weeks post-D2 (median 7919 RFU; IQR 7253-9170) but this TAb decreased by
19 over 50% overtime, with a median TAB 2706 RFU (IQR 1667-4511; $p<0.001$) at ~6 months
20 post-D1 and were 3.3-fold lower compared to RecoVax ($p<0.001$) at this time point. (Figure 3A)

21

22 As a comparison sub-study to an EUA platform, these results were confirmed by Elecsys Anti-
23 SARS-CoV-2-S-antigen assay and similar patterns in the antibody response post-vaccination
24 were observed. RecoVax had detectable levels of the anti-S total antibody prior to vaccination
25 and following D1 increased from a median baseline of 47.45 U/mL (IQR 19.59-148.7) to above
26 the upper limit of detection (>2500 U/mL). The RecoVax cohort median remained at this level at

1 ~6 months post-D1; however three individuals had levels below 2500 U/mL (median 2500 U/mL
2 (IQR 2400 to >2500). In contrast, NaïveVax antibody levels gradually increased over time, with
3 a median level of 37.77 U/mL (IQR 12.93-80.45 U/mL) prior to D2. These levels were boosted
4 after D2 to a median of 2177 U/mL (IQR 1605 - >2500 U/mL) 2 weeks post-D2 ($p < 0.001$).
5 However, levels decreased to a median of 720U/mL (IQR 565-1269; $p < 0.001$) at ~6 months
6 post-D2. Despite a robust increase after D2, the anti-S total antibody levels consistently
7 remained lower than those of RecoVax ($p < 0.001$ at all time points) (Figure 3D).

8

9 *Neutralization Antibody changes over time in vaccinated subjects*

10 In comparing the SNA_B levels in NaïveVax to RecoVax, RecoVax displayed neutralizing
11 capabilities at baseline, with a median SNA_B of 65.42 %B/B₀ (IQR 19.47-84.59), which is 1.5-
12 fold greater than NaïveVax (100%B/B₀; IQR 96.09-100; $p < 0.001$). As described previously, the
13 neutralization capability seen in RecoVax improved dramatically after D1, prior to D2
14 (0.6600 %B/B₀; IQR 0.4150-2.955; $p < 0.001$). Although neutralizing capability remained
15 unchanged through the ~3 month period (0.7900 %B/B₀; IQR 0.4741-1.217; $p = 0.144$), at
16 ~6month post D1, neutralizing capability began to wane (1.610 %B/B₀; IQR 1.359-4.424;
17 $p = 0.002$).

18

19 Neutralizing activity was 81-fold lower in NaïveVax prior to administration of the second vaccine
20 dose (median 53.57 %B/B₀; IQR 31.29-77.95; $p < 0.001$). Although the neutralizing activity of
21 NaïveVax also improved with time, it remained 5.2-fold lower than RecoVax at 4 weeks post-D2
22 (3.380%B/B₀; IQR 1.8015-6.603; $p < 0.001$), 6.1-fold lower ~3 months post-D1 (4.867%B/B₀;
23 IQR 2.544-11.17; $p < 0.001$) and 10.8-fold lower ~6 months post-D1 (17.35%B/B₀; IQR 10.81-
24 28.76; $p < 0.001$). Also of note, neutralization activity began to wane in NaïveVax at 4 weeks post
25 D2 and continued to decrease at the ~6month time point ($p < 0.001$). (Figure 3B)

26

1 *Antibody avidity changes over time in vaccinated subjects*

2 When comparing the avidity levels between RecoVax and NaïveVax cohorts, RecoVax had
3 higher avidity levels prior to D2, twice that of NaïveVax (dR:4.372/s [IQR 3.904-6.465] versus
4 9.018/s [IQR 6.758-10.44] $\times 10^{-4}$ /s; $p < 0.001$). This gap in avidity levels between the two cohorts
5 was observed over all time periods upto ~3months. At 4 weeks post-D2, RecoVax still
6 maintained a median avidity twice that of NaïveVax (dR:4.463/s [IQR 3.623-6.000] versus
7 9.605/s [IQR 8.773-10.29] $\times 10^{-4}$ /s; $p < 0.001$) and 1.8-fold at 3 months post-vaccination (dR:3.889
8 [IQR 3.464-4.890] versus 7.000 [IQR 6.335-8.380] $\times 10^{-4}$ /s; $p < 0.001$). However, at ~6months
9 post D1, the gap in avidity closed with RecoVax avidity at 4.432 (IQR 3.390-5.642) $\times 10^{-4}$ /s and
10 NaïveVax avidity at 5.362 (IQR 4.509-5.977) $\times 10^{-4}$ /s ($p = 0.115$). (Figure 3C)

11

12 **Discussion**

13

14 The following conclusions can be drawn from our study. First, RecoVax individuals exhibited a
15 rapid anamnestic SARS-CoV-2 TAb and anti-S antibody response within days after D1 and
16 these levels persisted up to the ~6-month post-vaccination follow-up period. Second, the
17 antibody response did not further increase after the second vaccine dose in this population. This
18 is in contrast to the other cohorts, where TAb levels never fully matched RecoVax and in some
19 cases decreased. Third, neutralizing activity was present at baseline in RecoVax and remained
20 significantly higher in RecoVax versus the other cohorts, reaching a maximal plateau after D1
21 with no significant change until the ~6-month follow-up period. However, at this point RecoVax
22 SNAbs began to wane ($p = 0.002$). (Figures 2-3B) Finally, RecoVax had twice the avidity of the
23 other cohorts in the first two weeks after the immunizing event and sustained this level of avidity
24 throughout the study follow-up period. Nonetheless, NaïveVax's continued avidity maturation
25 achieved a similar avidity level by ~6 months post-D1. Overall, the results of our study build

1 upon and contribute to a growing body of evidence that vaccination generates similar, if not
2 better, antibody levels to natural SARS-CoV-2 infection.(9, 12, 15, 16, 26)

3
4
5 To our knowledge, this is the first longitudinal study to compare avidity in these four included
6 study populations. Antibodies with low intrinsic avidity are initially produced in the early humoral
7 immune response and require time to mature and strengthen. Thus, it was not unexpected to
8 find that NaïveVax, OutPtNoVax and HospNoVax generated antibodies with similarly lower
9 avidity than those of RecoVax. Although it was expected that RecoVax at baseline had
10 significantly higher antibody avidity (Figures 2-3C), it was notable that the antibodies induced by
11 the vaccine showed robust avidity and the rate of avidity maturation was greater in NaïveVax in
12 comparison to RecoVax (ΔdR 0.03523 versus $0.005645 \times 10^{-4}/s$ per day), allowing NaïveVax
13 avidity to match that of RecoVax at ~6months post D1. (Figure 2C and 3C) This observation,
14 together with the knowledge that avidity continues to mature overtime (23), warrants additional
15 investigation on whether long term avidity plays a clinically significant role in protection against
16 SARS-CoV-2.

17
18 The immunological correlation of protection or thresholds required for vaccine efficacy against
19 SARS-CoV-2 infection are not well defined. (27) Although not clinically recommended by the
20 FDA(28), studies do attempt to correlate antibody levels to protection against the virus or
21 disease when monitoring the immune response to vaccination, as antibody assays are generally
22 convenient to perform. However, these may be non-mechanistic correlations and by no means
23 absolute correlates. (29) Recently, studies (30, 31) have begun to define the relationship
24 between SARS-COV-2 vaccine efficacy and neutralizing antibody titers by demonstrating
25 significant correlation between vaccine efficacy and vaccine-induced neutralizing antibody
26 activity. Neutralizing antibodies bind to viral targets and block entry into the cell, preventing

1 infection of the cell with the virus. In this light, antibody avidity should not be discounted, as it is
2 the binding strength of an antibody-antigen complex and could define the quality of the immune
3 response.(32) Although avidity is typically low immediately after infection or vaccination, it
4 undergoes maturation over a period of months and could reflect a better functioning active
5 antibody pool. Therefore, future studies should be attempted in correlating antibody avidity with
6 vaccine efficacy as antibody avidity may be a reliable and stable long term surrogate marker of
7 immunological memory for infection. (33)

8
9 Such studies could also address concerns about the persistence and protective strength of the
10 antibodies generated both by vaccination and natural infection. (34-36) There may be concern
11 over antibody levels in those with mild COVID-19 symptoms (i.e. OutPtNoVax) as this
12 population has overall lower antibody levels in comparison to individuals with more severe
13 symptoms (37) (i.e. HospNoVax) or those that been vaccinated (Figure 4). Unfortunately, this
14 study did not have adequate long-term data for avidity regression modeling in the OutPtNoVax
15 cohort but early studies do reveal that avidity matures up to 1 year post infection.(26) Together
16 with the proper future correlative studies, it may become reassuring that avidity in the
17 OutPtNoVax, HospNoVax and NaïveVax have similar avidity (Figure 4C) and may continue to
18 further strengthen over time, as demonstrated in NaïveVax, when avidity reached equivalent
19 levels to that of RecoVax by ~6months post D1 (Figure 3C).

20
21 Similar concerns over poor antibody production and protection against SARS-CoV-2 have
22 arisen in at risk populations, such as those with hematological malignancies or transplant
23 patients (38-40). Although these at risk individuals mount a poorer quantitative antibody
24 response, it may be of interest to study their antibody avidity maturation profile and determine
25 whether it could offer any protection against the virus.

26

1 **Limitations**

2 Our study has several limitations. First, selection bias may exist in both the prospective and
3 retrospective studies. As the HospNoVax and OutPtNoVax specimen in the study were
4 retrospectively collected, the study was reliant on pre-existing data and remnant specimens.
5 During this early time period of the pandemic in New York City, most hospitalized individuals
6 were older, with more severe symptoms and predominately male,(41)which was reflected in our
7 cohort (median age 67.5 years, IQR 54.0-77.0; 66% Male). The prospective study participants
8 were younger, approaching or at middle age (overall median age 44.4 years, IQR 33.6-57.4)
9 and predominantly female (74%). Indeed, the better population for comparison are OutPtNoVax,
10 but there was insufficient data to perform a direct comparison at those similar timepoints
11
12 Additional bias may exist with the prospective vaccination study volunteers, as study
13 participants were healthcare workers (eligible for the vaccine in late December 2020 to January
14 2021), possibly reflecting a study population with fewer comorbidities. Together with the small
15 sample size (n=60), these results may not represent those of the general population.(42, 43)
16
17 Second, given the exploratory nature of the study and limited sample size, post-hoc adjustments
18 were not performed. This small study size also prevented multivariate analysis to look for
19 possible confounders between the cohorts. For example, a previous study found SNAb to be
20 age associated in SARS-CoV-2 infected individuals.(42) The association of age with TAb, SNAb
21 and avidity was explored in this study, but no association was found, likely due to the
22 predominately middle-aged cohort in this study.
23
24 Thirdly, the time period between symptom onset and antibody testing in HospNoVax is arguably
25 not an exact time equivalent to the time period of antibody testing post-vaccination as the
26 incubation period and symptom onset post-infection can be up to 14 days.(24) However, it has

1 been reported that the median incubation period is 5.1 days (25) and this was added to the
2 OutPtNoVax and HospNoVax's time since symptom onset in an attempt to overcome lead time
3 bias. Additionally, the follow-up time for this cohort was limited compared to the vaccinated
4 cohorts.
5 Finally, this study focused on the humoral response to the SARS-CoV-2 vaccine, as vaccine
6 development strategies are designed to maximize this response. However, the T- cell
7 compartment also plays a major role in the immune response(44). SARS-CoV-2 infection has
8 been shown to induce the T-cell immune response, which play a major role in preventing severe
9 disease.(45, 46) Although this is beyond the scope of this study the interplay between the T-
10 cellular response and humoral response may also provide important insights into better
11 correlative studies for vaccine effectiveness.

12

13 **Conclusions**

14 Our data suggest that two doses of the mRNA vaccine are warranted in NaïveVax individuals to
15 achieve a similar early antibody response to RecoVax individuals. Individuals with mild COVID-
16 19 symptoms (OutPtNoVax) overall maintained lower antibody levels compared to the
17 vaccinated cohorts, especially warranting vaccination despite prior infection. Furthermore, as
18 the vaccine elicited a maximal antibody response after only one vaccine dose in RecoVax, one
19 dose may be sufficient in this population. Although longer term longitudinal studies are required,
20 the persistent TAb and avidity in this population may support a single dose vaccination strategy.
21 This would be a resource-conscious solution to help address global vaccine shortages.
22 Monitoring individuals for antibody titers long term (as is done with the Hepatitis B or MMR
23 vaccines), as well as monitoring neutralizing activity and avidity(23), may be prudent in
24 determining the vaccine efficacy and the need for future booster vaccinations.

25

1 **Materials and Methods:**

2
3 **Sources of serum specimens and data acquisition**

4 The standard practice for serum collection and storage in the clinical laboratories involves
5 collecting venous blood into a serum separator tube and centrifuging the specimen (1500g for 7
6 minutes) within 2 hours of collection to separate cells from serum. Patient and study participant
7 serum samples after routine clinical testing were stored at -80°C until further analysis was
8 performed.

9 *Retrospective study of COVID-19 outpatients and hospitalized patients*

10 The retrospective study included a cohort of 122 adult patients who presented to the ED and
11 were subsequently hospitalized at NYP/WCMC from 3/8/2020 to 4/7/2020. This cohort was
12 described in a previous assay validation study.(23) All patients in this cohort tested positive for
13 SARS-CoV-2 by real-time reverse transcription polymerase chain reaction (RT-PCR) within one
14 day of the ED visit. In total, 317 remnant serum samples were collected and frozen during the
15 hospitalization for future analysis.

16 Another cohort from this retrospective study included 160 convalescent COVID-19 patients who
17 were seropositive in the outpatient setting at NYP/WCMC from 4/30/2020 to 5/20/2020. All
18 participants in this study were adult, non-pregnant patients who were not hospitalized
19 (previously or at the time of antibody testing) due to SARS-CoV-2 infection. In total, 160
20 remnant serum samples were collected and frozen for this future analysis.

21
22 Demographic data and date of symptom onset was collected from the electronic medical record
23 for both cohorts (Allscripts, Chicago, IL).

24

1 *Prospective study of vaccinated individuals*

2 Sixty-one healthcare workers at NYP/WCMC vaccinated with two doses of the BNT162b2
3 SARS-CoV-2 mRNA vaccine (Pfizer, New York, NY) were included in this study. (Figure1)
4 Participants were asked to donate blood samples for serologic analysis within a week of the 1st
5 dose of the vaccine (D1), approximately 2 weeks and 4 weeks after each vaccine dose, and
6 approximately 3 and 6 months after D1. Although not all of the 61 participants provided samples
7 at all time points, all specimens were considered for analysis in this study, as indicated in the
8 figures and tables. A total of 326 serum samples were prospectively collected 12/31/2020-
9 7/1/2021. (Figure 1)

10 An additional 7 participants from the NYP-WELCOME study (47) were also included in the
11 prospective aspect of this study. Forty-three specimens had been collected from this cohort
12 during the time period 12/11/2020-7/6/2021 and frozen in the Weill Cornell Medicine BioBank for
13 future analysis. (Figure 1)

14 ***SARS-CoV-2 total RBD antibody, surrogate neutralizing antibody assay and avidity***
15 ***assays***

16 The SARS-CoV-2 total receptor-binding domain (RBD) antibody (TAb), surrogate neutralizing
17 antibody (SNAb) and avidity were used to measure serum antibody levels on the TOP-Plus
18 (Pylon 3D analyzer; ET HealthCare, Palo Alto, CA), and were previously described. (23)

19
20 The TAb assay measures the overall interaction between SARS-CoV-2 antibodies and the RBD
21 of the virus spike (S) protein, with a read out of sample relative fluorescence unit (RFU).

22
23 SNAb is a competitive binding assay, based on the anti-SARS-CoV-2 antibody-mediated
24 inhibition of the interaction between the ACE2 receptor protein and the RBD. The assay readout

1 is the percentage of RBD-ACE2 binding [$\%B/B_0$; (sample RFU/negative control RFU) *100%],
2 which is inversely associated with neutralizing activity. It was previously shown (23) to correlate
3 well with two established SARS-CoV-2 virus neutralization tests (plaque reduction neutralization
4 test and pseudo virus neutralization test) and was used in this study to evaluate the
5 neutralization activity of the antibodies generated post-vaccination and post-infection in ED
6 COVID-19 patients in this study.

7
8 The avidity assay provides the calculated relative dissociation rate (dR; 1/s). This measurement
9 is inversely associated with antibody avidity. A higher intrinsic binding strength of a paratope to
10 RBD or addition of paratopes to the antibody structure results in a higher binding strength,
11 which results in a lower dR of the antibody-RBD pair. The assay had good correlation with the
12 Bio-Layer Interferometry avidity assay, another assay used for measuring antibody avidity.(23)

14 **The Roche Elecsys Anti-SARS-CoV-2S- and N-antigen assays**

15 The Elecsys[®] Anti-SARS-CoV-2S and Anti-SARS-CoV-2 electrochemiluminescence
16 immunoassay were used to detect antibodies to SARS-CoV-2 spike (S) RBD and the
17 nucleocapsid (N) antigen, respectively, in the serum samples. These were performed on the
18 Roche Cobas e411 (Roche Diagnostics, Indianapolis, IN). These assays received EUA approval
19 from the United States Food and Drug Administration (FDA). The Anti-SARS-CoV-2S Elecsys[®]
20 assay was used for comparison with the TOP-TAb assay. The Anti-SARS-CoV-2 assay was
21 used in identifying or confirming previously infected individuals in the vaccinated cohort.

23 **Statistical analysis**

1 The trend of antibody level overtime was described by applying Muggeo’s method of estimating
2 regression models with unknown break-points to estimate the changing time points of the
3 trends.(48) A linear mixed effect model was fitted for each segment of time based on estimated
4 break-point to show the trend for the time period between break-points. As indicated,
5 coefficients and p-values from regressions were reported. To visualize the trend, trajectories
6 were plotted via a smooth line with loess method for each group. Only data up to day 61 post-
7 infection were available for this analysis in HospNoVax and comparisons were only performed
8 up to this time period.

9 Wilcoxon rank-sum and signed-rank tests were used between numerical variables and paired
10 comparison, respectively. Kruskal-Wallis test was used for the comparison of three or more
11 groups. Bivariate associations between outcome variables and clinical parameters were
12 evaluated using Fisher’s exact test or chi-squared test, as appropriate. Descriptive data were
13 presented as median with interquartile range (IQR) unless otherwise specified. $p < 0.05$ were
14 considered significant.

15 Analyses were performed in statistical programming language R version 4.0.2 (2020-06-22) or
16 in GraphPad Prism Version 9.1.2 (GraphPad Software, La Jolla, CA).

17 **Study approval**

18 The retrospective (IRB#20-03021671) and prospective (IRB#20-11022929; IRB#20-04021831)
19 studies in this manuscript were performed at NewYork–Presbyterian Hospital/Weill Cornell
20 Medical Center (NYP/WCMC) with approval by the Institutional Review Board of Weill Cornell
21 Medicine (WCM).

22

1 **Author contribution:**

2 SRB for conceptualization, investigation, supervision of project, data analysis and writing the
3 manuscript; JY for sample collection, performing serology experimentation and editing the
4 manuscript; AS for sample collection and performing serology experimentation; YQ for statistical
5 analysis and editing the manuscript; MK and RZ for the assay development and providing
6 analytical data analysis; SR for data collection, data collection design and general administrative
7 support; PB for recruitment efforts; YH for sample collection; HSY for conceptualization and
8 editing the manuscript; FSA and QHM for conceptualization and editing the manuscript; YYS for
9 conceptualization; AC for editing the manuscript; EG and SF for design and implementation of
10 the NYP-WELCOME study and editing of the manuscript; MMC for supervision of project and
11 editing the manuscript; ZZ for conceptualization, investigation, supervision of the project, data
12 analysis, and editing the manuscript.

13 **Acknowledgement:**

14 This research was partially funded by a COVID-19 research grant from Weill Cornell Medicine
15 (Cushing). The NYP-WELCOME study was supported by Weill Cornell Medicine Competitive
16 Research Funding (Formenti). ET-Healthcare provided seed instruments and reagents (Zhao).
17 Roche Diagnostics provided support via Investigator initiated research funding (Racine-Brzostek
18 and Zhao).

19 The authors would like to acknowledge Courtney Johnson-Williams, Jennifer Lopez, William
20 Rodriguez, Rosanna Tineo and Jasmine Brown for their assistance with phlebotomy services.
21 We also appreciate the administrative assistance of Sandra Aranibar-Atristain and Rita Frenzel
22 and Maria Salpietro for her assistance in her role as the Director of the Weill Cornell Institutional
23 Biobank.

24

1
2
3
4
5
6
7
8
9
10
11
12
13
14
15
16
17
18
19
20
21
22
23
24
25
26
27
28
29
30
31
32
33
34
35
36
37
38
39
40
41
42

Figure legends

Figure 1

Inclusion and exclusion criteria of the prospective vaccination arm of the study

Figure 2

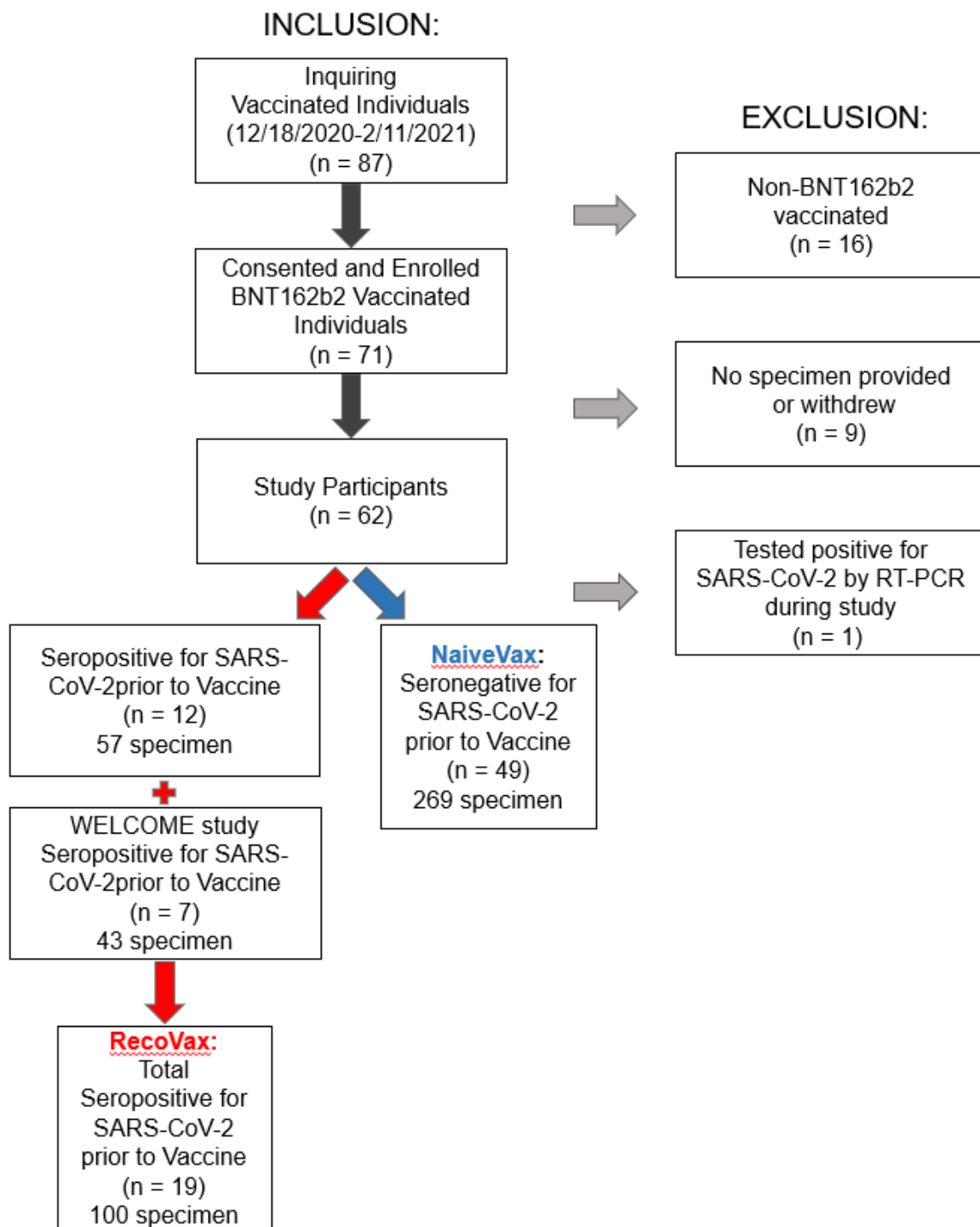
Dynamics of the anti-SARS-CoV-2 antibody response after vaccination or infection utilizing regression models. TAb (A), SNAbs (B) levels and avidity (C) are displayed over time. A total of 686 data points were plotted from 19 RecoVax individuals (red), 49 NaïveVax individuals (blue) and 122 HospNoVax patients (green). All participants received the second dose 21 days after the 1st dose. The trend of antibody level overtime was described by applying Muggeo's method of estimating regression models with unknown break-points to estimate the changing time points of the trends.

Figure 3

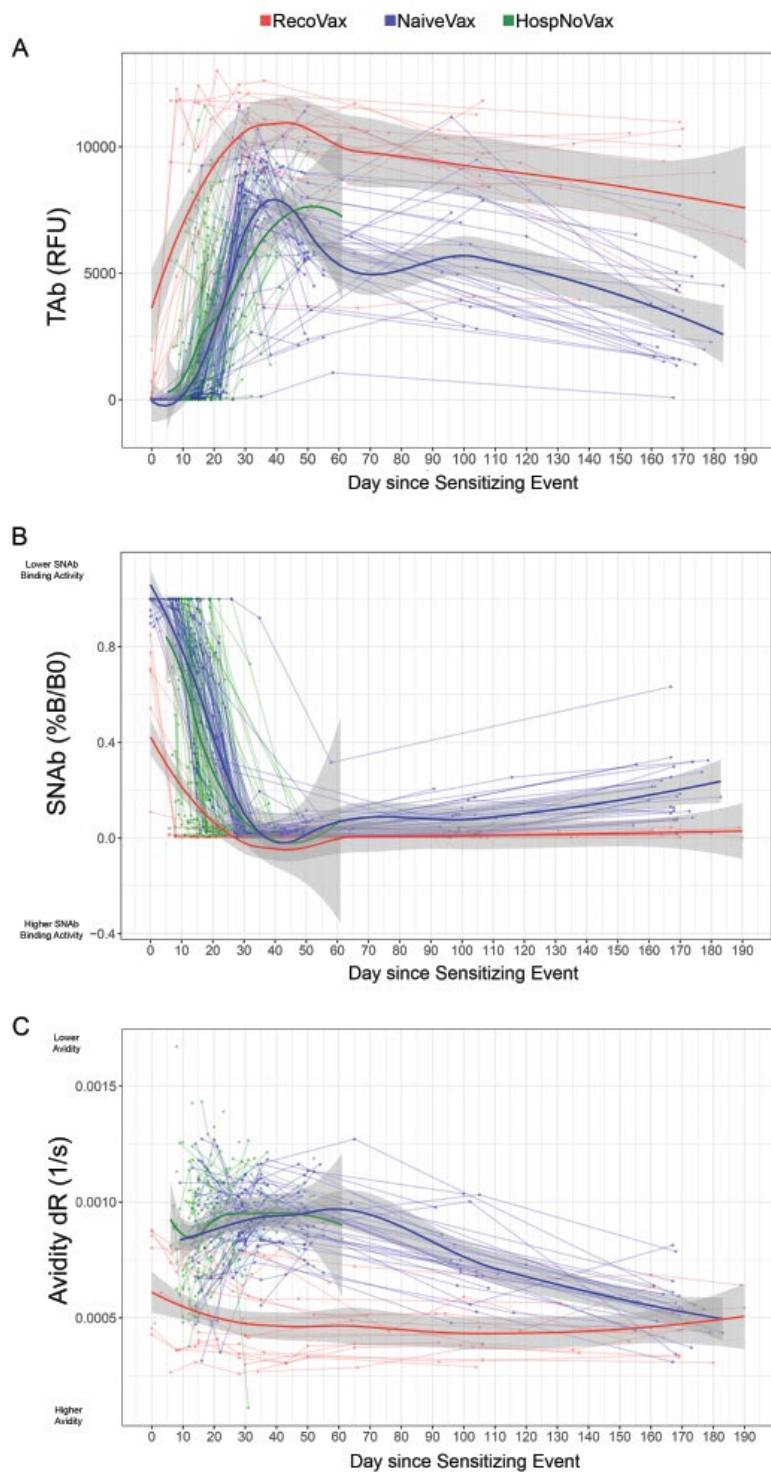
TAbs (A) antibody response, SNAbs (B) levels, avidity (C) and Anti-S (D) after RecoVax individuals (red circle), NaïveVax individuals (blue triangle) after first (D1) and second (D2) doses of the vaccine. Comparisons were made at baseline (median 1 day; IQR 0-6days post D1), prior to D2 (median 16 days post D1; IQR 15-21), ~2 weeks post D2 (median 35 days post D1; IQR 34-36), ~4 weeks post D2 (median 49 days post D1; IQR 49-52), ~3 months post D1 (median 100 days post D1; IQR 97-105) and ~6 months post D1 (median 168 days post D1; IQR 164-170) Horizontal black lines represent median values and whiskers represent 95% CI. Wilcoxon rank-sum was used for paired comparison while Kruskal-Wallis test was used for the comparison of three or more groups.

Figure 4

TAbs (A) antibody response, SNAbs (B) levels and avidity (C) after 4-6 weeks after vaccination or infection in RecoVax individuals (red circle), NaïveVax individuals (blue triangle), HospNoVax (green square) and OutPtNoVax (violet diamond). Horizontal black lines represent median values and whiskers represent 95% CI. Wilcoxon rank-sum was used for paired comparison while Kruskal-Wallis test was used for the comparison of three or more groups.



1
2 **Figure 1**
3 Inclusion and exclusion criteria of the prospective vaccination arm of the study



1
2 **Figure 2**
3 Dynamics of the anti-SARS-CoV-2 antibody response after vaccination or infection utilizing regression
4 models. TAb (A), SNAb (B) levels and avidity (C) are displayed over time. A total of 686 data points were
5 plotted from 19 RecoVax individuals (red), 49 NaiveVax individuals (blue) and 122 HospNoVax patients
6 (green). All participants received the second dose 21 days after the 1st dose. The trend of antibody level
7 overtime was described by applying Muggeo's method of estimating regression models with unknown
8 break-points to estimate the changing time points of the trends.

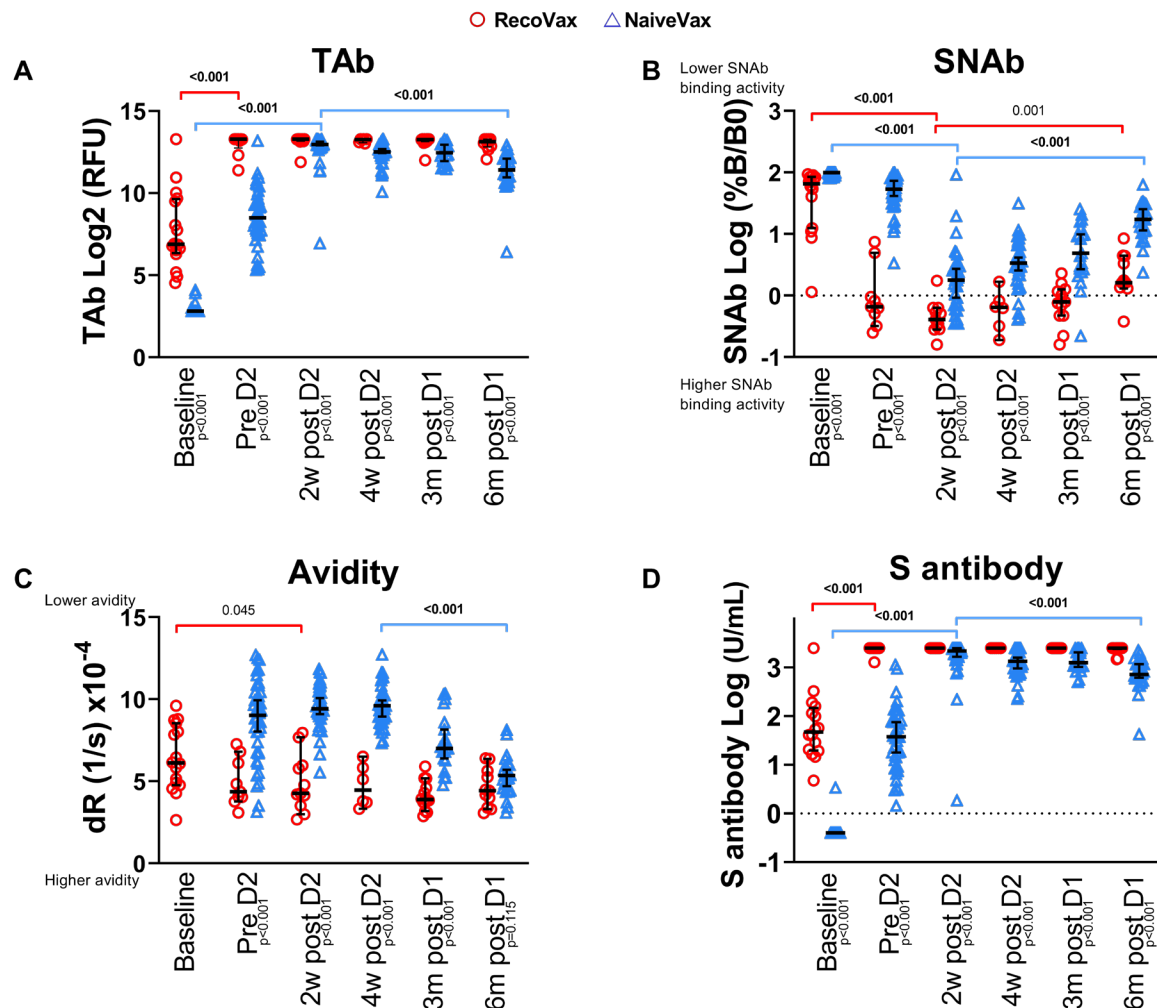


Figure 3

1
2
3 TAb (A) antibody response, SNAb (B) levels, avidity (C) and Anti-S (D) after RecoVax individuals (red
4 circle), NaïveVax individuals (blue triangle) after first (D1) and second (D2) doses of the vaccine.
5 Comparisons were made at baseline (median 1 day; IQR 0-6days post D1), prior to D2 (median 16 days
6 post D1; IQR 15-21), ~2 weeks post D2 (median 35 days post D1; IQR 34-36), ~4 weeks post D2
7 (median 49 days post D1; IQR 49-52), ~3 months post D1 (median 100 days post D1; IQR 97-105) and ~6
8 months post D1 (median 168 days post D1; IQR 164-170) Horizontal black lines represent median values
9 and whiskers represent 95% CI. Wilcoxon rank-sum was used for paired comparison while Kruskal-Wallis
10 test was used for the comparison of three or more groups.
11

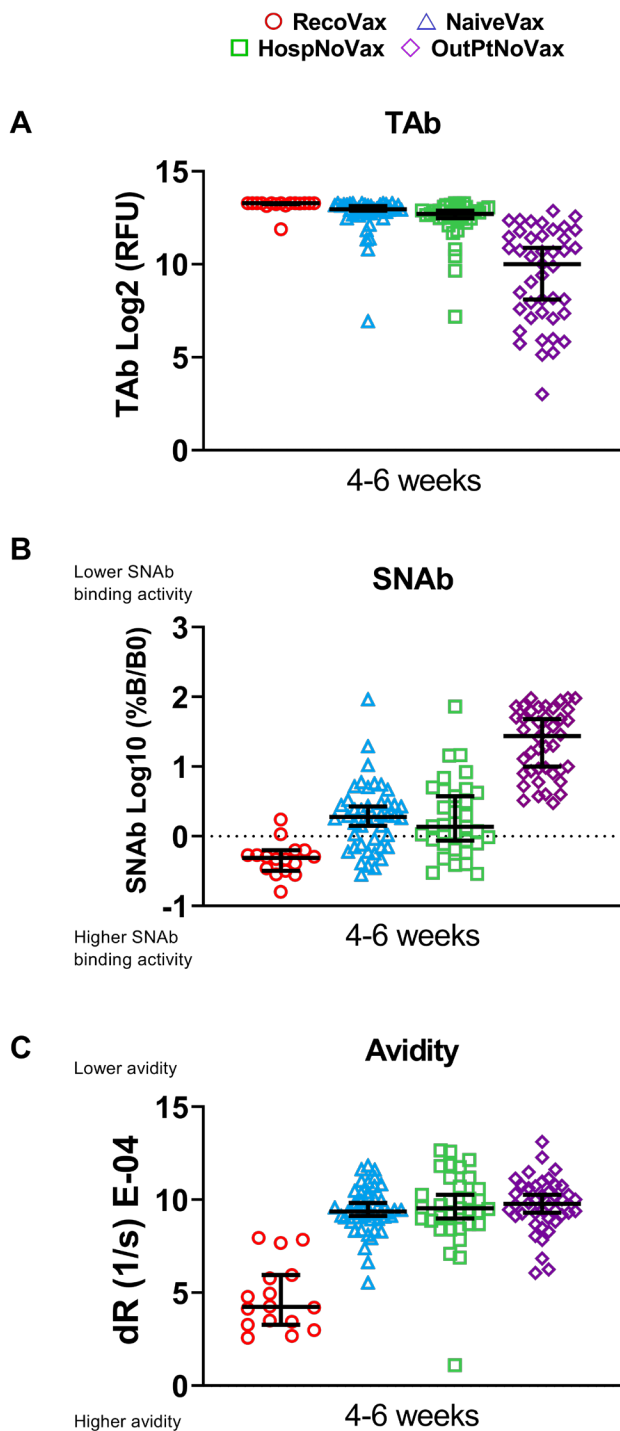


Figure 4

TA**b** (A) antibody response, SNAb (B) levels and avidity (C) after 4-6 weeks after vaccination or infection in RecoVax individuals (red circle), NaïveVax individuals (blue triangle), HospNoVax (green square) and OutPtNoVax (violet diamond). Horizontal black lines represent median values and whiskers represent 95% CI. Wilcoxon rank-sum was used for paired comparison while Kruskal-Wallis test was used for the comparison of three or more groups.

Table 1. Demographics of vaccinated cohorts compared to hospitalized COVID-19 patient cohort

Characteristic	Vaccinated cohorts		Non-Vaccinated cohorts	
	Previously COVID positive (RecoVax) (n=19)	Previously COVID negative (NaïveVax) (n=49)	Hospitalized COVID-19 patients (HospNoVax) (n=122)	Outpatient COVID-19 patients (OutPtNoVax) (n=160)
Age, y				
Mean (SD)	42.5 (11.6)	46.3 (13.3)	65.4 (15.9)	43.6 (12.0)
Median (IQR)	40.6 (32.5 – 55.2) ^W	45.8 (34.4 – 58.3) ^W	67.5 (54.0-77.0)	43.0 (34.0-51.1)
Sex - No. (%)				
Female	11(58) ^F	39 (80) ^F	42 (34)	110 (69)
Male	8 (42) ^F	10 (20) ^F	80 (66)	50 (31)
DAOS to first dose vaccination, days, Median, IQR	262 (101.5-275.0)	n/a	n/a	n/a
DAOS to ED visit, days, Median, IQR	n/a	n/a	7 (4-10)	n/a
DAOS to outpatient visit, days, Median, IQR	n/a	n/a	n/a	47 (43-48)

Test: W: Wilcoxon rank-sum test p = 0.2693; F: Fisher's exact test p=0.1231

DAOS: days after onset of symptoms

REFERENCES

1. Dong E, Du H, and Gardner L. An interactive web-based dashboard to track COVID-19 in real time. *Lancet Infect Dis.* 2020;20(5):533-4.
2. WHO. Coronavirus Disease Dashboard. URL: https://covid19.who.int/?gclid=CjwKCAiAtK79BRAIEiwA4OskBtAbOw6T6wNgUS76dyazGbUP3AdVbHz7JZLTG4xKNRk_r3W9C9NQ-xoCRDoQAvD_BwE. Last access on Nov 11 2020.
3. Polack FP, Thomas SJ, Kitchin N, Absalon J, Gurtman A, Lockhart S, et al. Safety and Efficacy of the BNT162b2 mRNA Covid-19 Vaccine. *N Engl J Med.* 2020;383(27):2603-15.
4. Walsh EE, Frenck RW, Jr., Falsey AR, Kitchin N, Absalon J, Gurtman A, et al. Safety and Immunogenicity of Two RNA-Based Covid-19 Vaccine Candidates. *N Engl J Med.* 2020;383(25):2439-50.
5. Baden LR, El Sahly HM, Essink B, Kotloff K, Frey S, Novak R, et al. Efficacy and Safety of the mRNA-1273 SARS-CoV-2 Vaccine. *N Engl J Med.* 2021;384(5):403-16.
6. Krammer F, Srivastava K, Alshammery H, Amoako AA, Awawda MH, Beach KF, et al. Antibody Responses in Seropositive Persons after a Single Dose of SARS-CoV-2 mRNA Vaccine. *N Engl J Med.* 2021.
7. Saadat S, Tehrani ZR, Logue J, Newman M, Frieman MB, Harris AD, et al. Binding and Neutralization Antibody Titers After a Single Vaccine Dose in Health Care Workers Previously Infected With SARS-CoV-2. *JAMA.* 2021.
8. Callegaro A, Borleri D, Farina C, Napolitano G, Valenti D, Rizzi M, et al. Antibody response to SARS-CoV-2 vaccination is extremely vivacious in subjects with previous SARS-CoV-2 infection. *J Med Virol.* 2021.
9. Stamatatos L, Czartoski J, Wan YH, Homad LJ, Rubin V, Glantz H, et al. mRNA vaccination boosts cross-variant neutralizing antibodies elicited by SARS-CoV-2 infection. *Science.* 2021.
10. Wang Z, Schmidt F, Weisblum Y, Muecksch F, Barnes CO, Finkin S, et al. mRNA vaccine-elicited antibodies to SARS-CoV-2 and circulating variants. *Nature.* 2021;592(7855):616-22.
11. Manisty C, Otter AD, Treibel TA, McKnight A, Altmann DM, Brooks T, et al. Antibody response to first BNT162b2 dose in previously SARS-CoV-2-infected individuals. *Lancet.* 2021;397(10279):1057-8.
12. Ebinger JE, Fert-Bober J, Printsev I, Wu M, Sun N, Prostko JC, et al. Antibody responses to the BNT162b2 mRNA vaccine in individuals previously infected with SARS-CoV-2. *Nat Med.* 2021.
13. Hacısuleyman E, Hale C, Saito Y, Blachere NE, Bergh M, Conlon EG, et al. Vaccine Breakthrough Infections with SARS-CoV-2 Variants. *N Engl J Med.* 2021.
14. Ju B, Zhang Q, Ge J, Wang R, Sun J, Ge X, et al. Human neutralizing antibodies elicited by SARS-CoV-2 infection. *Nature.* 2020;584(7819):115-9.
15. Lustig Y, Nemet I, Kliker L, Zuckerman N, Yishai R, Alroy-Preis S, et al. Neutralizing Response against Variants after SARS-CoV-2 Infection and One Dose of BNT162b2. *N Engl J Med.* 2021.
16. Anichini G, Terrosi C, Gandolfo C, Gori Savellini G, Fabrizi S, Miceli GB, et al. SARS-CoV-2 Antibody Response in Persons with Past Natural Infection. *N Engl J Med.* 2021.
17. Racine-Brzostek SE, Karbaschi M, Gaebler C, Klasse PJ, Yee J, Caskey M, et al. TOP-Plus is a Versatile Biosensor Platform for Monitoring SARS-CoV-2 Antibody Durability. *Clin Chem.* 2021.
18. Gaebler C, Wang Z, Lorenzi JCC, Muecksch F, Finkin S, Tokuyama M, et al. Evolution of antibody immunity to SARS-CoV-2. *Nature.* 2021.

19. Li K, Huang B, Wu M, Zhong A, Li L, Cai Y, et al. Dynamic changes in anti-SARS-CoV-2 antibodies during SARS-CoV-2 infection and recovery from COVID-19. *Nat Commun.* 2020;11(1):6044.
20. Widge AT, Roupheal NG, Jackson LA, Anderson EJ, Roberts PC, Makhene M, et al. Durability of Responses after SARS-CoV-2 mRNA-1273 Vaccination. *N Engl J Med.* 2021;384(1):80-2.
21. Gomez CE, Perdiguero B, and Esteban M. Emerging SARS-CoV-2 Variants and Impact in Global Vaccination Programs against SARS-CoV-2/COVID-19. *Vaccines (Basel).* 2021;9(3).
22. Mulligan MJ, Lyke KE, Kitchin N, Absalon J, Gurtman A, Lockhart S, et al. Phase I/II study of COVID-19 RNA vaccine BNT162b1 in adults. *Nature.* 2020;586(7830):589-93.
23. Yang HS, Racine-Brzostek SE, Karbaschi M, Yee J, Dillard A, Steel PAD, et al. Testing-on-a-probe biosensors reveal association of early SARS-CoV-2 total antibodies and surrogate neutralizing antibodies with mortality in COVID-19 patients. *Biosens Bioelectron.* 2021;178:113008.
24. WHO. *Coronavirus disease 2019 (COVID-19): situation report, 73.* Geneva: World Health Organization; 2020.
25. Lauer SA, Grantz KH, Bi Q, Jones FK, Zheng Q, Meredith HR, et al. The Incubation Period of Coronavirus Disease 2019 (COVID-19) From Publicly Reported Confirmed Cases: Estimation and Application. *Ann Intern Med.* 2020;172(9):577-82.
26. Wang Z, Muecksch F, Schaefer-Babajew D, Finkin S, Viant C, Gaebler C, et al. Naturally enhanced neutralizing breadth against SARS-CoV-2 one year after infection. *Nature.* 2021;595(7867):426-31.
27. Vabret N, Britton GJ, Gruber C, Hegde S, Kim J, Kuksin M, et al. Immunology of COVID-19: Current State of the Science. *Immunity.* 2020;52(6):910-41.
28. Food and Drug Administration. Antibody Testing Is Not Currently Recommended to Assess Immunity After COVID-19 Vaccination: FDA Safety Communication. <https://www.fda.gov/medical-devices/safety-communications/antibody-testing-not-currently-recommended-assess-immunity-after-covid-19-vaccination-fda-safety>. Accessed July 1 2021, 2021.
29. Krammer F. A correlate of protection for SARS-CoV-2 vaccines is urgently needed. *Nat Med.* 2021;27(7):1147-8.
30. Earle KA, Ambrosino DM, Fiore-Gartland A, Goldblatt D, Gilbert PB, Siber GR, et al. Evidence for antibody as a protective correlate for COVID-19 vaccines. *Vaccine.* 2021;39(32):4423-8.
31. Khoury DS, Cromer D, Reynaldi A, Schlub TE, Wheatley AK, Juno JA, et al. Neutralizing antibody levels are highly predictive of immune protection from symptomatic SARS-CoV-2 infection. *Nat Med.* 2021;27(7):1205-11.
32. Doria-Rose NA, and Joyce MG. Strategies to guide the antibody affinity maturation process. *Curr Opin Virol.* 2015;11:137-47.
33. Goldblatt D, Vaz AR, and Miller E. Antibody avidity as a surrogate marker of successful priming by Haemophilus influenzae type b conjugate vaccines following infant immunization. *J Infect Dis.* 1998;177(4):1112-5.
34. Dan JM, Mateus J, Kato Y, Hastie KM, Yu ED, Faliti CE, et al. Immunological memory to SARS-CoV-2 assessed for up to 8 months after infection. *Science.* 2021;371(6529).
35. Rodda LB, Netland J, Shehata L, Pruner KB, Morawski PA, Thouvenel CD, et al. Functional SARS-CoV-2-Specific Immune Memory Persists after Mild COVID-19. *Cell.* 2021;184(1):169-83 e17.
36. Wheatley AK, Juno JA, Wang JJ, Selva KJ, Reynaldi A, Tan HX, et al. Evolution of immune responses to SARS-CoV-2 in mild-moderate COVID-19. *Nat Commun.* 2021;12(1):1162.

37. Yang Y, Wang X, Du RH, Zhang W, Si HR, Zhu Y, et al. Serological investigation of asymptomatic cases of SARS-CoV-2 infection reveals weak and declining antibody responses. *Emerg Microbes Infect.* 2021;10(1):905-12.
38. Greenberger LM, Saltzman LA, Senefeld JW, Johnson PW, DeGennaro LJ, and Nichols GL. Antibody response to SARS-CoV-2 vaccines in patients with hematologic malignancies. *Cancer Cell.* 2021.
39. Ludwig H, San-Miguel J, Munshi N, Sonneveld P, Mateos MV, Moreau P, et al. Covid-19 vaccination in patients with multiple myeloma: Focus on immune response. *Am J Hematol.* 2021;96(8):896-900.
40. Narasimhan M, Mahimainathan L, Clark AE, Usmani A, Cao J, Araj E, et al. Serological Response in Lung Transplant Recipients after Two Doses of SARS-CoV-2 mRNA Vaccines. *Vaccines (Basel).* 2021;9(7).
41. Goyal P, Choi JJ, Pinheiro LC, Schenck EJ, Chen R, Jabri A, et al. Clinical Characteristics of Covid-19 in New York City. *N Engl J Med.* 2020;382(24):2372-4.
42. Yang HS, Costa V, Racine-Brzostek SE, Acker KP, Yee J, Chen Z, et al. Association of Age With SARS-CoV-2 Antibody Response. *JAMA Netw Open.* 2021;4(3):e214302.
43. Vashisht R, Patel A, Crews BO, Garner OB, Dahm L, Wilson C, et al. Age- and Sex-Associated Variations in the Sensitivity of Serological Tests Among Individuals Infected With SARS-CoV-2. *JAMA Netw Open.* 2021;4(2):e210337.
44. Lukacs NW, and Malinczak CA. Harnessing Cellular Immunity for Vaccination against Respiratory Viruses. *Vaccines (Basel).* 2020;8(4).
45. Braun J, Loyal L, Frentsch M, Wendisch D, Georg P, Kurth F, et al. SARS-CoV-2-reactive T cells in healthy donors and patients with COVID-19. *Nature.* 2020;587(7833):270-4.
46. Peng Y, Mentzer AJ, Liu G, Yao X, Yin Z, Dong D, et al. Broad and strong memory CD4(+) and CD8(+) T cells induced by SARS-CoV-2 in UK convalescent individuals following COVID-19. *Nat Immunol.* 2020;21(11):1336-45.
47. Ketas TJ, Chaturbhuj D, Portillo VMC, Francomano E, Golden E, Chandrasekhar S, et al. Antibody Responses to SARS-CoV-2 mRNA Vaccines Are Detectable in Saliva. *Pathog Immun.* 2021;6(1):116-34.
48. Muggeo VM. Estimating regression models with unknown break-points. *Stat Med.* 2003;22(19):3055-71.