

1 **Impact of different diagnostic measures on drug class association**
2 **with dementia progression risk: a longitudinal prospective cohort**
3 **study**

4 **Daman Kaur^{a*}, Magda Bucholc^b, David P. Finn^c, Stephen Todd^d, KongFatt**
5 **Wong-Lin^b, Paula L. McClean^a**

6 ^a Northern Ireland Centre for Stratified Medicine, Biomedical Sciences Research Institute,
7 Ulster University, Clinical Translational Research and Innovation Centre (C-TRIC), Altnagelvin
8 Hospital Site, Derry~Londonderry BT47 6SB, Northern Ireland, UK. Ph: +44 (0) 2871675675

9 ^b Intelligent Systems Research Centre, School of Computing, Engineering and Intelligent
10 Systems, Ulster University, Northland Rd, Derry~Londonderry BT48 7JL, Northern Ireland, UK.
11 Ph: +44 (0) 2871675320

12 ^c Pharmacology and Therapeutics, School of Medicine, Galway Neuroscience Centre, Human
13 Biology Building, National University of Ireland Galway, University Road, Galway H91 W5P7,
14 Republic of Ireland. Ph: +353-91-495586

15 ^d Altnagelvin Area Hospital, Western Health and Social Care Trust, Derry~Londonderry BT47
16 6SB, Northern Ireland, UK. Ph: +44 (0) 2871345171

17

18 *Corresponding author: Daman Kaur, kaur-d1@ulster.ac.uk, Northern Ireland Centre for
19 Stratified Medicine, Biomedical Sciences Research Institute, Ulster University, C-TRIC,
20 Altnagelvin Hospital Site, Derry~Londonderry BT47 6SB, Northern Ireland, UK.

21 **NOTE: This preprint reports new research that has not been certified by peer review and should not be used to guide clinical practice.**
Declarations of interest: none

22 **Abstract**

23 Background: Clinical Dementia Rating Sum of Boxes (CDRSOB) scale is known to be highly
24 indicative of cognitive-functional status, but it is unclear whether it is consistent with clinician
25 diagnosis in evaluating drug class associations with risk of progression to mild cognitive
26 impairment (MCI) and dementia.

27

28 Methods: We employed multivariate logistic regression on longitudinal NACC data, to identify
29 drug classes associated with disease progression risk, using clinician diagnosis and CDRSOB as
30 the outcome.

31

32 Results: Non-steroidal anti-inflammatory drugs, anxiolytics, antidiabetics, and Parkinson's
33 medications were significantly associated with decreased progression to mild cognitive
34 impairment (MCI)/dementia, and antihypertensives and Alzheimer's medications significantly
35 associated with increased progression risk. Associations were however dependant on the
36 diagnostic measure used, e.g., antihypertensives were associated with increased Healthy-to-
37 Dementia risk using clinical diagnosis as the outcome (OR:2.05, FDR $p < 0.001$), but not for
38 CDRSOB. Additionally, some associations appear to be gender specific; for instance,
39 antidiabetics had lower MCI-to-Dementia risk for women (OR:0.58, FDR $p = 0.006$) using
40 CDRSOB. Further, in accordance with existing literature, acetylcholinesterase inhibitors were
41 not beneficial in delaying dementia.

42

43 Conclusions: Overall, we demonstrate that choice of diagnostic measure can influence the
44 magnitude of risk or protection attributed to drug classes. A consensus must be reached
45 within the research community with respect to the most accurate diagnostic outcome to
46 identify risk and improve reproducibility.

47

48 Funding: This project was supported by the European Union's INTERREG VA Programme,
49 managed by the Special EU Programmes Body (SEUPB (Centre for Personalised Medicine, IVA
50 5036)), with additional support by the Northern Ireland Functional Brain Mapping Project
51 Facility (1303/101154803), funded by invest Northern Ireland and the University of Ulster
52 (K.W.-L.), Alzheimer's Research UK (ARUK) NI Pump Priming (M.B.,S.T.,K.W.-L.,P.L.M.), Ulster
53 University Research Challenge Fund (M.B.,S.T.,K.W.-L.,M.B.), and the Dr George Moore
54 Endowment for Data Science at Ulster University (M.B.).

55

56 **Introduction**

57 Dementia is a complex disease with several subtypes and aetiologies, and few effective
58 therapeutics (Arvanitakis et al., 2019). Therefore, extensive research has been carried out
59 analysing factors that may influence disease incidence and progression (Livingston et al.,
60 2020; Peters et al., 2019). Medications, in particular, may affect cognition in older adults
61 (Barton et al., 2008; Nikaido et al., 1990) due to increased drug sensitivity associated with
62 age-related factors such as impaired liver metabolism and decreased renal function (Barton
63 et al., 2008). Moreover, factors like potentially inappropriate prescribing, drug interactions

64 and polypharmacy, which are common in dementia patients, complicate the assessment of
65 specific drug classes on cognition (Delgado et al., 2019).

66 Several pharmacoepidemiology studies have analysed the relationship between
67 medications and dementia risk with conflicting findings. Researchers have acknowledged that
68 methodological differences substantially contribute to the variation in risk attributed to
69 different medications. Study design, inclusion criteria, data preparation, and especially the
70 diagnostic criteria used can influence outcomes (Erkinjuntti et al., 1997; Jansen et al., 2016;
71 Wancata et al., 2007). One study examining antidiabetic medications found protective effects
72 of metformin on dementia risk (Chin-Hsiao 2019), whereas another reported increased risk
73 of cognitive impairment associated with metformin use (Moore et al., 2013). For
74 antihypertensives, one systematic review reported a significant association between reduced
75 dementia risk and use of diuretics and angiotensin-converting enzyme (ACE) inhibitors (Shah
76 et al., 2009), whereas a study by Rouch et al. (2015) showed that calcium (Ca^{2+}) channel
77 blockers and renin–angiotensin system blockers, were associated with prevention of
78 dementia. Similarly, discrepant findings across studies have been reported on the association
79 between anxiolytics, such as benzodiazepines, and cognitive decline (Salzman, 2020; Verdoux
80 et al., 2005). This is also the case for other drug classes including antidepressants,
81 antipsychotics, and non-steroidal anti-inflammatory (NSAIDs) (Biringer et al., 2009; Hill et al.,
82 2010; Imbimbo et al., 2010; Zhang et al., 2018). We note significant variability in the diagnostic
83 criteria used across studies that undoubtedly impacts upon risk attribution leading to
84 conflicting findings.

85 Clinical assessment of dementia involves detailed examination of medical history,
86 cognitive tests followed by laboratory assays, psychiatric evaluation, and brain imaging to

87 identify dementia subtype. Studies have shown that subtle differences in classification
88 associated with National Institute of Neurological and Communicative Disorders and Stroke-
89 Alzheimer's Disease and Related Disorders Association (NINCDS-ADRDA), Diagnostic and
90 Statistical Manual Of Mental Disorders (DSM) criteria including DSM–III–R, DSM–IV, DSM-V,
91 International Classification of Diseases (ICD) criteria including ICD-9, ICD-10, ICD-11, and
92 Cambridge Mental Disorders of the Elderly Examination (CAMDEX) criteria can influence
93 clinical diagnosis, and lead to variation in dementia prevalence (Berman & Bursztajn 1999;
94 Chaves et al., 2007; Erkinjuntti et al., 1997; Wancata et al., 2007). As a result of this variation,
95 researchers often employ cognitive scores for analysis, especially in longitudinal studies as
96 they allow for identifying small changes in cognition over time. However, in clinical settings
97 cognitive tests are mainly used to aid the diagnostic decision-making process.

98 The Clinical Dementia Rating (CDR[®] Dementia Staging Instrument) scale, a cognitive
99 assessment tool, is regularly used in clinical and research settings to gauge dementia severity.
100 It provides a global score, and a more detailed CDR sum of boxes (CDRSOB) score obtained
101 through patient and informant interview based on the following cognitive and functional
102 domains; memory, orientation, judgment & problem solving, community affairs, home &
103 hobbies, and personal care (Morris, 1993). Studies have reported moderate (Forsell et al.,
104 1992; Juva et al., 1994), to good (Chaves et al., 2007; Ding et al., 2018; Lima et al., 2017)
105 correlation of the CDR scale with DSM and McKhann (1984) diagnostic criteria, with one study
106 reporting efficiency of CDRSOB in distinguishing MCI from dementia for patients with CDR
107 global score 0.5 (O'Bryant et al., 2010). However, it is unclear whether such cognitive-
108 functional assessments are consistent with clinical diagnosis in terms of evaluating the
109 benefits or risks of medications.

110 In this study, we investigate how the associations between medications and dementia
111 risk vary between clinical diagnosis and CDRSOB scores generally, and differentially in men
112 and women (Trenaman et al., 2009). We analysed several drug classes available in the
113 National Alzheimer's Coordinating Center (NACC) dataset, namely, antihypertensives, lipid
114 lowering medication, NSAIDs, anticoagulants, antidepressants, antipsychotics, anxiolytics,
115 antidiabetics, Alzheimer's disease (AD) medication and Parkinson's disease (PD) medication,
116 and subcategories of drugs within each class, for those significantly associated with
117 progression to MCI, all-cause dementia, and AD.

118

119 **Results**

120 Using multivariate logistic regression, we identified drug classes associated with risk of
121 progression from Healthy-to-MCI, Healthy-to-Dementia, Healthy-to-AD, MCI-to-Dementia,
122 and MCI-to-AD for both CDRSOB and clinical diagnosis as the outcome. The adjusted odds
123 ratios were calculated based on drug exposure vs. absence of the drug of interest during the
124 timeline available within the NACC dataset. The mean conversion time (standard deviation)
125 in years was 5.4 (3.1) for stable healthy, 6.7 (2.9) for Healthy-to-MCI, 3.1 (2.2) for stable MCI,
126 7 (2.6) for Healthy-to-Dementia, and 5.5 (2.3) for MCI-to-Dementia progression group. For
127 brevity, significant results are illustrated in Figures 1-4. Complete results, including
128 insignificant associations, can be found in Supplementary Table 1.

129

130

131

132 **NSAIDs reduce Healthy-to-MCI progression risk with clinical diagnosis as the outcome**

133 Progression analysis comparing stable healthy individuals to those who progressed
134 from Healthy-to-MCI, revealed antihypertensives and AD medications were significantly
135 associated with increased progression risk with both CDRSOB and clinical diagnosis as the
136 diagnostic measure (FDR $p < 0.001$). NSAIDs, on the other hand, significantly reduced
137 progression risk only with clinical diagnosis (FDR $p < 0.001$; Fig. 1A). For women specifically,
138 antihypertensives were significantly associated with increased progression risk for both
139 CDRSOB and clinical diagnosis (FDR $p < 0.001$), whereas AD medications were significantly
140 associated with progression risk only for clinical diagnosis as the outcome for women
141 specifically (FDR $p < 0.001$; Fig. 1A).

142

143 **Antihypertensives increase Healthy-to-Dementia risk overall, and in women with clinical**
144 **diagnosis as the outcome**

145 In terms of Healthy-to-Dementia progression, AD medications were significantly
146 associated with increased progression risk overall, and for both women and men separately,
147 for both CDRSOB and clinical diagnosis (FDR $p < 0.001$; Fig. 1B). Antihypertensives were
148 significantly associated with increased progression risk overall and specifically for women only
149 with clinical diagnosis as the outcome (FDR $p < 0.001$; Fig. 1B).

150

151

152

153 **Anxiolytics and antidiabetics reduce MCI-to-Dementia progression risk with CDRSOB as the**
154 **outcome**

155 Comparing stable MCI individuals to those who progressed from MCI-to-Dementia, AD
156 medications were significantly associated with increased progression risk overall, and in men
157 and women separately, with clinical diagnosis and CDRSOB (FDR $p < 0.001$; Fig. 1C). Anxiolytics
158 were significantly associated with reduced progression risk overall with CDRSOB score.
159 Similarly, diabetes medications were associated with reduced MCI-to-Dementia risk overall
160 (FDR $p < 0.001$) and specifically for women (FDR $p < 0.01$) with CDRSOB as the outcome (Fig. 1C).

161

162

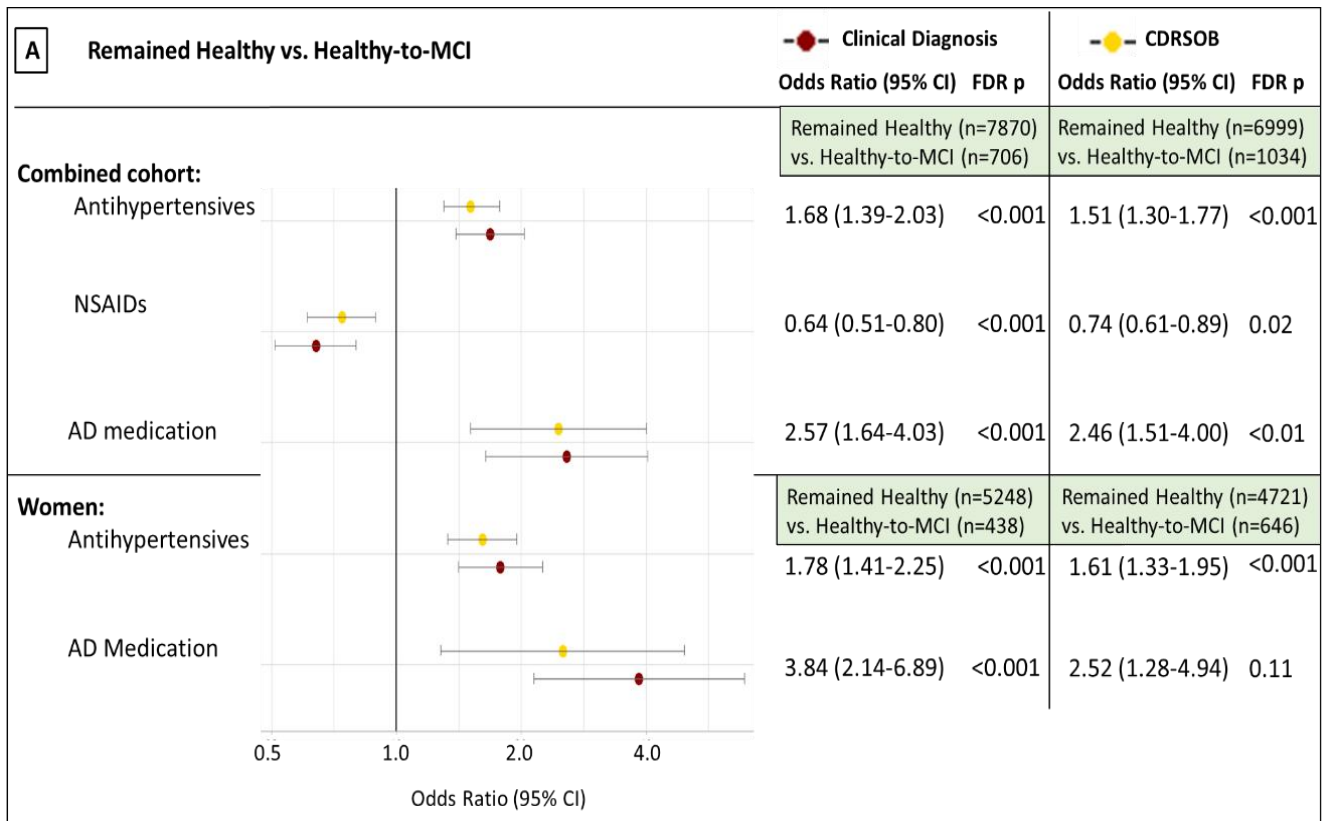
163

164

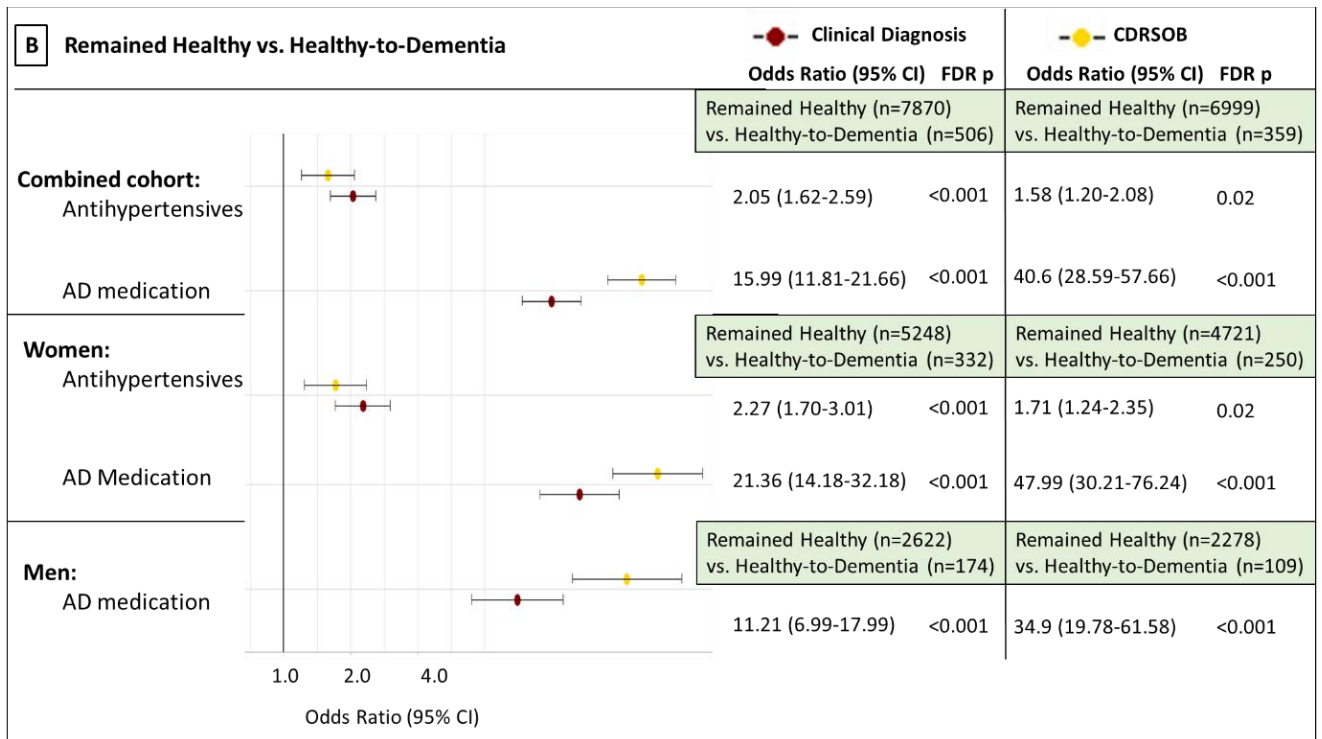
165

166

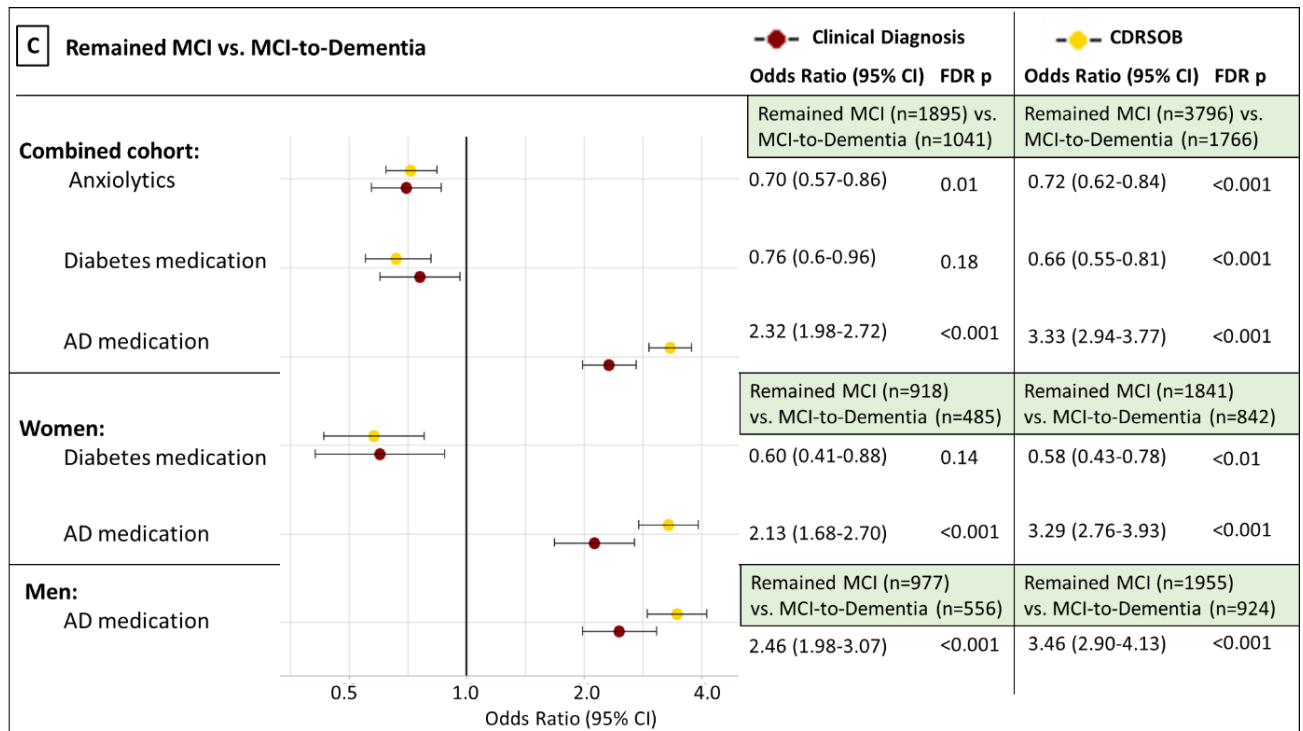
167



168



169



170

171 Fig. 1: Summary grouped forest plots of adjusted odds ratios for drug classes significantly associated
 172 with risk of progression to MCI and dementia for two diagnostic variables; clinical diagnosis and
 173 CDRSOB scores. Progression groups analysed: (A) Remained Healthy vs. Healthy-to-MCI; (B) Remained
 174 Healthy vs. Healthy-to-Dementia; (C) Remained MCI vs. MCI-to-Dementia. (AD: Alzheimer's Disease;
 175 NSAIDs: Non-steroidal anti-inflammatory drugs; CDRSOB: Clinical Dementia Rating sum of boxes).

176

177

178

179

180

181

182

183

184

185

186

187 **Antihypertensives increase Healthy-to-AD risk with clinical diagnosis as the outcome**

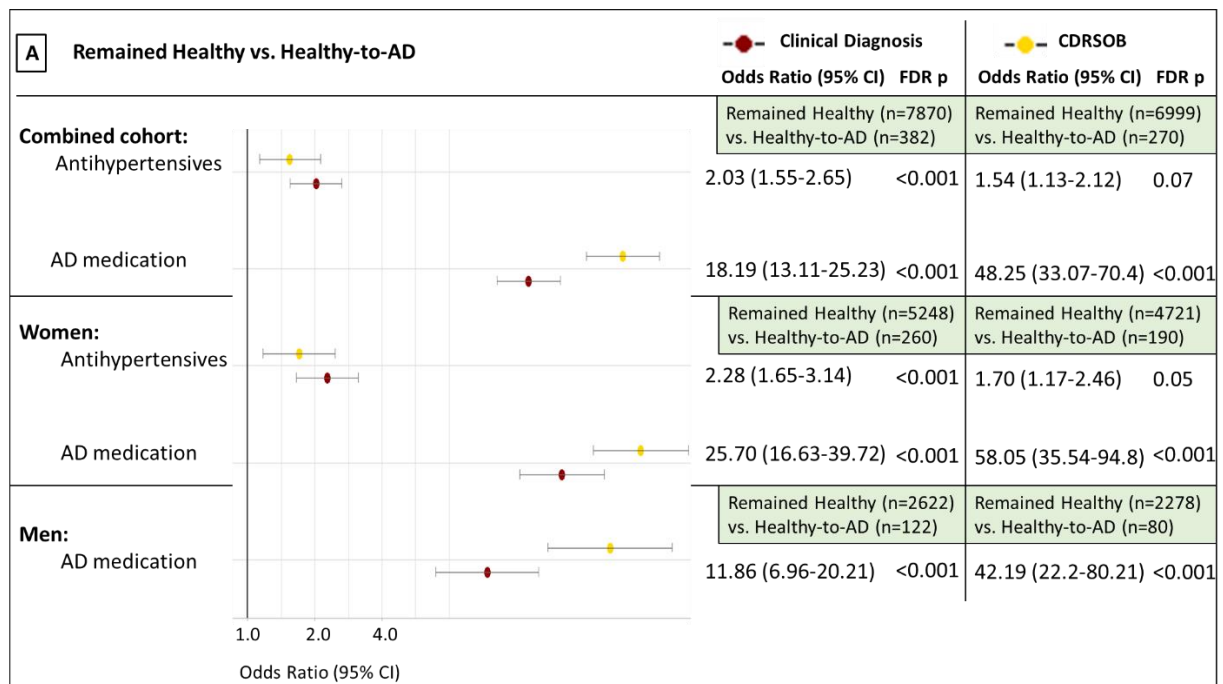
188 Next, we compared stable healthy individuals with those who progressed from
189 Healthy-to-AD (Fig. 2A). The results obtained were analogous to the analysis focusing on all-
190 cause dementia in terms of OR values and significance. Antihypertensives were significantly
191 associated with increased progression risk overall and specifically for women with clinical
192 diagnosis as the outcome (FDR $p < 0.001$; Fig. 2A). AD medications were significantly associated
193 with increased progression risk overall, and for both women and men separately, for both
194 CDRSOB and clinical diagnosis (FDR $p < 0.001$; Fig. 2A).

195

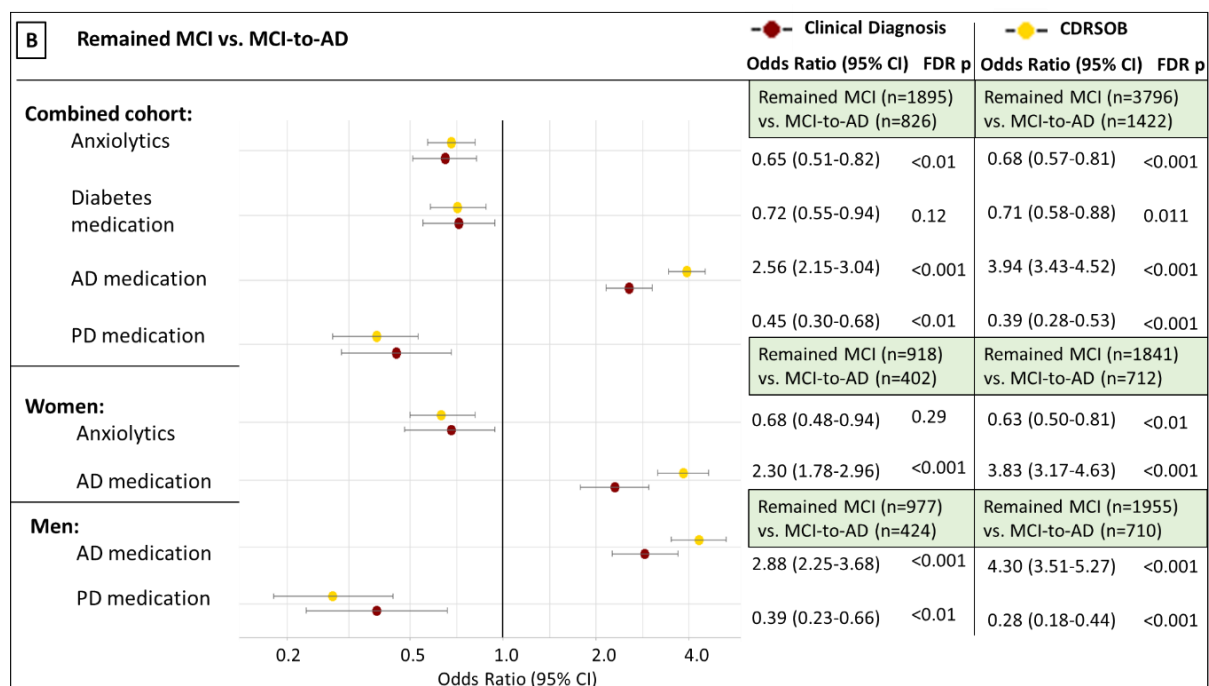
196 **Anxiolytics in women and Parkinson's medication in men are associated with reduced MCI-**
197 **to-AD progression risk**

198 Analysis comparing stable MCI individuals with those who progress from MCI-to-AD
199 revealed that anxiolytics significantly reduced progression risk with clinical diagnosis (FDR
200 $p < 0.01$) and CDRSOB (FDR $p < 0.001$) as the outcome (Fig. 2B). Whereas for women, anxiolytics
201 reduced progression risk only with CDRSOB as the outcome (FDR $p < 0.01$). AD medication was
202 associated with increased risk for both diagnostic variables overall, and for both women and
203 men, whereas Parkinson's medications significantly reduced progression risk overall, and
204 specifically for males with clinical diagnosis (FDR $p < 0.01$) and CDRSOB (FDR $p < 0.001$) as the
205 outcome (Fig. 2B).

206



207



208

209 Fig. 2: Summary grouped forest plots of adjusted odds ratios for drug classes significantly associated
 210 with risk of progression to AD for two diagnostic variables; clinical diagnosis and CDRSOB scores.
 211 Progression groups analysed: (A) Remained Healthy vs. Healthy-to-AD; (B) Remained MCI vs. MCI-to-
 212 AD. (AD: Alzheimer's Disease; PD: Parkinson's Disease; CDRSOB: Clinical Dementia Rating sum of
 213 boxes).

214

215 **Propionic acid derivatives reduce healthy to MCI and dementia progression risk**

216 We then focused on subcategories, or drug classes, of the significant drug families obtained
217 from primary analyses. In terms of NSAIDs, propionic acid derivatives were significantly
218 associated with reduced Healthy-to-MCI progression risk in general (FDR $p < 0.001$) and
219 specifically for women (FDR $p < 0.01$) with CDRSOB score (Fig. 3A). With clinical diagnosis as
220 the outcome, propionic acid derivatives were associated with significantly reduced Healthy-
221 to-Dementia progression risk overall (FDR $p < 0.001$) and specifically in females (FDR $p < 0.01$;
222 Fig. 3A). Propionic acid derivatives were also associated with significantly reduced Healthy-
223 to-AD progression risk (FDR $p < 0.01$; Fig. 3C) with clinical diagnosis, but not CDRSOB.

224 Moving on to antihypertensives, diuretics were significantly associated with increased
225 Healthy-to-MCI progression risk in women with CDRSOB as the outcome (FDR $p < 0.01$; Fig.
226 3A). With CDRSOB as the diagnostic outcome, antiadrenergic agents were associated with
227 significantly reduced MCI-to-Dementia risk in men (FDR $p < 0.001$; Fig. 3B), and more
228 specifically with reduced MCI-to-AD progression risk in men (FDR $p < 0.01$; Fig. 3C).

229

230 **Benzodiazepines and sulfonylureas are associated with reduced MCI-to-Dementia risk with**
231 **CDRSOB as outcome**

232 With respect to anxiolytics, benzodiazepines were associated with significantly
233 reduced MCI-to-Dementia progression risk with CDRSOB (FDR $p < 0.01$; Fig. 3B), but not
234 clinician diagnosis. Furthermore, benzodiazepines were associated with reduced MCI-to-AD
235 progression risk in general (FDR $p < 0.001$) and specifically for both men and women (FDR
236 $p < 0.01$) with CDRSOB (Fig. 3C).

237 With CDRSOB as the diagnostic measure, the sulfonylurea class of antidiabetic drugs
238 was significantly associated with reduced MCI-to-Dementia risk (FDR $p < 0.01$; Fig. 3B).
239 Furthermore, dopamine precursors, a class of Parkinson's disease medication, were
240 associated with significantly reduced MCI-to-AD progression risk (FDR $p < 0.001$; Fig. 3C) only
241 with CDRSOB as the diagnostic outcome.

242

243

244

245

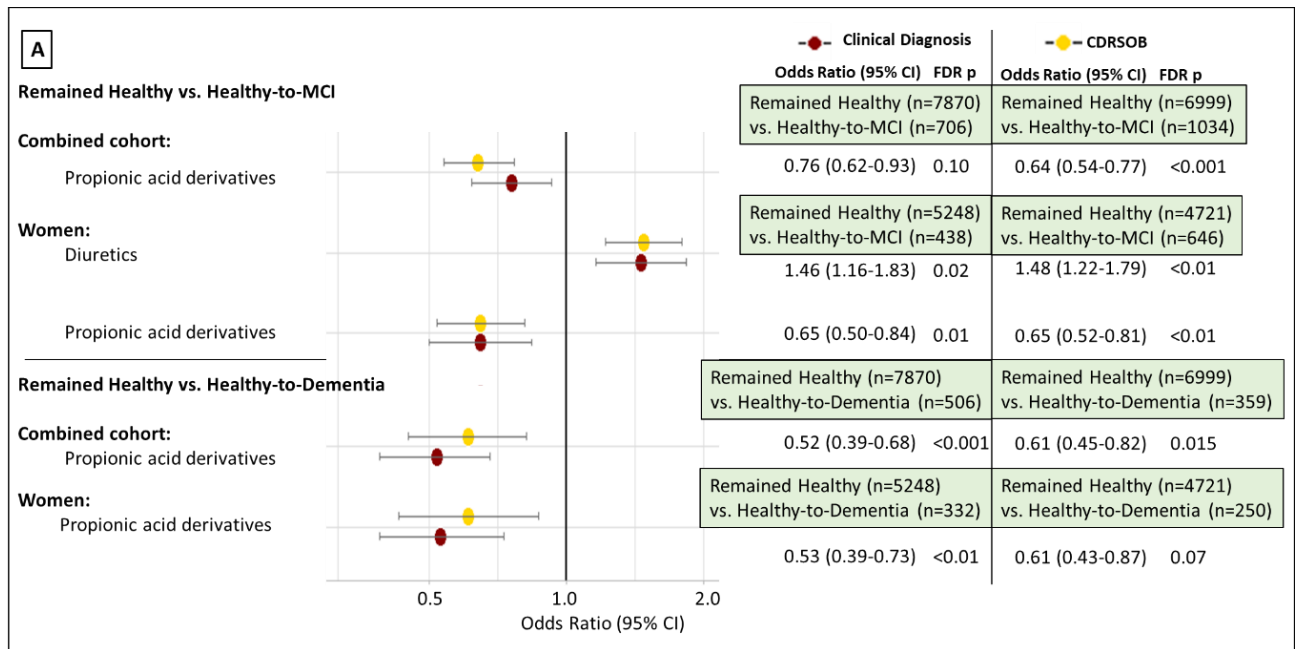
246

247

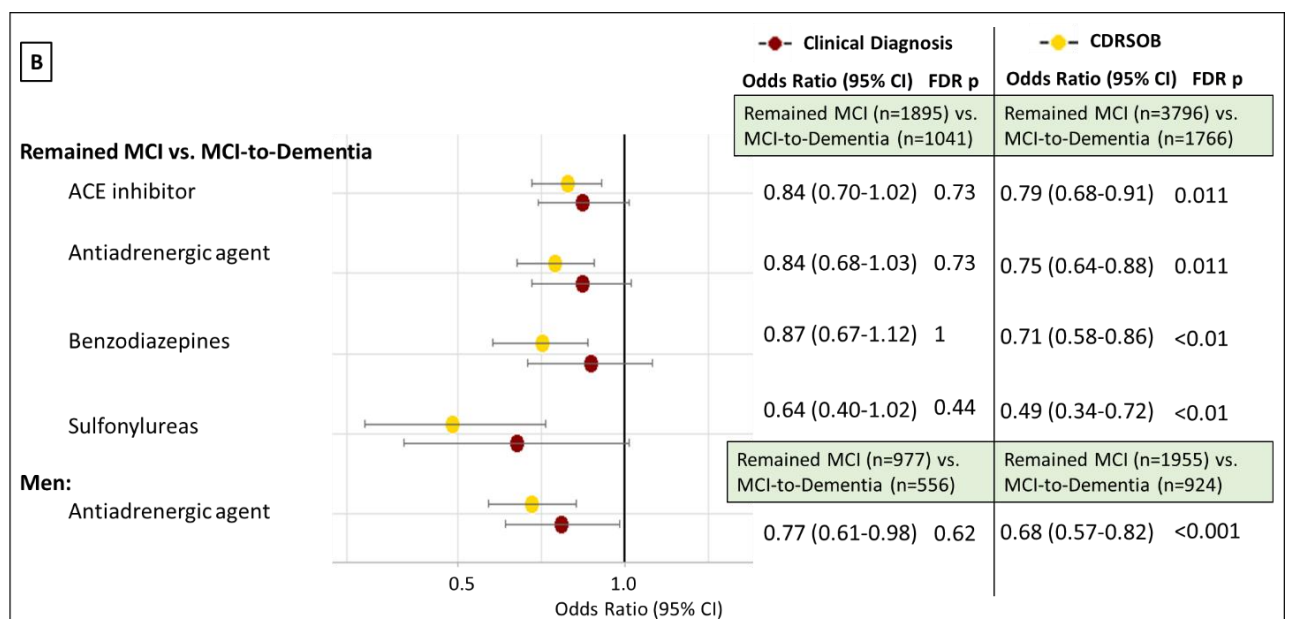
248

249

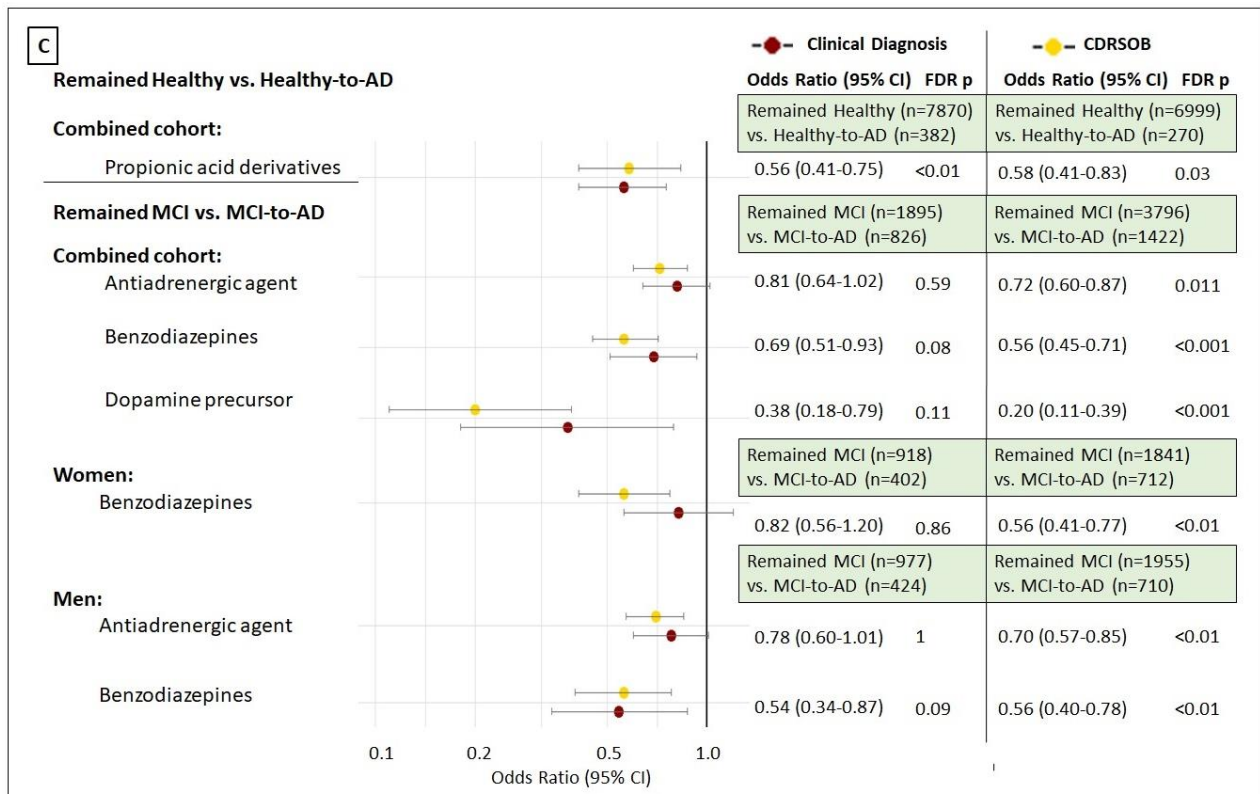
250



251



252



253

254 Fig. 3: Summary grouped forest plots of adjusted odds ratios of specific drug classes significantly
 255 associated with risk of progression to MCI, dementia, and AD for two diagnostic variables; clinical
 256 diagnosis and CDRSOB scores. Progression groups analysed: (A) Remained Healthy vs. Healthy-to-MCI,
 257 Remained Healthy vs. Healthy-to-Dementia; (B) Remained MCI vs. MCI-to-Dementia; (C) Remained
 258 Healthy vs. Healthy-to-AD and Remained MCI vs. MCI-to-AD.

259

260

261

262

263

264

265

266

267

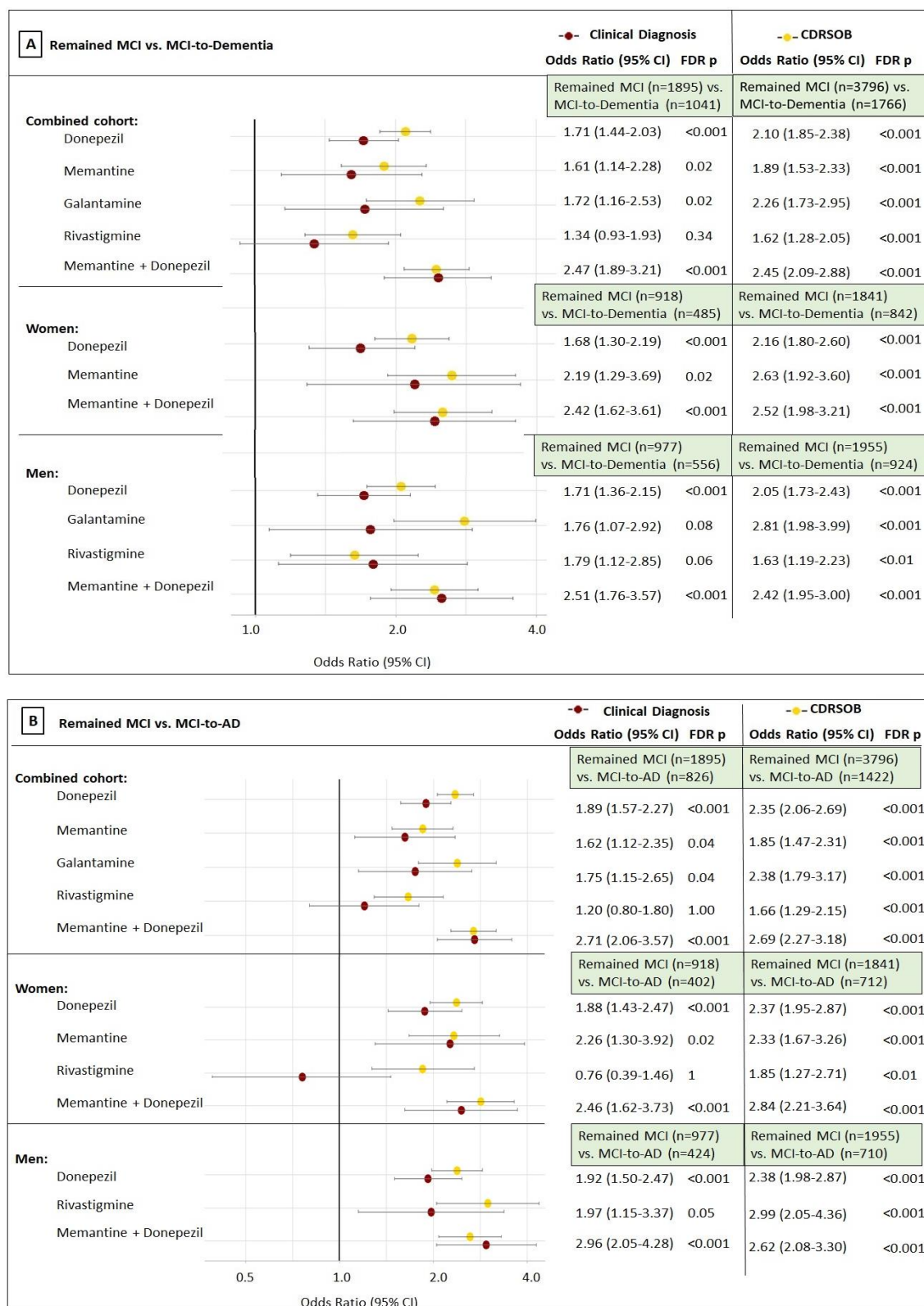
268

269 **AD drug treatments in individuals with MCI are associated with increased risk of dementia**
270 **and AD**

271 Commonly prescribed AD medications were analysed in participants who remained
272 MCI over time vs. those who progressed from MCI to AD specifically or dementia in general.
273 Donepezil, a cholinesterase inhibitor (ChEI) was significantly associated with increased MCI-
274 to-Dementia risk (FDR $p < 0.001$; Fig. 4A) and MCI-to-AD risk (FDR $p < 0.001$; Fig. 4B) in general,
275 and in men and women with both clinical diagnosis and CDRSOB as the outcome. Memantine,
276 an N-methyl-D-aspartate (NMDA) receptor antagonist was also significantly associated with
277 increased MCI-to-Dementia and MCI-to-AD risk overall and specifically for women with
278 CDRSOB (FDR $p < 0.001$; Fig. 4), but not clinical diagnosis.

279 Another ChEI, Galantamine, was associated with increased MCI-to-Dementia risk in
280 general (FDR $p < 0.001$) and specifically for men (FDR $p < 0.001$; Fig.4A), and increased MCI-to-
281 AD progression risk (FDR $p < 0.001$; Fig.4B) with CDRSOB as the diagnostic measure, but not
282 clinical diagnosis. Rivastigmine was significantly associated with increased MCI-to-Dementia
283 risk overall (FDR $p < 0.001$) and specifically for men (FDR $p < 0.01$; Fig.4A) with CDRSOB as the
284 diagnostic measure. In terms of MCI-to-AD progression, rivastigmine was significantly
285 associated with increased risk of progression overall (FDR $p < 0.001$), and in both women and
286 men (FDR $p < 0.01$ & FDR $p < 0.001$ respectively) with CDRSOB as the outcome, but not clinical
287 diagnosis (Fig.4B).

288 Combined prescription of memantine and donepezil was significantly associated with
289 increased MCI-to-Dementia (FDR $p < 0.001$; Fig. 4A) and MCI-to-AD risk (FDR $p < 0.001$; Fig. 4B)
290 in general, and specifically in women and men with both CDRSOB and clinical diagnosis.



291

292 Fig. 4: Summary grouped forest plots of adjusted odds ratios for AD drugs significantly associated with
 293 risk of progression to dementia and AD for two diagnostic variables; clinical diagnosis and CDRSOB
 294 scores. Progression groups analysed: (A) Remained MCI vs. MCI-to-Dementia; (B) Remained MCI vs.
 295 MCI-to-AD. (CDRSOB: Clinical Dementia Rating sum of boxes).

296

297 **Discussion**

298 In this study, we demonstrate that the use of different diagnostic measures for MCI and
299 dementia, i.e., clinical diagnosis and CDRSOB scores, affect the magnitude of the association
300 of various medications with disease risk and progression. From the drug classes analysed,
301 antihypertensives, NSAIDs, anxiolytics, antidiabetics, AD and PD medications were found to
302 be differentially associated with risk of progression to MCI, all-cause dementia, and AD with
303 respect to the diagnostic measure used. Additionally, subcategories of these drug classes;
304 antiadrenergics, ACE inhibitors, propionic acid derivatives, benzodiazepines, sulfonylureas,
305 and dopamine precursors were associated with decreased risk of progression, and diuretics
306 were associated with increased progression risk.

307 In the NACC dataset, consensus-based clinical diagnosis was made using the criteria
308 proposed by Mckhann et al. (Mckhann et al., 1984; Mckhann et al., 2011). A previous study,
309 analysing the NACC dataset, reported diagnostic accuracy with 0.71 sensitivity and 0.81
310 specificity when comparing CDRSOB scores to dementia diagnosis (O’Bryant et al., 2010). We
311 report that despite good correlation between the two diagnostic measures, our analysis
312 produced discordant results while analysing risk associated with different medications. With
313 the exception of AD and PD medications, whilst odds ratios were consistently in the same
314 direction, the statistical significance of results was inconsistent for the two diagnostic
315 measures.

316 The CDRSOB scale offers a wider score range allowing better demarcation of subtle
317 changes between different stages of disease progression. In the NACC cohort (Fig. 1-3), a
318 lower number of individuals are classified into Healthy-to-MCI group by clinical diagnosis

319 (n=438), compared to CDRSOB score (n=646). This suggests that CDRSOB scale can detect
320 early disease symptoms and help diagnose MCI. Whereas in terms of a clinical diagnosis, there
321 are no specific tests that confirm MCI, judgement is made based on clinical evaluation and
322 exclusion of other causative factors such as hypothyroidism or vitamin B12 deficiency. These
323 factors not only affect the prevalence of MCI and dementia in a cohort but may also lead to
324 variation in risk analysis.

325 In our study, PD medications were associated with reduced MCI-to-AD risk overall, and
326 specifically for men with both diagnostic measures, given that PD is more common in males.
327 Dopamine precursors, in particular, were associated with significantly reduced MCI-to-AD risk
328 with CDRSOB as the outcome. Studies have shown that levodopa treatment can have
329 beneficial effect on cognition (Ikeda et al., 2017). Additionally, PD related MCI is clinically
330 distinct and has a longer conversion period to dementia, compared to AD related MCI (Besser
331 et al., 2016).

332 While focusing on specific AD drugs for MCI-to-Dementia and MCI-to-AD progression,
333 donepezil, and a combination of donepezil and memantine, were significantly associated with
334 increased risk of disease progression with both clinical diagnosis and CDRSOB as the outcome.
335 However, memantine, galantamine, and rivastigmine were found to be significantly
336 associated only with CDRSOB as the outcome. Previous studies have shown faster cognitive
337 decline with ChEI therapy in MCI and early AD (Han et al., 2019; Schneider et al., 2011). These
338 associations could be due to confounding by indication since patients with cognitive
339 impairment are more likely to be prescribed these drugs. It also reflects the prescribing
340 patterns across clinics since, in contradiction to the US FDA guidelines, physicians are known
341 to prescribe ChEIs and memantine during early stages of impairment (Schneider et al., 2011).

342 Additionally, we found significant MCI-to-Dementia risk associated with memantine in
343 women, and galantamine and rivastigmine in men.

344 Antihypertensives were significantly associated with increased Healthy-to-MCI risk
345 overall, and specifically for women, for both clinical diagnosis and CDRSOB diagnostic
346 measures. However, for Healthy-to-Dementia/AD progression, antihypertensives were
347 associated with significantly increased progression risk only with clinical diagnosis as the
348 outcome. Several studies have reported increased risk of cognitive impairment associated
349 with hypertension, and a subsequent reduced risk with antihypertensive treatment.
350 However, there still exists ambiguity regarding the duration, specific drug subclass and
351 optimal dosage to prevent cognitive impairment (Ou et al., 2020). A previous study analysing
352 the NACC dataset reported an increased AD risk with intensive treatment for systolic BP,
353 especially in those with comorbid depression (Yeung et al., 2019); another found lower
354 cognitive scores associated with lower systolic BP (Fiford et al., 2020). Furthermore, with
355 CDRSOB as the outcome, diuretics were associated with increased Healthy-to-MCI risk for
356 women specifically, and antiadrenergics reduced MCI-to-Dementia/AD risk for men. Although
357 studies have shown reduced risk of AD/dementia with diuretic therapy (DeLoach & Beall,
358 2018; Yasar et al., 2013), our analysis reports an increased risk of cognitive impairment in
359 women.

360 With respect to NSAIDs, conflicting outcomes have been reported in observational and
361 experimental studies (Ali et al., 2019; Breitner et al., 2009; Cote et al., 2012). Our analysis
362 showed reduced Healthy-to-MCI risk with clinical diagnosis. However, in terms of
363 subcategories, propionic acid derivatives were associated with reduced Healthy-to-MCI risk
364 with CDRSOB, and reduced Healthy-to-Dementia/AD risk with clinical diagnosis. Commonly

365 used propionic acid derivatives, such as ibuprofen and naproxen, have been associated with
366 delayed or decreased rate of cognitive decline (Grodstein et al., 2008; Leoutsakos et al., 2011).
367 NSAID use may also lead to modulation of inflammatory pathways which can be beneficial as
368 inflammatory genes and molecules have been linked with AD development (Newcombe et al.,
369 2018; Raj et al., 2017). Additionally, studies have shown that some NSAIDs can mediate A β
370 clearance. However, it is only effective during the early disease stages (Imbimbo et al., 2010).

371 In the case of anxiolytics, results were consistent for both clinical diagnosis and
372 CDRSOB with a reduced MCI-to-Dementia and MCI-to-AD progression risk. However, while
373 analysing subcategories, we found benzodiazepines to be associated with reduced MCI-to-
374 Dementia and MCI-to-AD progression risk only with CDRSOB as the outcome. Anxiety and
375 related disorders are speculated to be symptoms and risk factors of dementia (Gimson et al.,
376 2017). Several studies have reported an increased dementia risk with anxiolytics. However, a
377 previous study, analysing NACC data, demonstrated neutralised disease progression risk in
378 MCI and AD patients suffering from anxiety, and apolipoprotein E4 carriers who were
379 prescribed certain anxiolytics (Burke et al., 2017).

380 We found antidiabetics were significantly associated with reduced MCI-to-Dementia
381 risk, and specifically for women with CDRSOB as the outcome. Despite the association of
382 diabetes with lower cognitive function, several studies have reported a reduced dementia risk
383 in those taking oral hypoglycaemic medication (Hsu et al., 2011; Kim et al., 2019; Wu et al.,
384 2020). Further analysis of drug subcategories in the present study revealed reduced MCI-to-
385 Dementia risk with CDRSOB associated with sulfonylureas. Again, there are inconsistent
386 results in the literature regarding sulfonylureas and associated dementia risk. Some have
387 reported an increased risk which might be linked to intensive treatment leading to

388 hypoglycaemia (Zammitt & Frier, 2005). Using CDRSOB as the outcome, studies have shown
389 that glycaemic trajectories, can predict cognitive performance (Springer et al., 2014).

390 Overall, our study shows that the magnitude and significance of association of
391 different medications with disease progression can vary depending on the diagnostic measure
392 used. CDRSOB scores, though comparatively less comprehensive, form a part of clinical
393 diagnosis which leads to high correlation between the two. Due to unavailability of clinical
394 diagnosis in some datasets, or a preference for quantitative analysis to increase precision and
395 reduce subjectivity, researchers often opt for cognitive scores. However, we must be aware
396 of the implications of choosing a particular diagnostic measure, and careful regarding how we
397 interpret the results.

398 There were limitations in this study, such as the low number of individuals while
399 analysing subcategories of drug classes. Importantly, it should be noted that significant results
400 obtained in this study are associations and not causation, as the data was not generated from
401 randomised controlled trials. Therefore, our findings are vulnerable to unmeasured
402 confounders or confounding by indication, with AD drugs for example. Surprisingly, it was
403 observed that some cognitively healthy individuals (clinical diagnosis, n=108; CDRSOB, n=63)
404 were taking AD medication, either a reflection of genuine prescribing patterns for AD drugs
405 or errors at the point of data entry. Moreover, in this study exposure to the drug classes was
406 analysed irrespective of duration, dosage, and drug-drug interactions. There is a need for
407 more detailed analyses on larger cohorts, including real-world clinical databases, for further
408 evaluation to identify the most relevant diagnostic measure and to inform prescribing
409 patterns in order to reduce modifiable risk of dementia. Additionally, based on our results we
410 believe that further studies should focus on a gender stratified approach as there may be

411 differential risk profiles associated with various subcategories of drug classes in men and
412 women.

413

414 **Materials and Methods**

415 **Data source**

416 Archival data from the National Alzheimer's Coordinating Center (NACC), consisting of over
417 500 variables on genetic, lifestyle and clinical features for 34,848 individuals was used in this
418 study. Details about the NACC, recruitment of participants, and assessment process has been
419 previously described (Besser et al., 2018; Morris et al., 2006).

420 The NACC Uniform Data Set (UDS), comprising of data collected from September 2005
421 until June 2018 was used in our analysis. Written, informed consent from all participants and
422 co-participants included in NACC-UDS was obtained by the Alzheimer's disease research
423 centers (ADRCs) where they completed their study visits. The following drug classes were
424 analysed: antihypertensives, lipid lowering medication, NSAIDs, anticoagulants/antiplatelets,
425 antidepressants, antipsychotic agents, anxiolytics/sedatives/hypnotics, diabetes medication,
426 AD medication, and Parkinson's disease medication. The diagnostic category of participants
427 was determined based on both clinical diagnosis and CDRSOB scores. In NACC-UDS Version 1
428 and 2, the process of clinical diagnosis for all-cause dementia relied on the diagnostic protocol
429 of the ADRC, with centres generally using DSM-IV (1994) or NINCDS-ADRDA guidelines. In
430 NACC-UDS Version 3, the criteria for all-cause dementia was modified from McKhann (2011).
431 Diagnoses of MCI were established using the modified Petersen criteria. Individuals included
432 in the analyses were aged ≥ 40 years.

433

	Diagnostic criteria for UDS version 1.0 – 2.0	Diagnostic criteria for UDS version 3.0
Mild cognitive impairment (MCI)	Petersen & Morris, 2005	Petersen & Morris, 2005
Alzheimer’s disease (AD)	NINCDS-ADRDA criteria (McKhann et al., 1984)	NIA-AA criteria (McKhann et al., 2011)
All-cause dementia	Not specified (McKhann et al., 1984 or DSM-IV)	McKhann et al., 2011

434

435 **Data preparation**

436 A multi-time-point data preparation approach was employed to conduct progression analysis.
437 Clinical diagnosis and CDRSOB scores were identified across all visits for each participant to
438 determine changes in cognitive status over time. Subsequently, five comparisons were
439 assessed for both diagnostic measures (Table 1) for the following six progression groups;
440 participants that were healthy across all visits (Remained Healthy), participants that were MCI
441 across all visits (Remained MCI), those who progressed from Healthy-to-MCI, from Healthy-
442 to-AD, from MCI-to-Dementia, and from MCI-to-AD. CDRSOB scores were categorized as
443 healthy: 0, MCI: 0.5-4.0 and dementia: 4.5-18 (O’Bryant et al., 2010). Details about the data
444 cleaning procedure have been published previously (Kaur et al., 2020).

445

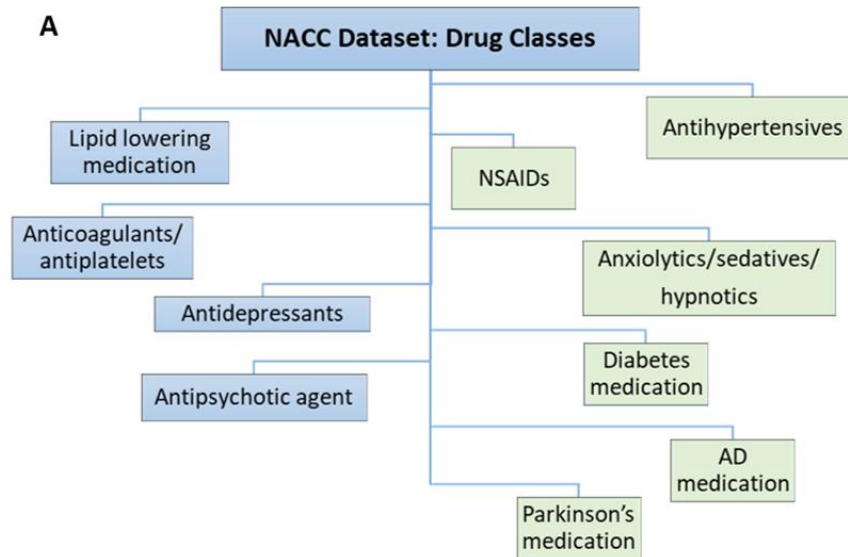
446

447 Table 1: Progression groups analysed using multivariate logistic regression.

Clinical Diagnosis	CDRSOB score	
Remained Healthy (7870) vs. Healthy-to-MCI (706)	Remained Healthy (6999) vs. Healthy-to-MCI (1034)	448 449
Remained Healthy (7870) vs. Healthy-to-Dementia (506)	Remained Healthy (6999) vs. Healthy-to-Dementia (359)	450 451
Remained MCI (1895) vs. MCI-to-Dementia (1041)	Remained MCI (3796) vs. MCI-to-Dementia (1766)	452
Remained Healthy (7870) vs. Healthy-to-AD (382)	Remained Healthy (6999) vs. Healthy-to-AD (270)	453
Remained MCI (1895) vs. MCI-to-AD (826)	Remained MCI (3796) vs. MCI-to-AD (1422)	454

455

456



457

B

Antihypertensives	NSAIDs	Anxiolytics	Diabetes medication	AD medication	Parkinson's medication
Antihypertensive combination therapy	Selective COX-2 inhibitors	Barbiturates	Sulfonylureas	Memantine+ Donepezil combination	Dopamine precursor
ACE inhibitors Antiadrenergic agents	Propionic acid derivatives	Benzodiazepines	Thiazolidinediones combination drugs	Donepezil	Dopamine receptor agonist
Beta blocker Calcium channel blocker	Enolic acid derivatives	Sedatives/ Hypnotics	Alpha-glucosidase inhibitors	Memantine	COMT inhibitors
Angiotensin II inhibitor	Acetic acid derivatives	Antihistamines	SGLT-2 inhibitors	Galantamine	MAO-B inhibitors
Diuretic	Salicylates	Azapirones	Insulin	Rivastigmine	Anticholinergics
Vasodilator			DPP-4 inhibitors	Tacrine	
			Biguanides		
			Incretin mimetics		
			Meglitinides		

458

459 Fig. 5: (A) Drug classes available in the NACC UDS analysed in the present study. Statistically significant
 460 classes (shaded green; FDR $p < 0.01$) obtained from multivariate logistic regression. (B) Based on their
 461 mechanism of action, subcategories of significant drug classes were further analysed. (NACC: National
 462 Alzheimer's Coordinating Center; NSAIDs: Nonsteroidal anti-inflammatory drugs; AD: Alzheimer's
 463 Disease; ACE: Angiotensin-converting enzyme; COX-2: Cyclooxygenase-2; SGLT-2: Sodium-glucose co-
 464 transporter-2; DPP-4: Dipeptidyl peptidase-4; COMT: Catechol-O-methyltransferase; MAO-B:
 465 Monoamine oxidase type B).

466

467 The major drug classes analysed in this study, and subcategories of antihypertensives are
468 available in the UDS dataset as variables. For subcategorising the other significant drug classes
469 (Fig. 5), we used the researcher's data dictionary (RDD) to identify the common drug names
470 stored in the UDS. Next, we searched for specific drug terms (Supplementary Table 2) across
471 all visits to determine prescription data for each individual, those who reported a specific drug
472 at least during one visit were classified as taking the medication. These were then categorised
473 based on their mechanism of action (Fig. 5B). Medications with ophthalmic and topical routes
474 of administration were excluded from this analysis.

475

476 **Statistical analysis**

477 In order to explore the associations between different drug classes and disease progression,
478 multivariate logistic regression was employed which controls for confounders (Glonck et al.,
479 1995). Drug classes illustrated in Fig. 5A, were first analysed together, followed by analysing
480 subcategories of respective significant drug classes (as depicted column wise in Fig. 5B).
481 Additionally, the analysis was repeated for men and women separately, to determine sex-
482 specific effects associated with drug exposure. Adjustment for multiple hypothesis testing
483 was achieved by applying false discovery rate (FDR) using the Benjamini-Yekutieli correction
484 method (Benjamini & Yekutieli, 2001). FDR adjusted p-values (FDR p) <0.01 were considered
485 statistically significant.

486

487

488 **Software and codes**

489 Statistical analyses were performed using the 'PredictABEL' package in R studio (Version
490 1.1.423) on a Windows machine with eight memory cores. Codes will be uploaded to GitHub.

491

492

493

494

495

496

497

498

499

500

501

502

503

504

505

506

507 **Acknowledgements**

508 1. This project was supported by the European Union's INTERREG VA Programme, managed
509 by the Special EU Programmes Body (SEUPB (Centre for Personalised Medicine, IVA 5036)),
510 with additional support by the Northern Ireland Functional Brain Mapping Project Facility
511 (1303/101154803), funded by invest Northern Ireland and the University of Ulster (K.W.-L.),
512 Alzheimer's Research UK (ARUK) NI Pump Priming (M.B.,S.T.,K.W.-L.,P.L.M.), Ulster University
513 Research Challenge Fund (M.B.,S.T.,K.W.-L.,M.B.), and the Dr George Moore Endowment for
514 Data Science at Ulster University (M.B.). The views and opinions expressed in this paper do
515 not necessarily reflect those of the European Commission or the SEUPB.

516 2. The NACC database is funded by NIA/NIH Grant U01 AG016976. NACC data are contributed
517 by the NIA-funded ADCs: P30 AG019610 (PI Eric Reiman, MD), P30 AG013846 (PI Neil Kowall,
518 MD), P50 AG008702 (PI Scott Small, MD), P50 AG025688 (PI Allan Levey, MD, PhD), P50
519 AG047266 (PI Todd Golde, MD, PhD), P30 AG010133 (PI Andrew Saykin, PsyD), P50 AG005146
520 (PI Marilyn Albert, PhD), P50 AG005134 (PI Bradley Hyman, MD, PhD), P50 AG016574 (PI
521 Ronald Petersen, MD, PhD), P50 AG005138 (PI Mary Sano, PhD), P30 AG008051 (PI Thomas
522 Wisniewski, MD), P30 AG013854 (PI M. Marsel Mesulam, MD), P30 AG008017 (PI Jeffrey
523 Kaye, MD), P30 AG010161 (PI David Bennett, MD), P50 AG047366 (PI Victor Henderson, MD,
524 MS), P30 AG010129 (PI Charles DeCarli, MD), P50 AG016573 (PI Frank LaFerla, PhD), P50
525 AG005131 (PI James Brewer, MD, PhD), P50 AG023501 (PI Bruce Miller, MD), P30 AG035982
526 (PI Russell Swerdlow, MD), P30 AG028383 (PI Linda Van Eldik, PhD), P30AG053760 (PI Henry
527 Paulson, MD, PhD), P30 AG010124 (PI John Trojanowski, MD, PhD), P50 AG005133 (PI Oscar
528 Lopez, MD), P50 AG005142 (PI Helena Chui, MD), P30 AG012300 (PI Roger Rosenberg, MD),
529 P30 AG049638 (PI Suzanne Craft, PhD), P50 AG005136 (PI Thomas Grabowski, MD), P50

530 AG033514 (PI Sanjay Asthana, MD, FRCP), P50 AG005681 (PI John Morris, MD), P50 AG047270

531 (PI Stephen Strittmatter, MD, PhD).”

532

533

534

535

536

537

538

539

540

541

542

543

544

545

546

547

548

549 **References**

- 550 Ali, M.M., Ghouri, R.G., Ans, A.H., Akbar, A. & Toheed, A. 2019, "Recommendations for Anti-
551 inflammatory Treatments in Alzheimer's Disease: A Comprehensive Review of the Literature",
552 Cureus, vol. 11, no. 5, pp. e4620.
- 553 American Psychiatric Association.1994, "Diagnostic and statistical manual of mental
554 disorders: DSM-IV" Washington, pp.866.
- 555 Arvanitakis, Z., Shah, R.C., Bennett, D.A. 2019, "Diagnosis and Management of Dementia:
556 Review", JAMA, vol. 322, no. 16, pp. 1589-1599.
- 557 Barton C., Sklenicka J., Sayegh P. & Yaffe, K. 2008, "Contraindicated medication use among
558 patients in a memory disorders clinic.", American Journal Geriatric Pharmacotherapy, vol. 6,
559 no. 3, pp. 147-152.
- 560 Benjamini, Y. & Yekutieli, D. 2001, "The Control of the False Discovery Rate in Multiple Testing
561 under Dependency", The Annals of Statistics, vol. 29, no. 4, pp. 1165-1188.
- 562 Berman, S., Bursztajn, H.J. 1999, "Clinical criteria for three types of dementia had low
563 sensitivity and high specificity." Evidence-Based Mental Health, vol. 2, pp. 91.
- 564 Besser, L., Kukull, W., Knopman, D.S., Chui, H., Galasko, D., Weintraub, S., Jicha, G., Carlsson,
565 C., Burns, J., Quinn, J., Sweet, R.A., Rascovsky, K., Teylan, M., Beekly, D., Thomas, G.,
566 Bollenbeck, M., Monsell, S., Mock, C., Zhou, X.H., Thomas, N., Robichaud, E., Dean, M.,
567 Hubbard, J., Jacka, M., Schwabe-Fry, K., Wu, J., Phelps, C., Morris, J.C. & Neuropsychology
568 Work Group, Directors, and Clinical Core leaders of the National Institute on Aging-funded US
569 Alzheimer's Disease Centers 2018, "Version 3 of the National Alzheimer's Coordinating

- 570 Center's Uniform Data Set", *Alzheimer Disease & Associated Disorders*, vol. 32, no. 4, pp. 351-
571 358.
- 572 Besser L.M., Litvan I., Monsell S.E., Mock C., Weintraub S., Zhou X.H. & Kukull, W. 2016, "Mild
573 cognitive impairment in Parkinson's disease versus Alzheimer's disease.", *Parkinsonism and*
574 *Related Disorders*, vol. 27, pp. 54-60.
- 575 Biringer, E., Rongve, A. & Lund, A. 2009, "A Review of Modern Antidepressants' Effects on
576 Neurocognitive Function", *Current Psychiatry Reviews*, vol. 5, no. 3, pp. 164-174.
- 577 Burke, S.L., O'Driscoll, J., Alcide, A. & Li, T. "Moderating risk of Alzheimer's disease through
578 the use of anxiolytic agents", *International journal of geriatric psychiatry*, vol. 32, no. 12 pp.
579 1312-1321.
- 580 Breitner, J.C.S., Haneuse, S.J.P.A., Walker, R., Dublin, S., Crane, P.K., Gray, S.L. & Larson, E.B.
581 2009, "Risk of dementia and AD with prior exposure to NSAIDs in an elderly community-based
582 cohort SYMBOL SYMBOL", *Neurology*, vol. 72, no. 22, pp. 1899-1905.
- 583 Chin-Hsiao, T. 2019, "Metformin and the Risk of Dementia in Type 2 Diabetes Patients.", *Aging*
584 *& Disease*, vol. 10, no. 1, pp. 37-48.
- 585 Chaves, M.L.F., Camozzato, A.L., Godinho, C., Kochhann, R., Schuh, A., de Almeida, V.L. &
586 Kaye, J. 2007, "Validity of the clinical dementia rating scale for the detection and staging of
587 dementia in Brazilian patients.", *Alzheimer Disease & Associated Disorders*, vol. 21, no. 3, pp.
588 210-217.
- 589 Cote S., Carmichael P.H., Verreault R., Lindsay J., Lefebvre J. & Laurin, D. 2012, "Nonsteroidal
590 anti-inflammatory drug use and the risk of cognitive impairment and Alzheimer's disease.",
591 *Alzheimer's and Dementia*, vol. 8, no. 3, pp. 219-226.

- 592 Delgado, J., Bowman, K. & Clare, L. 2020, "Potentially inappropriate prescribing in dementia:
593 a state-of-the-art review since 2007", *BMJ Open*, vol. 10, no. 1, pp. e029172.
- 594 DeLoach, T. & Beall, J. 2018, "Diuretics: A possible keystone in upholding cognitive health.",
595 *The Mental Health Clinician*, vol. 8, no. 1, pp. 33-40.
- 596 Ding, X., Bucholc, M., Wang, H., Glass, D.H., Wang, H., Clarke, D.H., Bjourson, A.J., Doweey,
597 L.R.C., O'Kane, M., Prasad, G., Maguire, L. & Wong-Lin, K. 2018, "A hybrid computational
598 approach for efficient Alzheimer's disease classification based on heterogeneous data.",
599 *Scientific Reports*, vol. 8, no. 1, pp. 9774.
- 600 Erkinjuntti, T., Ostbye, T., Steenhuis, R. & Hachinski, V. 1997, "The effect of different
601 diagnostic criteria on the prevalence of dementia.", *New England Journal of Medicine*, vol.
602 337, no. 23, pp. 1667-1674.
- 603 Fiford C.M., Nicholas J.M., Biessels G.J., Lane C.A., Cardoso M.J. & Barnes, J. 2020, "High blood
604 pressure predicts hippocampal atrophy rate in cognitively impaired elders.", *Alzheimer's and
605 Dementia: Diagnosis, Assessment and Disease Monitoring*, vol. 12, no. 1) (pagination, pp. Arte
606 Number: e12035. ate of Pubaton: 2020.
- 607 Fink, H.A., Jutkowitz, E., McCarten, J.R., Hemmy, L.S., Butler, M., Davila, H.M.P.A., Ratner, E.,
608 Calvert, C., Barclay, T.R., Brasure, M.M.S.P.H., M.L.I.S., Nelson, V.A. & Kane, R.L. 2018,
609 "Pharmacologic Interventions to Prevent Cognitive Decline, Mild Cognitive Impairment, and
610 Clinical Alzheimer-Type Dementia: A Systematic Review", *Annals of Internal Medicine*, vol.
611 168, no. 1, pp. 39-51.

- 612 Gallacher, J., Elwood, P., Pickering, J., Bayer, A., Fish, M. & BenShlomo, Y. 2012,
613 "Benzodiazepine use and risk of dementia: evidence from the Caerphilly Prospective Study
614 (CaPS)", *Journal of Epidemiology & Community Health*, vol. 66, no. 10, pp. 869-873.
- 615 Gimson A., Schlosser M., Huntley J.D. & Marchant, N.L. 2018, "Support for midlife anxiety
616 diagnosis as an independent risk factor for dementia: A systematic review.", *BMJ Open*, vol.
617 8, no. 4, pp. e019399.
- 618 Glonek, G.F.V., McCullagh, P. 1995, "Multivariate Logistic Models." *Journal of the Royal*
619 *Statistical Society*, vol. 57, pp. 533-546.
- 620 Grodstein F., Skarupski K.A., Bienias J.L., Wilson R.S., Bennett D.A. & Evans, D.A. 2008, "Anti-
621 inflammatory agents and cognitive decline in a bi-racial population.", *Neuroepidemiology*,
622 vol. 30, no. 1, pp. 45-50.
- 623 Han, J., Besser, L.M.M.S.P.H., Xiong, C., Kukull, W.A. & Morris, J.C. 2019, "Cholinesterase
624 Inhibitors May Not Benefit Mild Cognitive Impairment and Mild Alzheimer Disease
625 Dementia", *Alzheimer Disease & Associated Disorders*, vol. 33, no. 2, pp. 87-94.
- 626 Hill, K.S., Bishop, J.R., Palumbo, D. & Sweeney, J.A. 2010, "Effect of second-generation
627 antipsychotics on cognition: current issues and future challenges", *Expert Review of*
628 *Neurotherapeutics*, vol. 10, no. 1, pp. 43-57.
- 629 Hsu, C., Wahlqvist, M.L., Lee, M. & Tsai, H. 2011, "Incidence of dementia is increased in type
630 2 diabetes and reduced by the use of sulfonylureas and metformin.", *Journal of Alzheimer's*
631 *Disease*, vol. 24, no. 3, pp. 485-493.

- 632 Ikeda M., Kataoka H. & Ueno, S. 2017, "Can levodopa prevent cognitive decline in patients
633 with Parkinson's disease?.", *American Journal of Neurodegenerative Diseases*, vol. 6, no. 2,
634 pp. 9-14.
- 635 Imbimbo, B. P., Solfrizzi, V., & Panza, F. 2010, "Are NSAIDs useful to treat Alzheimer's disease
636 or mild cognitive impairment?." *Frontiers in aging neuroscience*, vol. 2, pp. 19.
- 637 Jamsen, K.M.P.D., Ilomaki, J.P.D., Hilmer, S.N.P.D., Jokanovic, N.B.P., Tan, E.C.K.P.D. & Bell,
638 S.J.P.D. 2016, "A systematic review of the statistical methods in prospective cohort studies
639 investigating the effect of medications on cognition in older people", *Research In Social &
640 Administrative Pharmacy*, vol. 12, no. 1, pp. 20-28.
- 641 Kaur, D., Bucholc, M., Finn, D.P., Todd, S., Wong-Lin, K. & McClean, P.L. 2020, "Multi-time-
642 point data preparation robustly reveals MCI and dementia risk factors.", *Alzheimer's &
643 Dementia : Diagnosis, Assessment & Disease Monitoring*, vol. 12, no. 1, pp. e12116.
- 644 Kim, J.Y., Ku, Y.S., Kim, H.J., Trinh, N.T., Kim, W., Jeong, B., Heo, T.Y., Lee, M.K. & Lee, K.E.
645 2019, "Oral diabetes medication and risk of dementia in elderly patients with type 2
646 diabetes.", *Diabetes Research & Clinical Practice*, vol. 154, pp. 116-123.
- 647 Leoutsakos, J. M., Muthen, B. O., Breitner, J. C., Lyketsos, C. G., & ADAPT Research Team
648 (2012). Effects of non-steroidal anti-inflammatory drug treatments on cognitive decline vary
649 by phase of pre-clinical Alzheimer disease: findings from the randomized controlled
650 Alzheimer's Disease Anti-inflammatory Prevention Trial.", *International journal of geriatric
651 psychiatry*, vol. 27, no. 4, pp. 364–374.
- 652 Livingston, G., Huntley, J., Sommerlad, A., Ames, D., Ballard, C., Banerjee, S., Brayne, C., Burns,
653 A., Cohen-Mansfield, J., Cooper, C., Costafreda, S.G., Dias, A., Fox, N., Gitlin, L.N., Howard, R.,

- 654 Kales, H.C., Kivimaki, M., Larson, E.B., Ogunniyi, A., Orgeta, V., Ritchie, K., Rockwood, K.,
655 Sampson, E.L., Samus, Q., Schneider, L.S., Selbaek, G., Teri, L. & Mukadam, N. 2020, "Dementia
656 prevention, intervention, and care: 2020 report of the Lancet Commission", *Lancet*, vol. 396,
657 no. 10248, pp. 413-446.
- 658 McKhann, G., Drachman, D., Folstein, M., Katzman, R., Price, D. & Stadlan, E.M. 1984, "Clinical
659 diagnosis of Alzheimer's disease: report of the NINCDS-ADRDA Work Group under the
660 auspices of Department of Health and Human Services Task Force on Alzheimer's Disease.",
661 *Neurology*, vol. 34, no. 7, pp. 939-944.
- 662 McKhann, G.M., Knopman, D.S., Chertkow, H., Hyman, B.T., Jack, C.R.J., Kawas, C.H., Klunk,
663 W.E., Koroshetz, W.J., Manly, J.J., Mayeux, R., Mohs, R.C., Morris, J.C., Rossor, M.N.,
664 Scheltens, P., Carrillo, M.C., Thies, B., Weintraub, S. & Phelps, C.H. 2011, "The diagnosis of
665 dementia due to Alzheimer's disease: recommendations from the National Institute on Aging-
666 Alzheimer's Association workgroups on diagnostic guidelines for Alzheimer's disease.",
667 *Alzheimer's & Dementia*, vol. 7, no. 3, pp. 263-269.
- 668 Moore, E.M., Mander, A.G., Ames, D., Kotowicz, M.A., Carne, R.P., Brodaty, H., Woodward,
669 M., Boundy, K., Ellis, K.A., Bush, A.I., Faux, N.G., Martins, R., Szoeki, C., Rowe, C., Watters,
670 D.A. & AIBL Investigators 2013, "Increased risk of cognitive impairment in patients with
671 diabetes is associated with metformin.", *Diabetes care*, vol. 36, no. 10, pp. 2981-2987.
- 672 Morris, J.C. 1993, "The Clinical Dementia Rating (CDR): Current version and scoring rules",
673 *Neurology*, vol. 43, no. 11, pp. 2412-2414.
- 674 Morris, J.C., Weintraub, S., Chui, H.C., Cummings, J., Decarli, C., Ferris, S., Foster, N.L., Galasko,
675 D., Graff-Radford, N., Peskind, E.R., Beekly, D., Ramos, E.M. & Kukull, W.A. 2006, "The Uniform

676 Data Set (UDS): clinical and cognitive variables and descriptive data from Alzheimer Disease
677 Centers.", *Alzheimer Disease & Associated Disorders*, vol. 20, no. 4, pp. 210-216.

678 Newcombe, E.A., Camats-Perna, J., Silva, M.L., Valmas, N., Huat, T.J. & Medeiros, R. 2018,
679 "Inflammation: the link between comorbidities, genetics, and Alzheimer's disease", *Journal of*
680 *Neuroinflammation*, vol. 15, no. 1, pp. 276.

681 Nikaido A.M., Ellinwood Jr. E.H., Heatherly D.G. & Gupta, S.K. 1990, "Age-related increase in
682 CNS sensitivity to benzodiazepines as assessed by task difficulty.", *Psychopharmacology*, vol.
683 100, no. 1, pp. 90-97.

684 Nishtala P.S., Salahudeen M.S. & Hilmer, S.N. 2016, "Anticholinergics: theoretical and clinical
685 overview.", *Expert Opinion on Drug Safety*, vol. 15, no. 6, pp. 753-768.

686 Obermann K.R., Morris J.C. & Roe, C.M. 2013, "Exploration of 100 commonly used drugs and
687 supplements on cognition in older adults.", *Alzheimer's and Dementia*, vol. 9, no. 6, pp. 724-
688 732.

689 O'Bryant S.E., Lacritz L.H., Hall J., Waring S.C., Chan W., Khodr Z.G., Massman P.J., Hobson V.
690 & Cullum, C.M. 2010, "Validation of the new interpretive guidelines for the clinical dementia
691 rating scale sum of boxes score in the National Alzheimer's Coordinating Center database.",
692 *Archives of Neurology*, vol. 67, no. 6, pp. 746-749.

693 Ou, Y., Tan, C., Shen, X., Xu, W., Hou, X., Dong, Q., Tan, L. & Yu, J. 2020, "Blood Pressure and
694 Risks of Cognitive Impairment and Dementia: A Systematic Review and Meta-Analysis of 209
695 Prospective Studies", *Hypertension*, vol. 76, no. 1, pp. 217-225.

- 696 Peters, R., Booth, A., Rockwood, K., Peters, J., D'Este, C. & Anstey, K.J. 2019, "Combining
697 modifiable risk factors and risk of dementia: a systematic review and meta-analysis.", *BMJ*
698 *Open*, vol. 9, no. 1, pp. e022846.
- 699 Petersen R.C. & Morris, J.C. 2005, "Mild cognitive impairment as a clinical entity and
700 treatment target.", *Archives of Neurology*, vol. 62, no. 7, pp. 1160-1163.
- 701 Raj, D., Yin, Z., Breur, M., Doorduyn, J., Holtman, I.R., Olah, M., Mantingh-Otter, I.J., Van Dam,
702 D., De Deyn, P.P., den Dunnen, W., Eggen, B.J.L., Amor, S. & Boddeke, E. 2017, "Increased
703 White Matter Inflammation in Aging- and Alzheimer's Disease Brain.", *Frontiers in Molecular*
704 *Neuroscience*, vol. 10, pp. 206.
- 705 Ravona-Springer, R., Heymann, A., Schmeidler, J., Moshier, E., Godbold, J., Sano, M., Leroith,
706 D., Johnson, S., Preiss, R., Koifman, K., Hoffman, H., Silverman, J.M. & Beerli, M.S. 2014,
707 "Trajectories in glycemic control over time are associated with cognitive performance in
708 elderly subjects with type 2 diabetes.", *PLoS ONE [Electronic Resource]*, vol. 9, no. 6, pp.
709 e97384.
- 710 Rouch, L., Cestac, P., Hanon, O., Cool, C., Helmer, C., Bouhanick, B., Chamontin, B., Dartigues,
711 J., Vellas, B. & Andrieu, S. 2015, "Antihypertensive drugs, prevention of cognitive decline and
712 dementia: a systematic review of observational studies, randomized controlled trials and
713 meta-analyses, with discussion of potential mechanisms.", *CNS Drugs*, vol. 29, no. 2, pp. 113-
714 130.
- 715 Salahudeen M.S., Duffull S.B. & Nishtala, P.S. 2015, "Anticholinergic burden quantified by
716 anticholinergic risk scales and adverse outcomes in older people: a systematic review.", *BMC*
717 *geriatrics*, vol. 15, pp. 31.

- 718 Salzman, C. 2020, "Do Benzodiazepines Cause Alzheimer's Disease?," American Journal of
719 Psychiatry, vol. 177, no. 6, pp. 476-478.
- 720 Schneider, L.S., Insel, P.S., Weiner, M.W. & for the Alzheimer's Disease Neuroimaging
721 Initiative 2011, "Treatment With Cholinesterase Inhibitors and Memantine of Patients in the
722 Alzheimer's Disease Neuroimaging Initiative", Archives of Neurology, vol. 68, no. 1, pp. 58-66.
- 723 Shah, K., Qureshi, S.U., Johnson, M., Parikh, N., Schulz, P.E. & Kunik, M.E. 2009, "Does use of
724 antihypertensive drugs affect the incidence or progression of dementia? A systematic
725 review.", American Journal of Geriatric Pharmacotherapy, vol. 7, no. 5, pp. 250-261.
- 726 Trenaman, S.C., Rideout, M. & Andrew, M.K. 2019, "Sex and gender differences in
727 polypharmacy in persons with dementia: A scoping review.", SAGE Open Medicine, vol. 7, pp.
728 2050312119845715.
- 729 Verdoux, H., Lagnaoui, R. & Begaud, B. 2005, "Is benzodiazepine use a risk factor for cognitive
730 decline and dementia? A literature review of epidemiological studies.", Psychological
731 medicine, vol. 35, no. 3, pp. 307-315.
- 732 Wancata, J., Borjesson-Hanson, A., Ostling, S., Sjogren, K. & Skoog, I. 2007, "Diagnostic criteria
733 influence dementia prevalence.", American Journal of Geriatric Psychiatry, vol. 15, no. 12, pp.
734 1034-1045.
- 735 Wu C.Y., Ouk M., Wong Y.Y., Anita N.Z., Edwards J.D., Yang P., Shah B.R., Herrmann N., Lanctot
736 K.L., Kapral M.K., MacIntosh B.J., Rabin J.S., Black S.E. & Swardfager, W. 2020, "Relationships
737 between memory decline and the use of metformin or DPP4 inhibitors in people with type 2
738 diabetes with normal cognition or Alzheimer's disease, and the role APOE carrier status.",
739 Alzheimer's and Dementia, vol. 16, no. 12, pp. 1663-1673.

740 Yasar, Sevil Xia, Jin Yao, Wenliang Furberg, Curt D., Xue, Q.M., Carla I., Fitzpatrick, A.L., Fried,
741 L.P., Kawas, C.H., Sink, K.M., Williamson, J.D., DeKosky, S.T., Carlson, M.C. & For the Ginkgo
742 Evaluation of Memory Study Investigators 2013, "Antihypertensive drugs decrease risk of
743 Alzheimer disease: Ginkgo Evaluation of Memory Study", *Neurology*, vol. 81, no. 10, pp. 896-
744 903.

745 Yeung, A., Kiss, A. & Gallagher, D. 2020, "Intensive control of hypertension and risk of
746 Alzheimer's dementia in older adults with depression.", *International journal of geriatric*
747 *psychiatry*, vol. 35, no. 8, pp. 888-896.

748 Zammitt, N.N.M. & Frier, B.M. 2005, "Hypoglycemia in Type 2 Diabetes: Pathophysiology,
749 frequency, and effects of different treatment modalities", *Diabetes care*, vol. 28, no. 12, pp.
750 2948-2961.

751 Zhang, C., Wang, Y., Wang, D., Zhang, J. & Zhang, F. 2018, "NSAID Exposure and Risk of
752 Alzheimer's Disease: An Updated Meta-Analysis From Cohort Studies.", *Frontiers in aging*
753 *neuroscience*, vol. 10, pp. 83.