

Association of Systemic immune-inflammation index With Short-Term Mortality of Congestive Heart Failure: A Retrospective Cohort Study

1 Yiyang Tang¹, Yilu Feng¹, Qin Chen¹, Xiaofang Zeng¹, Zhenghui Liu², Hui Luo³, Lihuang
2 Zha^{1*} and Zaixin Yu^{1*}

3 ¹ Department of Cardiology, Xiangya Hospital, Central South University, Changsha, Hunan, People's
4 Republic of China

5 ² Department of Neurology, Xiangya Hospital, Central South University, Changsha, Hunan, People's
6 Republic of China

7 ³ Department of Cardiovascular Medicine, the First Hospital of Changsha, Changsha, Hunan,
8 People's Republic of China

9 * **Correspondence:**

10 Zaixin Yu

11 yuzaixin@126.com

12 Lihuang Zha

13 zhalihuang@csu.edu.cn

14 **Keywords:** congestive heart failure¹, systemic immune-inflammation index², mortality³,
15 biomarker⁴, MIMIC-III⁵.

16 **Abstract**

17 **Purpose:** The present study aimed to clarify the potential predictive significance of Systemic
18 immune-inflammation index (SII) in assessing the poor prognosis of critically ill patients with
19 congestive heart failure (CHF).

20 **Methods:** Detailed clinical data were extracted from the Multiparameter Intelligent Monitoring in
21 Intensive Care III database after gaining access and building the local platform. The 30- and 90-day
22 and hospital all-cause mortalities of the patient was the primary outcome, and the readmission rate
23 and the occurrence of major cardiovascular adverse events (MACEs) were the secondary outcomes.
24 the Cox proportional hazard model and Logistic regression analysis were selected to reveal the
25 relationship between SII level and the research outcome. Further, the propensity score matching
26 (PSM) analysis was performed to improve the reliability of results by reducing the imbalance across
27 groups.

28 **Results:** There were a total of 4604 subjects who passed the screening process and entered the
29 subsequent analysis. Multivariate regression analysis showed that after adjusting for possible
30 confounders, including age, heart rate, and albumin, etc., the high level of SII was independently
31 associated with 30- and 90-day and hospital mortality (tertile 3 versus tertile 1: HR, 95% CIs: 1.23,
32 1.04-1.45; 1.21, 1.06-1.39; 1.26, 1.05-1.50) and the incidence of MACEs (tertile 3 versus tertile 1:
33 OR, 95% CI: 1.39, 1.12-1.73) in critically ill patients with CHF, but no significant correlation was
34 found between SII and the readmission rate. Consistently, patients with high SII level still had a
35 significantly higher short-term mortality than patients with low SII in the PSM subset.

36 **Conclusion:** In critically ill patients with CHF, high level SII effectively predict high 30- and 90-day
37 and hospital mortalities, and the high risk of occurrence of MACEs.

38 **1 Introduction**

39 Congestive heart failure (CHF) is defined as a pathological condition in which the cardiac output is
40 insufficient to maintain the perfusion and metabolic needs of various tissues and organs, mainly
41 characterized by the congestion of pulmonary circulation, accompanied by the corresponding clinical
42 manifestations such as shortness of breath and decreased activity tolerance¹. CHF is the severe or
43 terminal stage of most primary cardiovascular diseases and has increasingly become a major public
44 problem threatening human health. In the United States and Europe, more than 1 million heart failure
45 patients are hospitalized each year, and as the population ages, this number is expected to increase by
46 more than 50% in the next 15 years². In addition, although some progress has been made in the
47 treatment in recent years, the prognosis of CHF patients is still poor, with 5-year mortality rate as
48 high as 40-50%³. Therefore, accurate assessment and stratification of prognosis are critical to the
49 clinical management of CHF, and the development of certain prognostic-related biomarkers is also
50 pressing, which can help clinicians to identify high-risk patients early and take more aggressive
51 treatment measures⁴.

52 Although the specific pathogenesis of heart failure remains unclear, abnormal immune activation and
53 chronic inflammation play an important role. The damage, repair and remodeling of myocardium are
54 important links in the occurrence and development of heart failure, of which immune/inflammatory
55 cells (neutrophils, lymphocytes, etc.) and the inflammatory factors (tumor necrosis factor,
56 interleukin-6, etc.) released by them are involved⁵. Inflammatory factors can induce cardiomyocyte
57 hypertrophy, apoptosis and fibrosis, and ultimately lead to adverse cardiac remodeling and
58 progressive left ventricular dysfunction⁶. Inflammatory factors have been considered to be
59 biomarkers for poor prognosis of heart failure, and anti-inflammatory therapy is also expected to
60 become a new target for the treatment of heart failure⁷.

61 Systemic immune-inflammation index (SII) is a composite inflammatory indicator that combines
62 three significant immune cells, including neutrophil, lymphocyte, and platelet, and is considered to
63 be an excellent indicator of local immune response and systemic inflammation⁸. Neutrophils,
64 platelets and the cytokines they produce are mainly related to non-specific immune responses, while
65 lymphocytes are considered to be mainly related to specific immune pathways. Compared with the
66 absolute count of single immune cells, SII has a better representation in reflecting the inflammation
67 status of the body, with better stability. Until now, SII has been confirmed to be closely correlated
68 with the poor prognosis of a variety of cardiovascular diseases, including coronary artery disease⁹,
69 aortic stenosis¹⁰, infective endocarditis¹¹, etc., showing good application prospects, but no studies
70 have shown that SII is correlated with the prognosis of patients with CHF. In view of this, the present
71 study attempted to elucidate the independent association between SII and the occurrence of adverse
72 events such as short-term mortality in critically ill patients with CHF, so as to provide reference for
73 the prevention and treatment of heart failure.

74 **2 Materials and Methods**

75 **2.1 Data Sources**

76 All data used in the research and analysis of this study are derived from MIMIC-III (Medical
77 Information Mart for Intensive Care III) database, a free and open-access large-scale critical care
78 medicine database developed and run by the Massachusetts Institute of Technology for researchers

79 all over the world. Another advantage of this database, in addition to including the detailed clinical
80 data such as demographic data, vital signs, laboratory tests, and various treatment information, is that
81 it provides accurate death information of all subjects, including deaths in the hospital or within 90
82 days after discharge, which makes it possible for the clinicians to carry out the prognostic related
83 research. Besides, since this database has been approved by the local ethics committee as a whole and
84 the individual identifying information of the research subjects has been deleted, this study no longer
85 needs additional ethical approval.

86 **2.2 Population Selection and Exclusion**

87 The subjects of this study are all from the MIMIC-III database¹², and patients who meet all the
88 following requirements are included in the subsequent analysis: (1) Patients diagnosed with CHF
89 based on the ICD-9 code (code 428.0); (2) Adult patients 18 years of age and older; (3) First
90 admission to ICU. Patients who met one of the following criteria were excluded from the study: (1)
91 The length of ICU stay was shorter than 24 hours; (2) Absence of SII results during hospitalization;
92 (3) Survival time was less than 0 (the time of death of some organ donors may be earlier than the
93 admission). The detailed process of inclusion and exclusion of research objects is shown in Figure 1.

94 **2.3 Study Outcomes**

95 The short-term mortality, including the 30- and 90-day and hospital all-cause mortalities of critically
96 ill patients with CHF, were selected as the primary study outcome, while the secondary study
97 outcome events were defined as the patients' readmission rate and the occurrence of major adverse
98 cardiac events (MACEs), which is a composite outcome event, including all-cause death,
99 readmission for acute heart failure, the use of mechanical circulatory support and the implementation
100 of heart transplantation¹³.

101 **2.4 Data Extraction and Integration**

102 Through the PostgreSQL software (version 9.6, <https://www.postgresql.org/>), we extracted detailed
103 clinical data of the research subjects from the MIMIC-III database, including demographic data (age,
104 gender, race, etc.), comorbidities (hypertension, diabetes mellitus, atrial fibrillation, etc.), vital signs
105 (heart rate, blood pressure, respiratory rate, etc.), severity of illness scores (SOFA and SAPSII
106 scores), laboratory tests (blood routine, electrolytes, etc.) and intervention measures (dialysis,
107 mechanical ventilation, etc.). And the value of SII is equal to the product of the platelet count and the
108 neutrophil count divided by the lymphocyte count¹⁴.

109 After separately extracting the required tables from the MIMIC-III database, the Stata software
110 (version 16, <https://www.stata.com/>) was used to process and merge these original table and generate
111 a complete table that can be used for subsequent analysis. Use the "winsorize" function to identify
112 and process outliers, and fill in missing values through multiple compensation methods.

113 **2.5 Statistical Analyses**

114 The continuous variables were presented in the form of mean \pm standard deviation (SD) or median
115 (interquartile range). If continuous variables satisfy both normal distribution and homogeneity of
116 variance, one-way analysis of variance is used for analysis, while the Mann-Whitney U test was
117 conducted if the normal distribution or homogeneity of variance were not satisfied. Categorical
118 variables are expressed in the form of the number of cases (percentage), with the chi-square test (or
119 Fisher's exact method) for analysis.

120 We constructed a generalized additive model (GAM) to determine the non-linear relationship
121 between SII and 30- and 90-day all-cause mortality in critically ill patients with CHF. In addition, we
122 also visually show the relationship between SII and patients' survival through the Kaplan-Meier (K-
123 M) curve, and use the Log-rank test for hypothesis testing.

124 In order to relieve the interference of possible confounding factors on the results, we completed
125 univariate and multivariate regression analysis to further clarify the relationship between SII and
126 outcome variables. In the crude model, no variables were adjusted. In model I, the age, gender, and
127 race variables were adjusted, while model II further adjusted other 13 variables on the basis of these
128 variables of model II, including heart rate, blood urea nitrogen (BUN), albumin, troponin T (cTnT),
129 N-terminal probrain natriuretic peptide (NT-proBNP), urine output of first day, cardiac index, the
130 type of first ICU admission, the use of mechanical ventilation and vasopressor, pneumonia, and liver
131 diseases. The selection of confounding factors follows the following principles¹⁵: (1) A certain factor
132 has an influence of more than 10% on the research variable; (2) Some factors may have a significant
133 impact on the outcome variable based on past experience. Besides, we use the variance inflation
134 factor (VIF) to test the multicollinearity between variables with 5 as the threshold, and the variables
135 with a high degree of collinearity, serum chloride, were deleted to avoid over-fitting of the model.
136 The Cox regression analysis was used to determine the relationship between SII and short-term
137 mortality in critically ill patients with CHF, while Logistic regression analysis was used to analyze
138 the association between SII and readmission rates or MACEs.

139 To further enhance the credibility of our analysis, we performed the subgroup analysis and
140 propensity score matching (PSM) analysis. First, By the subgroup analysis, determine whether the
141 correlation between the SII and the high 30-day all-cause mortality in critically ill patients with CHF
142 is consistent across various subgroups stratified mainly by comorbidities, and reflect the stability of
143 SII as a prognostic marker. The optimal cut-off value of SII for the short-term mortality was
144 determined by the X-tile (version 3.6.1, Yale University School of Medicine) software, and then the
145 entire study population was divided into two groups, namely the high SII group and the low SII
146 group. In this study, all variables with uneven distribution between the two groups of patients were
147 included in the PSM model as covariates, and the corresponding propensity score was calculated by
148 Logistic regression. Then the two groups of individuals with similar propensity scores were matched
149 by 1:1 using nearest neighbor matching method with a caliper width of 0.05, and the histogram of the
150 propensity score distribution was draw, which was carried out through the Stata software. Then, K-M
151 curves were depicted and Cox regression analysis was conducted in the matching cohort after PSM,
152 which further validated SII as an independent risk factor for poor prognosis in the critically ill
153 patients with CHF.

154 The statistical analysis above was conducted by EmpowerStats software (version 2.20,
155 <http://www.empowerstats.com/cn/>, X&Y solutions, Inc, Boston, MA) and R software (version 3.4.3).
156 $p < 0.05$ (two-sided) was considered statistically significant.

157 **3 Results**

158 **3.1 Clinical Characteristics of Study Subjects**

159 The study subjects were screened according to the process shown in Figure 1, and 4604 subjects were
160 finally included. The demographic data, vital signs, comorbidities, treatment, scores and laboratory
161 examinations and other relevant information are shown in Table 1 in detail. In general, the study
162 subjects included were a little old, with a median age of 74.91 years old, mainly male patients,
163 reaching 2436, accounting for 52.89%. And the majority of the subjects were whites, accounting for

164 72.71%, blacks only 7.21%, and other races including Asians accounted for 20.08%. The duration of
165 follow-up was 90 days, of which 3226 survived and 1380 died due to various reasons before the end
166 of the study. SII (213.97 vs 163.11, $p < 0.001$) was significantly higher in the non-survivor cohort.
167 Compared with the survivor group, older patients were identified more frequently in the non-survivor
168 group, with more unstable vital signs, higher incidence of comorbidities such as VHD, atrial
169 fibrillation, and renal failure, as well as higher SOFA and SAPSII scores.

170 **3.2 SII Distinguishing a Poor Short-term Prognosis**

171 GAM analysis was used to identify the non-linear correlation between SII and the short-term all-
172 cause mortality of patients, which showed that there was a U-shaped curve relationship between SII
173 and 30-day (Figure 2A) and 90-day (Figure 2B) all-cause mortality in critically ill patients with CHF,
174 indicating that higher or lower SII may be associated with increased mortality. The K-M survival
175 curve (Figure 3) also showed that compared with the low SII group, patients with high SII level had a
176 lower overall survival rate and shorter survival time, with a statistically significant p value.

177 In order to verify the independent relationship between SII and the poor short-term mortality of CHF
178 patients, we performed the univariate and multivariate Cox regression analysis (Table 2), with SII
179 stratified by tertiles. In crude model, the third tertile of SII increased significantly the risk of 30- (HR,
180 95% CI: 1.73, 1.48-2.03) and 90-day (HR, 95% CI: 1.65, 1.45-1.88) and hospital (HR, 95% CI: 1.61,
181 1.36-1.91) all-cause mortalities compared with the first tertile. In multivariate model I, after adjusting
182 for age, sex, and ethnicity, the third tertile of SII group also suffered from the higher risk of 30- (HR,
183 95% CI: 1.63, 1.40-1.91) and 90-day (HR, 95% CI: 1.57, 1.38-1.79) and hospital (HR, 95% CI: 1.45,
184 1.22-1.72) all-cause mortalities. In model II, in addition to adjusting for the variables in model I and
185 other possible confounders such as pneumonia, the use of dialysis, and BUN level, high levels of SII
186 were still strongly associated with poor 30- (HR, 95% CI: 1.23, 1.04-1.45) and 90-day (HR, 95% CI:
187 1.21, 1.06-1.39) and hospital (HR, 95% CI: 1.26, 1.05-1.50) all-cause mortalities.

188 **3.3 Association between SII and readmission and MACEs**

189 For MACEs, a similar trend was observed. In model II (Table 3), patients with an $SII \geq 2730.11$ were
190 still at higher incidence of MACEs (OR, 95% CI: 1.39, 1.12-1.73). However, in the multivariate
191 regression analysis, there was no obvious independent correlation between SII and readmission rate
192 in the critically ill patients with CHF (tertile 3 versus tertile 1: OR, 95% CI: 0.97, 0.81-1.15).

193 **3.4 Subgroup analyses**

194 The subgroup analysis was conducted to reveal the correlation between SII and 30-day mortality
195 across comorbidities and different parameters, and the results were shown in Table 4. First, the
196 results of the study showed that in all subgroups, the increase in SII level was closely related to the
197 increase in the 30-day all-cause mortality of critically ill patients with CHF. Besides, most of the
198 stratification factors have not been found to have a significant impact on the relationship between the
199 SII and 30-day all-cause mortality in critically (interaction p value > 0.05), except for hyperlipemia
200 ($p = 0.006$) and AMI ($p = 0.016$). The above results indicated that SII has good robustness as a marker
201 for poor prognosis of CHF.

202 **3.5 Prognostic value of SII after PSM**

203 Determine the optimal cut-off value of SII for 90-day all-cause mortality of critically ill patients with
204 CHF through X-tile software, which is 5533.4. Subjects were divided into two groups according to

205 the cut-off value, and their clinical characteristics were summarized in Table 5, most of which were
206 unevenly distributed across the two groups. In order to effectively balance these confounding factors
207 and improve the credibility of our results, we conducted a PSM analysis with 1:1 matching. After
208 PSM, 602 pairs of research objects were generated and the difference of almost all variables were
209 balanced between the two groups, with a good matching performance (Figure 4). At the same time,
210 after PSM, compared with the low SII level group, subjects in the high SII level group still
211 underwent higher 30- (24.9% vs 33.2%, $p=0.002$) and 90-day (35.0% vs 42.0%, $p=0.013$) and
212 hospital (22.4% vs 27.7%, $p=0.033$) all-cause mortality, with shorter survival time (Table 5 and
213 Figure 5). Besides, after adjusting for these covariable in the model II, the increased SII was also
214 associated with increased risk of short-term all-cause mortality in critically ill patients with CHF after
215 PSM and the results were shown in Figure 6 in the form of a forest map.

216 **4 Discussion**

217 CHF is widespread all over the world, with gradually increasing incidence with age, and has become
218 one of the diseases with the highest rates of hospitalizations and deaths in the world, bringing about
219 enormous medical expenditure and social burden, especially in developing countries¹⁶. In addition to
220 exploring promising treatments, the development of novel prognostic markers for risk stratification
221 of patients is also of great value for improving the prognosis of patients. As we all know, as a
222 commonly used indicator of heart failure, NT-proBNP can make a good performance in prognostic
223 evaluation. However, the clinical applications of NT-proBNP for risk assessment has some
224 drawbacks and problems. First, compared to the real value, the detection of NT-proBNP tend to be
225 underestimated because of the short half-life. Moreover, the test of NT-proBNP may be affected by
226 various factors such as age, gender, and kits¹⁷. Therefore, the search for more possible biomarkers
227 has gradually attracted the attention of researchers and clinicians.

228 In the present study, we extracted the clinical data of 4604 critically ill patients who diagnosed with
229 CHF between 2003 and 2010 in MIMIC-III database, and analyzed the relationship between SII and
230 short-term prognosis by univariate and multivariate regression analyses for the first time. And the
231 results have verified that SII could be an independent biomarker for poor short-term prognosis of
232 CHF. There was a nonlinear relationship between SII and 30- and 90-day mortalities. And the higher
233 SII level, the higher risk of 30- and 90-day and hospital mortalities, as well as the higher incidence of
234 MACEs. The correlation remained significant after adjusting for possible confounders, stratifying
235 according to comorbidities, and PSM matching, respectively.

236 Inflammation, a widely accepted hallmark of heart failure, has been proven to play an indispensable
237 role in the pathogenesis of heart failure¹⁸. The increase and activation of inflammation-related
238 cytokines not only present a reflection of the activation of inflammation in vivo, but have also been
239 identified as being associated with poor prognosis in heart failure. Tumor necrosis factor α (TNF- α)
240 was the first cytokine found to be significantly elevated in the serum of patients with heart failure,
241 which could directly induce myocardial apoptosis and necrosis, bringing about ventricular adverse
242 remodeling¹⁹. The elevated levels of TNF- α often indicated impaired cardiac systolic function and
243 poor long-term survival²⁰. In addition, interleukin 6 (IL-6), another classic cytokine mainly derived
244 from monocytes, could be significantly increased in patients with left ventricular systolic dysfunction
245 without clinical symptoms, and may be a sensitive indicator for the early diagnosis of heart failure²¹.
246 IL-6 was also positively correlated with the severity of heart failure, the concentration of which was
247 negatively correlated with left ventricular ejection fraction and overall survival²². Although these
248 inflammatory molecules had good performance in the prognostic evaluation of patients, the
249 expensive detection cost limited their clinical application. As a novel biomarker, SII can

250 systematically and comprehensively reflect the status of inflammation in vivo. Blood routine is a
251 routine examination for almost all hospitalized patients. It is simple, fast, and inexpensive. Compared
252 with NT-proBNP, cytokines and other prognostic indicators, SII can effectively screen high-risk
253 patients, guide the formulation of individualized treatment plans and improve the prognosis of
254 patients without additional cost, with a broad application prospect, especially in underdeveloped
255 areas.

256 The mechanisms of the relationship between SII and adverse prognosis of CHF remains unclear, and
257 possible explanations are as follows. Recently, it has been revealed that circulating immune cells and
258 their subtypes had a vital indicative effect on the prognosis of cardiovascular diseases²³. SII was a
259 prognostic indicator that integrates three circulating immune cells, including neutrophils,
260 lymphocytes, and platelets, the increase of which indicates either a relative increase in platelets and
261 neutrophils counts or a relative decrease in lymphocytes. Neutrophils are the main component of
262 white blood cells, accounting for 60-70% of the total, and play an important role in the non-specific
263 immune system. In the inflammatory response, neutrophils react rapidly, with strong chemotaxis and
264 phagocytosis, and participate in the progression of various cardiovascular diseases, including heart
265 failure²⁴. In addition, neutrophils could contribute to oxidative stress and endothelial dysfunction by
266 releasing a large amount of myeloperoxidase, NADPH oxidase, and so on²⁵. According to a
267 community-based study²⁶, absolute neutrophils can effectively predict the increased incidence of
268 acute decompensated heart failure after acute myocardial infarction, and it was also an independent
269 risk factor for death²⁷. Lymphocytes mainly consist of two subtype including T and B cells, which
270 were often associated with the specific immunity. Several previous studies have reported that
271 lymphocyte counts in patients with heart failure were lower than in the normal population and
272 lymphopenia served as an independent predictor of poor survival of patients with chronic and
273 advanced heart failure^{28,29}. Lymphopenia was considered to be an important feature of systemic
274 inflammation, which may be caused by the following mechanisms. First, the circulating lymphocytes
275 were attracted into the cardiac tissue, leading to its redistribution. Then, lymphopenia was related to
276 the activation of renin-angiotensin-aldosterone hormone and the adrenergic nervous system, which
277 could exert pro-apoptotic effects on lymphocytes²⁹. Platelets were differentiated from the
278 mononuclear-phagocyte system and were the key mediator linking the two pathological processes of
279 inflammation and thrombosis³⁰. On the one hand, platelets were the main effector molecules for
280 hemostasis after cardiovascular injury. On the other hand, the activation of platelets plays a major
281 role in pathogenic thrombosis and participates in the pathogenesis of many groups of cardiovascular
282 diseases, including coronary heart disease³¹. Moreover, Platelets interacted with leukocytes and their
283 subtypes (neutrophil, lymphocytes, etc.) and endothelial cells and activated them, inducing monocyte
284 adhesion and transport, releasing inflammatory factors such as TNF- α and IL-1, which together
285 promoted local inflammation and fibrosis in heart failure³¹. The study by Kandis³² et al. demonstrated
286 that mean platelet volume (MPV), indicating the activation of platelets, increased significantly in
287 decompensated heart failure patients. In addition, MPV at admission was independently associated
288 with the hospital and 6-month mortalities.

289 But at the same time, there were certain limitations in this study. First, the present study was
290 conducted at a single center and did not validate the prognostic value of SII in a validation cohort.
291 Second, the clinical data were collected retrospectively from databases and it was difficult to ensure
292 that variables were evenly distributed across groups, although multiple regression models were
293 conducted to adjust for confounders and PSM analysis was used to minimize inter-group differences
294 in baseline characteristics. Third, some significant variables may be omissive due to the lack of data.
295 Last, this study was unable to determine the underlying mechanism of the association between high
296 SII and poor prognosis of CHF patients, and further experiments are necessary.

297 **5 Conclusion**

298 In summary, the high level of SII is closely related to the poor short-term prognosis in critically ill
299 patients with CHF, including 30- and 90-day and hospital all-cause mortality, as well as the
300 occurrence of MACEs, and is expected to be a simple and effective prognostic evaluation indicator.

301 **6 Conflict of Interest**

302 All authors declare that there is no conflict of interest.

303 **7 Author Contributions**

304 Zaixin Yu and Lihuang Zha are the senior author who conceived and designed the study. Yiyang
305 Tang and Qin Chen collected and analyzed the clinical data. Yiyang Tang drafted the manuscript.
306 Yilu Feng and Xiaofang Zeng participated in the implementation of statistical methods in this study
307 and put forward constructive suggestions. Zhenghui Liu and Hui Luo reviewed the study and
308 participated in the interpretation of the results. All authors gave final approval of the version to be
309 published, and agree to be accountable for all aspects of the work.

310 **8 Funding**

311 Our study was supported by the National Natural Science Foundation of China (81873416), the Key
312 Research and Development Program of Hunan Province (2020SK2065) and Natural Science
313 Foundation Project of Hunan Province (2020JJ4634).

314 **9 Data availability**

315 Publicly available datasets were analyzed in this study. This data can be extracted from Monitoring in
316 Intensive Care Database III version 1.4 (MIMIC-III v.1.4) after passing on the required courses and
317 obtaining the authorization.

318 **Reference styles**

- 319 1. Sun D, Zhang F, Ma T, Zhang Y, Liang Z. Atorvastatin alleviates left ventricular remodeling
320 in isoproterenol-induced chronic heart failure in rats by regulating the RhoA/Rho kinase
321 signaling pathway. *Pharmacol Rep.* 2020;72(4):903-911.
- 322 2. Povsic TJ. Emerging Therapies for Congestive Heart Failure. *Clin Pharmacol Ther.*
323 2018;103(1):77-87.
- 324 3. Chen J, Normand SL, Wang Y, Krumholz HM. National and regional trends in heart failure
325 hospitalization and mortality rates for Medicare beneficiaries, 1998-2008. *JAMA.*
326 2011;306(15):1669-1678.
- 327 4. Xu M, Zhang L, Song S, et al. Hydrogen sulfide: Recent progress and perspectives for the
328 treatment of dermatological diseases. *J Adv Res.* 2021;27:11-17.
- 329 5. Li H, Chen C, Wang DW. Inflammatory Cytokines, Immune Cells, and Organ Interactions in
330 Heart Failure. *Front Physiol.* 2021;12:695047.
- 331 6. Bradham WS, Bozkurt B, Gunasinghe H, Mann D, Spinale FG. Tumor necrosis factor-alpha
332 and myocardial remodeling in progression of heart failure: a current perspective. *Cardiovasc*
333 *Res.* 2002;53(4):822-830.

- 334 7. Mann DL. Innate immunity and the failing heart: the cytokine hypothesis revisited. *Circ Res.*
335 2015;116(7):1254-1268.
- 336 8. Wang BL, Tian L, Gao XH, et al. Dynamic change of the systemic immune inflammation
337 index predicts the prognosis of patients with hepatocellular carcinoma after curative resection.
338 *Clin Chem Lab Med.* 2016;54(12):1963-1969.
- 339 9. Yang YL, Wu CH, Hsu PF, et al. Systemic immune-inflammation index (SII) predicted
340 clinical outcome in patients with coronary artery disease. *Eur J Clin Invest.*
341 2020;50(5):e13230.
- 342 10. Tosu AR, Kalyoncuoglu M, Biter HI, et al. Prognostic Value of Systemic Immune-
343 Inflammation Index for Major Adverse Cardiac Events and Mortality in Severe Aortic
344 Stenosis Patients after TAVI. *Medicina (Kaunas).* 2021;57(6).
- 345 11. Agus HZ, Kahraman S, Arslan C, et al. Systemic immune-inflammation index predicts
346 mortality in infective endocarditis. *J Saudi Heart Assoc.* 2020;32(1):58-64.
- 347 12. Johnson AE, Pollard TJ, Shen L, et al. MIMIC-III, a freely accessible critical care database.
348 *Sci Data.* 2016;3:160035.
- 349 13. Li W, Huang A, Zhu H, et al. Gut microbiota-derived trimethylamine N-oxide is associated
350 with poor prognosis in patients with heart failure. *Med J Aust.* 2020;213(8):374-379.
- 351 14. Hu B, Yang XR, Xu Y, et al. Systemic immune-inflammation index predicts prognosis of
352 patients after curative resection for hepatocellular carcinoma. *Clin Cancer Res.*
353 2014;20(23):6212-6222.
- 354 15. Jaddoe VW, de Jonge LL, Hofman A, Franco OH, Steegers EA, Gaillard R. First trimester
355 fetal growth restriction and cardiovascular risk factors in school age children: population
356 based cohort study. *BMJ.* 2014;348:g14.
- 357 16. Savarese G, Lund LH. Global Public Health Burden of Heart Failure. *Card Fail Rev.*
358 2017;3(1):7-11.
- 359 17. Cho JH, Cho HJ, Lee HY, et al. Neutrophil-Lymphocyte Ratio in Patients with Acute Heart
360 Failure Predicts In-Hospital and Long-Term Mortality. *J Clin Med.* 2020;9(2).
- 361 18. Dick SA, Epelman S. Chronic Heart Failure and Inflammation: What Do We Really Know?
362 *Circ Res.* 2016;119(1):159-176.
- 363 19. Anker SD, von Haehling S. Inflammatory mediators in chronic heart failure: an overview.
364 *Heart.* 2004;90(4):464-470.
- 365 20. Rauchhaus M, Doehner W, Francis DP, et al. Plasma cytokine parameters and mortality in
366 patients with chronic heart failure. *Circulation.* 2000;102(25):3060-3067.
- 367 21. Plenz G, Song ZF, Tjan TD, et al. Activation of the cardiac interleukin-6 system in advanced
368 heart failure. *Eur J Heart Fail.* 2001;3(4):415-421.
- 369 22. Markousis-Mavrogenis G, Tromp J, Ouwerkerk W, et al. The clinical significance of
370 interleukin-6 in heart failure: results from the BIOSTAT-CHF study. *Eur J Heart Fail.*
371 2019;21(8):965-973.
- 372 23. Strassheim D, Dempsey EC, Gerasimovskaya E, Stenmark K, Karoor V. Role of
373 Inflammatory Cell Subtypes in Heart Failure. *J Immunol Res.* 2019;2019:2164017.

- 374 24. Bonaventura A, Montecucco F, Dallegri F, et al. Novel findings in neutrophil biology and
375 their impact on cardiovascular disease. *Cardiovasc Res.* 2019;115(8):1266-1285.
- 376 25. Swirski FK, Nahrendorf M. Leukocyte behavior in atherosclerosis, myocardial infarction, and
377 heart failure. *Science.* 2013;339(6116):161-166.
- 378 26. Arruda-Olson AM, Reeder GS, Bell MR, Weston SA, Roger VL. Neutrophilia predicts death
379 and heart failure after myocardial infarction: a community-based study. *Circ Cardiovasc Qual*
380 *Outcomes.* 2009;2(6):656-662.
- 381 27. Uthamalingam S, Patvardhan EA, Subramanian S, et al. Utility of the neutrophil to
382 lymphocyte ratio in predicting long-term outcomes in acute decompensated heart failure. *Am*
383 *J Cardiol.* 2011;107(3):433-438.
- 384 28. Vaduganathan M, Ambrosy AP, Greene SJ, et al. Predictive value of low relative lymphocyte
385 count in patients hospitalized for heart failure with reduced ejection fraction: insights from
386 the EVEREST trial. *Circ Heart Fail.* 2012;5(6):750-758.
- 387 29. Charach G, Grosskopf I, Roth A, et al. Usefulness of total lymphocyte count as predictor of
388 outcome in patients with chronic heart failure. *Am J Cardiol.* 2011;107(9):1353-1356.
- 389 30. Ye GL, Chen Q, Chen X, et al. The prognostic role of platelet-to-lymphocyte ratio in patients
390 with acute heart failure: A cohort study. *Sci Rep.* 2019;9(1):10639.
- 391 31. Glezeva N, Gilmer JF, Watson CJ, Ledwidge M. A Central Role for Monocyte-Platelet
392 Interactions in Heart Failure. *J Cardiovasc Pharmacol Ther.* 2016;21(3):245-261.
- 393 32. Kandis H, Ozhan H, Ordu S, et al. The prognostic value of mean platelet volume in
394 decompensated heart failure. *Emerg Med J.* 2011;28(7):575-578.

395

396

397

398

399

400

401

402

403

404

405

406

407

408 **Table 1.** The baseline clinical characteristics of critically ill patients with CHF.

Parameter	All(n=4606)	Survivors (n=3226)	Non-survivors (n=1380)	<i>p</i> value
Demographics				
Age, years	74.91 (64.06-83.07)	72.70 (61.97-81.65)	78.94 (69.40-84.82)	<0.001
Male, n (%)	2436 (52.89%)	1690 (52.39%)	746 (54.06%)	0.298
Ethnicity, n (%)				<0.001
White	3349 (72.71%)	2361 (73.19%)	988 (71.59%)	
Black	332 (7.21%)	254 (7.87%)	78 (5.65%)	
Others	925 (20.08%)	611 (18.94%)	314 (22.75%)	
Vital signs				
HR, beats/minute	85.02 (74.53-96.54)	84.33 (74.33-95.77)	86.67 (75.24-98.65)	<0.001
RR, times/minute	19.42 (16.87-22.38)	19.17 (16.76-21.91)	20.03 (17.24-23.45)	<0.001
SBP, mmHg	113.64 (104.46-125.96)	114.89 (105.50-126.98)	111.04 (101.60-123.48)	<0.001
DBP, mmHg	56.93 (50.87-63.71)	57.85 (51.64-64.34)	55.10 (49.46-61.64)	<0.001
Temperature, °C	36.76 (36.37-37.21)	36.80 (36.42-37.22)	36.65 (36.26-37.13)	<0.001
SpO ₂ , %	97.23 (95.74-98.46)	97.25 (95.81-98.49)	97.19 (95.52-98.40)	0.018
Weight, kg	77.75 (64.70-93.60)	79.80 (65.60-96.00)	73.80 (62.00-88.00)	<0.001
Therapies, n (%)				
ACEI	1266 (27.49%)	1012 (31.37%)	254 (18.41%)	<0.001
ARB	183 (3.97%)	151 (4.68%)	32 (2.32%)	<0.001
β-blocker	2827 (61.38%)	2074 (64.29%)	753 (54.57%)	<0.001
Digoxin	475 (10.31%)	303 (9.39%)	172 (12.46%)	0.002
Furosemide	3190 (69.26%)	2275 (70.52%)	915 (66.30%)	0.004
Statins	1451 (31.50%)	1121 (34.75%)	330 (23.91%)	<0.001
Dialysis	478 (10.38%)	278 (8.62%)	200 (14.49%)	<0.001
Vasopressor	1234 (26.79%)	727 (22.54%)	507 (36.74%)	<0.001
Ventilation	1879 (40.79%)	1133 (35.12%)	746 (54.06%)	<0.001
Assisted circulation	282 (6.12%)	186 (5.77%)	96 (6.96%)	0.123

409 **Table 1.** Continued.

Parameter	All(n=4606)	Survivors (n=3226)	Non-survivors (n=1380)	p value
Laboratory events				
Hemoglobin, g/dl	10.90 (9.70-12.30)	11.10 (9.80-12.50)	10.70 (9.40-11.90)	<0.001
Creatinine, mg/dl	1.20 (0.90-1.80)	1.20 (0.90-1.70)	1.30 (0.90-2.10)	<0.001
BUN, mg/dl	27.00 (18.00-43.00)	25.00 (17.00-40.00)	33.00 (21.00-51.00)	<0.001
Glucose, mg/dl	135.33 (115.00-166.12)	134.23 (115.47-164.03)	137.71 (114.36-170.52)	0.111
Sodium, mmol/L	139.00 (136.00-141.00)	139.00 (136.00-141.00)	138.00 (135.00-141.00)	0.023
Potassium, mmol/L	4.20 (3.80-4.60)	4.10 (3.70-4.60)	4.20 (3.80-4.70)	0.002
Chloride, mmol/L	103.00 (99.00-107.00)	103.00 (99.25-107.00)	103.00 (99.00-107.00)	0.035
Bicarbonate, mmol/L	24.00 (21.00-28.00)	25.00 (22.00-28.00)	24.00 (20.00-27.00)	<0.001
PT, second	14.30 (13.20-16.80)	14.20 (13.10-16.50)	14.80 (13.40-17.90)	<0.001
APTT, second	31.80 (27.30-40.40)	31.30 (27.10-40.20)	32.70 (27.87-41.10)	0.001
Lactate, mmol/L	1.82 (1.30-2.90)	1.80 (1.20-2.83)	2.00 (1.30-3.00)	<0.001
Albumin, g/dL	3.00 (2.56-3.40)	3.00 (2.60-3.42)	2.89 (2.45-3.24)	<0.001
Bilirubin, mg/dL	1.40 (0.60-3.05)	1.40 (0.60-3.00)	1.41 (0.60-3.10)	0.339
ALT, IU/L	60.00 (22.00-298.33)	69.00 (23.92-327.15)	45.00 (19.00-207.75)	<0.001
NT-proBNP, ng/ml	10.98 (4.67-18.83)	10.70 (4.26-18.34)	11.91 (5.67-19.96)	<0.001
cTnT, ng/mL	1.34 (0.10-2.87)	1.46 (0.11-2.94)	1.12 (0.09-2.58)	<0.001
CI, L/min/m ²	2.76 (2.13-3.47)	2.75 (2.13-3.48)	2.78 (2.14-3.45)	0.626
Urine output, L	1.54 (0.89-2.44)	1.73 (1.02-2.65)	1.14 (0.67-1.87)	<0.001
SII ×10	174.76 (92.24-344.55)	163.11 (88.62-309.02)	213.97 (105.80-430.34)	<0.001
Hospitalization type				<0.001
Emergency, n (%)	4062 (88.19%)	2804 (86.92%)	1258 (91.16%)	
Elective, n (%)	367 (7.97%)	300 (9.30%)	67 (4.86%)	
First ICU admission				<0.001
CCU, n (%)	1236 (26.83%)	898 (27.84%)	338 (24.49%)	
MICU, n (%)	2005 (43.53%)	1308 (40.55%)	697 (50.51%)	

410 **Table 1.** Continued.

Parameter	All(n=4606)	Survivors (n=3226)	Non-survivors (n=1380)	p value
Comorbidities, n (%)				
Hypertension	937 (20.34%)	655 (20.30%)	282 (20.43%)	0.919
Hyperlipemia	1260 (27.36%)	975 (30.22%)	285 (20.65%)	<0.001
Diabetes mellitus	1657 (35.97%)	1218 (37.76%)	439 (31.81%)	<0.001
Atrial fibrillation	2077 (45.09%)	1361 (42.19%)	716 (51.88%)	<0.001
AMI	346 (7.51%)	241 (7.47%)	105 (7.61%)	0.871
VHD	463 (10.05%)	289 (8.96%)	174 (12.61%)	<0.001
Peripheral vascular	577 (12.53%)	397 (12.31%)	180 (13.04%)	0.489
Pulmonary circulation	292 (6.34%)	183 (5.67%)	109 (7.90%)	0.005
Pneumonia	1350 (29.31%)	858 (26.60%)	492 (35.65%)	<0.001
COPD	245 (5.32%)	156 (4.84%)	89 (6.45%)	0.025
Liver diseases	232 (5.04%)	138 (4.28%)	94 (6.81%)	<0.001
Renal failure	1120 (24.32%)	757 (23.47%)	363 (26.30%)	0.040
Stroke	250 (5.43%)	148 (4.59%)	102 (7.39%)	<0.001
Hypothyroidism	555 (12.05%)	392 (12.15%)	163 (11.81%)	0.746
Malignancy	253 (5.49%)	128 (3.97%)	125 (9.06%)	<0.001
Depression	359 (7.79%)	276 (8.56%)	83 (6.01%)	0.003
Scores				
SOFA	5.00 (3.00-7.00)	4.00 (3.00-6.00)	6.00 (4.00-8.00)	<0.001
SAPSII	40.00 (32.00-49.00)	38.00 (30.00-46.00)	47.00 (39.00-56.00)	<0.001
Length of ICU stay, h	94.00 (50.00-187.00)	88.00 (48.00-166.75)	122.00 (62.00-240.25)	<0.001

411

412

413

414

415

416 **Table 2.** The univariate and multivariate Cox regression analysis exploring the association of SII
 417 tertile with short-term mortality of critically ill patients with CHF.

	Crude		Model I		Model II	
	HR (95% CIs)	P value	HR (95% CIs)	P value	HR (95% CIs)	P value
30-day all-cause mortality						
SII	1.00 (1.00, 1.00)	<0.001	1.00 (1.00, 1.00)	<0.0001	1.00 (1.00, 1.00)	<0.0001
SII (tertile)						
<1144.28	1 (ref)		1 (ref)		1 (ref)	
≥1144.28, <2730.11	1.17 (0.99, 1.38)	0.067	1.14 (0.97, 1.35)	0.112	1.05 (0.89, 1.25)	0.524
≥2730.11	1.73 (1.48, 2.03)	<0.001	1.63 (1.40, 1.91)	<0.001	1.23 (1.04, 1.45)	0.011
P for trend	<0.001		<0.001		<0.001	
90-day all-cause mortality						
SII	1.00 (1.00, 1.00)	<0.001	1.00 (1.00, 1.00)	<0.0001	1.00 (1.00, 1.00)	0.001
SII (tertile)						
<1144.28	1 (ref)		1 (ref)		1 (ref)	
≥1144.28, <2730.11	1.12 (0.97, 1.28)	0.114	1.10 (0.96, 1.27)	0.168	1.02 (0.88, 1.17)	0.820
≥2730.11	1.65 (1.45, 1.88)	<0.001	1.57 (1.38, 1.79)	<0.001	1.21 (1.06, 1.39)	0.005
P for trend	<0.001		<0.001		<0.001	
Hospital all-cause mortality						
SII	1.00 (1.00, 1.00)	<0.001	1.00 (1.00, 1.00)	<0.0001	1.00 (1.00, 1.00)	0.002
SII (tertile)						
<1144.28	1 (ref)		1 (ref)		1 (ref)	
≥1144.28, <2730.11	1.27 (1.06, 1.52)	0.008	1.21 (1.01, 1.45)	0.035	1.17 (0.97, 1.40)	0.096
≥2730.11	1.61 (1.36, 1.91)	<0.001	1.45 (1.22, 1.72)	<0.001	1.26 (1.05, 1.50)	0.011
P for trend	<0.001		<0.001		<0.001	

418

419

420

421 **Table 3.** The univariate and multivariate Logistic regression analysis exploring the association of SII
 422 tertile with readmission and MACEs of critically ill patients with CHF.

	Crude		Model I		Model II	
	OR (95% CIs)	P value	OR (95% CIs)	P value	OR (95% CIs)	P value
Readmission						
SII (tertile)						
<1144.28	1 (ref)		1 (ref)		1 (ref)	
≥1144.28, <2730.11	0.91 (0.77, 1.07)	0.253	0.94 (0.80, 1.11)	0.472	0.94 (0.80, 1.11)	0.484
≥2730.11	0.88 (0.75, 1.04)	0.129	0.93 (0.78, 1.10)	0.392	0.97 (0.81, 1.15)	0.703
P for trend	<0.001		<0.001		<0.001	
MACEs						
SII (tertile)						
<1144.28	1 (ref)		1 (ref)		1 (ref)	
≥1144.28, <2730.11	1.17 (1.02, 1.35)	0.030	1.17 (1.02, 1.35)	0.028	0.92 (0.74, 1.13)	0.417
≥2730.11	2.01 (1.73, 2.32)	<0.001	2.02 (1.74, 2.35)	<0.001	1.39 (1.12, 1.73)	0.003
P for trend	<0.001		<0.001		<0.001	

423

424

425

426

427

428

429

430

431

432

433

434

435 **Table 4.** Subgroup analysis of the relationship between SII and 30-day all-cause mortality.

	N	SII			P for interaction
		<1144.28	≥1144.28, <2730.11	≥2730.11	
Hypertension					
No	3669	1.0 (ref)	1.09 (0.90, 1.31)	1.70 (1.44, 2.02)	0.178
Yes	937	1.0 (ref)	1.57 (1.07, 2.31)	1.88 (1.28, 2.76)	
Diabetes					
No	2949	1.0 (ref)	1.16 (0.95, 1.42)	1.62 (1.34, 1.95)	0.384
Yes	1657	1.0 (ref)	1.22 (0.90, 1.65)	2.01 (1.52, 2.67)	
Hyperlipemia					
No	3346	1.0 (ref)	1.13 (0.94, 1.36)	1.51 (1.27, 1.80)	0.006
Yes	1260	1.0 (ref)	1.40 (0.96, 2.05)	2.77 (1.94, 3.96)	
AMI					
No	4260	1.0 (ref)	1.09 (0.92, 1.30)	1.71 (1.46, 2.01)	0.016
Yes	346	1.0 (ref)	2.63 (1.30, 5.30)	2.31 (1.14, 4.69)	
VHD					
No	4143	1.0 (ref)	1.15 (0.96, 1.38)	1.76 (1.49, 2.07)	0.602
Yes	463	1.0 (ref)	1.23 (0.76, 2.00)	1.50 (0.94, 2.41)	
PCD					
No	4314	1.0 (ref)	1.17 (0.98, 1.39)	1.72 (1.46, 2.02)	0.931
Yes	292	1.0 (ref)	1.15 (0.61, 2.19)	1.86 (1.05, 3.32)	
Atrial fibrillation					
No	2529	1.0 (ref)	1.04 (0.82, 1.31)	1.59 (1.28, 1.98)	0.437
Yes	2077	1.0 (ref)	1.29 (1.02, 1.64)	1.84 (1.47, 2.31)	
Pneumonia					
No	3256	1.0 (ref)	1.18 (0.96, 1.44)	1.89 (1.56, 2.29)	0.061
Yes	1350	1.0 (ref)	1.09 (0.82, 1.45)	1.33 (1.03, 1.74)	
COPD					
No	4361	1.0 (ref)	1.16 (0.98, 1.38)	1.72 (1.47, 2.02)	0.962
Yes	245	1.0 (ref)	1.32 (0.54, 3.20)	1.86 (0.83, 4.17)	
Liver diseases					
No	4374	1.0 (ref)	1.26 (1.06, 1.50)	1.85 (1.57, 2.18)	0.065
Yes	232	1.0 (ref)	0.62 (0.34, 1.13)	1.24 (0.70, 2.21)	

436 **Table 4.** Continued.

	N	SII			P for interaction
		<1144.28	≥1144.28, <2730.11	≥2730.11	
Renal failure					0.396
No	3486	1.0 (ref)	1.10 (0.91, 1.33)	1.72 (1.44, 2.05)	
Yes	1120	1.0 (ref)	1.39 (1.00, 1.94)	1.79 (1.30, 2.48)	
Hypothyroidism					0.628
No	4051	1.0 (ref)	1.13 (0.95, 1.35)	1.71 (1.45, 2.01)	
Yes	555	1.0 (ref)	1.46 (0.90, 2.38)	1.96 (1.23, 3.12)	
Stroke					0.618
No	4356	1.0 (ref)	1.14 (0.96, 1.36)	1.69 (1.44, 1.99)	
Yes	250	1.0 (ref)	1.45 (0.79, 2.65)	2.24 (1.26, 3.97)	
Depression					0.216
No	4247	1.0 (ref)	1.17 (0.98, 1.39)	1.79 (1.52, 2.10)	
Yes	359	1.0 (ref)	1.11 (0.55, 2.25)	1.02 (0.51, 2.03)	
Malignancy					0.879
No	4353	1.0 (ref)	1.18 (0.99, 1.40)	1.72 (1.46, 2.02)	
Yes	253	1.0 (ref)	1.02 (0.57, 1.83)	1.57 (0.94, 2.63)	
SOFA					0.172
<5	2149	1.0 (ref)	1.24 (0.91, 1.70)	2.21 (1.66, 2.96)	
≥5	2457	1.0 (ref)	1.20 (0.99, 1.46)	1.58 (1.31, 1.90)	
SAPSI					0.255
<40	2181	1.0 (ref)	1.22 (0.87, 1.71)	1.99 (1.43, 2.75)	
≥40	2425	1.0 (ref)	1.13 (0.93, 1.37)	1.42 (1.19, 1.69)	

437

438

439

440

441

442

443

444 **Table 5. The clinical characteristics in critically ill patients with CHF before and after PSM.**

Parameter	Before PSM			After PSM		
	<5533.4	≥5533.4	P value	<5533.4	≥5533.4	P value
N	3995	611		602	602	602
Demographics						
Age, years	74.4 (63.4-82.9)	76.9 (68.2-83.7)	<0.001	77.7 (66.1-84.2)	76.9 (68.1-83.7)	0.984
Male, n (%)	2154 (53.9%)	282 (46.2%)	<0.001	279 (46.3%)	279 (46.3%)	1.000
Ethnicity, n (%)		0.001	0.001			0.526
White	2879 (72.1%)	470 (76.9%)		463 (76.9%)	461 (76.6%)	
Black	309 (7.7%)	23 (3.8%)		30 (5.0%)	23 (3.8%)	
Others	807 (20.2%)	118 (19.3%)		109 (18.1%)	118 (19.6%)	
Vital signs						
HR, beats/minute	84.5 (74.1-96.0)	88.2 (77.0-99.6)	<0.001	87.5 (77.3-98.8)	87.9 (76.8-99.2)	0.840
RR, times/minute	19.3 (16.8-22.3)	20.3 (17.6-23.2)	<0.001	20.2 (17.3-23.5)	20.2 (17.6-23.1)	0.876
SBP, mmHg	113.8 (104.6-126.0)	113.8 (104.6-126.0)	0.145	113.9 (103.4-125.6)	112.1 (103.5-125.7)	0.964
DBP, mmHg	57.1 (51.1-63.9)	55.7 (50.2-62.5)	0.009	55.3 (49.1-61.9)	55.6 (50.2-62.5)	0.219
Temperature, °C	36.8 (36.4-37.2)	36.7 (36.3-37.1)	0.010	36.8 (36.4-37.2)	36.7 (36.3-37.1)	0.254
SpO ₂ , %	97.3 (95.8-98.5)	97.0 (95.5-98.4)	0.157	97.3 (95.6-98.5)	97.0 (95.5-98.4)	0.474
Weight, kg	78.4 (65.0-94.3)	74.4 (61.0-90.0)	<0.001	73.0 (61.0-88.5)	74.4 (61.0-90.0)	0.560
Therapies, n (%)						
ACEI	1117 (28.0%)	149 (24.4%)	0.065	153 (25.4%)	147 (24.4%)	0.689
ARB	158 (4.0%)	25 (4.1%)	0.872	26 (4.3%)	25 (4.2%)	0.886
β-blocker	2454 (61.4%)	373 (61.0%)	0.858	373 (62.0%)	367 (61.0%)	0.722
Digoxin	411 (10.3%)	64 (10.5%)	0.888	85 (14.1%)	63 (10.5%)	0.053
Furosemide	2766 (69.2%)	424 (69.4%)	0.937	412 (68.4%)	416 (69.1%)	0.804
Statins	1274 (31.9%)	177 (29.0%)	0.148	158 (26.2%)	174 (28.9%)	0.302
Dialysis	426 (10.7%)	52 (8.5%)	0.104	86 (14.3%)	51 (8.5%)	0.001
Vasopressor	1042 (26.1%)	192 (31.4%)	0.008	171 (28.4%)	187 (31.1%)	0.313
Ventilation	1561 (39.1%)	318 (52.0%)	<0.001	306 (50.8%)	310 (51.5%)	0.818
Assisted circulation	259 (6.5%)	23 (3.8%)	0.009	21 (3.5%)	23 (3.8%)	0.759
Scores						
SOFA	5.0 (3.0-7.0)	5.0 (3.0-7.0)	0.556	5.0 (3.0-7.0)	5.0 (3.0-7.0)	0.405
SAPSII	40.0 (32.0-49.0)	45.0 (36.0-53.5)	<0.001	44.0 (35.0-53.0)	45.0 (36.0-53.0)	0.440

445 **Table 5.** Continued.

Parameter	Before PSM			After PSM		
	<5533.4	≥5533.4	P value	<5533.4	≥5533.4	P value
N	3995	611		602	602	
Laboratory events						
Hemoglobin, g/dl	11.0 (9.7-12.4)	10.7 (9.5-12.1)	0.008	10.7 (9.5-11.9)	10.7 (9.5-12.1)	0.290
Creatinine, mg/dl	1.2 (0.9-1.8)	1.2 (0.9-2.1)	0.250	1.3 (0.9-2.0)	1.2 (0.9-2.1)	0.160
BUN, mg/dl	26.0 (18.0-42.0)	30.0 (19.0-49.0)	<0.001	31.0 (20.0-49.0)	30.0 (19.0-48.0)	0.613
Glucose, mg/dl	134.0 (114.4-163.6)	145.5 (119.7-176.8)	<0.001	141.2 (117.1-180.3)	145.5 (119.6-176.2)	0.610
Sodium, mmol/L	139.0 (136.0-141.0)	138.0 (135.0-141.0)	<0.001	138.0 (135.0-141.0)	138.0 (135.0-141.0)	0.487
Potassium, mmol/L	4.2 (3.8-4.6)	4.2 (3.7-4.7)	0.575	4.2 (3.8-4.7)	4.2 (3.7-4.7)	0.634
Chloride, mmol/L	103.0 (100.0-107.0)	102.0 (98.0-107.0)	<0.001	103.0 (99.0-106.0)	102.0 (98.0-107.0)	0.377
Bicarbonate, mmol/L	25.0 (21.0-28.0)	24.0 (20.0-27.0)	<0.001	24.0 (20.0-27.0)	24.0 (20.0-27.0)	0.878
PT, second	14.3 (13.2-16.8)	14.4 (13.2-17.1)	0.245	14.4 (13.2-17.3)	14.4 (13.2-17.2)	0.846
APTT, second	31.8 (27.3-41.1)	31.6 (27.3-38.6)	0.329	31.3 (27.3-40.2)	31.7 (27.3-38.7)	0.920
Lactate, mmol/L	1.9 (1.3-2.9)	1.8 (1.3-2.8)	0.654	1.8 (1.3-3.0)	1.8 (1.3-2.8)	0.654
Albumin, g/dL	3.0 (2.6-3.4)	2.9 (2.5-3.3)	<0.001	2.8 (2.4-3.3)	2.9 (2.5-3.3)	0.255
Bilirubin, mg/dL	1.5 (0.6-3.1)	0.9 (0.4-2.5)	<0.001	1.1 (0.5-2.4)	0.9 (0.4-2.6)	0.282
ALT, IU/L	62.0 (22.0-309.0)	50.0 (21.0-242.7)	0.034	51.0 (21.0-225.8)	50.0 (21.0-248.5)	0.637
NT-proBNP, ng/ml	10.9 (4.6-18.6)	12.1 (5.1-19.8)	0.019			
cTnT, ng/mL	1.4 (0.1-2.9)	1.1 (0.1-2.5)	0.016	1.1 (0.1-2.8)	1.1 (0.1-2.5)	0.768
CI, L/min/m ²	2.8 (2.1-3.5)	2.8 (2.2-3.5)	0.309	2.8 (2.1-3.4)	2.8 (2.2-3.5)	0.938
Urine output, L	1.6 (0.9-2.5)	1.4 (0.8-2.1)	<0.001	1.4 (0.7-2.2)	1.4 (0.8-2.1)	0.522
Hospitalization type			0.002			0.238
Emergency, n (%)	3498 (87.6%)	564 (92.3%)		538 (89.4%)	555 (92.2%)	
Elective, n (%)	338 (8.5%)	29 (4.7%)		39 (6.5%)	29 (4.8%)	
First ICU admission			<0.001			0.004
CCU, n (%)	1098 (27.5%)	138 (22.6%)		143 (23.8%)	138 (22.9%)	
Length of ICU stay, h	93.0 (50.0-184.0)	109.0 (54.0-204.0)	0.003	118.5 (59.0-228.8)	109.0 (53.0-201.8)	0.128
Comorbidities, n (%)						
Hypertension	830 (20.8%)	107 (17.5%)	0.062	126 (20.9%)	106 (17.6%)	0.144
Hyperlipemia	1120 (28.0%)	140 (22.9%)	0.008	133 (22.1%)	138 (22.9%)	0.730
Diabetes mellitus	1449 (36.3%)	208 (34.0%)	0.285	205 (34.1%)	205 (34.1%)	1.000

446 **Table 5.** Continued.

Parameter	Before PSM			After PSM		
	<5533.4	≥5533.4	P value	<5533.4	≥5533.4	P value
N	3995	611		602	602	
Comorbidities, n (%)						
Atrial fibrillation	1783 (44.6%)	294 (48.1%)	0.107	281 (46.7%)	290 (48.2%)	0.603
AMI	301 (7.5%)	45 (7.4%)	0.882	39 (6.5%)	44 (7.3%)	0.570
VHD	402 (10.1%)	61 (10.0%)	0.952	88 (14.6%)	61 (10.1%)	0.018
Peripheral vascular	511 (12.8%)	66 (10.8%)	0.167	88 (14.6%)	64 (10.6%)	0.037
Pulmonary circulation	239 (6.0%)	53 (8.7%)	0.011	45 (7.5%)	52 (8.6%)	0.459
Pneumonia	1108 (27.7%)	242 (39.6%)	<0.001	235 (39.0%)	237 (39.4%)	0.906
COPD	188 (4.7%)	57 (9.3%)	<0.001	48 (8.0%)	53 (8.8%)	0.603
Liver diseases	214 (5.4%)	18 (2.9%)	0.011	20 (3.3%)	18 (3.0%)	0.742
Renal failure	982 (24.6%)	138 (22.6%)	0.284	162 (26.9%)	136 (22.6%)	0.083
Stroke	227 (5.7%)	23 (3.8%)	0.051	38 (6.3%)	23 (3.8%)	0.052
Hypothyroidism	461 (11.5%)	94 (15.4%)	0.007	97 (16.1%)	92 (15.3%)	0.692
Malignancy	209 (5.2%)	44 (7.2%)	0.047	31 (5.1%)	43 (7.1%)	0.150
Depression	303 (7.6%)	56 (9.2%)	0.175	50 (8.3%)	56 (9.3%)	0.542
30-day mortality	769 (19.2%)	204 (33.4%)	<0.001	150 (24.9%)	200 (33.2%)	0.002
90-day mortality	1120 (28.0%)	260 (42.6%)	<0.001	211 (35.0%)	253 (42.0%)	0.013
Hospital-day mortality	659 (16.5%)	172 (28.2%)	<0.001	135 (22.4%)	167 (27.7%)	0.033

447

448

449

450

451

452

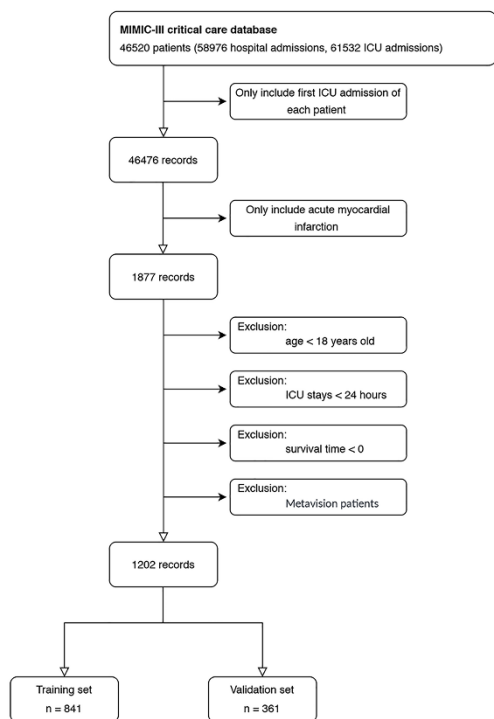
453

454

455

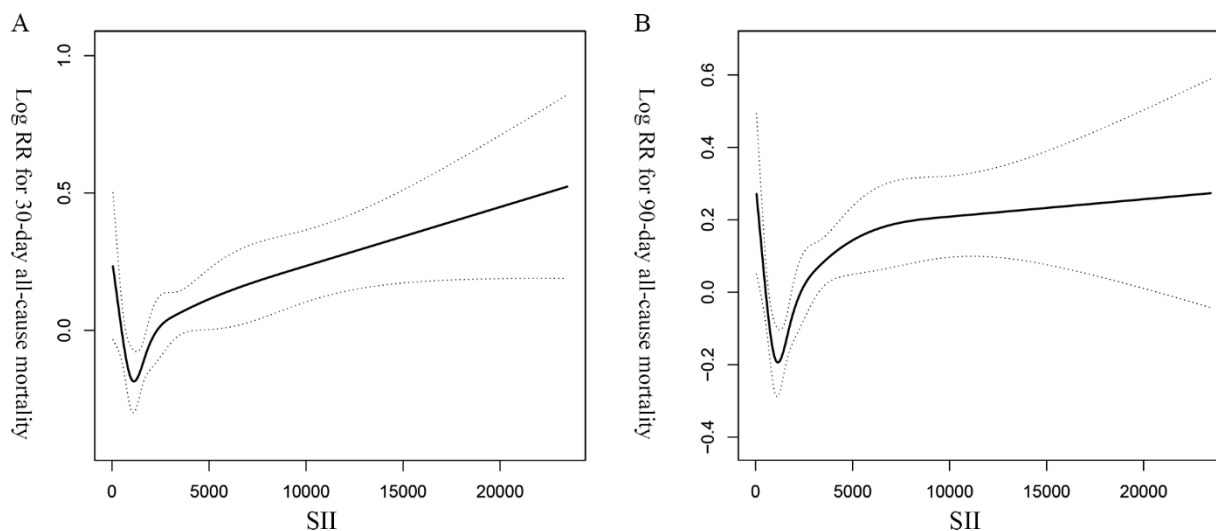
456

457 **Figure 1.** Workflow for screening study subjects. ICU, intensive care unit.



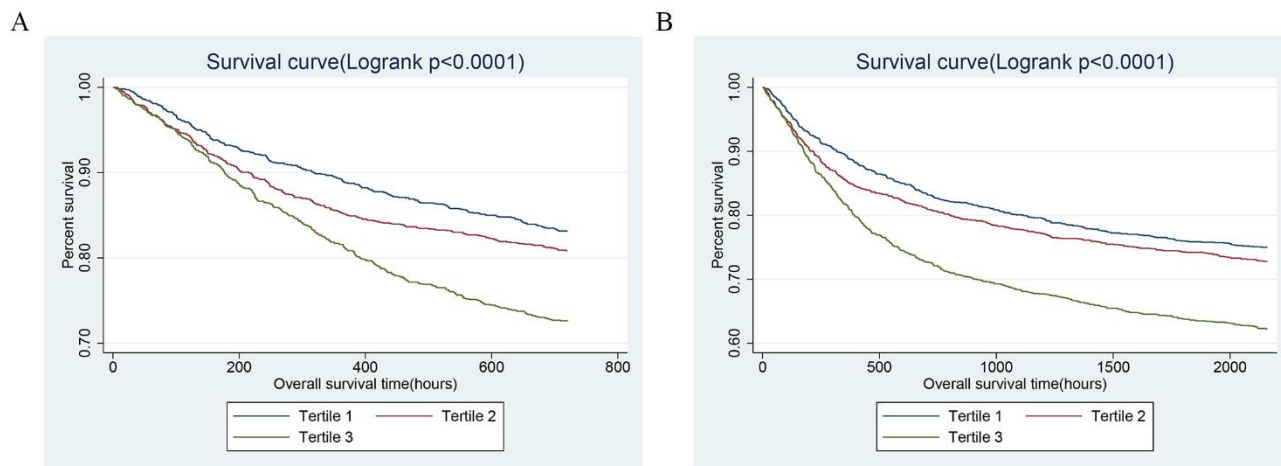
458

459 **Figure 2.** The non-linear curve fitting of the association between SII and 30- (A) and 90- (B) day all-
460 cause mortalities in critically ill patients with CHF after adjusting for age, gender, race, and other
461 potential variables. SII, systemic immune-inflammation index. CHF, congestive heart failure.



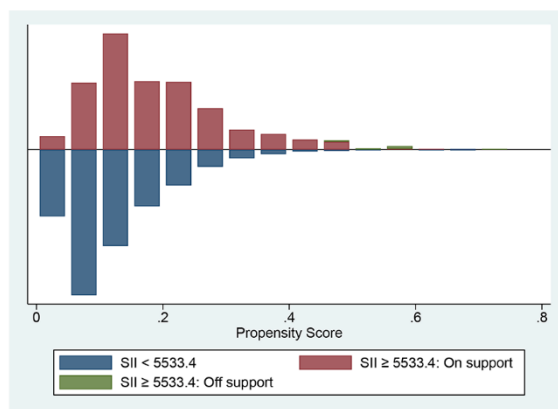
462

463 **Figure 3.** Kaplan-Meier survival curves showing the 30- (A) and 90- (B) day all-cause mortalities
464 stratified by SII tertile in critically ill patients with CHF. SII, systemic immune-inflammation index.
465 CHF, congestive heart failure.



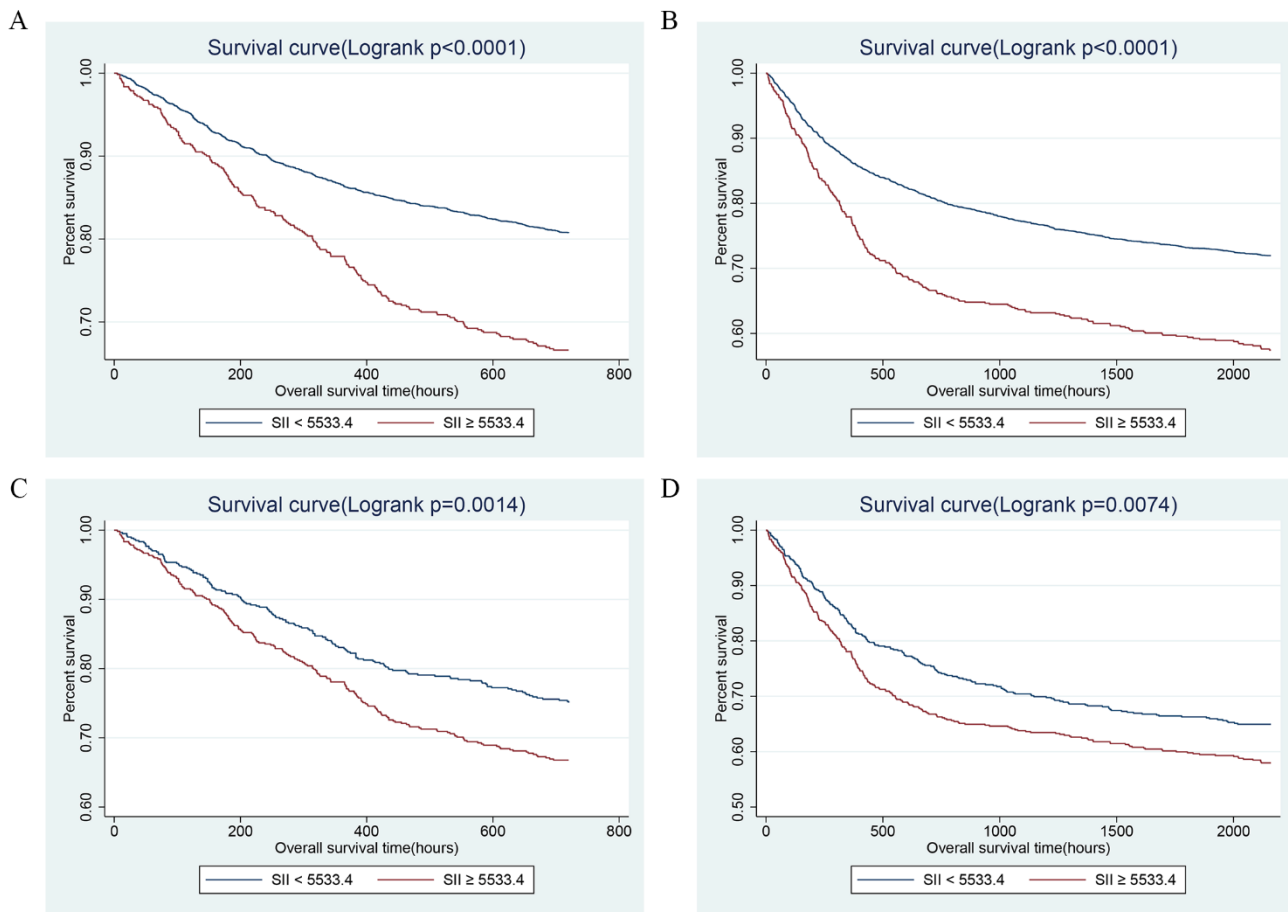
466

467 **Figure 4.** The bar chart presenting the range of propensity scores and the corresponding number of
468 matches in high (red) and low (blue) SII groups. SII, systemic immune-inflammation index.



469

470 **Figure 5.** Kaplan-Meier survival curves showing the 30- (A) and 90- (B) day all-cause mortalities
471 stratified by cut-off value of SII in critically ill patients with CHF before PSM. C and D presented the
472 correlation between SII and 30- and 90-day mortalities after PSM, separately. SII, systemic immune-
473 inflammation index. CHF, congestive heart failure. PSM, propensity score matching.



474

475 **Figure 6.** The forest plot showing the univariate (A) and multivariate (B) Cox regression for effects
476 of SII on short-term mortality in the critically ill patients with CHF before and after PSM. SII,
477 systemic immune-inflammation index. CHF, congestive heart failure. PSM, propensity score
478 matching.

