

1 **Impact of the World Inflammatory Bowel Disease Day and Crohn's & Colitis Awareness**

2 **Week on Population Interest between 2016 and 2020: Google Trends Analysis**

3

4 **Krixie Silangcruz, MD, MBA¹, Yoshito Nishimura, MD, PhD, MPH^{1,2*}, Torrey Czech,**

5 **MD¹, Nobuhiko Kimura, MD¹, Hideharu Hagiya, MD, PhD², Toshihiro Koyama, PhD³,**

6 **Fumio Otsuka, MD, PhD²**

7

8 ¹Department of Medicine, John A. Burns School of Medicine, University of Hawai'i,

9 Honolulu, HI, 96813, USA

10 ²Department of General Medicine, Okayama University Graduate School of Medicine,

11 Dentistry and Pharmaceutical Sciences, Okayama, 7008558, Japan

12 ³Department of Health Data Science, Graduate School of Medicine, Dentistry, and

13 Pharmaceutical Sciences, Okayama University, Okayama, 7008530, Japan

14

15 **Conflicts of interest**

16 The authors declare no conflicts of interest in association with the present study.

17

18 **Funding**

19 None

20

21 **Summary**

22 World IBD Day and Crohn's and Colitis Awareness Week are key health observances related
23 to IBD. These observances, however, might not have been effective in raising public
24 awareness of IBD in the US and worldwide, according to Google Trends analysis.

25

26 ***Corresponding author:** Yoshito Nishimura, MD, PhD, MPH

27 Department of Medicine, John A. Burns School of Medicine, University of Hawai'i, Honolulu,
28 HI, 96813, USA

29 E-mail: nishimura-yoshito@okayama-u.ac.jp

30

31

32

33

34

35

36

37

38

39 **Abstract**

40 **Background:** More than 6 million people are affected by inflammatory bowel disease (IBD)
41 globally. World IBD Day (WID; May 19) and Crohn’s and Colitis Awareness Week (CCAW;
42 December 1–7) occur yearly as national health observances to raise public awareness of IBD,
43 but their effects are unclear.

44 **Methods:** This study evaluates the impact of WID and CCAW on the public awareness of
45 IBD in the United States (US) and worldwide from 2016 to 2020 using the relative search
46 volume (RSV) of “IBD,” “Ulcerative colitis,” and “Crohn’s disease” in Google Trends (GT).
47 To identify significant timepoints of trend changes (joinpoints), we performed Joinpoint
48 regression analysis.

49 **Results:** No joinpoints were noted around the time of WID or CCAW during the study period
50 in the search results of the US. Worldwide, joinpoints were noted around WID in 2020 with
51 the search for “IBD” and around CAAW in 2017 and 2019 to search for “ulcerative colitis.”
52 However, the extents of trend changes were modest without statistically significant increases.

53 **Conclusions:** WID and CCAD may not have worked as expected to raise public awareness of
54 IBD. Additional measures are necessary to help raise awareness of IBD related to the health
55 observances.

56

57 **Keywords:** inflammatory bowel disease; ulcerative colitis; Crohn’s disease; google trends;
58 trend analysis

59

60 **Introduction**

61 Inflammatory bowel disease (IBD) is a global disease with an increasing prevalence
62 in newly industrialized countries and rising cases documented in every continent¹. Recent
63 systematic reviews have demonstrated that IBD is occurring at increasing rates in such
64 countries². Globally in 2017, there were 6.8 million cases of IBD with an increased
65 age-standardized prevalence rate from 1990 to 2017². Within the United States, it was
66 estimated that more than a million adult Americans had IBD^{3,4}.

67 Research into Inflammatory bowel disease, however, is largely under-represented
68 despite its prevalence due to a multifactorial nature of the disease⁵. Global efforts have been
69 made to raise awareness for IBD. In 2010, World IBD Day (WID) was created by the
70 European Federation of Crohn’s and Ulcerative Colitis Associations and patient organizations
71 to increase IBD awareness and provide education about IBD to the public^{6,7}. Similarly,
72 Crohn’s and Colitis Awareness Week (CCAW) was created by an US Senate resolution in
73 2011, with goals of encouraging all people in the US to engage in activities aimed at raising
74 awareness of IBD among the general public⁸.

75 Disease awareness and health promotion campaigns are created to increase public
76 health education, awareness and, ultimately, change behavior⁹. Approximately 200 health
77 awareness days, weeks, or months are on the US National Health Observances calendar¹⁰,
78 and nearly 70% have been introduced after 2005. Despite the increasing number of awareness
79 initiatives, there is a lack of data regarding evidence of their effectiveness and impact¹¹. This
80 lack of data highlights the need for greater evaluation and quantifiable metrics to determine
81 the impact of health behaviors on a global scale.

82 Because online searches are a predominant source of access to
83 health-awareness-related information, internet searches are a reflection of engagement
84 between the public and resources which increase disease awareness. Searches are individual
85 proxies for public disease awareness and provide insight into the effect of dissemination of
86 information via global public health days and weeks. Google Trends (GT) is a novel,
87 open-source, freely accessible resource that allows researchers to interact with search tools to
88 study health phenomena¹². An analysis regarding the efficacy and public health behaviors
89 which resulted from IBD awareness initiatives has not been done previously. We aim to
90 analyze the relationship between the WID or CCAW, and public health awareness for IBD
91 through GT data.

92

93 **Methods**

94 **Data source**

95 GT is a data source generated from the total Google search data¹³. The data are available to
96 the public, and GT has been used in multiple social, public health, or global health research to
97 dig into the public attention¹⁴⁻²⁵. Surrogate of the public attention in GT is the relative
98 popularity of specific search terms or topics in a certain category (for example, “health”),
99 place, and time range. The relative popularity is defined as a relative search volume (RSV)
100 with a scale of 0–100 (0 being the lowest popularity)^{14, 19-21}. The RSV correlates with how
101 popular the terms are at a certain time point.

102

103 **Search Input**

104 **Fig. 1** is a summary of our search strategy with GT. We followed protocols noted by previous
105 studies^{17, 19, 21}. We chose [Inflammatory bowel disease], [Ulcerative colitis], and [Crohn’s
106 disease] as search inputs. The location of the search included “United States” and
107 “Worldwide.”

108

109 **Search Variables**

110 To specifically obtain the popularity of the disease-related search inputs, all searches were
111 done with a ‘disease’ option in a Health category (with a “disease” option, search volumes of
112 subtopics or relevant themes are included). We chose each full year from 2016 to 2020 as

113 search scales to visualize weekly trends of the RSVs (each year contains 52 or 53 weeks; the
114 WID occurred in the 20th week of 2016 to 2019, and the 19th week of 2020; CCAD occurred
115 in the 48th to 49th week in 2016 to 2019 and the 49th to 50th week in 2020).

116

117 **Statistical analyses**

118 We used a joinpoint regression model with the Joinpoint Regression Program (version 4.9.0.0,
119 March 2021, Statistical Research and Applications Branch, National Cancer Institute, USA)²⁶
120 to analyze the RSV data and their time trend. The software enables us to identify time points
121 called joinpoints, where a temporal trend significantly changes. We defined the analysis
122 criteria to look for up to three joinpoints. The weekly percent changes (WPCs) between
123 trend-change points were determined with 95% confidence intervals (CI). The threshold for
124 statistical significance was defined as a p -value < 0.05 , suggesting the level at which the
125 slope differed from zero.

126

127 **Ethical Considerations**

128 The publicly available data published by GT (Google LLC, Mountain View CA, USA) are
129 utilized in the project. The study was approved by the institutional review board of Okayama
130 University Hospital with a waiver for informed consent since the study intended to
131 retrospectively analyze open data (No. 1910-009). All research methods were performed in

132 accordance with relevant guidelines and regulations.

133

134 **Results**

135 **Trends in the search volume of “Inflammatory bowel disease”**

136 **Table 1** and **Figure 2** describe trends and trend changes of the weekly RSVs for
137 “Inflammatory bowel disease” in each full year from 2016 to 2020. With respect to the search
138 results in the US, no joinpoints were observed throughout the period. Regarding the search
139 results worldwide, there was a joinpoint at the 45th week in 2019 before which a significant
140 increase in the WPC of 0.2% (95% CI; 0.1–0.4) was observed. In 2020, a joinpoint was noted
141 at the 17th week (3 weeks before WID), after which there was a significant weekly increase in
142 the RSV by 0.3% ($p < 0.001$). Also, the third joinpoint was observed in the 48th week (a week
143 prior to CCAD). However, no joinpoints were noted from 2015 to 2018 around the time of
144 WID or CCAW.

145

146 **Trends in the search volume of “Ulcerative colitis”**

147 **Table 2** and **Figure 3** describe trends and trend changes of the weekly RSVs for “Ulcerative
148 colitis” in the designated period. In the search results of the US and worldwide, a big surge
149 was observed at the 3rd week in 2016. In 2020, a joinpoint was noted at the 16th week (4
150 weeks before WID), after which a non-statistically significant but considerable weekly RSV

151 increase by 3.7% ($p < 0.001$) was observed until 24th week. For worldwide results, there was
152 a prominent joinpoint in the 49th week (CCAW) in 2017. No other joinpoints were observed
153 around the time of WID or CCAW in 2016 or 2018 to 2020.

154

155 **Trends in the search volume of “Crohn’s disease”**

156 **Table 3** and **Figure 4** describe trends and trend changes of the weekly RSVs for “Crohn’s
157 disease” in the designated period. Between 2017 and 2019, there was no remarkable trend
158 change in both the US and worldwide. In 2020, joinpoints on the 8th week, the 16th week, and
159 the 24th week in the US. For worldwide, joinpoints were observed on the 10th week, the 14th
160 week, and the 24th week. However, there were no joinpoints around the time of WID or
161 CCAW throughout the period.

162

163 **Discussion**

164 This study evaluated how the global campaign for promoting IBD, such as WIB and
165 CCAW, affected public awareness using the RSVs of GT data as a surrogate. Although there
166 were several significant joinpoints for IBD, Crohn’s disease, and ulcerative colitis, overall,
167 the present results showed that WID and CCAW might not have significant impact on the
168 public interest in the US and worldwide. Rather, the public interest seems to have been
169 affected by timely topics. For example, at the 3rd week of 2016 when there was a significant

170 increase in the RSV of ulcerative colitis in the US, a famous US singer-songwriter reportedly
171 passed away due to the disease. In March 2020, when significant trend changes were
172 observed in the US and worldwide, a well-known American comedian revealed that he had
173 had Crohn's disease. Similarly, when the same comedian was featured in a film about a man
174 who has Crohn's disease in June 2020, there were trend changes both in the US and
175 worldwide (the 24th week). Only in 2017 worldwide, considerable trend changes in the RSVs
176 for ulcerative colitis was noted around CAAW, although the WPC was not statistically
177 significant. Given the rapid increase in the global prevalence of IBD with increasing
178 healthcare costs, raising public awareness of IBD is a pressing global health issue. While one
179 would think that people may be more aware of IBD given the rising number of IBD cases
180 worldwide, more efforts are needed in this aspect.

181 Since 2020, the dramatic challenges of the coronavirus disease 2019 (COVID-19)
182 pandemic greatly affected our lives, which may have affected the public interests for IBD as
183 well. Because immunocompromised patients may be vulnerable to COVID-19, there were
184 concerns whether IBD patients might be more susceptible to COVID-19 and have worse
185 outcomes²⁷. In a cross-sectional questionnaire, patients with IBD were apprehensive about the
186 COVID-19 pandemic, as they felt more vulnerable to COVID-19 due to their condition and
187 their immunosuppressive therapies including biologics. Many patients also felt disturbed, tense
188 when thinking of the infection, and depressed²⁸. To provide solid supports for IBD patients

189 during the pandemic, further efforts to increase the public awareness toward the entity is
190 crucial.

191 The IBD landscape is constantly evolving with the hope as more therapies are
192 discovered, it makes global awareness campaigns even critical. It is crucial to address the
193 essential priorities regarding IBD awareness. There are various ways that campaign organizers
194 can utilize to build awareness and deepen engagement amongst the target audience, not only
195 the general public but also people with IBD, their families, friends, employers, and healthcare
196 providers. Any topic related to treatment always provides positive discussion points and
197 direction to campaign programs. Activities during WID and CCAW and information about
198 the organization itself should be the go-to resource for anything related to IBD. One example
199 of a successful public health awareness campaigns include the annual breast cancer
200 awareness campaign²⁹. In order to make public health campaigns more successful,
201 appropriate identification of targets, early involvement of key stakeholders such as celebrities
202 with IBD, and enabling participants to feel part of the campaign using smartphone
203 applications or eHealth platforms may be effective³⁰. We encourage societies or organizations
204 associated with WID or CCAW to take actions with features above in mind to improve the
205 effectiveness of these campaigns.

206 The study's strength includes that this is the first study to show the public awareness
207 of IBD in the US and worldwide using the GT database. Using the open data, we could

208 quantify the current trends of general awareness in IBD. However, several limitations need to
209 be addressed. First, due to the nature of GT, the present results only included results from
210 those who had internet access and sought health-related information via Google search.
211 Given high internet penetration rates, approximately 90.4% in Northern America and 60.1%
212 worldwide³¹, and high US google search market share, approximately 83%³², GT is
213 considered a good surrogate of public awareness. Second, GT lacks full transparency and
214 reproducibility because non-public mathematical assumptions define RSVs. We documented
215 our search strategy in detail to address the limitation. Despite these limitations, our approach
216 is interestingly novel to demonstrate campaign effectiveness or ineffectiveness in public
217 awareness of IBD.

218 In conclusion, our study suggested that WIB and CCAW might have not been
219 successful to improve public awareness toward IBD using the GT data as a surrogate. There
220 is a need to look deeper into the issues surrounding IBD and how to improve public
221 awareness using these health observances based on good examples including the annual
222 breast cancer awareness campaign.

223

224 **Acknowledgments**

225 None.

226

227 **Author Contributions**

228 KS, TC, and NK wrote the manuscript. YN proposed the study concept, designed the study,
229 wrote the manuscript, and analyzed the data. HH and TK revised the manuscript critically. FO
230 supervised the research.

231

232

233

234

235

236

237

238

239

240

241

242

243

244

245

246 **References**

- 247 1 Kaplan GG. The global burden of IBD: from 2015 to 2025. *Nat Rev Gastroenterol*
248 *Hepatol.* 2015;12(12):720-727.
- 249 2 Collaborators GBDIBD. The global, regional, and national burden of inflammatory
250 bowel disease in 195 countries and territories, 1990-2017: a systematic analysis for the
251 Global Burden of Disease Study 2017. *Lancet Gastroenterol Hepatol.* 2020;5(1):17-30.
- 252 3 Ye Y, Manne S, Bennett D. Prevalence of Inflammatory Bowel Disease in the U.S.
253 Adult Population: Recent Estimates from Large Population-Based National Databases: 654.
254 *Official journal of the American College of Gastroenterology / ACG.* 2018;113:S373-S374.
- 255 4 Xu F, Carlson SA, Liu Y, Greenlund KJ. Prevalence of Inflammatory Bowel Disease
256 Among Medicare Fee-For-Service Beneficiaries - United States, 2001-2018. *MMWR Morb*
257 *Mortal Wkly Rep.* 2021;70(19):698-701.
- 258 5 Ananthakrishnan AN, Bernstein CN, Iliopoulos D, et al. Environmental triggers in
259 IBD: a review of progress and evidence. *Nat Rev Gastroenterol Hepatol.* 2018;15(1):39-49.
- 260 6 Announcement: World IBD Day - May 19, 2017. *MMWR Morb Mortal Wkly Rep.*
261 2017;66(19):516.
- 262 7 Crohns & Colitis Foundation. Take Action for World IBD Day! , Vol. 2021, 2021
- 263 8 The United States Congress. S. RES. 199 Supporting the goals and ideals of
264 “Crohn’s and Colitis Awareness Week”. Vol. 2021, 2011

- 265 9 Purtle J, Roman LA. Health awareness days: sufficient evidence to support the
266 craze? *Am J Public Health*. 2015;105(6):1061-1065.
- 267 10 U.S. Department of Health and Human Services. National Health Observances. Vol.
268 2021, 2021
- 269 11 Wakefield MA, Loken B, Hornik RC. Use of mass media campaigns to change
270 health behaviour. *Lancet*. 2010;376(9748):1261-1271.
- 271 12 Nuti SV, Wayda B, Ranasinghe I, et al. The use of google trends in health care
272 research: a systematic review. *PLoS One*. 2014;9(10):e109583.
- 273 13 LLC G. Google Trends. Vol. 2021, 2021
- 274 14 Motosko C, Zakhem G, Ho R, Saadeh P, Hazen A. Using Google to Trend Patient
275 Interest in Botulinum Toxin and Hyaluronic Acid Fillers. *J Drugs Dermatol*.
276 2018;17(11):1245-1246.
- 277 15 Frauenfeld L, Nann D, Sulyok Z, Feng YS, Sulyok M. Forecasting tuberculosis
278 using diabetes-related google trends data. *Pathog Glob Health*. 2020;114(5):236-241.
- 279 16 Patel JC, Khurana P, Sharma YK, Kumar B, Ragumani S. Chronic lifestyle diseases
280 display seasonal sensitive comorbid trend in human population evidence from Google Trends.
281 *PLoS One*. 2018;13(12):e0207359.
- 282 17 Tabuchi T, Fukui K, Gallus S. Tobacco Price Increases and Population Interest in
283 Smoking Cessation in Japan Between 2004 and 2016: A Google Trends Analysis. *Nicotine*

284 *Tob Res.* 2019;21(4):475-480.

285 18 Cacciamani GE, Bassi S, Sebben M, et al. Consulting "Dr. Google" for Prostate
286 Cancer Treatment Options: A Contemporary Worldwide Trend Analysis. *Eur Urol Oncol.*
287 2020;3(4):481-488.

288 19 Havelka EM, Mallen CD, Shepherd TA. Using Google Trends to assess the impact
289 of global public health days on online health information seeking behaviour in Central and
290 South America. *J Glob Health.* 2020;10(1):010403.

291 20 Patel JC, Khurana P, Sharma YK, Kumar B, Sugadev R. Google trend analysis of
292 climatic zone based Indian severe seasonal sensitive population. *BMC Public Health.*
293 2020;20(1):306.

294 21 Peng Y, Li C, Rong Y, Chen X, Chen H. Retrospective analysis of the accuracy of
295 predicting the alert level of COVID-19 in 202 countries using Google Trends and machine
296 learning. *J Glob Health.* 2020;10(2):020511.

297 22 Russo GI, di Mauro M, Cocci A, et al. Consulting "Dr Google" for sexual
298 dysfunction: a contemporary worldwide trend analysis. *Int J Impot Res.* 2020;32(4):455-461.

299 23 Sharma M, Sharma S. The Rising Number of COVID-19 Cases Reflecting Growing
300 Search Trend and Concern of People: A Google Trend Analysis of Eight Major Countries. *J*
301 *Med Syst.* 2020;44(7):117.

302 24 Brodeur A, Clark AE, Fleche S, Powdthavee N. COVID-19, lockdowns and

- 303 well-being: Evidence from Google Trends. *J Public Econ.* 2021;193:104346.
- 304 25 Zitting KM, Lammers-van der Holst HM, Yuan RK, Wang W, Quan SF, Duffy JF.
- 305 Google Trends reveals increases in internet searches for insomnia during the 2019
- 306 coronavirus disease (COVID-19) global pandemic. *J Clin Sleep Med.* 2021;17(2):177-184.
- 307 26 National Cancer Institute. Joinpoint Trend Analysis Software. Vol. 2021, 2021
- 308 27 Nakase H, Matsumoto T, Matsuura M, et al. Expert Opinions on the Current
- 309 Therapeutic Management of Inflammatory Bowel Disease during the COVID-19 Pandemic:
- 310 Japan IBD COVID-19 Taskforce, Intractable Diseases, the Health and Labor Sciences
- 311 Research. *Digestion.* 2020.
- 312 28 Zingone F, Siniscalchi M, Savarino EV, et al. Perception of the COVID-19 Pandemic
- 313 Among Patients With Inflammatory Bowel Disease in the Time of Telemedicine:
- 314 Cross-Sectional Questionnaire Study. *J Med Internet Res.* 2020;22(11):e19574.
- 315 29 Glynn RW, Kelly JC, Coffey N, Sweeney KJ, Kerin MJ. The effect of breast cancer
- 316 awareness month on internet search activity - a comparison with awareness campaigns for
- 317 lung and prostate cancer. *BMC Cancer.* 2011;11(1):442.
- 318 30 Seymour J. The Impact of Public Health Awareness Campaigns on the Awareness
- 319 and Quality of Palliative Care. *Journal of Palliative Medicine.* 2018;21(S1):S-30-S-36.
- 320 31 Statista. Global internet penetration rate as of April 2021, by region. Vol. 2021, 2021
- 321 32 Statista. Google: search engine market share in selected countries 2021. Vol. 2021,

322 2021

323

324 **Table 1. Trend changes in relative search volumes of “Inflammatory bowel disease”, 2016–2020**

Country/Year	Period 1		Period 2		Period 3		Period 4	
	Weeks	WPC (%) [95% CI]	Weeks	WPC (%) [95% CI]	Weeks	WPC (%) [95% CI]	Weeks	WPC (%) [95% CI]
US/2016	1–52	–0.1 [–0.4, 0.2]						
US/2017	1–53	–0.2 [–0.5, 0.1]						
US/2018	1–52	–0.2 [–0.5, 0.2]						
US/2019	1–52	–0.3* [–0.6, 0]						
US/2020	1–52	0.1 [–0.2, 0.4]						
Worldwide/2016	1–52	0 [–0.2, 0.2]						
Worldwide/2017	1–53	0 [–0.2, 0.1]						
Worldwide/2018	1–52	0 [–0.2, 0.2]						
Worldwide/2019	1–45	0.2* [0.1, 0.4]	45–52	–2.6 [–5.4, 0.3]				
Worldwide/2020	1–13	–2.5* [–3.6, –1.4]	13–17	4.6 [–4.9, 15]	17–48	0.3* [0, 0.6]	48–52	–5.4 [–10.9, 0.5]

325 * Significantly different from zero (p < 0.05)

326 Abbreviations: WPC, weekly percentage change, CI; confidence interval

327 Periods were separated as Period 1–4, when the trend changes were statistically detected in the Joinpoint regression analysis during the study period.

328

329 **Table 2. Trend changes in relative search volumes of “Ulcerative colitis”, 2016–2020**

Country/Year	Period 1		Period 2		Period 3	
	Weeks	WPC (%) [95% CI]	Weeks	WPC (%) [95% CI]	Weeks	WPC (%) [95% CI]
US/2016	1–3	80.2* [40.1, 131.8]	3–6	-19.5 [-37.4, 3.6]	6–52	-0.2* [-0.4, 0]
US/2017	1–53	0.2 [0, 0.4]				
US/2018	1–52	0.1 [-0.1, 0.3]				
US/2019	1–52	-0.3* [-0.4, -0.1]				
US/2020	1–16	-2.8* [-4.0, -1.6]	16–24	3.7 [-0.3, 7.8]	24–52	-0.5 [-0.9, 0]
Worldwide/2016	1–52	-0.3* [-0.6, -0.1]				
Worldwide/2017	1–46	0.1 [0, 0.2]	46–49	5.7 [-6.5, 19.6]	49–53	-7.9* [-11.5, -4.3]
Worldwide/2018	1–52	0 [-0.1, 0.1]				
Worldwide/2019	1–46	0 [-0.1, 0.1]	46–52	-2.1 [-4.5, 0.3]		
Worldwide/2020	1–52	0 [-0.4, 0.3]				

330 * Significantly different from zero (p < 0.05)

331 Abbreviations: WPC, weekly percentage change, CI; confidence interval

332 Periods were separated as Period 1–4, when the trend changes were statistically detected in the Joinpoint regression analysis during the study period.

333

334 **Table 3. Trend changes in relative search volumes of “Crohn’s disease”, 2016–2020**

Country/Year	Period 1		Period 2		Period 3		Period 4	
	Weeks	WPC (%) [95% CI]	Weeks	WPC (%) [95% CI]	Weeks	WPC (%) [95% CI]	Weeks	WPC (%) [95% CI]
US/2016	1–52	0.1 [–0.1, 0.3]						
US/2017	1–53	0.1 [–0.1, 0.2]						
US/2018	1–52	0.1 [–0.2, 0.4]						
US/2019	1–39	0 [–0.3, 0.2]	39–52	–1.5* [–2.8, –0.3]				
US/2020	1–8	2.3 [–0.4, 5.1]	8–16	–4.5* [–7.0, –1.9]	16–24	2.9* [0.2, 5.7]	24–52	0.1 [–0.3, 0.4]
Worldwide/2016	1–52	0 [–0.1, 0.1]						
Worldwide/2017	1–53	0 [–0.1, 0.1]						
Worldwide/2018	1–52	–0.1 [–0.3, 0.1]						
Worldwide/2019	1–52	–0.2 [–0.3, –0.1]						
Worldwide/2020	1–10	2.2* [0.6, 3.8]	10–14	–8.7* [–16.4, –0.4]	14–24	1.2 [–0.4, 2.8]	24–52	–0.2 [–0.5, 0.1]

335 * Significantly different from zero (p <0.05)

336 Abbreviations: WPC, weekly percentage change, CI; confidence interval

337 Periods were separated as Period 1–4, when the trend changes were statistically detected in the Joinpoint regression analysis during the study period.

338 **Figure legends**

339 **Figure 1. Searching flow using Google Trends**

340

341 **Figure 2. Trends in the relative search volume of “Inflammatory bowel disease,”**

342 **2016–2020**

343 Weekly relative search volumes (RSVs) for the search term “Inflammatory bowel disease”

344 are described. World IBD Day (WID) occurred in the 20th week of 2016 to 2019 and the 19th

345 week of 2020; Crohn’s & Colitis Awareness Week (CCAW) occurred in the 48th to 49th week

346 in 2016 to 2019 and the 49th to 50th week in 2020). The number of slopes is determined by

347 the number of joinpoints identified by the analysis. Joinpoints are the time points when

348 statistically significant changes in the linear slopes are noted.

349

350 **Figure 3. Trends in the relative search volume of “Ulcerative colitis,” 2016–2020**

351 Weekly RSVs for the search term “Ulcerative colitis.” Except for the 16th week (4 weeks

352 before WID) in the US and the 49th week (CCAW) worldwide in 2020, no other joinpoints

353 were noted around the time of WID or CCAW during the designated period.

354

355 **Figure 4. Trends in the relative search volume of “Crohn’s disease,” 2016–2020**

356 Weekly RSVs for the search term “Crohn’s disease.” No joinpoints were noted around the

357 time of WID or CCAW throughout the period.

Figure 1

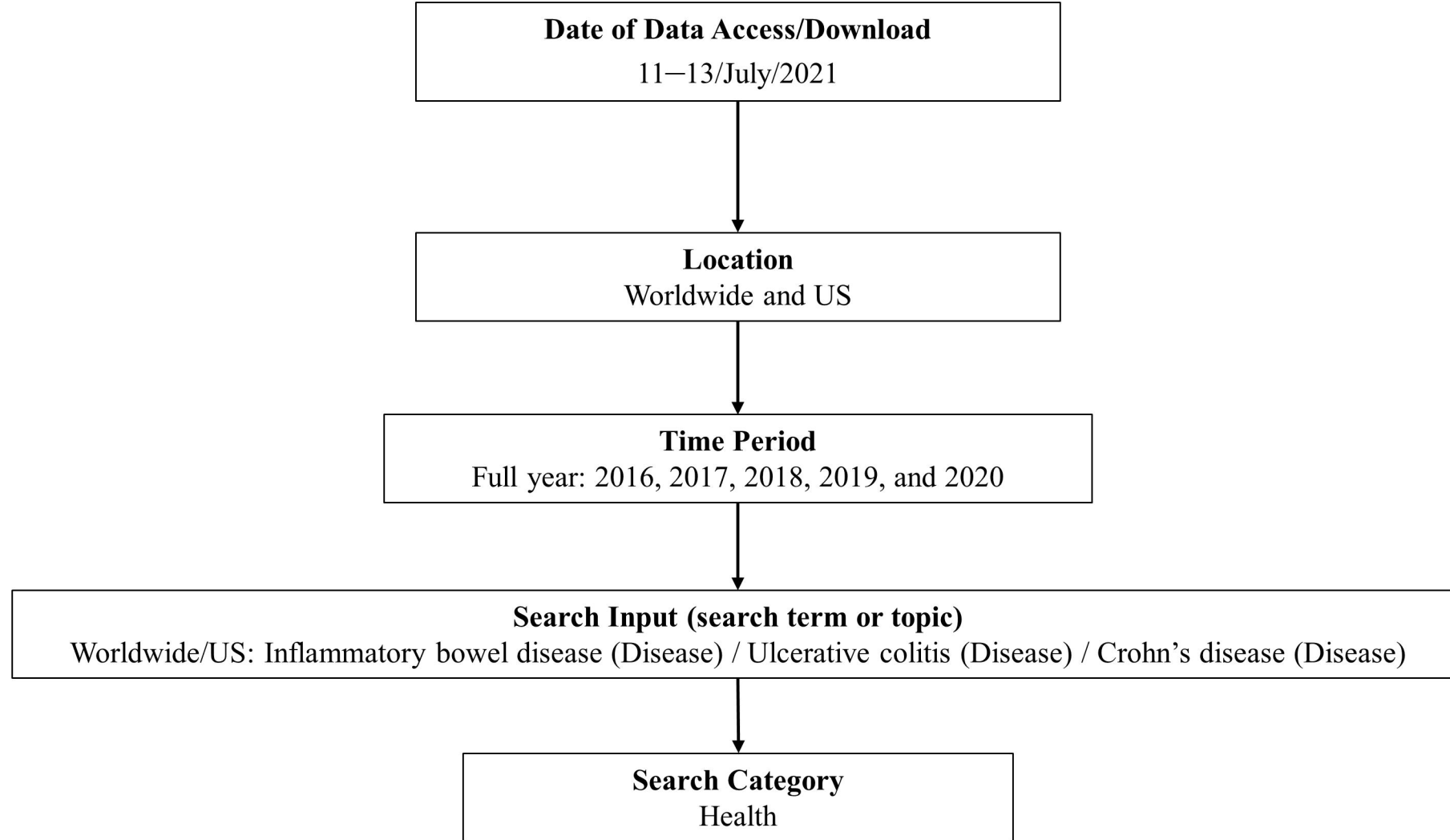


Figure 2

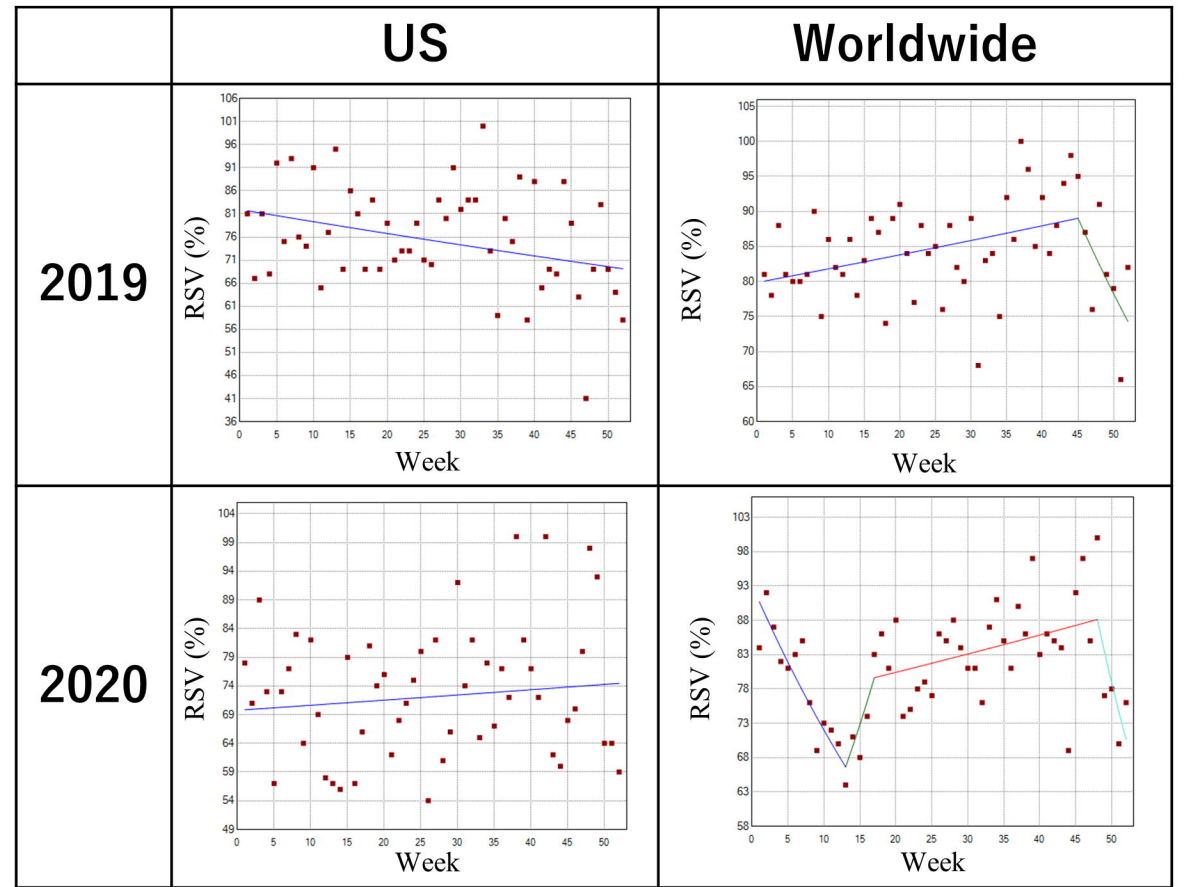
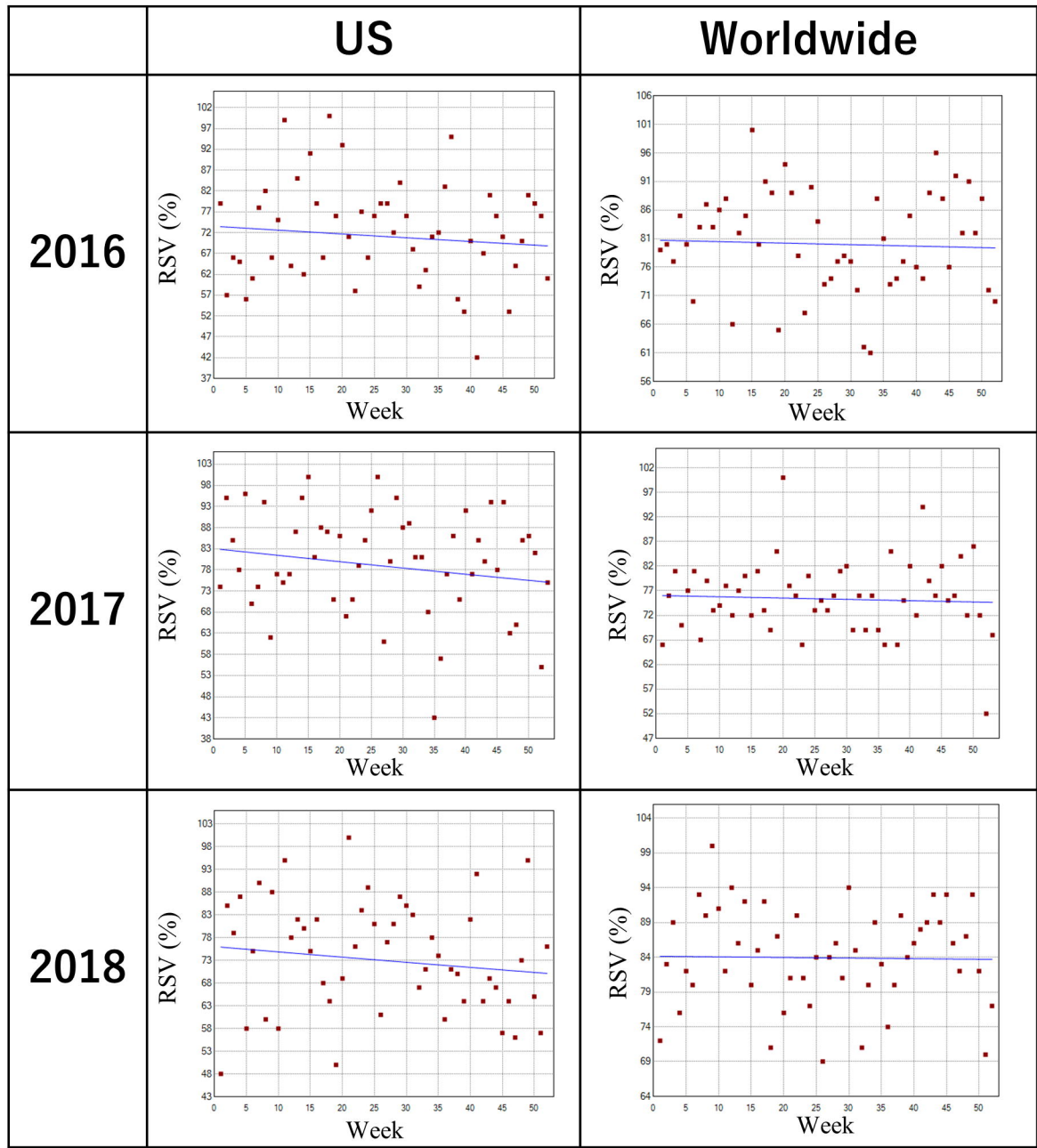


Figure 3

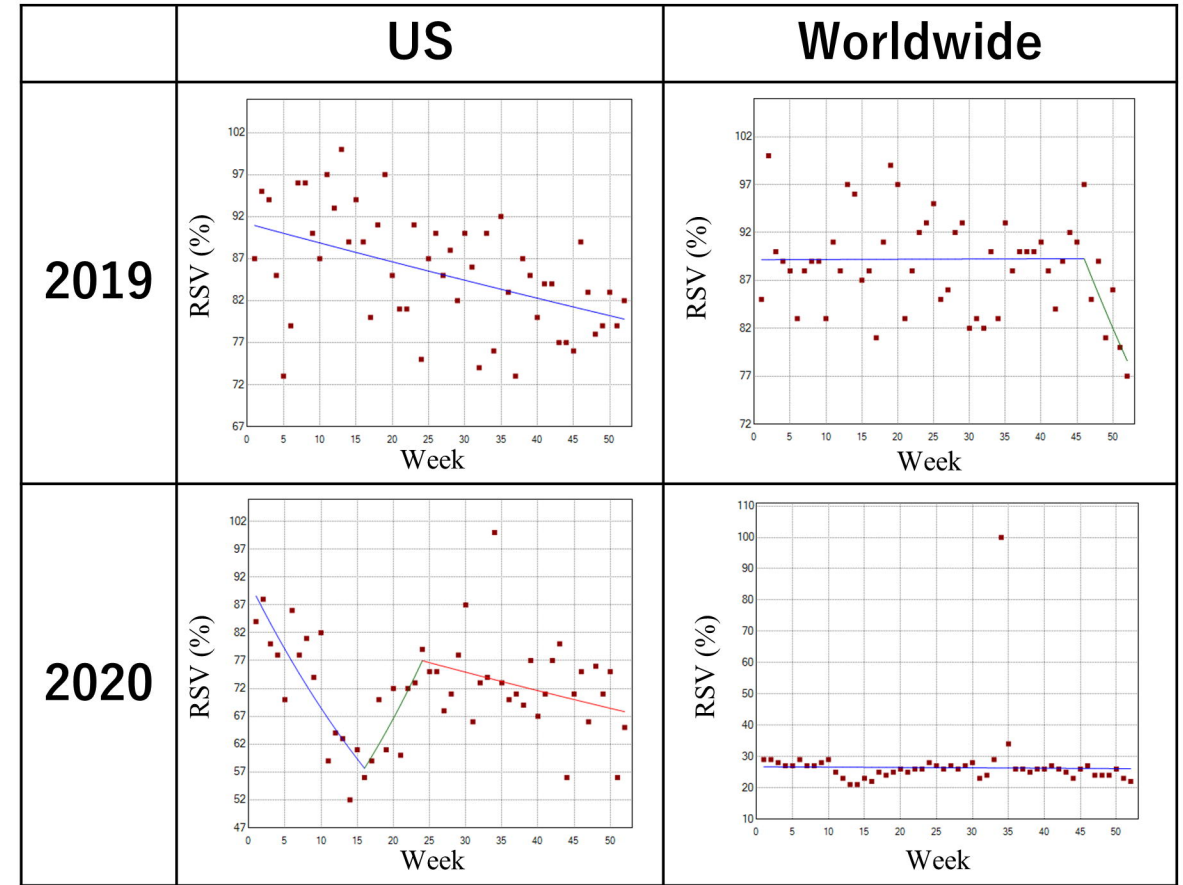
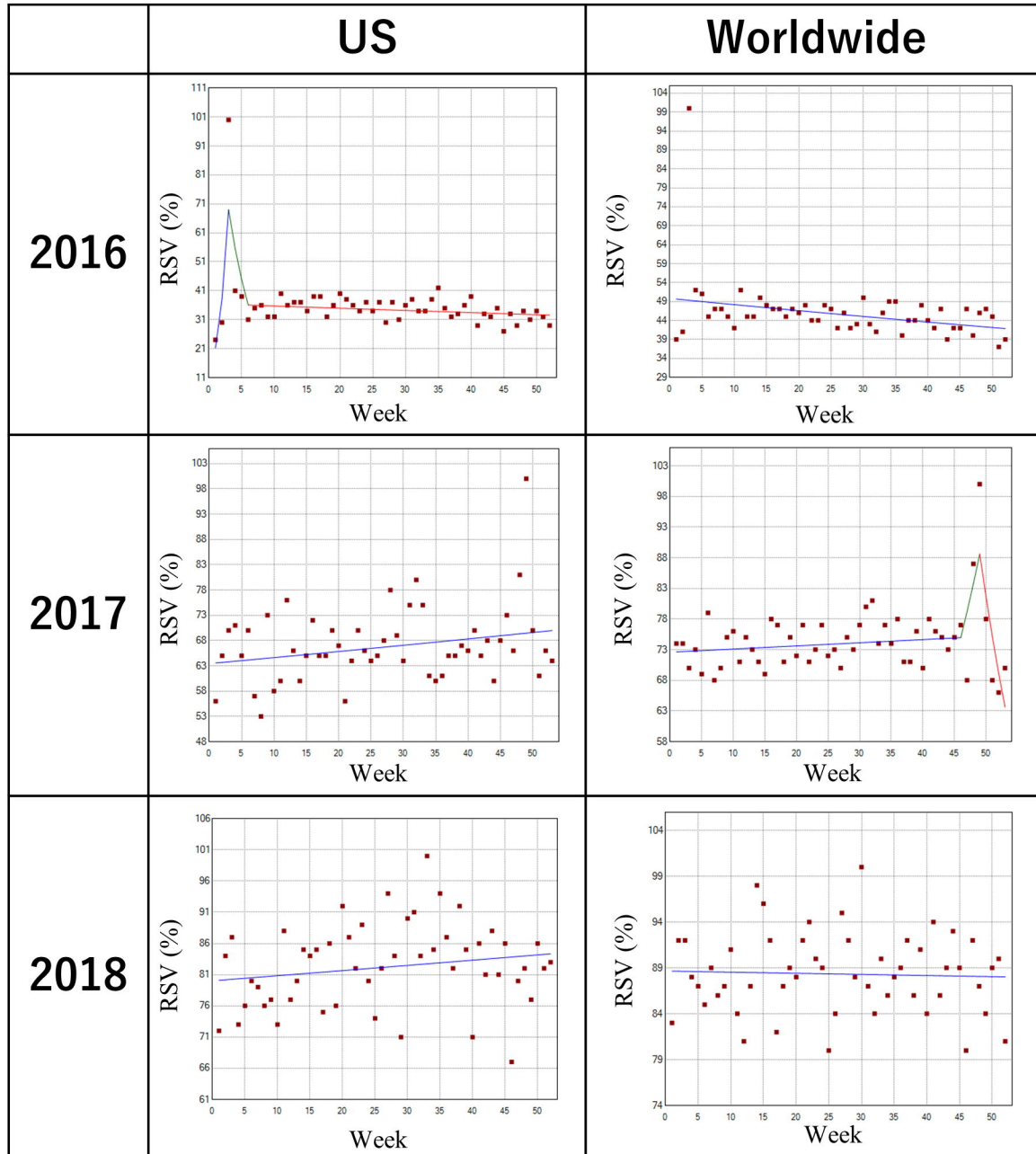


Figure 4

