

A mucosal antibody response is induced by intra-muscular SARS-CoV-2 mRNA vaccination

Salma Sheikh-Mohamed¹, Baweleta Isho^{1†}, Gary Y.C. Chao^{1†}, Michelle Zuo^{1†}, George R. Nahass², Rachel E. Salomon-Shulman², Grace Blacker², Mahya Fazel-Zarandi³, Bhavisha Rathod³, Karen Colwill³, Alaina Jamal³, Zhijie Li⁴, Keelia Quin de Launay⁵, Alyson Takaoka⁵, Julia Garnham-Takaoka⁵, Christina Fahim⁵, Aimee Paterson³, Angel Xinliu Li³, Nazrana Haq³, Shiva Barati³, Lois Gilbert³, Karen Green³, Mohammad Mozafarihashjin³, Philip Samaan⁶, Patrick Budykowski⁶, Walter L. Siqueira⁷, Samira Mubareka^{6,8}, Mario Ostrowski^{1,9,10}, James M. Rini^{4,11}, Olga L. Rojas¹², Allison McGeer³, Irving L. Weissman², Michal Caspi Tal², Sharon Straus^{5,*}, Anne-Claude Gingras^{3,4,13,*}, Jennifer L. Gommerman^{1,13,*}

Affiliations:

¹Department of Immunology, University of Toronto, Toronto, Canada

²Institute for Stem Cell Biology and Regenerative Medicine and the Ludwig Cancer Center, Stanford University School of Medicine, Stanford, CA, USA

³Lunenfeld-Tanenbaum Research Institute and Mount Sinai Hospital, Toronto, Canada

⁴Department of Molecular Genetics, University of Toronto, Toronto, Canada

⁵Li Ka Shing Knowledge Institute of St. Michael's Hospital, Unity Health Toronto, Canada

⁶Department of Laboratory Medicine and Pathobiology, University of Toronto, Toronto, Canada

⁷College of Dentistry, University of Saskatchewan, Saskatoon, Canada.

⁸Sunnybrook Health Sciences Centre, Toronto, Canada

⁹Department of Medicine, University of Toronto

¹⁰Keenan Research Centre for Biomedical Science, Toronto, Canada

¹¹Department of Biochemistry, University of Toronto

¹²Krembil Research Institute, University Health Network, Toronto, Canada

†Contributed equally

*Corresponding authors. Email: sharon.Straus@unityhealth.to, gingras@lunenfeld.ca and jen.gommerman@utoronto.ca

Abstract: The first line of defense against SARS-CoV-2 is the upper respiratory tract, yet we know little about the amount, type, and kinetics of mucosal anti-Spike antibodies (Ab) in response to intramuscular (i.m.) COVID-19 vaccination. We analyzed salivary Ab against SARS-CoV-2 Spike following mRNA/mRNA and adenovirus (Ad)/mRNA regimes. While anti-Spike/RBD IgG was detected in the saliva and correlated with the systemic response, anti-Spike/RBD IgA associated with the secretory component (sIgA) was also detected, and did not necessarily correlate with serum Ab. Only modest levels of neutralizing capacity were observed in saliva at 2 weeks post-dose 2, and by 6 months, anti-Spike/RBD IgG were greatly diminished. In contrast, low levels of anti-Spike sIgA persisted up to 6 months after dose 2. Our results show that SARS-CoV-2 vaccination induces an IgG response in the saliva that decays over time and an sIgA response that does not necessarily correlate with systemic immunity.

One-Sentence Summary: Our study delves into how intra-muscular mRNA/mRNA or mRNA/Ad COVID-19 vaccination regimes confer immunity in the oral cavity with important implications for understanding protection against breakthrough infections in healthy vaccinated people.

Main Text: SARS-CoV-2 is a novel and highly contagious respiratory virus that has quickly spread across the globe. The virus uses a protein called Spike and its associated receptor binding domain (RBD) to interact with angiotensin converting enzyme 2 (ACE2) on the surface of epithelial cells in the upper respiratory tract(1). SARS-CoV-2 is mainly transmitted via inhaled respiratory droplets, making the immune response in the oral and nasal mucosa an important first line of defense(2). Saliva is an important biofluid that can provide information about the mucosal antibody (Ab) response to SARS-CoV-2(3, 4). Antibodies detected in the saliva may be derived from the blood, entering via the gingival crevicular fluid(5). However, local Ab responses that include secretory IgA (sIgA) can also be generated in the salivary glands. SIgA exist as IgA dimers that are associated with the secretory component, a proteolytic cleavage product which remains associated with IgA after it is transported across epithelial cells via the polymeric Ig receptor (pIgR)(6).

Recent studies have shown that saliva contains infectious viral particles in symptomatic and asymptomatic individuals exposed to the virus, and a positive correlation exists between salivary viral load and COVID-19 symptoms(3), highlighting the importance of saliva as a proxy for studying the early mucosal immune response. The salivary glands themselves express ACE2 and harbor a significant population of IgA-producing plasma cells(3). We and others recently showed that IgM, IgG and IgA Ab against the SARS-CoV-2 Spike and RBD proteins are readily detected in the saliva of COVID-19 acute and convalescent patients(4, 7).

Approximately 5 billion people doses of COVID-19 vaccines have been administered worldwide, including, but not limited to, mRNA vaccines (eg BNT162b2, mRNA-1273) and adenovirus-based vaccines (eg Ad26.COV2). These vaccines are administered via the parenteral intramuscular route (i.m.). While these i.m. vaccinations induce a robust systemic IgG response capable of neutralizing SARS-CoV-2(8-11), whether they can induce Ab in the saliva that prevent break-through infections (and transmission) is unclear. To address this gap, we applied a previously established ELISA-based method for the detection of SARS-CoV-2-specific Ab in saliva(4) to samples cross-sectional and longitudinal cohorts of subjects who had received either BNT162b2, mRNA-1273 or ChAdOx1-S COVID-19 vaccinations.

Results

We first compared saliva from 150 long-term care home (LTCH) workers that received either BNT162b2 or mRNA-1273 (Table S1) with pooled negative controls used to establish a positive cut-off (Tables S2a-b), and COVID-19 acute and convalescent patients (Table S2c). We expressed the data as a percentage relative to a pooled positive control that was present in each plate (see Methods). When we analyzed saliva only from participants who had no evidence of prior SARS-CoV-2 infection (n=107), we found that 94% and 41% of participants were positive for anti-Spike IgG and IgA, and 93% and 20% of participants, were positive for anti-RBD IgG and IgA Ab (Fig. 1). Furthermore, levels of salivary anti-Spike/RBD Ab correlated well with anti-Spike/RBD Ab in the serum (Fig. S1). In multivariable analysis, age and prior SARS-CoV-2 infection were independently associated with the salivary anti-Spike IgA response (Table S3a).

In contrast, male sex had a negative independent association with the salivary anti-Spike IgG response (Table S3b) as has been observed before for COVID-19 and other vaccines (12, 13). Lastly, prior SARS-CoV-2 infection and time since vaccination were independently associated with higher and lower serum anti-RBD IgA levels, respectively (Table S3c).

5 In some countries, including Canada and the United Kingdom, vaccine dose sparing has resulted in a delayed administration of COVID-19 booster shots. As of June 2021, although most LTCH workers had been fully vaccinated, significant sectors of the Canadian population had only been administered a single dose of a COVID-19 vaccine, and the interval between dose 1 vs dose 2 was extended. Thus, we wished to ascertain if salivary Ab could be detected after a single dose
10 of a COVID-19 mRNA vaccine, and how long these titres would persist. We therefore collected samples from a second cohort of healthy adults that were followed longitudinally (Medical Sciences Building cohort – MSB-1; Table S4). These subjects received 1 dose of BNT1162b2 and a second dose of BNT1162b2 approximately 3 months later, with samples taken at baseline, 2 weeks post-dose 1, 3 months post-dose 1, and 2-weeks post-dose 2. For the entire sampling
15 period, of those participants that did not show evidence of prior SARS-CoV-2 infection (n=27) IgM levels were higher than baseline only for anti-Spike post-dose 2, and anti-RBD at 2 weeks post-dose 1 (Fig. 2A-B). Focusing therefore on IgG and IgA, we observed that 97% and 93% of participants were positive for anti-Spike IgG and IgA, and 52% and 41% were positive for anti-RBD IgG and IgA Ab in their saliva 2 weeks post-dose 1. However, 3 months after dose 1, the median level of salivary anti-Spike and anti-RBD IgG had diminished (25.14+/-15.35 and 73.93
20 +/- 35.22 compared to 13.56+/- 1.197 and 0.4545 +/- 0.1 at 2 weeks post-dose 1). Two weeks after the second dose, median IgG levels recovered (anti-RBD) or were elevated (anti-Spike). Thus 2 doses are required to maintain anti-Spike/RBD IgG levels in the saliva (Fig. 2C-F).

25 In contrast to IgG, the level of anti-Spike and anti-RBD IgA in the serum and saliva after dose 1 did not correlate with each other (Fig. S2). We therefore hypothesized that the IgA response to Spike and RBD induced by i.m. BNT162b2 vaccination provoked a localized IgA response in the oral cavity. To test this, we designed an ELISA that would detect secretory chain associated with anti-Spike/RBD Ab. We determined that the secretory chain signal associated with anti-SARS-CoV-2 salivary Ab could be out-competed with recombinant secretory chain, and no anti-Spike/RBD secretory chain signal was detected in pre-pandemic colostrum, demonstrating assay
30 specificity (Fig. S3). We then measured secretory component associated anti-SARS-CoV-2 Ab in the saliva of vaccinated LTCH participants who had received two doses of either BNT162b2 or mRNA-1273. We found that secretory component associated anti-Spike and anti-RBD Ab could be detected in 30% and 58% of participants, respectively, although the levels were lower than what was observed in COVID-19 patients (Fig. 3A-B). The anti-SARS-CoV2 associated secretory chain signal was independent of prior SARS-CoV-2 exposure as we observed no significant difference in this signal comparing participants who were positive vs negative for serum anti-nucleocapsid protein Ab (Fig. 3C-D). Of note, if we divided the LTCH cohort into those participants who were positive versus negative for anti-Spike/RBD IgA, we observed that
40 the secretory component signal was only detected in the IgA⁺ participants (Fig. 3E-F). In combination with the finding that most participants did not produce IgM Ab to anti-Spike/RBD, we conclude that secretory component is associating with anti-Spike/RBD IgA (sIgA). Therefore, a local sIgA response to Spike/RBD is produced in response to mRNA vaccination.

45 In addition to a longer interval between dose 1 and dose 2 (3 months), an additional modification in the Canadian COVID-19 response has been to provide a second dose of mRNA vaccine to subjects who received a first dose of ChAdOx1-S (Ad). Serum Ab levels to Ad/mRNA

heterologous vaccination have only been recently assessed(14), and nothing is known about how this regime impacts salivary Ab. To test this, we recruited participants who had received a first dose of ChAdOx1-S followed 3 months later by a second dose of either BNT162b2 or mRNA-1273 (MSB-2 cohort) and compared the salivary and serum Ab levels to those elicited by 2 doses of BNT162b2, also 3 months apart (MSB-1 cohort). With respect to salivary anti-SARS-CoV-2 Ab, we observed no significant difference 2 weeks post-dose 2 for either mRNA/mRNA versus Ad/mRNA participants for any of the IgM, IgG, IgA or sIgA readouts, except for anti-RBD IgG levels which were higher in the Ad/mRNA group (Fig. 2A-F last two columns). In addition, for both MSB-1 and MSB-2 cohorts a positive correlation was observed between serum and saliva Ab only for anti-Spike/RBD IgG, but not IgA, (Fig. S4). In summary, when first and second doses are 3 months apart, heterologous Ad/mRNA vaccination induces similar or greater levels of anti-RBD and anti-Spike salivary Ab compared to mRNA/mRNA vaccination, and Ad/mRNA induces antigen-specific sIgA that does not correlate with the systemic immune response.

Antibodies against SARS-CoV-2 can prevent viral spread through a variety of mechanisms, including preventing cellular entry by blocking interactions between the viral RBD and angiotensin converting enzyme-2 (ACE-2) expressed on host cells(15). To assess if either COVID-19 vaccine provokes neutralizing Ab against SARS-CoV-2 in the oral cavity, we tested saliva from the MSB-1 and MSB-2 cohorts in a pseudovirus entry assay. Specifically, saliva at two-fold dilutions was added to hACE2-mCherry expressing HEK293 cells that were co-incubated with recombinant Vesicular Stomatitis Virus (rVSV)-eGFP-SARS-CoV-2-Spike. Infection of HEK293 cells was measured by fluorescence over the course of 72 hours, with prevention of infection by added saliva read out as a green fluorescence reduction in neutralization titer (FRNT). In most cases, a greater proportion of hACE2 expressing HEK293 cells were infected with rVSV-eGFP-SARS-CoV-2-Spike when co-incubated with baseline saliva compared to matched saliva acquired after 1 or 2 doses of BNT162b2 (Fig. S5A). Moreover, the highest concentration of MSB-1 saliva samples had the strongest inhibitory effect on hACE2 HEK293 infection (Fig. S5B). However, when FRNT50 or FRNT70 values were tabulated across the cohort, statistical significance was not achieved compared to baseline samples (Fig. S5C). Similar results were observed for Ad/mRNA MSB-2 participants (Fig. S5D-E). Thus, compared to the corresponding baseline saliva from MSB-1 and MSB-2 participants, saliva acquired at 2 weeks post-dose 2 is better at preventing infection of hACE2 expressing HEK293 cells by rVSV-eGFP-SARS-CoV-2-Spike, but the FRNT50 and FRNT70 values are highly variable between participants.

Lastly, since the LTCH workers were the earliest recipients of mRNA vaccines during the Canadian roll-out, we had the opportunity to examine the stability of anti-Spike/RBD IgG and IgA in the saliva of a subset of the LTCH cohort who are now reaching 6 months post-dose 2. Whereas we observed a significant decline in anti-Spike IgG in the saliva at this time point compared to 2 weeks post-dose 2 (Fig. 1C), levels of anti-Spike IgA were maintained (Fig. 1E). In contrast, both IgG and IgA anti-RBD levels declined at 6 months (Fig. 1D, F). Plotted as a decay rate, we likewise observe a significant reduction in anti-Spike IgG on a per-person basis at 6 months post-dose 2 (Fig. S6A) that was not observed for IgA or sIgA (Fig. S6B-C), whereas there was a significant decline in both IgG and IgA anti-RBD Ab at this time point. Therefore, while anti-Spike/RBD IgG declines in the saliva at 6 months post-dose 2, the low levels of Spike-specific salivary IgA generated in some participants are more resilient to decay.

Discussion

We observe robust IgG levels to Spike/RBD in the saliva of participants immunized with BNT162b2 or mRNA-1273 that correlates with the systemic IgG response, and heterologous Ad/mRNA vaccination provokes a similar response in the saliva compared to homologous mRNA/mRNA vaccine regimes. We further show that IgG Ab to SARS-CoV-2 diminish at 3 months post-dose 1, and again at 6 months post-dose 2. A different picture emerges, however, for salivary anti-Spike/RBD IgA. In many participants we observed an IgA response to Spike/RBD in the saliva, although anti-Spike/RBD IgA are lower than what is observed in COVID-19 patients. Our results are consistent with a recent report by Ketas et al who likewise showed that after two doses of BNT162b2 or mRNA-1273 anti-Spike and anti-RBD Ab could be detected in saliva(16). However, in our study we now distinguish between locally produced and systemically derived IgA using secretory chain detection. To our surprise, we detect anti-Spike/RBD sIgA in the saliva, and these sIgA levels do not correlate with the levels of systemic anti-Spike/RBD IgA in serum in the MSB-1 and MSB-2 cohorts. It is unclear why a correlation is observed in the LTCH cohort between saliva and blood anti-Spike/RBD IgA (albeit weaker than the IgG correlations) but not the MSB-1 and MSB-2 cohorts. We speculate this may be a powering issue as some IgA will be made systemically, particularly in response to mRNA-1273 vaccination which induces very high titres of anti-Spike/RBD Ab (11, 17). Nevertheless, although the level of anti-Spike IgA is low, unlike anti-Spike IgG, it is maintained in the saliva at 6 months post-dose 2 in the LTCH cohort, further illustrating differences between the two isotypes. Taken together, our data suggest that COVID-19 vaccination induces a compartmentalized sIgA response in the oral mucosae that is distinct in kinetics and resilience from the IgG response.

It is unclear how sIgA anti-Spike/RBD are generated in the saliva following i.m. immunization. Of note, Spike protein can be detected in the plasma, increasing one to 5 days after mRNA-1273 vaccination using an ultra-sensitive detection technique(18). Thus one possibility is that plasma-associated Spike antigen may reach the salivary glands (which are surrounded by capillaries(19)), provoking a local sIgA response. Of note, the anti-Spike/RBD IgA response is higher 2 weeks post-dose 1 versus 2 weeks post-dose 2 in the MSB-2 cohort (Fig. 2E-F). We further hypothesize that the decline in anti-RBD sIgA at dose 2 may be due to rapid opsonization of Spike antigen by the exceedingly high levels of pre-existing serum anti-Spike IgG induced by dose 1. While beyond the scope of this study, using a highly sensitive assay such as Simoa® to measure Spike antigen in the saliva 1-5 days post-dose 1 versus post-dose 2 (which we did not collect) would be a logical next step to test this hypothesis. Another possibility is that a mucosal IgA response to mRNA vaccination takes place in the gut, and plasma cells generated at this location leave the gut (as we have shown before(20)) and disseminate to other mucosal surfaces, including the salivary glands. Indeed, transient expression of the gut homing integrin $\alpha 4\beta 7$ on yellow fever specific CD8⁺ T cells is observed following sub-cutaneous yellow fever vaccination in humans(21). If gut priming occurs in response to mRNA vaccination, then the kinetics and relative level of Ab we detect in the saliva post-vaccination should also be evident in the feces. Furthermore, recirculation between compartments could explain the sustained levels of anti-Spike IgA in the saliva at 6 months post-boost. Animal models are ideal for obtaining further insights into mechanisms that explain how SARS-CoV-2 mRNA vaccines provoke antigen-specific sIgA production at mucosal surfaces.

There are some limitations to our study: due to the sudden and rapid vaccine rollout we were only able to collect samples from LTCH participants after their second dose of mRNA. Moreover, this cohort contained a mixture of BNT162b2 and mRNA-1273 recipients, and these two mRNA vaccines have been shown to elicit slightly different levels of anti-SARS-CoV-2 Ab

which may have impacted our results(11, 17). Lastly, while both MSB-1 and MSB-2 saliva showed hints of neutralizing activity, when averaged across the cohort as an FRNT50 or FRNT70 value, this did not reach statistical significance over baseline samples. In contrast, measurement of neutralization capacity of independent samples from the MSB-1 cohort did yield statistically significant FRNT50 values when measured by Nahass et al(22). We speculate that inter-subject variability at 2 weeks post-dose 2 may explain these discrepancies. The reason for this may be technical – anti-viral properties of saliva beyond Ab (i.e. enzymes) may impact the ability of rVSV-eGFP-SARS-CoV-2-Spike to infect hACE2 expressing HEK293 cells, thus introducing background into the assay for baseline samples(23).

A single dose of BNT162b2 has been shown to blunt transmission against earlier variants of SARS-CoV-2 (24). We speculate that high levels of IgG and modest levels of IgA after dose 1 will provide this protection. However, limited neutralizing activity in the saliva and declining levels of anti-Spike/RBD IgG observed at longer time points post-dose 2, combined with high viral loads associated with newer variants (eg, delta), may overwhelm the mucosal firewall in some fully vaccinated people. Nevertheless, that we are thus far observing breakthrough infections in only a small percentage of doubly vaccinated subjects(25) hints that there are protective mechanisms that persist in the upper respiratory tract. Indeed, although levels are low, the percentage of LTCH participants that maintain anti-Spike/RBD IgG above the negative cutoff are 83% and 92% respectively at 6 months post-dose 2. Moreover, the residual anti-Spike/RBD IgA we detect at 6 months post-dose 2 may serve to “enchain” microbes as it does in other mucosal sites such as the gut(26), and even non-mucosal sites such as the brain meninges(27). Lastly, due to sampling limitation, sub-mucosal IgA was not taken into account in our saliva measurements, which could also contribute to protection against breakthrough infection.

In summary, we provide evidence of anti-Spike/RBD IgG and sIgA Ab in the saliva of vaccinated participants that may have the capacity to contribute to reducing person-to-person transmission of SARS-CoV-2.

References and Notes (references 4, 28-30 are cited in the Materials and Methods)

1. A. C. Walls *et al.*, Structure, Function, and Antigenicity of the SARS-CoV-2 Spike Glycoprotein. *Cell* **181**, 281-292 e286 (2020).
2. L. Zou *et al.*, SARS-CoV-2 Viral Load in Upper Respiratory Specimens of Infected Patients. *N Engl J Med* **382**, 1177-1179 (2020).
3. N. Huang *et al.*, SARS-CoV-2 infection of the oral cavity and saliva. *Nat Med* **27**, 892-903 (2021).
4. B. Isho *et al.*, Persistence of serum and saliva antibody responses to SARS-CoV-2 spike antigens in COVID-19 patients. *Sci Immunol* **5**, (2020).
5. J. L. Ebersole, Humoral immune responses in gingival crevice fluid: local and systemic implications. *Periodontol 2000* **31**, 135-166 (2003).
6. B. M. Stadtmueller *et al.*, The structure and dynamics of secretory component and its interactions with polymeric immunoglobulins. *Elife* **5**, (2016).
7. D. Sterlin *et al.*, IgA dominates the early neutralizing antibody response to SARS-CoV-2. *MedRxiv* <https://www.medrxiv.org/content/10.1101/2020.06.10.20126532v1>, (2020).
8. E. E. Walsh *et al.*, Safety and Immunogenicity of Two RNA-Based Covid-19 Vaccine Candidates. *N Engl J Med* **383**, 2439-2450 (2020).

9. E. J. Anderson *et al.*, Safety and Immunogenicity of SARS-CoV-2 mRNA-1273 Vaccine in Older Adults. *N Engl J Med* **383**, 2427-2438 (2020).
10. J. Sadoff *et al.*, Interim Results of a Phase 1-2a Trial of Ad26.COV2.S Covid-19 Vaccine. *N Engl J Med* **384**, 1824-1835 (2021).
- 5 11. D. S. Khoury *et al.*, Neutralizing antibody levels are highly predictive of immune protection from symptomatic SARS-CoV-2 infection. *Nat Med*, (2021).
12. S. Fischinger, C. M. Boudreau, A. L. Butler, H. Streeck, G. Alter, Sex differences in vaccine-induced humoral immunity. *Semin Immunopathol* **41**, 239-249 (2019).
13. A. R. Demonbreun *et al.*, COVID-19 mRNA vaccination generates greater IgG levels in women compared to men. *J Infect Dis*, (2021).
- 10 14. J. Barros-Martins *et al.*, Immune responses against SARS-CoV-2 variants after heterologous and homologous ChAdOx1 nCoV-19/BNT162b2 vaccination. *Nat Med*, (2021).
- 15 15. M. Sadarangani, A. Marchant, T. R. Kollmann, Immunological mechanisms of vaccine-induced protection against COVID-19 in humans. *Nat Rev Immunol*, (2021).
16. T. J. Ketas *et al.*, Antibody responses to SARS-CoV-2 mRNA vaccines are detectable in saliva. *bioRxiv*, (2021).
17. K. T. Abe *et al.*, Neutralizing antibody responses to SARS-CoV-2 variants in vaccinated Ontario long-term care home residents and workers. *medRxiv*, 2021.2008.2006.21261721 (2021).
- 20 18. A. F. Ogata *et al.*, Circulating SARS-CoV-2 Vaccine Antigen Detected in the Plasma of mRNA-1273 Vaccine Recipients. *Clin Infect Dis*, (2021).
19. C. Z. Zhang *et al.*, Saliva in the diagnosis of diseases. *Int J Oral Sci* **8**, 133-137 (2016).
20. O. L. Rojas *et al.*, Recirculating Intestinal IgA-Producing Cells Regulate Neuroinflammation via IL-10. *Cell* **176**, 610-624 e618 (2019).
- 25 21. D. Masopust *et al.*, Dynamic T cell migration program provides resident memory within intestinal epithelium. *J Exp Med* **207**, 553-564 (2010).
22. N. G.R. *et al.*, Intramuscular SARS-CoV-2 vaccines elicit varying degrees of plasma and salivary antibody responses as compared to natural infection *Medrxiv (In process)*, (2021).
- 30 23. D. Malamud *et al.*, Antiviral activities in human saliva. *Adv Dent Res* **23**, 34-37 (2011).
24. N. K. Jones *et al.*, Single-dose BNT162b2 vaccine protects against asymptomatic SARS-CoV-2 infection. *Elife* **10**, (2021).
25. M. Bergwerk *et al.*, Covid-19 Breakthrough Infections in Vaccinated Health Care Workers. *N Engl J Med*, (2021).
- 35 26. K. Moor *et al.*, High-avidity IgA protects the intestine by enchainning growing bacteria. *Nature* **544**, 498-502 (2017).
27. Z. Fitzpatrick *et al.*, Gut-educated IgA plasma cells defend the meningeal venous sinuses. *Nature* **587**, 472-476 (2020).
- 40

Acknowledgments: Dr. Yves Durocher at the National Research Council of Canada (NRC) kindly donated reagents for the serum assays. Recombinant Vesicular Stomatitis Virus (rVSV)-eGFP-SARS-CoV-2-Spike was generously provided by Dr. Sean Whelan, and hACE2-mCherry expressing HEK293 cells was generously provided by Dr. Siyuan Ding, Washington University, St. Louis for neutralization assays performed by the Stanford scientists. We thank Elizabeth Yue, Antonio Estacio, Serena Loklam Chau, Ryan Law and Eric Yixiao Cao for LTCH sample processing and sustaining the infrastructure of sample processing in the Ostrowski lab. We thank

Jeff Browning for critical reading of this manuscript. We would like to thank Florian Krammer for advice on secretory component detection by ELISA.

Funding

Foundation grant from the Canadian Institutes of Health Research (JG, Fund #15992).

COVID-19 Immunity Task force grant (SS, AM, MO, ACG and JG).

“Ontario Together” province of Ontario grant (JG and ACG)

Donation from the Royal Bank of Canada (RBC)

Donation from the Krembil Foundation to the Sinai Health System Foundation.

Author contributions

Conceptualization: JG, AC-G, SS, AM

Methodology: GC, MF-Z, JR, ZL, PS, PB, MO, KQdL, AT, JG-T, CF, AP, AZL, NH, SB, LG, KG, MM, WLS

Investigation: SS-M, BI, MZ, GRN, RES-S, GB, MF-Z

Visualization: KC, AJ,

Funding Acquisition: JG, AC-G, SS, AM, MO,

Supervision: JG, AC-G, ILW, MCT, SS, AM, SM

Writing- original draft: JG, SS-M

Writing-review and editing: JG, SS-M, AC-G, AM

Competing interests: The authors have no competing interests that are relevant to the work in this study. None of the authors have commercial interests in any of the 3 vaccines that were studied herein. M.C.T. consults for Orca Bio, Guidepoint, and is an advisor at Acari Bio.

Data and materials availability: All data, code, and materials used in the analysis are available in some form to any researcher for purposes of reproducing or extending the analysis. Materials transfer agreements (MTAs) with the University of Toronto and Mount Sinai Hospital are required for sample sharing. All data are available in the main text or the supplementary materials.

Supplementary Materials

Materials and Methods

Figs. S1 to S6

Tables S1 to S5

References (1-4)

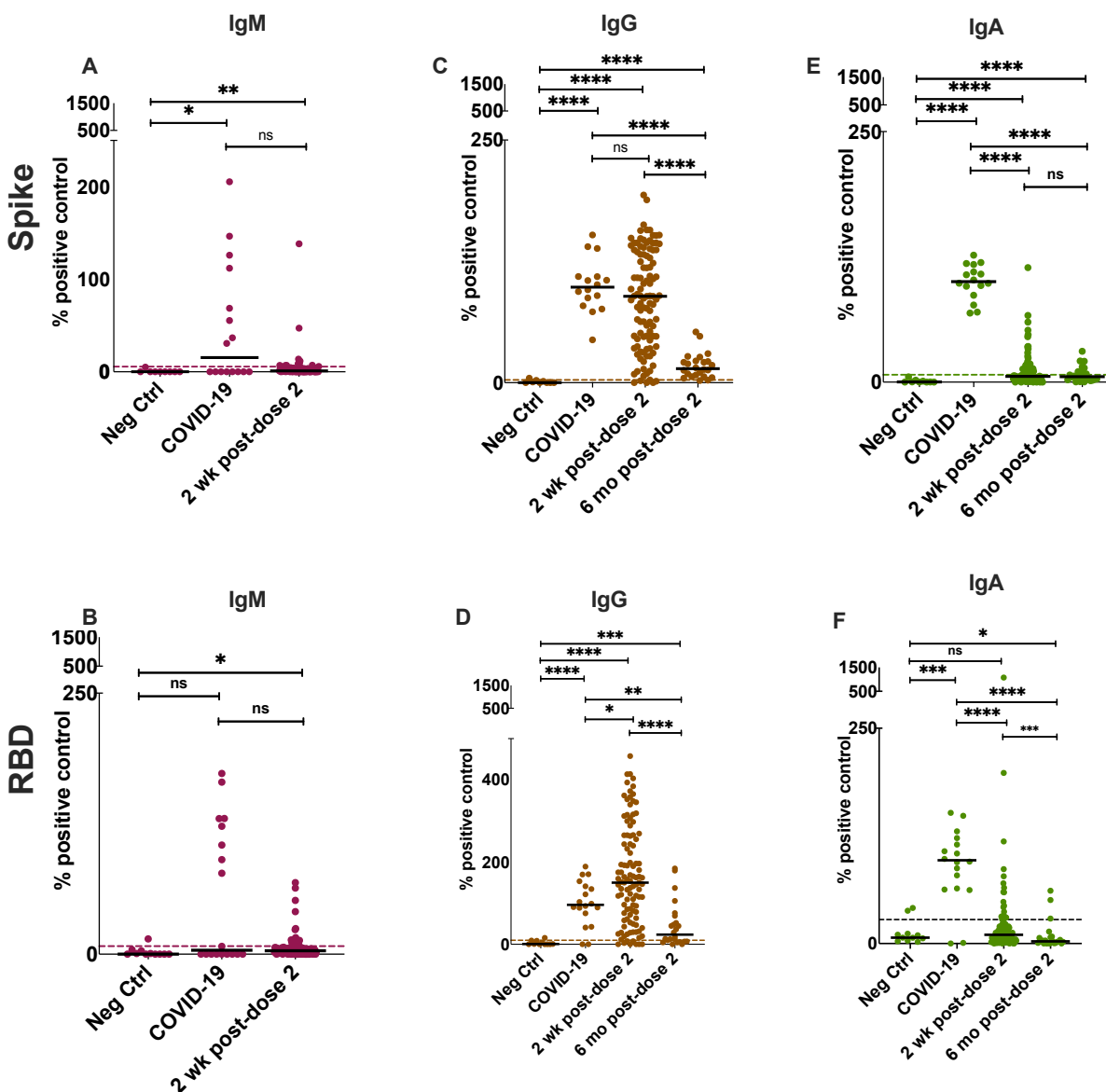


Fig 1. Detection of anti-SARS-CoV-2 Spike and RBD specific antibodies in the saliva of mRNA vaccinated participants. Anti-Spike (A,C,E) and anti-RBD (B,D,F) antibodies were detected using an ELISA-based assay in the saliva of vaccinated participants after two-doses of either BNT162b2 or mRNA-1273 (n=107 for both combined). COVID-19 controls consisted of saliva collected from acute and convalescent patients (n = 18). These were compared to n=9 individually run negative controls. The positive cutoff (dotted line) was calculated as 2 standard deviations above the mean of a pool of negative control samples (n=51) for each individual assay. Y-axis was set at 1500% for all plots as this was the highest value for measurements in Fig. 2D, allowing for cross-isotype comparison in all cohorts. All data is expressed as a percentage of the pooled positive plate control, calculated using the AUC for each sample normalized to the AUC of the positive control (see Methods). Solid black bars denote the median for each cohort. Mann-Whitney U test was used to calculate significance, where ns=not significant, *=p<0.05 and ****=p<0.0001.

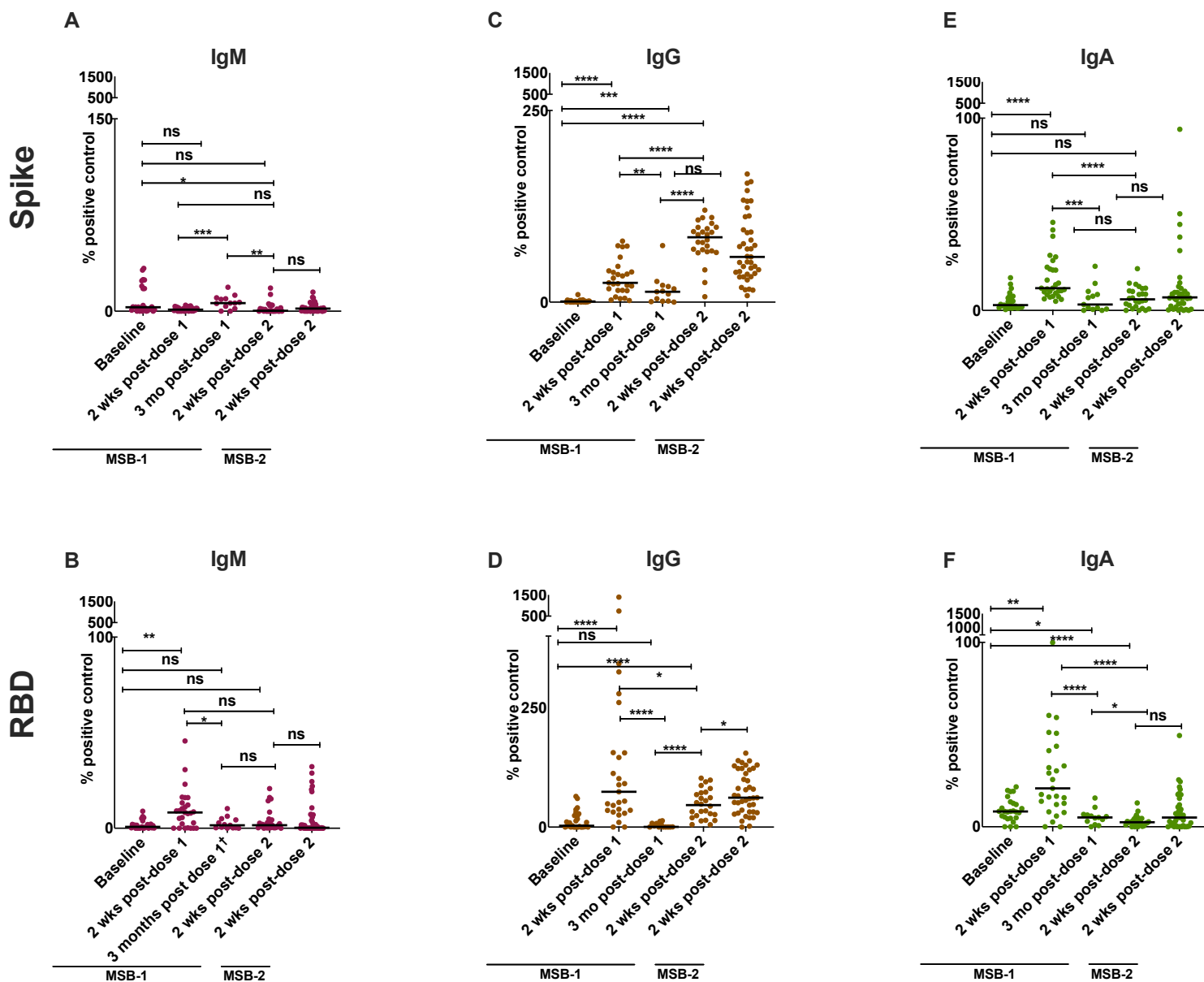


Fig 2. Detection of anti-SARS-CoV-2 Spike and RBD specific antibodies in the saliva of a longitudinal mRNA/mRNA cohort and Ad/mRNA vaccinated participants.

5 Anti-Spike (A,C,E) and anti-RBD (B,D,F) antibodies were detected using an ELISA-based assay in the saliva of vaccinated participants that were followed at sequential timepoints before and after dose 1 and dose 2 of BNT162b2 (MSB-1, n=27 with † = n=11 participants at this timepoint), as well as participants who received dose 1 of ChAdOx1-S and dose 2 of either BNT162b2 or mRNA1273 (MSB-2, n=36). Y-axis was set at 1500% for all plots as this was the highest value for measurements in Fig. 2D, allowing for cross-isotype comparison in all cohorts. All data is expressed as a percentage of the pooled positive plate control, calculated using the AUC for each sample normalized to the AUC of the positive control (see Methods). Solid black bars denote the median for each cohort. Mann-Whitney U test was used to calculate significance, where ns=not significant, *= $p < 0.05$, **= $p < 0.01$, ***= $p < 0.001$ and ****= $p < 0.0001$.

10

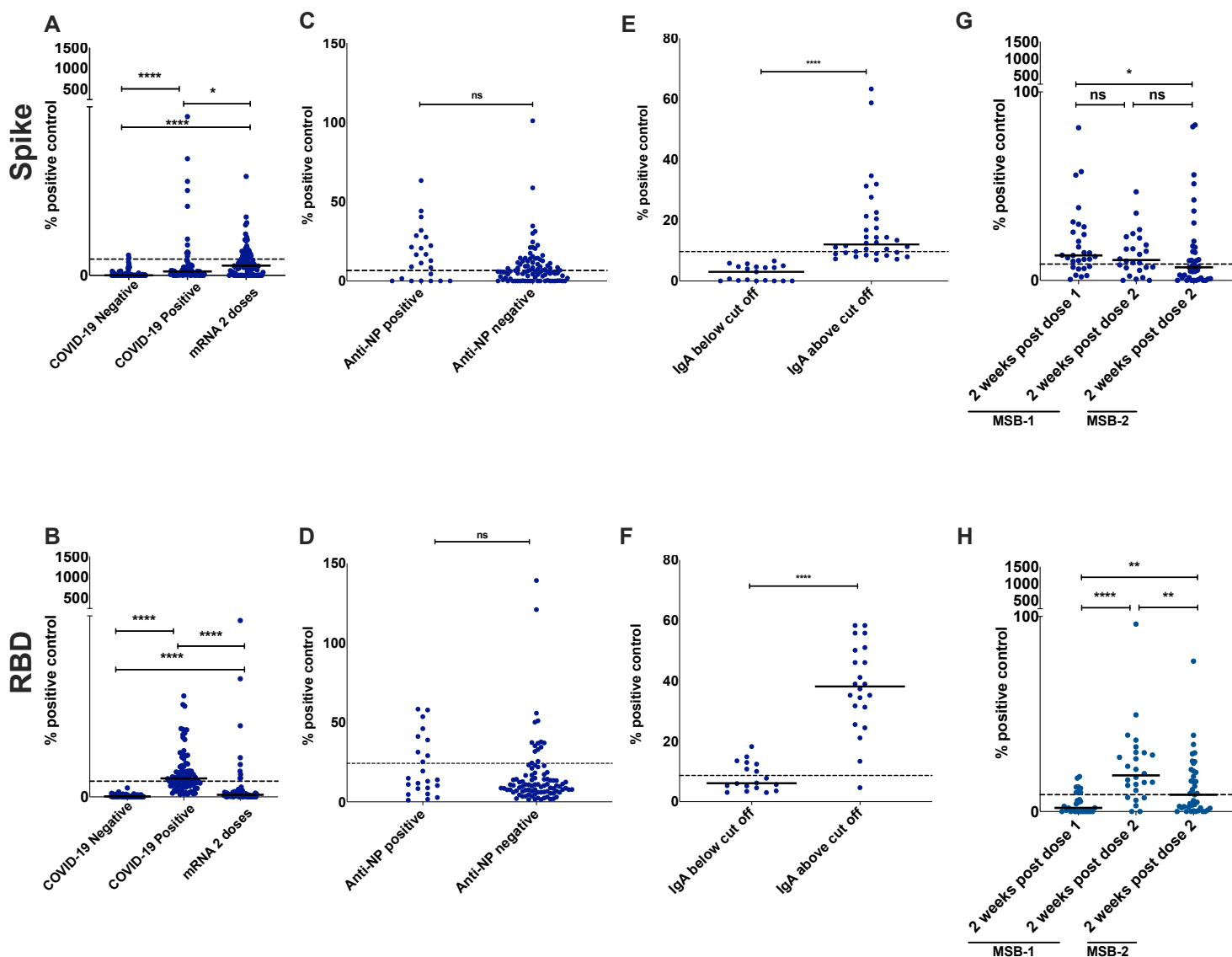


Fig 3. Secretory component is associated with Spike/RBD-specific antibodies in the saliva of mRNA vaccinated participants

An ELISA-based method was used to detect secretory component associated with anti-Spike (A) and anti-RBD (B) antibodies in the saliva of 2-dose vaccinated subjects (n=93), as well as saliva taken from COVID-19 negative and positive patients (n=77 and 75, respectively). Subjects receiving 2 doses of BNT162b2 or mRNA1273 (C,D) were further grouped based on anti-NP antibody status, which is indicative of previous infection. Subsetting of 2-dose vaccinated subjects into those that were considered above (n=34) or below (n=19) the positive cut off for salivary IgA analysed for secretory component (E,F). Secretory component associated with anti-spike (G) and anti-RBD (H) antibodies in samples collected post-dose 1 and dose 2 from both MSB-1 (n=27) and MSB-2 (n=36). Solid black bars denote the median for each cohort, while the dotted black line denotes the positive cutoff, calculated as 2 standard deviations above the mean of a pool of negative control samples. Mann-Whitney U test was used to calculate significance, with ns=not significant, and ****= $p < 0.0001$.