

1 **Binary toxin expression by *Clostridioides difficile* is associated with worse disease**

2 Mary K. Young<sup>1</sup>, Jhansi L. Leslie<sup>1</sup>, Gregory R. Madden<sup>1</sup>, David M. Lysterly<sup>2</sup>, Robert J. Carman<sup>2</sup>,

3 David B. Stewart<sup>3</sup>, Mayuresh M. Abhyankar<sup>1</sup>, William A. Petri Jr.<sup>1, 4, 5, #</sup>

4 <sup>1</sup>Division of Infectious Diseases and International Health, Department of Medicine, University of  
5 Virginia Health System, Charlottesville, Virginia, USA

6 <sup>2</sup>TechLab Inc, Blacksburg, Virginia, USA

7 <sup>3</sup>Department of Surgery, Southern Illinois University School of Medicine, Springfield, Illinois,  
8 USA

9 <sup>4</sup>Department of Microbiology, Immunology and Cancer Biology, University of Virginia School of  
10 Medicine, Charlottesville, Virginia, USA

11 <sup>5</sup>Department of Pathology, University of Virginia School of Medicine, Charlottesville, Virginia,  
12 USA

13 #Corresponding Author

14 William A. Petri Jr.

15 PO Box 801340

16 Charlottesville, VA 22908

17 Telephone: 434-924-5621

18 Fax: 434-924-0075

19 Email: wap3g@virginia.edu

20

21 **Key words:** *C. difficile*, CDT, binary toxin, CDI, ribotype 027

22 **Running title:** CDT in stool associated with worse disease

23 **Summary:** We found that CDI patients with CDT detected in stool by immunoassay were more  
24 likely to have severe disease and had higher 90-day mortality.

25

26

27 **Abstract**

28 **Background.** The incidence of *Clostridioides difficile* infection (CDI) has increased over the past  
29 two decades and is considered an urgent threat by the Centers for Disease Control.

30 Hypervirulent strains such as ribotype 027, that possess genes for an additional toxin *C. difficile*  
31 binary toxin (CDT) are contributing to increased morbidity and mortality. In the mouse model,  
32 CDT activates Toll-like receptor 2 resulting in suppression of a protective type 2 innate immune  
33 response mediated by eosinophils.

34 **Methods.** We retrospectively tested stool from 215 CDI patients for CDT by enzyme-linked  
35 immunosorbent assay (ELISA). Stratifying patients by CDT status, we assessed if disease severity  
36 and clinical outcomes correlated with CDT positivity. Additionally, we performed 16 S rRNA  
37 gene sequencing to examine if CDT positive samples had an altered fecal microbiota.

38 **Results.** We found that patients with CdtB, the pore forming component of CDT, detected in  
39 their stool were more likely to have severe disease and had higher 90-day mortality compared  
40 to CDT negative patients. CDT positive patients also had higher *C. difficile* bacterial burden and  
41 white blood cell counts. There was no significant difference in gut microbiome diversity  
42 between CDT positive and negative patients.

43 **Conclusions.** Patients with fecal samples that were positive for CDT had increased disease  
44 severity and worse clinical outcomes. Utilization of PCR and *C. difficile* Toxins A and B testing  
45 may not reveal the entire picture when diagnosing CDI and the detection of CDT-expressing  
46 strains may be valuable during patient treatment.

47

48

## 49 Introduction

50 *Clostridioides difficile* (*C. difficile*) is a gram-positive, spore-forming bacteria that can cause  
51 diarrhea and colitis in patients with dysbiosis. In 2017, *C. difficile* infection (CDI) affected over  
52 200,000 people a year, resulting in almost 13,000 deaths and was considered an urgent  
53 antibiotic resistant threat by the Centers for Disease Control (1). The increased prevalence of  
54 CDI is attributed to novel hypervirulent strains that cause worse disease and higher mortality  
55 (2). In addition to the main virulence factors, toxins A and B, these hypervirulent strains  
56 produce a third toxin known as *C. difficile* binary toxin (CDT) or binary toxin. CDT is comprised of  
57 CdtA, an actin-specific ADP-ribosyl transferase, and CdtB, the receptor-binding component (3).  
58 Our lab has shown that in a mouse model, CDT induces Toll-like receptor 2 (TLR2) pathways  
59 resulting in increased host inflammation and suppressed protective eosinophils (4).  
60 With the increased prevalence of CDI in the United States, there has been substantial debate  
61 over the optimal diagnostic approach (5). The use of highly sensitive polymerase chain reaction  
62 (PCR) (that detects the presence of *C. difficile* but not toxin production) and increased clinical  
63 testing of asymptomatic individuals is believed to contribute to the overdiagnosis of CDI (6-8).  
64 While PCR positive, toxin A/B enzyme immunoassay (EIA) positive patients have increased  
65 disease severity compared to patients with discordant tests (PCR-, toxin A/B EIA+), fatal  
66 infections may occur even in the absence of detectable toxins A/B (8-10). It is uncommon for *C.*  
67 *difficile* strains to be ribotyped or tested for CDT-encoded genes, leading to insufficient  
68 information on potential prognosis. Previous studies have shown that detection of CDT genes in  
69 stool by PCR has been associated with worse outcomes, but no investigation has been done to  
70 compare disease severity and toxin detection by immunoassay (2, 11, 12).

71 Although little has been published on expressed CDT in stool, Carman et al (2018) showed that  
72 027, by far the most dominant of the CDT-producing ribotypes, was about 10-fold more  
73 abundant in patient feces than was 014/020 and made about 10-fold more TcdA and TcdB than  
74 014/020. Ribotype 014/020 is a non-CDT producer and probably the most widespread and  
75 abundant ribotype before the emergence of fluoroquinolone resistance, notably in 027.  
76 Furthermore 027 infection resulted in about a five-fold increase in fecal lactoferrin compared  
77 with 014/020 (13). In this study, we wished to further explore the relationship between CDT  
78 and disease severity by testing for toxin in stool with enzyme-linked immunosorbent assay  
79 (ELISA). We found that CDI patients with CDT-expressing strains had increase disease severity  
80 and worse clinical outcomes.

81

## 82 **Methods**

### 83 **Sample Collection and Patient Information**

84 Stool collected from 215 CDI patients were retrospectively identified from the University of  
85 Virginia (UVA) Medical Center's electronic medical records (EMR). Stool samples were collected  
86 between 2015-2017 and were held in the clinical laboratory at 4°C for 48 hours, then aliquoted  
87 and stored at -80°C until testing. All patients had diarrhea and were positive for *C. difficile* by  
88 Xpert *C. difficile* PCR (Cepheid, Sunnyvale, CA). Data on the presence or absence of CDT genes  
89 was not collected, nor were isolates collected for typing. Patient demographics, clinical lab  
90 results and disease outcomes were collected retrospectively from UVA Clinical Data Repository  
91 and the EMR. The collection of patient data was approved by the institutional review board  
92 (protocol IRB-HSR 16926).

93 **CdtB Detection**

94 Stool samples from 215 patients were tested using a previously described research-only ELISA  
95 for *Clostridium difficile* CdtB (14).

96 ***C. difficile* TcdA and TcdB Detection**

97 All stool samples were tested for **TcdA and TcdB** by C. DIFFICILE TOX A/B II™ according to  
98 manufacturer instructions (catalog no. T5015, TechLab Inc, Blacksburg, VA).

99 **Lactoferrin Detection**

100 Stool lactoferrin was assayed using LACTOFERRIN SCAN® according to manufacturer  
101 instructions (catalog no. T5009 / 30351, TechLab Inc, Blacksburg, VA).

102 **Fecal DNA Extraction/16S rRNA Gene V4 region sequencing**

103 DNA from patient fecal samples was extracted using the QIAamp DNA Stool Mini Kit (catalog  
104 no. 51504, Qiagen, Hilden, Germany). For each sample, the V4 region of the 16S rRNA gene was  
105 amplified using the dual indexing sequencing strategy as described previously (15). Sequencing  
106 was done on the Illumina MiSeq platform, using a MiSeq Reagent Kit V2 500 cycles (Illumina  
107 cat# MS102-2003), according to the manufacturer's instructions with modifications found in the  
108 Schloss SOP: [https://github.com/SchlossLab/MiSeq\\_WetLab\\_SOP](https://github.com/SchlossLab/MiSeq_WetLab_SOP). The mock community  
109 ZymoBIOMICS Microbial Community DNA Standard (Zymo Research cat# D6306) was  
110 sequenced to monitor sequencing error.

111 **16 S rRNA Gene Amplicon Curation and Analysis**

112 The 16S data curation and analysis from the human stool samples was performed using R  
113 version 4.0.3. Sequences were curated using the R package DADA2 version 1.18 (16). Briefly,  
114 reads were filtered and trimmed using standard parameters outlined in the DADA2v 1.8

115 pipeline. The error rates for the amplicon datasets were determined using the DADA2's  
116 implementation of a parametric error model. Samples were then dereplicated and sequence  
117 and variants were inferred. Overlapping forward and reverse reads were merged and  
118 sequences that were shorter than 251 bp or longer than 255 bp were removed. Finally,  
119 chimeras were removed. Taxonomy was assigned to amplicon sequence variants (ASVs) using  
120 the DADA2- formatted SILVA taxonomic training data release 132 (17). Samples with less than  
121 16,000 reads per sample were removed from the analysis (this included the extraction blank).  
122 The sequences associated with this analysis will be deposited in the SRA. Following sequence  
123 curation, the packages phyloseq v1.34.0, vegan v2.5.7, dplyer v1.0.6 and ggpubr v0.4.0 were  
124 used for analysis and generation of figures (18).

## 125 **Statistical Methods**

126 All statistical comparisons and graphs were made using GraphPad Prism 9 or using R version  
127 4.0.3. Comparisons of CDT positive and CDT negative patient demographics, Toxin A/B status  
128 and disease outcomes were calculated using Chi-square test. Differences in white blood cell  
129 counts (WBC), clinical PCR cycle threshold (Ct) values, stool lactoferrin, days in the ICU and days  
130 hospitalized between CDT positive and CDT negative patients were calculated using a Mann-  
131 Whitney U test. Differences between Simpson and Shannon indexes were found using a  
132 Wilcoxon signed-rank test. A p-value greater than 0.05 was considered significant.

133

## 134 **Results**

### 135 **Patient Characteristics**

136 Of the 215 patient stool samples analyzed, 32 were positive for CDT protein (Table 1). Nine of  
137 the 32 were negative in the A/BII ELISA. Both CDT positive and CDT negative cohorts were split  
138 evenly by sex, and there was no significant difference in age ( $p=0.1005$ ). CDT positive patients  
139 were more likely to also be positive for Toxins A/B ( $p = 0.0006$ ) and have a WBC count higher  
140 than  $15,000/\mu\text{l}$  ( $p=0.0019$ ). Patients testing positive for CDT were also more likely to be  
141 admitted to the ICU ( $p=0.0113$ ) and more likely to die within 90 days of diagnosis ( $p=0.0320$ ).

142 **Patients testing positive for CDT had increased bacterial burden, white blood cell count and**  
143 **intestinal inflammation**

144 The 32 CDT positive patients had significantly higher WBC ( $p=0.0129$ , Figure 1a). These patients  
145 also had higher bacterial burden, as indicated by lower Ct value ( $p=0.0008$ , Figure 1b). Of the  
146 32 CDT positive patients, 9 were toxin A/B negative. When we compared bacterial burden from  
147 the samples that were discordant for the three toxins (CDT positive, negative for toxin A/B) to  
148 the burden in the 23 patients that tested positive for both CDT and toxins A/B, those that were  
149 positive for all toxins had significantly lower Ct values (Figure S1,  $p=0.0096$ ). Thus, patients with  
150 CDT positive, toxin A/B positive samples had higher *C. difficile* burden compared to patients  
151 positive for CDT and negative for toxin A/B. Patients testing positive for CDT trended to have  
152 higher lactoferrin levels compared to CDT negative patients ( $p=0.0646$ , Figure 1c).

153 **CDT positive patients had increased hospital and ICU stays**

154 Of the 215 CDI patients, the CDT positive patients had longer hospitalizations ( $p=0.0468$ ) and  
155 days in the ICU ( $p=0.0083$ , Figure 2). Patients testing positive for CDT stayed in the hospital 6.5  
156 days longer than CDT negative patients. CDT negative patients stayed in the ICU on average  
157 1.73 days compared to 3.59 days for CDT positive patients.

158 **No differences in gut microbiome alpha diversity between CDT positive and negative patients**

159 We sought to determine if the structure of the fecal microbiome was altered in CDT+ patients.

160 Composition of the fecal microbiota from 172 patients was profiled using amplicon sequencing

161 of the 16S rRNA gene V4 region. While CDT negative patients trended towards slightly

162 increased alpha diversity as measured by either Simpson diversity index or Shannon diversity,

163 there was not a significant difference using either metric (Figure 3a,  $p=0.26$ , Figure 3b,  $p=0.16$ ).

164

165 **Discussion**

166 Previous studies have shown that infection with strains positive for the CDTb gene result in

167 increased disease severity, increased disease recurrence and higher mortality rates (2, 11-13).

168 Here we reiterate those earlier findings and further show that patients with CDT protein

169 present in stool (9/32 (28%) of which had no detectable toxin A/B production) had worse

170 disease outcomes, with increased rates of ICU admissions and higher mortality. Additionally,

171 these patients had longer stays in the hospital and ICU, causing increased burden to health care

172 systems.

173 Other measures of disease severity were also worse in CDT+ infections. One characteristic of

174 severe CDI is having a WBC count of greater than 15,000/ $\mu$ l (19). We found that 45.2% of CDT

175 positive patients were considered to have severe CDI based on this guideline compared to

176 19.5% of CDT negative patients. Overall CDT positive patients had higher WBC counts

177 ( $p=0.0129$ ). Other groups have similarly found that patients infected with *C. difficile* strains

178 encode for CDT have elevated WBC count (2, 11, 12). We did not find any significant differences

179 in neutrophils, eosinophils, lymphocytes, monocytes, or basophils, although our data set was



180 incomplete for these values. Patients with CDT positive stools also exhibited higher bacterial  
181 burdens as indicated by lower Ct values ( $p=0.0008$ ) consistent with higher burden being  
182 correlated with more severe disease (13, 20). We also found that CDT positive, toxin A/B  
183 positive patients had lower Ct values compared to CDT positive, toxin A/B negative ( $p=0.0096$ ),  
184 even though measures in clinical disease did not differ. Boone et al found that patients with the  
185 CDT producing hypervirulent ribotype 027 had increased lactoferrin compared to patients  
186 colonized with other strains (21). We confirmed the earlier finding that CDT positive patients  
187 had higher lactoferrin levels, although in our instance this was not statistically significant  
188 ( $p=0.06$ ).

189 Lastly, we performed 16 S rRNA gene sequencing to determine if there were differences in gut  
190 microbiome diversity in CDT positive and negative patients. Studies have described a decreased  
191 gut microbiome diversity in patients with CDI compared to control patients (22-24). We found  
192 no significant differences in Simpson or Shannon indexes, although CDT positive patients  
193 tended towards having lower microbiome diversity. These results indicate that increased  
194 disease severity related to CDT is not associated with decreased gut microbiome diversity.

195 In conclusion, we believe we are the first to demonstrate that patients with stool testing  
196 positive for CDT by ELISA have more severe CDI and worse disease outcomes. The presence of  
197 stool CDT was associated with higher bacterial burden and WBC counts, as well as longer  
198 hospital and ICU stays and increased mortality. There was no significant difference in gut  
199 microbiome diversity between CDT positive and negative patients. Testing for the presence of  
200 CDT in stool is a valuable tool to better explain differences in disease severity amongst CDI

201 patients. Detection of CDT and CDT-expressing strains may be beneficial in disease diagnosis  
202 and treatment.

203

#### 204 **Acknowledgments**

205 We would like to thank Jennifer White for IRB protocol preparation, and Research & Clinical  
206 Trial Analytics, Ken Scully, and Li Mo for clinical data retrieval.

#### 207 **Funding**

208 This work was funded by National Institutes of Health (R01 AI124214-05 to W.A.P.,  
209 K23AI163368 to G.R.M., F32DK124048 to J.L.L.) and National Center for Advancing Translational  
210 Science (UL1TR003015, KL2TR003016).

#### 211 **Conflicts of Interest**

212 W.A.P. is a consultant for TechLab Inc and R.J.C and M.W.L. are TechLab Inc employees. All  
213 other authors declare no conflict of interest.

214

215

216

217

218

219

220

221

222

## 223   **References**

- 224   1.     Centers for Disease Control and Prevention. 2019. Antibiotic Resistance Threats In The  
225         United States.
- 226   2.     Bacci S, Molbak K, Kjeldsen MK, Olsen KE. 2011. Binary toxin and death after *Clostridium*  
227         difficile infection. *Emerg Infect Dis* 17:976-82.
- 228   3.     Gerding DN, Johnson S, Rupnik M, Aktories K. 2014. *Clostridium difficile* binary toxin  
229         CDT: mechanism, epidemiology, and potential clinical importance. *Gut Microbes* 5:15-  
230         27.
- 231   4.     Cowardin CA, Buonomo EL, Saleh MM, Wilson MG, Burgess SL, Kuehne SA, Schwan C,  
232         Eichhoff AM, Koch-Nolte F, Lyras D, Aktories K, Minton NP, Petri WA, Jr. 2016. The  
233         binary toxin CDT enhances *Clostridium difficile* virulence by suppressing protective  
234         colonic eosinophilia. *Nat Microbiol* 1:16108.
- 235   5.     Fang FC, Polage CR, Wilcox MH. 2017. Point-Counterpoint: What Is the Optimal  
236         Approach for Detection of *Clostridium difficile* Infection? *J Clin Microbiol* 55:670-680.
- 237   6.     Koo HL, Van JN, Zhao M, Ye X, Revell PA, Jiang ZD, Grimes CZ, Koo DC, Lasco T, Kozinetz  
238         CA, Garey KW, DuPont HL. 2014. Real-time polymerase chain reaction detection of  
239         asymptomatic *Clostridium difficile* colonization and rising *C. difficile*-associated disease  
240         rates. *Infect Control Hosp Epidemiol* 35:667-73.
- 241   7.     Moehring RW, Lofgren ET, Anderson DJ. 2013. Impact of change to molecular testing for  
242         *Clostridium difficile* infection on healthcare facility-associated incidence rates. *Infect*  
243         Control Hosp Epidemiol 34:1055-61.

- 244 8. Polage CR, Gyorke CE, Kennedy MA, Leslie JL, Chin DL, Wang S, Nguyen HH, Huang B,  
245 Tang YW, Lee LW, Kim K, Taylor S, Romano PS, Panacek EA, Goodell PB, Solnick JV,  
246 Cohen SH. 2015. Overdiagnosis of Clostridium difficile Infection in the Molecular Test  
247 Era. JAMA Intern Med 175:1792-801.
- 248 9. Dallal RM, Harbrecht BG, Boujoukas AJ, Sirio CA, Farkas LM, Lee KK, Simmons RL. 2002.  
249 Fulminant Clostridium difficile: an underappreciated and increasing cause of death and  
250 complications. Ann Surg 235:363-72.
- 251 10. Polage CR, Chin DL, Leslie JL, Tang J, Cohen SH, Solnick JV. 2012. Outcomes in patients  
252 tested for Clostridium difficile toxins. Diagn Microbiol Infect Dis 74:369-73.
- 253 11. Barbut F, Gariazzo B, Bonne L, Lalande V, Burghoffer B, Luiuz R, Petit JC. 2007. Clinical  
254 features of Clostridium difficile-associated infections and molecular characterization of  
255 strains: results of a retrospective study, 2000-2004. Infect Control Hosp Epidemiol  
256 28:131-9.
- 257 12. Berry CE, Davies KA, Owens DW, Wilcox MH. 2017. Is there a relationship between the  
258 presence of the binary toxin genes in Clostridium difficile strains and the severity of C.  
259 difficile infection (CDI)? Eur J Clin Microbiol Infect Dis 36:2405-2415.
- 260 13. Carman RJ, Daskalovitz HM, Lyerly MW, Davis MY, Goodykoontz MV, Boone JH. 2018.  
261 Multidrug resistant Clostridium difficile ribotype 027 in southwestern Virginia, 2007 to  
262 2013. Anaerobe 52:16-21.
- 263 14. Carman RJ, Stevens AL, Lyerly MW, Hiltonsmith MF, Stiles BG, Wilkins TD. 2011.  
264 Clostridium difficile binary toxin (CDT) and diarrhea. Anaerobe 17:161-5.

- 265 15. Kozich JJ, Westcott SL, Baxter NT, Highlander SK, Schloss PD. 2013. Development of a  
266 dual-index sequencing strategy and curation pipeline for analyzing amplicon sequence  
267 data on the MiSeq Illumina sequencing platform. *Appl Environ Microbiol* 79:5112-20.
- 268 16. Callahan BJ, McMurdie PJ, Rosen MJ, Han AW, Johnson AJ, Holmes SP. 2016. DADA2:  
269 High-resolution sample inference from Illumina amplicon data. *Nat Methods* 13:581-3.
- 270 17. Pruesse E, Quast C, Knittel K, Fuchs BM, Ludwig W, Peplies J, Glockner FO. 2007. SILVA: a  
271 comprehensive online resource for quality checked and aligned ribosomal RNA  
272 sequence data compatible with ARB. *Nucleic Acids Res* 35:7188-96.
- 273 18. McMurdie PJ, Holmes S. 2013. phyloseq: an R package for reproducible interactive  
274 analysis and graphics of microbiome census data. *PLoS One* 8:e61217.
- 275 19. McDonald LC, Gerding DN, Johnson S, Bakken JS, Carroll KC, Coffin SE, Dubberke ER,  
276 Garey KW, Gould CV, Kelly C, Loo V, Shaklee Sammons J, Sandora TJ, Wilcox MH. 2018.  
277 Clinical Practice Guidelines for Clostridium difficile Infection in Adults and Children: 2017  
278 Update by the Infectious Diseases Society of America (IDSA) and Society for Healthcare  
279 Epidemiology of America (SHEA). *Clin Infect Dis* 66:e1-e48.
- 280 20. Kamboj M, Brite J, McMillen T, Robilotti E, Herrera A, Sepkowitz K, Babady NE. 2018.  
281 Potential of real-time PCR threshold cycle (CT) to predict presence of free toxin and  
282 clinically relevant C. difficile infection (CDI) in patients with cancer. *J Infect* 76:369-375.
- 283 21. Boone JH, DiPersio JR, Tan MJ, Salstrom SJ, Wickham KN, Carman RJ, Totty HR, Albert  
284 RE, Lyerly DM. 2013. Elevated lactoferrin is associated with moderate to severe  
285 Clostridium difficile disease, stool toxin, and O27 infection. *Eur J Clin Microbiol Infect Dis*  
286 32:1517-23.

287 22. Milani C, Ticinesi A, Gerritsen J, Nouvenne A, Lugli GA, Mancabelli L, Turrone F, Duranti S,  
288 Mangifesta M, Viappiani A, Ferrario C, Maggio M, Lauretani F, De Vos W, van Sinderen  
289 D, Meschi T, Ventura M. 2016. Gut microbiota composition and Clostridium difficile  
290 infection in hospitalized elderly individuals: a metagenomic study. Sci Rep 6:25945.

291 23. van Nood E, Vrieze A, Nieuwdorp M, Fuentes S, Zoetendal EG, de Vos WM, Visser CE,  
292 Kuijper EJ, Bartelsman JF, Tijssen JG, Speelman P, Dijkgraaf MG, Keller JJ. 2013.  
293 Duodenal infusion of donor feces for recurrent Clostridium difficile. N Engl J Med  
294 368:407-15.

295 24. Han SH, Yi J, Kim JH, Lee S, Moon HW. 2019. Composition of gut microbiota in patients  
296 with toxigenic Clostridioides (Clostridium) difficile: Comparison between subgroups  
297 according to clinical criteria and toxin gene load. PLoS One 14:e0212626.

298  
299  
300  
301  
302  
303  
304  
305  
306  
307  
308  
309  
310  
311  
312  
313  
314  
315  
316  
317  
318

319 **Table 1. Patient Characteristics**

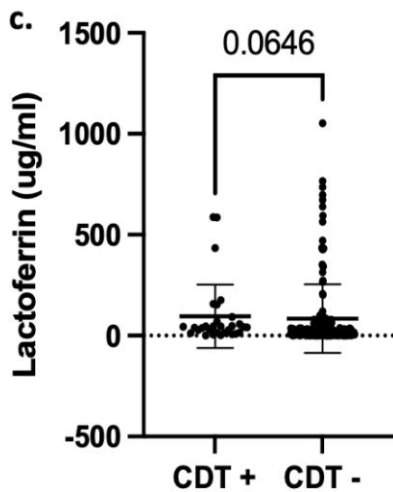
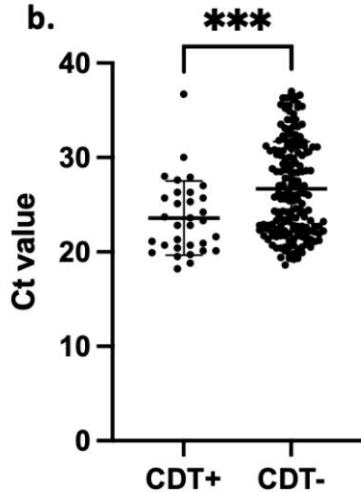
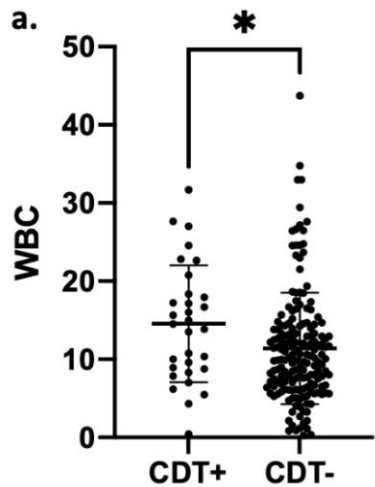
320 **Figure 1. Patients testing positive for CDT had increased bacterial burden, white blood cell**  
321 **count and intestinal inflammation.** (a) Patients with CDT-expressing strains had higher white  
322 blood cell counts than patients with non-CDT expressing strains ( $p=0.0129$ ). (b) CDT positive  
323 patients had lower Ct values than CDT negative patients, indicating increased bacterial burden  
324 ( $p=0.0008$ ). (c) CDT positive patients had elevated lactoferrin compared to CDT negative  
325 patients, although not statistically significant ( $p=0.0646$ )

326 **Figure 2. CDT positive patients had increased hospital and ICU stays.** (a) Patients with CDT  
327 detected in their stool had longer stays in the hospital, with an average stay of 18 days  
328 compared to 11.5 days for CDT negative patients. ( $p=0.0468$ ). (b) CDT positive patients had  
329 longer stays in the ICU ( $p=0.0083$ ).

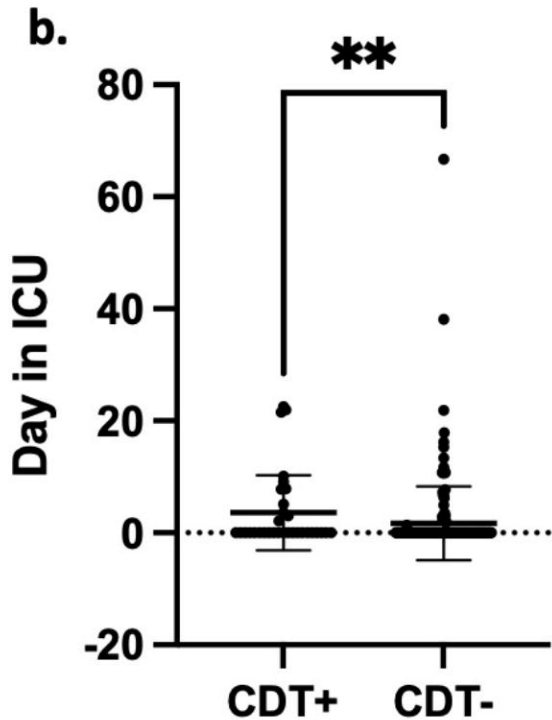
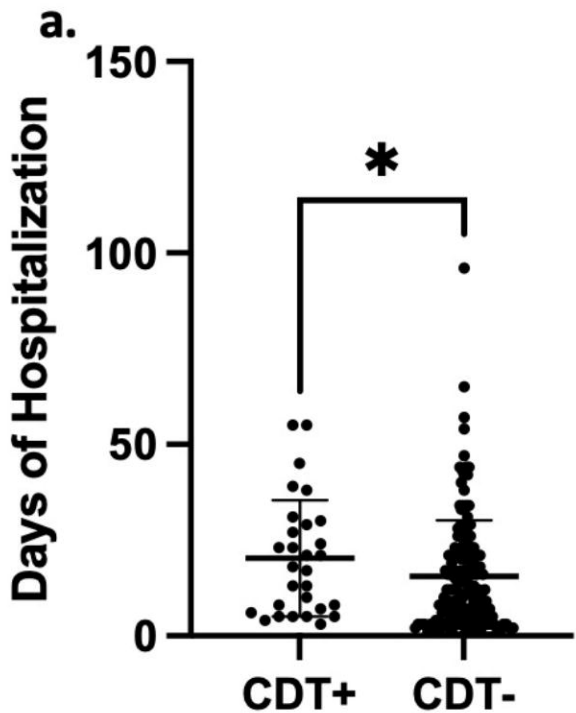
330 **Figure 3. No differences in gut microbiome diversity between CDT positive and negative**  
331 **patients** (a) There was no significant difference in Simpson Diversity Index between CDT  
332 positive and negative patients ( $p=0.26$ ). (b) Shannon Diversity Index was slightly higher in CDT  
333 negative patients although not statistically significant ( $p=0.16$ ).

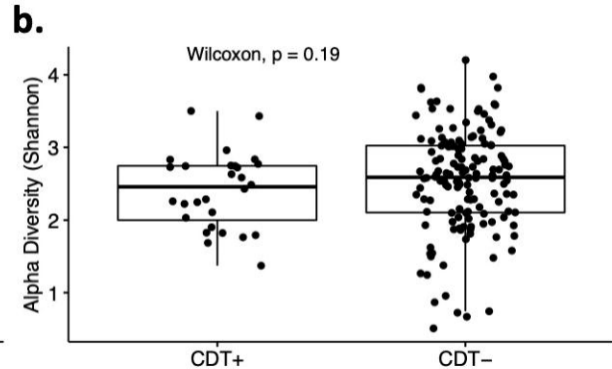
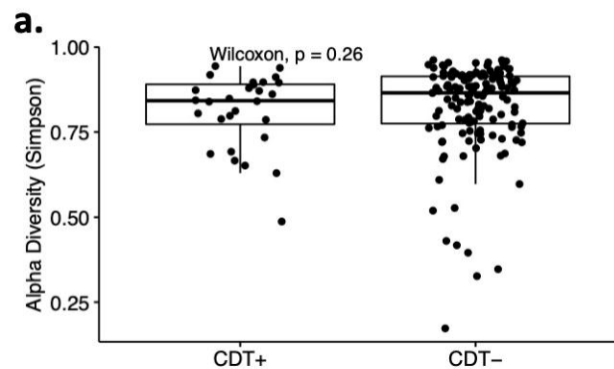
334 **Supplemental Figure 1. Higher bacterial burden in CDT positive, toxin A/B positive patients**  
335 **compared to patients positive for CDT and negative for toxin A/B.** CDT and toxin A/B positive  
336 ( $n=23$ ) had lower Ct values compared to CDT positive, toxin A/B negative patients ( $p=0.0096$ )

337  
338  
339  
340  
341  
342  
343  
344









Characteristic	CDT+ (32)	CDT- (183)	p value
<b>Age</b> (mean, SD)	64.7 (16.2)	59.0 (17.0)	0.1005
<b>Sex</b> (No, %)*			0.9258
Female	16 (50)	85 (50.1)	
Male	16 (50)	82 (49.9)	
<b>Toxin A/B+</b> (No, %)	23 (71.9)	72 (39.3)	<b>0.0006</b>
<b>WBC &gt; 15,000/<math>\mu</math>l</b> (No, %) *	14 (45.2)	34 (19.5)	<b>0.0019</b>
<b>Admitted to ICU</b> (No, %) *	11 (34.4)	28 (15.6)	<b>0.0113</b>
<b>Deceased within 90 days of diagnosis</b> (No, %) *	7 (23.3)	16 (9.6)	<b>0.0320</b>

\*Some clinical data missing, percentage based on patients with data available