

1 **Title:** Airway-specific autoantibodies identify a subset of patients with fibrotic interstitial lung disease

2

3 **Authors:** Karim Boustani^{1,2}, Poonam Ghai¹, Rachele Invernizzi¹, Richard J. Hewitt^{1,3}, Toby M.

4 Maher^{1,3,4}, Quan-Zhen Li⁵, Philip L. Molyneaux^{1,3*}, James A. Harker^{1,2*}

5

6 **Affiliations:**

7 ¹National Heart and Lung Institute, Imperial College London, UK

8 ²Asthma UK Centre in Allergic Mechanisms of Asthma

9 ³Royal Brompton Hospital, UK

10 ⁴Hastings Centre for Pulmonary Research and Division of Pulmonary, Critical Care and Sleep Medicine,

11 Keck School of Medicine, University of Southern California, Los Angeles, USA

12 ⁵Department of Immunology & Internal Medicine, Microarray and Immune Phenotyping Core Facility,

13 University of Texas Southwestern Medical Centre, USA

14

15 *denotes equal contribution

16

17 **Corresponding author:** Dr. James A. Harker (j.harker@imperial.ac.uk)

18

19

20

21 **Abstract**

22

23 **Background**

24 Fibrotic interstitial lung disease (fILD) has previously been associated with the presence of
25 autoantibody. While studies have focused on systemic autoimmunity, the role of local autoantibodies in
26 the airway remains unknown. We therefore extensively characterised the airway and peripheral
27 autoantibody profiles in patients with fILD and assessed association with disease severity and outcome.

28

29 **Methods**

30 Bronchoalveolar lavage (BAL) was collected from a cohort of fILD patients and total airway antibody
31 concentrations were quantified. An autoantigen microarray was used to measure IgG and IgA
32 autoantibodies against 124 autoantigens in BAL from 40 idiopathic pulmonary fibrosis (IPF), 20 chronic
33 hypersensitivity pneumonitis (CHP), 20 connective tissue disease-associated ILD (CTD-ILD) patients
34 and 20 controls.

35

36 **Results**

37 A subset of patients with fILD but not healthy controls had a local autoimmune signature in their airways
38 that was not present systemically, regardless of disease. The proportion of patients with IPF with a local
39 autoantibody signature was comparable to that of CTD-ILD, which has a known autoimmune pathology,
40 identifying a potentially novel subset of patients. The presence of an airway autoimmune signature was
41 not associated with reduced survival probability or changes in lung function in the cohort as a whole.
42 Patients with IPF had increased airway total IgA and IgG1 while subjects with CHP had increased
43 airway IgA, IgG1 and IgG4. In patients with CHP, increased airway total IgA was associated with
44 reduced survival probability.

45

46 **Conclusion**

47 The presence of airway autoantibodies identifies a unique subset of patients with fILD and the
48 mechanisms by which these autoantibodies contribute to disease requires further investigation.

49

50 Introduction

51

52 Interstitial lung disease (ILD) is an umbrella term for a group of devastating, chronic lung diseases
53 including idiopathic pulmonary fibrosis (IPF), chronic hypersensitivity pneumonitis (CHP) and
54 connective tissue disease-associated ILD (CTD-ILD)¹. Each of these diseases has a unique aetiology
55 and, in the case of IPF which is the most common form of ILD, the cause remains unknown. This is a
56 growing problem in the UK, with more than 5,000 cases diagnosed annually and despite therapy a 5-
57 year survival of approximately 20%². Despite differing aetiologies and triggers there is growing evidence
58 of shared pathogenesis across the spectrum of fibrotic interstitial lung disease (fILD). These diseases
59 arise in response to microinjuries to the respiratory epithelium, which trigger an aberrant wound healing
60 response in genetically susceptible aged individuals. The immune system is known to play a role in the
61 pathogenesis of both CHP, largely driven by known environmental antigens, and CTD-ILD, driven by
62 self-antigens. The role of the immune system in the pathogenesis of IPF is however less clear. Recent
63 work has highlighted changes in the lung immune response, especially within the macrophage
64 population, and their correlation with disease outcome, but a source of antigen stimulation has yet to
65 be identified³.

66

67 Autoimmunity occurs as a result of a breakdown of tolerance within the adaptive immune cell
68 compartment, resulting in the generation of antibodies by plasma cells which target self-antigens. The
69 presence of circulating autoantibodies is used to diagnose CTD-ILD clinically. These circulating
70 autoantibodies are often against nuclear components such as Ro, La, Jo1, Scl70 and double-stranded
71 DNA (dsDNA)⁴⁻⁶. Associations between circulating autoantibodies and disease outcome are not
72 however limited to CTD-ILD, and other forms of fILD, such as CHP as well as other chronic lung
73 diseases such as chronic obstructive pulmonary disease (COPD) have been shown to have similar
74 associations⁶⁻¹⁰. Supporting a role for antibody mediated immunity in the pathogenesis of some patients
75 with pulmonary fibrosis, Rituximab, a monoclonal antibody that specifically depletes B cells, has also
76 been shown to be beneficial in a subset of patients with either CTD-ILD or CHP¹¹⁻¹³. Much less is known,
77 however, about the contribution of the antibody response to IPF, although a small scale trial of rituximab
78 in combination with plasmapheresis showed some benefit during acute exacerbations of IPF¹⁴. Further
79 evidence for humoral dysregulation being a contributor to disease pathology comes from the

80 identification of multiple circulating autoantibodies against various components of alveolar epithelial
81 cells, extracellular matrix components such as periplakin and vimentin, and other lung-specific proteins
82 such as BPIFB1^{15-7, 15-20}. It is not well understood how these autoantibodies drive pathology but
83 autoantibodies targeting proteins expressed almost exclusively in the lung parenchyma such as
84 KCNRG and BPIFB1 have been identified in patients with fibrotic lung disease^{18, 21, 22}. This suggests
85 that autoantibodies against proteins expressed in lung tissue may induce damage and, subsequently,
86 inflammation and aberrant wound repair resulting in fibrosis.

87

88 In this study, we sought to determine whether there is a local autoimmune signature in the airways of
89 patients with fILD and whether the presence of airway autoantibodies could be used to predict disease
90 outcome. We demonstrate that there is a significant increase in airway IgA, IgG1 and IgG4 in IPF, and
91 increased IgA and IgG4 in CHP. A subset of patients with fILD had distinct airway autoantibody profiles,
92 the presence of which is not associated with autoantibodies in the circulation. These findings present a
93 novel observation that there is a distinct airway autoantibody signature in a subset of patients with fILD
94 that is not present in healthy individuals. Further work will be required to assess the implications of
95 these findings in clinical practice and elucidate the pathological role airway autoantibodies may play.

96

97 **Methods**

98

99 **Patients and sampling**

100 Patients undergoing routine diagnostic bronchoscopy at the Interstitial Lung Disease Unit in the Royal
101 Brompton Hospital between May 2014 and December 2019 were recruited prospectively. The study
102 was approved by the East London and the City Research Ethics Committee (15-LO-1399) and the
103 South Central Hampshire Research Ethics Committee (15/SC/0101). Written informed consent was
104 obtained from all subjects. Subjects with histories of upper or lower respiratory tract infections, antibiotic
105 use in the prior three months or history of acute exacerbations were excluded. Bronchoscopy with
106 bronchoalveolar lavage (BAL) was performed as described previously^{23, 24}.

107

108 **BAL processing**

109 BAL samples were passed through a 70µm sterile strainer and centrifuged (700g; 5 min; 4°C).
110 Supernatants were stored at -80°C for further use.

111

112 **ELISAs**

113 Total antibody ELISAs for IgA, IgG, IgM, IgG1, IgG2, IgG3 and IgG4 were carried out on BAL
114 supernatants according to manufacturer's instructions (Invitrogen, UK). Vitronectin and Collagen V-
115 specific ELISAs were developed based on a standard sandwich ELISA assay. Plates were coated with
116 either 0.625µg/ml of recombinant human vitronectin (PromoCell, Germany) or 0.1µg/ml of human
117 collagen V (Sigma-Aldrich, UK). Serial dilutions of BAL and plasma were performed starting at neat for
118 BAL and 1:20 for plasma. Plates were incubated with HRP-conjugated anti-human IgG or IgA antibodies
119 at a 1:4000 dilution (SouthernBiotech, USA) and developed with TMB. Absorbance at 450nm was
120 measured using a SpectraMax i3x plate reader (Molecular Devices, USA).

121

122 **Autoantigen array**

123 IgA and IgG autoantibody reactivities against a panel of 124 autoantigens were measured in 50µl of
124 BAL using an array developed by the University of Texas Southwestern Medical Center^{8, 25}. Briefly,
125 samples were incubated with autoantigens on microarray slides before being incubated with secondary
126 fluorophore-conjugated anti-human IgG or IgA antibodies. Following detection, images were analysed

127 by Genepix Pro 6.0 (Molecular Devices, USA). Average net fluorescence intensities (NFI) and signal-
128 to-noise ratios (SNR) were calculated by subtracting negative control (PBS) fluorescence values from
129 sample fluorescence values.

130

131 **Statistical analysis**

132 Statistical analyses were performed using Prism software (GraphPad Software). Kaplan-Meier analysis
133 was used to compare mortality between subjects with or without airway autoantibodies. Both univariate
134 and multivariate Cox Proportional Hazard regression analyses were carried out in R. Heatmaps were
135 generated using Morpheus (Broad Institute, MA, USA).

136

137 **Results**

138

139 **IgA, IgG1 and IgG4 antibodies are increased in IPF and CHP airways**

140 Given that previous studies have shown alterations in both circulating and airway total antibody in fILD,
141 we first investigated whether antibody concentrations were elevated in patients with IPF and CHP
142 compared to healthy controls¹⁵. A significant increase in serum IgG but not IgA or IgM was observed in
143 patients with IPF compared to healthy controls (Figure 1Ai). In the BAL we observed a statistically
144 significant increase in IgA in both patients with IPF and CHP compared to healthy controls, as well as
145 an increase in IgG in patients with CHP (Figure 1B). There also appeared to be a trend toward increase
146 in IgG in patients with IPF compared to healthy controls (Figure 1B). Analysis of IgG isotypes showed
147 that IgG1 and IgG4 concentrations were significantly increased in patients with CHP and IgG1 was also
148 significantly increased in patients with IPF compared to healthy controls (Figure 1C). Taken together,
149 these data suggest that increases in airway IgG and IgA are features of both IPF and CHP.

150

151 We performed additional analysis to determine whether increases in airway antibodies are associated
152 with disease severity and predicted survival. Although there were weak negative correlations between
153 airway antibody and lung function in patients with IPF and CHP, this did not influence predicted survival
154 (Figures S1A, S1B, S1C). However, in patients with CHP, higher airway IgA concentrations were
155 associated with significantly reduced survival probability ($p=0.0082$) (Figure S1D). Collectively, these
156 data suggest that airway antibody concentrations may be associated with poorer disease outcome in
157 some forms of fILD.

158

159 **A distinct autoimmune signature is present in a subset of patients with fILD**

160 Because IgA and IgG were increased in the airways, we hypothesised this could be linked to increased
161 IgA and IgG autoantibodies in the airways of patients with fILD. Hence, we performed IgG and IgA
162 autoantibody arrays on 100 BAL samples, which included patients with IPF (n=40), CHP (n=20) and
163 CTD (n=20) as well as healthy and non-disease controls (n=20). Demographic and clinical features are
164 shown in Table 1. Notably, we were able to identify two distinct subsets of patients, those with
165 detectable airway IgG (Figure 2A) and IgA (Figure 2B) autoantibodies and those without by hierarchical
166 clustering. Within fILD patients who were positive for airway autoantibodies, we were able to identify

167 IgG and IgA autoantibodies against a range of nuclear proteins (e.g. dsDNA, chromatin, nucleosome,
168 POLB, ssRNA and ssDNA), extracellular matrix-associated (e.g. Collagen I-VI, heparin and elastin) and
169 epithelial-associated proteins (e.g. vimentin and vitronectin) (Figures 2A; 2B). IgG and IgA
170 autoantibodies were also detectable in two non-disease controls, however one of these was a patient
171 with COPD and the other was a patient with bronchiectasis (Figures 2A; 2B). Both of these conditions
172 have been previously associated with presence of airway autoantibodies and those samples taken from
173 healthy patients had no detectable autoantibodies^{8, 9, 26-28}.

174
175 We next asked whether the patients with increased IgG autoantibodies were also those with increased
176 IgA autoantibodies. We observed a statistically significant correlation between IgG and IgA
177 autoantibody scores (Figure 2C). Approximately half of the patients with IPF, CHP and CTD had a
178 detectable autoantibody signature in their airways (Figure 2D).

179
180 Patients who tested positive in the autoantigen array for antibodies against collagen V and vitronectin,
181 both of which are expressed in lung tissue, also had significantly increased titers of anti-collagen V and
182 anti-vitronectin autoantibodies in the airways when determined independently by ELISA (Figures 2E;
183 S2A)^{29, 30}. Importantly, no difference was observed in serum titers of anti-collagen V and anti-vitronectin
184 antibodies between the AutoAb- and AutoAb+ patients or healthy controls, suggesting that the presence
185 of autoantibodies in these patients was unique to the airways (Figures 2F; S2B).

186
187 **Presence of lower airway autoantibodies is not associated with disease progression and**
188 **survival**

189 Finally, we wanted to determine whether the presence of airway autoantibodies is associated with more
190 severe disease. Principal components analysis with k means clustering based on IgG autoantibody
191 scores was performed on all patients with fILD but not healthy controls and identified 3 distinct clusters
192 of patients (Figure 3A). Clusters 1 and 2 corresponded to subjects who had positive autoantibody signal
193 (Figure 3A). There was no difference in lung function between any of the clusters (Figure 3B). Cluster
194 3 contained a higher percentage of progressors, as defined by patients who had a decline in FEV1
195 greater than 10% (Figure 3C). Cluster 1 had an increased percentage of patients with IPF (56.25%)
196 and CTD (25%) compared to clusters 2 and 3 while clusters 2 and 3 had increased proportions of

197 patients with CHP (40.1% and 33.3% respectively) (Figure 3D). Overall, there was no difference in
198 survival probability between any of the clusters (Figure 3E).

199

200 To identify the top putative autoantigens responsible for variance in PC1, percentage contributions were
201 analysed. Fibrinogen IV, Fibrinogen S, Ribophosphoprotein P1, PM.Scl.75, Vitronectin and RoSSA
202 accounted for the highest contribution to variance in PC1 (Figure S3A). Stratification of patients based
203 on presence or absence of autoantibodies against these antigens showed no difference in survival
204 probability (Figure S3B). Similarly, for PC2, chondroitin sulfate C, nup 62, heparin, ssRNA, decorin
205 bovine and collagen II had the highest contribution to variance (Figure S3C). Stratification of patients
206 based on presence or absence of these autoantibodies show no significant difference in survival
207 probability (Figure S3D). Taken together, these data suggest that while the airways of approximately
208 half of fILD patients are enriched for autoantibodies against cellular and nuclear antigens, these do not
209 associate with disease severity and outcome.

210

211 Discussion

212

213 The presence of circulating autoantibodies as well as their impact on disease outcome in patients with
214 interstitial lung disease has been widely reported. Here we sought to address whether patients with
215 interstitial lung disease have a local airway autoimmune signature and whether this could be used as a
216 predictor of disease severity and outcome. We show that IgA, IgG1 and IgG4 are increased in the
217 airways of patients with fILD and identify a subset of patients with local but not systemic autoantibodies.

218

219 Although patients with IPF had modest increases in serum IgG, patients with IPF and CHP both had
220 increases in airway IgG and IgA. In agreement with a previous study, total airway antibody was not
221 associated with worse predicted survival¹⁵. Specifically, IgG1 was increased in IPF airways while IgG4
222 was increased in IPF and CHP airways. Although IgG is predominantly involved in systemic responses,
223 it is also the most abundant antibody class in the lower respiratory tract^{31, 32}. Unlike IgA and IgM, both
224 of which are transcytosed via pIgR, IgG is transcytosed bidirectionally via the action of the neonatal Fc
225 receptor (FcRn)³³. IgG1 is involved in pro-inflammatory responses including complement activation
226 while IgG4 suppresses immune activation and promotes tolerance³⁴. IgA was also increased in IPF and
227 CHP airways. In the gut, IgA is responsible for maintaining homeostatic relationships with commensals
228 in the GI tract through immune exclusion³⁵. However, its role in the lower respiratory tract remains to
229 be defined. In the gut, both IgG1 and IgA play important roles in maintaining commensals^{31, 34}. It has
230 previously been reported that patients with IPF and CHP have increases in lower respiratory tract
231 bacterial burdens^{23, 36-38}. It is therefore possible that the increase in local IgA and IgG1 in the airways
232 of fILD patients are a compensation mechanism for the enhanced bacterial burden observed in these
233 patients.

234

235 Over the last decade, studies have begun to explore the role of autoantigens in fILD pathology.
236 However, the relationship between systemic autoimmune disease and interstitial lung disease remains
237 poorly understood. One of the first circulating epithelial autoantibodies to be identified in pulmonary
238 fibrosis was anti-cytokeratin 8 and this provided evidence to support the hypothesis of autoantibody-
239 mediated lung injury³⁹. Since then, multiple circulating autoantibodies have been reported against

240 human epithelial and extracellular matrix proteins including annexin 1, heat shock protein 70, vimentin
241 and periplakin, some of these correlating with disease severity^{4, 5, 15, 20, 40}.

242

243 We confirm and extend previous analyses of autoantibodies in fILD and show for the first time by large-
244 scale array that autoantibodies against a range of matrix components are also detectable locally within
245 the airways of a subset of patients with fibrotic lung disease. This data suggests that there is a specific
246 local autoimmune signature in some patients with fibrotic lung disease. Importantly, these data also
247 support a link between autoimmunity and tissue damage and fibrosis. Early studies showed that
248 patients with fibrosing alveolitis have increased concentrations of IgG autoantibodies to proteins
249 expressed within lung tissue⁴¹. Shum and colleagues elegantly showed that autoantibody targeting of
250 BPIFB1, a protein expressed exclusively in the lung tissue, results in the development of lung fibrosis
251 in a murine model^{18, 22}.

252

253 Here, we show that patients have autoantibodies against a range of proteins expressed within the lung
254 and some which may be associated with tissue damage, such as nuclear proteins. Indeed,
255 autoantibodies against some of the antigens in our array such as vimentin have been previously
256 reported in fILDs^{4, 16}. This broad pattern of autoantibody specificity has also been reported in the serum
257 from severe COPD patients and was particularly associated with emphysema, suggesting that
258 autoantibody profiles differ between disease groups⁸. Interestingly, most of the autoantibodies we
259 present here are against proteins that are often upregulated in fILD. Vitronectin is significantly increased
260 in the BAL of patients with ILD³⁰. Similarly, many of the components of the extracellular matrix such as
261 the collagen proteins, particularly collagen I and V are overexpressed in the wound repair process.
262 Collagen V plays a central role in the formation of fibrillar collagen mesh and is also involved in
263 regulating the fibre size⁴². In parenchymal fibrosis, collagen V is highly overexpressed in IPF lungs and
264 much of the morphological disorganisation of fibrillar collagen can be attributed to this aberrant
265 expression of collagen V^{19, 42}. Interestingly, it has been reported that 40-60% of patients with IPF have
266 autoimmune responses against collagen V, similar to the proportions observed in the current study¹⁹. It
267 is possible that increased expression of collagen V in lung fibrosis results leads to an aberrant humoral
268 response against an otherwise innocuous protein. A recent phase I clinical trial involving oral

269 immunotherapy with bovine collagen V in patients with IPF led to stabilised of lung function and reduced
270 matrix metalloproteinase expression, possibly through the induction of humoral tolerance²⁹.

271

272 The site of autoantibody production in fILD remains elusive. The presence of a local airway but not
273 systemic autoimmune signature suggests that the production of autoantibodies may be occurring
274 locally. Early studies by Rangel-Moreno and colleagues showed that autoantibody production can occur
275 locally within lymphocyte aggregates within fibrotic lung tissue⁴³. Specifically, they showed that
276 autoantibodies against both vimentin and citrullinated proteins localise around B cell aggregates within
277 the fibrotic lung tissue^{16, 43}. Indeed, B cell aggregates are observed in biopsy tissue from human IPF
278 lungs⁴⁴. Local autoantibody production is also supported by tissue-resident B cells in other organs such
279 as the upper respiratory tract and synovia in chronic rhinosinusitis with nasal polyps and rheumatoid
280 arthritis, respectively^{45, 46}. It is important to note that lymphoid aggregates are also not observed in all
281 patients with RA-associated lung fibrosis⁴³. This may explain why only some patients develop a local
282 autoimmune signature. However, our findings suggest that the link between local autoantibody and
283 disease progression cannot be assumed and may also depend on other factors such as time of
284 sampling. One of the main limitations of the study is that the median follow-up time is 3 years and that
285 may limit our ability to detect differences in survival between those patients with and without local
286 autoantibodies. However, there is no signal of rapid deterioration.

287

288 We have demonstrated for the first time that there is a broad spectrum of autoantibodies present locally
289 within the airways of patients with fILD that is not present in the circulation, supporting our hypothesis
290 that local antibody-mediated tissue damage can drive pathology of lung fibrosis. Subsequent
291 investigations should therefore aim to define the role of these autoantibodies in tissue damage.
292 Ultimately, if humoral dysregulation is a key player in severe disease then a number of targeted
293 therapies may be more beneficial to outcome than non-specific treatments.

294 **Acknowledgements**

295 This work was funded by a Rosetrees Seed Fund to PLM and JAH (A2172). KB was funded by an

296 Asthma UK studentship to JAH and PLM as part of the Asthma UK centre in Allergic Mechanisms of

297 Asthma (AUK-BC-2015-01).

298 **References**

299

- 300 1. Lederer DJ, Martinez FJ. Idiopathic Pulmonary Fibrosis. *New England Journal of Medicine*
301 2018; **378**: 1811-1823.
- 302
- 303 2. Kreuter M, Bonella F, Wijsenbeek M, Maher TM, Spagnolo P. Pharmacological Treatment of
304 Idiopathic Pulmonary Fibrosis: Current Approaches, Unsolved Issues, and Future
305 Perspectives. *Biomed Res Int* 2015; **2015**: 329481.
- 306
- 307 3. Allden SJ, Ogger PP, Ghai P, McErlean P, Hewitt R, Toshner R *et al*. The Transferrin Receptor
308 CD71 Delineates Functionally Distinct Airway Macrophage Subsets during Idiopathic
309 Pulmonary Fibrosis. *Am J Respir Crit Care Med* 2019; **200**(2): 209-219.
- 310
- 311 4. Li FJ, Suroliya R, Li H, Wang Z, Kulkarni T, Liu G *et al*. Autoimmunity to Vimentin Is Associated
312 with Outcomes of Patients with Idiopathic Pulmonary Fibrosis. *The Journal of Immunology*
313 2017; **199**: 1596-1605.
- 314
- 315 5. Kahloon RA, Xue J, Bhargava A, Csizmadia E, Otterbein L, Kass DJ *et al*. Patients with
316 idiopathic pulmonary fibrosis with antibodies to heat shock protein 70 have poor prognoses.
317 *American Journal of Respiratory and Critical Care Medicine* 2013; **187**: 768-775.
- 318
- 319 6. Feghali-Bostwick CA, Wilkes DS. Autoimmunity in Idiopathic Pulmonary Fibrosis Are
320 Circulating Autoantibodies Pathogenic or Epiphenomena? *American Journal of Respiratory*
321 *and Critical Care Medicine*, vol. 183, 2011, pp 691-692.
- 322
- 323 7. Lee JS, Kim EJ, Lynch KL, Elicker B, Ryerson CJ, Katsumoto TR *et al*. Prevalence and clinical
324 significance of circulating autoantibodies in idiopathic pulmonary fibrosis. *Respiratory Medicine*
325 2013; **107**: 249-255.
- 326
- 327 8. Packard TA, Li QZ, Cosgrove GP, Bowler RP, Cambier JC. COPD is associated with production
328 of autoantibodies to a broad spectrum of self-antigens, correlative with disease phenotype.
329 *Immunologic Research* 2013; **55**: 48-57.
- 330
- 331 9. Feghali-Bostwick CA, Gadgil AS, Otterbein LE, Pilewski JM, Stoner MW, Csizmadia E *et al*.
332 Autoantibodies in patients with chronic obstructive pulmonary disease. *American Journal of*
333 *Respiratory and Critical Care Medicine* 2008; **177**: 156-163.
- 334
- 335 10. Feghali-Bostwick CA, Tsai CG, Valentine VG, Kantrow S, Stoner MW, Pilewski JM *et al*.
336 Cellular and Humoral Autoreactivity in Idiopathic Pulmonary Fibrosis. *The Journal of*
337 *Immunology* 2007; **179**: 2592-2599.
- 338
- 339 11. Keir GJ, Maher TM, Ming D, Abdullah R, de Lauretis A, Wickremasinghe M *et al*. Rituximab in
340 severe, treatment-refractory interstitial lung disease. *Respirology* 2014; **19**(3): 353-359.
- 341
- 342 12. Lota HK, Keir GJ, Hansell DM, Nicholson AG, Maher TM, Wells AU *et al*. Novel use of rituximab
343 in hypersensitivity pneumonitis refractory to conventional treatment. *Thorax* 2013; **68**(8): 780-
344 781.
- 345
- 346 13. Keir GJ, Maher TM, Hansell DM, Denton CP, Ong VH, Singh S *et al*. Severe interstitial lung
347 disease in connective tissue disease: Rituximab as rescue therapy. *European Respiratory*
348 *Journal* 2012; **40**: 641-648.
- 349
- 350 14. Saul M, Raval JS, Duncan SR, Valentine VG, Xue J, Donahoe M *et al*. Autoantibody-Targeted
351 Treatments for Acute Exacerbations of Idiopathic Pulmonary Fibrosis. *Plos One* 2015; **10**:
352 e0127771.
- 353

- 354 15. Mills R, Mathur A, Nicol LM, Walker JJ, Przybylski AA, Mackinnon AC *et al.* Intrapulmonary
355 Autoantibodies to HSP72 Are Associated with Improved Outcomes in IPF. *J Immunol Res*
356 2019; **2019**: 1845128.
357
- 358 16. Kinloch AJ, Kaiser Y, Wolfgeher D, Ai J, Eklund A, Clark MR *et al.* In Situ Humoral Immunity to
359 Vimentin in HLA-DRB1*03(+) Patients With Pulmonary Sarcoidosis. *Front Immunol* 2018; **9**:
360 1516.
361
- 362 17. Hoyne GF, Elliott H, Mutsaers SE, Prêle CM. Idiopathic pulmonary fibrosis and a role for
363 autoimmunity. *Immunology and Cell Biology* 2017; **95**: 577-583.
364
- 365 18. Shum AK, Alimohammadi M, Tan CL, Cheng MH, Metzger TC, Law CS *et al.* BPIFB1 is a lung-
366 specific autoantigen associated with interstitial lung disease. *Science Translational Medicine*
367 2013; **5**.
368
- 369 19. Vittal R, Mickler EA, Fisher AJ, Zhang C, Rothhaar K, Gu H *et al.* Type V collagen induced
370 tolerance suppresses collagen deposition, TGF-beta and associated transcripts in pulmonary
371 fibrosis. *PLoS One* 2013; **8**(10): e76451.
372
- 373 20. Taillé C, Grootenboer-Mignot S, Boursier C, Michel L, Debray MP, Fagart J *et al.* Identification
374 of periplakin as a new target for autoreactivity in idiopathic pulmonary fibrosis. *American*
375 *Journal of Respiratory and Critical Care Medicine* 2011; **183**: 759-766.
376
- 377 21. Alimohammadi M, Dubois N, Skoldberg F, Hallgren A, Tardivel I, Hedstrand H *et al.* Pulmonary
378 autoimmunity as a feature of autoimmune polyendocrine syndrome type 1 and identification of
379 KCNRG as a bronchial autoantigen. *Proceedings of the National Academy of Sciences* 2009;
380 **106**: 4396-4401.
381
- 382 22. Shum AK, Devoss J, Tan CL, Hou Y, Johannes K, Gorman CSO *et al.* Identification of an
383 Autoantigen Demonstrates a Link Between Interstitial Lung Disease and a Defect in Central
384 Tolerance. *Science Translational Medicine* 2009; **1**.
385
- 386 23. Invernizzi R, Wu BG, Barnett J, Ghai P, Kingston S, Hewitt RJ *et al.* The Respiratory
387 Microbiome in Chronic Hypersensitivity Pneumonitis is Distinct from that of Idiopathic
388 Pulmonary Fibrosis. *Am J Respir Crit Care Med* 2020.
389
- 390 24. Molyneaux PL, Smith JJ, Saunders P, Chua F, Wells AU, Renzoni EA *et al.* BAL Is Safe and
391 Well Tolerated in Individuals with Idiopathic Pulmonary Fibrosis: An Analysis of the PROFILE
392 Study. *Am J Respir Crit Care Med* 2021; **203**(1): 136-139.
393
- 394 25. Zhu H, Luo H, Yan M, Zuo X, Li QZ. Autoantigen Microarray for High-throughput Autoantibody
395 Profiling in Systemic Lupus Erythematosus. *Genomics Proteomics Bioinformatics* 2015; **13**(4):
396 210-218.
397
- 398 26. Goutaki M, Pescatore AM, Singh P, Beardsmore CS, Kuehni CE. Increased prevalence of pre-
399 school wheeze is not explained by time trends in body mass index. *Eur Respir J* 2014; **44**(4):
400 1078-1082.
401
- 402 27. Low TB, Greene CM, O'Neill SJ, McElvaney NG. Quantification and evaluation of the role of
403 antielastin autoantibodies in the emphysematous lung. *Pulm Med* 2011; **2011**: 826160.
404
- 405 28. Wen L, Krauss-Etschmann S, Petersen F, Yu X. Autoantibodies in chronic obstructive
406 pulmonary disease. *Frontiers in Immunology* 2018; **9**: 1-7.
407
- 408 29. Wilkes DS, Chew T, Flaherty KR, Frye S, Gibson KF, Kaminski N *et al.* Oral immunotherapy
409 with type V collagen in idiopathic pulmonary fibrosis. *Eur Respir J* 2015; **45**(5): 1393-1402.
410
- 411 30. Pohl WR, Conlan MG, Thompson AB, Ertl RF, Romberger DJ, Mosher DF *et al.* Vitronectin in
412 bronchoalveolar lavage fluid is increased in patients with interstitial lung disease. *Am Rev*
413 *Respir Dis* 1991; **143**(6): 1369-1375.

- 414
415 31. Cerutti A, Chen K, Chorny A. Immunoglobulin Responses at the Mucosal Interface. *Annual*
416 *Review of Immunology* 2011; **29**: 273-293.
417
- 418 32. Peebles RSL, M. C.; Lichtenstein, L. M.; Hamilton, R. G. IgA, IgG and IgM quantification in
419 bronchoalveolar lavage fluids from allergic rhinitis, allergic asthmatics, and normal subjects by
420 monoclonal antibody-based immunoenzymatic assays. *Journal of Immunological Methods*
421 1995; **179**: 77-86.
422
- 423 33. Dickinson BL, Badizadegan K, Wu Z, Ahouse JC, Zhu X, Simister NE *et al.* Bidirectional FcRn-
424 dependent IgG transport in a polarized human intestinal epithelial cell line. *J Clin Invest* 1999;
425 **104**(7): 903-911.
426
- 427 34. Vidarsson G, Dekkers G, Rispens T. IgG subclasses and allotypes: from structure to effector
428 functions. *Front Immunol* 2014; **5**: 520.
429
- 430 35. Moor K, Diard M, Sellin ME, Felmy B, Wotzka SY, Toska A *et al.* High-avidity IgA protects the
431 intestine by enchainning growing bacteria. *Nature* 2017; **544**: 498-502.
432
- 433 36. Molyneaux PL, Cox MJ, Wells AU, Kim HC, Ji W, Cookson WOC *et al.* Changes in the
434 respiratory microbiome during acute exacerbations of idiopathic pulmonary fibrosis.
435 *Respiratory Research* 2017; **18**: 10-15.
436
- 437 37. Molyneaux PL, Cox MJ, Willis-Owen SAG, Mallia P, Russell KE, Russell AM *et al.* The role of
438 bacteria in the pathogenesis and progression of idiopathic pulmonary fibrosis. *American*
439 *Journal of Respiratory and Critical Care Medicine* 2014; **190**: 906-913.
440
- 441 38. O'Dwyer DN, Ashley SL, Gurczynski SJ, Xia M, Wilke C, Falkowski NR *et al.* Lung Microbiota
442 Contribute to Pulmonary Inflammation and Disease Progression in Pulmonary Fibrosis. *Am J*
443 *Respir Crit Care Med* 2019; **199**(9): 1127-1138.
444
- 445 39. Dobashi N, Fujita J, Yuji O, Ichiro Y, Takeo Y, Tadashi K *et al.* Detection of anti-cytokeratin 8
446 antibody in the serum of patients with cryptogenic fibrosing alveolitis and pulmonary fibrosis
447 associated with collagen vascular disorders. *Thorax* 1998; **53**: 969-974.
448
- 449 40. Kurosu K, Takiguchi Y, Okada O, Yumoto N, Sakao S, Tada Y *et al.* Identification of Annexin 1
450 as a Novel Autoantigen in Acute Exacerbation of Idiopathic Pulmonary Fibrosis. *The Journal of*
451 *Immunology* 2008; **181**: 756-767.
452
- 453 41. Wallace WA, Roberts SN, Caldwell H, Thornton EE, Greening AP, Lamb D *et al.* Circulating
454 antibodies to lung protein(s) in patients with cryptogenic fibrosing alveolitis. *Thorax* 1994; **49**:
455 218-224.
456
- 457 42. Parra ER, Teodoro WR, Velosa AP, de Oliveira CC, Yoshinari NH, Capelozzi VL. Interstitial
458 and vascular type V collagen morphologic disorganization in usual interstitial pneumonia. *J*
459 *Histochem Cytochem* 2006; **54**(12): 1315-1325.
460
- 461 43. Rangel-Moreno J, Hartson L, Navarro C, Gaxiola M, Selman M, Randall TD. Inducible
462 bronchus-associated lymphoid tissue (iBALT) in patients with pulmonary complications of
463 rheumatoid arthritis. *J Clin Invest* 2006; **116**(12): 3183-3194.
464
- 465 44. Xue J, Kass DJ, Bon J, Vuga L, Tan J, Csizmadia E *et al.* Plasma B Lymphocyte Stimulator
466 and B Cell Differentiation in Idiopathic Pulmonary Fibrosis Patients. *The Journal of Immunology*
467 2013; **191**: 2089-2095.
468
- 469 45. Humby F, Bombardieri M, Manzo A, Kelly S, Blades MC, Kirkham B *et al.* Ectopic lymphoid
470 structures support ongoing production of class-switched autoantibodies in rheumatoid
471 synovium. *PLoS Medicine* 2009; **6**: 0059-0075.
472

- 473 46. Song J, Wang H, Zhang YN, Cao PP, Liao B, Wang ZZ *et al*. Ectopic lymphoid tissues support
474 local immunoglobulin production in patients with chronic rhinosinusitis with nasal polyps.
475 *Journal of Allergy and Clinical Immunology* 2018; **141**: 927-937.
476

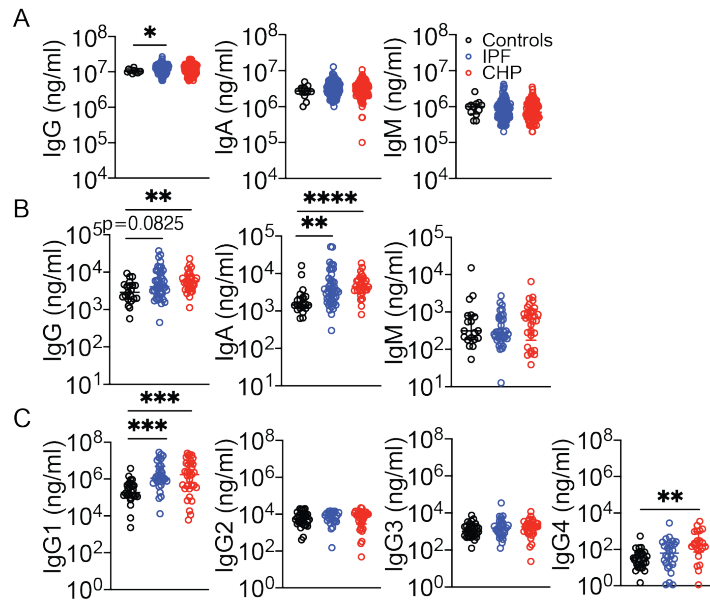


Figure 1. Local antibodies are increased in patients with IPF and CHP. (A) Total IgG, IgA and IgM concentrations in plasma from patients with IPF and CHP, and healthy controls. **(B)** Total IgG, IgA and IgM concentrations in BAL from patients with IPF and CHP, and healthy controls. **(C)** IgG1, IgG2, IgG3 and IgG4 concentrations in BAL from patients with IPF and CHP, and healthy controls. Each point represents an individual subject. Error bars represent median and interquartile range. Data were analysed using a non-parametric Kruskal-Wallis test with Dunn's multiple comparison. *, $p < 0.05$; **, $p < 0.01$; ***, $p < 0.001$; ****, $p < 0.0001$.

Table 1. Patient demographics for autoimmune array.

Parameter	Controls (n=20)	IPF (n=40)	CHP (n=20)	CTD (n=20)
Age, year mean (\pm SD)	64 (\pm 9)	73 (\pm 6) ^{***}	71 (\pm 8)	70 (\pm 12) [*]
Female sex, n (%)	25	33	60	50
Ex-smoker or current smoker, n (%)	56	68	40	53
FEV1, % predicted (\pm SD)	94 (\pm 19)	92 (\pm 21)	83 (\pm 21)	86 (\pm 28)
FVC, % predicted (\pm SD)	101 (\pm 15)	91 (\pm 21)	87 (\pm 22)	82 (\pm 24) [*]
DLCO, % predicted (\pm SD)	81 (\pm 29)	55 (\pm 15)	60 (\pm 16)	50 (\pm 19) [*]

FEV1: Forced expiratory volume in one second

FVC: Forced vital capacity

DLCO: Diffusing capacity of the lungs for carbon monoxide

Mann-Whitney U test: *, p<0.05; **, p<0.01; ***, p<0.001; ****, p<0.0001.

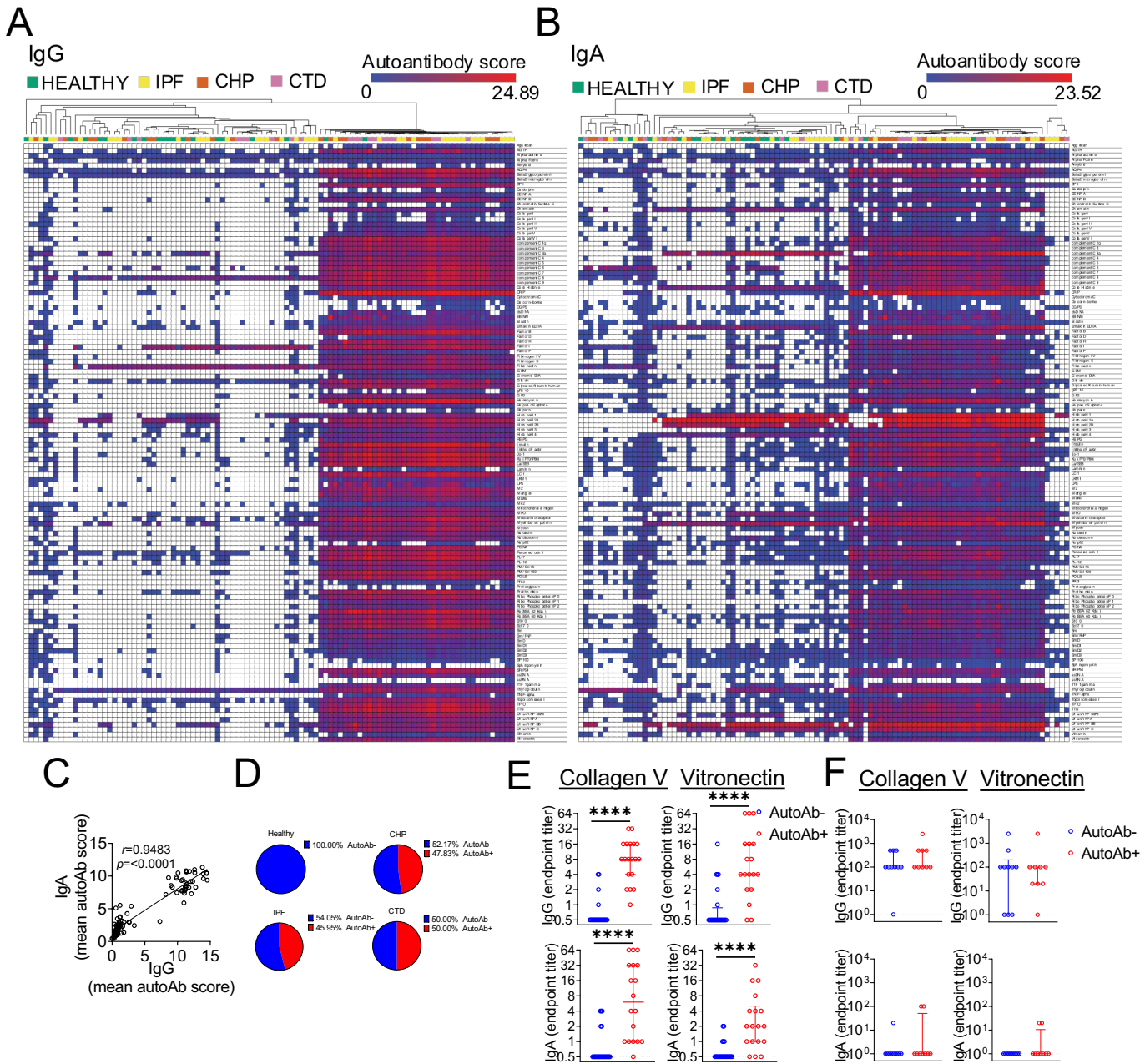


Figure 2. IgG and IgA autoantibodies are detectable in the airways of a subset of patients with fILD.

BAL IgG (A) and IgA (B) autoantibodies were screened for reactivity against 98 self antigens in IPF (n=40), CHP (n=20) or CTD patients (n=20) and non-fibrotic controls (n=20). Heatmaps show autoantibody scores, calculated as log₂ transformed(net fluorescence intensity x signal-to-noise ratio+1). White squares indicate samples for which autoantibody signal was not detectable against specific autoantigens. Samples were clustered hierarchically. (C) Pearson correlation between mean IgG and IgA autoantibody scores. (D) Proportions of autoantibody positive individuals in each study group. (E) BAL from the array was used to validate the findings independently in a sandwich-ELISA assay in order to validate presence of autoantibodies against collagen V and vitronectin. (F) Serum dilutions were also analysed for autoantibodies against collagen V and vitronectin. Each point in (C), (E) and (F) represents an individual subject. Error bars represent median and interquartile range. Data in (E) and (F) were analysed using a non-parametric Mann-Whitney U test. *, p<0.05; **, p<0.01; ***, p<0.001; ****, p<0.0001.

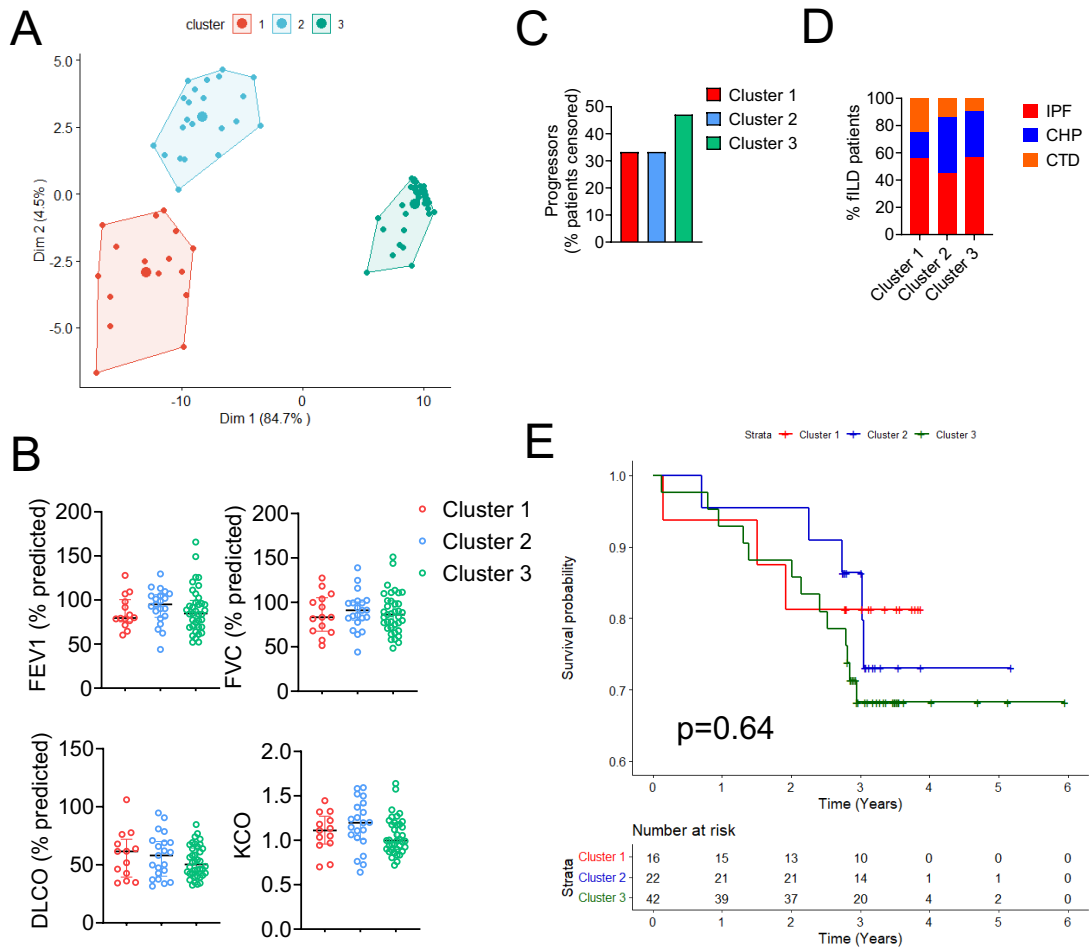


Figure 3. Presence of airway autoantibody in patients with fILD is not associated with reduced lung function or survival probability. (A) Principal components analysis followed by k means clustering based on airway IgG autoantibody scores. (B) Patient lung function scores by cluster. (C) Percentage of patients who show lung function decline as a proportion of all patients censored by cluster. (E) Kaplan-Meier curve generated using the Cox proportional hazards model showing predicted survival probability in patients in each of the clusters. Each point in (A) and (B) represents an individual subject. Error bars represent median and interquartile range.

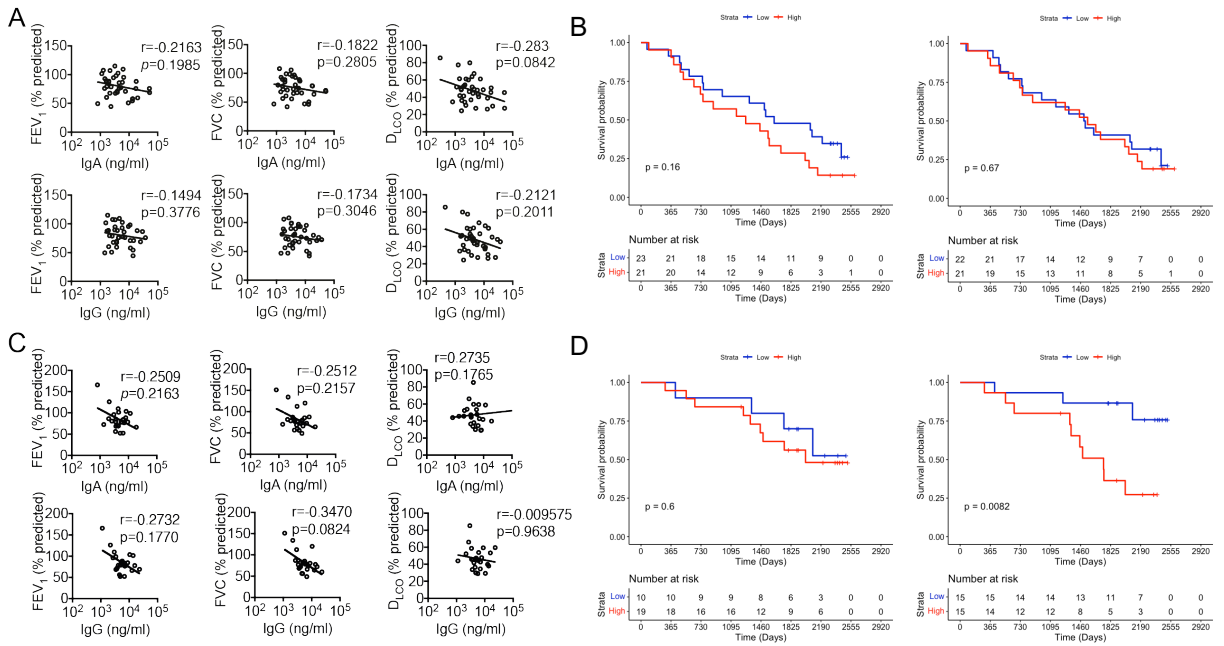


Figure S1. High airway IgA concentrations are associated with reduced survival probability in patients with CHP. (A) Pearson correlations between lung function measurements and airway antibody concentrations in BAL from patients with IPF. **(B)** Kaplan-Meier curve generated using the Cox proportional hazards model showing predicted survival probability in patients with IPF dichotomised by median concentrations of IgG and IgA. **(C)** Pearson correlations between lung function measurements and airway antibody concentrations in BAL from patients with CHP. **(D)** Kaplan-Meier curve generated using the Cox proportional hazards model showing predicted survival probability in patients with CHP dichotomised by median concentrations of IgG and IgA. FEV₁: forced expiratory volume in 1 second; FVC: forced vital capacity; D_{LCO}: diffusing capacity for carbon monoxide.

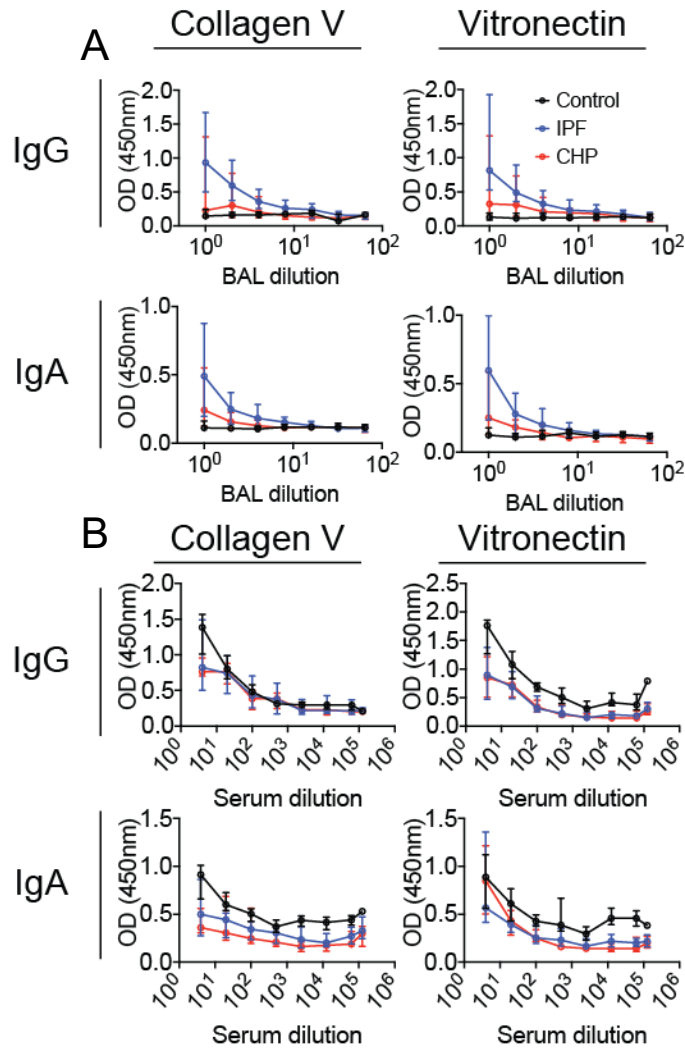


Figure S2. Dilution curves for BAL and serum. Serial dilutions of BAL (**A**) and serum (**B**) were analysed for autoantibodies against human collagen V and vitronectin. Each point represents the median optical density (OD) for each disease group. In BAL: control (n=13), IPF (n=15), CHP (n=14); in serum: control (n=6), IPF (n=15), CHP (n=10). Error bars represent median and interquartile range. Data were analysed using a two-way ANOVA.

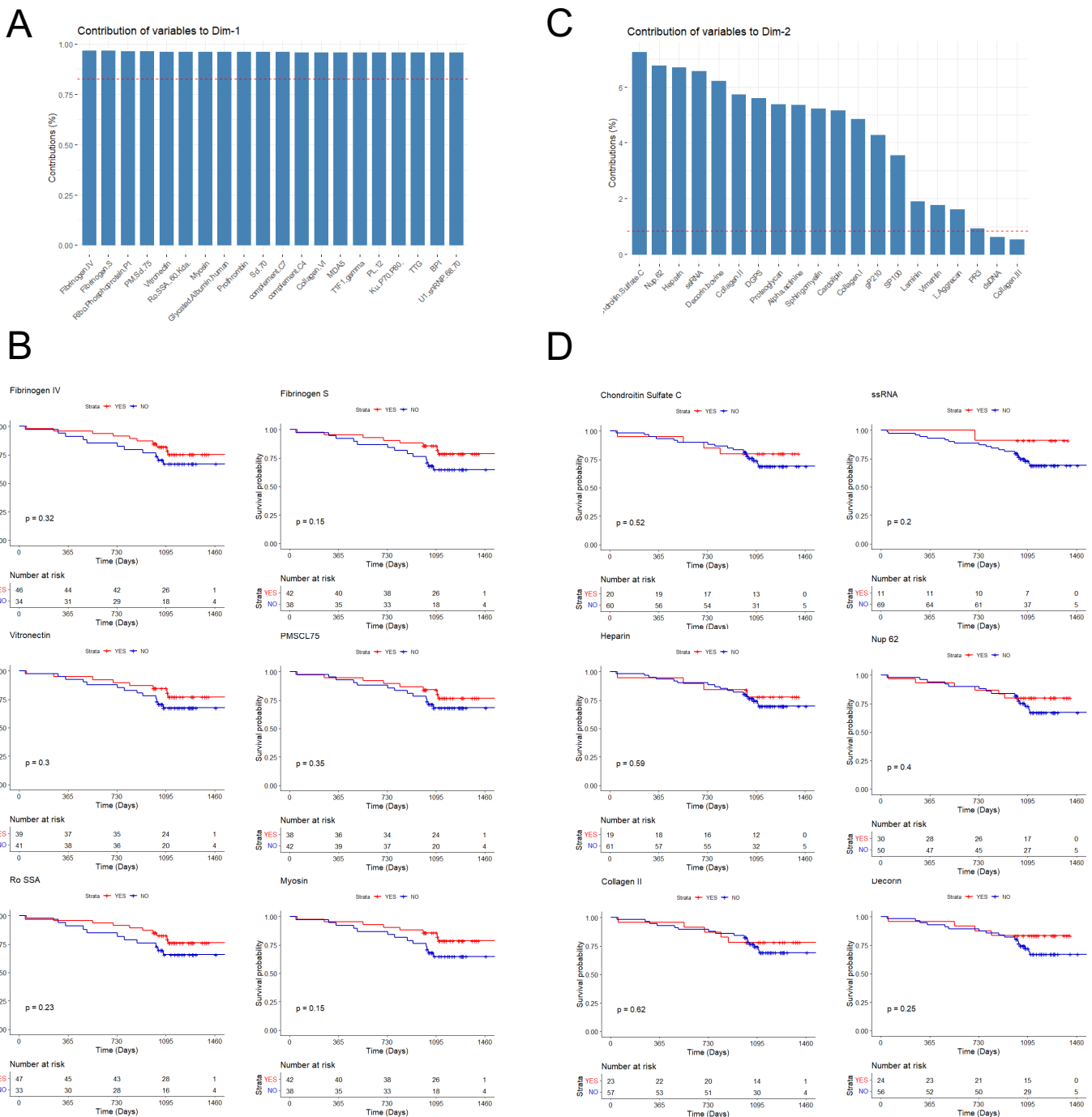


Figure S3. Specific autoantibodies driving patient clustering do not associate with survival. (A) Top 20 autoantigens contributing to PC1. (B) Kaplan-Meier analysis of top 6 proteins driving variance in PC1. (C) Top 20 autoantigens contributing to PC2. (D) Kaplan-Meier analysis of top 6 proteins driving variance in PC1. Kaplan-Meier curve generated using the Cox proportional hazards model showing predicted survival probability in patients in each of the clusters.