

1 **A highly sensitive and specific SARS-CoV-2 spike- and nucleoprotein-based**
2 **fluorescent multiplex immunoassay (FMIA) to measure IgG, IgA and IgM**
3 **class antibodies**

4
5 Authors

6 Anna Solastie¹, Camilla Virta¹, Anu Haveri¹, Nina Ekström¹, Anu Kantele², Simo Miettinen³, Johanna
7 Lempainen⁴, Pinja Jalkanen⁵, Laura Kakkola⁵, Timothée Dub⁶, Ilkka Julkunen^{5,7}, Merit Melin¹

8
9 Corresponding author: Anna Solastie, anna.solastie@thl.fi

10

11 ¹ Department of Health Security, Expert Microbiology Unit, Finnish Institute for Health and Welfare,
12 Helsinki, Finland

13 ² Meilahti Infectious Diseases and Vaccination Research Center, MeiVac, Department of Infectious
14 Diseases, Helsinki University Hospital and University of Helsinki, Helsinki, Finland.

15 ³ Department of Virology, University of Helsinki

16 ⁴ Department of Pediatrics, University of Turku and Turku University Hospital and Immunogenetics
17 Laboratory, Institute of Biomedicine, University of Turku, Turku, Finland

18 ⁵ Infection and Immunity, Institute of Biomedicine, University of Turku, Turku, Finland

19 ⁶ Department of Health Security, Infectious Disease Control and Vaccinations Unit, Finnish Institute
20 for Health and Welfare, Helsinki, Finland

21 ⁷ Clinical Microbiology, Turku University Hospital, Turku, Finland

22 **Abstract**

23 **Background.** Validation and standardization of accurate serological assays are crucial for the
24 surveillance of the coronavirus disease 2019 (COVID-19) pandemic and population immunity. **Methods.**
25 We describe the analytical and clinical performance of an in-house fluorescent multiplex immunoassay
26 (FMIA) for simultaneous quantification of antibodies against the severe acute respiratory syndrome
27 coronavirus 2 (SARS-CoV-2) nucleoprotein and spike glycoprotein. Furthermore, we calibrated IgG-
28 FMIA against World Health Organisation (WHO) International Standard and compared FMIA results to
29 an in-house enzyme immunoassay (EIA) and a microneutralisation test (MNT). We also compared the
30 MNT results of two laboratories. **Results.** IgG-FMIA displayed 100% specificity and sensitivity for
31 samples collected 13-150 days post-onset of symptoms (DPO). For IgA- and IgM-FMIA 100%
32 specificity and sensitivity were obtained for a shorter time window (13-36 and 13-28 DPO for IgA- and
33 IgM-FMIA, respectively). FMIA and EIA results displayed moderate to strong correlation, but FMIA
34 was overall more specific and sensitive. IgG-FMIA identified 100% of samples with neutralising
35 antibodies (NAbs). Anti-spike IgG concentrations correlated strongly ($\rho=0.77-0.84$, $P<2.2\times 10^{-16}$) with
36 NAb titers. The NAb titers of the two laboratories displayed a very strong correlation ($\rho=0.95$,
37 $P<2.2\times 10^{-16}$). **Discussion.** Our results indicate good correlation and concordance of antibody
38 concentrations measured with different types of in-house SARS-CoV-2 antibody assays. Calibration
39 against WHO international standard did not, however, improve the comparability of FMIA and EIA
40 results.

41

42 keywords: SARS-CoV-2, COVID-19, antibody, immunoassay, nucleoprotein, spike glycoprotein, WHO
43 international standard, neutralising antibodies, microneutralisation, receptor-binding domain

44

45 **Introduction**

46 Severe acute respiratory syndrome coronavirus 2 (SARS-CoV-2), the causative agent of coronavirus
47 disease 2019 (COVID-19), had claimed over 4 million lives and infected 190 million by late July 2021
48 [1]. A large proportion of all infections may go undetected in their acute phase [2,3] for various reasons,
49 such as lack of symptoms [4,5] or hesitancy of getting tested [6]. Therefore, accurate serological assays
50 are needed to provide more reliable estimates of COVID-19 prevalence.

51 SARS-CoV-2 serological assays are useful anywhere between determining seroprevalence
52 in the general population to the investigation of confined outbreaks. In neutralisation tests and other
53 serological tests alike, the clinical specificity and sensitivity of the assays can vary considerably [7–12].
54 Comparisons of methods and their standardisation is urgently needed to properly understand and apply
55 the vast acquired information on the immunity induced by SARS-CoV-2 infection and COVID-19
56 vaccines.

57 We describe the validation and performance of an in-house fluorescent multiplex
58 immunoassay (FMIA) developed for quantification of antibodies produced against three SARS-CoV-2
59 antigens: the full-length spike glycoprotein (SFL), spike receptor-binding domain (RBD) and
60 nucleoprotein (N). Our assay detects antibodies against these three antigens simultaneously, which
61 enables differentiation of natural SARS-CoV-2 infection from vaccine-induced immunity. The assay is
62 based on an FMIA previously described by Trivedi et al. [13]. We have recently reported the performance
63 of the FMIA for measuring IgG antibodies against SARS-CoV-2 nucleoprotein [14]. Here, we report our
64 findings on the analytical and clinical performance of FMIA and compare its IgG, IgA and IgM assay
65 results to another laboratory's in-house enzyme immunoassay (EIA) [15,16], both calibrated for IgG with
66 WHO International Standard [17]. Furthermore, we compare FMIA antibody levels to neutralising

67 antibody (NAb) titers [14,18] and NAb titers of microneutralisation tests (MNTs) between two separate
68 laboratories.

69

70 **Materials and methods**

71 **Serum samples**

72 We assessed the analytical and clinical performance of the FMIA by using negative and positive sample
73 panels. The negative sample panel consisted of 402 anonymous serum samples collected in mid-2019
74 before the COVID-19 pandemic. The positive serum panel consisted of 147 samples collected from 58
75 volunteers 4–150 days post-onset of symptoms (DPO) and 0–147 days post positive PCR test result for
76 SARS-CoV-2. Samples were collected as part of a COVID-19 household transmission study [19]. We
77 used the negative and positive serum panels also to compare FMIA and MNT results. We excluded one
78 sample due to limited sample volume leaving the total sample size to n=548. Details of the panels are
79 presented in Table S1 and Figure S1.

80 We compared FMIA with EIA using a serum panel that consisted of a subset of 80 samples
81 collected as part of a COVID-19 mRNA vaccine response study [16]. We collected the samples from
82 convalescent-phase PCR-confirmed COVID-19 patients (n=20) and volunteer health care workers
83 (n=20) who received two doses of Pfizer-BioNTech BNT162b2 mRNA vaccine. We recruited the
84 convalescent COVID-19 patients among outpatients with a positive RT-PCR positive test result in the
85 Helsinki University Hospital database and collected serum samples 15-41 (median 26) DPO. We
86 collected sera from 20 vaccinated volunteers before or on the day of the vaccination (day 0 samples),
87 three weeks (median 21 days, range 18-21) post 1st vaccine dose (3-week samples), and six weeks
88 (median 48 days, range 39-50) post 1st vaccine dose (6-week samples). At the time of the 6-week sample

89 collection, three weeks (median 27 days, range 18-29) had also passed from the 2nd vaccine dose.
90 Participant demographics are presented in Table S1.

91

92 **The SARS-CoV-2 FMIA**

93 Here, we adapted the previously described SARS-CoV-2 FMIA [14] for the measurement of IgG, IgA
94 and IgM antibodies against SARS-CoV-2 RBD, SFL and N antigens. Briefly, we conjugated SARS-
95 CoV-2 RBD (product code: REC31849), SFL (REC31868) and N (REC31812, the Native Antigen
96 Company) antigens on the surfaces of MagPlex®-C superparamagnetic carboxylated microspheres
97 (Luminex) by carbodiimide reaction. We added the microspheres onto black 96-well plates (Costar 3915)
98 with diluted sera, reference and control samples and incubated RT with shaking at 600 rpm in the dark
99 for 1 hour. We washed the unbound particles away with a magnetic plate washer (ELx405 and 405TSRS,
100 BioTek), and added R-Phycoerythrin-conjugated Affinipure Goat Anti-Human IgG, IgA or IgM Fcγ
101 Fragment Specific detection antibodies (Jackson Immuno Research) to the wells. We incubated the plates
102 for 30 minutes as described above and then washed them again. We measured the median fluorescence
103 intensity (MFI) with MAGPIX® system (Luminex). MFI values were automatically converted into
104 antibody concentration (FMIA U/ml) via interpolation from 5-parameter logistic (5-PL) curves
105 (xPONENT software version 4.2, Luminex) created from serially diluted (1:400–1:1638400) in-house
106 reference serum. We gave the 1:400 dilution of the standard an arbitrary concentration of 100 FMIA
107 U/ml. We performed the FMIA analyses at the Finnish Institute for Health and Welfare (Helsinki,
108 Finland). A full description of the FMIA method is presented in Supplementary Material.

109

110 **Evaluation of the analytical performance of FMIA**

111 **Limit of detection (LOD) and limit of quantification (LOQ).** We determined LOD and LOQ from 26
112 experiments by calculating the mean + 3x (LOD) and 8x (LOQ) standard deviation of MFI values

113 generated from blank wells (n=52). MFI values were converted into FMIA U/ml by interpolation from
114 the 5-PL reference curve with GraphPad Prism v9.

115 **Linearity.** We assessed the linearity of FMIA by comparing antibody concentration of serially diluted
116 (1:100, 1:200, 1:400, 1:800 and 1:1600) sera (IgG: n=6, IgA and IgM: n=7) collected as part of the
117 COVID-19 household transmission study [19]. Linearity was measured as Pearson correlation between
118 dilution factor and antibody concentration, and mean $R^2 \geq 0,95$ of all samples was considered acceptable.

119 **Precision and reproducibility.** We assessed the precision and reproducibility of FMIA as the mean
120 percentage of the coefficient of variation (CV%) of antibody concentrations between samples analysed
121 repeatedly in different settings. Precision was assessed as intra- and inter-assay variation and
122 reproducibility by comparing the results obtained by three laboratory technicians and as variation caused
123 by different batches of crucial reagents. A full description of the evaluation of analytical performance is
124 presented in Supplementary Material.

125

126 **Evaluation of the clinical performance of FMIA**

127 We determined the clinical performance of the antibody assays as their ability to distinguish negative-
128 (pre-COVID19 era) and positive panels' (PCR confirmed patients') sera. We determined the thresholds
129 for positivity by comparing all possible threshold combinations for the three antigens with R (version
130 3.6.0) and RStudio (version 1.2.1335). We prioritised a specificity of 100% and determined it with the
131 entire negative serum panel (n=402). Sensitivity was assessed separately for subgroups of the positive
132 serum panel's samples (n=147) based on DPOs.

133

134 **EIA**

135 The SARS-CoV-2 EIA used in this study has previously been described in detail [15]. We measured IgG,
136 IgA, IgM and total Ig antibodies against SARS-CoV-2 S1 and N proteins from sera diluted 1:300. SARS-

137 CoV-2 S1 (GenBank ID: MN908947.3) and N (Genbank ID: NC_045512.2) antigens were expressed
138 and purified, and antigen-specific antibody levels were measured with a Victor Nivo device
139 (PerkinElmer) as described previously [16]. We converted the results into EIA units by comparing the
140 absorbance values of samples with the absorbance values of 1:300 diluted positive control (marked as
141 100 EIA units) and 1:300 diluted negative control (marked as 0 EIA units) included in each assay.
142 Thresholds for positivity were previously determined with 20 negative sera [16]. We performed the EIA
143 analyses at the University of Turku (Turku, Finland).

144

145 **Calibration against WHO International Standard**

146 We calibrated the FMIA's IgG specific in-house reference serum against a WHO International Standard
147 (NIBSC code 20/136 [17]). We serially diluted the in-house reference serum and WHO international
148 standard and assigned the 1:100 dilution of the WHO international standard a concentration of 10 binding
149 antibody units (BAU)/ml. We conducted the analysis on two separate days and interpolated the mean
150 concentration for each dilution of the in-house reference serum from the linear range of the WHO
151 international standard. With EIA, we used the WHO international standard to calibrate the positive
152 control by diluting both 1:300 and calculating their ratio. We performed the EIA analysis once and used
153 the average absorbance values calculated from duplicate wells. We obtained a calibration factor for each
154 antigen separately and used them to convert FMIA U/ml and EIA units into BAU/ml.

155

156 **Microneutralisation tests**

157 **MNT of laboratory #1.** The MNT of laboratory #1 was performed at the Finnish Institute for Health and
158 Welfare (Helsinki, Finland) and the assay has been previously described in detail [14,18]. Briefly, the
159 MNT of laboratory #1 was performed using Vero E6 cells and true duplicates of sera diluted serially
160 from 1:4. After four days the cells were fixed with 30% formaldehyde and the cytopathic effect (CPE)

161 was measured. The viral strains used were hCoV-19/Finland/1/2020 (FIN-1) (GISAID accession ID
162 EPI_ISL_407079) and hCoV-19/Finland/FIN-25/2020 (FIN-25) in the analysis of positive and negative
163 serum panels, and FIN-1 in analyses of sera used in comparison to MNT of laboratory #2. A sample was
164 considered positive when the NAb titer was ≥ 6 for at least one virus and negative when titers for both
165 viruses were < 4 . Samples with titers between 6 and 4 for both viruses were considered borderline.
166 Negative samples were given a titer value of 2 for statistical analyses. In cases where the titers of the two
167 viruses differed, the titer of the sample was defined as the highest of the two.

168 **MNT of laboratory #2.** The MNT of laboratory #2 was performed at the University of Turku (Turku,
169 Finland) and the method has been previously described [16]. The MNTs between laboratories 1 and 2
170 differed in used viral isolate, serum dilution, cell line, incubation time and cell fixation. MNT of
171 laboratory #2 used VeroE6-TMPRSS2-H10 cells fixed with 4% formaldehyde and measured CPE after
172 three days. Starting dilution for sera was 1:20 with 50 TCID₅₀ of SARS-CoV-2 variant FIN-25
173 (EPI_ISL_412971, GenBank accession MW717675) and neutralisation titers were analysed in
174 duplicates. The NAb titer was defined as the last dilution resulting in 50% inhibition of cell death. The
175 threshold for positivity was ≥ 20 . Negative samples were given a titer value of 10 for statistical analyses.
176 FIN-1 represents lineage B (D614G substitution) and FIN-25 represent lineage B.1 with three amino acid
177 substitutions (D614G, 41% R682W, 45% YQTQT 674-678 [16]) in the spike glycoprotein compared to
178 the Wuhan-Hu-1 strain.

179

180 **Comparison of FMIA, EIA and MNT assays.**

181 We calculated Spearman correlation coefficient (ρ) and the statistical significance of the correlation
182 between FMIA and EIA antibody concentrations and the two laboratories' NAb titers. In addition, we
183 compared FMIA and EIA in their ability to detect antibodies induced by natural infection and
184 vaccination. Samples that were borderline in MNT of laboratory #1 were considered as positives.

185 **Ethical statement**

186 The investigations were carried out under the General Data Protection Regulation (Regulation (EU)
187 2016/679, directive 95/46/EC) and the Finnish Personal Data Act (Finlex 523/1999). The study protocols
188 for the collection of pre-COVID-19 pandemic samples and COVID-19 patient samples were approved
189 by the Helsinki-Uusimaa health district ethical permissions 433/13/03/00/15 and HUS/1238/2020. The
190 Finnish law on communicable diseases and the duties of the Finnish Institute for Health and Welfare
191 [20,21] allowed the implementation of the initial household transmission study without seeking further
192 institutional ethical review. A waiver of ethical approval was received from Prof. Mika Salminen
193 (Director of the Department for Health Security of the Finnish Institute for Health and Welfare). The
194 vaccinee cohort (n=20) was randomly selected from a larger cohort (n=180) of vaccinated healthcare
195 personnel of Turku University Hospital [16] approved by the Southwest Finland health district ethical
196 permission ETMK 19/1801/2020. Written informed consent was obtained from all volunteers.

197

198 **Results**

199 **Analytical performance of the FMIA**

200 We calculated the LOQ and LOD separately for each antigen and each antibody class and the data is
201 presented in Table S2. For IgA and IgM assays, the linearity with different serum dilutions was excellent
202 for all antigens (range $R^2=0.96-1$). For the IgG assay, less diluted samples (dilutions 1:100 and 1:200)
203 resulted in relatively lower IgG concentrations leading to weaker linearity correlations. Exclusion of
204 dilutions 1:100 and 1:200 resulted in $R^2 \geq 0.99$ for all antigens in the IgG assay. As a compromise to avoid
205 decreased clinical sensitivity and to minimize the number of serum dilutions, we decided to calculate
206 antibody concentrations from the average of 1:100 and 1:1600 dilutions for all except negative sample
207 panels sera, which analysed diluted 1:100.

208 The mean intra-assay variation ranged from 8 to 10% and inter-assay variation from 4 to
209 12% in the different antibody classes (Table S3). The mean variation between different technicians was
210 20% for IgG, 21% for IgA and 18% for IgM assays. The variation between four different batches of
211 conjugated microspheres was 16% and the variation between different batches of detection antibodies
212 was 15% for IgA and IgG assays. Overall, both intra- and inter-assay variation were found acceptable
213 for all antibody classes and antigens.

214

215 **Calibration against WHO international standard**

216 The IgG specific concentrations against N, RBD and SFL of the in-house reference serum calibrated
217 against the WHO International standard [17] were 34, 18 and 23 BAU/ml, respectively. Because the
218 starting dilution of IgG specific in-house reference sera was given an arbitrary concentration of 100
219 FMIA U/ml we multiplied the results by a factor of 0.34 for nucleoprotein, 0.18 for RBD and 0.23 for
220 SFL to obtain calibrated BAU/ml. In EIA, the calibration factor for N IgG was 12.9, for N total Ig 17.4,
221 for S1 IgG 11.8 and for S1 total Ig assay 12.0. We did not calibrate MNTs but obtained a titer of 192
222 against FIN-1 virus in laboratory #1 and 640 against FIN-25 in laboratory #2 for the WHO international
223 standard.

224

225 **Clinical performance of the FMIA**

226 We set the thresholds for positivity based on a positive panel of convalescent sera (n=147) and a negative
227 serum panel (n=402) aiming to achieve 100% specificity. We considered a sample positive for anti-spike
228 IgG antibodies (S-IgG) if it had ≥ 0.13 and ≥ 0.089 BAU/ml anti-RBD and anti-SFL IgG antibodies,
229 respectively. With these thresholds, the specificity of the S-IgG FMIA was 100% [95% CI: 99.1–100]
230 (Table 1). The sensitivity of the FMIA for detecting antibodies in convalescent sera was dependent on
231 DPO (Table 1). The sensitivity of the S-IgG FMIA assessed based on the positive serum panel (DPO 4–

232 150, n=147) was 97% [95% CI: 93.2–98.9]. All samples with IgG concentrations under the thresholds
233 (n=7/147) were collected 4–11 DPO (Figure 1). The sensitivity of the S-IgG FMIA was 100% [95% CI:
234 97.3–100] for samples collected 13–150 DPO (n=140) (Table 1). With the positive serum panel used in
235 this study (n=147) the specificity and sensitivity of the N-IgG FMIA we have previously described [14]
236 was 100% for samples collected 21-51 DPO but the sensitivity of the assay decreased to 98% for samples
237 collected 52-150 DPO (Figure 2).

238 The optimal threshold for IgA-FMIA was also based on the simultaneous detection of both
239 spike antibodies. We considered a sample positive for IgA antibodies if it contained ≥ 11.4 and ≥ 3.88
240 FMIA U/ml anti-RBD and anti-SFL IgA antibodies, respectively, which resulted in 100% specificity
241 [95% CI: 99.1–100] (Table 1.). For samples collected 13–36 DPO (n=69), the sensitivity was 100% [95%
242 CI: 94.7–100]. As DPO increased, sensitivity decreased as a lower number of the positive serum panel's
243 samples reached the thresholds (Figure 2).

244 The optimal threshold for IgM-FMIA was based only on the concentration of anti-SFL
245 antibodies, as the addition of RBD or N to the threshold criteria did not result in higher specificity or
246 sensitivity. We considered samples that contained ≥ 17.5 FMIA U/ml anti-SFL IgM antibodies positive
247 for IgM. The specificity of the IgM assay was 100% [95% CI: 99.1–100] with this threshold (Table 1).
248 DPO range resulting in 100% sensitivity was 13–28 days for IgM [95% CI for sensitivity: 91.0–100,
249 n=39] (Table 1). As DPO increased, the sensitivity of the IgM assay decreased steeply (Figure 2).

250

251 **Comparison of FMIA and MNT**

252 NAb titers exhibited strong ($\rho=0.77-0.84$) and statistically significant correlation ($P<2.2\times 10^{-16}$) with S-
253 IgG concentrations (Figure 3). All samples that contained NAb were also positive in IgG-FMIA
254 regardless of DPO (Table S4). Thereby the S-IgG FMIA was 100% [95% CI: 97.3-100] sensitive and
255 96% [95% CI: 91.1-98.4] specific for identification of NAb from samples taken 4-150 DPO. Some

256 samples were negative in MNT but positive for S-IgG in FMIA (Table S4) indicating that not all
257 antibodies that bind to SFL and RBD antigens used in FMIA are neutralising. The ability of IgA- and
258 IgM-FMIA to identify samples positive for NAbs was dependent on DPO in a manner similar to their
259 clinical sensitivity, indicating the different kinetics of IgA and IgM compared to NAb antibodies (Table
260 S4, Figure 2).

261

262 **Comparison of FMIA and EIA**

263 We compared the results of FMIA and EIA by analysing a panel of convalescent serum samples (n=20)
264 and pre-and post-vaccination samples (n=60) of 20 subjects. We observed the strongest correlations
265 ($\rho=0.94-0.95$) between FMIA and EIA for IgG (FMIA) and IgG or total Ig (EIA) antibody concentrations
266 against SARS-CoV-2 spike antigens (Figure 4). FMIA and EIA anti-spike antibody concentrations also
267 displayed a strong correlation in IgA and IgM assays ($\rho=0.79$ for IgA, $\rho=0.88$ for IgM, Figure S2). The
268 correlation between anti-N concentrations of IgG FMIA and EIA was moderate ($\rho=0.54$, Figure 4). Thus,
269 FMIA and EIA differed to some extent in their ability to measure antibodies induced by SARS-CoV-2
270 infection and COVID-19 mRNA vaccination.

271 Of convalescent patient sera (14-60 DPO), 20/20 had anti-N and S-IgG antibodies in FMIA,
272 while 15/20 had anti-N and 11/20 anti-S1 in IgG EIA and 19/20 had anti-N and 17/20 had anti-S1
273 antibodies in EIA total Ig assay. Anti-spike IgA antibodies were identified in 18/20 of patients when
274 measured with FMIA but only 1/20 had anti-S1 IgA antibodies with EIA. Anti-spike IgM antibodies
275 were identified in 18/20 and 20/20 of patients with FMIA and EIA, respectively. Of the samples collected
276 before vaccination, 1/20 (IgG FMIA), 0/20 (IgG EIA) and 5/20 (EIA total Ig) had anti-N antibodies while
277 lacking anti-spike antibodies. Of samples collected at 3 weeks after vaccination, 20/20 were positive for
278 anti-spike IgG in FMIA and 18/20 in EIA; 20/20 samples were positive at 6 weeks with both assays.

279 When we compared the IgG concentrations in convalescent and post-vaccination samples
280 measured with FMIA and EIA, the mean CV between FMIA U/ml and EIA units was 80%. The mean
281 CV increased to 130% when results were converted to BAU/ml. Hence, calibration with the WHO
282 standard did not increase the comparability of FMIA and EIA but increased the variation between the
283 two assays instead.

284

285 **Comparison of MNTs**

286 We compared the results of the NAb titers of two different laboratories with the same convalescent, pre-
287 and post-vaccination serum panels as with FMIA and EIA. The correlation between NAb titers of the
288 two laboratories was very strong at $\rho=0.95$ ($P<2.2\times 10^{-16}$) (Figure 5). Both MNTs classified 20/20 day
289 0 samples as negative and 20/20 6-week post-vaccination samples as positive. The MNT of laboratory
290 #1 was more sensitive at 3 weeks by identifying 18/20 of samples as having NAbs compared to 12/20 of
291 laboratory #2. Among convalescent-phase patient sera, NAbs were found in 19/20 of samples in
292 laboratory #1 and 18/20 of the samples in laboratory #2.

293

294 **Discussion**

295 We evaluated the analytical and clinical performance of SARS-CoV-2 FMIA and compared FMIA to
296 other serological assays. The clinical performance of the FMIA was excellent, reaching 100% sensitivity
297 and specificity. The clinical performance of S-IgG FMIA did not decrease through the sample collection
298 period (150 days or 5 months). The sensitivity of IgA- and IgM-FMIA decreased with increasing DPOs,
299 consistent with the shorter half-lives of IgA and IgM antibodies [22].

300 FMIA performed well in comparison to the in-house EIA antibody test. The correlation
301 between FMIA and EIA IgG and total Ig results was strong for spike glycoprotein and moderate for

302 nucleoprotein. Our results indicate that both methods accurately recognise vaccine-induced antibody
303 responses at 6 weeks, but that FMIA is slightly more sensitive than EIA in samples taken 3 weeks after
304 1st vaccine dose. As we compared the MNTs of two laboratories, we found that NAb titers had a very
305 strong correlation despite some differences in the methodology. Overall, the MNT of one of the
306 laboratories was somewhat more sensitive, which is likely explained by less diluted sera and different
307 viral strains (lineage B vs. B.1).

308 Limitations of this study are related to the sample material used in the validation process of
309 FMIA. In essence, the thresholds and DPOs described here were optimised for the detection of previous
310 infections with mild to moderate symptoms. Despite this, the S-IgG levels correlated strongly with NAb
311 titers. Our results also suggest that FMIA is better at recognising samples with NAbs than many
312 commercial assays [12]. Whilst S-IgG FMIA identified all samples with NAbs, it does not necessarily
313 measure antibodies against neutralising epitopes only, as some samples negative in MNT were
314 considered positive for S-IgG. We conclude that FMIA is valuable in pre-screening of serum samples
315 prior to confirmatory MNT. As the anti-SARS-CoV-2 antibody levels have been found to correlate with
316 the disease severity [23–25], we can expect FMIA to perform well in the serological diagnostics of also
317 previous severe infections. Importantly, while the present data show an excellent sensitivity for IgG-
318 FMIA until 150 DPO, its performance after that remains to be investigated.

319 Estimates of the persistence of immunity to COVID-19 appear to depend on the serological
320 assay used [11,26]. We recently reported that six and twelve months after SARS-CoV-2 infection 98%
321 and 97 % of the patients, respectively, still had S-IgG in FMIA [27]. Other recent studies have found that
322 anti-spike IgG antibodies persist in 90% of individuals seven [28] and nine months [29] after a confirmed
323 SARS-CoV-2 infection. We found no decrease in the sensitivity of the spike-based IgG-FMIA in samples
324 collected up to 5 months after infection. Anti-nucleoprotein antibodies have been reported to wane faster
325 [27,30], consistent with our findings of sensitivity decreasing from 100 to 98% for N-IgG FMIA 52-150

326 DPO. Together with data of persisting antibodies, our findings imply, that S-IgG FMIA continues to be
327 reliable in the detection of antibodies produced against SARS-CoV-2 for at least several months after
328 infection.

329 Notably, the participants providing convalescent serum samples for the positive serum
330 panel were likely all infected with a B.1 lineage virus since the samples were collected in Finland between
331 March and September 2020. However, by using two spike antigens (RBD and SFL), both of which
332 include multiple antibody binding sites, FMIA is less likely to lose performance when facing infections
333 caused by various SARS-CoV-2 variants. The combination of antigens makes FMIA also less susceptible
334 to possible cross-reactivity with antibodies produced against seasonal coronaviruses. Additionally, FMIA
335 could be used to distinguish immune response induced by COVID-19 vaccination and recent SARS-
336 CoV-2 infection.

337 The need for highly sensitive and specific antibody tests will continue in the future as new
338 variants emerge fuelling further COVID-19 waves. Here we have described a reliable antibody assay for
339 the simultaneous quantification of multiple SARS-CoV-2 antibodies, with excellent clinical performance
340 and good comparability with NAb titers. We have also described the calibration of FMIA against a WHO
341 international standard, which has been reported to reduce inter-laboratory variation notably [31].
342 However, we observed that calibrating FMIA and EIA only emphasised the differences between their
343 results. In FMIA the results are calculated from a standard curve and in EIA from the ratio between a
344 sample and two controls. Although standardisation of SARS-CoV-2 antibody assays is urgently needed,
345 our results indicate only a limited value for the international standard in calibrating two assays whose
346 test principles are quite different. The applicability and value brought by calibration should be considered
347 when used in comparisons between methodologically diverse assays.

348

349

350 **Conflict of interest**

351 NE, CV and MM are co-investigators in an unrelated study, for which THL has received research funding
352 from GlaxoSmithKline Vaccines. AS, AH, AK, SM, JL, PJ, LK, TD and IJ report no conflicts of interest.

353

354 **Funding**

355 The study was supported by funds from the Finnish Institute for Health and Welfare, University of Turku
356 and the Academy of Finland (grant numbers 336439, 336431, 337527, 335527 and 335530), the Finnish
357 Medical Foundation, the Finnish governmental subsidy for health science research and Jane and Aatos
358 Erkkö Foundation (grant number 5360-cc2fc).

359

360 **Authors' contributions**

361 CV, AH, AS, PJ and LK performed the laboratory analyses. AK, SM, LH and TD recruited the volunteers
362 and managed serum sample collection. AS and CV developed and optimised the assay. AS, NE, CV and
363 MM analysed the results. AS, JL, IJ and MM contextualised and AS, NE, AH, CV and MM drafted the
364 manuscript. All authors approved the final version.

365

366 **Acknowledgements**

367 Leena Saarinen, Marja Suorsa, Lotta Hagberg, Esa Ruokokoski, Tuomo Nieminen, Hanna Valtonen,
368 Katja Lind, Heidi Hemmilä, Tiina Pulliainen, Marja-Liisa Ollonen, Minna Haanpää, Katri Keino, Riitta
369 Santanen, Christel Pussinen, Mervi Nosa, Anne-Mari Pieniniemi and Anne Suominen.

370

371

372 **References**

- 373 1. WHO Coronavirus (COVID-19) Dashboard [Internet]. [cited 2021 Jul 22]. Available from:
374 <https://covid19.who.int>
- 375 2. Byambasuren O, Dobler CC, Bell K, et al. Comparison of seroprevalence of SARS-CoV-2
376 infections with cumulative and imputed COVID-19 cases: Systematic review. PLOS ONE. **2021**;
377 16(4):e0248946.
- 378 3. Kalish H, Klumpp-Thomas C, Hunsberger S, et al. Undiagnosed SARS-CoV-2 seropositivity
379 during the first 6 months of the COVID-19 pandemic in the United States. Sci Transl Med. **2021**;
380 13(601).
- 381 4. Hellewell J, Russell TW, Matthews R, et al. Estimating the effectiveness of routine asymptomatic
382 PCR testing at different frequencies for the detection of SARS-CoV-2 infections. BMC Med.
383 **2021**; 19(1):106.
- 384 5. Huo X, Chen J, Ruan S. Estimating asymptomatic, undetected and total cases for the COVID-19
385 outbreak in Wuhan: a mathematical modeling study. BMC Infect Dis. **2021**; 21(1):476.
- 386 6. McElfish PA, Purvis R, James LP, Willis DE, Andersen JA. Perceived Barriers to COVID-19
387 Testing. Int J Environ Res Public Health. **2021**; 18(5):2278.
- 388 7. Nasrallah GK, Dargham SR, Shurrab F, et al. Analytic comparison between three high-throughput
389 commercial SARS-CoV-2 antibody assays reveals minor discrepancies in a high-incidence
390 population. Sci Rep. **2021**; 11(1):11837.
- 391 8. Nilsson AC, Holm DK, Justesen US, et al. Comparison of six commercially available SARS-
392 CoV-2 antibody assays—Choice of assay depends on intended use. Int J Infect Dis. **2021**;
393 103:381–388.
- 394 9. Whitman JD, Hiatt J, Mowery CT, et al. Evaluation of SARS-CoV-2 serology assays reveals a
395 range of test performance. Nat Biotechnol. **2020**; 38(10):1174–1183.
- 396 10. Iyer AS, Jones FK, Nodoushani A, et al. Persistence and decay of human antibody responses to
397 the receptor binding domain of SARS-CoV-2 spike protein in COVID-19 patients. Sci Immunol.
398 **2020**; 5(52):eabe0367.
- 399 11. Favresse J, Eucher C, Elsen M, et al. Persistence of Anti-SARS-CoV-2 Antibodies Depends on
400 the Analytical Kit: A Report for Up to 10 Months after Infection. Microorganisms. **2021**;
401 9(3):556.
- 402 12. Jääskeläinen AJ, Kuivanen S, Kekäläinen E, et al. Performance of six SARS-CoV-2
403 immunoassays in comparison with microneutralisation. J Clin Virol. **2020**; 129:104512.

- 404 13. Trivedi SU, Miao C, Sanchez JE, et al. Development and Evaluation of a Multiplexed
405 Immunoassay for Simultaneous Detection of Serum IgG Antibodies to Six Human Coronaviruses.
406 *Sci Rep.* **2019**; 9(1):1390.
- 407 14. Ekström N, Virta C, Haveri A, et al. Analytical and clinical evaluation of antibody tests for
408 SARS-CoV-2 serosurveillance studies used in Finland in 2020. *medRxiv.* **2021**;
409 :2021.01.21.21250207.
- 410 15. Jalkanen P, Pasternack A, Maljanen S, et al. A combination of N and S antigens with IgA and IgG
411 measurement strengthens the accuracy of SARS-CoV-2 serodiagnostics. *J Infect Dis.* **2021**;
412 224(2):218–228.
- 413 16. Jalkanen P, Kolehmainen P, Häkkinen HK, et al. COVID-19 mRNA vaccine induced antibody
414 responses against three SARS-CoV-2 variants. *Nat Commun.* **2021**; 12(1):3991.
- 415 17. Mattiuzzo G, Bentley EM, Hassall M, et al. Establishment of the WHO International Standard and
416 Reference Panel for anti-SARS-CoV-2 antibody. WHO/BS/20202402.
- 417 18. Haveri A, Smura T, Kuivanen S, et al. Serological and molecular findings during SARS-CoV-2
418 infection: the first case study in Finland, January to February 2020. *Eurosurveillance.* **2020**;
419 25(11):2000266.
- 420 19. Dub T, Nohynek H, Hagberg L, et al. High secondary attack rate and persistence of SARS-CoV-2
421 antibodies in household transmission study participants, Finland 2020.
- 422 20. Act on the National Institute for Health and Welfare 668/2008. [Internet]. [cited 2021 Jul 12].
423 Available from: www.finlex.fi/en/laki/kaannokset/2008/en20080668.pdf
- 424 21. Communicable Diseases Act 1227/2016. [Internet]. [cited 2021 Jul 12]. Available from:
425 www.finlex.fi/en/laki/kaannokset/2016/en20161227.pdf
- 426 22. Lobo ED, Hansen RJ, Balthasar JP. Antibody pharmacokinetics and pharmacodynamics. *J Pharm*
427 *Sci.* **2004**; 93(11):2645–2668.
- 428 23. Chen X, Pan Z, Yue S, et al. Disease severity dictates SARS-CoV-2-specific neutralizing antibody
429 responses in COVID-19. *Signal Transduct Target Ther.* **2020**; 5(1):180.
- 430 24. Long Q-X, Tang X-J, Shi Q-L, et al. Clinical and immunological assessment of asymptomatic
431 SARS-CoV-2 infections. *Nat Med.* **2020**; 26(8):1200–1204.
- 432 25. Röltgen K, Powell AE, Wirz OF, et al. Defining the features and duration of antibody responses to
433 SARS-CoV-2 infection associated with disease severity and outcome. *Sci Immunol.* **2020**; 5(54).
- 434 26. Choe PG, Kim K-H, Kang CK, et al. Antibody Responses 8 Months after Asymptomatic or Mild
435 SARS-CoV-2 Infection. *Emerg Infect Dis.* **2021**; 27(3).
- 436 27. Haveri A, Ekström N, Solastie A, et al. Persistence of neutralizing antibodies a year after SARS-
437 CoV-2 infection. *medRxiv.* **2021**; :2021.07.13.21260426.

- 438 28. Glück V, Grobecker S, Tydykov L, et al. SARS-CoV-2-directed antibodies persist for more than
439 six months in a cohort with mild to moderate COVID-19. *Infection*. **2021**; .
- 440 29. Yao L, Wang G-L, Shen Y, et al. Persistence of Antibody and Cellular Immune Responses in
441 Coronavirus Disease 2019 Patients Over Nine Months After Infection. *J Infect Dis*. **2021**;
442 (jiab255).
- 443 30. Fenwick C, Croxatto A, Coste AT, et al. Changes in SARS-CoV-2 Spike versus Nucleoprotein
444 Antibody Responses Impact the Estimates of Infections in Population-Based Seroprevalence
445 Studies. *J Virol*. **2021**; 95(3):e01828-20.
- 446 31. Kristiansen PA, Page M, Bernasconi V, et al. WHO International Standard for anti-SARS-CoV-2
447 immunoglobulin. *The Lancet*. **2021**; 397(10282):1347–1348.

448

449 **Figures and tables**

450 Table 1. Thresholds, clinical specificity and clinical sensitivity of FMIA.

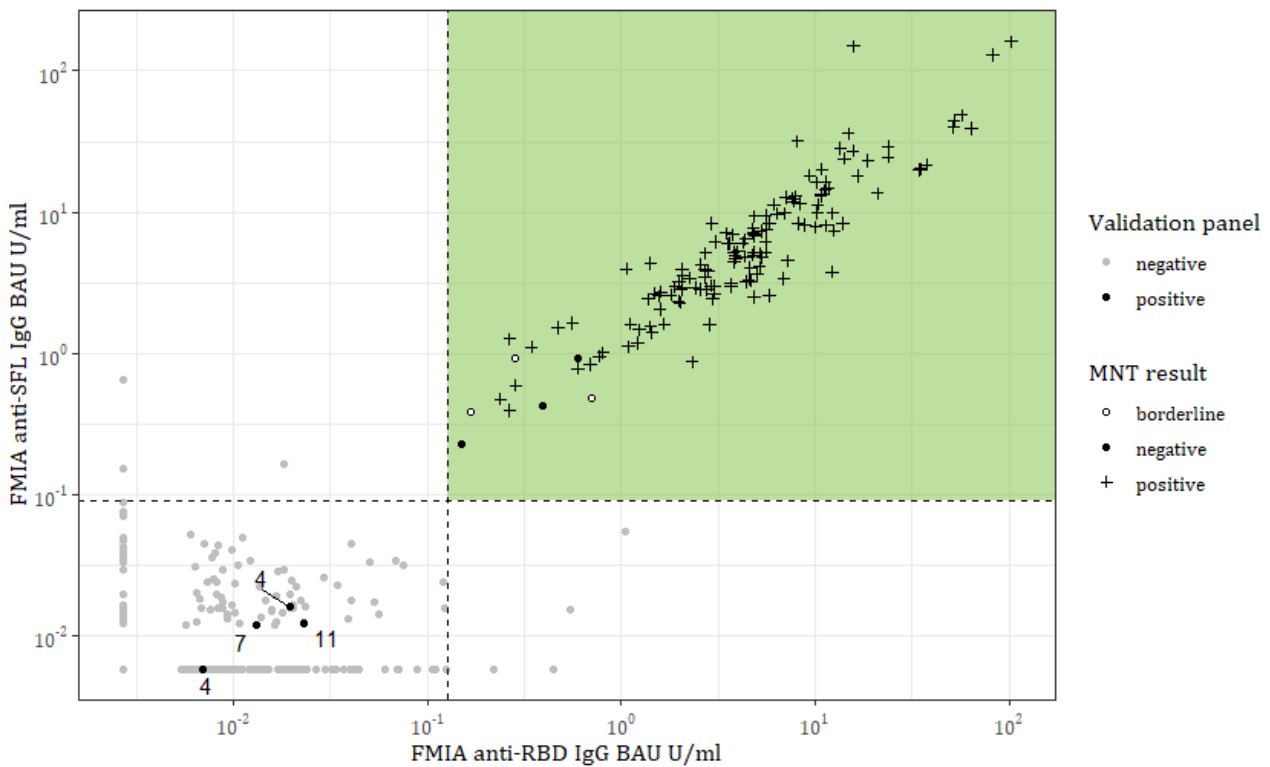
	IgG	IgA	IgM
FMIA threshold (U/ml)	SFL \geq 0.388 & RBD \geq 0.712	SFL \geq 3.88 & RBD \geq 11.4	SFL \geq 17.5
WHO standard adjusted threshold (BAU/ml)	SFL \geq 0.089 & RBD \geq 0.13	-	-
DPO of optimal sensitivity	13–150	13–36	13–28
Specificity [95% CI ^a] (n ^b)	100% [99.1–100%] (n=402)	100% [99.1–100%] (n=402)	100% [99.1–100%] (n=402)
Sensitivity [95% CI ^a] (n ^c)	100% [97.3–100%] (n=140)	100% [94.7–100%] (n=69)	100% [91.0–100%] (n=39)

451

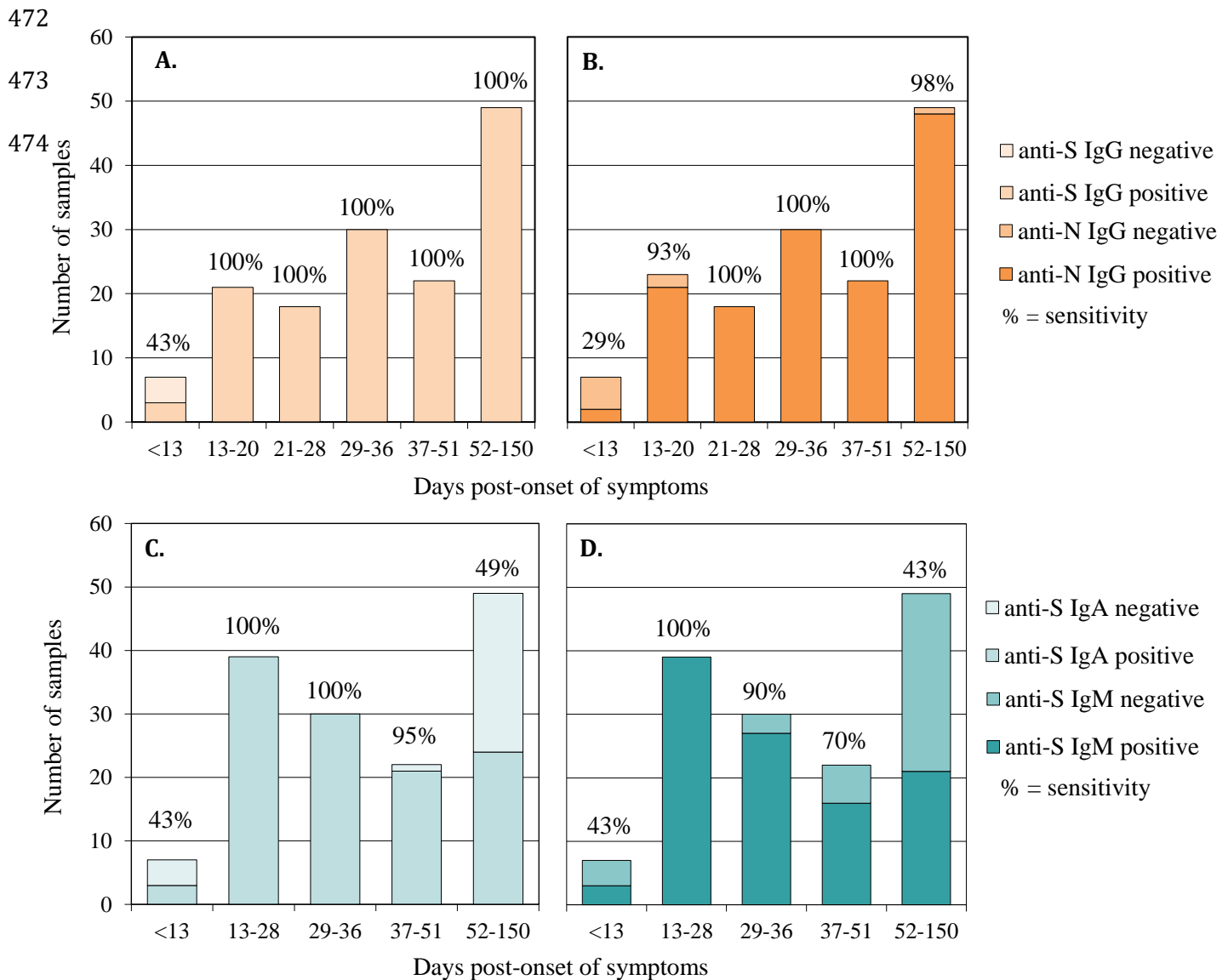
452 RBD = receptor binding domain of SARS-CoV-2 (Wuhan-Hu-1) spike glycoprotein. SFL = full-length
453 spike glycoprotein of SARS-CoV-2 (Wuhan-Hu-1). DPO = Days post-onset of symptoms. ^a = Wilson
454 confidence interval. ^b = Number of negative samples used for calculations. ^c = Number of positive
455 samples used for calculations, which includes only part of the positive serum panel and differs between
456 antibody classes due to exclusion of samples that did not meet DPO of optimal sensitivity criteria.

457 Figure 1. Anti-SFL and RBD IgG antibody concentrations (BAU/ml) of positive (black, n=147) and
 458 negative (grey, n=402) serum panels measured with FMIA. Dashed lines represent IgG SFL and RBD
 459 assay thresholds, and samples that pass both thresholds (coloured area) are classified as positive for
 460 SARS-CoV-2 spike specific IgG antibodies. The numbers indicate days post-onset of symptoms for
 461 samples that belong to the positive serum panel but were categorized as negative for anti-spike IgG
 462 antibodies in FMIA. MNT result = microneutralisation test interpretation; <4 = negative, 4 = borderline,
 463 >4 = positive. RBD = receptor binding domain of SARS-CoV-2 (Wuhan-Hu-1) spike glycoprotein. SFL
 464 = full-length spike glycoprotein of SARS-CoV-2 (Wuhan-Hu-1).

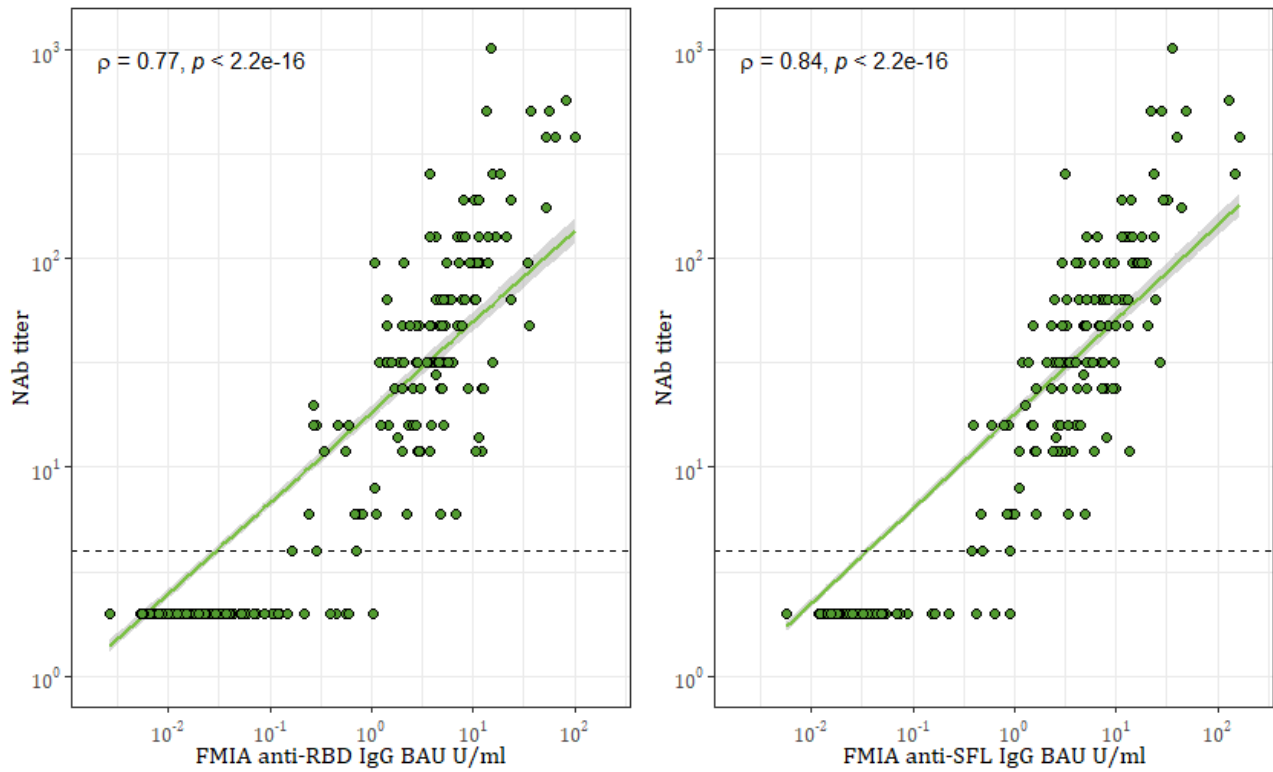
465



466 Figure 2: Sensitivity (%) of SARS-CoV-2 FMIA and the effect of time post-onset of symptoms (DPO).
 467 **A.** Anti-S (SFL and RBD) IgG FMIA. **B.** Anti-N IgG FMIA. **C.** Anti-S (SFL and RBD) IgA FMIA. **D.**
 468 Anti-S (SFL) IgM FMIA. n = number of positive serum panel's samples in each DPO group. RBD =
 469 receptor binding domain of SARS-CoV-2 (Wuhan-Hu-1) spike glycoprotein. SFL = full-length spike
 470 glycoprotein of SARS-CoV-2 (Wuhan-Hu-1). N = SARS-CoV-2 nucleoprotein of SARS-CoV-2
 471 (Wuhan-Hu-1).

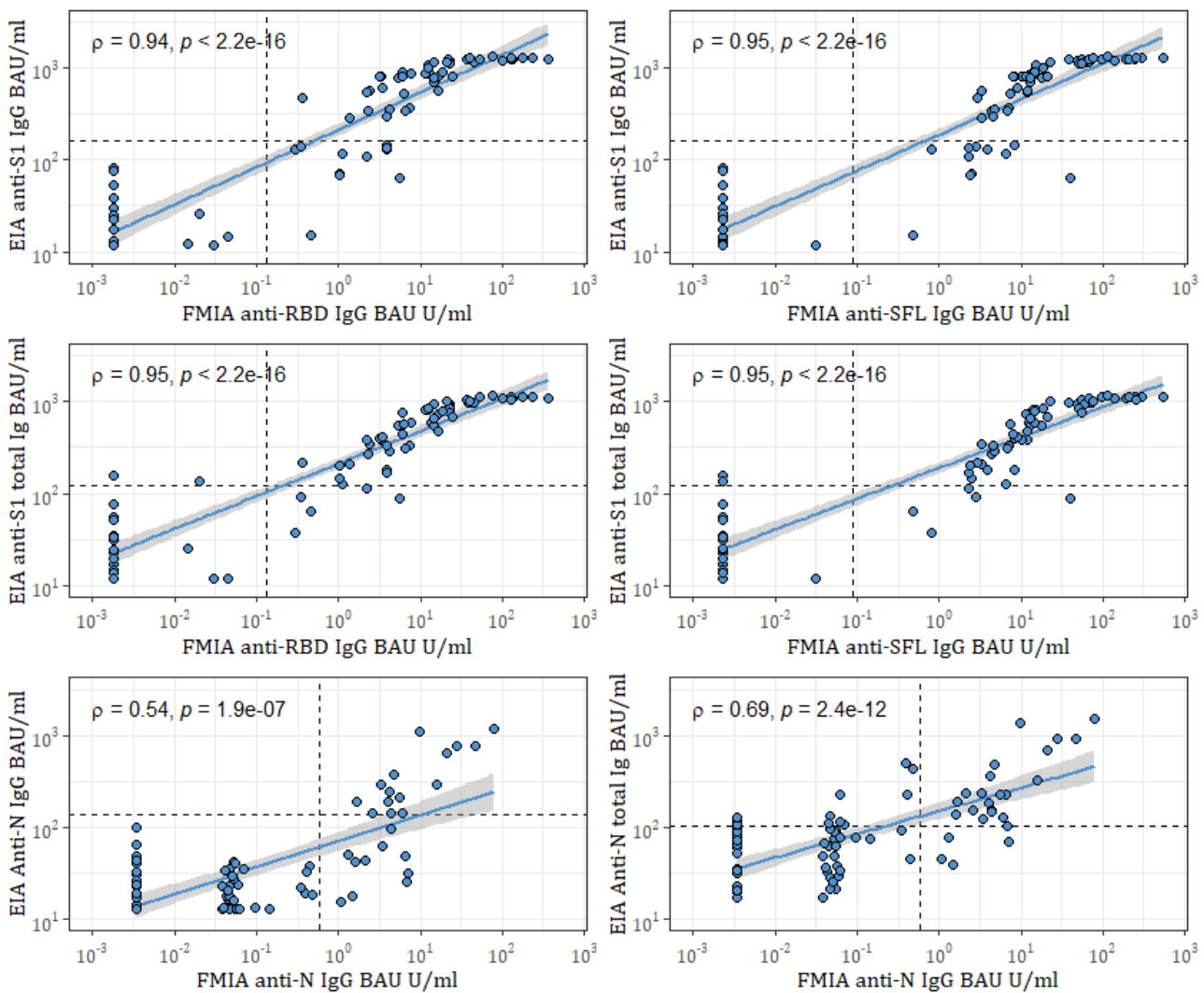


475 Figure 3. Spearman correlation (ρ) and significance (p) between FMIA anti-spike antibody
476 concentrations and neutralising antibody (NAb) titers. The dashed line marks the threshold for positive
477 MNT result (>4). One point may represent multiple samples ($n=548$). RBD = receptor binding domain
478 of SARS-CoV-2 (Wuhan-Hu-1) spike glycoprotein. SFL = full-length spike glycoprotein of SARS-CoV-
479 2 (Wuhan-Hu-1).



480

481 Figure 4. Spearman correlation (ρ) and significance (p) between FMIA IgG and EIA IgG and total anti-
 482 spike Ig antibodies in binding antibody units (BAU/ml) calibrated against WHO international standard.
 483 Dashed lines mark thresholds for positivity per antigen. One point may represent multiple samples
 484 ($n=80$). S1 = SARS-CoV-2 spike glycoprotein S1 subunit, RBD = receptor binding domain of SARS-
 485 CoV-2 (Wuhan-Hu-1) spike glycoprotein. SFL = full-length spike glycoprotein of SARS-CoV-2
 486 (Wuhan-Hu-1). N = SARS-CoV-2 nucleoprotein of SARS-CoV-2 (Wuhan-Hu-1).
 487



488

489

490 Figure 5. Spearman correlation (ρ) and significance (p) between neutralising antibody (NAb) titers of
491 two laboratories. Dashed lines mark thresholds for positivity (≥ 6 for laboratory #1 and ≥ 20 for laboratory
492 #2). One point may represent multiple samples (n=80).

493

