

Interventional Neurorehabilitation for Promoting Functional Recovery Post-Craniotomy: A Proof-of-Concept

Anujan Poologaindran^{1,2} MSc, Christos Profyris^{3,4} FC Neurosurg (SA), Isabella M. Young⁴ BSc, Nicholas B. Dadario BSc^{4,5}, Syed A. Ahsan⁴ BMed, Kassem Chendeb⁴ CS, Robert G. Briggs⁶ MD, Charles Teo⁴ FRACS, Rafael Romero-Garcia¹ PhD, John Suckling^{1,2} PhD, *Michael E. Sughrue^{1,4} MD

¹Brain Mapping Unit, Department of Psychiatry, University of Cambridge, Cambridge, UK

²The Alan Turing Institute, British Library, London, UK

³Netcare Linksfield Hospital, Johannesburg, South Africa

⁴Department of Neurosurgery, Prince of Wales Private Hospital, Sydney, Australia

⁵Rutgers Robert Wood Johnson Medical School, New Brunswick, New Jersey, USA

⁶Department of Neurosurgery, University of Southern California, Los Angeles, California, USA

*Corresponding Author, sughruevs@gmail.com

Corresponding Author: Dr. Michael E. Sughrue

Neurosurgeon, Dept. of Neurosurgery, Prince of Wales Private Hospital, Sydney, Australia

Visiting Researcher, Department of Psychiatry, University of Cambridge, Cambridge, UK

sughruevs@gmail.com

P-(02) 8328 0975 / F-(02) 9169 6375

Running Title: Interventional Neurorehabilitation

Key Words: connectomics, rehabilitation, functional imaging, transcranial magnetic stimulation, glioma

Interventional Neurorehabilitation for Promoting Functional Recovery Post-Craniotomy: A Proof-of-Concept

ABSTRACT

Purpose: The human brain is a highly plastic ‘complex’ network –it is highly resilient to damage and capable of self-reorganisation after a large perturbation. Clinically, neurological deficits secondary to iatrogenic injury have very few active treatments. New imaging and stimulation technologies, though, offer promising therapeutic avenues to accelerate post-operative recovery trajectories. In this study, we sought to establish the safety profile for ‘interventional neurorehabilitation’: connectome-based therapeutic brain stimulation to drive cortical reorganisation and promote functional recovery post-craniotomy.

Methods: In n=34 glioma patients who experienced post-operative motor or language deficits, we used connectomics to construct single-subject cortical networks. Based on their clinical and connectivity deficit, patients underwent network-specific Transcranial Magnetic Stimulation (TMS) sessions daily over five consecutive days. Patients were then assessed for TMS-related side effects and improvements.

Results: 31/34 (91%) patients were successfully recruited and enrolled for TMS treatment within two weeks of glioma surgery. No seizures or serious complications occurred during TMS rehabilitation and one-week post-stimulation. Transient headaches were reported in 4/31 patients but improved after a single session. No neurological worsening was observed while a benefit was noted in 28/31 patients post-TMS. We present two clinical vignettes and a video demonstration of interventional neurorehabilitation.

Conclusions: For the first time, we demonstrate the safety profile and ability to recruit, enrol, and complete TMS acutely post-craniotomy in a high seizure risk population. Given the lack of randomisation and controls in this study, prospective randomised sham-controlled stimulation trials are now warranted to establish the efficacy of interventional neurorehabilitation following craniotomy.

1 **Interventional Neurorehabilitation for Promoting Functional** 2 **Recovery Post-Craniotomy: A Proof-of-Concept**

3 **Introduction**

4 The human brain is a highly plastic ‘complex’ network [1,2]: it self-organises without a
5 hard blueprint, it adapts to evolving circumstances, and can withstand external insults. Our
6 thoughts and behaviour are directly governed by how our brain networks handle, orchestrate, and
7 execute various internal and external demands [3]. Nevertheless, similar to other naturally-
8 occurring networks, brain networks can only endure a finite amount of damage before becoming
9 maladaptive and fragmented [4].

10
11 The practice of neurosurgery is based on therapeutically altering the brain’s global
12 workspace to improve clinical outcomes [5,6]. However, since the antiquity of neurosurgery, few
13 strategies have been employed to directly address neurological deficits due to iatrogenic injury.
14 In fact, the usual approach is to send patients to physiotherapy and hope they improve over time
15 in a sufficiently stimulating environment. Moreover, rehabilitation is further complicated when
16 surgical pathology implicates critical areas for motor initiation, alertness, motivation, and
17 consciousness [7]. Furthermore, advanced neurocomputational models suggest the capacity for
18 neuroplasticity greatly varies based on the type of cortical damage which has occurred [8].
19 Ideally, a fundamental goal of neuro-oncological surgery should be to drive cortical
20 reorganisation and promote functional recovery in the immediate post-operative period. To
21 advance this viewpoint, we coin a new concept called ‘interventional neurorehabilitation’:
22 connectome-based therapeutic brain stimulation to promote network plasticity and functional
23 recovery.

24
25 Over the past few years, monumental advancements have been made in neuroimaging
26 and neurostimulation technologies. Today, state-of-the art connectome methods enable
27 neuroscientists to make highly accurate single-subject predictions on cognition [9-11]. In
28 addition, we are beginning to non-invasively stimulate focally at-depth without perturbing
29 overlying cortical structures [12]. However, before leveraging the most advanced technologies
30 for interventional neurorehabilitation, applying well-studied existing stimulation approaches is

31 sensible. Repetitive transcranial magnetic stimulation (rTMS) is an FDA-approved stimulation
32 therapy routinely performed at hospitals across the world [13]. Given its relative ease and non-
33 invasiveness, the field of TMS has flourished to treat a range of neurological and psychiatric
34 illnesses. In acute and chronic stroke patients, rTMS facilitates cortical reorganization leading to
35 functional preservation or compensation in motor and language abilities [14]. Unfortunately,
36 prognosis is still poor in many these patients, which may be explained by the limited capacity for
37 effective cerebral plasticity following some acute injuries compared to slow growing tumors [8].
38 While meta-analyses highlight the remarkable safety of rTMS in ischemic stroke patients with
39 extremely low-risks for seizures [15,16], there remains limited descriptions on the safety and
40 efficacy of this treatment modality in tumor patients in the acute post-operative period. Given the
41 striking advances in fields outside neuro-oncology, individualised TMS therapy merits
42 investigation to accelerate recovery trajectories post-craniotomy.

43

44 In this proof-of-concept study, we sought to establish the safety profile and ability to
45 recruit, enrol, and complete connectome-guided TMS to enhance network plasticity and promote
46 functional recovery following glioma surgery.

47

48 **Methods**

49 This study was approved by the Human Research Ethics Committee of the South Eastern Sydney
50 Local Health District (SESLHD). Patients provided written informed consent prior to enrolling
51 in our study. All methods were performed in accordance with relevant guidelines and regulations
52 Declaration of Helsinki. The clinical trial was registered at clinicaltrials.gov (NCT03293888).

53

54 ***Patient population***

55 Patients with supratentorial gliomas who developed a significant post-operative
56 neurological deficit related to motor or language function were invited to take part in an off-label
57 treatment of FDA-approved rTMS. Subjects were only included in this study if TMS was
58 initiated within two weeks post-surgery. Assessments for motor dysfunction were made using the
59 standard Medical Research Council (MRC) 5-point scale [17]. To be eligible for rTMS therapy,
60 weakness in an arm or leg needed to be 4-/5 or worse in the hand, proximal arm, foot or proximal

61 leg at the time of treatment. Language dysfunction was defined using the Aphasia Rapid Test
62 (ART) with a score greater than 3 considered evidence of significant language disturbance ^[18].

63

64 ***Clinical assessment and Definition of Outcomes***

65 Neurological assessments were performed immediately prior to treatment with rTMS and
66 one week following the last rTMS session by a blinded team member. Improvement in motor
67 function was defined as grade strength to at least 4+/5 in the affected limb, with either functional
68 hand control or the ability to walk with assistance in the leg. In cases of hemiplegia,
69 improvement in either hand or leg function was considered improvement. Finally, reduction in
70 the patient's pre-treatment ART score by 3 or more points was considered improvement in
71 language.

72

73 ***Connectome-based TMS target selection in neurosurgical patients***

74 Once recruited, participants underwent a T1-weighted MPRAGE and resting-state fMRI
75 scan. The cortical target was selected based on the patient's primary deficit (i.e. motor or
76 language), our interpretation of any network fragmentation, and our experience with network
77 topology from normative connectomes (i.e. HCP data) ^[7,19,20].

78

79 ***Imaging Acquisition and Pre-processing Parameters***

80 The resting-state fMRI was performed on a Phillips 3T Achieva which was acquired as a
81 T2-star EPI sequence, with $3 \times 3 \times 3$ -mm voxels, 128 volumes/run, a TE = 27 ms, a TR = 2.8 s, a
82 field of view = 256 mm, a flip angle = 90° and an 8 minute total run time. Resting-state and
83 diffusion pre-processing was performed using in-house custom machine learning algorithms in
84 Python. Standard image processing steps included skull stripping, motion correction with a 6-
85 dimensional rigid body registration, correcting for physiological noise (CompCor), slice time
86 correction, spatial smoothing (6 FWHM Gaussian kernel), high-pass filtering, and co-registration
87 to the patient's structural space¹. Of critical importance, we do not warp the brain into a standard
88 space like Montreal Neurological Institute (MNI) or Talairach space at any stage of the
89 processing. The patients then had a diffusion sequence acquired for subsequent connectivity
90 analyses from patient-specific multi-modal imaging data.

91

92 ***Machine-learning Aided Parcellation for Brain Tumours***

93 A fundamental challenge for interventional neurorehabilitation post-craniotomy is to
94 apply a parcellation scheme to highly-distorted anatomical brains. The Glasser HCP parcellation
95 scheme is a state-of-the art multi-modal neurobiological division of the cerebral cortex ^[21].
96 However, it was not designed to be applied to brains with large lesions and oedema. We aimed to
97 directly address this challenge by determining new HCP parcellation locations by using a
98 proprietary machine learning algorithm (Omniscient Technologies) –Figure 1 is the connectome
99 construction pipeline and Figure 2 represents sample outputs. Using a supervised machine
100 learning approach, we first trained our algorithms to identify each HCP parcel using network
101 connectivity from a normative dataset. Then, we applied our machine to identify the most
102 appropriate HCP parcels in brains after supratentorial tumour surgery based on the same input
103 imaging data. To our knowledge, this approach is unique in that previous studies have resolved
104 this issue by applying the HCP parcellation derived from healthy brains without any adjustment
105 to cortical topology.

106

107 ***Comparative Connectome Analyses***

108 To gain additional insight into network connectivity, we processed n=300 HCP
109 connectomes to serve as a reference of healthy canonical brain network organisation. Using this
110 normative data, we qualitatively compared healthy networks to those observed in patients with
111 lesions in particular areas. For example, we compared the normative visual areas to a patient
112 with hemianopia (Figure 3a) or normative language network topology with that of a patient with
113 aphasia (Figure 3b). This intra-network analysis enabled us to perform a hypothesis-driven
114 neuro-navigated rTMS target selection.

115

116 ***rTMS treatment paradigm***

117 The rTMS treatment was initiated within 1-2 weeks after standard awake glioma surgery.
118 We utilized theta burst stimulation (TBS) protocols in all patients. Details of the TMS protocol
119 and rationale available in the SI. We performed treatment five times per day over five
120 consecutive days. In between TMS sessions, patients underwent rehabilitative therapy.

121

122 ***Complications and Adverse Events***

123 All complications and side effects were noted after each rTMS session and one-week
124 post-treatment. Seizures were defined as any observable seizure or possible seizure-like activity
125 during the course of treatment. Neurological complications included any new or worsening of
126 neurological dysfunction measured by the ART and MRC Motor scale.

127

128 **Results**

129 ***Preliminary safety and recruitment data regarding rTMS treatment in neurosurgical patients.***

130 We successfully recruited 31/34 (91%) patients within two-weeks after glioma surgery
131 and treated them with rTMS. The median participant age was 58 years with 20 females and 14
132 males. 30 patients had WHO grade II-IV gliomas, while four patients had low grade gliomas. Of
133 all the participants, n=23 began rTMS therapy within a week of surgery, and n=31 began within
134 2 weeks of surgery. The remaining 3 participants underwent treatment at 2 months, 4 months and
135 12 months and excluded in the recruitment rate citing logistic concerns. In total, 31 participants
136 completed all planned treatment sessions with one participant missing one rTMS session due to a
137 rehabilitation bed becoming available the day of their last scheduled treatment. No participant
138 stopped therapy due to treatment intolerance. In 21 participants with a motor deficit, rTMS was
139 applied to the sensorimotor network with an improvement noted in 19 patients after one-week
140 following the last TMS session. In 13 participants with a language deficit, rTMS was applied to
141 the frontoparietal network with an improvement in 12 patients after one-week of the final
142 stimulation session.

143

144 ***Safety and preliminary efficacy of rTMS in neurosurgical patients***

145

146 No participants reported any general or partial seizures or seizure-like events during the
147 course of treatment and follow-up. Four patients reported transient headaches which resolved at
148 the end of each individual session. Light headedness (n=1) and nausea (n=1) was also reported
149 but resolved before the start of the next session. Transient tingling was reported at the site of
150 stimulation during stimulation onset, but also resolved immediately. These results are consistent
151 with well-documented side-effects during rTMS of non-craniotomy patients ^[13,16,22]. We noted

152 no worsening of neurological deficits and no other obvious side effects. The Supplemental
153 Digital Content is a video of a typical procedure; the participants consented to publication of
154 his/her image. Two brief clinical vignettes are presented below.

155

156 *Clinical Vignettes*

157

158 *Case 1:*

159 A woman (age 60-65) with a left parietal glioblastoma presented with preoperative
160 aphasia and near complete hemiplegia. Following resection, she developed complete expressive
161 aphasia and right hemiplegia. Connectome analyses revealed that her sensorimotor networks
162 were fragmented as two independent parcellations, likely due to the destruction of the callosal
163 fibers. Specifically, the injured side demonstrated satellite areas anterior to the dysfunctional
164 sensorimotor networks (Figure 4). Additionally, the left frontoparietal network revealed a clear
165 component of Broca's area, area 55b, and an SMA component. However, the temporal
166 component appeared to be less organized, appearing abnormal compared to normative data.
167 Thus, to potentially enhance functional recovery and address both delocalised networks, we
168 sought to select a stimulation target that would lead to enhanced network recruitment.

169

170 Beginning on post-operative day five, we performed five days of daily continuous TBS
171 (cTBS) to both the middle of the right sensorimotor network and the posterior frontal component
172 of the right frontoparietal network (both targets treated once per day). We then performed
173 intermittent TBS (iTBS) to the areas of scattered activation in the posterior left temporal lobe
174 and the areas near the abnormal sensorimotor regions. This treatment was well tolerated, and by
175 the end of the treatment, the patient was able to ambulate with a cane and speak in full sentences.
176 There were no serious complications, however, she had some persistent arm weakness.

177

178 *Case 2:*

179 A man (70-75 years of age) with a posterior left insular glioblastoma had moderate pre-
180 operative expressive aphasia that persisted post-surgery. Connectome analyses demonstrated
181 that his posterior temporal region was appropriately organized but did not co-activate within the
182 same network as Broca's area (Figure 5) [6]. Thus, we hypothesized that this was the result of

183 inactivation of the arcuate fasciculus fibers by the tumor or related to oedema. We also noted that
184 he was recruiting the right analog of Broca's area, as both regions were functionally co-activated.
185 As a result, we chose to perform accelerated (spaced-delivery of stimulation [23]) iTBS to the left
186 posterior temporal site to enhance the recruitment of additional connections for speech
187 improvement. This treatment began on post-operative day four. At the end day five of rTMS, his
188 speech markedly improved with no complications to report. Nevertheless, he persisted with
189 residual paraphasia after his therapy.

190

191 **Discussion**

192 In this study, we demonstrate the safety of rTMS post-craniotomy with the goal of
193 promoting functional recovery. Specifically, we demonstrate that no seizures were induced in 31
194 patients post-craniotomy and transient side effects were reported in 6 patients. This work
195 complements safety data from dozens of rTMS studies completed in non-craniotomy individuals
196 [24,25]. Despite the uncontrolled and open-label nature of the study, we cautiously interpret that
197 rTMS can potentially facilitate functional recovery post-craniotomy.

198 Similar results have been illustrated in acute and chronic stroke patients suggesting the
199 possible role of TMS as a therapeutic modality for a variety of clinical conditions to facilitate
200 motor and language improvement [14]. Given the widely demonstrated safety profile of TMS, it
201 would be a disservice not to further investigate the efficacy of technology to optimize post-
202 surgical clinical outcomes. To fully harness interventional neurorehabilitation's potential for
203 neuro-oncological care, additional research is required in two areas: target engagement and
204 stimulation protocol. Here, we elucidate the role of individualized TMS in standard inpatient
205 rehabilitation and discuss implications for future study on rTMS to optimize clinical outcomes.

206

207 ***Importance of Target Engagement and Stimulation Protocol***

208 There is a growing body of evidence suggesting that effective TMS targeting is critical
209 for success. For example, using image guidance to target rTMS improves efficacy [26].
210 Furthermore, targeting brain networks affected by disease-related processes is crucial for
211 functional improvement. Recently, Momi and colleagues delivered TMS pulses to two
212 frontoparietal nodes (prefrontal and parietal) to enhance fluid intelligence tasks [22] – adding
213 another research consideration on multi-nodal, rather than uni-nodal, stimulation. In addition, it

214 is likely that different patients with the same clinical deficit may need different target(s) [27].
215 Hence, there are many ways to interpret these observations, however, we advocate establishing
216 “the right target for the right patient” as being critical to successful interventional rehabilitation.
217

218 Similar to target engagement, *stimulation protocol* is another important variable to
219 consider. There are numerous different TMS protocols available for use. However, TBS
220 protocols are better suited for neurosurgical patients. First, the lower stimulus intensities used in
221 TBS likely have a lower seizure risk [28]. Second, TBS protocols achieve similar effects with
222 shorter treatment times (typically 8 minutes per session) compared to standard 30 minutes with
223 10 Hz TMS protocols. This enables the use of accelerated protocols (spaced-delivery of
224 stimulation sessions [23]) which are useful in treating patients in a subacute paradigm. Finally,
225 the stimulation effects of TBS is believed to last 45-60 mins which may fit better when
226 coordinating inter-session rehabilitation [29,30]. Our view is that while seizures are a concern,
227 given our clinical experience in managing this problem concomitant with the low occurrence rate
228 of this complication, there is now sufficient evidence to justify offering neurosurgical patients
229 rTMS.

230

231 **Connectome-based Stimulation for Cognitive Rehabilitation**

232 In this study, we primarily focused on ameliorating motor and language deficits post-
233 surgery in glioma patients. However, many patients experience cognitive deficits post-surgery
234 and there are no clear guidelines on how to help these patients. The multiple demand (MD)
235 system is a domain-general cognitive control network that acts as a skeleton for executing
236 cognitive tasks [3,7]. Systematically studying this system and the implications of its removal
237 during surgery would be useful for predicting post-operative cognitive trajectories [31]. More
238 broadly, despite motor or language deficits in our cohort, the qualitative fundamental motivation
239 to rehab greatly varied between our individuals [32]. An increasing line of evidence suggests that
240 increasing the motivation to expend cognitive effort, rather than enhancing cognitive networks
241 themselves, would be more effective in bolstering goal-directed behaviour [33]. Thus, if
242 frontostriatal circuitry can be mapped and effectively modulated post-craniotomy, this would be
243 a significant advancement and become important for other areas of neurosurgery, such as limbic
244 surgery [34].

245

246 ***Establishing a TMS Clinic for a Neurosurgical Practice***

247 While rTMS is a well-developed field with standard techniques, treating post-craniotomy
248 patients posed some unique challenges. First, the benefit of TMS early in the post-operative
249 period appears important [35]. Due to logistical issues, not all patients were able to return within
250 one week of surgery and returned within 14 days. However, there are important limits to early
251 TMS intervention in neurosurgical patients. Chiefly, given the small risk of inducing a seizure,
252 patients with significant swelling and/or midline shifts are not optimal candidates for rTMS.
253 Furthermore, patients with seizure history due to a tumour should be excluded from TMS until
254 more evidence of its safety in these circumstances are available. Despite these issues, we now
255 feel rTMS can be safely performed as part of standard inpatient rehabilitation.

256

257 ***rTMS Therapy for Stroke and Surgery***

258 The literature on the role of TMS in motor and language functional recovery is well-
259 established in stroke patients, providing most of our insight into the current benefits and
260 limitations of this therapeutic modality. Thus, certain themes from stroke neurology may
261 cautiously applied to neuro-oncological patients to guide therapeutic stimulation. For example,
262 cerebral inflammation and angiogenesis are two of multiple overlapping processes between
263 glioma surgery and cerebral ischemic stroke pathways [36]. A recent meta-analysis on 841
264 patients across 20 randomized controlled trials (RCTs) demonstrates that rTMS is beneficial to
265 the treatment of post-stroke hemiplegia, especially in: lower limb functioning, grip strength, and
266 attenuating stroke severity [15]. Interestingly, cortical reorganization can be observed between
267 primary motor and secondary motor cortices in stroke patients to facilitate improved motor
268 functioning, leading authors to suggest the need for future customized TMS applications based
269 on the newly activated cortical pathways in these stroke patients [37]. Similar cortical re-
270 organization has also been demonstrated to facilitate language functioning following ischemic
271 stroke [38]. Thus, following iatrogenic injury due to tumor resection, it is likely that similar
272 cortical pathways responsible for motor functioning and motor learning can also be strengthened
273 with rTMS given they too demonstrate plasticity following tumor growth [39,40].

274

275 rTMS likely provides additional benefits in many patients following tumor resection,
276 while being precluded from some stroke patients, due to certain temporal factors which are
277 known to affect plasticity. For instance, certain gliomas may cause slower changes in cerebral
278 connections and therefore affect connectome plasticity differently compared to acutely damaging
279 stroke lesions[39]. Unfortunately, acute brain damage due to stroke often causes more localized
280 neuronal cell death and subsequent unimodular cortical organization [8]. This type of damage
281 may demonstrate less capacity for cerebral reorganisation compared to slow growing tumors (ie,
282 low-grade gliomas, LGG), which disrupts greater amounts of cortex but provides more
283 opportunity for functional reorganization possibly due to less abrupt, initial neuronal death [8].
284 Thus, even more importantly in tumor patients, individualized connectomic approaches can be
285 implemented before rTMS to identify any on-going network reorganization occurring from the
286 lesion and ultimately facilitate motor and language preservation or compensation. This would
287 enable an updated understanding of network connectivity which can be applied to effectively
288 target and strengthen formerly silent polysynaptic cortical pathways following tumor resection
289 [14,40]. Indeed, our study shows that intra-network analyses can *safely* enable hypothesis-driven
290 neuro-navigated rTMS target selections.

291
292 While the applications of TMS between stroke and surgical patients have not been
293 compared, their respective methods may differ and therefore preclude certain benefits which
294 have been demonstrated specifically in ischemic stroke patients. Unfortunately, no studies were
295 able to be identified which looked at post-surgical rehabilitation utilizing individualized rTMS
296 treatment. Most surgical studies incorporating TMS have confined their uses to intra-operative
297 functional mapping (ie, language mapping) [41]. The only post-surgical application of rTMS
298 identified investigated its ability to reduce pain following gastric bypass surgery [42].
299 Nonetheless, in stroke patients, the effects produced by TMS correlates with the specific TMS
300 protocol applied [14]. Specifically, a TBS protocol of 50 Hz with 80% of active motor threshold
301 intensity is believed to modulate motor learning through effects similar long-term potentiation
302 (LTP) and long-term depression (LTD), and has been applied in numerous stroke trials [14,43]. Our
303 study utilized bursts of 3 pulses delivered with a repetition rate of 50 Hz at 80% of motor
304 threshold for 400 continuous (cTBS) or intermittent (iTBS) trains. Still, while our protocol is
305 similar to those described for ischemic stroke patients and we too observed improvements in

306 language and motor functioning, possible differences in neuroplasticity as identified by
307 neurocomputational models between glioma and stroke patients suggests that specific rTMS
308 protocols may produce different cortical changes and subsequent functional recovery based on
309 the type cortical injury.

310

311 ***Future Directions for Interventional Neurorehabilitation***

312 With the rapid advancements made in imaging and stimulation technologies [32], the
313 future is bright to continuously evolve the concept of interventional neurorehabilitation for
314 neuro-oncology. Importantly, pre-operatively predicting which patients will require post-
315 operative interventional support or predicting which patients will best respond to and benefit
316 from rTMS as a therapeutic adjunct would be highly valuable. rTMS treatment causes changes in
317 electroencephalographic (EEG) assessed- functional connectivity (FC) that correlates well with
318 clinical outcomes in certain patients. Thus, EEG-FC measures can provide accurate, early,
319 biomarkers to guide personalized clinical decisions for long-term rTMS treatments or not,
320 possibly saving hospital costs while improving patient quality of life over time [44]. A machine
321 learning algorithm can accurately predict (83%) which patients with major depressive disorder
322 (MDD) will respond to long-term rTMS treatment in just the first rTMS session [45]. Similar
323 studies have not been extended into the perioperative setting, but numerous studies have
324 established the role of TMS and fMRI data as biomarkers to predict motor recovery following
325 stroke, warranting further investigation following neuro-oncological resection [46,47]. Lastly,
326 interventional neurorehabilitation can also be utilised in other patient populations following
327 stroke-induced pain or movement disorders [48-50]

328 With rising open science and international collaborative efforts, prospective registry-
329 based clinical studies could be employed to overcome heterogeneous glioma populations and
330 derive more practical outcomes.

331

332 ***Study Limitations***

333 This study, however, is not without key limitations. First, the uncontrolled and early-
334 nature of our intervention raises the possibility whether these patients would have improved
335 without treatment. Now that we have established the TMS safety profile and recruitment rate for
336 this complex patient population, future trials should employ prospective, randomised, double-

337 blinded active- and sham-controlled TMS to determine the efficacy of improving recovery
338 trajectories. While glioma patients are highly heterogenous given different tumors, different
339 degrees of cortical reorganisation, and different resections completed, strict inclusion criteria and
340 multi-site collaborations can overcome such limitations. An alternative approach would be to
341 conduct large-scale international prospective registry-based studies. Finally, we did not acquire
342 long-term outcome data in these patients. Nevertheless, qualitatively, all patients reported they
343 would undergo TMS therapy again and found that it assisted with their rehabilitative efforts.
344 Despite these limitations, our primary aim was to establish the safety profile and recruitment rate
345 for TMS post-craniotomy.

346

347 **Conclusion**

348 In conclusion, we present a proof-of-concept of ‘interventional neurorehabilitation’ for
349 neuro-oncological clinicians to take charge in driving cortical reorganisation and functional
350 recovery. Specifically, we demonstrate the safety profile and recruitment rate for connectome-
351 based TMS acutely post-surgery for glioma patients. Given the clear enthusiasm from our
352 patients, we believe that TMS treatment is of low-risk, well-tolerated, and could be of immense
353 therapeutic benefit.

354

355

356

357 **REFERENCES**

- 358 1 Bullmore, E. & Sporns, O. Complex brain networks: graph theoretical analysis of
359 structural and functional systems. *Nat Rev Neurosci* **10**, 186-198, doi:10.1038/nrn2575
360 (2009).
- 361 2 Sporns, O. (The MIT Press, 2010).
- 362 3 Duncan, J. The multiple-demand (MD) system of the primate brain: mental programs for
363 intelligent behaviour. *Trends Cogn Sci* **14**, 172-179, doi:10.1016/j.tics.2010.01.004
364 (2010).
- 365 4 van den Heuvel, M. P. & Sporns, O. A cross-disorder connectome landscape of brain
366 dysconnectivity. *Nat Rev Neurosci* **20**, 435-446, doi:10.1038/s41583-019-0177-6 (2019).
- 367 5 Hart, M. G., Romero-Garcia, R., Price, S. J. & Suckling, J. Global Effects of Focal Brain
368 Tumors on Functional Complexity and Network Robustness: A Prospective Cohort
369 Study. *Neurosurgery* **84**, 1201-1213, doi:10.1093/neuros/nyy378 (2019).
- 370 6 Poologaindran, A., Suckling, J. & Sughrue, M. E. Letter: Elucidating the Principles of
371 Brain Network Organization Through Neurosurgery. *Neurosurgery* **87**, E80-E81,
372 doi:10.1093/neuros/nyaa094 (2020).

- 373 7 Poologaindran, A., Lowe, S. R. & Sughrue, M. E. The cortical organization of language:
374 distilling human connectome insights for supratentorial neurosurgery.
- 375 8 Keidel, J. L., Welbourne, S. R. & Lambon Ralph, M. A. Solving the paradox of the
376 equipotential and modular brain: A neurocomputational model of stroke vs. slow-
377 growing glioma. *Neuropsychologia* **48**, 1716-1724,
378 doi:<https://doi.org/10.1016/j.neuropsychologia.2010.02.019> (2010).
- 379 9 Cui, Z. *et al.* Individual Variation in Functional Topography of Association Networks in
380 Youth. *Neuron* **106**, 340-353 e348, doi:10.1016/j.neuron.2020.01.029 (2020).
- 381 10 Finn, E. S. *et al.* Functional connectome fingerprinting: identifying individuals using
382 patterns of brain connectivity.
- 383 11 Beaty, R. E. *et al.* Robust prediction of individual creative ability from brain functional
384 connectivity. *Proc Natl Acad Sci U S A* **115**, 1087-1092, doi:10.1073/pnas.1713532115
385 (2018).
- 386 12 Grossman, N. *et al.* Noninvasive Deep Brain Stimulation via Temporally Interfering
387 Electric Fields. *Cell* **169**, 1029-1041 e1016, doi:10.1016/j.cell.2017.05.024 (2017).
- 388 13 Brunoni, A. R. *et al.* Repetitive Transcranial Magnetic Stimulation for the Acute
389 Treatment of Major Depressive Episodes: A Systematic Review With Network Meta-
390 analysis. *JAMA Psychiatry* **74**, 143-152, doi:10.1001/jamapsychiatry.2016.3644 (2017).
- 391 14 Hoyer, E. H. & Celnik, P. A. Understanding and enhancing motor recovery after stroke
392 using transcranial magnetic stimulation. *Restor Neurol Neurosci* **29**, 395-409,
393 doi:10.3233/RNN-2011-0611 (2011).
- 394 15 He, Y., Li K Fau - Chen, Q., Chen Q Fau - Yin, J., Yin J Fau - Bai, D. & Bai, D.
395 Repetitive Transcranial Magnetic Stimulation on Motor Recovery for Patients With
396 Stroke: A PRISMA Compliant Systematic Review and Meta-analysis.
- 397 16 Lefaucheur, J. P. *et al.* Evidence-based guidelines on the therapeutic use of repetitive
398 transcranial magnetic stimulation (rTMS).
- 399 17 Brain, M. R. C. G. o. *Aids to the Examiantion of the Peripheral Nervous System.*
400 (Balliere Tindall, 1986).
- 401 18 Azuar, C. *et al.* The Aphasia Rapid Test: an NIHSS-like aphasia test. *J Neurol* **260**, 2110-
402 2117, doi:10.1007/s00415-013-6943-x (2013).
- 403 19 Romero-Garcia, R. *et al.* Practical Application of Networks in Neurosurgery: Combined
404 3-Dimensional Printing, Neuronavigation, and Preoperative Surgical Planning. *World*
405 *Neurosurg* **137**, e126-e137, doi:10.1016/j.wneu.2020.01.085 (2020).
- 406 20 Briggs, R. G. *et al.* A Connectomic Atlas of the Human Cerebrum-Chapter 18: The
407 Connectional Anatomy of Human Brain Networks. *Oper Neurosurg (Hagerstown)* **15**,
408 S470-S480, doi:10.1093/ons/opy272 (2018).
- 409 21 Glasser, M. F. *et al.* A multi-modal parcellation of human cerebral cortex. *Nature* **536**,
410 171-178, doi:10.1038/nature18933 (2016).
- 411 22 Momi, D. *et al.* Cognitive Enhancement via Network-Targeted Cortico-cortical
412 Associative Brain Stimulation. *Cereb Cortex* **30**, 1516-1527, doi:10.1093/cercor/bhz182
413 (2020).
- 414 23 Cole, E. J. *et al.* Stanford Accelerated Intelligent Neuromodulation Therapy for
415 Treatment-Resistant Depression. *Am J Psychiatry* **177**, 716-726,
416 doi:10.1176/appi.ajp.2019.19070720 (2020).
- 417 24 Di Iorio, R. & Rossini, P. M. in *Navigated Transcranial Magnetic Stimulation in*
418 *Neurosurgery* (ed Sandro M. Krieg) 67-83 (Springer International Publishing, 2017).

- 419 25 Rossi, S., Hallett, M., Rossini, P. M. & Pascual-Leone, A. Safety, ethical considerations,
420 and application guidelines for the use of transcranial magnetic stimulation in clinical
421 practice and research.
- 422 26 Ahdab, R., Ayache, S. S., Brugieres, P., Goujon, C. & Lefaucheur, J. P. Comparison of
423 "standard" and "navigated" procedures of TMS coil positioning over motor, premotor and
424 prefrontal targets in patients with chronic pain and depression. *Neurophysiol Clin* **40**, 27-
425 36, doi:10.1016/j.neucli.2010.01.001 (2010).
- 426 27 Drysdale, A. T. *et al.* Erratum: Resting-state connectivity biomarkers define
427 neurophysiological subtypes of depression. *Nat Med* **23**, 264, doi:10.1038/nm0217-264d
428 (2017).
- 429 28 Oberman, L., Edwards, D., Eldaief, M. & Pascual-Leone, A. Safety of theta burst
430 transcranial magnetic stimulation: a systematic review of the literature. *J Clin*
431 *Neurophysiol* **28**, 67-74, doi:10.1097/WNP.0b013e318205135f (2011).
- 432 29 Wischniewski, M. & Schutter, D. J. Efficacy and Time Course of Theta Burst Stimulation
433 in Healthy Humans. *Brain Stimul* **8**, 685-692, doi:10.1016/j.brs.2015.03.004 (2015).
- 434 30 Wilson, M. T. *et al.* Biophysical modeling of neural plasticity induced by transcranial
435 magnetic stimulation. *Clin Neurophysiol* **129**, 1230-1241,
436 doi:10.1016/j.clinph.2018.03.018 (2018).
- 437 31 Briggs, R. G. *et al.* The Frontal Aslant Tract and Supplementary Motor Area Syndrome:
438 Moving towards a Connectomic Initiation Axis. *Cancers* **13**,
439 doi:10.3390/cancers13051116 (2021).
- 440 32 Satterthwaite, T. D., Xia, C. H. & Bassett, D. S. Personalized Neuroscience: Common
441 and Individual-Specific Features in Functional Brain Networks. *Neuron* **98**, 243-245,
442 doi:<https://doi.org/10.1016/j.neuron.2018.04.007> (2018).
- 443 33 Westbrook, A. *et al.* Dopamine promotes cognitive effort by biasing the benefits versus
444 costs of cognitive work. *Science* **367**, 1362-1366, doi:10.1126/science.aaz5891 (2020).
- 445 34 Hurwitz, T. A., Honey, C. R., McLeod, K. R., Poologaindran, A. & Kuan, A. J.
446 Hypoactivity in the Paraterminal Gyrus Following Bilateral Anterior Capsulotomy. *Can J*
447 *Psychiatry* **65**, 46-55, doi:10.1177/0706743719874181 (2020).
- 448 35 Volz, L. J. *et al.* Shaping Early Reorganization of Neural Networks Promotes Motor
449 Function after Stroke. *Cereb Cortex* **26**, 2882-2894, doi:10.1093/cercor/bhw034 (2016).
- 450 36 Ghosh, M. K., Chakraborty, D., Sarkar, S., Bhowmik, A. & Basu, M. The
451 interrelationship between cerebral ischemic stroke and glioma: a comprehensive study of
452 recent reports. *Signal Transduction and Targeted Therapy* **4**, 42, doi:10.1038/s41392-
453 019-0075-4 (2019).
- 454 37 Sharma, N., Baron, J.-C. & Rowe, J. B. Motor imagery after stroke: relating outcome to
455 motor network connectivity. *Ann Neurol* **66**, 604-616, doi:10.1002/ana.21810 (2009).
- 456 38 Hamilton, R., Keenan Jp Fau - Catala, M., Catala M Fau - Pascual-Leone, A. & Pascual-
457 Leone, A. Alexia for Braille following bilateral occipital stroke in an early blind woman.
- 458 39 Kong, N. W., Gibb, W. R. & Tate, M. C. Neuroplasticity: Insights from Patients
459 Harboring Gliomas. *Neural Plast* **2016**, 2365063-2365063, doi:10.1155/2016/2365063
460 (2016).
- 461 40 Kawashima, A. *et al.* Plastic reshaping of cortical language areas evaluated by navigated
462 transcranial magnetic stimulation in a surgical case of glioblastoma multiforme.
- 463 41 Ille, S. *et al.* Resection of highly language-eloquent brain lesions based purely on rTMS
464 language mapping without awake surgery.

- 465 42 Borckardt Jj Fau - Reeves, S. T. *et al.* Fast left prefrontal rTMS reduces post-gastric
466 bypass surgery pain: findings from a large-scale, double-blind, sham-controlled clinical
467 trial.
- 468 43 Huang, Y. Z., Edwards Mj Fau - Rounis, E., Rounis E Fau - Bhatia, K. P., Bhatia Kp Fau
469 - Rothwell, J. C. & Rothwell, J. C. Theta burst stimulation of the human motor cortex.
470 44 Voigt, J., Carpenter, L. & Leuchter, A. Cost effectiveness analysis comparing repetitive
471 transcranial magnetic stimulation to antidepressant medications after a first treatment
472 failure for major depressive disorder in newly diagnosed patients - A lifetime analysis.
473 *PLoS One* **12**, e0186950-e0186950, doi:10.1371/journal.pone.0186950 (2017).
- 474 45 Corlier, J. *et al.* Changes in Functional Connectivity Predict Outcome of Repetitive
475 Transcranial Magnetic Stimulation Treatment of Major Depressive Disorder. *Cerebral*
476 *cortex (New York, N.Y. : 1991)* **29**, 4958-4967, doi:10.1093/cercor/bhz035 (2019).
- 477 46 Boyd, L. A. *et al.* Biomarkers of stroke recovery: Consensus-based core
478 recommendations from the Stroke Recovery and Rehabilitation Roundtable. *Int J Stroke*
479 **12**, 480-493, doi:10.1177/1747493017714176 (2017).
- 480 47 Kim, B. & Winstein, C. Can Neurological Biomarkers of Brain Impairment Be Used to
481 Predict Poststroke Motor Recovery? A Systematic Review.
- 482 48 Ren, H. *et al.* Application of Structural and Functional Connectome Mismatch for
483 Classification and Individualized Therapy in Alzheimer Disease. *Frontiers in Public*
484 *Health* **8**, 720 (2020).
- 485 49 Ivanishvili Z, Poologaindran A, Honey CR. Cyclization of motor cortex stimulation for
486 neuropathic pain: a prospective, randomized, blinded trial. *Neuromodulation*.
487 2017;20(5):497-503.
- 488 50 Slotty PJ, Poologaindran A, Honey CR. A prospective, randomized, blinded assessment of
489 multitarget thalamic and pallidal deep brain stimulation in a case of hemidystonia. *Clin*
490 *Neurol Neurosurg*. 2015;138:16-19.

491
492

493 **Acknowledgements:** AP is funded through a Turing Doctoral Scholarship from the Alan Turing
494 Institute and the National Science and Engineering Research Council of Canada. RRG is
495 supported by a *Guarantors of Brain* Fellowship.

496

497 **Financial Disclosures:** IMY is an employee of Cingulum Health. MES is the chief medical
498 officer of Omniscient and a shareholder of Cingulum Health. CT is a consultant for Aesculap.

499 All other authors report no conflict of interest related to this study.

500

501

502 **Author Contributions:** Conceptualization, AP, IMY and MES; Data curation, CP, IMY;
503 Formal analysis, AP, IMY.; Methodology, AP, RGB, MES; Project administration, IMY, CT.

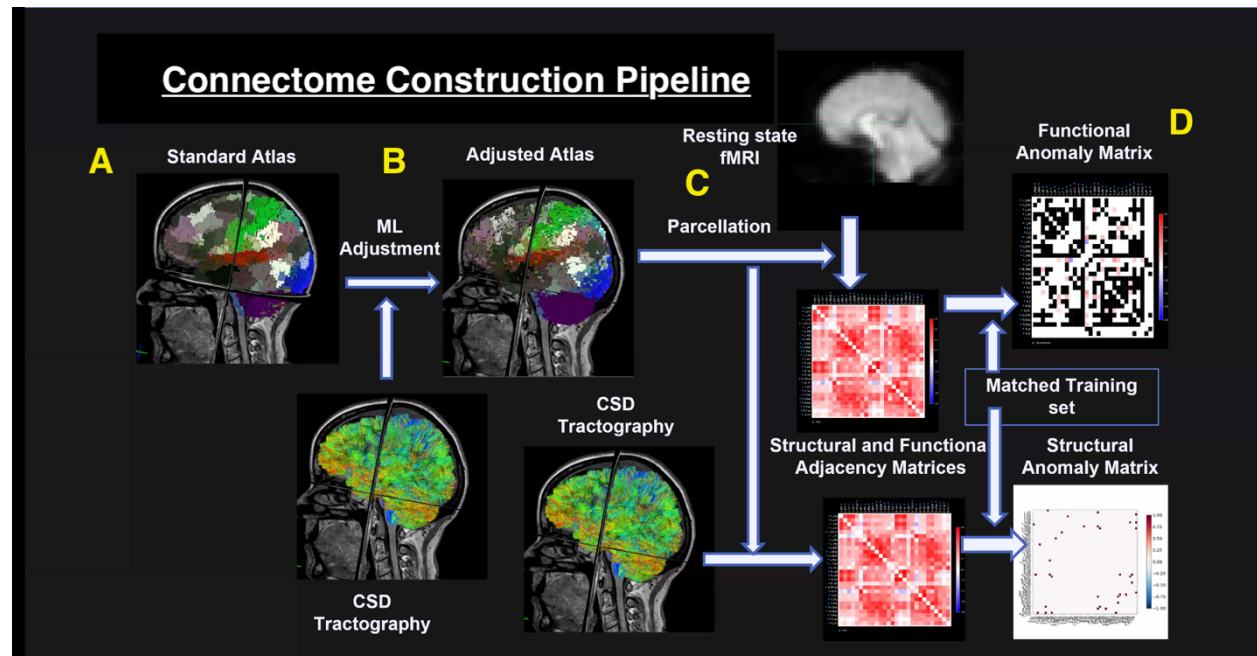
504 and M.E.S.; Software SAA, KC, RRG; Writing—original draft, AP.; Writing—review and
505 editing, NBD, RRG, JS, MES.

506
507
508
509
510

FIGURE LEGENDS

511 **Figure 1:** The connectome construction pipeline used in this study. A) A standard Glasser atlas
512 was established using 300 healthy individuals from the Human Connectome Project (HCP). A
513 supervised machine learning algorithm was employed to recognise connectivity patterns for each
514 of the 360 HCP parcels in a healthy cohort. B) Using diffusion sequences, we applied
515 constrained spherical deconvolution (CSD) tractography to our patient cohort. Using these
516 images, our algorithm was applied to recognise and adjust the locations of HCP parcels in highly
517 atypical brains. C) After establishing maximal likely structural connectivity, we used this data to
518 inform and constrain functional connectivity using resting-state fMRI. D) Finally, structural and
519 functional anomaly matrices were generated to compare network connectivity differences (i.e.
520 language) between our patient and a normative atlas. Adopted with permission from Reference
521 [48].

522

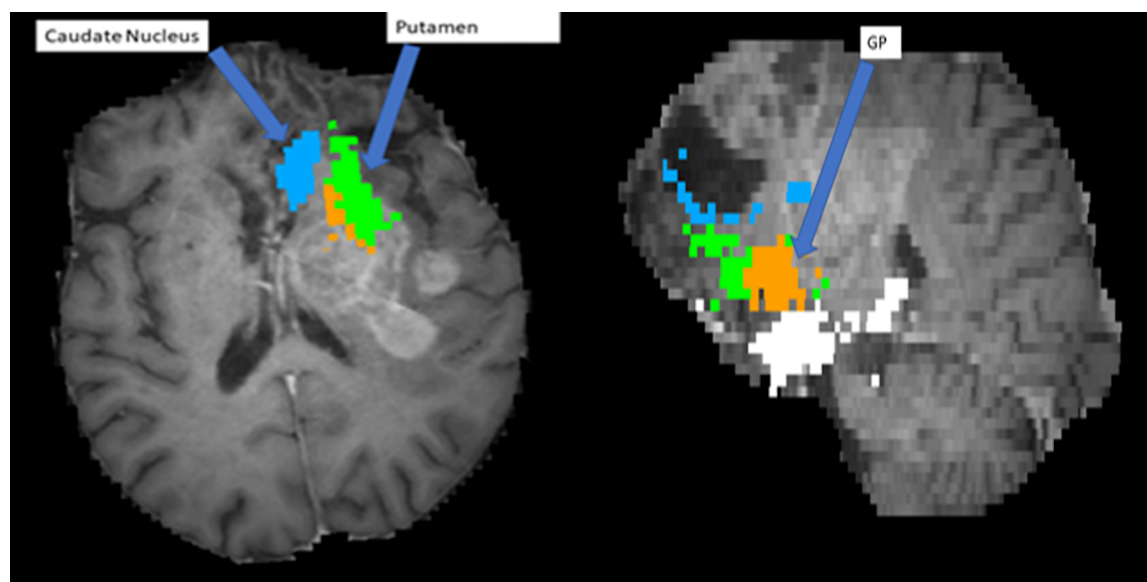


523

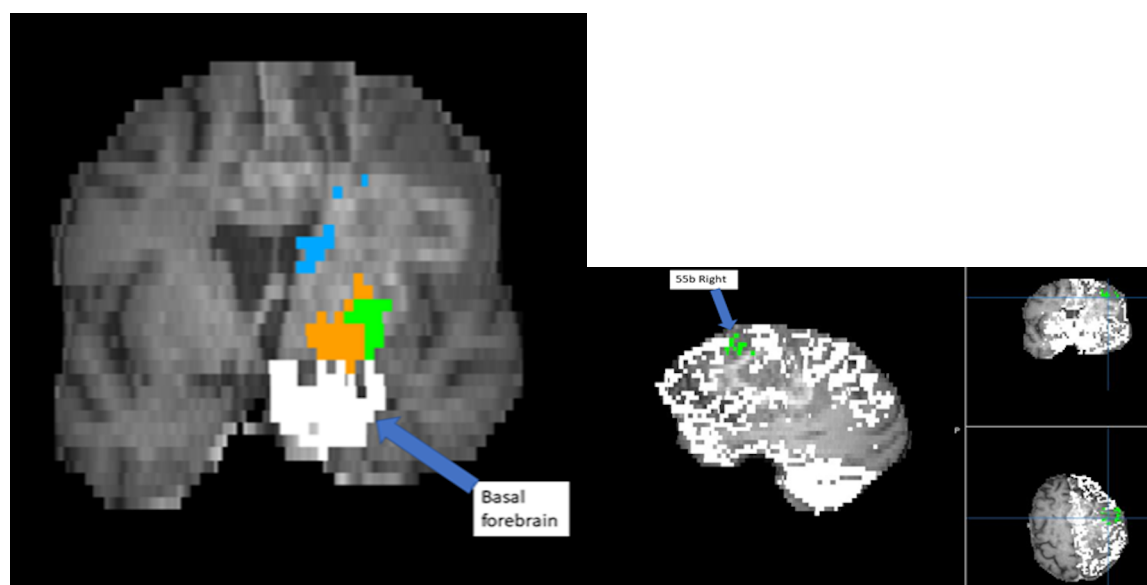
524

525

526 **Figure 2:** Demonstration of proprietary machine learning algorithm (Omniscient) that assigns
527 parcellations to very distorted brains. Patient with a frontal lobe GBM and resected regions
528 resulting in total anterior brain shift. Figure 2a displays the modified location of the caudate
529 nucleus and the putamen. Figure 2b displays the modified location of the GP. Figure 2c displays
530 the modified location of the basal forebrain. Figure 2d displays the modified location of right 55b
531 parcellation. Figure 2e displays the modified location of the right PBelt. This allows for the
532 creation of a connectivity matrix of any brain despite .



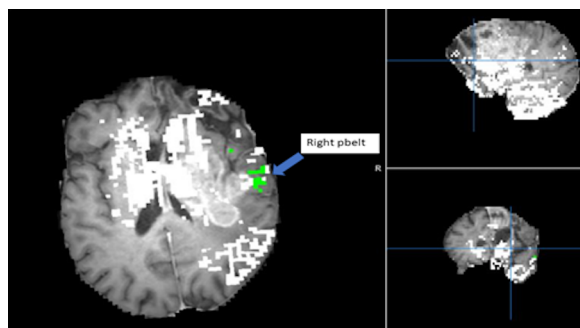
533



534

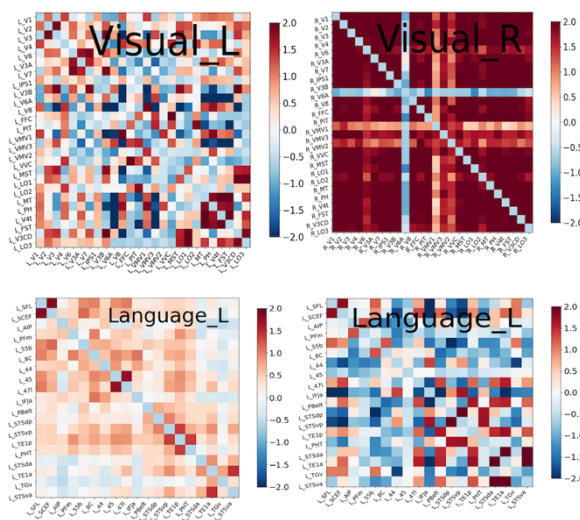
535

536



537
538
539
540
541
542
543
544
545
546
547
548
549
550
551
552

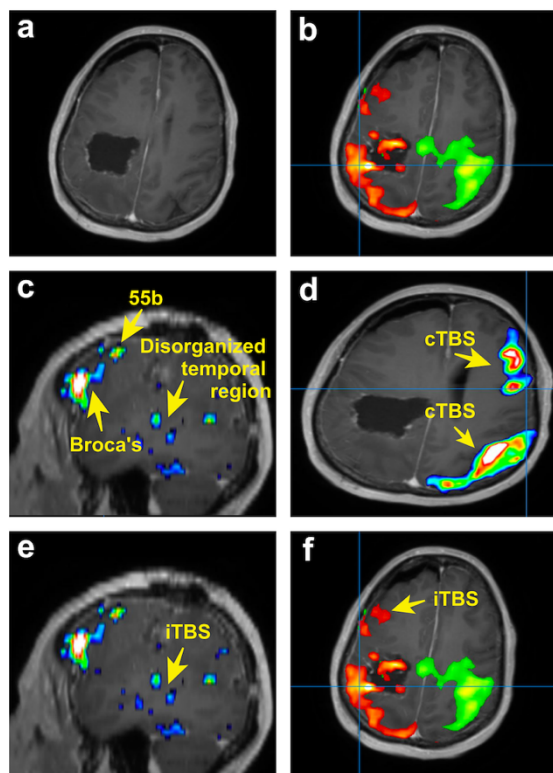
Figure 3: 3a compares connectivity matrices of the left and right visual networks in a patient with hemianopia. The left visual network is dotted mostly *blue*, which means that areas of the visual system are not well synchronized to one another. By comparison, the right visual network displays strong intra-network connectivity. Figure 3b compares the connectivity matrix of the language area of a healthy control on the left with the language area connectivity of an aphasic patient on the right. This aphasic matrix has the parcellations within the language system anticorrelated, therefore, predominantly *blue*, suggestion loss of connectivity within the language network. Note that columns 55b, 45 and STSdp are blue representing that they are isolated. We hypothesized that this is in part due to problems with the superior longitudinal fasciculus/ arcuate fasciculus system which links different components of the language system⁷. Conducting connectomics analysis by comparing connectivity matrices enables us to generate potential targets for TMS treatment.



553
554

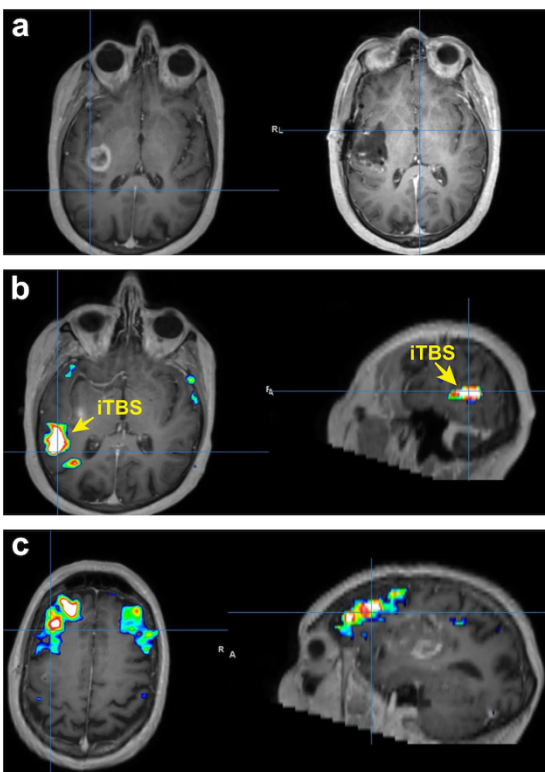
555
556
557
558
559
560
561
562
563
564
565
566
567

Figure 4: TMS strategy for patient presenting with aphasia and near complete hemiplegia secondary to glioblastoma. (a) Postoperative MRI of patient demonstrating resection cavity. (b) Independent right sided (green) and left sided (orange) sensorimotor networks. Although presented on the same image, these networks appeared as separate networks on connectomic analysis. The anterior satellite areas in the left (orange) dysfunctional sensorimotor network. (c) Left frontoparietal network demonstrating clear Broca's area and area 55b. The temporal component of the network is disorganized. (d) cTBS was administered to both the middle of the sensorimotor network and the right posterior frontal component of the right frontoparietal network. (e) iTBS was administered to the disorganized temporal component of the left frontoparietal network and the (f) anterior areas of the pathological left sensorimotor network.



568
569
570

571 **Figure 5:** TMS strategy for patient presenting with moderate expressive aphasia secondary to
572 glioblastoma. (a) Preoperative MRI (left) demonstrating left insula glioblastoma and
573 postoperative MRI (right) demonstrating complete resection. (b) Network analysis demonstrating
574 a strongly organized posterior temporal region that is not in in the same network as Broca's area.
575 This was the area that was selected for treatment with iTBS. (c). Further network analysis
576 demonstrating Broca's area with bilateral representation that is not in the same network as the
577 posterior temporal region.



578
579
580
581
582
583
584
585
586
587

Supplemental Digital Content: This video expands on the TMS technique described in the Methods. The video illustrates patient set-up, patient registration, measuring motor threshold, and TMS treatment. The participants consented to publication of his/her image.

https://www.dropbox.com/s/prp7dm3h7bsgm62/TMS_Demonstration_Video.mp4?dl=0

588

589

590

591

592