

1 **Reactive vaccination of workplaces and schools against COVID-19**

2 Benjamin Faucher¹, Rania Assab¹, Jonathan Roux², Daniel Levy-Bruhl³, Cécile Tran Kiem^{4,5},
3 Simon Cauchemez⁴, Laura Zanetti⁶, Vittoria Colizza¹, Pierre-Yves Boëlle¹, Chiara Poletto¹

4 ¹Sorbonne Université, INSERM, Institut Pierre Louis d'Epidémiologie et de Santé Publique, F75012, France

5 ²Univ Rennes, EHESP, REPERES « Recherche en Pharmaco-Epidémiologie et Recours aux Soins » – EA 7449,
6 15 avenue du Professeur-Léon-Bernard, CS 74312, 35043 Rennes, France

7 ³Santé Publique France, Saint Maurice, France

8 ⁴Mathematical Modelling of Infectious Diseases Unit, Institut Pasteur, Université de Paris, UMR2000, CNRS, Paris,
9 France

10 ⁵Collège Doctoral, Sorbonne Université, Paris, France

11 ⁶Haute Autorité de Santé, Saint-Denis, France

12

13

14 Corresponding author: Chiara Poletto (chiara.poletto@inserm.fr)

15

16

17

18 **Abstract**

19 As vaccination against COVID-19 stalls in some countries, increased accessibility and more
20 adaptive approaches may be useful to keep the epidemic under control. Here, we study the
21 impact of reactive vaccination targeting schools and workplaces where cases are detected,
22 with an agent-based model accounting for COVID-19 natural history, vaccine characteristics,
23 individuals' demography and behaviour and social distancing. At an equal number of doses
24 reactive vaccination produces a higher reduction in cases compared with non-reactive
25 strategies, in the majority of scenarios. However, at high initial vaccination coverage or low
26 incidence, few people are found to vaccinate around cases, thus the reactive strategy may be
27 less effective than non-reactive strategies with moderate/high vaccination pace. In case of
28 flare-ups, reactive vaccination could hinder spread if it is implemented quickly, is supported by
29 enhanced test-trace-isolate and triggers an increased vaccine uptake. These results provide
30 key information to plan an adaptive vaccination deployment.

31

32

33

34 **Introduction**

35 Vaccination against SARS-CoV-2 has changed the course of the COVID-19 pandemic thanks

36 to the high effectiveness of available vaccines in preventing infection and severe forms of the
37 disease. Still, several months into the vaccination campaign vaccine uptake remains below
38 official targets in many Western countries due to logistical issues, vaccine accessibility and/or
39 hesitancy. As of Fall 2021, less than 60% of the population in the United States and Europe
40 was fully vaccinated¹. With intense virus circulation still ongoing in many regions of the world
41 due to the Delta variant and the threat posed by emerging variants, it is important to
42 investigate if vaccine use could improve with adaptive delivery. Indeed, proposing vaccination
43 to individuals who were exposed to the virus allows targeting those at higher risk of infection
44 and, furthermore, might help overcome barriers to vaccination^{2,3} since vaccine-hesitant
45 people are more likely to accept vaccination when the perceived risk of infection is higher⁴.

46 Redirecting vaccine supplies to geographic areas of highest incidence (or hotspot
47 vaccination) is already part of some European countries' plans and was implemented to
48 combat the emergence of variant Delta². But other reactive vaccination schemes are
49 possible, such as ring vaccination that targets contacts of confirmed cases or contacts of
50 those contacts, or vaccination in workplaces or schools where cases have been detected.
51 This could potentially improve vaccine impact by preventing transmission where it is active
52 and even enable the efficient management of flare-ups. For outbreaks of smallpox or Ebola
53 fever, ring vaccination has proved effective to rapidly curtail the spread of cases⁵⁻⁸. However,
54 the experience of these past epidemics cannot be transposed directly to COVID-19 due to the
55 many differences in the infection characteristics and epidemiological context. For example,
56 COVID-19 cases are infectious a few days before symptom onset⁹, but generally detected a
57 few days later. This means they may have had time to infect their direct contacts, preventing
58 the effectiveness of ring vaccination to prevent secondary cases. Vaccinating an extended
59 network of contacts, as could be done with the vaccination of whole workplaces or schools,
60 would have a larger impact, especially if adopted in combination with strengthened protective
61 measures to slow down transmission, such as masks, physical distancing, and contact
62 tracing. This could be feasible in many countries, leveraging the established test-trace-isolate
63 (TTI) system that enables prompt detection of clusters of cases to inform where vaccines
64 should be deployed. Properly assessing the interest of reactive vaccination therefore requires
65 to consider in detail the interactions of vaccine characteristics, pace of vaccination, COVID-19
66 natural history, case detection practices and overall changes in human contact behaviour.

67 We therefore extend an agent-based model that has been previously described¹⁰ to quantify
68 the impact of a reactive vaccination strategy targeting workplaces, universities and 12+ years
69 old in schools where cases have been detected. We compare the impact of reactive
70 vaccination with non-reactive vaccination targeting similar settings or with mass vaccination,
71 and test these strategies alone and in combination. We explore differences in vaccine
72 availability and logistic constraints, and assess the influence of the dynamic of the epidemic

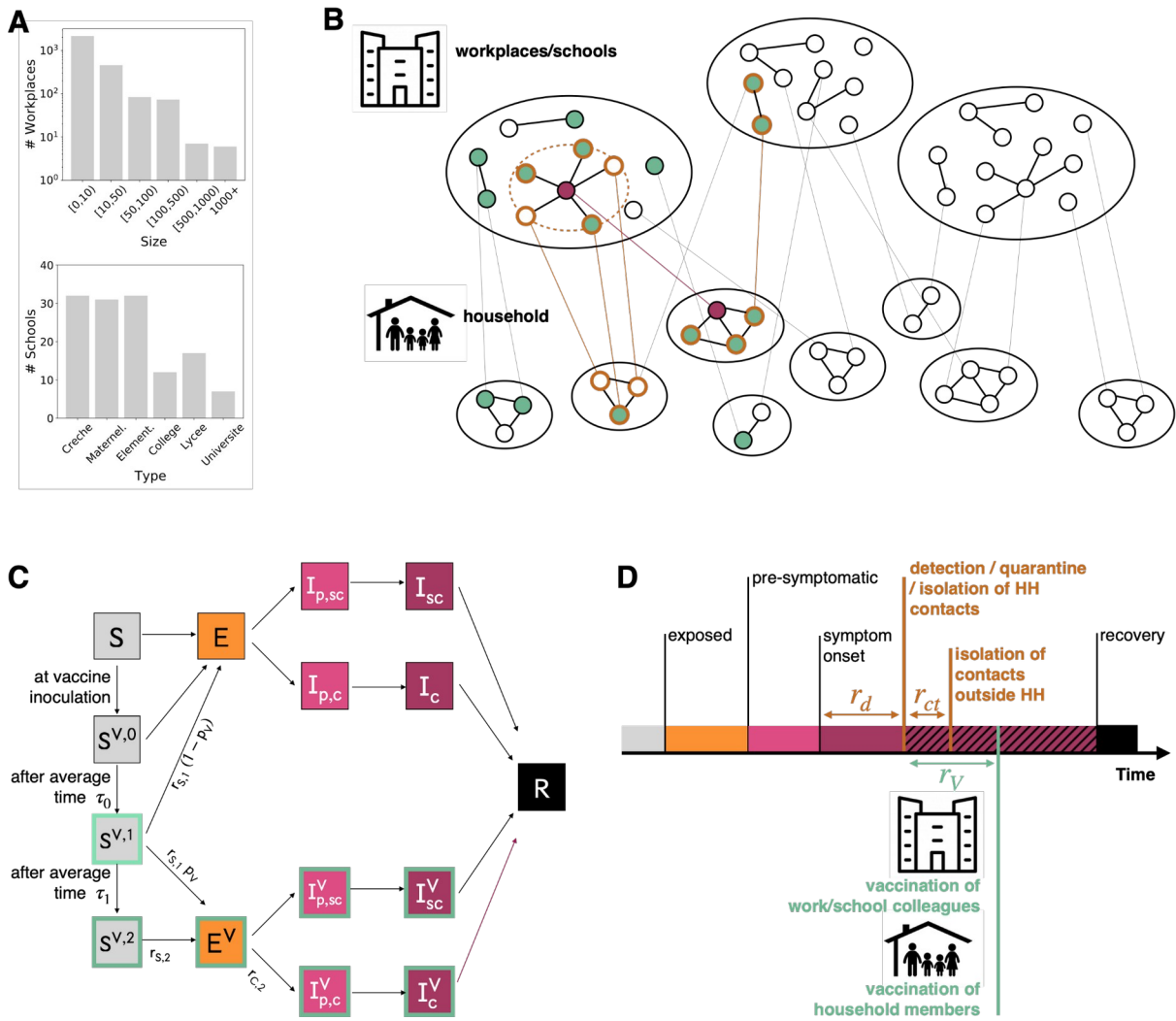
73 and different stages of the vaccination campaign.

74 **Results**

75 **Mass vaccination, targeted, and reactive vaccination strategies**

76 We extend a previously described SARS-CoV-2 transmission model ¹⁰ to simulate vaccine
77 administration, running in parallel with other interventions - i.e. contact tracing, teleworking
78 and social restrictions. Following similar approaches ¹¹⁻¹⁴, the model is stochastic and
79 individual based. It takes as input a synthetic population reproducing demographic, social-
80 contact information, workplace sizes and school types (Figure 1A) of a typical medium-sized
81 French town (117,492 inhabitants). Contacts are described as a dynamic multi-layer network
82 ¹⁰ (Figure 1B).

83 We assume that the vaccine reduced susceptibility, quantified by the vaccine effectiveness
84 VE_S , and symptomatic illness after infection, quantified by VE_{SP} ¹⁵ (Figure 1C). We consider
85 a vaccination strategy based on the Cominarty vaccine ¹⁶ which is very suitable for reactive
86 vaccination as it is effective, requires only three weeks between the two doses conferring
87 protection and is available in large quantities. We describe the vaccine-induced protection
88 accounting for the vaccine characteristics against the Delta variant - i.e. the dominant variant
89 at the time of writing. Real-life estimates differ, reflecting the complex interplay among the
90 timing of Delta introduction in the population, the co-circulation of other variants, waning of
91 immunity and differential impact by age. In the baseline analysis we consider vaccine
92 effectiveness levels in the middle of the range of estimates provided in a systematic review ¹⁷.
93 We used a three-week interval between doses as in the vaccine trial. ¹⁶ For vaccine
94 protection, we conservatively assume that there was no protection in the 2 weeks after the
95 first inoculation, followed by intermediate protection until 2 weeks after the second dose (
96 $VE_{S,1}=48\%$ and $VE_{SP,1}=53\%$, see additional details in Table S2 of the Supplementary
97 Information) and maximum protection from this date on ($VE_{S,2}=70\%$ and $VE_{SP,2}=73\%$), 5
98 weeks after the first dose. The maximum protection values are close to the estimates
99 obtained in a meta-analysis for Delta, all vaccines combined ¹⁸. Lower and higher vaccine
100 effectiveness are also explored.



101

102 **Figure 1. A** Distribution of workplace size and of school type for the municipality of Metz (Grand Est region,
 103 France), used in the simulation study. **B** Schematic representation of the population structure, the reactive
 104 vaccination and contact tracing. The synthetic population is represented as a dynamic multi-layer network, where
 105 layers encode contacts in household, workplace, school, community and transport. In the figure, school and
 106 workplace layers are collapsed and community and transport are not displayed for the sake of visualisation. Nodes
 107 repeatedly appear on both the household and the workplace/school layer. The identification of an infectious
 108 individual (in purple in the figure) triggers the detection and isolation of his/her contacts (nodes with orange border)
 109 and the vaccination of individuals attending the same workplace/school and belonging to the same household who
 110 accept to be vaccinated (green). **C** Compartmental model of COVID-19 transmission and vaccination. Description
 111 of the compartments is reported on the Methods section. **D** Timeline of events following infection for a case that is
 112 detected in a scenario with reactive vaccination. For panels C, D transition rate parameters and their values are
 113 described in the Methods and in the Supplementary Information.

114 To parametrise the epidemiological context we assume 32%^{19,20} of the population was fully
 115 immune to the virus due to previous infection and the reproductive ratio is $R=1.6$, in the
 116 range of values estimated for the Delta wave of summer 2021^{1,21}. We model the baseline TTI
 117 policy after the French situation, allowing 3.6 days on average from symptoms onset to
 118 detection and 2.8 average contacts detected and isolated per index case²² (Figure 1 D). We
 119 assume that 50% of clinical cases and 10% of subclinical cases are detected, leading to an

120 overall detection rate of ~25%^{20,23}. Scenarios with enhanced TTI are described later in the
121 text.

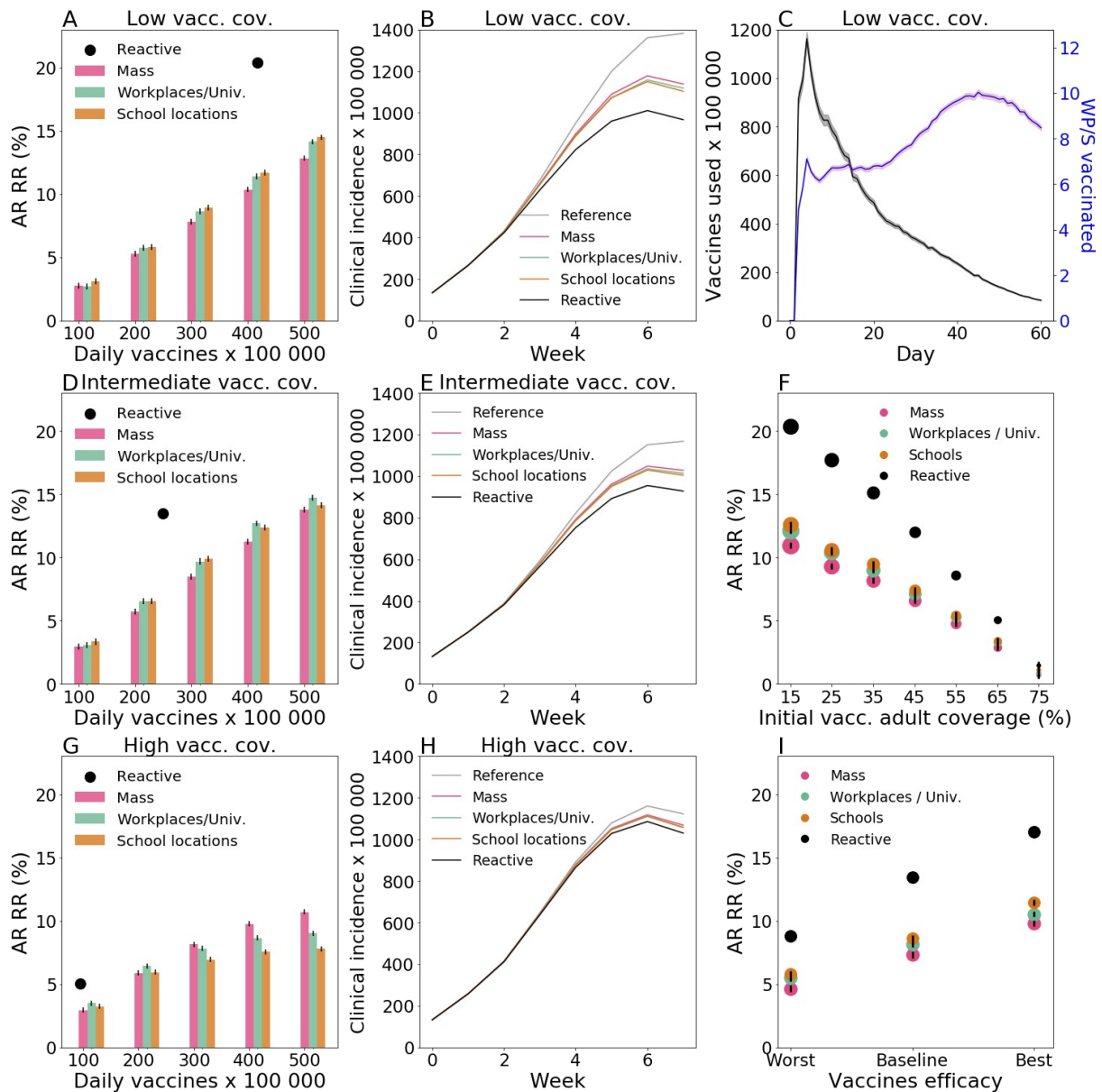
122 We then model vaccination targeting all adults older than 12 years old with baseline vaccine
123 uptake - set to 80% in the 12-65 years old and 90% in the over 65 years old.²⁴ We assumed
124 that priority risk groups (e.g. elderlies) had already been vaccinated up to that level at the
125 start²⁵⁻²⁸. We model three *non-reactive* vaccination strategies in the general population,
126 where vaccination is deployed i) randomly throughout the mass vaccination program (*mass*)
127 or ii) in schools sites (*school location*, described below) or iii) in workplaces/universities
128 (*workplaces/universities*) chosen at random, up to the maximum number of doses available
129 daily. In the *school location* vaccination, we assume vaccine sites are created in relation with
130 schools to vaccinate pupils and their household members who are above 12 years old. Then,
131 we model a *reactive vaccination* strategy, where the detection of a case thanks to TTI triggers
132 the vaccination of household members and those in the same workplace or school (Figure
133 1D). In this scenario, a delay of 2 days on average is assumed between the detection of the
134 case and starting vaccination to account for logistical issues - i.e. ~5.6 days on average from
135 the index case's symptoms onset. In the context of reactive vaccination, we test scenarios
136 with vaccine uptake set to its baseline values, and as high as 100%. The impact of each
137 strategy is evaluated based on the comparison with a reference scenario, where no
138 vaccination campaign is conducted during the course of the simulation and vaccination
139 coverage remains at its initial level.

140 In Figure 2 A, B, C we compare all strategies, assuming that vaccine uptake is the same in
141 reactive and non-reactive vaccination as reference, and initial vaccination coverage is *low*, i.e.
142 ~30% over the population - with 15% of the [12,60] group and 90% of the 60+ group already
143 vaccinated at the beginning. Similar low coverage values were registered in some countries in
144 Eastern Europe and US counties during the Fall 2021^{1,29}. For non-reactive strategies, the
145 vaccination pace is varied between 100 and 500 first doses per 100,000 inhabitants per day.
146 Vaccination pace in Western countries roughly fell within these extremes for the majority of
147 the vaccination campaign, with lower values in general reached around the beginning and the
148 end, due to delivery issues at the beginning, and difficulty in overcoming barriers to
149 vaccination at the end¹. For the reactive strategy, vaccine deployment is triggered by
150 detected cases, therefore the number of doses used and the number of places where these
151 doses are administered depends on the epidemic situation. We assume moderate/high initial
152 incidence, i.e. ~160 clinical cases weekly per 100,000 inhabitants. Panel A shows the relative
153 reduction in the attack rate after two months as a function of the number of first daily doses
154 and Panel B compares the incidence profiles under different strategies with the same number
155 of vaccine doses. The mass, school location and workplaces/universities strategies have a
156 similar impact on the epidemic. They lead to a reduction between 2.7% and 3% of the attack

157 rate with 100 first doses per 100,000 inhabitants administered each day, and between 13%
158 and 15% with 500 per 100,000 inhabitants. The reactive vaccination produces a stronger
159 reduction in cases than the three other strategies in the 2-months period (black dots in Figure
160 2 A and black line in Figure 2 B). We find that 417 doses per 100,000 inhabitants each day on
161 average are used under the epidemic scenario considered here, yielding an attack-rate
162 relative reduction of 20%.

163 In panel C we consider the same parametrization as in Figure A, B and we show the number
164 of first doses in time and the number of places to vaccinate - as a proxy to the incurred
165 logistics of vaccine deployment. The number of daily inoculated doses is initially high, with
166 almost 1200 doses per 100,000 inhabitants used in a day at the peak of vaccine demand, but
167 declines rapidly afterwards down to 6 doses. The number of workplaces to vaccinate follows a
168 different trend. It slowly increases to reach a peak and then declines. The breakdown in
169 Figure S3 of the Supplementary Information shows that schools and large workplaces are
170 vaccinated at the very beginning. Thus a great number of vaccines are initially deployed in
171 large settings, requiring many doses, while as the epidemic spreads it reaches a large
172 number of small settings where only a few individuals can be vaccinated.

173



174

175 Figure 2. **A, D, G** Relative reduction (RR) in the attack rate (AR) over the first two months for all strategies as a
 176 function of the vaccination pace. RR is computed as $(AR_{ref} - AR)/AR_{ref}$ where AR_{ref} is the AR of the reference
 177 scenario, where no vaccination campaign is conducted during the course of the simulation and vaccination
 178 coverage remains at its initial level. AR is computed from clinical cases. Three initial vaccination coverage are
 179 investigated for adults: 15%, i.e. *low vacc. cov.* (A); 40%, i.e. *intermediate vacc. cov.* (D) and 65%, i.e. *high vacc.*
 180 *cov.* (G). **B, E, H** Incidence of clinical cases with different vaccination strategies. The non-reactive scenarios
 181 plotted are obtained with the same daily vaccination pace than for reactive vaccination. Low, intermediate and high
 182 vaccination coverages are investigated for adults in panels B, E, H, respectively. **C** Number of daily first-dose
 183 vaccinations, and number of workplaces/schools (WP/S in the plot) where vaccines are deployed for the same
 184 reactive scenario as in A, B - *low vacc. cov.*, with 15% initial vaccine coverage. For the other vaccination
 185 coverages the curves are qualitatively similar (results not shown). **F** AR RR for different initial vaccination coverage
 186 of adults. The four strategies are compared at equal numbers of vaccine doses. The size of the points is
 187 proportional to the average daily vaccination pace. **I** : AR RR for different Vaccine effectiveness levels (VE). The
 188 baseline VE values used in the other panels is compared with a worst and a best scenario. The worst scenario is
 189 defined by $VE_{S,1}=30\%$, $VE_{SP,1}=35\%$, $VE_{S,2}=53\%$ and $VE_{SP,2}=60\%$, while the best scenario is
 190 defined by $VE_{S,1}=65\%$, $VE_{SP,1}=75\%$, $VE_{S,2}=80\%$ and $VE_{SP,2}=95\%$. For each VE level the four

191 strategies are compared at equal number of vaccine doses. In panel I we consider the *intermediate* vaccination
192 coverage - i.e. 40% initial coverage among adults. In all panels we assumed the following parameters: $R=1.6$;
193 Initial immunity 32%; vaccinated at the beginning 90% for 60+; 10% of individuals are doing teleworking and 5% of
194 community contacts are removed. Values are means over 2000 stochastic simulations. Error bars in panels A, D,
195 G, F, I are derived from the standard errors of the AR. These are smaller than the size of the dots in almost all
196 cases. Shaded areas in panels B, C, E, H indicate the standard errors - very low in panels B, E, H.

197 In panels D, E we consider an *intermediate* vaccination coverage at the beginning (40% of the
198 [12,60] group and 90% of 60+, corresponding to ~45% of the whole population). Non-reactive
199 strategies lead to a relative reduction in the attack rate after two months close to the low initial
200 coverage case. Instead, the impact of reactive vaccination is reduced. A smaller proportion of
201 people attending workplaces/schools that are targeted by vaccination are left to vaccinate,
202 therefore less vaccines are deployed with reduced impact on the epidemic at the population
203 level (Figure 2 D). Still, with ~250 doses per 100,000 inhabitants each day used on average,
204 reactive vaccination produced a 13% reduction in the attack rate. This value is close to the
205 reduction level reached with non-reactive strategies with 400 doses per 100,000 inhabitants
206 each day. The impact of reactive vaccination becomes very small when initial vaccination
207 coverage is *high*. Panels G, H show a scenario where 65% of the [12,60] group and 90% of
208 60+ is vaccinated at the beginning, corresponding to ~60% of the whole population close to
209 the coverage reached in Europe in the Fall 2021 ¹. Only 94 daily vaccines per 100000
210 inhabitants are deployed each day with a 5% reduction in the attack rate compared to the 2%
211 reduction of non-reactive strategies at equal number of doses. Non-reactive strategies with
212 vaccination pace higher or equal to 300 doses per 100,000 inhabitants each day produce a
213 higher reduction in cases (~8% or higher).

214 The effect of the initial vaccination coverage on the impact of the different strategies is
215 summarized in Figure 2 F. The relative reduction declines roughly linearly with the initial
216 vaccination coverage. The reactive vaccination always outperforms non-reactive strategies at
217 equal number of doses. Still, the number of vaccinated people in the reactive vaccination
218 progressively decreases as initial vaccination coverage increases, to reach the point in which
219 the strategy is less effective compared to non-reactive strategies with not-small vaccination
220 pace. Eventually, in panel I we explore different levels of vaccine effectiveness encompassing
221 the whole range of estimates provided by real life estimates ¹⁷. We find that lower vaccine
222 effectiveness values lead to a reduced effect of vaccination as expected. The difference
223 between reactive and non-reactive strategies is also reduced.

224 In the Supplementary Information we analyse the comparison between reactive and non-
225 reactive strategies with varying key parameters. In Figure S4 we assumed the baseline
226 scenario of Figure 2 D, E, i.e. intermediate vaccination coverage at the beginning - ~45% of
227 the whole population vaccinated. We explore alternative values of transmission, incubation
228 period, immunity level of the population, reduction in contacts due to social distancing, time

229 needed for the vaccine to become effective, compliance to vaccination and vaccine effect on
230 the infection duration. Increase in the reproductive ratio, initial immunity and time between
231 doses reduce the impact of the reactive vaccination. An increase in compliance to
232 vaccination, instead, enhanced the impact of both reactive and non-reactive vaccination.
233 Other parameters had a more limited role on strategies' effectiveness. We then consider a
234 scenario of a flare-up of cases, as it may be caused by a new variant of concern (VOC)
235 spreading in the territory (Figure S5). The deployment of vaccines is in this case limited and
236 slow. Depending on the values of the other parameters, i.e. proportion of teleworking and time
237 from building immunity following vaccination, the reactive strategy may bring limited or no
238 benefit with respect to non-reactive strategies, when the comparison is done at equal number
239 of doses. Eventually, we test the robustness of our results according to the selected health
240 outcome, using hospitalisations, ICU admissions, ICU bed occupancy, deaths, life-years lost
241 and quality-adjusted life-years lost, finding the same qualitative behavior.

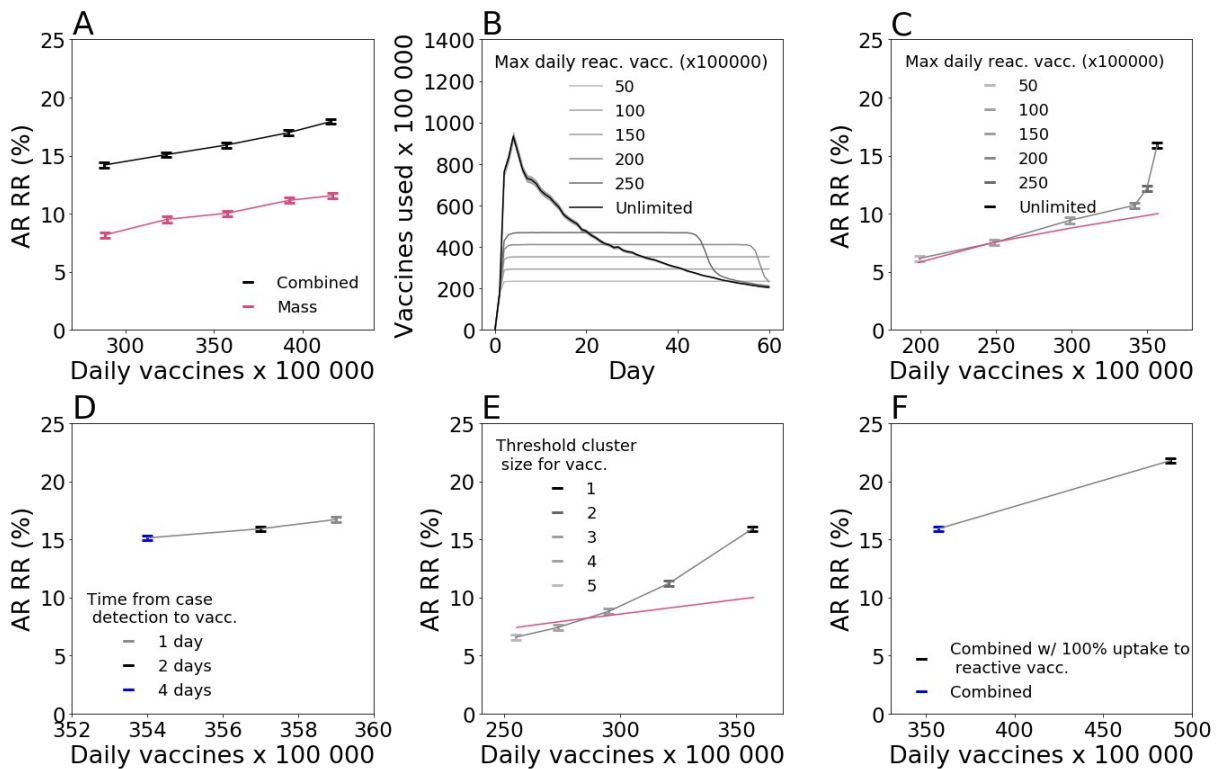
242 **Combined reactive and mass vaccination for managing sustained COVID-19** 243 **spread**

244 With high availability of vaccine doses, reactive vaccination could be deployed on top of mass
245 vaccination. We consider the *intermediate* vaccination coverage scenario (i.e. ~45% of the
246 whole population vaccinated) defined in the previous section and compare mass and reactive
247 vaccination simultaneously (*combined strategy*) with mass vaccination alone. We focus on the
248 first two months since the implementation of the vaccination strategy. At an equal number of doses
249 within the period, the combined strategy outperforms mass vaccination in reducing the attack
250 rate. For instance, the relative reduction in the attack rate would go from 10%, when ~360
251 daily doses per 100,000 inhabitants are deployed for mass vaccination, to 16%, when the
252 same number of doses are used for reactive and mass vaccination combined (Figure 3A).

253 We explore alternative scenarios where the number of vaccines used and places vaccinated
254 are limited due to availability and logistic constraints. We assess the effect of three
255 parameters: (i) the maximum daily number of vaccines that can be allocated towards reactive
256 vaccination (with caps going from 50 to 250 per 100,000 inhabitants, compared with unlimited
257 vaccine availability assumed in the baseline scenario), (ii) the time from the detection of a
258 case and the vaccine deployment (set to 2 days in the baseline scenario, and here explored
259 between 1 and 4 days), and (iii) the number of detected cases that triggers vaccination in a
260 place (from 2 to 5 cases, vs. the baseline value of 1). The number of first-dose vaccinations in
261 time under the different caps is plotted in Figure 3 B. A small cap on the number of doses
262 limits the impact of the reactive strategy. Figure 3 C shows that the attack rate relative
263 reduction drops from 16% to 6% if only a maximum of 50 first doses per 100,000 inhabitants
264 daily can be used in reactive vaccination, reaching the levels of mass vaccination only.

265 Doubling the time required to start reactive vaccination, from 2 days to 4 days, has a limited
 266 effect on the reduction of the AR (relative reduction reduced from 16% to 15%, Figure 3D).
 267 Increasing the number of detected cases used to trigger vaccination to 2 (respectively 5)
 268 reduces the relative reduction to 11% (respectively 6%) (Figure 3E).

269 We so far assumed that vaccine uptake is the same in mass and reactive vaccination. This
 270 assumption is likely conservative, in that individuals may be more inclined to accept
 271 vaccination when this is proposed in the context of reactive vaccination due to the higher
 272 perceived benefit of vaccination. In Figure 3F we consider a scenario where vaccine uptake
 273 with reactive vaccination climbs to 100%. Attack rate relative reduction increases in this case
 274 from 16% to 22%, with a demand of ~480 daily doses per 100,000 inhabitants on average.



275
 276

277 Figure 3. **A** Relative reduction (RR) in the attack rate (AR) over the first two months for the combined strategy
 278 (mass / reactive) and the mass strategy with the same number of first-dose vaccinations as in the combined
 279 strategy during the period. RR is computed with respect to the reference scenario with initial vaccination only, as in
 280 Figure 2. Combined strategy is obtained by running in parallel the mass strategy - from 50 to 250 daily vaccination
 281 rate per 100,000 inhabitants - and the reactive strategy. Number of doses displayed in the x-axis of the figure is
 282 the total number of doses used by the combined strategy daily. Corresponding incidence curves are reported in
 283 Figure S7 of the Supplementary Information. **B** Number of first-dose vaccinations deployed each day for the
 284 combined strategy with different daily vaccines' capacity limits. **C, D, E** AR RR for the combined strategy as a
 285 function of the average daily number of first-dose vaccinations in the two-month period. Symbols of different
 286 colours indicate: (**C**) different values of daily vaccines' capacity limit; (**D**) different time from case detection to
 287 vaccine deployment; (**E**) different threshold size for the cluster to trigger vaccination. In panel C and E the curve
 288 corresponding to mass vaccination only is also plotted for comparison. **F** Comparison between 100% and baseline
 289 vaccination uptake in case of reactive vaccination. In all cases we assumed the following parameters: $R=1.6$; Initial

290 immunity 32%; vaccinated at the beginning 90% and 40% for 60+ and <60, respectively; 10% of individuals are
291 doing teleworking and 5% of community contacts are removed. Values are means over 2000 stochastic
292 simulations, error bars are derived from the standard errors of the AR. In panel B only the standard error of the
293 unlimited case is shown, this indicated by the shaded area.

294 **Combined reactive and mass vaccination for managing a COVID-19 flare-up**

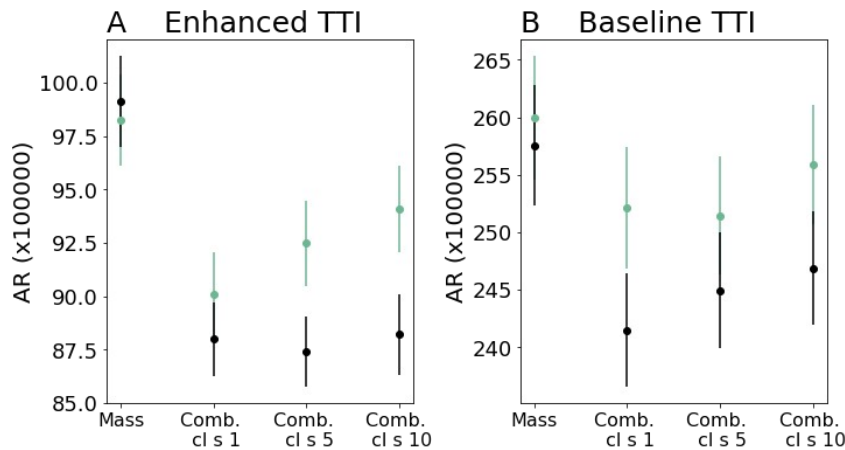
295 We have previously said that in a scenario of flare-up of cases reactive vaccination would
296 bring limited benefit compared to other strategies (Figure S5 of the Supplementary
297 Information). Here we analyse this scenario more in depth, assuming that reactive vaccination
298 is combined with mass vaccination, but triggers an increase in vaccine uptake and is
299 associated with enhanced TTI, as may be the case in a realistic scenario of alert due to initial
300 VOC detection.

301 We assume mass vaccination with 150 first doses per day per 100,000 inhabitants is
302 underway from the start, with *intermediate* vaccination coverage at the beginning (i.e. ~45%
303 of the whole population vaccinated). We assume baseline TTI is in place prior to cases'
304 introduction. To start a simulation, three infectious individuals carrying a VOC are introduced
305 in the population where the virus variant is not currently circulating. Upon detection of the first
306 case, we assume that TTI is enhanced, finding 70% of clinical cases, 30% of subclinical
307 cases (i.e. ~45% of all cases) and three times more contacts outside the household with
308 100% compliance to isolation (Table S4 of the Supplementary Information) - the scenario
309 without TTI enhancement is also explored for comparison. As soon as the number of detected
310 cases reaches a predefined threshold, reactive vaccination is started on top of the mass
311 vaccination campaign. We assume vaccine uptake increases to 100% for reactive
312 vaccination but stays at its baseline value for other approaches.

313 In Figure 4 we compare the combined scenario with mass vaccination alone at an equal
314 number of doses, and we investigate starting the reactive vaccination after 1, 5 or 10 detected
315 cases. Panels A, B show the case of baseline transmissibility and vaccine effectiveness. With
316 reactive vaccination starting from the first detected case, the attack rate decreases by ~10%,
317 compared with the mass scenario. However, the added value of reactive vaccination
318 decreases if more detected cases are required to start the intervention. Without enhancement
319 in TTI and increase in vaccine uptake, attack rate values are much higher and the benefit of
320 reactive vaccination over the mass vaccination is lower (~3%).

321 In the Supplementary Information we consider different epidemic scenarios, testing different
322 values for the transmissibility and vaccine effectiveness - including worst-case vaccine
323 effectiveness, and R as high as 1.8 -, finding similar trends. Eventually, we analysed the
324 impact of vaccination on the flare-up extinction. With the parameterization of Figure 4 A we
325 find probabilities of extinction equal to ~5.5% and ~6% with mass and combined strategies,

326 respectively. These values respectively become ~15% and ~18% in a best-case scenario with
327 a more rapid mounting of vaccine effect after the first dose, best-case vaccine effectiveness
328 and strong TTI.



329

330 Figure 4 **A, B** Average attack rate per 100000 inhabitants in the first two months for the enhanced (A) and baseline
331 (B) TTI scenario. Four vaccination strategies are compared: mass only, combined where the reactive vaccination
332 starts at the detection of 1, 5, 10 cases (Comb. cl. s.= 1, 5, 10 in the figure). For mass vaccination the number of
333 first-dose vaccinations during the period is the same as in the comb. cl. s=1 of the same scenario. In all panels we
334 assume the following parameters: $R=1.6$; Initial immunity 32%; 90% for 60+ year old and 40% for <60 years old
335 already vaccinated at the beginning; 10% of individuals are doing teleworking and 5% of community contacts are
336 removed. Corresponding incidence curves are reported in Figure S8 of the Supplementary Information. Error bars
337 are the standard errors from 8000 stochastic realisations.

338 Discussion

339 The rapid rise of new SARS-CoV-2 variants with increased transmissibility has made the
340 course of the COVID-19 pandemic unpredictable, posing a persistent public health threat that
341 jeopardises relaxation of NPIs and return to normal life^{25,30-34}. More transmissible viruses call
342 for vaccination of a larger proportion of the population, therefore vaccination must be made
343 more accessible and able to adapt to a rapidly evolving epidemic situation². In this context,
344 we have analysed the reactive vaccination of workplaces, universities and schools to assess
345 its potential role in managing the epidemic.

346 We presented an agent-based model that accounts for the key factors affecting the
347 effectiveness of reactive vaccination: disease natural history, vaccine characteristic, individual
348 contact behaviour, and logistic constraints. For a wide range of epidemic scenarios, the
349 reactive vaccination had a stronger impact on the COVID-19 epidemic compared to non-
350 reactive vaccination strategies (including the standard mass vaccination) at equal number of
351 doses used within the two months after inception. In addition, combining reactive and mass
352 vaccination was more effective than mass vaccination alone. For instance, in a scenario of
353 moderate/high incidence with ~45% vaccination coverage at the beginning we found that the

354 relative reduction in the attack rate after two months would improve from 10% to 16% with
355 ~350 daily first vaccine doses per 100000 habitants used in a combined mass/reactive
356 vaccination approach instead of mass only. However, reactive vaccination had limited or no
357 advantage with respect to non-reactive strategies under certain circumstances, as the number
358 of doses administered with the reactive vaccination depended on the number and pace of
359 occurrence and detection of COVID-19 cases. This may be the case when vaccination
360 coverage is already high at the beginning and only a few people to vaccinate are found
361 around detected cases, or in a flare-up scenario when only a few cases are detected. Non-
362 reactive strategies could then be more effective as long as the pace of vaccine administration
363 is not small. Yet, in these situations, adding reactive vaccination to mass vaccination could
364 become of interest again by triggering an increase in vaccine uptake, all the more if this is
365 combined with enhanced TTI.

366 Reactive vaccination has been studied for smallpox, cholera and measles, among others ⁵⁻
367 ^{7,35,36}. Hotspot vaccination was found to help in cholera outbreak response by both modelling
368 studies and outbreak investigation ^{36,37}. It may target geographic areas defined at spatial
369 resolution as diverse as districts within a country, or neighbourhoods within a city, according
370 to the situation. For Ebola and smallpox ring vaccination was successfully adopted to
371 accelerate epidemic containment ⁵⁻⁷. For these infections, vaccine-induced immunity mounts
372 rapidly compared to the incubation period and contacts of an index case can be found before
373 they start transmitting since pre-symptomatic and asymptomatic transmission is almost
374 absent. Ring vaccination is also likely effective when the vaccine has post-exposure effects⁸.
375 Reactive vaccination of schools and university campuses has been implemented in the past
376 to contain outbreaks of meningitis ³⁸ and measles ^{39,40}.

377 For COVID-19, the use of reactive vaccination has been reported in Ontario, the UK,
378 Germany, France, among others ^{2,41-46}. In these places, vaccines were directed to
379 communities, neighbourhoods or building complexes with a large number of infections or
380 presenting epidemic clusters or surge of cases due to virus variants. The goal of these
381 campaigns was to minimise the spread of the virus, but it also addressed inequalities in
382 access and increased fairness, since a surge of cases may happen where people have
383 difficulty in isolating due to poverty and house crowding ⁴⁷. In France, reactive vaccination
384 was implemented to contain the emergence of variants of concerns in the municipalities of
385 Bordeaux, Strasbourg and Brest ⁴⁴⁻⁴⁶. In the municipality of Strasbourg, vaccination slots
386 dedicated to students were created following the identification of a Delta cluster in an art
387 school ⁴⁴. Despite the interest in the strategy and its inclusion in the COVID-19 response
388 plans, very limited work has been done so far to quantify its effectiveness ^{48,49}. A modelling
389 study on ring-vaccination suggested that the strategy could be valuable if the vaccine has
390 post-exposure efficacy and a large proportion of contacts could be identified ⁴⁹. Still, post-

391 exposure effects of the vaccine remain currently under-investigated,⁵⁰ and it is likely that the
392 vaccination of the first ring of contacts alone would bring little benefit, if at all. We have here
393 tested reactive vaccination of workplaces and schools, since focusing on these settings may
394 be an efficient way to easily reach an extended group of contacts. Workplaces have been
395 found to be an important setting for COVID-19 transmission, especially specific workplaces
396 where conditions are more favourable for spreading^{51,52}. University settings also cover a
397 central role in the COVID-19 transmission, due to the higher number of contacts among
398 students, particularly if sharing common spaces in residence accommodations⁵³. Model
399 results show that reactive vaccination of these settings could have in many circumstances a
400 stronger impact than simply reinforcing vaccination as in hotspot strategies.

401 However, the effectiveness of the reactive strategy depends on the epidemic context. We
402 found that, as vaccination coverage increases, the relative advantage of reactive vaccination
403 over non-reactive strategie diminishes. For >40% vaccination coverage among adults, the
404 relative reduction of the strategy is smaller than the one produced by non-reactive vaccination
405 at a moderate/high vaccination pace, under the hypothesis of no increase in vaccine uptake in
406 the context of reactive vaccination. As discussed before, when a cluster is identified in a given
407 workplace/school the vaccine is proposed only to a few individuals not previously vaccinated
408 and compliant to vaccination, resulting in a limited deployment of vaccine and a reduced
409 impact. In addition, breakthrough infection becomes an important driver of propagation when
410 a large proportion of individuals are vaccinated, with consequently a larger proportion of
411 subclinical cases and in turn a reduced detection rate overall. This makes the detection of
412 outbreaks and consequently the reactive deployment of vaccines more difficult.

413 If initial vaccination coverage is not too high, the feasibility and advantage of the inclusion of
414 reactive vaccination imply a trade-off between epidemic intensity and logistic constraints. At a
415 moderate/high incidence level, combining reactive and mass vaccination would substantially
416 decrease the attack rate compared to mass vaccination for the same number of doses, but
417 the large initial demand in vaccines may exceed the available stockpiles. Even with large
418 enough stockpiles, issues like the timely deployment of additional personnel in mobile vaccine
419 units and the need to quickly inform the population by communication campaigns must be
420 solved to guarantee the success of the campaign. We explored with the model the key
421 variables that would impact the strategy effectiveness. Delaying the deployment of vaccines
422 in workplaces/schools upon the detection of a case (from 2 to 4 days on average) would not
423 have a strong impact on its effectiveness. However, vaccines should be deployed at the
424 detection of the first case to avoid substantially limiting the impact of the strategy - e.g. the
425 relative reduction goes from 16% to 6% when workplaces/schools are vaccinated at the
426 detection of 5 cases (Figure 3E).

427 In the case of a COVID-19 flare-up the reactive strategy may bring an advantage if the

428 reactive strategy starts early, it is combined with increased TTI and it triggers an increase in
429 vaccine uptake. First, an early start of the reactive vaccination campaign since the detection
430 of the first VOC case requires that tests for the detection of variants must be carried out
431 quickly and with large coverage. Genomic surveillance has ramped up in many countries
432 since the emergence of the Alpha variant in late 2020. In France, nationwide surveys are
433 conducted every two weeks involving the full genome sequencing of randomly selected
434 positive samples⁵⁴. Approximately 50% of positive tests are also routinely screened for key
435 mutations to monitor the circulation of the main variants registered as VOC or VUI⁵⁴. While
436 these volumes of screening may be regarded as sufficient to quickly identify the presence of
437 variants, the quick rising of large clusters of cases is possible, notably due to super spreading
438 events, becoming increasingly frequent as social restrictions relax. Second, reactive
439 vaccination must be part of a wider response plan, including notably a strong intensification of
440 TTI²³. Rapid and efficient TTI efficiently mitigates spread on its own, but it is also instrumental
441 to the success of reactive vaccination as it allows triggering vaccination in households,
442 workplaces and schools. Third, an increased level of vaccine uptake is essential for reactive
443 vaccination to be of interest. In many Western countries, upward trends in vaccine uptake
444 have been observed as the vaccination campaign unfolds, thanks to government mandates,
445 incentives by public health authorities, the communication effort and the strong evidence
446 regarding vaccine efficacy. Still vaccination coverage is highly heterogeneous and remains
447 low, e.g., in many countries of Eastern Europe and in many counties in the US^{1,29}. Besides
448 the individuals who oppose vaccination, a reactive strategy may have the potential to increase
449 acceptability of the vaccine by making it more accessible and anticipating an immediate
450 benefit against the risk of infection. An increase in vaccine uptake was indeed observed in the
451 context of a reactive vaccination campaign during the course of a measles outbreak⁴.
452 Therefore reactive vaccination could be an important way to improve access to vaccination -
453 especially for the hard-to-reach population - and potentially increase acceptability, e.g. due to
454 risk perception.

455 The study is affected by several limitations. First, the synthetic population used in the study
456 accounts for the repartition of contacts across workplaces, schools, households, etc.,
457 informed by contact surveys. However, numbers of contacts and risk of transmission could
458 vary greatly according to the kind of occupation. The synthetic population accounts for this
459 variability assuming that the average number of contacts from one workplace to another is
460 gamma distributed¹⁰. Still, no data were available to inform the model in this respect. Second,
461 we model vaccination uptake according to age only, when it is determined by several
462 sociodemographic factors. Clusters of vaccine hesitant individuals may play an important role
463 in the dynamics and facilitate the epidemic persistence in the population, as it is described for
464 measles⁵⁵. In those countries where vaccination coverage is high, heterogeneities in attitude
465 toward vaccination may have an impact. Third, the agent-based model is calibrated from

466 French socio-demographic data. The results of this study can be extended to countries with
467 similar societal structure and contact patterns, as e.g. other developed countries⁵⁶. Still,
468 COVID-19 transmission potential, level of disease-induced immunity, vaccination coverage,
469 and extent of social restrictions vary substantially from one country to another. In addition, the
470 time since vaccination campaign was started, the consequent extent of waning of immunity
471 and countries' strategies of administering the vaccine booster affect the level of protection of
472 the population already vaccinated and may alter the impact of reactive deployment of
473 vaccines among individuals not yet vaccinated. We explored a large set of parameters in the
474 Supplementary Information to provide fundamental understanding on the interplay between
475 the epidemic and the reactive vaccination dynamics that may aid the planning of the strategy
476 in case of future epidemic surges.

477 **Methods**

478 **Synthetic population**

479 We use a synthetic population for a French municipality based on the National Institute of
480 Statistics and Economic Studies (INSEE) censuses and French contact survey information
481^{10,57}. This includes the following input files: i) a setting-specific, time-varying network of daily
482 face-to-face contacts; ii) the maps between individuals and their age, iii) between individuals
483 and the household they belong to, iv) between individuals and their school, v) and between
484 individuals and their workplace. The synthetic population has age pyramid, household
485 composition, number of workplaces by size, and number of schools by type, reproducing
486 INSEE statistics. Daily face-to-face contacts among individuals are labelled according to the
487 setting in which they occur (either household, workplace, school, community or transport) and
488 they have assigned a daily frequency of activation, to explicitly model recurrent and sporadic
489 contacts. We consider the municipality of Metz in the Grand Est region, which has 117,492
490 inhabitants, 131 schools (from kindergarten to University) and 2888 workplaces (Figure 1A).
491 Detailed description of how the population was generated is provided in¹⁰. Information about
492 how to access population files is provided in the Data availability section.

493 **Overview of the model**

494 The model is written in C/C++, and is stochastic and discrete-time. It accounts for the
495 following components: (i) teleworking and social distancing, (ii) COVID-19 transmission,
496 accounting for the effect of the vaccine; (iii) test-trace-isolate; (iv) vaccine deployment. Model
497 output includes time series of incidence (clinical and subclinical cases), detailed information
498 on infected cases (time of infection, age, vaccination status), vaccines administered according
499 to the strategy, number of workplaces where vaccines are deployed. Different epidemic
500 scenarios are explored and compared. In the Supplementary Information we also analyse

501 hospitalisation entries, deaths, ICU entries, life-year lost, quality-adjusted life-year, ICU bed
502 occupancy. These quantities are computed by postprocessing output files containing the
503 detailed information on infected cases.

504 **Teleworking and social distancing**

505 Teleworking and other social restrictions may alter the repartition of contacts across settings
506 and in turn the effectiveness of vaccination strategies²³. We thus explicitly accounted for this
507 ingredient in the model. Specifically, to model teleworking we assume a proportion of nodes
508 are absent from work, modelled by erasing working contacts and transport contacts of these
509 nodes. To account for the reduction in social encounters due to the closure of restaurants and
510 other leisure activities we removed a proportion of contacts from the community layer. In
511 Western countries, level of restrictions varied greatly both by country and in time since
512 vaccines were first deployed at the beginning of 2021. We set the contact reduction in the
513 community to 5% and the teleworking to 10%. These are close to the reduction values
514 reported by google mobility reports for France during Autumn 2021⁵⁸, and fall within the
515 range of European countries' estimates. Note that levels of teleworking ~10% for European
516 countries are reported also by other sources⁵⁹. Scenarios with different levels of contact
517 reduction are compared in the Supplementary Information. Telework and social distancing is
518 implemented at the beginning of the simulation and remains constant for the duration of the
519 simulation. Importantly, the reproductive ratio is set to the desired value, independently by the
520 level of contact reduction, as described in the Supplementary Information.

521 **COVID-19 transmission model**

522 Transmission model is an extension of the model in¹⁰ (see Figure 1D). This accounts for
523 heterogeneous susceptibility and severity across age groups^{60,61}, the presence of an exposed
524 and a pre-symptomatic stage⁹, and two different levels of infection outcome - subclinical,
525 corresponding to asymptomatic infection and paucisymptomatic, and clinical, corresponding
526 to moderate to critical infection^{60,62}. Precisely, susceptible individuals, if in contact with
527 infectious ones, may get infected and enter the exposed compartment (E). After an average
528 latency period ϵ^{-1} they become infectious, developing a subclinical infection (I_{sc}) with age-
529 dependent probability p_{sc}^A and a clinical infection (I_c) otherwise. From E , before entering either
530 I_{sc} or I_c , individuals enter first a prodromal phase (either $I_{p,sc}$ or $I_{p,c}$), that lasts on average
531 μ_p^{-1} days. Compared to $I_{p,c}$ and I_c individuals, individuals in the $I_{p,sc}$ and I_{sc} compartments
532 have reduced transmissibility rescaled by a factor β_I . With rate μ infected individuals become
533 recovered. Age-dependent susceptibility and age-dependant probability of clinical symptoms
534 are parametrised from⁶⁰. In addition, transmission depends on setting as in¹⁰. We assume
535 that the time spent in the E , $I_{p,sc}$ and $I_{p,c}$, is Erlang distributed with shape 2, and rate 2ϵ for

536 E , and $2\mu_p$ for $I_{p,sc}$ and $I_{p,c}$. Time spent in I_{sc} and I_c is exponentially distributed. Parameters
537 are summarised in Table S1 of the Supplementary Information.

538 We model vaccination with a leaky vaccine, partially reducing both the risk of infection (i.e.
539 reduction in susceptibility, VE_S) and infection-confirmed symptomatic illness (VE_{SP})¹⁵. Level
540 of protection increases progressively after the inoculation of the first dose. In our model we
541 did not explicitly account for the two-dose administration, but we accounted for two levels of
542 protection – e.g. a first one approximately in between of the two doses and a second one after
543 the second dose. Vaccine efficacy was zero immediately after inoculation, mounting then to
544 an intermediate level ($VE_{S,1}$ and $VE_{SP,1}$) and a maximum level later ($VE_{S,2}$ and $VE_{SP,2}$).
545 This is represented through the compartmental model in Figure 1C. Upon administering the
546 first dose, S individuals become, $S^{V,0}$, i.e. individuals that are vaccinated, but have no vaccine
547 protection. If they do not become infected, they enter the stage $S^{V,1}$, where they are partially
548 protected, then stage $S^{V,2}$ where vaccine protection is maximum. Time spent in $S^{V,0}$ and $S^{V,1}$
549 is Erlang distributed with shape 2 and rate $2/\tau_0$ and $2/\tau_1$ for $S^{V,0}$ and $S^{V,1}$, respectively. $S^{V,1}$
550 and $S^{V,2}$ individuals have reduced probability of getting infected by a factor $r_{S,1} = (1 - VE_{S,1})$
551 and $r_{S,2} = (1 - VE_{S,2})$, respectively. In case of infection, $S^{V,2}$ individuals progress first to
552 exposed vaccinated (E^V), then to either preclinical or pre-subclinical vaccinated ($I_{p,c}^V$ or $I_{p,sc}^V$)
553 that are followed by clinical and subclinical vaccinated respectively (I_c^V or I_{sc}^V). Probability of
554 becoming $I_{p,c}^V$ from E^V is reduced of a factor $r_{c,2} = (1 - VE_{SP,2})(1 - VE_{S,2})^{-1}$. For the $S^{V,1}$
555 individuals that get infected we assume a polarised vaccine effect, i.e. they can enter either in
556 E^V , with probability p_V , or in E (Figure 1D). The value of p_V can be set based on $VE_{SP,1}$
557 through the relation $(1 - VE_{SP,1}) = (1 - VE_{S,1})(p_V r_{c,2} + (1 - p_V))$. We assume no reduction in
558 infectiousness for vaccinated individuals. However, we accounted for a 25% reduction in the
559 duration of the infectious period as reported in^{63,64}.

560 Under the assumption that no serological/virological/antigenic test is done before vaccine
561 administration, the vaccine is administered to all individuals, except for clinical cases who
562 show clear signs of the disease or individuals that were detected as infected by the TTI in
563 place. In our model a vaccine administered to infected or recovered individuals has no effect.

564 In the baseline scenario we parametrise $VE_{SP,1}$, $VE_{SP,2}$, $VE_{S,1}$ and $VE_{S,2}$ by taking values in
565 the middle of estimates reported in the systematic review by Higdon and collaborators¹⁷ for
566 the Comirnaty vaccine and the Delta variant⁶⁵. Chosen values of $VE_{SP,2}$, and $VE_{S,2}$ are also
567 comparable with the effectiveness estimates reported in a meta-analysis for the Delta variant,
568 complete vaccination, all vaccines combined¹⁸. We also test values on the upper and lower

569 extremes of the range of estimates of ¹⁷. Parameters are listed in Table S2 of the
570 Supplementary Information.

571 **Test-trace-isolate**

572 We model a baseline TTI accounting for case detection, household isolation and manual
573 contact tracing. Fifty percent of individuals with clinical symptoms were assumed to get tested
574 and to isolate if positive. We assume an exponentially distributed delay from symptoms onset
575 to case detection and its isolation with 3.6 days on average. Once a case is detected, his/her
576 household members isolate with probability $p_{ct,HH}$, while other contacts isolate with
577 probabilities $p_{ct,A}$ and $p_{ct,Oth}$, for acquaintances and sporadic contacts, respectively. In addition
578 to the detection of clinical cases, we assume that a proportion of subclinical cases were also
579 identified (10%). Isolated individuals resume normal daily life after 10 days unless they still
580 have clinical symptoms after the time has passed. They may, however, decide to drop out
581 from isolation each day with a probability of 13% if they do not have symptoms ⁶⁶.

582 In the scenario of virus re-introduction we consider enhanced TTI, corresponding to a
583 situation of case investigation, screening campaign and sensibilisation (prompting higher
584 compliance to isolation). We assume a higher detection of clinical and subclinical cases (70%
585 and 30%, respectively), perfect compliance to isolation by the index case and household
586 members and a three-fold increase in contacts identified outside the household.

587 Step-by-step description of contact tracing is provided in the Supplementary Information.
588 Parameters for baseline TTI are provided in Table S3, while parameters for enhanced TTI are
589 provided in Table S4.

590 **Vaccination strategies**

591 A vaccine opinion (willingness or not to vaccinate) is stochastically assigned to each
592 individual at the beginning of the simulation depending on age (below/above 65 years old).
593 Opinion does not change during the simulation. In some scenarios we assume that all
594 individuals are willing to accept the vaccine in case of reactive vaccination, while maintaining
595 the opinion originally assigned to them when the vaccine is proposed in the context of non-
596 reactive vaccination. Only individuals above a threshold age, $a_{th,v}=12$ years old, are
597 vaccinated. We assume that a certain fraction of individuals are vaccinated at the beginning
598 of the simulation according to the age group ([12,60], 60+). We compare the following
599 vaccination strategies:

600 *Mass*: V_{daily} randomly selected individuals are vaccinated each day until a V_{tot} limit is
601 reached.

602 *Workplaces/universities*: Random workplaces/universities are selected each day. All
603 individuals belonging to the place, willing to be vaccinated, and not isolated at home that day
604 are vaccinated. Individuals in workplaces/universities are vaccinated each day until the daily
605 limit, V_{daily} is reached. No more than V_{tot} individuals are vaccinated during the course of the
606 simulation. We assume that only workplaces with $th=20$ employees or larger implement
607 vaccination.

608 *School location*: Random schools, other than universities, are selected each day and a
609 vaccination campaign is conducted in the places open to all household members of school
610 students. All household members willing to be vaccinated, above the threshold age and not
611 isolated at home that day are vaccinated. No more than V_{daily} individuals are vaccinated each
612 day and no more than V_{tot} individuals are vaccinated during the course of the simulation.

613 *Reactive*: When a case is detected, vaccination is done in her/his household with rate r_v^{\square} .
614 When a cluster – i.e. at least n_{cl} cases detected within a time window of length T_{cl} – is
615 detected in a workplace/school, vaccination is done in that place with rate r_v^{\square} . In the baseline
616 scenario, we assume vaccination in workplace/school to be triggered by one single infected
617 individual ($n_{cl}=1$). In both household and workplace/school, all individuals belonging to the
618 place above the threshold age and willing to be vaccinated are vaccinated. Individuals that
619 were already detected and isolated at home are not vaccinated. No more than V_{daily}
620 individuals are vaccinated each day and no more than V_{tot} individuals are vaccinated during
621 the course of the simulation. In the baseline scenario these quantities are unlimited, i.e. all
622 individuals to be vaccinated in the context of reactive vaccination are vaccinated.

623 Parameters and their values are summarised in Table S5 of the Supplementary Information.

624 **Data availability**

625 The synthetic population used in the analysis is available on github ⁶⁷.

626 **Code availability**

627 We provide all C/C++ code files of the model on github ⁶⁷.

628 **References**

- 629 1. Ritchie, H. *et al.* Coronavirus Pandemic (COVID-19). *Our World in Data* (2020).
- 630 2. Overview of the implementation of COVID-19 vaccination strategies and deployment plans
631 in the EU/EEA. *European Centre for Disease Prevention and Control*
632 <https://www.ecdc.europa.eu/en/publications-data/overview-implementation-covid-19->

- 633 vaccination-strategies-and-deployment-plans (2021).
- 634 3. To vaccinate more Americans, lean into outbreaks. *STAT*
- 635 <https://www.statnews.com/2021/08/19/lean-into-outbreaks-to-vaccinate-more-americans/>
- 636 (2021).
- 637 4. Le Menach, A. *et al.* Increased measles–mumps–rubella (MMR) vaccine uptake in the
- 638 context of a targeted immunisation campaign during a measles outbreak in a vaccine-
- 639 reluctant community in England. *Vaccine* **32**, 1147–1152 (2014).
- 640 5. Merler, S. *et al.* Containing Ebola at the Source with Ring Vaccination. *PLOS Neglected*
- 641 *Tropical Diseases* **10**, e0005093 (2016).
- 642 6. Henao-Restrepo, A. M. *et al.* Efficacy and effectiveness of an rVSV-vectored vaccine
- 643 expressing Ebola surface glycoprotein: interim results from the Guinea ring vaccination
- 644 cluster-randomised trial. *Lancet* (2015) doi:10.1016/S0140-6736(15)61117-5.
- 645 7. Geddes, A. M. The history of smallpox. *Clinics in Dermatology* **24**, 152–157 (2006).
- 646 8. Gallagher, T. & Lipsitch, M. Postexposure Effects of Vaccines on Infectious Diseases.
- 647 *Epidemiologic Reviews* **41**, 13–27 (2019).
- 648 9. He, X. *et al.* Temporal dynamics in viral shedding and transmissibility of COVID-19. *Nature*
- 649 *Medicine* 1–4 (2020) doi:10.1038/s41591-020-0869-5.
- 650 10. López, J. A. M. *et al.* Anatomy of digital contact tracing: Role of age, transmission
- 651 setting, adoption and case detection. *Science Advances* eabd8750 (2021)
- 652 doi:10.1126/sciadv.abd8750.
- 653 11. Ajelli, M. *et al.* Comparing large-scale computational approaches to epidemic
- 654 modeling: Agent-based versus structured metapopulation models. *BMC Infectious*
- 655 *Diseases* **10**, 190 (2010).
- 656 12. Chao, D. L., Halloran, M. E., Obenchain, V. J. & Jr, I. M. L. FluTE, a Publicly Available
- 657 Stochastic Influenza Epidemic Simulation Model. *PLOS Comput Biol* **6**, e1000656 (2010).
- 658 13. Willem, L., Verelst, F., Bilcke, J., Hens, N. & Beutels, P. Lessons from a decade of
- 659 individual-based models for infectious disease transmission: a systematic review (2006-
- 660 2015). *BMC Infectious Diseases* **17**, 612 (2017).
- 661 14. Liu, Q.-H. *et al.* Measurability of the epidemic reproduction number in data-driven

- 662 contact networks. *PNAS* **115**, 12680–12685 (2018).
- 663 15. Basta, N. E., Halloran, M. E., Matrajt, L. & Longini, I. M. Estimating influenza vaccine
664 efficacy from challenge and community-based study data. *Am J Epidemiol* **168**, 1343–
665 1352 (2008).
- 666 16. Polack, F. P. *et al.* Safety and Efficacy of the BNT162b2 mRNA Covid-19 Vaccine.
667 *New England Journal of Medicine* **383**, 2603–2615 (2020).
- 668 17. Higdon, M. M. *et al.* A systematic review of COVID-19 vaccine efficacy and
669 effectiveness against SARS-CoV-2 infection and disease. 2021.09.17.21263549
670 <https://www.medrxiv.org/content/10.1101/2021.09.17.21263549v1> (2021)
671 doi:10.1101/2021.09.17.21263549.
- 672 18. Harder, T. *et al.* Effectiveness of COVID-19 vaccines against SARS-CoV-2 infection
673 with the Delta (B.1.617.2) variant: second interim results of a living systematic review and
674 meta-analysis, 1 January to 25 August 2021. *Eurosurveillance* **26**, 2100920 (2021).
- 675 19. Proportion de la population infectée par SARS-CoV-2. [https://modelisation-](https://modelisation-covid19.pasteur.fr/realtime-analysis/infected-population/)
676 [covid19.pasteur.fr/realtime-analysis/infected-population/](https://modelisation-covid19.pasteur.fr/realtime-analysis/infected-population/).
- 677 20. Hozé, N. *et al.* Monitoring the proportion of the population infected by SARS-CoV-2
678 using age-stratified hospitalisation and serological data: a modelling study. *The Lancet*
679 *Public Health* **6**, e408–e415 (2021).
- 680 21. Krymova, E. *et al.* Trend estimation and short-term forecasting of COVID-19 cases
681 and deaths worldwide. *arXiv:2106.10203 [stat]* (2021).
- 682 22. SPF. COVID-19 : point épidémiologique du 6 mai 2021.
683 [https://www.santepubliquefrance.fr/maladies-et-traumatismes/maladies-et-infections-](https://www.santepubliquefrance.fr/maladies-et-traumatismes/maladies-et-infections-respiratoires/infection-a-coronavirus/documents/bulletin-national/covid-19-point-epidemiologique-du-6-mai-2021)
684 [respiratoires/infection-a-coronavirus/documents/bulletin-national/covid-19-point-](https://www.santepubliquefrance.fr/maladies-et-traumatismes/maladies-et-infections-respiratoires/infection-a-coronavirus/documents/bulletin-national/covid-19-point-epidemiologique-du-6-mai-2021)
685 [epidemiologique-du-6-mai-2021](https://www.santepubliquefrance.fr/maladies-et-traumatismes/maladies-et-infections-respiratoires/infection-a-coronavirus/documents/bulletin-national/covid-19-point-epidemiologique-du-6-mai-2021).
- 686 23. Pullano, G. *et al.* Underdetection of COVID-19 cases in France threatens epidemic
687 control. *Nature* 1–9 (2020) doi:10.1038/s41586-020-03095-6.
- 688 24. COVID-19: Willingness to be vaccinated | YouGov.
689 [https://yougov.co.uk/topics/international/articles-reports/2021/01/12/covid-19-willingness-](https://yougov.co.uk/topics/international/articles-reports/2021/01/12/covid-19-willingness-be-vaccinated)
690 [be-vaccinated](https://yougov.co.uk/topics/international/articles-reports/2021/01/12/covid-19-willingness-be-vaccinated).

- 691 25. Kiem, C. T. *et al.* Short and medium-term challenges for COVID-19 vaccination: from
692 prioritisation to the relaxation of measures. (2021).
- 693 26. Bubar, K. M. *et al.* Model-informed COVID-19 vaccine prioritization strategies by age
694 and serostatus. *Science* (2021) doi:10.1126/science.abe6959.
- 695 27. Matrajt, L., Eaton, J., Leung, T. & Brown, E. R. Vaccine optimization for COVID-19:
696 Who to vaccinate first? *Science Advances* **7**, eabf1374 (2020).
- 697 28. Lu, D. *et al.* Data-driven estimate of SARS-CoV-2 herd immunity threshold in
698 populations with individual contact pattern variations. *medRxiv* 2021.03.19.21253974
699 (2021) doi:10.1101/2021.03.19.21253974.
- 700 29. US COVID-19 Vaccination Tracking. <http://www.vaccinetracking.us/>.
- 701 30. Huang, B. *et al.* Integrated vaccination and physical distancing interventions to
702 prevent future COVID-19 waves in Chinese cities. *Nat Hum Behav* **5**, 695–705 (2021).
- 703 31. Moore, S., Hill, E. M., Tildesley, M. J., Dyson, L. & Keeling, M. J. Vaccination and
704 non-pharmaceutical interventions for COVID-19: a mathematical modelling study. *The*
705 *Lancet Infectious Diseases* **21**, 793–802 (2021).
- 706 32. Yang, J. *et al.* Despite vaccination, China needs non-pharmaceutical interventions to
707 prevent widespread outbreaks of COVID-19 in 2021. *Nat Hum Behav* 1–12 (2021)
708 doi:10.1038/s41562-021-01155-z.
- 709 33. Gozzi, N., Bajardi, P. & Perra, N. The importance of non-pharmaceutical interventions
710 during the COVID-19 vaccine rollout. *medRxiv* 2021.01.09.21249480 (2021)
711 doi:10.1101/2021.01.09.21249480.
- 712 34. Bosetti, P. *et al.* Epidemiology and control of SARS-CoV-2 epidemics in partially
713 vaccinated populations: a modeling study applied to France. (2021).
- 714 35. Grais, R. F. *et al.* Time is of the essence: exploring a measles outbreak response
715 vaccination in Niamey, Niger. *Journal of The Royal Society Interface* (2007)
716 doi:10.1098/rsif.2007.1038.
- 717 36. Finger, F. *et al.* The potential impact of case-area targeted interventions in response
718 to cholera outbreaks: A modeling study. *PLOS Medicine* **15**, e1002509 (2018).
- 719 37. Martin, S. *et al.* Post-licensure deployment of oral cholera vaccines: a systematic

- 720 review. *Bull World Health Organ* **92**, 881–893 (2014).
- 721 38. Capitano, B., Dillon, K., LeDuc, A., Atkinson, B. & Burman, C. Experience
722 implementing a university-based mass immunization program in response to a
723 meningococcal B outbreak. *Human Vaccines & Immunotherapeutics* **15**, 717–724 (2019).
- 724 39. Pegorie, M. *et al.* Measles outbreak in Greater Manchester, England, October 2012 to
725 September 2013: epidemiology and control. *Eurosurveillance* **19**, 20982 (2014).
- 726 40. Kirolos, A. *et al.* Imported case of measles in a university setting leading to an
727 outbreak of measles in Edinburgh, Scotland from September to December 2016.
728 *Epidemiology & Infection* **146**, 741–746 (2018).
- 729 41. Ontario's COVID-19 vaccination plan. *COVID-19 (coronavirus) in Ontario*
730 <https://covid-19.ontario.ca/ontarios-covid-19-vaccination-plan>.
- 731 42. Covid-19: More variant hotspots to get surge tests and jabs. *BBC News* (2021).
- 732 43. Welle (www.dw.com), D. COVID: Cologne project aims to vaccinate urban hot spots |
733 DW | 08.05.2021. *DW.COM* [https://www.dw.com/en/covid-cologne-project-aims-to-](https://www.dw.com/en/covid-cologne-project-aims-to-vaccinate-urban-hot-spots/a-57472989)
734 [vaccinate-urban-hot-spots/a-57472989](https://www.dw.com/en/covid-cologne-project-aims-to-vaccinate-urban-hot-spots/a-57472989).
- 735 44. COVID-19 : présence du variant indien dans l'Eurométropole et plan d'actions
736 immédiat. [http://www.grand-est.ars.sante.fr/covid-19-presence-du-variant-indien-dans-](http://www.grand-est.ars.sante.fr/covid-19-presence-du-variant-indien-dans-leurometropole-et-plan-dactions-immediat)
737 [leurometropole-et-plan-dactions-immediat](http://www.grand-est.ars.sante.fr/covid-19-presence-du-variant-indien-dans-leurometropole-et-plan-dactions-immediat).
- 738 45. COVID-19 : en Pays de Brest, la vaccination s'accélère.
739 <http://www.bretagne.ars.sante.fr/covid-19-en-pays-de-brest-la-vaccination-saccelere>.
- 740 46. Communiqué de presse - Covid-19 - La nécessité de se faire vacciner rapidement
741 pour éviter la propagation du virus, notamment du variant delta. [http://www.nouvelle-](http://www.nouvelle-aquitaine.ars.sante.fr/communique-de-presse-covid-19-la-necessite-de-se-faire-vacciner-rapidement-pour-eviter-la)
742 [aquitaine.ars.sante.fr/communique-de-presse-covid-19-la-necessite-de-se-faire-vacciner-](http://www.nouvelle-aquitaine.ars.sante.fr/communique-de-presse-covid-19-la-necessite-de-se-faire-vacciner-rapidement-pour-eviter-la)
743 [rapidement-pour-eviter-la](http://www.nouvelle-aquitaine.ars.sante.fr/communique-de-presse-covid-19-la-necessite-de-se-faire-vacciner-rapidement-pour-eviter-la).
- 744 47. Valdano, E., Lee, J., Bansal, S., Rubrichi, S. & Colizza, V. Highlighting socio-
745 economic constraints on mobility reductions during COVID-19 restrictions in France can
746 inform effective and equitable pandemic response. *Journal of Travel Medicine* **28**, (2021).
- 747 48. Xu, W., Su, S. & Jiang, S. Ring vaccination of COVID-19 vaccines in medium- and
748 high-risk areas of countries with low incidence of SARS-CoV-2 infection. *Clin Transl Med*

- 749 **11**, e331 (2021).
- 750 49. MacIntyre, C. R., Costantino, V. & Trent, M. Modelling of COVID-19 vaccination
751 strategies and herd immunity, in scenarios of limited and full vaccine supply in NSW,
752 Australia. *Vaccine* (2021) doi:10.1016/j.vaccine.2021.04.042.
- 753 50. Muller, C. P. Can integrated post-exposure vaccination against SARS-COV2 mitigate
754 severe disease? *The Lancet Regional Health – Europe* **5**, (2021).
- 755 51. Althouse, B. M. *et al.* Superspreading events in the transmission dynamics of SARS-
756 CoV-2: Opportunities for interventions and control. *PLOS Biology* **18**, e3000897 (2020).
- 757 52. Leclerc, Q. J. *et al.* What settings have been linked to SARS-CoV-2 transmission
758 clusters? *Wellcome Open Research* **5**, 83 (2020).
- 759 53. Christensen, H. *et al.* COVID-19 transmission in a university setting: a rapid review of
760 modelling studies. *medRxiv* 2020.09.07.20189688 (2020)
761 doi:10.1101/2020.09.07.20189688.
- 762 54. Coronavirus : circulation des variants du SARS-CoV-2.
763 [https://www.santepubliquefrance.fr/dossiers/coronavirus-covid-19/coronavirus-circulation-](https://www.santepubliquefrance.fr/dossiers/coronavirus-covid-19/coronavirus-circulation-des-variants-du-sars-cov-2)
764 [des-variants-du-sars-cov-2.](https://www.santepubliquefrance.fr/dossiers/coronavirus-covid-19/coronavirus-circulation-des-variants-du-sars-cov-2)
- 765 55. Metcalf, C. J. E. *et al.* Seven challenges in modeling vaccine preventable diseases.
766 *Epidemics* **10**, 11–15 (2015).
- 767 56. Mistry, D. *et al.* Inferring high-resolution human mixing patterns for disease modeling.
768 *arXiv:2003.01214 [physics, q-bio]* (2020).
- 769 57. Béraud, G. *et al.* The French Connection: The First Large Population-Based Contact
770 Survey in France Relevant for the Spread of Infectious Diseases. *PLOS ONE* **10**,
771 e0133203 (2015).
- 772 58. COVID-19 Community Mobility Report. *COVID-19 Community Mobility Report* [https://](https://www.google.com/covid19/mobility?hl=en)
773 [www.google.com/covid19/mobility?hl=en.](https://www.google.com/covid19/mobility?hl=en)
- 774 59. Personal measures taken to avoid COVID-19 | YouGov.
775 [https://yougov.co.uk/topics/international/articles-reports/2020/03/17/personal-measures-](https://yougov.co.uk/topics/international/articles-reports/2020/03/17/personal-measures-taken-avoid-covid-19)
776 [taken-avoid-covid-19.](https://yougov.co.uk/topics/international/articles-reports/2020/03/17/personal-measures-taken-avoid-covid-19)
- 777 60. Davies, N. G. *et al.* Age-dependent effects in the transmission and control of COVID-

- 778 19 epidemics. *Nature Medicine* 1–7 (2020) doi:10.1038/s41591-020-0962-9.
- 779 61. Di Domenico, L., Pullano, G., Sabbatini, C. E., Boëlle, P.-Y. & Colizza, V. Modelling
780 safe protocols for reopening schools during the COVID-19 pandemic in France. *Nat*
781 *Commun* **12**, 1073 (2021).
- 782 62. Riccardo, F. *et al.* Epidemiological characteristics of COVID-19 cases and estimates
783 of the reproductive numbers 1 month into the epidemic, Italy, 28 January to 31 March
784 2020. *Eurosurveillance* **25**, 2000790 (2020).
- 785 63. Kissler, S. M. *et al.* *Viral dynamics of SARS-CoV-2 variants in vaccinated and*
786 *unvaccinated individuals*. 2021.02.16.21251535
787 <https://www.medrxiv.org/content/10.1101/2021.02.16.21251535v3> (2021)
788 doi:10.1101/2021.02.16.21251535.
- 789 64. Blanquart, F. *et al.* Characterisation of vaccine breakthrough infections of SARS-CoV-
790 2 Delta and Alpha variants and within-host viral load dynamics in the community, France,
791 June to July 2021. *Eurosurveillance* **26**, 2100824 (2021).
- 792 65. Dagan, N. *et al.* BNT162b2 mRNA Covid-19 Vaccine in a Nationwide Mass
793 Vaccination Setting. *New England Journal of Medicine* (2021)
794 doi:10.1056/NEJMoa2101765.
- 795 66. Smith, L. E. *et al.* Adherence to the test, trace and isolate system: results from a time
796 series of 21 nationally representative surveys in the UK (the COVID-19 Rapid Survey of
797 Adherence to Interventions and Responses [CORSAIR] study). *medRxiv* (2020)
798 doi:10.1101/2020.09.15.20191957.
- 799 67. PYB-SU. PYB-SU/ReactiveVaccination.
800 <https://github.com/PYB-SU/ReactiveVaccination> (2021).

801 **Acknowledgements**

802 We acknowledge financial support from Haute Autorité de Santé; the ANR and Fondation de
803 France through the project NoCOV (00105995); the Municipality of Paris
804 (<https://www.paris.fr/>) through the programme Emergence(s); EU H2020 grants MOOD
805 (H2020-874850), and RECOVER (H2020-101003589); the ANRS through the project

806 EMERGEN (ANRS0151); the ANR through the project SPHINX (ANR-17-CE36-0008-05);

807 Institut des Sciences du Calcul et de la Donnée. Supplementary Information

808

809

810 **Supplementary Information**811 **Additional Methods**

812

813 **COVID-19 transmission model**

814 We provide here in the following the parameter values for transmission and infection natural
 815 history (Table S1), and the effect of vaccination (Table S2). For a detailed explanation of the
 816 transmission model without vaccination we refer to ¹. Incubation period IP and length of the
 817 pre-symptomatic phase μ_p are specific for the Delta variant. In particular, μ_p is parametrised
 818 based on the proportion of pre-symptomatic transmission estimated in ².

819

820 **Table S1. Transmission parameters and their baseline values.**

Parameter	Description	Baseline value (other explored values)	Source
IP	Incubation period	5.8 days (5.1 days, 6.3 days)	² (^{3,4})
μ_p	Rate of developing symptoms for pre-symptomatic individuals	(2.1 days) ⁻¹	Computed to recover 74% of pre-symptomatic transmission as estimated in ²
ϵ	Rate of becoming infectious for exposed individuals	(3.7 days) ⁻¹	$IP - \mu_p^{-1}$
μ	Recovery rate	(7 days) ⁻¹	⁵
β_I	transmissibility rescaling according to the infectious stage	0.51 for $I_{p,sc}, I_{sc}$ 1 for $I_{p,c}, I_c$	⁶
ω_s	Transmission risk by setting (network layer)	1 for H layer 0.3 for C layer 0.5 otherwise	¹

821

822 **Table S2. Vaccine effectiveness parameters and their baseline values.**

Parameter	Description	Baseline value	Source
-----------	-------------	----------------	--------

		(other explored values)	
$r_{S,1}$	reduction in susceptibility in the partial-protection stage	0.52 (0.35, 0.7)	from $VE_{S,1} = 48\%$, in the middle of the range of estimates after one dose in ⁷ (from 30%, 65%, worst and best estimates from ⁷ , respectively)
τ_0	Average duration of the no-protection stage after first-dose inoculation	$(2 \text{ weeks})^{-1}$ ($(1 \text{ week})^{-1}$)	
$r_{S,2}$	reduction in susceptibility in the maximum-protection stage	0.3 (0.2, 0.47)	from $VE_{S,2} = 70\%$, in the middle of the range of estimates after two doses in ⁷ (from 53%, 80%, worst and best estimates from ⁷ , respectively)
$r_{c,2}$	reduction in the probability of developing clinical symptoms in the maximum-protection stage	0.9 (0.4, 0.95)	from $VE_{SP,2} = 73\%$, in the middle of the range of estimates after two doses in ⁷ (from 60%, 95%, worst and best estimates from ⁷ , respectively)
τ_1	Average duration of the intermediate-protection stage	$(3 \text{ weeks})^{-1}$ ($(4 \text{ week})^{-1}$, $(8 \text{ week})^{-1}$)	⁸
p_V	Probability of transition between $S^{V,1}$ and E^V	0.97 (0.65, 0.82)	Computed from the parameters above and assuming $VE_{SP,1} = 53\%$, in the middle of the range of estimates after one dose in ⁷ (from 35%, 75%, worst and best estimates from ⁷ , respectively) (*)
r_I	Reduction in infection duration	25% (0)	⁹

823 (*) Mid range estimate in ⁷, $VE_{SP} = 55\%$, leads to a value of $p_V > 1$, thus $VE_{SP} = 53\%$ is taken.

824

825 Test-trace-isolate

826 We model case detection and isolation, combined with tracing and isolation of contacts
827 according to the following rules:

- 828 • As an individual shows clinical symptoms, s/he is detected with probability $p_{d,c}$. If
829 detected, case confirmation and isolation occur with rate r_d upon symptoms onset.
- 830 • Subclinical individuals are also detected with probability $p_{d,sc}$, and rate r_d .

- 831 • The index case's household contacts are isolated, with probability $p_{ct,HH}$, the same time
832 the index case is detected and isolated. We assume that these contacts are tested at the
833 time of isolation and among those all subclinical, clinical, pre-subclinical, and pre-clinical
834 cases are detected (testing sensitivity 100%).
- 835 • Once the index case is detected, contacts of the index case occurring outside the
836 household are traced and isolated with an average delay r_{ct}^{-1} . We define an acquaintance
837 as a contact occurring frequently, i.e. with a frequency of activation higher than f_a . We
838 assume that an acquaintance is detected and isolated with a probability $p_{ct,A}$, while other
839 contacts (i.e. sporadic contacts) are detected and isolated with probability $p_{ct,sp}$, with
840 $p_{ct,A} > p_{ct,sp}$. We assume that traced contacts are tested at the time of isolation and among
841 those all subclinical, clinical, pre-subclinical, and pre-clinical cases are detected (testing
842 sensitivity 100%).
- 843 • Only contacts (among contacts occurring both in household and outside) occurring within
844 a window of D days before index case detection are considered for contact tracing.
- 845 • The index-case and the contacts are isolated for a duration d_I (for all infected
846 compartments) and d_c (for susceptible and recovered compartments). Contacts with no
847 clinical symptoms have a daily probability p_{drop} to drop out from isolation.
- 848 • For both the case and the contacts, isolation is implemented by assuming no contacts
849 outside the household and transmission risk per contact within a household reduced by a
850 factor ι .

851 Parameter values are reported in Table S3 and Table S4 for baseline and enhanced TTI,
852 respectively.

853

854 **Table S3. Model for test, trace, isolation. Parameters and their values for the baseline case.**

Parameter	Description	Value	Source
$p_{d,c}$	Probability that a clinical case is detected	0.5	
$p_{d,sc}$	Probability that a subclinical case is detected	0.1	
r_d	For detected cases, rate of detection, confirmation and beginning of isolation	$0.28 = (3.6 \text{ days})^{-1}$	Average time from onset to testing is 2.6 days ¹⁰ . We assume one day to have the test results.

D	Length of the period preceding index-case confirmation, used to define a contact	6 days (*)	$\simeq 2 \text{ days} + \dot{\iota} r_d^{-1}$ (a person is considered to be contact if s/he entered in contact with the index case during a window of 2 days preceding symptoms onset)
$p_{ct,HH}$	Probability that household contacts of an index case are identified and decide to isolate	0.7	
$p_{ct,A}$	Probability that acquaintances of an index case are identified and decide to isolate	0.08	Calibrated to get $\simeq 2.8$ contacts per index case on average (assumed $p_{ct,Oth} = p_{ct,A} / 10 \dot{\iota}$ ₁₀)
$p_{ct,Oth}$	Probability that sporadic contacts of an index case are identified and decide to isolate	0.008	Calibrated to get $\simeq 2.8$ contacts per index case on average (assumed $p_{ct,Oth} = p_{ct,A} / 10 \dot{\iota}$ ₁₀)
r_{ct}	Rate of detection and isolation of contacts outside household	$0.9 = (1.1 \text{ days})^{-1}$	
f_a	Threshold frequency to define a contact as an acquaintance	1/7 days	
p_{do}	Probability to drop out from isolation for individuals that are not clinical	0.13	¹¹
ι	Reduction in household transmission during isolation	0.5	
d_i, d_I	Duration of isolation for an individual that is not infectious, duration of isolation for an individual that is infectious	10 days, 10 days	¹²

855

856 **Table S4. Model for case test, trace, isolation. Parameters and their values for the case of enhanced TTI.**
857 **Only values different from the baseline case are reported.**

Parameter	Description	Baseline value (other explored values)
$p_{d,c}$	Probability that a clinical case is detected	0.7 (1)
$p_{d,sc}$	Probability that a subclinical case is detected	0.3 (0.5)
r_d	For detected cases, rate of detection, confirmation and beginning of isolation	$0.9 = (1.1 \text{ days})^{-1}$

$p_{ct,HH}$	Probability that household contacts of an index case are identified and decide to isolate	1
$p_{ct,A}$	Probability that acquaintances of an index case are identified and decide to isolate	0.24
$p_{ct,Oth}$	Probability that sporadic contacts of an index case are identified and decide to isolate	0.024
p_{do}	Probability to drop out from isolation for individuals that are not clinical	0

858

859 Vaccination strategies

860 We provide here in the following the parameters values for the vaccination strategies detailed
861 in the Methods section of the main paper.

862

863 **Table S5. Vaccine administering. Parameters and their baseline values.**

Parameter	Description	Baseline values (other explored values)
$a_{th,V}$	Minimum age for vaccination	12 years
p_V^a	Probability an individual is willing to vaccinate	90% for 65+ 80% for <65 (60%, 100%)
n_{cl}	For reactive vaccination, cluster size for triggering reactive vaccination in a workplace	1 (2, 3, 4, 5)
T_{cl}	For reactive vaccination, time window for cluster definition	7 days
$(r_V)^{-1}$	For reactive vaccination, delay of implementation of the vaccination campaign once the cluster is identified (for workplaces/schools) and a case is identified (for households)	2 days (1 day, 4 days)
V_{TOT}	Maximum number of people vaccinated during one simulation	Unlimited
V_{day}	Maximum number of people vaccinated each day	[50, 500] per 100,000 inhabitants per day for Mass, workplaces/universities, school location Unlimited for reactive ([50, 250] per 100,000)

		inhabitants per day)
$i_i th_i$	For WP/U, minimum size of a workplace that implement vaccination	20
n_{RV}	For reactive vaccination, cluster size for starting the reactive vaccination campaign in the flare up scenario	1, 5, 10
	Initial vaccination coverage	90% for 65+ 40% for <65 (15%, 25%, 35%, 45%, 55%, 65%, 75%)

864

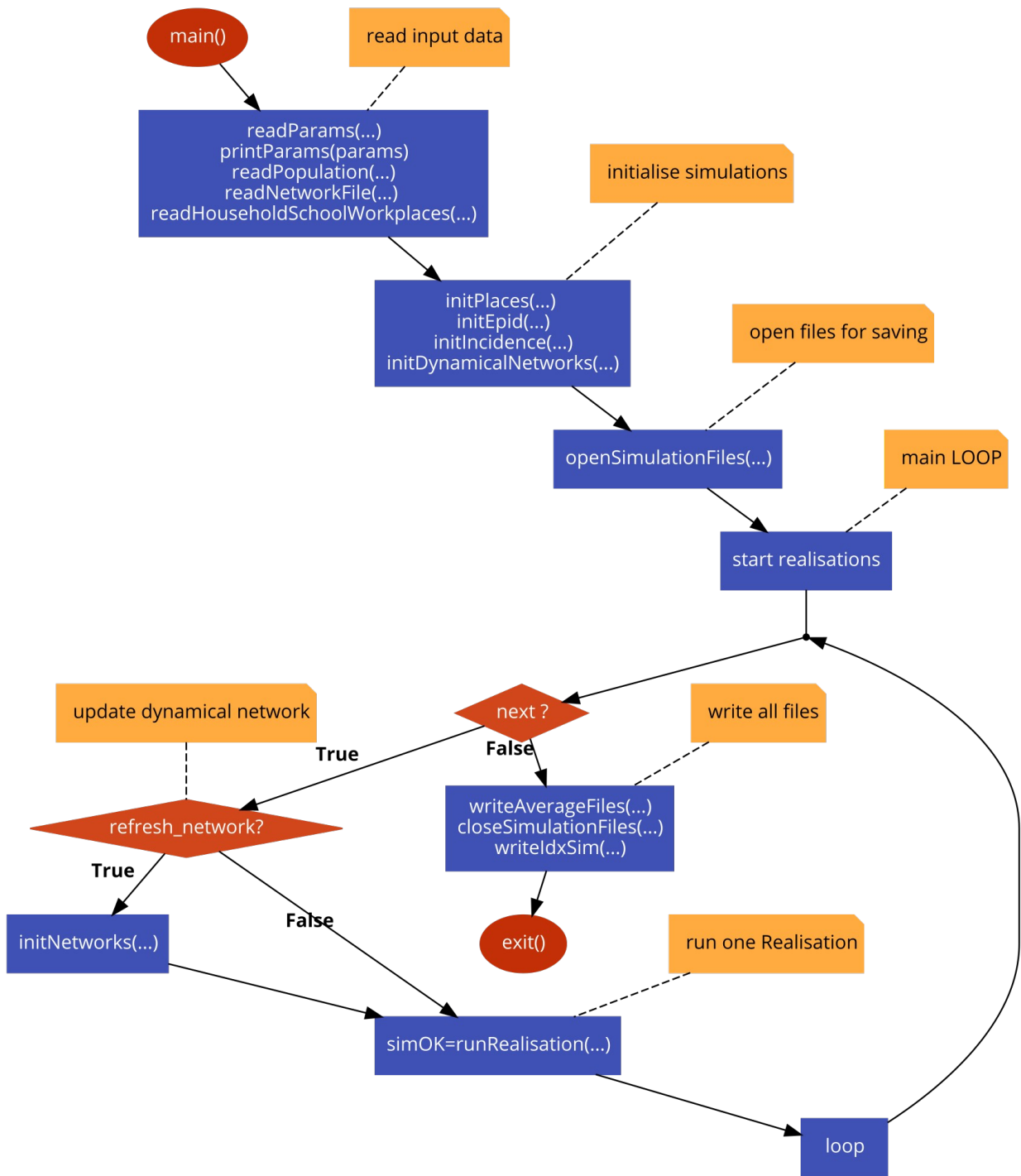
865 **Details on the epidemic simulations**

866 A schematic representation of the main program and of the simulation code and of the
867 algorithm used for a single stochastic realisation are shown in Figure S1 and S2, respectively.
868 Simulations are discrete-time and stochastic. At each time step, corresponding to one day,
869 three processes occur (Figure S2):

870 *Vaccination Step*: vaccines are administered according to the strategy or the strategies'
871 combination.

872 *Testing Step*: cases are detected and isolated; contacts (within and outside household) are
873 identified and isolated; isolated individuals get out from isolation.

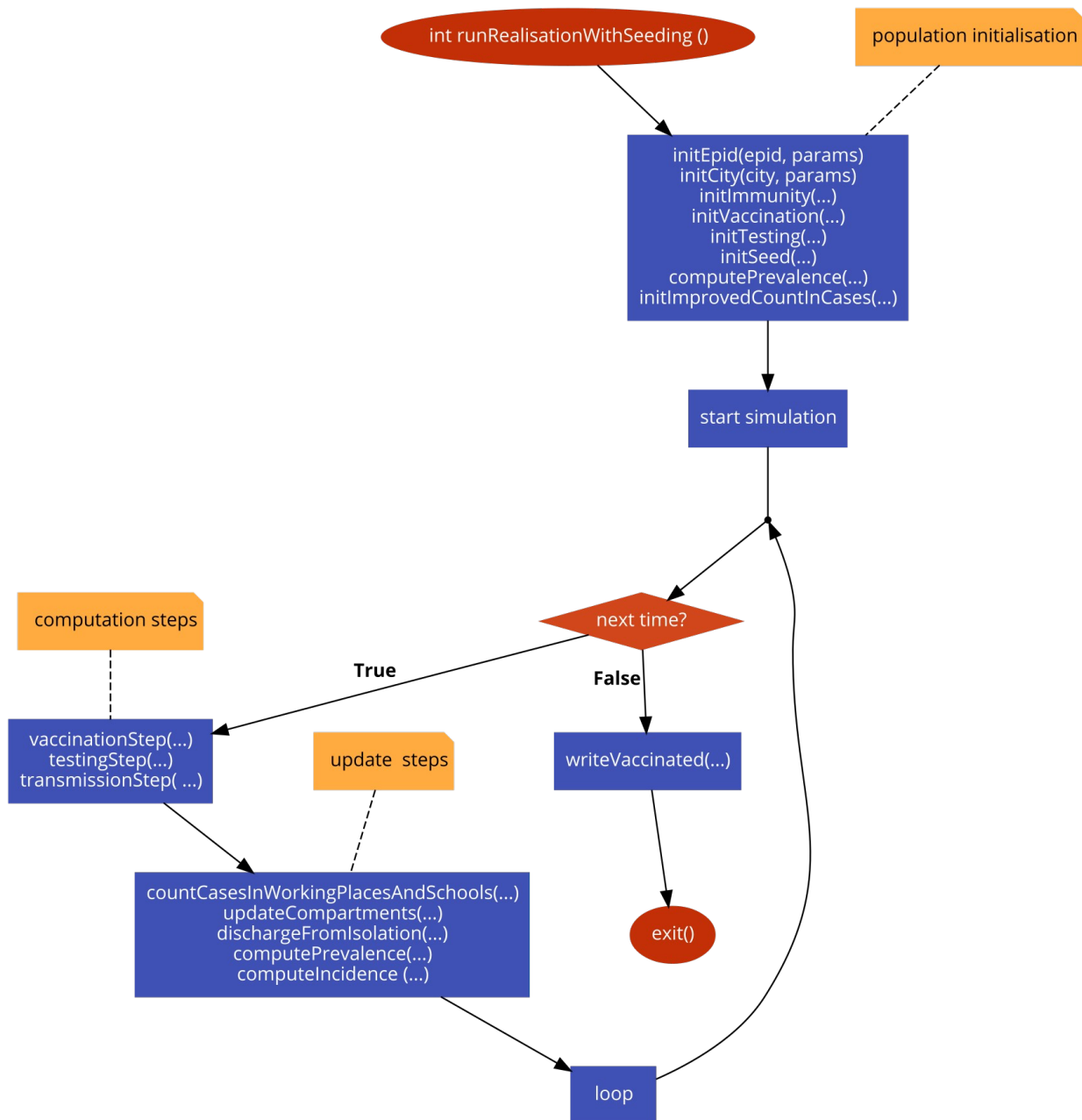
874 *Transmission Step*: infectious status of nodes is updated. This includes transmission,
875 recovery and transition through the different stages of the infection (e.g. from exposed to pre-
876 symptomatic, from pre-symptomatic to symptomatic).



877

878 **Figure S1.** Algorithm of the main program. (drawn with code2flow.com)

879



880

881 **Figure S2.** Algorithm for one stochastic realisation. (drawn with code2flow.com)

882

883 A single-run simulation is executed with no modelled intervention, until the desired immunity
 884 level is reached. This guarantees that immune individuals are realistically clustered on the
 885 network. We added some noise, by reshuffling the immune/susceptible status of 30% of the
 886 nodes to account for travelling, infection reintroduction from other locations and large
 887 gathering with consequent super-spreading not accounted for by the model. In Figure 2 and 3
 888 of the main paper, all processes (transmission, TTI, vaccination) are simulated from the
 889 beginning of the simulation. In the scenario with virus re-introduction (Figure 4), TTI and mass
 890 vaccination are modelled from the beginning. TTI is enhanced from the detection of the first

891 case. Reactive vaccination starts after the detection of the first n_{RV} cases, with $n_{RV}=1,5,10$
892 explored.

893 We vary COVID-19 transmission potential by tuning the daily transmission rate per contact β .
894 The reproductive number R is computed numerically as the average number of infections
895 each infected individual generates throughout its infectious period at the beginning of the
896 simulation. We tune β to have the desired R value (1.6 for the analysis in the main text) for
897 the reference scenario - i.e. with only vaccination at the start. We then compare different
898 vaccination strategies at the same value of transmissibility β .

899 To calibrate the duration of the pre-symptomatic stage from ² (value reported in Table S1) we
900 generated an output file containing the list of all transmission events with the infection status
901 of the infector. The proportion of pre-symptomatic transmission was computed as the fraction
902 of transmission events with infector in the compartment $I_{p,sc}$ or $I_{p,c}$ over all infection events.

903

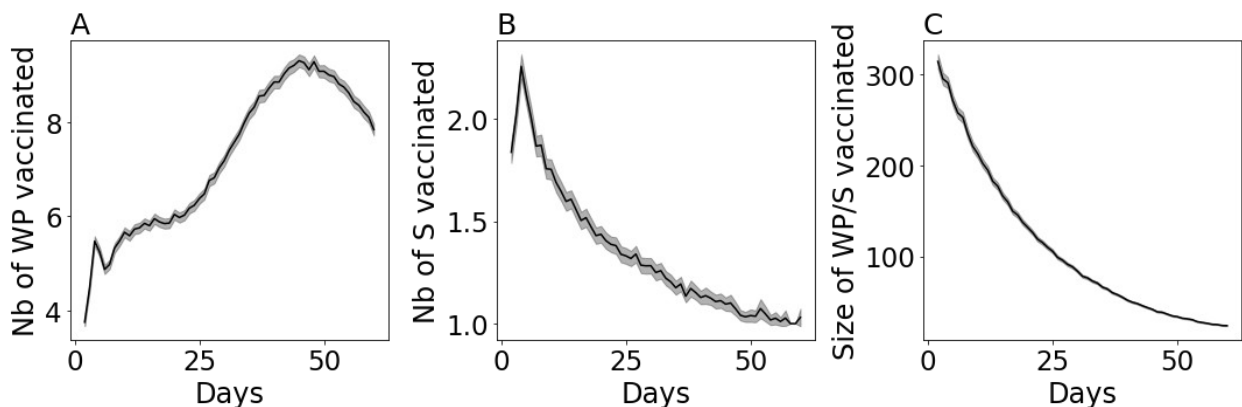
904 **Additional Results**

905 **Comparison between reactive and non-reactive vaccination strategies**

906 **Vaccinated settings**

907 We provide here a detailed analysis of the time evolution of the number of settings where
908 vaccines are deployed in the context of reactive vaccination.

909



910

911 **Figure S3. A, B** Daily number of workplaces (A) and schools (B) where vaccines are deployed in the context of
912 reactive vaccination. **C** Size of workplaces/Schools where vaccines are deployed as a function of time. Values
913 are means over 2000 stochastic simulations. Shaded areas indicate the standard errors.

914

915

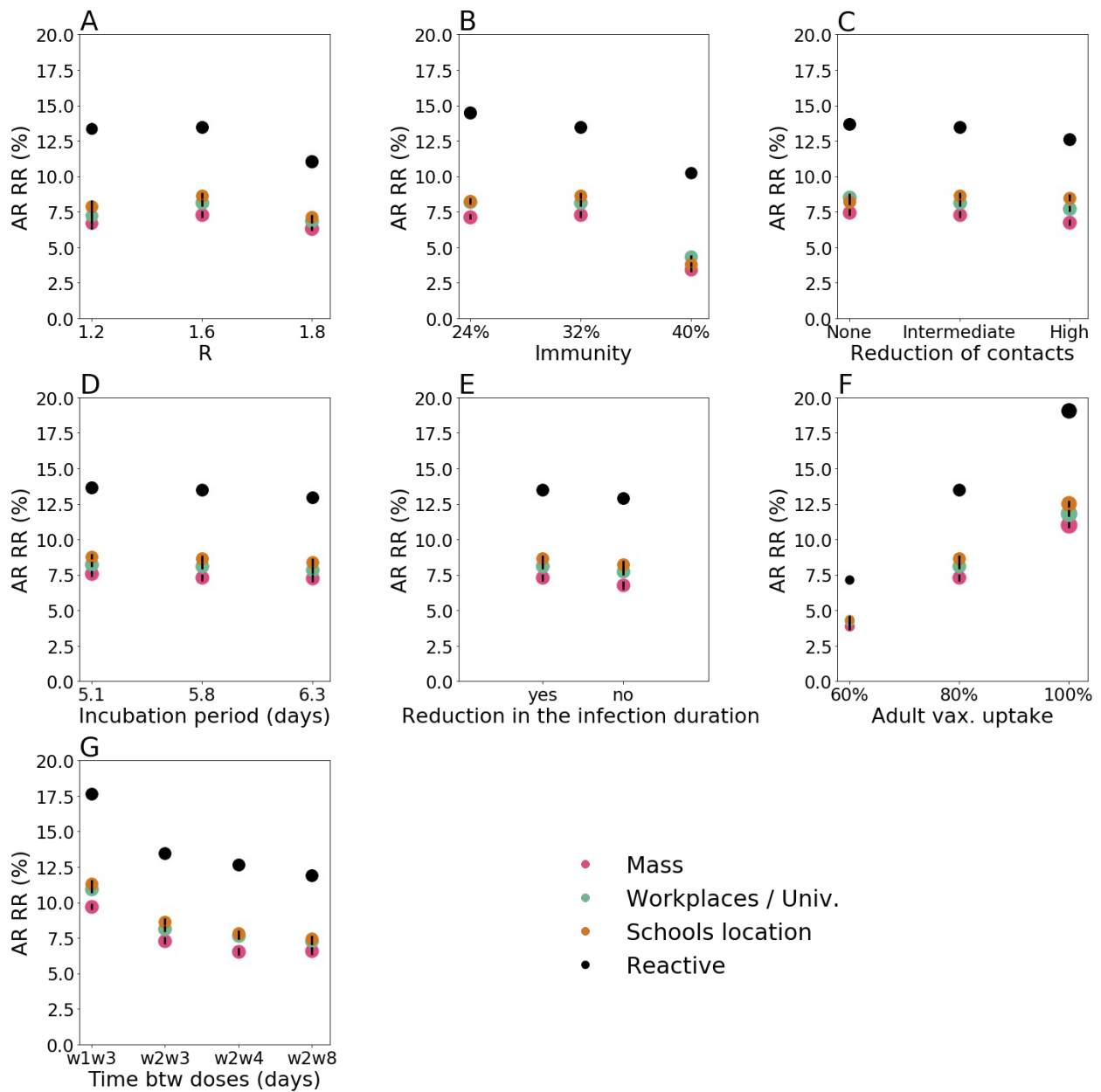
916 **Sensitivity analysis**

917 We compare here reactive vaccination with non-reactive vaccination strategies under a
918 variety of epidemic scenarios.

919 In Figure S4 we compare all strategies at equal number of doses over the two month period,
920 exploring the impact of the following parameters: reproductive ratio, immunity level of the
921 population, repartition of contacts across settings due to social distancing, incubation period,
922 effect of the vaccine in the infection duration, vaccine uptake, and time between doses.

923 Except when otherwise indicated, parameters are the ones of Figure 2 D, E of the main
924 paper, i.e. intermediate vaccination coverage at the beginning (~45% of the whole population
925 vaccinated), moderate/high initial incidence and the vaccine uptake to be the same for all
926 strategies. Increasing the transmissibility or initial immunity reduces the impact of reactive
927 vaccination (panel A, B). In panel C we explore the impact of teleworking and reduction in
928 community contact by comparing the baseline scenario with scenarios with no or stronger
929 restrictions. Reactive vaccination becomes more effective when no restriction is in place -
930 although the effect is not strong. This is likely due to the enhanced role of workplaces as a
931 setting of transmission when no teleworking is in place, thus bringing to an increased benefit
932 of reactive vaccination targeting this setting. In panel D, we analyse the impact of the choice
933 of the incubation period exploring incubation period values ranging from 5.1³ up to 6.3⁴. We
934 find that results are highly robust to the choice of the parameters, within this range. In panel E
935 we compare different hypotheses regarding the effect of the vaccine on the infection duration,
936 i.e. the baseline case with the case in which the vaccine induces no reduction in the infectious
937 duration. Also in this case, results are robust. Eventually in panel F we compare different
938 levels of vaccine uptake, assuming uptake to be the same in all strategies as in Figure 2 of
939 the main paper. The impact of vaccination increases with the uptake, the effect being stronger
940 for the reactive strategy. Eventually, we compare in panel G different timing for vaccine-
941 induced immunity to become effective. Specifically, we consider a case in which partial
942 protection against infection mounts one week after the first dose. Assuming an incubation
943 period of ~6 days, this would be consistent with no reduction in cases observed ~2 weeks
944 after first-dose inoculation, as reported by some real vaccine effectiveness studies^{14,15}. We
945 then consider a longer interval between doses (i.e. 4 and 8 weeks). Assuming that protection
946 against infection starts one week after first-dose inoculation leads to a higher impact of
947 vaccination for all four vaccination strategies.

948



949

950

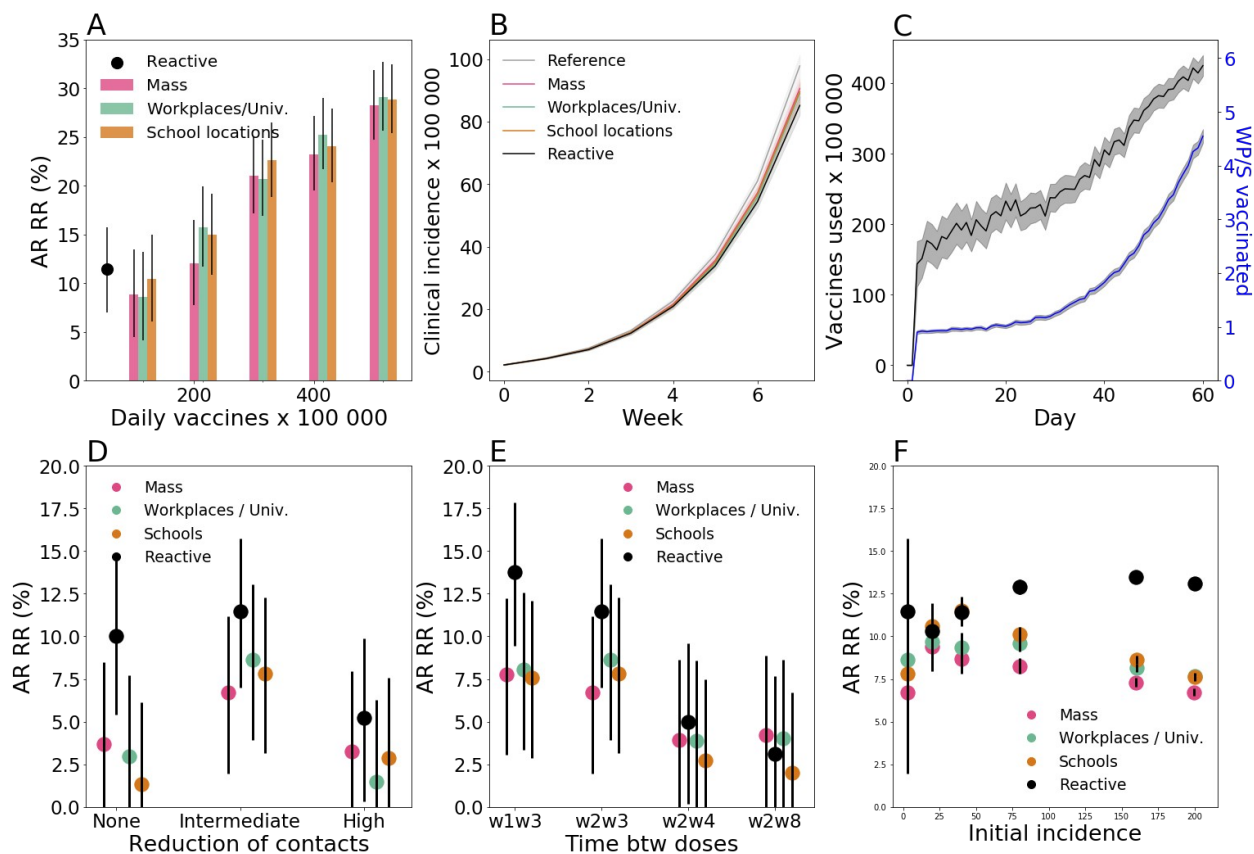
951 **Figure S4.** Relative reduction (RR) in the attack rate (AR) after two months for all strategies at equal number of
 952 doses. RR is computed with respect to the reference scenario with initial vaccination only. Different parameter
 953 values and modelling assumptions are compared. Vaccination rate for mass, workplaces/universities and school
 954 location vaccination is set to the average value recovered for reactive vaccination. Exceptions made for the
 955 parameter explored in each panel - indicated in the x-axis -, all parameters are as in panel D, E of Figure 2 of the
 956 main paper. Parameters explored are: **A** reproductive ratio; **B** natural immunity of the population at the start; **C**
 957 repartition of contacts across settings due to social distancing (*Intermediate* is the baseline scenario, while *high* is
 958 given by a 30% reduction in community contacts and a 20% of individuals doing teleworking); **D** incubation period,
 959 **E** vaccine-induced reduction in infection duration (yes, no), **F** vaccine uptake, and **G** time between doses - the x-
 960 axis labels wNwM indicates the average number of weeks, N and M, of no protection following first dose
 961 inoculation and of intermediate vaccine effectiveness, respectively. Values are means over 2000 stochastic
 962 simulations. Error bars are derived from the standard errors of the AR. These are smaller than the size of the dots
 963 in almost all cases.

965 The impact of reactive vaccination and its demand in terms of vaccine doses varies
966 depending on the incidence level. In Figure S5 A-C we compare all strategies under a
967 scenario of flare-up of cases. We assumed three cases were infected at the beginning.
968 Panels A, B of Figure S5 are the analogous of panel B, E of the Figure 2 of the main paper
969 and are obtained with the same parameters exception made for the value of initial incidence -
970 notably, we assumed intermediate vaccination coverage at the beginning (~45% of the whole
971 population vaccinated) and the vaccine uptake to be the same for all strategies. Panel A
972 shows the relative reduction in the attack rate after two months as a function of the number of
973 first daily doses, while Panel B compares the incidence profiles under different strategies at
974 equal number of vaccine doses. The relative reduction produced by reactive vaccination is
975 close to the one produced by mass, school location and workplaces/universities. Panel C
976 shows the number of vaccines deployed each day for reactive vaccination and the number of
977 workplaces/schools where vaccines are deployed. These are initially low and increase
978 gradually with incidence.

979 We then explore the impact of the reactive vaccination within the flare-up case in varying the
980 different parameters. Specifically, we compare all strategies at an equal number of doses,
981 varying the level of social distancing (Figure S5 D, analogously to Figure S4 C) and the timing
982 for the immunity to mount after the first-dose vaccination (Figure S5 E, analogously to Figure
983 S4 G). For certain parameter values reactive vaccination produces a higher relative reduction
984 in the attack rate compared with non-reactive strategies. This is the case for instance when
985 the development of vaccine immunity is rapid, and when no social restrictions are in place. In
986 other cases it produces comparable effect. This is the case for instance of long delays
987 between doses. Finally, in Figure S5 F, we provide an overview of the impact of initial
988 incidence. As initial incidence increases the advantage of the reactive vaccination compared
989 with the non-reactive strategies increases.

990

991



992

993 **Figure S5. A** Relative reduction (RR) in the attack rate (AR) over the first two months for all strategies as a
 994 function of the vaccination pace. RR is computed with respect to the reference scenario, with initial vaccination
 995 only. AR is computed from clinical cases. **B** Incidence of clinical cases with different vaccination strategies. The
 996 reactive and non-reactive scenarios plotted are obtained with the same average daily number of vaccines, i.e. 55
 997 daily first-dose vaccinations per 100,000 inhabitants. **C** Number of daily first-dose vaccinations, and
 998 workplaces/schools (WP/S in the plot) where vaccines are deployed. **D** AR RR after two months according to the
 999 repartition of contacts across settings due to social distancing - *Intermediate* is the baseline scenario, while *high* is
 1000 given by a 30% reduction in community contacts and a 20% of individuals doing teleworking. **E** AR RR after two
 1001 months according to the timing for the immunity to mount after first-dose vaccination - the x-axis labels wNwM
 1002 indicates the average number of weeks, N and M, of no protection following first dose inoculation and of
 1003 intermediate vaccine effectiveness, respectively. **F** AR RR after two months according to the initial incidence for
 1004 all strategies at equal number of doses. In panels D-F all strategies are compared at equal number of doses. All
 1005 panels, except for panel F, consider a flare up scenario, where the epidemic is seeded with 3 infectious
 1006 individuals. All other parameters are as in panels D, E of Figure 2 of the main paper. Values are means over
 1007 2000 stochastic simulations. Error bars in panels A, D, E, F are derived from the standard errors of the AR.
 1008 Shaded areas in panels B, C, indicate the standard errors.

1009

1010 Additional epidemic outcomes

1011 Based on the estimated incidence of clinical cases per day provided by the transmission
 1012 model, we infer outcomes related to hospital, namely hospital and intensive care unit (ICU)
 1013 entries, beds in ICU ward, and deaths. We use age-dependent hospital admissions (ICU and
 1014 non-ICU) risks estimated by ^{16,17} and ICU admission risks for hospitalised patients based on
 1015 SI-VIC extract ¹⁸. Hospital admissions risks were adjusted to apply only to clinical cases ¹⁹ and

1016 to account for vaccine effectiveness for hospitalisation for zero, half (1 dose) and full (2
 1017 doses) vaccination. We assumed the vaccine efficacies for hospitalisation were equal to 83%
 1018 and 94% for half and full vaccinations, respectively⁷. We also assume that the hospital
 1019 admission risk increases by 80% with the Delta variant compared to Alpha²⁰ and by 40% with
 1020 the Alpha variant compared to the wild type²¹. Patients who were hospitalised entered the
 1021 hospital on average 7 days (sd = 3.9 days – Gamma distribution) after the beginning of the
 1022 infectious phase²². Those who were admitted in ICU enter this unit with a mean delay of 1.69
 1023 days (assuming an exponential distribution)¹⁸. To estimate the number of occupied beds, we
 1024 use age-specific mean durations of stay and their corresponding standard deviations in ICU
 1025 calculated on all the hospitalised cases in the first 9 months of the French epidemic (March-
 1026 November 2020)¹⁸. We assume that the standard deviations of ICU lengths of stay were equal
 1027 to the corresponding mean and do not consider post-ICU care in the estimation of occupied
 1028 beds. We estimate the number of deaths using hospital and ICU death risks of hospitalised
 1029 infected persons¹⁸. Deaths are delayed in time using the mean delays and standard
 1030 deviations from hospital or ICU admission to death¹⁸. All lengths of stay are supposed to
 1031 follow a Gamma distribution. Parameters and their values are summarised in Tables S6 and
 1032 S7.

1033 We also estimate the number of life years and quality-adjusted life years (QALY) lost for each
 1034 death using life-tables provided by ‘French National Institute of Statistics and Economic
 1035 Studies’ (INSEE) for 2012-2016²³ and utility measures of each age-group in France²⁴.

1036

1037 **Table S6. Risks of hospitalisation according to vaccination status, ICU admission and death in general**
 1038 **ward and ICU**

Age Group	Hospitalisation risk for no-vaccination	Hospitalisation risk for half vaccination (1 dose)	Hospitalisation risk for full vaccination (2 doses)	ICU admission risk	Death risk in general ward	Death risk in ICU
0-9	0.0246	0.0115	0.0066	0.159	0.006	0.078
10-19	0.0136	0.0063	0.0037	0.159	0.006	0.078
20-29	0.0364	0.0170	0.0098	0.159	0.006	0.078
30-39	0.0443	0.0207	0.0119	0.159	0.006	0.078
40-49	0.0617	0.0288	0.0166	0.219	0.016	0.103

50-59	0.1697	0.0792	0.0457	0.270	0.030	0.175
60-69	0.2360	0.1101	0.0635	0.299	0.064	0.268
70-79	0.5113	0.2386	0.1377	0.235	0.140	0.366
79+	0.9496	0.4431	0.2557	0.053	0.308	0.468

1039

1040 **Table S7. Delays from hospitalisation admission in general ward to death or hospital discharge and delays**
1041 **from ICU admission to ICU discharge or death.**

Age Group	Mean los in general ward (sd)	Mean los in general ward for dying people (sd)	Mean los in ICU (sd)	Mean los in ICU for dying people (sd)
0-9	6.4 (6.8)	10.6 (12.3)	12.7 (12.7)	22.3 (22.3)
10-19	6.4 (6.8)	10.6 (12.3)	12.7 (12.7)	22.3 (22.3)
20-29	6.4 (6.8)	10.6 (12.3)	12.7 (12.7)	22.3 (22.3)
30-39	6.4 (6.8)	10.6 (12.3)	12.7 (12.7)	22.3 (22.3)
40-49	6.4 (6.8)	10.6 (12.3)	12.7 (12.7)	22.3 (22.3)
50-59	6.4 (6.8)	10.6 (12.3)	12.7 (12.7)	22.3 (22.3)
60-69	9.3 (9.1)	10.6 (12.3)	16.7 (16.7)	20.8 (20.8)
70-79	11.7 (11.4)	10.6 (12.3)	17.5 (17.5)	18.9 (18.9)
79+	15 (13.8)	10.6 (12.3)	13.6 (13.6)	10.6 (10.6)

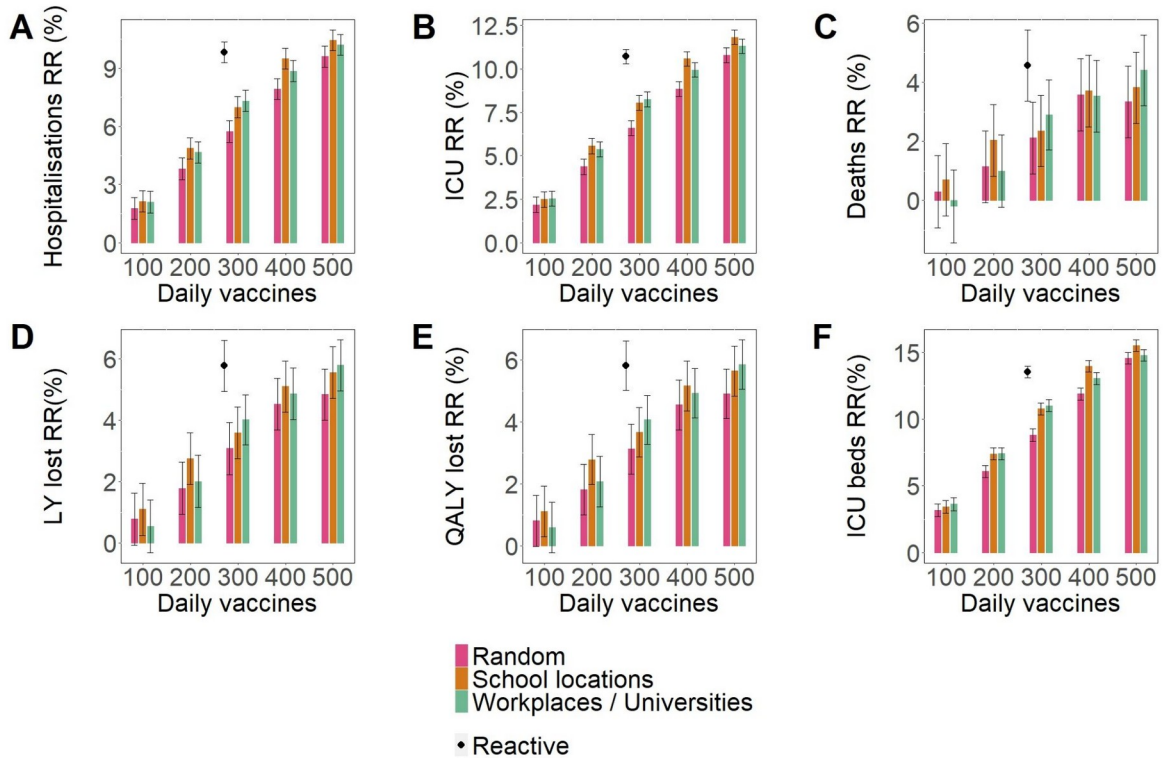
1042 Los: Length of stay. Sd = Standard deviation.

1043

1044 Figure S5 shows the relative reductions in the number of hospitalisations, deaths, ICU entries,
1045 life-year lost, quality-adjusted life-year lost and ICU bed occupancy at the peak, comparing
1046 each vaccination scenario with the reference scenario - i.e. vaccination only at the start. We
1047 consider here the high incidence and intermediate vaccine coverage scenario, analogously to
1048 Figure 2 D, E of the main paper. The six indicators show a behaviour similar to incidence.

1049 Overall reduction values are smaller. This is expected, since a large proportion of elderly are
 1050 already vaccinated at the start, and the compared vaccination strategies target a population
 1051 that is less at risk of severe infection. Still all indicators show the same qualitative behaviour,
 1052 with reactive vaccination outperforming the non-reactive vaccination strategies at equal
 1053 number of first-dose vaccination.

1054



1055

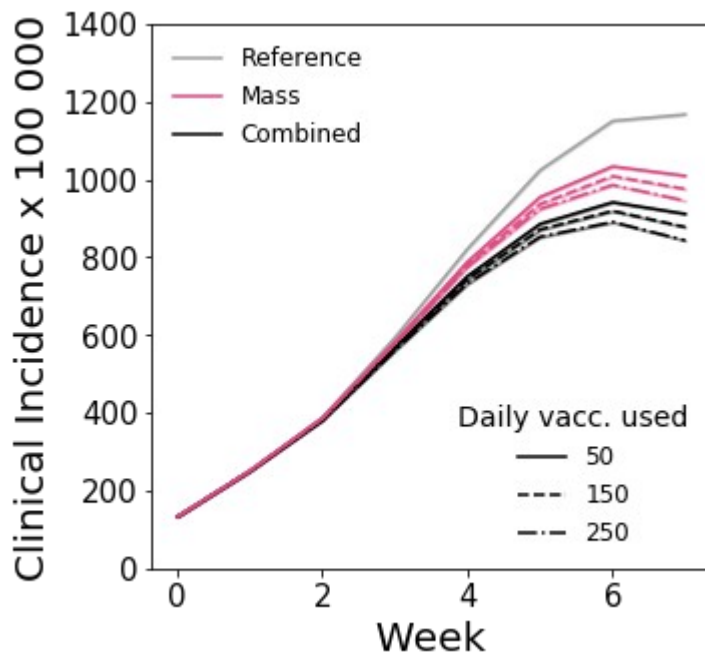
1056 **Figure S6. A, B, C, D, E** Relative reduction (RR) in the cumulative incidence of hospitalisations, intensive care unit
 1057 (ICU) entries, deaths, life years (LY) lost and quality-adjusted life years (QALY) lost over the first two months for all
 1058 strategies as a function of the vaccination pace. **F** Relative reduction (RR) in occupied ICU beds at the peak over
 1059 the first two months for all strategies as a function of the average daily number of first-dose vaccinations for the
 1060 intermediate vaccination coverage scenario. Values are means over 2000 stochastic simulations. Error bars are
 1061 derived from the standard errors of the AR. Parameters are the same as in Figure 2 D, E of the main paper.

1062

1063 **Combined reactive and mass vaccination for managing sustained**
 1064 **COVID-19 spread:**

1065 **Additional results**

1066 In Figure S7 we show the incidence curve corresponding to the scenarios analysed in Figure
 1067 3 A of the main paper. Mass and combined vaccination with the five different vaccination
 1068 paces are compared.



1069

1070 **Figure S7.** Incidence of clinical cases for mass and combined vaccination strategies for three different vaccination
 1071 paces. Scenarios are the same as the ones plotted in Figure 3 A. We assumed the following parameters: initial
 1072 incidence of clinical cases 160 per 100 000 inhabitants; $R=1.6$; Initial immunity 32%; vaccinated at the beginning
 1073 90% and 40% for 60+ and <60, respectively; 10% of individuals are doing teleworking and 5% of community
 1074 contacts are removed. Values are means over 2000 stochastic simulations. Shaded areas indicate the standard
 1075 errors - very low for this set of parameters.

1076

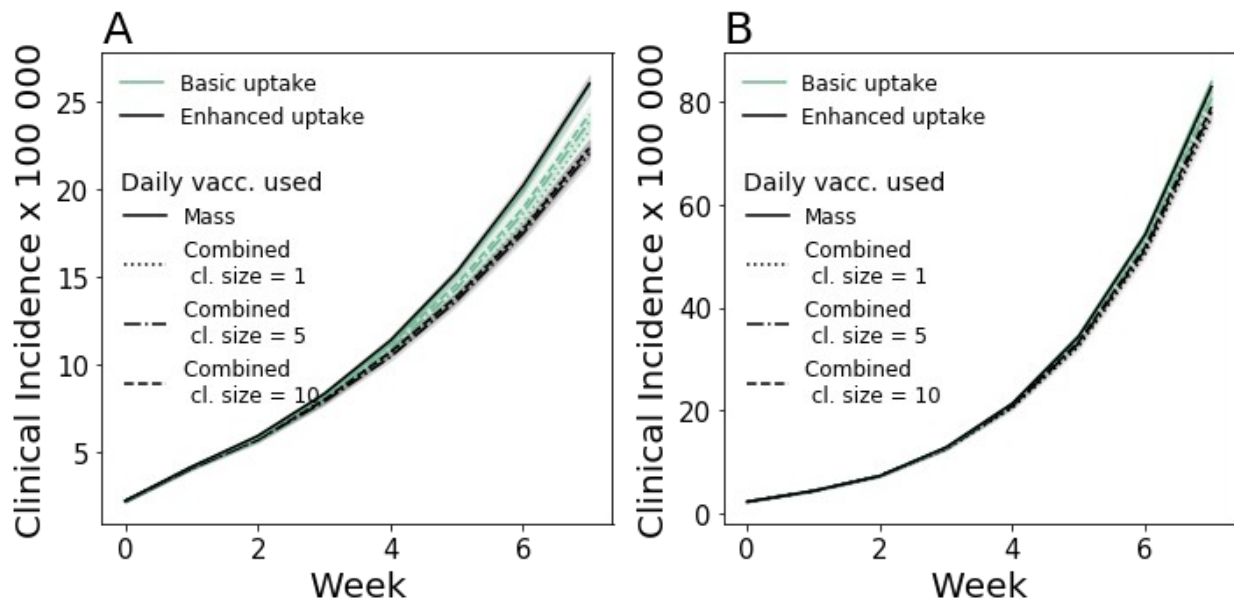
1077

1078 **Combined reactive and mass vaccination for managing a COVID-19**
 1079 **flare-up**

1080 **Additional results**

1081 In Figure S8 we show the incidence curve corresponding to the scenarios analysed in Figure
 1082 4 of the main paper. Mass and combined vaccination with the different vaccination scenarios
 1083 considered are compared.

1084



1085

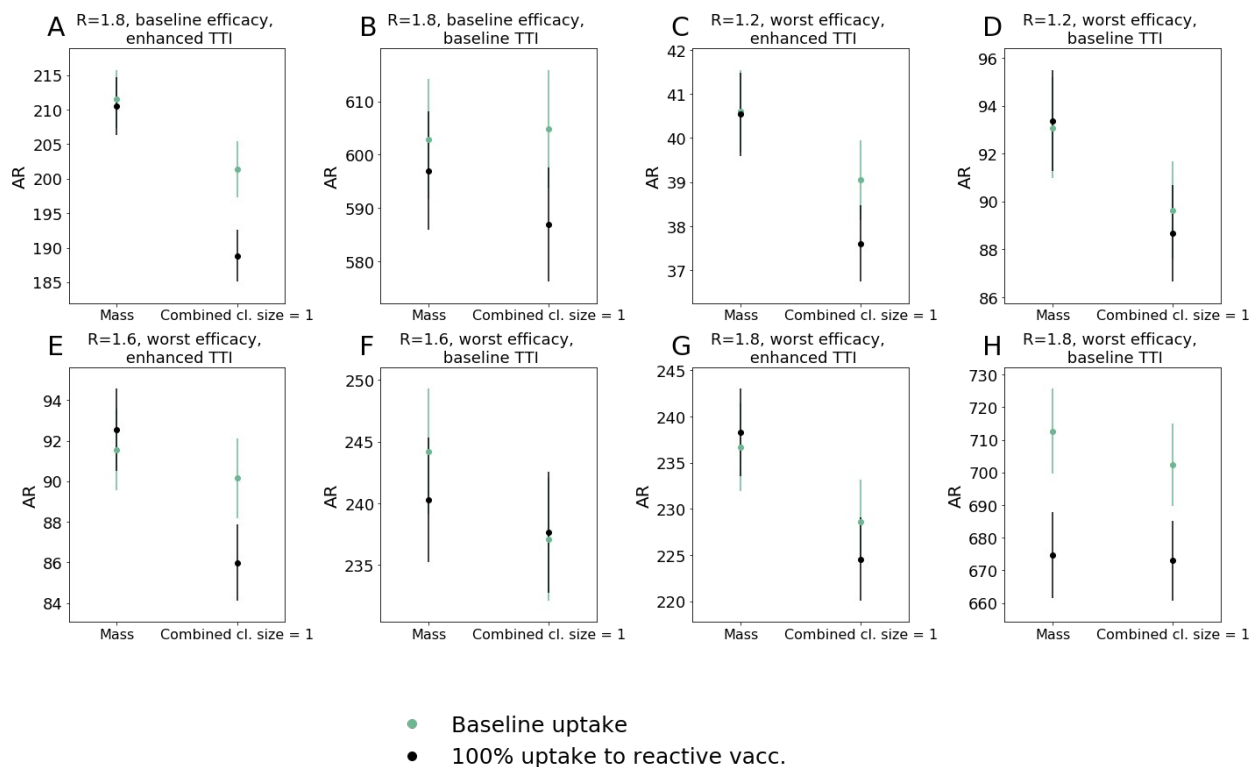
1086 **Figure S8.** Incidence of clinical cases for mass and combined vaccination strategies for the scenarios analysed in
 1087 Figure 4 of the main paper. **A** scenario with enhanced TTI. **B** scenario with baseline TTI. In all panels we
 1088 assumed the following parameters: $R=1.6$; Initial immunity 32%; 90% for 60+ year old and 40% for <60 years old
 1089 already vaccinated at the beginning; 10% of individuals are doing teleworking and 5% of community contacts are
 1090 removed. Values are means over 8000 stochastic simulations. Shaded areas indicate the standard errors.

1091

1092 **Sensitivity analysis**

1093 In Figure S9 we analyse the impact of combined and mass vaccination in a flare up scenario
 1094 similarly to Figure 4, by varying the hypotheses on virus transmissibility and vaccine escape.
 1095 Specifically we consider values of the reproductive ratio from 1.2 to 1.8, and both worst and
 1096 baseline vaccine effectiveness level - the worst vaccine effectiveness level is the same as in
 1097 Figures 2 I of the main paper. Analogously to Figure 4 we compare the attack rate for
 1098 combined and mass vaccination, assuming both baseline and enhanced TTI and both
 1099 baseline and 100% vaccine uptake in the context of reactive vaccination. We consider only
 1100 the case in which reactive vaccination starts after the detection of the first case. For each set
 1101 of parameters, scenarios with enhanced TTI and 100% uptake are associated with smaller
 1102 attack rates and larger difference between mass and combined than the corresponding
 1103 scenarios with baseline TTI and baseline uptake.

1104

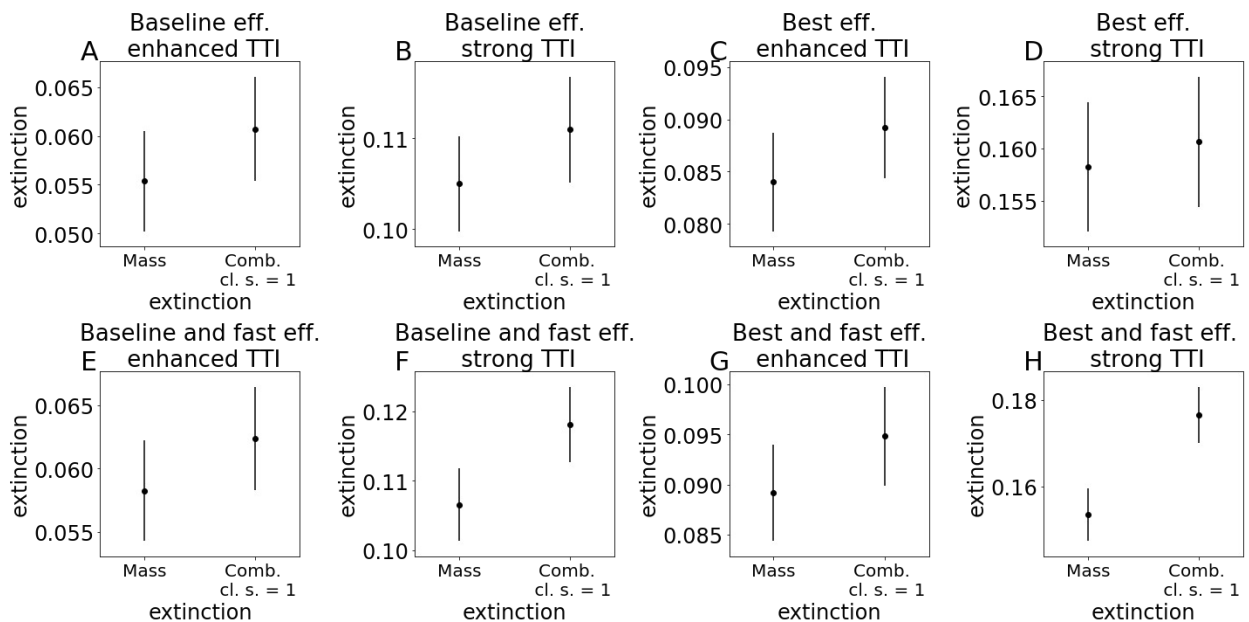


1105
 1106 **Figure S9.** Average attack rate per 100000 inhabitants after two months for the flare up case under different
 1107 hypotheses: **A, B**, $R = 1.8$ with baseline vaccine effectiveness; **C-H** worst vaccine effectiveness with $R = 1.2$ (C,D),
 1108 $R = 1.6$ (E,F) and $R = 1.8$ (G,H). The worst vaccine effectiveness scenario is defined as in figure 2 I, i.e.
 1109 $VE_{S,1}=30\%$, $VE_{SP,1}=35\%$, $VE_{S,2}=53\%$ and $VE_{SP,2}=60\%$. We compare enhanced and baseline
 1110 TTI - A, C, E, G and B, D, F, H, respectively -, as well as baseline and 100% vaccine uptake. In all panels,
 1111 parameters are the same as in Figure 4: initial immunity 32%; 90% for 60+ year old and 40% for <60 years old
 1112 already vaccinated at the beginning; 10% of individuals are doing teleworking and 5% of community contacts are
 1113 removed. Values are means over 8000 stochastic realisations. Error bars are the standard error.

1114

1115 We then investigate the impact of combined and mass vaccination on the extinction of the
 1116 flare-up. In Figure 10 A we plot the probability of extinction for the scenario considered in
 1117 Figure 4 A of the main paper (enhanced TTI and 100% vaccine uptake). We find that the
 1118 probability of extinction is $\sim 5\%$, and the difference between mass and combined is $\sim 0.5\%$.
 1119 The probability of extinction progressively increases under more optimistic hypotheses:
 1120 increase in case detection from 70% and 30% (enhanced TTI) to 100% and 50% (strong TTI)
 1121 for clinical and subclinical cases, respectively; increase in vaccine effectiveness to the best
 1122 case scenario considered in Figure 2 I; rapid mounting of the vaccine effect, with partial
 1123 immunity against infection already present one week after inoculation. In the best-case
 1124 scenario plotted in panel H, the probability of extinction reaches ~ 0.15 and ~ 0.18 for mass
 1125 and combined vaccination, respectively.

1126



1127

1128 **Figure S10.** Probability of extinction for an outbreak of three initial cases for mass vs. combined vaccination,
 1129 compared at an equal number of doses. Three sets of parameters are investigated. 1) Baseline vaccine
 1130 effectiveness (**A,B,E,F**) vs best effectiveness, i.e. $V E_{S,1}=65\%$, $V E_{SP,1}=75\%$, $V E_{S,2}=80\%$ and
 1131 $V E_{SP,2}=95\%$, (**C,D,G,H**); 2) enhanced TTI (**A,C,E,G**) vs. strong TTI with $p_{d,c}=1$ and $p_{d,sc}=0.5$ (**B,D,F,H**). 3)
 1132 2 weeks (baseline) for vaccines to reach partial effectiveness (**A,B,C,D**) vs 1 week (**E,F,G,H**). In all panels,
 1133 parameters are the same as in Figure 4: initial immunity 32%; 90% for 60+ year old and 40% for <60 years old
 1134 already vaccinated at the beginning; 10% of individuals are doing teleworking and 5% of community contacts are
 1135 removed. Values are means over 15000 stochastic realisations. Error bars are the standard error.

1136

1137 References

- 1138 1. López, J. A. M. *et al.* Anatomy of digital contact tracing: role of age, transmission setting,
 1139 adoption and case detection. *medRxiv* 2020.07.22.20158352 (2020)
 1140 doi:10.1101/2020.07.22.20158352.
- 1141 2. Kang, M. *et al.* *Transmission dynamics and epidemiological characteristics of Delta variant*
 1142 *infections in China*. 2021.08.12.21261991
 1143 <https://www.medrxiv.org/content/10.1101/2021.08.12.21261991v1> (2021)
 1144 doi:10.1101/2021.08.12.21261991.
- 1145 3. Lauer, S. A. *et al.* The Incubation Period of Coronavirus Disease 2019 (COVID-19) From
 1146 Publicly Reported Confirmed Cases: Estimation and Application. *Ann Intern Med* **172**,
 1147 577–582 (2020).
- 1148 4. Xin, H. *et al.* The Incubation Period Distribution of Coronavirus Disease 2019: A

- 1149 Systematic Review and Meta-analysis. *Clinical Infectious Diseases* (2021) doi:10.1093/cid/
1150 ciab501.
- 1151 5. He, X. *et al.* Temporal dynamics in viral shedding and transmissibility of COVID-19. *Nature*
1152 *Medicine* 1–4 (2020) doi:10.1038/s41591-020-0869-5.
- 1153 6. Di Domenico, L., Pullano, G., Sabbatini, C. E., Boëlle, P.-Y. & Colizza, V. Impact of
1154 lockdown on COVID-19 epidemic in Île-de-France and possible exit strategies. *BMC*
1155 *Medicine* **18**, 240 (2020).
- 1156 7. Higdon, M. M. *et al.* A systematic review of COVID-19 vaccine efficacy and effectiveness
1157 against SARS-CoV-2 infection and disease. 2021.09.17.21263549
1158 <https://www.medrxiv.org/content/10.1101/2021.09.17.21263549v1> (2021)
1159 doi:10.1101/2021.09.17.21263549.
- 1160 8. Polack, F. P. *et al.* Safety and Efficacy of the BNT162b2 mRNA Covid-19 Vaccine. *New*
1161 *England Journal of Medicine* **383**, 2603–2615 (2020).
- 1162 9. Kissler, S. M. *et al.* Viral dynamics of SARS-CoV-2 variants in vaccinated and
1163 unvaccinated individuals. 2021.02.16.21251535
1164 <https://www.medrxiv.org/content/10.1101/2021.02.16.21251535v3> (2021)
1165 doi:10.1101/2021.02.16.21251535.
- 1166 10. SPF. COVID-19 : point épidémiologique du 6 mai 2021.
1167 [https://www.santepubliquefrance.fr/maladies-et-traumatismes/maladies-et-infections-](https://www.santepubliquefrance.fr/maladies-et-traumatismes/maladies-et-infections-respiratoires/infection-a-coronavirus/documents/bulletin-national/covid-19-point-epidemiologique-du-6-mai-2021)
1168 [respiratoires/infection-a-coronavirus/documents/bulletin-national/covid-19-point-](https://www.santepubliquefrance.fr/maladies-et-traumatismes/maladies-et-infections-respiratoires/infection-a-coronavirus/documents/bulletin-national/covid-19-point-epidemiologique-du-6-mai-2021)
1169 [epidemiologique-du-6-mai-2021.](https://www.santepubliquefrance.fr/maladies-et-traumatismes/maladies-et-infections-respiratoires/infection-a-coronavirus/documents/bulletin-national/covid-19-point-epidemiologique-du-6-mai-2021)
- 1170 11. Smith, L. E. *et al.* Adherence to the test, trace and isolate system: results from a time
1171 series of 21 nationally representative surveys in the UK (the COVID-19 Rapid Survey of
1172 Adherence to Interventions and Responses [CORSAIR] study). *medRxiv* (2020)
1173 doi:10.1101/2020.09.15.20191957.
- 1174 12. Info Coronavirus COVID-19 - Tester - Alerter - Protéger. *Gouvernement.fr*
1175 [https://www.gouvernement.fr/info-coronavirus/tests-et-depistage.](https://www.gouvernement.fr/info-coronavirus/tests-et-depistage)
- 1176 13. CoviPrev : une enquête pour suivre l'évolution des comportements et de la santé
1177 mentale pendant l'épidémie de COVID-19. <https://www.santepubliquefrance.fr/etudes-et->

- 1178 enquetes/coviprev-une-enquête-pour-suivre-l'évolution-des-comportements-et-de-la-
1179 sante-mentale-pendant-l-epidemie-de-covid-19.
- 1180 14. Nasreen, S. *et al.* Effectiveness of mRNA and ChAdOx1 COVID-19 vaccines against
1181 symptomatic SARS-CoV-2 infection and severe outcomes with variants of concern in
1182 Ontario. 2021.06.28.21259420
1183 <https://www.medrxiv.org/content/10.1101/2021.06.28.21259420v3> (2021)
1184 doi:10.1101/2021.06.28.21259420.
- 1185 15. Tang, P. *et al.* BNT162b2 and mRNA-1273 COVID-19 vaccine effectiveness against
1186 the SARS-CoV-2 Delta variant in Qatar. *Nat Med* 1–8 (2021) doi:10.1038/s41591-021-
1187 01583-4.
- 1188 16. Kiem, C. T. *et al.* Short and medium-term challenges for COVID-19 vaccination: from
1189 prioritisation to the relaxation of measures. (2021).
- 1190 17. Lapidus, N. *et al.* Do not neglect SARS-CoV-2 hospitalization and fatality risks in the
1191 middle-aged adult population. *Infectious Diseases Now* **51**, 380–382 (2021).
- 1192 18. Lefrancq, N. *et al.* Evolution of outcomes for patients hospitalised during the first 9
1193 months of the SARS-CoV-2 pandemic in France: A retrospective national surveillance data
1194 analysis. *The Lancet Regional Health – Europe* **5**, (2021).
- 1195 19. Davies, N. G. *et al.* Age-dependent effects in the transmission and control of COVID-
1196 19 epidemics. *Nature Medicine* 1–7 (2020) doi:10.1038/s41591-020-0962-9.
- 1197 20. Sheikh, A., McMenamin, J., Taylor, B. & Robertson, C. SARS-CoV-2 Delta VOC in
1198 Scotland: demographics, risk of hospital admission, and vaccine effectiveness. *Lancet*
1199 **397**, 2461–2462 (2021).
- 1200 21. Bager, P. and Wohlfahrt, J. and Rasmussen, M. and Albertsen, M and Grove Krause,
1201 T. Hospitalisation associated with SARS-CoV-2 delta variant in Denmark. *Lancet Infect Dis*
1202 (2021).
- 1203 22. Salje, H. *et al.* Estimating the burden of SARS-CoV-2 in France. *Science* (2020)
1204 doi:10.1126/science.abc3517.
- 1205 23. Tables de mortalité par sexe, âge et niveau de vie – Tables de mortalité par niveau
1206 de vie | Insee. <https://www.insee.fr/fr/statistiques/3311422?sommaire=3311425>.

1207 24. Chevalier, J. & de Pouvourville, G. Valuing EQ-5D using time trade-off in France. *Eur*
1208 *J Health Econ* **14**, 57–66 (2013).

1209