

Frontal lobe fALFF measured from resting-state fMRI at baseline predicts acute treatment response in first episode psychosis

Todd Lencz^{1,2,3}, Ashley Moyett², Miklos Argyelan^{1,2,3}, Anita D. Barber^{2,3}, John Cholewa², Michael L. Birnbaum^{1,2,3}, Juan A. Gallego^{1,2,3}, Majnu John^{2,3,4}, Philip R. Szeszko^{5,6}, Delbert G. Robinson^{1,2,3}, and Anil K. Malhotra^{1,2,3}

¹ Department of Psychiatry, Zucker School of Medicine at Hofstra/Northwell, Hempstead, New York 11550

² Department of Psychiatry, Division of Research, The Zucker Hillside Hospital Division of Northwell Health, Glen Oaks, NY, 11004

³ Institute for Behavioral Science, The Feinstein Institutes for Medical Research, Manhasset, NY, 11030

⁴ Department of Mathematics, Hofstra University, Hempstead, NY, 11549

⁵ James J. Peters VA Medical Center, Bronx, NY, 10468

⁶ Department of Psychiatry, Icahn School of Medicine at Mount Sinai, New York, NY, 10029

Abstract

While antipsychotic medications have been utilized for decades, many patients experiencing psychosis do not demonstrate a satisfactory positive symptom response, even in the first episode of illness. Resting state functional magnetic resonance imaging (rs-fMRI) has increasingly been studied as a potential biomarker of antipsychotic treatment response, but studies to date remain limited in terms of sample size and brain regions examined. The present study examined fractional amplitude of low frequency fluctuations (fALFF) derived from rs-fMRI to search the whole brain, in a hypothesis-free manner, for regions that might predict response to 12 weeks of treatments with standard antipsychotic medications (risperidone or aripiprazole). To our knowledge, the present study represents the largest first episode psychosis treatment sample studied with rs-fMRI to date (N=126). At baseline, patients who would later meet strict criteria for clinical response demonstrated significantly greater baseline fALFF in bilateral orbitofrontal cortex compared to non-responders. In a subset of 62 patients who were scanned a second time at the end of treatment, responders and non-responders demonstrated significant increases in fALFF in differing brain regions. Specifically, responders demonstrated significant increases in fALFF, from baseline to follow-up, in bilateral dorsal prefrontal cortex; prefrontal changes were not observed in non-responders or in healthy individuals (n=45) scanned at two time points. Thus, spontaneous activity in orbitofrontal cortex may serve as a prognostic biomarker of antipsychotic treatment, while spontaneous activity in the dorsal prefrontal cortex may serve as a critical target of effective medication.

Antipsychotic medications with activity at the dopamine D2 receptor remain the primary pharmacologic treatment for patients with psychotic disorders such as schizophrenia, despite highly variable response¹. About one-third of patients with schizophrenia are ultimately resistant to treatment with antipsychotic medications², and more than half of these lack even minimal response (20% reduction of positive symptoms) in the first episode of illness^{3,4}. Moreover, a large number of patients demonstrate only partial response to antipsychotic treatment⁵, and a substantial minority of first episode patients demonstrate robust response (defined either as 50% reduction in positive symptoms⁴ or as absence of frank psychosis^{6,7}). The first episode of illness is especially important clinically for at least three reasons: 1) it is the phase of illness associated with the greatest risk of suicide^{8,9}; 2) it may be the best opportunity to mitigate long-term illness trajectory¹⁰; and 3) the onset period of late adolescence/early adulthood represents a critical period for attaining functional milestones in the transition to independence¹¹. Thus, identification of individuals at risk for poor response is an important clinical goal, yet prognostic biomarkers are lacking¹².

Furthermore, from a research perspective, identification of biomarkers for poor response to antipsychotics may point towards novel treatment targets and mechanisms not addressed by existing pharmacologic agents^{12,13}. Biomarker studies conducted in first episode patients may be advantageous, compared to studies in more chronic populations, due to the ability to obtain baseline measurements unconfounded by lengthy exposure to treatment and ongoing illness processes¹⁴ and the availability of the full range of clinical outcomes, as compared to the abundance of partial and poor responders in samples of convenience⁴.

Resting-state functional magnetic resonance imaging (rs-fMRI) has become an increasingly utilized tool in the quest for treatment biomarkers in schizophrenia¹⁵. Compared to task-based fMRI, rs-fMRI is more easily performed in acutely ill patients in their first psychotic episode, and may provide information congruous to that obtained with task-based fMRI¹⁶. Importantly, the large majority of the energy expenditure of the brain is accounted for by spontaneous fluctuations, whereas task-related activations represent <5% of this total¹⁷.

Although many rs-fMRI studies of antipsychotic response have been limited to the cross-sectional comparison of treatment-responsive and non-responsive patients to each other and/or to controls¹⁵, Tables 1 and 2 display key parameters of all *prospective* rs-fMRI studies in first-episode psychosis to date. Table 1 includes all studies in which baseline rs-fMRI measures were examined in relation to

subsequent treatment response over a period of weeks or months (we call these “baseline-biomarker” studies). Table 2 includes all studies in which patients were scanned twice, at baseline and after a period of treatment; in these studies, the *change* in rs-fMRI measures was examined in relation to change in symptoms (i.e., response) over the same time interval (we call these “change-biomarker” or “ Δ/Δ ” studies). While baseline-biomarker studies and change-biomarker studies are methodologically similar, they hold conceptually different roles in advancing our understanding of antipsychotic efficacy: the former hold the possibility of providing prognostic indicators for precision medicine, while the latter can identify neurocircuits that serve as targets of effective medication¹⁸. In general, longitudinal sample sizes for both sets of studies were small (median N=36 in Table 1, and median N=25.5 in Table 2). Notably, the two studies with relatively large sample sizes in Table 1 both included a mix of first-episode and multi-episode patients in their longitudinal studies^{19,20}.

Most of the baseline-biomarker studies listed in Table 1 limit the investigation to functional connectivity of pre-defined regions of interest (ROIs). For example, we²¹ and others^{19,22–26} have focused on the corpus striatum, given the enrichment of this structure in dopamine D2 receptors, the target of all effective antipsychotics^{27,28}. Only two baseline-biomarker studies, both reported from Xijing Hospital (Xi’an, China), examined the whole brain in a hypothesis-free manner. Of these, one²⁹ was underpowered (n=36) and reported null results; the other²⁰ included a large sub-cohort of patients with chronic illness mixed together with first-episode patients, treated with a wide range of different antipsychotic medications (including clozapine), with outcome measured after variable treatment durations.

While most of the studies in Tables 1 and 2 examined resting-state functional connectivity (FC) *across* brain regions, intrinsic resting activity *within* brain regions has been less well studied as a potential biomarker. Specifically, the fractional amplitude of low frequency fluctuations (fALFF³⁰), is a measure thought to capture spontaneous neural activity, and has been shown to correlate with local brain glucose metabolism^{31–34}. Importantly, regions with greater fALFF also demonstrate greater degree centrality^{35,36}, a measure of connectedness derived from graph theory, suggesting that fALFF underpins (to some extent) functional connectivity of brain networks. However, relative to FC, fALFF has the advantage of being relatively less susceptible to movement artifact³⁷, and fALFF has been shown to be less impacted by physiologic noise compared to an older measure of local activity, ALFF^{30,38}. Moreover, fALFF has been demonstrated to be stable over the course of an fMRI session³⁹, as well as reliable over time (measured in hours, weeks, or months)^{38,40}, a necessary attribute for a potential biomarker⁴¹.

One very early study⁴² of ALFF as a change-biomarker suggested that treatment-related increases in ALFF across several cortical regions (prefrontal, dorsal parietal, and superior temporal), as well as the caudate, were correlated with symptom improvement over 6 weeks. A subsequent study using fALFF in the context of an 8-week risperidone trial provided evidence for a striatal, but not cortical, change-biomarker⁴³. Two long-term (1-year follow-up) studies using ALFF or fALFF failed to find any significant change-biomarkers, although these studies did not provide data on the acute course of the initial antipsychotic trial.

The goal of the present study was to test whether measurement of fALFF can provide a baseline-biomarker and/or change-biomarker of acute (12-week) positive symptom response to antipsychotic medication in patients experiencing a first episode of psychosis. To allow hypothesis-free biomarker discovery, we utilized voxelwise measures of fALFF across the whole brain. To our knowledge, our cohort (n=126 patients with baseline and clinical follow-up, of whom 62 also had follow-up scans at 12 weeks) represents the largest prospective rs-fMRI study in first-episode psychosis to date.

Table 1.

First Author	Institution	Journal	Year	N	All FE?	Predictor	ROI	Method	Meds	Duration
Sugai Liang ⁴⁴	Sichuan University	NPP	2021	49	Yes	null	triple-network	FC	variable	6 weeks
Akhil Kottaram ⁴⁵	Melbourne, Aus	HBM	2020	30	No	DMN	N/A	FC	NR	12 months
Ang Li ¹⁹	CAS Beijing	Nat Med	2020	95	No	Striatal	Striatum	fALFF/ReHo + FC	variable	6 weeks
Gosa Tarcijonas ²²	UPMC	Schiz Bull	2020	43	Yes	GP/insula/ACC	Globus Pallidus	FC	variable	6 months
Shaoqiang Han ²³	Chengdu	Schiz Res	2020	38	Yes	Striatal-Saliency	Striatum	FC	RISP	8 weeks
Bo Cao ²⁴	Beijing HLG	Mol Psy	2020	38	Yes	STG	STG	FC/mutual info	RISP	10 weeks
Daniel Bergé ⁴⁶	UC Davis	Psych Med	2020	43	Recent Onset	Null	thalamus	FC	variable	12 months
Liu-Xian Wang ²⁹	Xijing Hospital	Schiz Res	2019	36	Yes	Null	N/A	graph theory	variable	16 weeks
Long-Biao Cui ²⁰	Xijing Hospital	BrainBehav	2019	123	No	Parietal	N/A	ALFF	variable	Variable
Huabing Li ²⁵	Changsa, Hunan	Ebiomed	2019	76	Yes	Putamen	Striatum	fALFF	OLZ	8 weeks
Renrong Wu ²⁶	Changsa, Hunan	Frontiers	2019	32	Yes	Putamen	Striatum	fALFF	OLZ	8 weeks
Yiwen Zhang ⁴⁷	Shanghai	BP:CNNI	2019	23	Yes	SM subnetworks	Sensorimotor Cortex	FC	variable	8 weeks
Esther Blessing ⁴⁸	NKI/Shanghai	Schiz Bull	2019	27	Yes	Anterior Hc	Hippocampus	FC	variable	8 weeks
Deepak Sarpa ²¹	ZHH	AJP	2016	41	Yes	Striatal	Striatum	FC	RISP/ARI	12 weeks
Nina Kraguljac ⁴⁹	UAB	Schiz Bull	2016	28	No	Hc/ACC/caudate	Hippocampus	FC	RISP	6 weeks
Alan Anticevic ⁵⁰	Chengdu	J Neurosci	2015	25	Yes	PFC hyper-conn	PFC	FC	variable	12 months
Nina Kraguljac ⁵¹	UAB	NeuroImClin	2015	28	No	DAN	4 Yeo networks	FC	RISP	6 weeks
Jennifer Hadley ⁵²	UAB	NPP	2014	21	No	VTA/dACC	VTA	FC	RISP	6 weeks

NKI=Nathan Kline Institute; ZHH=Zucker Hillside Hospital; UAB=University of Alabama at Birmingham; NPP=Neuropsychopharmacology; HBM=Human Brain Mapping; BP:CNNI=Biological Psychiatry: Cognitive Neuroscience and Neuroimaging; AJP=American Journal of Psychiatry; DMN=Default Mode Network; GP=Globus Pallidus; SM=sensorimotor; Hc=hippocampus; PFC=Prefrontal Cortex; DAN=Dorsal Attention Network; VTA=Ventral Tegmental Area; dACC=dorsal Anterior Cingulate Cortex; FC=functional Connectivity; ReHo=Regional Homogeneity; RISP=risperidone; OLZ=olanzapine; ARI=aripiprazole

Table 2.

First Author	Institution	Journal	Year	N	All FE?	Overall change over time*	Δ/Δ^*	Method	Meds	Duration
Shi Yu Chan ⁵³	McLean Hosp	Schiz Bull	2021	36	Early Stage	null	mPFC-PCC	FC	variable	12 months
Xujun Duan ⁵⁴	2nd Xiangya Hosp	Schiz Res	2020	33	Yes	incr. PCC-thal, PCC- left lingual	incr. PCC-L lingual	FC	RISP	8 weeks
Xujun Duan ⁵⁵	2nd Xiangya Hosp	Schiz Bull	2020	34	Yes	various incr. and decr.	incr. dFC variance L dAI-L SMA	dynamic FC	RISP	8 weeks
Berge ⁴⁶	UC Davis	Psych Med	2020	43	Rec Onset	incr. thal-R SFG/MFG	null	FC	variable	12 months
Ganella ⁴⁵	Melbourne, Aus	ANZJP	2018	14	Yes	null	null	graph theory	unreported	12 months
Mingli Li ⁵⁶	Sichuan University	Eur Arch Psy ClinNeurosci	2018	47	Yes	incr. fALFF precuneus, IPL; decr. EC L STG/Occ	null	fALFF + EC	variable	12 months
Lottman ⁵⁷	UAB	Frontiers	2017	22	No	normalize dwell times	null	dynamic FC	RISP	6 weeks
Yingchan Wang ⁵⁸	Shanghai Sichuan University	Neuropsych Dis Treatmnt	2017	26	Yes	inc. FC R STG, R MFG, L SFG; decr. FC R precuneus, R CBLL, L insula	null	FC	variable	6-8 weeks
Fei Li ⁵⁹	University	Radiology	2016	20	Yes	inc. ALFF R IPL, R OFC; inc. FC B IPL; reduced ALFF R Occipital	null	ALFF	variable	12 months
Mao-Lin Hu ⁴³	Changsa, Hunan	Sci Reports	2016	42	Yes	caudate/putamen	putamen	fALFF/ReHo	RISP	8 weeks
Kraguljac ⁴⁹	UAB	Schiz Bull	2016	22	No	Hippocampus/ACC/caudate	Hippocampus	FC	RISP	6 weeks
Hadley ⁵²	UAB	npj Schiz Neuroimage:	2016	22	No	N/A	small world ↓	graph theory	RISP	6 weeks
Kraguljac ⁵¹	UAB	Clinical	2016	22	No	reduced DAN	N/A	FC	RISP	6 weeks
Sarpal ⁶⁰	ZHH	JAMA Psych	2015	24	Yes	R VSS- L thalamus	cortico-striatal	FC	RISP/ARI	12 weeks
Anticevic ⁵⁰	Chengdu	J Neurosci	2015	25	Yes	↓PFC hyper-connectivity	↓PFC hyper-conn R MFG, R IPL, L SPL, B MFC, R IFG, L SFG,	FC	variable	12 months
Lui ⁴²	Sichuan University	AGP	2010	34	Yes	R MFG, R IPL, L SPL, B MFC, R IFG, L SFG, L STG, R caudate increase	L STG, R caudate increase	ALFF	variable	6 weeks

Overall change over time =regions of brain in which rs-fMRI data changes in patients from baseline to post-treatment followup, regardless of symptom change; Δ/Δ^ = regions of brain in which rs-fMRI data changes in patients from baseline to post-treatment followup as a function of change in symptoms

ZHH=Zucker Hillside Hospital; UAB=University of Alabama at Birmingham; AGP=Archives of General Psychiatry; R=Right; L=Left; B=Bilateral; PCC=Posterior Cingulate Cortex; SFG=Superior Frontal Gyrus; MFG=Middle Frontal Gyrus; IPL=Inferior Parietal Lobule ; STG=superior temporal gyrus; CBLL=cerebellum; OFC=orbitofrontal cortex; ACC=Anterior Cingulate Cortex; DAN=Dorsal Attention Network; VSS=Ventral Striatum; IFG=Inferior Frontal Gyrus; SPL=Superior Parietal Lobule; FC=functional Connectivity; ReHo=Regional Homogeneity; RISP=risperidone; ARI=aripiprazole

Methods

Subjects

Subjects included 126 patients (33.3% female, mean age=22.6, SD=5.7) with first episode psychotic disorders and minimal exposure to APs (median exposure = 5 days; all patients <2 years). All subjects underwent scanning while entering 12 weeks of prospective treatment with second-generation APs (risperidone or aripiprazole). Consistent with our prior studies^{6,7}, stringent treatment response criteria were applied for ratings obtained on weeks 1, 2, 3, 4, 6, 8, 10, and 12: response required 2 consecutive ratings of much or very much improved on the CGI, as well as a rating of ≤ 3 on psychosis-related items of the BPRS-A. By these criteria, 83 patients were classified as responders; these subjects did not differ from 43 non-responders on age, sex, scanner type (GE or Siemens), or movement during the scan (framewise displacement, FD), as displayed in Table 1. Of the 62 patients who completed a follow-up scan, 41 were responders and 21 were non-responders. In order to examine effects of time and re-scan independent of illness and treatment, we scanned 45 healthy comparison subjects (53.3% female, mean age=25.6, SD=4.5). All subjects provided written, informed consent under a protocol approved by the Institutional Review Board of the Feinstein Institutes for Medical Research at Northwell Health.

TABLE 1	Responders (N=83)	Non-Responders (N=43)	Statistical Test (p-value)
Sex (Male/Female)	26/57	16/27	$\chi^2(1)=0.44$ (p=0.55)
Scanner Type (GE/Siemens)	53/30	21/22	$\chi^2(1)=2.64$ (p=0.10)
Mean Age (SD)	22.49 (5.58)	22.89 (5.94)	$t_{124}=0.38$ (p=0.70)
Mean FD (SD)	0.142 (0.106)	0.156 (0.137)	$t_{68.48}=0.58$ (p=0.56) (Note: unequal variances)

Scan parameters

All fMRI exams were conducted on a 3T scanner (GE Signa HDx, n=77 at baseline, n=35 at follow-up); Siemens PRISMA, n=53 at baseline, n=27 at follow-up). For each patient, the follow-up scan was conducted on the same scanner as the baseline. On the Signa, the resting-state scan lasted 5 minutes, during which 150 EPI volumes were obtained (TR = 2000 ms, TE = 30 ms, matrix = 64*64, FOV = 240 mm; 40 contiguous 3mm oblique axial slices). On the PRISMA, two 7-minute 17-second resting-state runs

were obtained, one each with AP and PA phase encoding directions. Resting scans contained 594 whole-brain volumes, each with 72 contiguous axial/oblique slices in the AC-PC orientation (TR=720ms, TE=33.1ms, matrix = 104x90, FOV = 208mm, voxel = 2x2x2mm, multi-band acceleration factor=8).

Calculation of fALFF and statistical analysis

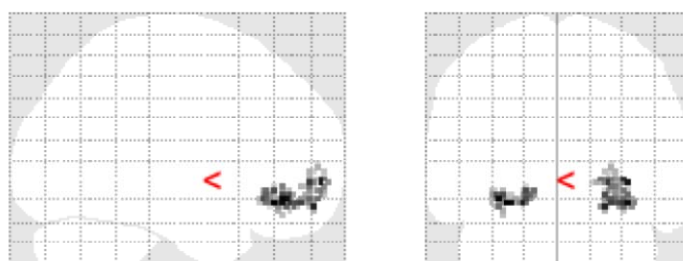
Raw resting state data were preprocessed with despiking, linear trend removal, spatial smoothing (6mm³ kernel FWHM), and grand mean scaling. Utilizing Fourier Transformation at every voxel, we calculated the power of BOLD signal in the low frequency range of 0.01–0.10 Hz and divided it by the power of BOLD signal across the entire frequency range (0–0.25 Hz) to calculate fALFF³⁰. Voxelwise fALFF was compared between responders and non-responders using t-tests implemented in SPM with age, sex, scanner, and movement (FD) as nuisance covariates, and applying a height threshold of $p < 0.005$ and FDR-corrected cluster size $p < .05$.

Results

Baseline-biomarker analysis.

Compared to non-responders, patients who would later meet strict criteria for clinical response demonstrated significantly greater baseline fALFF in bilateral orbitofrontal cortex (OFC, Figure 1). By contrast, no significant clusters were identified in which non-responders showed greater baseline fALFF compared to responders.

Figure 1



FDR (q)	Cluster size	Peak T	MNI		
			X	Y	Z
0.011	95	3.79	22	54	-18
0.002	131	4.16	-20	32	-14

Change-biomarker analysis.

Responders (n=41) demonstrated significant increases in fALFF, from baseline to follow-up, in bilateral dorsal prefrontal cortex (middle/superior frontal gyrus) and retrosplenial cortex (posterior cingulate/precuneus; Figure 2a). Non-responders, by contrast, demonstrated significant fALFF increases in right premotor cortex / supplementary motor region (Figure 2b). No regions demonstrated significant decreases in fALFF over time in either group.

Figure 2a -- Responders

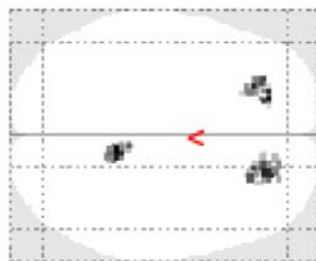
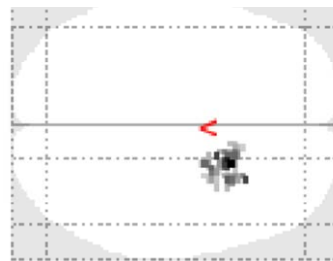


Figure 2b – Non-responders



Group	FDR (q)	Cluster size	Peak T	MNI		
				X	Y	Z
Resp	0.037	53	4.50	10	-42	22
Resp	0.002	75	4.24	-18	42	38
Resp	0.006	60	4.16	22	40	38
Non-resp	0.000	129	4.77	22	14	52

To determine if any of the changes observed in the patient groups were a function of normal test-retest variation, we examined change in fALFF in n=45 healthy comparison subjects scanned at two timepoints, 12 weeks apart. Seven brain regions demonstrated significant increases in fALFF from baseline to followup (encompassing bilateral sensorimotor cortex, bilateral lingual gyrus, left premotor cortex, left supplementary motor area, and right superior occipital cortex; see Figure 3). Notably, all of these regions were centered in posterior cortex (no peak or subpeak had y coordinate > 0), whereas both patient groups demonstrated fALFF increases in frontal regions only.

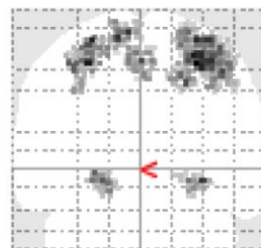
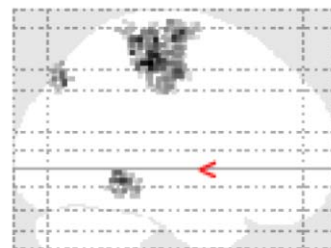


Figure 3

FDR (q)	Cluster size	Peak T	MNI		
			X	Y	Z
0.000	556	5.59	28	-28	52
0.000	198	5.18	-30	-32	52
0.000	107	4.85	-14	-16	66
0.000	66	4.78	30	-44	-8
0.000	115	4.59	-2	-22	54
0.001	50	4.49	22	-74	42
0.000	76	4.42	-22	-44	-8

Discussion

In the largest prospective study to date of resting state fMRI in first-episode psychosis, we report that activity in several prefrontal regions at rest may serve as treatment-relevant biomarkers. First, we observed that fALFF in bilateral orbitofrontal cortex at baseline may serve as a prognostic biomarker. Specifically, patients who later demonstrated robust positive symptom response to risperidone or aripiprazole had greater orbitofrontal fALFF at baseline, compared to patients who failed to respond in their initial 12-week trial of these antipsychotic agents. This result complements our previous finding that baseline striatal connectivity to multiple cortical regions (including OFC) may also have value as a baseline prognostic biomarker²¹. While our prior study, like most of the baseline-biomarker studies summarized in Table 1, employed functional connectivity analysis based on a hypothesis-driven striatal region-of-interest, the current study was not constrained by prior hypotheses. To the extent that fALFF indexes underlying neural activity³¹⁻³⁴, our results suggest that first episode patients with reduced OFC activity are less likely to respond to conventional dopamine D2 agents. While a variety of clinical and preclinical studies have implicated OFC dysfunction in schizophrenia^{16,61,62}, potentially indexing abnormal reward prediction⁶³ and/or reversal learning⁶⁴, the present study suggests that these abnormalities may especially be marked in treatment non-responsive patients. Further studies, in larger sample sizes, will be required to determine the potential sensitivity and specificity of OFC fALFF as a prognostic biomarker. It is also noteworthy that activity and connectivity of the OFC is especially sensitive to dopaminergic modulation⁶⁵, but similar effects may also be elicited by modulation of the metabotropic glutamate receptor^{66,67}, suggestive a possible target for future treatment development.

While fALFF in the ventral prefrontal cortex may serve as a baseline biomarker, results of the present study suggest that fALFF in dorsal prefrontal cortex may serve as a change biomarker. Increased fALFF in dorsal PFC over time was seen in subjects responding to treatment. These results replicate, in part, findings initially reported by Lui et al.⁴² which have since not been replicated by several small, uncontrolled studies^{43,56,59}. Moreover, these results complement our previous findings that increases in dorsal prefrontal connectivity to the striatum (specifically, the dorsal caudate) were correlated with symptom improvement in a partially overlapping cohort of first episode patients⁶⁰. While abnormalities of the dorsal prefrontal cortex have been a major focus of schizophrenia research for decades⁶⁸, its role in treatment response has only recently come into focus. Several task-based fMRI studies have suggested that normalization of hypoactivity in the dorsal prefrontal cortex may be a marker of antipsychotic efficacy⁶⁹, consistent with results of cross-sectional studies comparing treatment-resistant

to treatment-responsive patients with schizophrenia⁷⁰. A mechanistic understanding of dorsal prefrontal cortex suggests that tight regulation of calcium-cAMP signaling is required for optimal function, and that several pharmacologic approaches may be tested that can ameliorate calcium dysregulation⁷¹. Intriguingly, emerging evidence suggests that non-pharmacologic approaches to schizophrenia treatment such as repetitive transcranial magnetic stimulation (rTMS) and cognitive remediation therapy may also effectively modulate activity and connectivity in the dorsal prefrontal cortex⁷².

Additionally, we observed increased fALFF in the precuneus/posterior cingulate over the course of treatment in responders; this change was not observed in non-responders. This finding complements two recent studies reporting that increased connectivity of the posterior cingulate was associated with clinical response to antipsychotic treatment in the first episode of illness^{53,54}. This brain region is considered the hub of the default mode network, and is critical to the ability to shift between self-oriented processing and (external) task-oriented function mediated by dorsal prefrontal cortex^{73,74}. Collectively, our findings are consistent with a recently proposed model of schizophrenia⁶¹ that places the inability to shift between internal and external focus at the core of the disorder, and suggests novel pharmacologic and molecular approaches to ameliorating these deficits.

Declaration of Competing Interests

Dr. Robinson has been a consultant to Costello Medical Consulting, Innovative Science Solutions, Janssen, Lundbeck, Otsuka and US World Meds and has received research support from Otsuka. Dr. Malhotra has been a consultant to Genomind, InformedDNA and Janssen. Dr. Gallego has served as a consultant to Alkermes. No other authors report competing interests.

Acknowledgements

This work was supported by grants from the National Institutes of Health: R01 MH108654 (PI: Malhotra); P50 MH080713 (PI: Malhotra); and R21 MH101746 (PIs: Robinson and Szeszko).

References

1. Kahn RS, Sommer IE, Murray RM, et al. Schizophrenia. *Nat Rev Dis Primers*. 2015;1:15067. doi:10.1038/nrdp.2015.67

2. Potkin SG, Kane JM, Correll CU, et al. The neurobiology of treatment-resistant schizophrenia: paths to antipsychotic resistance and a roadmap for future research. *NPJ Schizophr*. 2020;6(1):1. doi:10.1038/s41537-019-0090-z
3. Demjaha A, Lappin JM, Stahl D, et al. Antipsychotic treatment resistance in first-episode psychosis: prevalence, subtypes and predictors. *Psychological Medicine*. 2017;47(11):1981-1989. doi:10.1017/S0033291717000435
4. Zhu Y, Li C, Huhn M, et al. How well do patients with a first episode of schizophrenia respond to antipsychotics: A systematic review and meta-analysis. *Eur Neuropsychopharmacol*. 2017;27(9):835-844. doi:10.1016/j.euroneuro.2017.06.011
5. Haddad PM, Correll CU. The acute efficacy of antipsychotics in schizophrenia: a review of recent meta-analyses. *Ther Adv Psychopharmacol*. 2018;8(11):303-318. doi:10.1177/2045125318781475
6. Robinson DG, Gallego JA, John M, et al. A Randomized Comparison of Aripiprazole and Risperidone for the Acute Treatment of First-Episode Schizophrenia and Related Disorders: 3-Month Outcomes. *Schizophr Bull*. 2015;41(6):1227-1236. doi:10.1093/schbul/sbv125
7. Robinson DG, Woerner MG, Napolitano B, et al. Randomized comparison of olanzapine versus risperidone for the treatment of first-episode schizophrenia: 4-month outcomes. *Am J Psychiatry*. 2006;163(12):2096-2102. doi:10.1176/ajp.2006.163.12.2096
8. Nordentoft M, Madsen T, Fedyszyn I. Suicidal behavior and mortality in first-episode psychosis. *J Nerv Ment Dis*. 2015;203(5):387-392. doi:10.1097/NMD.0000000000000296
9. Strålin P, Hetta J. Medication, hospitalizations and mortality in 5 years after first-episode psychosis in a Swedish nation-wide cohort. *Early Intervention in Psychiatry*. 2019;13(4):902-907. doi:10.1111/eip.12697
10. Buckley PF, Correll CU, Miller AL. First-episode psychosis: a window of opportunity for best practices. *CNS Spectr*. 2007;12(9 Suppl 15):1-12; discussion 13-14; quiz 15-16. doi:10.1017/s1092852900026213
11. Birchwood M, Todd P, Jackson C. Early intervention in psychosis. The critical period hypothesis. *Br J Psychiatry Suppl*. 1998;172(33):53-59.
12. Fond G, d'Albis M-A, Jamain S, et al. The promise of biological markers for treatment response in first-episode psychosis: a systematic review. *Schizophr Bull*. 2015;41(3):559-573. doi:10.1093/schbul/sbv002
13. Malhotra AK. Dissecting the Heterogeneity of Treatment Response in First-Episode Schizophrenia. *Schizophr Bull*. 2015;41(6):1224-1226. doi:10.1093/schbul/sbv117
14. Malhotra AK, Zhang J-P, Lencz T. Pharmacogenetics in psychiatry: translating research into clinical practice. *Mol Psychiatry*. 2012;17(8):760-769. doi:10.1038/mp.2011.146
15. Chan NK, Kim J, Shah P, et al. Resting-state functional connectivity in treatment response and resistance in schizophrenia: A systematic review. *Schizophrenia Research*. 2019;211:10-20. doi:10.1016/j.schres.2019.07.020

16. Mwansisya TE, Hu A, Li Y, et al. Task and resting-state fMRI studies in first-episode schizophrenia: A systematic review. *Schizophrenia Research*. 2017;189:9-18. doi:10.1016/j.schres.2017.02.026
17. Fox MD, Raichle ME. Spontaneous fluctuations in brain activity observed with functional magnetic resonance imaging. *Nature Reviews Neuroscience*. 2007;8(9):700-711. doi:10.1038/nrn2201
18. Sarpal DK, Lencz T, Malhotra AK. In Support of Neuroimaging Biomarkers of Treatment Response in First-Episode Schizophrenia. *Am J Psychiatry*. 2016;173(7):732-733. doi:10.1176/appi.ajp.2016.16030320
19. Li A, Zalesky A, Yue W, et al. A neuroimaging biomarker for striatal dysfunction in schizophrenia. *Nat Med*. 2020;26(4):558-565. doi:10.1038/s41591-020-0793-8
20. Cui L-B, Cai M, Wang X-R, et al. Prediction of early response to overall treatment for schizophrenia: A functional magnetic resonance imaging study. *Brain Behav*. 2019;9(2):e01211. doi:10.1002/brb3.1211
21. Sarpal DK, Argyelan M, Robinson DG, et al. Baseline Striatal Functional Connectivity as a Predictor of Response to Antipsychotic Drug Treatment. *Am J Psychiatry*. 2016;173(1):69-77. doi:10.1176/appi.ajp.2015.14121571
22. Tarcijonas G, Foran W, Haas GL, Luna B, Sarpal DK. Intrinsic Connectivity of the Globus Pallidus: An Uncharted Marker of Functional Prognosis in People With First-Episode Schizophrenia. *Schizophr Bull*. 2020;46(1):184-192. doi:10.1093/schbul/sbz034
23. Han S, Becker B, Duan X, et al. Distinct striatum pathways connected to salience network predict symptoms improvement and resilient functioning in schizophrenia following risperidone monotherapy. *Schizophrenia Research*. 2020;215:89-96. doi:10.1016/j.schres.2019.11.017
24. Cao B, Cho RY, Chen D, et al. Treatment response prediction and individualized identification of first-episode drug-naïve schizophrenia using brain functional connectivity. *Mol Psychiatry*. 2020;25(4):906-913. doi:10.1038/s41380-018-0106-5
25. Li H, Guo W, Liu F, et al. Enhanced baseline activity in the left ventromedial putamen predicts individual treatment response in drug-naïve, first-episode schizophrenia: Results from two independent study samples. *EBioMedicine*. 2019;46:248-255. doi:10.1016/j.ebiom.2019.07.022
26. Wu R, Ou Y, Liu F, et al. Reduced Brain Activity in the Right Putamen as an Early Predictor for Treatment Response in Drug-Naïve, First-Episode Schizophrenia. *Front Psychiatry*. 2019;10:741. doi:10.3389/fpsy.2019.00741
27. Kapur S, Remington G. Dopamine D(2) receptors and their role in atypical antipsychotic action: still necessary and may even be sufficient. *Biol Psychiatry*. 2001;50(11):873-883. doi:10.1016/s0006-3223(01)01251-3
28. Kaar SJ, Natesan S, McCutcheon R, Howes OD. Antipsychotics: Mechanisms underlying clinical response and side-effects and novel treatment approaches based on pathophysiology. *Neuropharmacology*. 2020;172:107704. doi:10.1016/j.neuropharm.2019.107704

29. Wang L-X, Guo F, Zhu Y-Q, et al. Effect of second-generation antipsychotics on brain network topology in first-episode schizophrenia: A longitudinal rs-fMRI study. *Schizophrenia Research*. 2019;208:160-166. doi:10.1016/j.schres.2019.03.015
30. Zou Q-H, Zhu C-Z, Yang Y, et al. An improved approach to detection of amplitude of low-frequency fluctuation (ALFF) for resting-state fMRI: Fractional ALFF. *Journal of Neuroscience Methods*. 2008;172(1):137-141. doi:10.1016/j.jneumeth.2008.04.012
31. Aiello M, Salvatore E, Cachia A, et al. Relationship between simultaneously acquired resting-state regional cerebral glucose metabolism and functional MRI: a PET/MR hybrid scanner study. *Neuroimage*. 2015;113:111-121. doi:10.1016/j.neuroimage.2015.03.017
32. Nugent AC, Martinez A, D'Alfonso A, Zarate CA, Theodore WH. The relationship between glucose metabolism, resting-state fMRI BOLD signal, and GABAA-binding potential: a preliminary study in healthy subjects and those with temporal lobe epilepsy. *J Cereb Blood Flow Metab*. 2015;35(4):583-591. doi:10.1038/jcbfm.2014.228
33. Jiao F, Gao Z, Shi K, et al. Frequency-Dependent Relationship Between Resting-State fMRI and Glucose Metabolism in the Elderly. *Front Neurol*. 2019;10:566. doi:10.3389/fneur.2019.00566
34. Marchitelli R, Aiello M, Cachia A, et al. Simultaneous resting-state FDG-PET/fMRI in Alzheimer Disease: Relationship between glucose metabolism and intrinsic activity. *Neuroimage*. 2018;176:246-258. doi:10.1016/j.neuroimage.2018.04.048
35. Sato JR, Biazoli CE, Moura LM, et al. Association Between Fractional Amplitude of Low-Frequency Spontaneous Fluctuation and Degree Centrality in Children and Adolescents. *Brain Connect*. 2019;9(5):379-387. doi:10.1089/brain.2018.0628
36. Di X, Kim EH, Huang C-C, Tsai S-J, Lin C-P, Biswal BB. The influence of the amplitude of low-frequency fluctuations on resting-state functional connectivity. *Front Hum Neurosci*. 2013;7:118. doi:10.3389/fnhum.2013.00118
37. Yan C-G, Cheung B, Kelly C, et al. A comprehensive assessment of regional variation in the impact of head micromovements on functional connectomics. *Neuroimage*. 2013;76:183-201. doi:10.1016/j.neuroimage.2013.03.004
38. Zuo X-N, Di Martino A, Kelly C, et al. The oscillating brain: Complex and reliable. *NeuroImage*. 2010;49(2):1432-1445. doi:10.1016/j.neuroimage.2009.09.037
39. Küblböck M, Woletz M, Höflich A, et al. Stability of low-frequency fluctuation amplitudes in prolonged resting-state fMRI. *Neuroimage*. 2014;103:249-257. doi:10.1016/j.neuroimage.2014.09.038
40. Turner JA, Chen H, Mathalon DH, et al. Reliability of the amplitude of low-frequency fluctuations in resting state fMRI in chronic schizophrenia. *Psychiatry Research: Neuroimaging*. 2012;201(3):253-255. doi:10.1016/j.psychresns.2011.09.012
41. Kapur S, Phillips AG, Insel TR. Why has it taken so long for biological psychiatry to develop clinical tests and what to do about it? *Molecular Psychiatry*. 2012;17(12):1174-1179. doi:10.1038/mp.2012.105

42. Lui S, Li T, Deng W, et al. Short-term effects of antipsychotic treatment on cerebral function in drug-naïve first-episode schizophrenia revealed by “resting state” functional magnetic resonance imaging. *Arch Gen Psychiatry*. 2010;67(8):783-792. doi:10.1001/archgenpsychiatry.2010.84
43. Hu M-L, Zong X-F, Zheng J-J, et al. Short-term Effects of Risperidone Monotherapy on Spontaneous Brain Activity in First-episode Treatment-naïve Schizophrenia Patients: A Longitudinal fMRI Study. *Sci Rep*. 2016;6:34287. doi:10.1038/srep34287
44. Liang S, Wang Q, Greenshaw AJ, et al. Aberrant triple-network connectivity patterns discriminate biotypes of first-episode medication-naïve schizophrenia in two large independent cohorts. *Neuropsychopharmacology*. Published online January 6, 2021. doi:10.1038/s41386-020-00926-y
45. Kottaram A, Johnston LA, Tian Y, et al. Predicting individual improvement in schizophrenia symptom severity at 1-year follow-up: Comparison of connectomic, structural, and clinical predictors. *Hum Brain Mapp*. 2020;41(12):3342-3357. doi:10.1002/hbm.25020
46. Bergé D, Lesh TA, Smucny J, Carter CS. Improvement in prefrontal thalamic connectivity during the early course of the illness in recent-onset psychosis: a 12-month longitudinal follow-up resting-state fMRI study. *Psychol Med*. Published online December 16, 2020:1-9. doi:10.1017/S0033291720004808
47. Zhang Y, Xu L, Hu Y, et al. Functional Connectivity Between Sensory-Motor Subnetworks Reflects the Duration of Untreated Psychosis and Predicts Treatment Outcome of First-Episode Drug-Naïve Schizophrenia. *Biological Psychiatry: Cognitive Neuroscience and Neuroimaging*. 2019;4(8):697-705. doi:10.1016/j.bpsc.2019.04.002
48. Blessing EM, Murty VP, Zeng B, Wang J, Davachi L, Goff DC. Anterior Hippocampal–Cortical Functional Connectivity Distinguishes Antipsychotic Naïve First-Episode Psychosis Patients From Controls and May Predict Response to Second-Generation Antipsychotic Treatment. *Schizophrenia Bulletin*. 2020;46(3):680-689. doi:10.1093/schbul/sbz076
49. Kraguljac NV, White DM, Hadley N, et al. Aberrant Hippocampal Connectivity in Unmedicated Patients With Schizophrenia and Effects of Antipsychotic Medication: A Longitudinal Resting State Functional MRI Study. *Schizophr Bull*. 2016;42(4):1046-1055. doi:10.1093/schbul/sbv228
50. Anticevic A, Hu X, Xiao Y, et al. Early-Course Unmedicated Schizophrenia Patients Exhibit Elevated Prefrontal Connectivity Associated with Longitudinal Change. *J Neurosci*. 2015;35(1):267-286. doi:10.1523/JNEUROSCI.2310-14.2015
51. Kraguljac NV, White DM, Hadley JA, et al. Abnormalities in large scale functional networks in unmedicated patients with schizophrenia and effects of risperidone. *Neuroimage Clin*. 2016;10:146-158. doi:10.1016/j.nicl.2015.11.015
52. Hadley JA, Nenert R, Kraguljac NV, et al. Ventral tegmental area/midbrain functional connectivity and response to antipsychotic medication in schizophrenia. *Neuropsychopharmacology*. 2014;39(4):1020-1030. doi:10.1038/npp.2013.305
53. Chan SY, Brady R, Hwang M, et al. Heterogeneity of Outcomes and Network Connectivity in Early-Stage Psychosis: A Longitudinal Study. *Schizophr Bull*. 2021;47(1):138-148. doi:10.1093/schbul/sbaa079

54. Duan X, Hu M, Huang X, et al. Effects of risperidone monotherapy on the default-mode network in antipsychotic-naïve first-episode schizophrenia: Posteromedial cortex heterogeneity and relationship with the symptom improvements. *Schizophr Res.* 2020;218:201-208. doi:10.1016/j.schres.2020.01.001
55. Duan X, Hu M, Huang X, et al. Effect of Risperidone Monotherapy on Dynamic Functional Connectivity of Insular Subdivisions in Treatment-Naive, First-Episode Schizophrenia. *Schizophr Bull.* 2020;46(3):650-660. doi:10.1093/schbul/sbz087
56. Li M, Deng W, Das T, et al. Neural substrate of unrelenting negative symptoms in schizophrenia: a longitudinal resting-state fMRI study. *Eur Arch Psychiatry Clin Neurosci.* 2018;268(7):641-651. doi:10.1007/s00406-017-0851-5
57. Lottman KK, Kraguljac NV, White DM, et al. Risperidone Effects on Brain Dynamic Connectivity-A Prospective Resting-State fMRI Study in Schizophrenia. *Front Psychiatry.* 2017;8:14. doi:10.3389/fpsyt.2017.00014
58. Wang Y, Tang W, Fan X, et al. Resting-state functional connectivity changes within the default mode network and the salience network after antipsychotic treatment in early-phase schizophrenia. *Neuropsychiatr Dis Treat.* 2017;13:397-406. doi:10.2147/NDT.S123598
59. Li F, Lui S, Yao L, et al. Longitudinal Changes in Resting-State Cerebral Activity in Patients with First-Episode Schizophrenia: A 1-Year Follow-up Functional MR Imaging Study. *Radiology.* 2016;279(3):867-875. doi:10.1148/radiol.2015151334
60. Sarpal DK, Robinson DG, Lencz T, et al. Antipsychotic treatment and functional connectivity of the striatum in first-episode schizophrenia. *JAMA Psychiatry.* 2015;72(1):5-13. doi:10.1001/jamapsychiatry.2014.1734
61. Rolls ET. Attractor cortical neurodynamics, schizophrenia, and depression. *Transl Psychiatry.* 2021;11(1):215. doi:10.1038/s41398-021-01333-7
62. Kaneko G, Sanganahalli BG, Groman SM, et al. Hypofrontality and Posterior Hyperactivity in Early Schizophrenia: Imaging and Behavior in a Preclinical Model. *Biol Psychiatry.* 2017;81(6):503-513. doi:10.1016/j.biopsych.2016.05.019
63. Wallis JD. Orbitofrontal cortex and its contribution to decision-making. *Annu Rev Neurosci.* 2007;30:31-56. doi:10.1146/annurev.neuro.30.051606.094334
64. Costa VD, Tran VL, Turchi J, Averbeck BB. Reversal learning and dopamine: a bayesian perspective. *J Neurosci.* 2015;35(6):2407-2416. doi:10.1523/JNEUROSCI.1989-14.2015
65. Kahnt T, Weber SC, Haker H, Robbins TW, Tobler PN. Dopamine D2-receptor blockade enhances decoding of prefrontal signals in humans. *J Neurosci.* 2015;35(9):4104-4111. doi:10.1523/JNEUROSCI.4182-14.2015
66. Akkus F, Treyer V, Ametamey SM, Johayem A, Buck A, Hasler G. Metabotropic glutamate receptor 5 neuroimaging in schizophrenia. *Schizophrenia Research.* 2017;183:95-101. doi:10.1016/j.schres.2016.11.008

67. Homayoun H, Moghaddam B. Orbitofrontal cortex neurons as a common target for classic and glutamatergic antipsychotic drugs. *PNAS*. 2008;105(46):18041-18046. doi:10.1073/pnas.0806669105
68. Weinberger DR, Berman KF, Zec RF. Physiologic dysfunction of dorsolateral prefrontal cortex in schizophrenia. I. Regional cerebral blood flow evidence. *Arch Gen Psychiatry*. 1986;43(2):114-124. doi:10.1001/archpsyc.1986.01800020020004
69. González-Vivas C, Soldevila-Matías P, Sparano O, et al. Longitudinal studies of functional magnetic resonance imaging in first-episode psychosis: A systematic review. *Eur psychiatr*. 2019;59:60-69. doi:10.1016/j.eurpsy.2019.04.009
70. Molent C, Olivo D, Wolf RC, Balestrieri M, Sambataro F. Functional neuroimaging in treatment resistant schizophrenia: A systematic review. *Neurosci Biobehav Rev*. 2019;104:178-190. doi:10.1016/j.neubiorev.2019.07.001
71. Arnsten AFT, Datta D, Wang M. The genie in the bottle-magnified calcium signaling in dorsolateral prefrontal cortex. *Mol Psychiatry*. Published online December 15, 2020. doi:10.1038/s41380-020-00973-3
72. Kani AS, Shinn AK, Lewandowski KE, Öngür D. Converging effects of diverse treatment modalities on frontal cortex in schizophrenia: A review of longitudinal functional magnetic resonance imaging studies. *J Psychiatr Res*. 2017;84:256-276. doi:10.1016/j.jpsychires.2016.10.012
73. Utevsky AV, Smith DV, Huettel SA. Precuneus Is a Functional Core of the Default-Mode Network. *J Neurosci*. 2014;34(3):932-940. doi:10.1523/JNEUROSCI.4227-13.2014
74. Li R, Utevsky AV, Huettel SA, et al. Developmental Maturation of the Precuneus as a Functional Core of the Default Mode Network. *J Cogn Neurosci*. 2019;31(10):1506-1519. doi:10.1162/jocn_a_01426