

## **Covid-19 Associated Hepatitis in Children (CAH-C) during the second wave of SARS-CoV-2 infections in Central India: Is it a complication or transient phenomenon.**

Sumit Kumar Rawat MD<sup>1\*</sup>, Ajit Anand Asati MD<sup>1</sup>, Ashish Jain MD<sup>1</sup>, R K Ratho MD<sup>2</sup>

1. Bundelkhand Govt. Medical College Sagar, Madhya Pradesh, India.
2. Post Graduate Institute of Medical Education and Research, Chandigarh, India

**Grant support:** NA

Key words: Hepatitis, Covid-19, SARS-CoV-2, Pediatric

### **Abstract**

**Background:** Besides Covid-19, SARS-CoV-2 infection has been associated with Multiple Inflammatory Syndrome in children (MIS-C). However, a unique presentation of a transient form of hepatitis in pediatric age group occurring subsequent to the asymptomatic SARS-CoV-2 infection is yet to be reported. Presently the clinical presentation, temporal association and viral parameters of the cases of CAH-C contrasting to MIS-C hepatitis, have been reported

**Methods:** As a retrospective and follow up observational study we reviewed all pediatric patients presenting with acute hepatitis. There were increased numbers cases with features of hepatitis in pediatric group during the second wave of SARS CoV-2 infections, where 25 children or adolescents developing sudden onset of acute hepatitis without prior liver disease or familiar etiology of acute hepatitis. They had history of COVID-19 RT-PCR positivity within 3-6 weeks or a retrospectively proven Covid-19 infection with high titer SARS CoV-2 antibodies. In contrast a group of 8 COVID-19 patients had features of MIS-C with protracted illness and multiple organ involvement.

**Results:** Among 33 paediatric patients presented with hepatitis, 25 patients had features of CAH-C, They had symptoms of hepatitis only without typical Covid-19 presentations. These patients had normal to borderline increase in inflammatory markers with uneventful recovery following supportive treatment. Whereas remaining 8

MIS-C patients with hepatitis had elevated level of inflammatory markers and required admission in critical care with a mortality of 37.5% (3/8).

**Conclusion:** With the emergence of newer variants of concern (VOC) including the Delta variant which has now spread to more than 60 countries and was responsible for the massive wave of Covid-19 across India, with changing presentations where CAH-C may be one of them. Such new entities need to be identified and differentiated from other emerging syndromes in children for appropriate management.

**Introduction:** Severe acute respiratory syndrome coronavirus 2 (SARS-CoV-2), the cause of ongoing pandemic, was first identified in China in December 2019, with its subsequent epicenters being recognized in Western countries followed by India during the first wave of pandemic (1). Initial reports of SARS-CoV-2 infection interestingly indicated that young children were disproportionately spared with either asymptomatic or mild disease (2). Subsequently a novel entity of “multisystem inflammatory syndrome in children” (MIS-C) was surfaced out possibly with a linkage to SARS-CoV-2 infection (3).

Earliest reports of MIS-C were observed in children and adolescents in April 2020, in UK (4). Subsequently, the following features had been observed in patients of MIS-C (5); “Serious illness leading to hospitalization, an age of less than 21 years, fever (body temperature, >38.0°C) or report of subjective fever lasting at least 24 hours, laboratory evidence of inflammation, multi organ involvement (i.e., at least two systems), and laboratory-confirmed SARS-CoV-2 infection (positive SARS-CoV-2 real-time reverse-transcriptase polymerase chain reaction [RT-PCR] or antibody test during hospitalization) or an epidemiologic link to a person with Covid-19” according to the Centers for Disease Control and Prevention (CDC) (6).

Although initial reports did not mention much about hepatitis as a prominent feature of MIS-C, some of the subsequent literature later in the year 2020. It has been mentioned such cases might be associated with severe clinical manifestations and poor outcome (7).

The first wave of SARS-CoV-2 pandemic persisted till November 2020 causing a large number of infections across India, did not cause any serious disease in children similar

to the observation from west (8). In contrast to the ongoing massive second wave of Covid-19 in April 2021 in India (9), serious concerns in children being affected became apparent. Newer variants of concern (VOC) including delta (B.1.617.2) which spread more than 60 countries, was largely responsible for the massive upsurge in Covid-19 cases (10). Because of the newer variants, the disease presentations varied from respiratory disease to newer entity of MIS-C in children (11).

The first wave of SARS-CoV-2 pandemic that persisted till November 2020 causing a large number of infections across India did not cause any serious disease in children, similar to the observation from west (8). However, in contrast the ongoing massive second wave of Covid-19 in April 2021 in India (9), serious concerns in children being affected became apparent. Newer variants of concern (VOC) including delta (B.1.617.2) variant which spread to more than 60 countries, was largely responsible for this massive upsurge in Covid-19 cases (10). Because of the newer variants disease presentations varied from respiratory disease to newer entity of MIS-C cases in children (11).

Among MIS-C cases hepatic injury has been reported in around 60% of cases (11), while on the other hand among adult patients of Covid-19, most studies have reported signs of liver injury to occur in 20-30% of cases, among them it has been linked to disease severity and outcome (12). This Potentiates the observations that age related differences do exist in the hepatitis associated with Covid-19. Effects of liver injury on outcome in children with Covid-19 are yet to be found, in the context of emerging VOC like the delta variant, with a possibility that different phenotypes of liver injury or complications caused by differences in these. This is substantiated by a recent study which documented that two different phenotypes of liver injury were associated with SARS-CoV2 infection in children, where first phenotype seen during Covid-19 and the second one is seen in cases of MIS-C (13).

MIS-C cases although relatively less in proportion might pose a burden on the limited resources during times of pandemic, given the admission requirements to critical care beds and involving multi-disciplinary treatment inputs. Early identification of phenotype enables timely initiation of age and phenotype targeted treatment strategies that holds the key to prevent adverse outcomes.

During the ongoing second wave of SARS-CoV-2 infections along-with children presenting with MIS-C, other presentations like respiratory distress, shock, encephalitis like features and sudden rise in cases of hepatitis among children was noticed. This hepatitis features were typically setting in among previously asymptomatic children beyond 2-weeks post Covid-19, noticeably many of them lacking the hallmarks of inflammation seen in MIS-C. Since these unique cases far outnumbered any other presentations of hepatitis seen in children during this period, the study was planned to correctly identify the cases, to differentiate from the other entities, and to find out its temporal relation with COVID-19 infections.

To our knowledge, none of the published studies and reports took a detailed account of such incidences of post Covid-19 hepatitis in pediatric or adolescent age group, as in CAH-C which was unique, different from both the liver injury phenotypes described earlier in children and has been observed during the ongoing second wave of SARS-CoV2 infections.

## Methods

**Patients and Study Design:** It was a retrospective and follow up observational study of children presented with acute hepatitis during April 2021 to Mid-June 2021 at a tertiary care institute in Sagar, which is a dedicated Covid-19 (500 beds) center for the entire region as *shown in figure 1*. During the study period a total of 5539 pediatric patients were screened in Sagar district (Central India) by Indian Council of Medical research (ICMR) recommended RT-PCR assay (14), where 469 children within 14 years of age were found to be positive for Covid-19. As per existing protocols, all the positive cases, their family members and contacts were monitored through central control command telemedicine center from the Sagar smart city control room (15). Children presented with serious symptoms including hepatitis, during post Covid illness were referred to our associated hospital for admission. A record review for all such patients was performed and follow up information was collected from the control command center and from the hospital helpdesk center. The outline of the procedures has been shown in *figure 2*.

**Inclusion criteria:** Children presented with clinical features and laboratory findings (elevated transaminases) suggestive of acute hepatitis during post Covid-19 were enrolled in the study for further evaluation. Based on temporal association in relation to Covid-19, disease severity and presence or absence of multi system involvement we could differentiate these hepatitis patients into two entirely different entities.

- 1) Covid-19 associated hepatitis in children (CAH-C): Those paediatric patients presented with “ transient hepatitis with sudden onset, raised transaminases, non-obstructive jaundice, no history of underlying liver disease, negative for evidence of other known causes of acute hepatitis and with a laboratory evidence of recent Covid-19 in terms of COVID-19 RT-PCR positivity within 3-6 weeks or a retrospectively proven Covid-19 infection with high titer SARS CoV-2 antibodies.
- 2) MIS-C hepatitis: Patients falling within CDC case definitions of MIS-C (15) and presented with acute hepatitis i.e. elevated transaminases .

**Exclusion criteria:** Those patients who had evidence of pre-existing liver disease, drug induced liver injury, MIS-C cases without evidence of liver injury were excluded from the study.

**Laboratory work up:** SARS-CoV-2 RT-PCR was done at the ICMR recognized Virology research and diagnostic laboratory (VRDL) of the institute with established protocols and results were recorded on the national portal. All patients presenting with hepatitis were thoroughly evaluated in the institute as per the standard protocols including complete blood counts, liver function tests, renal function tests, serum ferritin, CRP, D Dimer, LDH, myocardial enzymes, procalcitonin and a repeat RT-PCR for Covid-19 in the Central clinical lab of the dedicated Covid-19 hospital of the institute. Children with signs of acute hepatitis were further evaluated for HbsAg, anti-hepatitis E virus (HEV) IgM, anti-hepatitis A virus (HAV) IgM, anti HCV, anti leptospira IgM, anti EBV IgM, anti VZV IgM, Widal test, malaria antigen, malaria antibody, antinuclear antibody (ANA), anti LKM antibody, total IgG, anti SARS-CoV-2 IgG, dengue NS1 antigen and IgM (antibody tests were done in the department of Microbiology with ICMR recommended ELISA kits)(16).

**Treatment:** Children in the CAH-C group (n=25) admitted in general wards were given supportive therapy consisting of anti-emetics, IV fluids, Multivitamins, Zinc without any use of steroids. Those with MIS-C and hepatitis (n=8) were treated as per the ICMR recommended Covid-19 regimen for children and other supportive treatment inclusive of IVIG (n=1) in child with neurologic symptoms, steroids in all, and oxygen administration (n=3) in intensive care settings, without mechanical ventilation.

**Outcomes:** Survival at 3 weeks of follow up was taken as an endpoint for assessment of outcomes.

**Statistical analysis:** The data was extracted and entered in MS excel, proportions and percentages were calculated for categorical variables. The chi-square test was performed to check out possible associations between the categorical variables like association of sex, clinical outcome with either of entities. After checking the normality of data, t-test was applied to compare the mean values of different baseline laboratory parameters such as age, days of hospital stay etc. For those variables not having normality Mann Whitney U test was applied; A p-value of less than 0.05 was considered significant. The statistical analysis was performed using SPSS trial version 16 for windows.

**Ethics approval:** The follow-up and analysis work was performed after obtaining due approval of the institution human ethics committee.

**Funding:** No external funding was used for the study; routine workup was supported by the institutional funds used in patient care.

## Results

**Patient characteristics:** During the study period from April 2021 to mid-June 2021 among the screened population of 5539, 469(8.46%) children with a male to female ratio of 299 : 170(1.8:1) were found to be Covid-19 RT-PCR positive. The age group of these children ranged from 4 months till 14 years with mean age of  $8.9 \pm 3.8$  years ( *figure 3.a*). Among the admitted patients, 33 presented with features of hepatitis (*Table 1*). As per the study criteria 25 (Male:Female 16:9) and 8 ( Male : Female 2:6) patients could

be categorized into CAH-C and MIS-C respectively. The distribution of age groups for both entities is depicted in *figure 3.b* where majority belonged to **2-6 years'** age group. The cases started in mid-April 2021 and peaked around the end of May 2021. The relative incidences of hepatitis cases in temporal relation to Covid-19 cases have been shown in *figure 4*.

### **Clinical and laboratory findings:**

**CAH-C:** Children presented with typical symptoms of hepatitis including nausea, vomiting, loss of appetite, weakness and mild fever usually not exceeding 100 °F. The frequency of symptoms is shown in *figure 5 a*. Icterus was present on examination in 18 of the cases. None of these children had experienced any serious or typical symptoms of Covid-19 on any significant findings on chest X-ray. The X-ray findings of CAH-C versus MIS-C have been shown in *figure 5 b*.

On laboratory investigation at admission for CAH-C cases, 23 had a RTPCR test negative for SARS CoV-2 by the time of admission( when was admitted), all cases had significantly elevated transaminases >10X ULN (ALT 400-4000) with median 575.2 (190.5-1625.7) U/L ( $p < 0.001$ ) and serum bilirubin with median 3.4 (2.45-6.55) mg/dl ( $p=0.000$ ), raised C reactive protein (CRP) with median 8.2 (5.5-11.7) mg/L ( $p < 0.015$ ), normal or slightly raised IL-6, median 8.1 (10.3-15.3) pg/ml ( $p=0.001$ ). They had slightly raised alkaline phosphatases 2X ULN ( $p= 0.29$ ), slightly elevated total IgG levels and normal platelet counts on majority of cases, normal D-Dimer in –patients( --/--) . All patients (100%) were positive for anti SARS-CoV-2, anti -N protein antibodies in high titers. 8 (38%) of them had positive IgM antibodies for Dengue and in 19 (90.4%) a Widal titer of more than 1:160, with negative ANA in all. On further work-up anti-VZV IgM in 7 (28%) and anti EBV-IgG was found in 6 (24%) of them respectively. The mean laboratory values of the groups have been depicted in *Table 2*.

**Outcomes:** All patients were discharged with supportive treatment without any complications with a mean hospital stay of 5.8 ( $\pm 1.0$ ) days and remained uneventful at 3 weeks follow up. There was no mortality reported in this group.



**MIS-C with hepatitis** : Children presented with moderate to severe symptoms of Covid-19. The persistent fever of  $>100^{\circ}\text{F}$  made them to be hospitalized. Besides persistent fever, they had cough, shortness of breath, abdominal pain, loss of appetite and weakness. Some of them developed ARDS and signs of multi organ failure mainly hypotension, swelling and some with liver failure. 4 (50%) children had features of pneumonia on chest X rays (*figure 5 b*). All were hospitalized in the intensive care unit.

On laboratory investigation: MIS-C patients presented with hepatitis had RTPCR test positive for SARS CoV-2 within 2-3 weeks, they were associated with markedly elevated CRP ( $p=0.015$ ), markedly elevated IL-6 ( $p=0.001$ ) and reduced albumin levels with median 3.3 (2.7-3.58) gm/dl ( $p=0.116$ ). They had reduced platelet counts in some cases, mild to moderately elevated transaminases (ALT 40-200 U/L), normal or borderline raised serum bilirubin, slightly raised alkaline phosphatases, raised procalcitonin, normal Widal titers (data available for  $n=5$  cases), negative IgM for dengue, positive ANA in 1 case and positive SARS-CoV-2 antibody test in 3 cases (test was available for  $n=5$  cases).

Outcomes: Among the MIS-C, children were having multi systemic involvement including lung disease, vasculitis, encephalitis, one child developed paralytic ileus which resolved on conservative treatment, however 3 (37.5%) out of 8 had an adverse outcome. These cases had protracted illness, the mean hospital stay in this group was  $9 (\pm 1.4)$  days, on 4 weeks follow up the remaining children recovered leading to a survival rate of 62.5%.

## Discussion

With the emergence of newer variants of concern and different waves of the Covid-19 pandemic in different countries, like the recent second wave of infections in India. In our study, 25 cases were identified a unique presentation of acute hepatitis defined as CAH-C, whereas MIS-C could account for hepatitis in 8 cases.

CAH-C cases were more commonly reported in the age group of 6-11 years and with male preponderance. Similar findings were observed in other large cohort studies



conducted among MIS-C cases. Somehow, with limited cases of 8 children with MIS-C female preponderance was noticed. Nonetheless, the liver injury is more common among male patients, which is thought to occur because of higher expression of ACE2 receptors in cholangiocytes among males.

The findings to be noted that CAH-C cases are not only asymptomatic Covid-19 course but also mild disease course. None of the CAH-C cases had any underlying morbidity. These cases presented after 2-4 weeks of showing mild symptoms of Covid-19, or remained asymptomatic for the same period following exposure to a lab confirmed case of Covid-19. These cases peaked following 3-4 weeks in relation to the peak of new cases of Covid-19 during the second wave of SARS-CoV-2 infections in central India.

These cases noticeably lacked any remarkably high inflammatory markers or systemic derangements observed in other two previously known phenotypes of liver injury associated with Covid-19 but had high levels of serum bilirubin and a more than 10x ULN, elevated transaminases which are unheard of in the previous two types. Prima facie, the biochemical parameters seen in CAH-C do not resemble either those observed in an active Covid-19 disease which generally has a more protracted course, or in cases with documented comorbidities (17).

These cases had distinct antibody responses with raised anti SARS-CoV-2 titers with values >50 COI in all the cases, significant Widal titers (>1:160 O, H), along with positive dengue IgM and anti-VZV IgM in 7/25 patients respectively. Positive anti-EBV IgG was seen in 6/25 cases. These findings points towards immune activation towards B cell stimulation giving rise to multiple antibody response as a result of polyclonal immune activation. Thus SARS-CoV-2 appears to be a potent immune-stimulator in these cases resulting polyclonal activation during transient hepatitis with self-limiting course seen exclusively in children. As of now these antibodies look to be doing more of an evil than a virtue offering any long term or short term protection.

Whether such polyclonal activation is a friend or a foe is just one of the worries since previous studies have reported differences among the antibody responses in children,

having a reduced breadth of spectrum against SARS-CoV-2 which may or may not be neutralizing versus a wide spectrum of neutralizing antibodies found in adults (18).

Another more important concern is associated with the value of such probable biologically false positive (BFP) antibody tests in diagnosis of other diseases in the times of this pandemic where similar febrile illnesses such as dengue and enteric fever remain endemic in certain geographic areas in developing countries like India.

All cases of CAH-C responded within a week with the help of supportive treatment and general care measures. None requiring specific anti-viral treatment. They were monitored carefully for deterioration in clinical course since these type of presentation observed first time and no guidelines were available for treatment of such cases. None of them required antiviral drugs, oxygen therapy or mechanical ventilation, which was the recommended line of treatment for cases with deterioration in Covid-19 (19). Cases of CAH-C had a hundred percent survival rate, at 4 week follow up thus indicating towards a separate phenotype than either Covid-19 induced liver injury or MIS-C which might have a grave outcome.

On the contrary, the MIS-C cases with hepatitis presented clinically with fever often >100 °F, respiratory distress, abdominal pain, loss of appetite, rash, conjunctival hemorrhages, and encephalitis-like features necessitating intensive care facility. These cases typically presented within 2-3 weeks of symptomatology with moderate to severe symptoms of Covid-19. Such cases peaked at around the same gap in relation to the peak of new cases of Covid-19, in Sagar.

Their laboratory assessment showed significant association with high inflammatory markers, which were often many folds to the UNL, with borderline elevated aminotransferases, slightly altered INR, markedly raised ferritin levels in 7/8 cases, elevated D-Dimer in 6/8 cases and decreased albumin levels in all cases. All had laboratory confirmed RTPCR positive for Covid-19 within 2-3 weeks, and 3/8 had developed anti SARS CoV-2 antibodies.

Cases diagnosed as MIS-C hepatitis were administered standard recommended therapy, including anti-viral drugs when needed, steroids in all cases, IVIG in 1 case, oxygen administration in 3 cases, and mechanical ventilation in 1 case. Despite the best of the treatment and efforts, 3 patients succumbed to the disease.

As MIS-C is known to be associated with significantly higher mortality and a poor survival rate (5), our findings in these cases were no different and only they had fair survival rate of 62.5 percent.

## **Conclusion**

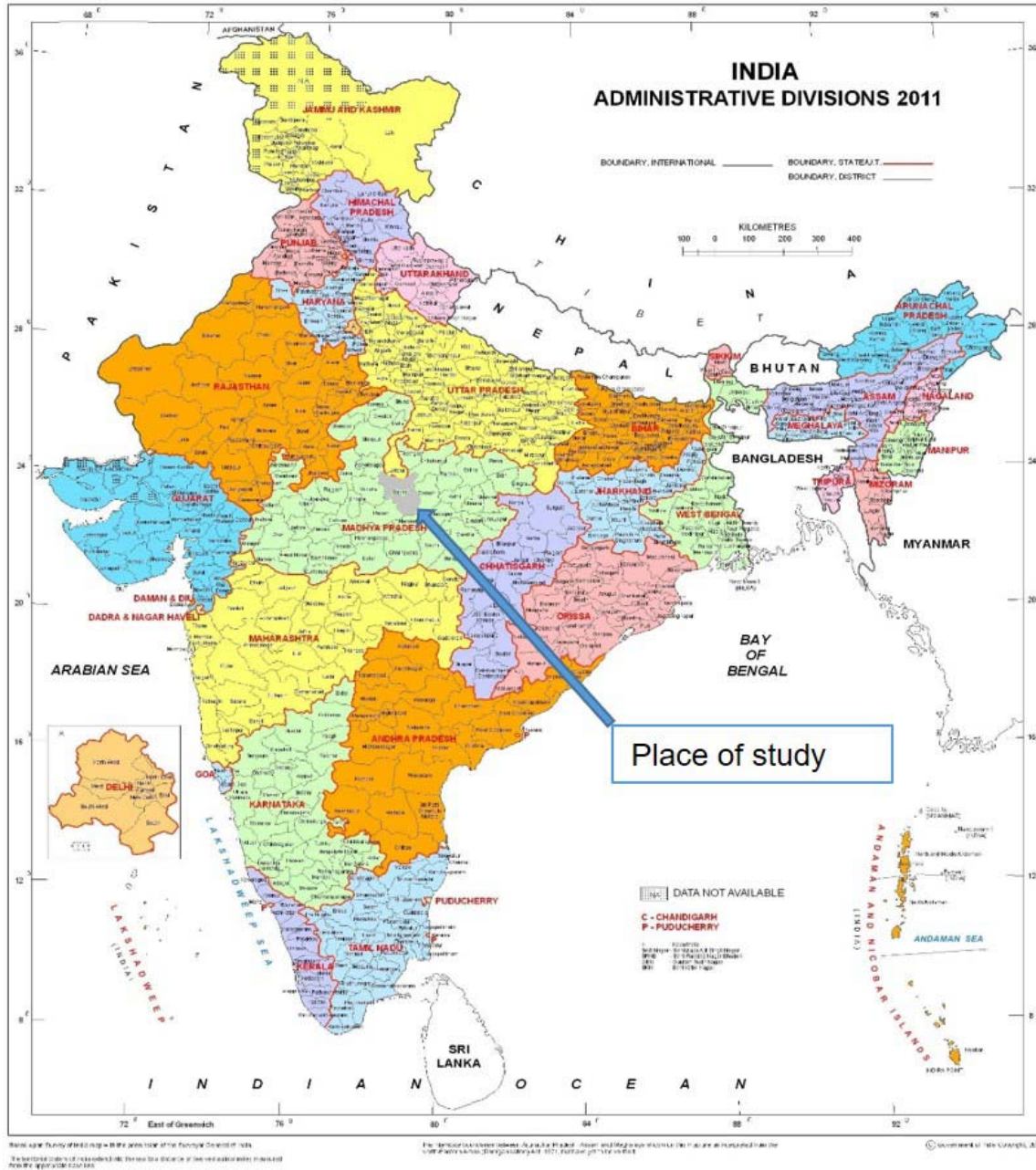
The timely recognition of the newly described entity of CAH-C, which is by far a transient phenomenon considering the distinct features described here, should not only facilitate the treating physician in using age and phenotype targeted approach for timely administering supportive therapy. But it will also help in preventing burden on resources in the times of pandemic, since the MIS-C hepatitis phenotype is more associated with disease severity and increased mortality.

## References

1. Hu B, Guo H, Zhou P, Shi Z-L. Characteristics of SARS-CoV-2 and COVID-19. *Nat Rev Microbiol*. 2021 Mar;19(3):141–54.
2. Guan W, Ni Z, Hu Y, Liang W, Ou C, He J, et al. Clinical Characteristics of Coronavirus Disease 2019 in China. *N Engl J Med* [Internet]. 2020 Feb 28 [cited 2021 Jun 20]; Available from: <https://www.nejm.org/doi/10.1056/NEJMoa2002032>
3. Viner RM, Whittaker E. Kawasaki-like disease: emerging complication during the COVID-19 pandemic. *The Lancet*. 2020 Jun 6;395(10239):1741–3.
4. Riphagen S, Gomez X, Gonzalez-Martinez C, Wilkinson N, Theocharis P. Hyperinflammatory shock in children during COVID-19 pandemic. *Lancet Lond Engl*. 2020;395(10237):1607–8.
5. Feldstein LR, Rose EB, Horwitz SM, Collins JP, Newhams MM, Son MBF, et al. Multisystem Inflammatory Syndrome in U.S. Children and Adolescents. *N Engl J Med*. 2020 Jun 29;NEJMoa2021680.
6. HAN Archive - 00432 | Health Alert Network (HAN) [Internet]. 2020 [cited 2021 Aug 10]. Available from: <https://emergency.cdc.gov/han/2020/han00432.asp>
7. Cantor A, Miller J, Zachariah P, DaSilva B, Margolis K, Martinez M. Acute Hepatitis Is a Prominent Presentation of the Multisystem Inflammatory Syndrome in Children: A Single-Center Report. *Hepatology*. 2020;72(5):1522–7.
8. Singh PP, Tamang R, Shukla M, Pathak A, Srivastava A, Gupta P, et al. Estimation of real-infection and immunity against SARS-CoV-2 in Indian populations. *medRxiv*. 2021 Apr 11;2021.02.05.21251118.
9. Mallapaty S. India's massive COVID surge puzzles scientists. *Nature*. 2021 Apr 21;592(7856):667–8.
10. Dougherty K. SARS-CoV-2 B.1.617.2 (Delta) Variant COVID-19 Outbreak Associated with a Gymnastics Facility — Oklahoma, April–May 2021. *MMWR Morb Mortal Wkly Rep* [Internet]. 2021 [cited 2021 Jul 14];70. Available from: <https://www.cdc.gov/mmwr/volumes/70/wr/mm7028e2.htm>
11. Gupta DCH S, Chopra MD N, Singh MD A, Gera R, Chellani MD H, Pandey PhD R, et al. Unusual Clinical Manifestations and Outcome of Multisystem Inflammatory Syndrome in Children (MIS-C) in a Tertiary Care Hospital of North India. *J Trop Pediatr*. 2021 Jan 29;67(1):fmaa127.
12. Phipps MM, Barraza LH, LaSota ED, Sobieszczyk ME, Pereira MR, Zheng EX, et al. Acute Liver Injury in COVID-19: Prevalence and Association with Clinical Outcomes in a Large U.S. Cohort. *Hepatol Baltim Md*. 2020 Sep;72(3):807–17.
13. Perez A, Cantor A, Rudolph B, Miller J, Kogan-Liberman D, Gao Q, et al. Liver involvement in children with SARS-COV-2 infection: Two distinct clinical phenotypes caused by the same virus. *Liver Int*. 2021 Apr 22;10.1111/liv.14887.

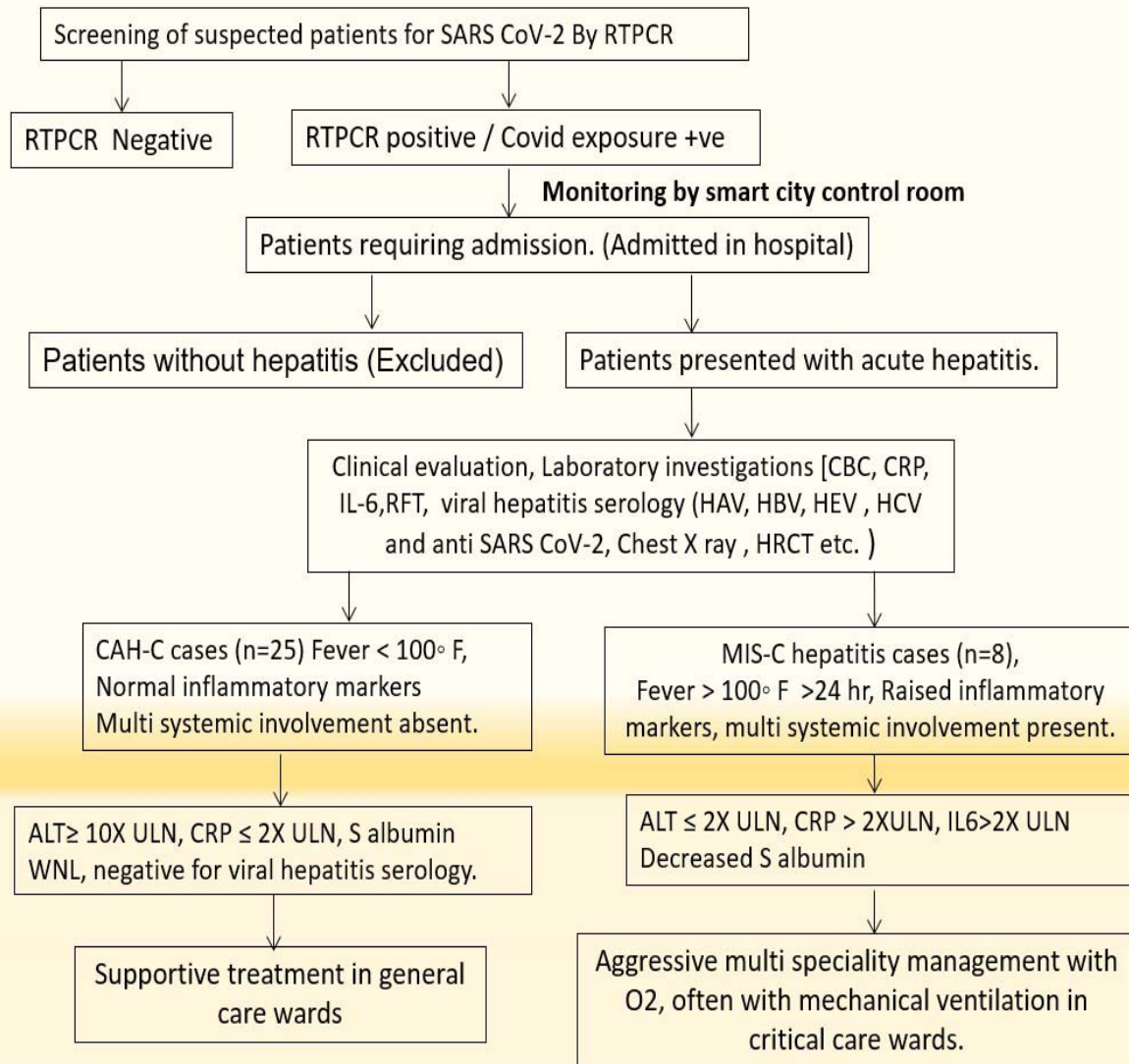
14. Technical Documents & Advisory [Internet]. [cited 2021 Jul 13]. Available from: <https://www.icmr.gov.in/ctechdocad.html>
15. 45 smart city command and control centres turn into Covid-19 war rooms - The Economic Times [Internet]. [cited 2021 Jul 13]. Available from: <https://economictimes.indiatimes.com/news/politics-and-nation/45-smart-city-command-and-control-centres-turn-into-covid-19-war-rooms/articleshow/74904329.cms>
16. ICMR\_PR\_IgG\_Elisa\_30052020.pdf [Internet]. [cited 2021 Jul 14]. Available from: [https://main.icmr.nic.in/sites/default/files/press\\_release\\_files/ICMR\\_PR\\_IgG\\_Elisa\\_30052020.pdf](https://main.icmr.nic.in/sites/default/files/press_release_files/ICMR_PR_IgG_Elisa_30052020.pdf)
17. Lv Y, Zhao X, Wang Y, Zhu J, Ma C, Feng X, et al. Abnormal Liver Function Tests Were Associated With Adverse Clinical Outcomes: An Observational Cohort Study of 2,912 Patients With COVID-19. *Front Med*. 2021 Jun 9;8:639855.
18. Weisberg SP, Connors TJ, Zhu Y, Baldwin MR, Lin W-H, Wontakal S, et al. Distinct antibody responses to SARS-CoV-2 in children and adults across the COVID-19 clinical spectrum. *Nat Immunol*. 2021 Jan;22(1):25–31.
19. Sanders JM, Monogue ML, Jodlowski TZ, Cutrell JB. Pharmacologic Treatments for Coronavirus Disease 2019 (COVID-19): A Review. *JAMA*. 2020 May 12;323(18):1824–36.

**Figure 1: Geographic location of the study**



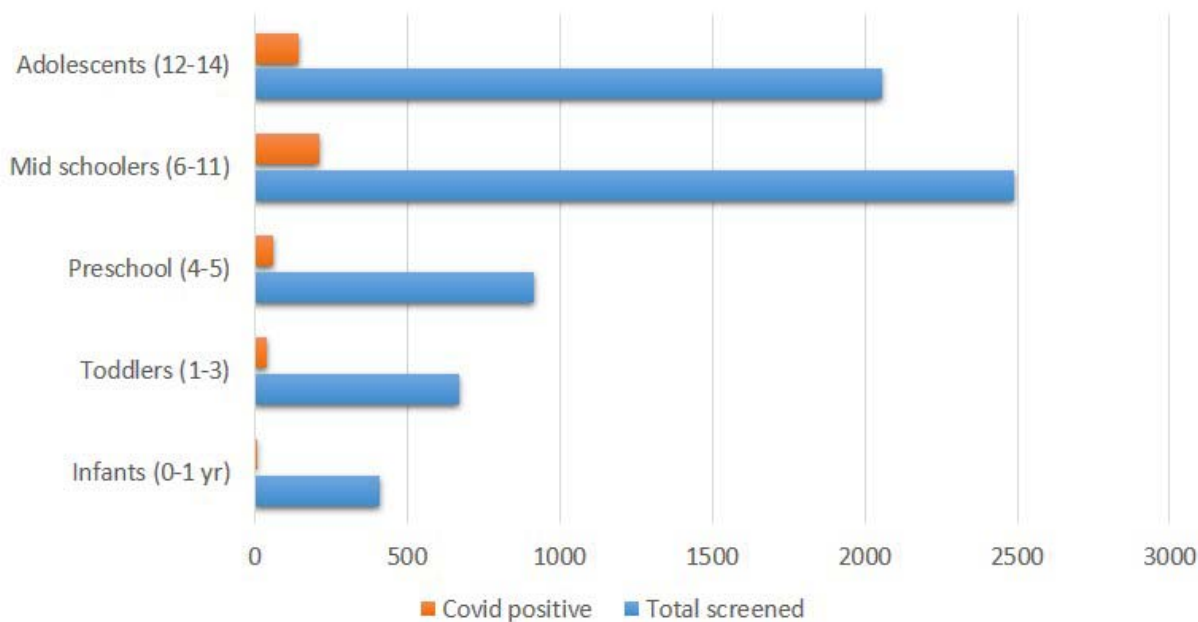


**Figure 2, Study workflow and case work-up**

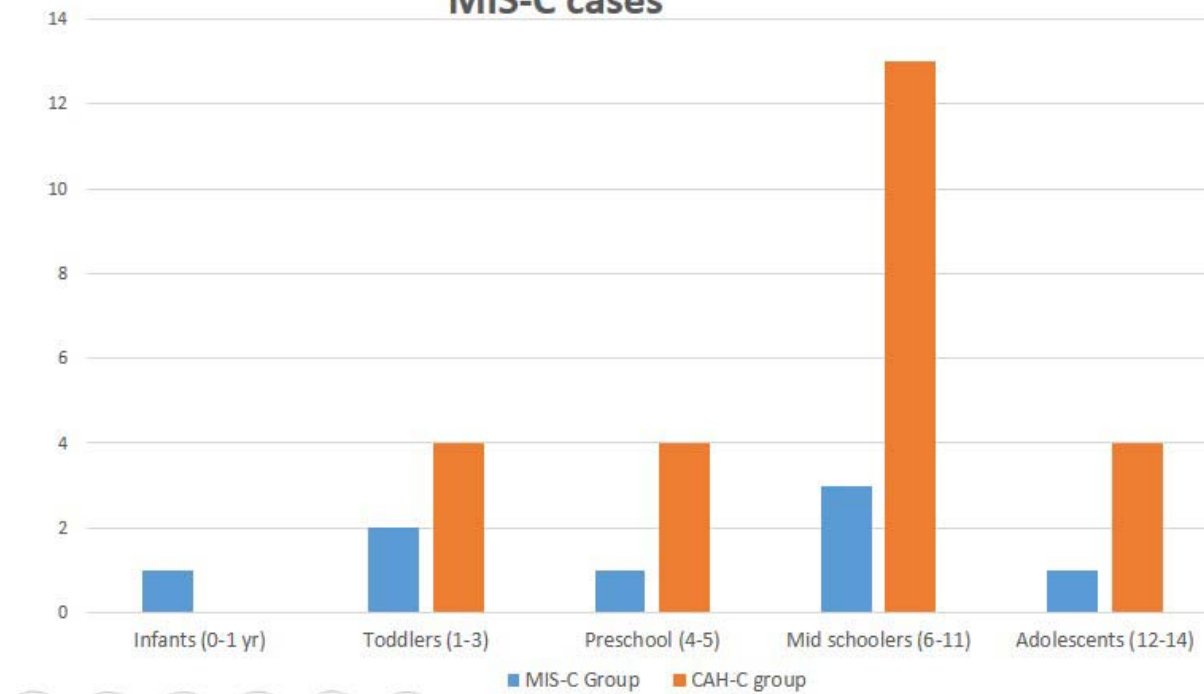




**Figure 3 a : Age group distribution of total screened population vs study population**



**Figure 3b: Age group distribution of CAH-C Vs MIS-C cases**

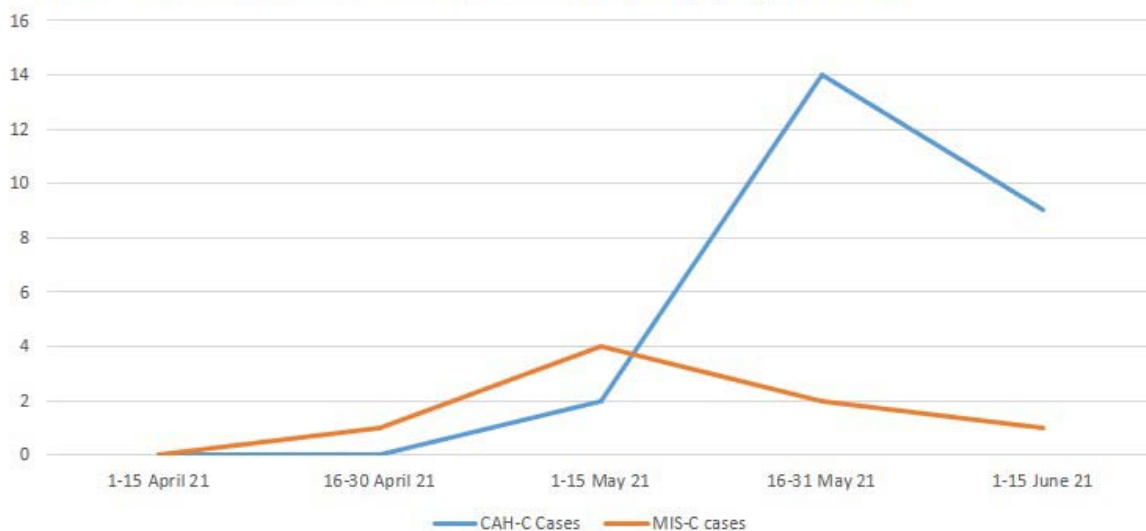


**Figure 4: Relative incidences of Covid-19 new cases Vs hepatitis cases**  
**Daily New Cases in India**

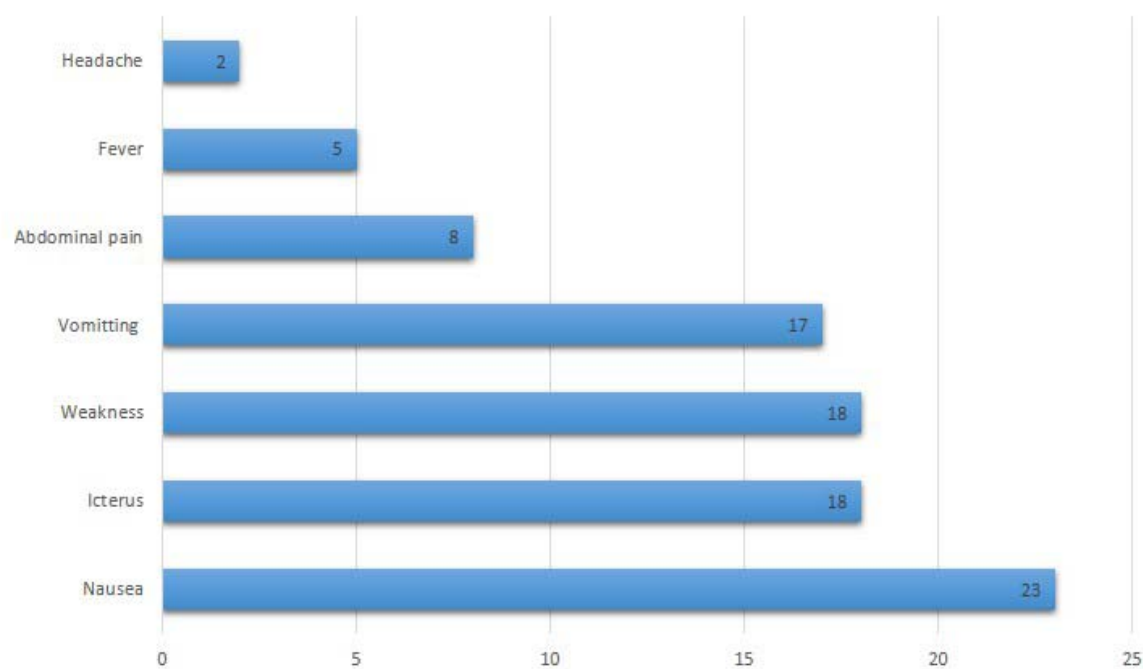


Sourced from worldometers.org

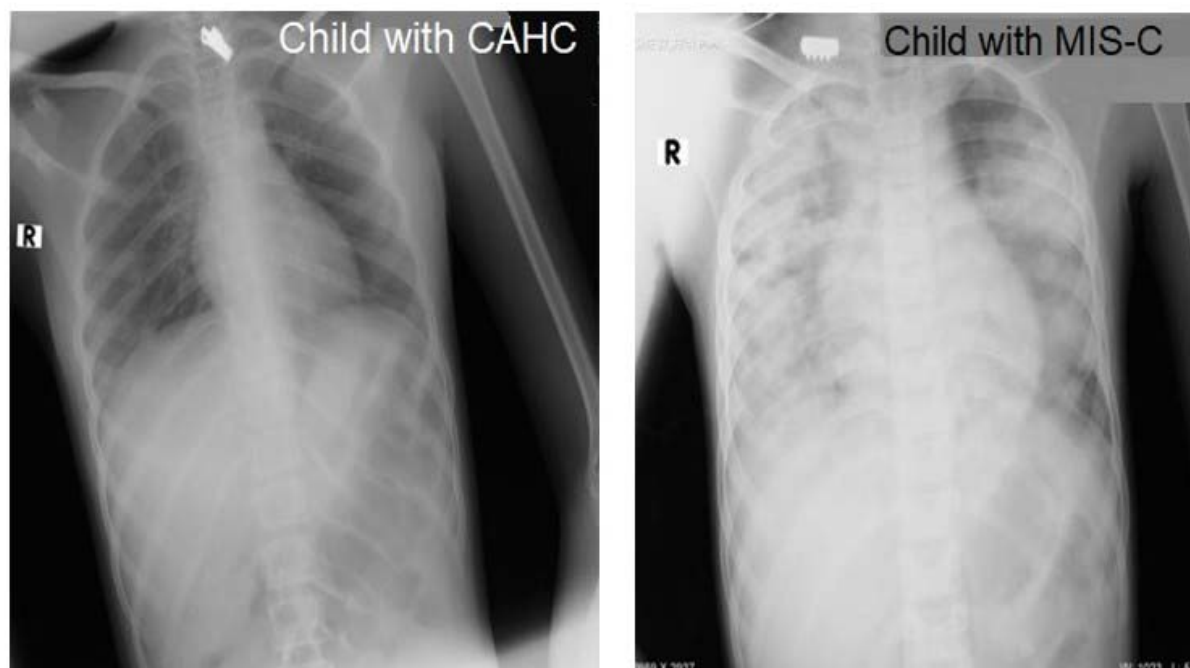
**Date-wise incidence of hepatitis in study population**



**Figure 2a: Presenting signs and symptoms in CAH-C Cases**



**Figure 5b : X ray findings of CAH-C Vs MIS-C cases.**



**Table 1: Patient characteristics of CAH-C Cases Vs MIS-C associated hepatitis cases.**

Patient characteristics	CAH-C (n=25)	MIS-C (n=8)	P value \$,*
Age, mean ± SD, years	7.04± 3.2	5.5± 4	0.28 (*)
Male sex, No. (%)	16 (64)	2 (8)	0.045 (\$)
ICU admission, n (%)	0 (0)	6 (75)	0.0003 (\$)
Day of presentation mean ± SD	20.2 ± 2.38	9.0 ± 3.6	0.0001 (*)
Anti SARS-CoV-2 antibody positive, n (%)	25 (100)	2 (25)	0.08 (\$)
Hospital stay, mean	5.8 ± 1.05	9 ± 1.4	0.0001 (*)
Clinical outcomes: ± SD			
Discharged alive n (%)	25 (100)	5 (62.5)	0.45 (\$)
In hospital death n (%)	0 (0)	2 (25)	0.02 (\$)
Post discharge death n (%)	0 (0)	1 (12.5)	0.09 (\$)
\$Chi square test, * Mann-Whitney u test			

**Table 2: Laboratory findings of CAC-H Vs MIS-C associated hepatitis cases.**

Lab values	CAH-C	MIS-C	P-value*
	Median (IQR)	Median (IQR)	
CRP, mg/L	8.10 (5.55-11.75)	25.90 (9.68-31.48)	0.015
IL6, pg/ml	12.40 (10.35-15.35)	186.40 (60.28-261.78)	0.001
Platelet, /mm <sup>3</sup> X10 <sup>3</sup>	2.40 (2.10-3.15)	2.70 (1.53-3.50)	0.705
T Bil, mg/dl	3.40 (2.45-6.55)	0.90 (0.90-1.32)	0.000
Albumin, gm/dl	3.50 (3.35-3.70)	3.30 (2.70-3.58)	0.116
AST, U/L	384.00 (129.00-1605.75)	97.00 (44.65-130.33)	0.002
ALT, U/L	575.20 (190.50-1625.75)	52.00 (43.47-150.50)	0.001
Alkaline PO4, U/L	326.10 (187.30-496.70)	245.50 (136.80-408.15)	0.294
INR, ratio	1.30 (1.00-1.52)	1.00 (1.00-1.59)	0.556
	*Mann-Whitney U test		
CRP, C-reactive protein; SD, standard deviation; IL-6, interleukin-6; AST, aspartate transaminase; ALT, alanine aminotransferase; TBil, Total bilirubin; INR, international normalized ratio			