

Association of Sleep-Disordered Breathing With Cardiovascular Events and Death in patients With Ischemic Heart Disease: A systematic review and meta-analysis

Yaodan Zhang¹, Jin Tan¹, Yuyang Miao², and Qiang Zhang¹

¹Department of Geriatrics, Tianjin Medical University General Hospital, Tianjin Geriatrics Institute, Tianjin, China

²Tianjin Medical University, Tianjin, China

Correspondence

Qiang Zhang, Department of Geriatrics, Tianjin Medical University General Hospital, Tianjin Geriatrics Institute, Anshan Road No. 154, Tianjin 300052, China.

Email: zhangqiangyulv@163.com

Abstract

Objective

Previous studies have identified that sleep-disordered breathing is associated with the increased risk of cardiovascular disease. However, CPAP, the preferred treatment of sleep apnea, does not appear to reduce the risk of adverse cardiovascular events and deaths in ischemic heart disease. Our aim was to determine whether OSA can be a prognostic factor for cardiovascular adverse events and deaths in patients with ischemia heart disease.

Methods

We searched Medline via PubMed, Embase, and the Cochrane Library database for clinical studies reporting the major adverse cardiac outcomes of SDB in patients with myocardial ischemia. Sleep apnea tests is mainly performed with cardiorespiratory polygraphy or portable diagnostic device.

Summary hazard ratio(HR) and 95% CIs were conducted using random-effects meta-analysis.

NOTE: This preprint reports new research that has not been certified by peer review and should not be used to guide clinical practice.

Results

Eighteen literatures were included, with total participants of 9,138. Sixteen studies reported MACCEs, there was significant association of SDB with MACCES (HR, 1.66[95% CI, 1.41 to 1.94]; $P < 0.0001$), all-cause mortality (HR, 1.39[95% CI 1.12 to 1.73], $P=0.0027$) and cardiovascular mortality (HR, 2.12[95% CI 1.23 to 3.65], $P=0.007$). Subgroup analysis showed that one study was the cause of heterogeneity, while no correlation between SDB and outcomes for sleep apnea severity, follow-up time or whether surgery was performed.

Conclusion

SDB is associated with adverse cardiac outcomes in patients with ischemic heart disease, suggesting that sleep apnea can be screened for patients with ischemic heart disease, which can be used as a clinically relevant strategy of secondary prevention to reduce the risk of adverse outcomes.

1. Introduction

Ischemic heart disease is an important health burden, and the short - and long-term outcomes have improved following the prompt detection and treatment. But the morbidity, repeat cardiovascular events, and mortality of ischemic heart disease remain high. OSA is a common disorder that affects 20-30% of adults and is caused by the collapse of the upper airway during sleep.¹ And sleep apnea, the recurrent shallow breathing or apnea during sleep, has been shown to have a consistent association with vascular morbidity and mortality.^{2, 3, 4} Studies have shown that the prevalence of OSA varies at different stages after acute coronary syndromes, including pre-operative, post-operative, and recovery or long-term.^{5, 6, 7} A recent meta-analysis found that the incidence of OSA after acute coronary syndromes is high,⁸ but a widespread absence of SDB as a target for screening in patients with ischemic heart disease.

PAP is a preferred treatment for sleep apnea, and has been reported to be associated with a moderate reduction in blood pressure,⁹ sleepiness, quality of life, cardiac ejection fraction, arrhythmias.¹⁰ Nevertheless, studies based on randomised controlled trial (RCT) has shown that CPAP was not associated with reduced risk of cardiovascular events and death in patients with ACS.^{11, 12} Taken together, these studies seem to suggest that OSA increased cardiovascular risk, but did not appear to increase the poor prognosis in patients with myocardial ischemia. However, a prospective study demonstrated that OSA may be a risk factor for predicting the risk of MACCEs in patients with coronary heart disease after percutaneous coronary intervention (PCI).¹³ And OSA could aggravate ventricular remodeling and decrease the survival rate of mice after myocardial infarction.¹⁴ Therefore, we aimed to gain insight the correlation between SDB and cardiovascular outcomes in patients with myocardial ischemia, and whether SDB can be used to predict the outcomes of patients with ischemia heart disease, which may provide guidance for early screening and intervention as secondary prevention.

2. Methods

2.1 Search Strategy

A systematic literature search was done according to the general guidelines outlined in the PRISMA statement.¹⁵ Medline via PubMed, Embase, and the Cochrane Library database (from their respective inceptions to February 22, 2021) were searched using medical subject headings(MeSH) and relevant text words that consisted of terms relating Sleep Apnea Syndromes and Myocardial Ischemia.(detailed search strategy was shown in appendix 1). There is no language restriction for this literature search.

2.2 Trial Inclusion Criteria

observational cohort study of ischemic heart disease patients (including unstable angina, non-ST segment elevation myocardial infarction, ST elevation myocardial infarction) who underwent or not underwent PCI/ coronary artery bypass graft surgery (CABG) that assessed the association of SDB with cardiovascular event were potentially included. In addition, a randomized controlled trial also compared the prevalence of cardiovascular events between ACS patients with OSA who received usual care and ACS patients without OSA.¹² One study investigated the relationship between moderate-to-severe OSA and major adverse cardiac events in ACS patients who underwent PCI.¹⁶ Also, one research reported all-cause mortality of severe OSA group in patients with ischemic heart disease or previous myocardial injury.¹⁷ Duplicate reports, studies with a follow-up duration of less than 12 months, a trial with less than 50 participants were excluded. Researches that did not report on cardiovascular outcomes, populations that have already been diagnosed with SDB at the beginning of the study were also excluded. We also excluded non-English-language studies.

2.3 Data Extraction

Two authors independently screened the literature by reading the titles and abstracts according to the inclusion and exclusion criteria to determine the literatures for review in full text. Then, the full-text of each paper was read independently by two authors, and the inclusion of literature was finally determined, and the reports that could not determine whether to be included was determined by a third researcher. After literature screening, the two authors extracted the included article information respectively, including first author, year of publication, nation or region where the study was conducted, inclusion criteria, included study dates, median follow-up duration, number of participants, mean AHI, number/percent of male participants, mean age of participants,

mean BMI of participants, number/percent of smoker participants, major adverse cardiovascular or cerebrovascular events (MACCEs), all-cause death, and cardiovascular mortality.

MACCEs, defined as a composite of cardiac death, nonfatal myocardial infarction, nonfatal stroke, and unplanned revascularization, or hospital admission for congestive heart failure or unstable angina. All-cause mortality, cardiovascular mortality, myocardial infarction, stroke, ischemic heart disease hospitalization, all repeat revascularization were also extracted. These outcome events were evaluated based on reported HR.

2.4 Quality assessment

The Newcastle-Ottawa Scale was used to assess the quality of observational cohort studies. Based on the previous work, we defined ≥ 7 scores as high quality, 4-6 scores as medium quality, and < 4 scores as low quality. The authors independently evaluated the quality of each study and resolved the discrepancies through discussion.

2.5 analysis

Data analysis was performed using R (version 4.0.3), and the Pooled outcome measures were combined using a random effects model. Heterogeneity was estimated by Cochran Q statistic, and $P < 0.05$ was considered to be heterogeneous. I^2 values used to estimate the percentage of heterogeneity with values 0–25%, 25%-75%, more than 75% correspond to low, moderate, and high probability of differences. Subgroup analysis were done to determine the source of heterogeneity according to whether surgery had been performed in the included studies, OSA severity and the duration of follow-up. In addition, Egger regression was conducted to evaluate the funnel plot for asymmetry, indicating the evidence of publication bias.

3.Results

3.1 Search Results and Characteristics of Included Studies

The literature search identified 7908 publications, among which, 179 literatures were reviewed in full text after de-duplication and reading the title/abstract. Finally, 18 literatures were included by reading the full text, including 12 prospective cohort studies, 3 retrospective studies, 2 ambiguous studies, and 1 randomized controlled trial. Fig 1 is the detailed information of the literature screening. Table 1 summarized the detailed characteristics of included studies. The number of participants of each study ranged from 68 to 1311. Median follow-up time for all studies was 30.5 months, and the diagnosis of sleep apnea was based on conventional polysomnographic or portable diagnostic device in all but 1 trial that used a Nocturnal pulse oximetry¹⁸. The detailed outcomes of participants of the included literatures were shown in Table 2. Newcastle–Ottawa Scale was used to evaluate the quality of research, which was shown in appendix 2.

3.2 Major adverse cardiovascular or cerebrovascular events (MACCEs)

Sixteen studies reported an increased Hazard ratio (HR) of MACCEs outcomes with SDB compared with controls in patients with myocardial ischemia,^{12, 13, 16, 18, 19, 20, 21, 22, 23, 24, 25, 26, 27, 28, 29, 30} with the combined HR of 1.66(95% CI 1.41-1.94, $P < 0.0001$) (Fig 2). Some evidence of statistical heterogeneity (Cochran $Q = 23.00$, $p = 0.08$; $I^2 = 35\%$) was found by pooled effect size, which might be in part attributable to 1 randomized controlled trial. Subgroup analysis found no significant associations of SDB with reported relative risk of MACCEs for different levels of SDB severity, follow-up time, whether operate on myocardial ischemia. (Table 3) There was some evidence of bias (Egger intercept = -0.0631, $p < 0.0001$) (Fig 5).

3.3 All-cause mortality

Six studies reported an increased Hazard ratio (HR) of all-cause mortality with SDB compared

with controls in patients with myocardial ischemia,^{13, 17, 26, 29, 30, 31} with the pooled HR of 1.39(95% CI 1.12-1.73, $p=0.0027$) (Fig 3). There was no obvious statistical heterogeneity (Cochran $Q = 7.27$, $p=0.2$; $I^2 = 31\%$), and no evidence of bias (Egger intercept = 0.8883, $p = 0.2548$).

3.4 Cardiovascular mortality

Five studies reported the increased Hazard ratio (HR) of cardiovascular mortality,^{13, 19, 21, 27, 30} with the pooled HR of 2.12(95% CI 1.23-3.65, $p=0.007$) (Fig4). There was no significant evidence of statistical heterogeneity (Cochran $Q = 6.49$, $p = 0.165$; $I^2 = 38.4\%$), and no evidence of bias (Egger intercept = 0.3260, $p = 0.6848$).

4. Discussion

These results suggest that SDB is relevant to the increased major adverse cardiovascular or cerebrovascular events in patients with myocardial ischemia. This is consistent with an observational study showing that sleep apnea is associated with the increase in the risk of cardiovascular events.³² In addition, in 2017, a meta-analysis showed that OSA was closely associated with a rising risk of cardiovascular events in patients underwent PCI.³³ OSA also was an important risk factor for major adverse cardiac or cerebrovascular events in patients undergoing cardiac surgery.³⁴ Our results show that OSA increases adverse cardiovascular outcomes in patients with myocardial ischemia at large and not just limited to patients undergoing surgery (PCI/CABG).

The present study also shows that SDB is associated with all-cause mortality and cardiovascular death risk in patients with myocardial ischemia, and the increase of cardiovascular mortality may be related to the comorbidities of cardiovascular disease including hypertension, diabetes and dyslipidaemia. A meta-analysis concluded that bariatric surgery can reduce all cause long-term

mortality, cardiovascular mortality and development of ischemic heart disease to some extent.³⁵

We all known that obesity is an important risk factor for OSA, and our study cannot rule out the influence of obesity-related diseases on adverse cardiovascular outcomes.

A small sample of study suggested that CPAP treatment could alleviate MACCEs.²⁶ Nevertheless, a large meta-analysis of CPAP, the preferred treatment for sleep apnea, has shown that it does not reduce the risk of cardiovascular outcomes.¹¹ At the same time, a meta-analysis indicated that adequate CPAP treatment (defined as at least 4 h/d) compared with usual care alone have an positive impact on the MACCEs in patients with OSA, but stratified analysis showed that CPAP use is associated with the reduction of cerebrovascular adverse events and stroke, not cardiac outcomes.³⁶ The different effects of CPAP treatment on cardiac outcomes and cerebrovascular systems are consistent with a new result of an increased incidence of cerebrovascular circulation and stroke in older patients with sleep apnea, but not the prevalence of coronary heart disease.³⁷ In 2020, a randomized controlled study showed that OSA with usual care alone compared with patients without OSA was not associated with the prevalence of cardiovascular events in patients with ACS, and CPAP treatment did not reduce the prevalence of cardiovascular outcomes or death.¹² Although CPAP therapy may have other benefits, the present findings suggest that CPAP treatment is not supported for the prevention of the adverse cardiac outcomes. Thus, more large, prospective, multicenter studies are needed to further validate the association between SDB and MACCEs in patients with ischemic heart disease in the future, especially to distinguish cardiac and cerebrovascular adverse events.

However, our study showed that SDB increased MACCEs, all-cause mortality and cardiovascular mortality, but not distinguish between cardiac and cerebrovascular adverse events. After excluding

this randomized controlled trial, the forest plot results showed no statistical heterogeneity by the pooled effect size. Studies have shown a decrease in in-hospital mortality in patients with ST elevation myocardial infarction with recognized OSA compared with patients without OSA, but there was no difference in incidence of in-hospital cardiac arrest.³⁸ Shah et al. showed that OSA patients with acute MI have fewer severe cardiac compared to patients without OSA, possibly due to the cardioprotective effect of sleep apnea during acute myocardial infarction via ischemic preconditioning.³⁹ Also, Chang et al. have shown that intermittent hypoxic (IH) preconditioning can improve the heart injury caused by ischemia/reperfusion.⁴⁰ However, Du et al. demonstrated that MI+CIH OSA can aggravate cardiac remodeling and decrease the survival rate of mice.¹⁴ Hence, whether SDB occurs before or after myocardial ischemia may have a certain influence on the outcomes.

Wu et al. found that untreated moderate to severe OSA had an increased risk of repeat revascularization compared with the OSA treated with CPAP group, but no significant in MACCEs and MACEs.⁴¹ Two studies compared the major adverse events of severe OSA to non-severe OSA in patients with myocardial ischemia, which showed a negative prognostic impact.^{17,}²⁰ Therefore, there may be a dose-response relationship between the severity of OSA and the adverse prognostic outcomes of CHD.

The limitations of our study: the studies we included did not indicate whether OSA patients were treated with CPAP, and patients with other complications or non-first visit for CHD, which could have some impact on outcomes, but the included literature did not clearly indicate this. And the diagnostic criteria for sleep apnea of part literatures are different, with sleep apnea was defined as an AHI ≥ 15 events/h, or was defined as an AHI ≥ 5 events/h, or even was defined as an AHI ≥ 10

events/h, as well as the severity of ischemic heart disease and whether undergoing surgery (PCI/CABG), not distinguish between OSA and CSA, which may be the possible causes of heterogeneity. In addition, the sleep studies were conducted with polysomnography or portable monitoring device, and questionnaires and a home-based sleep study were excluded, so our study may not be widely representative of the population.

One limitation of our study was that the HR of the included literatures was mostly adjusted, while some literatures were not adjusted, but it was difficult to be further unified. In addition, the screen of SDB into our included studies of patients with ischemic heart disease has proved difficult in some cases, particularly when the sleep apnea was diagnosed in an untimely manner. Patients diagnosed with SDB after IHD were selected, but it is difficult to determine whether these patients were previously free of SDB, especially when the latency between coronary heart disease and sleep apnea tests varied significantly in one study, which may account for some of the differences in clinical outcomes. Moreover, there was statistical evidence for publication bias, and part of the single-center study may have a certain degree of bias. Some negative results were not published, which could be the partly possible reason for our results. Therefore, future studies are needed to verify the conclusion.

5.Conclusion

Our results indicate that SDB was associated with the risk of MACCEs, all-cause mortality, and cardiovascular mortality in patients with ischemic heart disease, but the distinguish of cardiac and cerebrovascular adverse events needs to be further studied. Routine screening of sleep apnea in patients with myocardial ischemia may serve as a secondary prevention strategy to reduce the risk of major adverse cardiovascular and cerebrovascular outcomes. The further studies may best be

achieved through increased collaboration among the cardiology, sleep medicine, and clinical trial communities. Also, more high-quality and rigorous researches are needed to avoid publication bias and validate the results.

Acknowledgements

This research was funded by National Natural Science Foundation of China (Grant No.81970085 and 81670086), the Tianjin Science and Technology Plan Project (Grant No. 17ZXMFSY00080).

Author contributions

Concept and design: Yaodan Zhang, Qiang Zhang, Jin Tan. Acquisition, analysis, or interpretation of data: Yaodan Zhang, Jin Tan, Qiang Zhang. Drafting of the manuscript: Yaodan Zhang. Software and Statistical analysis: Yaodan Zhang. Language modification and guidance: Yuyang Miao. All authors confirmed the final version of the manuscript for submission.

Conflict of interest

The authors declare no conflict of interest.

Ethics statement

Not Applicable.

Funding information

National Natural Science Foundation of China (Grant No.81970085 and 81670086). The Tianjin Science and Technology Plan Project (Grant No. 17ZXMFSY00080).

1. Heinzer R, Vat S, Marques-Vidal P, Marti-Soler H, Andries D, Tobback N, *et al.*
Prevalence of sleep-disordered breathing in the general population: the HypnoLaus study.
The Lancet Respiratory medicine. 2015; **3**: 310-318.
2. Jonas DE, Amick HR, Feltner C, Weber RP, Arvanitis M, Stine A, *et al.* Screening for

- Obstructive Sleep Apnea in Adults: Evidence Report and Systematic Review for the US Preventive Services Task Force. *JAMA*. 2017; **317**: 415-433.
3. Seiler A, Camilo M, Korostovtseva L, Haynes AG, Brill AK, Horvath T, *et al*. Prevalence of sleep-disordered breathing after stroke and TIA: A meta-analysis. *Neurology*. 2019; **92**: e648-e654.
 4. Dong J-Y, Zhang Y-H, Qin L-Q. Obstructive sleep apnea and cardiovascular risk: meta-analysis of prospective cohort studies. *Atherosclerosis*. 2013; **229**: 489-495.
 5. Schiza SE, Simantirakis E, Bouloukaki I, Mermigkis C, Kallergis EM, Chrysostomakis S, *et al*. Sleep disordered breathing in patients with acute coronary syndromes. *Journal of clinical sleep medicine : JCSM : official publication of the American Academy of Sleep Medicine*. 2012; **8**: 21-26.
 6. Buchner S, Greimel T, Hetzenecker A, Luchner A, Hamer OW, Debl K, *et al*. Natural course of sleep-disordered breathing after acute myocardial infarction. *Eur Respir J*. 2012; **40**: 1173-1179.
 7. Hung J, Whitford EG, Parsons RW, Hillman DR. Association of sleep apnoea with myocardial infarction in men. *Lancet*. 1990; **336**: 261-264.
 8. Le Grande MR, Beauchamp A, Driscoll A, Jackson AC. Prevalence of obstructive sleep apnoea in acute coronary syndrome patients: systematic review and meta-analysis. *BMC Cardiovasc Disord*. 2020; **20**: 147.
 9. Guo J, Sun Y, Xue L-J, Huang Z-Y, Wang Y-S, Zhang L, *et al*. Effect of CPAP therapy on cardiovascular events and mortality in patients with obstructive sleep apnea: a meta-analysis. *Sleep & breathing = Schlaf & Atmung*. 2016; **20**: 965-974.

10. Drager LF, McEvoy RD, Barbe F, Lorenzi-Filho G, Redline S. Sleep Apnea and Cardiovascular Disease: Lessons From Recent Trials and Need for Team Science. *Circulation*. 2017; **136**: 1840-1850.
11. Yu J, Zhou Z, McEvoy RD, Anderson CS, Rodgers A, Perkovic V, *et al*. Association of Positive Airway Pressure With Cardiovascular Events and Death in Adults With Sleep Apnea: A Systematic Review and Meta-analysis. *JAMA*. 2017; **318**: 156-166.
12. Sánchez-de-la-Torre M, Sánchez-de-la-Torre A, Bertran S, Abad J, Duran-Cantolla J, Cabriada V, *et al*. Effect of obstructive sleep apnoea and its treatment with continuous positive airway pressure on the prevalence of cardiovascular events in patients with acute coronary syndrome (ISAACC study): a randomised controlled trial. *The Lancet Respiratory Medicine*. 2020; **8**: 359-367.
13. Lee CH, Sethi R, Li R, Ho HH, Hein T, Jim MH, *et al*. Obstructive Sleep Apnea and Cardiovascular Events After Percutaneous Coronary Intervention. *Circulation*. 2016; **133**: 2008-2017.
14. Du Y, Wang X, Li L, Hao W, Zhang H, Li Y, *et al*. miRNA-Mediated Suppression of a Cardioprotective Cardiokine as a Novel Mechanism Exacerbating Post-MI Remodeling by Sleep Breathing Disorders. *Circ Res*. 2020; **126**: 212-228.
15. Moher D, Liberati A, Tetzlaff J, Altman DG, Group P. Preferred reporting items for systematic reviews and meta-analyses: the PRISMA statement. *PLoS Med*. 2009; **6**: e1000097.
16. Nakashima H, Kurobe M, Minami K, Furudono S, Uchida Y, Amenomori K, *et al*. Effects of moderate-to-severe obstructive sleep apnea on the clinical manifestations of plaque

- vulnerability and the progression of coronary atherosclerosis in patients with acute coronary syndrome. *Eur Heart J Acute Cardiovasc Care*. 2015; **4**: 75-84.
17. Won CH, Chun HJ, Chandra SM, Sarinas PS, Chitkara RK, Heidenreich PA. Severe obstructive sleep apnea increases mortality in patients with ischemic heart disease and myocardial injury. *Sleep Breath*. 2013; **17**: 85-91.
18. Yatsu S, Naito R, Kasai T, Matsumoto H, Shitara J, Shimizu M, *et al*. Influence of sleep-disordered breathing assessed by pulse oximetry on long-term clinical outcomes in patients who underwent percutaneous coronary intervention. *Clinical research in cardiology : official journal of the German Cardiac Society*. 2018; **107**: 711-718.
19. Mooe T, Franklin KA, Holmström K, Rabben T, Wiklund U. Sleep-disordered breathing and coronary artery disease: long-term prognosis. *American journal of respiratory and critical care medicine*. 2001; **164**: 1910-1913.
20. Lee CH, Khoo SM, Chan MY, Wong HB, Low AF, Phua QH, *et al*. Severe obstructive sleep apnea and outcomes following myocardial infarction. *Journal of clinical sleep medicine : JCSM : official publication of the American Academy of Sleep Medicine*. 2011; **7**: 616-621.
21. Liu B, Guo R, Zhou S, Xie S, Wang K, Xu Y. Effects of obstructive sleep apnea on cardiac function and clinical outcomes in Chinese patients with ST-elevation myocardial infarction. *TheScientificWorldJournal*. 2014; **2014**: 908582.
22. Loo G, Tan AY, Koo CY, Tai BC, Richards M, Lee CH. Prognostic implication of obstructive sleep apnea diagnosed by post-discharge sleep study in patients presenting with acute coronary syndrome. *Sleep medicine*. 2014; **15**: 631-636.

23. Leão S, Conde B, Fontes P, Calvo T, Afonso A, Moreira I. Effect of Obstructive Sleep Apnea in Acute Coronary Syndrome. *Am J Cardiol.* 2016; **117**: 1084-1087.
24. Mazaki T, Kasai T, Yokoi H, Kuramitsu S, Yamaji K, Morinaga T, *et al.* Impact of Sleep-Disordered Breathing on Long-Term Outcomes in Patients With Acute Coronary Syndrome Who Have Undergone Primary Percutaneous Coronary Intervention. *Journal of the American Heart Association.* 2016; **5**.
25. Zhang JJ, Gao XF, Ge Z, Jiang XM, Xiao PX, Tian NL, *et al.* Obstructive sleep apnea affects the clinical outcomes of patients undergoing percutaneous coronary intervention. *Patient preference and adherence.* 2016; **10**: 871-878.
26. Lin MT, Lai CL, Lee PL, Shen MH, Yu CJ, Fang CT, *et al.* Timely diagnosis and treatment of sleep apnea reduce cardiovascular sequelae in patients with myocardial infarction. *PloS one.* 2018; **13**: e0201493.
27. Fan J, Wang X, Ma X, Somers VK, Nie S, Wei Y. Association of Obstructive Sleep Apnea With Cardiovascular Outcomes in Patients With Acute Coronary Syndrome. *Journal of the American Heart Association.* 2019; **8**: e010826.
28. Zeng Y, Yang S, Wang X, Fan J, Nie S, Wei Y. Prognostic impact of residual SYNTAX score in patients with obstructive sleep apnea and acute coronary syndrome: a prospective cohort study. *Respiratory research.* 2019; **20**: 43.
29. He CJ, Cao LF, Zhu CY, Dai XC, Yu YY, Zhu YJ, *et al.* Association Between Obstructive Sleep Apnea-Hypopnea Syndrome and Outcomes in Patients With Myocardial Infarction in the Absence of Obstructive Coronary Artery Disease. *Frontiers in cardiovascular medicine.* 2020; **7**: 573819.

30. Koo CY, Aung AT, Chen Z, Kristanto W, Sim HW, Tam WW, *et al.* Sleep apnoea and cardiovascular outcomes after coronary artery bypass grafting. *Heart (British Cardiac Society)*. 2020; **106**: 1495-1502.
31. Valham F, Mooe T, Rabben T, Stenlund H, Wiklund U, Franklin KA. Increased risk of stroke in patients with coronary artery disease and sleep apnea: a 10-year follow-up. *Circulation*. 2008; **118**: 955-960.
32. Somers VK, White DP, Amin R, Abraham WT, Costa F, Culebras A, *et al.* Sleep apnea and cardiovascular disease: an American Heart Association/American College of Cardiology Foundation Scientific Statement from the American Heart Association Council for High Blood Pressure Research Professional Education Committee, Council on Clinical Cardiology, Stroke Council, and Council on Cardiovascular Nursing. *J Am Coll Cardiol*. 2008; **52**: 686-717.
33. Zhao Y, Yu BY, Liu Y, Liu Y. Meta-Analysis of the Effect of Obstructive Sleep Apnea on Cardiovascular Events After Percutaneous Coronary Intervention. *Am J Cardiol*. 2017; **120**: 1026-1030.
34. Nagappa M, Ho G, Patra J, Wong J, Singh M, Kaw R, *et al.* Postoperative Outcomes in Obstructive Sleep Apnea Patients Undergoing Cardiac Surgery: A Systematic Review and Meta-analysis of Comparative Studies. *Anesth Analg*. 2017; **125**: 2030-2037.
35. Wiggins T, Guidozzi N, Welbourn R, Ahmed AR, Markar SR. Association of bariatric surgery with all-cause mortality and incidence of obesity-related disease at a population level: A systematic review and meta-analysis. *PLoS Med*. 2020; **17**: e1003206.
36. Javaheri S, Martinez-Garcia MA, Campos-Rodriguez F, Muriel A, Peker Y. Continuous

- Positive Airway Pressure Adherence for Prevention of Major Adverse Cerebrovascular and Cardiovascular Events in Obstructive Sleep Apnea. *American journal of respiratory and critical care medicine*. 2020; **201**: 607-610.
37. Catalan-Serra P, Campos-Rodriguez F, Reyes-Nunez N, Selma-Ferrer MJ, Navarro-Soriano C, Ballester-Canelles M, *et al*. Increased Incidence of Stroke, but Not Coronary Heart Disease, in Elderly Patients With Sleep Apnea. *Stroke*. 2019; **50**: 491-494.
38. Mohananev D, Villablanca PA, Gupta T, Agrawal S, Faulx M, Menon V, *et al*. Recognized Obstructive Sleep Apnea is Associated With Improved In-Hospital Outcomes After ST Elevation Myocardial Infarction. *Journal of the American Heart Association*. 2017; **6**.
39. Shah N, Redline S, Yaggi HK, Wu R, Zhao CG, Ostfeld R, *et al*. Obstructive sleep apnea and acute myocardial infarction severity: ischemic preconditioning? *Sleep Breath*. 2013; **17**: 819-826.
40. Chang JC, Lien CF, Lee WS, Chang HR, Hsu YC, Luo YP, *et al*. Intermittent Hypoxia Prevents Myocardial Mitochondrial Ca(2+) Overload and Cell Death during Ischemia/Reperfusion: The Role of Reactive Oxygen Species. *Cells*. 2019; **8**.
41. Wu X, Lv S, Yu X, Yao L, Mokhlesi B, Wei Y. Treatment of OSA reduces the risk of repeat revascularization after percutaneous coronary intervention. *Chest*. 2015; **147**: 708-718.

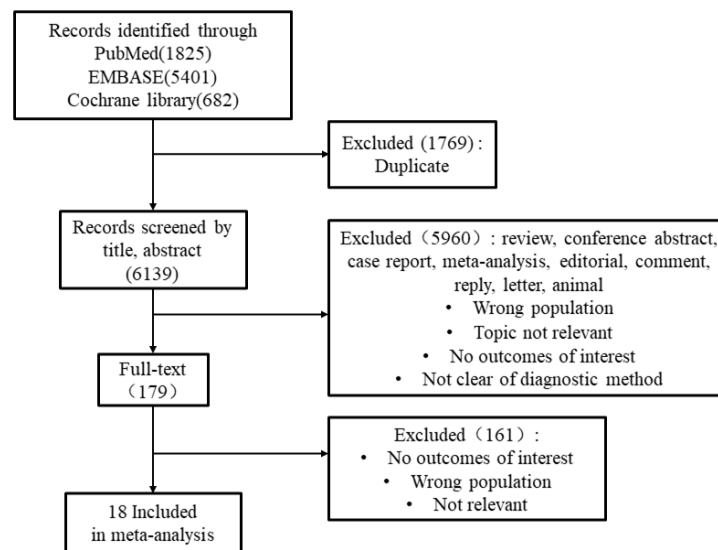


Fig 1. Detailed flow chart of literature search.

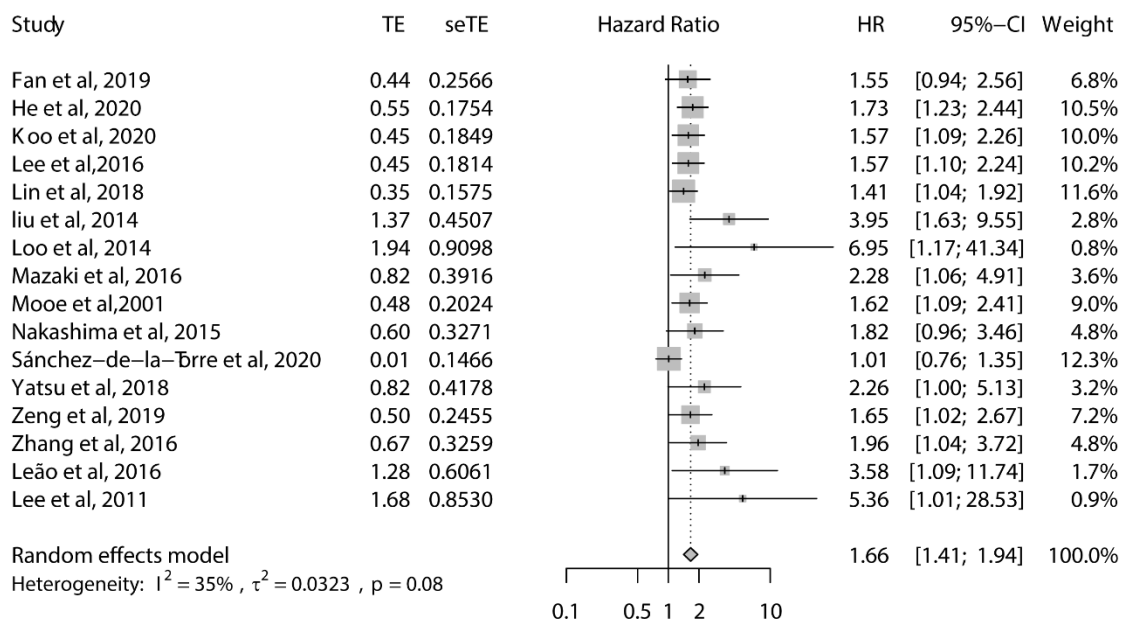


Fig 2. Forest plot of the association of sleep-disordered breathing with major adverse

cardiovascular or cerebrovascular events and deaths.(pooled hazard ratio 1.66, 95% CI 1.41 to 1.94, $P < 0.0001$)

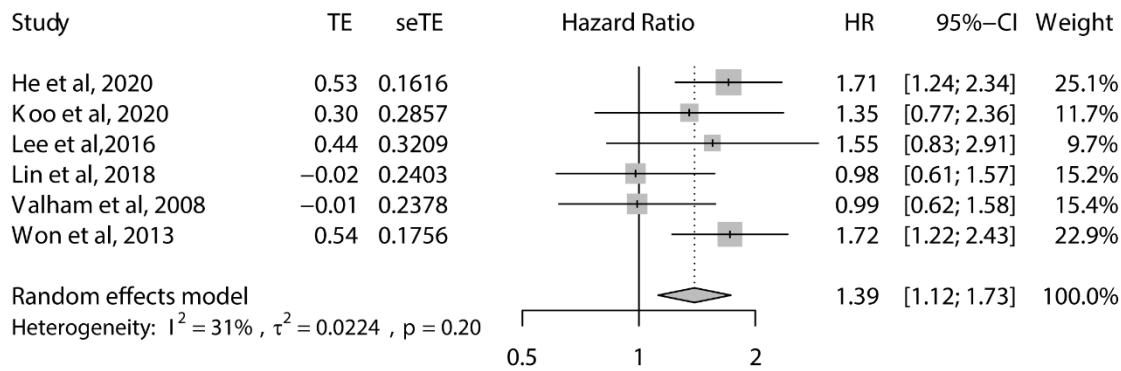


Fig 3. Forest plot of the association of sleep-disordered breathing with all-cause mortality (pooled hazard ratio 1.39, 95% CI 1.12 to 1.73, $P=0.0027$).

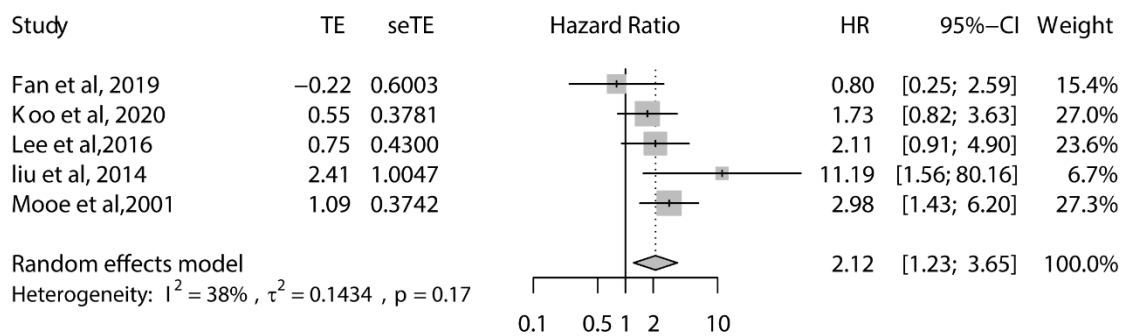


Fig 4. Forest plot of the association of sleep-disordered breathing with cardiovascular mortality (pooled hazard ratio 2.12, 95% CI 1.23 to 3.65, $P=0.007$).

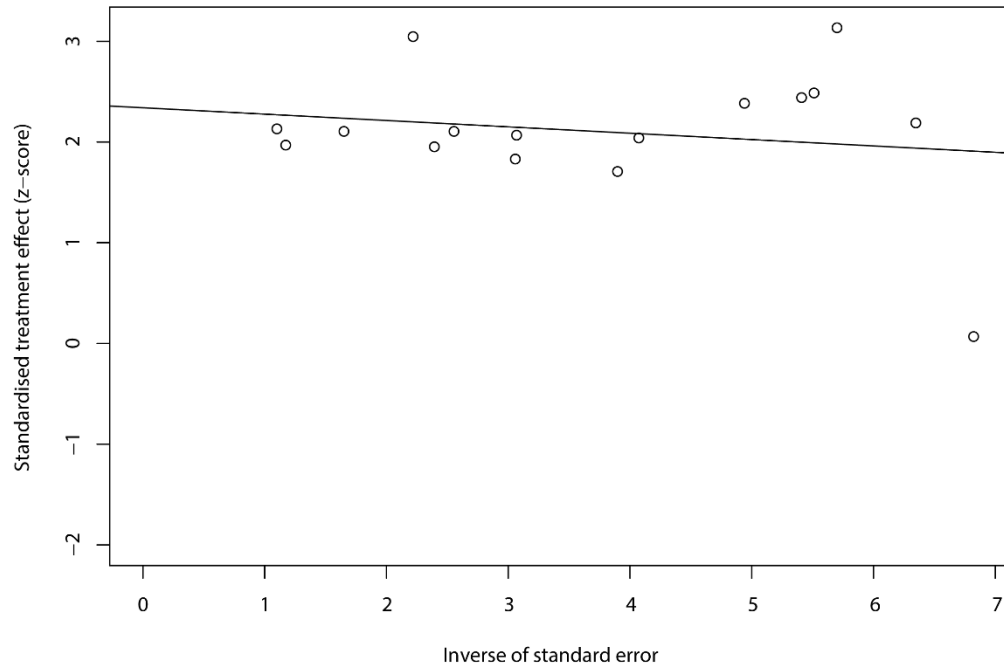


Fig 5. The Egger Funnel plot of included studies' effect sizes on major adverse cardiovascular or cerebrovascular events and deaths.

Study	Number of patients		AHI (events per hour)		Males sex, n (%)		Mean ± SD or median (range)				Mean BMI ± SD (kg/m ²)		Smoker, n (%)	
	SDB	NO-SDB	Mean ±SD or median (IQR)		SDB	NO-SDB	age (years)		SDB	NO-SDB	SDB	NO-SDB	SDB	NO-SDB
			SDB	NO-SDB			SDB	NO-SDB						
Fan et.al	403	401	31.2(21.8–43.8)	7.4 (3.8–10.6)	342(84.9)	322(80.3)	57.7±10.2	57.2±10.2	27.7±3.5	25.8±3.4	-	-	-	-
He et al.	158	425	29.0±12.2	5.3±4.2	96(60.8)	157(36.9)	64.5 ± 12.9	63.4±12.7	24.9±3.6	23.7±3.8	52(32.9)	97(22.8)	-	-
Koo et al.	513	494	30.1(20.6–44.7)	5.85(3.0–10.23)	442(86.2)	429(86.8)	62(56–68)	61(56–67)	-	-	139(27.1)	155(31.4)	-	-
Lee et al.	594	717	28.9(21.1)	5.9(7.1)	523(88.1)	594(82.9)	59.0(10.2)	57.5(10.3)	26.6(3.9)	25.0 (3.4)	210(35.4)	255(35.6)	-	-
Lin et al	93	465	-	-	79(85)	385(83)	63±12	64±13	-	-	-	-	-	-
Iiu et al.	89	109	-	-	61 (68.5)	71(65.1)	61.45±7.30	61.57 ± 7.25	28.8±4.5	24.6±3.1	-	-	-	-
Loo et al.	24	44	24.0(16.9–52.0)	4.9 (0.3–14.9)	18(75.0)	41(93.2)	56.7(5.6)	52.8(10.0)	27.5(3.9)	24.4(3.3)	4(16.7)	28 (63.6)	-	-
Mazaki et al.	126	115	13.5(15.3)	2.1(2.2)	69(78)	66 (75)	63±13	63±12	24.7±3.8	24.4±3.5	-	-	-	-
Moore et al.	133	259	-	-	-	-	-	-	-	-	-	-	-	-
Nakashima et al.	124	148	-	-	96 (77)	108 (73)	71(61–78)	65(56–75)	-	-	-	-	-	-
Sánchez-de-la-Torre et al.	626	596	35.5(18.3)	-	530 (85)	-	60.7(10%)	-	29.4(4.29)	-	291(47)	-	-	-
Valham et al.	211	181	-	-	73(35)	60(33)	60.7±7.0	59.3±7.8	27.3±3.7	26.8±3.3	-	-	-	-
Won et al.	130	151	51±17	15±11	127(97.7)	147(97.3)	65.6±11	64.6±11	35.4±8	32.9±8	-	-	-	-
Yatsu et al.	296	243	-	-	259 (87.5)	196(80.7)	68.2±11.5	66.2 ± 10.7	25.5±3.9	23.7±3.1	-	-	-	-
Zeng et al.	373	379	33.7±15.1	7.1±4.0	315(84.5)	306(80.7)	57.6 ± 10.4	56.8 ± 10.0	27.6 ± 3.4	25.8 ± 3.3	-	-	-	-
Zhang et al.	152	188	30.9 (21.8, 43.5)	8.4 (3.9, 11.9)	120 (78.9)	129 (68.6)	65.6±10.3	64.0±10.4	25.4±2.9	24.5±3.1	-	-	-	-
Leão et al.	46	27	30.6 ± 23.0	2.3 ± 3.2	38 (83%)	17 (63%)	63.5 ± 10.3	60.6 ± 12.7	27.8 ± 3.8	27.2 ± 3.4	8 (17%)	5 (18%)	-	-
Lee et al.	44	61	-	-	43 (97.7)	60 (98.4)	55.2 (11.0)	50.9 (8.5)	26.1 (3.4)	24.0 (2.9)	24 (54.6)	37 (60.7)	-	-

IQR, interquartile range

Table 1. Patient demographics of included studies.

Study	Nation or region of origin	Included study dates	Inclusion criteria	Median follow up(months)	MACCE CI	HR(95% All-cause mortality HR(95% CI)	Cardiovascular mortality risk HR(95% CI)
Fan et al, 2019	china	2015-2017	ACS	24	1.55(0.94–2.57)	-	0.80 (0.25–2.63)
He et al, 2020	china	2015-2016	MI	36	1.733(1.201–2.389)	1.706(1.286 –2.423)	
Koo et al, 2020	Singapore	2013-2018	CABG	25	1.57(1.09 – 2.25)	1.35(0.77 – 2.36)	1.73 (0.82- 3.61)
Lee et al,2016	Singapore, China, Brazil, Myanmar, India	2011-2014	PCI	23	1.57(1.10–2.24)	1.55(0.83–2.92)	2.11 (0.91–4.91)
Lin et al, 2018	taiwan	2000-2012	MI	50	1.412(1.037-1.923)	0.980(0.612-1.570)	
liu et al, 2014	china	2012-2013	STEMI	24	3.946(1.631–9.544)	-	11.189 (1.562–80.177)
Loo et al, 2014	Singapore	2011-2012	PCI	24	6.95(1.17–41.4)	-	
Mazaki et al, 2016	Japan	2005-2008	PCI	67	2.28(1.06–4.92)	-	
Moore et al,2001	Sweden	1992-1995	Coronary disease	61	1.62(1.09–2.41)	-	2.98 (1.43–6.20)
Nakashima et al, 2015	Japan	2003-2009	MI	50	1.82(0.96–3.46)	-	
Sánchez-de-la-Torre et al, 2020	Spain	-	ACS	40	1.01(0.76–1.35)	-	
Valham et al, 2008	Sweden	1992-1995	Coronary disease	120	-	0.99(0.63–1.60)	
Won et al, 2013	USA	2000-2007	Ischemic Heart Disease	49	-	1.72(1.01–2.01)	
Yatsu et al, 2018	Japan	2014-2016	PCI	22	2.26(1.05–5.40)	-	
Zeng et al, 2019	china	2015-2017	ACS	12	1.65(1.02, 2.67)	-	
Zhang et al, 2016	china	2012-2014	PCI	24	1.962(1.036, 3.717)	-	
Leão et al, 2016	Portugal	-	ACS	75	3.58(1.09-11.73)		
Lee et al, 2011	Singapore	2007-2008	PCI	18	5.361(1.007 - 28.525)		

percutaneous coronary intervention (PCI), Myocardial infarction (MI), acute coronary syndrome (ACS)

Table 2. Outcomes of included studies assessing the effect of sleep-disordered breathing on the prognosis of ischemia heart disease.

Subgroup	Number of studies	HR(95%CI)	Heterogeneity
All studies	16	1.66(1.41-1.94)	I ² =35%, τ ² =0.0323, p=0.08
Degree	9	1.56(1.27-1.92)	I ² =42%, τ ² =0.0379, p=0.09
severe	6	1.50(1.14-1.96)	I ² =47%, τ ² =0.0491, p=0.09
moderate	3	1.72(1.27-2.33)	I ² =23%, τ ² =0.0181, p=0.27
Median follow up			
1-2year	8	1.89(1.48-2.41)	I ² =15%, τ ² =0.0190, p=0.31
more than 2years	8	1.52(1.25-1.85)	I ² =40%, τ ² =0.0296, p=0.11
Study types	14	1.64(1.38-1.95)	I ² =40%, τ ² =0.0381, p=0.06
cohort study	13	1.68(1.47-1.92)	I ² =0%, τ ² =0, p=0.46
randomised controlled trial	1	1.01(0.76-1.35)	-
Surgery			
no	9	1.58(1.28-1.96)	I ² =48%, τ ² =0.0458, p=0.05
yes	7	1.77(1.43-2.19)	I ² =0%, τ ² =0, p=0.46

Table 3. Association of sleep-disordered breathing with cardiovascular outcomes and deaths in trial subgroups.

Search strategy

PubMed (from their respective inceptions to February 22, 2021)

Search number	Search description	Number of results
#1	"Myocardial Ischemia"[Mesh]	
#2	(Myocardial Ischemia*[Title/Abstract]) OR (Ischemic Heart Disease*[Title/Abstract]) OR (Coronary Arterioscleros*[Title/Abstract]) OR (Coronary Atheroscleros*[Title/Abstract]) OR (Coronary Disease*[Title/Abstract]) OR (Coronary Heart Disease*[Title/Abstract]) OR (Myocardial Infarct*[Title/Abstract]) OR (Cardiovascular Stroke*[Title/Abstract]) OR (Heart Attack*[Title/Abstract])	
#3	(#1 OR #2)	534,465
#4	"Sleep Apnea Syndromes"[Mesh]	
#5	(Sleep Apnea*[Title/Abstract]) OR (Sleep Apnoea*[Title/Abstract]) OR (Sleep Hypopnea*[Title/Abstract]) OR (Sleep Hypopnoea*[Title/Abstract]) OR (Hypersomnia with Periodic Respiration[Title/Abstract]) OR (Hypoventilation[Title/Abstract]) OR (Sleep Disorder*[Title/Abstract]) OR (OSAHs[Title/Abstract]) OR (OSAS[Title/Abstract]) OR (SAS[Title/Abstract]) OR (OSA[Title/Abstract])	
#6	(#4 OR #5)	77,455

#7	(#3 AND #6)	1825
----	-------------	------

EMBASE (from their respective inceptions to February 22, 2021)

#1 'sleep disordered breathing'/exp

#2 'sleep apn?ea*':ab,ti OR 'sleep apnea*':ab,ti OR 'sleep hypopn?ea*':ab,ti OR 'sleep hypopnea*':ab,ti OR 'hypersomnia with periodic respiration':ab,ti OR hypoventilation:ab,ti OR 'sleep disorder*':ab,ti OR osahs:ab,ti OR osas:ab,ti OR sas:ab,ti OR osa:ab,ti

#3 #1 OR #2

AND

#4 'heart muscle ischemia'/exp

#5 'myocardial ischemia*':ab,ti OR 'ischemic heart disease*':ab,ti OR 'coronary arterioscleros*':ab,ti OR 'coronary atheroscleros*':ab,ti OR 'coronary disease*':ab,ti OR 'coronary heart disease*':ab,ti OR 'coronary artery disease*':ab,ti OR 'myocardial infarct*':ab,ti OR 'cardiovascular stroke*':ab,ti OR 'heart attack*':ab,ti

#6 #4 OR #5

#3 AND #6

Cochrane (from their respective inceptions to February 22, 2021)

#1 MeSH descriptor: [Myocardial Ischemia] explode all trees

#2 (Myocardial Ischemia*):ti,ab,kw OR (Ischemic Heart Disease*):ti,ab,kw OR (Coronary Arterioscleros*):ti,ab,kw OR (Coronary Atheroscleros*):ti,ab,kw OR (Coronary Disease*):ti,ab,kw

#3 (Coronary Heart Disease*):ti,ab,kw OR (coronary artery disease*):ti,ab,kw OR (Myocardial Infarct*):ti,ab,kw OR (Cardiovascular Stroke*):ti,ab,kw OR (Heart Attack*):ti,ab,kw

#4 #1 OR #2 OR #3

#5 MeSH descriptor: [Sleep Apnea Syndromes] explode all trees

#6 (Sleep Apnea*):ti,ab,kw OR (Sleep Apnoea*):ti,ab,kw OR (Sleep Hypopnea*):ti,ab,kw OR (Sleep Hypopnoea*):ti,ab,kw OR (Hypersomnia with Periodic Respiration):ti,ab,kw

#7 (Hypoventilation):ti,ab,kw OR (Sleep Disorder*):ti,ab,kw OR (OSAHS):ti,ab,kw OR (OSAS):ti,ab,kw OR (SAS):ti,ab,kw

#8 (OSA):ti,ab,kw

#9 #5 OR #6 OR #7 OR #8

#10 #4 AND #9

Appendix 1. Search strategy.

Source	Representativeness of the cohort	Selection of the exposed nonexposed cohort	of Ascertainment of exposure	Demonstration that interest was present of study	Comparability of cohorts on the basis of the design or analysis	Assessment of outcome or	Was long enough for to occur	follow-up Adequacy of follow-up cohorts	Total scores
Fan et al, 2019	1	1	1	1	2	1	1	1	9
He et al, 2020	1	1	1	1	2	1	1	1	9
Koo et al, 2020	1	1	1	1	2	1	1	1	9
Lee et al, 2016	1	1	1	1	2	1	0	1	8
Lin et al, 2018	1	1	1	0	0	1	1	1	6
liu et al, 2014	1	1	1	0	0	0	1	1	5
Loo et al, 2014	1	1	1	1	2	1	0	1	8
Mazaki et al, 2016	1	1	1	1	2	1	1	1	9
Moore et al, 2001	1	1	0	0	2	1	1	1	7
Nakashima et al, 2015	1	0	1	1	0	1	1	1	6
Sánchez-de-la-Torre et al, 2020	-	-	-	-	-	-	-	-	-
Valham et al, 2008	1	1	1	1	2	1	1	1	9
Won et al, 2013	1	0	1	1	0	0	1	1	5
Yatsu et al, 2018	1	1	0	1	2	1	1	1	8
Zeng et al, 2019	1	1	1	1	2	1	0	1	8
Zhang et al, 2016	1	1	1	1	2	0	1	1	8
Leão et al, 2016	1	0	0	1	2	1	1	1	7
Lee et al, 2011	1	0	0	1	2	1	1	1	7

Appendix 2. Quality assessment (Newcastle-Ottawa Scale).