

1 **Patients treated with anti-CD20 therapy can mount robust T cell responses**
2 **to mRNA-based COVID-19 vaccines**

3

4 Natacha Madelon¹, Kim Lauper², Gautier Breville³, Irène Sabater Royo¹, Rachel Goldstein¹,
5 Diego O. Andrey⁴, Alba Grifoni⁵, Alessandro Sette^{5,6}, Claire-Anne Siegrist^{1,7#}, Axel Finckh²,
6 Patrice H. Lalive^{1,3}, Arnaud M. Didierlaurent^{1#}, Christiane S. Eberhardt^{1,7,8#}

7

8 ¹Center for vaccinology, Department of Pathology and Immunology; ² Department of
9 Medicine, Division of Rheumatology; ³Department of Neurosciences, Division of Neurology;

10 ⁴Department of Diagnostics, Division of Laboratory Medicine; University Hospital of Geneva
11 & Faculty of Medicine, University of Geneva, Geneva, Switzerland.

12 ⁵Center for Infectious Disease and Vaccine Research, La Jolla Institute for Immunology;

13 ⁶Department of Medicine, Division of Infectious Diseases and Global Public Health,
14 University of California, San Diego, La Jolla, USA

15 ⁷Center for Vaccinology and Department for Paediatrics, Geneva University Hospitals

16 ⁸Emory Vaccine Center, Emory University School of Medicine, Atlanta, USA

17

18 #: co-senior authorship and corresponding author

19 Arnaud Didierlaurent (Arnaud.didierlaurent@unige.ch) and Christiane S. Eberhardt
20 (Christiane.Eberhardt@unige.ch), Centre Médical Universitaire, rue Michel-Servet 1

21 1211 Genève 4 – Switzerland, +41 22 379 57 77

22

23

24

25 **ABSTRACT**

26 Patients treated with anti-CD20 therapy are particularly at risk of developing severe COVID-
27 19, however little is known regarding COVID-19 vaccine effectiveness in this population.
28 This study assesses humoral and T-cell responses to mRNA-based COVID-19 vaccines in
29 patients treated with rituximab for rheumatic diseases or ocrelizumab for multiple sclerosis
30 (n=37), compared to immunocompetent individuals (n=22). SARS-CoV-2-specific antibodies
31 were detectable in only 69.4% of patients and at levels that were significantly lower compared
32 to controls who all seroconverted. In contrast to antibodies, Spike (S)-specific CD4⁺ T cells
33 were equally detected in immunocompetent and anti-CD20 treated patients (85-90%) and
34 mostly of a Th1 phenotype. Response rates of S-specific CD8⁺ T cells were higher in
35 ocrelizumab (96.2%) and rituximab-treated patients (81.8%) as compared to controls (66.7%).
36 Vaccine-specific CD4⁺ and CD8⁺ T cells were polyfunctional but expressed more IL-2 in
37 patients than in controls. In summary, our study suggests that patients on anti-CD20 treatment
38 are able to mount potent T-cell responses to mRNA COVID-19 vaccines, despite impaired
39 humoral responses. This could play an important role in the prevention of severe COVID-19.

40

41 **INTRODUCTION**

42 In patients with immune-mediated rheumatic diseases (RD) and multiple sclerosis (MS),
43 immunosuppressive drugs and in particular anti-CD20 therapy are associated with an
44 increased risk of severe COVID-19 [1-3]. Although generally identified as priority groups for
45 vaccination, these patients were not included in pivotal studies evaluating the efficacy of
46 COVID-19 vaccines and their effectiveness in this population is still unknown. Anti-CD20
47 treatment depletes B cells and impairs antibody responses to classical vaccines [4-6]. Several
48 studies have now confirmed reduced antibody levels and seroconversion rates in anti-CD20
49 treated patients following SARS-CoV-2 infection [7] and COVID-19 vaccination, irrespective
50 of the underlying disease [8-11]. Although antibodies are likely to play a critical role in
51 preventing infection, recovery from COVID-19 in patients with X-linked
52 agammaglobulinemia suggests that antibodies are not mandatory to overcome disease [12]. T
53 cells may also be involved in protection against COVID-19 [12-14] and memory T cells are
54 readily detectable several months after infection [15]. As B cell could play a role as antigen-
55 presenting cells to naïve T cells, the question remains as whether B-cell depleted patients
56 could still mount a functional T cell response to COVID-19 vaccines, which may provide
57 some level of protection against severe disease.

58 The aim of our study was thus to characterise and compare T-cell response to mRNA-based
59 COVID-19 vaccines between patients with rheumatic diseases and multiple sclerosis treated
60 with anti-CD20 therapy and immunocompetent controls.

61 **RESULTS AND DISCUSSION**

62

63 In order to assess the effect of B cell depletion on vaccine-induced T cell response, we
64 studied a total of 37 patients treated with either ocrelizumab (n=26) for multiple sclerosis
65 (MS) or rituximab (n=11) for rheumatic diseases (RD) compared to 22 age-matched
66 immunocompetent controls (details see Table 1). Most patients with RD were treated for
67 rheumatoid arthritis (n=7) and had more co-morbidities compared to MS patients or controls.
68 Mean age was balanced between groups. Regarding concomitant medication, 5/11 RD
69 patients received another immunosuppressor (mainly methotrexate or corticosteroids), while
70 all MS patients were treated with ocrelizumab only. Hence, this cohort is likely to reflect the
71 effect of short- to long-term treatment with anti-CD20 on vaccine response in the absence of
72 other major confounding factors, in particular age and concomitant immunosuppressive drugs.
73 The interval between last anti-CD20 treatment and 1st vaccine dose was shorter in patients
74 under ocrelizumab (median 24.9 weeks) than in patients treated with rituximab (median 42
75 weeks), which explained the absence or low (<2 %) percentage of CD19+ B cells at time of
76 vaccination, especially in ocrelizumab-treated patients (Sup Fig 1). Most patients (34/37,
77 91.9%) and a majority of controls (15/22, 68.2%) had no history of SARS-COV-2 RT-PCR-
78 confirmed infection (review of medical record) prior to vaccination (Table 1) nor a positive
79 anti-nucleoprotein serology (measured 30 days after vaccination, Fig 1A).

80 Participants were vaccinated either with 2 doses of BNT162b2 (Pfizer/BioNTech; n=
81 13) or mRNA-1273 (Moderna, n=46) COVID-19 mRNA vaccine at 28 days interval (median
82 28 days, IQR=0). Immune responses were measured 30 days after the second dose and in a
83 subset of participants (n=20) at time of first vaccination (Sup Fig 2). Both mRNA vaccines
84 are able to elicit antibody and T cell responses in healthy individuals [16, 17]. As recently
85 reported by others [10, 11, 18] and as expected from experience with other vaccines, the level
86 of antibodies specific to the anti-receptor binding domain (RBD) of the SARS-CoV-2 spike
87 (S) protein was significantly lower in both anti-CD20 treated patient populations as compared
88 to controls, irrespective of the vaccine used (geometric mean: 5371 U/ml in controls, 69.3
89 U/ml in rituximab- and 8.3 U/ml in ocrelizumab-treated patient, Fig 1A). While all controls
90 had seroconverted 30 days after vaccination and regardless of their history of COVID-19,
91 significantly less anti-CD20 treated patients had detectable anti-RBD antibodies (p=001),
92 with a higher seropositivity rate in patients treated with rituximab (8/11; 72.7%) compared to
93 ocrelizumab (16/26; 61.5%). Those RD patients who did not have detectable antibody all

94 received concomitant treatment with methotrexate or corticosteroids. As expected, antibody
95 levels in patients correlated with level of circulating CD19+ B cells (measured at day 30 after
96 vaccination, Fig 1B), which were lower in patients on ocrelizumab due to a more recent
97 treatment. There was no correlation between age and antibody response. The three patients
98 with a known history of COVID-19 or with detectable anti-N antibodies did not have higher
99 antibody responses as compared to those unexposed (Fig 1A, Sup Fig 2A). This suggests that
100 on anti-CD20 treatment, previous exposure to SARS-CoV-2 does not provide an advantage in
101 terms of humoral vaccine response, in contrast to what we (Fig 1A) and others [19] observed
102 in immunocompetent individuals.

103 T-cell immunity against SARS-CoV-2 is thought to play a role in protection against severe
104 disease[14] and may thus provide for patients under anti-CD20 treatment some level of
105 protection despite their limited antibody response. The number and functionality of T cells is
106 generally maintained after treatment with B-cell targeting drugs, although depletion of some
107 CD20+ T cells, an increase in memory and loss of terminally differentiated CD4+ T cells
108 have been reported [20, 21]. To assess if mRNA vaccines could elicit T cell responses in our
109 patient cohort, we stimulated PBMC collected 30 days after the second vaccine dose with a
110 pool of peptides covering the S-protein [22] and identified S-specific T cells using the
111 activation-induced marker (AIM) assay. S-specific OX40+ 41-BB+ CD4+ T cells were
112 equally induced in immunocompetent and anti-CD20 treated patients (Fig 2C), with a high
113 frequency of responders (85-91%). S-specific CD69+ 41BB+ CD8+ T cells were detectable at
114 similar level in all groups, however there was a statistically significant higher response rate
115 found in ocrelizumab- (96.2%; 25/26) and rituximab-treated patients (81.8%; 9/11) compared
116 to controls (66.7%; 14/21, $p=0.02$, Fig 2E). Previous history of COVID-19 and the type of
117 mRNA vaccine had no impact on the level of vaccine-specific T-cells. Interestingly, the
118 magnitude of S-specific CD8+ T cells correlated inversely with anti-RBD antibody responses
119 considering all participants (Fig 2F, not significant for CD4+ T cells, Fig 2D). Lastly, the
120 higher frequency of patients with AIM+ CD8+ T cells compared to controls was probably not
121 due to higher levels of pre-existing cross-reactive T cells: in a subset of previously uninfected
122 patients ($n=13$), S-specific AIM+ CD4+ and CD8+ T cells were undetectable at time of first
123 vaccination (Sup Fig 2B, C).

124 This suggests that the benefit of vaccination in terms of T cell responses might be higher in
125 patients with anti-CD20 treatment than in the general population.

126 We then assessed the functionality of antigen-specific T cells to understand if the quality of T
127 cell responses is altered in the absence of B cells. mRNA COVID-19 vaccines are known to
128 predominantly induced Th1 CD4⁺ T cells expressing IL-2, IFN-gamma and the transcription
129 factor Tbet rather than Th2 (IL-13⁺, GATA3⁺) or Th17 (IL-17⁺, RORgammaT⁺) cells [17].
130 First, we confirmed that a majority of S-specific AIM⁺ CD4⁺ T cells expressed Tbet in all
131 patients and controls and found that some ocrelizumab-treated patients had a higher
132 percentage of GATA-3⁺ T cells, however not reaching statistical significance at the group
133 level (Fig 2A).

134 Next, we used intracellular cytokine staining to evaluate if vaccine-specific T cells express
135 several cytokines, given that polyfunctional T cells are often associated with improved
136 vaccine-induced protection to viral infection. We found anti-CD20 treated patients had similar
137 level of S-specific CD4⁺ T cells expressing at least 2 of the markers IL-2, TNF-alpha, IFN-
138 gamma or granzyme B as compared to controls, suggesting a similar polyfunctionality (Fig
139 2B). The frequency of S-specific CD4⁺ T cells producing IL-2 and IL-2+TNF-alpha⁺ in both
140 ocrelizumab and rituximab-treated patients was however higher as compared to
141 immunocompetent controls, while the percentage of CD4⁺ T cells expressing IFN-gamma
142 alone or in combination with other cytokines was similar (Fig 2C and Sup Fig 3A). There
143 were no detectable IL-13 or IL-17-expressing CD4⁺ T cells (Sup Fig 3A). Some cytokine-
144 expressing CD4⁺ T cells co-expressed granzyme B, suggesting that those cells could also
145 have cytotoxic capacity.

146 In general, S-specific CD8⁺ T cells expressing either IL-2 or IFN-gamma were detected in
147 more patients treated with anti-CD20 than in controls (Fig 3A). The percentage of IL-2-
148 expressing cells was significantly higher (p=0.013) in Ocrelizumab-treated patient as
149 compared to controls while only a trend was observed for IFN-gamma (p=0.07) and for
150 rituximab-treated patients for all two cytokines. Similar to CD4⁺ T cells, patients on anti-
151 CD20 had polyfunctional vaccine-specific CD8⁺ T cells, with a trend for more cells
152 expressing at least 3 markers and significantly more single IL2⁺ than controls (Fig 3B, C). In
153 general, a higher frequency of S-specific CD8⁺ T cells co-expressing granzyme and cytokines
154 were found in patients as compared to controls.

155 Altogether, our data suggest that S-specific T cells induced by mRNA vaccines have a similar
156 functional profile but a more activated phenotype in anti-CD20 treated patients as compared
157 to controls. Our finding is consistent with preserved T cell function in these patients and
158 earlier report of cellular responses induced by other vaccines [23]. One hypothesis to explain

159 higher T cell activation in those patients could be the presence of more activated APCs (eg.
160 monocytes) at time of vaccination as a result of B cell depletion [24].

161 Finally, we assessed the memory phenotype of S-specific AIM⁺ CD4⁺ and CD8⁺ T cells and
162 did not find any difference between groups (Sup Fig 3 and 4). CD8⁺ T cells had
163 predominantly an effector memory phenotype (CD45RA⁻ CCR7⁻) while CD4⁺ T cell
164 phenotypes were equally effector (CD45RA⁻ CCR7⁻) and central memory (CD45RA⁻
165 CCR7⁺). This suggest that in addition to generating polyfunctional T cells, it is likely that
166 mRNA vaccines can generate long-lasting memory T cells in patients treated with anti-CD20.
167 This will be confirmed in follow-up studies looking at the persistence of the cellular response
168 in these patients at 6- and 12-months post vaccination. Interestingly, in hematologic cancer
169 patients treated with anti-CD20, a greater number of CD8 T cells is associated with improved
170 survival to COVID-19, despite impairment in humoral immunity, and 77% of patients had
171 detectable SARS-CoV-2-specific T cell responses [25].

172 Limitations of our study include the small sample size and the short follow-up after
173 vaccination. We also were not able to correlate T cell findings with clinical protection as the
174 study was not designed to measure efficacy, which is pivotal in the identification of vaccine-
175 responders and the indication for a potential third vaccine dose. Strengths of our study is the
176 prospective design and the ability to evaluate two patient populations under anti-CD20
177 therapy who have different underlying conditions that do both not greatly affect other axes of
178 immune responses, such as in poly-immunosuppressed patients, or those suffering from
179 lymphoma or leukemia.

180 In summary, our study suggests that patients with anti-CD20 treatment are able to mount
181 potent T-cell responses to mRNA COVID-19 vaccines similar to immunocompetent controls.
182 Although patients treated with anti-CD20 treatment have decreased humoral responses to
183 mRNA COVID-19 vaccines, elicited T-cell memory response could reduce complications of
184 SARS-CoV-2 infection in this vulnerable population.

185

186 **METHODS**

187 **Study participants**

188 We included subjects that were ≥ 18 years of age scheduled to receive the COVID-19 vaccine
189 or having received ≤ 2 COVID-19 vaccine doses in the last 5 weeks. Subjects with SARS-
190 CoV-2 documented infection less than 3 months previous inclusion or ongoing signs of febrile
191 or non-febrile infection were excluded. Further details on the study are in supplementary
192 methods.

193

194 **Immunological read-outs**

195 Antibodies were measured using the Elecsys platform (Roche Diagnostics) and
196 seroconversion was defined as > 0.8 IU/ml. For the AIM assay, cells were stimulated
197 overnight with SARS-CoV-2 megapool peptides (by 10 overlapping 15 mers [22]) or in
198 DMSO (negative controls). For intracellular cytokine production, Brefeldin A (Golgiplug,
199 BD) was added to the culture overnight. Cells were stained with specific antibodies and
200 analysed by flow cytometry (see supplementary methods for further details). Percentage of S-
201 specific T cells, AIM+, cytokines+ or granzyme B + cells were calculated by subtracting the
202 value of the corresponding DMSO stimulation control samples.

203

204 **Statistics**

205 Clinical data are presented as medians with IQRs for continuous variables and frequency with
206 percentage for categorical variables. For comparison of immune responses between groups,
207 Kruskal-Wallis one-way ANOVA with Dunn's multiple comparisons was used. Categorical
208 variables were compared using Fisher's exact test. Correlation analyses were performed using
209 Spearman test. P values from correlations were corrected for multiple comparisons using the
210 False Discovery Rate method.

211

212 **Study approval**

213 This prospective observational study was conducted at the Geneva University Hospitals
214 (HUG), Switzerland according to the principles of Good Clinical Practice and was approved
215 by the Geneva Cantonal Ethics Commission (2021-00430). Informed consent was obtained
216 from all participants.

217

218 **AUTHOR CONTRIBUTIONS**

219 CAS, AF, PL, AD and CE conceived the study and wrote the clinical protocol. NM and ISR
220 conducted and analyzed the T cell assays. KL, GB and RG analyzed the clinical data. DA
221 conducted serology testing. RG organized participants recruitment and the collection of
222 clinical specimens. AG and AS provided peptide pools and technical support. NM, AD and
223 CE prepared figures and wrote the manuscript. All authors provided intellectual input and
224 reviewed the manuscript.

225

226 **ACKNOWLEDGMENTS**

227 We are grateful to all volunteers for their participation in the study. We thank Mélanie Jaquet,
228 Sandra Fernandes Oliveira, Olivia Studer, Sandrine Bastard and colleagues at the Clinical
229 Research Center, University Hospital and Faculty of Medicine, Geneva for their involvement
230 in patient recruitment and sample collection; Chantal Tougne, Paola Fontannaz, Loïck
231 Staudenmann and Yves Donati for their contributions to processing the clinical samples and
232 support in experimental work. We thank all colleagues that have provided support to
233 participant recruitment, sample collection and experimental work. This work was supported
234 by the HUG private Foundation (CSE, CAS, AD), the NIH NIAID contract no.
235 75N9301900065 (AS) and by the Giorgi-Cavaglieri foundation (AD).

236

237 **CONFLICT OF INTEREST**

238 AS is a consultant for Gritstone, Flow Pharma, CellCarta, Arcturus, Oxfordimmunotech, and
239 Avalia. AD is consultant for Speranza. All of the other authors declare no competing interests.
240 LJI has filed for patent protection for various aspects of vaccine design and identification of
241 specific epitopes.

242 REFERENCES

- 243 1. Sparks, J.A., et al., *Associations of baseline use of biologic or targeted synthetic DMARDs with*
244 *COVID-19 severity in rheumatoid arthritis: Results from the COVID-19 Global Rheumatology*
245 *Alliance physician registry.* Ann Rheum Dis, 2021.
- 246 2. Sormani, M.P., et al., *Disease-Modifying Therapies and Coronavirus Disease 2019 Severity in*
247 *Multiple Sclerosis.* Ann Neurol, 2021. **89**(4): p. 780-789.
- 248 3. Avouac, J., et al., *COVID-19 outcomes in patients with inflammatory rheumatic and*
249 *musculoskeletal diseases treated with rituximab: a cohort study.* Lancet Rheumatol, 2021.
250 **3**(6): p. e419-e426.
- 251 4. Bar-Or, A., et al., *Effect of ocrelizumab on vaccine responses in patients with multiple*
252 *sclerosis: The VELOCE study.* Neurology, 2020. **95**(14): p. e1999-e2008.
- 253 5. Bingham, C.O., 3rd, et al., *Immunization responses in rheumatoid arthritis patients treated*
254 *with rituximab: results from a controlled clinical trial.* Arthritis Rheum, 2010. **62**(1): p. 64-74.
- 255 6. Westra, J., et al., *Rituximab impairs immunoglobulin (Ig)M and IgG (subclass) responses after*
256 *influenza vaccination in rheumatoid arthritis patients.* Clin Exp Immunol, 2014. **178**(1): p. 40-
257 7.
- 258 7. Zabalza, A., et al., *COVID-19 in multiple sclerosis patients: susceptibility, severity risk factors*
259 *and serological response.* Eur J Neurol, 2020.
- 260 8. Sattler, A., et al., *Impaired humoral and cellular immunity after SARS-CoV2 BNT162b2*
261 *(Tozinameran) prime-boost vaccination in kidney transplant recipients.* J Clin Invest, 2021.
- 262 9. Herishanu, Y., et al., *Efficacy of the BNT162b2 mRNA COVID-19 vaccine in patients with*
263 *chronic lymphocytic leukemia.* Blood, 2021. **137**(23): p. 3165-3173.
- 264 10. Furer, V., et al., *Immunogenicity and safety of the BNT162b2 mRNA COVID-19 vaccine in*
265 *adult patients with autoimmune inflammatory rheumatic diseases and in the general*
266 *population: a multicentre study.* Ann Rheum Dis, 2021.
- 267 11. Achiron, A., et al., *Humoral immune response to COVID-19 mRNA vaccine in patients with*
268 *multiple sclerosis treated with high-efficacy disease-modifying therapies.* Ther Adv Neurol
269 Disord, 2021. **14**: p. 17562864211012835.
- 270 12. Soresina, A., et al., *Two X-linked agammaglobulinemia patients develop pneumonia as*
271 *COVID-19 manifestation but recover.* Pediatr Allergy Immunol, 2020. **31**(5): p. 565-569.
- 272 13. Gallais, F., et al., *Intrafamilial Exposure to SARS-CoV-2 Associated with Cellular Immune*
273 *Response without Seroconversion, France.* Emerg Infect Dis, 2021. **27**(1): p. 113-21.
- 274 14. McMahan, K., et al., *Correlates of protection against SARS-CoV-2 in rhesus macaques.* Nature,
275 2021. **590**(7847): p. 630-634.
- 276 15. Peng, Y., et al., *Broad and strong memory CD4(+) and CD8(+) T cells induced by SARS-CoV-2 in*
277 *UK convalescent individuals following COVID-19.* Nat Immunol, 2020. **21**(11): p. 1336-1345.
- 278 16. Jackson, L.A., et al., *An mRNA Vaccine against SARS-CoV-2 - Preliminary Report.* N Engl J Med,
279 2020. **383**(20): p. 1920-1931.
- 280 17. Sahin, U., et al., *BNT162b2 vaccine induces neutralizing antibodies and poly-specific T cells in*
281 *humans.* Nature, 2021.
- 282 18. Spiera, R., S. Jinich, and D. Jannat-Khah, *Rituximab, but not other antirheumatic therapies, is*
283 *associated with impaired serological response to SARS- CoV-2 vaccination in patients with*
284 *rheumatic diseases.* Ann Rheum Dis, 2021.
- 285 19. Mazzoni, A., et al., *First-dose mRNA vaccination is sufficient to reactivate immunological*
286 *memory to SARS-CoV-2 in subjects who have recovered from COVID-19.* J Clin Invest, 2021.
287 **131**(12).
- 288 20. Gingele, S., et al., *Ocrelizumab Depletes CD20⁺ T Cells in Multiple Sclerosis Patients.* Cells,
289 2018. **8**(1).
- 290 21. Nissimov, N., et al., *B cells reappear less mature and more activated after their anti-CD20-*
291 *mediated depletion in multiple sclerosis.* Proc Natl Acad Sci U S A, 2020. **117**(41): p. 25690-
292 25699.

- 293 22. Grifoni, A., et al., *Targets of T Cell Responses to SARS-CoV-2 Coronavirus in Humans with*
294 *COVID-19 Disease and Unexposed Individuals*. *Cell*, 2020. **181**(7): p. 1489-1501.e15.
- 295 23. Agarwal, A., et al., *Rituximab, anti-CD20, induces in vivo cytokine release but does not impair*
296 *ex vivo T-cell responses*. *Am J Transplant*, 2004. **4**(8): p. 1357-60.
- 297 24. Lehmann-Horn, K., et al., *Anti-CD20 B-cell depletion enhances monocyte reactivity in*
298 *neuroimmunological disorders*. *J Neuroinflammation*, 2011. **8**: p. 146.
- 299 25. Bange, E.M., et al., *CD8(+) T cells contribute to survival in patients with COVID-19 and*
300 *hematologic cancer*. *Nat Med*, 2021.

301

302 **FIGURES LEGENDS**

303

304 **Figure 1. SARS-Cov2 mRNA vaccination induces antigen-specific CD4+ and CD8+ T-**
305 **cells in Rituximab and Ocrelizumab-treated patients.**

306 (A) Levels of anti-SARS-CoV-2 N and RBD total Ig measured in sera of healthy controls
307 (n=22), rituximab (n=11) and ocrelizumab-treated patients (n=26) 30 days after the second
308 dose of BNT162b2 (open symbol) or mRNA-1273 (closed symbol) COVID-19 mRNA
309 vaccines. Dotted line indicates cut-off for seropositivity: anti-RBD; 0.8 U/ml; anti-N: 1 COI.
310 (B) Spearman correlations of anti-RBD antibodies and frequency of CD19+ B-cells in all
311 patients (n=58) (C,E) Representative flow cytometry plots of CD4+ (C) and CD8+ (E) T-cells
312 after PBMC stimulation with DMSO (negative control) and S-peptide pool 30 days after the
313 second vaccination. S-specific AIM+ T-cells are gated as OX40+ 41-BB+ for CD4+ T cells
314 (C) or CD69+ 41-BB+ for CD8+ T-cells (E). Individual data are represented on the right-
315 hand panel with geometric mean. The dotted line represents the limit of detection. Percentages
316 of responders (those with level above limit of detection) are indicated. (D,F) Correlation of
317 anti-RBD total antibodies and AIM+ CD4+ (D) and CD8+ (F) T-cells in all patients (n=58).

318

319 **Figure 2. S-specific CD4+ T cell vaccine response is polyfunctional in patients treated**
320 **with anti-CD20 and produce more IL-2 compared to controls.**

321 (A) Expression of Tbet, GATA3, and RORgt in non-specific CD4+ T-cells (“bulk”) and
322 AIM+ S-specific CD4+ T-cells of healthy controls (n=14-18), rituximab-treated patients
323 (n=7-10), and ocrelizumab-treated patients (n=13-22) after stimulation with peptide pool.
324 Analyses were restricted to individuals with detectable AIM+ CD4+ T-cells. (B) Pie chart
325 showing polyfunctionality of S-specific CD4+ T cells of healthy controls (n=21), rituximab-
326 treated patients (n=11) and ocrelizumab-treated patients (n=26). The proportions of CD4+ T-
327 cells expressing 1, 2, 3, or 4 of the activation markers IL2, TNF-a, IFN-gamma or Granzyme
328 B after peptide pool stimulation are shown. (C) Individual data of S-specific CD4+ T-cells
329 expressing different combination of markers (in % of total CD4+ T cells, background
330 subtracted).

331

332 **Figure 3. S-specific CD8+ T cell vaccine response are more activated in patients treated**
333 **with anti-CD20 as compared to controls.**

334 (A) Expression of S-specific CD8+ T-cells expressing IFN γ , IL-2 or Granzyme B in healthy
335 controls (n=21), rituximab-treated patients (n=11) and ocrelizumab-treated patients (n=26)
336 upon stimulation with peptide pool (background subtracted). (B) Pie chart showing
337 polyfunctionality of S-specific CD8+ T cells shown as proportions of CD8+ T-cells
338 expressing 1, 2, 3, or 4 of the activation markers IL2, TNF α , IFN γ or Granzyme B after
339 peptide pool stimulation (C) Individual data of S-specific CD8+ T-cells expressing different
340 combination of markers (in % of total CD8+ T cells, background subtracted).

341 **TABLE 1**

	Healthy controls	MS patients	RD patients
n	22	26	11
Female, n(%)	15 (68.2)	14 (53.8)	7 (63.6)
Age, median[IQR]	54.5 [43.5, 58.8]	45.6 [39.8, 52.7]	58.0 [46.4, 64.6]
Comorbidities*, n(%)	3 (13.6)	6 (23.1)	7 (63.6)
History COVID-19 (RT-PCR), n (%)	3 (13.6)	0	2 (18.2)
Positive anti-N serology, n(%)	4 (18.2)	1 (3.8)	0 (0)
Vaccine, n(%)			
BNT162b2	5 (22.7)	3 (11.5)	5 (45.5)
mRNA-1273	17 (77.3)	23 (88.5)	6 (54.5)
Neurologic disease, n(%)	-		-
PPMS	-	3 (11.5)	-
RRMS	-	21 (80.8)	-
SPMS	-	2 (7.7)	-
Rheumatologic disease, n(%)	-	-	
Rheumatoid arthritis	-	-	7 (63.6)
CTD	-	-	3 (27.3)
Vasculitis	-	-	1 (9.1)
Anti-CD20 therapy, n(%)¹			
Ocrelizumab (600 mg)	-	26 (100)	-
Rituximab	-	-	11 (100)
500 mg	-	-	1 (9.1)
1000 mg	-	-	5 (45.5)
1500 mg	-	-	1 (9.1)
2000 mg	-	-	4 (36.4)
Time between last treatment and 1st vaccine dose, weeks [IQR]	-	24.9 [17.3, 26.4]	42.0 [30.6, 58.7]
Other treatment, n(%)	-		
Glucocorticoid	-	0	2 (18.2)
Methotrexate	-	0	4 (36.4)
Leflunomide	-	0	1 (9.1)

PPMS: primary progressive multiple sclerosis, RRMS: relapsing remitting multiple sclerosis, SPMS: secondary progressive multiple sclerosis, CTD: connective tissue disease, IS: immunosuppressive treatment

*Comorbidities: chronic lung disease, diabetes, hypertension, obesity, depression, cardiovascular disease

¹The dose mentioned is the total dose that the subject received in around 2 weeks.

²Measured between D0 and D60, if not available between the last dose and D0 and if not available, considered as missing

342

Figure 1

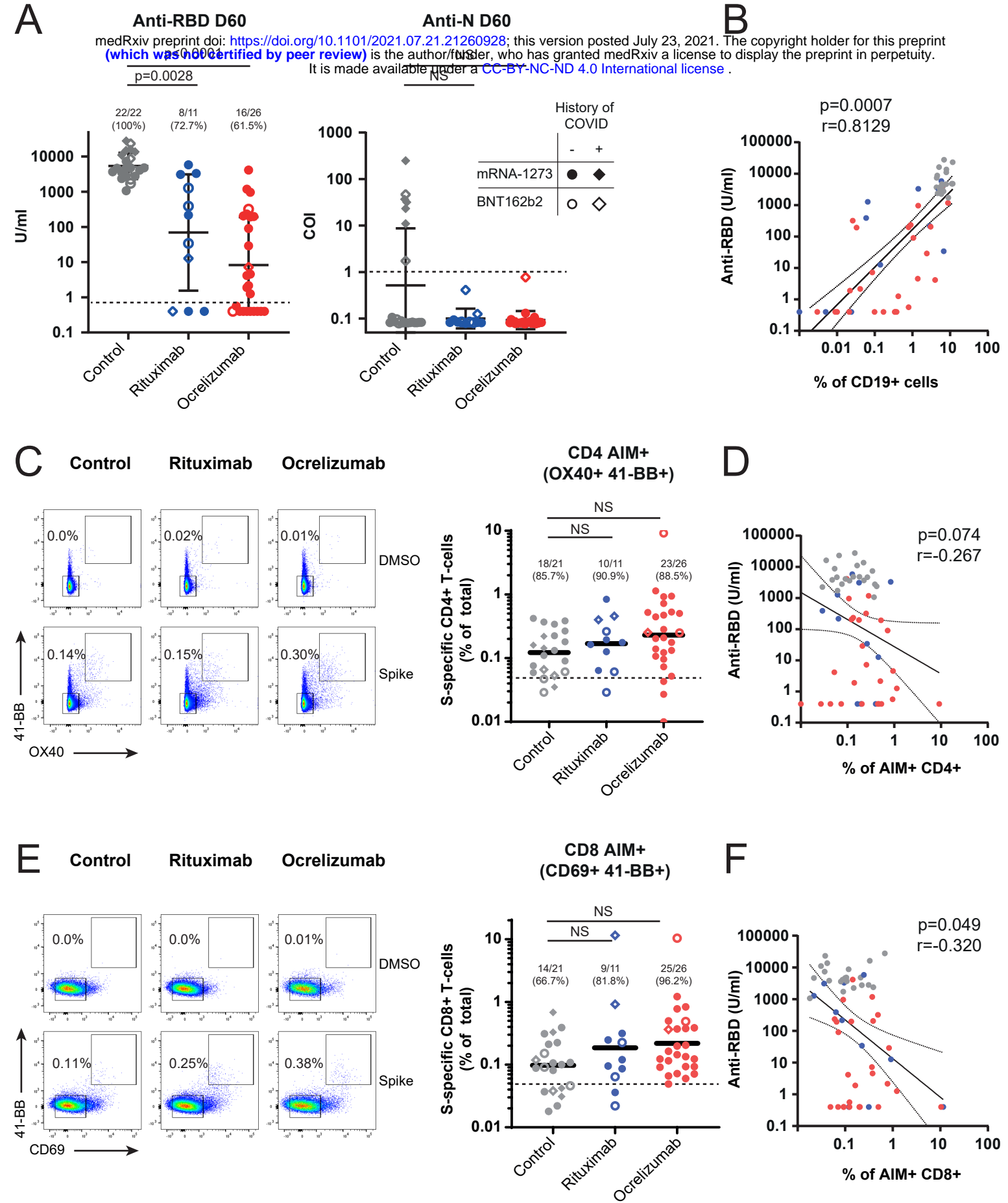


Figure 2

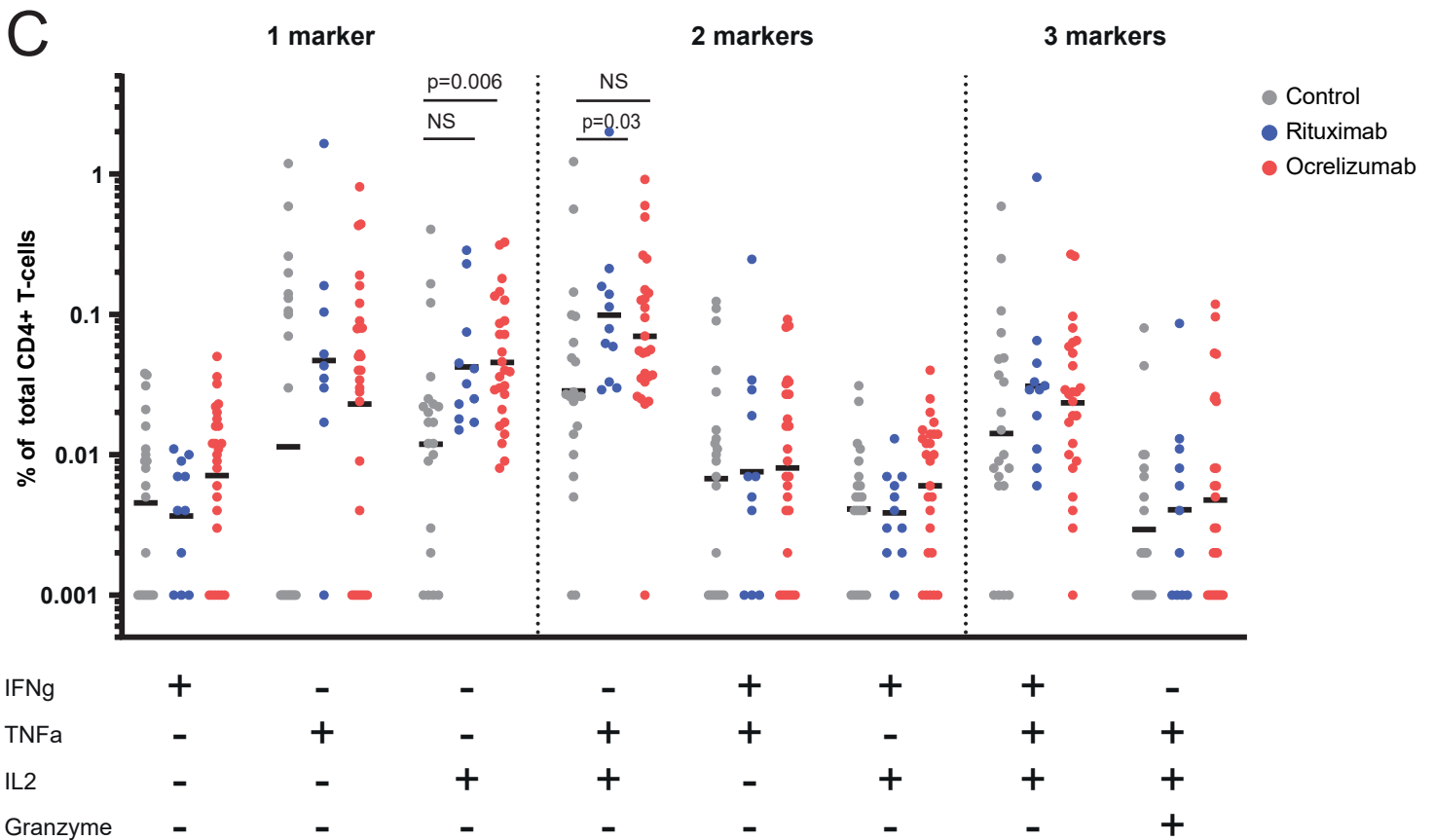
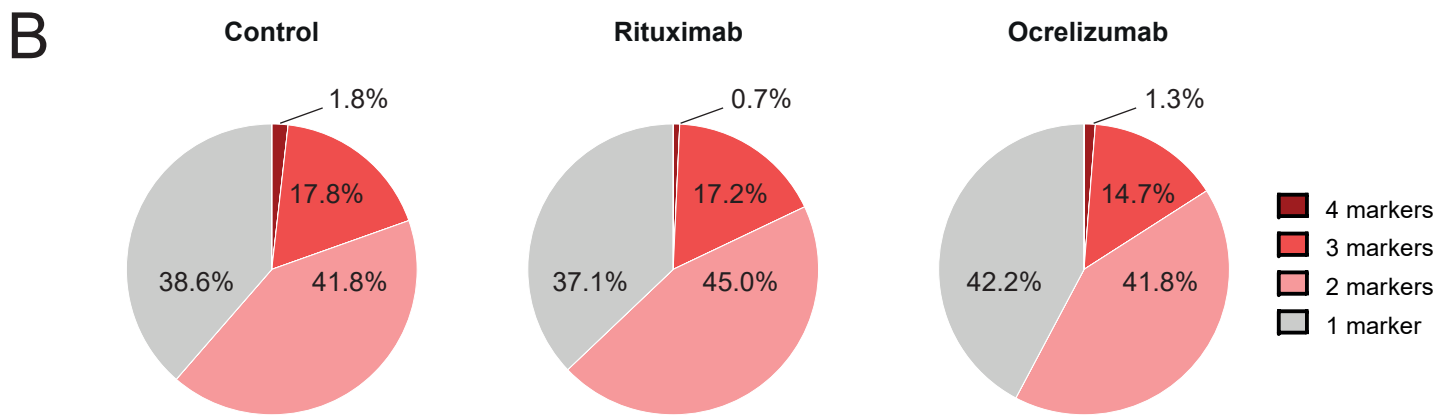
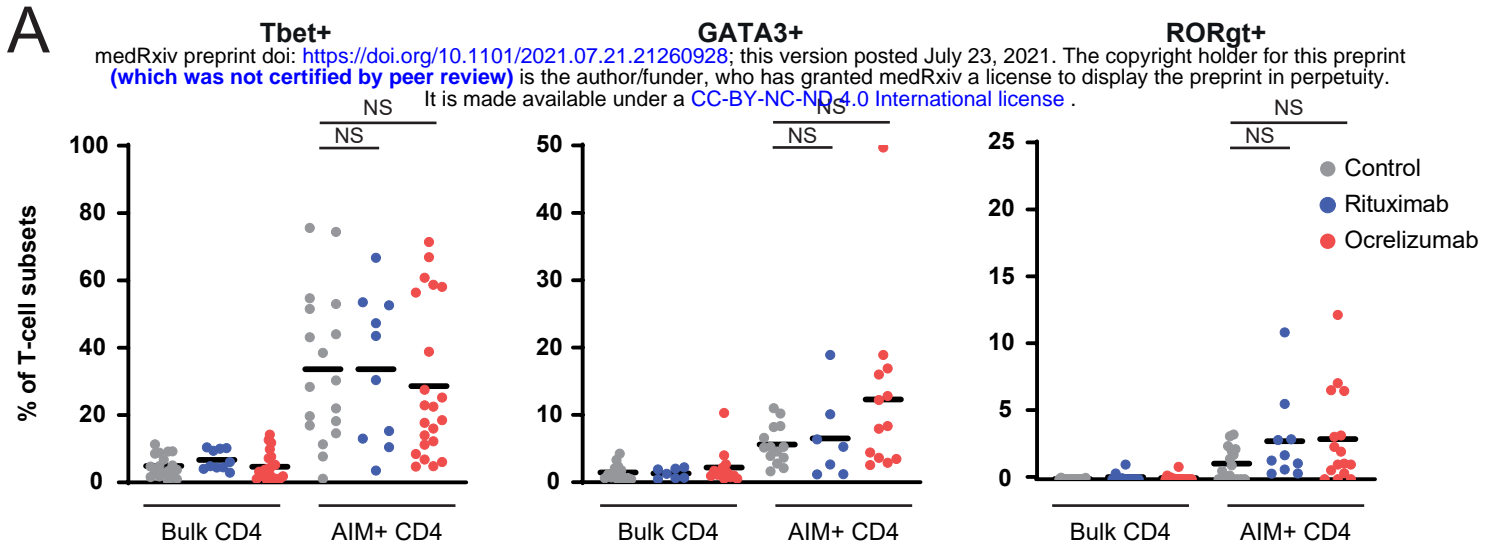
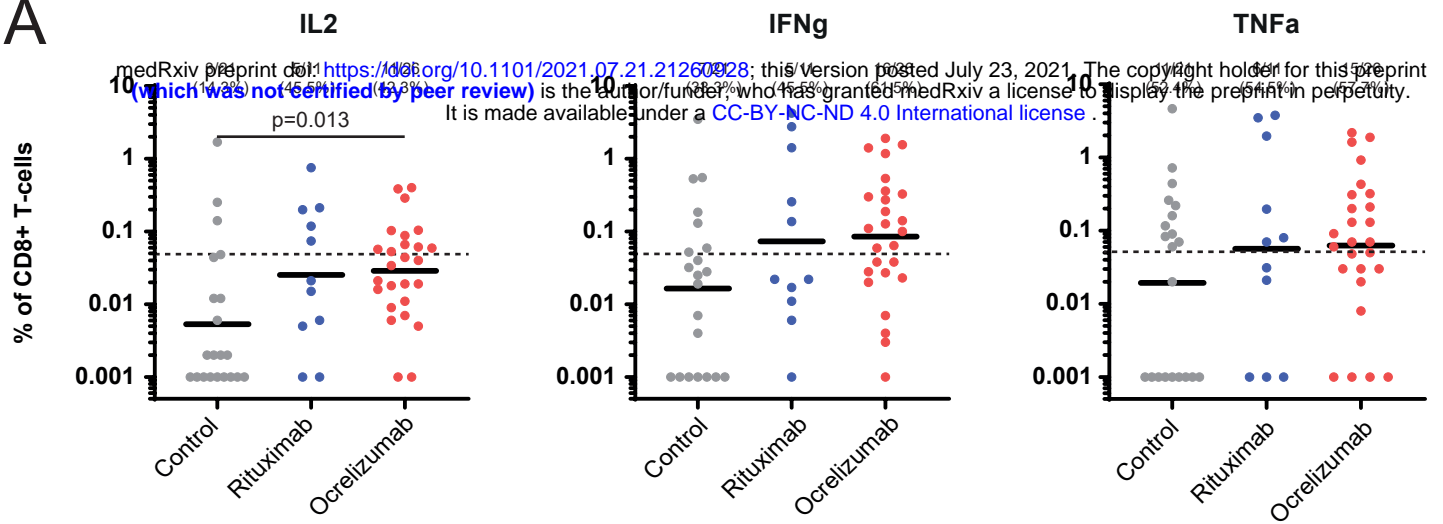
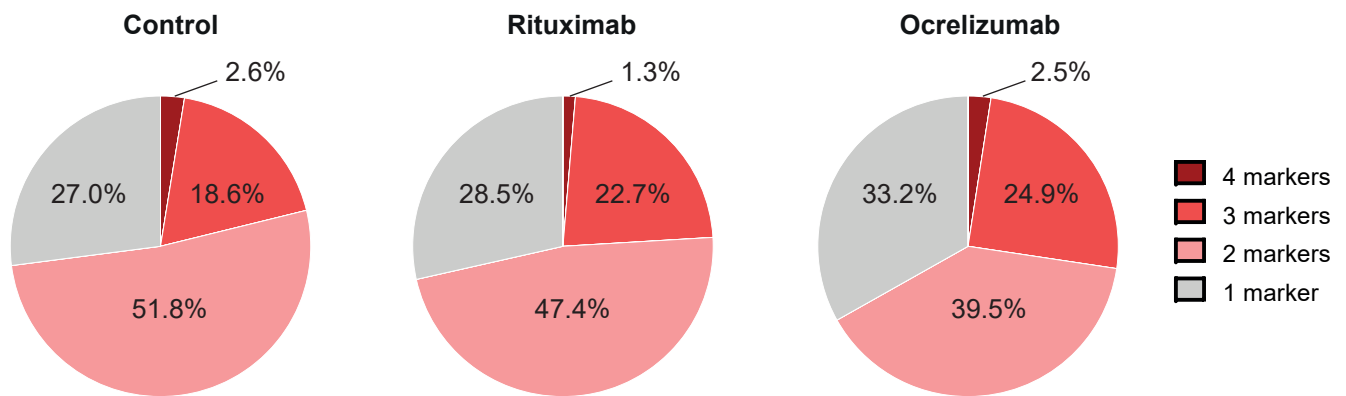


Figure 3

A



B



C

