

1 **Examining risk factors for weight change during midlife: A Mendelian randomization study**

2

3 Grace M. Power^{1*}, Jessica Tyrrell², Apostolos Gkatzionis¹, Si Fang¹, Jon Heron¹, George Davey
4 Smith^{1*†}, Tom G. Richardson^{1,3*†}

5

6 ¹ *MRC Integrative Epidemiology Unit, Population Health Sciences, University of Bristol, Bristol, UK*

7 ² *Genetics of Complex Traits, College of Medicine and Health, University of Exeter, Exeter, UK.*

8 ³ *Department of Genetics, Novo Nordisk Research Centre Oxford, Oxford, UK*

9

10 †These authors contributed equally as last authors to this work

11

12 ***Corresponding authors:**

13 Grace M Power, MRC Integrative Epidemiology Unit, University of Bristol, Oakfield House,
14 Oakfield Grove, Bristol, BS8 2BN, UK. Email: grace.power@bristol.ac.uk; Tel: +44 (0)117 331 0098

15 George Davey Smith - MRC Integrative Epidemiology Unit, University of Bristol, Oakfield House,
16 Oakfield Grove, Bristol, BS8 2BN, UK. Email: kz.davey-smith@bristol.ac.uk; Tel: +44 (0)117 331
17 0098

18 Tom G Richardson - MRC Integrative Epidemiology Unit, University of Bristol, Oakfield House,
19 Oakfield Grove, Bristol, BS8 2BN, UK. Email: tom.g.richardson@bristol.ac.uk; Tel: +44 (0)117 331
20 0098

21

22 **Abstract:**

23

24 **Background:** Maintaining a healthy weight across adulthood reduces morbidity and mortality risk
25 in later life. This study aimed to examine factors contributing to weight change over a one-year
26 interval in midlife. While conventional epidemiological analyses have reported risk factors
27 associated with weight change, biases such as confounding present challenges when inferring
28 causality.

29 **Methods:** Conventional observational analyses were used in addition to a one-sample Mendelian
30 randomization (MR) approach to estimate the genetically predicted effects of four exposures
31 (alcohol consumption, smoking intensity, educational attainment and Alzheimer’s disease liability)
32 on weight change (mean age: 56.9 years) using data from 329 531 participants in the UK Biobank.

33 **Results:** One-sample MR indicated strong evidence that Alzheimer’s disease liability increased the
34 odds of weight loss whilst conventional analyses reported little evidence of this. In MR and
35 conventional epidemiological analyses, higher educational attainment was associated with
36 maintaining a steady weight. In addition, higher alcohol consumption was associated with weight
37 gain in conventional analyses only. Finally, whilst conventional analyses showed that smoking
38 heaviness was associated with weight gain, the converse was supported by MR, which
39 indicated strong evidence that smoking heaviness reduced the odds of weight gain.

40 **Conclusions:** Our findings highlight important risk factors for weight change in midlife and
41 emphasise the public health importance of evaluating the dynamic changes to body weight within
42 a causal inference setting.

43 **Keywords:** weight change, midlife, causal inference, Mendelian randomization

44 Background

45

46 Age-related changes in weight and body composition can have major health implications (1-5).

47 Whilst weight gain in adulthood has been associated with increased risk of cardiometabolic

48 disease, including type 2 diabetes and coronary heart disease (1, 5), weight loss in midlife may be

49 an early indicator of dementia and increased mortality risk in later life (2-4). Mendelian

50 randomization (MR) is a technique that can be used to generate evidence about the causal effects

51 of modifiable exposures on outcomes by exploiting the quasi-random assortment of genetic

52 variants associated with an exposure of interest (6, 7). As an individual's genotype is established

53 at zygote formation, genetic variation is robust to reverse causation and confounding is

54 substantially less evident than in conventional epidemiological studies (6, 7). Often MR studies

55 investigating weight, however, employ a single cross-sectional measure of body mass index (BMI)

56 overlooking the dynamic feature of body weight change over time (3). To aid in the prevention of

57 long-term consequences resulting from weight change in midlife, gaining a comprehensive

58 understanding of the genetically predicted effects of potential risk factors on weight change during

59 this lifecourse interval, is of key public health importance.

60

61 Lifestyle risk factors, including increased alcohol consumption and smoking intensity, have been

62 shown to associate with weight change (8-10). Alcohol has previously been reported to increase

63 weight as a consequence of excess calorie intake (10). However, evidence is varying, with several

64 studies also indicating absent or weak associations between alcohol consumption and weight gain

65 (11, 12). Findings concerning the relationship between smoking and weight change are

66 additionally conflicting (8, 9). Such inconsistencies are likely due to the influence of other lifestyle
67 factors since physical inactivity, unhealthy diet and alcohol intake are positively correlated with
68 both adiposity and smoking behaviour (13).

69
70 Another marker often shown to be associated with weight change is education. Higher educational
71 attainment was shown to be associated with a reduced increase in weight gain during adulthood
72 in a large multicentre prospective cohort study conducted between 1992 to 2000 across Europe
73 (n=361,467) (14). Several studies have also reported an inverse association between education
74 and changes in body mass index (BMI) measured across the lifecourse (14, 15). Furthermore, a
75 2013 systematic review comprising 289 associational studies assessing educational attainment
76 and obesity identified an inverse relationship in studies from higher-income countries (16). Evident
77 within this review, however, was a sparsity of investigations that adequately adjusted for all
78 potential confounders, highlighting the inherent issues of residual confounding within
79 conventional observational research (6, 7).

80
81 Whilst it is well documented that weight loss occurs more frequently in patients with Alzheimer's
82 disease than amongst their cognitively normal counterparts, there is some evidence that weight
83 loss manifests before Alzheimer's disease (17). MR has been extended to evaluate the genetically
84 predicted effects of disease liability on outcomes (18), which includes diseases that typically have
85 a late-onset in the lifecourse, such as dementia. Since latent liability to dementia can be thought
86 of as probabilistically underlying the binary diagnosis measure, results are interpreted on the
87 liability scale (19). Within the data employed in this study, participants are likely to be at different

88 stages of disease development and some who would never develop disease may still show
89 influences of liability, emphasising the need for interpretation to be the effect of disease liability.

90

91 This study aims to estimate the effects of Alzheimer's disease liability, educational attainment,
92 alcohol consumption and smoking on self-reported weight change over a one-year interval in
93 midlife, using data on participants from the UK Biobank study (20). Initially, conventional
94 epidemiological analyses will be conducted. MR analyses will subsequently be applied. Whilst
95 individuals considered overweight are shown to be more likely to under-report weight (16), the
96 discrepancy between self-reported weight change compared to measured weight change has
97 previously been shown to be minor (21). Even so, this investigation seeks to validate the self-
98 reported weight change measure used in this study, by examining the relationship between self-
99 reported weight loss and weight gain and all-cause mortality in later life, an outcome shown to
100 result from unintentional weight changes (3-5).

101

102 **Methods:**

103

104 Data resources

105

106 Data were collected from the UK Biobank study; a population-based cohort aged between 40-69
107 years at recruitment, enrolled in the United Kingdom between 2006 and 2010 (20). In depth details
108 on data collection within UK Biobank during clinic visits and through electronic health records, as
109 well as genotyping, quality control and imputation have been described in detail previously (22).
110 The UK Biobank study have obtained ethics approval from the Research Ethics Committee (REC;
111 approval number: 11/NW/0382). The primary data from the UK Biobank resource that support the
112 findings of this study are accessible upon application (<https://www.ukbiobank.ac.uk/>).

113

114 All observational exposure data were self-reported and collected during a single wave between
115 2006 and 2010 (Supplementary Table S1). Smoking intensity was assessed by number of cigarettes
116 per day. Alcohol intake was assessed by units per day, which was calculated from the NHS
117 estimates of pure alcohol consumption (23). Weekly and monthly average intake was converted
118 to daily intake by dividing by 7 and 30, respectively. Educational attainment was derived as a
119 continuous score using the criteria described previously by the Social Science Genetic Association
120 Consortium (SSGAC) consortium (24). This is measured as the number of years of schooling that
121 individuals completed. Family history of Alzheimer's disease was analysed as a binary variable
122 indicating either or both parents reportedly having Alzheimer's disease, as well as subsequent
123 analyses of mothers and fathers separately. The outcome variable used in this investigation was

124 obtained from participants being asked the question “Compared with one year ago, has your
125 weight changed?” with the response options “Yes – lost weight”, “No – weight about the same”
126 and “Yes – gained weight”. Whilst a popular approach to carrying out analyses on a categorical
127 outcome with more than two groups is to implement a multinomial regression, this method may
128 not be able to recover causal effects due to collider bias (25). The outcome of interest was
129 therefore separated into two binary dependent variables; weight loss compared to staying the
130 same and weight gain, coded 1 and 0, respectively, and weight gain compared to staying the same
131 and weight loss, coded 1 and 0, respectively. In this instance, no individuals were dropped helping
132 to mitigate against bias. Complete data were available on 329 531 participants of European
133 ancestry in the UK Biobank. Missing observations were excluded from analyses. The variable
134 indicating all-cause mortality, taken from the death register and accessible via the UK Biobank,
135 was used to validate our outcome variable, since self-reported unintentional weight change has
136 previously been shown to strongly associate with mortality (3-5).

137

138 Genetic risk scores

139

140 In order for a genetic variant to be considered an instrumental variable for an exposure in MR
141 analyses, the instrumental variables used must i) associate with the exposure of interest
142 conditional on the other exposures (the ‘relevance’ assumption), ii) not affect the outcome except
143 through the exposures (the ‘exclusion restriction’ assumption) and iii) be independent of all
144 confounders, both observed and unobserved, of any of the instrumental variables and outcome
145 (the ‘exchangeability’ assumption) (6, 7). Instruments for each exposure were constructed as mr

146 genetic risk scores coded additively in UK Biobank using the software PLINK (26). Genetic variants
147 robustly associated with alcohol intake (27), educational attainment (28) and Alzheimer's disease
148 (29) were identified from large-scale genome-wide association studies which did not include the
149 UK Biobank study. Variants were selected based on $P < 5 \times 10^{-8}$ and $r^2 < 0.001$ using a reference panel
150 of Europeans from the 1000 genomes project phase 3 to ensure they were independent (30).
151 Genetic influence on smoking is poorly captured by the observed variable indicating number of
152 cigarettes smoked per day since the largest effect variant relates to other aspects of smoking
153 behaviour that influence biological exposure (31). Thus, for smoking intensity, we used a single
154 variant as our instrument (rs16969968) located at the CHRNA5 locus. This genetic variant relates
155 to lung cancer risk in smokers, though not in non-smokers and has been shown to be robustly
156 associated with smoking heaviness amongst smokers (32).

157

158 Statistical analysis

159

160 Logistic regression analyses were undertaken to estimate the association of each of the four
161 exposures with weight loss (compared to staying the same and weight gain) and weight gain
162 (compared to staying the same and weight loss). All analyses were adjusted for age, sex and the
163 top ten principal components to account for residual population stratification in the UK Biobank
164 study.

165

166 Univariable MR analyses were conducted using individual-level data by applying logistic regression
167 with the genetic instruments described above on the weight change variables. Using one-sample

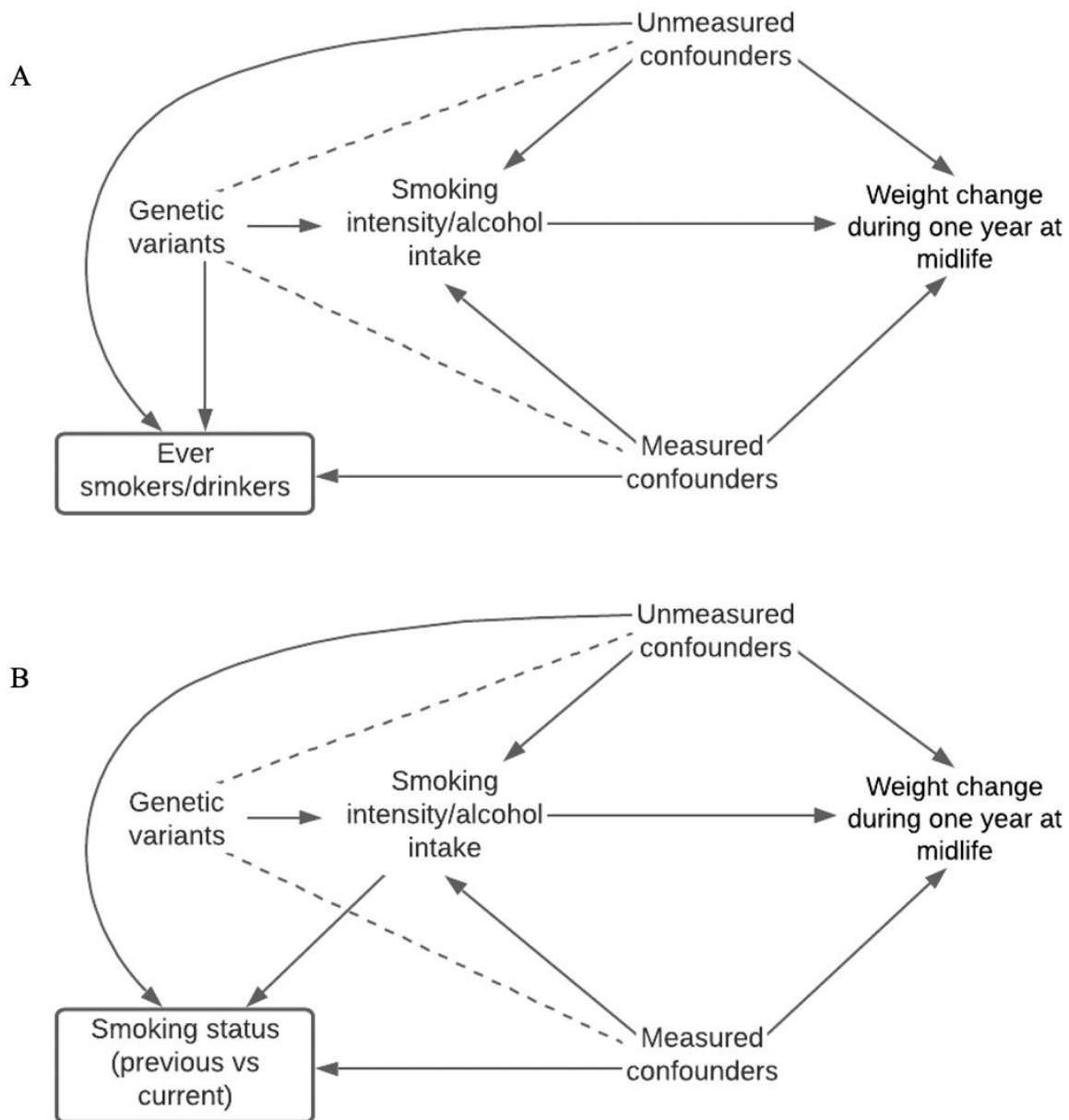
168 MR, as opposed to two-sample MR, allowed us to remove participants who had reportedly never
169 smoked or who do not drink. This ensured analyses were conducted accurately on appropriate
170 populations: ever smoked (n=150 799) and ever drunk alcohol (n=312 923). MR analyses were
171 adjusted for the same covariates as in the conventional epidemiological analysis. The principal
172 components were derived from the UK Biobank genetic data (20).

173
174 Previous evidence has found that the effect of ever smoking on BMI weakens as time since
175 smoking cessation increases (33). Therefore, MR analyses look at the relationship between the
176 genetic instrument used for smoking heaviness and weight change were also completed after
177 stratifying ever smokers into current (n=33 094) and previous (n=117 705) smokers. Furthermore,
178 conducting MR analyses in current smokers ensured comparisons could be made between MR and
179 conventional epidemiological estimates, since the observed smoking intensity variable was
180 measured by number of cigarettes smoked per day and is therefore collected for current smokers
181 only.

182
183 *Collider bias*

184
185 Inverse Probability Weighting (IPW), an approach that uses weights to attempt to make selected
186 participants a representative sample of the study population, has been shown to ameliorate
187 collider bias in MR studies (34, 35). We used IPW to account for both (i) selection on smoking and
188 alcohol use and (ii) stratification by smoking status. As illustrated in Figure 1, the exclusion of
189 never-smokers (or never-drinkers) opens a pathway between the genetic instrument used and the

190 outcome, weight change, via both measured and unmeasured confounders (Figure 1A). Likewise,
191 stratification within the ever smokers' group to investigate relationships within previous and
192 current smokers may also induce bias (Figure 1B). The use of IPW was restricted to MR analyses in
193 our paper, since data were not available to conduct the same analyses using conventional
194 methods.



195

196 **Figure 1: Directed acyclic graphs indicating potential collider bias.** Collider bias could be
197 encountered in this study when selecting participants based on smoking and alcohol drinking
198 status in the UK Biobank (A) and collider bias could be encountered in this study when stratifying
199 on participants' smoking status in the UK Biobank (B).

200
201 IPW weights were derived from a logit model estimated on the whole population. The logit model
202 included the collider variable (never vs ever smokers) as the binary outcome, and risk factors for
203 smoking initiation as independent variables. These weights were then included in the analysis
204 assessing the effect of the genetic instrument used for smoking intensity on weight change in ever
205 smokers. A similar model was fitted to assess the association between alcohol consumption and
206 weight change in ever drinkers. A second logit model was estimated within the ever (previous vs
207 current) smoking population. This included risk factors for current smoking. Weights from this
208 second model were multiplied by the previous weights described above. These new weights were
209 then included in the stratified analysis assessing the effect of the genetic instrument for smoking
210 intensity on the weight change variables within previous and current smokers. This technique
211 allows for each selected participant to account for themselves and for those with similar
212 characteristics who were not selected. Reduced sample sizes were a result of including additional
213 variables in our models as data on all variables were necessary to conduct this complete-case
214 analysis.

215

216 *Validation*

217

218 Self-reported unintentional weight loss over a one-year interval in adulthood has previously been
219 shown to strongly relate to mortality in later life (4). To validate the self-reported weight change
220 variable employed within this study, we conducted logistic regression analyses to calculate the
221 association between weight loss compared to remaining the same weight and weight gain
222 compared to remaining the same over a one-year period in midlife, and all-cause mortality. Since
223 our weight change measures were considered independent in this context, dropping those that
224 reported weight gain and weight loss, respectively, from these variables would not induce collider
225 bias. Analyses were adjusted for age, sex and the top ten principal components.

226

227 *Sensitivity analyses*

228

229 We conducted sensitivity analyses using MR to apply the pleiotropy robust weighted median and
230 MR-Egger methods using the ‘TwoSampleMR’ R package (36, 37). This was computed for the
231 exposures measuring alcohol consumption, educational attainment and Alzheimer’s disease
232 liability to examine the robustness of results to horizontal pleiotropy; the phenomenon where
233 genetic variants influence multiple traits or disease outcomes via independent biological
234 pathways. Pleiotropy robust methods were not undertaken for smoking intensity due to only using
235 a single SNP instrument at the *CHRNA5* locus. A two-sample MR leave one out analysis was
236 additionally undertaken, when estimating the effects of Alzheimer’s disease, by removing the
237 ‘rs12972156’ genetic variant, located at the *APOE* locus. This was to ensure that the ‘rs12972156’
238 genetic variant did not distort the overall results. There may be some potential for bias due to
239 sample overlap in these analyses. We conducted further analyses to provide evidence that the

240 weight change variable used in this study was indicative of unintentional weight change. For this,
241 we identified a variable in the UK Biobank showing major dietary changes in the last 5 years (n=334
242 212). This comprised three groups: 'No' (61.6%; 205 858/334 212), 'Yes, because of illness' (10.5%;
243 31 112/334 212) and 'Yes, because of other reasons' (27.9%; 93 242/334 212). Within the group
244 that answered 'No', we reran our analyses to generate estimates for risk factors of interest on
245 weight change during midlife.

246
247 Forest plots in this paper were generated using the R package 'ggplot2' (38). These analyses were
248 undertaken using R (version 3.5.1).

249

250

251 **Results:**

252

253 The study sample used comprised of 177 389 (53.8%) females and 152 142 (46.2%) males with a
254 mean (SD) age of 56.9 (8.0) years. Weight loss was reported by 50 262 (15.3%), weight gain by 92
255 057 (27.9%) and staying the same weight by 187 212 (56.8%) participants over a one-year interval
256 during midlife.

257

258 In MR analyses, there was strong evidence that a 1-SD increase in Alzheimer's disease liability
259 increased odds of weight loss (Odds ratio (OR), 95% CI: 1.023, 1.013 to 1.033, $P=2.67 \times 10^{-6}$) whilst
260 in conventional observational analyses, there was very little evidence of this effect (OR, 95% CI:
261 1.019, 0.991 to 1.049, $P=0.188$). Tables 1 and 2 and Figure 2A show educational attainment and
262 alcohol consumption reduced odds of weight loss, in both conventional observational and MR
263 estimates, and smoking intensity conferred increased odds of weight loss.

Table 1: Conventional epidemiological estimates for risk factors on weight loss compared to staying the same weight and weight gain and weight gain compared to staying the same and weight loss during midlife

Risk factor	Outcome	Coefficient*	SE	p Value	Odds Ratio (95% CI**)	Sample size	Population
Smoking heaviness (number of cigarettes smoked per day)	Weight loss compared to staying the same or weight gain	6.57E-03	2.13E-03	2.01E-03	1.007 (1.002, 1.011)	33098	Current smokers
Alcohol consumption (units per day)	Weight loss compared to staying the same or weight gain	-5.25E-03	2.99E-04	< 2E-16	0.995 (0.994, 0.995)	312923	Ever drinkers
Educational attainment	Weight loss compared to staying the same or weight gain	-5.66E-03	9.70E-04	5.42E-09	0.994 (0.992, 0.996)	326582	Total population
Alzheimer's in either or both parents	Weight loss compared to staying the same or weight gain	1.91E-02	1.45E-02	1.88E-01	1.019 (0.991, 1.049)	324803	Total population
Alzheimer's in mother	Weight loss compared to staying the same or weight gain	2.96E-03	1.72E-02	8.64E-01	1.003 (0.970, 1.037)	316511	Total population
Alzheimer's in father	Weight loss compared to staying the same or weight gain	2.90E-02	2.28E-02	2.04E-01	1.029 (0.984, 1.076)	307421	Total population
Smoking heaviness (number of cigarettes smoked per day)	Weight gain compared to staying the same or weight loss	1.20E-02	1.83E-03	4.60E-11	1.012 (1.008, 1.016)	33098	Current smokers
Alcohol consumption (units per day)	Weight gain compared to staying the same or weight loss	1.61E-03	2.22E-04	3.70E-13	1.002 (1.001, 1.002)	312923	Ever drinkers
Educational attainment	Weight gain compared to staying the same or weight loss	-3.32E-02	7.92E-04	< 2E-16	0.967 (0.966, 0.969)	326582	Total population
Alzheimer's in either or both parents	Weight gain compared to staying the same or weight loss	-4.23E-02	1.18E-02	3.56E-04	0.959 (0.937, 0.981)	324803	Total population
Alzheimer's in mother	Weight gain compared to staying the same or weight loss	-3.12E-02	1.40E-02	2.63E-02	0.969 (0.943, 0.996)	316511	Total population
Alzheimer's in father	Weight gain compared to staying the same or weight loss	-3.78E-02	1.88E-02	4.37E-02	0.963 (0.928, 0.999)	307421	Total population

* Adjusted for age, sex and top 10 principal components

** CI = confidence interval

264

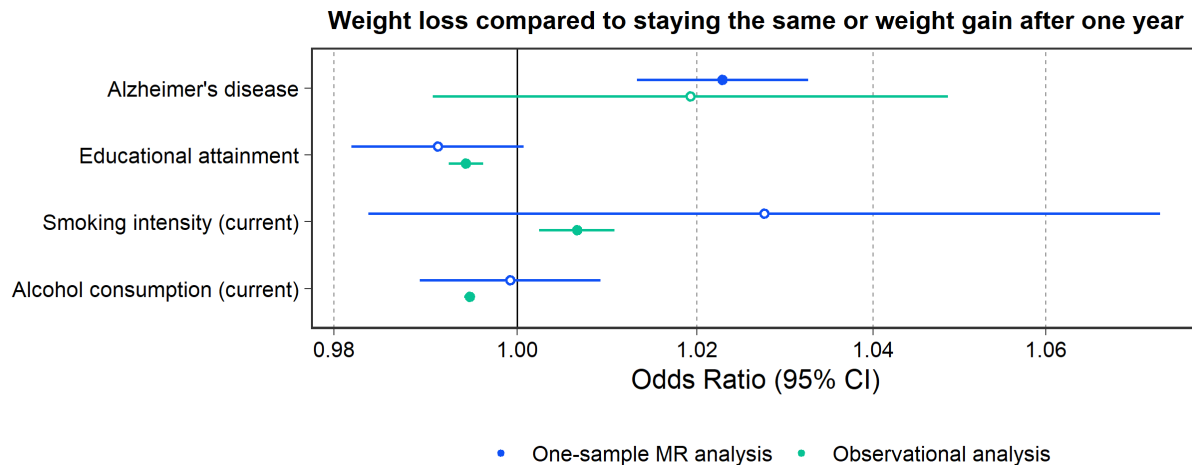
Table 2: One-sample Mendelian Randomization estimates for risk factors on weight loss compared to staying the same weight and weight gain and weight gain compared to staying the same and weight loss during midlife

Risk factor	Outcome	Coefficient*	SE	p Value	Odds Ratio (95% CI**)	Sample size	Population
Smoking heaviness	Weight loss compared to staying the same or weight gain	2.82E-02	0.011	8.12E-03	1.029 (1.007, 1.050)	150799	Ever smokers
Smoking heaviness	Weight loss compared to staying the same or weight gain	2.81E-02	0.012	2.03E-02	1.029 (1.004, 1.053)	116173	Previous smokers
Smoking heaviness	Weight loss compared to staying the same or weight gain	2.72E-02	0.022	2.21E-01	1.028 (0.984, 1.073)	32284	Current smokers
Alcohol consumption	Weight loss compared to staying the same or weight gain	-7.79E-04	0.005	8.78E-01	0.999 (0.989, 1.009)	312923	Ever drinkers
Educational attainment	Weight loss compared to staying the same or weight gain	-8.77E-03	0.005	7.04E-02	0.991 (0.864, 1.138)	329531	Total population
Alzheimer's genetic liability score	Weight loss compared to staying the same or weight gain	2.26E-02	0.005	2.67E-06	1.023 (1.013, 1.033)	329531	Total population
Smoking heaviness	Weight gain compared to staying the same or weight loss	-3.91E-03	0.009	6.52E-01	0.996 (0.979, 1.013)	150799	Ever smokers
Smoking heaviness	Weight gain compared to staying the same or weight loss	8.66E-03	0.010	3.76E-01	1.009 (0.991, 1.028)	116173	Previous smokers
Smoking heaviness	Weight gain compared to staying the same or weight loss	-5.03E-02	0.019	7.54E-03	0.951 (0.916, 0.987)	32284	Current smokers
Alcohol consumption	Weight gain compared to staying the same or weight loss	1.08E-05	0.004	9.98E-01	1.000 (0.992, 1.008)	312923	Ever drinkers
Educational attainment	Weight gain compared to staying the same or weight loss	-4.77E-02	0.004	< 2E-16	0.953 (0.946, 0.961)	329531	Total population
Alzheimer's genetic liability score	Weight gain compared to staying the same or weight loss	-2.76E-02	0.004	1.37E-11	0.973 (0.965, 0.981)	329531	Total population

* Adjusted for age, sex and top 10 principal components

** CI = confidence interval

265



266

267

268 **Figure 2A: A forest plot with estimates for risk factors on weight loss comparing results from one-**
269 **sample mendelian randomization (green) and associational (blue) analyses.** The outcome variable,
270 weight loss compared to staying the same and weight gain, comprises two tiers coded 0 (“No –
271 weight about the same” and “Yes – gained weight”) and 1 (“Yes – lost weight”). Dots filled-in
272 indicate some to very strong statistical evidence of an association and the exposure variable.
273 Alzheimer’s disease is presented on the continuous liability scale in one-sample MR and coded 0
274 (“Alzheimer’s disease in neither parent”) and 1 (“Alzheimer’s disease in either or both parents”)
275 in associational analyses.

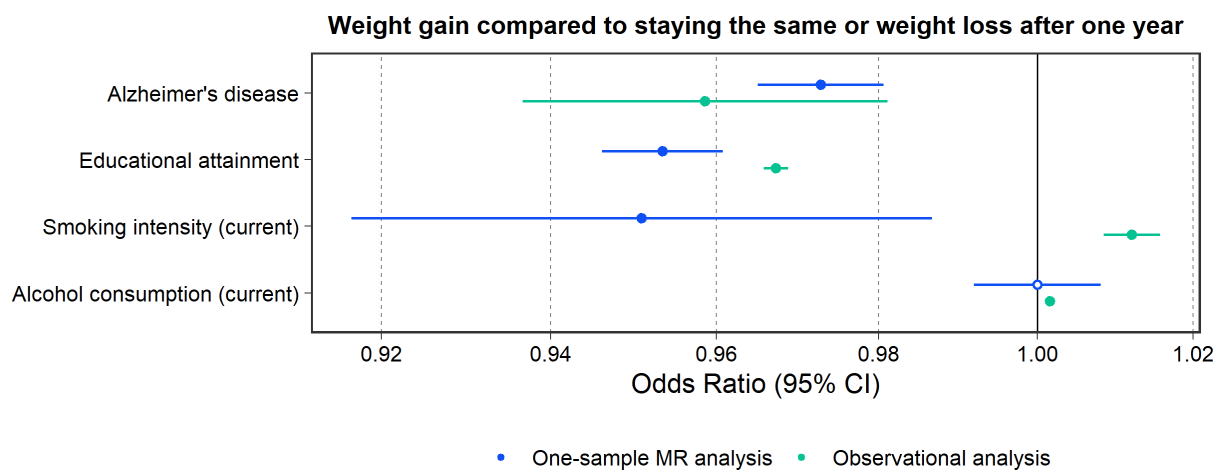
276

277 When considering weight gain, conventional observational analyses indicated strong evidence that
278 Alzheimer’s disease in either or both parents and educational attainment reduced odds of weight
279 gain compared to staying the same or weight loss (OR, 95% CI: 0.967, 0.966 to 0.969, $P < 2.00 \times 10^{-16}$
280 ¹⁶ and 0.959, 0.937 to 0.981, $P = 3.56 \times 10^{-4}$, respectively). There was also strong evidence that
281 smoking intensity (number of cigarettes smoked per day) in current smokers ($n = 33\,098$) and
282 alcohol consumption (units per day) in current drinkers ($n = 312\,923$) increased odds of weight gain

283 (OR, 95% CI: 1.005, 1.002 to 1.008, $P=0.002$ and 1.002, 1.001 to 1.002, $P=3.70 \times 10^{-13}$, respectively).

284 In contrast to conventional observational estimates, MR analyses provided little evidence of an
285 effect between alcohol consumption and weight gain in drinkers (OR, 95% CI: 1.000, 0.992 to
286 1.008, $P=0.998$) and the genetic instrument used for smoking heaviness suggested a decreasing
287 effect of smoking heaviness on weight gain in current smokers (OR, 95% CI: 0.951, 0.916 to 0.987,
288 $P=0.008$). In previous smokers, there was very little evidence that smoking heaviness had a
289 genetically predicted effect on higher odds of weight gain (OR, 95% CI: 1.009, 0.991 to 1.028,
290 $P=0.376$) (Table 1). The direction of the remaining effect estimates from one-sample MR were
291 similar to conventional observational estimates for most exposures (Figure 2B).

292



293

294 **Figure 2B: A forest plot with estimates for risk factors on weight gain comparing results from one-**
295 **sample mendelian randomization (green) and associational (blue) analyses.** The outcome variable,
296 weight gain compared to staying the same and weight loss, comprises two tiers coded 0 (“No –
297 weight about the same” and “Yes – lost weight”) and 1 (“Yes – gained weight”). Dots filled-in
298 indicate some to very strong statistical evidence of an association and the exposure variable.
299 Alzheimer’s disease is presented on the continuous liability scale in one-sample MR and coded 0

300 (“Alzheimer’s disease in neither parent”) and 1 (“Alzheimer’s disease in either or both parents”)
 301 in associational analyses.

302

303 *Collider bias*

304

305 The directions of effects remain consistent with the main results, however, since including
 306 additional variables into IPW models reduced sample sizes, the precision of these estimates is
 307 likely to have been impacted which is reflected in corresponding confidence intervals (Table 3).

Table 3: Inverse probability weighted one-sample Mendelian Randomisation estimates for smoking intensity and alcohol consumption on weight change during midlife

Risk factor	Outcome	Coefficient	Standard error	p Value	Odds Ratio (95% CI**)	Sample size	Population
Smoking intensity	Weight loss compared to staying the same or weight gain	0.030	0.007	1.88E-05	1.030 (1.017, 1.045)	12498 9	Ever smokers
Smoking intensity	Weight loss compared to staying the same or weight gain	0.026	0.008	8.07E-04	1.026 (1.011, 1.042)	10666 6	Previous smokers
Smoking intensity	Weight loss compared to staying the same or weight gain	0.068	0.030	2.47E-02	1.070 (1.009, 1.135)	7669	Current smokers
Alcohol consumption	Weight loss compared to staying the same or weight gain	-0.006	0.005	2.50E-01	0.994 (0.984, 1.004)	20170 9	Ever drinkers
Smoking intensity	Weight gain compared to staying the same or weight loss	0.005	0.006	3.53E-01	1.005 (0.994, 1.071)	12498 9	Ever smokers

Smoking intensity	Weight gain compared to staying the same or weight loss	0.012	0.006	6.55E-02	1.012 (0.999, 1.024)	10666 6	Previous smokers
Smoking intensity	Weight gain compared to staying the same or weight loss	-0.038	0.024	1.16E-01	0.963 (0.919, 1.009)	7669	Current smokers
Alcohol consumption	Weight gain compared to staying the same or weight loss	0.001	0.004	8.08E-01	1.001 (0.993, 1.009)	20170 9	Ever drinkers

* Adjusted for age, sex and top 10 principal components

** CI = confidence interval

308

309 *Validation*

310

311 There was strong evidence that weight loss and weight gain during midlife conferred a heightened
 312 risk of all-cause mortality (OR, 95% CI: 1.393, 1.341 to 1.448, $P < 2.00 \times 10^{-16}$ and OR, 95% CI: 1.201,
 313 1.161 to 1.241, $P < 2.00 \times 10^{-16}$, respectively) (Table 4). These results are consistent with previous
 314 studies (3-5).

315

Table 4: Observational estimates for weight gain and weight loss on all-cause mortality

Risk factor	Coefficient*	SE	p Value	Multinomial Odds Ratio (95% CI**)	Sample size
Weight gain during midlife	0.183	0.017	$< 2E-16$	1.201 (1.161, 1.241)	279269
Weight loss during midlife	0.332	0.020	$< 2E-16$	1.393 (1.341, 1.448)	237474

* Adjusted for age, sex and top 10 principal components

** CI = confidence interval

316

317

318 *Sensitivity analyses*

319

320 Findings from the two-sample MR weighted median and MR-Egger methods revealed similar
321 trends to one-sample MR. This suggests little evidence that horizontal pleiotropy is driving our
322 results, with the exception of the genetically predicted effect of alcohol consumption and
323 educational attainment on weight loss, which did not support estimates from the original analysis.
324 MR leave one out analysis showed that when ‘rs12972156’, located at the APOE locus on
325 chromosome 19, is left out, the effect estimates for genetically predicted Alzheimer’s disease
326 liability on weight change over a one-year interval in midlife remained very close to the original
327 two-sample results (Supplementary Table S2). Results indicated similar trends within the group
328 reporting no major dietary changes in the last 5 years, compared to the total population
329 (Supplementary Table S3). Whilst not a direct indicator, we may infer, with caution, that weight
330 change in this study is indicative of unintentional weight change, as opposed to intentional weight
331 change.

332

333 **Discussion:**

334

335 In this study, conventional observational results indicated evidence of an association between
336 educational attainment, Alzheimer’s disease family history, smoking intensity and alcohol
337 consumption and weight change (gain and/or loss) over a one-year interval in midlife. The
338 *directions* of effect within an MR setting were consistent with conventional observational
339 estimates for educational attainment, Alzheimer’s disease liability, and alcohol consumption,
340 though not smoking heaviness. Furthermore, the strength of these effects varied. IPW was used
341 to account for non-random selection on smoking and alcohol status and indicated results were
342 largely robust to collider bias.

343

344 Findings on educational attainment in our study were consistent with *a priori* expectations derived
345 from previous studies. Specifically, evidence suggesting an association between educational
346 attainment and lower odds of weight gain, which has been observed in studies conducted in high-
347 income countries (16). Since educational attainment was also associated with reduced weight loss
348 in our study, a known risk factor in clinical settings for various cancers and gastrointestinal
349 diseases, for example, receiving higher education may consequently relate to reduced risk of
350 mortality. In addition, results for educational attainment should partially be interpreted as a proxy
351 for socioeconomic position and resource availability, as well as health and wellness promoting
352 behaviours. Education influences weight-related actions such as diet and physical activity, thus
353 affecting energy balance. If health behaviours of this kind persist, an imbalance has the potential
354 to accumulate over time.

355
356 Alzheimer's disease liability was a predictor of weight loss in our analyses. Importantly, using the
357 APOE variant as a genetic instrument for Alzheimer's disease liability may be less prone to
358 misclassification than reported family history, which could explain the narrower confidence
359 intervals when comparing conventional observational and MR estimates for this exposure. This
360 result was supported using a two-sample MR leave one out analysis. Here we found removal of
361 the 'rs12972156' genetic variant, located at the APOE locus, revealed the same direction of effect
362 as our one-sample results. Whilst it is widely recognised that unintentional body weight loss is
363 common in patients with dementia (17), the literature around whether weight loss may accelerate
364 before the diagnosis of dementia is inconsistent and conflicting, further illustrating the presence
365 of confounding in conventional epidemiological analyses (2). Our results are in line with previous
366 research that shows that weight loss in midlife may come before a dementia diagnosis in later life
367 (2, 39). Importantly, Alzheimer's disease liability in this study in a conventional observational
368 setting is based on family history data, whereas MR estimates are derived using genetic variants
369 which may exert lifelong effects on disease risk. As such, it is challenging to directly compare the
370 magnitudes of effect between these two types of analyses under the gene-
371 environment equivalence assumption.

372
373 Conventional epidemiological analyses regarding alcohol consumption indicated that an increase in
374 alcohol use was associated with weight *gain*. MR estimates, however, were much weaker. This
375 may be in part due to our outcome measuring weight change over a one-year interval in midlife,
376 assuming that on average, those that drink in this age group have been doing so for a considerable

377 length of time. Thus, weight change as a result of drinking is likely to have had a substantial effect
378 already. Conventional observational evidence of an impact within one-year is therefore potentially
379 misleading, since this may be a result of confounding factors associated with alcohol consumption
380 in midlife (40). Whilst conventional epidemiological analyses indicated an association between
381 smoking intensity and weight gain over a one-year interval in midlife within current smokers, one-
382 sample MR analyses were in line with the literature supporting an inverse relationship between
383 current cigarette smoking and body weight (8, 41), suggesting evidence of an effect between
384 smoking heaviness and reduced weight gain. In addition, having been a heavier smoker previously
385 has been reported to lead to greater weight gain amongst previous smokers (41). Higher levels of
386 BMI have also been reported to increase risk of smoking uptake as well as intensity of smoking
387 (13). This highlights the need to combine weight control and smoking cessation strategies within
388 interventions aimed at tackling these important public health concerns. To reiterate, careful
389 consideration is required if stratifying a population into subgroups when conducting MR analyses,
390 to evaluate when collider bias may have been introduced. We express the importance of adjusting
391 for this using IPW (34).

392
393 Malignancies, non-malignant organic and psychiatric disorders constitute the main etiologic
394 groups of unintentional weight loss (42). Weight loss is therefore often used clinically as an early
395 indicator of the presence of disease. Our results, as well as findings from the Whitehall Study, a
396 large cohort comprising male participants working in civil service offices aged 40-64 years
397 (n=17,718), indicate that mortality is much greater in those that had reported weight loss over
398 one-year compared to those that had not (4). Our results additionally show that weight gain is

399 associated with mortality, though the effect is half the size of that of weight loss. Since both the
400 UK Biobank and Whitehall Study consist of healthy populations due to the healthy volunteer and
401 healthy worker effect, we expect these associations to be stronger in the general population.

402

403 *Strengths and limitations*

404

405 Conventional epidemiological analyses have previously been conducted alongside MR to compare
406 findings; however, this study is distinctive in that it assesses a time varying outcome; weight
407 change over a one-year interval in midlife. This study also utilises additional sensitivity analyses
408 through weighted median and MR-Egger methods in two-sample MR to strengthen the level of
409 inference indicated in univariable results.

410

411 Important limitations exist in this investigation, however. Firstly, the outcome is a self-reported
412 measure of perceived weight change over a one-year interval in midlife. Individuals with certain
413 characteristics, including higher educational attainment, may be more likely to misreport their
414 weight, indicating the potential for recall bias and thus differential misclassification (43). Secondly,
415 the outcome used does not demonstrate weight change over a substantial period of time (i.e.,
416 more than one year) since the focus of this study is to examine recent and rapid weight change
417 during midlife. Additionally, we do not have data on whether an individual changed their smoking
418 or drinking throughout the year in which we examine their weight change. A further key limitation
419 of this study is selection bias and thus limited generalisability. Participants in the UK Biobank are
420 older, more likely to be female and less likely to live in socially deprived areas, compared to

421 participants in nationally representative data sources (44). In addition, previous MR studies
422 suggest that longer educational duration and older menarche relate to higher participation, whilst
423 a genetic liability of neuroticism, Alzheimer’s disease and schizophrenia reduce participation (45).
424 Finally, (i) selection on smoking and alcohol use, and (ii) stratification by smoking status, may have
425 induced collider bias (34). Whilst IPW was conducted to account for this, including additional
426 variables to generate weights resulted in smaller sample sizes and thus reduced power and
427 precision in our IPW estimates.

428

429 **Conclusion:**

430

431 This investigation provides novel evidence of the effects of lifestyle risk factors, educational
432 attainment, and Alzheimer’s disease liability on weight changes over a one-year interval in midlife.

433 Results suggest that individuals who attended higher education may have more opportunity to

434 help retain a steady weight during this stage in the lifecourse. At the same time, findings may have

435 implications for early testing for Alzheimer’s disease, amongst other disease conditions, when

436 weight loss is observed at midlife. The relationship between smoking intensity and weight change

437 is complex, endorsing the notion that strategies to tackle weight control and smoking cessation

438 should be combined.

439

440

441 List of abbreviations

442

443

BMI	Body mass index
CI	Confidence interval
IPW	Inverse Probability Weighting
MR	Mendelian randomization
OR	Odds ratio

444

445 **Declarations**

446

447 **Ethics approval and consent to participate:** The UK Biobank study have obtained ethics approval
448 from the Research Ethics Committee (REC; approval number: 11/NW/0382). The primary data
449 from the UK Biobank resource that support the findings of this study are accessible upon
450 application (<https://www.ukbiobank.ac.uk/>).

451

452 **Consent for publication:** Not applicable.

453

454 **Availability of data and materials:** The primary data from the UK Biobank resource that support
455 the findings of this study are accessible upon application (<https://www.ukbiobank.ac.uk/>).

456

457 **Competing interests:** I have read the journal's policy and the authors of this manuscript have the
458 following competing interests: TGR is employed part-time by Novo Nordisk outside of this work.
459 All other authors declare no competing interests.

460

461 **Funding:** This work was in part supported by the MRC Integrative Epidemiology Unit which receives
462 funding from the UK Medical Research Council and the University of Bristol [MC_UU_00011/1].
463 GDS conducts research at the National Institute for Health Research Biomedical Research Centre
464 at the University Hospitals Bristol National Health Service (NHS) Foundation Trust and the
465 University of Bristol. The views expressed in this publication are those of the author(s) and not
466 necessarily those of the NHS, the National Institute for Health Research, or the Department of
467 Health. GMP is supported by the GW4 Biomed Doctoral Training Programme, awarded to the
468 Universities of Bath, Bristol, Cardiff, and Exeter from the Medical Research Council/UK Research
469 and Innovation [MR/N0137941/1]. TGR was a UK Research and Innovation Research Fellow while
470 contributing to this study [MR/S003886/1]. JT is supported by an Academy of Medical Sciences
471 Springboard award, which is supported by the Academy of Medical Sciences, the Wellcome Trust,
472 GCRF, the Government Department of Business, Energy and Industrial Strategy, the British Heart
473 Foundation and Diabetes UK [SBF004Ä1079]. SF is supported by a Wellcome Trust PhD studentship

474 in Molecular, Genetic and Lifecourse Epidemiology [108902/Z/15/Z]. AG is supported by the UK
475 Medical Research Council and the University of Bristol [MC_UU_00011/3]. The funders had no role
476 in study design, data collection and analysis, decision to publish, or preparation of the manuscript.

477
478 **Authors' contributions:** GMP conducted all analyses and drafted the manuscript. GDS and TGR
479 conceived the study design, obtained funding, and supervised the project. JT, AG and JH provided
480 support and statistical advice on analyses conducted. SF helped clean data and derived a summary
481 variable. All authors helped refine the final version of the manuscript and approve with its
482 submission.

483
484 **Acknowledgments** We would like to thank the UK Biobank study and participants who contributed
485 to it (app #76538).

486 **References**

487

- 488 1. Wilson PW, Kannel WB. Obesity, diabetes, and risk of cardiovascular disease in the
489 elderly. *Am J Geriatr Cardiol.* 2002;11(2):119-23,25.
- 490 2. Knopman DS, Edland SD, Cha RH, Petersen RC, Rocca WA. Incident dementia in women
491 is preceded by weight loss by at least a decade. *Neurology.* 2007;69(8):739-46.
- 492 3. Chen C, Ye Y, Zhang Y, Pan XF, Pan A. Weight change across adulthood in relation to all
493 cause and cause specific mortality: prospective cohort study. *BMJ.* 2019;367:l5584.
- 494 4. Davey Smith G, Shipley MJ, Marmot MG, Rose G. Plasma cholesterol concentration and
495 mortality. The Whitehall Study. *Jama.* 1992;267(1):70-6.
- 496 5. Zheng Y, Manson JE, Yuan C, Liang MH, Grodstein F, Stampfer MJ, et al. Associations of
497 Weight Gain From Early to Middle Adulthood With Major Health Outcomes Later in Life. *JAMA.*
498 2017;318(3):255-69.
- 499 6. Davey Smith G, Holmes MV, Davies NM, Ebrahim S. Mendel's laws, Mendelian
500 randomization and causal inference in observational data: substantive and nomenclatural
501 issues. *European Journal of Epidemiology.* 2020;35(2):99-111.
- 502 7. Richmond RC, Davey Smith G. Mendelian Randomization: Concepts and Scope. *Cold
503 Spring Harb Perspect Med.* 2021.
- 504 8. Sneve M, Jorde R. Cross-sectional study on the relationship between body mass index
505 and smoking, and longitudinal changes in body mass index in relation to change in smoking
506 status: the Tromso Study. *Scand J Public Health.* 2008;36(4):397-407.
- 507 9. Dare S, Mackay DF, Pell JP. Relationship between smoking and obesity: a cross-sectional
508 study of 499,504 middle-aged adults in the UK general population. *PLoS One.*
509 2015;10(4):e0123579.
- 510 10. Mozaffarian D, Hao T, Rimm EB, Willett WC, Hu FB. Changes in diet and lifestyle and
511 long-term weight gain in women and men. *N Engl J Med.* 2011;364(25):2392-404.
- 512 11. Wang L, Lee IM, Manson JE, Buring JE, Sesso HD. Alcohol consumption, weight gain, and
513 risk of becoming overweight in middle-aged and older women. *Archives of internal medicine.*
514 2010;170(5):453-61.
- 515 12. Wilson C. Light-to-moderate alcohol consumption may reduce weight gain in middle-
516 aged or older women. *Nature Reviews Endocrinology.* 2010;6(7):353-.
- 517 13. Carreras-Torres R, Johansson M, Haycock PC, Relton CL, Davey Smith G, Brennan P, et al.
518 Role of obesity in smoking behaviour: Mendelian randomisation study in UK Biobank. *BMJ.*
519 2018;361:k1767-k.
- 520 14. Rohrmann S, Steinbrecher A, Linseisen J, Hermann S, May A, Luan J, et al. The
521 association of education with long-term weight change in the EPIC-PANACEA cohort. *Eur J Clin
522 Nutr.* 2012;66(8):957-63.
- 523 15. Backholer K, Mannan HR, Magliano DJ, Walls HL, Stevenson C, Beauchamp A, et al.
524 Projected socioeconomic disparities in the prevalence of obesity among Australian adults. *Aust
525 N Z J Public Health.* 2012;36(6):557-63.
- 526 16. Cohen AK, Rai M, Rehkopf DH, Abrams B. Educational attainment and obesity: a
527 systematic review. *Obes Rev.* 2013;14(12):989-1005.

- 528 17. Tamura BK, Masaki KH, Blanchette P. Weight loss in patients with Alzheimer's disease. *J*
529 *Nutr Elder*. 2007;26(3-4):21-38.
- 530 18. Tudball MJ, Bowden J, Hughes RA, Ly A, Munafò MR, Tilling K, et al. Mendelian
531 randomisation with coarsened exposures. *Genet Epidemiol*. 2021;45(3):338-50.
- 532 19. Davey Smith G. Post-Modern Epidemiology: When Methods Meet Matter. *American*
533 *Journal of Epidemiology*. 2019;188(8):1410-9.
- 534 20. Sudlow C, Gallacher J, Allen N, Beral V, Burton P, Danesh J, et al. UK Biobank: An Open
535 Access Resource for Identifying the Causes of a Wide Range of Complex Diseases of Middle and
536 Old Age. *PLOS Medicine*. 2015;12(3):e1001779.
- 537 21. Field AE, Aneja P, Rosner B. The validity of self-reported weight change among
538 adolescents and young adults. *Obesity (Silver Spring)*. 2007;15(9):2357-64.
- 539 22. Bycroft C, Freeman C, Petkova D, Band G, Elliott LT, Sharp K, et al. The UK Biobank
540 resource with deep phenotyping and genomic data. *Nature*. 2018;562(7726):203-9.
- 541 23. NHS. Calculating Alcohol Units [Available from: [https://www.nhs.uk/live-well/alcohol-](https://www.nhs.uk/live-well/alcohol-support/calculating-alcohol-units/)
542 [support/calculating-alcohol-units/](https://www.nhs.uk/live-well/alcohol-support/calculating-alcohol-units/)].
- 543 24. Lee JJ, Wedow R, Okbay A, Kong E, Maghzian O, Zacher M, et al. Gene discovery and
544 polygenic prediction from a genome-wide association study of educational attainment in 1.1
545 million individuals. *Nature Genetics*. 2018;50(8):1112-21.
- 546 25. Nevo D, Ogino S, Wang M. Reflection on modern methods: causal inference
547 considerations for heterogeneous disease etiology. *Int J Epidemiol*. 2021;50(3):1030-7.
- 548 26. Chang CC, Chow CC, Tellier LC, Vattikuti S, Purcell SM, Lee JJ. Second-generation PLINK:
549 rising to the challenge of larger and richer datasets. *Gigascience*. 2015;4:7-.
- 550 27. Liu M, Jiang Y, Wedow R, Li Y, Brazel DM, Chen F, et al. Association studies of up to 1.2
551 million individuals yield new insights into the genetic etiology of tobacco and alcohol use.
552 *Nature Genetics*. 2019;51(2):237-44.
- 553 28. Okbay A, Beauchamp JP, Fontana MA, Lee JJ, Pers TH, Rietveld CA, et al. Genome-wide
554 association study identifies 74 loci associated with educational attainment. *Nature*.
555 2016;533(7604):539-42.
- 556 29. Lambert JC, Ibrahim-Verbaas CA, Harold D, Naj AC, Sims R, Bellenguez C, et al. Meta-
557 analysis of 74,046 individuals identifies 11 new susceptibility loci for Alzheimer's disease. *Nat*
558 *Genet*. 2013;45(12):1452-8.
- 559 30. Abecasis GR, Auton A, Brooks LD, DePristo MA, Durbin RM, Handsaker RE, et al. An
560 integrated map of genetic variation from 1,092 human genomes. *Nature*. 2012;491(7422):56-
561 65.
- 562 31. Munafò MR, Timofeeva MN, Morris RW, Prieto-Merino D, Sattar N, Brennan P, et al.
563 Association Between Genetic Variants on Chromosome 15q25 Locus and Objective Measures of
564 Tobacco Exposure. *JNCI: Journal of the National Cancer Institute*. 2012;104(10):740-8.
- 565 32. Liu JZ, Tozzi F, Waterworth DM, Pillai SG, Muglia P, Middleton L, et al. Meta-analysis and
566 imputation refines the association of 15q25 with smoking quantity. *Nat Genet*. 2010;42(5):436-
567 40.
- 568 33. Millard LAC, Munafò MR, Tilling K, Wootton RE, Davey Smith G. MR-pheWAS with
569 stratification and interaction: Searching for the causal effects of smoking heaviness identified
570 an effect on facial aging. *PLoS Genet*. 2019;15(10):e1008353.

- 571 34. Hughes RA, Davies NM, Davey Smith G, Tilling K. Selection Bias When Estimating
572 Average Treatment Effects Using One-sample Instrumental Variable Analysis. *Epidemiology*.
573 2019;30(3).
- 574 35. Gkatzionis A, Burgess S. Contextualizing selection bias in Mendelian randomization: how
575 bad is it likely to be? *International Journal of Epidemiology*. 2019;48(3):691-701.
- 576 36. Hemani G, Zheng J, Elsworth B, Wade KH, Haberland V, Baird D, et al. The MR-Base
577 platform supports systematic causal inference across the human phenome. *Elife*. 2018;7.
- 578 37. Bowden J, Davey Smith G, Haycock PC, Burgess S. Consistent Estimation in Mendelian
579 Randomization with Some Invalid Instruments Using a Weighted Median Estimator. *Genet*
580 *Epidemiol*. 2016;40(4):304-14.
- 581 38. Ginestet C. ggplot2: Elegant Graphics for Data Analysis. *J R Stat Soc a Stat*.
582 2011;174:245-.
- 583 39. Johnson DK, Wilkins CH, Morris JC. Accelerated Weight Loss May Precede Diagnosis in
584 Alzheimer Disease. *Archives of Neurology*. 2006;63(9):1312-7.
- 585 40. Werneck AO, Oyeyemi AL, Szwarcwald CL, Silva DR. Association between physical
586 activity and alcohol consumption: sociodemographic and behavioral patterns in Brazilian adults.
587 *J Public Health (Oxf)*. 2019;41(4):781-7.
- 588 41. Piirtola M, Jelenkovic A, Latvala A, Sund R, Honda C, Inui F, et al. Association of current
589 and former smoking with body mass index: A study of smoking discordant twin pairs from 21
590 twin cohorts. *PLOS ONE*. 2018;13(7):e0200140.
- 591 42. Bosch X, Monclús E, Escoda O, Guerra-García M, Moreno P, Guasch N, et al.
592 Unintentional weight loss: Clinical characteristics and outcomes in a prospective cohort of 2677
593 patients. *PloS one*. 2017;12(4):e0175125-e.
- 594 43. Stommel M, Schoenborn CA. Accuracy and usefulness of BMI measures based on self-
595 reported weight and height: findings from the NHANES & NHIS 2001-2006. *BMC Public Health*.
596 2009;9:421.
- 597 44. Sekula P, Del Greco M F, Pattaro C, Köttgen A. Mendelian Randomization as an
598 Approach to Assess Causality Using Observational Data. *Journal of the American Society of*
599 *Nephrology*. 2016;27(11):3253-65.
- 600 45. Tyrrell J, Zheng J, Beaumont R, Hinton K, Richardson TG, Wood AR, et al. Genetic
601 predictors of participation in optional components of UK Biobank. *Nat Commun*.
602 2021;12(1):886.
- 603
- 604

605 FIGURES

606

607 **Figure 1: Directed acyclic graphs indicating potential collider bias.** Collider bias could be
608 encountered in this study when selecting participants based on smoking and alcohol drinking
609 status in the UK Biobank (A) and collider bias could be encountered in this study when stratifying
610 on participants' smoking status in the UK Biobank (B).

611

612 **Figure 2A: A forest plot with estimates for risk factors on weight loss comparing results from one-**
613 **sample mendelian randomization (green) and associational (blue) analyses.** The outcome variable,
614 weight loss compared to staying the same and weight gain, comprises two tiers coded 0 ("No –
615 weight about the same" and "Yes – gained weight") and 1 ("Yes – lost weight"). Dots filled-in
616 indicate some to very strong statistical evidence of an association and the exposure variable.
617 Alzheimer's disease is presented on the continuous liability scale in one-sample MR and coded 0
618 ("Alzheimer's disease in neither parent") and 1 ("Alzheimer's disease in either or both parents")
619 in associational analyses.

620 **Figure 2B: A forest plot with estimates for risk factors on weight gain comparing results from one-**
621 **sample mendelian randomization (green) and associational (blue) analyses.** The outcome variable,
622 weight gain compared to staying the same and weight loss, comprises two tiers coded 0 ("No –
623 weight about the same" and "Yes – lost weight") and 1 ("Yes – gained weight"). Dots filled-in
624 indicate some to very strong statistical evidence of an association and the exposure variable.
625 Alzheimer's disease is presented on the continuous liability scale in one-sample MR and coded 0
626 ("Alzheimer's disease in neither parent") and 1 ("Alzheimer's disease in either or both parents")
627 in associational analyses.

628

629