

1 **Title:**

2 **Surveillance of SARS-CoV-2 variants in Argentina: detection of Alpha, Gamma, Lambda,**  
3 **Epsilon and Zeta in locally transmitted and imported cases**

4

5 ***Short communication***

6

7 **Authors:**

8 Torres Carolina<sup>1,2,\*</sup>, Mojsiejczuk Laura<sup>1,2,\*</sup>, Acuña Dolores<sup>2,3,\*</sup>, Alexay Sofía<sup>3,\*</sup>, Amadio Ariel<sup>2,4,§</sup>,  
9 Aulicino Paula<sup>2,5,§</sup>, Debat Humberto<sup>6,§</sup>, Fernández Franco<sup>6,§</sup>, Goya Stephanie<sup>3,§</sup>, König Guido<sup>7,§</sup>,  
10 Nabaes Jodar Mercedes<sup>2,3,§</sup>, Pianciola Luis<sup>8,§</sup>, Bengoa Sofía<sup>7,#</sup>, Cacciahue Marco<sup>7,#</sup>, Camussone  
11 Cecilia<sup>4,#</sup>, Dus Santos María José<sup>9,10,#</sup>, Eberhardt María Florencia<sup>2,4,#</sup>, Fernandez Ailen<sup>8,#</sup>,  
12 Gismondi María Inés<sup>7,11,#</sup>, Irazoqui Matías<sup>2,4,#</sup>, Lusso Silvina<sup>3,#</sup>, Marquez Nathalie<sup>6,#</sup>, Muñoz  
13 Marianne<sup>12,#</sup>, Natale Mónica<sup>3,#</sup>, Pisano Belén<sup>2,13,#</sup>, Puebla Andrea<sup>12,#</sup>, Re Viviana<sup>2,13,#</sup>, Sosa  
14 Ezequiel<sup>14,#</sup>, Zaiat Jonathan<sup>14,#</sup>, Zunino Sebastián<sup>11,15,#</sup>, Do porto Darío<sup>14,#</sup>, Acevedo María  
15 Elina<sup>3,&</sup>, Alvarez Lopez Cristina<sup>3,&</sup>, Álvarez María Laura<sup>16,&</sup>, Angeleri Patricia<sup>17,&</sup>, Angelletti  
16 Andrés<sup>18,19,&</sup>, Arca Manuel<sup>20,&</sup>, Barbas Gabriela<sup>21,&</sup>, Bertone Ana<sup>37,&</sup>, Bonnet Agustina<sup>20,&</sup>,  
17 Bourlot Ignacio<sup>31,&</sup>, Castello Alejandro<sup>22,&</sup>, Castro Gonzalo<sup>23,&</sup>, Ceriani Carolina<sup>24,&</sup>, Cimino  
18 Carlos<sup>25,&</sup>, Cipelli Julián<sup>3,&</sup>, Colmeiro María<sup>19,&</sup>, Cordero Andrés<sup>18,&</sup>, Cristina Carolina<sup>26,&</sup>, Di Bella  
19 Sofia<sup>19,&</sup>, Ercole Regina<sup>19,&</sup>, Espasandin Yesica<sup>16,&</sup>, Espul Carlos<sup>27,&</sup>, Falaschi Andrea<sup>27,&</sup>,  
20 Fernandez Moll Facundo<sup>26,&</sup>, Gatelli Andrea<sup>19,&</sup>, Goñi Sandra<sup>22,&</sup>, Jofré María Estela<sup>28,&</sup>, Jaramillo  
21 José<sup>15,&</sup>, Labarta Natalia<sup>3,&</sup>, Lacaze María Agustina<sup>29,&</sup>, Larreche Rocio<sup>28,&</sup>, Leiva Viviana<sup>28,&</sup>, Levin  
22 Gustavo<sup>31,&</sup>, Luczak Erica<sup>32,&</sup>, Mandile Marcelo<sup>22,&</sup>, Massone Carla<sup>15,&</sup>, Mazzeo Melina<sup>8,&</sup>,  
23 Medina Carla<sup>3,&</sup>, Monaco Belén<sup>15,&</sup>, Montoto Luciana<sup>33,&</sup>, Mugna Viviana<sup>34,&</sup>, Musto  
24 Alejandra<sup>32,&</sup>, Ojeda Guillermo<sup>34,&</sup>, Pintos Carolina<sup>8,&</sup>, Pozzati Marcia<sup>35,&</sup>, Rahhal Marilina<sup>36,&</sup>,  
25 Rechimont Claudia<sup>37,&</sup>, Remes Lenicov Federico<sup>38,&</sup>, Rompató Gabriela<sup>34,&</sup>, Seery Vanesa<sup>38,&</sup>, Siri  
26 Leticia<sup>31,&</sup>, Spina Julieta<sup>39,&</sup>, Streitenberger Cintia<sup>3,&</sup>, Suárez Ariel<sup>40,&</sup>, Suárez Jorgelina<sup>26,&</sup>,  
27 Sujanski Paula<sup>17,&</sup>, Talia Juan Manuel<sup>29,&</sup>, Theaux Clara<sup>41,&</sup>, Thomas Guillermo<sup>3,&</sup>, Ticeira  
28 Marina<sup>28,&</sup>, Tittarelli Estefanía<sup>40,&</sup>, Toro Rosana<sup>18,&</sup>, Uez Osvaldo<sup>25,&</sup>, Zaffanella María Belén<sup>39,&</sup>,  
29 Ziehm Cecilia<sup>8,&</sup>, Zubieta Martin<sup>36,&</sup>, on behalf of PAIS Consortium<sup>∞</sup>, Mistchenko Alicia<sup>3,42</sup>,  
30 Valinotto Laura<sup>2,3</sup>, Viegas Mariana<sup>2,3</sup>, @

31 \*, §, #, & equally contributing authors

32 @ corresponding author

33 <sup>∞</sup><http://pais.qb.fcen.uba.ar/>

- 34 1. Universidad de Buenos Aires, Facultad de Farmacia y Bioquímica, Instituto de  
35 Investigaciones en Bacteriología y Virología Molecular (IBaViM), Buenos Aires, Argentina.
- 36 2. Consejo Nacional de Investigaciones Científicas y Técnicas (CONICET), Buenos Aires,  
37 Argentina.
- 38 3. Laboratorio de Virología, Hospital de Niños Dr. Ricardo Gutiérrez, CABA, Argentina.
- 39 4. Instituto de Investigación de la Cadena Láctea (IDICAL) INTA-CONICET. Ruta 34 km 227,  
40 Rafaela (2300), Santa Fe, Argentina.
- 41 5. Laboratorio de Biología Celular y Retrovirus. Hospital de Pediatría "Prof. Juan P. Garrahan",  
42 CABA, Argentina.
- 43 6. Instituto de Patología Vegetal – Centro de Investigaciones Agropecuarias – Instituto  
44 Nacional de Tecnología Agropecuaria (IPAVE-CIAP-INTA), Camino 60 Cuadras Km 5,5  
45 (X5020ICA), Córdoba, Argentina.
- 46 7. Instituto de Biotecnología/Instituto de Agrobiotecnología y Biología Molecular (INTA-  
47 CONICET), Hurlingham, Buenos Aires, Argentina.
- 48 8. Laboratorio Central ciudad de Neuquén, Ministerio de Salud, Neuquén, Argentina.
- 49 9. Instituto de Virología e Innovaciones Tecnológicas (INTA-CONICET), Hurlingham, Buenos  
50 Aires, Argentina.
- 51 10. Laboratorio de Diagnóstico-UNIDAD COVID- Universidad Nacional de Hurlingham,  
52 Hurlingham, Buenos Aires, Argentina.
- 53 11. Universidad Nacional de Luján, Departamento de Ciencias Básicas, Argentina. Ruta  
54 Nacional 5 y Av. Constitución, 6700, Luján.
- 55 12. Unidad de Genómica del Instituto de Biotecnología/Instituto de Agrobiotecnología y  
56 biología Molecular (INTA-CONICET), Hurlingham, Buenos Aires, Argentina.
- 57 13. Instituto de Virología "Dr. J. M. Vanella", Facultad de Ciencias Médicas, Universidad  
58 Nacional de Córdoba.
- 59 14. Instituto de Química Biológica de la Facultad de Ciencias Exactas y Naturales (IQUIBICEN),  
60 CONICET, Ciudad de Buenos Aires, Argentina.
- 61 15. Laboratorio de Virología Molecular, Hospital Blas L. Dubarry de Mercedes, provincia de  
62 Buenos Aires, Argentina.
- 63 16. Laboratorio del Hospital Zonal Dr. Ramón Carrillo, San Carlos De Bariloche, provincia de Río  
64 Negro, Argentina
- 65 17. Comité Operativo de Emergencia COVID, Ministerio de Salud de la Ciudad Autónoma de  
66 Buenos Aires, Argentina.
- 67 18. Laboratorio de salud pública, Facultad de Ciencias Exactas, UNLP, La Plata, Provincia de  
68 Buenos Aires, Argentina.

- 69 19. Laboratorio de Virología, HIEAyC "San Juan de Dios", La Plata, provincia de Buenos Aires,  
70 Argentina.
- 71 20. Laboratorio de Virología del Hospital JJ Urquiza, Concepción del Uruguay, provincia de  
72 Entre Ríos, Argentina
- 73 21. Secretaria de Prevención y Promoción, Ministerio de Salud de la provincia de Córdoba,  
74 Argentina.
- 75 22. Plataforma de Servicios Biotecnológicos; UTTIPP/PSB, Bernal, provincia de Buenos Aires,  
76 Argentina.
- 77 23. Laboratorio Central de la Provincia de Córdoba, Ministerio de Salud la provincia de  
78 Córdoba, Argentina.
- 79 24. Laboratorio de Virología de la Facultad de Veterinaria de la Universidad Nacional del  
80 Centro de la provincia de Buenos Aires (UNCPBA), Tandil, provincia de Buenos Aires,  
81 Argentina.
- 82 25. Instituto Nacional de Epidemiología "Dr. Jara" (Mar del Plata, provincia de Buenos Aires,  
83 Argentina.
- 84 26. Centro de Investigaciones Básicas y Aplicadas, UNNOBA, Junín, provincia de Buenos Aires,  
85 Argentina.
- 86 27. Dirección de epidemiología y Red de Laboratorios del Ministerio de Salud de la provincia  
87 de Mendoza, Argentina.
- 88 28. Laboratorio de Biología Molecular Bolívar, LABBO, Bolívar, provincia de Buenos Aires,  
89 Argentina.
- 90 29. Programa Laboratorio de Salud Pública "Dr Dalmiro Pérez Laborda", Ministerio de Salud de  
91 la provincia de San Luis, Argentina.
- 92 30. Laboratorio De Salud Pública, Ciudad de Mendoza, provincia de Mendoza, Argentina.
- 93 31. Laboratorio de biología molecular del Hospital Centenario, Gualeguaychú, provincia de  
94 Entre Ríos, Argentina.
- 95 32. Laboratorio del Hospital Interzonal General de Agudos "Evita", Lanús, provincia de Buenos  
96 Aires, Argentina.
- 97 33. Laboratorio de Biología Molecular Hospital Pedro de Elizalde, Ciudad Autónoma de Buenos  
98 Aires, Argentina.
- 99 34. Laboratorio Central, ciudad de Santa Fe, provincia de Santa Fe. Argentina.
- 100 35. Laboratorio de Biología Molecular, Hospital Cosme Argerich, Ciudad Autónoma de Buenos  
101 Aires, Argentina.
- 102 36. Laboratorio de Hospital El Cruce Dr. Néstor C. Kirchner, CEMET, Florencio Varela, provincia  
103 de Buenos Aires, Argentina.

- 104 37. Laboratorio de la Dirección de Epidemiología, Santa Rosa, provincia de La Pampa,  
105 Argentina.
- 106 38. Instituto de Investigaciones Biomédicas en Retrovirus y Sida, CONICET-UBA, Ciudad  
107 Autónoma de Buenos Aires, Argentina.
- 108 39. Laboratorio de Biología Molecular. Hospital Dr. Héctor Cura, Olavarría, provincia de  
109 Buenos Aires, Argentina.
- 110 40. Departamento de Biología y genética molecular; IACA Laboratorios, Bahía Blanca, provincia  
111 de Buenos Aires, Argentina.
- 112 41. Laboratorio de Biología molecular del Hospital General de Agudos Dr. Carlos G. Durand,  
113 Ciudad Autónoma de Buenos Aires, Argentina.
- 114 42. Comisión de Investigaciones Científicas de la provincia de Buenos Aires, Argentina.
- 115

116 **Abstract**

117 Molecular surveillance of SARS-CoV-2 variants was performed on a total of 2,406 samples from  
118 the capital city and nine provinces of Argentina, during 30 epidemiological weeks (EW) that  
119 covered the end of the first wave and the beginning of the ongoing second wave of the COVID-  
120 19 pandemic in the country (EW 44/2020 to EW 20/2021). The surveillance strategy was  
121 mainly based on Sanger sequencing of a Spike coding region that allows the simultaneous  
122 identification of signature mutations associated with worldwide circulating variants. In  
123 addition, whole SARS-CoV-2 genome sequences were obtained from 456 samples. The main  
124 variants found were Gamma, Lambda and Alpha, and to a lesser extent, Zeta and Epsilon.  
125 Whereas Gamma dominated in different regions of the country, both Gamma and Lambda  
126 prevailed in the most populated area, the metropolitan region of Buenos Aires (MABA),  
127 although showing a heterogeneous distribution along this region. This cost-effective  
128 surveillance protocol allowed for a rapid response in a limited access to resources scenario,  
129 added information on the expansion of the Lambda variant in South America and contributed  
130 to the implementation of public health measures to control the disease spread in  
131 Argentina.

132

133 **KEYWORDS:** SARS-CoV-2; variants; South America; Argentina; surveillance; Spike sequence

134 **Main text**

135 The emergence of SARS-CoV-2 variants with concerning characteristics to public health has  
136 attracted the attention of the scientific community and governments both regionally and  
137 globally since the end of 2020. The most relevant variants described so far include: Alpha  
138 (lineage B.1.1.7), first detected in the United Kingdom; Beta (lineage B.1.351), initially detected  
139 in South Africa; Gamma (lineage P.1, derived from lineage B.1.1.28), initially detected in  
140 Manaus, Brazil, and Japan; Delta (lineage B.1.627.2), initially detected in India; Epsilon  
141 (lineages B.1.427 and B.1.429), initially detected in California, United States; Zeta (lineage P.2,  
142 derived from lineage B.1.1.28), first detected in Rio de Janeiro, Brazil; and Lambda (lineage  
143 C.37, derived from B.1.1.1), initially detected in Peru (1). Four of these variants (Alpha to Delta)  
144 have been defined as variants of concern (VOC) given their increased transmissibility and other  
145 characteristics (1). They have also been associated with an increased risk of hospitalization  
146 (2,3) and, in the case of Beta, Gamma and Delta, with a moderate to substantial reduction in  
147 neutralizing activity of monoclonal antibodies, convalescent and vaccine sera (4–6).

148 Gamma and Lambda are particularly relevant for Argentinean public health due to their  
149 significant presence in the South American region. Importantly, some of these variants share  
150 distinct mutations in the Spike protein -several of them in the receptor binding domain (RBD)  
151 region- that potentially affect transmissibility, pathogenesis and/or response to vaccination  
152 and immune-based therapies.

153 PAIS is the inter-institutional federal consortium of SARS-CoV-2 genomics in Argentina. It was  
154 created by the Ministry of Science and Technology to monitor SARS-CoV-2 diversity and  
155 evolution in the country, including surveillance of SARS-CoV-2 variants of public health interest  
156 (<http://pais.qb.fcen.uba.ar/>).

157 Between October 26<sup>th</sup>, 2020 and May 22<sup>nd</sup>, 2021 (epidemiological week (EW)44/2020 to  
158 EW20/2021), molecular surveillance was performed on a total of 2,406 samples from the  
159 capital city and nine provinces of the country, including the four most populated districts  
160 (Figure 1 and Table 1). This period covers the end of the first wave and the beginning of the  
161 ongoing second and largest wave of the COVID-19 pandemic in Argentina (Figure 2). During  
162 that period, the frontiers were mostly open for Argentinean residents, but the foreigners had  
163 severe restrictions to enter the country as tourists.

164 For this work, samples analyzed included a randomly selected 2.5-10% fraction of the total  
165 positive cases weekly detected in different health care centers. Regular sampling from four  
166 sentinel laboratories located in the metropolitan area of Buenos Aires (MABA) was performed  
167 along with sporadic sampling from other locations to sum up a total of 1,950 sequences.

168 Surveillance strategy was based on Sanger sequencing of a 970bp region of Spike spanning  
169 amino acids 428 to 750 (Figure 3) (7). This region allows the identification of signature  
170 mutations associated with variants Alpha, Beta, Gamma, Lambda and Delta. Additionally,  
171 complete SARS-CoV-2 genome sequences were obtained from 456 samples using the Quick  
172 protocol (8) with Oxford Nanopore or Illumina platforms and combined with partial sequences  
173 to perform the analysis of 2,406 sequences (Table 1).

174 In this work we show genomic evidence of SARS-CoV-2 local transmission of variants Alpha,  
175 Gamma, Lambda, Epsilon and Zeta in Argentina, as well as the detection of mutations  
176 Spike\_L452R and Spike\_E484K in different geographic regions of the country.

177 **Alpha** was identified in 220 cases. This variant was detected in the city of Buenos Aires (CABA)  
178 and in the provinces of Buenos Aires, Córdoba, Entre Ríos, Santa Fe, San Luis, La Pampa and  
179 Neuquén. Its frequency in most of the MABA region (CABA plus Great Buenos Aires (GBA))  
180 reached 19.8% (95% CI = 13.3-28.5) in EW 15/2021 (April 11<sup>th</sup> to 17<sup>th</sup>) but decreased to 10.9%  
181 (95% CI = 5.1-21.2) in EW 20/2021 (May 16<sup>th</sup> to 22<sup>nd</sup>) (Tables 1-2 and Figure 2). The  
182 phylogenetic analysis of whole genome sequences (including 127 from Argentina, 43 from this  
183 work) showed at least 35 independent introductions to the country, being the most related  
184 sequences from the USA, Central America, Europe, and the Middle East. Besides, five highly  
185 supported groups with at least three Argentinean sequences were observed (Figure 4). The  
186 largest group included 53 sequences from the CABA and nine provinces, from north to south of  
187 the country, suggesting a widespread local transmission and diversification.

188 **Gamma** was identified in a total of 499 cases. This variant was detected in the CABA and in the  
189 provinces of Buenos Aires, Córdoba, Santa Fe, Entre Ríos, La Pampa, San Luis, Mendoza and  
190 Neuquén. Its frequency in the CABA and GBA remained stable at values over 30% since EW  
191 16/2021, reaching 39.1% (95% CI = 28.0-51.3) in the EW 20/2021. The phylogenetic analysis of  
192 complete genome sequences (including 238 from Argentina, 50 from this work) showed at  
193 least 50 introductions to Argentina, with the most related sequences from Brazil and the USA.  
194 Besides, 18 supported groups with at least three Argentinean sequences were observed  
195 (Figure 5). The largest one included 72 sequences from the CABA and 14 provinces, from north  
196 to south of the country, also suggesting widespread local transmission and diversification  
197 (Figure 5.d). Eight sequences from Argentina were located in a separate clade within P.1  
198 (previously named as P.1-like-II, (9)). This clade was formed by sequences from South America  
199 only (Brazil, Chile and Argentina) (Figure 5), showing a regional diversification process.

200 **Lambda** variant showed a continuous increase since EW 7/2021 in the CABA and the GBA,  
201 reaching frequencies of 48.4% (95% CI = 36.6-60.4) in the EW 20/2021. Noteworthy, this

202 variant appears to have replaced Alpha variant in the most populated region of the country  
203 (Table 2), given that since EW 15/2021, the proportion of cases associated with Alpha  
204 decreased while those associated with Lambda increased. These data have contributed to its  
205 recent declaration as a global VOI by the WHO (1). The transmission capacity, clinical behavior,  
206 and impact on vaccine effectiveness of this VOI will need further studies. However, preliminary  
207 studies have shown that the neutralization capacity of convalescent sera from the first wave  
208 viruses in Argentina and sera from individuals vaccinated with Sputnik V was not compromised  
209 (BBEI, 2021). On the other hand, increased infectivity and resistance to neutralizing antibodies  
210 produced by individuals immunized with CoronaVac (SinoVac) and mRNA-1273 (Moderna)  
211 vaccines was observed (10,11).

212 In addition, a probable case of coinfection of Alpha and Gamma was identified in a sample  
213 from the city of La Plata, and also two other cases of possible coinfection between Alpha and  
214 Lambda in the CABA. These cases will be further analyzed.

215 Importantly, the proportion of cases associated with Alpha and Gamma among individuals with  
216 no travel history or contact with travelers in CABA and GBA increased from less than 3% in the  
217 EW 7/2021-EW 9/2021 to 50.0% (for joint frequencies) in the EW 20/2021, and adding  
218 Lambda, they surpassed 98% of the total samples at that EW (Table 2).

219 However, the distribution of variants of epidemiological interest between EW 9/2021 and EW  
220 20/2021 was heterogeneous within the MABA (Figure 6). While North GBA presented a  
221 predominance of Gamma (16/39 cases, 41.0%) and 9/39 cases of Lambda (23.1%), west GBA  
222 presented a more even distribution of variants, with Lambda in 58/176 cases (33.0%), Gamma  
223 in 49/176 cases (27.8%), and Alpha in 34/176 cases (19.3%). Similarly, the CABA presented  
224 Lambda in 150/508 cases (29.5%), Gamma in 110/508 cases (21.7%), and Alpha in 67/508  
225 cases (13.2%). On the contrary, south GBA presented a predominance of Lambda (127/253  
226 cases, 50.2%), followed by Gamma in 47/253 cases (18.6%) and Alpha in 10/253 cases (4.0%).  
227 Lastly, Great La Plata (GLP) showed a strong predominance of Gamma, counting 43/61 (70.5%).

228 The analysis of the sporadic sampling from several places of the country also revealed a  
229 heterogeneous distribution of variants, showing a high proportion of cases associated with  
230 different variants and mutations of interest, especially with Gamma in most of the provinces  
231 studied (Table 1).

232 Therefore, the major lineages that circulated on the first wave at the beginning of the studied  
233 period were almost completely replaced by worldwide and regional emergent variants in a  
234 term of few weeks (Figure 2 and Figure 6), as was previously observed in other countries.



235 It is worth noting that data about the dynamics of the co-circulation of these highly  
236 transmissible variants are limited, given that in most countries only one of them became  
237 rapidly dominant and the introduction of a second VOC occurred after the first was already  
238 established. However, according to our data from several regions of Argentina, VOCs and VOIs  
239 presented similar frequencies in the population at the time of writing this report, which could  
240 allow proper comparative analyses of their dynamics, severity, and impact on vaccine  
241 effectiveness.

242 Mutations at aa positions 484 and 452 of Spike protein have been associated with possible  
243 immune escape and modified affinity to the human receptor and may occur in various newly  
244 emerging lineages worldwide (11–14). Both positions are located within the RBM (receptor  
245 binding motif). On one hand, the E484K mutation, constitutively present in Beta, Gamma, Zeta,  
246 Eta and Iota variants, was associated with resistance to neutralization by monoclonal  
247 antibodies, convalescent and vaccinated sera (4,12,15–17). On the other hand, mutations at  
248 position 452 of the Spike protein, were associated with decreased neutralization by  
249 monoclonal antibodies, convalescent and some vaccine sera (12,13). Another important  
250 mutation in Spike is P681R, associated with an enhanced viral fusion (18), which was not  
251 detected in this work.

252 The E484K mutation - not associated with Beta or Gamma signatures- was found in 138 cases.  
253 Most of the samples come from the CABA and the GBA regions from individuals without travel  
254 history, suggesting local circulation, at least, since the last week of December 2020, when it  
255 was first detected by our surveillance program. Nevertheless, a reduction in its frequency was  
256 observed since EW 12/2021 in the CABA and the GBA, being almost completely replaced by  
257 VOCs and VOIs of more recent emergence, such as Lambda (Table 2). So far, 53 of 138 cases  
258 analyzed by full-length sequencing have been identified as belonging to the Zeta variant  
259 through the analysis of the complete genome.

260 For the L452R mutation, a similar replacement has been observed, being occasionally detected  
261 in the CABA and the GBA between the EW 1/2021 and the EW 13/2021, but not thereafter.  
262 The complete genome analysis of 21 cases allowed to identify the Epsilon variant in 18 cases:  
263 one from lineage B.1.429 and 17 from lineage B.1.427. None of the L452R cases detected so  
264 far were associated with Delta or Kappa variants.

265 In conclusion, the surveillance strategy implemented over 30 epidemiological weeks in  
266 Argentina, based on Spike and complete genome sequencing, allowed to describe the  
267 introduction, establishment, and evolution of SARS-CoV-2 variants of interest and concern in  
268 the second wave of the COVID-19 pandemic in South America. The main variants found were

269 Gamma, Lambda and Alpha, in that order, with lower detection of Zeta and Epsilon. This  
270 implementation allowed a rapid response in a limited resource access scenario and  
271 contributed to the implementation of public health measures to control disease spread.  
272

273 **Table 1.** Cumulative cases analyzed in this work from different regions of Argentina.

274

Region	Area or city	Period	Alpha	Gamma	Lambda	E484K	L452R	Non VOC/VOI	TOTAL
<b>CABA (part of MABA)</b>		2020-10-26 to 2021-05-22	81	121	160	67	10	427	866
<b>GBA (part of MABA)</b>	North	2020-12-21 to 2021-05-21	5	16	10	4	0	32	67
	West	2020-11-28 to 2021-05-22	35	50	59	17	3	108	272
	South	2020-10-26 to 2021-05-22	10	47	138	27	5	163	390
<b>GLP (part of MABA)</b>		2020-11-27 to 2021-04-24	1	43	13	1	2	31	91
<b>MABA</b>	unknown	2021-02-14 to 2021-05-21	3	2	7	0	0	7	19
<b>PBA (outside MABA)</b>	Several cities	2020-11-27 to 2021-05-21	42	44	48	17	3	82	<b>236</b>
<b>Córdoba</b>	Several cities	2020-11-03 to 2021-05-21	18	23	16	4	11	83	<b>155</b>
<b>Santa Fe</b>	Several cities	2020-12-11 to 2021-05-22	9	68	6	0	3	59	<b>145</b>
<b>Entre Ríos</b>	Several cities	2021-05-11 to 2021-05-14	11	20	3	0	0	3	<b>37</b>
<b>La Pampa</b>	Santa Rosa	2021-05-16 to 2021-05-17	1	11	1	0	0	0	<b>13</b>
<b>San Luis</b>	Several cities	2021-04-02 to 2021-04-17	3	14	3	0	0	10	<b>30</b>
<b>Mendoza</b>	General Alvear	2021-03-22 to 2021-04-08	0	15	0	0	0	0	<b>15</b>
<b>Neuquén</b>	Several cities	2021-01-03 to 2021-05-15	1	25	1	0	2	33	<b>62</b>
<b>Río Negro</b>	Bariloche	2021-12-21 to 2021-03-09	0	0	0	1	0	7	<b>8</b>
<b>TOTAL</b>		<b>2020-10-26 to 2021-05-22</b>	<b>220</b>	<b>499</b>	<b>465</b>	<b>138</b>	<b>39</b>	<b>1045</b>	<b>2406</b>

275 Note: The total in CABA (n = 866) does not include two co-infections (Alpha/Lambda) and the total in GLP (n = 91) does not include one co-infection  
 276 (Alpha/Gamma).

277 CABA: Buenos Aires city. GBA: Great Buenos Aires. GLP: Great La Plata. MABA: Metropolitan area of Buenos Aires. PBA: Buenos Aires province.

278

279 **Table 2.** Frequency of Alpha and Gamma, and mutations E484K and L452R by epidemiological week (EW) 2020-2021 in the Metropolitan Area of Buenos Aires (MABA).

EW	Alpha		Gamma		Lambda		Mutation E484K <sup>3</sup>		Mutation L452R <sup>4</sup>		Non VOC/VOI		Total of sequences <sup>1</sup>
	Frequency (%)	95%CI <sup>2</sup>	Frequency (%)	95%CI <sup>2</sup>	Frequency (%)	95%CI <sup>2</sup>	Frequency (%)	95%CI <sup>2</sup>	Frequency (%)	95%CI <sup>2</sup>	Frequency (%)	95%CI <sup>2</sup>	
44-51	<b>0,0</b>	-	<b>0,0</b>	-	<b>0,0</b>	-	<b>5,4</b>	2.0-12.3	<b>0,0</b>	-	<b>94,6</b>	87.7-98.0	<b>93</b>
52	<b>0,0</b>	-	<b>0,0</b>	-	<b>0,0</b>	-	<b>1,5</b>	<0.01-8.6	<b>0,0</b>	-	<b>98,5</b>	91.4-100	<b>68</b>
53	<b>0,0</b>	-	<b>0,0</b>	-	<b>0,0</b>	-	<b>1,5</b>	<0.01-8.9	<b>0,0</b>	-	<b>98,5</b>	91.1-100	<b>66</b>
1	<b>0,0</b>	-	<b>0,0</b>	-	<b>0,0</b>	-	<b>1,5</b>	<0.01-8.8	<b>1,5</b>	<0.01-8.8	<b>97,0</b>	89.1-99.8	<b>67</b>
2	<b>0,0</b>	-	<b>0,0</b>	-	<b>0,0</b>	-	<b>8,7</b>	2.9-20.9	<b>0,0</b>	-	<b>91,3</b>	79.1-97.1	<b>46</b>
3	<b>0,0</b>	-	<b>0,0</b>	-	<b>3,0</b>	<0.01-16.7	<b>15,2</b>	6.2-31.4	<b>3,0</b>	<0.01-16.7	<b>78,8</b>	62.0-89.6	<b>33</b>
4	<b>0,0</b>	-	<b>0,0</b>	-	<b>0,0</b>	-	<b>14,3</b>	5.8-29.9	<b>0,0</b>	-	<b>85,7</b>	70.1-94.2	<b>35</b>
5	<b>4,4</b>	<0.01-22.7	<b>0,0</b>	-	<b>0,0</b>	-	<b>26,1</b>	12.3-46.8	<b>0,0</b>	-	<b>69,6</b>	48.9-84.6	<b>23</b>
6	<b>0,0</b>	-	<b>0,0</b>	-	<b>0,0</b>	-	<b>19,4</b>	9.5-35.3	<b>2,8</b>	<0.01-15.4	<b>77,8</b>	61.7-88.5	<b>36</b>
7	<b>1,9</b>	<0.01-10.7	<b>0,0</b>	-	<b>9,3</b>	3.6-20.3	<b>18,5</b>	10.2-31.0	<b>1,9</b>	<0.01-10.7	<b>68,5</b>	55.2-79.4	<b>54</b>
8	<b>1,6</b>	<0.01-9.1	<b>0,0</b>	-	<b>12,5</b>	6.2-23.0	<b>14,1</b>	7.4-24.8	<b>0,0</b>	-	<b>71,9</b>	59.8-81.5	<b>64</b>
9	<b>6,7</b>	3.1-13.5	<b>1,0</b>	<0.01-5.8	<b>16,4</b>	10.4-24.7	<b>10,6</b>	5.9-18.1	<b>3,9</b>	1.2-9.8	<b>61,5</b>	51.9-70.3	<b>104</b>
10	<b>7,0</b>	3.2-14.0	<b>2,0</b>	0.1-7.4	<b>18,0</b>	11.6-26.8	<b>14,0</b>	8.4-22.3	<b>4,0</b>	1.2-10.2	<b>55,0</b>	45.2-64.4	<b>100</b>
11	<b>16,7</b>	9.6-27.1	<b>5,6</b>	1.8-13.8	<b>18,1</b>	10.7-28.6	<b>20,8</b>	12.9-31.7	<b>2,8</b>	0.2-10.2	<b>36,1</b>	26.0-47.7	<b>72</b>
12	<b>13,7</b>	8.2-21.9	<b>11,8</b>	6.7-19.6	<b>33,3</b>	24.9-43.0	<b>9,8</b>	5.2-17.3	<b>2,9</b>	0.6-8.7	<b>28,4</b>	20.6-37.9	<b>102</b>
13	<b>18,5</b>	11.4-28.5	<b>16,1</b>	9.5-25.7	<b>40,7</b>	30.7-51.6	<b>3,7</b>	0.8-10.8	<b>1,2</b>	<0.01-7.3	<b>19,8</b>	12.4-29.8	<b>81</b>
14	<b>7,8</b>	3.8-14.9	<b>34,3</b>	25.8-44.0	<b>47,1</b>	37.7-56.7	<b>0,0</b>	-	<b>0,0</b>	-	<b>10,8</b>	6.0-18.4	<b>102</b>
15	<b>19,8</b>	13.3-28.5	<b>32,1</b>	23.9-41.5	<b>38,7</b>	30.0-48.2	<b>2,8</b>	0.6-8.4	<b>0,0</b>	37.0-65.0	<b>6,6</b>	3.0-13.2	<b>106</b>
16	<b>12,0</b>	6.2-21.5	<b>40,0</b>	29.7-51.3	<b>38,7</b>	28.4-50.0	<b>2,7</b>	0.2-9.8	<b>0,0</b>	-	<b>6,7</b>	2.5-15.0	<b>75</b>
17	<b>11,8</b>	6.3-20.5	<b>41,2</b>	31.3-51.8	<b>41,2</b>	31.3-51.8	<b>2,4</b>	0.1-8.7	<b>0,0</b>	-	<b>3,5</b>	0.8-10.3	<b>85</b>
18	<b>4,7</b>	0.4-16.3	<b>32,6</b>	20.4-47.6	<b>58,1</b>	43.3-71.6	<b>0,0</b>	-	<b>0,0</b>	-	<b>4,7</b>	0.4-16.3	<b>43</b>
19	<b>9,5</b>	3.2-22.6	<b>40,5</b>	27.0-55.5	<b>47,6</b>	33.4-62.3	<b>2,4</b>	<0.01-13.4	<b>0,0</b>	-	<b>0,0</b>	-	<b>42</b>
20	<b>10,9</b>	5.1-21.2	<b>39,1</b>	28.0-51.3	<b>48,4</b>	36.6-60.4	<b>0,0</b>	-	<b>0,0</b>	-	<b>1,6</b>	<0.01-9.1	<b>64</b>

280 <sup>1</sup> Only the cases from the MABA region that did not present a history of travel or close contact with travelers are included; in cases with a known epidemiological link between  
281 samples, only one was included in this table.

282 <sup>2</sup> The adjusted confidence interval of the frequency was estimated by the modified Wald method (19).

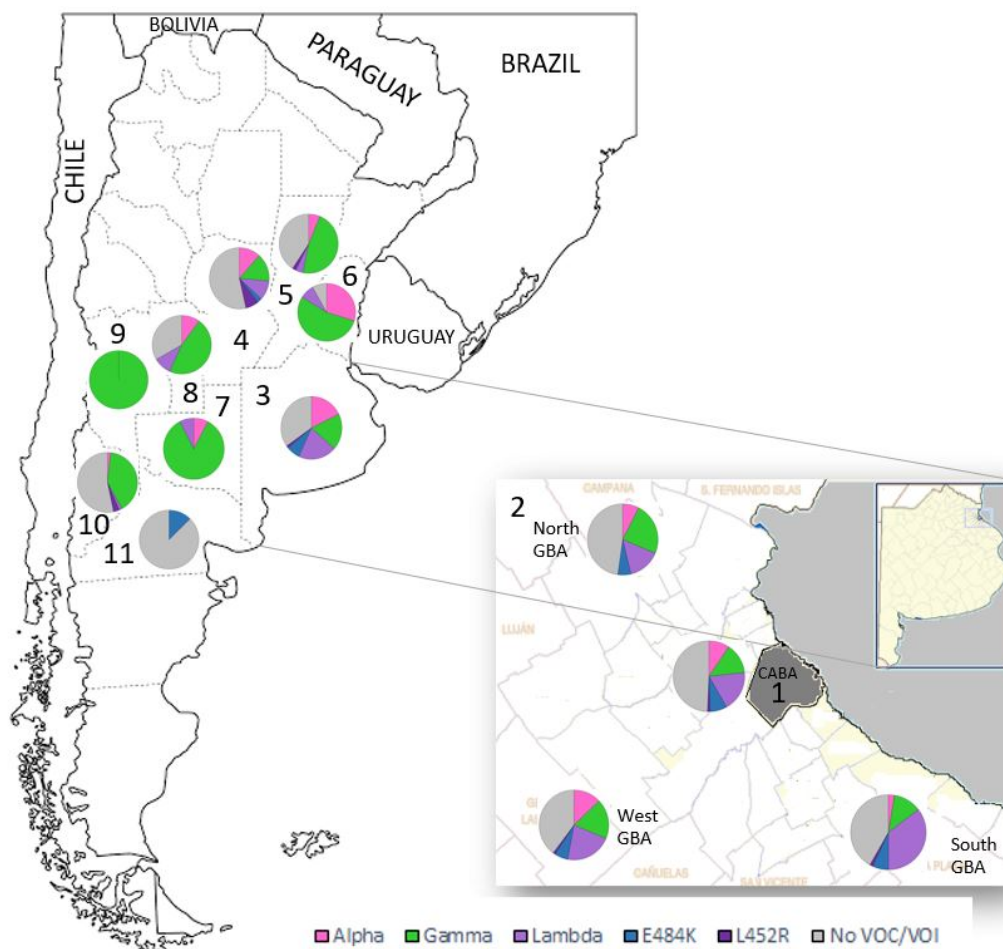
283 <sup>3</sup> Includes detections of the E484K mutation that do not belong to sequences with the characteristic combination of mutations of Gamma or Beta variants.

284 <sup>4</sup> Includes detections of the L452R mutation that do not belong to sequences with the characteristic combination of mutations of Delta or Kappa variants.

285

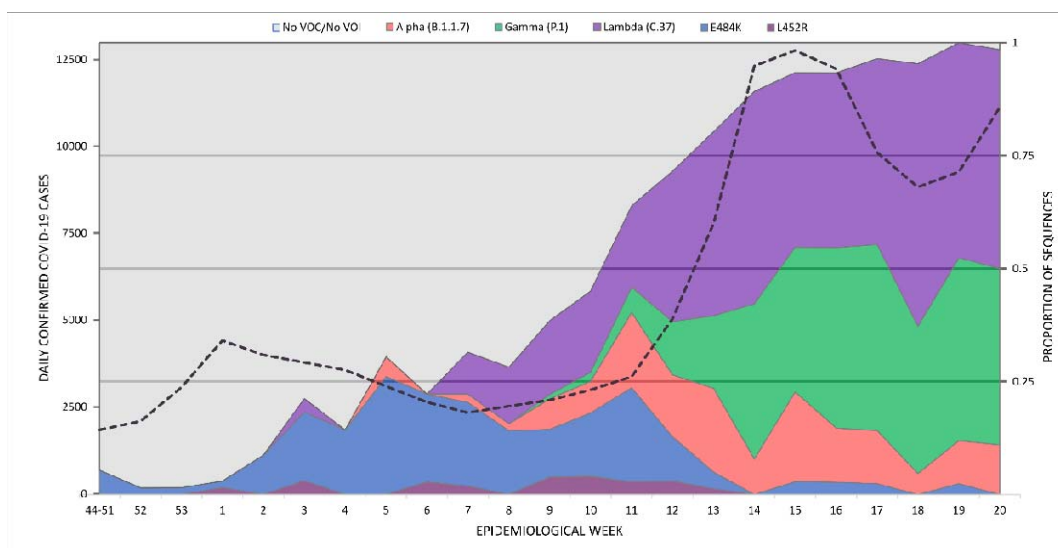
286 **Figures**

287



289 **Figure 1.** Location of cases analyzed in this work and pie charts representing the frequency of  
290 each variant detected in every region between EW44/2020 to EW20/2021. 1. Buenos Aires  
291 city, 2. Great Buenos Aires (North, West, South), 3. Province of Buenos Aires, 4. Province of  
292 Córdoba, 5. Province of Santa Fe, 6. Province of Entre Ríos, 7. Province of La Pampa, 8.  
293 Province of San Luis, 9. Province of Mendoza, 10. Province of Neuquén, 11. Province of Río  
294 Negro.

295

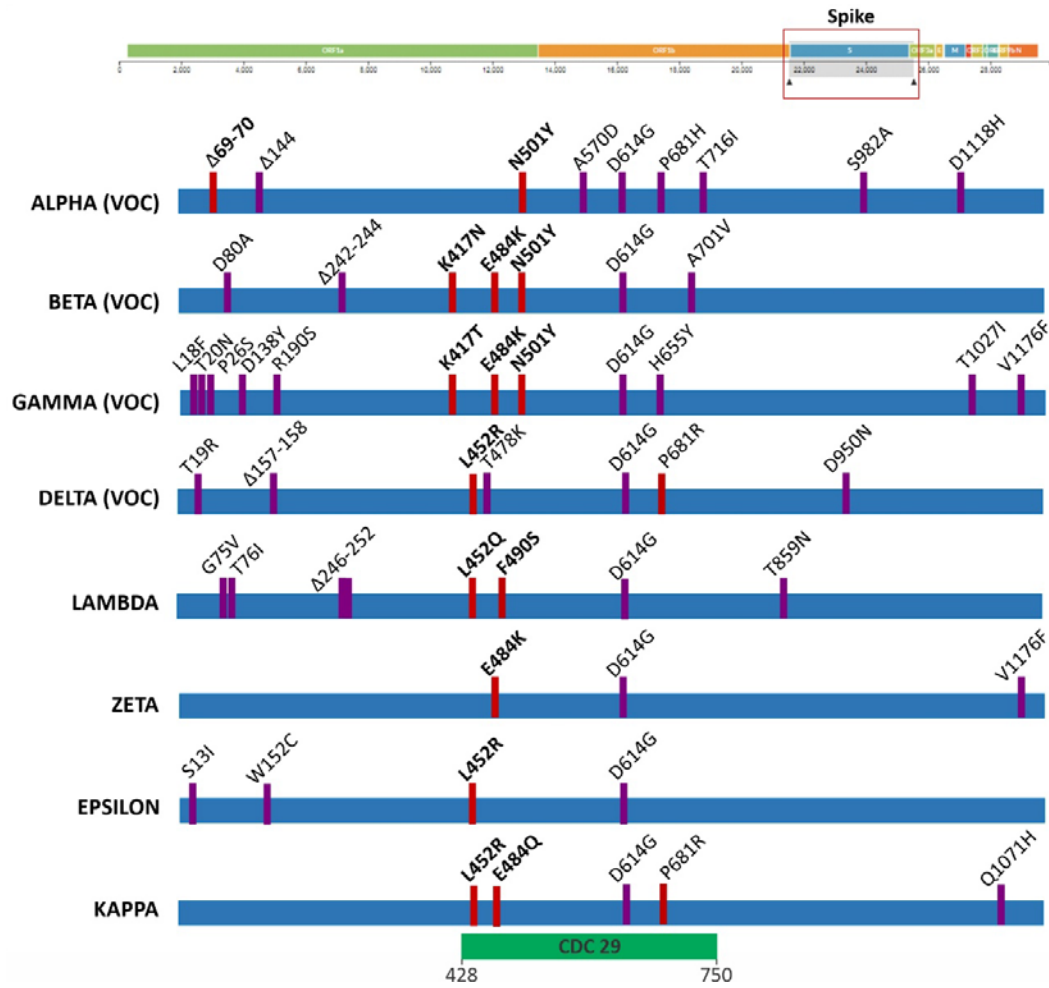


296

297 **Figure 2.** Number of reported cases by epidemiological week 2020-2021 since the beginning of  
298 the molecular surveillance of SARS-CoV-2 variants. Only cases that did not present a history of  
299 travel or close contact with travelers are included. Dotted line (mapped to the left y axis)  
300 indicates the average number of confirmed COVID-19 cases per week in the Metropolitan Area  
301 of Buenos Aires (MABA).

302

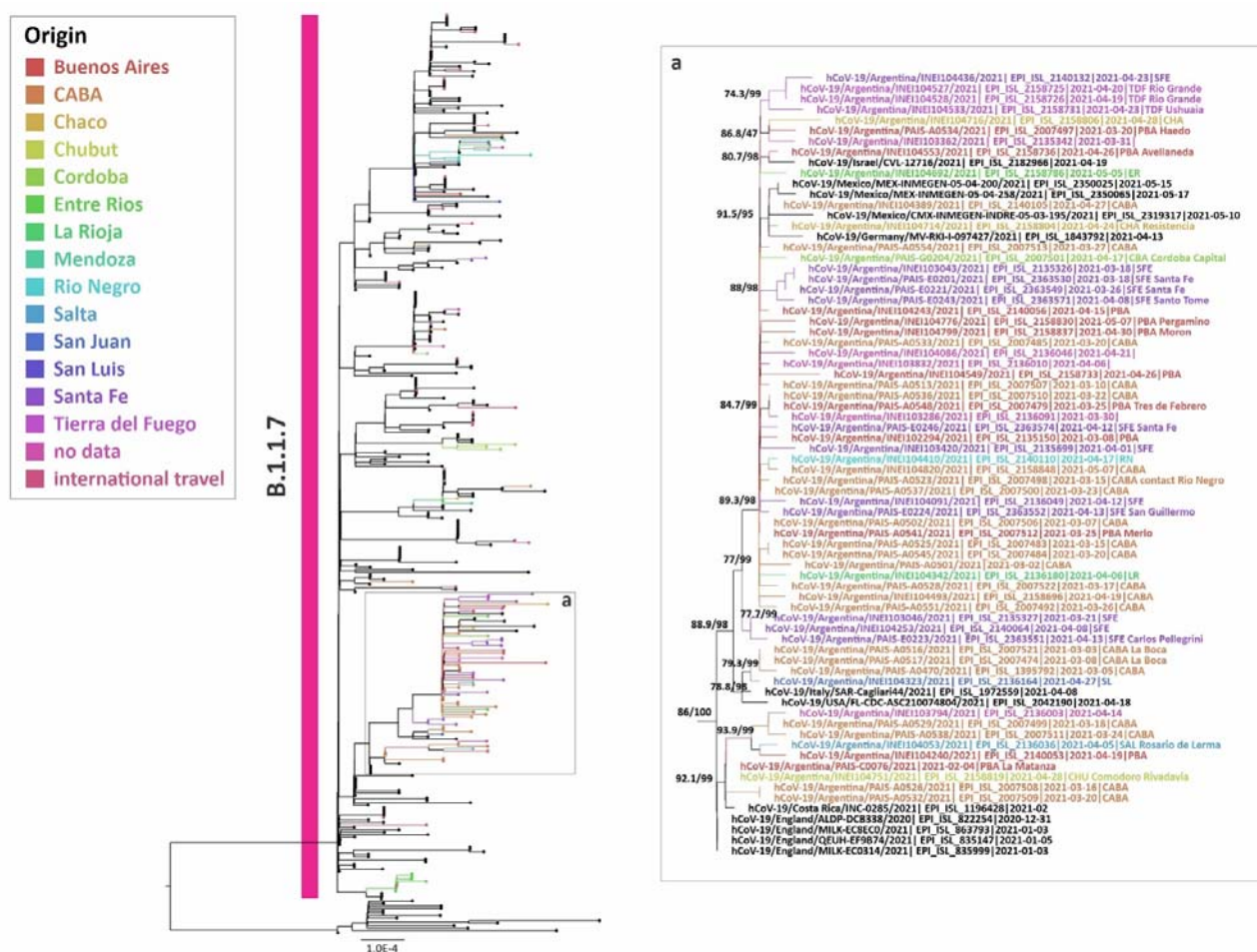
303



304

305 **Figure 3.** Representation of the amino acid changes in the S gene of SARS-CoV-2 variants of  
 306 epidemiological interest. Changes indicated in red correspond to those with the greatest  
 307 potential impact on viral biology or neutralization by antibodies. The location of CDC fragment  
 308 29 (codons 428 to 750) used for active surveillance of variants is indicated.

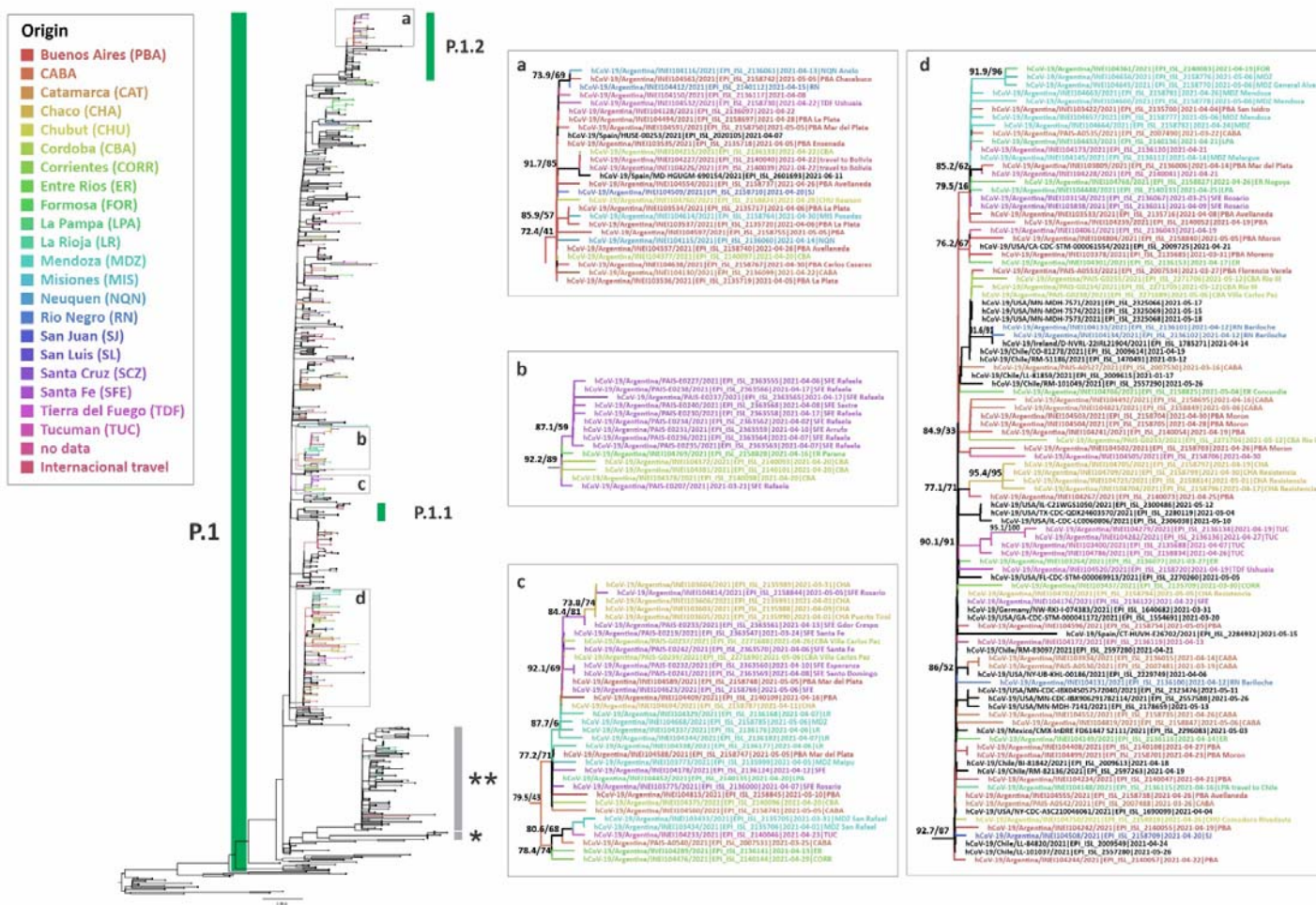
309



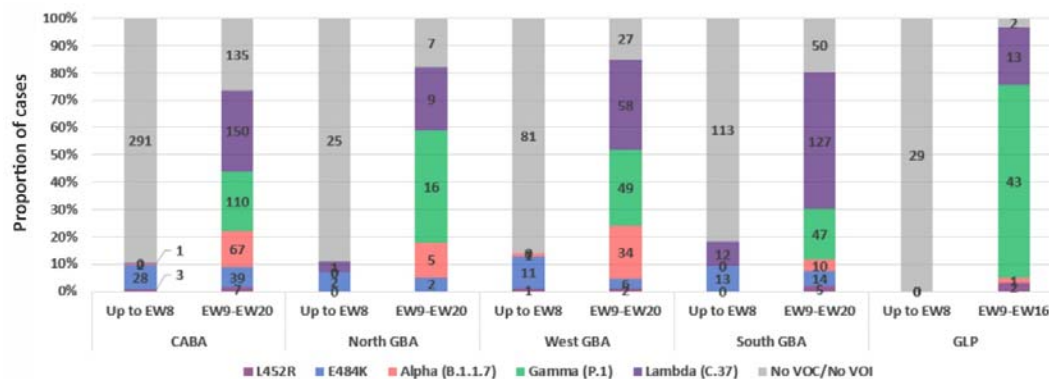
311

312 **Figure 4** Phylogenetic tree of SARS-CoV-2 whole genome sequences of Alpha (lineage B.1.1.7). Dataset included reference sequences from Argentina, their best five  
 313 BLAST hits sequences (against GISAID database on June 2<sup>nd</sup> 2021), reference sequences of B.1.1.7 lineage, and B.1.1.1 sequences as outgroup. Only the largest  
 314 group with Argentinean sequences is shown. Phylogenetic analysis was performed using IQ-TREE v. 2.1.2 COVID-edition (20). The SH-like approximate  
 315 likelihood ratio test (1000 replicates) (21) and Ultrafast bootstrap Approximation (1000 replicates) (22) were used as methods to evaluate the reliability of the  
 316 groups obtained. The SH-like / UFB values for the relevant groups are indicated for some groups. We gratefully acknowledged the authors from the originating  
 317 laboratories responsible for obtaining the specimens and the submitting laboratories where genetic sequence data were generated and shared via the GISAID  
 318 Initiative, on which part of this research is based (Table S1).





319  
 320 **Figure 5.** Phylogenetic tree of SARS-CoV-2 whole genome sequences of Gamma (lineage P.1). Dataset included sequences from Argentina, their best five BLAST  
 321 hits sequences (against GISAID database on June 2<sup>nd</sup> 2021), reference sequences of P.1 lineage, and B.1.1.28 sequences as outgroup. Only selected groups with  
 322 Argentinean sequences are shown. Phylogenetic analysis was performed as previously described in Figure 5. \*P.1-like-I and \*\*P.1-like-II described by Gräf et al  
 323 (9). We gratefully acknowledge the authors from the originating laboratories responsible for obtaining the specimens and the submitting laboratories where  
 324 genetic sequence data were generated and shared via the GISAID Initiative, on which part of this research is based (Table S2).



325

326 **Figure 6.** Cumulative number of SARS-CoV-2 variants and sequences with or without mutations  
 327 of interest in the Metropolitan area of Buenos Aires (CABA, GBA and Great La Plata (GLP)). The  
 328 cases were analyzed in two periods: until EW 8/2021 and from EW 9/2021 to EW 20/2021,  
 329 according to the moment of change in the trend of the frequencies of the variants or  
 330 mutations in each region. Only cases that did not present a history of travel or close contact  
 331 with travelers are included; in cases sharing an epidemiological link, only one was considered  
 332 as representative. The bars show the number of samples corresponding to variants, mutations  
 333 or non-VOC/non-mutations of interest.

334

335

### 336 References

- 337 1. WHO. Weekly epidemiological update on COVID-19 - 15 June 2021 [Internet]. 2021.  
 338 Available from: [https://www.who.int/publications/m/item/weekly-epidemiological-update-](https://www.who.int/publications/m/item/weekly-epidemiological-update-on-covid-19---15-june-2021)  
 339 [on-covid-19---15-june-2021](https://www.who.int/publications/m/item/weekly-epidemiological-update-on-covid-19---15-june-2021)
- 340 2. Funk T, Pharris A, Spiteri G, Bundle N, Melidou A, Carr M, et al. Characteristics of SARS-CoV-  
 341 2 variants of concern B.1.1.7, B.1.351 or P.1: data from seven EU/EEA countries, weeks  
 342 38/2020 to 10/2021. *Eurosurveillance* [Internet]. 2021;26(16). Available from:  
 343 <https://www.eurosurveillance.org/content/10.2807/1560-7917.ES.2021.26.16.2100348>
- 344 3. Sheikh A, McMenamin J, Taylor B, Robertson C. SARS-CoV-2 Delta VOC in Scotland:  
 345 demographics, risk of hospital admission, and vaccine effectiveness. *Lancet* [Internet].  
 346 2021;397(10293):2461–2. Available from: [http://dx.doi.org/10.1016/S0140-6736\(21\)01358-](http://dx.doi.org/10.1016/S0140-6736(21)01358-1)  
 347 1
- 348 4. Garcia-Beltran WF, Lam EC, St. Denis K, Nitido AD, Garcia ZH, Hauser BM, et al. Multiple  
 349 SARS-CoV-2 variants escape neutralization by vaccine-induced humoral immunity. *Cell*  
 350 [Internet]. 2021 Apr 29;184(9):2372-2383.e9. Available from:

- 351 <https://doi.org/10.1016/j.cell.2021.03.013>
- 352 5. Wang P, Casner RG, Nair MS, Wang M, Yu J, Cerutti G, et al. Increased Resistance of SARS-  
353 CoV-2 Variant P.1 to Antibody Neutralization. *bioRxiv* [Internet]. 2021 Jan  
354 1;2021.03.01.433466. Available from:  
355 <http://biorxiv.org/content/early/2021/04/09/2021.03.01.433466.abstract>
- 356 6. Biobanco de Enfermedades Infecciosas. Seroneutralización de variantes SARS-CoV-2  
357 Gamma (P.1, Manaus), Alpha (B.1.1.7, Reino Unido) y Lambda (C.37, Andina) en  
358 individuos vacunados con Sputnik V e individuos recuperados de la infección por SARS-CoV-  
359 2 [Internet]. 2021. Available from:  
360 [http://pais.qb.fcen.uba.ar/files/reportes/informe\\_seroneutralizacion\\_C37\\_P1.pdf](http://pais.qb.fcen.uba.ar/files/reportes/informe_seroneutralizacion_C37_P1.pdf)
- 361 7. Paden C, Tao Y, Queen K, Zhang J, Li Y, Uehara A, et al. Rapid, Sensitive, Full-Genome  
362 Sequencing of Severe Acute Respiratory Syndrome Coronavirus 2. *Emerg Infect Dis J*  
363 [Internet]. 2020;26(10):2401. Available from: [https://wwwnc.cdc.gov/eid/article/26/10/20-](https://wwwnc.cdc.gov/eid/article/26/10/20-1800_article)  
364 [1800\\_article](https://wwwnc.cdc.gov/eid/article/26/10/20-1800_article)
- 365 8. Quick J. nCoV-2019 sequencing protocol v3 (LoCost) V.3 [Internet]. 2020. Available from:  
366 <https://www.protocols.io/view/ncov-2019-sequencing-protocol-v3-locost-bh42j8ye>
- 367 9. Gräf T, Bello G, Martins Venas TM, Cavalcante Pereira E, Dias Paixão AC, Reis Appolinario L,  
368 et al. Identification of SARS-CoV-2 P.1-related lineages in Brazil provides new insights about  
369 the mechanisms of emergence of Variants of Concern [Internet]. Available from:  
370 [https://virological.org/t/identification-of-sars-cov-2-p-1-related-lineages-in-brazil-provides-](https://virological.org/t/identification-of-sars-cov-2-p-1-related-lineages-in-brazil-provides-new-insights-about-the-mechanisms-of-emergence-of-variants-of-concern/694)  
371 [new-insights-about-the-mechanisms-of-emergence-of-variants-of-concern/694](https://virological.org/t/identification-of-sars-cov-2-p-1-related-lineages-in-brazil-provides-new-insights-about-the-mechanisms-of-emergence-of-variants-of-concern/694)
- 372 10. Acevedo ML, Alonso-Palomares L, Bustamante A, Gaggero A, Paredes F, Cortés CP, et  
373 al. Infectivity and immune escape of the new SARS-CoV-2 variant of interest Lambda.  
374 *medRxiv* [Internet]. 2021 Jan 1;2021.06.28.21259673. Available from:  
375 <http://medrxiv.org/content/early/2021/07/01/2021.06.28.21259673.abstract>
- 376 11. Tada T, Zhou H, Dcosta BM, Samanovic MI, Mulligan MJ, Landau NR. SARS-CoV-2  
377 Lambda Variant Remains Susceptible to Neutralization by mRNA Vaccine-elicited Antibodies  
378 and Convalescent Serum. *bioRxiv* [Internet]. 2021 Jan 1;2021.07.02.450959. Available from:  
379 <http://biorxiv.org/content/early/2021/07/03/2021.07.02.450959.abstract>
- 380 12. Liu Z, VanBlargan LA, Bloyet L-M, Rothlauf PW, Chen RE, Stumpf S, et al. Identification  
381 of SARS-CoV-2 spike mutations that attenuate monoclonal and serum antibody  
382 neutralization. *Cell Host Microbe*. 2021 Mar;29(3):477-488.e4.
- 383 13. Starr TN, Greaney AJ, Hilton SK, Ellis D, Crawford KHD, Dingens AS, et al. Deep

- 384 Mutational Scanning of SARS-CoV-2 Receptor Binding Domain Reveals Constraints on  
385 Folding and ACE2 Binding. *Cell* [Internet]. 2020;182(5):1295-1310.e20. Available from:  
386 <https://www.sciencedirect.com/science/article/pii/S0092867420310035>
- 387 14. Deng X, Garcia-Knight MA, Khalid MM, Servellita V, Wang C, Morris MK, et al.  
388 Transmission, infectivity, and antibody neutralization of an emerging SARS-CoV-2 variant in  
389 California carrying a L452R spike protein mutation. *medRxiv* [Internet]. 2021 Jan  
390 1;2021.03.07.21252647. Available from:  
391 <http://medrxiv.org/content/early/2021/03/09/2021.03.07.21252647.abstract>
- 392 15. Weisblum Y, Schmidt F, Zhang F, DaSilva J, Poston D, Lorenzi JCC, et al. Escape from  
393 neutralizing antibodies by SARS-CoV-2 spike protein variants. Marsh M, van der Meer JWM,  
394 Montefiore D, editors. *Elife* [Internet]. 2020;9:e61312. Available from:  
395 <https://doi.org/10.7554/eLife.61312>
- 396 16. Greaney AJ, Starr TN, Gilchuk P, Zost SJ, Binshtein E, Loes AN, et al. Complete Mapping  
397 of Mutations to the SARS-CoV-2 Spike Receptor-Binding Domain that Escape Antibody  
398 Recognition. *Cell Host Microbe* [Internet]. 2021 Jan 13;29(1):44-57.e9. Available from:  
399 <https://doi.org/10.1016/j.chom.2020.11.007>
- 400 17. Baum A, Fulton BO, Wloga E, Copin R, Pascal KE, Russo V, et al. Antibody cocktail to  
401 SARS-CoV-2 spike protein prevents rapid mutational escape seen with individual antibodies.  
402 *Science* (80- ) [Internet]. 2020 Aug 21;369(6506):1014 LP – 1018. Available from:  
403 <http://science.sciencemag.org/content/369/6506/1014.abstract>
- 404 18. Saito A, Nasser H, Uriu K, Kosugi Y, Irie T, Shirakawa K, et al. SARS-CoV-2 spike P681R  
405 mutation enhances and accelerates viral fusion. *bioRxiv* [Internet]. 2021 Jan  
406 1;2021.06.17.448820. Available from:  
407 <http://biorxiv.org/content/early/2021/06/17/2021.06.17.448820.abstract>
- 408 19. Agresti A, Coull BA. Approximate Is Better than “Exact” for Interval Estimation of  
409 Binomial Proportions. *Am Stat* [Internet]. 1998 Jul 14;52(2):119–26. Available from:  
410 <http://www.jstor.org/stable/2685469>
- 411 20. Minh BQ, Schmidt HA, Chernomor O, Schrempf D, Woodhams MD, von Haeseler A, et  
412 al. IQ-TREE 2: New Models and Efficient Methods for Phylogenetic Inference in the Genomic  
413 Era. *Mol Biol Evol* [Internet]. 2020 May 1;37(5):1530–4. Available from:  
414 <https://doi.org/10.1093/molbev/msaa015>
- 415 21. Guindon S, Dufayard JF, Lefort V, Anisimova M, Hordijk W, Gascuel O. New algorithms  
416 and methods to estimate maximum-likelihood phylogenies: assessing the performance of

417 PhyML 3.0. Syst Biol [Internet]. 2010;59(3):307–21. Available from:  
418 [http://www.ncbi.nlm.nih.gov/entrez/query.fcgi?cmd=Retrieve&db=PubMed&dopt=Citation&list\\_uids=20525638](http://www.ncbi.nlm.nih.gov/entrez/query.fcgi?cmd=Retrieve&db=PubMed&dopt=Citation&list_uids=20525638)  
419

420 22. Hoang DT, Chernomor O, von Haeseler A, Minh BQ, Vinh LS. UFBoot2: Improving the  
421 Ultrafast Bootstrap Approximation. Mol Biol Evol [Internet]. 2018 Feb 1;35(2):518–22.  
422 Available from: <https://doi.org/10.1093/molbev/msx281>

423

424

425 **Funding**

426 Proyecto IP COVID-19 N°08, Focem COF 03/11 Covid-19.