

1 *PRISMA2020*: an R package and Shiny app for  
2 producing PRISMA 2020-compliant flow diagrams,  
3 with interactivity for optimised digital  
4 transparency and Open Synthesis

5  
6 **Short title:** PRISMA2020 tool for transparent systematic review flow diagrams  
7

8  
9 Neal R. Haddaway<sup>1,2,3\*</sup>, Matthew J. Page<sup>4</sup>, Chris C. Pritchard<sup>5</sup>, Luke A. McGuinness<sup>6</sup>

10

11 <sup>1</sup>Stockholm Environment Institute, Stockholm, Sweden

12 <sup>2</sup>Mercator Research Institute on Global Commons and Climate Change, Berlin, Germany

13 <sup>3</sup>Africa Centre for Evidence, University of Johannesburg, Johannesburg, South Africa

14 <sup>4</sup>School of Public Health and Preventive Medicine, Monash University, Melbourne, Australia

15 <sup>5</sup>Institute of Health and Allied Professions, School of Social Sciences, Nottingham Trent

16 University, United Kingdom

17 <sup>6</sup>Department of Population Health Sciences, Bristol Medical School, University of Bristol,

18 United Kingdom

19

20 \* Corresponding author: [neal.haddaway@sei.org](mailto:neal.haddaway@sei.org); [neal\\_haddaway@hotmail.com](mailto:neal_haddaway@hotmail.com)

## 21 **Abstract**

### 22 *Background*

23 Reporting standards, such as PRISMA aim to ensure that the methods and results of  
24 systematic reviews are described in sufficient detail to allow full transparency. Flow diagrams  
25 in evidence syntheses allow the reader to rapidly understand the core procedures used in a  
26 review and examine the attrition of irrelevant records throughout the review process. Recent  
27 research suggests that use of flow diagrams in systematic reviews is poor and of low quality  
28 and called for standardised templates to facilitate better reporting in flow diagrams. The  
29 increasing options for interactivity provided by the Internet gives us an opportunity to  
30 support easy-to-use evidence synthesis tools, and here we report on the development of tools  
31 for the production of PRISMA 2020-compliant systematic review flow diagrams.

### 32 *Methods and Findings*

33 We developed a free-to-use, Open Source R package and web-based Shiny app to allow users  
34 to design PRISMA flow diagrams for their own systematic reviews. Our tools allow users to  
35 produce standardised visualisations that transparently document the methods and results of a  
36 systematic review process in a variety of formats. In addition, we provide the opportunity to  
37 produce interactive, web-based flow diagrams (exported as HTML files), that allow readers to  
38 click on boxes of the diagram and navigate to further details on methods, results or data files.  
39 We provide an interactive example here; <https://driscoll.ntu.ac.uk/prisma/>.

### 40 *Conclusions*

41 We have developed a user-friendly suite of tools for producing PRISMA 2020-compliant flow  
42 diagrams for users with coding experience and, importantly, for users without prior  
43 experience in coding by making use of Shiny. These free-to-use tools will make it easier to  
44 produce clear and PRISMA 2020-compliant systematic review flow diagrams. Significantly,  
45 users can also produce interactive flow diagrams for the first time, allowing readers of their  
46 reviews to smoothly and swiftly explore and navigate to further details of the methods and  
47 results of a review. We believe these tools will increase use of PRISMA flow diagrams,  
48 improve the compliance and quality of flow diagrams, and facilitate strong science  
49 communication of the methods and results of systematic reviews by making use of

50 interactivity. We encourage the systematic review community to make use of these tools, and  
51 provide feedback to streamline and improve their usability and efficiency.

52

53 **Keywords:** evidence synthesis; flowchart; radical transparency; rapid review; scoping review;

54 systematic literature review; data visualisation

## 55 **Introduction**

### 56 *Evidence synthesis reporting standards*

57 Evidence syntheses (e.g. systematic reviews and evidence maps) typically aim to reliably  
58 synthesise an evidence base, and are based on state-of-the-art methodologies designed to  
59 maximise comprehensiveness (or representativeness), procedural objectivity, and  
60 reproducibility, whilst minimising subjectivity and risk of bias (1, 2). Reproducibility is made  
61 possible through a high degree of transparency when reporting the planned or final methods  
62 used in a review protocol or final report. Reporting standards, such as PRISMA (Preferred  
63 Reporting Items for Systematic reviews and Meta-Analyses (3)) and ROSES (RepOrting  
64 standards for Systematic Evidence Syntheses (4)), aim to ensure that review methods and  
65 findings are described in sufficient detail.

66 In 2009, the PRISMA statement – a reporting guideline designed primarily for systematic  
67 reviews of health interventions – was released (3, 5). The guideline was developed by a  
68 consortium of systematic reviewers, methodologists and journal editors to address evidence of  
69 incomplete reporting in systematic reviews (6), with recommendations formed largely based  
70 on expert consensus obtained via Delphi surveys and consensus meetings. The PRISMA  
71 statement has been widely endorsed and adopted by journals, and evidence suggests use of  
72 the guideline is associated with more complete reporting of systematic reviews (7). However,  
73 to address the many innovations in methods for systematic reviews, changes in terminology,  
74 and new options to disseminate research evidence that have occurred since 2009, an update to  
75 the guideline (referred to now as PRISMA 2020 (8)) has recently occurred.

76

### 77 *Review flow diagrams*

78 Flow diagrams in evidence syntheses allow the reader to rapidly understand the core  
79 procedures used in a review and examine the attrition of irrelevant records throughout the

80 review process. The PRISMA flow diagram published in 2009 describes the sources, numbers  
81 and fates of all identified and screened records in a review (for more details, see the original  
82 flow diagram (3) and an update from 2014 (9)). A recent assessment of the quality and use of  
83 flow diagrams in systematic reviews found that only 50% of identified reviews made use of  
84 flow diagrams, with their quality generally being low and not significantly improving over  
85 time (quality defined by the presence of critical data on the flow of studies through a review  
86 (10)): as a result, the authors called for a standardised flow diagram template to improve  
87 reporting quality.

88

89 Several changes were made to the original PRISMA flow diagram in the 2020 update (8). The  
90 2020 template: (i) recommends authors specify how many records were excluded before  
91 screening (e.g. because they were duplicate records that were removed, or marked as  
92 ineligible by automation tools); (ii) recommends authors specify how many full text reports  
93 were sought for retrieval and how many were not retrieved; (iii) gives authors the option to  
94 specify how many studies and reports included in a previous version of the review were  
95 carried over into the latest iteration of the review (if an updated review); and (iv) gives  
96 authors the option to illustrate the flow of records through the review as separated by type of  
97 source (e.g. bibliographic databases, websites, organisation and citation searching). Also, the  
98 phrase “studies included qualitative synthesis” has been replaced with “studies included in  
99 review”, given the former phrase has been incorrectly interpreted by some users as referring  
100 to syntheses of qualitative data. Furthermore, the recommendation to report in the flow  
101 diagram the number of studies included in quantitative synthesis (e.g. meta-analysis) has been  
102 removed, given a systematic review typically includes many quantitative syntheses, and the  
103 number of studies included in each varies (e.g. one meta-analysis might include 12 studies,  
104 another might include five).

105

## 106 *Transparency and Open Science in evidence syntheses*

107 Broadly speaking, the Open Science movement aims to promote research integrity,  
108 experimental and analytical repeatability and full transparency, from project inception to  
109 publication and communication. Various definitions and frameworks for Open Science have  
110 been proposed (e.g. Open Data, Open Methods, Open Access, Open Source proposed by  
111 Kraker et al. (11), and 44 components by Knoth and Pontika (12)). In addition, the FAIR  
112 principles (Findability, Accessibility, Interoperability and Reusability (13)) aim to ensure that  
113 available data can be readily retrieved and used. In addition, licensing can be used to specify  
114 what can be done with the data once it has been accessed (14).

115  
116 The application of Open Science principles to evidence synthesis has been explored by  
117 Haddaway (15), defined as *Open Synthesis*: the concept has since been expanded to cover 10  
118 proposed components ([Open Synthesis Working Group 2020](#)). Open Synthesis is important  
119 and beneficial for a number of key reasons (15): 1) there is a need to be able to access and  
120 verify methods used in reviews and allow interrogation of the fate of each record in the review  
121 process; 2) in order to reduce research waste, data collected within a review should be made  
122 publicly accessible and readily reusable in replications, updates and overlapping reviews; 3)  
123 capacity building via learning-by-doing is facilitated by having access to machine readable  
124 data and code from a review.

125

126

## 127 *Interactivity and Web 2.0*

128 Systematic review flow diagrams undoubtedly facilitate rapid comprehension of basic review  
129 methodology. However, they have far greater potential as a tool for communication and  
130 transparency when used not only as static graphics, but also as interactive 'site maps' for  
131 reviews. This is the essence of the concept 'Web 2.0'; a rethinking of the internet as a tool for  
132 interactivity, rather than simply passive communication (16). Flow diagrams in their crudest

133 sense consist of inputs, processes and outputs, with the 'nodes' (i.e. boxes) in a systematic  
134 review flow diagram containing summaries of the numbers of records included or excluded at  
135 each stage, and 'edges' (i.e. arrows) indicating the 'flow' or movement of records from  
136 information sources, through the screening stages of the review, to the final set of included  
137 studies. For each node, there is a rich set of information relating both to the methods used and  
138 the respective associated records: for example, the number of records excluded at full text  
139 eligibility screening are presented alongside a summary of the reasons for exclusion.

140

141 In a static review document, it may require substantial effort to determine the methods used to  
142 process records or the underlying records themselves. Indeed, the difficulty in locating the  
143 relevant information (particularly if stored in supplementary data) often hampers peer-review  
144 and editorial assessment. This is one of the key reasons that reporting standards require  
145 authors to specify the location of relevant information in review protocols or reports (e.g. see  
146 the PRISMA checklist; <http://www.prisma-statement.org/PRISMAStatement/Checklist>).

147 However, if we repurpose the flow diagram from a static element to an interactive 'site map'  
148 of the review, readers may immediately navigate to relevant information regarding review  
149 methods, inputs and outputs. Cross-linking between different elements of a review may help  
150 to facilitate the validation and assessment of systematic reviews and make it far easier to  
151 access and reuse their methods, data and code. Such interactivity could be achieved through  
152 hyperlinking within static digital files, such as PDF (portable document format) files, or  
153 through web-based visualisations that would facilitate updating or 'living reviews' (16).

154

155 Furthermore, by embedding and nesting relevant information behind an interactive  
156 visualisation such as a flow diagram, review authors could make use of a key concept in  
157 science communication: that of *simplification*. Simplification is a key principle in audio-visual  
158 science communication (17) and relies on prioritisation of information rather than 'dumbing  
159 down' (18). Extensive detail on the methods employed and on the reporting of information  
160 sources, data inputs and outputs could be accessed via hyperlinks, with core information  
161 placed front-and-centre. This layered or nested approach to science communication would

162 allow the reader to choose how much and what type of information to view, rather than the  
163 linear format currently used across science publishing.



## 164 **Methods**

### 165 *Objectives*

166 This project had the following aims:

- 167 1) to develop a novel package for the R programming environment (19) for producing  
168 systematic review flow diagrams that conform to the latest update of the PRISMA  
169 statement (8);
- 170 2) to adapt this code and publish a free-to-use, web-based tool (a *Shiny app*) for  
171 producing publication-quality flow diagram figures without any necessary prior  
172 coding experience;
- 173 3) to allow users to produce interactive versions of the flow diagrams that include  
174 hyperlinks to specific web pages, files or document sections.

175

176 The project was produced collaboratively as part of the Evidence Synthesis Hackathon  
177 (<https://www.eshackathon.org>) using a combination of languages (R, DOT, HTML and  
178 JavaScript) with the aim of being provided to the public as a free and open source R package  
179 and Shiny app. The project code was published and managed on GitHub ((20);  
180 <https://github.com/nealhaddaway/PRISMA2020>) and the Shiny app is hosted on a  
181 subscription-based Shiny server paid for by the Stockholm Environment Institute  
182 ([https://estech.shinyapps.io/prisma\\_flowdiagram](https://estech.shinyapps.io/prisma_flowdiagram)). Code has been annotated and  
183 documented in line with coding best practices and to facilitate understanding and reuse. At  
184 the time of submission, the *PRISMA2020* package has been submitted to CRAN (the  
185 Comprehensive R Archive Network) for publication in their archive of R packages.

## 186 **Results**

187 In the following pages, we summarise the functionality of the R package and Shiny app,  
188 providing a summary in lay terms, along with a more detailed description for the code-savvy  
189 ('Code detail' boxes). Functions are indicated by courier font, whilst packages are indicated by  
190 italics.

191

192 *The PRISMA2020 R package*

193 Functionality:

### 194 **1. Data import and cleaning**

195 The data needed for the `PRISMA_flowdiagram()` function can be entered either directly as a  
196 set of numbers or R objects, but data upload can be facilitated by using a template comma  
197 separated value (CSV) file (see Table 1). We recommend the use of a CSV file as opposed to  
198 manually inputting numbers, as this allows for better reproducibility/transparency, as the  
199 underlying CSV can be shared. This file can be edited to a large extent and the edits  
200 incorporated into the text, numbers, hyperlinks and tooltips used to make the plot.

201

**Table 1.** Contents of the template CSV file for data upload.

data	node	box	description	boxtext	tooltips	url	n
NA	node4	prevstud	Grey title box; Previous studies	Previous studies	Grey title box; Previous studies	prevstud.html	xxx
previous_studies	node5	box1	Studies included in previous version of review	Studies included in previous version of review	Studies included in previous version of review	previous_studies.html	xxx
previous_reports	NA	box1	Reports of studies included in previous version of review	Reports of studies included in previous version of review	NA	previous_reports.html	xxx
NA	node6	newstud	Yellow title box; Identification of new studies via databases and registers	Identification of new studies via databases and registers	Yellow title box; Identification of new studies via databases and registers	newstud.html	xxx
database_results	node7	box2	Records identified from: Databases	Databases	Records identified from: Databases	database_results.html	xxx
register_results	NA	box2	Records identified from: Registers	Registers	NA	NA	xxx
NA	node16	othstud	Grey title box; Identification of new studies via other methods	Identification of new studies via other methods	Grey title box; Identification of new studies via other methods	othstud.html	xxx
website_results	node17	box11	Records identified from: Websites	Websites	Records identified from: Websites	website_results.html	xxx
organisation_results		box11	Records identified from: Organisations	Organisations	NA	NA	xxx
citations_results	NA	box11	Records identified from: Citation searching	Citation searching	NA	NA	xxx
duplicates	node8	box3	Duplicate records	Duplicate records	Duplicate records	duplicates.html	xxx
excluded_automatic	NA	box3	Records marked as ineligible by automation tools	Records marked as ineligible by automation tools	NA	NA	xxx
excluded_other	NA	box3	Records removed for other reasons	Records removed for other reasons	NA	NA	xxx
records_screened	node9	box4	Records screened (databases and registers)	Records screened	Records screened (databases and registers)	records_screened.html	xxx
records_excluded	node10	box5	Records excluded (databases and registers)	Records excluded	Records excluded (databases and registers)	records_excluded.html	xxx
dbr_sought_reports	node11	box6	Reports sought for retrieval (databases and registers)	Reports sought for retrieval	Reports sought for retrieval (databases and registers)	dbr_sought_reports.html	xxx
dbr_notretrieved_reports	node12	box7	Reports not retrieved (databases and registers)	Reports not retrieved	Reports not retrieved (databases and registers)	dbr_notretrieved_reports.html	xxx
other_sought_reports	node18	box12	Reports sought for retrieval (other)	Reports sought for retrieval	Reports sought for retrieval (other)	other_sought_reports.html	xxx
other_notretrieved_reports	node19	box13	Reports not retrieved (other)	Reports not retrieved	Reports not retrieved (other)	other_notretrieved_reports.html	xxx
dbr_assessed	node13	box8	Reports assessed for eligibility (databases and registers)	Reports assessed for eligibility	Reports assessed for eligibility (databases and registers)	dbr_assessed.html	xxx
dbr_excluded	node14	box9	Reports excluded (databases and registers): [separate reasons and numbers using ; e.g. Reason1, xxx; Reason2, xxx; Reason3, xxx	Reports excluded:	Reports excluded (databases and registers): [separate reasons and numbers using ; e.g. Reason1, xxx; Reason2, xxx; Reason3, xxx	dbrexcludedrecords.html	Reason1, xxx; Reason2, xxx; Reason3, xxx
other_assessed	node20	box14	Reports assessed for eligibility (other)	Reports assessed for eligibility	Reports assessed for eligibility (other)	other_assessed.html	xxx
other_excluded	node21	box15	Reports excluded (other): [separate reasons and numbers using ; e.g. Reason1, xxx; Reason2, xxx; Reason3, xxx	Reports excluded:	Reports excluded (other): [separate reasons and numbers using ; e.g. Reason1, xxx; Reason2, xxx; Reason3, xxx	other_excluded.html	Reason1, xxx; Reason2, xxx; Reason3, xxx
new_studies	node15	box10	New studies included in review	New studies included in review	New studies included in review	new_studies.html	xxx
new_reports	NA	box10	Reports of new included studies	Reports of new included studies	NA	NA	xxx
total_studies	node22	box16	Total studies included in review	Total studies included in review	Total studies included in review	total_studies.html	xxx
total_reports	NA	box16	Reports of total included studies	Reports of total included studies	NA	NA	xxx
identification	node1	identification	Blue identification box	Identification	Blue identification box	identification.html	xxx
screening	node2	screening	Blue screening box	Screening	Blue screening box	screening.html	xxx
included	node3	included	Blue included box	Included	Blue included box	included.html	xxx

204 The function `PRISMA_read()` reads in a template CSV file containing data to display in the  
205 flow diagram, including text contents, quantitative data (i.e. the number of records in each  
206 box), tooltips (i.e. the text that appears when the mouse hovers over a box), and hyperlinks for  
207 ‘on click’ functionality. The output is a list of named objects that can be read directly into  
208 `PRISMA_flowdiagram()`.

209

**Code detail:** The `PRISMA_read()` function uses text matching against a set of node (or box) names to assign the uploaded data to the appropriate box in the figure, for example:

```
previous_studies <- data[grep('previous_studies', data[,1]),]$n
```

210

211

## 212 2. Creating a static flow diagram

213 The function `PRISMA_flowdiagram()` produces a PRISMA 2020-style flow diagram for  
214 systematic reviews. In summary, boxes are placed at specific locations across the graph, and  
215 they are automatically connected with arrows according to a specified set of connections.

216

**Code detail:** `PRISMA_flowdiagram()` uses the `grViz()` function from the *DiagrammeR* package (21) to plot a DOT graphic using `layout = neato` to explicitly place ‘nodes’ (boxes) at a particular location and `splines='ortho'` to specify axis-aligned edges are drawn between nodes. The label (including data) and tooltip for each node is read in within the main text of the function by using `paste()` to combine DOT strings and R objects.

217

218 Along with the text, data, tooltips and hyperlinks, users can specify whether to plot the  
219 ‘previous studies’ arm or the ‘other studies’ arm of the flow diagram by specifying these  
220 options within the `PRISMA_flowdiagram()` function.

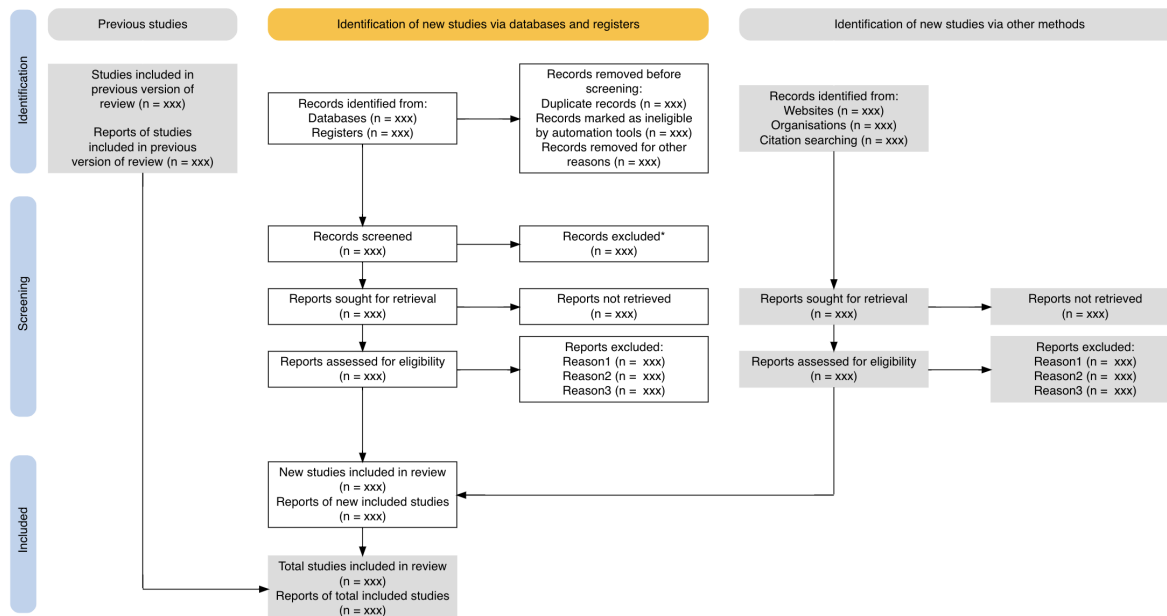
221

222 In addition, the font, box fill, box line colour and line arrow head / tail can be altered as  
223 desired.  
224

**Code detail:** Since text rotation is not supported in DOT or *DiagrammeR*, the vertical labels for the left-hand blue bars are added via JavaScript appending using the `appendContent()` and `onStaticRenderComplete()` functions from the `htmlwidgets` package (22) to append a block of JavaScript to the HTML output.

First, within the R code, a placeholder label is created consisting of a single whitespace. The JavaScript code uses the `document.getElementById()` to locate each of the blue bar nodes and replace the whitespace with the appropriate label. A CSS transform is applied to rotate the label by 90 degrees and the correct x and y coordinates for the new label are calculated based on their previous values. This means that the label location is adjusted based on the presence or absence of the `previous` and `other` arms and is able to withstand changes to the diagram format moving forward.

225  
226 The function also includes the ability to plot an interactive version if the function parameter is  
227 set to 'TRUE', as described in Point 4, below.  
228  
229 The final plot output (see Figure 1) can be saved in a range of file formats (HTML, PDF, PNG,  
230 SVG, PS or WEBP).



231  
232 **Figure 1.** The full output plot from the `PRISMA_flowdiagram()` function.

233

### 234 3. Creating an interactive flow diagram

235 Flow diagrams can be made interactive by specifying the additional parameter `interactive`  
236 `= TRUE` (this defaults to `FALSE`) in the `PRISMA_flowdiagram()` function. The resulting HTML  
237 output plot includes hyperlinks on click for each box, along with the tooltips specified in the  
238 main `PRISMA_flowdiagram()` function (see above).

239

**Code detail:** The internal function `PRISMA_interactive_()` uses the `prependContent()` and `onStaticRenderComplete()` functions from the `htmlwidgets` package (22) to prepend a block of JavaScript to the HTML output. This JavaScript identifies each node in turn using `getElementById(id)` and inserts an HTML anchor element carrying the relevant hyperlink for each node using the internal function `PRISMA_add_hyperlink_()`.

240

### 241 4. Saving the output as a file

242 The `PRISMA_save()` function allows for the flow diagram to be saved as a standalone HTML  
243 file (with interactivity preserved), or as a PDF, PNG, SVG, PS or WEBP file (without  
244 interactivity). This function takes the plot produced by `PRISMA_flowdiagram()` and saves the

245 file. A default option for filename is provided, but this can be overridden along with the  
246 filetype which is calculated from the file extension by default.

247

248

**Code detail:** When saving as HTML, the `PRISMA_save()` function uses the `savewidget()` function from the `htmlwidgets` package (22). When saving as other formats, the internal function `PRISMA_gen_tmp_svg()` is used, this first uses `savewidget()` to create an HTML file in a temporary directory and then uses the various XML manipulation functions from the `xml2` package (23) to step through the HTML, using `xpath` (24) to find the SVG embedded within the HTML.

As JavaScript is not supported in SVG files, the `xml2` package is again used to add a rotate transformation and programmatically alter the x and y coordinates to create the blue vertical labels. Following this, the temporary SVG is either copied to its final destination, or the `rsvg` (25) package is used to convert it into the desired output format.

249

250

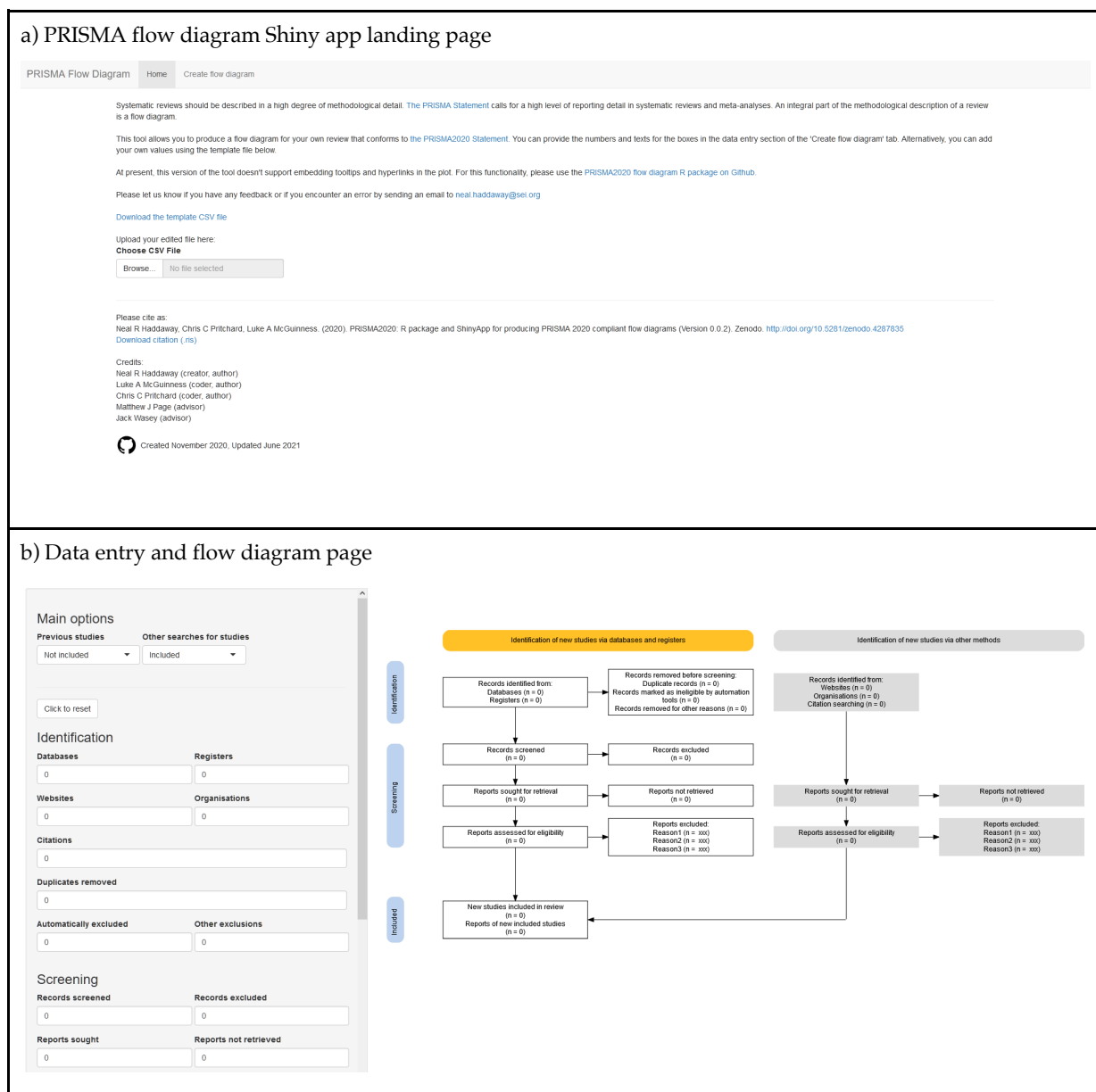
### 251 *The Shiny app*

252 Shiny is a package within the R environment that allows users to construct standalone web-  
253 based applications based on R functions (26). The 'app' can be interacted with by entering  
254 data, running functions with user-specified settings to plot figures, and downloading the  
255 resultant figures in a variety of formats.

256

257 The *PRISMA2020* Shiny app is available free-of-charge and can be found through the PRISMA  
258 website (<http://prisma-statement.org/>). The app landing page (the 'Home' tab) describes the  
259 app and its background, linking to the PRISMA website and PRISMA 2020 statement (8) (see  
260 Figure 2). Users can enter their data either by uploading an edited template CSV file, or by

261 manually entering data in the 'Create flow diagram' tab. Once uploaded, users proceed to this  
262 tab to see the resultant figure.  
263

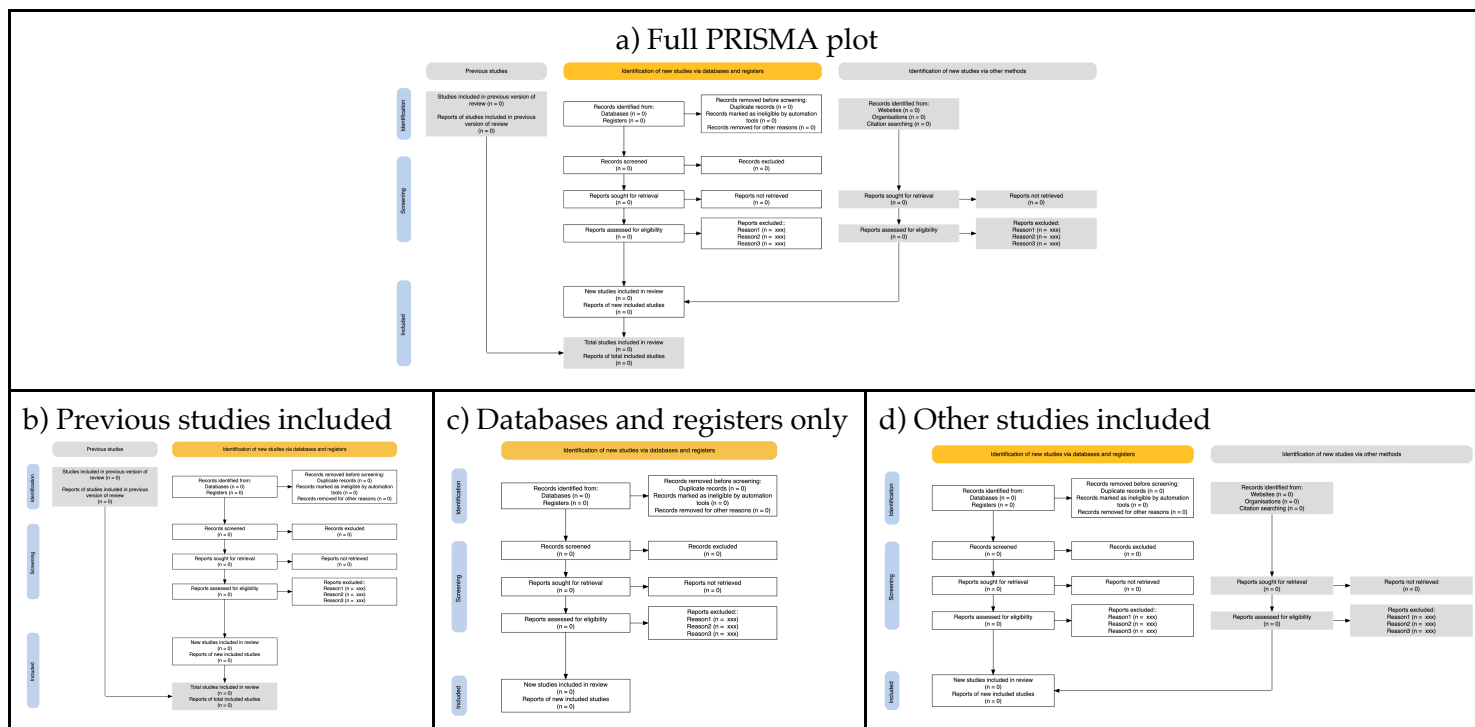


264 **Figure 2.** Screenshot of the PRISMA2020 Shiny app a) landing page and b) data entry and diagram  
265 visualisation page.

266  
267 On the 'Create flow diagram' tab users can specify whether to include the 'previous studies'  
268 and 'other studies' arms of the flow diagram using the check boxes. The resulting flow  
269 diagram (see Figure 3). The 'Previous studies' and 'Other studies' arms can be toggled on and  
270 off via the 'Data upload' tab and the plot responds reactively.



271



272 **Figure 3.** The possible layouts that can be obtained via the ‘previous studies’ and ‘other studies’ arms  
 273 checkboxes. a) the full plot; b) other studies omitted; c) previous studies and other studies omitted; d)  
 274 previous studies omitted.

275

276

277 Whilst interactivity isn’t possible using the Shiny app itself, the app allows for the download  
 278 of an interactive HTML plot. The links themselves can only be customised through the upload  
 279 of a custom CSV file, rather than through the web interface.

280

**Code detail:** Shiny does not support HTML appending or prepending (adding code before or after a given element) via *DiagrammeR*. Instead, a different method is used to label the blue nodes. The javascript file `labels.js` is included via a script tag inserted in the `<head>` area of the shiny HTML pages. This contains several functions, the `renderLabel()` function adds a label to the given node, in the same way as the JS appends in *DiagrammeR*.

The `createLabels()` function is called just before the plot is re-rendered, this registers a `MutationObserver` that waits for the nodes to be created. Once the nodes are visible to the DOM (Document Object Model, a programming interface for HTML), the `renderLabel()` function is called, once for each node, to add the labels.

281

282

### 283 *Interactivity*

284 The interactivity here represents an additional step to cross link and host the interactive  
285 PRISMA flow diagram with the relevant texts and data. This obviously corresponds to  
286 additional effort on the behalf of review authors, but has clear benefits for transparency and  
287 communication.

288

289 Interactivity in the *PRISMA2020* flow diagrams is provided in 2 ways. Firstly, mouse-over  
290 tooltips appear as the user's mouse is moved over a particular box. These popup boxes can  
291 contain user-specified text providing more information as desired. For example, a short  
292 elaboration of the numbers of text in each box in order to clarify meanings. Alternatively,  
293 tooltips can provide an explanation of the information that will be hyperlinked to on clicking.  
294 Secondly, the boxes can be given hyperlinks so that the user can follow a predetermined link.  
295 These links can be anchors within a document or webpage, or datafiles or web pages stored on  
296 external or local repositories (e.g. supplementary files on a data repository such as figshare or  
297 Zenodo).

298

299 As described above, this interactivity conforms to the principle of science communication  
300 simplicity by prioritising information provision hierarchically (i.e. showing critical  
301 information first, with further details accessible on interrogation). Tooltips provide a semi-  
302 passive means of providing information: the user is exposed to further details as they move  
303 their mouse over the plot. Hyperlinks are an active means of requesting further information.

304 This nested, hierarchical provision of information may be particularly useful for complex  
305 systematic review methodology.

306

307 It is worth noting that users should ensure they do not breach bibliographic database (and  
308 other) Terms of Use or inadvertently infringe copyright by linking to directly exported search  
309 results or including copyrighted data such as abstracts. Many providers would not count this  
310 form of transparency as outside acceptable use, but we encourage users to be certain for the  
311 resources they have used. One way to avoid this would be to provide a digitised (e.g. comma-  
312 separated text file) list of digital object identifiers for all records linked to in an interactive  
313 version of the flow diagram: this would contravene neither copyright nor Terms of Use and  
314 could be transformed into a full set of citations using freely accessible resources like CrossRef.

315

316

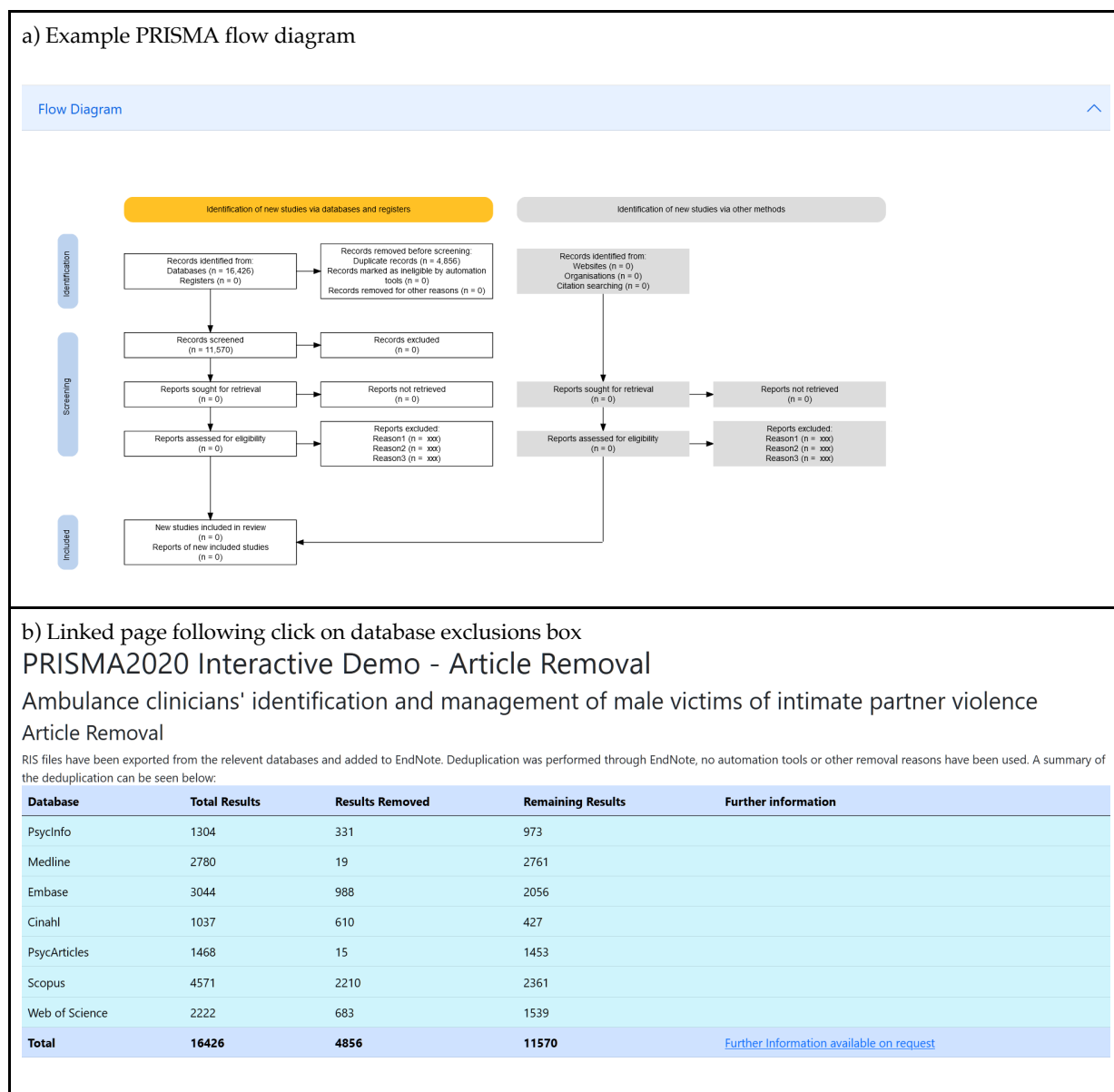
### 317 *Case study*

318 We have prepared a case study that demonstrates possible interactivity that can be employed  
319 in a web-based *PRISMA2020* flow diagram (see Figure 4). The example website is available at  
320 <https://driscoll.ntu.ac.uk/prisma/>.

321

322 The website is based on data from an ongoing systematic review into ambulance clinician  
323 responses to adult male victims of intimate partner violence (27). The site uses a flowchart  
324 generated from this software, alongside bootstrap (<https://getbootstrap.com>) to make a fully  
325 interactive experience, enabling users to interrogate various aspects of the review. As the  
326 review is currently underway, the site will be updated as the review progresses.

327



328 **Figure 4.** Screenshot of the case study website, showing the PRISMA flow diagram (a) and the resulting page  
 329 linked to by clicking on the database exclusions box (b).

## 330 **Discussion**

331 The PRISMA 2020 update represents a significant development of the PRISMA statement,  
332 increasing the usability and level of detail needed in systematic reviews. The *PRISMA2020*  
333 flow diagram similarly provides a clearer and more detailed template. We have developed a  
334 user-friendly suite of tools for producing PRISMA 2020-compliant flow diagrams for users  
335 with coding experience and, importantly, for users without prior experience in coding by  
336 making use of Shiny. These free-to-use tools will make it easier to produce clear and PRISMA  
337 2020-compliant systematic review flow diagrams. Significantly, users can also produce  
338 interactive flow diagrams for the first time, allowing readers of their reviews to smoothly and  
339 swiftly explore and navigate to further details of the methods and results of a review.

340  
341 In addition, the ability to produce flow diagrams using code in a data-driven approach carries  
342 with it a number of benefits, including: facilitating Open Science (specifically Open Code);  
343 reducing the risk of transcription errors; and, opening up possibilities for reproducible  
344 documents such as executable research articles (28) and communicating the results of living  
345 systematic reviews (17).

346  
347 We believe these tools will increase use of PRISMA flow diagrams, improve the compliance  
348 and quality of flow diagrams, and facilitate strong science communication of the methods and  
349 results of systematic reviews by making use of interactivity. We encourage the systematic  
350 review community to make use of these tools, and provide feedback to streamline and  
351 improve their usability and efficiency.

## 352 **Acknowledgements**

353 We thank Jack Wasey for his work on an R package for PRISMA 2009-compliant flow  
354 diagrams. We also thank the many users of the beta version of the R package and Shiny App  
355 for feedback instrumental in improving the user experience. This work is a project of the  
356 Evidence Synthesis Hackathon (<https://www.eshackathon.org/software/PRISMA2020.html>).

357

### 358 *Author contributions*

359 This manuscript, the R package and the Shiny App were conceived and drafted by Neal  
360 Haddaway. Substantial code improvements were made by Luke McGuinness and Chris  
361 Pritchard. Matthew Page provided conceptual feedback. All authors contributed to the editing  
362 and revision of the manuscript, and have read and agreed to publication in its final form.

363

### 364 *Conflicts of interest*

365 Matthew Page co-led the development of the PRISMA 2020 statement and Luke McGuinness  
366 is a co-author of the PRISMA 2020 statement, but they have no commercial interest in the use  
367 of this reporting guideline.

## 368 References

- 369 1. Higgins JP, Thomas J, Chandler J, Cumpston M, Li T, Page MJ, et al. Cochrane  
370 handbook for systematic reviews of interventions: John Wiley & Sons; 2019.
- 371 2. Collaboration for Environmental Evidence. Guidelines and Standards for Evidence  
372 Synthesis in Environmental Management: Version 5.0. Project Report. 2018.
- 373 3. Moher D, Liberati A, Tetzlaff J, Altman DG, Group P. Preferred reporting items for  
374 systematic reviews and meta-analyses: the PRISMA statement. *PLoS medicine*.  
375 2009;6(7):e1000097.
- 376 4. Haddaway NR, Macura B, Whaley P, Pullin AS. ROSES RepOrting standards for  
377 Systematic Evidence Syntheses: pro forma, flow-diagram and descriptive summary of the plan  
378 and conduct of environmental systematic reviews and systematic maps. *Environmental  
379 Evidence*. 2018;7(1):1-8.
- 380 5. Liberati A, Altman DG, Tetzlaff J, Mulrow C, Gøtzsche P, Ioannidis J. The PRISMA  
381 statement for reporting systematic and meta-analyses of studies that evaluate interventions:  
382 explanation and elaboration. *PLoS Medicine*. 2009;6(7):1-28.
- 383 6. Moher D, Tetzlaff J, Tricco AC, Sampson M, Altman DG. Epidemiology and reporting  
384 characteristics of systematic reviews. *PLoS medicine*. 2007;4(3):e78.
- 385 7. Page MJ, Shamseer L, Altman DG, Tetzlaff J, Sampson M, Tricco AC, et al.  
386 Epidemiology and reporting characteristics of systematic reviews of biomedical research: a  
387 cross-sectional study. *PLoS medicine*. 2016;13(5):e1002028.
- 388 8. Page MJ, McKenzie JE, Bossuyt PM, Boutron I, Hoffmann TC, Mulrow CD, et al. The  
389 PRISMA 2020 statement: an updated guideline for reporting systematic reviews. *Bmj*.  
390 2021;372.
- 391 9. Stovold E, Beecher D, Foxlee R, Noel-Storr A. Study flow diagrams in Cochrane  
392 systematic review updates: an adapted PRISMA flow diagram. *Systematic reviews*.  
393 2014;3(1):1-5.
- 394 10. Vu-Ngoc H, Elawady SS, Mehyar GM, Abdelhamid AH, Mattar OM, Halhouli O, et al.  
395 Quality of flow diagram in systematic review and /or meta-analysis. *PloS one*.  
396 2018;13(6):e0195955.
- 397 11. Kraker P, Leony D, Reinhardt W, Beham G. The case for an open science in technology  
398 enhanced learning. *International Journal of Technology Enhanced Learning*. 2011;3(6):643-54.
- 399 12. Pontika N, Knoth P. Open science taxonomy. 2015.
- 400 13. Wilkinson MD, Dumontier M, Aalbersberg IJ, Appleton G, Axton M, Baak A, et al. The  
401 FAIR Guiding Principles for scientific data management and stewardship. *Scientific data*.  
402 2016;3(1):1-9.
- 403 14. Ehrig-Page K. Using Creative Commons Licenses and Creative Commons Licensed  
404 Works. 2020.
- 405 15. Haddaway NR. Open Synthesis: on the need for evidence synthesis to embrace Open  
406 Science. *Environmental evidence*. 2018;7(1):1-5.
- 407 16. Blank G, Reisdorf BC. The participatory web: A user perspective on Web 2.0.  
408 *Information, Communication & Society*. 2012;15(4):537-54.
- 409 17. Elliott JH, Synnot A, Turner T, Simmonds M, Akl EA, McDonald S, et al. Living  
410 systematic review: 1. Introduction—the why, what, when, and how. *Journal of clinical  
411 epidemiology*. 2017;91:23-30.
- 412 18. Finkler W, Leon B. The power of storytelling and video: a visual rhetoric for science  
413 communication. *Journal of science communication*. 2019;18(5):A02.
- 414 19. Team RDC. R (version 3.5. 3). R: A language and environment. 2018.
- 415 20. Haddaway N, McGuinness L, Pritchard C. PRISMA2020: R package and ShinyApp for  
416 producing PRISMA 2020 compliant flow diagrams (Version 0.0.1). Zenodo. 2021.
- 417 21. Iannone R, Iannone MR. Package 'DiagrammeR'. 2020.
- 418 22. Vaidyanathan R, Xie Y, Allaire J, Cheng J, Russell K. htmlwidgets: HTML Widgets for  
419 R. R package version 06. 2018.
- 420 23. Wickham H, Hester J, Ooms J. xml2: Parse XML. R package version 1.2. 0. 2018.
- 421 24. Dyck M, Robie J, Snelson J, Chamberlin D. XML path language (XPath) 3.1. W3C  
422 Working Draft. 2014.

- 423 25. Ooms J. rsvg: Render SVG Images into PDF, PNG, PostScript, or Bitmap Arrays R  
424 package version 1.1. R Foundation for Statistical Computing; 2017.
- 425 26. Beeley C. Web application development with R using Shiny: Packt Publishing Ltd;  
426 2013.
- 427 27. Mackay J, Pritchard C, Jieru Yan R, Kuhn I, Barker E. Ambulance clinicians'  
428 identification and management of male victims of intimate partner violence: a systematic  
429 review protocol PROSPERO. 2021;CRD42021253584.
- 430 28. Tsang E, Maciocci G. Welcome to a new ERA of reproducible publishing. eLIFE Labs.  
431 2020.  
432