

1 **Title: Prospective genomic surveillance reveals cryptic MRSA outbreaks with local to**
2 **international origins among NICU patients.**

3 **Authors:** Jay N. Worley^{a,b}, Jessica W. Crothers^c, William J. Wolfgang^d, Sai Laxmi Gubbala
4 Venkata^d, Maria Hoffmann^e, Victor Jayeola^e, Michael Klompas^{f,g}, Marc Allard^e, and Lynn
5 Bry^{a,h*}

- 6 a) Massachusetts Host-Microbiome Center, Department of Pathology, Brigham and
7 Women's Hospital, Harvard Medical School, Boston, MA, USA
8 b) National Center for Biotechnology Information, National Library of Medicine, National
9 Institutes of Health, Bethesda, MD, USA
10 c) Department of Pathology and Laboratory Medicine, University of Vermont Medical
11 Center, Burlington VT USA. Translational Global Infectious Disease Research Center,
12 Larner College of Medicine, University of Vermont Burlington VT USA.
13 d) Wadsworth Center, Division of Infectious Diseases, New York State Department of
14 Health, Albany, NY, USA
15 e) Center for Food Safety and Nutrition, US Food and Drug Administration, College Park,
16 MD, USA
17 f) Department of Population Medicine, Harvard Medical School and Harvard Pilgrim
18 Health Care Institute, Boston, Massachusetts, USA
19 g) Division of Infectious Diseases, Department of Medicine, Brigham and Women's
20 Hospital, Harvard Medical School, Boston, Massachusetts, USA
21 h) Clinical Microbiology Laboratory, Department of Pathology, Brigham and Women's
22 Hospital, Harvard Medical School, Boston, Massachusetts, USA
23

24 *Corresponding author
25

26 **Abstract:**

27 MRSA infections cause significant morbidity and mortality in neonates. Clinical testing and
28 routine surveillance screening identified an increase in neonates with MRSA colonization and
29 infection which triggered prospective genomic surveillance. Here we show the complex
30 transmission dynamics of MRSA in a NICU setting. Analyses revealed concurrent transmission
31 chains affecting 16 of 22 MRSA-colonized patients (68%), and 3.1% of all NICU patients
32 (n=517). Prematurity and longer lengths of stay increased risks for colonization. Intervals of up
33 to 7 months occurred among some cluster-related isolates. 3 of 22 MRSA-colonized patients
34 developed invasive infections with the colonizing strain. Comparisons with 21,521 isolates in the
35 NCBI Pathogen Detection Resource revealed NICU strains to be distinct from MRSA seen
36 locally and internationally. Integration of international strain datasets in analyses increased the
37 resolution of strain clusters and helped rule-out suspected transmission events. Analyses also
38 identified sequence type 1535 isolates, emergent in the Middle East, carrying a unique *SCCmec*
39 with *fusC* and *aac(6')-Ie/aph(2'')-1a* that provided a multi-drug resistant phenotype. NICU
40 genomic surveillance identified cryptic MRSA colonization events, including NICU-endemic
41 strains not linked with local hospital or international clusters, and has rich potential to guide
42 improvements in infection prevention for this vulnerable patient population.

43 **Introduction**

44 *Staphylococcus aureus* is a common cause of healthcare associated infections^{1,2}. The pathogen
45 can cause sepsis, respiratory and skin and soft tissue infections and is a major cause of patient
46 morbidity and mortality³. Methicillin-resistant *Staphylococcus aureus* (MRSA) colonization is a
47 well-recognized risk factor for infection^{4,5}. Efforts to reduce infections have focused on
48 decreasing MRSA transmission via institutional screening and decolonization^{6,7}.

49 Neonatal populations in general, and pre-term and low birthweight infants in particular,
50 are at increased risk of MRSA colonization and infection⁸⁻¹¹ given their lack of protective
51 colonizing microbiota and immature immune system^{4,12,13}. Nosocomial transmission of *S. aureus*
52 in neonates can occur among patients¹⁴⁻¹⁷, as well as from colonized healthcare workers¹⁸⁻²⁰,
53 parents^{21,22}, and environmental reservoirs²³. However, the relative contribution of these
54 reservoirs remains controversial^{13,24}. Additionally, neonatal intensive care units (NICUs) have
55 witnessed a shift over the past twenty years from hospital acquired MRSA strains to community-
56 acquired MRSA strains, requiring modifications in infection control practices for this patient
57 population^{3,25}.

58 Whole genome sequencing (WGS) enables epidemiologic outbreak investigations
59 through high-resolution strain tracking²⁶⁻²⁹. While *S. aureus* outbreak investigations have
60 historically used targeted molecular strain-typing, the discriminatory power of conventional
61 techniques has been largely insufficient to establish definitive genomic and strain-specific
62 linkages³⁰. In contrast, WGS enables definitive clonal assessments and associated temporal
63 relationships when combined with epidemiologic data³¹. Applied to NICU-populations, WGS
64 has improved the detection of patient-to-patient^{17,27} and healthcare worker transmission events³²⁻
65 ³⁴, environmental reservoirs of infection^{23,35}, and supported more effective MRSA screening

66 programs³⁶. Importantly, WGS can also rule-out nosocomial transmission events, providing
67 reassurance to staff and appropriate utilization of hospital resources^{29,37}.

68 The staphylococcal cassette chromosome *mec* (SCC*mec*) confers broad-spectrum
69 resistance to beta-lactam antibiotics and is a common genetic cause for the MRSA phenotype.
70 SCC*mecs* contain a *mec* gene encoding PBP2A, a peptidoglycan transpeptidase homolog of
71 PBP2 with reduced affinity for beta-lactam antibiotics, particularly cephalosporins³⁸. Many
72 SCC*mec* types, as well as non-*mec* SCCs, encode other resistance genes such as the fusidic acid
73 resistance gene *fusC*^{38,39}.

74 Observations of an increase in NICU MRSA colonizations and infections raised concerns
75 for transmission events among neonates. Genomic analyses identified multiple cryptic outbreaks
76 missed by clinical surveillance and diagnostic testing and also identified strain recurrences in
77 distinct time periods that could not be attributed solely to patient-to-patient transmission.
78 Expanded genomic analyses with >20,000 internationally deposited MRSA genomes in the
79 NCBI Pathogen Detection resource significantly improved the phylogenetic resolution of local
80 strain clusters and their dynamics of spread within the NICU, demonstrating the power of large-
81 scale comparative genomic analyses for local hospital efforts to improve clinical and
82 epidemiologic MRSA outbreak investigations.

83

84 **Results**

85 **Antibiotic resistance phenotypes of NICU MRSA trigger prospective genomic surveillance.**

86 MRSA NICU isolates were evaluated phenotypically for similar antibiotic resistance profiles
87 during a 341-day period over 2018-2019. Two suspected outbreaks during this targeted
88 surveillance period triggered prospective genomic surveillance of all MRSA isolates from days

89 342-558, in addition to sequencing of prior available isolates from days 1-341 (Figure 1,
90 Supplemental Figure 1). Over the 558 day period, 58 MRSA isolates, 55 screening and 3
91 diagnostic, were collected from 22 NICU patients. Of these patients, 16 neonates of 517 admitted
92 during the prospective genomic surveillance period had MRSA isolates identified, representing
93 3.1% of NICU patients.

94

95 **Prematurity and increased NICU lengths of stay elevate risks for MRSA colonization.**

96 MRSA colonization was significantly associated with prematurity as well as low-birth-weight
97 compared to non-colonized patients (Table 1, $q=0.002$; Supplemental Table 1). In addition to
98 prematurity and low birth weight, MRSA-colonized patients had longer average lengths of stay
99 in the NICU than non-colonized patients at 52.5 days (± 34.8 days) versus 20.0 days (± 24.8 days)
100 ($p < 0.001$). Prematurity was also associated with longer NICU lengths of stay than patients
101 carried to term (defined as >36 weeks of gestation), at 29.7 days (± 29.3 days) versus 6.8 days
102 (± 7.2 days), respectively (Supplemental Table 2).

103

104 **Genomic analyses identify 4 outbreak SNP clusters and unique NICU patient isolates.**

105 Genomic analyses using NCBI's Pathogen Detection Resource identified 6 SNP clusters that
106 accounted for 91.2% of sequenced NICU MRSA isolates originating from 17 of 22 MRSA-
107 colonized patients (Figure 1). The remaining 5 patients with non-clustered MRSA strains each
108 had short NICU admissions that yielded only one isolate. These 5 patient-unique isolates showed
109 no relationship to any *S. aureus* isolates deposited in NCBI and were not temporally linked to
110 other NICU transmission events (Supplemental Figure 1).

111 SNP clusters 1, 3, 4, and 5, involved multiple patients (Figure 2). Clusters 1 and 3 were
112 found across distinct time periods without patient overlap. The patient isolates in cluster 1
113 occurred in two separate intervals separated by 259 days, while strains in cluster 3 occurred
114 across three time periods separated by 49 and 56 days (Figure 1). In contrast, clusters 4 and 5
115 occurred within single time periods. Among the two other NCBI-associated clusters, cluster 2
116 included one NICU isolate that clustered with an isolate reported from another institution, but
117 was not clonally related (Supplemental File 2). Cluster 6 included two clonally-related isolates
118 from the same patient that were separated by 5 SNPs. In total, 15 of 22 (68%) MRSA-colonized
119 NICU patients, including all twins, and all cases of invasive disease occurred in clusters 1, 3, 4
120 and 5.

121 Comparisons of NICU strains in clusters 1, 3, 4 and 5 with adult nosocomial MRSA
122 isolates seen at the hospital showed no clonal relationships between the populations, indicating
123 that the outbreak clusters seen in the NICU were genomically distinct. Further, the NICU
124 outbreak clusters did not include any of the 21,521 *S. aureus* isolate genomes deposited in
125 NCBI's Pathogen Isolates browser. To further assess nearest neighbor strains, whole-genome
126 MLST (wgMLST) of NICU and 19,670 isolates with assemblies (Figure 3, Supplemental File 1,
127 Supplemental File 2) confirmed that the NICU SNP clusters remained distinct even within
128 broader wgMLST groups.

129

130 **International MRSA genomic datasets enable rule-out of putative transmission events.**

131 Analyses of Patient 21's MRSA isolate showed an identical antibiogram, MLST, and *SCCmec*
132 type to isolates found in NICU cluster 4. However, incorporating the additional external strain

133 genomic datasets showed clear placement of this patient's isolate in a genomically distinct
134 cluster (Figure 3, Supplemental File 1).

135 A gain of the SCC*mec* type IVa (2B) is evident in the sub-clade of multi-locus sequence
136 type (MLST) 5 including this isolate. Eight of the nine other closely related SCC*mec* type IVa
137 (2B) strains were submitted by Mount Sinai Hospital in New York City, New York, and the 9th
138 by the University of Pittsburgh Medical Center in Pittsburg, Pennsylvania. Thus, while Patient
139 21's isolate and cluster 4's isolates appear to belong to the same regional clade, this patient strain
140 was ruled out as belonging to NICU cluster 4.

141

142

143 **Genomic identification of internationally-occurring MRSA in NICU patients**

144 Cluster 5 isolates, from patients 15 and 16 in twin set 3, included two nasal-perirectal swab
145 isolates from patient 15 and one epidermal abscess isolate from patient 16. The three isolates
146 belonged to MLST 1535 (Figure 4A). The twin's parents had recently immigrated from the
147 Middle East where this MLST is more prevalent⁴⁰. While ST1535 appears to be rare in the US,
148 one ST1535 genome from a pediatric cystic fibrosis patient in Cincinnati (GCA_002124405.1)
149 was included in analyses⁴¹. The MLST 1535 genomes share the presence of three antibiotic
150 resistance genes; *aac(6')-Ie/aph(2'')*-1a, *fusC*, and *mecA* (Figure 4B). High-resolution closed
151 genomes of the cluster 5 isolates revealed an SCC*mec* region containing these resistance genes
152 flanked by multiple mobilizing insertion sequences and novel repetitive elements that had not
153 been resolvable in the draft-level genomic data (Figure 4C). The SSC*mec* contains *ccrC* and
154 *ccrAA* with *mecA* allele C2, *fusC* in the J3 region and an IS256 flanked integron in the J1 region
155 that contains *aac(6')-Ie-aph(2'')*-Ia³⁸. Mobilizing IS431*mec* and IS256 were each found multiple

156 times in this region, as well as a set of three direct repeats sharing a 13 base long core sequence
157 not found elsewhere in the chromosome. The cluster 5 isolates demonstrated fusidic acid
158 resistance at 8 µg/ml, oxacillin resistance at 2 or 0.5 µg/ml, and gentamicin resistance at ≥16
159 µg/ml (Supplemental File 1).

160

161 **Discussion**

162 Preterm neonates are highly susceptible to colonization with pathogens, including MRSA, per
163 their lack of colonization with a complex microbiota, immature immune system and frequent co-
164 morbidities associated with preterm birth. Genomic analyses of surveillance and diagnostic
165 MRSA cultures from NICU patients identified multiple outbreak clusters and transmission
166 events. Many of these transmissions were cryptic events that fell below thresholds of detection
167 using standard phenotypic assessments with clinical microbiologic data.

168 Four MRSA outbreaks associated with patient-to-patient transmission, clusters 1, 3, 4 and
169 5, occurred during the period of prospective genomic surveillance (Figures 1 and 2). These
170 clusters accounted for isolates in 15 of 22 MRSA-colonized patients (68%) and all invasive
171 MRSA infections. Genomic analyses provided high resolution information to resolve clusters
172 and to also exclude putative transmission events in cases where strains co-occurring in time had
173 identical microbiologic phenotypes. Geomic analyses resolved co-occurring MRSA strains
174 among patients into three distinct clusters 1, 3, and 4. In addition, the sequence type 5 (ST5)
175 isolate seen in surveillance cultures from patient 21 showed identical microbiologic phenotypes
176 to strains in cluster 4 but a genomically distinct SNP profile allowing it to be ruled out as part of
177 a transmission chain (Supplemental File 1). The higher resolution analyses enabling this
178 distinction used 21,520 publicly-available genomic datasets from NCBI to resolve sub-clusters
179 among ST5 strains (Figure 3). The external MRSA genomic data greatly improved the
180 phylogenetic resolution of locally obtained strains and was thus able to rule out strain relatedness
181 and further transmission events. Incorporation of large genomic datasets from geographically
182 diverse regions enhances the accuracy of local genomic investigations of nosocomial
183 outbreaks⁴².

184 We identified two potentially endemic strains in the NICU. Clusters 1 and 3 occurred
185 over discontinuous time periods (Figure 1). Cluster 1 involved a NICU strain seen prior to
186 initiating prospective genomic surveillance, with only 9 SNPs difference between the point of
187 first detection of the cluster and its recurrence 259 days later (Figure 2). This finding concurs
188 with prior literature showing that persistent strain carriage or presence on surfaces may
189 accumulate low levels of SNP heterogeneity over time⁴²⁻⁴⁵. Similarly, cluster 3 isolates showed
190 no consistent SNP differences while also appearing in three discontinuous time periods separated
191 by 56 days and 49 days. Both clusters raise the possibility of sustained reservoirs that can seed
192 intermittent outbreaks.

193 Two of four patients with isolates in cluster 4 developed invasive disease. Patient 12 had
194 positive MRSA surveillance cultures 3 weeks in advance of infection while patient 14's infection
195 was detected on the same day as positive surveillance cultures (Figure 2C). In all cases,
196 longitudinal MRSA isolates from individual patients and among twin sets were clonally related.
197 Surveillance cultures therefore have predictive value for patients at higher risk for infections.
198 However, patients 11, 15 and 16 were also co-colonized by methicillin sensitive *S. aureus*,
199 demonstrating that colonization by multiple *S. aureus* strains can occur in NICU patients and can
200 shift over time.

201 The use of extensive and geographically diverse datasets improved NICU-focused
202 assessments of strain reservoirs and potential transmission events. The ST1535 isolate seen in
203 patients 15 and 16 from twin set 3 (Figure 4, Supplemental Table 1) occurred primarily in
204 locations from the Middle East, including clinical and environmental reservoirs⁴⁶⁻⁴⁸. While the
205 parents and visiting family had recent international travel from the Middle East, domestic
206 sources cannot be ruled out, as evidenced by a similar strain found in Cincinnati⁴¹. Recent

207 observations of confirmed and suspected MDR SCCs encoding *mecA* with other antimicrobial
208 resistance genes, including several with *fusC*, raises concerns globally for Staphylococcal
209 infections requiring complicated antimicrobial therapy⁴⁹⁻⁵¹. *fusC* fusidic acid resistance has been
210 seen in non-*mec* SCC and *SCCmec* elements^{49,52,53}. The *SCCmec* sequence from the closed
211 isolate genomes were highly similar to draft *SCCmec* sequences reported by Senok, et al.⁴⁰.
212 Closing of these isolate genomes identified clear *IS431mec* and *IS256* sequences and additional
213 direct repeats within the *SCCmec* that may facilitate accrual of additional resistance genes via
214 further transposition or inter-recombination events with homologous mobile elements⁵⁴.

215 All MRSA-colonized neonates had been admitted to the NICU for prematurity (Figure 2,
216 Figure S1). Prematurity and associated long lengths of stay in the NICU elevate risks for MRSA
217 colonization and infection^{4,5}. Importantly, NICU-specific outbreak strains were found in 68% of
218 MRSA-colonized patients (15 of 22 neonates). Prospective genomic surveillance thus offers a
219 tool to rapidly identify related strains, aid the discovery of risk factors for transmission, define
220 potential environmental or staff reservoirs, and thus inform interventions to halt further spread.

221 We demonstrate the application of longitudinal genomic surveillance in a NICU setting
222 using international repositories of deposited strains to improve outbreak detection, including
223 cryptic transmission events, and potential pathogen reservoirs. The addition of robust and
224 genomically diverse information improves the resolution of analyses and better enables critical
225 rule-out determinations. Analyses also provide global context for uncommon strains that may be
226 seen in an increasingly connected world.

227

228 **Methods**

229 ***IRB study protocol and data collection***

230 The study was conducted under IRB protocol 2011-P-002883 (PI: Bry, Partners Healthcare). The
231 Crimson LIMS was used for sample retrieval, and patient data and microbiological test results
232 were retrieved using the Partners Research Patient Data Registry^{55,56}. Data used for analyses
233 were deidentified.

234

235 ***Study design and clinical interventions***

236 From days 1-341 MRSA isolates flagged from prior clinical microbiologic testing or nasal-
237 perirectal swab screening were saved for phenotypic analyses of susceptibility profiles to
238 evaluate suspicious outbreak clusters. Findings triggered a prospective genomic surveillance
239 period from days 342 to 558 during which MRSA isolates from all nasal-perirectal swab cultures
240 and diagnostic cultures were sequenced, in addition to the previously collected strains. Medical
241 records for NICU patients during the surveillance period were evaluated for clinical diagnoses,
242 reasons for NICU admission, and additional culture-based analyses. In the context of the clinical
243 genomic surveillance program, only patient surveillance and diagnostic strains were evaluated.
244 Non-clinical samples were not collected from patient family members or NICU personnel.
245 Neonates colonized or infected with MRSA were placed in single rooms and managed with
246 Contact Precautions.

247

248 ***Sample collection***

249 BD BBL CultureSwabs (BD, San Jose, CA) were used for nasal-perirectal (NP) screening for *S.*
250 *aureus*. Swabs were cultured to colistin nalidixic acid (CNA) blood agar for 18-24 hours at 37°C.

251 *S. aureus* colonies were identified by colony morphology, Gram stain and positive catalase and
252 coagulase assays (Thermo). Diagnostic cultures with putative *S. aureus* colonies were evaluated
253 similarly. One MRSA isolate from a patient that tested positive on a single nasal-perirectal
254 screening swab was missed during the surveillance period and excluded from the study.
255 Collected isolates were preserved at -80° C in 2ml Cryovials (Corning, Corning, NY). In the
256 context of the clinical genomic surveillance program, and the IRB protocol under which it
257 operates, only patient surveillance and diagnostic strains were evaluated. Non-clinical samples
258 were not collected from patient family members or NICU personnel.

259

260 ***Antibiotic resistance testing***

261 *S. aureus* isolates were tested clinically for antibiotic resistance by VITEK 2 with Susceptibility
262 Card AST-GP78 (Biomérieux, Durham, NC). Microdilution testing for fusidic acid resistance
263 was done by broth microdilution according to CLSI guidelines⁵⁷. MRSA isolates were called by
264 resistance to ceftiofloxacin.

265

266 ***Genome sequencing***

267 All isolate genomes were sequenced using Illumina NextSeq as described (Illumina, San Diego,
268 CA)⁵⁶. Oxford nanopore sequencing (Oxford Nanopore, Cambridge, MA) and subsequent
269 assembly using a combination of nanopore and Illumina reads was performed as previously
270 described for MLST 1535 isolates⁵⁸. Datasets were deposited under NCBI Bioproject
271 PRJNA278886.

272

273 ***Bioinformatic analyses***

274 Patient data was visualized and analyzed using Python with the packages Matplotlib and
275 SciPy^{59,60}. Isolate genome sequencing reads were uploaded to the NCBI Sequence Read Archive
276 for inclusion in the Pathogen Detection program (Supplemental table 1), which includes SNP
277 clustering, virulence gene detection, antimicrobial resistance gene detection, and isolate
278 metadata⁶¹. Phylogenetic results were visualized using the Pathogen Detection Isolates Browser.

279 Whole-genome MLST was performed using the program tblastn and coding sequences
280 from RefSeq genome NC_007795.1^{62,63}. The threshold for inclusion was an e-value ≤ 0.001 and a
281 length between 0.5x and 1.5x the reference sequence coding length. Gene matches were retained
282 if there was at most one high quality hit in each genome for all genomes in a downsampled set of
283 all *S. aureus* isolate genomes available in the NCBI Pathogen Detection program, limited to 5
284 from each SNP cluster. Gene sequences were only kept if they matched the reference sequence
285 length to allow for efficient SNP calculation across thousands of genomes. Genes were excluded
286 if present in <90% of genomes, resulting in a database of 2021 genes. Genomes with <90% of
287 these genes represented within the criteria above were excluded, resulting in a final database
288 representing 15,477 genomes. From this set of genomic information, allelic differences were
289 calculated to determine the closest set of 25 genomes to NICU MRSA isolates, keeping all tied
290 for 25th closest. SNP matrices were then created using the gene encoding sequences among these
291 $\cong 25$ genomes plus the NICU MRSA isolates. Phylogenies from these matrices were calculated
292 with RAxML 8.2.11 using 1000 bootstraps and the GTR substitution matrix⁶⁴.

293 Each strain's MLST was calculated using the reference sequences and definitions from
294 pubMLST.org⁶⁵. SCCmec types were determined using the tools and guidelines from SCCmec
295 Finder⁶⁶. Virulence gene profiles and antibiotic resistance gene profiles were taken from the
296 analysis at the NCBI Pathogen Detection Program⁶¹.

297 Annotation of the MLST 1535 *SCCmec* region was performed as follows. First, the
298 genome was annotated by the PATRIC RASTtk-enabled Genome Annotation Service⁶⁷. Open
299 reading frames within this sequence were confirmed or identified using blastp searches against
300 the non-redundant protein sequences database at NCBI⁶³. Cassette chromosome recombinase
301 (*ccr*) gene identity was investigated using blastp and representative alleles using hits above 80%
302 identity and length^{40,68}.

303 **Acknowledgements:** The authors wish to thank Mary Delaney for clinical microbiologic
304 support, the Wadsworth Center Advanced Genomic Technologies Center (AGTC) for
305 sequencing, and Beth Flanigan, MD for helpful review of results. The work of JW was supported
306 by the Intramural Research Program of the National Library of Medicine, National Institutes of
307 Health, and the work of JC by the BWH Clinical Microbiology Fellowship. Studies were
308 supported by P30 DK034854 (Bry). Sequencing at the AGTC was supported by FDA
309 Cooperative Agreements 5U18FD006229 and 1U18FD006763 (Wolfgang).

310 References

- 311 1 Sievert, D. M. *et al.* Antimicrobial-resistant pathogens associated with healthcare-
312 associated infections: summary of data reported to the National Healthcare Safety
313 Network at the Centers for Disease Control and Prevention, 2009-2010. *Infection Control
314 and Hospital Epidemiology* **34**, 1-14, doi:10.1086/668770 (2013).
- 315 2 Tong, S. Y. C., Davis, J. S., Eichenberger, E., Holland, T. L. & Fowler, V. G. Staphylococcus
316 aureus infections: epidemiology, pathophysiology, clinical manifestations, and
317 management. *Clinical Microbiology Reviews* **28**, 603-661, doi:10.1128/CMR.00134-14
318 (2015).
- 319 3 Nelson, M. U. & Gallagher, P. G. Methicillin-resistant Staphylococcus aureus in the
320 neonatal intensive care unit. *Seminars in Perinatology* **36**, 424-430,
321 doi:10.1053/j.semperi.2012.06.004 (2012).
- 322 4 Huang, Y.-C., Chou, Y.-H., Su, L.-H., Lien, R.-I. & Lin, T.-Y. Methicillin-resistant
323 Staphylococcus aureus colonization and its association with infection among infants
324 hospitalized in neonatal intensive care units. *Pediatrics* **118**, 469-474,
325 doi:10.1542/peds.2006-0254 (2006).
- 326 5 Zervou, F. N., Zacharioudakis, I. M., Ziakas, P. D. & Mylonakis, E. MRSA colonization and
327 risk of infection in the neonatal and pediatric ICU: a meta-analysis. *Pediatrics* **133**,
328 e1015-1023, doi:10.1542/peds.2013-3413 (2014).
- 329 6 Gerber, S. I. *et al.* Management of outbreaks of methicillin-resistant Staphylococcus
330 aureus infection in the neonatal intensive care unit: a consensus statement. *Infection
331 Control and Hospital Epidemiology* **27**, 139-145, doi:10.1086/501216 (2006).
- 332 7 Milstone, A. M. *et al.* Effect of treating parents colonized with Staphylococcus aureus on
333 transmission to neonates in the intensive care unit: a randomized clinical trial. *JAMA*
334 **323**, 319-328, doi:10.1001/jama.2019.20785 (2020).
- 335 8 Gastmeier, P. *et al.* Outbreaks in neonatal intensive care units - they are not like others.
336 *American Journal of Infection Control* **35**, 172-176, doi:10.1016/j.ajic.2006.07.007
337 (2007).
- 338 9 Gastmeier, P., Sohr, D., Geffers, C., Behnke, M. & Rüdén, H. Risk factors for death due to
339 nosocomial infection in intensive care unit patients: findings from the Krankenhaus
340 Infektions Surveillance System. *Infection Control and Hospital Epidemiology* **28**, 466-472,
341 doi:10.1086/510810 (2007).
- 342 10 Conceição, T. *et al.* Staphylococcus aureus reservoirs and transmission routes in a
343 Portuguese neonatal intensive care unit: a 30-month surveillance study. *Microbial Drug
344 Resistance (Larchmont, N.Y.)* **18**, 116-124, doi:10.1089/mdr.2011.0182 (2012).
- 345 11 Dong, Y., Glaser, K. & Speer, C. P. New threats from an old foe: methicillin-resistant
346 Staphylococcus aureus infections in neonates. *Neonatology* **114**, 127-134,
347 doi:10.1159/000488582 (2018).
- 348 12 Sakaki, H., Nishioka, M., Kanda, K. & Takahashi, Y. An investigation of the risk factors for
349 infection with methicillin-resistant Staphylococcus aureus among patients in a neonatal
350 intensive care unit. *American Journal of Infection Control* **37**, 580-586,
351 doi:10.1016/j.ajic.2009.02.008 (2009).

- 352 13 Washam, M., Woltmann, J., Haberman, B., Haslam, D. & Staat, M. A. Risk factors for
353 methicillin-resistant *Staphylococcus aureus* colonization in the neonatal intensive care
354 unit: a systematic review and meta-analysis. *American Journal of Infection Control* **45**,
355 1388-1393, doi:10.1016/j.ajic.2017.06.021 (2017).
- 356 14 Raboud, J. *et al.* Modeling transmission of methicillin-resistant *Staphylococcus aureus*
357 among patients admitted to a hospital. *Infection Control and Hospital Epidemiology* **26**,
358 607-615, doi:10.1086/502589 (2005).
- 359 15 Laing, I. A., Gibb, A. P. & McCallum, A. Controlling an outbreak of MRSA in the neonatal
360 unit: a steep learning curve. *Archives of Disease in Childhood. Fetal and Neonatal Edition*
361 **94**, F307-310, doi:10.1136/adc.2008.151290 (2009).
- 362 16 Geva, A. *et al.* Spread of methicillin-resistant *Staphylococcus aureus* in a large tertiary
363 NICU: network analysis. *Pediatrics* **128**, e1173-1180, doi:10.1542/peds.2010-2562
364 (2011).
- 365 17 Price, J. R. *et al.* Whole-genome sequencing shows that patient-to-patient transmission
366 rarely accounts for acquisition of *Staphylococcus aureus* in an intensive care unit.
367 *Clinical Infectious Diseases: An Official Publication of the Infectious Diseases Society of*
368 *America* **58**, 609-618, doi:10.1093/cid/cit807 (2014).
- 369 18 Bertin, M. L. *et al.* Outbreak of methicillin-resistant *Staphylococcus aureus* colonization
370 and infection in a neonatal intensive care unit epidemiologically linked to a healthcare
371 worker with chronic otitis. *Infection Control and Hospital Epidemiology* **27**, 581-585,
372 doi:10.1086/504933 (2006).
- 373 19 Méan, M. *et al.* A neonatal specialist with recurrent methicillin-resistant *Staphylococcus*
374 *aureus* (MRSA) carriage implicated in the transmission of MRSA to newborns. *Infection*
375 *Control and Hospital Epidemiology* **28**, 625-628, doi:10.1086/513616 (2007).
- 376 20 Price, J. R. *et al.* Transmission of *Staphylococcus aureus* between health-care workers,
377 the environment, and patients in an intensive care unit: a longitudinal cohort study
378 based on whole-genome sequencing. *The Lancet. Infectious Diseases* **17**, 207-214,
379 doi:10.1016/S1473-3099(16)30413-3 (2017).
- 380 21 Morel, A.-S. *et al.* Nosocomial transmission of methicillin-resistant *Staphylococcus*
381 *aureus* from a mother to her preterm quadruplet infants. *American Journal of Infection*
382 *Control* **30**, 170-173, doi:10.1067/mic.2002.119819 (2002).
- 383 22 Al-Tawfiq, J. A. Father-to-infant transmission of community-acquired methicillin-
384 resistant *Staphylococcus aureus* in a neonatal intensive care unit. *Infection Control and*
385 *Hospital Epidemiology* **27**, 636-637, doi:10.1086/505097 (2006).
- 386 23 Cheng, V. C. C. *et al.* Whole-genome sequencing data-based modeling for the
387 investigation of an outbreak of community-associated methicillin-resistant
388 *Staphylococcus aureus* in a neonatal intensive care unit in Hong Kong. *European Journal*
389 *of Clinical Microbiology & Infectious Diseases: Official Publication of the European*
390 *Society of Clinical Microbiology* **38**, 563-573, doi:10.1007/s10096-018-03458-y (2019).
- 391 24 Albrich, W. C. & Harbarth, S. Health-care workers: source, vector, or victim of MRSA?
392 *The Lancet. Infectious Diseases* **8**, 289-301, doi:10.1016/S1473-3099(08)70097-5 (2008).
- 393 25 Lessa, F. C. *et al.* Trends in incidence of late-onset methicillin-resistant *Staphylococcus*
394 *aureus* infection in neonatal intensive care units: data from the National Nosocomial

- 395 Infections Surveillance System, 1995-2004. *The Pediatric Infectious Disease Journal* **28**,
396 577-581, doi:10.1097/INF.0b013e31819988bf (2009).
- 397 26 Köser, C. U. *et al.* Rapid whole-genome sequencing for investigation of a neonatal MRSA
398 outbreak. *The New England Journal of Medicine* **366**, 2267-2275,
399 doi:10.1056/NEJMoa1109910 (2012).
- 400 27 Price, J. R., Didelot, X., Crook, D. W., Llewelyn, M. J. & Paul, J. Whole genome sequencing
401 in the prevention and control of *Staphylococcus aureus* infection. *The Journal of*
402 *Hospital Infection* **83**, 14-21, doi:10.1016/j.jhin.2012.10.003 (2013).
- 403 28 Azarian, T. *et al.* Whole-genome sequencing for outbreak investigations of methicillin-
404 resistant *Staphylococcus aureus* in the neonatal intensive care unit: time for routine
405 practice? *Infection Control and Hospital Epidemiology* **36**, 777-785,
406 doi:10.1017/ice.2015.73 (2015).
- 407 29 Roisin, S. *et al.* Pan-genome multilocus sequence typing and outbreak-specific
408 reference-based single nucleotide polymorphism analysis to resolve two concurrent
409 *Staphylococcus aureus* outbreaks in neonatal services. *Clinical Microbiology and*
410 *Infection: The Official Publication of the European Society of Clinical Microbiology and*
411 *Infectious Diseases* **22**, 520-526, doi:10.1016/j.cmi.2016.01.024 (2016).
- 412 30 Lakhundi, S. & Zhang, K. Methicillin-resistant *Staphylococcus aureus*: molecular
413 characterization, evolution, and epidemiology. *Clinical Microbiology Reviews* **31**,
414 doi:10.1128/CMR.00020-18 (2018).
- 415 31 SenGupta, D. J. *et al.* Whole-genome sequencing for high-resolution investigation of
416 methicillin-resistant *Staphylococcus aureus* epidemiology and genome plasticity. *Journal*
417 *of Clinical Microbiology* **52**, 2787-2796, doi:10.1128/JCM.00759-14 (2014).
- 418 32 Harris, S. R. *et al.* Whole-genome sequencing for analysis of an outbreak of methicillin-
419 resistant *Staphylococcus aureus*: a descriptive study. *The Lancet. Infectious Diseases* **13**,
420 130-136, doi:10.1016/S1473-3099(12)70268-2 (2013).
- 421 33 Layer, F. *et al.* Molecular typing of toxic shock syndrome toxin-1- and Enterotoxin A-
422 producing methicillin-sensitive *Staphylococcus aureus* isolates from an outbreak in a
423 neonatal intensive care unit. *International journal of medical microbiology: IJMM* **305**,
424 790-798, doi:10.1016/j.ijmm.2015.08.033 (2015).
- 425 34 Earls, M. R. *et al.* Intra-hospital, inter-hospital and intercontinental spread of ST78 MRSA
426 from two neonatal intensive care unit outbreaks established using whole-genome
427 sequencing. *Frontiers in Microbiology* **9**, 1485, doi:10.3389/fmicb.2018.01485 (2018).
- 428 35 Sullivan, M. J. *et al.* A complete genome screening program of clinical methicillin-
429 resistant *Staphylococcus aureus* isolates identifies the origin and progression of a
430 neonatal intensive care unit outbreak. *Journal of Clinical Microbiology* **57**,
431 doi:10.1128/JCM.01261-19 (2019).
- 432 36 Nübel, U. *et al.* MRSA transmission on a neonatal intensive care unit: epidemiological
433 and genome-based phylogenetic analyses. *PloS One* **8**, e54898,
434 doi:10.1371/journal.pone.0054898 (2013).
- 435 37 Prospero, M. *et al.* Molecular epidemiology of community-associated methicillin-
436 resistant *Staphylococcus aureus* in the genomic era: a cross-sectional study. *Scientific*
437 *Reports* **3**, 1902, doi:10.1038/srep01902 (2013).

- 438 38 Classification of staphylococcal cassette chromosome mec (SCCmec): guidelines for
439 reporting novel SCCmec elements. *Antimicrobial Agents and Chemotherapy* **53**, 4961-
440 4967, doi:10.1128/AAC.00579-09 (2009).
- 441 39 Lin, Y.-T. *et al.* A novel staphylococcal cassette chromosomal element, SCCfusC, carrying
442 fusC and speG in fusidic acid-resistant methicillin-resistant *Staphylococcus aureus*.
443 *Antimicrobial Agents and Chemotherapy* **58**, 1224-1227, doi:10.1128/AAC.01772-13
444 (2014).
- 445 40 Senok, A. C. *et al.* Investigating a rare methicillin-resistant *Staphylococcus aureus* strain:
446 first description of genome sequencing and molecular characterization of CC15-MRSA.
447 *Infection and Drug Resistance* **10**, 307-315, doi:10.2147/IDR.S145394 (2017).
- 448 41 Ankrum, A. & Hall, B. G. Population dynamics of *Staphylococcus aureus* in cystic fibrosis
449 patients to determine transmission events by use of whole-genome sequencing. *Journal*
450 *of Clinical Microbiology* **55**, 2143-2152, doi:10.1128/JCM.00164-17 (2017).
- 451 42 Worley, J. *et al.* Genomic determination of relative risks for *Clostridioides difficile*
452 infection from asymptomatic carriage in ICU patients. *Clinical Infectious Diseases: An*
453 *Official Publication of the Infectious Diseases Society of America*,
454 doi:10.1093/cid/ciaa894 (2020).
- 455 43 Orsi, R. H. *et al.* Short-term genome evolution of *Listeria monocytogenes* in a non-
456 controlled environment. *BMC Genomics* **9**, 539, doi:10.1186/1471-2164-9-539 (2008).
- 457 44 Narui, K. *et al.* Change in environmental bacterial flora in a new hospital building. *The*
458 *Journal of Hospital Infection* **73**, 24-33, doi:10.1016/j.jhin.2009.05.019 (2009).
- 459 45 Stasiewicz, M. J., Oliver, H. F., Wiedmann, M. & den Bakker, H. C. Whole-genome
460 sequencing allows for improved identification of persistent *Listeria monocytogenes* in
461 food-associated environments. *Applied and Environmental Microbiology* **81**, 6024-6037,
462 doi:10.1128/AEM.01049-15 (2015).
- 463 46 Williamson, D. A. *et al.* High usage of topical fusidic acid and rapid clonal expansion of
464 fusidic acid-resistant *Staphylococcus aureus*: a cautionary tale. *Clinical Infectious*
465 *Diseases: An Official Publication of the Infectious Diseases Society of America* **59**, 1451-
466 1454, doi:10.1093/cid/ciu658 (2014).
- 467 47 Cabrera, R. *et al.* Molecular characterization of methicillin-resistant *Staphylococcus*
468 *aureus* clinical strains from the endotracheal tubes of patients with nosocomial
469 pneumonia. *Antimicrobial Resistance and Infection Control* **9**, 43, doi:10.1186/s13756-
470 020-0679-z (2020).
- 471 48 Senok, A. *et al.* Genotyping of methicillin resistant *Staphylococcus aureus* from the
472 United Arab Emirates. *Scientific Reports* **10**, 18551, doi:10.1038/s41598-020-75565-w
473 (2020).
- 474 49 Ellington, M. J. *et al.* Emergent and evolving antimicrobial resistance cassettes in
475 community-associated fusidic acid and methicillin-resistant *Staphylococcus aureus*.
476 *International Journal of Antimicrobial Agents* **45**, 477-484,
477 doi:10.1016/j.ijantimicag.2015.01.009 (2015).
- 478 50 Baines, S. L. *et al.* Rapid emergence and evolution of *Staphylococcus aureus* clones
479 harboring fusC-containing staphylococcal cassette chromosome elements. *Antimicrobial*
480 *Agents and Chemotherapy* **60**, 2359-2365, doi:10.1128/AAC.03020-15 (2016).

- 481 51 Senok, A. *et al.* Characterisation of a novel SCCmec VI element harbouring fusC in an
482 emerging *Staphylococcus aureus* strain from the Arabian Gulf region. *PLoS ONE* **14**,
483 doi:10.1371/journal.pone.0223985 (2019).
- 484 52 Monecke, S. *et al.* Characterisation of MRSA strains isolated from patients in a hospital
485 in Riyadh, Kingdom of Saudi Arabia. *BMC Microbiology* **12**, 146, doi:10.1186/1471-2180-
486 12-146 (2012).
- 487 53 Udo, E. E. *et al.* Emergence of methicillin-resistant *Staphylococcus aureus* belonging to
488 clonal complex 15 (CC15-MRSA) in Kuwait hospitals. *Infection and Drug Resistance* **13**,
489 617-626, doi:10.2147/IDR.S237319 (2020).
- 490 54 Larsen, J., Andersen, P. S., Winstel, V. & Peschel, A. *Staphylococcus aureus* CC395
491 harbours a novel composite staphylococcal cassette chromosome mec element. *The*
492 *Journal of Antimicrobial Chemotherapy* **72**, 1002-1005, doi:10.1093/jac/dkw544 (2017).
- 493 55 Murphy, S. *et al.* Instrumenting the health care enterprise for discovery research in the
494 genomic era. *Genome Research* **19**, 1675-1681, doi:10.1101/gr.094615.109 (2009).
- 495 56 Nudel, K. *et al.* Genomics of *Corynebacterium striatum*, an emerging multi-drug
496 resistant pathogen of immunocompromised patients. *Clinical microbiology and infection*
497 *: the official publication of the European Society of Clinical Microbiology and Infectious*
498 *Diseases* **24**, 1016.e1017-1016.e1013, doi:10.1016/j.cmi.2017.12.024 (2018).
- 499 57 CLSI. *Methods for dilution antimicrobial susceptibility tests for bacteria that grow*
500 *aerobically*. 11 edn, Vol. M07 (Clinical and Laboratory Standards Institute, 2018).
- 501 58 Gonzalez-Escalona, N. & Sharma, S. K. Closing *Clostridium botulinum* group I genomes
502 using a combination of short- and long-reads. *Frontiers in Microbiology* **11**,
503 doi:10.3389/fmicb.2020.00239 (2020).
- 504 59 Hunter, J. D. Matplotlib: a 2D graphics environment. *Computing in Science & Engineering*
505 **9**, 90-95, doi:10.1109/MCSE.2007.55 (2007).
- 506 60 Virtanen, P. *et al.* SciPy 1.0 – fundamental algorithms for scientific computing in Python.
507 *Nature Methods* **17**, 261-272 (2020).
- 508 61 (National Library of Medicine (US), National Center for Biotechnology Information,
509 2016).
- 510 62 Gillaspay, A. F. *et al.* in *Gram-Positive Pathogens* 381-412 (John Wiley & Sons, Ltd,
511 2006).
- 512 63 Camacho, C. *et al.* BLAST+: architecture and applications. *BMC bioinformatics* **10**, 421,
513 doi:10.1186/1471-2105-10-421 (2009).
- 514 64 Stamatakis, A. RAxML version 8: a tool for phylogenetic analysis and post-analysis of
515 large phylogenies. *Bioinformatics (Oxford, England)* **30**, 1312-1313,
516 doi:10.1093/bioinformatics/btu033 (2014).
- 517 65 Jolley, K. A., Bray, J. E. & Maiden, M. C. J. Open-access bacterial population genomics:
518 BIGSdb software, the PubMLST.org website and their applications. *Wellcome Open*
519 *Research* **3**, doi:10.12688/wellcomeopenres.14826.1 (2018).
- 520 66 Kaya, H. *et al.* SCCmecFinder, a web-based tool for typing of staphylococcal cassette
521 chromosome mec in *Staphylococcus aureus* using whole-genome sequence data.
522 *mSphere* **3**, doi:10.1128/mSphere.00612-17 (2018).

- 523 67 Brettin, T. *et al.* RASTtk: A modular and extensible implementation of the RAST
524 algorithm for building custom annotation pipelines and annotating batches of genomes.
525 *Scientific Reports* **5**, doi:10.1038/srep08365 (2015).
- 526 68 Monecke, S. *et al.* Diversity of SCCmec elements in *Staphylococcus aureus* as observed
527 in South-Eastern Germany. *PloS One* **11**, e0162654, doi:10.1371/journal.pone.0162654
528 (2016).
529

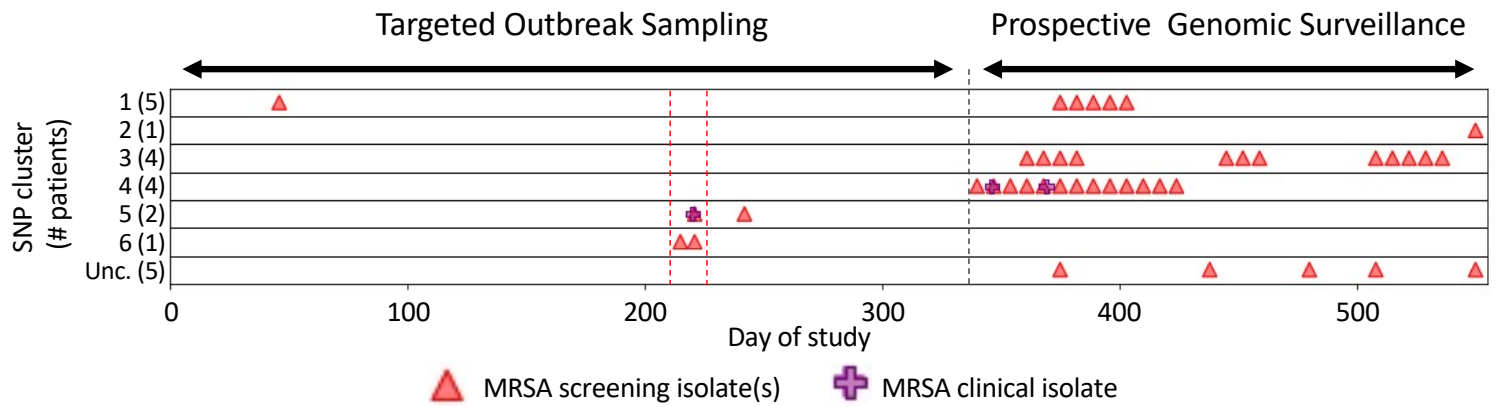


Figure 1. NICU outbreak cluster occurrence: X-axis indicates day during the analysis period. “Targeted Outbreak Sampling” refers to microbiologic-only assessments of NICU strains from days 0-341. Triangles and crosses indicate all occurring strains among patients that were also included in later genomic analyses. “Prospective surveillance” over days 342-558 indicates the period of prospective genomic analyses of new strains. Y-axis indicates NICU MRSA strains occurring in six NCBI, Pathogen Detection SNP clusters; numbers in parentheses indicate number of NICU strains from this study that occurred in the broader NCBI cluster, as follows: SNP Clusters (MLST, SCCmec type): **1**, PDS000067849.1 (8, IVa(2B)); **2**, PDS000069849.1 (72, IVa(2B)); **3**, PDS000069850.1 (5, II(2A)); **4**, PDS000069851.1 (5, IVa(2B)); **5**, PDS000069882.1 (1535, unclassified SCCmec); **6**, PDS000069883.1 (8, IVa(2B)); Unc. = unclustered isolates with unrelated MLST and SCCmec types. SNP cluster 2 (NCBI outbreak cluster PDS000069849.1) contained only one isolate from this study (Supplemental File 2). Red dashed lines show a suspected outbreak during the, and a black dashed line marks when the Prospective Surveillance began.

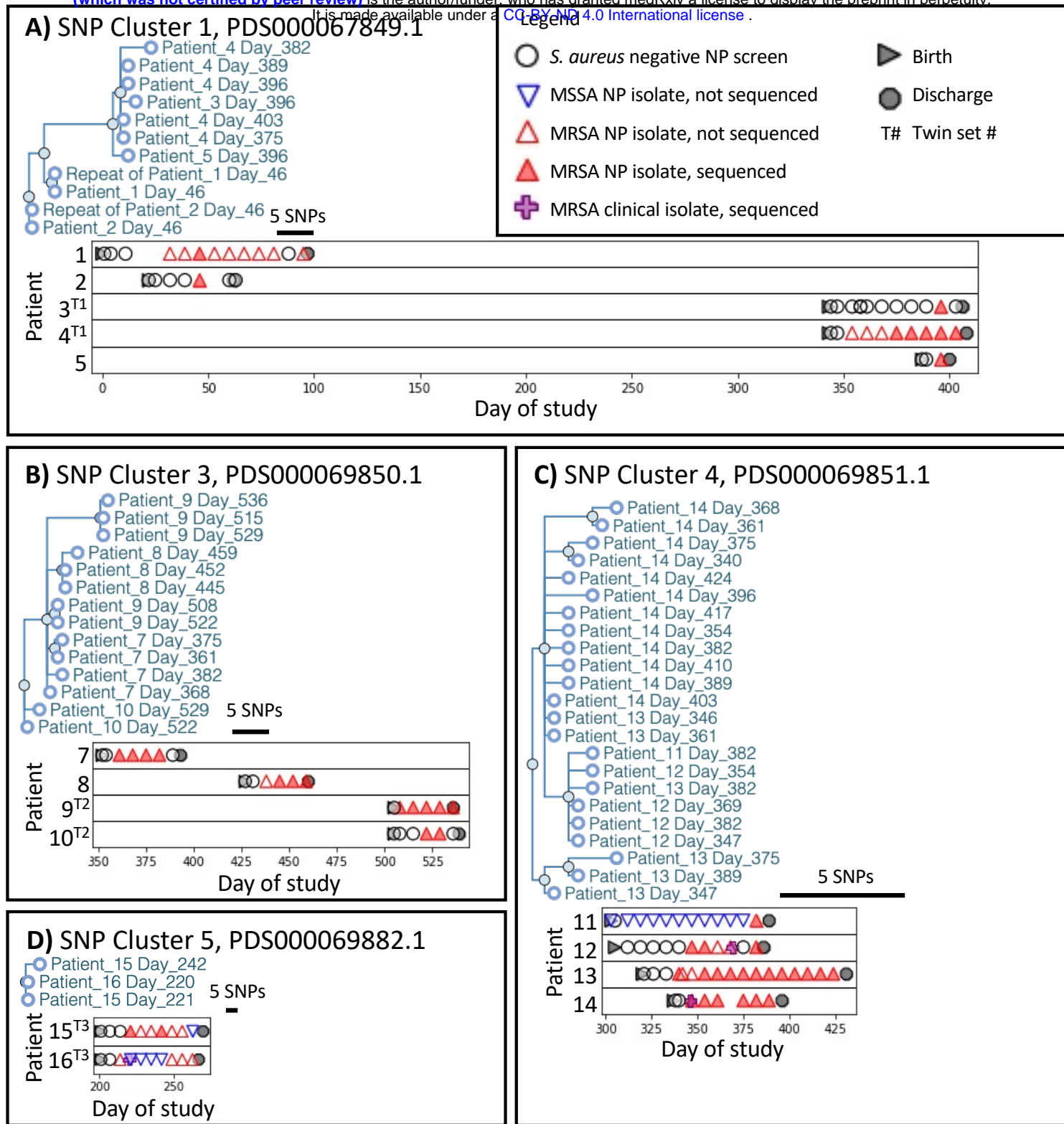


Figure 2. SNP cluster analyses reveal patient outbreaks and occurrence over time. Panels A-D show NICU MRSA strain phylogenetic trees from the NCBI Pathogen Genomes isolates browser with addition of the anonymized patientID and day of isolation. Graphs below each tree show the associated patients and strain occurrences relative to surveillance or diagnostic cultures. Though patient isolates fell within the broader NCBI SNP clusters, no other closely related strains from other institutions fell within these regions of the cluster SNP tree. Bar in each graph indicates 5 SNPs distance.

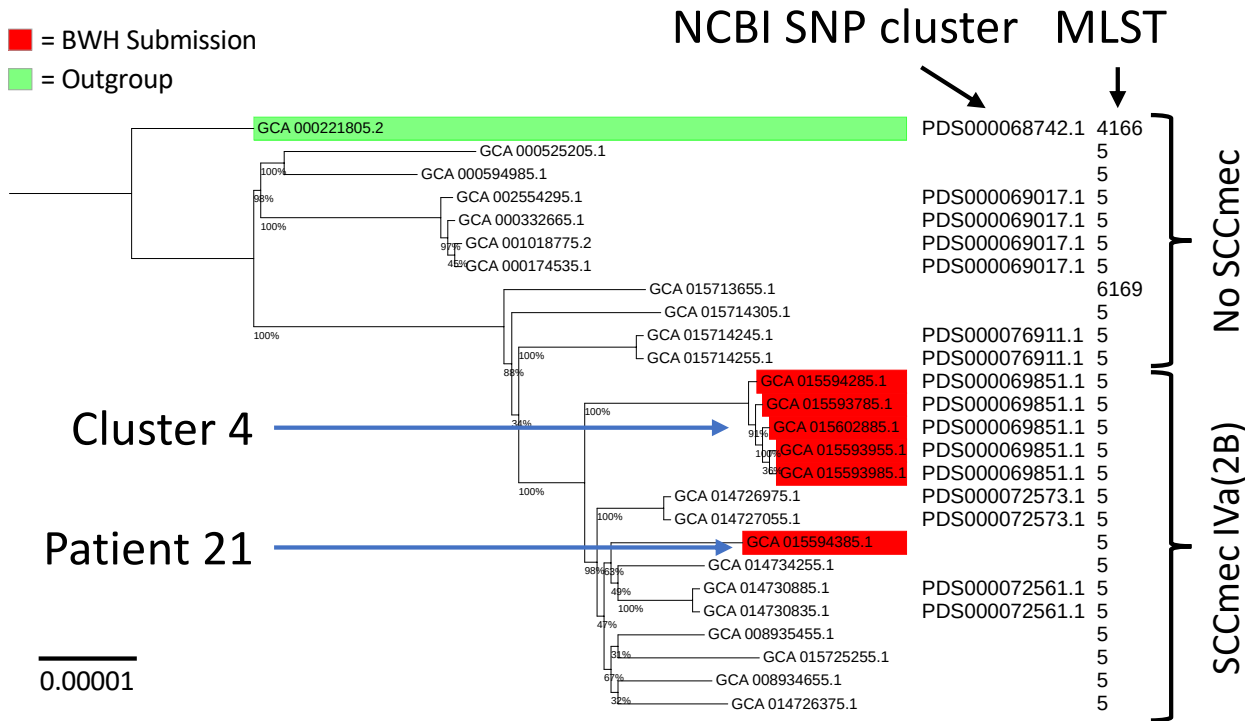
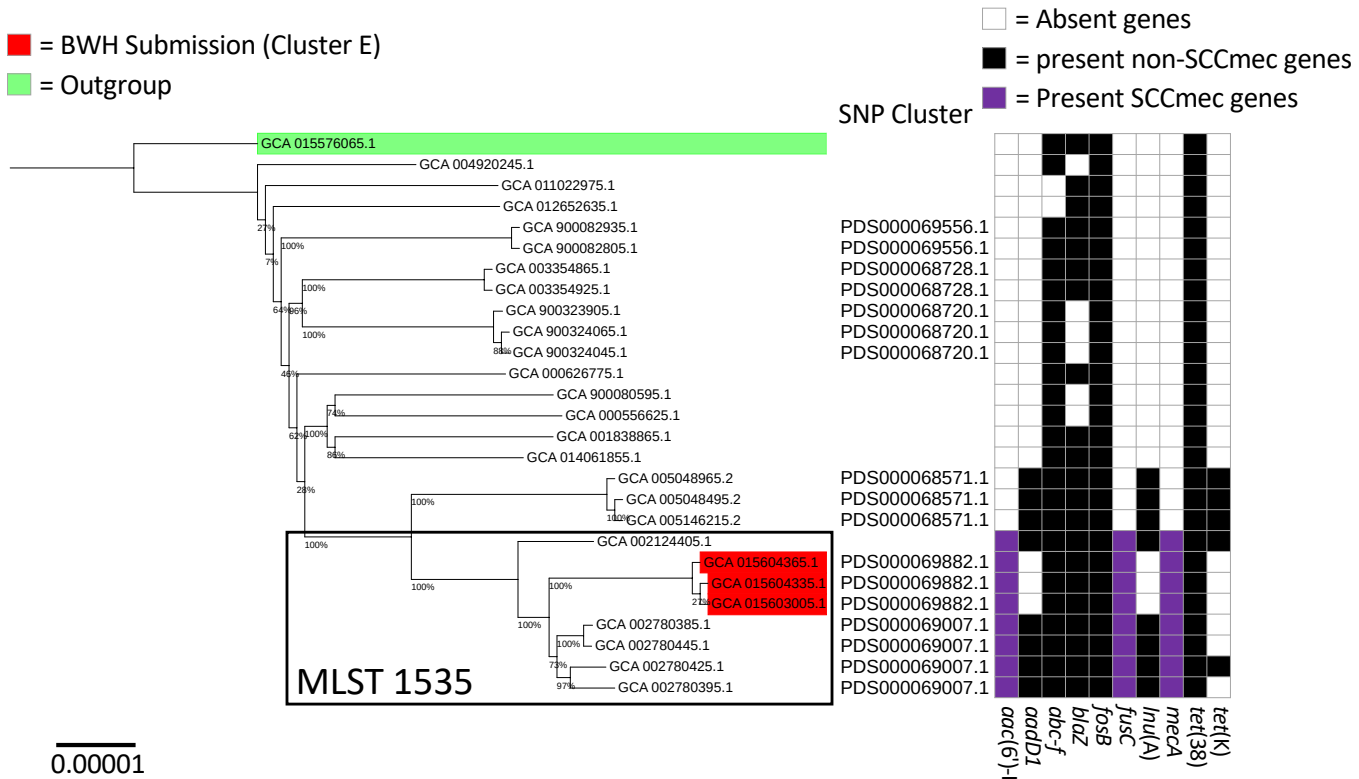


Figure 3. International MRSA strain datasets support effective rule out of local NICU suspected transmission events. Phylogenetic tree of NCBI ST5 SNP cluster isolates showing the NCBI SNP cluster, MLST and genomic SCCmec. The ST5 SNP clusters were downsampled to 5 representative isolates and wgMLST distances were used to define the 25 closest related strains in the NCBI Pathogen Detection program. SNPs within the wgMLST genes were used to calculate phylogenetic relationships (Supplemental File 2). The outgroup strain (green) was most distantly related to the BWH strains by wgMLST SNPs. Bootstrap values are shown at phylogenetic nodes. NICU patient strains are shown in red, including 5 representative isolates from the 4 NICU patients in Cluster 4, and the additional MRSA isolate from patient 21. Bootstrap support values show placement of patient 21's isolate in a separate sub-cluster distinct from Cluster 4.

A



C

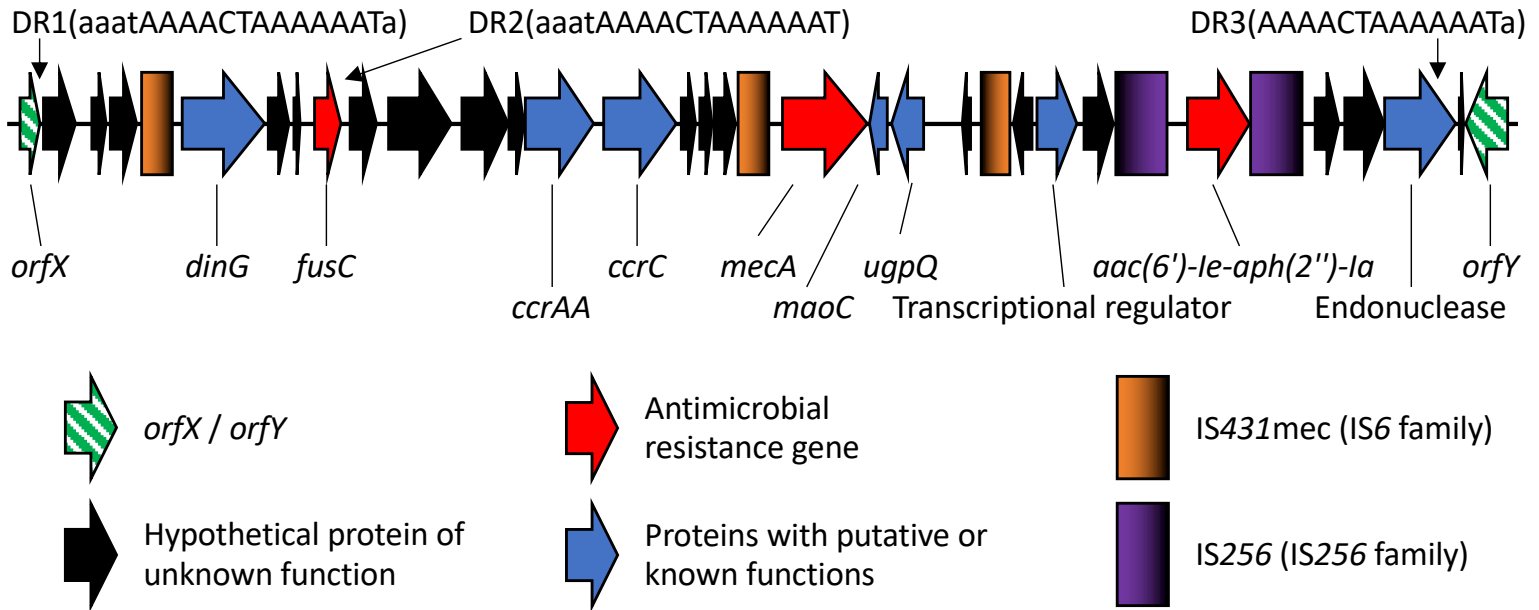


Figure 4. Genomic analyses identify NICU MLST 1535 strains with international clusters similar resistance gene profiles and variant SCCmecs. A. SNP based phylogeny of a wgMLST defined group of related strains reveals a clade of MLST 1535 strains from NICU Cluster 5 (red) that occurred in two patients. Strains were most similar to others identified in Saudi Arabia and one from Cincinnati. Strains outside of the MLST 1535 box are MLST 15. **B.** Antibiotic resistance gene profiles show the stepwise acquisition of resistance genes. The three NICU patient strains have lost *InuA* and *aac(6')-le/aph(2'')-la*. **C.** A high-resolution genomic map of the SCCmec region from NCBI cluster 5 isolates closed by long-read genome sequencing. A 13 base AAAC TAAAAAAT core sequence (DR1-DR3) with variable adjacent homologous sequence is directly repeated (DR) three times. This sequence does not appear elsewhere in the genome. Gradients in the IS element keys show directionality of the similar sequences.