

# Results from Canton Grisons of Switzerland Suggest Repetitive Testing Reduces SARS-CoV-2 Incidence (February-March 2021)

Hossein Gorji,<sup>1\*</sup> Ivan Lunati,<sup>1</sup> Fabian Rudolf,<sup>2</sup> Beatriz Vidondo,<sup>3</sup> Wolf-Dietrich Hardt,<sup>4</sup> Patrick Jenny,<sup>5</sup> Doortje Engel,<sup>6</sup> Jörg Schneider,<sup>6</sup> Marina Jamnicki,<sup>6</sup> Rudolf Leuthold,<sup>6</sup> Lorenz Risch,<sup>7,8</sup> Martin Risch,<sup>7</sup> Martin Bühler,<sup>6+</sup> Adrian Sommer,<sup>6+</sup> Alexa Caduff<sup>6+</sup>

<sup>1</sup>Laboratory of Multiscale Studies in Building Physics, Empa, Dübendorf, Switzerland

<sup>2</sup> D-BSSE ETH Zürich & Swiss Institute of Bioinformatics, Basel, Switzerland  
and Federal Office of Public Health FOPH, 3097 Bern, Switzerland

<sup>3</sup> Division of Communicable Diseases, Swiss Federal Office of Public Health, Bern, Switzerland  
and Institute of Social and Preventive Medicine, University of Bern, Bern, Switzerland

<sup>4</sup> Institute of Microbiology, D-BIOL, ETH Zürich, Switzerland

<sup>5</sup> Department of Mechanical and Process Engineering, ETH Zürich, Switzerland

<sup>6</sup> Department of Justice, Security and Health, Canton Grisons, Switzerland

<sup>7</sup>Clinical Microbiology, Labormedizinisches Zentrum Dr. Risch, 9470 Buchs SG, Switzerland

<sup>8</sup> Faculty of Medical Sciences, Private University of the Principality of Liechtenstein,  
9495 Triesen, Liechtenstein

+ these authors contributed equally.

\*To whom correspondence should be addressed; E-mail: [mohammadhossein.gorji@empa.ch](mailto:mohammadhossein.gorji@empa.ch).

**In February 2021, in response to emergence of more transmissible SARS-CoV-2 virus variants, the Canton Grisons launched a unique RNA mass testing program targeting the labour force in local businesses. Employees were offered weekly tests free of charge and on a voluntary basis. If tested positive, they were required to self-isolate for ten days and their contacts were subjected**

10 **to daily testing at work. Thereby, the quarantine of contact persons could**  
11 **be waved. Here, we evaluate the effects of the testing program on the tested**  
12 **cohorts. We examined 121'364 test results from 27'514 participants during**  
13 **February-March 2021. By distinguishing different cohorts of employees, we**  
14 **observe a noticeable decrease in the test positivity rate and a statistically sig-**  
15 **nificant reduction in the associated incidence rate over the considered period.**  
16 **The reduction in the latter ranges between 18%-50%. The variability is partly**  
17 **explained by different exposures to exogenous infection sources (e.g., contacts**  
18 **with visiting tourists or cross-border commuters). Our analysis provides the**  
19 **first empirical evidence that applying repetitive mass testing to a real popu-**  
20 **lation over an extended period of time can prevent spread of COVID-19 pan-**  
21 **demic. However, to overcome logistic, uptake, and adherence challenges it is**  
22 **important that the program is carefully designed and that disease incursion**  
23 **from the population outside of the program is considered and controlled.**

## 24 **Introduction**

### 25 **State of knowledge in mass testing**

26 Repetitive testing of people without noticeable symptoms has been proposed as a public health  
27 measure in response to COVID-19 pandemic. The concept relies on reducing the effective in-  
28 fectiousness period by isolating the positively tested individuals when they are presymptomatic  
29 or asymptomatic. Theoretical studies have demonstrated that repetitive mass testing helps con-  
30 tain the virus spread (1–4). They suggest that this strategy can contribute to control the local  
31 epidemics and might even provide an alternative to extreme interventions with higher social,  
32 psychological, or economic costs, such as blanket lockdowns. However, due to logistic chal-  
33 lenges and high costs, skepticism still remains against repetitive testing as its benefits haven't

34 been proven broadly yet (5, 6).

35

36 In the current pandemic, several types of SARS-CoV-2 tests with acceptable sensitivity for  
37 symptomatic cases have proven successful as diagnostic tools (7). For repetitive population  
38 screening, however, specificity, test-to-notice time, and sensitivity to asymptomatic virus car-  
39 riers are crucial, as they may hinder the effectivity of mass testing programs, if not chosen  
40 properly (5). In addition, the behavior of the population may jeopardize the positive effects  
41 of testing if, for instance, participants do not correctly comply with instructions (i.e. not con-  
42 sistently isolating if tested positive) (5, 6). Finally, the success of mass testing depends on the  
43 possibility to cover a sufficiently large fraction of the population and their contacts. So far, no  
44 empirical study has evaluated the benefits of mass testing when applied to a real population over  
45 an extended period of time. There is still lack of field studies of sufficient coverage demonstrat-  
46 ing that logistic, uptake and adherence challenges can be overcome.

47

48 To date, single, not weekly repetitive, population-based mass testing has been carried out and  
49 documented in countries such as the UK, China, South Korea, Austria, Luxembourg, and Slo-  
50 vakia, that have mostly used rapid antigen tests. In Slovakia, a few rounds of population-wide  
51 mass testing were estimated to yield a 70% decline of infection prevalence (8, 9). Pilot mass  
52 testing based on Lateral Flow Devices (LFDs) has been conducted in Liverpool, where lower  
53 uptake compared to Slovakia's was found (only 25% of the population was tested in a four-week  
54 period) (10, 11). Here we report new evidence from a program in the Canton Grisons (Switzer-  
55 land) suggesting that repetitive virus RNA mass testing is effective in reducing SARS-CoV-2  
56 incidence. Our observational study gives further insight into effectivity of mass testing in pres-  
57 ence of a significant number of exogenous contacts resulting from tourists and commuting labor  
58 force.

## 59 **Test concept in Canton Grisons**

60 The Canton of the Grisons, the largest in surface and easternmost Canton of Switzerland, shares  
61 borders with Italy, Austria and Liechtenstein, and has approximately 200'000 inhabitants. A  
62 large share of its economy is dedicated to tourism, e.g. in the past winter season, the Canton  
63 Grisons received around 200'000 tourists with 20% from abroad. Due to a high proportion  
64 of daily to weekly border crossing employees from the neighbouring countries, border disease  
65 control measures are less restrictive than in other parts of the world (in particular after the re-  
66 laxation of the initial lockdown during March-May 2020). The high incidence and death rates  
67 of COVID-19 both in Switzerland and in the neighbouring countries during October-November  
68 2020 and the spread of the new variants (especially B.1.1.7. in Switzerland before Christmas  
69 and B.1.351 in Tirol in January 2021), urged the Canton Grisons to launch a population-based  
70 mass testing campaign in order to intensify their mitigation strategy while maintaining cross-  
71 border socio-economical relationships.

72

73 Based on the experience acquired from a few rounds of pilot mass testing conducted in se-  
74 lected municipalities, a repetitive testing strategy for employees was developed for the entire  
75 Canton. In the first week of February 2021, 174 companies were recruited, with approximately  
76 100 businesses being added every week since then. The decision to focus on the working force  
77 was taken to maximize the benefits by targeting individuals with high mobility and large net-  
78 work of contacts (such as hotel employees), and to enable business continuity by preventing  
79 outbreaks in professional networks.

80

81 The mass testing campaign relies on voluntary repetitive testing of employees, who are mostly  
82 tested once per week (twice per week in a few cases). If the test turns positive, employees are  
83 asked to self-isolate, while their work contacts are identified and offered daily testing for ten

84 consecutive days. As long as they remain negative, they are allowed to continue to work on  
85 company's premises with few restrictions (e.g. wearing mask and minimizing contacts when  
86 possible): they are asked to self-isolate only if their own test result is positive. This "test-and-  
87 release" protocol minimizes the number of people in quarantine and thereby limits possible  
88 burdens on the participating businesses. In addition, external contacts (e.g., family and friends)  
89 of the infected employee are informed to take precautionary measures and test according to  
90 the associated contact tracing program. Even though they are not included in the mass testing  
91 program, their risk of infection will be reduced by having a part of their contact network (the  
92 employees enrolled in the mass testing program) regularly tested and a beneficial secondary  
93 effect is expected for the general canton's population.

94

95 The collected saliva samples are analyzed by the Reverse Transcription Polymerase Chain Re-  
96 action (RT-PCR) methods. The use of saliva samples ensures convenience of participants during  
97 the testing process. By quantifying the operative characteristics of the tests, a high specificity of  
98 0.999873 (corresponds to 1 false positive in 7'900 tests) and sensitivity close to nasopharyngeal  
99 swab RT-PCR were found (12). Test processing is expedited by mixing the pools of 5 samples  
100 (5 to 1) by the automated platform in the laboratory. The results are communicated within 24  
101 hours, resulting in a test-to-notice time of around 1 day (see *Supplementary materials, Study*  
102 *design and data acquisition*).

103

104 In total, 1'022 businesses, operating on 1'358 sites, joined the program from the beginning  
105 of February until the end of March, 2021. A total of 121'364 tests were conducted among  
106 27'514 employees without symptoms. Positive test results were found in 215 cases (0.78%)  
107 (see *Supplementary materials, Data pre-processing*).

## 108 **Factors affecting evaluation and how to quantify**

109 Quantifying the effect of such a repetitive mass testing program in businesses in a real-time  
110 setting is not straightforward.

111

112 On the one hand, estimates of the population-based indicators to quantify the effect size on  
113 the epidemic dynamics, such as the reproductive number, are confounded by the number of  
114 tests performed which was not constant over the considered period (13, 14).

115

116 On the other hand, the epidemiological situation changed over time. The proportion of the  
117 B.1.1.7 variant increased as a result of its higher transmissibility, whereas the population aged  
118 above 80 was being immunized during the period of our analysis, reducing the size of the sus-  
119 ceptible population.

120

121 Finally, different business sectors (e.g. tourism, banking, construction, with different num-  
122 ber of clients and cross-border employees) are present at varying proportions over time. This  
123 might significantly influence the effectiveness of the program, since companies with a higher  
124 number of customer contacts or cross-border employees are prone to a higher disease incursion.

125

126 For these reasons, instead of focusing on population-based epidemiological quantities in the  
127 Canton, here we limit ourselves to a finer-grain analysis: we evaluate the impact of testing  
128 on the evolution of the epidemics among participants. Therefore, we consider two groups of  
129 employees: the first group consists of the newly enrolled ones, the second group of the ones  
130 who have been enrolled in the program for a longer time and have therefore been tested repeat-  
131 edly. The testing results of the newly enrolled participants are used as a proxy for the spread of  
132 infection among the population outside of the program (control group without testing). To ac-

133 count for the influence of different epidemiological conditions at the time of enrollment, which  
134 change over time, we divided the repeatedly tested employees into different cohorts according  
135 to the week during which they joined the program (i.e., we define week 1, week 2, and week  
136 3 cohorts) (see *Supplementary materials, Cohort definition*). Here, we analyze the first two  
137 months of this program until the Easter break period, for which the data is already consolidated.

## 138 **Results**

### 139 **Test positivity rate and incidence rate ratio**

140 To infer the epidemiological changes among tested employees, we compute two complemen-  
141 tary quantities: test positivity rate (TPR) and incidence rate ratio. The seven-day average TPR  
142 is calculated as the proportion of new positive cases to the total number of RT-PCR tests per  
143 seven days. Figure 1 shows the Loess fit of the seven-day average TPR for the newly enrolled  
144 population (black line) along with the same quantity for repeatedly tested cohorts (blue, green  
145 and pink lines), (see *Supplementary materials, Overview of statistical methods*). We observe  
146 an increase in TPR among newly enrolled employees during the month of February, which is  
147 consistent with the increase in frequency of outbreaks in schools registered in this region, as  
148 well as with a concurrent expansion of the pandemic in several Swiss regions. The increase of  
149 TPR among the newly enrolled population results in quite different upstream epidemiological  
150 conditions for the different tested cohorts. Especially, the initial TPR value of the week 3 cohort  
151 is twice as high as the one corresponding to the week 1 cohort. Even though TPR was lower  
152 during enrollment of the week 1 cohort, this cohort shows a remarkably smaller and more un-  
153 certain reduction in TPR than the other two cohorts joining in later weeks.

154

155 The reduction of TPR over the period in which the cohort is repeatedly tested varies from  
156 73% (over 7 weeks) to 56% (over 6 weeks), for week 2 and week 3 cohorts, respectively. The

157 week 1 cohort shows a 44% increase over the entire eight-week period. Notice that during the  
158 same eight-week period, TPR of the newly enrolled population almost doubles (reaching a peak  
159 of 0.28% in the fourth week of the program). In general, all three repeatedly tested cohorts of  
160 employees exhibit evident reductions in TPR when compared to the newly enrolled population.  
161 Yet given the relatively important uncertainty resulting from our small sample size, the critical  
162 question is if the reductions in TPR translate into a statistically significant drop in the incidence  
163 rate of the tested cohorts.

164

165 As an integral measure of the reduction in the number of infections over the entire period,  
166 we calculate the incidence rate associated with the seven-day average TPR by normalizing the  
167 number of new positive cases by the person-time tested (see *Supplementary materials, Overview*  
168 *of statistical methods*). The ratio between the incidence rate of each cohort with respect to the  
169 newly enrolled population is provided in Table 1. The p-values reported in the table, estimated  
170 by mid-p exact method, correspond to the test that the incidence rate in the considered cohort  
171 has a lower value than the one in the newly enrolled population, hence testing is effective in  
172 reducing the number of infections. The estimated reduction in the incidence rate is 18% (95%  
173 CI: 0-47%) for the week 1 cohort, 47% (95% CI: 5-71%) for the week 2 cohort and 50% (95%  
174 CI: 4-76%) for the week 3 cohort. For the week 2 and week 3 cohorts, we find a statistically  
175 significant reduction of the incidence rate achieved by repetitive testing (p-values 0.03 and 0.04,  
176 respectively).

177

178 The milder reduction in TPR and incidence rate of the week 1 cohort can partly be explained  
179 by a higher exposure to exogenous disease incursion due to the higher representation of the  
180 tourism sector and cross-border employees in week 1 cohort in comparison to week 2 and week  
181 3 cohorts (for more details see also *Supplementary materials, Effect of tourism and cross-border*



Table 1: Ratio between the incidence rate of each repeatedly tested cohort with respect to the newly enrolled population

Starting week of cohort	Estimate	p-value	95% CI
week 1	0.82	0.36	(0.53,1.25)
week 2	0.53	0.03	(0.28, 0.95)
week 3	0.50	0.04	(0.24, 0.96)

182 *commuters* ).

### 183 **Tourist season and exogenous contacts**

184 Tourism industry is one of the major economical resources of the Canton Grisons. During the  
185 past winter season (December 2020 to March 2021), around 200'000 tourists resulted in an  
186 additional exogenous infection source in the Canton. Around a quarter (26%) of all tests were  
187 carried out among people employed in the tourism sector. Remarkably, this business sector ac-  
188 counted for almost half (48%) of all positive tests, which results in a frequency of positive cases  
189 that is close to two times larger than in other business sectors.

190

191 Figure 2 indicates that approximately 45% of the participants in the first week cohort work  
192 in the tourism sector. This fraction reduces to 20-30% for the cohorts of weeks 2 and 3, and  
193 keeps decreasing further afterwards. The businesses participating from the tourism sector are  
194 broadly distributed, representing a comparatively larger fraction of businesses in the regions of  
195 St. Moritz, Davos, Pontresina and Arosa. Conversely, the other business sectors are more con-  
196 centrated in Chur and to a less degree in Davos. In the first week cohort we observe a prevalence  
197 of individuals employed in companies located in Davos, St. Moritz, and Pontresina, as well as a  
198 noticeable fraction of individuals from peripheral regions with shared borders (e.g., Bregaglia).  
199 Instead, the cohorts of week 2 and week 3 are characterized by a higher representation of the  
200 region of Chur, which hosts offices and factories, in addition to the touristic region of St. Moritz

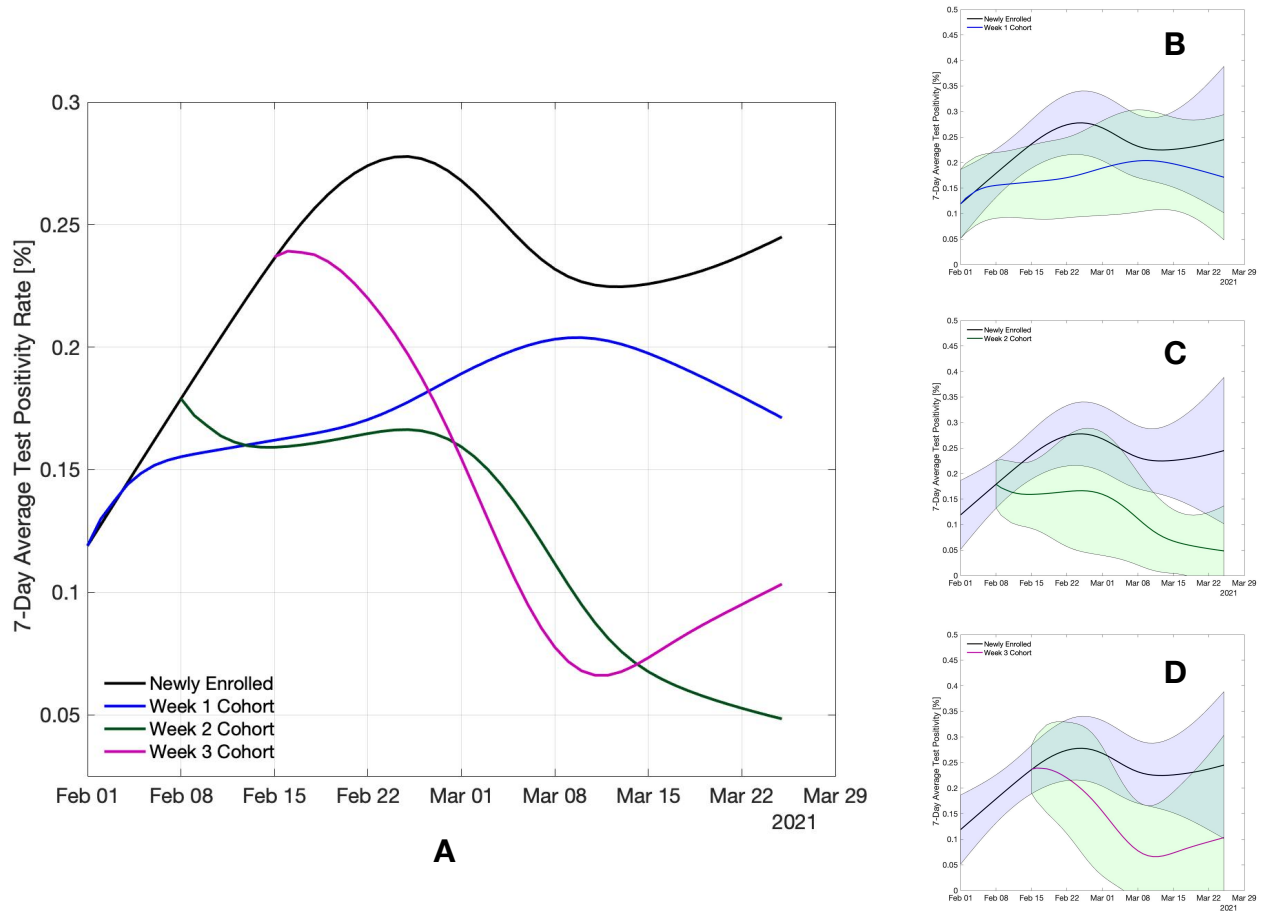


Figure 1: Evolution of TPR (%) for the newly enrolled population as well as other three cohorts considered. Panel A: Loess fitted 7-day average TPR. Panels B, C and D: Loess fitted 7-day average TPR overlaid by 95% CI computed via bootstrapping of the data set (see Fig 4 in *Supplementary materials* for non-smoothed 7-day TPR).

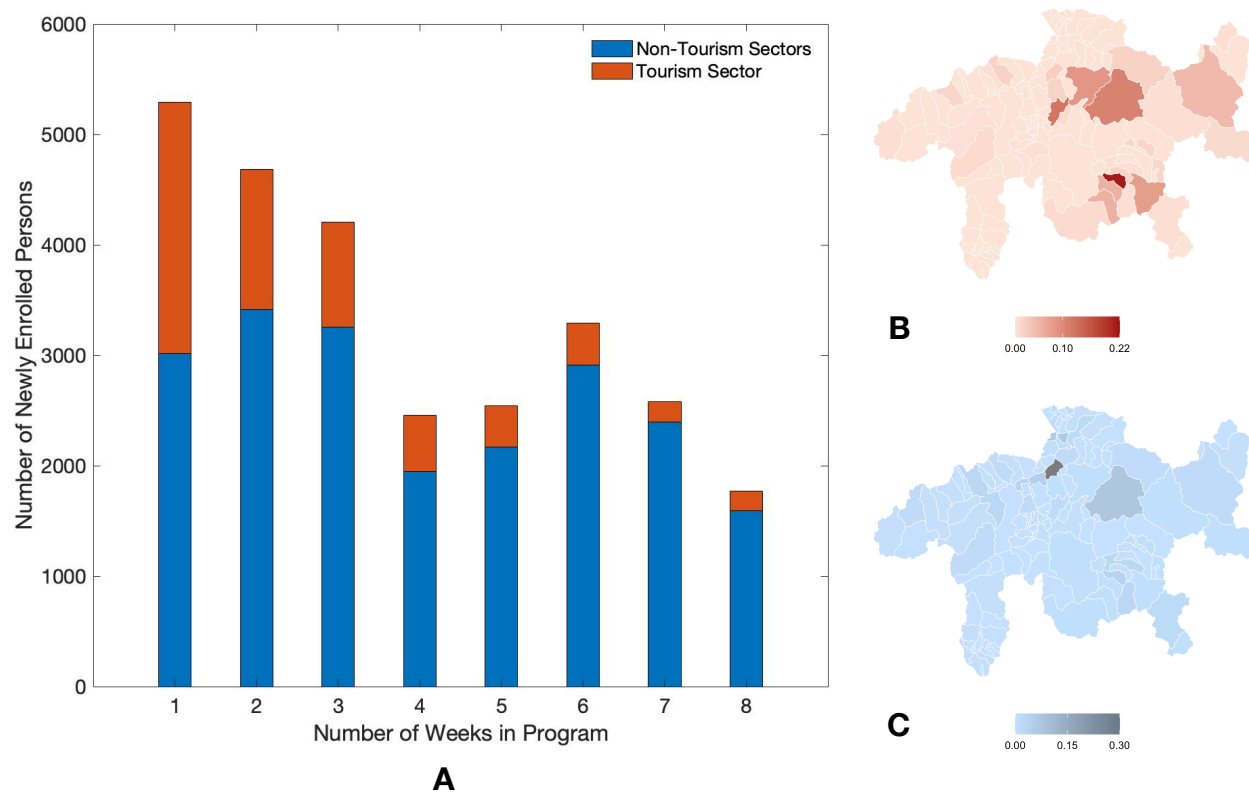


Figure 2: Enrollment and geographic distribution. Panel A: Number of newly enrolled employees versus the number of weeks since initiation of the program. Panels B and C: The geographic distribution of work-places of program participants in tourism sector and non-tourism sectors, respectively (see Fig 3 in *Supplementary materials* for more details).

201 which is also present in week 1 cohort (see *Supplementary materials, Cohort definition*).

202

203 The number of tourists peaked around December and February, and started declining towards  
204 the middle of March. This variation in the number of tourists could explain the increase of  
205 TPR among the newly enrolled individuals (control group without testing) during the month of  
206 February (peaking around the fourth week) and the decline observed afterwards. The tourists  
207 and the large proportion of foreign workforce employed in the tourism industry are a poten-  
208 tial source of exogenous disease incursion and can noticeably contribute to the incidence of  
209 COVID-19 in the Canton Grisons. The fluctuation in the proportion of businesses from the  
210 tourism sector in the three cohorts is a potential source of confounding effect in our analysis.

211

212 In particular, the week 1 cohort bears the highest proportion of the tourism work force and  
213 shows the least reduction in TPR. This might be explained by two effects. First, the employees  
214 who were mostly in contact with visiting tourists were subject to a higher disease transmissi-  
215 bility, resulting from a larger number of contacts with untested individual (as tourists are not  
216 part of the program) and possibly coming from regions with higher prevalence. Second, many  
217 employees in this sector were crossing borders on a daily or weekly basis, hence their risk of  
218 exposure to infected individuals might differ from that of employees in non-tourism sectors,  
219 which mostly remained within the Canton during the time of our study. These hypotheses  
220 are supported by an analysis performed on a reduced data set from which a few touristic and  
221 near-border municipalities have been excluded. The reevaluated reduction in the incidence rate  
222 almost doubles from 18% to 34% for week 1 cohort, and increases from 48% to 51% for week  
223 2 cohort, and from 43% to 61% for week 3 cohort (see Table 4 and *Supplementary material,*  
224 *Effect of tourism and cross border commuters* for the details).

## 225 Discussion

226 The question whether repetitive mass testing can play a key role in response to COVID-19 pan-  
227 demic, has important health, economical and social implications. The data collected from busi-  
228 ness testing program of the Canton Grisons provide the first empirical evidence that repetitive  
229 mass testing is indeed effective to prevent spread of the epidemic. Even though the repetitive  
230 testing campaign for COVID-19 mitigation on such a population scale and over such an ex-  
231 tended period of time is unprecedented, our sample size remains relatively small: about 200  
232 positive tests resulting from repetitive testing of around 27'000 individuals over eight weeks.  
233 This results in a considerable uncertainty in our analysis. Nevertheless the reduction in the  
234 incidence rate that we observed is statistically significant, especially among the groups of em-  
235 ployees with lower exposure to exogenous disease incursions (e.g., individuals not employed in  
236 the tourism sector nor living in touristic/peripheral regions). This is encouraging as it shows that  
237 intensifying repetitive testing can be a viable complement to the existing non-pharmaceutical  
238 intervention strategies to reach epidemic control.

239

240 Several features contributed to the success of our testing program. The use of saliva based  
241 RT-PCR tests, with no nasal swab required, has certainly fostered a high participation rate and  
242 consistent repetitive testing: the program uptake among employees was 74% during February-  
243 March 2021, with an estimated drop-out by the second month lower than 10%. Furthermore, the  
244 high specificity of the employed RT-PCR tests assures that only a few false positive cases can be  
245 expected; this is important to keep testing and self-isolation effective also when the prevalence  
246 of the tested population is relatively low. Finally, the efficiency of the test analysis was im-  
247 proved by automated pooling of the samples in the laboratory, which allowed us to scale up the  
248 size of the tested population for a given testing capacity and to keep the test-to-notice time short.

249

250 To define the objectives and plan a successful repetitive testing concept, it is important to care-  
251 fully consider the interaction within and between the tested and untested sub-populations, as  
252 their dynamic is far from being homogeneous. On the one hand, the repeatedly tested indi-  
253 viduals actively contribute to curb the virus spread: as the tested cohort itself benefits from a  
254 reduced incidence, their untested contacts are also exposed to a lower risk of infection. On  
255 the other hand, interactions of tested cohort with individuals outside of the program expose the  
256 former to the transmission risk originated from the latter, reducing the effectiveness of testing.

257

258 Our analysis supports that a higher number of active participants per company site tended to  
259 correlate with smaller incidence rates, hence confirming the requirement of achieving a suffi-  
260 ciently large uptake among employees (*Supplementary materials, Overview of statistical meth-*  
261 *ods*). Also, a higher number of tourists or cross-border employees from regions not covered  
262 by the testing program represented a potential source of disease incursion and were associated  
263 with a lower reduction of the incidence rate. In order to more efficiently control the epidemic,  
264 therefore it is important to adapt the testing program according to the varying level of exposure  
265 to the exogenous sources of infection. This can be achieved, for instance, by a larger uptake  
266 and a more frequent testing among individuals with an extended network of contacts outside of  
267 the program.

268

269 If carefully designed, repetitive mass testing programs can complement other public health  
270 measures, limiting socio-economical tolls resulting from extreme interventions. In the current  
271 COVID-19 pandemic, as the share of vaccinated people is growing fast across several coun-  
272 tries, including Switzerland, a certain amount of repetitive testing can still help complement the  
273 relaxation of measures until a sufficiently large fraction of the population is vaccinated. Re-

274 sorting to repetitive mass testing programs remains certainly valuable, for instance, in societal  
275 branches for which vaccination isn't possible yet or in which outbreaks due to exposure to new  
276 mutants is highly probable (e.g. at schools or in the tourism sector). This requires a coordinated  
277 engagement of policy makers, communities and the public to adopt carefully designed testing  
278 programs that could be sustained over an extended period of time.

## 279 **References**

- 280 1. N. C. Grassly, *et al.*, *The Lancet Infectious Diseases* **20**, 1381 (2020).
- 281 2. D. B. Larremore, *et al.*, *Science advances* **7**, 5393 (2021).
- 282 3. H. Gorji, M. Arnoldini, D. Jenny, W.-D. Hardt, P. Jenny, *Swiss Medical Weekly* (2021).
- 283 4. Z. Du, *et al.*, *The Lancet Public Health* **6**, e184 (2021).
- 284 5. J. P. Skittrall, *et al.*, *The Lancet Regional Health-Europe* **1** (2021).
- 285 6. E. Mahase, Covid-19: People are not being warned about pitfalls of mass testing (2021).
- 286 7. R. Weissleder, H. Lee, J. Ko, M. J. Pittet, *Science translational medicine* **12** (2020).
- 287 8. M. Pavelka, *et al.*, *Science* (2021).
- 288 9. M. García-Fiñana, I. E. Buchan, *Science* **372**, 571 (2021).
- 289 10. I. Buchan (2020).
- 290 11. M. Green, *et al.*, *The Lancet Regional Health-Europe* **6**, 100107 (2021).
- 291 12. R. C. Baron, *et al.*, *Clinical Chemistry and Laboratory Medicine (CCLM)* **1** (2020).
- 292 13. V. E. Pitzer, *et al.*, *MedRxiv* (2020).

- 293 14. Y. Suhail, J. Afzal, *et al.*, *BMC medical research methodology* **21**, 1 (2021).
- 294 15. J. S. Huisman, *et al.*, *medrxiv* (2020).
- 295 16. C. Chen, *et al.*, *medRxiv* (2021).
- 296 17. R Core Team, *R: A Language and Environment for Statistical Computing*, R Foundation  
297 for Statistical Computing, Vienna, Austria (2013). ISBN 3-900051-07-0.
- 298 18. A. Canty, B. D. Ripley, *boot: Bootstrap R (S-Plus) Functions* (2021). R package version  
299 1.3-28.
- 300 19. A. C. Davison, D. V. Hinkley, *Bootstrap Methods and Their Applications* (Cambridge Uni-  
301 versity Press, Cambridge, 1997). ISBN 0-521-57391-2.
- 302 20. E. Sergeant, *Ausvet Pty Ltd* (2018).
- 303 21. K. J. Rothman, S. Greenland, T. L. Lash, *Modern epidemiology* (Lippincott Williams &  
304 Wilkins, 2008).



305 **Supplementary materials**

306 Methods

307 Figs. 3 to 4

308 Tables 2 to 4

309

## 310 **Methods**

### 311 **Study design and data acquisition**

312 After the company signs up for the testing program, the employees register to the IT system  
313 and the validity of their data entry is confirmed. Saliva samples are collected by rinsing the oral  
314 cavity with 2 ml reagent grade water for one minute. Program participants are instructed not to  
315 eat, drink, smoke or brush teeth 1 hour before sample collection. The fluid is then collected by  
316 means of a plastic funnel into a dedicated CE-marked sterile sample tube containing crystalline  
317 guanidine thiocyanate in order to inactivate the sample and stabilize viral RNA. We determined  
318 stability of RNA-levels at room temperature for 5 days. Testing vessels are delivered by the  
319 Swiss post. For the collection of the samples, the employer delivers the samples to predefined  
320 collecting points from where the Swiss post together with the regional train, transport the sam-  
321 ples to the lab.

322

323 Pools of 5 samples received at the same day in the laboratory are mixed in a fully automated  
324 platform preventing contamination in the pipetting procedure. For each single program partici-  
325 pant an additional separate sample is produced and stored in a sample archive. RNA of the pool  
326 sample is purified by means of an automated extraction platform. The SARS-CoV-2 specific  
327 RNA is then amplified by means of a commercial test kit run on a QuantStudio 5 instrument.  
328 This assay tests for presence of 3 different genes of the SARS-CoV-2 virus (N-gene, ORF1ab-  
329 gene, S-gene). Negative and positive control materials are tested with each run. When a pooled  
330 sample tested positive or ambiguous, the stored samples of the pool participants are analyzed  
331 at an individual level, in order to identify individuals positive for SARS-CoV-2. The results are  
332 communicated within 24 hours upon submission of the samples.

333

334 Positively identified individuals are asked to self-isolate for ten days. The quarantine of the  
335 work contacts of the positive cases is waved and replaced by daily testing for maximum of ten  
336 days; the work contacts of the positive case are asked to self-isolate only in case their test re-  
337 sults turns out positive. Test results from the laboratory are entered into the IT platform by hand  
338 and the results are expressed in MS Excel spreadsheets. The pseudonymized data set includes  
339 unique identifiers for the company site and the tested employee, besides the testing date, the test  
340 result, the municipality of the company and the business sector.

### 341 **Data pre-processing**

342 From 146'823 entries related to company testing in February and March 2021, 25'449 (17%)  
343 entries did not have a test result. This was typically the case when an employee gets a testing  
344 voucher but does not take the test. We remove the records without test results, and analyze only  
345 the curated data set.

346

347 In the case of multiple tests per seven-day time window, only one test per person is counted.  
348 The result of the test is considered positive if any of the tests taken in the seven-day time win-  
349 dow gives a positive result.

350

351 The contacts of positive cases comprise a high-prevalence sub-population, thus the chance that  
352 they are identified as positive is higher than for a randomly chosen person from the same cohort  
353 (as contacts are tested daily). On the other hand, excluding the contact testing records from the  
354 analysis would make the number of positive cases in repeatedly tested cohorts biased towards  
355 lower values (as the contacts of positive cases would not be counted). Therefore we make a  
356 conservative choice and do not differentiate between the test results of the contact testing pro-  
357 gram from the rest. We expect that an ideal random testing program would reach a stronger

358 effect compared to the results of our analysis.

359

360 In total, 266 tests rendered positive results, yet 51 are repeated positive tests (19% of all positive  
361 tests). This is due to three main reasons:

- 362 1. The delay in the test-to-notice process for daily contact testing can lead to a scenario  
363 where a person is tested on the following day while still uninformed about positive result  
364 of the past day. As a result, two positive tests of the same person in two consecutive days  
365 would be recorded in the data set.
- 366 2. After recovery, a person might still show up positive in the PCR test.
- 367 3. In a few cases, the positive tested employee does not adhere to the self-isolation rule and  
368 repeats the test.

369 In our analysis, which covers a period of two months, we count a positive test result only once  
370 per person.

## 371 **Cohort definition**

372 We define the following sub-populations of test results.

- 373 1. Newly enrolled population: A test is counted in the newly enrolled statistics if the person  
374 hasn't been previously tested in our testing campaign, and if the company site has not  
375 been in the program for more than two weeks prior to the test date. The latter condition is  
376 introduced to exclude (to some extent) the effect of community protection due to testing,  
377 which might occur among those employees of a company that have started to participate  
378 later.
- 379 2. Week 1-3 cohorts: These cohorts are composed of employees that enter the program  
380 during the same week (numbered sequentially from the start of the program) and named

381 week 1, week 2, and week 3 cohorts. During its first seven days each cohort coincides  
382 with the newly enrolled population. We only count an individual in the cohort if at least  
383 5 persons from the same company site participate consistently (i.e., they are tested every  
384 week). In other words, we only keep those individuals in the cohort, whose companies  
385 sites remain active in the program. Notice that the results are robust with respect to the  
386 adopted minimum number of active participants per company site, henceforth called "unit  
387 cohort size" (illustrated in Tables 2 and 3).

388 Figure 3 shows the geographical distribution of the work places of newly enrolled employees.  
389 The share of touristic and near-border regions is noticeably higher in the week 1 cohort than in  
390 the cohorts of the two subsequent weeks.

391

392 The program participation rate during February-March 2021 has been 74%; 9.9% of employ-  
393 ees who tested at least once during February, submitted no test during March, suggesting an  
394 estimated drop-out rate of 10% per month.

## 395 **Overview of statistical methods**

396 The daily data are too scarce and largely affected by the weekly periodicity, particularly visible  
397 in the consistently lower number of tests during the weekend. Therefore, we apply a moving  
398 average with a seven-day time window (forward in time). The following two analyses are then  
399 performed.

400 1. Test Positivity Rate (TPR) : To compute the seven-day average TPR at a given date in  
401 a certain sub-population, the total number of discovered positive cases is divided by the  
402 number of tests in the seven-day window. Only one test per person is counted per consid-  
403 ered period. If  $\tau$  is the time (day), let  $\bar{I}(\tau)$  and  $\bar{N}(\tau)$  be the total number of new positive  
404 cases detected and the number of tested persons during the period  $[\tau, \tau + 6]$ , respectively.

405 Therefore the seven-day-average TPR is given by  $\text{TPR}(\tau) = \bar{I}(\tau)/\bar{N}(\tau)$ . The histograms  
406 in Fig. 4 (A), (B) and (C) show the resulting TPR for newly enrolled employees side by  
407 side with the week 1,2 and 3 cohorts, respectively.

408  
409 For smoothing and uncertainty quantification of time series data, we follow an approach  
410 similar to the one discussed in (15, 16). The seven-day average TPR is smoothed using  
411 a first order local polynomial regression (Loess) algorithm with bandwidth 0.65 (17). To  
412 quantify the uncertainty band, we apply bootstrapping prior to the computation of the  
413 seven-day average TPR and its corresponding Loess fit. A resampled record is obtained  
414 by sampling entries from the original data set under uniform probability and replacing  
415 them in the data set (18, 19). Thus the obtained resampled data set has a length similar  
416 to the original one. We generated 500 resampled data sets, and applied normal distri-  
417 bution for quantifying uncertainty of the estimated statistics. To ensure that the starting  
418 points of week 1,2 and 3 cohorts and their uncertainties lie on the ones obtained from the  
419 newly enrolled population after smoothing, the Loess weights are locally adjusted and the  
420 neighbourhood of the intersection points are smoothed again by moving averaging. The  
421 Loess fitted TPR and its 95% CI are shown in Fig. 1 (B), (C) and (D) for week 1,2 and 3  
422 cohorts, respectively, besides the newly enrolled population.

423 2. Incidence Rate Ratio: In order to extract information with a lower uncertainty than the  
424 TPR time series, we complement the analysis by calculating the incidence rate as an in-  
425 tegral measure over the entire considered period. Accordingly, the following analysis  
426 would not rely on smoothing the seven-day average time series, and thus the results are  
427 independent of the Loess fit. We compute the incidence rate for each sub-population as  
428 proportion of the total number of new positive cases to the person-time, i.e. each person  
429 is counted for the number of weeks being tested in the sub-population. Therefore, the

430 adopted incidence rate is an approximation of the area below the TPR curve (normalized  
431 by time). In order to avoid complications in our incidence rate estimations, we assume  
432 unity sensitivity and specificity of the tests. Furthermore, the time lag between infection  
433 and detection via the test is neglected. By binning the data of each cohort into weeks, we  
434 estimate the incidence rate of cohort 1 from week 2 till 8, cohort 2 from week 3 till 8, and  
435 cohort 3 from week 4 till 8. The incidence rates are compared with the incidence rate of  
436 the newly enrolled population for the same time period.

437  
438 Consider  $\text{IR}_c^j$  to be the incidence rate for the repeatedly tested cohort that joins the pro-  
439 gram at week  $j \in \{1, 2, 3\}$ . Let  $N^j(i)$  and  $I^j(i)$  be the number of tested people and  
440 number of new positive cases, respectively, at week  $i$  in the cohort  $j$ . Therefore the inci-  
441 dence rate for a cohort that starts at week  $j$  is

$$\text{IR}_c^j = \frac{\sum_{i=j+1}^8 I^j(i)}{\sum_{i=j+1}^8 N^j(i)}. \quad (1)$$

442 Accordingly, for the newly enrolled incidence rate  $\text{IR}_0$  we have

$$\text{IR}_0(n_0) = \frac{\sum_{i=n_0}^8 I_0(i)}{\sum_{i=n_0}^8 N_0(i)}, \quad (2)$$

443 where  $N_0(i)$  and  $I_0(i)$  are the number of tested people and discovered positive cases,  
444 respectively, at week  $i$  among the newly enrolled population. In order to compare the in-  
445 cidence rate of each cohort with the newly enrolled population for a similar time interval,  
446 we set  $n_0$  to 2, 3 and 4, for comparing  $\text{IR}_0$  to  $\text{IR}_c^{j=1}$ ,  $\text{IR}_c^{j=2}$  and  $\text{IR}_c^{j=3}$ , respectively. The  
447 corresponding reduction in the incidence rate for a cohort starting at week  $j$  then follows

$$C^j = 1 - \frac{\text{IR}_c^j}{\text{IR}_0(n_0 = j + 1)}. \quad (3)$$

448 The reduction in the incidence rate is computed from the incidence rate ratio estimated by  
449 the package Epitools (20). The confidence intervals together with p-values are computed

450 using mid-p exact method (20, 21). The results are provided in Table 1. Furthermore,  
451 we repeat the evaluation of the incidence rate ratio by changing the minimum number  
452 of consistent participants per company site. The results are given in Table 2 for unit  
453 cohort size of 3, and in Table 3 for unit cohort size of 7. While the estimates do not vary  
454 much with respect to the unit cohort size, we observe that larger unit cohort sizes tend to  
455 correlate with smaller incidence rate ratios, and thus stronger reduction in the incidence  
456 rate. For example in the week 1 cohort, we find that the reduction increases from 16% to  
457 26%, once the unit cohort size grows from 3 to 7. This is in line with the expectation that  
458 more effective reduction in the incidence rate would be achieved in companies, where  
459 larger pools of employees participate in the program.

## 460 **Effect of tourism and cross-border Commuters**

461 To better understand the disparity in TPR and incidence rate reduction of different cohorts, we  
462 analyze the effects of tourism-sector employees and cross-border commuters. While it is pos-  
463 sible to exclude from the data set the employees defined as working in the tourism sector and  
464 reevaluate the effect of repetitive testing in the filtered data set, it may not provide a correct  
465 evaluation of the effects of visitors and commuters. Indeed, not all business branches that deal  
466 with tourist clients are categorized as tourism sector (e.g., employees that provide various ser-  
467 vices in train stations interact often with tourists but are not counted as being employed in the  
468 tourism sector); moreover, our cohorts are not isolated and interact with large portions of the  
469 population outside of the program. Also, due to the limited amount of data (resulting in wide  
470 uncertainty bounds, Fig. 1), removing a large portion of the data can be misleading. It may be  
471 more appropriate to take into account tourist-related infections by performing a regional anal-  
472 ysis of the data rather than separating the different business sectors. Therefore, we decided to  
473 exclude a few touristic and near-border municipalities from the data set.



Table 2: Ratio between the incidence rate of each repeatedly tested cohort with respect to the newly enrolled population, for unit cohort size of 3

Starting week of cohort	Estimate	p-value	95% CI
week 1	0.84	0.42	(0.55,1.28)
week 2	0.48	0.01	(0.26,0.85)
week 3	0.54	0.05	(0.27,1)

474

475 In the week 1 cohort we identify three regions with the highest number of employees work-  
476 ing in the tourism sector: Davos, Pontresina and Vaz/Obervaz. We remove from the data set  
477 these municipalities as well as two peripheral regions Landquart and Bregaglia, which are more  
478 represented in the week 1 cohort than in the other two. In the filtered data set we observe that  
479 the share of tourism sector is shrank from 43% to 34% in week 1 cohort, from 27% to 26% in  
480 week 2 cohort, and from 23% to 22% in week 3 cohort. The incidence rate ratio of each cohort  
481 with respect to the newly enrolled one is re-evaluated and reported in Table 4. The incidence  
482 rate reduction almost doubles from 18% to 34% for week 1 cohort, and increases from 48% to  
483 51% for week 2 cohort, and from 43% to 61% for week 3 cohort. This supports the hypothesis  
484 that the relatively small reduction of TPR of the week 1 cohort in the original data set can be  
485 explained by an over representation of regions with higher rates of tourists and cross-border  
486 commuters.

## 487 **Data and Code Availability**

488 The source data set is available on [https://www.gr.ch/DE/institutionen/verwaltung/djsg/ga/coronavirus/](https://www.gr.ch/DE/institutionen/verwaltung/djsg/ga/coronavirus/info/medien/Seiten/Medien.aspx)  
489 [info/medien/Seiten/Medien.aspx](https://www.gr.ch/DE/institutionen/verwaltung/djsg/ga/coronavirus/info/medien/Seiten/Medien.aspx). The analysis was implemented with R. The corresponding  
490 codes are available upon request from the corresponding author.

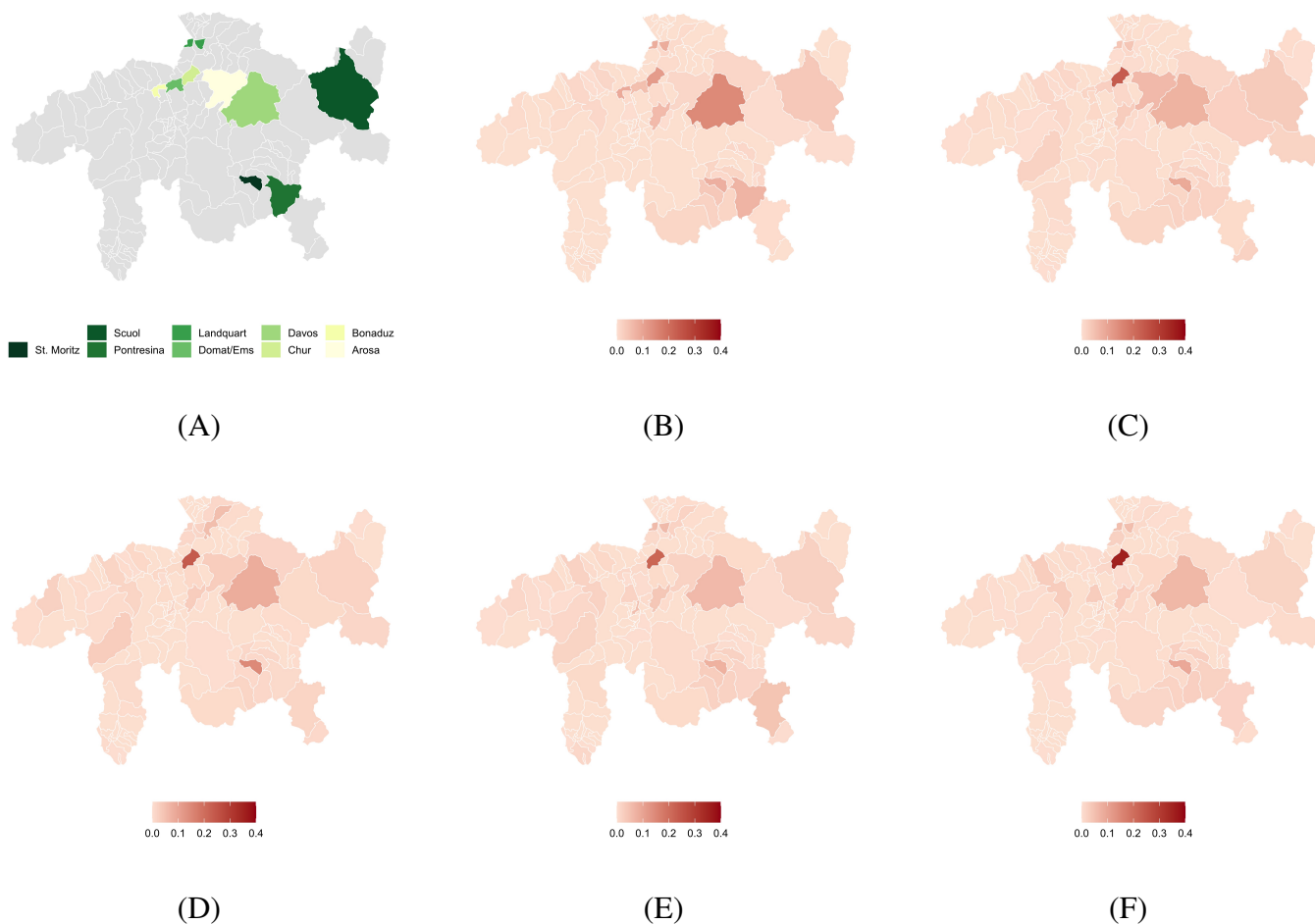


Figure 3: Geographical distribution of the participating businesses. Enrollments from week 1 to week 5 correspond to panels (B) to (F), respectively. The distribution of the work place location of newly enrolled employees is color-coded for each week. Panel (A) provides names of few municipalities in the Canton Grisons.

Table 3: Ratio between the incidence rate of each repeatedly tested cohort with respect to the newly enrolled population, for unit cohort size of 3

Starting week of cohort	Estimate	p-value	95% CI
week 1	0.74	0.18	(0.46,1.15)
week 2	0.49	0.02	(0.27,0.91)
week 3	0.47	0.04	(0.21, 0.95)

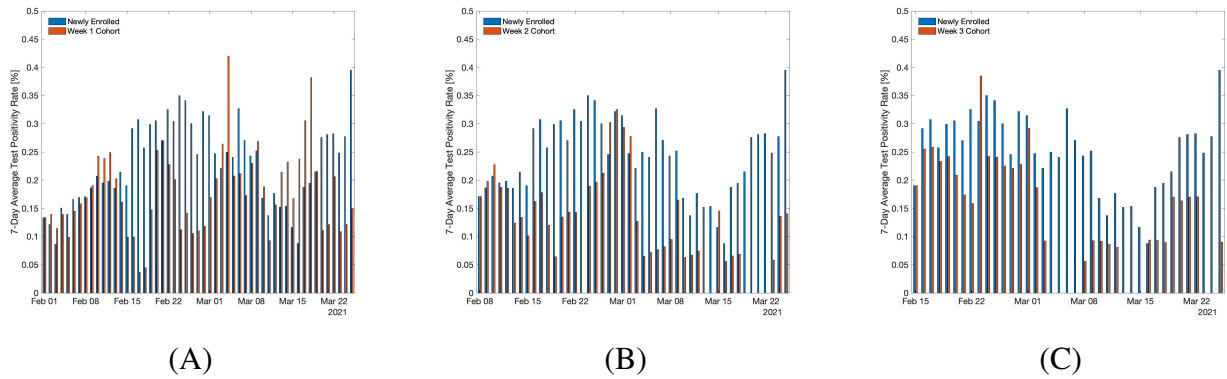


Figure 4: 7-day average TPR (%). Panels (A), (B) and (C) show the TPR for newly enrolled employees side by side with the week 1,2 and 3 cohorts, respectively.

Table 4: Ratio between the incidence rate of each repeatedly tested cohort with respect to the newly enrolled population, excluding touristic and peripheral regions

Starting week of cohort	Estimate	p-value	95% CI
week 1	0.66	0.14	(0.36,1.15)
week 2	0.49	0.03	(0.24,0.92)
week 3	0.39	0.01	(0.16,0.83)