

1 **Gender-Specific Long-Term Prognostic Values of QRS Duration, QT Interval, and QTc**
2 **from Automated ECG Analysis for Mortality and Adverse Outcomes in Patients**
3 **Hospitalized for Heart Failure**

4 Short title: Gender-specific HF prognostication by Auto ECG

5 Jiandong Zhou *¹, Sandeep S Hothi MB BChir PhD FRCP *², Jeffery Shi Kai Chan
6 MBChB³, Sharen Lee³, Wing Tak Wong PhD⁴, Keith Sai Kit Leung BSc⁵, Abraham Ka
7 Chung Wai MBChB FRCP FRCM⁵, Kamalan Jeevaratnam PhD⁶, Tong Liu MD PhD⁷,
8 Gary Tse PhD FRCP FHRS #^{6,7}, Qingpeng Zhang PhD #¹

9 ¹ School of Data Science, City University of Hong Kong, Hong Kong, Hong Kong, China

10 ² New Cross Hospital, Wolverhampton, United Kingdom

11 ³ Cardiovascular Analytics Group, Laboratory of Cardiovascular Physiology, Hong Kong,
12 China

13 ⁴ School of Life Sciences, The Chinese University of Hong Kong, Hong Kong, China

14 ⁵ Emergency Medicine Unit, Li Ka Shing Faculty of Medicine, The University of Hong Kong,
15 Hong Kong, China

16 ⁶ Faculty of Health and Medical Sciences, University of Surrey, Guildford, United Kingdom

17 ⁷ Tianjin Key Laboratory of Ionic-Molecular Function of Cardiovascular Disease,
18 Department of Cardiology, Tianjin Institute of Cardiology, Second Hospital of Tianjin
19 Medical University, Tianjin 300211, China

20 * equal contributions

21 # Correspondence to:

22 *Prof. Gary Tse PhD FRCP*

23 Tianjin Key Laboratory of Ionic-Molecular Function of Cardiovascular Disease, Department
24 of Cardiology, Tianjin Institute of Cardiology, Second Hospital of Tianjin Medical
25 University, Tianjin 300211, China

26 Faculty of Health and Medical Sciences, University of Surrey, GU2 7AL, Guildford, United
27 Kingdom

28 Email: g.tse@surrey.ac.uk

29 *Prof. Qingpeng Zhang PhD*

30 School of Data Science, City University of Hong Kong,
31 Hong Kong, China

32 Email: qingpeng.zhang@cityu.edu.hk

33

1 Conflicts of interest: none

2 **Abstract**

3 **Background:** Gender-specific prognostic values of electrocardiographic (ECG)
4 measurements in patients hospitalized for heart failure (HF) are lacking, which we hence
5 investigated in this study.

6 **Methods:** Patients admitted to a single tertiary center for HF between 1 January 2010 and 31
7 December 2016 without atrial fibrillation and with at least one baseline ECG were included.
8 Automated ECG measurements were performed. The primary outcomes were all-cause and
9 cardiovascular (CAD) mortality, and the secondary outcomes were stroke, and ventricular
10 arrhythmia and sudden cardiac death (VA/SCD). The prognostic values of the heart rate, PR
11 segment, QRS duration, PT interval, QT interval, and QTc were assessed. Gender-specific
12 optimal cutoffs of the above measurements were identified with the maximally selected rank
13 statistics approach.

14 **Results:** In total, 2718 patients (median age 77 years; 1302 males) were included with a
15 median follow-up of 4.8 years; the females were significantly older ($p < 0.0001$). Females had
16 higher rates of all-cause ($p = 0.04$) and CAD mortality ($p = 0.02$), while males had higher rates
17 of VA/SCD ($p = 0.02$). Higher heart rate, longer PT interval, wider QRS, and longer QT
18 interval and QTc predicted all-cause mortality in males, while only shorter PR segment,
19 longer QRS duration and QTc predicted the same in females. Longer QRS duration, QT
20 interval, and QTc predicted CAD mortality in males, while longer PT interval, wider QRS

1 and longer QTc predicted the same in females. ECG measurements also predicted the
2 secondary outcomes to different extents depending on genders.

3 **Conclusions:** Selected ECG measurements have significant gender-specific prognostic value
4 in patients admitted for heart failure.

5

6 **Keywords:** heart failure; electrocardiography; gender-specific outcomes; prognosis;
7 automated ECG

1 **Introduction**

2 Described as an emerging epidemic over 20 years ago, an estimated 64.3 million people lives
3 with heart failure globally (1). As a heterogeneous clinical syndrome often presenting with
4 signs and symptoms of fluid overload in acute exacerbations, heart failure is associated with
5 varying degrees and progression of structural and electrophysiological alterations of the heart,
6 and numerous previous studies have shown arrhythmogenic cardiac remodeling in heart
7 failure (2, 3).

8 Heart failure admissions are common and costly (4), necessitating good prognostic markers
9 for optimal risk stratification and early intervention for high-risk patients. Aside from blood
10 tests and echocardiography, electrocardiogram (ECG) is one of the essential tools in the
11 investigation and management of heart failure, in-patient and out-patient alike (5-7). In
12 particular, ECG is readily available, inexpensive, and could be useful indicators of new onset
13 morbidity and mortality in heart failure (HF) patients (7, 8).

14 However, gender-specific data of the prognostic value of ECG measurements are lacking.
15 Gender differences in electrophysiological measurements are well known -- physiological
16 data in healthy subjects have shown that QRS duration is shorter in females compared to
17 males (9) . As such, the generalizability of non-gender-specific prognosticators cannot be
18 assumed. As such, this study aimed to explore the gender-specific associations of other ECG
19 measurements such as ventricular rate, PR segment, QRS duration, PT interval, QT interval,
20 QTc and their dichotomized characteristics with the adverse outcomes of all-cause mortality,

1 cardiovascular mortality, stroke, and ventricular arrhythmia / sudden cardiac death (VA/SCD)
2 in heart failure patients.

3

4 **Methods**

5 *Study design and population*

6 This study was approved by The Joint Chinese University of Hong Kong - New
7 Territories East Cluster Clinical Research Ethics Committee. This was a retrospective,
8 territory-wide cohort study of hospitalized patients with ECG measurements between 1st
9 January 2000 and 31st December 2019 from a single tertiary center in Hong Kong, China.
10 The patients were identified from the Clinical Data Analysis and Reporting System (CDARS),
11 a territory-wide database that centralizes patient information from 43 local hospitals and their
12 associated ambulatory and outpatient facilities to establish comprehensive medical data,
13 including clinical characteristics, disease diagnosis, laboratory results and drug treatment
14 details. The system has been previously used by both our team and other teams in Hong Kong
15 (10-12). Patients demographics, prior comorbidities, hospitalization characteristics before and
16 after initial ECG measurement date, medication prescriptions, laboratory examinations of
17 complete blood counts, biochemical renal and liver function tests, lipid and glucose tests
18 were extracted. The *International Classification of Diseases, Ninth Revision, Clinical*
19 *Modification* (ICD-9-CM) codes for comorbidities are detailed in the **Supplementary Table**
20 **1.**

1

2 *Automated ECG measurements*

3 Automatically measured parameters from ECG related to the P, Q, R, S and T-wave were
4 extracted. The baseline ECG obtained on the first HF admission was selected.

5

6 *Outcomes and statistical analysis*

7 The primary outcomes were all-cause mortality and cardiovascular mortality, and
8 secondary outcomes include VA/SCD and stroke with follow-up until 31st December 2019
9 (**Figure 1**). Mortality data were obtained from the Hong Kong Death Registry, a
10 population-based official government registry with the registered death records of all Hong
11 Kong citizens linked to CDARS. Cardiovascular mortality outcome was identified in death
12 registry with *International Classification of Diseases, Tenth Revision, Clinical Modification*
13 (ICD-10-CM) codes I10-I79. There was no adjudication of the outcomes as this relied on the
14 ICD-9 coding or a record in the death registry. However, the coding was performed by the
15 clinicians or administrative staff, who were not involved in the model development. Patients
16 without 12-lead ECG measurements and those with prior AF were excluded. The remaining
17 cohort included 2718 patients.

18 Continuous variables were presented as median (95% confidence interval [CI] or
19 interquartile range [IQR]) and categorical variables were presented as count (%). The

1 Mann-Whitney U test was used to compare continuous variables. The χ^2 test with Yates'
2 correction was used for 2x2 contingency data. Univariate Cox regression models identify the
3 significant risk factors of the primary and secondary outcomes. Hazard ratios (HRs) with
4 corresponding 95% CIs and P-values were reported. There was no imputation performed for
5 missing data. No blinding was performed for the predictor as the values were obtained from
6 the electronic health records automatically. Gender-specific stratification performance of
7 ventricular rate, PR segment, QRS duration, PT interval, QT interval, and QTc and their
8 dichotomized characteristics (optimal cut-offs) for the primary and secondary outcomes were
9 uncovered. The maximally selected rank statistics from the 'maxstat' R package is used to
10 determine the optimal cut-off point for continuous variables (13). The maximally selected
11 rank statistics approach is an outcome-oriented method providing a value of cutpoint that
12 correspond to the most significant relation with outcome. Adjusted cubic spline model of the
13 associations between ventricular rate, PR segment, QRS duration, PT interval, QT interval,
14 and QTc and adverse risks of the primary and secondary outcomes were provided. All
15 statistical tests were two-tailed and considered significant if p value<0.001. All statistical
16 analyses were performed using RStudio software (Version: 1.1.456) and Python (Version:
17 3.6).

18

19 **Results**

20 *Basic characteristics*

1 Over a median follow-up of 4.8 (1.9-9.0) years, a total of 2718 patients with heart failure
2 were enrolled (**Table 1**), of which 1302 (47.9%) were males. Female patients were
3 significantly older, exhibited significantly higher CHA2DS2-VASc score ($p<0.0001$) and
4 Charlson score ($p<0.0001$), albeit only with a very small absolute mean difference for the
5 latter. More female patients suffered from hypertension and ischaemic heart disease, as well
6 as using calcium channel blockers, statins and fibrates, and sodium-glucose cotransporter 2
7 inhibitors. The mean QRS duration was significantly longer in male patients.

8 *Gender-specific analysis of outcomes*

9 In total, the endpoint of all-cause mortality was met in 1972 (72.6%; 932 (71.6%) males)
10 patients, stroke in 339 (12.5%; 157 (12.1%) males) patients, and VA/SCD in 642 (23.6%;
11 339 (26.0%) males) patients. Kaplan-Meier curves of stroke, VA/SCD, CAD mortality and
12 all-cause mortality stratified by gender were presented in **Figure 2**. Males had lower adverse
13 risk of CAD mortality (HR: 0.91, 95% CI: [0.10, 0.99], P value=0.0375) and all-cause
14 mortality (HR: 0.82, 95% CI: [0.23, 0.96], P value=0.0161) than females, while males had
15 higher adverse risk of VA/SCD (HR>1, P value<0.05). Adjusted cubic spline models of
16 ventricular rate, PR segment, QRS duration, PT interval, QT interval, and QTc were
17 presented to uncover their associations with the adverse risks of all-cause mortality (**Figure**
18 **3**), CAD mortality (**Figure 4**), stroke (**Figure 6**), and VA/SCD (**Figure 7**).

19 *Gender-specific surface ECG markers of outcomes*

1 Results of the gender-specific univariate Cox analysis are summarized in Supplementary
2 Tables 2 and 3. A number of baseline comorbidities and medications were associated with the
3 outcomes to varying extents. QTc length was predictive of all clinical outcomes except stroke
4 in male patients. Higher heart rate and longer QTc were predictive of all-cause mortality in
5 both genders, while longer PR segment, QRS duration and QTc were predictive of
6 cardiovascular mortality in both genders. While longer PT interval and PR segment were
7 predictive of all-cause mortality in males, they were not predictive in females. Similar
8 discrepancy was observed in reverse for heart rate, which was predictive of cardiovascular
9 mortality in females but not males.

10 Multivariate gender-specific analysis of the prediction strengths of dichotomized ECGs
11 for stroke, VA/SCD, and mortality risks in males and females were summarized in **Table 2**;
12 all values were controlled for premorbid conditions and demographics that were associated
13 with the outcomes. A wider QRS and longer QTc were both associated with higher all-cause
14 and cardiovascular mortality, while a longer mean PT interval was predictive of all-cause
15 mortality in males but cardiovascular mortality in females. Notably, a wider QRS was
16 associated with the largest increase in risks of cardiovascular mortality amongst both genders,
17 while a longer QTc was associated with the largest increase in risks of all-cause mortality.
18 Interestingly, while a longer QTc was associated with drastically higher risk of stroke in
19 female patients, no significant association was found in males. The important prognostic
20 value of a long QTc was further reinforced by its association with VA/SCD in both genders.

1

2 **Discussion**

3 In this territory-wide retrospective cohort study, we identified several ECG
4 measurements which predicted adverse clinical outcomes in patients with heart failure. We
5 also showed significant differences in clinical outcomes between genders.

6 Previous studies have found a variety of QRS measurements, such as P wave indices,
7 QRS duration and QT intervals, to be predictive of mortality and adverse clinical outcomes in
8 patients with heart failure (14-16). Elevated heart rate has also been shown to be predictive of
9 mortality and adverse outcomes (17). These were corroborated by our findings.
10 Mechanistically, anomalies of these indices represent disrupted cardiac depolarization,
11 conduction and repolarization, in turn reflecting the severity of cardiac fibrosis and
12 remodeling (3). Notably, though insignificant in males, QTc was predictive of stroke in
13 women. While this might be explained as a reflection of the severity of heart failure and
14 general condition, it is also possible that interactions between cerebral and autonomic
15 dysfunctions, and electrophysiological and structural changes in heart failure may have
16 played a role (18). Overall, with ECG being more easily accessible than blood markers and
17 echocardiography in both in-patient and out-patient settings, our results reaffirm the value of
18 12-lead ECG in routine evaluation and prognostication of patients with heart failure. The
19 current study also builds on recent efforts of exploring automated ECG measurements for
20 prognostication in a variety of cardiovascular conditions (19, 20). Our study should serve as a

1 good basis on which further investigations and wider application of automated ECG
2 measurements may be based.

3 We showed important differences in clinical outcomes between sexes. Previous studies
4 have demonstrated sex differences in clinical outcomes (21), and the reasons underlying such
5 differences are multi-faceted, including genetic and aetiological differences, as well as
6 different responses to pharmacotherapy (22-24). Importantly, analyses have demonstrated
7 significant underrepresentation of women in clinical trials, which likely impacts the efficacy
8 of guideline-driven medical therapy in female patients with heart failure (25). Additionally,
9 findings regarding sex differences in mortality have been inconsistent. While the
10 Framingham Heart Study and Olmsted County study, both carried out in the US, found
11 significantly lower all-cause and cardiovascular mortality in female patients with heart failure
12 respectively (26, 27), Sakata et al have shown the opposite in a Japanese cohort (28).
13 Ceremers et al, on the other hand, have found neutral results in a Nordic cohort. Our results,
14 having been derived from Asian patients, corroborated with the findings of Sakata et al.
15 These pointed to a high likelihood of race-specific outcomes, as well as limited racial
16 diversity and representation in heart failure trials. Particularly pertinent to the current study,
17 this was supported by Mentz et al who showed, aside from variable representation of Asians
18 in heart failure trials which limits their generalizability, considerable differences in disease
19 profile, therapy, and outcomes among Asians as compared to their Caucasian counterparts

1 (29). As such, further studies focusing on Asian patients with heart failure are warranted and
2 optimize their treatments and prognostication specifically.

3 *Limitations*

4 This study has several limitations. First, it is based on a territory-wide cohort from a
5 single city in Hong Kong. This may limit the generalizability of our results to other
6 populations. Second, due to the coding in CDARS and lack of echocardiographic data, the
7 included cohort of patients with heart failure is heterogeneous, with a mix of different
8 aetiologies and phenotypes. However, as a territory-wide study, our results closely reflect
9 real-world practice and may still allow the general physician treating patients with heart
10 failure to better assess them. Third, the accuracy of data recorded in CDARS cannot be
11 assessed. Nonetheless, all the data was inputted by clinical staffs, and none of the authors
12 were involved in data input. Data from CDARS have also been used in a number of
13 peer-reviewed publications by our team and others. As such, we believe that CDARS remains
14 a reasonably reliable source of territory-wide data.

15

16 **Conclusion**

17 Outcomes of patients admitted for heart failure were significantly different between genders,
18 and different ECG measurements significantly and independently predicted clinical outcomes
19 in either gender.

1

2

3 **Conflicts of Interest**

4 None.

5

6 **Data availability**

7 The data that support the findings of this study are available from the corresponding author

8 upon reasonable request.

9

10

1 **References**

2

3 1. Groenewegen A, Rutten FH, Mosterd A, Hoes AW. Epidemiology of heart failure.

4 European Journal of Heart Failure. 2020;22(8):1342-56.

5 2. Karaye KM, Sani MU. Electrocardiographic abnormalities in patients with heart failure.

6 Cardiovasc J Afr. 2008;19(1):22-5.

7 3. Coronel R, Wilders R, Verkerk AO, Wiegerinck RF, Benoist D, Bernus O.

8 Electrophysiological changes in heart failure and their implications for arrhythmogenesis.

9 Biochimica et Biophysica Acta (BBA) - Molecular Basis of Disease. 2013;1832(12):2432-41.

10 4. Urbich M, Globe G, Pantiri K, Heisen M, Bennison C, Wirtz HS, et al. A Systematic

11 Review of Medical Costs Associated with Heart Failure in the USA (2014–2020).

12 PharmacoEconomics. 2020;38(11):1219-36.

13 5. Ponikowski P, Voors AA, Anker SD, Bueno H, Cleland JGF, Coats AJS, et al. 2016 ESC

14 Guidelines for the diagnosis and treatment of acute and chronic heart failure: The Task Force

15 for the diagnosis and treatment of acute and chronic heart failure of the European Society of

16 Cardiology (ESC) Developed with the special contribution of the Heart Failure Association

17 (HFA) of the ESC. Eur Heart J. 2016;37(27):2129-200.

18 6. Chan JSK, Tse G, Zhao H, Luo XX, Jin CN, Kam K, et al. Echocardiography update for

19 primary care physicians: a review. Hong Kong Med J. 2020;26(1):44-55.

20 7. Kelly J, Kelleher K. The electrocardiogram in heart failure. Age Ageing.

21 2000;29(3):203-6.

22 8. Dzudie A, Milo O, Edwards C, Cotter G, Davison BA, Damasceno A, et al. Prognostic

- 1 significance of ECG abnormalities for mortality risk in acute heart failure: insight from the
- 2 Sub-Saharan Africa Survey of Heart Failure (THESUS-HF). *J Card Fail.* 2014;20(1):45-52.
- 3 9. Hnatkova K, Smetana P, Toman O, Schmidt G, Malik M. Sex and race differences in
- 4 QRS duration. *EP Europace.* 2016;18(12):1842-9.
- 5 10. Lee S, Liu T, Zhou J, Zhang Q, Wong WT, Tse G. Predictions of diabetes complications
- 6 and mortality using hba1c variability: a 10-year observational cohort study. *Acta Diabetol.*
- 7 2020.
- 8 11. Ju C, Lai RWC, Li KHC, Hung JKF, Lai JCL, Ho J, et al. Comparative cardiovascular
- 9 risk in users versus non-users of xanthine oxidase inhibitors and febuxostat versus allopurinol
- 10 users. *Rheumatology (Oxford).* 2020;59(9):2340-9.
- 11 12. Zhou J, Wang X, Lee S, Wu WKK, Cheung BMY, Zhang Q, et al. Proton pump inhibitor
- 12 or famotidine use and severe COVID-19 disease: a propensity score-matched territory-wide
- 13 study. *Gut.* 2020.
- 14 13. Budczies J, Klauschen F, Sinn BV, Gyorffy B, Schmitt WD, Darb-Esfahani S, et al.
- 15 Cutoff Finder: a comprehensive and straightforward Web application enabling rapid
- 16 biomarker cutoff optimization. *PLoS One.* 2012;7(12):e51862.
- 17 14. He J, Tse G, Korantzopoulos P, Letsas KP, Ali-Hasan-Al-Saegh S, Kamel H, et al.
- 18 P-Wave Indices and Risk of Ischemic Stroke: A Systematic Review and Meta-Analysis.
- 19 *Stroke.* 2017;48(8):2066-72.
- 20 15. Alonso A, Chen L. PR interval, P-wave duration, and mortality: new insights, additional
- 21 questions. *Heart Rhythm.* 2014;11(1):99-100.

- 1 16. Brooksby P, Batin PD, Nolan J, Lindsay SJ, Andrews R, Mullen M, et al. The
2 relationship between QT intervals and mortality in ambulant patients with chronic heart
3 failure. The united kingdom heart failure evaluation and assessment of risk trial
4 (UK-HEART). *Eur Heart J*. 1999;20(18):1335-41.
- 5 17. Docherty KF, Shen L, Castagno D, Petrie MC, Abraham WT, Bohm M, et al.
6 Relationship between heart rate and outcomes in patients in sinus rhythm or atrial fibrillation
7 with heart failure and reduced ejection fraction. *Eur J Heart Fail*. 2020;22(3):528-38.
- 8 18. Scherbakov N, Doehner W. Heart-brain Interactions in Heart Failure. *Card Fail Rev*.
9 2018;4(2):87-91.
- 10 19. Tse G, Lee S, Li A, Chang D, Li G, Zhou J, et al. Automated Electrocardiogram Analysis
11 Identifies Novel Predictors of Ventricular Arrhythmias in Brugada Syndrome. *Frontiers in*
12 *Cardiovascular Medicine*. 2021;7:399.
- 13 20. Tse G, Lakhani I, Zhou J, Li KHC, Lee S, Liu Y, et al. P-Wave Area Predicts New Onset
14 Atrial Fibrillation in Mitral Stenosis: A Machine Learning Approach. *Front Bioeng*
15 *Biotechnol*. 2020;8:479.
- 16 21. Lam CSP, Arnott C, Beale AL, Chandramouli C, Hilfiker-Kleiner D, Kaye DM, et al. Sex
17 differences in heart failure. *European Heart Journal*. 2019;40(47):3859-68c.
- 18 22. Azad N, Kathiravelu A, Minoosepeher S, Hebert P, Fergusson D. Gender differences in
19 the etiology of heart failure: A systematic review. *J Geriatr Cardiol*. 2011;8(1):15-23.
- 20 23. Cesaroni G, Mureddu GF, Agabiti N, Mayer F, Stafoggia M, Forastiere F, et al. Sex
21 differences in factors associated with heart failure and diastolic left ventricular dysfunction: a

- 1 cross-sectional population-based study. BMC Public Health. 2021;21(1):415.
- 2 24. Stienen S, Ferreira JP, Kobayashi M, Preud'homme G, Dobre D, Machu J-L, et al. Sex
3 differences in circulating proteins in heart failure with preserved ejection fraction. Biology of
4 Sex Differences. 2020;11(1):47.
- 5 25. Aimo A, Vergaro G, Barison A, Maffei S, Borrelli C, Morrone D, et al. Sex-related
6 differences in chronic heart failure. Int J Cardiol. 2018;255:145-51.
- 7 26. Gerber Y, Weston SA, Redfield MM, Chamberlain AM, Manemann SM, Jiang R, et al. A
8 contemporary appraisal of the heart failure epidemic in Olmsted County, Minnesota, 2000 to
9 2010. JAMA Intern Med. 2015;175(6):996-1004.
- 10 27. Levy D, Kenchaiah S, Larson MG, Benjamin EJ, Kupka MJ, Ho KK, et al. Long-term
11 trends in the incidence of and survival with heart failure. N Engl J Med.
12 2002;347(18):1397-402.
- 13 28. Sakata Y, Miyata S, Nochioka K, Miura M, Shiroto T, Shimokawa H. Sex Differences in
14 Patients With Chronic Heart Failure With Reference to Left Ventricular Ejection Fraction: A
15 Report From the CHART-2 Study. Gender and the Genome. 2018;2:27-42.
- 16 29. Mentz RJ, Roessig L, Greenberg BH, Sato N, Shinagawa K, Yeo D, et al. Heart Failure
17 Clinical Trials in East and Southeast Asia: Understanding the Importance and Defining the
18 Next Steps. JACC: Heart Failure. 2016;4(6):419-27.
- 19
20

1 **Table 1. Gender-specific baseline and clinical characteristics of study population.**

2 * for $p \leq 0.05$, ** for $p \leq 0.01$, *** for $p \leq 0.001$.

Characteristics	All patients (N=2718) Median (IQR);N or Count(%)	Males (N=1302) Median (IQR);N or Count(%)	Females (N=1416) Median (IQR);N or Count(%)	P value
<i>Outcomes</i>	-	-	-	-
All-cause mortality	1972(72.55%)	932(71.58%)	1040(73.44%)	0.6859
Cardiovascular mortality	563(20.71%)	250(19.20%)	313(22.10%)	0.1425
Stroke	339(12.47%)	157(12.05%)	182(12.85%)	0.6206
VA/SCD	642(23.62%)	339(26.03%)	303(21.39%)	0.0285*
<i>Demographics</i>				
Baseline age, years	77.36(66.94-84.3);n=2718	74.52(63.59-81.61);n=1302	80.01(71.16-86.6);n=1416	<0.0001***
CHA-DS-VASc Score	4.0(3.0-5.0);n=2718	3.0(2.0-4.0);n=1302	5.0(4.0-6.0);n=1416	<0.0001***
Charlson score	5.0(4.0-6.0);n=2718	5.0(3.0-6.0);n=1302	5.0(4.0-7.0);n=1416	<0.0001***
<i>Past comorbidities</i>				
Diabetes without chronic complication	790(29.06%)	364(27.95%)	426(30.08%)	0.3872
Diabetes with chronic complication	256(9.41%)	138(10.59%)	118(8.33%)	0.0764
Renal diseases	345(12.69%)	161(12.36%)	184(12.99%)	0.7071
Systemic embolism	7(0.25%)	3(0.23%)	4(0.28%)	0.9109
Hypertension	1253(46.10%)	546(41.93%)	707(49.92%)	0.0122*
Myocardial infarction	353(12.98%)	220(16.89%)	133(9.39%)	<0.0001***
Chronic renal failure	72(2.64%)	35(2.68%)	37(2.61%)	0.9994
Liver diseases	15(0.55%)	7(0.53%)	8(0.56%)	0.8701
Ventricular tachycardia/fibrillation	135(4.96%)	72(5.52%)	63(4.44%)	0.2525

Dementia and Alzheimer	14(0.51%)	4(0.30%)	10(0.70%)	0.2396
COPD	386(14.20%)	206(15.82%)	180(12.71%)	0.0505
IHD	1012(37.23%)	544(41.78%)	468(33.05%)	0.0017**
PVD	66(2.42%)	25(1.92%)	41(2.89%)	0.1372
Stroke/TIA	365(13.42%)	155(11.90%)	210(14.83%)	0.0577
Gastrointestinal bleeding	336(12.36%)	159(12.21%)	177(12.50%)	0.886
Cancer	162(5.96%)	81(6.22%)	81(5.72%)	0.6613
Obesity	46(1.69%)	17(1.30%)	29(2.04%)	0.1851
Medications				
ACEI	1259(46.32%)	635(48.77%)	624(44.06%)	0.1462
ARB	257(9.45%)	109(8.37%)	148(10.45%)	0.1053
Calcium channel blockers	1232(45.32%)	543(41.70%)	689(48.65%)	0.0278*
Beta blockers	1334(49.08%)	626(48.07%)	708(50.00%)	0.5814
Diuretics	1092(40.17%)	502(38.55%)	590(41.66%)	0.2964
Nitrates	749(27.55%)	368(28.26%)	381(26.90%)	0.579
Statins and fibrates	829(30.50%)	447(34.33%)	382(26.97%)	0.0028**
Anticoagulants	503(18.50%)	258(19.81%)	245(17.30%)	0.1774
Antiplatelets	1117(41.09%)	555(42.62%)	562(39.68%)	0.3327
Sodium-glucose cotransporter 2 inhibitors	44(1.61%)	29(2.22%)	15(1.05%)	0.0265*
Dipeptidyl peptidase-4 inhibitors	207(7.61%)	112(8.60%)	95(6.70%)	0.099
Alpha-glucosidase inhibitors	69(2.53%)	31(2.38%)	38(2.68%)	0.7139
ECG measurements				
Mean ventrate	77.0(67.0-90.0);n=2717	77.0(67.0-90.0);n=1302	77.0(66.0-90.0);n=1415	0.7873
Mean PT interval	176.0(157.0-199.0);n=2717	176.0(158.0-199.0);n=1302	175.0(157.0-199.0);n=1415	0.6441
Mean PR segment	79.0(63.0-99.0);n=2717	79.0(64.0-99.0);n=1302	78.0(62.0-98.5);n=1415	0.3488

Mean QRS duration	91.0(82.0-108.0);n=2717	96.0(86.0-116.0);n=1302	88.0(80.0-101.0);n=1415	<0.0001***
Mean QT interval	393.0(360.0-428.0);n=2717	391.0(360.0-424.0);n=1302	396.0(360.0-432.0);n=1415	0.0739
Mean QTc	444.0(420.0-472.0);n=2717	443.0(418.0-473.0);n=1302	446.0(423.0-472.0);n=1415	0.1035

1 ACEI, angiotensin converting enzyme inhibitor. ARB, angiotensinogen II receptor blocker. COPD, chronic obstructive pulmonary disease. ECG,
2 electrocardiographic. IHD, ischaemic heart disease. IQR, interquartile range. PVD, peripheral vascular disease. TIA, transient ischaemic attack.
3
4

1 **Table 2. Gender-specific multivariate Cox analysis of the prediction strengths of dichotomized electrocardiographic markers.**

2 * for $p \leq 0.05$, ** for $p \leq 0.01$, *** for $p \leq 0.001$

Males			
Dichotomized ECG measurements	All-cause mortality HR [95% CI];P value	Dichotomized ECG measurements	Cardiovascular mortality HR [95% CI];P value
Mean heart rate>95 BPM	1.15[1.00-1.32];0.0455*	Mean heart rate>103 BPM	1.14[0.87-1.50];0.3297
Mean PT interval >187 ms	1.18[1.03-1.35];0.0136*	Mean PT interval >185 ms	1.28[1.00-1.65];0.0545
Mean PR segment>107 ms	1.04[0.90-1.19];0.6163	Mean PR segment>89 ms	1.21[0.92-1.59];0.1805
Mean QRS duration>97 ms	1.34[1.18-1.53];<0.0001***	Mean QRS duration>101 ms	1.59[1.24-2.05];0.0003***
Mean QT interval>435 ms	1.32[1.16-1.50];<0.0001***	Mean QT interval>395 ms	1.46[1.14-1.88];0.0029**
Mean QTc>428 ms	1.52[1.33-1.74];<0.0001***	Mean QTc>428 ms	1.53[1.18-1.99];0.0012**
Dichotomized ECG measurements	Stroke HR [95% CI];P value	Dichotomized ECG measurements	VA/SCD HR [95% CI];P value
Mean heart rate>82 BPM	1.00[0.70-1.41];0.9794	Mean heart rate>93 BPM	0.92[0.72-1.18];0.5263
Mean PT interval >164 ms	0.94[0.67-1.30];0.7009	Mean PT interval >224 ms	0.94[0.75-1.19];0.6281
Mean PR segment>59 ms	1.07[0.76-1.50];0.7156	Mean PR segment>115 ms	1.05[0.82-1.33];0.7145
Mean QRS duration>90 ms	0.75[0.54-1.03];0.0750	Mean QRS duration>100 ms	1.12[0.90-1.40];0.3171
Mean QT interval>370 ms	0.93[0.67-1.27];0.6367	Mean QT interval>408 ms	1.25[1.00-1.57];0.0468*
Mean QTc>484 ms	0.79[0.54-1.15];0.2124	Mean QTc>450 ms	1.34[1.06-1.70];0.0149*
Female			
Dichotomized ECG measurements	All-cause mortality HR [95% CI];P value	Dichotomized ECG measurements	Cardiovascular mortality HR [95% CI];P value
Mean heart rate>92 BPM	1.13[0.99-1.28];0.0678	Mean heart rate>106 BPM	1.22[0.96-1.54];0.1084
Mean PT interval >191 ms	1.09[0.96-1.23];0.1766	Mean PT interval >216 ms	1.28[1.02-1.60];0.0296*
Mean PR segment>54 ms	0.79[0.67-0.93];0.0053**	Mean PR segment>119 ms	0.84[0.62-1.15];0.2785

Mean QRS duration>87 ms	1.17[1.03-1.32];0.0149*	Mean QRS duration>96 ms	1.45[1.16-1.81];0.0011**
Mean QT interval>429 ms	1.06[0.94-1.20];0.3206	Mean QT interval>330 ms	1.08[0.87-1.36];0.4801
Mean QTc>443 ms	1.40[1.24-1.58];<0.0001***	Mean QTc>415 ms	1.37[1.10-1.71];0.0057**
Dichotomized ECG measurements	Stroke HR [95% CI];P value	Dichotomized ECG measurements	VA/SCD HR [95% CI];P value
Mean heart rate>61 BPM	1.13[0.83-1.54];0.4264	Mean heart rate>83 BPM	0.98[0.78-1.25];0.8981
Mean PT interval >227 ms	0.97[0.72-1.30];0.8388	Mean PT interval >156 ms	1.07[0.85-1.35];0.5606
Mean PR segment>57 ms	1.66[0.99-2.78];0.0527	Mean PR segment>54 ms	0.72[0.54-0.97];0.0329*
Mean QRS duration>98 ms	1.24[0.93-1.67];0.1462	Mean QRS duration>85 ms	1.20[0.95-1.51];0.1226
Mean QT interval>440 ms	1.08[0.81-1.45];0.6023	Mean QT interval>397 ms	1.26[1.00-1.59];0.0525
Mean QTc>443 ms	1.47[1.10-1.97];0.0101*	Mean QTc>447 ms	1.72[1.36-2.17];<0.0001***

1 CI, confidence interval. ECG, electrocardiographic. HR, hazard ratio. VA/SCD, ventricular arrhythmia and sudden cardiac death.

1 **Figure legend**

2 Figure 1. Study flowchart.

3 Figure 2. Kaplan-Meier curves of stroke, VA/SCD, CAD mortality and all-cause mortality stratified by
4 gender.

5 Figure 3. Adjusted cubic spline model of the associations between ventricular rate, PR segment, QRS
6 duration, PT interval, QT interval, and QTc and adverse risks of all-cause mortality.

7 Figure 4. Adjusted cubic spline model of the associations between ventricular rate, PR segment, QRS
8 duration, PT interval, QT interval, and QTc and adverse risks of CAD mortality.

9 Figure 5. Adjusted cubic spline model of the associations between ventricular rate, PR segment, QRS
10 duration, PT interval, QT interval, and QTc and adverse risks of stroke.

11 Figure 6. Adjusted cubic spline model of the associations between ventricular rate, PR segment, QRS
12 duration, PT interval, QT interval, and QTc and adverse risks of VA/SCD.

13

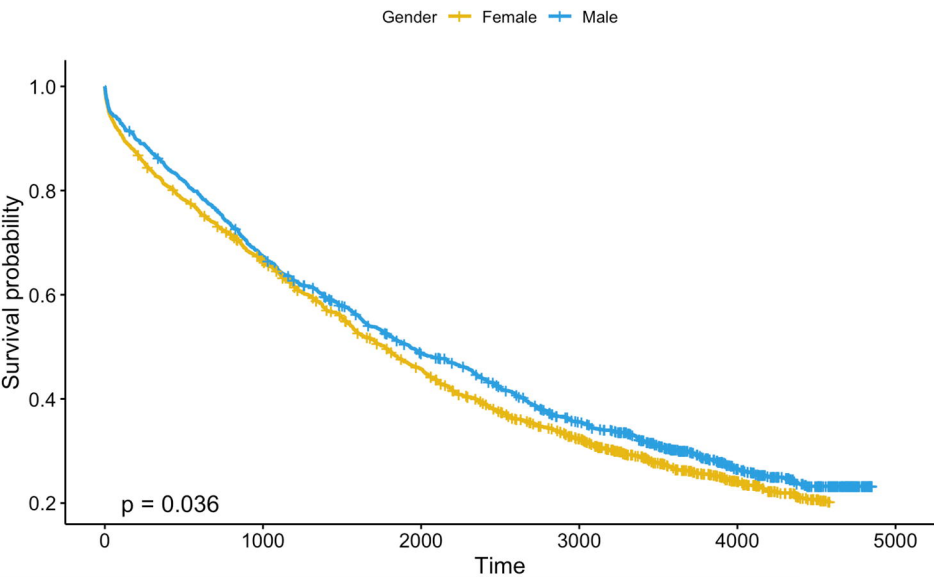
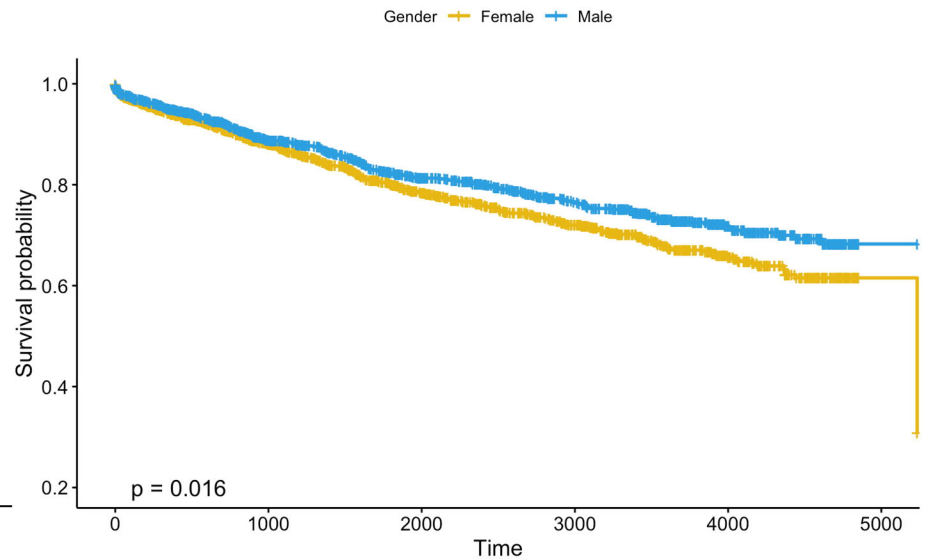
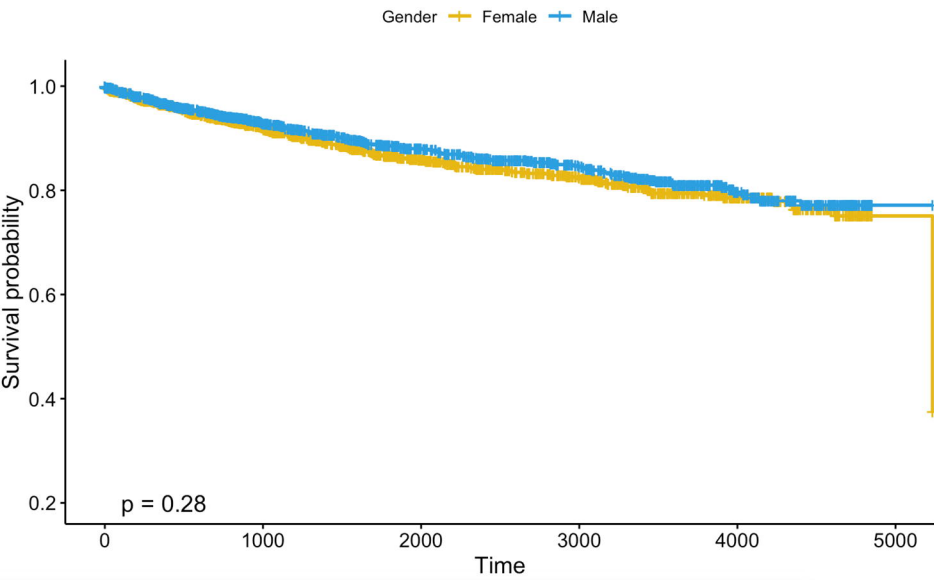
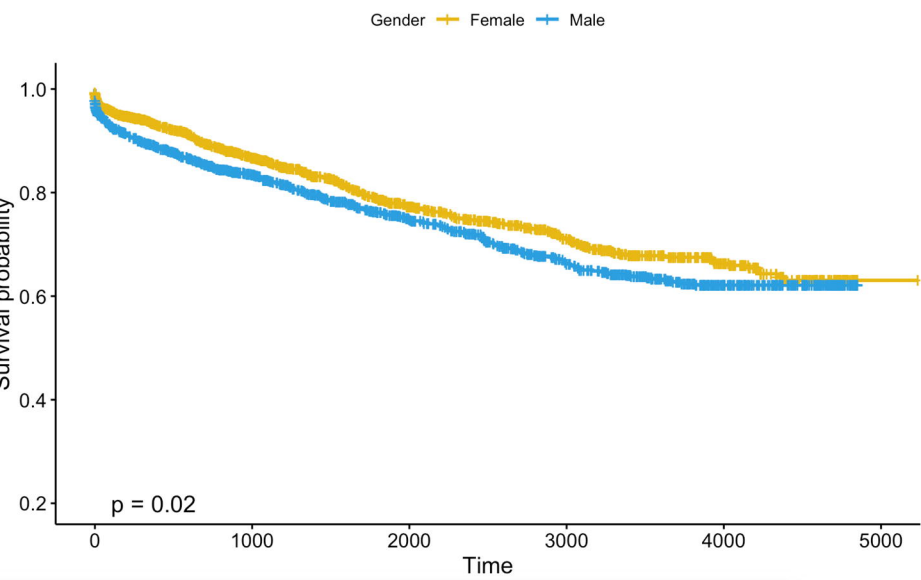
2930 hospitalized patients followed up from
January 1st, 2000 to December 31st, 2019

Excluded

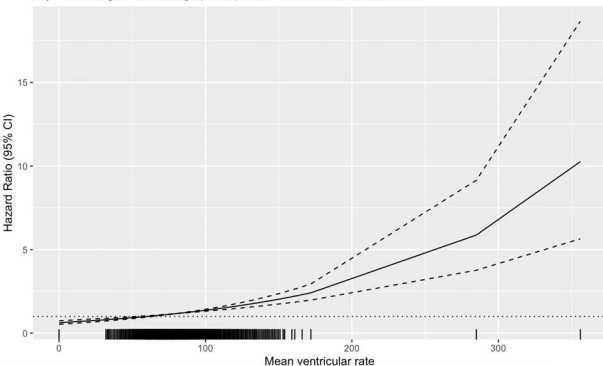
- 1) 62 patients without 12-leads ECG measurements
- 2) 150 patients with prior AF

Study cohort (N=2718):

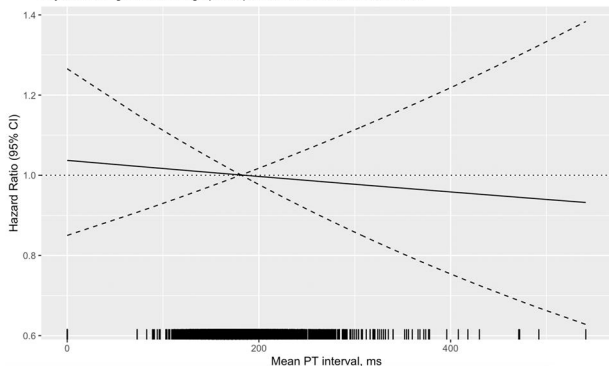
- 1972 patients (72.6%) with all-cause mortality;
- 563 patients (20.7%) with cardiovascular mortality;
- 1150 patients (42.31%) developed new onset AF;
- 339 patients (12.47%) developed stroke;
- 642 patients (23.62%) developed VA/SCD.

All-cause mortality**CAD mortality****Stroke****VA/SCD**

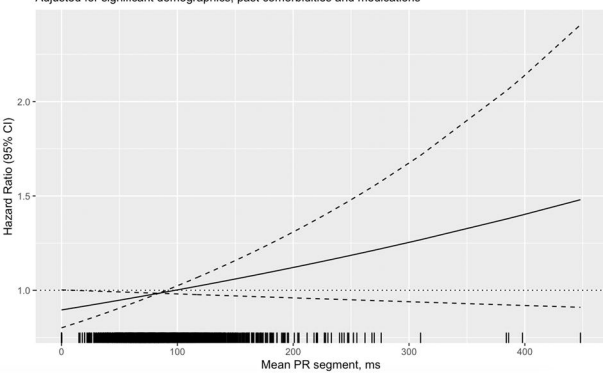
All-cause mortality hazard ratio as a function of mean ventricular rate
Adjusted for significant demographics, past comorbidities and medications



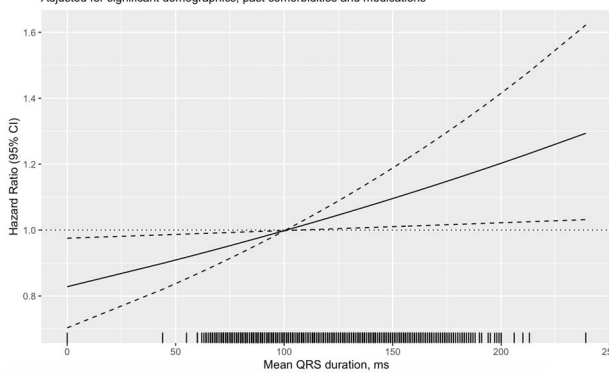
All-cause mortality hazard ratio as a function of mean PT interval
Adjusted for significant demographics, past comorbidities and medications



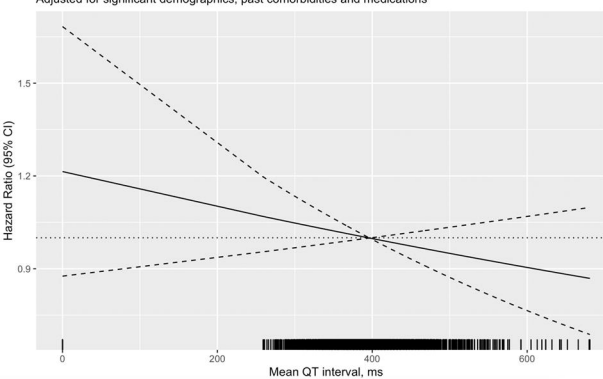
All-cause mortality hazard ratio as a function of mean PR segment
Adjusted for significant demographics, past comorbidities and medications



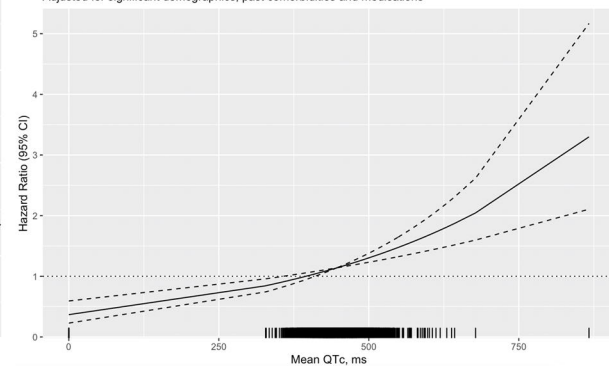
All-cause mortality hazard ratio as a function of mean QRS duration
Adjusted for significant demographics, past comorbidities and medications



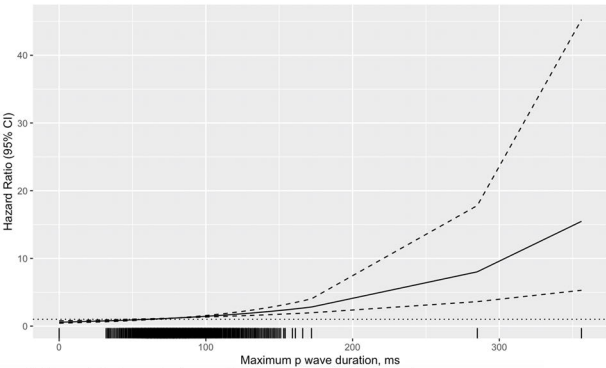
All-cause mortality hazard ratio as a function of mean QT interval
Adjusted for significant demographics, past comorbidities and medications



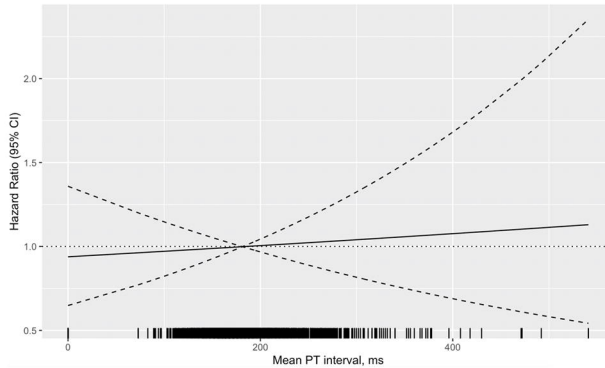
All-cause mortality hazard ratio as a function of mean QTc
Adjusted for significant demographics, past comorbidities and medications



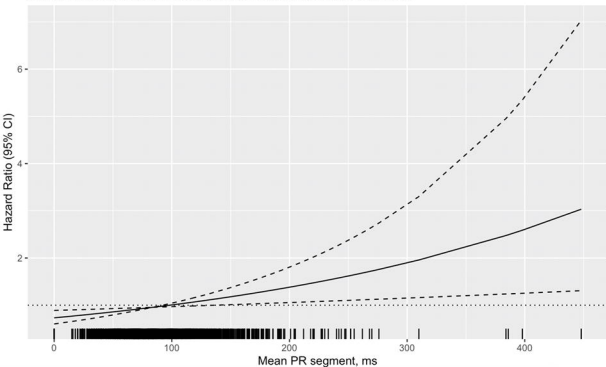
CAD mortality hazard ratio as a function of mean ventricular rate
Adjusted for significant demographics, past comorbidities and medications



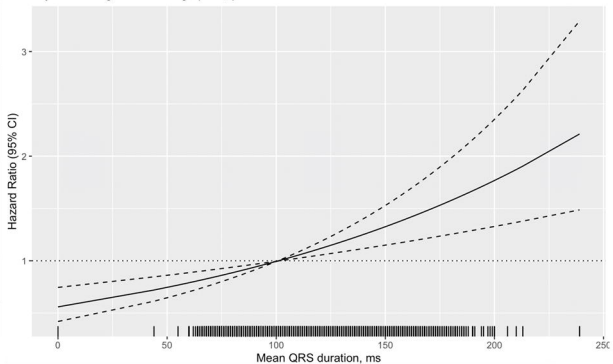
CAD mortality hazard ratio as a function of mean PT interval
Adjusted for significant demographics, past comorbidities and medications



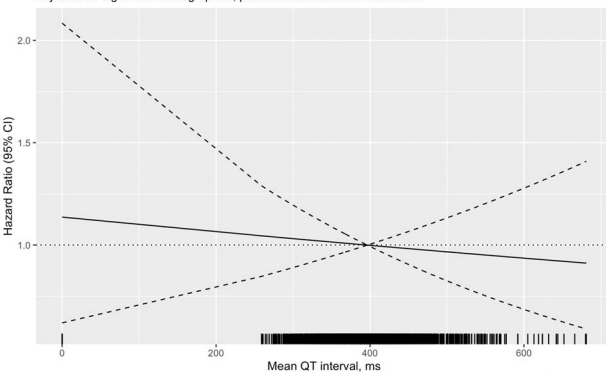
CAD mortality hazard ratio as a function of mean PR segment
Adjusted for significant demographics, past comorbidities and medications



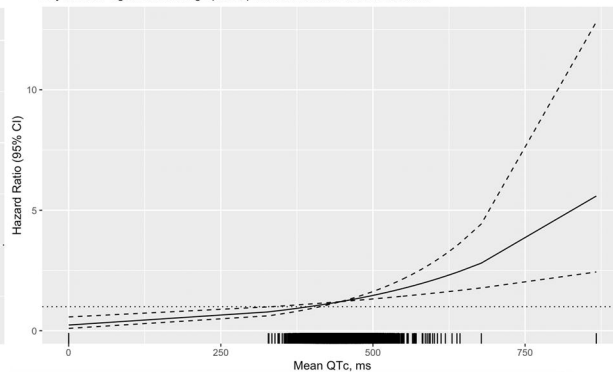
CAD mortality hazard ratio as a function of mean QRS duration
Adjusted for significant demographics, past comorbidities and medications



CAD mortality hazard ratio as a function of mean QT interval
Adjusted for significant demographics, past comorbidities and medications

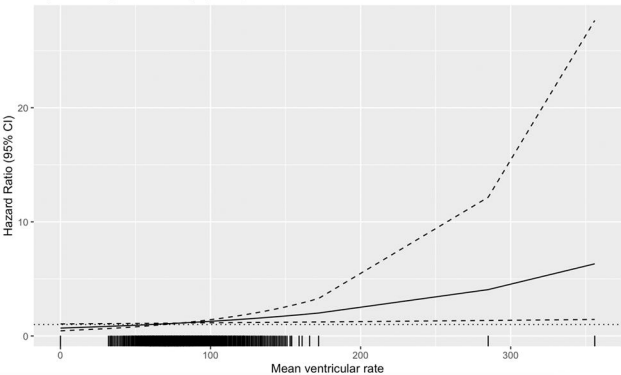


CAD mortality hazard ratio as a function of mean QTc
Adjusted for significant demographics, past comorbidities and medications



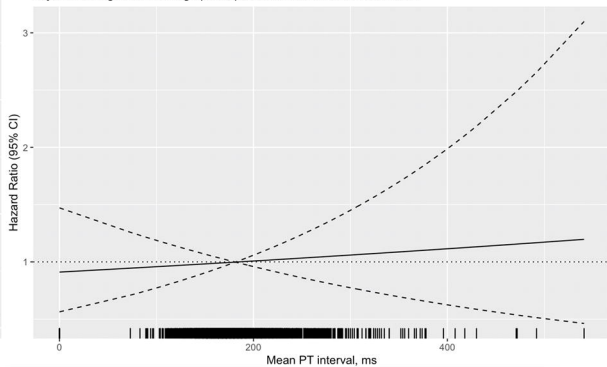
Stroke hazard ratio as a function of mean ventricular rate

Adjusted for significant demographics, past comorbidities and medications



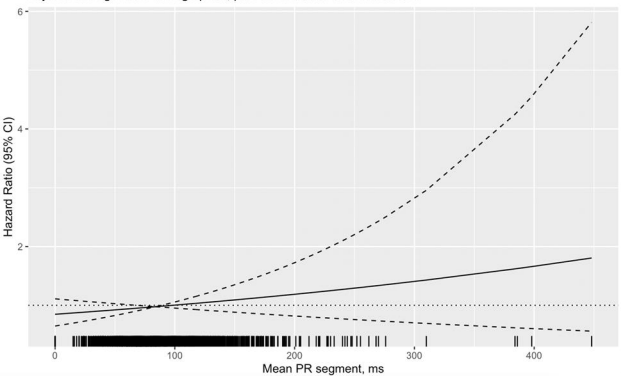
Stroke hazard ratio as a function of mean PT interval

Adjusted for significant demographics, past comorbidities and medications



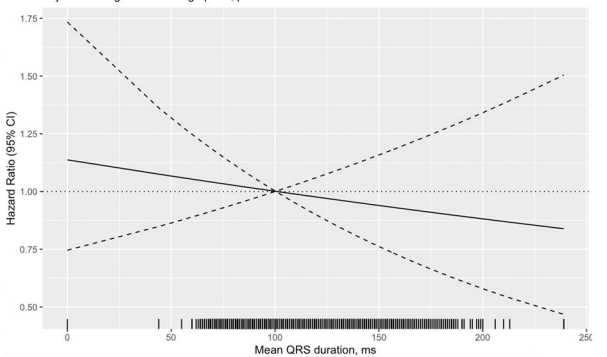
Stroke hazard ratio as a function of mean PR segment

Adjusted for significant demographics, past comorbidities and medications



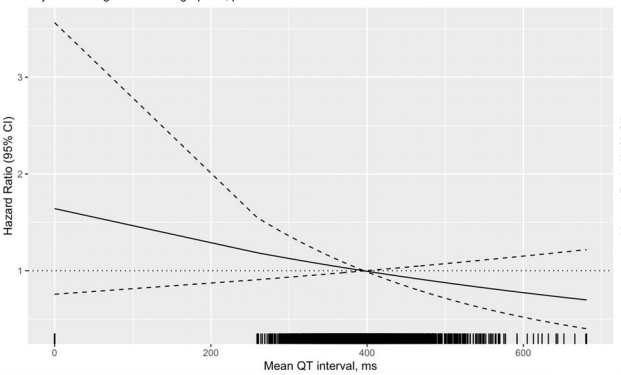
Stroke hazard ratio as a function of mean QRS duration

Adjusted for significant demographics, past comorbidities and medications



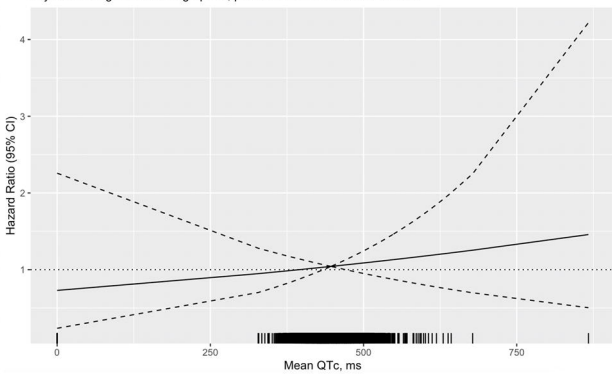
Stroke hazard ratio as a function of mean QT interval

Adjusted for significant demographics, past comorbidities and medications



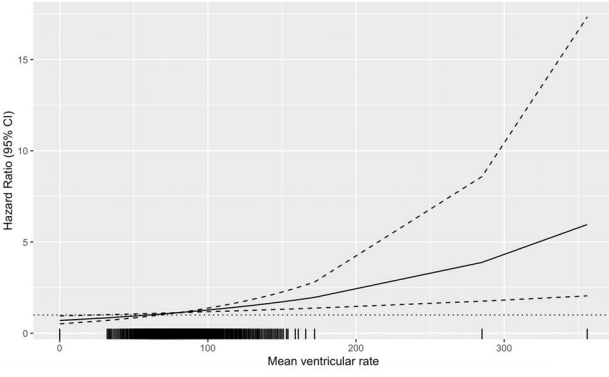
Stroke hazard ratio as a function of mean QTc

Adjusted for significant demographics, past comorbidities and medications



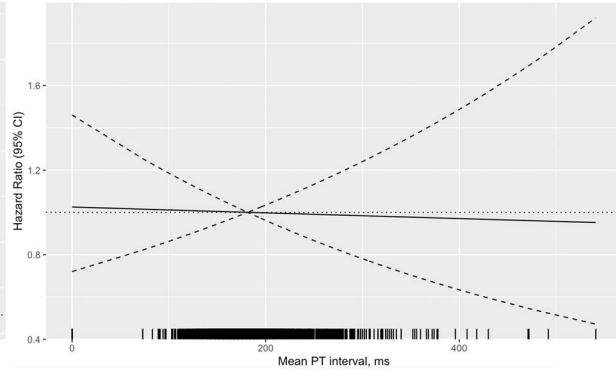
VA/SCD hazard ratio as a function of mean ventricular rate

Adjusted for significant demographics, past comorbidities and medications



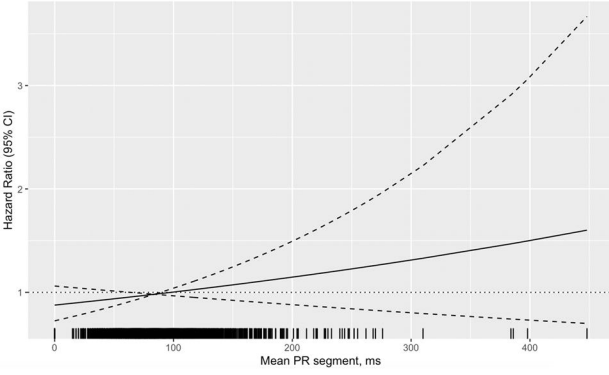
VA/SCD hazard ratio as a function of mean PT interval

Adjusted for significant demographics, past comorbidities and medications



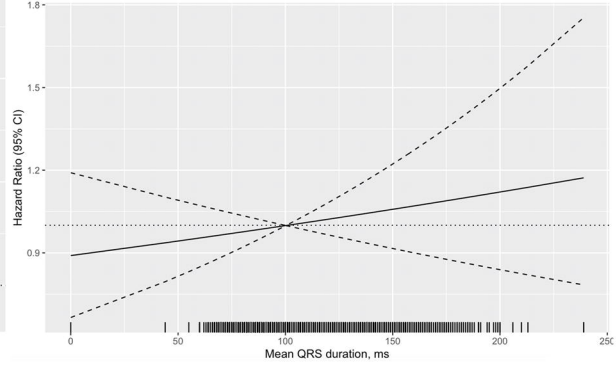
VA/SCD hazard ratio as a function of mean PR segment

Adjusted for significant demographics, past comorbidities and medications



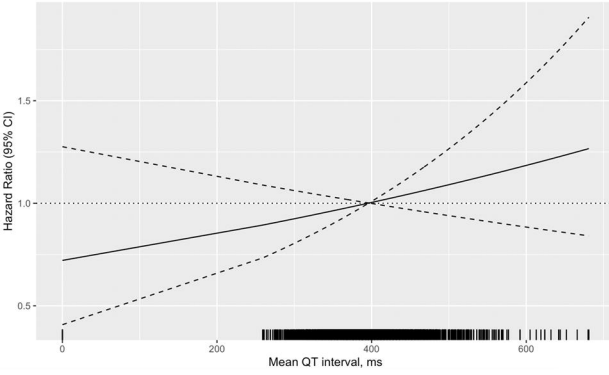
VA/SCD hazard ratio as a function of mean QRS duration

Adjusted for significant demographics, past comorbidities and medications



VA/SCD hazard ratio as a function of mean QT interval

Adjusted for significant demographics, past comorbidities and medications



VA/SCD hazard ratio as a function of mean QTc

Adjusted for significant demographics, past comorbidities and medications

