

1 Title Page

2

3 **A functional *TGFB1* polymorphism in the donor associates with long-term graft survival after**  
4 **kidney transplantation.**

5 Felix Poppelaars<sup>1</sup>, Mariana Gaya da Costa<sup>1,\*</sup>, Bernardo Faria<sup>1,2,\*</sup>, Siawosh K. Eskandari<sup>1</sup>, Jeffrey  
6 Damman<sup>3</sup>, Marc A. Seelen<sup>1</sup>

7

8 \* Shared second author

9 <sup>1</sup> Department of Internal Medicine, Division of Nephrology, University Medical Center Groningen,  
10 University of Groningen, Groningen, The Netherlands.

11 <sup>2</sup> Nephrology and Infectious Disease R&D Group, INEB, Institute of Investigation and Innovation in  
12 Health (i3S), University of Porto, Porto, Portugal.

13 <sup>3</sup> Department of Pathology, Erasmus Medical Center, University Medical Center, Rotterdam, The  
14 Netherlands.

15

16

17 Running head: *TGFB1* SNP associates with graft loss.

18 Keywords: TGF-beta, kidney transplantation, nephrology, genetics.

19

20

21 Word Title: 15 words

22 Running head: 32

23 Word count abstract 250 words

24 Word count body: 2.939 words

25 Number of pages: 33

26 Number of figures: 3

27 Number of tables: 3

28 References: 47

29

**NOTE: This preprint reports new research that has not been certified by peer review and should not be used to guide clinical practice.**

1 **Address for Correspondence:**

2 Felix Poppelaars, M.D./Ph.D.

3 University Medical Center Groningen

4 Department of internal medicine, Division of Nephrology, AA53

5 Postbus 196

6 9700 AD Groningen, The Netherlands

7 Phone: +31 50 3610544

8 Fax: +31 50 3619320

9 E-Mail: [f.poppelaars@umcg.nl](mailto:f.poppelaars@umcg.nl)

10

1    **Abbreviations**

2	BPAR	Biopsy-proven acute rejection
3	CIT	Cold ischemia time
4	DBD	Donation after circulatory death
5	DCD	Donation after brain death
6	DGF	Delayed graft function
7	ESKD	End-stage kidney disease
8	HLA	Human leukocyte antigen
9	HR	Hazard ratio
10	PRA	Panel-reactive antibody
11	SMAD	Small mothers against decapentaplegic homologue
12	SNP	Single-nucleotide polymorphism
13	TGF- $\beta$	Transforming growth factor beta
14	TGF- $\beta$ 1	Transforming growth factor beta 1
15	<i>TGFB1</i>	Transforming growth factor beta 1 gene
16	WIT	Warm ischemia time
17		

1 **Abstract**

2

3 **Introduction**

4 Improvement of long-term outcomes in kidney transplantation remains one of the most pressing  
5 challenges, yet drug development is stagnating. Human genetics offers an opportunity for much-needed  
6 target validation in transplantation. Conflicting data exist about the effect of transforming growth factor-  
7 beta 1 (TGF- $\beta$ 1) on kidney transplant survival since TGF- $\beta$ 1 has pro-fibrotic and protective effects. We  
8 investigated the impact of a recently discovered functional *TGFB1* polymorphism on kidney graft survival.

9 **Methods**

10 We performed an observational cohort study analyzing recipient and donor DNA in 1,271 kidney  
11 transplant-pairs from the University Medical Center Groningen in The Netherlands and associated a  
12 low-producing *TGFB1* polymorphism (rs1800472-C>T) with 5, 10, and 15-year death-censored kidney  
13 graft survival.

14 **Results**

15 Donor genotype frequencies of rs1800472 in *TGFB1* differed significantly between patients with and  
16 without graft loss ( $P=0.014$ ). Additionally, the low-producing *TGFB1* polymorphism in the donor was  
17 associated with an increased risk of graft loss following kidney transplantation (HR 2.12 for the T-allele;  
18 95%-CI 1.18–3.79;  $P=0.012$ ). The incidence of graft loss within 15 years of follow-up was 16.4% in the  
19 CC-genotype group and 31.6% in the CT-genotype group. After adjustment for transplant-related  
20 covariates, the association between the *TGFB1* polymorphism in the donor and graft loss remained  
21 significant. In contrast, there was no association between the *TGFB1* polymorphism in the recipient and  
22 graft loss.

23 **Conclusion**

24 Kidney allografts possessing a low-producing *TGFB1* polymorphism have a higher risk of late graft loss.  
25 Our study adds to a growing body of evidence that TGF- $\beta$ 1 is beneficial, rather than harmful, for kidney  
26 transplant survival.

27

## 1 Introduction

2 Short-term outcomes following kidney transplantation have dramatically improved in the past 25 years,  
3 adding over one million life-years to patients in the United States alone. Nonetheless, improving the  
4 long-term transplant outcomes remains a crucial challenge.(1) The alloimmune response is recognized  
5 as a major contributor to late kidney transplant failure.(2) Furthermore, cytokines play a pivotal role in  
6 orchestrating the immune response.(3) Understanding the contribution of cytokines to donor-recipient  
7 incompatibility in kidney transplantation, therefore, is crucial as it can lead to the development of novel  
8 treatment strategies. Transplantation is a unique situation from a genetic and an immunological  
9 perspective, as two genomes are brought together. Genetic differences between the donor and recipient  
10 subsequently lead to immunological injury.(4) Although the recipient primarily drives the alloimmune  
11 response, the release of inflammatory triggers by the donor kidney is gaining traction as an essential  
12 additional mechanism.(5) Specifically, recent studies indicate that the local inflammatory response by  
13 the donor kidney significantly impacts transplant outcome.(6)

14 Among all cytokines, transforming growth factor-beta ( $TGF-\beta$ ) is a multifaceted and -functional  
15 cytokine that is synthesized by nearly every cell type.(7) To date, three main isoforms of  $TGF-\beta$  have  
16 been identified in humans, (that is  $TGF-\beta_1$ ,  $TGF-\beta_2$ , and  $TGF-\beta_3$ ), which are encoded by distinct genes  
17 (*TGFB1*, *TGFB2*, and *TGFB3* respectively). Between these,  $TGF-\beta_1$  is the most common and best-  
18 characterized isoform. The functions of  $TGF-\beta_1$  range from regulating cellular processes (such as  
19 differentiation, migration, and apoptosis) to initiating the production of extracellular matrix proteins.(8)  
20 Despite this complexity, the  $TGF-\beta$  signaling pathway relies on a simple ligand-activated receptor  
21 complex. More specifically, signaling is initiated when dimerized  $TGF-\beta_1$  binds surface-tethered  $TGF-\beta$   
22 receptors, namely  $TGF-\beta R1$  and  $TGF-\beta R2$  (Fig. 1A).(9) This binding activates  $TGF-\beta R2$ , allowing it to  
23 phosphorylate  $TGF-\beta R1$ , which then propagates the signal intracytoplasmically by phosphorylating  
24 transcription factors of the small mothers against decapentaplegic homolog (SMAD) family, SMAD2 and  
25 SMAD3 (Fig. 1B).(9) Upon phosphorylation, SMAD2 and -3 trimerize with an obligate partner, SMAD4,  
26 permitting the nuclear translocation of the complex and, with the help of nuclear cofactors, transcription  
27 of  $TGF-\beta$  target genes (Fig. 1B).(9)

28 Among its many biological roles,  $TGF-\beta_1$  is predominantly known for being a critical driver of  
29 fibrosis in various diseases and conditions.(10) As a result, modulation of  $TGF-\beta_1$  activation and  
30 signaling is currently pursued as a therapeutic strategy to halt cancer progression as well as to prevent

1 fibrosis after surgery and in chronic diseases.(11) In recent years, however, the protective functions of  
2 TGF- $\beta$ 1 have attracted much attention and are now deemed equally important. Evidence from animal  
3 models and *in vitro* experiments demonstrate that the protective effects of TGF- $\beta$ 1 range from inhibiting  
4 inflammation to inducing autophagy.(7) Accordingly, the role of TGF- $\beta$ 1 in disease is context-dependent  
5 and may be protective or harmful.

6 In kidney transplantation, TGF- $\beta$ 1 has been a topic of interest for many years and TGF- $\beta$ 1 has  
7 been suggested to impact allograft survival in different ways.(12) Initially, multiple reports showed  
8 upregulation of TGF- $\beta$ 1 expression and signaling in kidney transplants during rejection.(13,14)  
9 Separately, plasma levels of TGF- $\beta$ 1 were shown to be a potential biomarker of progressive chronic  
10 kidney disease in certain populations.(15) Animal studies then demonstrated that TGF- $\beta$ 1  
11 overexpression in the kidney induced interstitial proliferation, tubular autophagy, and fibrosis.(16) In  
12 contrast, genetic deficiency of TGF- $\beta$ 1 in mice leads to multiorgan inflammation (including that of the  
13 kidney).(17) In the context of these findings, Du and colleagues found that TGF- $\beta$ 1 plasma levels were  
14 positively associated with long-term graft survival in kidney transplant recipients.(18) Finally, local TGF-  
15  $\beta$ 1 expression in the kidney allograft during rejection has been associated with a favorable  
16 outcome.(19,20) In these studies, however, it often remains unclear whether the association found with  
17 TGF- $\beta$ 1 is a cause or consequence of the pathology. Genetic studies have therefore used single  
18 nucleotide polymorphisms (SNPs) in the Transforming Growth Factor Beta 1 gene (*TGFB1*) to dissect  
19 the impact of TGF- $\beta$ 1 signaling on kidney transplant outcome. However, these studies have primarily  
20 been retrospective and underpowered, and, thus, they are often inconclusive in their analyses.

21 To elucidate the current conflicting data, we investigated the impact of a polymorphism in  
22 *TGFB1* on long-term outcomes in kidney transplantation patients as a model for target validation (Fig.  
23 1C). We specifically chose to study the *TGFB1* Thr263Ile variant (rs1800472 C>T) since it was identified  
24 as a major genetic driver of plasma TGF- $\beta$ 1 levels in a recent study by Höglund and colleagues using  
25 whole-genome sequencing data. In their study, the minor allele (=T-allele) of this polymorphism was  
26 shown to be significantly associated with lower plasma levels of TGF- $\beta$ 1.(21) Furthermore, the overall  
27 heritability of the differences observed in the plasma TGF- $\beta$ 1 concentration was 22.9%, while the  
28 heritability conditioned of this variant alone was 16.3%. We evaluated in the present study the  
29 association between this recently discovered low-producing *TGFB1* polymorphism and long-term kidney

- 1 graft survival. Additionally, our secondary endpoints were delayed graft function (DGF) and biopsy-
- 2 proven acute rejection (BPAR).
- 3

## 1 **Materials and Methods**

2

### 3 **Patient selection and study end-point**

4 The primary endpoint in this study was death-censored graft survival, defined as the need for dialysis  
5 or re-transplantation. Secondary endpoints were delayed graft function (DGF, defined by the United  
6 Network for Organ Sharing as “*the need for at least one dialysis treatment in the first week after kidney*  
7 *transplantation*”)(22) and biopsy-proven acute rejection (BPAR, according to the Banff 2007  
8 classification). We enrolled patients who underwent single kidney transplantation at the University  
9 Medical Center Groningen in the Netherlands between 1993 and 2008. From the 1430 kidney  
10 transplantations, 1271 recipient and donor pairs were included in the cohort as previously  
11 described.(23,24) Subjects were excluded due to technical complications during surgery, lack of DNA,  
12 re-transplantation, or loss of follow-up. This study was performed in accordance with the declaration of  
13 Helsinki and all patients provided written informed consent. The medical ethics committee of the  
14 University Medical Center Groningen approved the study under file n° METc 2014/077.

15

### 16 **DNA extraction and *TGFB1* genotyping**

17 Peripheral blood mononuclear cells were isolated from blood or splenocytes collected from the  
18 recipients and donors. DNA was extracted with a commercial kit as per the manufacturer’s instructions  
19 and stored at -80°C. Genotyping of the SNPs was determined via the Illumina VeraCode GoldenGate  
20 Assay kit (Illumina, San Diego, CA, USA), according to the manufacturer's instructions. Genotype  
21 clustering and calling were performed using BeadStudio Software (Illumina). The overall genotype  
22 success rate was 99.5% and six samples with a high missing call rate were excluded from subsequent  
23 analyses.

24

### 25 **Statistical analysis**

26 Statistical analyses were performed using SPSS software version 25 (SPSS Inc, Chicago, IL, USA).  
27 Data are displayed as mean  $\pm$  standard deviation for parametric variables, median [IQR] for non-  
28 parametric variables, and nominal data as the total number of patients and the percentage [n (%)].  
29 Differences between groups were examined with the Student’s t-test for normally distributed variables  
30 or the Mann-Whitney-U test for the not-normally distributed variables, and  $\chi^2$  test for categorical



1 variables, respectively. Log-rank tests were performed between different genotypes to assess the  
2 difference in the incidence of graft loss. Univariable analysis was performed to determine the association  
3 of genetic, donor, recipient, and transplant characteristics with graft survival. The factors identified in  
4 these analyses were thereafter tested in a multivariable Cox regression. Additionally, multivariable Cox  
5 regression with a stepwise forward selection was performed. Tests were two-tailed and regarded as  
6 statistically significant when  $P < 0.05$ .  
7

## 1 Results

2

### 3 Patient characteristics and long-term graft survival.

4 Baseline demographics and clinical characteristics of the 1,271 kidney transplant donor-recipient pairs  
5 are shown in Table 1. The mean follow-up after transplantation was 6.16 years  $\pm$  4.21 with a maximum  
6 follow-up period of 15 years. During follow-up, 215 grafts (16.9%) were lost, and the causes of graft  
7 failure included rejection (n = 126, including acute rejection, chronic antibody-mediated rejection and  
8 transplant glomerulopathy), vascular causes (n = 12), recurrence of primary disease (n = 16), surgical  
9 complications (n = 33), other causes (n = 16), or unknown (n = 12). The following characteristics were  
10 significantly associated with graft loss in univariate analysis; donor age, donor blood type (ABO vs  
11 others), donor type (living vs cadaveric), recipient age, recipient blood type (ABO vs others), use of  
12 cyclosporin, use of corticosteroids, cold ischemia time, warm ischemia time, and DGF.

13

### 14 Distribution of the *TGFB1* genetic variant

15 The observed genotypic frequencies of the Thr263Ile *TGFB1* variant (rs1800472 C>T) did not  
16 significantly differ between recipients (n = 1269; CC, 96.2%; CT, 3.8%; TT, 0%) and donors (n = 1267;  
17 CC, 97.0%; CT, 3.0%; TT, 0%) ( $P = 0.55$ ). No homozygosity was observed for this *TGFB1* polymorphism,  
18 but the distribution of the SNP was in Hardy–Weinberg equilibrium. The genotypic frequencies of the  
19 *TGFB1* polymorphism in donors and recipients were significantly higher than those reported by the 1000  
20 genomes project ( $P = 0.013$ ), but not compared to their European cohort ( $P = 0.60$ ).<sup>(25)</sup> The proportion  
21 of grafts with DGF significantly differed based on recipient *TGFB1* genotype (45.8% in CT vs. 32.2% in  
22 CC,  $P = 0.048$ ), but not for donor *TGFB1* genotype (36.8% in CT vs. 32.5% in CC,  $P = 0.58$ )  
23 (Supplementary Data). In logistic regression, recipients carrying the T-allele of the *TGFB1* variant  
24 showed a trend towards a higher risk of DGF (OR = 1.78 compared to C-allele; 95%-CI: 1.00 – 3.19;  $P$   
25 = 0.051). There was no difference in the overall BPAR frequency between the *TGFB1* genotypes in the  
26 donor (33.9% in CT vs. 34.2% in CC,  $P = 0.97$ ) or the recipient (25.0% in CT vs. 34.4% in CC,  $P = 0.18$ )  
27 (Supplementary Data). By contrast, the distribution of the *TGFB1* polymorphism in the donor, but not  
28 the recipient, differed significantly between patients with and without graft loss after complete follow-up  
29 (Table 1,  $P = 0.014$ ). More specifically, the T-allele of the *TGFB1* SNP was more prevalent in kidney

1 grafts that were lost during the follow-up period. These data suggest that TGF- $\beta$ 1 expression by the  
2 donor kidney might impact long-term graft survival in kidney transplantation.

3

#### 4 **Long-term kidney graft survival according to the *TGFB1* genotypes**

5 Kaplan–Meier survival analysis showed that the *TGFB1* SNP in the donor was associated with an  
6 increased risk for graft loss during follow-up (Figure 2). The *TGFB1* variant in the donor was significantly  
7 associated with 10-, and 15-year death-censored kidney graft survival in Kaplan–Meier survival  
8 analyses (Fig. 2B – C), but not with 5-year graft survival (Fig. 2A). After complete follow-up, the incidence  
9 of graft loss was 16.4% in the reference CC-genotype group and 31.6% in the CT-genotype group,  
10 respectively. The *TGFB1* variant in the recipient was not associated with death-censored kidney graft  
11 survival in Kaplan–Meier survival analyses (Fig. 2D – F). Subgroup analysis for recipient sex and donor  
12 type did not change these results (Supplementary Data).

13 Next, the donor-recipient pairs were divided into four groups based on the presence or absence  
14 of the T-allele in the donor and recipient. Kaplan–Meier survival analyses revealed a significant  
15 difference in graft survival among the four groups (Figure 3;  $P = 0.034$ ). Moreover, the T-allele of the  
16 *TGFB1* polymorphism in the donor seemed to have a bigger impact on graft survival than the T-allele in  
17 the recipient. Recipients with a CT-genotype receiving a graft with the CT-genotype appeared to have  
18 the worst outcome. However, this combined genotype was only identified in five donor-recipient pairs.

19

#### 20 **Regression analysis for the *TGFB1* polymorphism and graft loss**

21 Finally, we explored whether the *TGFB1* variant in the donor was an independent risk factor for graft  
22 loss. In univariate analysis, the T-allele of the *TGFB1* SNP in the donor was associated with a hazard  
23 ratio of 2.12 (95%-CI: 1.18 – 3.79;  $P = 0.012$ ) for graft loss after complete follow-up. Next, multivariable  
24 analysis was performed to adjust for potential confounders, including donor and recipient characteristics,  
25 and transplant variables (Table 2). In Cox regression analysis, the *TGFB1* SNP in the donor remained  
26 significantly associated with graft loss independent of potential confounders. Finally, we performed a  
27 multivariable analysis with a stepwise forward selection procedure using all variables that were  
28 significantly associated with graft loss in univariable analysis (Table 3). In the final model, the *TGFB1*  
29 SNP in the donor, donor and recipient age, recipient blood type, and DGF were included. After  
30 adjustment, the T-allele *TGFB1* SNP in the donor was significantly associated with graft loss with a

1 hazard ratio of 2.04 (95% CI: 1.14 – 3.68,  $P=0.017$ ). Altogether, these results demonstrate that the  
2 minor allele of the *TGFB1* variant in the donor associates with a higher risk of graft loss after kidney  
3 transplantation.

4

## 1 Discussion

2 New therapeutic strategies to improve long-term allograft survival are urgently needed, but the  
3 development of new drugs for kidney transplantation is limited.(26) Studies of human genetics are  
4 therefore needed to predict the success of novel drug targets since genetically supported drug targets  
5 are more than twice as likely to be successful in clinical trials and lead to approved therapeutics.(27,28)  
6 Here, we studied a common functional polymorphism in *TGFB1* to dissect the role of TGF- $\beta$ 1 signaling  
7 in kidney transplant survival. The key finding in our study is that kidney allografts possessing a low-  
8 producing *TGFB1* polymorphism are associated with a higher risk of graft loss. In contrast, no  
9 association was seen between this *TGFB1* polymorphism in the recipient and long-term allograft survival.  
10 In conclusion, our study provides genetic evidence that the TGF- $\beta$ 1 pathway in the donor could be  
11 favorable for long-term graft survival in kidney transplantation.

12 Whole-genome sequencing of plasma TGF- $\beta$ 1 recently highlighted the *TGFB1* polymorphism  
13 rs1800472 as the top functional variant in a genome-wide association study (GWAS) for plasma TGF-  
14  $\beta$ 1 levels using whole-genome sequencing.(21) Furthermore, the overall heritability of the TGF- $\beta$ 1  
15 concentration in plasma was ~23%, of which 71% of the genetic variance was explained by this  
16 polymorphism alone. To our knowledge, our study is the first to demonstrate an association between  
17 the *TGFB1* Thr263Ile variant in the donor and long-term graft survival after kidney transplantation. In  
18 particular, we found that the T-allele in the donor approximately doubled the risk of graft loss. Previously,  
19 the minor alleles of two other *TGFB1* polymorphisms (rs1800470-C>T and rs1800471-G>C) in the donor  
20 have also been associated with worse graft survival after kidney transplantation.(29) In line with our  
21 results, the minor alleles of these *TGFB1* polymorphisms have also been suggested to lead to lower  
22 levels of TGF- $\beta$ 1.(30–32) Furthermore, Du et al. reported that long-term survival kidney transplant  
23 recipients had higher TGF- $\beta$ 1 levels than short-term survival kidney transplant recipients.(33) Serum  
24 TGF- $\beta$ 1 levels positively correlated with long-term graft survival and function. Altogether, our study adds  
25 to a growing body of evidence that indicates that TGF- $\beta$ 1 has protective effects on kidney transplant  
26 survival.

27 The impact of the recipient *TGFB1* genotype on outcome after kidney transplantation has been  
28 investigated by various studies but remains controversial.(34–38) A recent metaanalysis of nine studies  
29 including 352 rejection cases and 882 controls concluded that the recipient *TGFB1* genotype was not  
30 significantly associated with acute rejection after kidney transplantation.(35) Similarly, we also found no

1 association between the *TGFB1* polymorphism rs1800472 in the recipient and BPAR (Supplementary  
2 Data). In the past, low-producing genotypes of *TGFB1* in the recipient have been associated with both  
3 superior and worse outcomes in kidney transplantation,(34,37) while others have found no association  
4 with kidney allograft survival.(36) In our transplant cohort of 1,271 donor-recipient pairs, we did not find  
5 an association between a low-producing *TGFB1* polymorphism in the recipient and graft survival either.  
6 We also assessed the relationship between the *TGFB1* polymorphism rs1800472 and DGF. While we  
7 did see a trend for higher risk of DGF in recipients carrying the T-allele of the *TGFB1* polymorphism, we  
8 did not find an association between the donor *TGFB1* genotype and DGF. Similar to our observations  
9 the study by Israni and colleagues found no association for the *TGFB1* polymorphism rs1800472 in the  
10 donor and DGF.(5) In conclusion, our results suggest that it is not the circulating TGF- $\beta$ 1 from the  
11 recipient, but rather the local TGF- $\beta$ 1 expression by the donor kidney that promotes graft survival in  
12 kidney transplantation.

13 Generally, TGF- $\beta$ 1 is considered to be a critical driver of fibrosis.(10) Given the abundance of  
14 evidence from animal models and translational studies, inhibiting the TGF- $\beta$ 1 signaling pathways would  
15 hypothetically prevent the development of kidney fibrosis in kidney disease and transplantation.(39,40)  
16 However, contrary to expectations, results from clinical trials have been underwhelming, as therapies  
17 targeting TGF- $\beta$ 1 have not translated into approved treatment for patients.(8,41,42) Emerging data  
18 demonstrate that TGF- $\beta$ 1 is not only capable of inducing fibrosis, but also has protective effects.(7) In  
19 conformity with the findings, loss-of-function mutations in the *TGFB1* gene were recently shown to cause  
20 severe inflammatory bowel disease and encephalopathy in humans, demonstrating the anti-  
21 inflammatory properties of this cytokine.(43) In preclinical transplantation studies, TGF- $\beta$ 1 was shown  
22 to protect against brain death-induced organ damage, ischemia-reperfusion injury, and prolong graft  
23 survival.(44–47) The mechanisms behind these protective effects include (i) Protecting kidney cells  
24 against apoptosis, (ii) Stimulating tissue regeneration, and (iii) Diminishing alloimmunity to kidney  
25 transplants by inducing tolerance through regulatory T cells.(12)

26 Several limitations of our study warrant consideration. First and foremost, our study is  
27 observational in nature and can therefore not prove causality. Further studies are needed to assess  
28 whether the observed association is indeed causal. Furthermore, we examined one polymorphism in  
29 *TGFB1* and did not assess *TGFB1* haplotypes. Lastly, the relationship between genotypes and plasma  
30 levels of TGF- $\beta$ 1 was not assessed in our cohort due to the lack of samples. In contrast, crucial strengths

1 of the current study include the analysis of a functional polymorphism in both the donor and recipient,  
2 the large sample size, and the stringent and clinically meaningful endpoint, and the lengthy follow-up  
3 time.

4 In conclusion, we found that patients receiving a donor kidney carrying the T-allele of the *TGFB1*  
5 polymorphism rs1800472 have a higher risk of late graft loss. Considering that this T-allele is a low-  
6 producing *TGFB1* variant, our findings imply a beneficial effect of TGF-  $\beta$ 1 signaling on long-term  
7 allograft survival in kidney transplantation.

8

1    **Disclosure**

2    The authors declare that the research was conducted in the absence of any commercial or financial  
3    relationships that could be construed as a potential conflict of interest.

4

5    **Acknowledgment**

6    The authors thank the members of the REGaTTA cohort (REnal GeneTics TrAnsplantation; University  
7    Medical Center Groningen, University of Groningen, Groningen, the Netherlands): S. J. L. Bakker, J.

8    van den Born, M. H. de Borst, H. van Goor, J. L. Hillebrands, B. G. Hepkema, G. J. Navis and H. Snieder.

9    The illustrations of Figure 1 were made by Siawosh K. Eskandari.

10



## 1   **References**

- 2   1.    Wekerle T, Segev D, Lechler R, Oberbauer R. Strategies for long-term preservation of kidney  
3       graft function. *The Lancet [Internet]* 2017; [cited 2017 Aug 15] 389: 2152–2162. Available from:  
4       <http://linkinghub.elsevier.com/retrieve/pii/S0140673617312837>
- 5   2.    Jordan SC, Ammerman N, Choi J et al. The role of novel therapeutic approaches for  
6       prevention of allosensitization and antibody-mediated rejection. *American Journal of*  
7       *Transplantation* 2020; 20: 42–56.
- 8   3.    Holdsworth SR, Can PY. Cytokines: Names and numbers you should care about [Internet].  
9       *Clinical Journal of the American Society of Nephrology* 2015; [cited 2021 Jun 1] 10: 2243–2254.  
10      Available from: <https://pubmed.ncbi.nlm.nih.gov/25941193/>
- 11  4.    Yang JYC, Sarwal MM. Transplant genetics and genomics. *Nature Reviews Genetics* 2017;  
12      18: 309–326.
- 13  5.    Israni AK, Li N, Cizman BB et al. Association of Donor Inflammation- and Apoptosis-Related  
14      Genotypes and Delayed Allograft Function After Kidney Transplantation. *American Journal of*  
15      *Kidney Diseases [Internet]* 2008; [cited 2021 Jun 1] 52: 331–339. Available from:  
16      <https://pubmed.ncbi.nlm.nih.gov/18640487/>
- 17  6.    Wang H, Guan Q, Lan Z et al. Prolonged renal allograft survival by donor interleukin-6  
18      deficiency: Association with decreased alloantibodies and increased intragraft T regulatory  
19      cells. *American Journal of Physiology - Renal Physiology [Internet]* 2012; [cited 2021 Jun 1]  
20      302. Available from: <https://pubmed.ncbi.nlm.nih.gov/22031852/>
- 21  7.    Sureshbabu A, Muhsin SA, Choi ME. TGF- $\beta$  signaling in the kidney: Profibrotic and protective  
22      effects [Internet]. *American Journal of Physiology - Renal Physiology* 2016; [cited 2021 Jun 2]  
23      310: F596–F606. Available from: <https://pubmed.ncbi.nlm.nih.gov/26739888/>
- 24  8.    Gu YY, Liu XS, Huang XR, Yu XQ, Lan HY. Diverse Role of TGF- $\beta$  in Kidney Disease  
25      [Internet]. *Frontiers in Cell and Developmental Biology* 2020; [cited 2021 Jun 1] 8: 123.  
26      Available from: [www.frontiersin.org](http://www.frontiersin.org)
- 27  9.    Shi Y, Massagué J. Mechanisms of TGF- $\beta$  signaling from cell membrane to the nucleus  
28      [Internet]. *Cell* 2003; [cited 2021 Jul 5] 113: 685–700. Available from:  
29      <https://pubmed.ncbi.nlm.nih.gov/12809600/>
- 30  10.   Frangogiannis NG. Transforming growth factor- $\beta$  in tissue fibrosis [Internet]. *Journal of*

- 1            *Experimental Medicine*2020; [cited 2021 Jun 1] 217. Available from:  
2            /pmc/articles/PMC7062524/
- 3    11.    Budi EH, Schaub JR, Decaris M, Turner S, Derynck R. TGF - $\beta$  as a driver of fibrosis:  
4            physiological roles and therapeutic opportunities . *The Journal of Pathology [Internet]* 2021;  
5            [cited 2021 Jun 15] 254: 358–373. Available from: [www.thejournalofpathology.com](http://www.thejournalofpathology.com)
- 6    12.    Du C. Transforming Growth Factor-Beta in Kidney Transplantation: A Double-Edged Sword  
7            [Internet]. In: *Kidney Transplantation - New Perspectives*. InTech, 2011 [cited 2021 Jun 2] ;  
8            Available from: [www.intechopen.com](http://www.intechopen.com)
- 9    13.    Pribylova-Hribova P, Kotsch K, Lodererova A et al. TGF- $\beta$ 1 mRNA upregulation influences  
10            chronic renal allograft dysfunction. *Kidney International [Internet]* 2006; [cited 2021 Jun 16] 69:  
11            1872–1879. Available from: <https://pubmed.ncbi.nlm.nih.gov/16612332/>
- 12    14.    Einecke G, Reeve J, Sis B et al. A molecular classifier for predicting future graft loss in late  
13            kidney transplant biopsies. *Journal of Clinical Investigation [Internet]* 2010; [cited 2021 Jun 16]  
14            120: 1862–1872. Available from: /pmc/articles/PMC2877953/
- 15    15.    Lee SB, Kanasaki K, Kalluri R. Circulating TGF-B1 as a reliable biomarker for chronic kidney  
16            disease progression in the African-American population [Internet]. *Kidney International*2009;  
17            [cited 2021 Jun 21] 76: 10–12. Available from: [http://www.kidney-](http://www.kidney-international.org/article/S0085253815538350/fulltext)  
18            [international.org/article/S0085253815538350/fulltext](http://www.kidney-international.org/article/S0085253815538350/fulltext)
- 19    16.    Koesters R, Kaissling B, LeHir M et al. Tubular overexpression of transforming growth factor-  
20             $\beta$ 1 induces autophagy and fibrosis but not mesenchymal transition of renal epithelial cells.  
21            *American Journal of Pathology [Internet]* 2010; [cited 2021 Jun 16] 177: 632–643. Available  
22            from: <https://pubmed.ncbi.nlm.nih.gov/20616344/>
- 23    17.    Shull MM, Ormsby I, Kier AB et al. Targeted disruption of the mouse transforming growth  
24            factor- $\beta$ 1 gene results in multifocal inflammatory disease [14]. *Nature [Internet]* 1992; [cited  
25            2021 Jun 21] 359: 693–699. Available from: <https://pubmed.ncbi.nlm.nih.gov/1436033/>
- 26    18.    Du X xiao, Guo Y liang, Yang M et al. Relationship of Transforming Growth Factor- $\beta$ 1 and  
27            Arginase-1 Levels with Long-term Survival after Kidney Transplantation. *Current Medical*  
28            *Science [Internet]* 2018; [cited 2021 Jun 22] 38: 455–460. Available from:  
29            <https://doi.org/10.1007/s11596-018-1900-7>
- 30    19.    Eikmans M, Sijpkens YWJ, Baelde HJ, De Heer E, Paul LC, Bruijn JA. High transforming

- 1 growth factor- $\beta$  and extracellular matrix mRNA response in renal allografts during early acute  
2 rejection is associated with absence of chronic rejection. *Transplantation [Internet]* 2002; [cited  
3 2021 Jun 22] 73: 573–579. Available from: <https://pubmed.ncbi.nlm.nih.gov/11889433/>
- 4 20. Viklicky O, Hribova P, Volk HD et al. Molecular phenotypes of acute rejection predict kidney  
5 graft prognosis. *Journal of the American Society of Nephrology [Internet]* 2010; [cited 2021 Jun  
6 22] 21: 173–180. Available from: <https://pubmed.ncbi.nlm.nih.gov/19797166/>
- 7 21. Höglund J, Rafati N, Rask-Andersen M et al. Improved power and precision with whole  
8 genome sequencing data in genome-wide association studies of inflammatory biomarkers.  
9 *Scientific Reports [Internet]* 2019; [cited 2021 Mar 27] 9. Available from:  
10 [/pmc/articles/PMC6856527/](https://pubmed.ncbi.nlm.nih.gov/33011111/)
- 11 22. Ann Lim M, Bloom RD. Medical therapies to reduce delayed graft function and improve long-  
12 term graft survival are we making progress? [Internet]. *Clinical Journal of the American Society*  
13 *of Nephrology* 2020; [cited 2021 May 31] 15: 13–15. Available from:  
14 <https://doi.org/10.2215/CJN.13961119>
- 15 23. Damman J, Daha MR, Leuvenink HG et al. Association of complement C3 gene variants with  
16 renal transplant outcome of deceased cardiac dead donor kidneys. *American journal of*  
17 *transplantation : official journal of the American Society of Transplantation and the American*  
18 *Society of Transplant Surgeons [Internet]* 2012; [cited 2015 Aug 11] 12: 660–668. Available  
19 from: <http://www.ncbi.nlm.nih.gov/pubmed/22176838>
- 20 24. Poppelaars F, Gaya da Costa M, Eskandari SK, Damman J, Seelen MA. Donor genetic  
21 variants in interleukin-6 and interleukin-6 receptor associate with biopsy-proven rejection  
22 following kidney transplantation. *Scientific Reports* 2021 11:1 [Internet] 2021; [cited 2021 Aug  
23 13] 11: 1–14. Available from: <https://www.nature.com/articles/s41598-021-95714-z>
- 24 25. Auton A, Abecasis GR, Altshuler DM et al. A global reference for human genetic variation.  
25 *Nature* 2015; 526: 68–74.
- 26 26. Abramowicz D, Oberbauer R, Heemann U et al. Recent advances in kidney transplantation: A  
27 viewpoint from the Descartes advisory board. *Nephrology Dialysis Transplantation* 2018; 33:  
28 1699–1707.
- 29 27. King EA, Wade Davis J, Degner JF. Are drug targets with genetic support twice as likely to be  
30 approved? Revised estimates of the impact of genetic support for drug mechanisms on the

- 1 probability of drug approval. PLoS Genetics 2019; 15: e1008489.
- 2 28. Nelson MR, Tipney H, Painter JL et al. The support of human genetic evidence for approved  
3 drug indications. Nature Genetics 2015; 47: 856–860.
- 4 29. Lacha J, Hribova P, Kotsch K et al. Effect of cytokines and chemokines (TGF- $\beta$ , TNF- $\alpha$ , IL-6,  
5 IL-10, MCP-1, RANTES) gene polymorphisms in kidney recipients on posttransplantation  
6 outcome: Influence of donor-recipient match. In: Transplantation Proceedings. Elsevier USA,  
7 2005; 764–766
- 8 30. Awad MR, El-Gamel A, Hasleton P, Turner DM, Sinnott PJ, Hutchinson I V. Genotypic variation  
9 in the transforming growth factor- $\beta$ 1 gene: Association with transforming growth factor- $\beta$ 1  
10 production, fibrotic lung disease, and graft fibrosis after lung transplantation. Transplantation  
11 *[Internet]* 1998; [cited 2021 Jun 1] 66: 1014–1020. Available from:  
12 <https://pubmed.ncbi.nlm.nih.gov/9808485/>
- 13 31. Yokota M, Ichihara S, Lin TL, Nakashima N, Yamada Y. Association of a T29→C  
14 polymorphism of the transforming growth factor-  $\beta$ 1 gene with genetic susceptibility to  
15 myocardial infarction in japanese. Circulation *[Internet]* 2000; [cited 2021 Jun 1] 101: 2783–  
16 2787. Available from: <https://pubmed.ncbi.nlm.nih.gov/10859282/>
- 17 32. Taubenschuß E, Marton E, Mogg M et al. The L10P polymorphism and serum levels of  
18 transforming growth factor $\beta$ 1 in human breast cancer. International Journal of Molecular  
19 Sciences *[Internet]* 2013; [cited 2021 Jun 1] 14: 15376–15385. Available from:  
20 <https://pubmed.ncbi.nlm.nih.gov/23887657/>
- 21 33. Du X xiao, Guo Y liang, Yang M et al. Relationship of Transforming Growth Factor- $\beta$ 1 and  
22 Arginase-1 Levels with Long-term Survival after Kidney Transplantation. Current Medical  
23 Science *[Internet]* 2018; [cited 2021 Jun 1] 38: 455–460. Available from:  
24 <https://pubmed.ncbi.nlm.nih.gov/30074212/>
- 25 34. Thakkinstian A, Dmitrienko S, Gerbase-DeLima M et al. Association between cytokine gene  
26 polymorphisms and outcomes in renal transplantation: A meta-analysis of individual patient  
27 data. Nephrology Dialysis Transplantation *[Internet]* 2008; [cited 2021 Jun 1] 23: 3017–3023.  
28 Available from: <https://pubmed.ncbi.nlm.nih.gov/18408074/>
- 29 35. Ge YZ, Wu R, Lu TZ et al. Combined effects of TGFB1 +869 T/C and +915 G/C  
30 polymorphisms on acute rejection risk in solid organ transplant recipients: A systematic review

- 1 and meta-analysis. PLoS ONE [Internet] 2014; [cited 2021 Jun 1] 9: e93938. Available from:  
2 [www.plosone.org](http://www.plosone.org)
- 3 36. Mytilineos J, Laux G, Opelz G. Relevance of IL10, TGF $\beta$ 1, TNF $\alpha$ , and IL4R $\alpha$  gene  
4 polymorphisms in kidney transplantation: A collaborative transplant study report. American  
5 Journal of Transplantation [Internet] 2004; [cited 2021 Jun 1] 4: 1684–1690. Available from:  
6 <https://pubmed.ncbi.nlm.nih.gov/15367225/>
- 7 37. Ming Chow K, Chun Szeto C, Poon P, Yan Lau W, Mac-Moune Lai F, Li PKT. Transforming  
8 growth factor- $\beta$ 1 gene polymorphism in renal transplant recipients. Renal Failure [Internet]  
9 2005; [cited 2021 Jun 1] 27: 671–675. Available from:  
10 <https://pubmed.ncbi.nlm.nih.gov/16350816/>
- 11 38. Dhaouadi T, Sfar I, Bardi R et al. Cytokine gene polymorphisms in kidney transplantation.  
12 Transplantation Proceedings [Internet] 2013; [cited 2021 Jun 1] 45: 2152–2157. Available from:  
13 <https://pubmed.ncbi.nlm.nih.gov/23747182/>
- 14 39. Boor P, Floege J. Renal allograft fibrosis: Biology and therapeutic targets [Internet]. *American*  
15 *Journal of Transplantation* 2015; [cited 2021 Jun 1] 15: 863–886. Available from:  
16 <https://pubmed.ncbi.nlm.nih.gov/25691290/>
- 17 40. Isaka Y. Targeting TGF- $\beta$  signaling in kidney fibrosis [Internet]. *International Journal of*  
18 *Molecular Sciences* 2018; [cited 2021 Jun 1] 19. Available from:  
19 <https://pubmed.ncbi.nlm.nih.gov/30150520/>
- 20 41. Vincenti F, Fervenza FC, Campbell KN et al. A Phase 2, Double-Blind, Placebo-Controlled,  
21 Randomized Study of Fresolimumab in Patients With Steroid-Resistant Primary Focal  
22 Segmental Glomerulosclerosis. *Kidney International Reports* 2017; 2: 800–810.
- 23 42. Voelker J, Berg PH, Sheetz M et al. Anti-TGF- $\beta$ 1 antibody therapy in patients with diabetic  
24 nephropathy [Internet]. In: *Journal of the American Society of Nephrology*. American Society of  
25 Nephrology, 2017 [cited 2021 Jun 1] ; 953–962 Available from: [www.jasn.org](http://www.jasn.org)
- 26 43. Kotlarz D, Marquardt B, Barøy T et al. Human TGF- $\beta$ 1 deficiency causes severe inflammatory  
27 bowel disease and encephalopathy. *Nature Genetics* [Internet] 2018; [cited 2021 Jun 2] 50:  
28 344–348. Available from: <https://pubmed.ncbi.nlm.nih.gov/29483653/>
- 29 44. Guan Q, Nguan CYC, Du C. Expression of transforming growth factor- $\beta$ 1 limits renal ischemia-  
30 reperfusion injury. *Transplantation* [Internet] 2010; [cited 2021 Jun 2] 89: 1320–1327. Available

- 1 from: <https://pubmed.ncbi.nlm.nih.gov/20458271/>
- 2 45. Chen L, Feng X, Wang Y et al. Study of the role of transforming growth factor  $\beta$ -1 in organ  
3 damage protection in porcine model of brain death. *Transplantation Proceedings [Internet]*  
4 2016; [cited 2021 Jun 2] 48: 205–209. Available from:  
5 <https://pubmed.ncbi.nlm.nih.gov/26915869/>
- 6 46. Luo X, Yang H, Kim IS et al. Systemic transforming growth factor- $\beta$ 1 gene therapy induces  
7 Foxp3+ regulatory cells, restores self-tolerance, and facilitates regeneration of beta cell  
8 function in overtly diabetic nonobese diabetic mice [Internet]. In: *Transplantation*.  
9 *Transplantation*, 2005 [cited 2021 Jun 2] ; 1091–1096 Available from:  
10 <https://pubmed.ncbi.nlm.nih.gov/15880049/>
- 11 47. Watson D, Zhang GY, Hu M et al. Transforming growth factor beta (TGF $\beta$ ) plays a crucial role  
12 in prolonging allograft survival in an allodepletion (“pruning”) skin transplant model. *Transplant*  
13 *Immunology [Internet]* 2014; [cited 2021 Jun 2] 30: 168–177. Available from:  
14 <https://pubmed.ncbi.nlm.nih.gov/24746800/>
- 15
- 16

## 1 Tables

2

**1 Table 1: Baseline characteristics of the donors and recipients**

		All Patients (n = 1271)	Functioning graft (n = 1056)	Graft loss (n = 215)	P-value*	HR	P-value#
<b>Donor</b>							
<b>TGFB1 SNP</b>	CC, n (%)	1229 (97.0)	1027 (97.5)	202 (94.4)	<b>0.014</b>	2.12	<b>0.012</b>
	CT, n (%)	38 (3.0)	26 (2.5)	12 (5.6)			
Age, years		44.4 ± 14.4	44.1 ± 14.6	46.1 ± 13.4	<b>0.044</b>	1.02	<b>&lt;0.001</b>
Male sex, n (%)		645 (50.7)	535 (50.7)	110 (51.2)	0.89		0.96
<b>Blood group</b>							
Type O, n (%)		642 (50.5)	541 (51.3)	101 (47.2)	<b>0.033</b>	0.39	<b>0.004</b>
Type A, n (%)		502 (39.5)	414 (39.3)	88 (41.1)		0.42	<b>0.01</b>
Type B, n (%)		97 (7.6)	82 (7.8)	15 (7.0)		0.36	<b>0.012</b>
Type AB, n (%)		27 (2.1)	17 (1.6)	10 (4.7)		Ref	<b>0.035</b>
<b>Donor type</b>							
Living, n (%)		282 (22.2)	257 (24.3)	25 (11.6)	<b>&lt;0.001</b>	Ref	<b>0.002</b>
Brain death, n (%)		787 (61.9)	642 (60.8)	145 (67.4)		1.94	
Circulatory death, n (%)		202 (15.9)	157 (14.9)	45 (20.9)			
<b>Recipient</b>							
<b>TGFB1 SNP</b>	CC, n (%)	1221 (96.2)	1017 (96.5)	204 (4.9)	0.26		0.17
	CT, n (%)	48 (3.8)	37 (3.5)	11 (5.1)			
Age, years		47.9 ± 13.5	48.5 ± 13.4	45.0 ± 13.2	<b>&lt;0.001</b>	0.99	<b>0.027</b>
Male sex, n (%)		739 (58.1)	607 (57.5)	132 (61.4)	0.29		0.21
<b>Primary kidney disease</b>							
Glomerulonephritis, n (%)		340 (26.8)	271 (25.6)	69 (32.2)	0.28		0.45
Polycystic disease, n (%)		208 (16.4)	188 (17.8)	20 (9.3)			
Vascular disease, n (%)		145 (9.9)	123 (11.6)	22 (10.3)			
Pyelonephritis, n (%)		148 (11.4)	120 (11.4)	28 (13.1)			
Diabetes, n (%)		51 (4.0)	44 (4.2)	7 (3.3)			
Idiopathic, n (%)		168 (13.2)	134 (12.7)	34 (15.9)			
Other, n (%)		211 (16.6)	177 (16.7)	34 (15.9)			
<b>Blood group</b>							
Type O, n (%)		567 (44.6)	474 (44.9)	93 (43.3)	<b>0.004</b>	0.46	<b>0.002</b>
Type A, n (%)		536 (42.2)	448 (42.4)	88 (40.9)		0.46	<b>0.002</b>
Type B, n (%)		113 (8.9)	98 (9.3)	15 (7.0)		0.35	<b>0.002</b>
Type AB, n (%)		55 (4.3)	36 (3.4)	19 (8.8)		Ref	<b>0.008</b>
Dialysis vintage, weeks		172 [91 – 263]	174 [87 – 261]	168 [109 – 270]	0.15		0.10
Highest PRA, in %		10.1 ± 23.6	10.0 ± 23.3	10.9 ± 25.0	0.60		0.75
<b>Immunosuppression</b>							
Anti-CD3 Moab, n (%)		19 (1.5)	14 (1.3)	5 (2.3)	0.27		0.51
ATG, n (%)		103 (8.1)	79 (7.5)	24 (11.2)	0.07		0.14
Azathioprine, n (%)		72 (5.7)	53 (5.0)	19 (8.8)	<b>0.027</b>		0.29
Corticosteroids, n (%)		1201 (94.5)	1002 (94.9)	199 (92.6)	0.17	0.51	<b>0.01</b>
Cyclosporin, n (%)		1085 (85.4)	911 (86.3)	174 (80.9)	<b>0.044</b>	0.66	<b>0.016</b>
Interleukin-2 RA, n (%)		199 (15.7)	163 (15.4)	36 (16.7)	0.63		0.12
Mycophenolic acid, n (%)		907 (71.4)	775 (73.4)	132 (61.4)	<b>&lt;0.001</b>		0.06
Sirolimus, n (%)		38 (3.0)	33 (3.1)	5 (2.3)	0.53		0.54
Tacrolimus, n (%)		97 (7.6)	77 (7.3)	20 (9.3)	0.31		0.39
<b>Transplantation</b>							
CIT, in hours		17.7 [10.9 – 23.0]	17.0 [8.6 – 23.0]	20.0 [15.3 – 25.0]	<b>&lt;0.001</b>	1.03	<b>0.001</b>
WIT, in minutes		37.0 [31 – 45]	37.0 [30 – 45]	38.0 [32 – 45]	0.12	1.02	<b>0.003</b>
Total HLA mismatches		2 [1 – 3]	2 [1 – 3]	2 [1 – 3]	0.48		0.11
DGF, n (%)		415 (32.7)	289 (27.4)	126 (58.6)	<b>&lt;0.001</b>	3.79	<b>&lt;0.001</b>

2  
3 Data are displayed as mean ± standard deviation for parametric variables; median [IQR] for non-  
4 parametric variables, and nominal data as the total number of patients with the corresponding  
5 percentage [n (%)]. *TGFB1*, transforming growth factor-beta 1 gene; *PRA*, panel-reactive antibody; *CD3*,



1 cluster of differentiation 3; *ATG*, Anti-thymocyte globulin; *RA*, receptor antagonist; *CIT*, cold ischemia  
2 time; *WIT*, warm ischemia time; *HLA*, human leukocyte antigen; *DGF*, delayed graft function. Bold  
3 values are used to show which testing was statistically significant ( $P$ -value < 0.05)

4  $P$ -value\* indicates the  $P$ -value for the differences in baseline characteristics between the groups,  
5 tested by Student's t-test or Mann–Whitney U test for continuous variables and with  $\chi^2$  test for  
6 categorical variables.

7  $P$ -value# indicates the  $P$ -value for univariable analysis with 15-year death censored graft survival.

8

1 **Table 2**

2 **Associations of *TGFB1* polymorphism in the donor with graft loss after kidney transplantation.**

	<i>TGFB1</i> SNP (rs1800472-T) in the donor		
	Hazard ratio (CT vs CC)	95% CI	P-value
<b>Model 1</b>	2.12	1.18 – 3.79	0.012
<b>Model 2</b>	2.05	1.11 – 3.79	0.023
<b>Model 3</b>	2.34	1.31 – 4.21	0.004
<b>Model 4</b>	2.11	1.17 – 3.79	0.013

3

4 Data are presented as a hazard ratio with 95% confidence interval (CI) and *P*-value.

5 **Model 1:** Crude model.

6 **Model 2:** Adjusted for model 1 plus recipient characteristics: recipient age, recipient sex, recipient blood  
7 type and dialysis vintage.

8 **Model 3:** Adjusted for model 1 plus donor characteristics: donor age, donor sex, donor blood type, and  
9 donor origin.

10 **Model 4:** Adjusted for model 1 plus transplant characteristics: cold and warm ischemia time, and the  
11 occurrence of delayed graft function (DGF).

12

1 **Table 3**  
 2 **Competitive analysis of the associations of characteristics with graft loss after kidney**  
 3 **transplantation.**

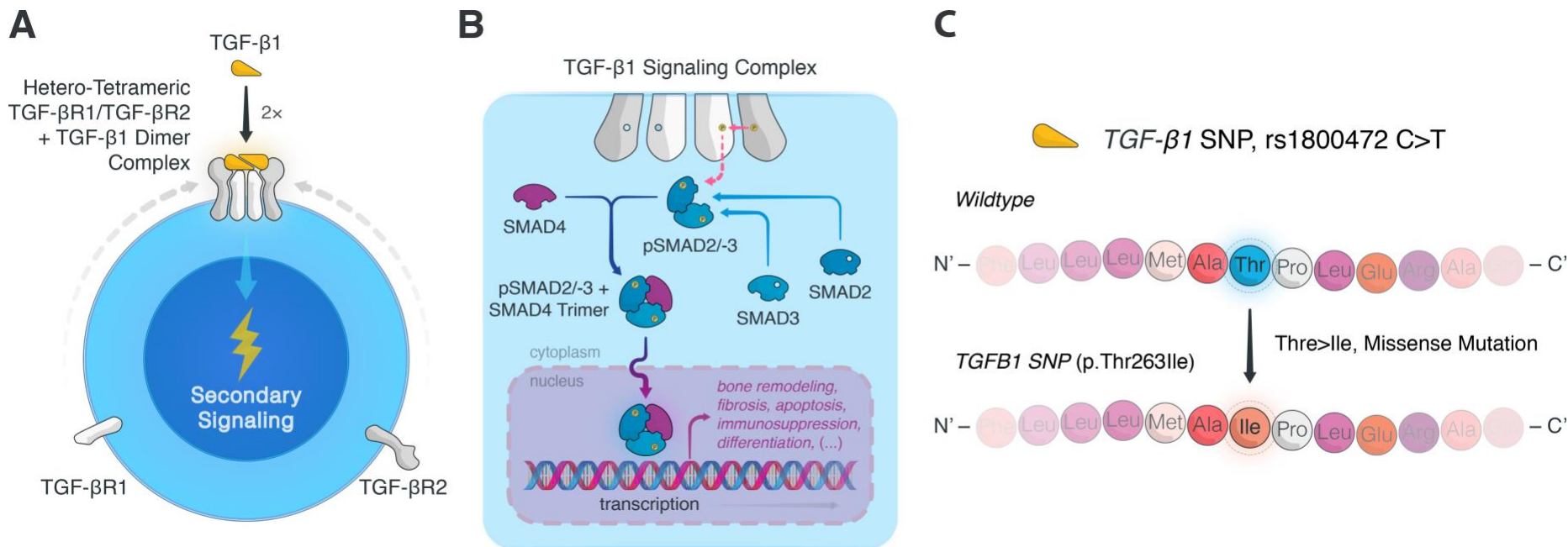
Variables not in the equation		Variables in the equation		
Variables	P-value	Variables	P-value	Hazard Ratio
Cold ischemia time (in hours)	0.054	rs1800472-T in the donor (CT versus CC)	0.017	2.04 (1.14 – 3.68)
Warm ischemia time (in minutes)	0.07	Donor age (in years)	0.003	1.02 (1.01 – 1.03)
Donor type (living versus deceased)	0.08	Recipient blood type (ABO versus other)	0.001	
Corticosteroids	0.12	Recipient age (in years)	<0.001	0.98 (0.97 – 0.99)
Cyclosporin	0.32	Delayed graft function (yes versus no)	<0.001	4.01 (3.03 – 5.31)
Donor blood type (ABO versus other)	0.98			

4  
 5 Multivariable cox regression was performed for kidney graft survival with a stepwise forward selection.  
 6 Only variables that with a *P*-value below 0.05 in the univariate analysis were included. Data are  
 7 presented as a hazard ratio with a 95% confidence interval (CI) and *P*-value. In the final model, the  
 8 *TGFB1* SNP (rs1800472-T) in the donor, donor age, recipient blood type, recipient age, and the  
 9 occurrence of delayed graft function were included, whereas cold ischemia time, warm ischemia time,  
 10 donor type, use of corticosteroids, use of cyclosporin, and donor blood type were not.  
 11

## 1 Figures

**Figure 1.**

**TGF- $\beta$ 1 signaling pathway and examined *TGFB1* Thr263Ile gene variant.**



(A) TGF- $\beta$ 1 signaling occurs when TGF- $\beta$ 1 forms a complex with surface-bound TGF- $\beta$  receptors 1 and 2 (TGF- $\beta$ R1 and TGF- $\beta$ R2 respectively). Specifically, two heterodimers of TGF- $\beta$ R1/TGF- $\beta$ R2 coalesce in the presence of dimeric TGF- $\beta$ 1, resulting in hetero-tetrameric complex. (B) The proximity of the intracytoplasmic tails of TGF- $\beta$ R2 initiates the sequential phosphorylation of TGF- $\beta$ R1 and the SMAD signal transducers, SMAD2 and -3. (Of note, although it is uncommon, following TGF- $\beta$ R1 phosphorylation non-SMAD-mediated signaling can also occur.) Once SMAD2/-3 has formed a dimeric unit, it can bind SMAD4, leading to nuclear translocation of the trimeric pSMAD2/-3 and SMAD4 complex. Inside the nucleus, the trimeric complex elicits transcription of TGF- $\beta$  target genes, resulting in a myriad of cellular responses from bone remodeling to fibrosis, to apoptosis and immunosuppression. (C) To appreciate the potential role of *TGFB1*-related SNPs in kidney transplant recipients and donor transplant kidneys, we assessed the association between transplant survival outcomes and the *TGFB1* SNP rs1800472C>T, which causes a missense mutation (p.Thr263Ile) in TGF- $\beta$ 1. Ile, isoleucine; SMAD, Small mothers against decapentaplegic homologue; TGF- $\beta$ , transforming growth factor beta; TGF- $\beta$ R, transforming growth factor beta receptor; Thr, threonine.

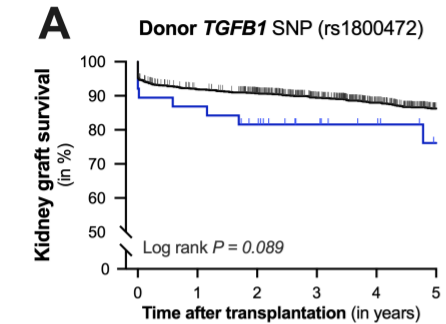
Figure 2.

Kaplan-Meier curves for 5, 10, 15-year death-censored graft survival after kidney transplantation according to the presence of the *TGFB1* variant in the donor and recipient.

5-year death-censored graft survival

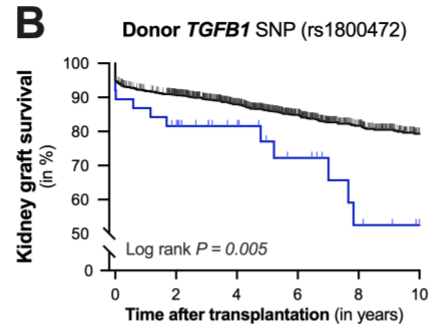
10-year death-censored graft survival

15-year death-censored graft survival



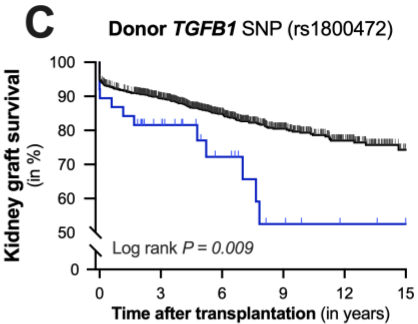
Patients at risk

CC	1229	1100	1038	917	803	683
CT	38	34	30	23	19	14



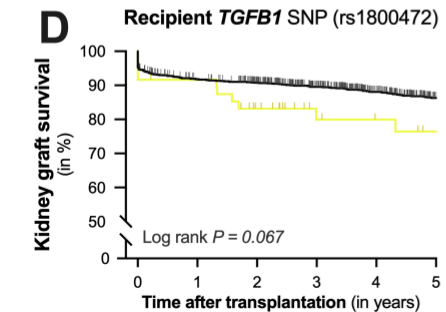
Patients at risk

CC	1229	1038	803	555	372	243
CT	38	30	19	15	9	5



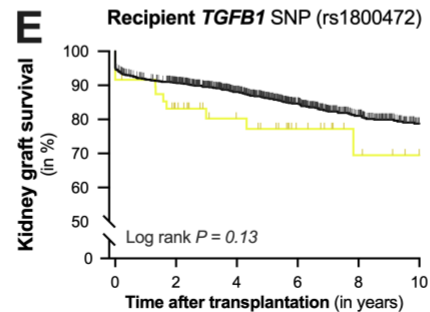
Patients at risk

CC	1229	917	555	305	158	43
CT	38	23	15	8	5	3



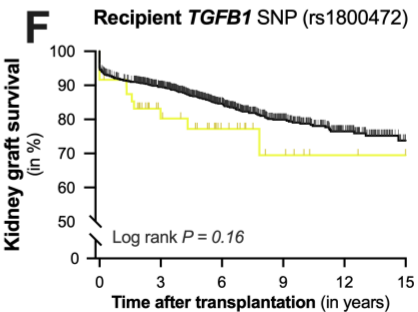
Patients at risk

CC	1221	1092	1034	916	801	678
CT	48	44	36	26	24	21



Patients at risk

CC	1221	1034	801	553	372	244
CT	48	36	24	17	10	6



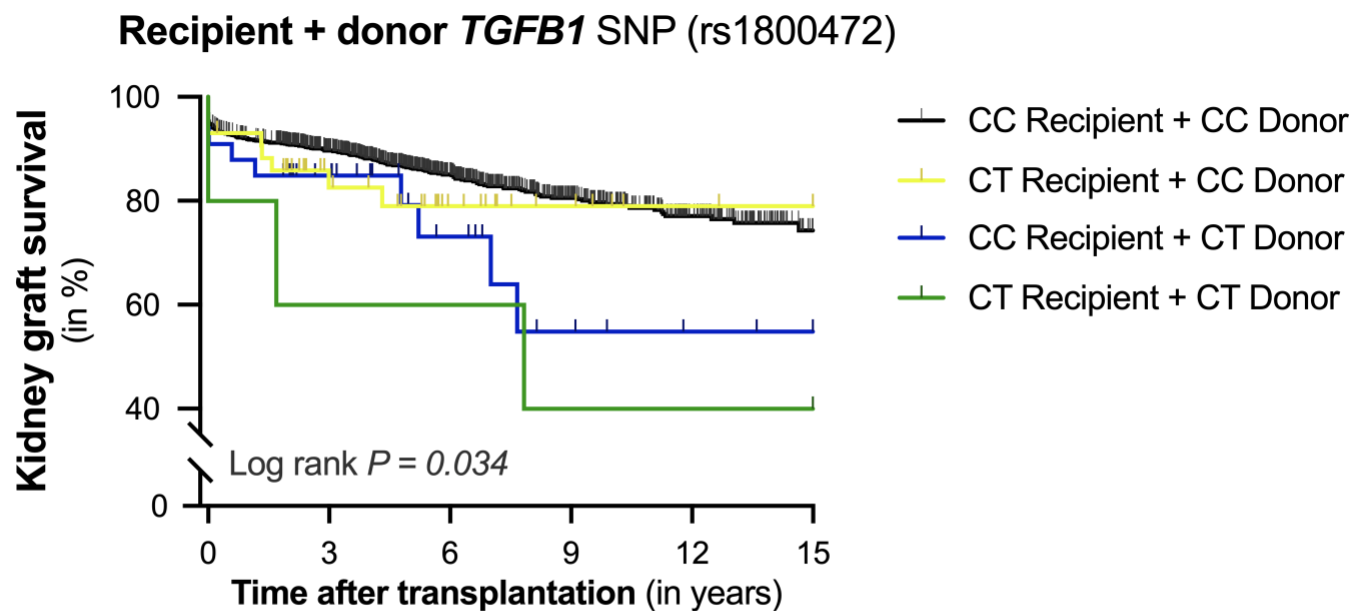
Patients at risk

CC	1221	916	553	306	158	43
CT	48	26	17	9	5	3

Cumulative 5- (A, D), 10- (B, E), and 15-year (C, F) death-censored kidney graft survival according to the presence of the Thr263Ile variant in the transforming growth factor beta 1 gene (*TGFB1*, rs1800472 C>T) in the donor (A – C, blue line) and the recipient (D – F, yellow line).

Figure 3.

Kaplan-Meier curves for 15-year death-censored graft survival after kidney transplantation according to the presence of the *TGFB1* variant in the donor and recipient.



Patients at risk

CC+CC	1184	891	540	298	156	42
CT+CC	43	26	14	7	3	1
CC+CT	33	22	12	6	3	1
CT+CT	5	3	3	2	2	2

Cumulative 15-year death-censored kidney graft survival according to the presence of the Thr263Ile variant in the transforming growth factor beta 1 gene (*TGFB1*, rs1800472 C>T) in donor-recipient pairs. Pairs were divided into four groups according to the absence (black line) or presence of the T-allele in the recipient (yellow line), donor (blue line) or both (green line). Log-rank test was used to compare the incidence of graft loss between the groups.

1 **Supplementary Data**

2

3 **Table S1.**

4 **Genotype frequency and hazard ratios for delayed graft function and acute biopsy-proven**  
5 **rejection for TGF $\beta$ 1 genotypes**

<i>TGF<math>\beta</math>1</i>	Delayed graft function		Immediate graft function		<i>P</i> -value <sup>a</sup>	Odds ratio (95%-CI)	<i>P</i> -value <sup>b</sup>
	CT	CC	CT	CC			
<b>rs1800472</b>							
<i>Donor</i>	14 (3.4%)	400 (96.6%)	24 (2.8%)	829 (97.2%)	0.58	1.21 (0.61 – 2.36)	0.58
<i>Recipient</i>	22 (5.3%)	393 (94.7%)	26 (3.0%)	828 (97.0%)	<b>0.048</b>	1.78 (1.00 – 3.19)	0.051
	Acute rejection		No rejection		<i>P</i> -value <sup>a</sup>	Hazard ratio (95%-CI)	<i>P</i> -value <sup>c</sup>
<b>rs1800472</b>	CT	CC	CT	CC			
<i>Donor</i>	13 (3.0%)	417 (97.0%)	25 (3.0%)	812 (97.0%)	0.97	1.04 (0.60 – 1.80)	0.90
<i>Recipient</i>	12 (2.8%)	420 (97.2%)	36 (4.3%)	801 (95.7%)	0.18	1.47 (0.83 – 2.61)	0.19

6

7 <sup>a</sup> *P*-value for the Pearson Chi-square test for differences in the genotype frequency.

8 <sup>b</sup> *P*-value for univariate logistic regression analysis for differences in the incidence of delayed graft  
9 function.

10 <sup>c</sup> *P*-value for univariate Cox regression analysis for differences in the incidence of biopsy-proven acute  
11 rejection.

12



1 **Table S2**

2 **Subgroup analysis for the association between graft loss and recipient TGF $\beta$ 1 genotypes.**

Recipient rs1800472 <i>TGF<math>\beta</math>1</i>	Functioning graft		Graft loss		<i>P</i> -value <sup>a</sup>	Hazard ratio (95%-CI)	<i>P</i> -value <sup>b</sup>
	CT	CC	CT	CC			
<i>Female recipient</i>	12 (2.7%)	435 (97.3%)	5 (6.0%)	78 (94.0%)	0.11	2.19 (0.80 – 6.03)	0.13
<i>Male recipient</i>	25 (4.1%)	582 (95.9%)	6 (4.5%)	126 (95.5%)	0.83	1.60 (0.70 – 3.65)	0.27
Recipient rs1800472 <i>TGF<math>\beta</math>1</i>	Functioning graft		Graft loss		<i>P</i> -value <sup>a</sup>	Hazard ratio (95%-CI)	<i>P</i> -value <sup>b</sup>
	CT	CC	CT	CC			
<i>Deceased kidney donor</i>	31 (3.9%)	766 (96.1%)	9 (4.7%)	181 (95.3%)	0.60	1.67 (0.85 – 3.28)	0.14
<i>Living kidney donor</i>	6 (2.3%)	251 (97.7%)	2 (8.0%)	23 (92.0%)	0.10	2.32 (0.31 – 17.49)	0.41

3

4 Subgroup analyses was performed for recipient sex as well as donor type for graft loss according to the  
5 presence of the *TGF $\beta$ 1* rs1800472 polymorphism in the recipient.

6 <sup>a</sup> *P*-value for the Pearson Chi-square test for differences in the genotype frequency.

7 <sup>b</sup> *P*-value for univariate Cox regression analysis for differences in the incidence of graft loss after  
8 complete follow-up.