

Title Page

A functional *TGFB1* polymorphism in the donor associates with long-term graft survival after kidney transplantation.

Felix Poppelaars¹, Mariana Gaya da Costa^{1,*}, Bernardo Faria^{1,2,*}, Siawosh K. Eskandari¹, Jeffrey Damman³, Marc A. Seelen¹

* Shared second author

¹ Department of Internal Medicine, Division of Nephrology, University Medical Center Groningen, University of Groningen, Groningen, The Netherlands.

² Nephrology and Infectious Disease R&D Group, INEB, Institute of Investigation and Innovation in Health (i3S), University of Porto, Porto, Portugal.

³ Department of Pathology, Erasmus Medical Center, University Medical Center, Rotterdam, The Netherlands.

Running head: *TGFB1* SNP associates with graft loss.

Keywords: TGF-beta, kidney transplantation, nephrology, genetics.

Word Title: 15 words

Running head: 33

Word count abstract 250 words

Word count body: 2.945 words

Number of pages: 32

Number of figures/tables: 6

References: 47

Address for Correspondence:

Felix Poppelaars, M.D./Ph.D.

University Medical Center Groningen

Department of internal medicine, Division of Nephrology, AA53

Postbus 196

9700 AD Groningen, The Netherlands

Phone: +31 50 3610544

Fax: +31 50 3619320

E-Mail: f.poppelaars@umcg.nl

Abbreviations

CIT	Cold ischemia time
BPAR	Biopsy-proven acute rejection
DBD	Donation after circulatory death
DCD	Donation after brain death
DGF	Delayed graft function
ESKD	End-stage kidney disease
HLA	Human leukocyte antigen
HR	Hazard ratio
PRA	Panel-reactive antibody
SMAD	Mothers against decapentaplegic homologue
SNP	Single-nucleotide polymorphism
TGF- β	Transforming growth factor beta
TGF- β 1	Transforming growth factor beta 1
<i>TGFB1</i>	Transforming growth factor beta 1 gene
WIT	Warm ischemia time

Abstract

Introduction

Improvement of long-term outcomes in kidney transplantation remains one of the most pressing challenges, yet drug development is stagnating. Human genetics offers an opportunity for much-needed target validation in transplantation. Conflicting data exists about the effect of transforming growth factor-beta 1 (TGF- β 1) on kidney transplant survival, since TGF- β 1 has profibrotic and protective effects. We therefore the impact of a recently discovered functional *TGBF1* polymorphism on long-term kidney graft survival.

Methods

We performed an observational cohort study analyzing recipient and donor DNA in 1,271 kidney transplant-pairs from the University Medical Center Groningen in The Netherlands and associated a low-producing *TGBF1* polymorphism (rs1800472-C>T) with 5, 10, and 15-year death-censored kidney graft survival.

Results

Donor genotype frequencies of s1800472 in *TGBF1* differed significantly between patients with and without graft loss ($P=0.042$). Additionally, the low-producing *TGBF1* polymorphism in the donor was associated with an increased risk of graft loss following kidney transplantation (HR 2.13 for the T-allele; 95%-CI 1.16–3.90; $P=0.015$). The incidence of graft loss within 15 years of follow-up 16.4% in the CC-genotype group and 28.9% in the CT-genotype group. After adjustment for transplant-related covariates, the association between the *TGBF1* polymorphism in the donor and graft loss remained significant. In contrast, there was no association between the *TGBF1* polymorphism in the recipient and graft loss.

Conclusion

Kidney allografts possessing a low-producing *TGBF1* polymorphism have a higher risk of late graft loss. Our study adds to a growing body of evidence that TGF- β 1 is beneficial, rather than harmful, for kidney transplant survival.

Introduction

Short-term outcomes following kidney transplantation have dramatically improved in the past 25 years, adding over one million life-years to patients in the United States alone. Nonetheless, improving the long-term transplant outcomes remains a crucial challenge.(1) The alloimmune response is recognized as a major contributor to late kidney transplant failure.(2) Furthermore, cytokines play a pivotal role in orchestrating the immune response.(3) Understanding the contribution of cytokines to donor-recipient incompatibility in kidney transplantation, therefore, is crucial as it can lead to the development of novel treatment strategies. Transplantation is a unique situation from a genetic and an immunological perspective, as two genomes are brought together. Genetic differences between the donor and recipient subsequently lead to immunological injury.(4) Although the recipient primarily drives the alloimmune response, the release of inflammatory triggers by the donor kidney is gaining traction as an essential additional mechanism.(5) Specifically, recent studies indicate that the local inflammatory response by the donor kidney significantly impacts transplant outcome.(6)

Among all cytokines, transforming growth factor beta (TGF- β) is a multifaceted and -functional cytokine that is synthesized by nearly every cell type.(7) To date, three main isoforms of TGF- β have been identified in humans, (that is TGF- β 1, TGF- β 2, and TGF- β 3), which are encoded by distinct genes (*TGFB1*, *TGFB2*, and *TGFB3* respectively). Between these, TGF- β 1 is the most common and best-characterized isoform. The functions of TGF- β 1 range from regulating cellular processes (such as differentiation, migration, and apoptosis) to initiating the production of extracellular matrix proteins.(8) Despite this complexity, the TGF- β signaling pathway relies on a simple ligand-activated receptor complex. More specifically, signaling is initiated when dimerized TGF- β 1 binds surface-tethered TGF- β receptors, namely TGF- β R1 and TGF- β R2 (Fig. 1A).(9) This binding activates TGF- β R2, allowing it to phosphorylate TGF- β R1, which then propagates the signal intracytoplasmically by phosphorylating transcription factors of the mothers against decapentaplegic homologue (SMAD) family, SMAD2 and SMAD3 (Fig. 1B).(9) Upon phosphorylation, SMAD2 and -3 trimerize with an obligate partner, SMAD4, permitting the nuclear translocation of the complex and, with the help of nuclear cofactors, transcription of TGF- β target genes (Fig. 1B).(9)

Among its many biological roles, TGF- β 1 is predominantly known for being a critical driver of fibrosis in various diseases and conditions.(10) As a result, modulation of TGF- β 1 activation and signaling is currently pursued as a therapeutic strategy to halt cancer progression as well as to

prevent fibrosis after surgery and in chronic diseases.(11) In recent years, however, the protective functions of TGF- β 1 have attracted much attention and are now deemed equally important. Evidence from animal models and *in vitro* experiments demonstrate that the protective effects of TGF- β 1, from inhibiting inflammation and to inducing autophagy.(7) Accordingly, the role of TGF- β 1 in disease is context-dependent and may be protective or harmful.

In kidney transplantation TGF- β 1 has been a topic of interest for many years and TGF- β 1 has been suggested to impact allograft survival in different ways.(12) Initially, multiple reports showed upregulation of TGF- β 1 expression and signaling in kidney transplants during rejection.(13,14) Separately, plasma levels of TGF- β 1 were shown to be a potential biomarker of progressive chronic kidney disease in certain populations.(15) Animal studies then demonstrated that TGF- β 1 overexpression in the kidney induced interstitial proliferation, tubular autophagy, and fibrosis.(16) In contrast, genetic deficiency of TGF- β 1 in mice lead to multiorgan inflammation (including that of the kidney).(17) In the context of these findings, Du and colleagues found that TGF- β 1 plasma levels were positively associated with long-term graft survival in kidney transplant recipients.(18) Finally, local TGF- β 1 expression in the kidney allograft during rejection has been associated with a favorable outcome.(19,20) In these studies, however, it often remains unclear whether the association found with TGF- β 1 is a cause or consequence of the pathology. Genetic studies have therefore used single nucleotide polymorphisms (SNPs) in the Transforming Growth Factor Beta 1 gene (*TGFB1*) to dissect the impact of TGF- β 1 signaling on kidney transplant outcome. However, these studies have primarily been retrospective and underpowered, and, thus, they are often inconclusive in their analyses.

To elucidate the current conflicting data, we investigated the impact of a polymorphisms in *TGFB1* on long-term outcomes in kidney transplantation patients as a model for target validation (Fig. 1C). We specifically chose to study the *TGFB1* Thr263Ile variant (rs1800472 C>T) since it was identified as a major genetic driver of plasma TGF- β 1 levels in a recent study by Höglund and colleagues using whole-genome sequencing data. In their study, the minor allele (=T-allele) of this polymorphism was shown to be significantly associated with lower plasma levels of TGF- β 1.(21) Furthermore, the overall heritability of the differences observed in the plasma TGF- β 1 concentration was 22.9%, while the heritability conditioned of this variant alone was 16.3%. We evaluated in the present study the association between this recently discovered low-producing *TGFB1* polymorphism

and long-term kidney graft survival. Additionally, our secondary endpoints were delayed graft function (DGF) and biopsy-proven acute rejection (BPAR).

Materials and Methods

Patient selection and study end-point

The primary endpoint in this study was death-censored graft survival, defined as the need for dialysis or re-transplantation. Secondary endpoints were delayed graft function (DGF, defined by the United Network for Organ Sharing as “*the need for at least one dialysis treatment in the first week after kidney transplantation*”)(22) and biopsy-proven acute rejection (BPAR, according to the Banff 2007 classification. We enrolled patients who underwent single kidney transplantation at the University Medical Center Groningen in the Netherlands between 1993 and 2008. From the 1430 kidney transplantations, 1271 recipient and donor pairs were included in the cohort as previously described.(23,24) Subjects were excluded due to technical complications during surgery, lack of DNA, re-transplantation, or loss of follow-up. This study was performed in accordance with the declaration of Helsinki and all patients provided written informed consent. The medical ethics committee of the University Medical Center Groningen approved the study under file n° METc 2014/077.

DNA extraction and *TGFB1* genotyping

Peripheral blood mononuclear cells were isolated from blood or splenocytes collected from the recipients and donors. DNA was extracted with a commercial kit as per the manufacturer's instructions and stored at -80°C. Genotyping of the SNPs was determined via the Illumina VeraCode GoldenGate Assay kit (Illumina, San Diego, CA, USA), according to the manufacturer's instructions. Genotype clustering and calling were performed using BeadStudio Software (Illumina). The overall genotype success rate was 99.5% and six samples with a high missing call rate were excluded from subsequent analyses.

Statistical analysis

Statistical analyses were performed using SPSS software version 25 (SPSS Inc, Chicago, IL, USA). Data are displayed as mean \pm standard deviation for parametric variables, median [IQR] for non-parametric variables, and nominal data as the total number of patients and the percentage [n (%)]. Differences between groups were examined with the Student's t-test for normally distributed variables or the Mann-Whitney-U test for the not-normally distributed variables, and χ^2 test for categorical

variables, respectively. Log-rank tests were performed between different genotypes to assess the difference in the incidence of graft loss. Univariable analysis was performed to determine the association of genetic, donor, recipient, and transplant characteristics with graft survival. The factors identified in these analyses were thereafter tested in a multivariable Cox regression. Additionally, multivariable Cox regression with a stepwise forward selection was performed. Tests were two-tailed and regarded as statistically significant when $P < 0.05$.

Results

Patient characteristics and long-term graft survival.

Baseline demographics and clinical characteristics of the 1,271 kidney transplant donor-recipient pairs are shown in Table 1. The mean follow-up after transplantation was 6.16 years \pm 4.21 with a maximum follow-up period of 15 years. During follow-up, 214 grafts (17.4%) were lost, and the causes of graft failure included rejection ($n = 126$, including acute rejection, chronic antibody-mediated rejection and transplant glomerulopathy), vascular causes ($n = 12$), recurrence of primary disease ($n = 16$), surgical complications ($n = 33$), other causes ($n = 16$), or unknown ($n = 11$). The following characteristics were significantly associated with graft loss in univariate analysis; donor age, donor blood type (ABO vs others), donor type (living vs cadaveric), recipient age, recipient blood type (ABO vs others), use of cyclosporin, use of corticosteroids, cold ischemia time, warm ischemia time, and DGF.

Distribution of the *TGFB1* genetic variant

The observed genotypic frequencies of the Thr263Ile *TGFB1* variant (rs1800472 C>T) did not significantly differ between recipients ($n = 1269$; CC, 96.2%; CT, 3.8%; TT, 0%) and donors ($n = 1267$; CC, 97.0%; CT, 3.0%; TT, 0%) ($P = 0.55$). No homozygosity was observed for this *TGFB1* polymorphism, but the distribution of the SNP was in Hardy–Weinberg equilibrium. The genotypic frequencies of the *TGFB1* polymorphism in donors and recipients were significantly higher than those reported by the 1000 genomes project ($P = 0.013$), but not compared to their European cohort ($P = 0.60$).⁽²⁵⁾ The proportion of grafts with DGF significantly differed based on recipient *TGFB1* genotype (45.8% in CT vs. 32.2% in CC, $P = 0.048$), but not for donor *TGFB1* genotype (36.8% in CT vs. 32.5% in CC, $P = 0.58$) (Supplementary Data). In logistic regression, recipients carrying the T-allele of the *TGFB1* variant showed a trend towards a higher risk of DGF (OR = 1.79 compared to C-allele; 95%-CI: 1.00 – 3.19; $P = 0.051$). There was no difference in the overall BPAR frequency between the *TGFB1* genotypes in the donor (33.9% in CT vs. 34.2% in CC, $P = 0.97$) or the recipient (25.0% in CT vs. 34.4% in CC, $P = 0.18$) (Supplementary Data). By contrast, the distribution of the *TGFB1* polymorphism in the donor, but not the recipient, differed significantly between patients with and without graft loss after complete follow-up (Table 1, $P = 0.042$). More specifically, the T-allele of the *TGFB1* SNP was more

prevalent in kidney grafts that were lost during the follow-up period. These data suggest that TGF- β 1 expression by the donor kidney might impact long-term graft survival in kidney transplantation.

Long-term kidney graft survival according to the *TGFB1* genotypes

Kaplan–Meier survival analysis showed that the *TGFB1* SNP in the donor was associated with an increased risk for graft loss during follow-up (Figure 2). The *TGFB1* variant in the donor was significantly associated with 10-, and 15-year death-censored kidney graft survival in Kaplan–Meier survival analyses (Fig. 2B – C), but not with 5-year graft survival (Fig. 2A). After complete follow-up, the incidence of graft loss was 16.4% in the reference CC-genotype group and 28.9% in the CT-genotype group, respectively. The *TGFB1* variant in the recipient was not associated with death-censored kidney graft survival in Kaplan–Meier survival analyses (Fig. 2D – F). Subgroup analysis for recipient sex and donor type did not change these results (data not shown).

Next, the donor-recipient pairs were divided into four groups based on to the presence or absence of the T-allele in the donor and recipient. Kaplan–Meier survival analyses revealed a significant difference in graft survival among the four groups (Figure 3; $P = 0.034$). Moreover, the T-allele of the *TGFB1* polymorphism in the donor seemed to have a bigger impact on graft survival than the T-allele in the recipient. Recipients with a CT-genotype receiving a graft with the CT-genotype appeared to have the worst outcome. However, this combined genotype was only identified in five donor-recipient pairs.

Regression analysis for the *TGFB1* polymorphism and graft loss

Finally, we explored whether the *TGFB1* variant in the donor was an independent risk factor for graft loss. In univariate analysis, the T-allele of the *TGFB1* SNP in the donor was associated with a hazard ratio of 2.13 (95%-CI: 1.16 – 3.90; $P = 0.015$) for graft loss after complete follow-up. Next, multivariable analysis was performed to adjust for potential confounders, including donor and recipient characteristics, and transplant variables (Table 2). In Cox regression analysis, the *TGFB1* SNP in the donor remained significantly associated with graft loss independent of potential confounders. Finally, we performed a multivariable analysis with a stepwise forward selection procedure using all variables that were significantly associated with graft loss in univariable analysis (Table 3). In the final model, the *TGFB1* SNP in the donor, donor and recipient age, recipient blood type, and DGF were included.

After adjustment, the T-allele *TGFB1* SNP in the donor was significantly associated with graft loss with a hazard ratio of 2.07 (95% CI: 1.12 – 3.82, $P=0.020$). Altogether, these results demonstrate that the minor allele of the *TGFB1* variant in the donor associates with a higher risk of graft loss after kidney transplantation.

Discussion

New therapeutic strategies to improve long-term allograft survival are urgently needed, but the development of new drugs for kidney transplantation is limited.(26) Studies of human genetics are therefore needed to predict the success of a novel drug targets, since genetically supported drug targets are more than twice as likely to be successful in clinical trials and lead to approved therapeutics.(27,28) Here, we studied a common functional polymorphism in *TGFB1* to dissect the role of TGF- β 1 signaling in kidney transplant survival. The key finding in our study is that kidney allografts possessing a low-producing *TGFB1* polymorphism are associated with a higher risk of graft loss. In contrast, no association was seen between this *TGFB1* polymorphism in the recipient and long-term allograft survival. In conclusion, our study provides genetic evidence that the TGF- β 1 pathway in the donor could be favorable for long-term graft survival in kidney transplantation.

Whole-genome sequencing of plasma TGF- β 1 recently highlighted the *TGFB1* polymorphism rs1800472 as the top functional variant in a genome-wide association study (GWAS) for plasma TGF- β 1 levels using whole genome sequencing.(21) Furthermore, the overall heritability of the TGF- β 1 concentration in plasma was ~23%, of which 71% of the genetic variance was explained by this polymorphism alone. To our knowledge, our study is the first to demonstrate an association between the *TGFB1* Thr263Ile variant in the donor and long-term graft survival after kidney transplantation. In particular, we found that the T-allele in the donor nearly doubled the risk of graft loss. Previously, the minor alleles of two other *TGFB1* polymorphisms (rs1800470-C>T and rs1800471-G>C) in the donor have also associated with worse graft survival after kidney transplantation.(29) In line with our results, the minor alleles of these *TGFB1* polymorphisms have also been suggested to lead to lower levels of TGF- β 1.(30–32) Furthermore, Du et al. reported that long-term survival kidney transplant recipients had higher TGF- β 1 levels than short-term survival kidney transplant recipients.(33) Serum TGF- β 1 levels positively correlated with long-term graft survival and function. Altogether, our study adds to a growing body of evidence that indicates that TGF- β 1 has protective effects on kidney transplant survival.

The impact of the recipient *TGFB1* genotype on outcome after kidney transplantation has been investigated by various studies but remains controversial.(34–38) A recent meta-analysis of nine studies including 352 rejection cases and 882 controls concluded that the recipient *TGFB1* genotype was not significantly associated with acute rejection after kidney transplantation.(35) Similarly, we also

found no association between the *TGFB1* polymorphism rs1800472 in the recipient and BPAR (Supplementary Data). In the past, low-producing genotypes of *TGFB1* in the recipient have been associated with both superior and worse outcomes in kidney transplantation,(34,37) while others have found no association with kidney allograft survival.(36) In our transplant cohort of 1,271 donor-recipient pairs, we did not find an association between a low-producing *TGFB1* polymorphism in the recipient and graft survival either. We also assessed the relationship between the *TGFB1* polymorphism rs1800472 and DGF. While we did see a trend for a higher risk of DGF in recipients carrying the T-allele of the *TGFB1* polymorphism, we did not find an association between the donor *TGFB1* genotype and DGF. Similar to our observations the study by Israni and colleagues found no association for the *TGFB1* polymorphism rs1800472 in the donor and DGF.(5) In conclusion, our results suggest that it is not the circulating TGF- β 1 from the recipient, but rather the local TGF- β 1 expression by the donor kidney that promotes graft survival in kidney transplantation.

Generally, TGF- β 1 is generally considered to be a critical driver of fibrosis.(10) Given the abundance of evidence from animal models and translational studies, inhibiting the TGF- β 1 signaling pathways would hypothetically to prevent the development of kidney fibrosis in kidney disease and transplantation.(39,40) However, contrary to expectations, results from clinical trials have been underwhelming, as therapies targeting TGF- β 1 have not translated into approved treatment for patients.(8,41,42) Emerging data demonstrates that TGF- β 1 is not only capable of inducing fibrosis, but also has protective effects.(7) In conformity with the findings, loss-of-function mutations in the *TGFB1* gene were recently shown to cause severe inflammatory bowel disease and encephalopathy in humans, demonstrating the anti-inflammatory properties of this cytokine.(43) In preclinical transplantation studies, TGF- β 1 was shown to protect against brain death-induced organ damage, ischemia-reperfusion injury, and prolonged graft survival.(44–47) The mechanisms behind these protective effects include (i) Protecting kidney cells against apoptosis, (ii) Stimulating tissue regeneration, and (iii) Diminishing alloimmunity to kidney transplants by inducing tolerance through regulatory T cells.(12)

Several limitations of our study warrant consideration. First and foremost, our study is observational in nature and can therefore not prove causality. Further studies are needed to assess whether the observed association is indeed causal. Furthermore, we examined a single polymorphism in *TGFB1* and did not assess *TGFB1* haplotypes. Lastly, the relationship between genotypes and

plasma levels of TGF- β 1 was not assessed in our cohort due to the lack of samples. In contrast, crucial strengths of the current study include the analysis of a functional polymorphism in both the donor and recipient, the large sample size, and the stringent and clinically meaningful endpoint, and the lengthy follow-up time.

In conclusion, we found that patients receiving a donor kidney carrying the T-allele of the *TGFB1* polymorphism rs1800472 have a higher risk of late graft loss. Considering that this T-allele is a low-producing *TGFB1* variant, our findings imply a beneficial effect of TGF- β 1 signaling on long-term allograft survival in kidney transplantation.

Disclosure

The authors declare that the research was conducted in the absence of any commercial or financial relationships that could be construed as a potential conflict of interest.

Acknowledgement

The authors thank the members of the REGaTTA cohort (REnal GeneTics TrAnsplantation; University Medical Center Groningen, University of Groningen, Groningen, the Netherlands): S. J. L. Bakker, J. van den Born, M. H. de Borst, H. van Goor, J. L. Hillebrands, B. G. Hepkema, G. J. Navis and H. Snieder.

References

1. Wekerle T, Segev D, Lechler R, Oberbauer R. Strategies for long-term preservation of kidney graft function. *The Lancet [Internet]* 2017; [cited 2017 Aug 15] 389: 2152–2162. Available from: <http://linkinghub.elsevier.com/retrieve/pii/S0140673617312837>
2. Jordan SC, Ammerman N, Choi J et al. The role of novel therapeutic approaches for prevention of allosensitization and antibody-mediated rejection. *American Journal of Transplantation* 2020; 20: 42–56.
3. Holdsworth SR, Can PY. Cytokines: Names and numbers you should care about [Internet]. *Clinical Journal of the American Society of Nephrology* 2015; [cited 2021 Jun 1] 10: 2243–2254. Available from: <https://pubmed.ncbi.nlm.nih.gov/25941193/>
4. Yang JYC, Sarwal MM. Transplant genetics and genomics. *Nature Reviews Genetics* 2017; 18: 309–326.
5. Israni AK, Li N, Cizman BB et al. Association of Donor Inflammation- and Apoptosis-Related Genotypes and Delayed Allograft Function After Kidney Transplantation. *American Journal of Kidney Diseases [Internet]* 2008; [cited 2021 Jun 1] 52: 331–339. Available from: <https://pubmed.ncbi.nlm.nih.gov/18640487/>
6. Wang H, Guan Q, Lan Z et al. Prolonged renal allograft survival by donor interleukin-6 deficiency: Association with decreased alloantibodies and increased intragraft T regulatory cells. *American Journal of Physiology - Renal Physiology [Internet]* 2012; [cited 2021 Jun 1] 302. Available from: <https://pubmed.ncbi.nlm.nih.gov/22031852/>
7. Sureshbabu A, Muhsin SA, Choi ME. TGF- β signaling in the kidney: Profibrotic and protective effects [Internet]. *American Journal of Physiology - Renal Physiology* 2016; [cited 2021 Jun 2] 310: F596–F606. Available from: <https://pubmed.ncbi.nlm.nih.gov/26739888/>
8. Gu YY, Liu XS, Huang XR, Yu XQ, Lan HY. Diverse Role of TGF- β in Kidney Disease [Internet]. *Frontiers in Cell and Developmental Biology* 2020; [cited 2021 Jun 1] 8: 123. Available from: www.frontiersin.org
9. Shi Y, Massagué J. Mechanisms of TGF- β signaling from cell membrane to the nucleus [Internet]. *Cell* 2003; [cited 2021 Jul 5] 113: 685–700. Available from: <https://pubmed.ncbi.nlm.nih.gov/12809600/>
10. Frangogiannis NG. Transforming growth factor- β in tissue fibrosis [Internet]. *Journal of*

- Experimental Medicine*2020; [cited 2021 Jun 1] 217. Available from:
[/pmc/articles/PMC7062524/](https://pubmed.ncbi.nlm.nih.gov/34812244/)
11. Budi EH, Schaub JR, Decaris M, Turner S, Derynck R. TGF- β as a driver of fibrosis: physiological roles and therapeutic opportunities. *The Journal of Pathology [Internet]* 2021; [cited 2021 Jun 15] 254: 358–373. Available from: www.thejournalofpathology.com
 12. Du C. Transforming Growth Factor-Beta in Kidney Transplantation: A Double-Edged Sword [Internet]. In: *Kidney Transplantation - New Perspectives*. InTech, 2011 [cited 2021 Jun 2]; Available from: www.intechopen.com
 13. Pribylova-Hribova P, Kotsch K, Lodererova A et al. TGF- β 1 mRNA upregulation influences chronic renal allograft dysfunction. *Kidney International [Internet]* 2006; [cited 2021 Jun 16] 69: 1872–1879. Available from: <https://pubmed.ncbi.nlm.nih.gov/16612332/>
 14. Einecke G, Reeve J, Sis B et al. A molecular classifier for predicting future graft loss in late kidney transplant biopsies. *Journal of Clinical Investigation [Internet]* 2010; [cited 2021 Jun 16] 120: 1862–1872. Available from: [/pmc/articles/PMC2877953/](https://pubmed.ncbi.nlm.nih.gov/20616344/)
 15. Lee SB, Kanasaki K, Kalluri R. Circulating TGF-B1 as a reliable biomarker for chronic kidney disease progression in the African-American population [Internet]. *Kidney International*2009; [cited 2021 Jun 21] 76: 10–12. Available from: <http://www.kidney-international.org/article/S0085253815538350/fulltext>
 16. Koesters R, Kaissling B, LeHir M et al. Tubular overexpression of transforming growth factor- β 1 induces autophagy and fibrosis but not mesenchymal transition of renal epithelial cells. *American Journal of Pathology [Internet]* 2010; [cited 2021 Jun 16] 177: 632–643. Available from: <https://pubmed.ncbi.nlm.nih.gov/20616344/>
 17. Shull MM, Ormsby I, Kier AB et al. Targeted disruption of the mouse transforming growth factor- β 1 gene results in multifocal inflammatory disease [14]. *Nature [Internet]* 1992; [cited 2021 Jun 21] 359: 693–699. Available from: <https://pubmed.ncbi.nlm.nih.gov/1436033/>
 18. Du X xiao, Guo Y liang, Yang M et al. Relationship of Transforming Growth Factor- β 1 and Arginase-1 Levels with Long-term Survival after Kidney Transplantation. *Current Medical Science [Internet]* 2018; [cited 2021 Jun 22] 38: 455–460. Available from: <https://doi.org/10.1007/s11596-018-1900-7>
 19. Eikmans M, Sijpkens YWJ, Baelde HJ, De Heer E, Paul LC, Bruijn JA. High transforming

- growth factor- β and extracellular matrix mRNA response in renal allografts during early acute rejection is associated with absence of chronic rejection. *Transplantation [Internet]* 2002; [cited 2021 Jun 22] 73: 573–579. Available from: <https://pubmed.ncbi.nlm.nih.gov/11889433/>
20. Viklicky O, Hribova P, Volk HD et al. Molecular phenotypes of acute rejection predict kidney graft prognosis. *Journal of the American Society of Nephrology [Internet]* 2010; [cited 2021 Jun 22] 21: 173–180. Available from: <https://pubmed.ncbi.nlm.nih.gov/19797166/>
 21. Höglund J, Rafati N, Rask-Andersen M et al. Improved power and precision with whole genome sequencing data in genome-wide association studies of inflammatory biomarkers. *Scientific Reports [Internet]* 2019; [cited 2021 Mar 27] 9. Available from: <https://pubmed.ncbi.nlm.nih.gov/32811111/>
 22. Ann Lim M, Bloom RD. Medical therapies to reduce delayed graft function and improve long-term graft survival are we making progress? [Internet]. *Clinical Journal of the American Society of Nephrology* 2020; [cited 2021 May 31] 15: 13–15. Available from: <https://doi.org/10.2215/CJN.13961119>
 23. Damman J, Daha MR, Leuvenink HG et al. Association of complement C3 gene variants with renal transplant outcome of deceased cardiac dead donor kidneys. *American journal of transplantation*: official journal of the American Society of Transplantation and the American Society of Transplant Surgeons [Internet] 2012; [cited 2015 Aug 11] 12: 660–668. Available from: <http://www.ncbi.nlm.nih.gov/pubmed/22176838>
 24. Poppelaars F, Gaya Da Costa M, Eskandari SK, Damman J, Seelen MA 5. Donor genetic variants in interleukin-6 and interleukin-6 receptor associate with biopsy-proven rejection following kidney transplantation. medRxiv [Internet] 2021; [cited 2021 May 31] : 2021.04.17.21255669. Available from: <https://doi.org/10.1101/2021.04.17.21255669>
 25. Auton A, Abecasis GR, Altshuler DM et al. A global reference for human genetic variation. *Nature* 2015; 526: 68–74.
 26. Abramowicz D, Oberbauer R, Heemann U et al. Recent advances in kidney transplantation: A viewpoint from the Descartes advisory board. *Nephrology Dialysis Transplantation* 2018; 33: 1699–1707.
 27. King EA, Wade Davis J, Degner JF. Are drug targets with genetic support twice as likely to be approved? Revised estimates of the impact of genetic support for drug mechanisms on the

- probability of drug approval. *PLoS Genetics* 2019; 15: e1008489.
28. Nelson MR, Tipney H, Painter JL et al. The support of human genetic evidence for approved drug indications. *Nature Genetics* 2015; 47: 856–860.
 29. Lacha J, Hribova P, Kotsch K et al. Effect of cytokines and chemokines (TGF- β , TNF- α , IL-6, IL-10, MCP-1, RANTES) gene polymorphisms in kidney recipients on posttransplantation outcome: Influence of donor-recipient match. In: *Transplantation Proceedings*. Elsevier USA, 2005; 764–766
 30. Awad MR, El-Gamel A, Hasleton P, Turner DM, Sinnott PJ, Hutchinson I V. Genotypic variation in the transforming growth factor- β 1 gene: Association with transforming growth factor- β 1 production, fibrotic lung disease, and graft fibrosis after lung transplantation. *Transplantation [Internet]* 1998; [cited 2021 Jun 1] 66: 1014–1020. Available from: <https://pubmed.ncbi.nlm.nih.gov/9808485/>
 31. Yokota M, Ichihara S, Lin TL, Nakashima N, Yamada Y. Association of a T29→C polymorphism of the transforming growth factor- β 1 gene with genetic susceptibility to myocardial infarction in japanese. *Circulation [Internet]* 2000; [cited 2021 Jun 1] 101: 2783–2787. Available from: <https://pubmed.ncbi.nlm.nih.gov/10859282/>
 32. Taubenschuß E, Marton E, Mogg M et al. The L10P polymorphism and serum levels of transforming growth factor β 1 in human breast cancer. *International Journal of Molecular Sciences [Internet]* 2013; [cited 2021 Jun 1] 14: 15376–15385. Available from: <https://pubmed.ncbi.nlm.nih.gov/23887657/>
 33. Du X xiao, Guo Y liang, Yang M et al. Relationship of Transforming Growth Factor- β 1 and Arginase-1 Levels with Long-term Survival after Kidney Transplantation. *Current Medical Science [Internet]* 2018; [cited 2021 Jun 1] 38: 455–460. Available from: <https://pubmed.ncbi.nlm.nih.gov/30074212/>
 34. Thakkinstian A, Dmitrienko S, Gerbase-DeLima M et al. Association between cytokine gene polymorphisms and outcomes in renal transplantation: A meta-analysis of individual patient data. *Nephrology Dialysis Transplantation [Internet]* 2008; [cited 2021 Jun 1] 23: 3017–3023. Available from: <https://pubmed.ncbi.nlm.nih.gov/18408074/>
 35. Ge YZ, Wu R, Lu TZ et al. Combined effects of TGFB1 +869 T/C and +915 G/C polymorphisms on acute rejection risk in solid organ transplant recipients: A systematic review

- and meta-analysis. PLoS ONE [Internet] 2014; [cited 2021 Jun 1] 9: e93938. Available from: www.plosone.org
36. Mytilineos J, Laux G, Opelz G. Relevance of IL10, TGF β 1, TNF α , and IL4R α gene polymorphisms in kidney transplantation: A collaborative transplant study report. American Journal of Transplantation [Internet] 2004; [cited 2021 Jun 1] 4: 1684–1690. Available from: <https://pubmed.ncbi.nlm.nih.gov/15367225/>
 37. Ming Chow K, Chun Szeto C, Poon P, Yan Lau W, Mac-Moune Lai F, Li PKT. Transforming growth factor- β 1 gene polymorphism in renal transplant recipients. Renal Failure [Internet] 2005; [cited 2021 Jun 1] 27: 671–675. Available from: <https://pubmed.ncbi.nlm.nih.gov/16350816/>
 38. Dhaouadi T, Sfar I, Bardi R et al. Cytokine gene polymorphisms in kidney transplantation. Transplantation Proceedings [Internet] 2013; [cited 2021 Jun 1] 45: 2152–2157. Available from: <https://pubmed.ncbi.nlm.nih.gov/23747182/>
 39. Boor P, Floege J. Renal allograft fibrosis: Biology and therapeutic targets [Internet]. American Journal of Transplantation 2015; [cited 2021 Jun 1] 15: 863–886. Available from: <https://pubmed.ncbi.nlm.nih.gov/25691290/>
 40. Isaka Y. Targeting TGF- β signaling in kidney fibrosis [Internet]. International Journal of Molecular Sciences 2018; [cited 2021 Jun 1] 19. Available from: <https://pubmed.ncbi.nlm.nih.gov/30150520/>
 41. Vincenti F, Fervenza FC, Campbell KN et al. A Phase 2, Double-Blind, Placebo-Controlled, Randomized Study of Fresolimumab in Patients With Steroid-Resistant Primary Focal Segmental Glomerulosclerosis. Kidney International Reports 2017; 2: 800–810.
 42. Voelker J, Berg PH, Sheetz M et al. Anti-TGF-b1 antibody therapy in patients with diabetic nephropathy [Internet]. In: Journal of the American Society of Nephrology. American Society of Nephrology, 2017 [cited 2021 Jun 1] ; 953–962 Available from: www.jasn.org
 43. Kotlarz D, Marquardt B, Barøy T et al. Human TGF- β 1 deficiency causes severe inflammatory bowel disease and encephalopathy. Nature Genetics [Internet] 2018; [cited 2021 Jun 2] 50: 344–348. Available from: <https://pubmed.ncbi.nlm.nih.gov/29483653/>
 44. Guan Q, Nguan CYC, Du C. Expression of transforming growth factor- β 1 limits renal ischemia-reperfusion injury. Transplantation [Internet] 2010; [cited 2021 Jun 2] 89: 1320–1327. Available

from: <https://pubmed.ncbi.nlm.nih.gov/20458271/>

45. Chen L, Feng X, Wang Y et al. Study of the role of transforming growth factor β -1 in organ damage protection in porcine model of brain death. *Transplantation Proceedings [Internet]* 2016; [cited 2021 Jun 2] 48: 205–209. Available from:
<https://pubmed.ncbi.nlm.nih.gov/26915869/>
46. Luo X, Yang H, Kim IS et al. Systemic transforming growth factor- β 1 gene therapy induces Foxp3+ regulatory cells, restores self-tolerance, and facilitates regeneration of beta cell function in overtly diabetic nonobese diabetic mice [Internet]. In: *Transplantation. Transplantation, 2005* [cited 2021 Jun 2] ; 1091–1096 Available from:
<https://pubmed.ncbi.nlm.nih.gov/15880049/>
47. Watson D, Zhang GY, Hu M et al. Transforming growth factor beta (TGF β) plays a crucial role in prolonging allograft survival in an allodepletion (“pruning”) skin transplant model. *Transplant Immunology [Internet]* 2014; [cited 2021 Jun 2] 30: 168–177. Available from:
<https://pubmed.ncbi.nlm.nih.gov/24746800/>

Tables

Table 1: Baseline characteristics of the donors and recipients

	All Patients (n = 1271)	Functioning graft (n = 1066)	Graft loss (n = 205)	P-value*	HR	P-value#
Donor						

TGFB1 SNP	CC, n (%)	1229 (97.0)	1027 (97.4)	202 (94.8)	0.042	2.13	0.015
	CT, n (%)	38 (3.0)	27 (2.6)	11 (5.2)			
Age, years		44.4 ± 14.4	44.1 ± 14.6	46.1 ± 13.4	0.048	1.02	0.001
Male sex, n (%)		645 (50.7)	536 (50.7)	109 (50.9)	0.51		0.91
Blood group							
Type O, n (%)		642 (50.5)	541 (51.3)	101 (47.4)	0.034	0.39	0.004
Type A, n (%)		502 (39.5)	415 (39.3)	87 (40.8)		0.42	0.009
Type B, n (%)		97 (7.6)	82 (7.8)	15 (7.0)		0.36	0.012
Type AB, n (%)		27 (2.1)	17 (1.6)	10 (4.7)		Ref	0.036
Donor type							
Living, n (%)		282 (22.2)	258 (24.4)	24 (11.2)	<0.001	2.01	0.001
Brain death, n (%)		787 (61.9)	642 (60.7)	145 (67.8)			
Circulatory death, n (%)		202 (15.9)	157 (14.9)	45 (21.0)			
Recipient							
TGFB1 SNP	CC, n (%)	1221 (96.2)	1017 (96.4)	204 (95.3)	0.45		0.21
	CT, n (%)	48 (3.8)	38 (3.6)	10 (4.7)			
Age, years		47.9 ± 13.5	48.5 ± 13.4	44.9 ± 13.2	<0.001	0.99	0.022
Male sex, n (%)		739 (58.1)	607 (57.4)	132 (61.7)	0.25		0.17
Primary kidney disease							
Glomerulonephritis, n (%)		340 (26.8)	271 (25.6)	69 (32.2)	0.28		0.45
Polycystic disease, n (%)		208 (16.4)	188 (17.8)	20 (9.3)			
Vascular disease, n (%)		145 (9.9)	123 (11.6)	22 (10.3)			
Pyelonephritis, n (%)		148 (11.4)	120 (11.4)	28 (13.1)			
Diabetes, n (%)		51 (4.0)	44 (4.2)	7 (3.3)			
Chronic, n (%)		168 (13.2)	134 (12.7)	34 (15.9)			
Other, n (%)		211 (16.6)	177 (16.7)	34 (15.9)			
Blood group							
Type O, n (%)		567 (44.6)	474 (44.8)	93 (43.5)	0.004	0.46	0.002
Type A, n (%)		536 (42.2)	449 (42.5)	87 (40.7)		0.46	0.002
Type B, n (%)		113 (8.9)	98 (9.3)	15 (7.0)		0.35	0.003
Type AB, n (%)		55 (4.3)	36 (3.4)	19 (8.9)		Ref	0.007
Dialysis vintage, weeks		172 [91 – 263]	174 [87 – 261]	168 [109 – 270]	0.15		0.09
Highest PRA, in %		10.1 ± 23.6	10.0 ± 23.3	10.8 ± 25.0	0.63		0.79
Immunosuppression							
Anti-CD3 Moab, n (%)		19 (1.5)	14 (1.3)	5 (2.3)	0.26		0.50
Azathioprine, n (%)		72 (5.7)	53 (5.0)	19 (8.9)	0.026		0.29
ATG, n (%)		103 (8.1)	79 (7.5)	24 (11.2)	0.07		0.14
Corticosteroids, n (%)		1201 (94.5)	1003 (94.9)	198 (92.5)	0.17	0.51	0.01
Cyclosporin, n (%)		1085 (85.4)	912 (86.3)	173 (80.8)	0.04	0.66	0.015
Interleukin-2 RA, n (%)		199 (15.7)	163 (15.4)	36 (16.8)	0.61		0.12
Mycophenolic acid, n (%)		907 (71.4)	776 (73.4)	131 (61.2)	<0.001		0.12
Sirolimus, n (%)		38 (3.0)	33 (3.1)	5 (2.3)	0.54		0.54
Tacrolimus, n (%)		97 (7.6)	77 (7.3)	20 (9.3)	0.30		0.38
Transplantation							
CIT, in hours		17.7 [10.9 – 23.0]	17.0 [8.2 – 23.0]	20.0 [15.4 – 25.0]	<0.001	1.03	0.001
WIT, in minutes		37.0 [31 – 45]	37.0 [30 – 45]	38.0 [32 – 45]	0.14	4.18	0.012
Total HLA mismatches		2 [1 – 3]	2 [1 – 3]	2 [1 – 3]	0.48		0.11
DGF, n (%)		415 (32.7)	289 (27.3)	126 (58.9)	<0.001	3.84	<0.001
Biopsy-proven rejection, n (%)					N/A		N/A

Data are displayed as mean ± standard deviation for parametric variables; median [IQR] for non-parametric variables, and nominal data as the total number of patients with the corresponding percentage [n (%)]. *TGFB1*, transforming growth factor-beta 1 gene; *PRA*, panel-reactive antibody; *CD3*, cluster of differentiation 3; *ATG*, Anti-thymocyte globulin; *RA*, receptor antagonist; *CIT*, cold ischemia time; *WIT*, warm ischemia time; *HLA*, human leukocyte antigen; *DGF*, delayed graft function. Bold

values are used to show which testing was statistically significant (P -value < 0.05)

P -value* indicates the P -value for the differences in baseline characteristics between the groups, tested by Student's t -test or Mann–Whitney U test for continuous variables and with χ^2 test for categorical variables.

P -value# indicates the P -value for univariable analysis with 15-year death censored graft survival.

Table 2

Associations of *TGFB1* polymorphism in the donor with graft loss after kidney transplantation.

	<i>TGFB1</i> SNP (rs1800472-T) in the donor		
	Hazard ratio (CT vs CC)	95% CI	P-value
Model 1	2.13	1.16 – 3.90	0.015
Model 2	2.23	1.21 – 4.10	0.010
Model 3	2.25	1.22 – 4.16	0.010
Model 4	2.01	1.06 – 3.82	0.032

Data are presented as a hazard ratio with 95% confidence interval (CI) and *P*-value.

Model 1: Crude model.

Model 2: Adjusted for model 1 plus donor characteristics: donor age, donor sex, donor blood type, and donor origin.

Model 3: Adjusted for model 1 plus recipient characteristics: recipient age, recipient sex, recipient blood type and dialysis vintage.

Model 4: Adjusted for model 1 plus transplant characteristics: cold and warm ischemia time, the total HLA-mismatches, and the occurrence of delayed graft function (DGF).

Table 3

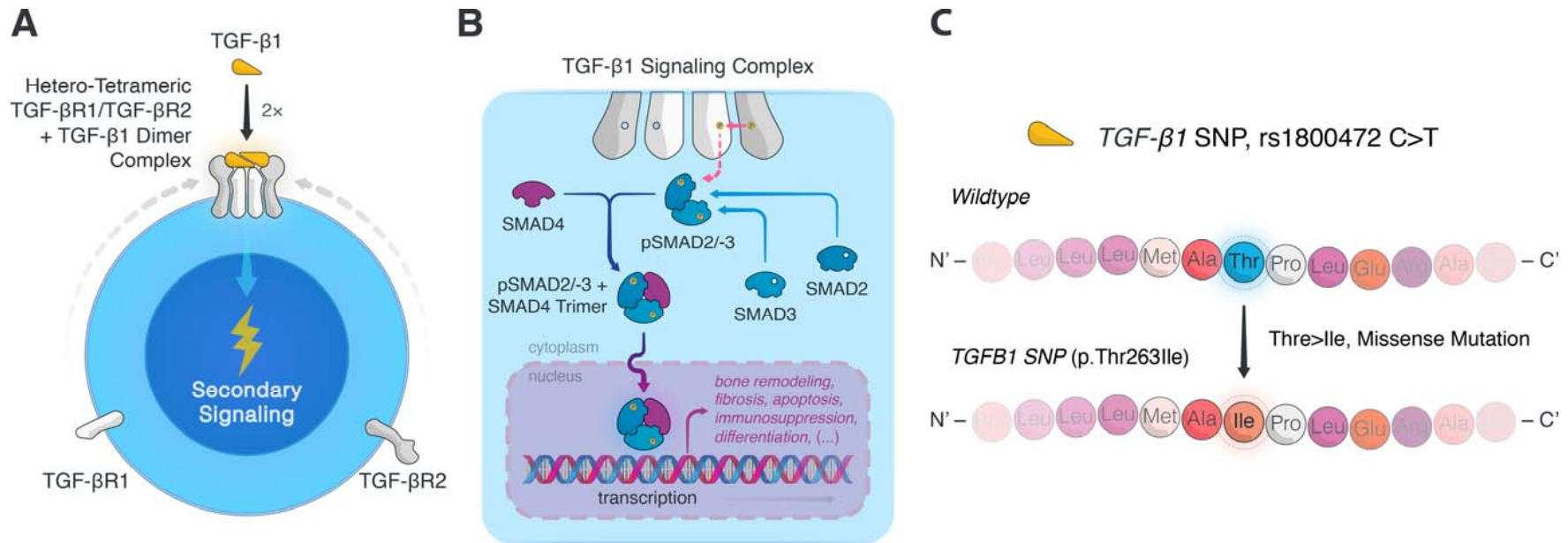
Competitive analysis of the associations of characteristics with graft loss after kidney transplantation.

Variables not in the equation		Variables in the equation		
Variables	P-value	Variables	P-value	Hazard Ratio
Dialysis blood type (<i>ABO versus other</i>)	1.00	rs1800472-T in the donor (<i>CT versus CC</i>)	0.020	2.07 (1.21 – 3.82)
Donor type (<i>living versus deceased</i>)	0.11	Donor age (<i>in years</i>)	0.004	1.02 (1.01 – 1.03)
Cold ischemia time (<i>in hours</i>)	0.11	Recipient age (<i>in years</i>)	<0.001	0.98 (0.97 – 0.99)
Warm ischemia time (<i>in minutes</i>)	0.08	Recipient blood type (<i>ABO versus other</i>)	0.001	
Corticosteroids	0.12	Delayed graft function (<i>yes versus no</i>)	<0.001	4.06 (3.06 – 5.39)
Cyclosporin	0.33			

Multivariable cox regression was performed for kidney graft survival with a stepwise forward selection. Only variables that with a *P*-value below 0.05 in the univariate analysis were included. Data are presented as a hazard ratio with a 95% confidence interval (CI) and *P*-value. In the final model, the *TGFB1* SNP (rs1800472-T) in the donor, donor age, recipient age, recipient blood type and the occurrence of delayed graft function were included, whereas dialysis vintage, cold ischemia time, warm ischemia time, donor blood type, donor type, and use of corticosteroids and cyclosporin were not.

Figures

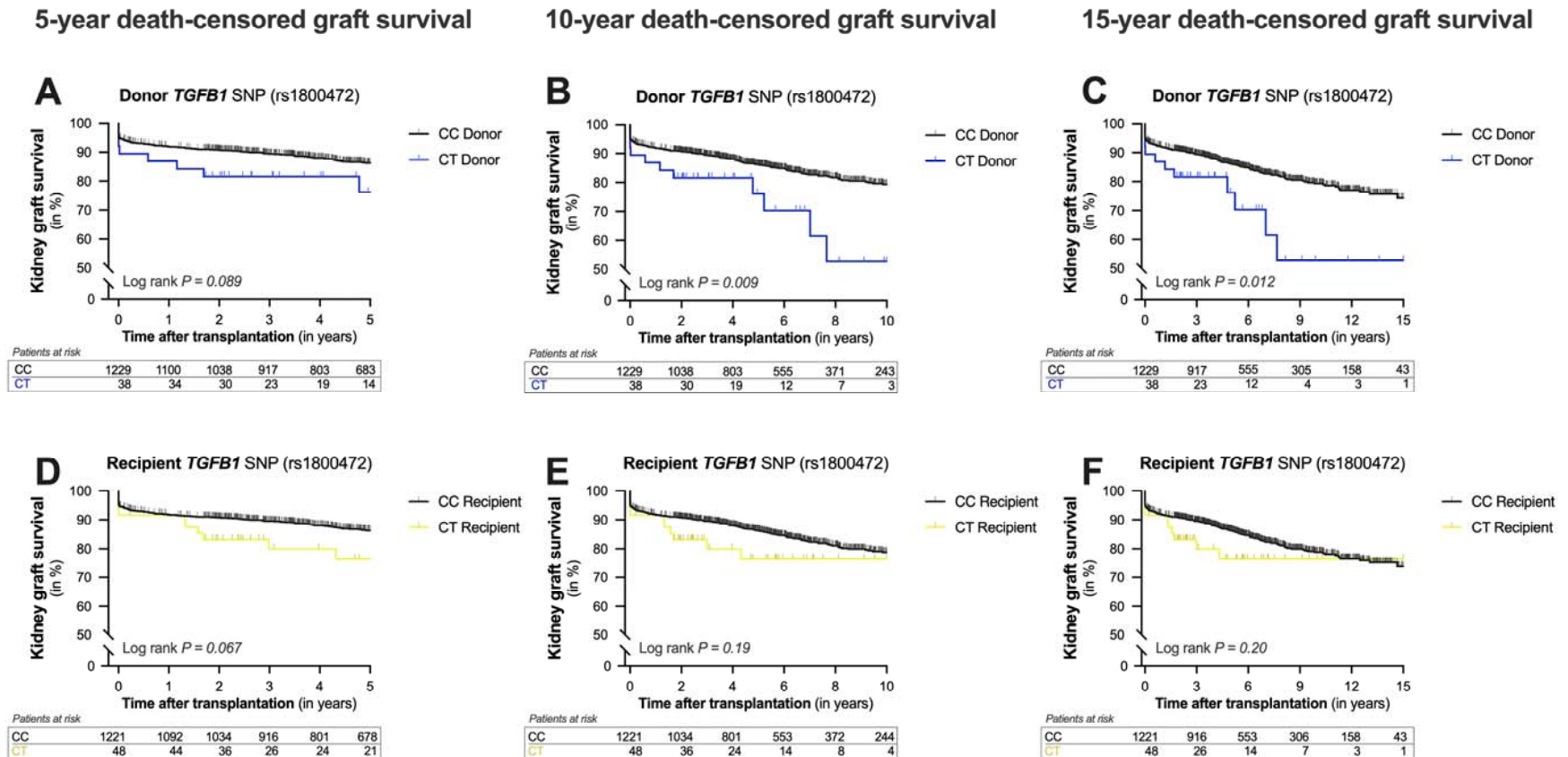
Figure 1.
TGF- β 1 signaling pathway and examined *TGFB1* Thr263Ile gene variant.



(A) TGF- β 1 signaling occurs when TGF- β 1 forms a complex with surface-bound TGF- β receptors 1 and 2 (TGF- β R1 and TGF- β R2 respectively). Specifically, two heterodimers of TGF- β R1/TGF- β R2 coalesce in the presence of dimeric TGF- β 1, resulting in hetero-tetrameric complex. (B) The proximity of the intracytoplasmic tails of TGF- β R2 initiates the sequential phosphorylation of TGF- β R1 and the SMAD signal transducers, SMAD2 and -3. (Of note, although it is uncommon, following TGF- β R1 phosphorylation non-SMAD-mediated signaling can also occur.) Once SMAD2/-3 has formed a dimeric unit, it can bind SMAD4, leading to nuclear translocation of the trimeric pSMAD2/-3 and SMAD4 complex. Inside the nucleus, the trimeric complex elicits transcription of TGF- β target genes, resulting in a myriad of cellular responses from bone remodeling to fibrosis, to apoptosis and immunosuppression. (C) To appreciate the potential role of *TGFB1*-related SNPs in kidney transplant recipients and donor transplant kidneys, we assessed the association between transplant survival outcomes and the *TGFB1* SNP rs1800472C>T, which causes a missense mutation (p.Thr263Ile) in TGF- β 1. Ile, isoleucine; SMAD, mothers against decapentaplegic homologue; TGF- β , transforming growth factor beta; TGF- β R, transforming growth factor beta receptor; Thr, threonine.

Figure 2.

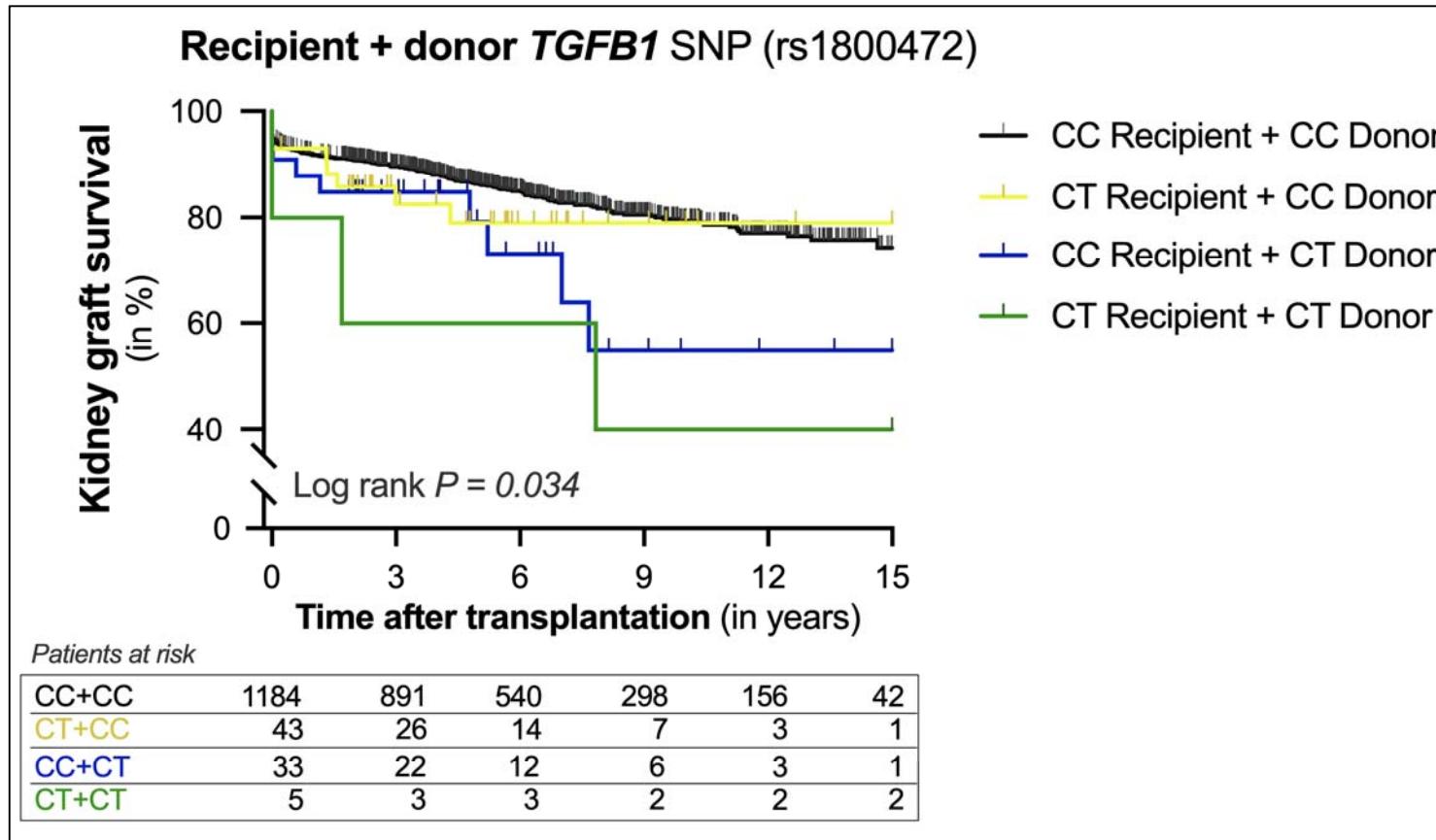
Kaplan-Meier curves for 5, 10, 15-year death-censored graft survival after kidney transplantation according to the presence of the *TGFB1* variant in the donor and recipient.



Cumulative 5- (A, D), 10- (B, E), and 15-year (C, F) death-censored kidney graft survival according to the presence of the Thr263Ile variant in the transforming growth factor beta 1 gene (*TGFB1*, rs1800472 C>T) in the donor (A – C, blue line) and the recipient (D – F, yellow line).

Figure 3.

Kaplan-Meier curves for 15-year death-censored graft survival after kidney transplantation according to the presence of the *TGFB1* variant in the



donor and recipient.

Cumulative 15-year death-censored kidney graft survival according to the presence of the Thr263Ile variant in the transforming growth factor beta 1 gene (*TGFB1*, rs1800472 C>T) in donor-recipient pairs. Pairs were divided into four groups according to the absence (black line) or presence of the T-allele in the recipient (yellow line), donor (blue line) or both (green line). Log-rank test was used to compare the incidence of graft loss between the groups.

1 **Supplementary Data**

2

3 **Table S1.**

4 **Genotype frequency and hazard ratios for delayed graft function and acute biopsy-proven**
 5 **rejection for TGBF1 genotypes**

<i>TGFB1</i>	Delayed graft function		Immediate graft function		<i>P</i> -value ^a	Odds ratio (95%-CI)	<i>P</i> -value ^b
	CT	CC	CT	CC			
<i>rs1800472</i>							
<i>Donor</i>	14 (3.4%)	400 (96.6%)	24 (2.8%)	829 (97.2%)	0.58	1.21 (0.61 – 2.36)	0.58
<i>Recipient</i>	22 (5.3%)	393 (94.7%)	26 (3.0%)	828 (97.0%)	0.048	1.78 (1.00 – 3.19)	0.051
	Acute rejection		No rejection		<i>P</i> -value ^a	Hazard ratio (95%-CI)	<i>P</i> -value ^c
<i>rs1800472</i>	CT	CC	CT	CC			
<i>Donor</i>	13 (3.0%)	417 (97.0%)	25 (3.0%)	812 (97.0%)	0.97	1.04 (0.60 – 1.80)	0.90
<i>Recipient</i>	12 (2.8%)	420 (97.2%)	36 (4.3%)	801 (95.7%)	0.18	1.21 (0.61 – 2.36)	0.19

6
 7 ^a *P*-value for the Pearson Chi-square test for differences in the genotype frequency.

8 ^b *P*-value for univariate logistic regression analysis for differences in the incidence of delayed graft
 9 function.

10 ^c *P*-value for univariate Cox regression analysis for differences in the incidence of biopsy-proven acute
 11 rejection.