

1 **Determinants of primaquine and carboxyprimaquine exposures in children and adults with**
2 ***Plasmodium vivax* malaria**

3 Running title: **Primaquine exposures in vivax malaria**

4
5 Cindy S Chu^{1,2}, James A Watson^{2,3,*}, Aung Pyae Phyo¹, Htun Htun Win¹, Widi Yotyingaphiram¹, Suradet
6 Thinraow¹, Nay Lin Soe¹, Aye Aye Aung¹, Pornpimon Wilaisrisak¹, Kanokpich Puaprasert⁴, Mallika Imwong⁴,
7 Warunee Hanpithakpong³, Daniel Blessborn^{2,3}, Joel Tarning^{2,3}, Stéphane Proux¹, Clare Ling^{1,2}, François H
8 Nosten^{1,2}, Nicholas J White^{2,3}

9
10 ¹ Shoklo Malaria Research Unit, Mahidol–Oxford Tropical Medicine Research Unit, Faculty of Tropical
11 Medicine, Mahidol University, Mae Sot, Thailand

12 ² Centre for Tropical Medicine and Global Health, Nuffield Department of Medicine, University of
13 Oxford, Oxford, UK

14 ³ Mahidol–Oxford Tropical Medicine Research Unit, Faculty of Tropical Medicine, Mahidol University,
15 Bangkok, Thailand

16 ⁴ Department of Molecular Tropical Medicine and Genetics, Faculty of Tropical Medicine, Mahidol
17 University, Bangkok, Thailand.

18
19

20 Keywords: *Plasmodium vivax*, primaquine, pharmacokinetics, relapse, chloroquine,
21 dihydroartemisinin-piperaquine

22

23 *Corresponding author: james@tropmedres.ac

24 **Abstract**

25 *Background*

26 Primaquine is the only widely available drug for radical cure of *Plasmodium vivax* malaria. There
27 is uncertainty whether the pharmacokinetic properties of primaquine are altered significantly in
28 childhood or not.

29 *Methods*

30 Glucose-6-phosphate dehydrogenase normal patients with uncomplicated *P. vivax* malaria were
31 randomized to receive either chloroquine (25mg base/kg) or dihydroartemisinin-piperaquine
32 (dihydroartemisinin 7mg/kg and piperaquine 55mg/kg) plus primaquine; given either as 0.5 mg
33 base/kg/day for 14 days or 1 mg/kg/day for 7 days. Pre-dose day 7 venous plasma
34 concentrations of chloroquine, desethylchloroquine, piperaquine, primaquine and
35 carboxyprimaquine were measured. Methemoglobin levels were measured either daily or on
36 days 1, 3, 6 and 13, and additionally on day 10 in the primaquine 14-day groups.

37 *Results*

38 Day 7 primaquine and carboxyprimaquine concentrations were available for 641 patients. After
39 adjustment for the primaquine mg/kg daily dose, day of sampling, partner drug, and fever
40 clearance, there was a significant non-linear relationship between age and trough primaquine
41 and carboxyprimaquine concentrations, and day methemoglobin levels. Compared to adults 30
42 years of age, children 5 years of age had trough primaquine concentrations 0.53 (95% CI: 0.39-
43 0.73) fold lower, trough carboxyprimaquine concentrations 0.45 (95% CI: 0.35- 0.55) fold lower,
44 and day 7 methemoglobin levels 0.87 (95% CI: 0.58-1.27) fold lower. Increasing concentrations
45 of piperaquine and chloroquine and poor metabolizer *CYP 2D6* alleles were associated with

46 higher day 7 primaquine and carboxyprimaquine concentrations. Higher blood methemoglobin
47 concentrations were associated with a lower risk of recurrence.

48 Conclusion

49 Young children have lower primaquine and carboxyprimaquine exposures, and lower levels of
50 methemoglobinemia, than adults. Young children may need higher weight adjusted primaquine
51 doses than adults.

52 Introduction

53 Primaquine is used for radical cure of *Plasmodium vivax* and *Plasmodium ovale* malaria, for
54 antimalarial chemoprophylaxis and as a single dose gametocytocide in *Plasmodium falciparum*
55 malaria (1). Although the slowly eliminated 8-aminoquinoline tafenoquine has been registered
56 in a few countries for radical cure or chemoprophylaxis in adults, and pamaquine and quinocide
57 were once used, primaquine is by far the most widely deployed drug in this class. It is generally
58 agreed that the dosing of antimalarial chemotherapy should be designed to provide equivalent
59 exposures to the active antimalarial across the age range (1). There is uncertainty whether or not
60 children have lower exposures to primaquine and its bioactive metabolites than adults for the
61 same weight adjusted doses, and thus whether they should receive higher doses than currently
62 recommended (2–5). Primaquine is combined with either an artemisinin combination treatment
63 (ACT) or chloroquine to prevent relapse of vivax or ovale malaria (radical cure) (1). Primaquine is
64 a pro-drug requiring metabolism to bioactive metabolites mainly via the liver cytochrome P450
65 isoenzyme *CYP 2D6* (6). The prevalence of intermediate and non-functioning *CYP 2D6* alleles is
66 over 50% in some populations, particularly in Asians (7–9). Decreased *CYP 2D6* function, resulting
67 from intermediate or poor metabolizer genotypes, potentially lowers radical cure efficacy (10,
68 11).

69 Chloroquine has been the first-line treatment for the blood stages of *P. vivax* malaria for over 70
70 years (1). High grade resistance in *P. vivax* remains confined to Oceania and Indonesia (12) but,
71 in the last decade, low grade chloroquine resistance, manifest by earlier appearance of relapses,
72 has been reported increasingly in other locations. Piperaquine (a slowly eliminated bisquinoline),
73 combined with dihydroartemisinin, is a well-tolerated and highly efficacious ACT which provides

74 an excellent alternative blood stage treatment for *P. vivax* malaria (13). An open label two-way
75 randomized controlled trial, conducted on the Thailand-Myanmar border, showed previously
76 that a 7-day high dose primaquine regimen (1 mg/kg/day), combined either with chloroquine or
77 dihydroartemisinin-piperaquine, was non-inferior to the standard 14-day (0.5 mg/kg/day)
78 regimen (14). This large study allowed investigation of the pharmacokinetic properties of
79 primaquine in adults and children, characterization of the determinants of drug exposures, and
80 correlation with therapeutic outcomes.

81 Methods

82 Clinical trial

83 This study was conducted by the Shoklo Malaria Research Unit (SMRU), which is located on the
84 northwest Thailand-Myanmar border. Full details of the study have been reported previously
85 (14). In brief, patients who presented to an outpatient clinic with microscopy confirmed
86 uncomplicated *P. vivax* mono-infections were enrolled if they were ≥ 6 months old, and if they
87 were glucose-6-phosphate dehydrogenase (G6PD) normal by the fluorescent spot test. Patients
88 were excluded if they were pregnant or breastfeeding an infant ≤ 6 months, had a hematocrit
89 $\leq 25\%$, or had received a blood transfusion within 3 months. Written informed consent was
90 obtained from patients or from parents or carers of children below 18 years old.

91 Patients were randomized 1:1:1:1 to each of the following groups:

- 92 1. Chloroquine (10 mg base/kg on the first two days of treatment, then 5 mg base/kg on day
93 3; Remedica, Ltd., Cyprus) and primaquine (1 mg base/kg/day for 7 days; Government
94 Pharmaceutical Organization, Thailand)

- 95 2. Chloroquine as above and primaquine (0.5 mg base/kg/day for 14 days)
- 96 3. Dihydroartemisinin-piperaquine (dihydroartemisinin 7 mg/kg and piperaquine 55 mg/kg
- 97 for 3 days; Guilin Pharmaceutical company, China) and primaquine (1 mg base/kg/day for
- 98 7 days)
- 99 4. Dihydroartemisinin-piperaquine as above plus primaquine (0.5 mg base/kg/day for 14
- 100 days)

101 Food and drink were given before drug administration. Primaquine was usually started on the

102 same day as the schizonticide (i.e. the first day of treatment) but in a subset of patients it was

103 started on the third day of treatment. Patients were assessed daily while on treatment.

104 Methemoglobin was measured either daily or on days 1, 3, 6 and 13, and additionally on day 10

105 in the primaquine 14-day groups, using a transcutaneous pulse oximeter (Masimo Radical-7®).

106 One recruitment clinic did not have access to a transcutaneous oximeter, so 80 study patients

107 did not have methemoglobin measurements. All drug doses were supervised.

108 A venous blood sample for antimalarial drug levels was taken before drug administration on day

109 6 (i.e. the 7th day of treatment) +/- 2 days, and plasma was separated and stored at -70°C. Patients

110 were followed at weeks 2 and 4, and then every 4 weeks until 52 weeks. If there was a *P. vivax*

111 recurrence then a venous plasma blood sample for drug levels was taken again. Standard high

112 dose primaquine (0.5 mg base/kg/day for 14 days) and chloroquine were given for the treatment

113 of recurrences. Follow-up was re-started as if newly recruited, and day 6 sampling for drug levels

114 was collected again. The total study duration was 52 weeks from enrolment.

115 Drug measurements

116 Chloroquine/desethylchloroquine, piperaquine, and primaquine/carboxyprimaquine plasma
117 concentrations were measured using three validated liquid chromatography (LC) – tandem mass
118 spectrometry (MS/MS) methods (15–17). The lower limits of quantification (LLOQ) were set to
119 1.4, 1.5, 1.14 and 4.88 ng/mL for chloroquine/desethylchloroquine, piperaquine, primaquine and
120 carboxyprimaquine, respectively. All three quantification methods were validated according to
121 regulatory standards and three levels of quality control samples were analyzed in triplicate within
122 each batch of clinical samples. Total imprecision (i.e. relative standard deviation) for all quality
123 control samples was below 10% during drug quantification.

124 *CYP 2D6* genotyping

125 We carried out a nested case-control genotyping study to assess the effect of *CYP 2D6*
126 polymorphisms on recurrent vivax malaria. Cases were all patients with a recorded recurrent
127 episode of vivax malaria during follow-up and controls were patients without observed
128 recurrences matched by age and sex (in total n=158 patients). The *CYP 2D6* gene
129 duplications/multiplications and gene deletions were determined by extra-long range
130 polymerase chain reaction (XL-PCR) using a previously published protocol (18). The functional
131 *CYP 2D6* and nonfunctional *CYP2D8* and *CYP2D7* genes were then differentiated by intron 2
132 sequencing (INT2). The variants *1, *2, *4, *5, *10, *39, and *36 were identified with rapid
133 identification of four polymorphic loci by allele-specific oligonucleotide probes using real-time
134 SNPs genotyping. From the *CYP 2D6* genotyping result the *CYP 2D6* “activity score” was obtained
135 as described previously (15, 19–21).

136 Ethics approval

137 This study was approved by both the Mahidol University Faculty of Tropical Medicine Ethics
138 Committee (MUTM 2011-043, TMEC 11-008) and the Oxford Tropical Research Ethics
139 Committee (OXTREC 17-11) and was registered at ClinicalTrials.gov (NCT01640574).

140 Statistical analysis

141 All drug concentration data were analyzed on the log base 10 scale. Three main generalized
142 additive linear regression models were fitted to the \log_{10} primaquine day 7 concentrations; the
143 \log_{10} carboxyprimaquine concentrations; and the \log_{10} carboxyprimaquine to primaquine ratios.
144 We used the following predictors age (years), mg/kg daily dose of primaquine (the administered
145 mg/kg dose not the target dose), study arm (DHA-piperaquine versus chloroquine), fever
146 clearance time (days), the number of days since start of primaquine dosing (6 versus 4), and the
147 time since the previous primaquine dose (in hours). We excluded drug measurements taken
148 outside of a 18-30 hour window after the previous dose (only trough levels approximately one
149 day after dosing), except for those for which the previous dose was given less than 30 minutes
150 before the drug measurement. More than 90% of samples were taken in this window
151 (Supplementary Figure 1). A smooth spline term with 3 degrees of freedom was used to estimate
152 non-linear effects of age. Individual random intercept terms were specified to account for
153 multiple day 7 measurements in the same patient. To assess any residual effect of *CYP 2D6*
154 diplotypes, we fitted linear regression models to the model residual concentrations with the *CYP*
155 *2D6* activity score as a linear predictor. To estimate the effect of the partner drug concentrations
156 (not available for every day 7 measurement), we fitted separate generalized additive regression
157 models to the primaquine and carboxyprimaquine \log_{10} concentrations with either the \log_{10}

158 chloroquine+desethylchloroquine (assuming equal antimalarial activities of parent drug and
159 metabolite and designated as 'chloroquine' in the remainder of the paper) concentration or the
160 \log_{10} piperavaquine concentration as additional predictors.

161 We fitted a generalized additive regression model to the day 7 blood methemoglobin
162 concentrations (expressed as a percentage of the hemoglobin concentration) with age, mg/kg
163 daily dose of primaquine, study arm (DHA-piperavaquine versus chloroquine), fever clearance time
164 (days), and days since start of primaquine dosing as predictors. A spline term with 3 degrees of
165 freedom was fit to age. Secondary models included the *CYP 2D6* activity score (available only for
166 the subset of patients in the nested case control investigation) as an additional covariate, both
167 on the linear scale and as a binary covariate (≤ 0.5 versus > 0.5). The activity score has an arbitrary
168 scale so it is unclear how best to encode it in regression models (i.e. an activity score of 2 versus
169 1 is not the same as 1 versus 0).

170 We fitted Cox proportional hazard models to the time to first recurrence (right censored event
171 for patients who did not have a recurrence during follow-up), with continuous predictors: age,
172 partner schizonticidal drug (chloroquine versus piperavaquine), and either the \log_{10} primaquine or
173 the \log_{10} carboxyprimaquine day 7 concentration (they are highly co-linear so we fitted two
174 separate models). Additional models included the day 7 methemoglobin levels as an additional
175 predictor (measured in all sites except the one where a transcutaneous pulse oximeter was not
176 available).

177 The generalized additive models were fitted in R version 4.0.2 using the package *mgcv* version
178 1.8. The Cox proportional hazard model used the *survival* package version 3.2. Code in the form

179 of an RMarkdown script along with all analyzed data are available on an accompanying github
180 repository for full reproducibility (https://github.com/jwatowatson/Primaquine_day7).

181 **Results**

182 Between February 2012 and July 2014, 680 patients with uncomplicated acute *P. vivax* malaria
183 were enrolled. In total 641 patients had at least one day 7 plasma primaquine and
184 carboxyprimaquine concentration measured, either during the enrollment episode or during a
185 recurrent *P. vivax* episode (there were a total of 720 episodes with day 7 concentrations including
186 patients with multiple episodes). For 692 of these day 7 concentrations, the corresponding
187 plasma chloroquine or piperazine concentration was also available (measured from the same
188 blood sample). We excluded 41 drug measurements considered not to be trough levels (see
189 Methods) resulting in a total of 679 day 7 measurements included in the analysis.

190 In total, 71 of the patients with measured primaquine and carboxyprimaquine concentrations
191 were 6 to ≤ 10 years of age (median weight 20kg, range 13-30kg), and 34 were ≤ 5 years of age
192 (median weight 14kg, range 8-20kg) (Table 1). Three patients were less than 3 years old, and the
193 youngest was 1 year 6 months old. Fever and parasite clearance times were similar across all age
194 groups. The proportion of patients with microscopy detected gametocytemia was higher in the
195 older age groups >10 years.

196 **Effect of age**

197 After adjustment for the daily mg/kg primaquine dose, the number of days of dosing, the fever
198 clearance times, and the partner drug (piperazine versus chloroquine), there was a significant
199 non-linear association between age and day 7 primaquine trough concentration ($p < 10^{-16}$ for the

200 smooth spline term fit to age) and day 7 carboxyprimaquine trough concentration ($p < 10^{-16}$ for
201 the smooth spline term fit to age) (Figure 1). For both primaquine and carboxyprimaquine,
202 increasing age correlated with higher trough levels. The strongest effect was seen for the
203 carboxyprimaquine trough levels. Thus the ratio of carboxyprimaquine to primaquine was also
204 associated with age, with an approximate doubling when comparing patients aged ≤ 5 years
205 versus patients 30 years or older (Figure 1).

206 Effect of partner drug

207 Our previously reported healthy volunteer studies showed that co-administration of piperazine
208 and chloroquine both increased exposures to primaquine and carboxyprimaquine (15, 16). In this
209 study of patients with vivax malaria, a ten-fold increase in the chloroquine day 7 concentration
210 was associated with a 2.5 fold increase in day 7 primaquine concentrations (95% CI: 1.9 to 3.1;
211 $p = 0.0003$), and a 2.0 fold increase in day 7 carboxyprimaquine concentrations (95% CI: 1.7 to 2.4;
212 $p = 0.0002$). A ten-fold increase in the piperazine day 7 concentrations was associated with a 2.5
213 fold increase in primaquine concentrations (95% CI: 1.9 to 3.2; $p = 0.0005$), and a 2.5 fold increase
214 in carboxyprimaquine concentrations on day 7 (95% CI: 2.1 to 3.0; $p = 10^{-7}$). Scatterplots showing
215 the univariate relationships between the partner drug concentrations and
216 primaquine/carboxyprimaquine concentrations are shown in Supplementary Figure 2. Treatment
217 with chloroquine or piperazine had no statistically significant effect on the
218 carboxyprimaquine/primaquine ratios.

219 Effect of *CYP 2D6* genotypes

220 *CYP 2D6* genotypes were determined in 154 patients. The estimated *CYP 2D6* allele frequencies
221 in this population were as follows: 25% for *1; 23% for *2; 2% for *4; 10% for *5; 38% for *10;
222 0.5% for *39; and 1% for *36. Alleles *4, *5, and *36 are considered null-metabolizer alleles
223 (enzyme activity score of 0); *10 is a poor metabolizer allele (activity score of 0.25); and *1 and
224 *39 are normal metabolizer alleles (activity score of 1). In total, there were 3 patients with an
225 activity score of 0 (non-metabolizers) and 36 patients with activity scores of either 0.25 or 0.5
226 (poor metabolizers). For primaquine day 7 plasma concentrations, model residuals (defined as
227 the observed concentration minus the predicted concentration, both on the log scale, where the
228 model is based on age, mg/kg dose, fever clearance, time since last dose, number of days of
229 dosing, and partner drug), were correlated significantly with the genotype-defined *CYP 2D6*
230 enzyme activity scores (Figure 2; $\rho = -0.2$, $p = 0.004$). Patients with low *CYP 2D6* activity scores had,
231 on average, higher observed concentrations of primaquine than predicted (i.e. positive
232 residuals), whereas patients with normal activity scores had lower concentrations than expected
233 (i.e. negative residuals). For plasma carboxyprimaquine concentrations, a trend in the same
234 direction was observed, but the correlation was substantially smaller, and it was not significant
235 ($p = 0.1$).

236 Methemoglobinemia and hemolysis

237 Primaquine causes predictable methemoglobinemia. As reported previously methemoglobin
238 concentrations rose over the first week of primaquine treatment, and then plateaued in the 14-
239 day primaquine groups. The day 7 values were usually the peak recorded values
240 (Supplementary Figure 3). Methemoglobin (expressed as a percentage of the hemoglobin

241 concentration) was lower in children than in young adults ($p < 10^{-16}$ for a spline term fit to age in
242 a generalized additive regression model, Figure 3A), and was lower in patients with loss of
243 function *CYP 2D6* polymorphisms (Figure 2C; absolute decrease of 1.2 percentage points in the
244 mean day 7 methemoglobin level in patients with an activity score ≤ 0.5 compared to patients
245 with an activity score > 0.5 ; 95% CI: 0.1-2.3%, $p=0.04$). Day 7 methemoglobin levels were
246 associated with both primaquine and carboxyprimaquine day 7 plasma concentrations. A ten-
247 fold increase in primaquine day 7 concentrations was associated with an absolute increase of
248 0.7 percentage points in day 7 methemoglobin levels (95% CI: 0.14-1.23), and a ten-fold
249 increase in carboxyprimaquine concentrations was associated with an absolute increase of 1.1
250 percentage points in day 7 methemoglobin levels (95% CI: 0.5 – 2.0). Four patients stopped
251 taking primaquine because of elevated methemoglobin levels and associated symptoms. Two of
252 these patients stopped on day 5 and, as the day 6 primaquine dose was not administered, they
253 had low day 7 primaquine and carboxyprimaquine levels. One of these patients had a recorded
254 methemoglobin level of 20.9% on day 6 followed by 18.1% on day 7. The other three patients
255 had peri-oral cyanosis (blue lips). Their peak recorded methemoglobin levels were between 10
256 and 12%.

257 There was no relationship between age and hemolysis defined as the percentage drop in
258 hematocrit between baseline and day 7 (Figure 3B).

259 Primaquine exposure and *P. vivax* recurrence

260 We did an exploratory analysis of the relationship between primaquine exposures and times to
261 the first *P. vivax* recurrence. A total of 564 patients had recorded day 7 drug levels and
262 methemoglobin levels, and 70 had at least one recurrence during follow-up. After adjusting for

263 age and partner drug, day 7 concentrations of primaquine and carboxyprimaquine were not
264 associated with the risk of recurrence, but a 1% absolute increase in day 7 methemoglobin was
265 associated with a hazard ratio for recurrence of 0.9 (95% CI: 0.85-0.99, p=0.02). Two of the
266 three patients with a *CYP 2D6* activity score of 0 had a *P. vivax* recurrence, and one of them had
267 2 recurrences (the interval between recurrences was >65 days). Studies are ongoing to
268 characterize the relationship between *CYP 2D6* genotypes and risk of *P. vivax* relapse in this
269 population.

270 **Discussion**

271 Radical cure of *P. vivax* malaria is necessary to prevent relapses. Relapses of vivax malaria are a
272 major cause of morbidity and developmental delay in children living in endemic areas, so
273 optimization of primaquine dosing is critical in this age group. The higher *P. vivax* relapse rates in
274 children compared with adults living in endemic areas observed in some studies (22) are
275 attributed usually to lower levels of immunity, but lower drug exposures could also be a
276 contributory factor. For many antimalarial drugs, exposures in children are lower than in adults
277 and an increase in the weight adjusted dosing is needed (1). The limited pharmacokinetic
278 evidence to date for primaquine does not provide a clear picture, with a study from Papua New
279 Guinea suggesting little difference between adults and older children (2), whereas a study of
280 single dose primaquine (used as a *P. falciparum* gametocytocide) in Tanzania (3) and a study of
281 primaquine for *P. vivax* radical cure in Brazil (4) both suggesting that younger children had lower
282 exposures. The relationship between plasma primaquine concentrations and antimalarial effect
283 is complex. Primaquine is metabolized rapidly (elimination half-life ~5 hours) via monoamine
284 oxidase to a biologically inert metabolite carboxyprimaquine and, through a separate pathway,

285 mainly via *CYP 2D6*, to several active hydroxylated metabolites (6, 23). The exact mechanism of
286 antimalarial action remains uncertain. Recent laboratory studies suggest that these unstable
287 hydroxylated metabolites are oxidized to quinoneimines generating local hydrogen peroxide -
288 which is parasiticidal. The quinoneimines in turn are substrates for cytochrome P450
289 NADPH:oxidoreductase (POR or CPR) resulting in hydrogen peroxide accumulation and
290 augmenting the parasiticidal effect (24). These reactions may mediate both the antimalarial
291 therapeutic effects, and also the oxidant hemolytic adverse effects. Alternatively the
292 quinoneimine itself may cause the hemolytic and possibly parasiticidal effects by forming
293 irreversible ligands with heme. There is also evidence for synergy between the 8-aminoquinolines
294 and other quinoline antimalarials in liver stage and blood stage activities (25, 26). The 8-
295 aminoquinolines have innate schizonticidal activity as well as radical curative activity and 4-
296 aminoquinoline antimalarials increase primaquine concentrations (15, 16, 26). Unfortunately,
297 although the metabolic pathway to the production of the active primaquine metabolites has
298 been characterized ex-vivo, no validated measure of their concentrations, or of their more stable
299 metabolites, in whole blood, plasma, or urine has yet been correlated with antimalarial
300 therapeutic responses in-vivo. Thus, measurement of primaquine and carboxyprimaquine
301 concentrations does not provide a direct correlate of antimalarial activity. Furthermore, because
302 the apparent volume of distribution of carboxyprimaquine is not known, the proportion of parent
303 drug that passes through this inactive metabolic pathway cannot be estimated.

304
305 This large study of day 7 “trough” primaquine and carboxyprimaquine plasma concentrations
306 shows clearly that exposures to both parent compound and inactive metabolite are lower in

307 children than in adults. This is unlikely to be explained by lower oral bioavailability as primaquine
308 is generally well absorbed, the children in the study were clinically well by seven days after
309 starting treatment (14), all doses were observed, and only 7 children ≤ 10 years old (≤ 27 kg)
310 vomited. It presumably reflects either larger primaquine (and carboxyprimaquine) distribution
311 volumes, or increased clearance, or both. The lower ratio of carboxyprimaquine to primaquine
312 in children may also be explained by these age-related pharmacokinetic changes. Although
313 greater diversion down the bioactivating CYP pathway cannot be excluded as an explanation for
314 these findings- there is no convincing evidence for augmented drug efficacy (e.g. no relationship
315 with fever or parasite clearance times) or increased hemolytic toxicity in children to support this.
316 Furthermore, in this study, methemoglobinemia was lower in children than in young adults,
317 indicating that formation of oxidant metabolites was reduced (27). Lower methemoglobin
318 concentrations were associated with an increased risk of *P. vivax* recurrence. The importance of
319 *CYP 2D6* primaquine bioactivation in the generation of oxidant metabolites was evidenced by the
320 lower levels of methemoglobinemia in patients with loss of function *CYP 2D6* polymorphisms
321 (Figure 2C). Taken together this evidence strongly suggests that children have lower exposures
322 to the biologically active metabolites of primaquine than do adults receiving the same weight
323 adjusted doses.

324

325 This study was sufficiently large that the influence of other covariates affecting primaquine
326 exposures could be examined. We have reported previously that co-administration of quinoline
327 or structurally related antimalarials increases primaquine and carboxyprimaquine concentrations
328 (15, 16). This was confirmed in this study. The effects on the parent compound of chloroquine

329 and piperazine were similar whereas piperazine had a larger effect on carboxyprimaquine. In
330 Asia loss of function *CYP 2D6* genetic polymorphisms (mainly the *10 allele) are common. In this
331 study low *CYP 2D6* activity scores (derived from the genotype) were associated with higher
332 primaquine levels and lower levels of methemoglobinemia as would be expected from reduced
333 metabolic conversion through this bioactivation pathway.

334 There are several limitations to this study. This analysis is limited to drug concentrations at one
335 time point during radical cure treatment providing a limited description of drug exposures. Very
336 young children are under-represented, and the analysis does not include any infants < 1 year old.
337 In addition, *CYP 2D6* genotyping was not performed in all patients.

338 There is no evidence that the adverse effects of primaquine are significantly worse in children
339 than adults. The main therapeutic implication of this large pharmacometric evaluation is that
340 children may require larger weight adjusted doses of primaquine than adults.

341 Funding

342 This work was supported by the Wellcome Trust [grant number 089179/Z/09/Z] to NJW. CSC, JW,
343 APP, JT, CL, FHN and NJW are supported by the Wellcome Trust [Programme grant number
344 089179]. CSC, JW, APP, JT, CL, FHN, and NJW are part of the Wellcome Trust Mahidol University
345 Oxford Tropical Medicine Research Programme funded by the Wellcome Trust.

346

347 Acknowledgements

348 This research was funded by The Wellcome Trust. A CC BY or equivalent license is applied to the
349 author accepted manuscript arising from this submission, in accordance with the grant's open

350 access conditions. The authors would like to thank the SMRU staff for their hard work in
351 running this study and the MORU Clinical Pharmacology Laboratory in Bangkok for their diligent
352 work in sample processing and drug measurements. Special appreciation goes to the
353 contributions of Htet Htet Chaw, Nwe Wah Lin, Thida Zin, Say Paw, Naw Eh Shee, Thu Lay Paw,
354 Rattanporn Raksapraidee, Moo Koo Paw, the data entry team headed by Jacher
355 Wiladphaingern, the logistics team, and the laboratory teams headed by Kanlaya Sriprawat and
356 Germana Bancone.
357 We would also like to thank the Data Safety and Monitoring Board: Bob Taylor, Charles Woodrow,
358 and Professor Nicholas Day for their time and commitment.

359 **References**

- 360 1. World Health Organization. 2015. Guidelines for the treatment of malaria, 3rd Edition. World
361 Health Organization, Geneva.
- 362 2. Moore BR, Salman S, Benjamin J, Page-Sharp M, Robinson LJ, Waita E, Batty KT, Siba P, Mueller I,
363 Davis TME, Betuela I. 2014. Pharmacokinetic properties of single-Dose primaquine in papua new
364 guinean children: Feasibility of abbreviated high-dose regimens for radical cure of vivax malaria.
365 *Antimicrob Agents Chemother* 58:432–439.
- 366 3. Gonçalves BP, Pett H, Tiono AB, Murry D. 2017. Age, weight, and CYP2D6 genotype are major
367 determinants of primaquine pharmacokinetics in African children. *Antimicrob Agents Chemother*
368 *Agents Chemother* 61:e02590-16.
- 369 4. Vieira MVDF, Matos Lopes TR, Mello AGNC, de Sena LWP, Commons RJ, Vieira JLF. 2020. Doses of
370 primaquine administered to children with Plasmodium vivax according to an age-based dose
371 regimen. *Pathog Glob Health* 114:388–392.
- 372 5. Gogtay N, Karande S, Kadam P, Momin S, Thatte U. 2021. Evaluation of pharmacokinetics of

- 373 single-dose primaquine in undernourished versus normally nourished children diagnosed with
374 *Plasmodium vivax* malaria in Mumbai. *J Postgrad Med* 67:75–79.
- 375 6. Pybus BS, Marcsisin SR, Jin X, Deye G, Sousa JC, Li Q, Caridha D, Zeng Q, Reichard G a,
376 Ockenhouse C, Bennett J, Walker L a, Ohrt C, Melendez V. 2013. The metabolism of primaquine
377 to its active metabolite is dependent on CYP 2D6. *Malar J* 12:e212.
- 378 7. Neafsey P, Ginsberg G, Hattis D, Sonawane B. 2009. Genetic polymorphism in cytochrome P450
379 2D6 (CYP2D6): Population distribution of CYP2D6 activity. *J Toxicol Environ Health B Crit Rev*
380 12:334–361.
- 381 8. McGraw J, Waller D. 2012. Cytochrome P450 variations in different ethnic populations. *Expert*
382 *Opin Drug Metab Toxicol* 8:371–382.
- 383 9. Puaprasert K, Chu C, Saralamba N, Day NPJ, Nosten F, White NJ, Dondorp AM, Imwong M. 2018.
384 Real time PCR detection of common CYP2D6 genetic variants and its application in a Karen
385 population study. *Malar J* 17:427.
- 386 10. Bennett JW, Pybus BS, Yadava A, Tosh D, Sousa JC. 2013. Primaquine failure and cytochrome P-
387 450 2D6 in *Plasmodium vivax* malaria. *N Engl J Med* 369:1380–1381.
- 388 11. Baird JK, Louisa M, Noviyanti R, Ekawati L, Elyazar I, Subekti D, Chand K, Gayatri A, Instiaty,
389 Soebianto S, Crenna-Darusallam C, Djoko D, Hasto BD, Meriyenes D, Wesche D, Nelwan EJ,
390 Sutanto I, Sudoyo H, Setiabudy R. 2018. Association of Impaired Cytochrome P450 2D6 Activity
391 Genotype and Phenotype with Therapeutic Efficacy of Primaquine Treatment for Latent
392 *Plasmodium vivax* Malaria. *JAMA Netw Open* 1:e181449.
- 393 12. Price RN, von Seidlein L, Valecha N, Nosten FH, Baird JK, White NJ. 2014. Global extent of
394 chloroquine-resistant *Plasmodium vivax*: a systematic review and meta-analysis. *Lancet Infect Dis*
395 14:982–91.
- 396 13. Taylor WRJ, Thriemer K, von Seidlein L, Yuentrakul P, Assawariyathipat T, Assefa A, Auburn S,

- 397 Chand K, Chau NH, Cheah PY, Dong LT, Dhorda M, Degaga TS, Devine A, Ekawati LL, Fahmi F,
398 Hailu A, Hasanzai MA, Hien TT, Khu H, Ley B, Lubell Y, Marfurt J, Mohammad H, Moore KA,
399 Naddim MN, Pasaribu AP, Pasaribu S, Promnarate C, Rahim AG, Sirithiranont P, Solomon H,
400 Sudoyo H, Sutanto I, Thanh NV, Tuyet-Trinh NT, Waithira N, Woyessa A, Yamin FY, Dondorp A,
401 Simpson JA, Baird JK, White NJ, Day NP, Price RN. 2019. Short-course primaquine for the radical
402 cure of Plasmodium vivax malaria: a multicentre, randomised, placebo-controlled non-inferiority
403 trial. *Lancet* 394:929–938.
- 404 14. Chu CS, Phyo AP, Turner C, Win HH, Poe NP, Yotyingaphiram W, Thinraow S, Wilairisak P,
405 Raksapraidee R, Carrara VI, Paw MK, Wiladphaingern J, Proux S, Bancone G, Sriprawat K, Lee SJ,
406 Jeeyapant A, Watson JA, Tarning J, Imwong M, Nosten F, White NJ. 2018. Chloroquine versus
407 dihydroartemisinin-piperaquine with standard High-dose primaquine given either for 7 days or
408 14 days in Plasmodium vivax malaria. *Clin Infect Dis* 68:1311–1319.
- 409 15. Hanboonkunupakarn B, Ashley EA, Jittamala P, Tarning J, Pukrittayakamee S, Hanpithakpong W,
410 Chotsiri P, Wattanakul T, Panapipat S, Lee SJ, Day NPJ, White NJ. 2014. Open-Label Crossover
411 Study of Primaquine and Dihydroartemisinin-Piperaquine Pharmacokinetics in Healthy Adult Thai
412 Subjects. *Antimicrob Agents Chemother* 58:7340–7346.
- 413 16. Pukrittayakamee S, Tarning J, Jittamala P, Charunwatthana P, Lawpoolsri S, Lee SJ,
414 Hanpithakpong W, Hanboonkunupakarn B, Day NPJ, Ashley E a, White NJ. 2014. Pharmacokinetic
415 interactions between primaquine and chloroquine. *Antimicrob Agents Chemother* 58:3354–3359.
- 416 17. Kaewkhao K, Chotivanich K, Winterberg M, Day NP, Tarning J, Blessborn D. 2019. High sensitivity
417 methods to quantify chloroquine and its metabolite in human blood samples using LC-MS/MS.
418 *Bioanalysis* 11:333–347.
- 419 18. Dorado P, Cáceres MC, Pozo-Guisado E, Wong ML, Licinio J, Llerena A. 2005. Development of a
420 PCR-based strategy for CYP2D6 genotyping including gene multiplication of worldwide potential

- 421 use. *Biotechniques* 39:571–574.
- 422 19. Gaedigk A, Simon SD, Pearce RE, Bradford LD, Kennedy MJ, Leeder JS. 2008. The CYP2D6 activity
423 score: Translating genotype information into a qualitative measure of phenotype. *Clin Pharmacol*
424 *Ther* 83:234–242.
- 425 20. Caudle KE, Sangkuhl K, Whirl-Carrillo M, Swen JJ, Haidar CE, Klein TE, Gammal RS, Relling M V.,
426 Scott SA, Hertz DL, Guchelaar HJ, Gaedigk A. 2020. Standardizing CYP2D6 Genotype to Phenotype
427 Translation: Consensus Recommendations from the Clinical Pharmacogenetics Implementation
428 Consortium and Dutch Pharmacogenetics Working Group. *Clin Transl Sci* 13:116–124.
- 429 21. Spring MD, Lon C, Sok S, Sea D, Wojnarski M, Chann S, Kuntawunginn W, Heng TK, Nou S,
430 Arsanok M, Sriwichai S, Vanachayangkul P, Lin JT, Manning JE, Jongsakul K, Pichyangkul S,
431 Satharath P, Smith PL, Dysoley L, Saunders DL, Waters NC. 2020. Prevalence of CYP2D6
432 genotypes and predicted phenotypes in a cohort of cambodians at high risk for infections with
433 *plasmodium vivax*. *Am J Trop Med Hyg* 103:756–759.
- 434 22. Luxemburger C, van Vugt M, Jonathan S, McGready RM, Looareesuwan S, White NJ, Nosten FH.
435 1999. Treatment of vivax malaria on the western border of Thailand. *Trans R Soc Trop Med Hyg*
436 93:433–438.
- 437 23. Avula B, Tekwani BL, Chaurasiya ND, Fasinu P, Dhammika Nanayakkara NP, Bhandara Herath
438 HMT, Wang Y-H, Bae J-Y, Khan SI, Elsohly MA, McChesney JD, Zimmerman PA, Khan IA, Walker
439 LA. 2018. Metabolism of primaquine in normal human volunteers: investigation of phase I and
440 phase II metabolites from plasma and urine using ultra-high performance liquid chromatography-
441 quadrupole time-of-flight mass spectrometry. *Malar J* 17:294.
- 442 24. Camarda G, Jirawatcharadech P, Priestley RS, Saif A, March S, Wong MHL, Leung S, Miller AB,
443 Baker DA, Alano P, Paine MJI, Bhatia SN, O’Neill PM, Ward SA, Biagini GA. 2019. Antimalarial
444 activity of primaquine operates via a two-step biochemical relay. *Nat Commun* 10:1–9.

- 445 25. Alving AS, Arnold J, Hockwald RS, Clayman CB, Dern RJ, Beutler E, Flanagan CL. 1955. Potentiation
446 of the curative action of primaquine in vivax malaria by quinine and chloroquine. J Lab Clin Med
447 46:301–306.
- 448 26. Baird JK. 2019. 8-Aminoquinoline therapy for latent malaria. Clin Microbiol Rev 32:1–68.
- 449 27. Umbreit J. 2007. Methemoglobin--it's not just blue: a concise review. Am J Hematol 82:134–144.
- 450

451 **Tables and Figures**

452 Table 1. Patient characteristics at enrolment by age group

	Age group			
	≤5 years	6-10 years	11-15 years	≥16 years
	n=34	n=71	n=118	n=418
Chloroquine+Primaquine-7	8 (5%)	22 (13%)	29 (18%)	104 (64%)
Chloroquine+Primaquine-14	10 (6%)	18 (11%)	29 (18%)	103 (65%)
DHAP+Primaquine-7	7 (4%)	15 (10%)	37 (24%)	98 (62%)
DHAP+Primaquine-14	9 (6%)	16 (10%)	23 (14%)	113 (70%)
Median age years (IQR, range)	4 (3.2-5, 1.5-5)	8 (6-10, 5.1-10)	13 (12-14, 11-15)	28 (20-39, 16-63)
Median weight, kg (IQR, range)	14 (12-16, 8-20)	20 (16-23, 13-30)	35 (29-43, 21-57)	52 (47-56, 31-88)
Median Body Mass Index, kg/m ² (IQR, range)	15 (14-16, 13-18)	14 (14-15, 11-18)	17 (15-18, 12-23) ¹	20 (19-22, 13-36)
History of fever, n (%)	34 (100%)	71 (100%)	118 (100%)	411 (98%)
Median temperature >37.5°C, (IQR, range)	37.5 (36.7-38.2, 36-40)	37.4 (36.8-38.2, 36-40.1)	37.6 (37-38.5, 36-40.9) ¹	37.3 (36.8-38.1, 36-40.9)
Fever clearance; days (range)	0 (0-4)	0 (0-3)	1 (0-2)	0 (0-4)
Geometric mean parasitemia, parasites/μL (range)	3096 (16-40,192)	3633 (16-221,056)	4886 (16-75,109)	3804 (16-816,400)
Parasite clearance, days (range)	2 (1-4)	2 (1-3)	2 (1-4)	2 (1-5)
Gametocytemia, n (%)	23 (68%)	56 (79%)	104 (88%)	352 (84%)
Median chloroquine level ^a , ng/mL (range)	54.3 (6.4-115)	50.1 (27.3-138)	56.1 (27.6-161)	77.9 (26.9-248)
Median piperaquine level ^a , ng/mL (range)	37.5 (15.3-109)	29.4 (10-7-78.2)	35.3 (7.7-131)	37 (7.3-181)
Median carboxyprimaquine level ^a , ng/mL (range)	261 (29-1410)	406 (9-1590)	563 (40-2740)	793 (59-4710)
Median primaquine level ^a , ng/mL (range)	3.5 (1.1-43.8)	3.8 (0.9-349)	5.2 (0.9-106)	6.9 (1-293)
Median carboxyprimaquine: primaquine ratio ^a , (range)	86 (12-207)	97 (4-256)	98 (23-516)	106 (2-564)

453

454 Primaquine-7: primaquine dosing 1 mg/kg/day for 7 days

455 Primaquine-14: primaquine dosing 0.5 mg/kg/day for 14 days

456 Numeric superscript denotes the number of missing values

457 ^a Only data from the first episode are included

458 **Legends to Figures**

459 Figure 1: The effect of age on primaquine and carboxyprimaquine exposures in patients with acute vivax
460 malaria.

461 Panel A: age versus mg/kg primaquine daily dose;

462 Panel B: age versus the primaquine concentration on day 7;

463 Panel C: age versus the carboxyprimaquine concentration on day 7;

464 Panel D: age versus the ratio of the day 7 carboxyprimaquine to primaquine concentration.

465 The black lines show model fits using a generalized additive model with a smooth spline term for age
466 and adjusting for daily mg/kg dose; number of days of primaquine received, time since last dose, partner
467 drug and fever clearance time (dashed: mean predicted concentration for 1mg/kg daily; solid: mean
468 predicted concentration for 0.5 mg/kg daily).

469

470 Figure 2: The relationship between *CYP 2D6* genotypes and primaquine and carboxyprimaquine
471 exposure, and day 7 methemoglobin levels. In panels A and B, the y-axis shows the model residuals
472 (observed minus predicted) for the main model of exposure (adjusting for age, daily mg/kg primaquine
473 dose, partner drug, and fever clearance time). In panel C, the y-axis shows the observed day 7
474 methemoglobin %. In all three panels the x-axis is the activity score predicted from the *CYP 2D6*
475 diplotype (20). Each box-and-whisker plot shows the median value, the interquartile range and the
476 range. The box widths are proportional to the square-roots of the number of observations per activity
477 score.

478

479 Figure 3: Age and drug exposure relationships with hemolysis and methemoglobinemia.

480 Panel A: Age and day 7 methemoglobin

481 Panel B: Age and the day 7 change in hematocrit from baseline.

482 Panel C: Day 7 methemoglobin and pre-dose primaquine concentrations.

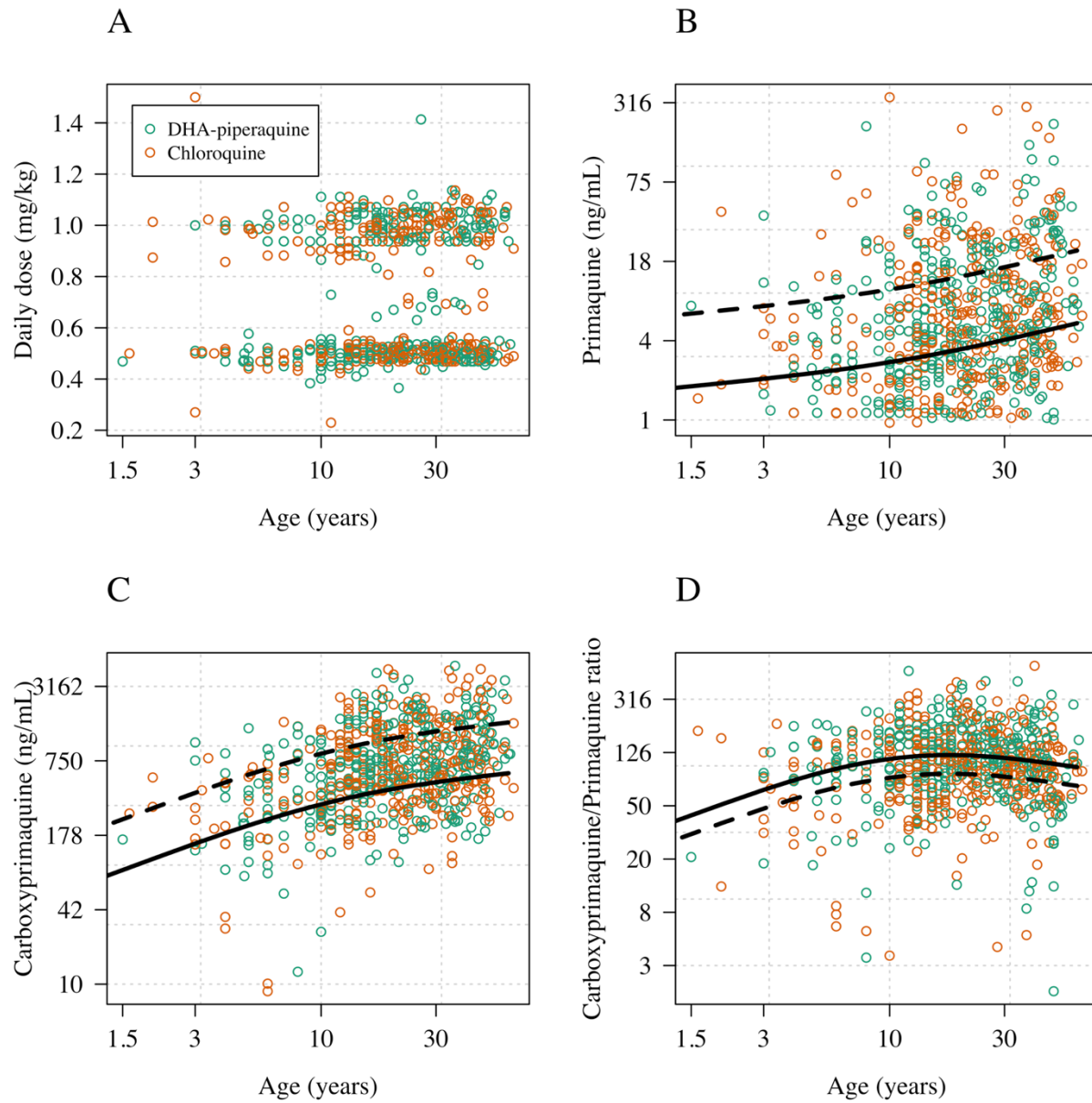
483 Panel D: Day 7 methemoglobin and pre-dose carboxyprimaquine concentrations. In panels A&B the
484 black lines show model fits under a generalized additive model with a smooth spline term for age and
485 adjusting for daily mg/kg dose; number of days of primaquine received, the time since last dose, and
486 G6PD deficiency (dashed: mean predicted concentration for 1mg/kg daily; solid: mean predicted
487 concentration for 0.5 mg/kg daily).

488
489 Supplementary Figure 1: time since previous dose versus the primaquine and carboxyprimaquine blood
490 concentration. The dashed vertical lines show the 5th and 95th quantiles of the time since last dose.

491
492 Supplementary Figure 2: Primaquine and carboxyprimaquine log concentrations versus chloroquine and
493 piperazine log concentrations measured at the same timepoints. The dashed lines show a univariate
494 linear regression to highlight the trend.

495
496 Supplementary Figure 3: Methemoglobin as function of the time since starting primaquine (black
497 circles: 0.5 mg/kg target dose for 14 days; red circles: 1 mg/kg target dose for 7 days). We added
498 random jitter to the time in days for visual clarity.

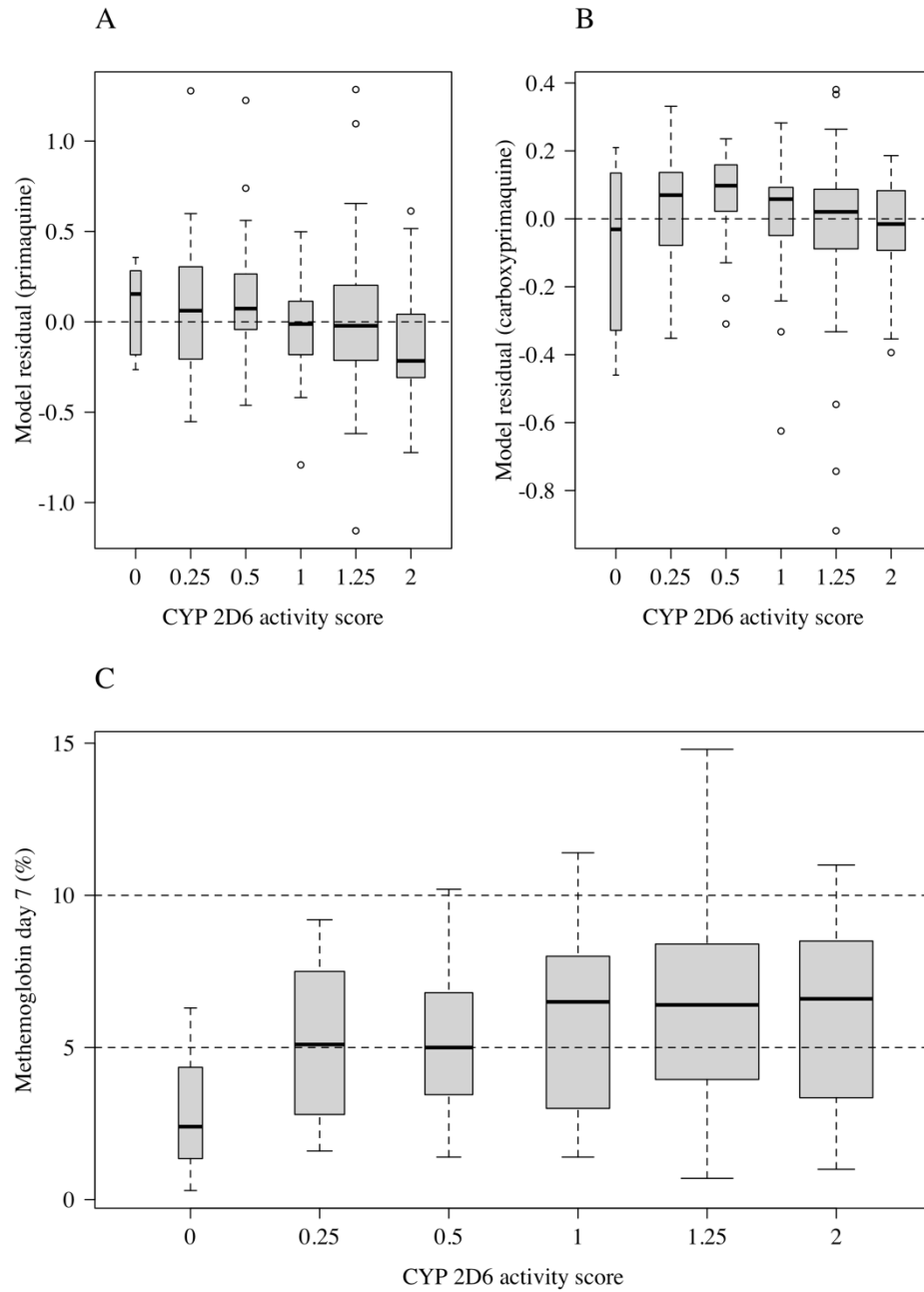
499
500 Supplementary Table 1: Estimated regression coefficients (standard errors) for the linear terms in the
501 main models. NI: not included. Age is included in these models as a non-linear term and so it is excluded
502 from this table (effects are shown in Figures 1 & 3). For the time to recurrence model, the coefficients
503 and standard errors are given on the linear scale (hazard ratio is given by the exponential of the
504 coefficient).



505

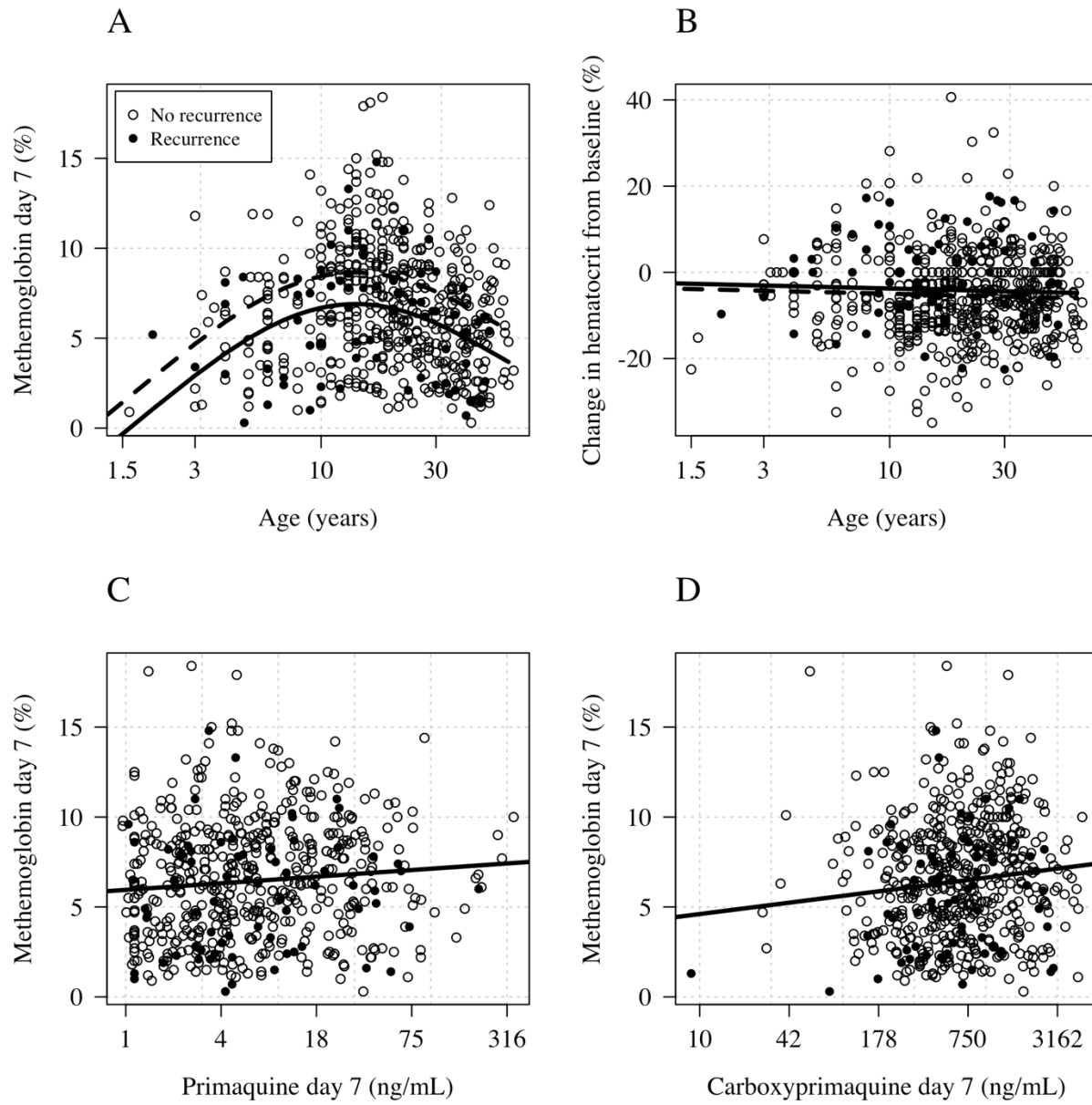
506 *Figure 1*

507



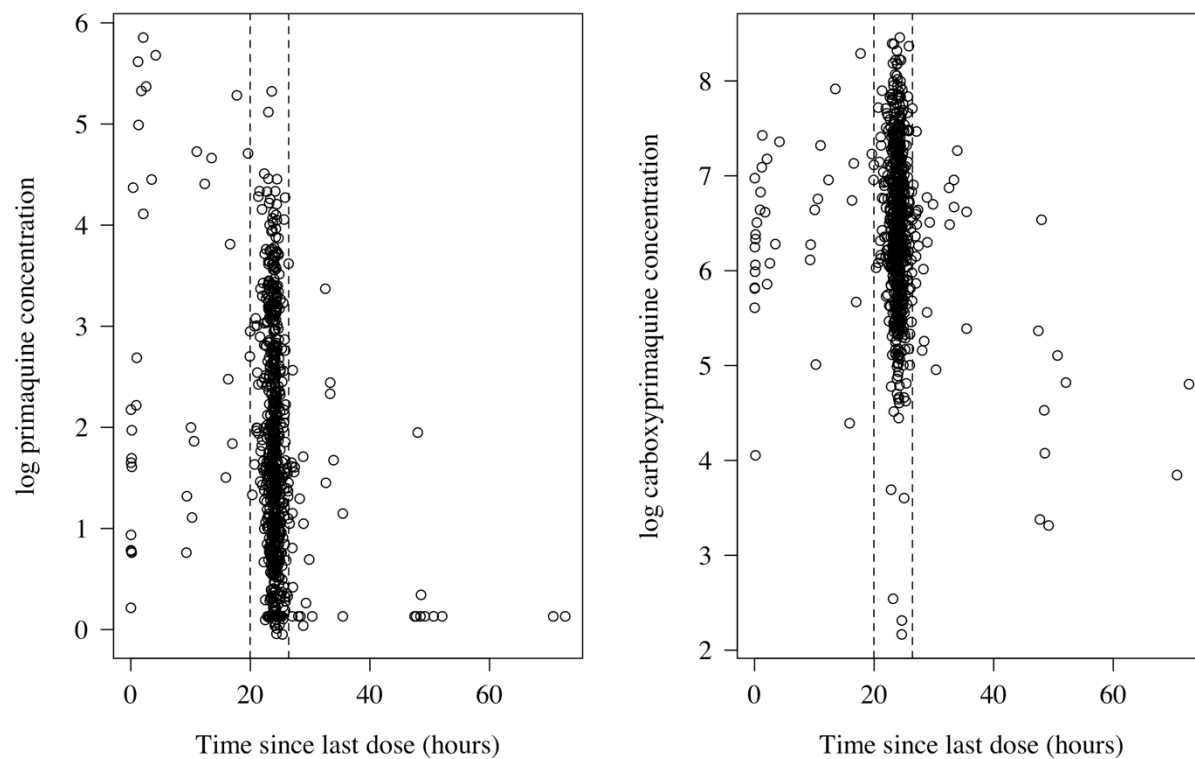
508
509 *Figure 2*

510
511

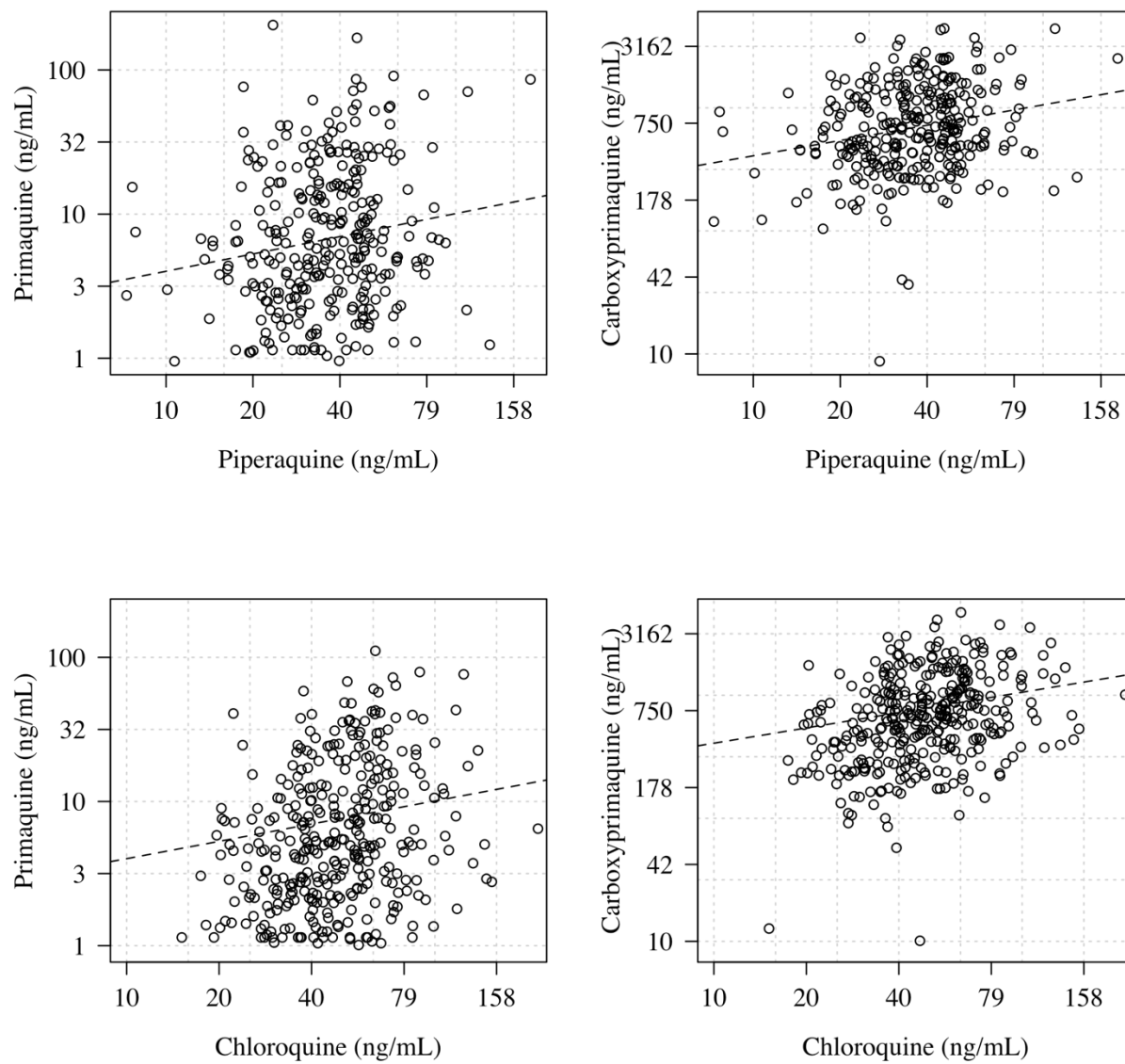


512

513 *Figure 3*

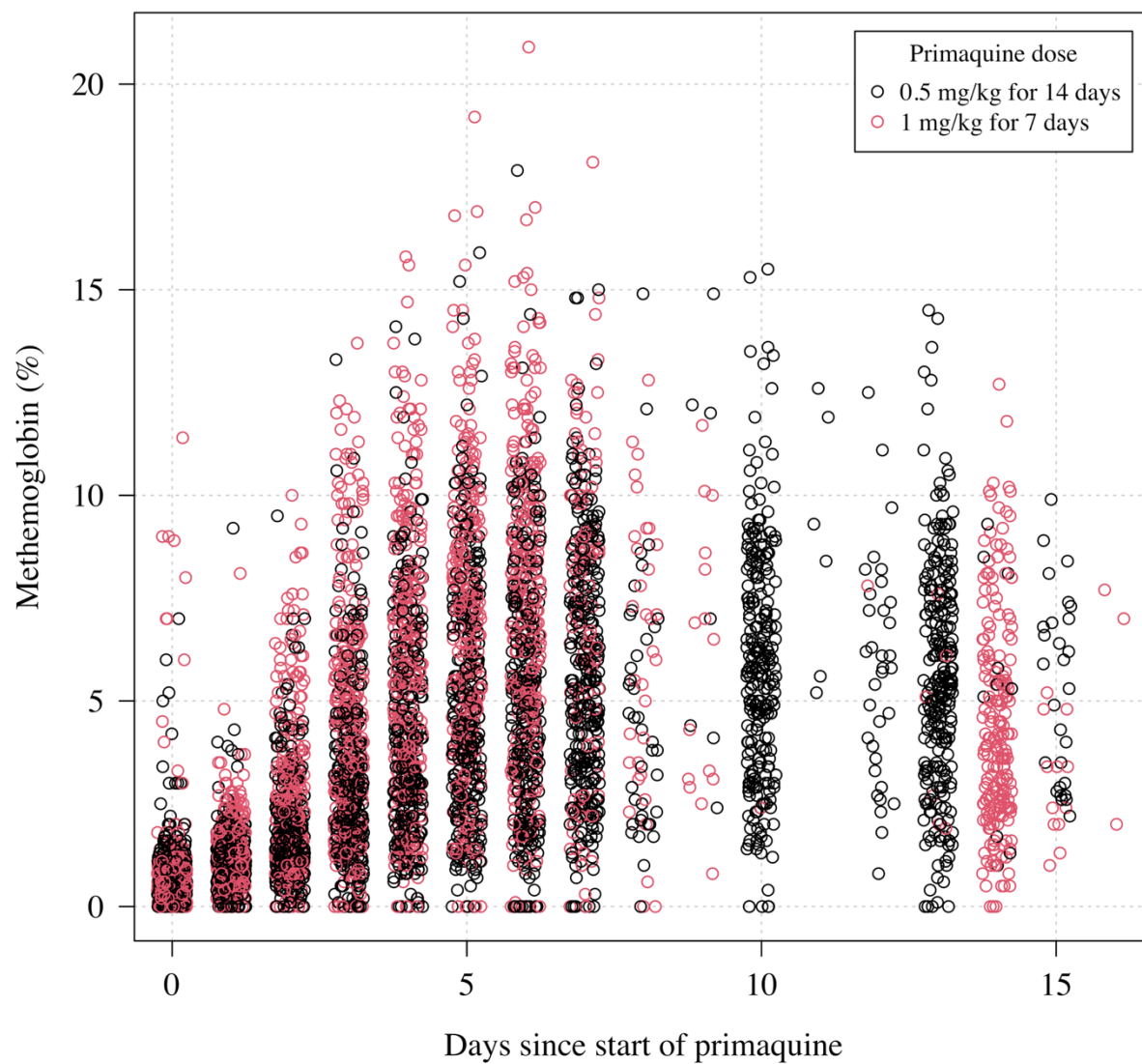


514
515 Supplementary Figure 1



516

517 Supplementary Figure 2



518

519 Supplementary Figure 3

Outcome variable	Regression type	Dose (mg/kg)	Partner drug	Days of primaquine	Fever clearance (days)	CYP 2D6 activity score < 1	G6PD deficiency	Methb (%)
PQ (log ng/mL)	linear	1.14 (0.06)	0.014 (0.03)	0.038 (0.047)	-0.017 (0.021)	NI	NI	NI
CPQ (log ng/mL)	linear	0.85 (0.040)	-0.020 (0.021)	0.042 (0.032)	-0.027 (0.014)	NI	NI	NI
log CPQ/PQ	linear	-0.28 (0.043)	-0.039 (0.022)	-0.0040 (0.035)	-0.0086 (0.016)	NI	NI	NI
Methb (%)	linear	3.14 (0.92)	NI	-1.11 (0.77)	NI	-1.21 (0.59)	-0.43 (0.86)	NI
Hb reduction (%)	linear	-2.43 (1.43)	-2.90 (0.73)	3.07 (1.13)	-2.10 (0.50)	NI	-12.0 (1.67)	NI
Time to recurrence	Cox proportional hazards	NI	-0.23 (0.24)	NI	NI	NI	NI	-0.09 (0.039)

520

521 Supplementary Table 1