

Transmission dynamics of COVID-19 in Ghana

1 **Transmission dynamics of COVID-19 in Ghana and the impact of public health interventions**

2 Sylvia K. Ofori,¹ Jessica S. Schwind,¹ Kelly L. Sullivan,¹ Benjamin J. Cowling,² Gerardo
3 Chowell,³ Isaac Chun-Hai Fung¹ *

4

5 **Affiliations:**

6 1 Department of Biostatistics, Epidemiology and Environmental Health Sciences, Jiann-
7 Ping Hsu College of Public Health, Georgia Southern University.

8 2 WHO Collaborating Centre for Infectious Disease Epidemiology and Control, School of
9 Public Health, Li Ka Shing Faculty of Medicine, The University of Hong Kong.

10 3 Department of Population Health Sciences, School of Public Health, Georgia State University.

11 *Correspondence should be addressed to Isaac Chun-Hai Fung, Ph.D., P.O. Box 7989,
12 Department of Biostatistics, Epidemiology and Environmental Health Sciences, Jiann-Ping Hsu
13 College of Public Health, Georgia Southern University, Statesboro, GA 30458-7989, USA.
14 Email: cfung@georgiasouthern.edu. Tel: +1 912 4785079.

15

16 **Keywords:** Ghana, time-varying reproduction number, COVID-19, nonpharmaceutical
17 interventions

18 Manuscript type: Short Report

19 Number of tables: 1 + 5 supplementary tables

20 Number of figures: 2 + 7 supplementary figures

21 Supplementary materials attached

22

23 **Running head:** Transmission dynamics of COVID-19 in Ghana

24

25

26

27

28

Transmission dynamics of COVID-19 in Ghana

29 **Abstract (141 words)**

30 The study characterized the transmission of COVID-19 in Ghana by estimating the time-varying
31 reproduction number (R_t) and exploring the effect of various public health interventions at the
32 national and regional levels. The median R_t for Ghana and six out of sixteen regions dropped from
33 greater than 1 in March 2020 to less than 1 in September but increased above 1 in January 2021.
34 The relaxation of movement restrictions and religious gatherings were not associated with
35 increased R_t in the regions with lower case burdens. However, R_t increased in most regions after
36 schools were reopened in January 2021. In a regression analysis, we estimated that the per-capita
37 cumulative case count increased with population size. Findings indicated the public health
38 interventions reduced the R_t at the national level while at the regional levels, the R_t fluctuated, and
39 the extent of fluctuation varied across regions.

40

41

42

43

44

45

46

47

48

Transmission dynamics of COVID-19 in Ghana

49 **Main text**

50 As of January 30, 2021, 67,782 cases of COVID-19 were confirmed in Ghana, with 424 deaths
51 and 5,515 active cases.¹ Among African countries, Ghana has controlled COVID-19 transmission
52 with a substantial package of public health and social measures (Oxford stringency index of 62.04
53 as of May 7, 2020),^{2, 3} including a 14-day mandatory quarantine for all persons who entered the
54 country, school and church closures, a lockdown of major cities, and internal movement
55 restrictions.⁴

56 This study described the COVID-19 transmission dynamics in Ghana by estimating the
57 time-varying reproduction number (R_t) using Cori et al method⁵ and Generalized Growth Model
58 (GGM) (Supplementary Materials)⁶ to assess the impact of interventions at the national and
59 regional levels and to explore the association between population size and the COVID-19
60 cumulative incidence. The correlation between population mobility and incident case count, and
61 between mobility and R_t was also assessed.

62 The daily number of new infections and daily cumulative incidence data by date of report
63 for Ghana and each of its sixteen regions was obtained through the Ghana Health Service website
64 from March 12, 2020, to January 30, 2021.¹ To account for testing delay (three days) and
65 incubation period (six days), the time series was shifted by nine days to approximate the date of
66 infection.⁷ We used the EpiEstim package in R version 4.0.3 to estimate the R_t using the 7-day
67 sliding window and the nonoverlapping time window between interventions.⁵ Specific time points
68 at which a bundle of interventions began were selected for the latter analysis (Table 1).

69 The power-law relationship between cumulative case number and population size was
70 investigated at four time points in 2020 (June 30th, August 31st, October 31st, and December 31st),

Transmission dynamics of COVID-19 in Ghana

71 using linear regression of \log_{10} -transformed per-capita cumulative case number and \log_{10} -
72 transformed population size.⁸ The relationship between mobility and the daily number of new
73 infections and that between mobility and the 7-day sliding window R_t were assessed using the
74 time-lagged cross-correlation with data from Google Mobility Report.⁹ The Georgia Southern
75 University Institutional Review Board determined a non-human subject status for this project
76 (H20364) under the G8 exemption category.

77 At the national level and for the Greater Accra region, the R_t dropped from about 1.5-2 in
78 March to about 0.8 in April (Figure 1, Figure S5). The R_t sustained a value <1 between June and
79 December but increased to >1 in January (Figure 1). For the Ashanti Region, the R_t fluctuated
80 between 1 and 3 from March to May and fluctuated around 1 between mid-May to August.
81 However, it sustained a value of <1 for two more months before increasing then fluctuated between
82 November and January. In the Central and Eastern regions, the R_t fluctuated throughout the study
83 period but sustained values <1 between June and December and gradually increased to >1 in
84 January 2021 (Figure S1).

85 The R_t estimated using nonoverlapping windows suggested the effect of government
86 policies and interventions on the increase and decrease of COVID-19 transmission varied across
87 regions. For example, the restriction of social gatherings and travel bans implemented on March
88 15th, 2020, may have resulted in insignificant changes in R_t at the national level and Greater Accra
89 regions. However, when all borders were closed to human traffic nationwide a week later, the R_t
90 lowered to around 1 accounting for a 12.06% (95% credible interval, CrI: 10.14%, 13.75%)
91 decrease for Ghana. In contrast, the R_t for Greater Accra increased by 27.51% (95% CrI: 24.44%,
92 31.03%). On April 27th, 2020, the mandatory wearing of masks at all businesses and organizations
93 was implemented nationwide which was followed by a decrease in R_t by 15.34% (95% CrI:

Transmission dynamics of COVID-19 in Ghana

94 13.72%, 16.97%) at the national level. With the relaxation of restrictions on social gatherings,
95 there was a decrease in R_t by 0.53% (95% CrI: 0.16%, 0.91%) for Ghana at the national level,
96 11.16% (95% CrI: 10.54%, 11.79%) for the Central region, 12.12% (95% CrI: 4.33%, 19.35%)
97 for the Western region, 52.86% (95% CrI: 34.95%, 65.12%) for the Upper East region and 26.49%
98 (95% CrI: 26.26%, 26.75%) for the Volta region but increased by 19.4% (95% CrI: 18.72%,
99 20.08%) in the Greater Accra region. Overall, the reopening of schools on January 9th, 2021 was
100 followed by sustained transmission in all regions. Details of percent changes in R_t are in
101 supplementary materials.

102 The assessment of population size and cumulative incidence showed that Ghanaian regions
103 with larger populations experienced higher COVID-19 attack rates (Figure 2 and Table S3).
104 Furthermore, there was a weak positive correlation between mobility changes and COVID-19
105 incidence (Tables S4 and S5), e.g., the daily number of new infections led to mobility changes to
106 grocery and pharmacy outlets by 2 days (+2-day-lag, $r=0.291$, P value = 0.006) but synchronized
107 with mobility changes to workplaces (0-day-lag, $r=0.269$, P value = 0.011). On the contrary, there
108 was a negative but insignificant correlation between daily incidence and residential mobility
109 change (+2-day-lag, $r=-0.154$, P value = 0.145). R_t was not found to be correlated with mobility
110 changes except for a negative correlation with residential mobility (0-day-lag, $r=-0.213$, P value=
111 0.043).

112 Overall, $R_t > 1$ showed sustained transmission across the country, but the interventions
113 implemented during the study period appeared to reduce R_t in regions with relatively higher case
114 counts. Interestingly, relaxation of restrictions at social gatherings was not associated with an
115 increase in R_t .

Transmission dynamics of COVID-19 in Ghana

116 The early estimates of R_t for Ghana were lower than the reported values for other countries
117 like Nigeria,¹⁰ Egypt,¹¹ and Kenya.¹² The lower R values for Ghana suggests that public health and
118 social measures were effective in containing the epidemic at the initial stage. The estimate also
119 differs slightly from Dwomoh and colleagues (2021), but may be explained by the differences in
120 the methods including the fact that these authors used data from the first 60 days.¹³ Nevertheless,
121 R_t remained greater than 1 at the national level and in most regions indicating sustained
122 transmission. It is therefore imperative that public health measures are strengthened throughout
123 the country and efforts are prioritized especially in regions with larger population sizes as the
124 disparity in the case burden across regions was reported in multiple studies.^{14, 15} This disparity may
125 be explained by the difficulty in practicing social distancing due to overcrowding stemming from
126 high commercial activities, slum areas facilitating disease spread and urban residency. Hence, such
127 regions will be required to implement more stringent preventive measures in order to decrease
128 transmission.¹⁶

129 The reopening of schools was associated with a surge in cases in other jurisdictions.¹⁷ This
130 finding supports the need for routine surveillance, case investigation, better protocols for isolation
131 and quarantine, and deployment of protective personal equipment to schools. Although there are
132 limited data on disease dynamics in children in Ghana, children returning to schools would allow
133 parents to return to their workplaces. This assumption is supported by the relative increase in visits
134 to workplaces when schools were reopened according to the Google mobility report. Although the
135 correlation between changes in mobility and transmission intensity was weak in our study,
136 mobility changes in trips to grocery and pharmacy outlets and workplaces have been reported to
137 be associated with lower transmission rates in most countries before and after interventions were
138 relaxed.¹⁸ The difference in correlation between mobility changes and transmission intensity may

Transmission dynamics of COVID-19 in Ghana

139 be due to cultural differences, economic status, and variations in the types of interventions
140 implemented.

141 It was unexpected that the relaxation of restrictions on social gatherings was not followed
142 by an increase in the R_t estimates, although such policies make it difficult for social distancing
143 especially in enclosed places like churches or restaurants. This finding may be observed due to the
144 residual effect of the prior mask mandates and the reluctance of prominent churches to resume in-
145 person religious activities.¹⁹ In addition, mobility changes to retail and recreation centers remained
146 below baseline even after the restrictions were relaxed (Figure S6).

147 Our study is not without limitations. First, we used publicly available data, which was
148 subject to underreporting or reporting delays. Second, data were only available by the date of the
149 report and unavailable by the date of symptom onset. We, therefore, accounted for this by shifting
150 the data by nine days to approximate the time of infection. Third, given the use of aggregate data,
151 individual-level assumptions cannot be made. Fourth, we cannot rule out the possibility of ceiling
152 effects during months when testing capacity was limited (Figure S7). Finally, data on
153 socioeconomic variables was limited at the regional level hence further exploration of the case
154 burden by region could not be performed.

155 In conclusion, most of the interventions implemented by the Ghanaian government were
156 followed by an overall decrease in R_t estimates at the national scale, but it did not display a decline
157 across all regions. This highlights the importance of a sustained, multi-faceted response at the
158 national level to help mitigate the varying regional effects observed during this pandemic. Lastly,
159 the reopening of schools should be followed by stringent preventive and control measures targeting
160 both adults and children to counteract the increased likelihood of transmission once reopening
161 occurs.

Table 1: Public health and social measures interventions against COVID-19 implemented in Ghana^{1, 20-22}

Date	Label	Intervention	Location
15 th March 2020	A	<ul style="list-style-type: none"> Restricting all travels to Ghana. Suspension of all public gatherings including workshops, funerals, and religious activities. 	National
16 th March, 2020		<ul style="list-style-type: none"> Closure of all universities, senior high schools, and basic schools. 	National
17 th March, 2020		<ul style="list-style-type: none"> Mandatory 14-day quarantine for all travelers entering the country. Travel bans for all travelers who are not Ghanaian citizens or hold resident permits from countries with at least 200 cases. Isolation and testing of symptomatic individuals. Activation of contact tracing. 	
22 nd March 2020	B	<ul style="list-style-type: none"> Closure of all borders to human traffic for two weeks and suspension of passport services. 	National
26 th March 2020		<ul style="list-style-type: none"> Director-General of the Ghana Health Service recalled staff who were on study leave. 	National
28 th March 2020		<ul style="list-style-type: none"> Special health insurance coverage was offered to all frontline workers. 	National
30 th March 2020	L	<ul style="list-style-type: none"> Lockdown of major cities in two regions 	Regional
3 rd April 2020		<ul style="list-style-type: none"> The Director-General of the Ghana Health Service announced that nose masks were going to be manufactured locally. Disinfection of markets in Northern, North East, Savannah, and Eastern Regions. 	Regional
5 th April 2020		<ul style="list-style-type: none"> Extension of border closure for another two weeks 	National
27 th April 2020	C	<ul style="list-style-type: none"> Mandatory wearing of a mask at all businesses and organizations. 	National
11 th May 2020		<ul style="list-style-type: none"> Hotels, bars, and restaurants are permitted to operate following social distancing measures. Extension of the ban of social gathering till the end of May 	National

Transmission dynamics of COVID-19 in Ghana

5 th June 2020	D	<ul style="list-style-type: none"> • Relaxation of restrictions at social gatherings including church services with mandatory mask-wearing and maximum attendance of 100. 	National
15 th June 2020		<ul style="list-style-type: none"> • The president announced a fine for those who refused to wear a mask in public places. • Final year students in tertiary institutions went back to school. 	National
21 st June 2020		<ul style="list-style-type: none"> • The president approved the construction of hospital-related facilities in the Greater Accra and Ashanti regions. 	Regional
6 th July 2020	E	<ul style="list-style-type: none"> • Deployment of personnel to monitor COVID-19 cases in high schools. 	National
18 th July 2020		<ul style="list-style-type: none"> • Two-phase fumigation exercise. 	National
26 th July 2020		<ul style="list-style-type: none"> • COVID-19 related restrictions on transport operators and tourist sites were lifted. 	National
1 st August 2020		<ul style="list-style-type: none"> • Ease of restrictions on religious activities as the duration of service increased from 1 hour to 2 hours. 	National
1 st September 2020	F	<ul style="list-style-type: none"> • Reopening of international air border with mandatory testing of all passengers. 	National
7 th September 2020		<ul style="list-style-type: none"> • Relief package announced for private schools affected by school closures. 	National
9 th January 2021	G	<ul style="list-style-type: none"> • Re-opening of schools 	National

Transmission dynamics of COVID-19 in Ghana

Figure legends

Figure 1: The daily number of new cases (left panels), 7-day sliding window R_t (middle panel) and nonoverlapping window R_t (right panel) estimated using the in the ‘EpiEstim’ package in Ghana, Greater Accra, and the Ashanti region, March 12, 2020—January 30, 2021. The government policies represented by the alphabets in the figure are: A = restrictions of all travels to Ghana, suspension of social gatherings, school closure, mandatory 14-day quarantine for all travelers, B = closure of all borders to human traffics, L= lockdown of major cities, C = mandatory wearing of a mask at all businesses and organizations, D = relaxation of restrictions at social gatherings, E = deployment of personnel to monitor COVID-19 cases in high schools, F = reopening of international borders and G = Re-opening of schools.

Figure 2: Linear regression models between \log_{10} -transformed per capita cumulative case count and \log_{10} -transformed population size of the sixteen regions of Ghana (grey areas representing the 95% confidence intervals of the regression lines) at 4-time points: June 30, August 31, October 31, and December 31, 2020.

Transmission dynamics of COVID-19 in Ghana

Co-Author Contact Information:

Sylvia K. Ofori, Georgia Southern University: so01935@georgiasouthern.edu

Jessica S. Schwind, Georgia Southern University: jschwind@georgiasouthern.edu

Kelly L. Sullivan, Georgia Southern University: ksullivan@georgiasouthern.edu

Benjamin J. Cowling, The University of Hong Kong: bcowling@hku.hk

Gerardo Chowell, Georgia State University: gchowell@gsu.edu

Declaration of competing interests:

Prof. Benjamin Cowling declares that he was a consultant for Roche and Sanofi Pasteur. All other co-authors declare no competing interest.

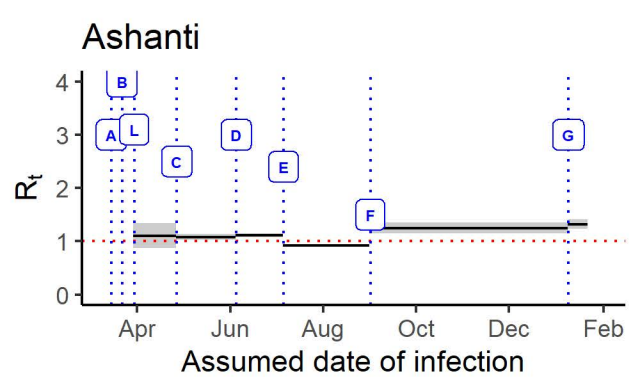
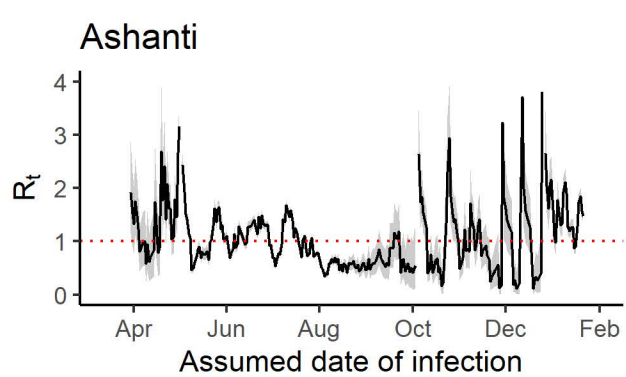
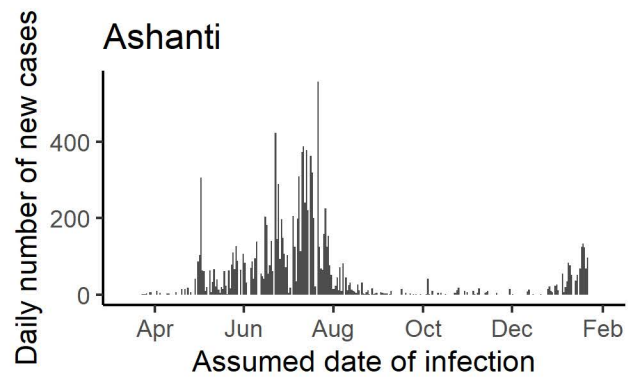
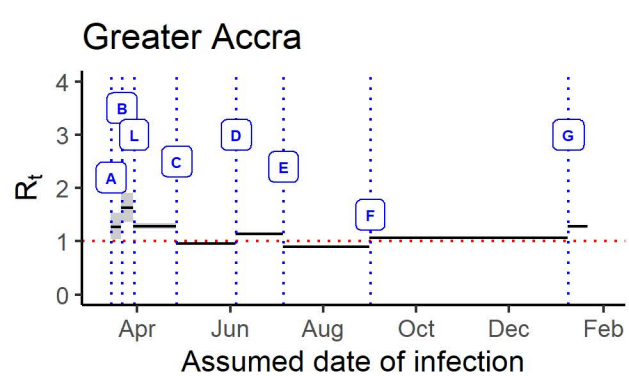
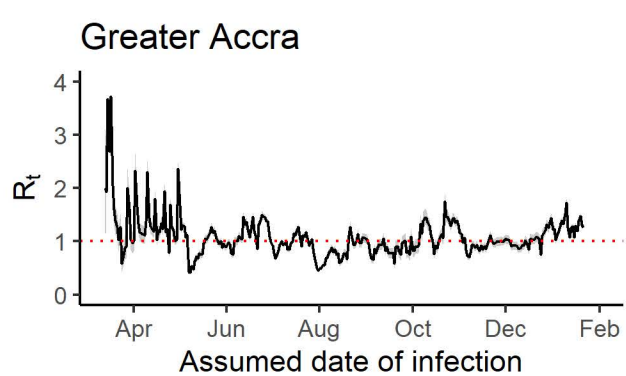
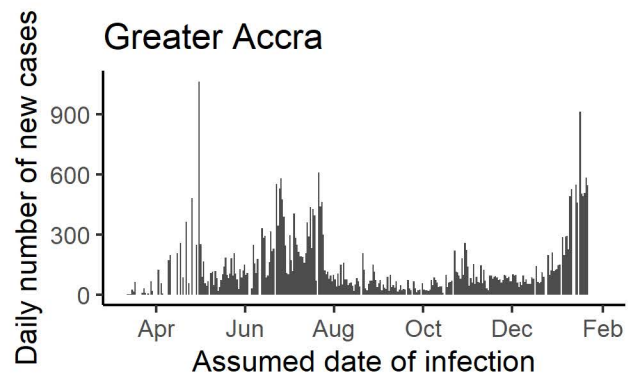
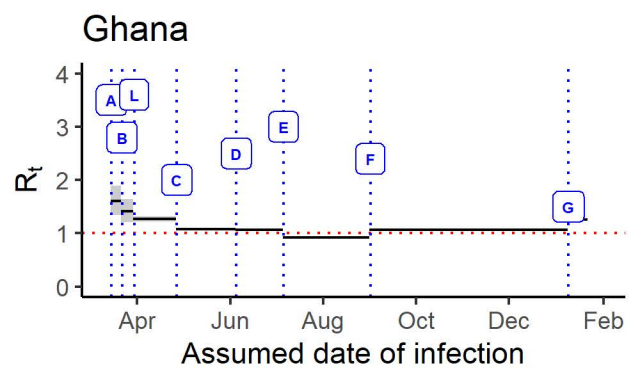
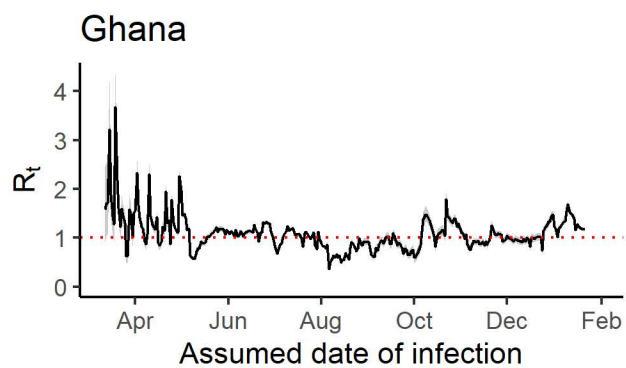
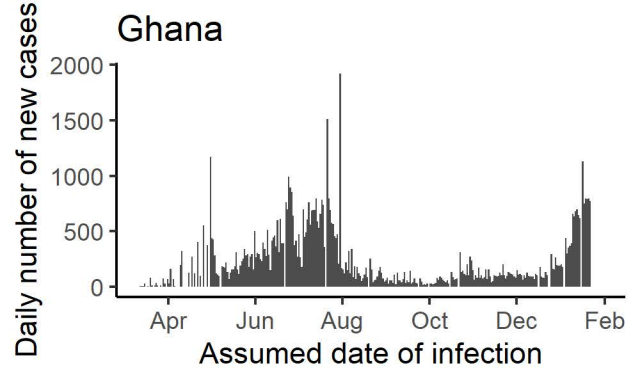
Transmission dynamics of COVID-19 in Ghana

REFERENCES

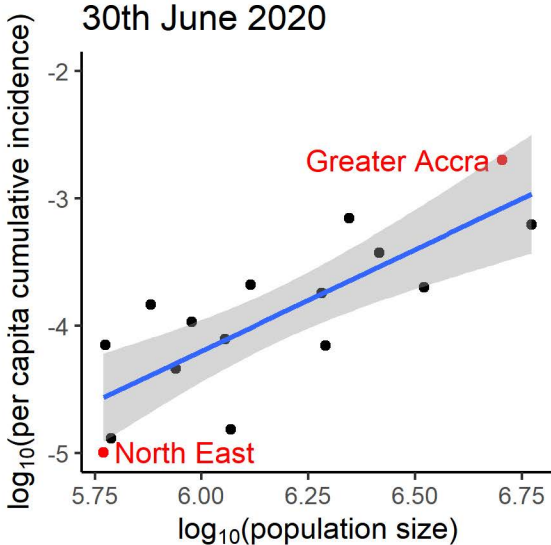
1. Ghana Health Service. COVID-19 Ghana's Outbreak Response Management Updates. Accessed January 31, 2021, 2021. <https://ghanahealthservice.org/covid19/archive.php>
2. Sibiri H, Zankawah S, Prah D. Coronavirus diseases 2019 (COVID-19) response: Highlights of Ghana's scientific and technological innovativeness and breakthroughs. *Ethics Med Public Health*. 2020;14:100537.
3. Hale T, Angrist N, Goldszmidt R, et al. A global panel database of pandemic policies (Oxford COVID-19 Government Response Tracker). *Nature Human Behaviour*. 2021;5(4):529-538.
4. Asamoah JKK, Owusu MA, Jin Z, Oduro FT, Abidemi A, Gyasi EO. Global stability and cost-effectiveness analysis of COVID-19 considering the impact of the environment: using data from Ghana. *Chaos Solitons Fractals*. 2020;140:110103-110103. doi:10.1016/j.chaos.2020.110103
5. Cori A, Ferguson NM, Fraser C, Cauchemez S. A New Framework and Software to Estimate Time-Varying Reproduction Numbers During Epidemics. *American Journal of Epidemiology*. 2013;178(9):1505-1512. doi:10.1093/aje/kwt133
6. Chowell G. Fitting dynamic models to epidemic outbreaks with quantified uncertainty: A primer for parameter uncertainty, identifiability, and forecasts. *Infectious Disease Modelling*. 2017;2(3):379-398.
7. Centers for Disease Control and Prevention. COVID-19 Pandemic Planning Scenarios. Accessed November 12, 2020. <https://www.cdc.gov/coronavirus/2019-ncov/hcp/planning-scenarios.html>.
8. Chowell G, Bettencourt LM, Johnson N, Alonso WJ, Viboud C. The 1918–1919 influenza pandemic in England and Wales: spatial patterns in transmissibility and mortality impact. *Proceedings of the Royal Society B: Biological Sciences*. 2008;275(1634):501-509.
9. Google LLC. Google COVID-19 Community Mobility Reports. Accessed April 27, 2021, <https://www.google.com/covid19/mobility>
10. Adegboye OA, Adekunle AI, Gayawan E. Early Transmission Dynamics of Novel Coronavirus (COVID-19) in Nigeria. *Int J Environ Res Public Health*. 2020;17(9):3054. doi:10.3390/ijerph17093054
11. Masoud M, Gewaifel G, Gamaleldin N. Transmissibility and mortality trends of COVID-19 epidemic in Egypt. *Alexandria Journal of Medicine*. 2020/01/01 2020;56(1):189-195. doi:10.1080/20905068.2020.1845442
12. Brand SP, Aziza R, Kombe IK, et al. Forecasting the scale of the COVID-19 epidemic in Kenya. *medRxiv*. 2020;doi:<https://doi.org/10.1101/2020.04.09.20059865>
13. Dwomoh D, Iddi S, Adu B, et al. Mathematical modeling of COVID-19 infection dynamics in Ghana: Impact evaluation of integrated government and individual level interventions. *Infectious Disease Modelling*. 2021;6:381-397.
14. Jahangiri M, Jahangiri M, Najafgholipour M. The sensitivity and specificity analyses of ambient temperature and population size on the transmission rate of the novel coronavirus (COVID-19) in different provinces of Iran. *Science of the total environment*. 2020;728:138872.
15. Lulbadda KT, Kobbekaduwa D, Guruge ML. The impact of temperature, population size and median age on COVID-19 (SARS-CoV-2) outbreak. *Clinical Epidemiology and Global Health*. 2021/01/01/2021;9:231-236. doi:<https://doi.org/10.1016/j.cegh.2020.09.004>
16. Ribeiro HV, Sunahara AS, Sutton J, Perc M, Hanley QS. City size and the spreading of COVID-19 in Brazil. *PLoS One*. 2020;15(9):e0239699-e0239699. doi:10.1371/journal.pone.0239699
17. Quakyi NK, Agyemang Asante NA, Nartey YA, Bediako Y, Sam-Agudu NA. Ghana's COVID-19 response: the Black Star can do even better. *BMJ global health*. 2021;6(3):e005569. doi:10.1136/bmjgh-2021-005569

Transmission dynamics of COVID-19 in Ghana

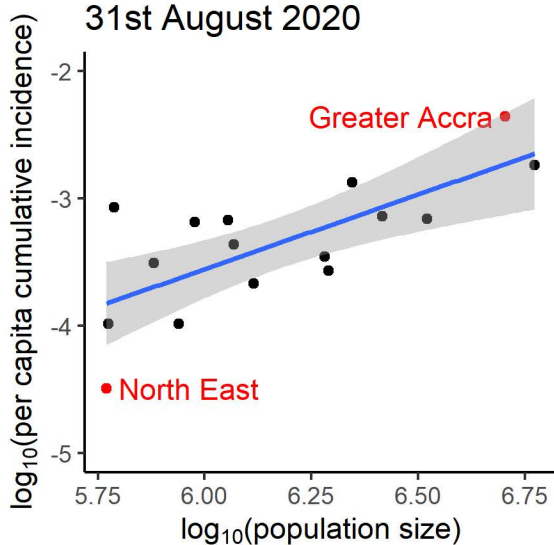
18. Nouvellet P, Bhatia S, Cori A, et al. Reduction in mobility and COVID-19 transmission. *Nature Communications*. 2021/02/17 2021;12(1):1090. doi:10.1038/s41467-021-21358-2
19. Jemima Esinam Kuatsinu. Ghana: Easing of Restrictions On Religious Activities - Churches Reluctant to Congregate for Worship. *The Ghanaian Times*. 4 JUNE 2020. Accessed 05/01/2021. <https://allafrica.com/stories/202006040675.html>
20. Nyabor J. Coronavirus: Government bans religious activities, funerals, all other public gatherings. *CITI NEWSROOM*. March 15, 2020. Accessed May 01, 2021. <https://citinewsroom.com/2020/03/government-bans-church-activities-funerals-all-other-public-gatherings/>
21. Donald Ato Dapatem CN. Ghana closes its borders for 2 weeks to fight Coronavirus. *GRAPHIC ONLINE*. Accessed 09/25/2020. <https://www.graphic.com.gh/news/general-news/ghana-news-coronavirus-borders-closed-directive-will-last-2-weeks.html>
22. Frimpong ED. All Ghana Health Service staff on study leave recalled for Coronavirus 'fight'. *Graphic online*. March 27, 2020. Accessed 3/4/2021. <https://www.graphic.com.gh/news/general-news/all-ghana-health-service-staff-on-study-leave-recalled-for-coronavirus-fight.html>



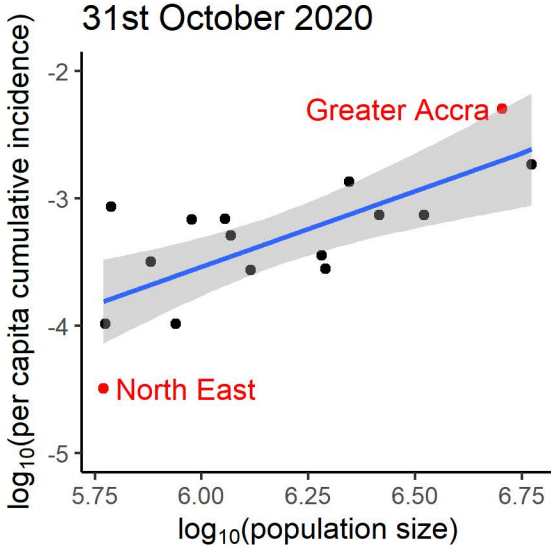
30th June 2020



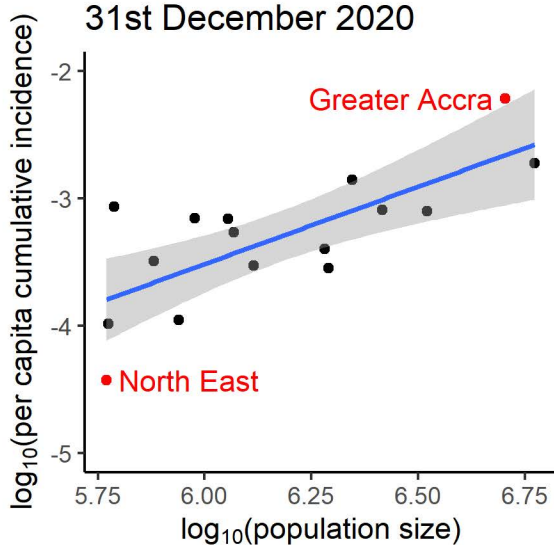
31st August 2020



31st October 2020



31st December 2020



Transmission dynamics of COVID-19 in Ghana and the impact of public health interventions

Sylvia K. Ofori,¹ Jessica S. Schwind,¹ Kelly L. Sullivan,¹ Benjamin J. Cowling,² Gerardo Chowell,³ Isaac Chun-Hai Fung^{1*}

Online Supplementary Materials

Supplementary text for Methods

Timeline for regions

At the regional level, the time series began when the first cases were reported consecutively and ended after cases were consecutively reported. For example, for Central Region, the time series began on 7th May 2020. This was done to avoid estimating the R_t too early in the pandemic and to minimize error and uncertainty around the R_t .

The reproduction number, R_t , from daily incidence using the generalized growth model (GGM)

The daily number of new infections for the first 25 days of the epidemic and selected regional levels are calibrated using the Generalized Growth Model (GGM).¹ The GGM uses a simple generalized model for the ascending case of an epidemic using the equation:

$$\frac{dC(t)}{dt} = C'(t) = rC(t)^p$$

where $C'(t)$ characterizes the epidemic curve (incident case count) over the time t and the solution $C(t)$ which is the cumulative incidence at a given time t , r is a positive number defined as the growth rate ($1/t$), and $p \in [0, 1]$ is the “deceleration of growth parameter”. At a p of zero, the equation describes the constant incidence and at $p=1$, the equation outlines the exponential growth dynamics. Values of p between 0 and 1 describe sub-exponential growth patterns.²

We first assume a gamma distribution for the generation interval of SARS-CoV-2 with a mean of 4.60 days and a standard deviation of 5.55 days,^{3,4} then estimate the growth rate parameter r , and the deceleration of growth parameter, p . The GGM model simulates the growth of total cases (both imported and local cases) at I_i , and estimates the reproduction using the renewal equation:⁵

$$R_{t_i} = \frac{I_i}{\sum_{j=0}^i (I_{i-j} + \alpha J_{i-j}) \rho_j}$$

The imported cases at a given time t are given as J_i ; the local incidence is I_i at calendar time t_i ; and ρ_j represents the discretized probability distribution of generation interval. The factor α measures the relative contribution of imported cases to the transmission process and is assumed to be 0.15. The total number of new cases is the numerator at a given time $t = I_i$, and the denominator is the total number of primary cases that generated the secondary cases. Thus, the reproduction number is the average number of new cases generated by a primary case at a given calendar time. The uncertainty around the R_t is derived from the parameter estimates (r , p). The R_t is estimated from 300 simulations assuming a negative binomial structure with a mean which is assumed to be a third of the variance.² The R_t for the national curve is estimated from the first twenty-five days of infection (March 12th – April 5th, 2020).

Time-varying reproduction number R_t , using the Instantaneous Reproduction Number method (Cori et al. method).

The R_t is used because it can be estimated easily in real-time and when control measures are implemented.

The instantaneous reproduction number method in the R package EpiEstim developed by Cori et al and Thompson et al. was used in the analysis.^{6, 7} The EpiEstim package uses a Bayesian framework assuming a gamma prior distribution for the posterior distribution for R_t .^{3, 6, 8} The parametric method was used in which the serial interval was assumed to follow a gamma distribution with a mean of 4.60 days and a standard deviation of 5.55.^{3, 4}

R_t using 7-day sliding windows.

The instantaneous reproduction number was estimated over a 7-day sliding window given the high variation in daily R_t estimates. The R_t was assumed to be constant in each time window and the average of R_t estimates over 7 days was estimated with its credible intervals.

R_t using non-overlapping windows to assess the impact of various interventions.

This method is used to compare the R_t before, during, and after a policy is implemented to assess its impact on transmission.⁷ An average was taken of the R_t estimates over the period between two policy change time points. The data on the major interventions and newly implemented policies were obtained from the Ghana Health Service website as well as the websites of the major news media. The following data were collected: travel bans and border closures, restriction of social activities, school closure, the mandatory wearing of masks, relaxation of restrictions on social and religious activities, deployment of personnel to monitor COVID-19 in senior high schools, reopening of air borders, and reopening of schools. A detailed list of interventions and their references can be found in Table 1. Bundled policies were implemented in close succession; hence there is difficulty in assessing the individual effects.

Regression analysis

The power-law relationship between cumulative case count, C , and population size, N (i.e., $C \sim N^g$ where g is an exponent) was transformed into a relationship between \log_{10} -transformed per-capita cumulative case count and \log_{10} -transformed population size as follows:⁹

$$\frac{\log_{10}(\text{cumulative case count})}{\log_{10}(\text{population size})} = g$$

$$\frac{\log_{10}(\text{per capita cumulative case count} \times \text{population size})}{\log_{10}(\text{population size})} = g$$

$$\frac{\log_{10}(\text{per capita cumulative case count})}{\log_{10}(\text{population size})} + \frac{\log_{10}(\text{population size})}{\log_{10}(\text{population size})} = g$$

$$\frac{\log_{10}(\text{per capita cumulative case count})}{\log_{10}(\text{population size})} = g - 1 = m$$

The per capita cumulative case count was calculated by dividing the total cumulative case count by the population size of the nation or region at the specified time point. A linear regression model was fit to the data of \log_{10} -transformed per capita cumulative case count and \log_{10} -transformed population size. The slope m of the regression line (where $m=g-1$) can be interpreted as follows: if $m=0$, there is a homogeneity of per capita cumulative case count across regions; if $m<0$, low-population regions have higher per capita cumulative case count than high-population regions; and if $m>0$, low-population regions have lower per capita cumulative case count than high-population regions.⁹ The 2020 population estimates for Ghana and the regions were obtained from the Ghana Statistical Service.¹⁰

Google mobility data

The mobility data was sourced from Google to analyze changes in the number of visits to places in the following categories: (a) grocery and pharmacy, (b) parks, (c) transit stations, (d) retail and recreation, (e) residential, and (f) workplaces.¹¹ The data provides information for how visits and duration of staying at different places changes compared to baseline values which is the median value for the corresponding day of the week, during the five weeks of January 3 — February 6, 2020. The data is representative of users who opted for location history. The relationship between mobility and the daily number of new infections (or R_t estimates from a 7-day sliding window) is assessed using the time-lagged cross-correlation.

Supplementary text for Results

Epidemic curves

The daily incidence of COVID-19 in Ghana, the Greater Accra Region, and the Ashanti region decreased from mid-May to mid-June and surged in mid-July, 2020. For all three locations, the daily incidence dropped again to less than 500 per day and spiked again in January 2021 (Figure 1). Western and Western North regions daily cases peaked in June and July 2020 (150 and around 100 respectively) (Figure S2). The daily incidence for Central, Oti, Volta, and Eastern regions fluctuated throughout the study period: the peak times were in July and December 2020 (Central=around 90 cases), August 2020 (Eastern>150), and June 2020 (> 40 for Oti, and Volta) (Figures S1-S2). Bono East and Ahafo cases were clustered between June and September 2020 and peaked in July at 75 and >150 cases per day respectively (Figure S4). Savannah (Figure S4), Upper East, and Upper West (Figure S3) recorded spurious cases sparingly throughout the year.

Comparing R_t Estimates using GGM and Cori et al. method.

Using the GGM, the COVID-19 R_t estimate for Ghana was estimated at 1.2 (95% CI: 1.2, 1.3) for the first 25 days of the epidemic compared to that estimated using the Cori et al. method, which estimated the R_t at 1.67 (95% CI: 1.53, 1.82).

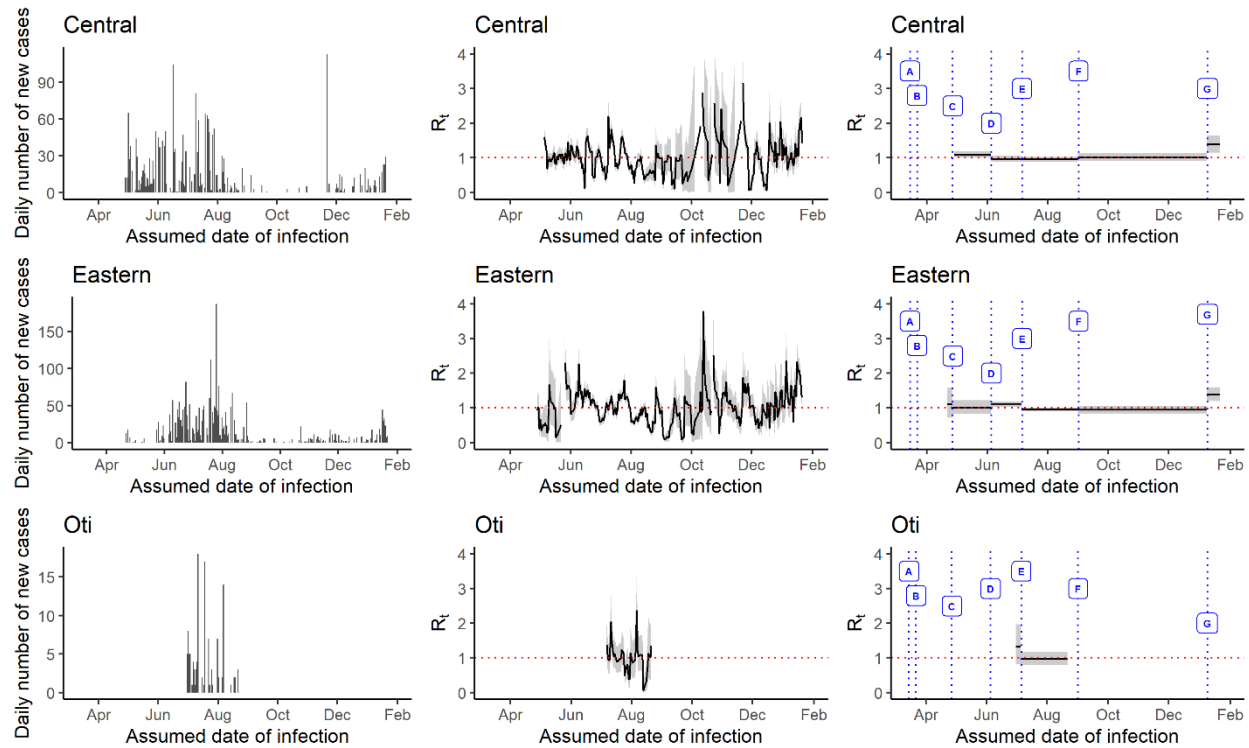
The difference in estimates may be because in the Cori et al. method, fluctuations in daily number of new infections are treated as true reflections of the underlying epidemic while the GGM method treats these fluctuations as noise by assuming an error structure underneath. Hence, the estimated value of R_t using the Cori et al. method may provide a better reflection of how early interventions and policy changes affected the R_t at the national level for this study.

Table S1: Cumulative number of cases and cumulative incidence rate by region as of January 30, 2021 (N= 67,782)

Region	Population	Cumulative Number of Cases	Cumulative Number of Cases per 100,000
Ghana (national)	32,000,000	67,782	211.82
Ahafo	613,000	548	89.40
Ashanti	5,924,500	12,444	210.04
Bono	1,168,800	667	57.07
Bono East	1,133,800	814	71.79
Central	2,605,500	2321	89.08
Eastern	3,318,900	2880	86.78
Greater Accra	5,055,900	36429	720.52
North East	588,800	25	4.25
Northern	1,948,900	716	36.74
Oti	759,800	246	32.37
Savannah	594,700	63	10.59
Upper East	1,302,700	713	54.73
Upper West	868,500	211	24.29
Volta	1,907,700	988	51.79
Western	2,214,700	3563	160.88
Western North	949,100	869	91.56

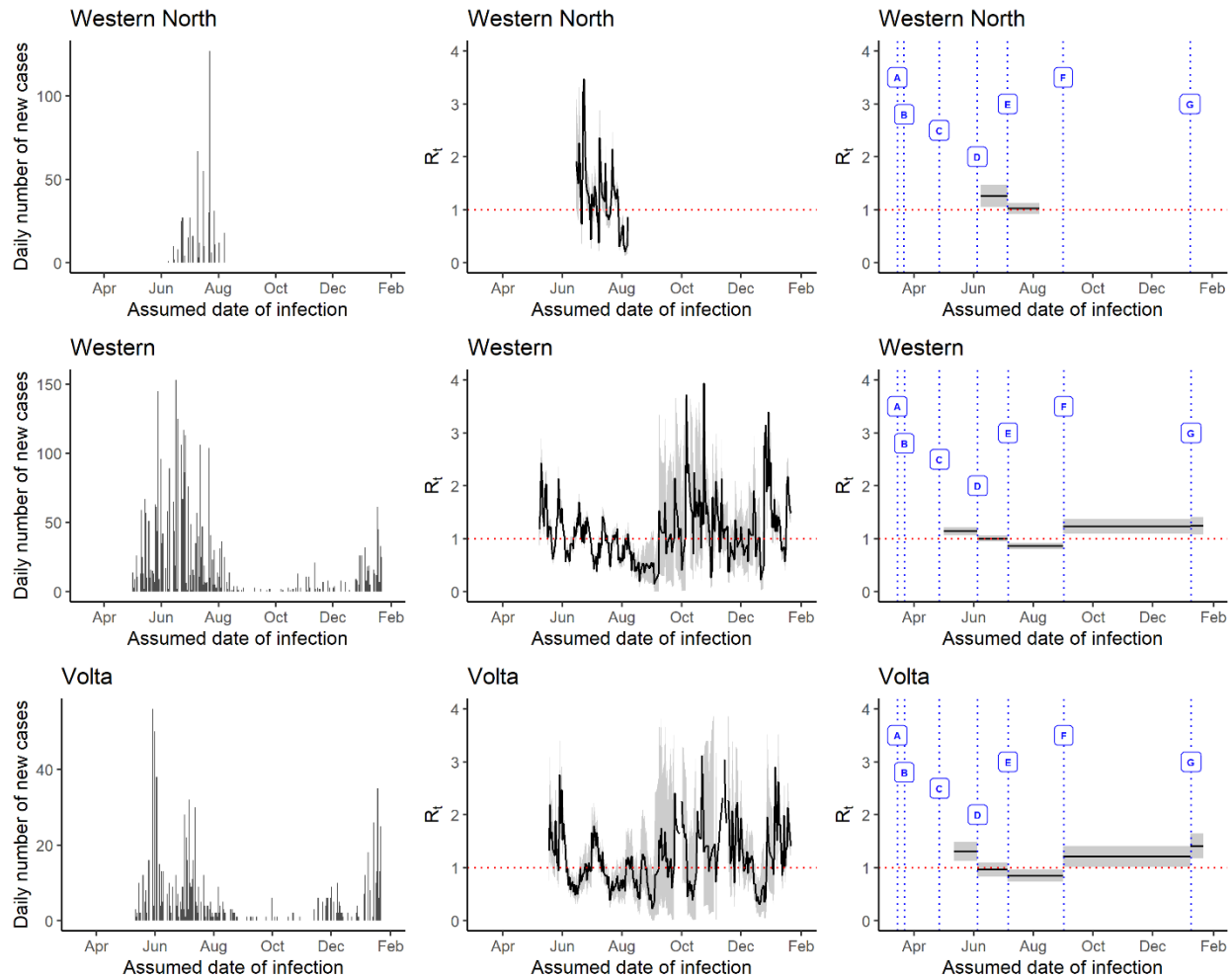
(2020 projection)

Figure S1: The daily number of new cases (left panel), 7-day sliding window R_t (middle panel) and nonoverlapping window R_t (right panel) estimated using the Cori et al. method in the ‘EpiEstim’ package, in Central, Eastern, and the Oti regions, Ghana, March 12, 2020—January 30, 2021.



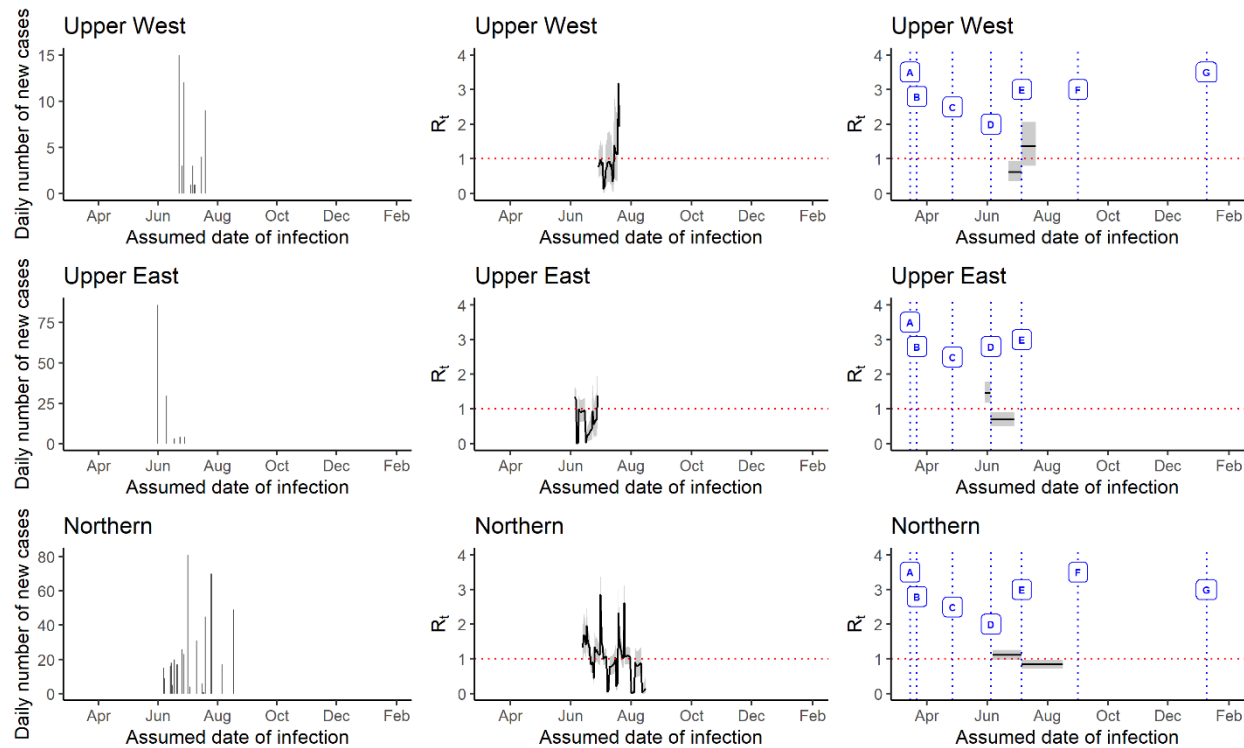
The government policies represented by the alphabets in the figure are: A = restrictions of all travels to Ghana, suspension of social gatherings, school closure, mandatory 14-day quarantine for all travelers; B = closure of all borders to human traffics; C = mandatory wearing of facemasks at all businesses and organizations; D = relaxation of restrictions at social gatherings; E = deployment of personnel to monitor COVID-19 cases in high schools; F = reopening of international borders; and G= Re-opening of schools.

Figure S2: The daily number of new cases (left panel), 7-day sliding window R_t (middle panel) and nonoverlapping window R_t (right panel) estimated using the Cori et al. method in the ‘EpiEstim’ package, in Western North, Western, and the Volta regions, Ghana, March 12, 2020—January 30, 2021.



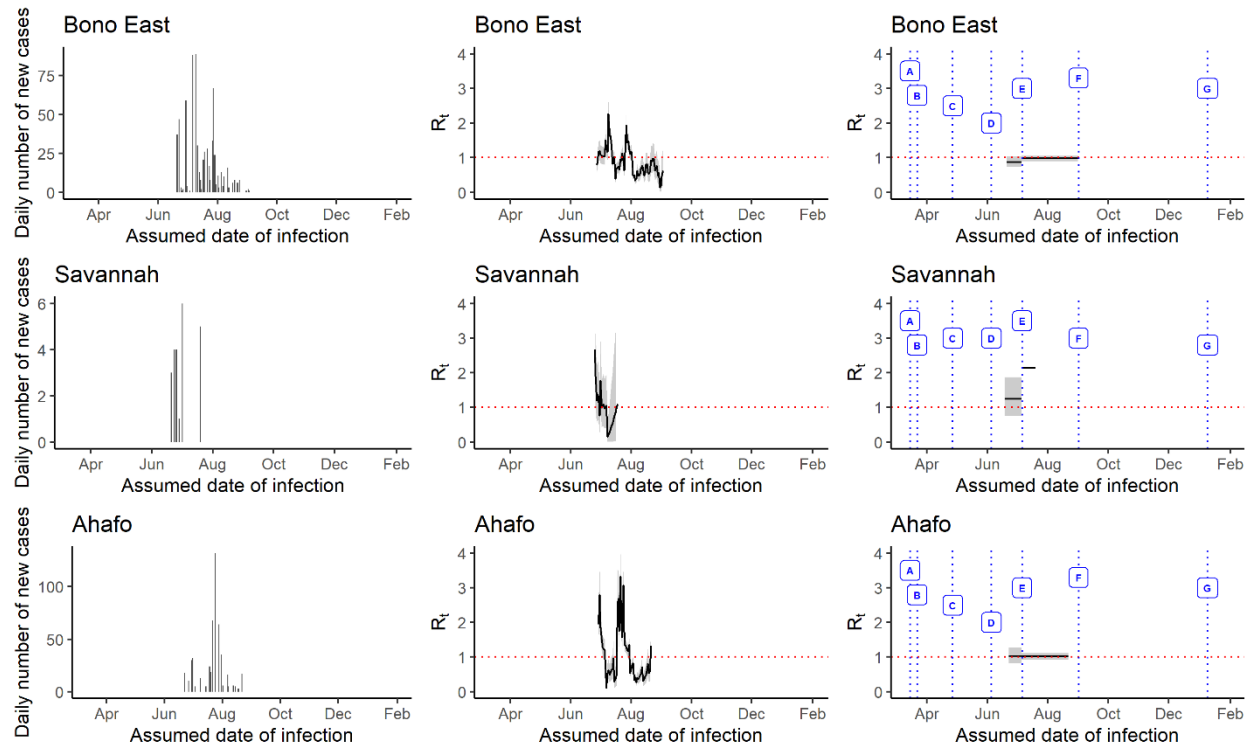
The government policies represented by the alphabets in the figure are: A = restrictions of all travels to Ghana, suspension of social gatherings, school closure, mandatory 14-day quarantine for all travelers; B = closure of all borders to human traffics; C = mandatory wearing of facemasks at all businesses and organizations; D = relaxation of restrictions at social gatherings; E = deployment of personnel to monitor COVID-19 cases in high schools; F = reopening of international borders; and G= Re-opening of schools.

Figure S3: The daily number of new cases (left panel) in Upper West, Upper East, and the Northern regions, Ghana, March 12, 2020—January 30, 2021, 7-day sliding window R_t (middle panel) and nonoverlapping window R_t (right panel) estimated using the Cori et al. method in the ‘EpiEstim’ package.



The government policies represented by the alphabets in the figure are: A = restrictions of all travels to Ghana, suspension of social gatherings, school closure, mandatory 14-day quarantine for all travelers; B = closure of all borders to human traffics; C = mandatory wearing of facemasks at all businesses and organizations; D = relaxation of restrictions at social gatherings; E = deployment of personnel to monitor COVID-19 cases in high schools; F = reopening of international borders; and G= Re-opening of schools.

Figure S4: The daily number of new cases (left panel) in Bono East, Savannah, and the Ahafo regions, Ghana, March 12, 2020—January 30, 2021, 7-day sliding window R_t (middle panel) and nonoverlapping window R_t (right panel) estimated using the Cori et al. method in the ‘EpiEstim’ package.



The government policies represented by the alphabets in the figure are: A = restrictions of all travels to Ghana, suspension of social gatherings, school closure, mandatory 14-day quarantine for all travelers; B = closure of all borders to human traffics; C = mandatory wearing of facemasks at all businesses and organizations; D = relaxation of restrictions at social gatherings; E = deployment of personnel to monitor COVID-19 cases in high schools; F = reopening of international borders; and G= Re-opening of schools.

Table S2: Median estimates and 95% credible intervals of nonoverlapping window R_t for each period between each policy change (left) and percent changes in nonoverlapping window R_t and associated 95% credible intervals with given policies.

Policy change	R_t		Percentage change (%)	
	Median	95% Credible Interval	Median	95% Credible Interval
National				
Before A	1.55	1.03, 2.24		
A to B	1.60	1.34, 1.90	+2.49	-28.13, +49.46
B to L	1.41	1.20, 1.64	-12.06	-10.14, -13.75
L to C	1.27	1.22, 1.32	-10.33	-23.63, +5.88
C to D	1.07	1.05, 1.10	-15.34	-13.72, -16.97
D to E	1.07	1.05, 1.09	-0.53	-0.16, -0.91
E to F	0.92	0.91, 0.94	-13.50	-11.90, -15.06
F to G	1.07	1.05, 1.09	+15.79	+13.67, +17.95
Beyond G	1.26	1.23, 1.28	+17.67	+17.25, +18.10
Regions				
Greater Accra				
Before A	1.66	1.03, 2.51		
A to B	1.27	1.04, 1.53	-22.91	-52.89, +25.72
B to L	1.62	1.37, 1.90	+27.51	+24.44, +31.03
L to C	1.29	1.23, 1.34	-20.89	-33.38, -5.49
C to D	0.96	0.93, 0.98	-25.58	-26.68, -24.48
D to E	1.14	1.11, 1.17	+19.40	+18.72, +20.08
E to F	0.9	0.88, 0.92	-21.18	-21.29, -21.08
F to G	1.06	1.04, 1.08	+17.84	+17.61, +18.10
Beyond G	1.28	1.24, 1.31	+20.37	+19.59, +21.83
Ashanti				
Before L	3.03	1.85, 4.61		
L to C	1.09	0.87, 1.34	-63.65	-78.19, -39.94
C to D	1.08	1.03, 1.13	-1.02	-20.87, +24.45
D to E	1.11	1.08, 1.15	+2.86	+1.80, +3.92
E to F	0.92	0.90, 0.94	-17.41	-18.03, -16.80
F to G	1.25	1.15, 1.35	+12.09	+2.98, +22.56
Beyond G	1.32	1.23, 1.41	+5.89	-2.67, +15.09
Central				
Before D	1.09	1.01, 1.19		
D to E	0.97	0.89, 1.06	-11.16	-11.79, -10.54
E to F	0.96	0.89, 1.03	-1.49	-10.18, +7.55
F to G	1.02	0.91, 1.14	+6.47	-4.68, +19.60
Beyond G	1.38	1.15, 1.64	+36.22	+12.46, +65.03
Eastern				
Before C	1.09	0.72, 1.58		
C to D	1.01	0.82, 1.22	-8.03	-36.57, +34.51
D to E	1.11	1.03, 1.19	+10.02	-8.77, +33.73

E to F	0.96	0.91, 1.01	-13.52	-20.91, -5.67
F to G	0.94	0.83, 1.05	-2.01	-13.88, +12.21
Beyond G	1.38	1.19, 1.59	+47.37	+25.05, +73.86
Oti				
Before E	1.30	0.81, 1.60		
Beyond E	0.97	0.79, 1.18	-24.90	-54.16, +22.61
Savannah				
Before E	1.22	0.75, 1.87		
Beyond E	2.02	0.78, 4.16	+65.89	-36.9463, +306.7187
Volta				
Before D	1.30	1.33, 1.49		
D to E	0.96	0.83, 1.10	-26.49	-26.75, -26.26
E to F	0.84	0.73, 0.96	-12.10	-12.44, -11.73
F to G	1.20	1.02, 1.41	+43.09	+39.94, +46.99
Beyond G	1.40	1.17, 1.65	+16.17	+15.81, +16.49
Western North				
Before E	1.25	1.05, 1.47		
Beyond E	1.02	0.92, 1.12	-18.48	-32.42, +0.03
Western				
Before D	1.14	1.07, 1.22		
D to E	1.00	0.95, 1.06	-12.12	-19.35, -4.33
E to F	0.86	0.80, 0.92	-14.10	-21.36, -5.80
F to G	1.23	1.09, 1.37	+42.75	+27.78, +60.27
Beyond G	1.24	1.08, 1.41	+1.11	-6.39, +9.82
Bono East				
Before E	0.88	0.73, 1.04		
Beyond E	0.97	0.89, 1.06	+1.11	-7.47, +32.14
Northern				
Before E	1.11	0.97, 1.26		
Beyond E	0.84	0.72, 0.97	-23.86	-36.47, -8.65
Ahafo				
Before E	1.02	0.81, 1.27		
Beyond E	1.01	0.92, 1.11	-1.47	-21.11, +23.01
Upper East				
Before D	1.46	1.17, 1.78		
Beyond D	0.68	0.50, 0.91	-52.86	-65.12, -34.95
Upper West				
Before E	0.61	0.36, 0.95		
Beyond E	1.33	0.81, 2.06	+119.28	+116.83, +122.91

Table S3: Linear regression analysis between the \log_{10} -transformed per capita cumulative case count and \log_{10} -transformed population size using cumulative incidence for sixteen regions.

Time point	Slope	95% confidence interval	P value
30 th June, 2020	1.59	0.91, 2.28	0.0002
31 st August, 2020	1.17	0.53, 1.82	0.0016
31 st October, 2020	1.19	0.54, 1.84	0.0014
31 st December, 2020	1.21	0.57, 1.85	0.0011

Fig S5: Results from the Generalized Growth Model. Upper panel shows estimated reproduction number for Ghana with 95% CI from March 12, 2020, to April 5, 2020. The growth rate, r , 2.2 (95% CI: 1.5, 3.1), deceleration growth parameter, p , 0.46 (95% CI: 0.39, 0.54). The lower panel shows the GGM fit of the daily reported number of new infections using the first 25 days of data.

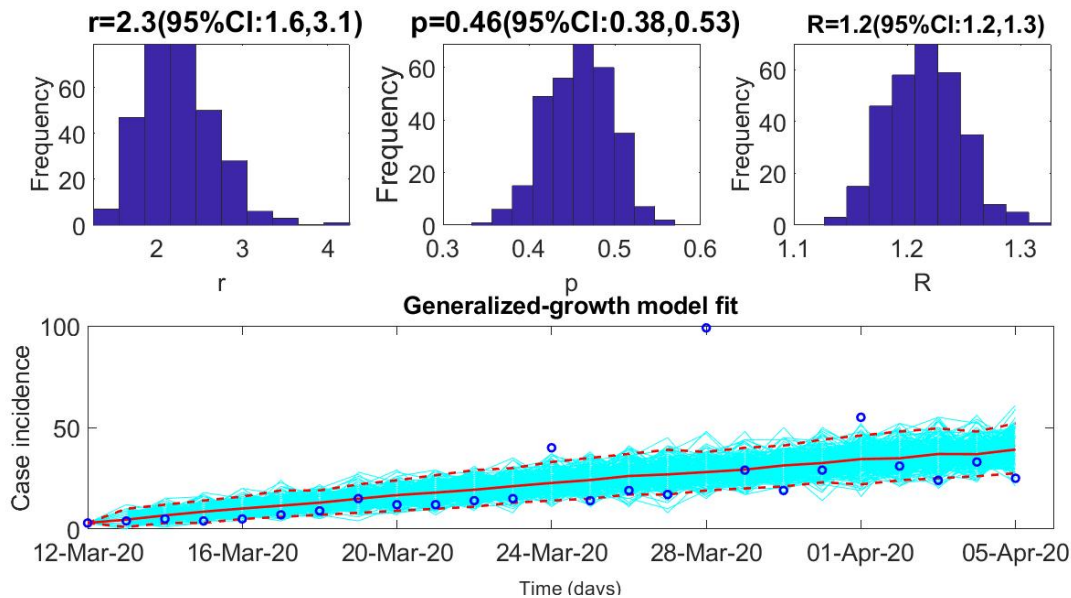


Fig S6: Google mobility trends by type of mobility: retail and recreation (first panel), grocery and pharmacy (second panel), workplaces (third panel) and residential (fourth panel) from February 15, 2020, to April 7, 2021.

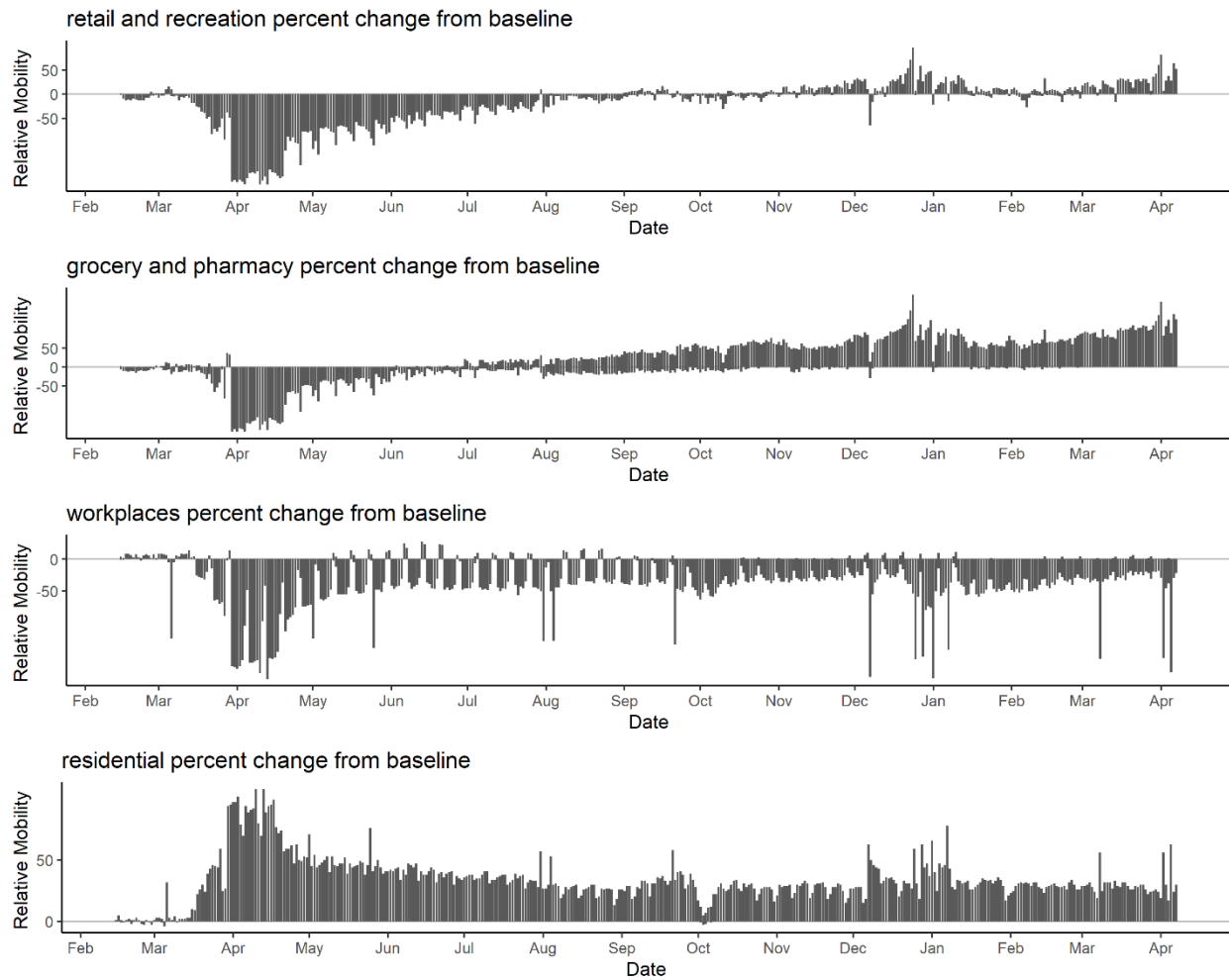


Table S4: Time-lag correlation coefficients between the daily number of new COVID-19 cases, and relative mobility (percentage change from baseline) for trips to retails and recreation, grocery and pharmacy, workplace, and residential categories over the first 90 days of the pandemic in Ghana.

Lag (days)	Retail and recreation		Grocery and pharmacy		Workplace		Residential	
	r	P value	r	P value	r	P value	r	P value
-3	0.167	0.113	0.227	0.031*	0.094	0.373	-0.060	0.570
-2	0.146	0.167	0.202	0.055	0.186	0.078	-0.066	0.534
-1	0.133	0.208	0.182	0.084	0.225	0.033*	-0.084	0.426
0	0.155	0.141	0.224	0.034*	0.269 ^a	0.011*	-0.133	0.206
1	0.161	0.126	0.196	0.062	0.161	0.126	-0.074	0.480
2	0.250 ^a	0.018*	0.291 ^a	0.006*	0.149	0.158	-0.154 ^a	0.145
3	0.221	0.036*	0.255	0.016*	0.184	0.081	-0.151	0.153

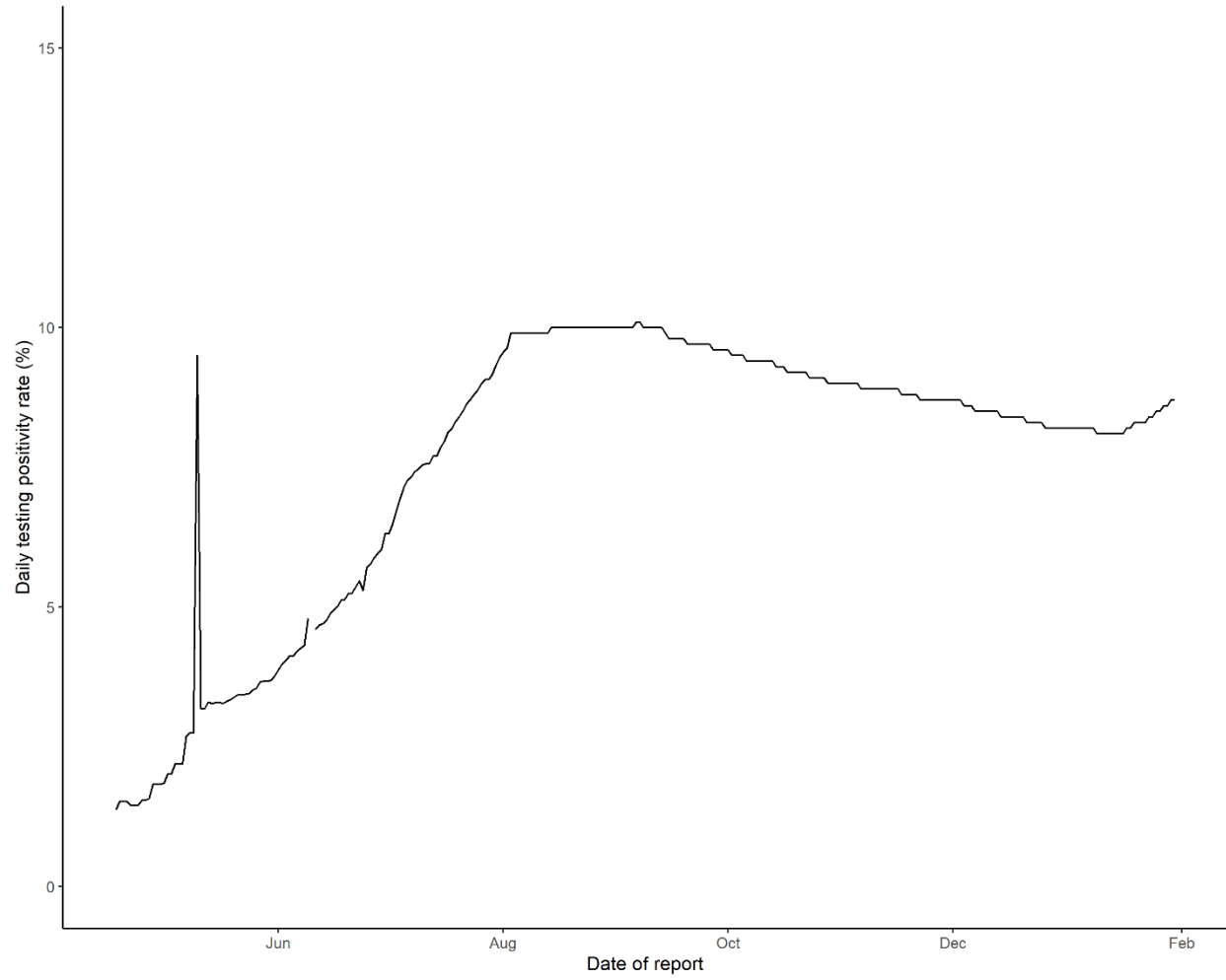
^a The model with the largest (absolute value) correlation coefficient in each category. *p<0.05

Table S5: Time-lag correlation coefficients between median 7-day sliding window R_t of COVID-19 and relative mobility (percentage change from baseline) for trips to retails and recreation, grocery and pharmacy, workplace, and residential categories over the first 90 days of the pandemic in Ghana.

Lag (days)	Retail and recreation		Grocery and pharmacy		Workplace		Residential	
	r	P value	r	P value	r	P value	r	P value
-3	0.067	0.523	-0.028	0.791	-0.017	0.873	-0.126	0.231
-2	0.070	0.506	-0.003	0.977	-0.003	0.976	-0.148	0.161
-1	0.034	0.748	-0.047 ^a	0.652	0.014	0.895	-0.133	0.207
0	0.070	0.504	-0.018	0.866	0.085 ^a	0.422	-0.213 ^a	0.043*
1	0.042	0.691	-0.045	0.673	0.025	0.814	-0.139	0.187
2	0.095 ^a	0.368	0.009	0.087	-0.006	0.953	-0.151	0.152
3	0.079	0.455	0.036	0.337	-0.009	0.930	-0.120	0.254

^a The model with the largest (absolute value) correlation coefficient in each category. *p<0.05

Fig S7: COVID-19 testing positivity rate in Ghana by date of report from April 18, 2020 to January 30, 2021.



REFERENCES

1. Viboud C, Simonsen L, Chowell G. A generalized-growth model to characterize the early ascending phase of infectious disease outbreaks. *Epidemics*. 2016;15:27-37.
2. Chowell G. Fitting dynamic models to epidemic outbreaks with quantified uncertainty: A primer for parameter uncertainty, identifiability, and forecasts. *Infectious Disease Modelling*. 2017;2(3):379-398.
3. Fung IC-H, Hung YW, Ofori SK, Muniz-Rodriguez K, Lai P-Y, Chowell G. SARS-CoV-2 Transmission in Alberta, British Columbia, and Ontario, Canada, December 25, 2019, to December 1, 2020. *Disaster Medicine and Public Health Preparedness*. 2021:1-10. doi:doi:10.1017/dmp.2021.78
4. You C, Deng Y, Hu W, et al. Estimation of the time-varying reproduction number of COVID-19 outbreak in China. *International Journal of Hygiene Environmental Health*. 2020;228:113555.
5. Nishiura H, Chowell G. Early transmission dynamics of Ebola virus disease (EVD), West Africa, March to August 2014. *Eurosurveillance*. 2014;19(36):20894.
6. Cori A, Ferguson NM, Fraser C, Cauchemez S. A New Framework and Software to Estimate Time-Varying Reproduction Numbers During Epidemics. *American Journal of Epidemiology*. 2013;178(9):1505-1512. doi:10.1093/aje/kwt133
7. Thompson R, Stockwin J, van Gaalen RD, et al. Improved inference of time-varying reproduction numbers during infectious disease outbreaks. *Epidemics*. 2019;29:100356.
8. Fraser C, Cummings DA, Klinkenberg D, Burke DS, Ferguson NM. Influenza transmission in households during the 1918 pandemic. *American journal of epidemiology*. 2011;174(5):505-514.
9. Chowell G, Bettencourt LM, Johnson N, Alonso WJ, Viboud C. The 1918–1919 influenza pandemic in England and Wales: spatial patterns in transmissibility and mortality impact. *Proceedings of the Royal Society B: Biological Sciences*. 2008;275(1634):501-509.
10. Ghana Statistical Service. Ghana's population by region, 2020. Accessed 04/07/2021, 2021. <https://www.statsghana.gov.gh/index.php?id=MjYzOTE0MjAuMzc2NQ==/webstats/4238n0op4p>
11. Google LLC. Google COVID-19 Community Mobility Reports. Accessed April 27, 2021, <https://www.google.com/covid19/mobility>