

1 Frequency of transmission, asymptomatic shedding, and airborne spread of *Streptococcus* 2 *pyogenes* among schoolchildren exposed to scarlet fever: a longitudinal multi-cohort molecular 3 epidemiology contact tracing study.

4 Rebecca Cordery MD¹, Amrit K. Purba MPH¹, Lipi Begum MPH¹, Ewurabena Mills BSc², Mia Mosavie MSc^{2,3}, Ana Vieira PhD^{2,3,4}, Elita Jauneikaite
5 PhD^{3,4,5}, Rhoda CY Leung MRes², Matthew K. Siggins PhD^{2,4}, Derren Ready PhD^{6,7}, Peter Hoffman BSc⁶, Theresa Lamagni PhD^{3,6}, Professor Shiranee
6 Sriskandan PhD^{2,3,4}

7
8 ¹London Health Protection Teams, Public Health England, London, United Kingdom; ²Department of Infectious Disease, Imperial College London, United
9 Kingdom; ³NIHR Health Protection Research Unit in Healthcare Associated Infections and Antimicrobial Resistance, Imperial College London, United
10 Kingdom; ⁴MRC Centre for Molecular Bacteriology & Infection, Imperial College London, United Kingdom; ⁵Department of Infectious Disease Epidemiology,
11 School of Public Health, Imperial College London, United Kingdom; ⁶National Infection Service, Public Health England, United Kingdom; ⁷NIHR Health
12 Protection Research Unit in Behavioural Science and Evaluation at the University of Bristol, Bristol, UK.

13
14 **Author for correspondence:** Shiranee Sriskandan, Section of Adult Infectious Disease, Department of Infectious Disease, Imperial College London,
15 Hammersmith Campus, London W12 0NN, UK. s.sriskandan@imperial.ac.uk

16 **Abstract**

17
18
19 **Background:** Despite recommendations regarding prompt treatment of cases and enhanced hygiene measures,
20 scarlet fever outbreaks increased in England between 2014-2018. We aimed to assess the impact of standard
21 interventions on transmission of *Streptococcus pyogenes* to classroom contacts, households, and classroom
22 environments.

23 **Methods:** We undertook a prospective, contact tracing study in schools with 2 consecutive scarlet fever cases that
24 were reported to local Health Protection teams in London between March 1st and May 31st in 2018 and 2019. We
25 cultured throat swabs from cases, household contacts, and classroom contacts at four time points. We also cultured
26 hand swabs and cough plates from all cases, and from classroom contacts in 2019. Surface swabs from toys and
27 other fomites in classrooms were cultured in 2018, and settle plates from classrooms were collected in 2019. Any
28 sample with *S. pyogenes* detected was recorded as positive and underwent *emm* genotyping and genome sequencing
29 to compare with the outbreak strain.

30 **Findings:** Six classes, comprising 12 scarlet fever cases, 17 household contacts, and 278 classroom contacts were
31 recruited from March 1st to May 31st in 2018 and the same period in 2019. Prevalence of the outbreak *S. pyogenes*
32 strain in throat swabs from asymptomatic classroom contacts was high, increasing from 9.6% (11/115) in week 1, to
33 26.9% (34/126) in week 2, to 24.1% (26/108) in week 3, then 14.3% (5/35) in week 4. Colonisation with non-outbreak
34 and non-genotyped *S. pyogenes* strains was 1.7% (2/115); 3.9% (5/126); 5.6% (6/108); and 0/35 in the same weeks.
35 Genome sequencing showed clonality of isolates within each of six classes, confirming recent transmission accounted
36 for high carriage. When transmissibility was tested, children who were asymptomatic carriers of *emm4* and *emm3.93*
37 had positive cough plates on 1/14 (7.1%) and 7/21 (33.3%) occasions respectively. Only 1/60 surface swabs taken in
38 3 classrooms yielded the outbreak *S. pyogenes* strain. In contrast, 2/12 and 6/12 settle plates placed in elevated
39 locations yielded the outbreak *S. pyogenes* strain in the two classrooms tested.

40 **Interpretation:** *S. pyogenes* transmission in schools is intense and may occur prior to, or in spite of reported
41 treatment of cases, underlining a need for rapid case management. Despite guideline adherence, heavy shedding of
42 *S. pyogenes* by small numbers of classroom contacts may perpetuate outbreaks, and airborne transmission has a
43 plausible role in spread. The findings highlight the need for research to improve understanding and assess
44 effectiveness of interventions to reduce *S. pyogenes* airborne transmission.

45 **NOTE:** This preprint reports new research that has not been certified by peer review and should not be used to guide clinical practice.

47 **Introduction**

48

49 Since 2014, England has experienced rates of scarlet fever that are unprecedented in modern times (1, 2).
50 Scarlet fever is a highly communicable exanthem caused by *Streptococcus pyogenes* that predominantly
51 affects younger children. Over 30,000 cases were notified in 2018, the highest number since 1960, with an
52 age-specific incidence of 523 per 100,000 among 1-4 year olds in England and Wales (3). Infections have
53 long-been recognised to seed outbreaks in schools and nurseries, creating a significant public health
54 burden (2). Though benign if treated promptly, there is a 20-fold increased risk of invasive streptococcal
55 infection in households that include a recent case of scarlet fever (4). In 2016, a near 2-fold increase in
56 invasive disease notifications was accompanied by emergence of a new sublineage of *emm1 S. pyogenes*
57 (M1_{UK}) expressing increased amounts of scarlet fever toxin (5).

58

59 The literature highlights a role for fomite surfaces in propagation of *S. pyogenes* outbreaks (6,7). Guidance
60 for management of school/nursery outbreaks of scarlet fever emphasises the importance of maintaining
61 good hand hygiene, prompt antibiotic treatment of index cases, and exclusion from school until 24h after
62 antibiotic treatment has started (8). Escalation of interventions including daily cleaning of toys, utensils, and
63 frequent touch points is recommended if necessary, along with daily vacuuming of soft furnishings (8).

64

65 To understand why outbreaks might continue to occur despite following these interventions, we investigated
66 *S. pyogenes* transmission during the scarlet fever seasons of 2018 and 2019, focussing on educational
67 settings with two sequential notifications of scarlet fever. Our primary aim was to determine if existing
68 guidance that focuses on hygiene, alongside case exclusion, prevented transmission of *S. pyogenes* in the
69 classroom. Our secondary aim was to investigate modes of transmission, to inform future guidance and
70 provide insight into *S. pyogenes* outbreaks more generally.

71

72 **Methods**

73 *Study design and participants.* We conducted a prospective observational study in Greater London with
74 recruitment from March 1 to May 31 2018 (Year 1), and March 1 to May 31 2019 (Year 2).

75 Schools and nurseries from the Greater London area that were notified to local Health Protection teams
76 were invited to participate if they had two confirmed or probable scarlet fever cases aged 2-8 years from
77 the same class within ten days of each other, with the most recent case arising in the preceding 48h.
78 (Appendix p2 and p19). Routine public health advice was provided including advice that cases should be
79 excluded from school until the case had received at least 24h of antibiotic treatment (8). Based on a
80 pragmatic approach, the first location with 2 eligible cases that agreed to participate each month was
81 selected.

82

83 *Procedures*

84 Confirmed and probable cases in the affected class were invited to participate in daily sampling as soon as
85 possible after diagnosis and up to day 8 of treatment, followed by samples collected at weekly intervals for
86 3 more weeks, comprising throat swabs, hand swabs, and Columbia blood agar (CBA, Oxoid, Basingstoke,
87 UK) cough plates (appendix p19). Cases were visited at home during initial periods of school exclusion.

88

89 All household and classroom contacts of each case were invited to participate in weekly throat swab
90 sampling for 4 weeks, or a total of 4 occasions if the weekly cycle was interrupted by holidays. In Year 2,
91 classroom contacts were additionally asked to provide hand swabs and cough plates. To compare
92 prevalence of carriage during an outbreak with prevalence after an outbreak, the protocol also incorporated
93 a 'break' in the sampling schedule in Year 2 such that the 4th sampling visit occurred 2-3 months after the
94 3rd visit, with flexibility to adjust this period to remain within the school term. Any child with clinical pharyngitis
95 or scarlet fever was directed to their primary care physician for management; swab results were not reported
96 to participants or their physicians.

97

98 Routine advice on cleaning (8) was issued prior to environmental sampling. Environmental swabs were
99 obtained from 20 frequently-touched items including toys and equipment in each classroom in 2018 in week
00 1. In 2019, to sample classroom air, CBA settle plates were positioned in each of two classrooms at heights
01 of ~1.5-2m for 2-3h on a weekly basis (Appendix p19-20).

02

03 After overnight culture, DNA was extracted from any *S. pyogenes* identified and *emm* genotyping
04 performed, followed by genome sequencing, as detailed (Appendix p20). Genome sequences (Appendix
05 p9-13) were compared with *S. pyogenes* sequences from an earlier survey of isolates associated with
06 scarlet fever (9) (Appendix p14, p19-21); *emm1* and *emm4* lineages were assigned as reported (5, 10).
07 Genome sequencing data are available from European Nucleotide Archive using the reference
08 PRJEB43915. To evaluate sensitivity of conventional culture, DNA extracted from culture-negative swabs
09 from one setting was subject to *S. pyogenes* ProS PCR (Appendix p19).

10

11 The study protocol was approved by a Research Ethics Committee (reference 18/LO/0025; IRAS 225006).
12 Written informed consent was provided by parents or guardians, and assent provided by each child.

13

14 *Statistical analysis.* Descriptive statistics only were used to analyse the data.

15

16 **Role of Funding source.** The funders played no role in study design, data interpretation, writing the report
17 or decision to submit the paper for publication

18

19

20

21

22 Results

23

24 During the study, 156 educational outbreaks in London were reported in year 1 (2018), and 47 in year 2
25 (2019). Six settings were included, and 12 cases were recruited (Figure 1, Appendix, p3). Two cases were
26 recruited per setting in settings 1-3; setting 2 and 3 were different classes in the same school. Three cases
27 were recruited from each of settings 4 and 6. Cases declined to participate in setting 5, although contact
28 and environment testing was undertaken based on one confirmed and one probable case. Sampling was
29 completed by June 7th in year 1 and June 28th in year 2. During the study, participating schools reported
30 increased prevalence of pharyngitis in addition to the reported cases of scarlet fever. The median attack
31 rate for confirmed and probable cases was 5% (IQR 4.1-12.6%) and 10.1% (IQR 7.3-24.9%) with inclusion
32 of possible cases. (Appendix, p3)

33

34 Of the scarlet fever cases, 6/12 had been swabbed by primary care physicians prior to antibiotic treatment.
35 *S. pyogenes* genotypes associated with each outbreak were derived from the swabs obtained from these
36 cases, or inferred from the *S. pyogenes* isolates cultured from household contacts of cases. Genotypes
37 were *emm6*, *emm1*, *emm4*, and *emm3.93* (Figure 2). *Emm1* isolates all belonged to the newly described
38 M1_{UK} lineage (5), while *emm4* isolates all belonged to the M4-complete lineage (10).

39

40 All but one of the 12 cases received antibiotic treatment prescribed by the primary care physician. *S.*
41 *pyogenes* was not detected in swab samples obtained during the first week, in all cases where antibiotic
42 treatment had been initiated prior to the study visit (Table 1). The child who did not receive antibiotic
43 treatment remained throat swab positive up to and including week 2 but had cleared *emm4 S. pyogenes* by
44 week 3 (Table 1, appendix p4). One contact who had a positive throat swab and cough plate on day 1 of
45 week 1 with *emm3.93 S. pyogenes*, developed scarlet fever the same day, so was also recruited as a case.
46 Where the duration of antibiotic treatment was known (8/12 cases), 4 children completed a 10-day course,
47 and 4 took an incomplete course (including 2 cases where a 7-day course was prescribed). Of those who
48 had received antibiotic treatment, including those who completed a full 10-day course, the throat swab grew
49 the prevailing outbreak strain of *S. pyogenes* again in 4/11 cases (36.3%); by week 2 (one with *emm3.93*),
50 and by week 3 (two with M1_{UK} and one with *emm3.93*). One of the cases, carrying M1_{UK}, was also cough-
51 plate and hand-swab positive in week 3 despite previously testing negative. (Table 1 and Appendix p4).

52

53 Seventeen household contacts were enrolled in the study, representing 9 households (**Figure 1**). Of these,
54 3/17 (17.6%) had throat swabs that yielded *S. pyogenes*, two of whom had symptomatic pharyngitis with
55 M1_{UK} and both demonstrated carriage spanning 2 or 3 weeks. (Appendix p5)

56

57 Among all classroom contacts swabbed in schools (Figure 1), asymptomatic throat carriage of the
58 genomically-defined outbreak *S. pyogenes* strains among swabbed children rose from 11/115 (9.6%) in
59 week 1, to 34/126 (26.9%) in week 2, to 26/108 (24.1%) in week 3, then 5/35 (14.3%) in week 4. This fell

60 to 6/53 (11.3%), then 0/18 (0%) in classes where delayed swabbing was undertaken (Table 2). In contrast
61 to carriage of the outbreak strain, median carriage of non-outbreak *S. pyogenes* was 2.8% (IQR 0-6.61%)
62 during the study (Table 2). Transmission appeared particularly intense in setting 2, where 8/18 (44.4%) of
63 children swabbed were infected with the outbreak M1_{UK} strain in week 2, in addition to the two household
64 contacts (Figure 3, appendix p6). Overall, across all six settings, more than half of eligible children
65 participated in the study (median participation rate 52.5%, IQR 43.71-65.83%; appendix p6).

66
67 Whole genome sequencing was undertaken on all viable *S. pyogenes* isolates identified. Within each
68 setting, isolates of the same genotype were clonal, with individual strains being a median of 0 SNPs (range
69 0-5 SNPs) different to other strains in that setting, consistent with a common source of transmission, but a
70 median of 12 SNPs (range 4-55 SNPs) different from the closest strain of the same genotype sequenced
71 in 2014. Core genomes exhibited more similarity than expected. (Appendix p8, p15-18).

72
73 Environmental swabs taken in settings 1-3 in week 1 of the first year of the study yielded mixed bacterial
74 growth (~1 x 10² cfu – 1 x 10⁴ cfu per swab; appendix p7). *S. pyogenes* was identified from just one toy
75 (train track) from setting 2: Five colonies/swab of the outbreak strain *emm1* (M1_{UK}) were 1-3 SNPs different
76 to isolates obtained from children in the same class (appendix p16).

77
78 To determine the source of ongoing transmission in the classrooms, the protocol was amended in year 2 to
79 include hand-swabs and cough-plates from classroom contacts in addition to throat swabs, while settle
80 plates were used to sample air in the classroom. In setting 4, where *emm4* predominated, one of four
81 children carrying *S. pyogenes* was cough-plate positive in the second week, but not in subsequent weeks
82 (appendix p6); all isolates in this setting were 0 SNP apart (appendix p17). Cough-plates were negative in
83 setting 5 (also *emm4* where again isolates were 0 SNP apart; appendix p6, p17). Overall 1/14 (7.1%) *emm4*
84 positive throat swabs was associated with a positive cough plate. In setting 6, where *emm3.93* *S. pyogenes*
85 predominated, cough-plates were positive for the outbreak *emm3.93* strain in one third of children with
86 positive *emm3.93* throat swabs (week 1, 2/6; week 2, 3/9, week 3, 2/6) (Figure 3 and Appendix p6). The
87 vast majority of strains were 0 SNP different from one another, bar three strains that were 1, 2, and 5 SNP
88 apart (Appendix p18). SNPs differentiating strains within each outbreak are listed (Appendix p8).

89
90 In setting 4, where prevalence of the outbreak *emm4* *S. pyogenes* had been 0/18(0%), 4/20(20%), and
91 4/24(16.6%) in weeks 1- 3 respectively, final samples from classroom contacts were taken in week 16 after
92 an intentional break in sampling, and all (0/18) were negative. It was only possible to incorporate a 4-week
93 gap for settings 5 and 6 for logistic reasons related to the timing of the school term. In setting 5, carriage of
94 the outbreak *emm4* strain remained steady throughout the study, with a prevalence of 0% (0/17), 13.6%
95 (3/22), 13.6% (3/22) in weeks 1-3 respectively and 12.5% (3/23) at week 7. Notably 2/3 of *emm4* carriers
96 who were positive in week 7 had also been positive in week 3. In setting 6, where prevalence of the outbreak
97 *emm3.93* strain in weeks 1, 2, and 3 was 21.4% (6/28), 26.5% (9/34), 19.4% (6/31) (Figure 3) respectively

98 in asymptomatic classroom contacts, carriage of *emm3.93* fell to 10% (3/30) by week 8. Notably in this
99 outbreak, throat swabs from two of the cases and a single household contact were positive in week 3,
00 *emm3.93* (Appendix p4-5). To determine the likelihood that culture-based sampling might be insensitive,
01 DNA extracted from culture-negative swabs from setting 6 was subject to *S. pyogenes* ProS PCR; 50/65
02 (76.9%) culture negative swabs were deemed qPCR negative.

03
04 Four settle plates were used per classroom in settings 5 and 6 to sample room air, sited above child head
05 height. In setting 5, one of four settle plates (placed above a whiteboard) was positive for *emm4 S. pyogenes*
06 in each of weeks 2 and 3 of the study (Table 3). In setting 6, two of four settle plates were positive for
07 *emm3.93 S. pyogenes* in weeks 1, 2, and 3 of the study, including plates on top of 2m cupboards (Table
08 3). In both settings, *S. pyogenes* strains on settle plates were identical to strains identified in children
09 (*emm4* and *emm3.93*, appendix p17-18).

10
11

12 Discussion

13

14 This prospective contact tracing study of *S. pyogenes* transmission was undertaken in response to an
15 unprecedented rise in scarlet fever notifications in England. Using genome sequencing to confirm common
16 sources of transmission, we found a high prevalence of the outbreak strain among asymptomatic classroom
17 contacts, peaking in the second week of our investigations. Despite antibiotic treatment and isolation of
18 index cases for 24h after initiation of antibiotic treatment, and implementation of standard hygiene measures
19 within the classrooms, transmission within the class was observed. Enhanced sampling in year 2 revealed
20 evidence of prominent *S. pyogenes* shedding by some children, and airborne dispersal of genomically
21 identical strains in the classroom.

22

23 In the six settings investigated, *emm1* (M1_{UK}) strains were involved in two outbreaks, *emm4* in two
24 outbreaks, and *emm3.93* and *emm6* strains were involved in one outbreak each. New scarlet fever-causing
25 lineages have been associated with national upsurges in invasive *S. pyogenes* (5, 11), exemplified by
26 emergence of M1_{UK}, a lineage that expresses increased levels of the scarlet fever toxin SpeA (5). There are
27 however international differences in approach to treatment of streptococcal pharyngitis (12), and
28 transmission risks are not widely considered (13). Coupled with the public health impact of outbreaks (2),
29 high attack rates in schools (14), and increased risk of invasive infections (4), there is a rationale to limit the
30 spread of *S. pyogenes* in the population, particularly where lineages such as *emm1* and *emm3*, that are
31 independently associated with high case fatality or severe manifestations (15), are involved.

32

33 Current public health guidance on scarlet fever management focusses on treatment, exclusion, and hygiene
34 interventions, with escalation to include daily cleaning of surfaces (8). Although contamination of fomites
35 including toys is no doubt important, we found that transmission was ongoing despite such cleaning and in

36 the absence of frequent surface *S. pyogenes* contamination. Indeed, the main source of *S. pyogenes*
37 appeared to be the children themselves. Other than foodborne scarlet fever outbreaks (16), there are
38 remarkably few recent investigations that examine transmission routes. Four contemporary reports describe
39 scarlet fever outbreaks with high attack rates (23-72%) in educational settings that were not controlled by
40 standard interventions (17-20); transmission routes were investigated in just one (17). Three describe use
41 of antibiotic treatment to end the outbreaks, treating all colonised children (17-19). Microbiological detection
42 of *S. pyogenes* to enable treatment of children found to be colonised would however be challenging to
43 undertake routinely for all scarlet fever outbreaks. Our study underlines a need for research to evaluate a
44 potential role for molecular point of care tests for rapid detection of colonisation and outbreak management.

45
46 By week 3, prevalence of the genomically-confirmed outbreak strain was 14%-47% across all six settings,
47 while carriage of non-outbreak strains was infrequent. Carriage rates detected are remarkably similar to
48 data from higher attack rate outbreaks (17-20) and studies from the pre-antibiotic era, where 26-33% of
49 streptococcal pharyngitis classroom contacts were observed to carry the outbreak serotype (21). Our study
50 draws attention to the importance of context when measuring *S. pyogenes* carriage rates as, outside of the
51 springtime outbreak season, asymptomatic carriage in healthy children in England is estimated at <6% (22)
52 and <1% in healthy adults (23). Studies that report average annual rates of asymptomatic carriage therefore
53 fail to recognise the very major impact of seasonal variation and outbreaks and may provide misleading
54 contextual information when providing recommendations.

55
56 We frequently recovered the outbreak strain among classroom contacts in week 1 of sampling, indicating
57 that transmission had already occurred in the classroom, whether from one of the index cases of scarlet
58 fever or another unknown source. It is possible that treatment may have been delayed in some cases; a
59 recent study identified one fifth of scarlet fever cases to be initially diagnosed as a viral infection, allowing
60 transmission to continue if the affected child remains in school, untreated (24). Whether this is sufficient to
61 explain scarlet fever outbreaks merits further analysis and modelling.

62
63 It is generally believed that asymptomatic carriage is unlikely to lead to transmission, although the term
64 'carrier' is more often used to refer to a case that has been treated for *S. pyogenes* pharyngitis but
65 demonstrates microbiological failure (25). In our study, the systematic increase in prevalence of outbreak
66 strains between weeks 1 and 2 in classroom contacts pointed to ongoing transmission from asymptomatic
67 carriers, despite index cases having been excluded and treated. Indeed, after returning to school, four
68 cases re-acquired the outbreak strain by week 3, presumably through contact with other colonised contacts
69 or classroom air, although did not develop symptomatic illness; these cases re-acquired *emm1* (M1_{UK}, 2
70 cases) and *emm3.93* (2 cases). Our investigations using cough plates and hand swabs demonstrated that
71 at least one third of asymptomatic *emm3.93* carriers were shedding more *S. pyogenes* than other children
72 in exhaled cough and on hands. These findings raise a question about the definition of colonisation and
73 infection in young children, who may not be able to identify their symptoms, or may be infectious without

74 symptoms. The study confirms the existence of so-called heavy shedders among those who are apparently
75 asymptomatic at the time of sampling and resonates with historic reports of heavy nasal shedding by *S.*
76 *pyogenes* nasal carriers (26).

77

78 Settle plates placed in elevated locations for just 2-3 hours, provided evidence of *S. pyogenes* dispersal in
79 classroom air in settings 5 and 6; the timing of settle plate positivity coincided with more intense periods of
80 asymptomatic shedding. Settle plates provide an easy read out in an outbreak setting and could be used
81 to indicate a need for improved ventilation, social distancing, or surveillance for heavy shedders. Airborne
82 spread of scarlet fever-causing streptococci was previously recognised as a threat in hospitals in the 1930's
83 (27) and in military barracks in the 1940's (28). Contemporary outbreaks of *S. pyogenes* that are not
84 explained by direct contact alone suggest a need to take not only indirect contact but also airborne
85 transmission into consideration when developing guidelines.

86

87 The scarlet fever outbreak setting has provided an unexpected model for understanding *S. pyogenes*
88 transmission and immunity. Children of the same age were exposed to a presumed similar inoculum of *S.*
89 *pyogenes* in class, yet only ~5% developed scarlet fever, some of whom re-acquired the outbreak strain
90 without illness three weeks later, while some anecdotally developed pharyngitis. Others were found to
91 asymptotically shed *S. pyogenes* for several weeks, while others showed transient colonisation, or no
92 infection whatsoever. Our understanding of immunity to *S. pyogenes* is heavily dominated by factors that
93 influence susceptibility to invasive disease. The findings highlight a gap in our knowledge regarding mucosal
94 immunity to *S. pyogenes*, specifically whether full immunity requires antibodies to prevent streptococcal
95 adherence, promote bacterial clearance, and inhibit streptococcal virulence factors during pharyngitis. This
96 is potentially critical to vaccine development. Coupled with differences in genetic susceptibility and oral
97 microbiota, differing layers of immunity could go some way to explain why children express a range of
98 disease phenotypes.

99

00 There are limitations to our study. Sampling of fomites was limited to single timepoints in year 1, while settle
01 plates to sample air were only used in year 2, restricting ability to determine the relative importance of each
02 transmission route. Our study was based in London, so findings may not be relevant to rural, or low- and
03 middle-income settings, or regions with different climate. Furthermore, transmission intensity may be
04 seasonal; we attempted to sample outside of the main scarlet fever season, but schools were unwilling to
05 participate. Indeed, engagement was high when anxiety about scarlet fever was greatest.

06

07 The study has demonstrated that heavy asymptomatic shedding by a proportion of children may account
08 for persistence of *S. pyogenes* outbreaks in classroom settings. The phenomenon of super-shedders and
09 super-spreaders is increasingly recognised as a source of heterogeneity in infectious disease modelling
10 (29, 30) and is consistent with the explosive nature of some streptococcal outbreaks. Relevance to other
11 respiratory infections is unclear. Our findings may explain the periodic failure of interventions focussed on

12 hygiene alone to curtail outbreaks of *S. pyogenes*, both in the classroom and other institutional settings.
13 The recognition of heavy asymptomatic shedding highlights a potential role for social distancing, improved
14 respiratory hygiene, and better ventilation in reducing *S. pyogenes* transmission during outbreaks. As an
15 unforeseen consequence of the COVID-19 pandemic, implementation of these measures has proven highly
16 successful in halting England's scarlet fever upsurge, at least in 2020 (31), highlighting a need for better
17 understanding of transmission routes in preventing future upsurges.

18
19 **Declaration of interests.** The authors declare no competing interests

20 21 **Funding**

22 Action Medical Research (GN2596); UKRI, Medical Research Council (MR/P022669/1); NIHR Health
23 Protection Research Unit in Healthcare-associated Infection and AMR; NIHR Imperial College Biomedical
24 Research Centre (BRC).

25
26 **Acknowledgements** The authors would like to acknowledge the support of the schools, nurseries, and
27 staff, as well as the many children and households who participated in this study, and the support of London
28 Health Protection Teams in PHE. The NIHR BRC Colebrook laboratory and BRC Genomics facility are also
29 acknowledged. EJ is a Rosetrees/Stoneygate 2017 Imperial College Research Fellow, funded by Rosetrees
30 Trust and the Stoneygate Trust (Fellowship no. M683).

31 32 **Author contributions**

33 Conceptualisation and funding acquisition SS, RC, TL; Project supervision and methodology SS;
34 Recruitment supervision RC; data collection LB, AKP, MM, EM, MKS, RCYL, DR, PH; data analysis AV,
35 EJ; data visualisation RC, SS, AV, EJ; LB, AKP, and RC verified the identifiable participant data; EM, EJ,
36 and AV verified linked non-identifiable microbiological and genomic data.
37 Original draft RC, SS; Review and editing AKP, EJ, AV, PH, DR, RCYL, TL; Final manuscript all authors.
38 All authors had full access to all non-identifiable data in the study and agreed with the decision to submit
39 for publication.

40
41 **Data sharing.** All data are included in the supplementary materials or are available from European
42 Nucleotide Archive using the reference PRJEB43915.

46 References

47

- 48 1. Guy R, Williams C, Irvine N, et al. Increase in scarlet fever notifications in the United Kingdom,
49 2013/2014. Euro Surveill. 2014 Mar 27;19(12):20749. doi: 10.2807/1560-7917.es2014.19.12.20749.
50 PMID: 24698137.
- 51 2. Lamagni T, Guy R, Chand M, et al. Resurgence of scarlet fever in England, 2014-16: a population-
52 based surveillance. Lancet. Infectious Diseases, 27 Nov 2017, 18(2):180-187. DOI: 10.1016/s1473-
53 3099(17)30693-x. PMID: 29191628
- 54 3. Public Health England, Group A streptococcal infections: first report of seasonal activity, 2018/19
55 Health Protection Report Volume 13 Number 8. Advanced Access report
56 [https://assets.publishing.service.gov.uk/government/uploads/system/uploads/attachment_data/file/
57 782182/hpr0819_sf-gas.pdf](https://assets.publishing.service.gov.uk/government/uploads/system/uploads/attachment_data/file/782182/hpr0819_sf-gas.pdf). Accessed June 28 2021.
- 58 4. Watts V, Balasegaram S, Brown CS, et al. Increased Risk for Invasive Group A *Streptococcus*
59 Disease for Household Contacts of Scarlet Fever Cases, England, 2011-2016. Emerg Infect Dis.
60 2019 Mar;25(3):529-537. doi: 10.3201/eid2503.181518. Epub 2019 Mar 17. PMID: 30602121
- 61 5. Lynskey NN, Jauneikaite E, Li HK, et al. Emergence of dominant toxigenic M1T1 *Streptococcus*
62 *pyogenes* clone during increased scarlet fever activity in England: a population-based molecular
63 epidemiological study. Lancet Infect Dis. 2019 Nov;19(11):1209-1218. doi: 10.1016/S1473-
64 3099(19)30446-3. Epub 2019 Sep 10. PMID: 31519541.
- 65 6. Wagenvoort JH, Penders RJ, Davies BI, Lütticken R. Similar environmental survival patterns of
66 *Streptococcus pyogenes* strains of different epidemiologic backgrounds and clinical severity.
67 European Journal of Clinical Microbiology & Infectious Diseases: Official Publication of the European
68 Society of Clinical Microbiology. 2005 Jan;24(1):65-67. DOI: 10.1007/s10096-004-1256-8.
- 69 7. Kramer A, Schwebke I, Kampf G. How long do nosocomial pathogens persist on inanimate surfaces?
70 A systematic review. BMC Infect Dis. 2006 Aug 16;6:130. doi: 10.1186/1471-2334-6-130. PMID:
71 16914034; PMCID: PMC1564025.
- 72 8. Public Health England, Guidelines for the public health management of scarlet fever outbreaks in
73 schools, nurseries and other childcare settings October 2017.
74 [https://assets.publishing.service.gov.uk/government/uploads/system/uploads/attachment_data/file/
75 771139/Guidelines_for_the_public_health_management_of_scarlet_fever_outbreaks_.pdf](https://assets.publishing.service.gov.uk/government/uploads/system/uploads/attachment_data/file/771139/Guidelines_for_the_public_health_management_of_scarlet_fever_outbreaks_.pdf).
76 Accessed June 28 2021.
- 77 9. Chalker V, Jironkin A, Coelho J, et al. Scarlet Fever Incident Management Team. Genome analysis
78 following a national increase in Scarlet Fever in England 2014. BMC Genomics. 2017 Mar
79 10;18(1):224. doi: 10.1186/s12864-017-3603-z. PMID: 28283023; PMCID: PMC5345146
- 80 10. Remington A, Haywood S, Edgar J, Green LR, de Silva T, Turner CE. Cryptic prophages within
81 a *Streptococcus pyogenes* genotype *emm4* lineage. Microb Genom. 2021 Jan;7(1). doi:
82 10.1099/mgen.0.000482. Epub 2020 Nov 27. PMID: 33245690.

- 83 11. Al-Shahib A, Underwood A, Afshar B, et al. Emergence of a novel lineage containing a prophage
84 in *emm*/M3 group A *Streptococcus* associated with upsurge in invasive disease in the UK [published
85 correction appears in *Microb Genom.* 2016 Nov 30;2(11):e000097]. *Microb Genom.*
86 2016;2(6):e000059. Published 2016 Jun 24. doi:10.1099/mgen.0.000059
- 87 12. Matthys J, De Meyere M, van Driel ML, De Sutter A. Differences among international pharyngitis
88 guidelines: not just academic. *Ann Fam Med.* 2007 Sep-Oct;5(5):436-43. doi: 10.1370/afm.741.
89 PMID: 17893386; PMCID: PMC2000301.
- 90 13. National Institute for Clinical Excellence (NICE) Respiratory tract infections –antibiotic prescribing.
91 Prescribing of antibiotics for self-limiting respiratory tract infections in adults and children in primary
92 care 2008. <https://www.nice.org.uk/guidance/cg69/evidence/full-guideline-pdf-196853293>.
93 Accessed June 28 2021.
- 94 14. Ryu S, Chun BC. Investigation of Scarlet fever outbreak in a Kindergarten, *Infect Chemother*, 2018
95 Mar;50(1):38-42 doi: 10.3947/ic.2018.50.1.38
- 96 15. Nelson GE, Pondo T, Toews KA, et al. Epidemiology of Invasive Group A Streptococcal Infections in
97 the United States, 2005-2012. *Clin Infect Dis.* 2016 Aug 15;63(4):478-86. doi: 10.1093/cid/ciw248.
98 Epub 2016 Apr 22. PMID: 27105747; PMCID: PMC5776658.
- 99 16. Yang SG, Dong HJ, Li FR, et al. Report and analysis of a scarlet fever outbreak among adults through
00 food-borne transmission in China. *J Infect.* 2007 Nov;55(5):419-24. doi: 10.1016/j.jinf.2007.07.011.
01 Epub 2007 Aug 27. PMID: 17719644
- 02 17. Falck G, Kjellander J. Outbreak of group A streptococcal infection in a day-care center. *Pediatr Infect*
03 *Dis J.* 1992 Nov;11(11):914-9. doi: 10.1097/00006454-199211110-00002. PMID: 1454431.
- 04 18. Feeney KT, Dowse GK, Keil AD, Mackaay C, McLellan D. Epidemiological features and control of an
05 outbreak of scarlet fever in a Perth primary school. *Commun Dis Intell Q Rep.* 2005;29(4):386-90.
06 PMID: 16465930.
- 07 19. Hoebe CJ, Wagenvoort JH, Schellekens JF. Een epidemie van roodvonk, impetigo en faryngitis
08 veroorzaakt door dezelfde *Streptococcus pyogenes* type T4M4 op een basisschool [An outbreak of
09 scarlet fever, impetigo and pharyngitis caused by the same *Streptococcus pyogenes* type T4M4 in a
10 primary school]. *Ned Tijdschr Geneeskd.* 2000 Nov 4;144(45):2148-52. Dutch. PMID: 11086489.
- 11 20. Lamden KH. An outbreak of scarlet fever in a primary school. *Arch Dis Child.* 2011 Apr;96(4):394-7.
12 doi: 10.1136/adc.2010.189944. Epub 2010 Nov 10. PMID: 21068078.
- 13 21. Glover JA, Griffith F. Acute tonsillitis and some of its sequels: epidemiological and bacteriological
14 observations. *Br Med J.* 1931;2(3689):521-527. doi:10.1136/bmj.2.3689.521
- 15 22. Spitzer J, Hennessy E, Neville L. High group A streptococcal carriage in the Orthodox Jewish
16 community of north Hackney. *Br J Gen Pract.* 2001 Feb;51(463):101-5. PMID: 11217620; PMCID:
17 PMC1313922.

- 18 23. Pearson M, Fallowfield JL, Davey T, et al. Asymptomatic group A Streptococcal throat carriage in
19 Royal Marines recruits and Young Officers. J Infect. 2017 Jun;74(6):585-589. doi:
20 10.1016/j.jinf.2017.03.001. Epub 2017 Mar 23. PMID: 28344116
- 21 24. Herdman MT, Cordery R, Karo B, et al. Clinical management and impact of scarlet fever in the
22 modern era: findings from a cross-sectional study of cases in London, 2018-2019. MedRxiv,
23 <https://www.medrxiv.org/content/10.1101/2021.06.25.21259535v1.full.pdf>
- 24 25. DeMuri GP, Wald ER. The Group A Streptococcal Carrier State Reviewed: Still an Enigma. J
25 Pediatric Infect Dis Soc. 2014 Dec;3(4):336-42. doi: 10.1093/jpids/piu030. Epub 2014 Apr 30. PMID:
26 26625454.
- 27 26. Hamburger, M., Jr., and Green, M. J. 1946, The problem of the dangerous carrier of hemolytic
28 streptococci. IV. Observations upon the role of the hands, of blowing nose, of sneezing and of
29 coughing in the dispersal of these microorganisms. J. Inf. Dis. 79: 33-44
- 30 27. Brown WA, Allison VD. Infection of the air of scarlet-fever wards with *Streptococcus pyogenes*. J Hyg
31 (Lond). 1937 Jan;37(1):1-13. doi: 10.1017/s0022172400034768. PMID: 20475359; PMCID:
32 PMC2199405.
- 33 28. Loosli, C. G., Lemon, H. M., Wise, H., and Robertson, O. H. 1948, Studies on the transmission and
34 control of respiratory disease within Army barracks: I. Hemolytic streptococcal environmental
35 reservoirs and their relation to the nose and throat flora of military personnel. J. Inf. Dis. 82: 59-71
- 36 29. Woolhouse M. Quantifying Transmission. Microbiol Spectr. 2017 Jul;5(4). doi:
37 10.1128/microbiolspec.MTBP-0005-2016. PMID: 28812540
- 38 30. Adam DC, Wu P, Wong JY, et al. Clustering and superspreading potential of SARS-CoV-2 infections
39 in Hong Kong. Nat Med. 2020 Nov;26(11):1714-1719. doi: 10.1038/s41591-020-1092-0. Epub 2020
40 Sep 17. PMID: 32943787.
- 41 31. Public Health England, Group A streptococcal infections: second report on seasonal activity in
42 England, 2019/20 Health Protection Report Volume 14 Number 10.
43 [https://assets.publishing.service.gov.uk/government/uploads/system/uploads/attachment_data/file/
44 887272/hpr1020_GAS-SF.pdf](https://assets.publishing.service.gov.uk/government/uploads/system/uploads/attachment_data/file/887272/hpr1020_GAS-SF.pdf). Accessed June 28 2021.

56
57
58

Table 1. *S. pyogenes* carriage and shedding in twelve cases of scarlet fever after recruitment to study

Positive swabs	Pre-study [#]	Week 1 [†]			Week 2	Week 3	Week 4	Week 7-8	Week 16
		Day 1	Day 2	Day 3					
Antibiotic [§]	10/12	10/12	11/12	11/12	9/12	0/12	0/12	0/12	0/12
Throat positive	5/6	2/12	1/6	1/5	2/11	4/10	0/5	1/3	1/3
Cough positive	-	1/12	0/6	0/5	0/11	1/10	0/5	-	-
Hand positive	-	0/12	0/6	0/5	0/11	1/10	0/5	-	-

59

[#]Only 6 cases were swabbed by primary care physician pre-study.

60

[†]Children were swabbed daily in week 1, until at least 72 h antibiotic therapy was given. Day 1 indicates first day of study and first swab.

61

62

[§]One case was identified in a contact at start of study so started antibiotics after first swab. One case received no antibiotics.

63

64

Final week of swabbing was week 4 (5 cases); week 7 (3 cases) or week 16 (3 cases).

65

66

67

68

69

70

Table 2. *S. pyogenes* outbreak strain throat swab prevalence in classroom contacts

<i>S. pyogenes</i> swabs	Number of children (number with outbreak strain confirmed by WGS)					
	Week 1	Week 2	Week 3	Week 4	Week 7/8	Week 16
Setting 1	Emm6					
Swabs taken	16	13	15	15		
Positive (emm6)	3 (3)	4 (4)	7 (7)	3 (3)		
Outbreak strain %	18.75	30.7	46.7	20		
Setting 2	Emm1 (M1_{UK})					
Swabs taken	17	18	16	Hol		
Positive (emm1)	0	10 (8)	8 (6)	Hol		
Outbreak strain %	0	44.4	37.5	Hol		
Setting 3	Emm1 (M1_{UK})					
Swabs taken	19	19	Hol	20		
Positive (emm1)	2 (2)	6 (6)	Hol	2 (2)		
Outbreak strain %	10.5	31.6	Hol	10		
Setting 4	Emm4					
Swabs taken	18	20	24			18
Positive (emm4)	1 (0)	4 (4)	4 (4)			0
Outbreak strain %	0	20	16.7			0
Setting 5	Emm4					
Swabs taken	17	22	22		23	
Positive (emm 4)	0	3 (3)	4 (3)		5 (3)	
Outbreak strain %	0	13.6	13.6		13	
Setting 6	Emm3.93					
Swabs taken	28	34	31		30	
Positive (emm3.93)	7 (6)	12 (9)	9 (6)		5 (3)	
Outbreak strain %	21.4	26.5	19.4		10	
Total swabs taken	115	126	108	35	53	18
Non-outbreak or unconfirmed strains	2	5	6	0	4	0
% non-outbreak or unconfirmed strain +ve	1.7	3.9	5.6	0	7.5	0
Outbreak strains	11	34	26	5	6	0
% outbreak strain +ve	9.6	26.9	24.1	14.3	11.3	0

Hol, holiday. Hatched boxes, intentional pause in study. Final week of sampling was deferred to week 7 or week 16 for settings 4-6 (year 2). Detailed results in Supplementary table 3

75
76
77

Table 3. Air settle plate results from settings 5 and 6.

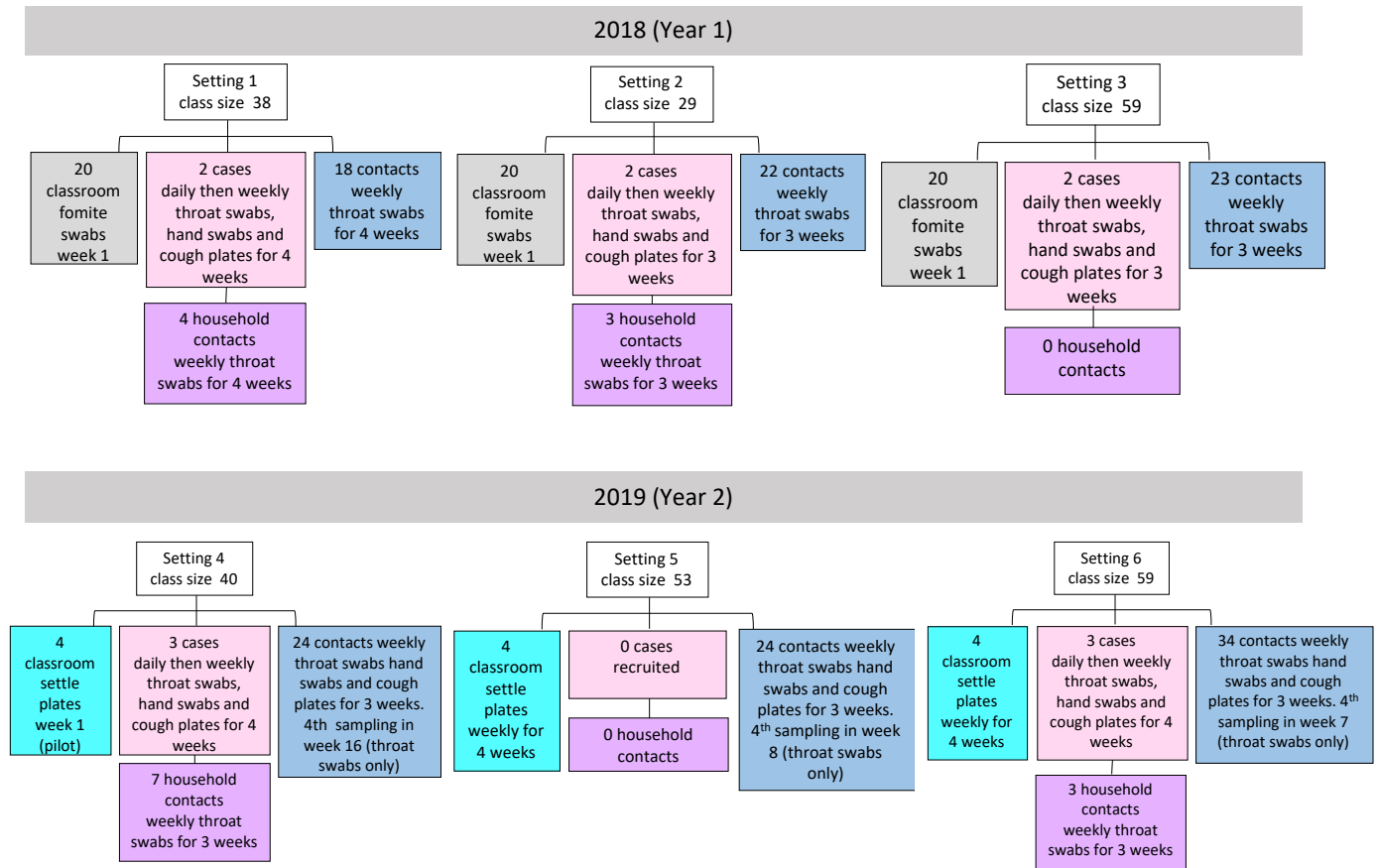
Setting	Location	Height	Week 1	Week 2	Week 3	Week 7/8
Setting 5 (emm4)	Shelf	1.5m	Neg	Neg	Neg	Neg
	Shelf	1.5m	Neg	Neg	Neg	Neg
	Shelf	1.5m	Neg	Neg	Neg	Neg
	Whiteboard top	1.5m	Neg	Emm 4	Emm 4	Neg
Setting 6 (emm3.93)	Cupboard top	2m	Emm3.93	Emm3.93	Emm3.93	Neg
	Shelf	2m	Neg	Neg	Neg	Neg
	Shelf	2m	Emm3.93	Neg	Neg	Neg
	Cupboard top	2m	Neg	Emm3.93	Emm3.93	Neg

78

79
80
81
82
83

Figure 1

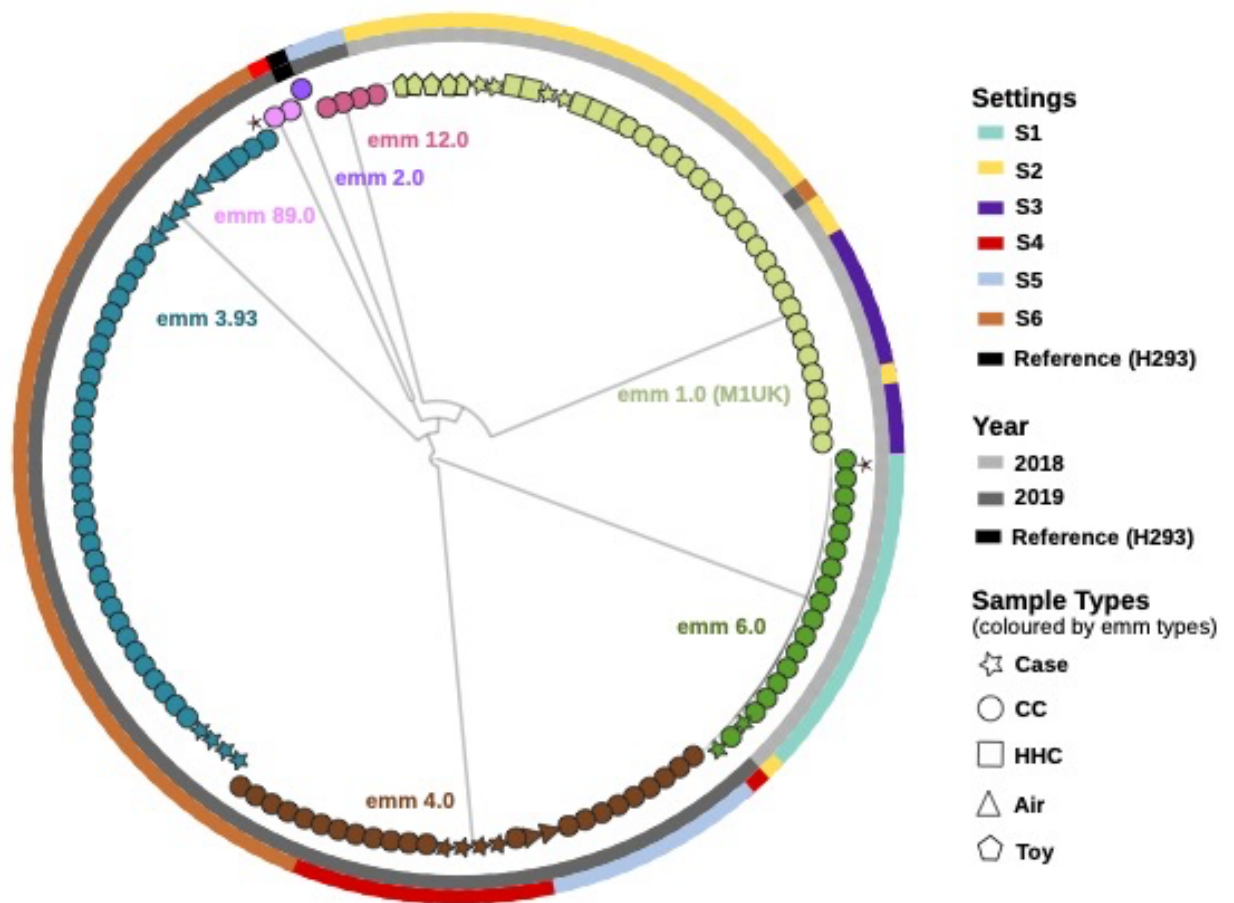
Flowchart indicating sample types sought from participants and schools in each setting. Samples provided, timings, and any breaks in sampling schedule are listed in Appendix pages 4-6.



84

85 **Figure 2. Phylogenetic relationship between *S. pyogenes* isolates sequenced from cases, contacts and**
86 **environment in each of six settings.** Maximum likelihood phylogenetic tree constructed from 20,229 core SNPs
87 (without recombination regions) extracted after mapping 136 *S. pyogenes* isolates to the reference sequence H293
88 (*emm89*, HG316453.2). The outer rings (from outermost to innermost) represent the settings (S1-S6), and the year of
89 collection. The tree was drawn in a circular layout with tips coloured based on *emm* types. The shape of the tip
90 indicates the source (sample type) of individual isolates: Case; Classroom contact (CC); household contact (HHC);
91 and environmental samples from settle plate (Air); or fomite (Toy). In some cases and contacts, multiple isolates were
92 detected per participant (Appendix pages 4-6 and 9-13). Uncommon strain subtypes (*emm3.143* and *emm6.9*) within
93 an *emm*- type are indicated by *. For detailed analysis of each setting, see supplementary figures.

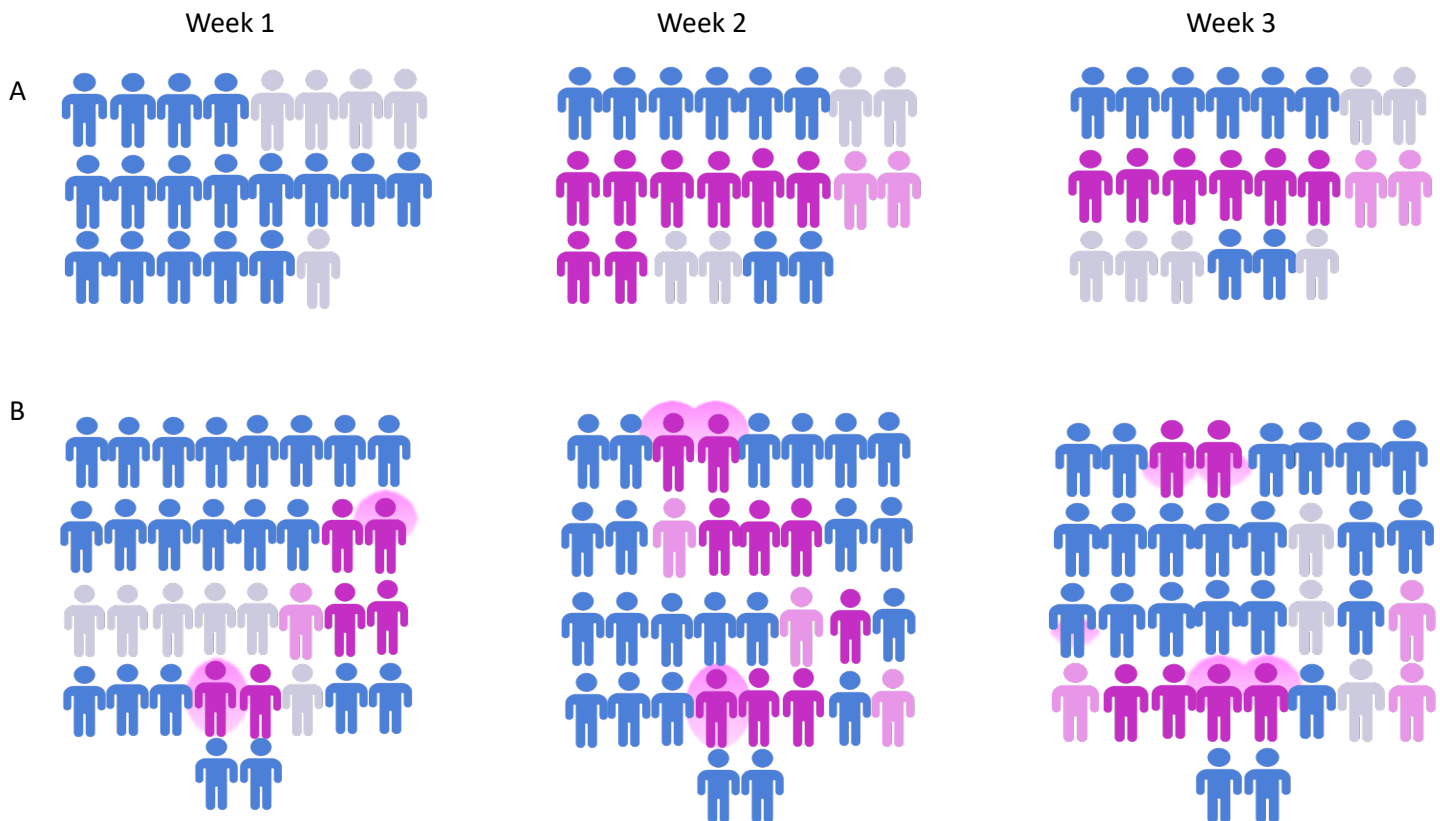
94
95
96
97



98

99 **Figure 3 Acquisition of M1_{UK} and emm3.93 *S. pyogenes* by classroom contacts.** Classroom contacts in (A) setting
00 2 and (B) Setting 6. Classroom contacts had throat swabs weekly for at least three weeks after identification of case;
01 each icon represents an individual child, grouped by week of swabbing. Colour of icons (adioma.com) indicates throat
02 swab result: Blue, negative; dark pink, outbreak strain *S. pyogenes*; pale pink, non-outbreak strain or genotype not
03 confirmed; grey, participant not swabbed in that week. Pink glow behind icon indicates cough plate and/or hand swab
04 positive. For (A) (n=22 classroom contacts) *S. pyogenes* was identified in 10/18 (55.5%) and 8/16 (50.0%) in weeks 2
05 and 3 respectively. The outbreak strain (*emm1/M1_{UK}*) was identified in 8/18 (44.4%) and 6/16 (37.5%) in weeks 2
06 and 3. For (B) (n=34 classroom contacts) *S. pyogenes* was identified in 7/28 (25.0%), 12/34 (35.2%), and 9/30 (30.0%) in
07 weeks 1, 2, and 3 respectively. The outbreak strain *emm3.93* was identified in 6/28 (21.4%), 9/34 (26.5%), and 6/30
08 (20.0%) of children who had swabs taken in weeks 1, 2, and 3 respectively. Fourth week not shown.

09
10
11
12
13



14