

1 ORIGINAL RESEARCH

2 Monterde et al

3 **Comorbidity accounts for severe COVID-19 risk, but how**
4 **do we measure it? Retrospective assessment of the**
5 **performance of three measures of comorbidity using**
6 **4,607 hospitalizations**

7 David Monterde,^{1,2} Gerard Carot-Sans,^{2,3} Miguel Cainzos-Achirica,^{4,5} Sònia Abilleira,⁶ Marc
8 Coca,^{2,3} Emili Vela,^{2,3} Montse Clèries,^{2,3} Damià Valero,^{2,3} Josep Comin-Colet,^{7,8,9} Luis Garcia-
9 Eroles,^{2,3} Pol Perez Sust,³ Miquel Arrufat,¹ Yolanda Lejardi,¹ and Jordi Piera^{2,3,10}

10

11 ¹Catalan Institute of Health, Barcelona, Spain.

12 ²Digitalization for the Sustainability of the Healthcare System (DS3), Sistema de Salut de
13 Catalunya, Barcelona, Spain.

14 ³Servei Català de la Salut, Barcelona, Spain.

15 ⁴Center for Outcomes Research, Houston Methodist, Houston, TX

16 ⁵Johns Hopkins Ciccarone Center for the Prevention of Cardiovascular Disease, Johns
17 Hopkins Medical Institutions, Baltimore, MD, USA

18 ⁶CIBER Epidemiología y Salud Pública (CIBERESP), Barcelona, Spain.

19 ⁷Department of Cardiology, Hospital Universitari de Bellvitge, L'Hospitalet de Llobregat,
20 Spain.

21 ⁸BIOHEART-Cardiovascular diseases research group (IDIBELL), L'Hospitalet de Llobregat,
22 Spain.

23 ⁹Department of Clinical Sciences, School of Medicine, Universitat de Barcelona - UB,
24 L'Hospitalet de Llobregat, Spain.

25 ¹⁰Open Evidence Research Group, Universitat Oberta de Catalunya, Barcelona, Spain

26

27

28 **Correspondence:**

29 Jordi Piera-Jiménez

30 Servei Català de la Salut (CatSalut)

31 Travessera de les Corts, 131-159 (Edifici Olímpia)

32 08028 Barcelona (Spain)

33 Tel: +34 634283110

34 Email: jpiera@catsalut.cat

35

36 **Abstract:**

37 **Background:** Comorbidity burden has been identified as a relevant predictor of critical
38 illness in patients hospitalized with coronavirus disease 2019 (COVID-19). However, comorbidity
39 burden is often represented by a simple count of few conditions that may not fully capture
40 patients' complexity.

41 **Purpose:** To evaluate the performance of a comprehensive index of the comorbidity
42 burden (Queralt DxS), which includes all chronic conditions present on admission, as an
43 adjustment variable in models for predicting critical illness in hospitalized COVID-19 patients and
44 compare it with two broadly used measures of comorbidity.

45 **Patients and methods:** We analyzed data from all COVID-19 hospitalizations reported in
46 eight public hospitals of Catalonia (North-East Spain) between June 15 and December 8 2020.
47 The primary outcome was a composite of critical illness that included the need for invasive
48 mechanical ventilation, transfer to ICU, or in-hospital death. Predictors included age, sex, and
49 comorbidities present on admission measured using three indices: the Charlson index, the
50 Elixhauser index, and the Queralt DxS index for comorbidities on admission. The performance of
51 different fitted models was compared using various indicators, including the area under the
52 receiving operating characteristics curve (AUC).

53 **Results:** Our analysis included 4,607 hospitalized COVID-19 patients. Of them, 1,315
54 experienced critical illness. Comorbidities significantly contributed to predicting the outcome in all
55 summary indices used. The AUC for prediction of critical illness was 0.641 (95% CI 0.624-0.660)
56 for the Charlson index, 0.665 (0.645-0.681) for the Elixhauser index, and 0.787 (0.773-0.801) for
57 Queralt DxS. Other metrics of model performance also showed Queralt DxS being consistently
58 superior to the other indices.

59 **Conclusion:** In our analysis, the ability of comorbidity indices to predict hospital outcomes
60 in hospitalized COVID-19 patients increased with their exhaustivity. The comprehensive Queralt

61 DxS index may improve the accuracy of predictive models for resource allocation and clinical
62 decision-making in the hospital setting.

63

64 **Keywords:** Comorbidity; Multimorbidity; COVID-19; Hospitalization; Risk

65

66 Introduction

67 During 2020, the rapid spread of the severe acute respiratory syndrome coronavirus 2
68 (SARS-CoV-2) and the severity of coronavirus disease 2019 (COVID-19) led to the collapse of
69 many healthcare systems worldwide, particularly hospital and intensive care unit (ICU) resources.
70 Recently approved vaccines against SARS-CoV-2 infection are expected to ease hospital
71 resources pressure.¹ Nevertheless, in many settings, COVID-19 continues to cause high hospital
72 demand, which requires adequate healthcare provision planning, particularly in scenarios of a
73 shortage of resources or overburdening of hospital resources.

74 Early in the pandemic, underlying comorbidities were pointed to as significant prognostic
75 factors for the development of severe illness. Initial analyses of large series of COVID-19 patients
76 revealed that hospitalized patients with chronic conditions like diabetes, hypertension, chronic
77 obstructive pulmonary disease, or cardiovascular diseases were more likely to develop severe
78 COVID-19, with no consensus regarding the contribution of each comorbidity to explaining
79 differences in COVID-19 outcomes.²⁻⁵

80 To date, various groups have proposed multivariate models for predicting hospital
81 outcomes in COVID-19 patients. This includes a broad range of analytical approaches that
82 typically rely on vital signs, laboratory results, comorbidities on admission, and—less
83 frequently—results of imaging techniques.⁶ Some of them aimed to assess patients' risk at the
84 time of hospital admission using measures of comorbidity burden, typically based on either
85 unweighted counts of comorbidities or the presence of specific diagnoses from a short (i.e., up to
86 12) list of chronic conditions.⁷⁻¹⁴ However, this parsimonious approach may not fully capture
87 patient complexity and the prognostic relevance of other conditions. Alternatively, comorbidity
88 indices (e.g., the Charlson Comorbidity Index¹⁵ and the Elixhauser index¹⁶) combine information
89 about several comorbidities into a single score.^{17,18} This yields more complex models with a more
90 challenging interpretation; however, it allows adjusting for multiple factors, likely improving model
91 accuracy.¹⁸

92 In 2020, we developed a comprehensive risk index tool for hospitalized patients, the
93 Queralt Index, which includes a measure of pre-existing comorbidities (Queralt DxS).¹⁹ The
94 Queralt DxS combines and weighs more than 2,100 relevant acute and chronic diagnostic codes.
95 Queralt DxS has shown optimal performance for risk adjustment when measuring comorbidity
96 burden in hospitalized patients.¹⁹ In this study, we assessed the performance of Queralt DxS as a
97 comorbidity measure in models for predicting outcomes in hospitalized COVID-19 patients and
98 compared it with other widely used comorbidity measures: the Charlson and Elixhauser indices.

99

100 **Material and methods**

101 ***Data sources***

102 Data were retrospectively retrieved from hospital administrative databases of Catalonia, a
103 North-East region in Spain with 7.5 million inhabitants. The dataset included admissions to the
104 eight hospitals of the Catalan Institute of Health (ICS), which provide universal health care to
105 nearly 70% of the Catalan population, and account for approximately 30% of all hospitalizations
106 reported in Catalonia. ICS hospitals systematically collect and store data on diagnostics and
107 resource utilization into a centralized database. To prevent biases associated with the
108 unprecedented hospital overburdening experienced in Spain during the first wave of the COVID-
109 19 outbreak,^{20,21} the primary analysis was restricted to admissions occurred from June 15 to
110 December 8, 2020. The database was locked on March 30, 2021.

111 Hospital admissions due to COVID-19 were identified according to the following codes of
112 the International Classification of Diseases, 10th Revision, Clinical Modification (ICD-10-CM)
113 system: B97.29, B97.21, B34.2, J12.81, J12.89, and the recently added code for lab-confirmed
114 COVID-19 U07.1. We included all hospital admissions of patients who either died in the hospital
115 or were discharged home. Records from patients transferred from or discharged to other

116 hospitals were excluded from the analysis to ensure the completeness of clinical data during the
117 full index hospitalization.

118 All data were handled according to the General Data Protection Regulation 2016/679 on
119 data protection and privacy for all individuals within the European Union and the local regulatory
120 framework regarding data protection. The independent ethics committee of the Bellvitge
121 Biomedical Research Institute (IDIBELL) approved the study protocol and waived the need for
122 informed consent, as the data were generated as part of routine clinical care and fully de-
123 identified for analytic purposes.

124 ***Outcomes and Predictors***

125 The study outcome (“critical illness” in patients hospitalized with COVID-19) was a
126 composite that included the need for invasive mechanical ventilation, transfer to the intensive
127 care unit (ICU), or in-hospital death. The need for invasive mechanical ventilation was identified
128 by the presence of any of the following procedures codes recorded in the hospital database for
129 billing purposes: 5A09357, 5A09457, 5A09557, 5A1935Z, 5A1945Z, 5A1955Z, 09HN7BZ,
130 09HN8BZ, 0BH13EZ, 0BH17EZ, 0BH18EZ, and 0CHY7BZ .

131 Potential predictors considered for the analysis included age, sex, and comorbidities
132 present on admission. The latter were measured using three multi-comorbidity indices: the
133 Charlson Comorbidity Index, the Elixhauser Index, and Queralt DxS. In another model, we also
134 used the 27 comorbidities included in the Elixhauser Index, each of them separately. The
135 Charlson and Elixhauser indices were estimated using the ICD-10 coding system proposed by
136 Quan et al.²² For the Charlson index, diagnostic weights were assigned based on the original
137 formulation by Charlson et al.¹⁵ For the Elixhauser Index, we used the weights proposed by
138 Moore et al.²³ Queralt DxS belongs to a family of three indices for predicting clinical outcomes in
139 hospitalized patients that provides a numerical value from the weighted sum of diagnostics
140 (primary, secondary present on admission, and complications) from a list of 2,119 diagnostic

141 code groups.¹⁹ In this analysis, we used an updated version of the index (version 6.0), computed
142 using healthcare data recorded in the routine care setting between 2018 and 2019.

143 **Statistics**

144 Data on demographic and clinical variables and outcomes were described as frequency
145 and percentage, mean and standard deviation (SD), or/and median and interquartile range (IQR,
146 defined as the 25th and 75th percentiles), as appropriate. The Charlson and Elixhauser indices
147 were computed using the Comorbidity library by Gasparini et al.;²⁴ Queralt DxS was generated
148 using R functions provided in Supplementary file 1 and used according to instructions provided in
149 Supplementary file 2. For descriptive purposes only, patients were also stratified in four risk levels
150 (i.e., low, moderate, high, and very high) based on the 50th, 80th, and 95th percentiles of Queralt
151 DxS, as described previously.¹⁹

152 Since the primary objective was to compare the performance of each index of comorbidity
153 when added to a given multivariate risk prediction model, we built five logistic regression models
154 to predict the composite outcome of critical illness: a baseline model with age and sex, three
155 models including the baseline and each of the comorbidity measures (i.e., Charlson index,
156 Elixhauser index, and Queralt DxS), and one including the 27 diagnoses included in the
157 Elixhauser index separately. The performance of each model was evaluated using five statistical
158 measures of model performance: the deviance, the Akaike information criterion (AIC),²⁵ the
159 Bayesian Information Criterion (BIC),²⁶ the area under the curve of the receiving operating
160 characteristics (AUROCC) curve, and the area under the precision-recall (AUPRC) curve.²⁷ The
161 95% confidence intervals (CI) of the AUROCC were estimated using 1,000 bootstrap samples
162 and confirmed with the DeLong criteria.²⁸ All analyses were performed using the R statistical
163 package (version 4.0.3).²⁹

164

165 Results

166 Study Population

167 Between June 15 and December 8, 2020, 4,607 patients were admitted to the ICS
 168 hospitals with COVID-19. Table 1 summarizes the demographic characteristics of the study
 169 population according to the incidence of critical illness (i.e., need of invasive mechanical
 170 ventilation, transfer to ICU, or death) on admission and/or during the hospitalization. The
 171 corresponding comorbidity burden, measured using the three analyzed indices, is shown in Table
 172 2. Patients who experienced critical illness on/after admission were significantly older and had
 173 higher scores of comorbidity burden irrespective of the index used. Men more frequently
 174 experienced critical illness.

175

176 **Table 1.** Demographic characteristics of patients included in the analysis, grouped by incidence
 177 of critical illness during the index hospitalization ^a

	Total (N=4607)	Without critical illness (N=3292)	Critical illness (N=1315)	p value
Age				< 0.001
Mean (SD)	60.5 (19.4)	58.2 (19.7)	66.1 (17.5)	
Median (Q1, Q3)	62.0 (48.0, 75.0)	59.0 (45.0, 73.0)	68.0 (56.0, 79.0)	
Age group				< 0.001
0 - 49	1255 (27.2%)	1046 (31.8%)	209 (15.9%)	
50 - 64	1288 (28.0%)	924 (28.1%)	364 (27.7%)	
65 - 74	853 (18.5%)	572 (17.4%)	281 (21.4%)	
75 - 84	733 (15.9%)	461 (14.0%)	272 (20.7%)	
85 ->	478 (10.4%)	289 (8.8%)	189 (14.4%)	
Sex				< 0.001
Men	2586 (56.1%)	1742 (52.9%)	844 (64.2%)	
Women	2021 (43.9%)	1550 (47.1%)	471 (35.8%)	

178 ^a Critical illness was defined as need for invasive mechanical ventilation, transfer to ICU, or in-
 179 hospital death.

180 ^b The risk groups low, moderate, high, and very high correspond to the 50th, 80th, and 95th
 181 percentiles of Queralt DxS in the study population, respectively.

182 **Abbreviations:** SD, standard deviation

183

184 **Table 2.** Clinical characteristics of patients included in the analysis, grouped by incidence of critical
 185 illness during the index hospitalization ^a

	Total (N=4607)	Without critical illness (N=3292)	Critical illness (N=1315)	<i>p</i> value
Charlson index				< 0.001
Mean (SD)	1.2 (1.7)	1.0 (1.6)	1.6 (2.0)	
Median (Q1, Q3)	0.0 (0.0, 2.0)	0.0 (0.0, 1.0)	1.0 (0.0, 2.0)	
Elixhauser index				< 0.001
Mean (SD)	2.8 (7.6)	1.8 (6.5)	5.5 (9.2)	
Median (Q1, Q3)	0.0 (-1.0, 5.0)	0.0 (-1.0, 4.0)	3.0 (-1.0, 11.0)	
Queralt DxS index				< 0.001
Mean (SD)	22.3 (15.9)	17.8 (12.2)	33.8 (18.2)	
Median (Q1, Q3)	20.0 (11.0, 30.0)	16.0 (9.0, 25.0)	30.0 (21.0, 42.0)	
Risk groups ^b				< 0.001
Low	2145 (46.6%)	1925 (58.5%)	220 (16.7%)	
Moderate	1509 (32.8%)	982 (29.8%)	527 (40.1%)	
High	730 (15.8%)	345 (10.5%)	385 (29.3%)	
Very high	223 (4.8%)	40 (1.2%)	183 (13.9%)	

186 ^a Critical illness was defined as need for invasive mechanical ventilation, transfer to ICU, or in-
 187 hospital death.

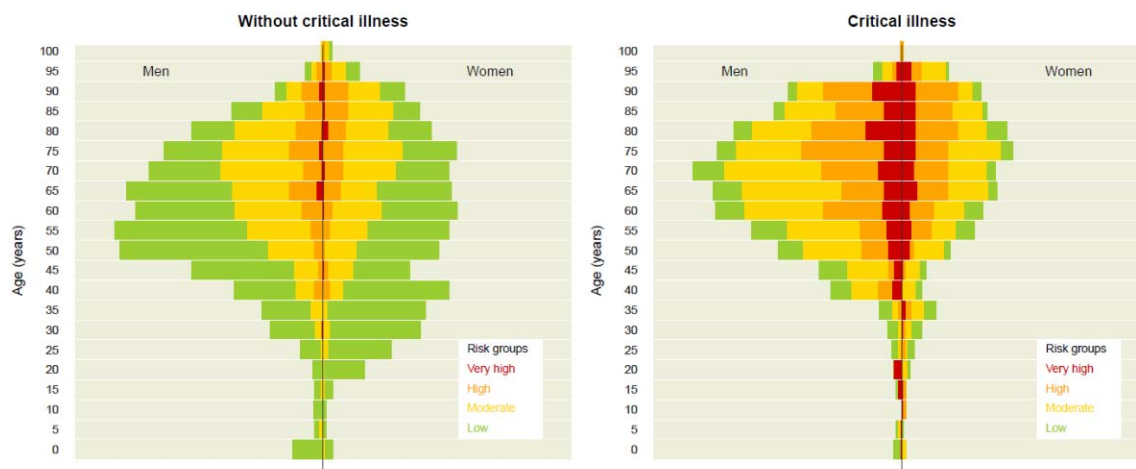
188 ^b The risk groups low, moderate, high, and very high correspond to the 50th, 80th, and 95th
 189 percentiles of Queralt DxS in the study population, respectively.

190 **Abbreviations:** SD, standard deviation

191

192 According to the distribution of patients across the five risk levels of Queralt DxS, 2,145
 193 (46.6%) patients were at low risk, 1,509 (32.8%) at moderate risk, 730 (15.8%) at high risk, and

194 223 (4.8%) at very high risk. Figure 1 shows the distribution of patients with and without critical
195 illness, according to age, sex, and Queralt risk group.



196

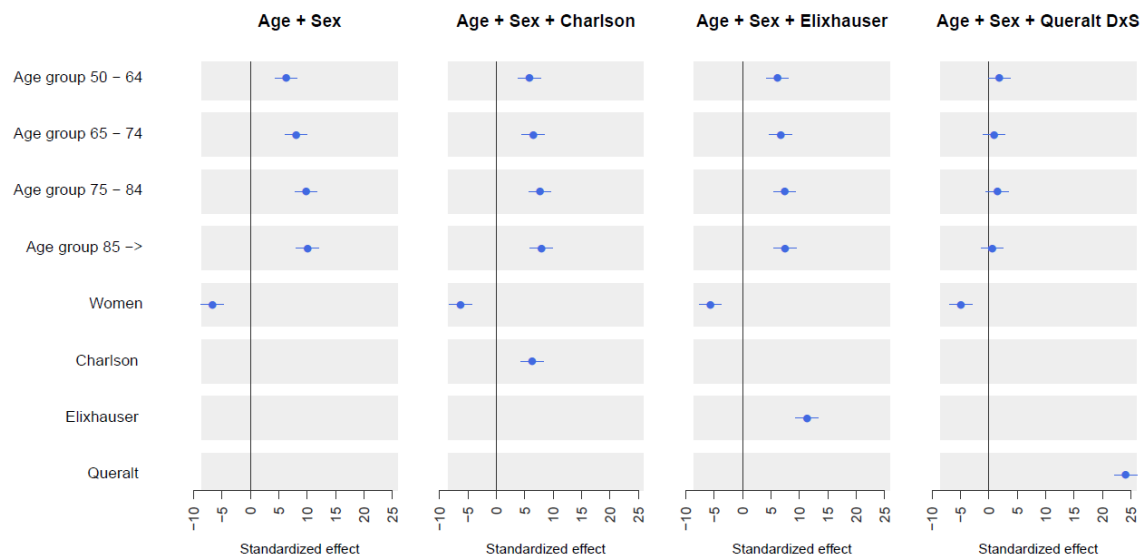
197 **Figure 1.** Participant distribution according to age, sex, and Queralt risk group (corresponding to
198 the 50th, 80th, and 95th percentiles of the Queralt Index).

199

200 ***Performance of comorbidity indices for prediction of critical*** 201 ***COVID-19 illness***

202 Comorbidities significantly contributed to predicting critical illness, irrespective of the
203 comorbidity index used in the model (Figure 2). The AUROCC was 0.641 (95% CI 0.624-0.660)
204 for the model including the Charlson index, 0.665 (0.645-0.681) for the Elixhauser index, and
205 0.787 (0.773-0.801) for Queralt DxS. In the model including Queralt DxS as a comorbidity
206 measure, age groups lost statistical significance.

207



208

209 **Figure 2.** Standardized coefficients according to four logistic regression models: base (age and
 210 sex), Charlson (age, sex, and Charlson index), Elixhauser (age, sex, and Elixhauser index),
 211 Queralt (age, sex, and Queralt DxS).

212

213

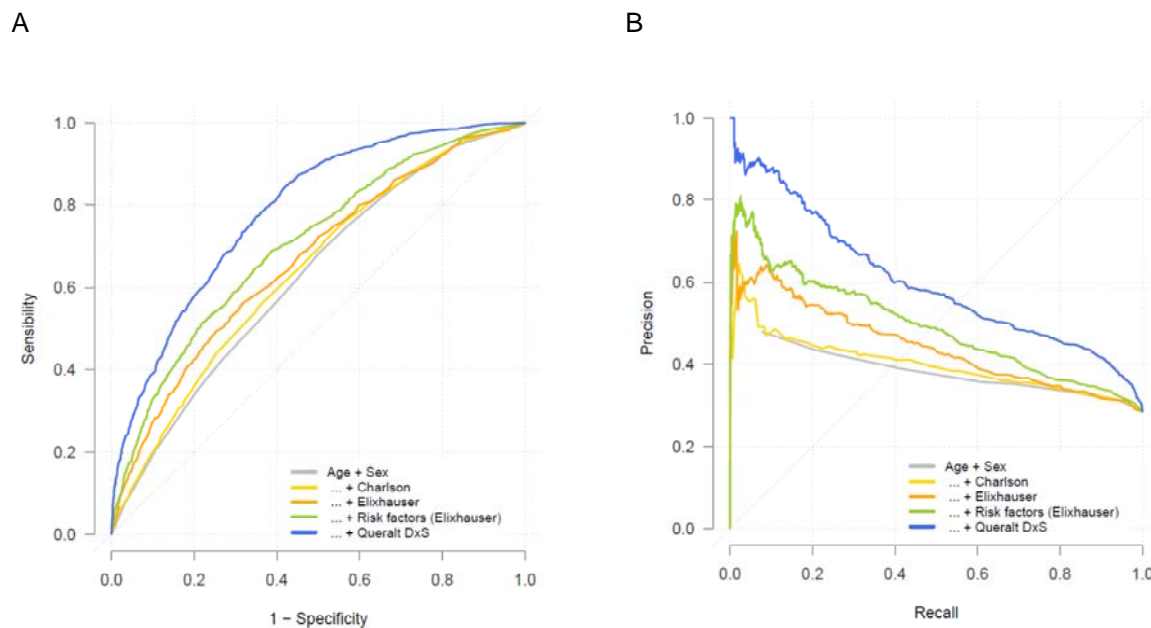
214 The results for AUROCC were consistent with those observed using all other metrics of
 215 model performance. In all, the best performance was consistently observed for the model that
 216 included age, sex, and Queralt DxS (Figure 2). The addition of Queralt DxS to the baseline model
 217 of age and sex significantly improved the AUROCC and AUPRC of the model compared with
 218 other measures of comorbidity. Figure 3 shows the ROC and precision-recall curves of the five
 219 models explored.

220

221

222

223



224 **Figure 3.** Performance of the five logistic regression models: base (age and sex), Charlson (age,
225 sex, and Charlson index), Elixhauser (age, sex, and Elixhauser index), Queralt (age, sex, and
226 Queralt DxS index), and the 27 diagnostic codes included in the Elixhauser index. **A:** receiving
227 operating characteristics curve. **B:** precision-recall curve.

228

229

230 Discussion

231 Our results using data from the healthcare databases of Catalonia confirm the relevance of
232 comorbidities on admission as a strong predictor of outcomes in patients hospitalized with
233 COVID-19, which is consistent with prior reports. Accordingly, the addition of any of the summary
234 measures of comorbidity burden used in our analysis improved the performance of predictive
235 models compared with age and sex only.

236 In the context of comorbidity burden being a strong predictor of outcomes in COVID-19
237 patients, we observed that the most comprehensive multi-comorbidity index evaluated, Queralt
238 DxS, showed the strongest contribution to explaining critical illness. Unlike the other two indices
239 investigated (i.e., the Charlson and Elixhauser indices), which estimate comorbidity burden from a
240 discrete list of diagnostics, Queralt DxS considers all conditions present on admission among a
241 list of 2,119 diagnostic groups. Hence, our findings align with the concerns highlighted by Ording
242 and Sørensen, who warned about residual confounding potentially introduced when
243 underestimating the comorbidity burden by using numerical indices based on rather restrictive
244 definitions of comorbidity.¹⁸ Remarkably, when introducing an exhaustive summary measure of
245 comorbidities such as Queralt DxS to the model, chronological age was no longer a significant
246 predictor. This suggests that the risk of critical illness in older patients is driven by the
247 accumulation of chronic conditions over time rather than by age per se.

248 In addition to comorbidities, various authors have identified other relevant predictors of
249 hospital outcomes in patients with COVID-19, such as inflammatory biomarkers, need for oxygen
250 therapy, and diagnostic images analyzed using advanced machine learning approaches.^{30–35}
251 While these models are helpful for informing clinical decisions based on assessments performed
252 during the hospital stay in individual patients, models that use retrospective information available
253 from electronic health records can provide hospital outcome estimates at the time of hospital
254 admission, thus aiding not only clinicians but also managers and policymakers in hospital
255 resource planning. Our results suggest that all models, irrespective of whether they include data
256 from in-hospital assessments, may benefit from a summary, highly comprehensive measure of
257 the comorbidity burden on admission, such as Queralt DxS. We have made this index and the
258 related code freely available online for research purposes as an open-source tool to facilitate
259 evaluation by other groups either in its current form in other populations or potentially as part of
260 clinical risk estimation tools combining comorbidities and clinical data on admission.

261 Indices that summarize a high number of variables into a single numerical index, such as
262 Queralt DxS, also have the advantage of allowing more parsimonious models. This is particularly

263 important for machine learning approaches, which may lose performance when increasing the
264 number of variables included in the model. Hence, although losing sight on the individual effect of
265 each diagnosis, summarizing the information from thousands of pre-existing diagnoses into a
266 single index that accounts for relative weights of each and their prognostic relevance for hospital
267 outcomes may enrich other models while minimizing the risk of overfitting.

268

269 ***Study Limitations***

270 One of the limitations of Queralt DxS is the lack validation in settings other than Catalonia,
271 however, we hope that making the software publicly available for research purposes will facilitate
272 external validation moving forward. Moreover, it is worth mentioning that the weights used to
273 estimate the relative contribution of each diagnostic group to health risk were calculated using
274 data collected during years 2018 and 2019, before the COVID-19 pandemic. Hence, although the
275 source population of the 8 relevant hospitals has remained unchanged since then, the sample of
276 patients admitted with COVID-19 included in this study and their clinical and sociodemographic
277 profile do differ from those used when developing the Queralt Indices, including Queralt DxS.
278 Therefore, the current analysis may be interpreted as a pseudo-validation of Queralt DxS in a
279 Catalan subpopulation hospitalized with COVID-19.

280 Also, as often occurs in retrospective analyses, our dataset was limited to the data
281 recorded in electronic records during routine care. Nonetheless, the universal coverage of our
282 healthcare system, and the cross-linking of healthcare data from the primary care and specialized
283 settings allowed us to access various sources and very comprehensive health data from our
284 study population and consider all possible diagnostics present on admission, as well as basic
285 demographic data such as age and sex. Conversely, we were not able to include some pre-
286 admission variables such as blood groups, which have been associated with COVID-19 severity³⁶
287 and might modulate the weight of comorbidities when estimating the risk of critical illness, or the

288 SARS-CoV-2 variant, which may influence clinical outcomes of COVID-19 patients. Nevertheless,
289 even without those pieces of information, the performance of Queralt DxS was very robust.

290

291 **Conclusion**

292 Our findings show that the burden of pre-existing comorbidities significantly improve the
293 prediction of risk of critical illness in patients hospitalized with COVID-19, particularly when
294 measured exhaustively using a tool such as Queralt DxS. This comorbidity index, which is freely
295 available for research purposes, may improve the accuracy of risk models aimed at supporting
296 clinical decision-making and hospital resource planning in hospitalized patients, including those
297 with COVID-19.

298

299 **Abbreviations**

300 AIC, Akaike information criterion. AUCPR, area under the precision-recall. AUCROC, area
301 under the receiving operating characteristics. CI, confidence interval. CM: clinical modification.
302 COVID-19, coronavirus disease 2019. ICD, international classification of diseases. ICS, Catalan
303 institute of health. ICU, intensive care unit. IQR, interquartile range,

304

305 **Ethics Approval and Informed Consent**

306 The study protocol was approved by the independent ethics committee of the Bellvitge
307 Biomedical Research Institute (IDIBELL), which waived the need for informed consent, as the
308 data were generated as part of routine clinical care and fully de-identified for analytic purposes.

309 **Acknowledgments**

310

311 **Author Contributions**

312 All authors made substantial contributions to conception and design, acquisition of data, or
313 analysis and interpretation of data; took part in drafting the article or revising it critically for
314 important intellectual content; gave final approval of the version to be published; and agree to be
315 accountable for all aspects of the work.

316

317 **Disclosure**

318 David Monterde declares that he is the developer of the Queralt System. This tool is
319 available online for research purposes at no cost. The author reports no other conflicts of interest
320 in this work, which did not receive specific funding.

321 **References**

- 322 1. Lee P, Kim C-U, Seo SH, Kim D-J. Current Status of COVID-19 Vaccine Development:
323 Focusing on Antigen Design and Clinical Trials on Later Stages. *Immune Netw.*
324 2021;21(1):e4. doi:10.4110/in.2021.21.e4
- 325 2. Grasselli G, Greco M, Zanella A, et al. Risk Factors Associated with Mortality among
326 Patients with COVID-19 in Intensive Care Units in Lombardy, Italy. *JAMA Intern Med.*
327 2020;1-11. doi:10.1001/jamainternmed.2020.3539
- 328 3. Turcotte JJ, Meisenberg BR, MacDonald JH, et al. Risk factors for severe illness in
329 hospitalized Covid-19 patients at a regional hospital. *PLoS One.* 2020;15(8 August).
330 doi:10.1371/journal.pone.0237558

- 331 4. Clark A, Jit M, Warren-Gash C, et al. Global, regional, and national estimates of the
332 population at increased risk of severe COVID-19 due to underlying health conditions in
333 2020: a modelling study. *Lancet Glob Heal*. 2020;8(8):e1003-e1017. doi:10.1016/S2214-
334 109X(20)30264-3
- 335 5. Petrilli CM, Jones SA, Yang J, et al. Factors associated with hospital admission and
336 critical illness among 5279 people with coronavirus disease 2019 in New York City:
337 Prospective cohort study. *BMJ*. 2020;369. doi:10.1136/bmj.m1966
- 338 6. Wynants L, Van Calster B, Collins GS, et al. Prediction models for diagnosis and
339 prognosis of covid-19: Systematic review and critical appraisal. *BMJ*. 2020;369:26.
340 doi:10.1136/bmj.m1328
- 341 7. Huang H, Cai S, Li Y, et al. Prognostic Factors for COVID-19 Pneumonia Progression to
342 Severe Symptoms Based on Earlier Clinical Features: A Retrospective Analysis. *Front*
343 *Med*. 2020;7:557453. doi:10.3389/fmed.2020.557453
- 344 8. Guo Y, Liu Y, Lu J, et al. Development and validation of an early warning score (EWAS)
345 for predicting clinical deterioration in patients with coronavirus disease 2019. *medRxiv*.
346 April 2020:2020.04.17.20064691. doi:10.1101/2020.04.17.20064691
- 347 9. Ji D, Zhang D, Xu J, et al. Prediction for progression risk in patients with COVID-19
348 pneumonia: The CALL score. *Clin Infect Dis*. 2020;71(6):1393-1399.
349 doi:10.1093/cid/ciaa414
- 350 10. Gidari A, De Socio GV, Sabbatini S, Francisci D. Predictive value of National Early
351 Warning Score 2 (NEWS2) for intensive care unit admission in patients with SARS-CoV-2
352 infection. *Infect Dis (Auckl)*. 2020;52(10):698-704. doi:10.1080/23744235.2020.1784457
- 353 11. Liang W, Liang H, Ou L, et al. Development and validation of a clinical risk score to predict
354 the occurrence of critical illness in hospitalized patients with COVID-19. *JAMA Intern Med*.
355 2020;180(8):1081-1089. doi:10.1001/jamainternmed.2020.2033

- 356 12. Matos J, Paparo F, Mussetto I, et al. Evaluation of novel coronavirus disease (COVID-19)
357 using quantitative lung CT and clinical data: prediction of short-term outcome. *Eur Radiol*
358 *Exp.* 2020;4(1):1-10. doi:10.1186/s41747-020-00167-0
- 359 13. Zou X, Li S, Fang M, et al. Acute Physiology and Chronic Health Evaluation II Score as a
360 Predictor of Hospital Mortality in Patients of Coronavirus Disease 2019. *Crit Care Med.*
361 2020;48(8):E657-E665. doi:10.1097/CCM.0000000000004411
- 362 14. Knight SR, Ho A, Pius R, et al. Risk stratification of patients admitted to hospital with
363 covid-19 using the ISARIC WHO Clinical Characterisation Protocol: Development and
364 validation of the 4C Mortality Score. *BMJ.* 2020;370:22. doi:10.1136/bmj.m3339
- 365 15. Charlson ME, Pompei P, Ales KL, MacKenzie CR. A new method of classifying prognostic
366 comorbidity in longitudinal studies: development and validation. *J Clin Epidemiol.*
367 1987;40(5):373-383.
- 368 16. Elixhauser A, Steiner C, Harris DR, Coffey RM. Comorbidity Measures for Use with
369 Administrative Data. *Med Care.* 1998;36(1):8-27. doi:10.1097/00005650-199801000-
370 00004
- 371 17. Huntley AL, Johnson R, Purdy S, Valderas JM, Salisbury C. Measures of multimorbidity
372 and morbidity burden for use in primary care and community settings: A systematic review
373 and guide. *Ann Fam Med.* 2012;10(2):134-141. doi:10.1370/afm.1363
- 374 18. Gulbech Ording A, Toft Sørensen H. Concepts of comorbidities, multiple morbidities,
375 complications, and their clinical epidemiologic analogs. *Clin Epidemiol.* 2013;5(1):199-203.
376 doi:10.2147/CLEP.S45305
- 377 19. Monterde D, Cainzos-Achirica M, Cossio-Gil Y, et al. Performance of comprehensive risk
378 adjustment for the prediction of in-hospital events using administrative healthcare data:
379 The queralt indices. *Risk Manag Healthc Policy.* 2020;13:271-283.
380 doi:10.2147/RMHP.S228415

- 381 20. Hick JL, Hanfling D, Wynia MK, Pavia AT. Duty to Plan: Health Care, Crisis Standards of
382 Care, and Novel Coronavirus SARS-CoV-2. *NAM Perspectives*. doi:10.31478/202003b
- 383 21. Mannucci E, Silverii GA, Monami M. Saturation of critical care capacity and mortality in
384 patients with the novel coronavirus (COVID-19) in Italy. *Trends Anaesth Crit Care*.
385 2020;33:33-34. doi:10.1016/j.tacc.2020.05.002
- 386 22. Quan H, Sundararajan V, Halfon P, et al. Coding algorithms for defining comorbidities in
387 ICD-9-CM and ICD-10 administrative data. *Med Care*. 2005;43(11):1130-1139.
388 doi:10.1097/01.mlr.0000182534.19832.83
- 389 23. Moore BJ, White S, Washington R, Coenen N, Elixhauser A. Identifying Increased Risk of
390 Readmission and In-hospital Mortality Using Hospital Administrative Data: The AHRQ
391 Elixhauser Comorbidity Index. *Med Care*. 2017;55(7):698-705.
392 doi:10.1097/MLR.0000000000000735
- 393 24. Gasparini A. Package "Comorbidity." [https://cran.r-](https://cran.r-project.org/web/packages/comorbidity/comorbidity.pdf)
394 [project.org/web/packages/comorbidity/comorbidity.pdf](https://cran.r-project.org/web/packages/comorbidity/comorbidity.pdf). Published 2020. Accessed
395 January 20, 2021.
- 396 25. Akaike H. A new look at the statistical model identification. *IEEE Trans Automat Contr*.
397 1974;19(6):716-723.
- 398 26. Schwarz G. Estimating the dimension of a model. *Ann Stat*. 1978;6:461-464.
- 399 27. Saito T, Rehmsmeier M. The precision-recall plot is more informative than the ROC plot
400 when evaluating binary classifiers on imbalanced datasets. *PLoS One*.
401 2015;10(3):e0118432.
- 402 28. DeLong ER, DeLong DM, Clarke-Pearson DL. Comparing the Areas under Two or More
403 Correlated Receiver Operating Characteristic Curves: A Nonparametric Approach.
404 *Biometrics*. 1988;44(3):837. doi:10.2307/2531595

- 405 29. R Core Team. R: A language and environment for statistical computing. R Foundation for
406 Statistical Computing, Vienna, Austria. <https://www.r-project.org>. Published 2017.
407 Accessed May 25, 2020.
- 408 30. Wang B, Jin S, Yan Q, et al. AI-assisted CT imaging analysis for COVID-19 screening:
409 Building and deploying a medical AI system. *Appl Soft Comput*. 2021;98:106897.
410 doi:10.1016/j.asoc.2020.106897
- 411 31. Li L, Qin L, Xu Z, et al. Using Artificial Intelligence to Detect COVID-19 and Community-
412 acquired Pneumonia Based on Pulmonary CT: Evaluation of the Diagnostic Accuracy.
413 *Radiology*. 2020;296(2):E65-E71. doi:10.1148/radiol.2020200905
- 414 32. Abbas A, Abdelsamea MM, Gaber MM. Classification of COVID-19 in chest X-ray images
415 using DeTraC deep convolutional neural network. *Appl Intell*. 2021;51(2):854-864.
416 doi:10.1007/s10489-020-01829-7
- 417 33. Li K, Fang Y, Li W, et al. CT image visual quantitative evaluation and clinical classification
418 of coronavirus disease (COVID-19). *Eur Radiol*. 2020;30(8):4407-4416.
419 doi:10.1007/s00330-020-06817-6
- 420 34. Tang Z, Zhao W, Xie X, et al. Severity Assessment of Coronavirus Disease 2019 (COVID-
421 19) Using Quantitative Features from Chest CT Images. *arXiv*. March 2020.
- 422 35. Song J, Wang H, Liu Y, et al. End-to-end automatic differentiation of the coronavirus
423 disease 2019 (COVID-19) from viral pneumonia based on chest CT. *Eur J Nucl Med Mol*
424 *Imaging*. 2020;47(11):2516-2524. doi:10.1007/s00259-020-04929-1
- 425 36. Ellinghaus D, Degenhardt F, Bujanda L, et al. Genomewide Association Study of Severe
426 Covid-19 with Respiratory Failure. *N Engl J Med*. 2020;383(16):1522-1534.
427 doi:10.1056/NEJMoa2020283

428

430

431