

## **Colorectal Cancer Disparities: A Systematic Review and Meta-Analysis**

Solomiya Syvyk, Chris Wirtalla, Sanford Roberts, Caitlin Finn, Rachel Rapaport Kelz

**IMPORTANCE** Colorectal Cancer (CRC) disparities continue to impact vulnerable populations. Across the CRC care continuum, most focus has been attributed to interventions in prevention, detection, and diagnosis. Varying surgical outcomes has emerged as an important contributing factor to CRC disparities.

**OBJECTIVE** To evaluate the distribution of publications across the CRC care continuum, examine interventional studies related to CRC Surgery, and synthesize findings in studies evaluating CRC disparities in Surgery.

**DATA SOURCES** We searched PubMed for prospective or retrospective studies reporting data on colorectal cancer disparities.

**STUDY SELECTION** Studies were selected if: (1) articles used US-sourced data (2) articles were published in the English language, and (3) Subjects included humans only or data.

**MAIN OUTCOMES AND MEASURES** Odds ratios for receipt of surgery for black versus white patients were pooled from studies that performed multivariate analysis. Subgroup analysis was performed per procedure type.

**RESULTS** No publications regarding interventions associated with improvements in colorectal cancer surgery were found. Of the 1600 CRC disparities articles identified, an analysis was conducted from 18 publications. It included 89,214 black patients and 646,990 white patients. Black patients were significantly less likely to receive surgical treatment for CRC than white patients. This was confirmed in the sensitivity analysis by cancer site (colon vs rectum).

**CONCLUSIONS AND RELEVANCE** Based on the results, the majority of studies on CRC disparities have focused on access to prevention, diagnosis and screening. Considering the impact of varying surgical outcomes on vulnerable populations, it should be considered to shift research focus from process-oriented interventions to outcomes.

## **Introduction:**

Colorectal cancer (CRC) is the most common GI malignancy<sup>1</sup> and presents 3<sup>rd</sup> in the highest number of cancer cases in the United States (US).<sup>2</sup> Vulnerable populations including people of lower socioeconomic status, racial and ethnic minorities, and rural residents often succumb to worse outcomes.<sup>3,4,5</sup> Up to 2010, the majority of published work, across the CRC care continuum, focused on prevention, detection, and diagnosis.<sup>6</sup>

More recently, there has been a resurgence of interest in cancer-related outcomes for vulnerable populations. However, the majority of interventional studies continue to address screening and stage of cancer at diagnosis.<sup>7,8</sup> Studies on the cancer care continuum have been process oriented rather than centered on outcomes. CRC care delivery has improved in the past decade, but outcomes disparities remain significant, with higher mortality<sup>9</sup> and lower overall survival rates<sup>10</sup> in vulnerable populations.

We conducted a systematic review and meta-analysis among studies of colorectal cancer care disparities published between 2011 and May 2021. The primary aims were to (1) examine the distribution of studies across the domains of cancer care delivery, (2) describe interventional studies designed to improve colorectal cancer surgical outcomes, and (3) synthesize the findings of studies evaluating CRC disparities in Surgery.

## **Methods:**

We performed this systemic review and meta-analysis in accordance with PRISMA guidelines.

## **Search Strategy:**

References for this systemic review and meta-analysis were identified through a search using PubMed. The search terms included “colorectal cancer disparities”, during the 10-year period, 2011 to May 2021 including the ‘10 years’ filter. Manual selection of relevant studies was carried out based on the related articles function. The citation lists of all retrieved articles were analyzed to identify other potentially relevant reports.

### **Study Selection and Data Extraction:**

The criteria for eligibility among studies, prior to collection, were the following: (1) US-sourced data (2) published in the English language, and (3) human subjects or data. The exclusion criteria included the use of non-US-sourced data. If studies compared US and non-US sourced data, they were excluded.

One author (S.S.) conducted the search and identification, and the selection of an article was reached by consensus with two authors (C.W. and R.R.K.). Each primary publication was grouped in accordance with the Institute of Medicine domains of the cancer care continuum: Prevention, Screening, or Diagnosis, Treatment, Survivorship, or End-of-Life Care. The following information was extracted from each primary publication: Studied disparities, Sample size, Data source, Outcome(s), Presence of disparate outcome(s), Summary of outcome(s). [ref] If the domain was categorized as Treatment, type of treatment(s) was included in the data extraction: Surgery, Systemic Therapy, Radiation, or Combined. Basic science studies and those involving epigenetics were excluded. Studies were included in the meta-analysis if they examined disparities related to surgical care including rates of use of surgery and outcomes. For these studies, we extracted the population descriptive factors, and sample size. Odds ratios (OR), including lower and upper bounds were recorded for use of surgery.

### **Statistical Analysis:**

For our analysis of receipt of surgery, ORs less than 1.00 indicated that the vulnerable race population in question received less surgery than their White counterparts. We pooled ORs in order to provide an aggregate value. For all analyses, ORs and their corresponding 95% confidence intervals (CI) were pulled from studies that performed multivariable analyses. Because some of the papers performed analyses for colorectal procedures combined, while others were clearly stratified by colon and rectal procedures, we also performed subgroup analyses for each procedure type (colorectal, colon, and rectal) with respective pooled ORs for each. This served as a sensitivity analysis of sorts to ensure that our results were not disproportionately driven by one specific procedure type.

In testing for heterogeneity of effects, we considered p-values of less than 0.05 or an  $I^2$  value of 50% or greater to be significant. In the case that heterogeneity was identified, we used a random-

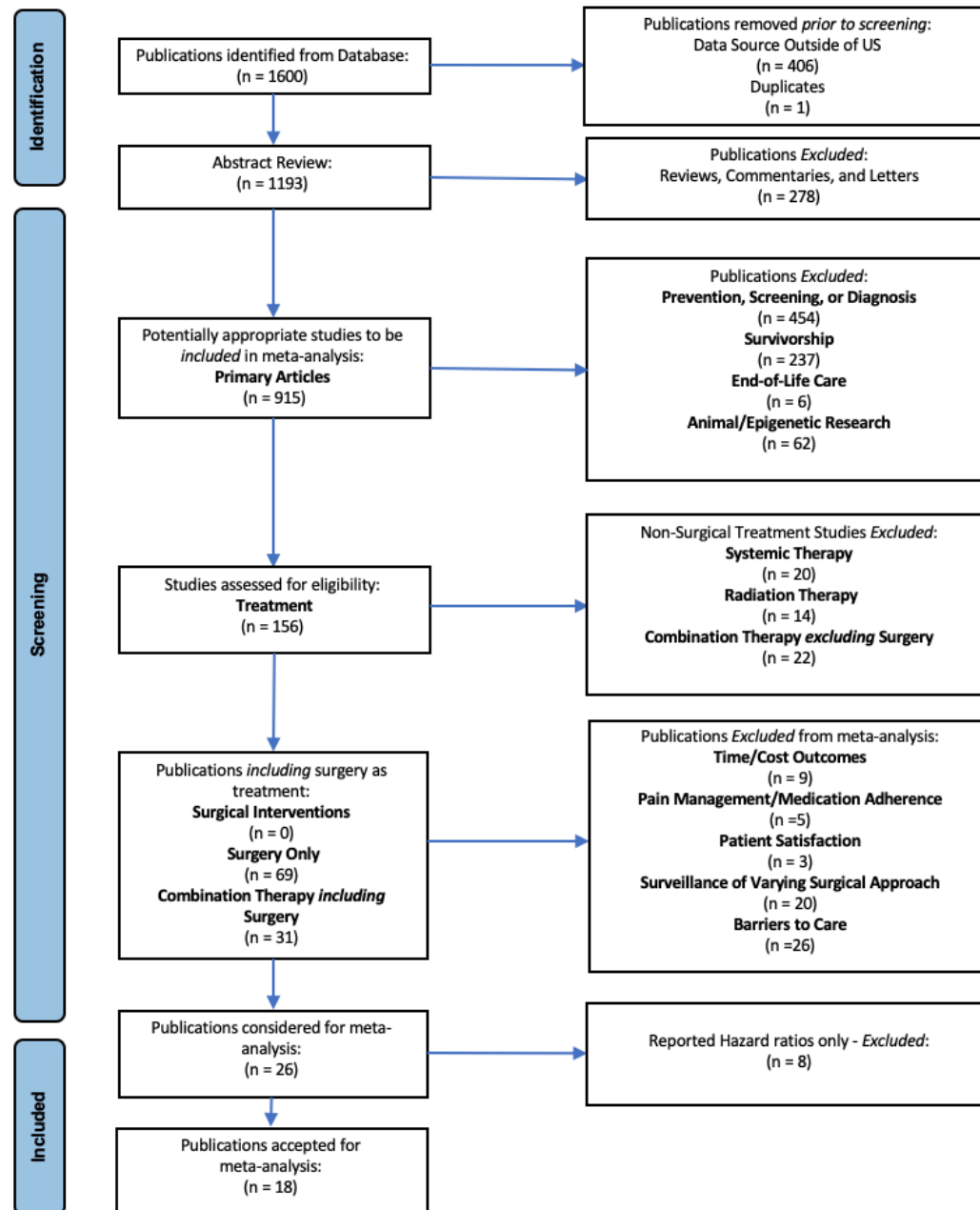
effects model with the DerSimonian-Laird method. Fixed effects were used for instances in which heterogeneity was not observed.

We used the Newcastle-Ottawa Scale (NOS) for risk of bias assessment. This scale assesses the potential of bias in 3 domains: (1) selection of the study groups; (2) comparability of groups; and (3) ascertainment of exposure and outcome. Studies with scores of 7 or higher were considered as having a low risk of bias, scores of 4 to 6 as having a moderate risk of bias, and scores less than 4 as having a high risk of bias. Funnel plots were also generated in order to visually inspect for potential publication bias.

### **Results:**

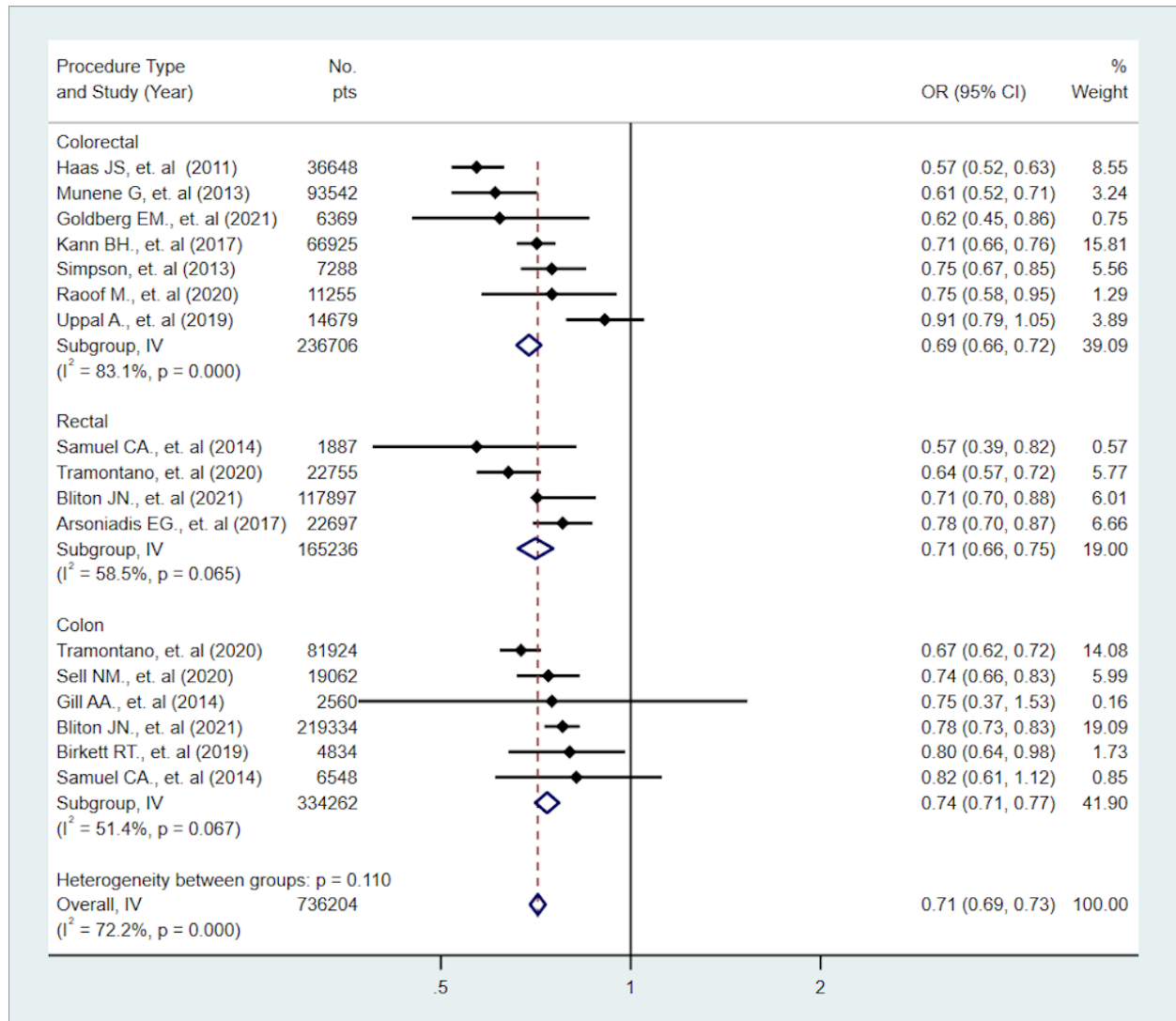
A total of 1600 publications were identified from the database (**Figure 1**). Among them, 0 reported interventional studies regarding surgery as the treatment within vulnerable populations. Between 2011 to 2021, 26 studies were published that reported on disparities in surgery rates and outcomes. Among them, 8 did not report odds ratio for inclusion in the final analysis. Ultimately, 18 studies were analyzed.<sup>11-28</sup> The total number of patients included 89,214 black patients and 646,990 white patients, ranging from 513 to 11,111 and 2,047 to 190,688, respectively. In all articles, a retrospective analysis of patients was presented including the outcome of surgical utilization. In 8 studies, variation in patient socioeconomic status was reported, 4 studies reported variation in patient geographic location (rural/urban), and 2 studies reported variation in patient education. Only 3 studies reported Mortality as an outcome. The quality of publication expressed by the NOS scale ranged from 6 to 9, with 94% including studies of high quality (NOS scores ranging from 7-9).

**Figure 1. Overview of Publications Search and Selection**

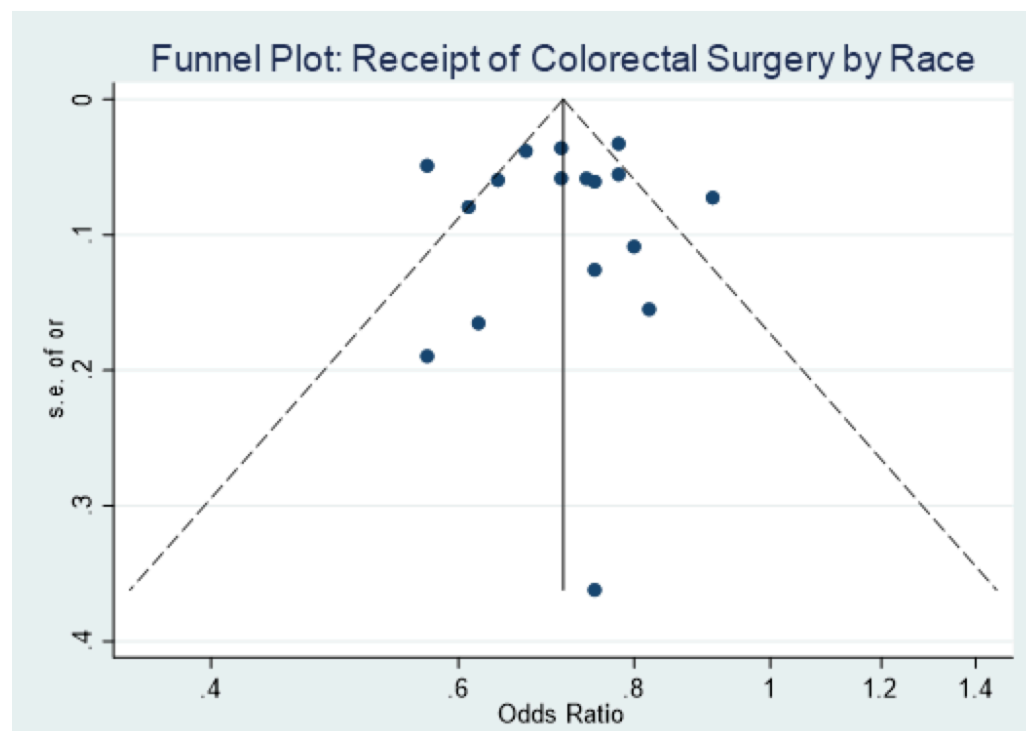


Due to all pooled results having I2 values greater than 50% -- overall (72.2%;  $p < 0.001$ ), colorectal (83.1%;  $p < 0.001$ ), rectal (58.5%;  $p = 0.065$ ), and colon (51.4%;  $p = 0.067$ ) -- we utilized a fixed-effects model for our analyses on receipt of surgery. (Figures 2 and 3)

**Figure 2. Meta – analysis (Forest Plot) of 18 Studies Assessing Receipt of Surgery in Black vs. White Patients with Colorectal Cancer, Colon Cancer, or Rectal Cancer**



**Figure 3. Funnel Plot for Publication Bias (All Studies Included) of Receipt of Surgery Meta-analysis**



### **Discussion:**

This systematic review and meta-analysis identified significant gaps in the scientific investigation of opportunities for improvements in colorectal cancer outcomes among vulnerable populations. Notably, we were unable to find a single interventional study that attempted to improve cancer care disparities via treatment interventions. All of the interventional studies targeted prevention, diagnosis and screening process. In the meta-analysis, black patients were significantly less likely to receive surgical treatment for CRC than white patients. This was confirmed in the sensitivity analysis by cancer site (colon vs rectum). Our work confirms and emphasizes previous reports indicating the racial disparity in the receipt of surgery.<sup>4</sup>

The disparities in use of Surgery for colorectal cancer represent a critical target for improvement in outcomes of colorectal cancer among the Black community. It is unclear if the problem is provider or patient driven and probably reflects the complex interaction between patients and providers.<sup>29</sup> Disparate outcomes of treatment may perpetuate myths regarding the effects of

surgery and magnify an underlying mistrust of the medical community.<sup>30</sup> Similarly, disparate outcomes of surgery due to treatment at low quality hospitals may drive concerns regarding surgical treatment among Black patients.<sup>31</sup>

Historically, screening rates for colorectal cancer differed significantly between black and white patients.<sup>32</sup> Several strategies have been shown to improve screening rates among vulnerable populations including the organization of educational group learning lessons in community health centers and regular contact with their primary care provider.<sup>33</sup> Many efforts have targeted the Black community and the national difference in screening rates has remained fixed while the disparities for vulnerable populations without screening campaigns has climbed.<sup>34</sup> Unfortunately, despite a small gap in screening, large mortality differences remain along with gaps in acceptance of surgery as a treatment. Given these findings, efforts such as those adopted for screening should be made to both increase use of Surgery as a treatment and, to improve the quality of surgical care recommended.

This study has several limitations. First, we aimed to identify interventions associated with improvements in colorectal cancer surgery and found none. It is plausible that our search terms missed articles specific to colorectal surgery because we only explored cancer disparities. However, we screened the titles of the top 300 recent publications in colorectal surgery disparities and found one single intervention study on the Enhanced Recovery After Surgery Program that reduced length of stay without mention of death or complications. Also, we were not able to perform an adequate sensitivity analysis on socioeconomic status and we were unable to perform a meta regression due to the inherent limitations of the studies included in this study.

In summary, the majority of studies on CRC disparities have focused on access to prevention, diagnosis and screening. Outcomes benefits have been slim due to persistent differences in receipt of treatment and the quality of care delivered. In order to eradicate disparities in cancer care delivery, we must move from process-oriented interventions to a focus on outcomes.



## References:

1. S Balzora, RB Issaka, A Anyane-Yeboa, DM Gray, FP May  
Impact of COVID-19 on colorectal cancer disparities and the way forward  
*Gastrointest Endosc*, 92 (2020), pp. 946-950
2. Howlader N, Noone AM, Krapcho M, et al. (eds). SEER Cancer Statistics Review, 1975-2018.  
National Cancer Institute, posted to the SEER website, April 2021. Last accessed April 19, 2021.
3. Schneider EB, Haider AH, Hyder O, Efron JE, Lidor AO, Pawlik TM. Assessing short- and long-term outcomes among black vs white Medicare patients undergoing resection of colorectal cancer. *Am J Surg*. 2013 Apr;205(4):402-8. doi: 10.1016/j.amjsurg.2012.08.005. Epub 2013 Jan 31. PMID: 23375764; PMCID: PMC3999705.
4. Akinyemiju T, Meng Q, Vin-Raviv N. Race/ethnicity and socio-economic differences in colorectal cancer surgery outcomes: analysis of the nationwide inpatient sample. *BMC Cancer*. 2016 Sep 5;16(1):715. doi: 10.1186/s12885-016-2738-7. PMID: 27595733; PMCID: PMC5011892.
5. Raman V, Adam MA, Turner MC, Moore HG, Mantyh CR, Migaly J. Disparity of Colon Cancer Outcomes in Rural America: Making the Case to Travel the Extra Mile. *J Gastrointest Surg*. 2019 Nov;23(11):2285-2293. doi: 10.1007/s11605-019-04270-5. Epub 2019 May 31. PMID: 31152346.
6. Naylor K, Ward J, Polite BN. Interventions to improve care related to colorectal cancer among racial and ethnic minorities: a systematic review. *J Gen Intern Med*. 2012 Aug;27(8):1033-46. doi: 10.1007/s11606-012-2044-2. PMID: 22798214; PMCID: PMC3403155.
7. Stange KC, Breslau ES, Dietrich AJ, Glasgow RE. State-of-the-art and future directions in multilevel interventions across the cancer control continuum. *J Natl Cancer Inst Monogr*. 2012 May;2012(44):20-31. doi: 10.1093/jncimonographs/lgs006. PMID: 22623592; PMCID: PMC3482971.
8. Gorin SS, Badr H, Krebs P, Prabhu Das I. Multilevel interventions and racial/ethnic health disparities. *J Natl Cancer Inst Monogr*. 2012 May;2012(44):100-11. doi: 10.1093/jncimonographs/lgs015. PMID: 22623602; PMCID: PMC3482960.
9. Tawk R, Abner A, Ashford A, Brown CP. Differences in Colorectal Cancer Outcomes by Race and Insurance. *Int J Environ Res Public Health*. 2015 Dec 22;13(1):ijerph13010048. doi: 10.3390/ijerph13010048. PMID: 26703651; PMCID: PMC4730439.
10. Al-Husseini MJ, Saad AM, Jazieh KA, Elmatboly AM, Rachid A, Gad MM, Ruhban IA, Hilal T. Outcome disparities in colorectal cancer: a SEER-based comparative analysis of racial subgroups. *Int J Colorectal Dis*. 2019 Feb;34(2):285-292. doi: 10.1007/s00384-018-3195-3. Epub 2018 Nov 15. PMID: 30443675.
11. Tramontano AC, Chen Y, Watson TR, Eckel A, Hur C, Kong CY. Racial/ethnic disparities in colorectal cancer treatment utilization and phase-specific costs, 2000-2014. *PLoS One*. 2020 Apr 14;15(4):e0231599. doi: 10.1371/journal.pone.0231599. PMID: 32287320; PMCID: PMC7156060.
12. Munene G, Parker RD, Shaheen AA, Myers RP, Quan ML, Ball CG, Dixon E. Disparities in the surgical treatment of colorectal liver metastases. *J Natl Med Assoc*. 2013 Summer;105(2):128-37. doi: 10.1016/s0027-9684(15)30112-7. PMID: 24079213.
13. Haas JS, Brawarsky P, Iyer A, Fitzmaurice GM, Neville BA, Earle C. Association of area sociodemographic characteristics and capacity for treatment with disparities in colorectal cancer care and mortality. *Cancer*. 2011 Sep 15;117(18):4267-76. doi: 10.1002/ncr.26034. Epub 2011 Mar 16. PMID: 21413000.

14. Fleming ST, Mackley HB, Camacho F, Yao N, Gusani NJ, Seiber EE, Matthews SA, Yang TC, Hwang W. Patterns of Care for Metastatic Colorectal Cancer in Appalachia, and the Clinical, Sociodemographic, and Service Provider Determinants. *J Rural Health*. 2016 Spring;32(2):113-24. doi: 10.1111/jrh.12132. Epub 2015 Aug 4. PMID: 26241785.
15. Simpson DR, Martínez ME, Gupta S, Hattangadi-Gluth J, Mell LK, Heestand G, Fanta P, Ramamoorthy S, Le QT, Murphy JD. Racial disparity in consultation, treatment, and the impact on survival in metastatic colorectal cancer. *J Natl Cancer Inst*. 2013 Dec 4;105(23):1814-20. doi: 10.1093/jnci/djt318. Epub 2013 Nov 14. PMID: 24231453; PMCID: PMC4383284.
16. Hines R, Markossian T, Johnson A, Dong F, Bayakly R. Geographic residency status and census tract socioeconomic status as determinants of colorectal cancer outcomes. *Am J Public Health*. 2014 Mar;104(3):e63-71. doi: 10.2105/AJPH.2013.301572. Epub 2014 Jan 16. PMID: 24432920; PMCID: PMC3953793.
17. Sell NM, Shafique N, Lee H, Lee GC, Tanabe KK, Ferrone CR, Blaszkowsky LS, Hong TS, Wo J, Qadan M. Socioeconomic determinants of the surgical treatment of colorectal liver metastases. *Am J Surg*. 2020 Oct;220(4):952-957. doi: 10.1016/j.amjsurg.2020.02.019. Epub 2020 Feb 21. PMID: 32107013.
18. Uppal A, Smieliauskas F, Sharma MR, Maron SB, Polite BN, Posner MC, Turaga K. Facilities that service economically advantaged neighborhoods perform surgical metastasectomy more often for patients with colorectal liver metastases. *Cancer*. 2020 Jan 15;126(2):281-292. doi: 10.1002/cncr.32529. Epub 2019 Oct 22. PMID: 31639217.
19. Akinyemiju T, Meng Q, Vin-Raviv N. Race/ethnicity and socio-economic differences in colorectal cancer surgery outcomes: analysis of the nationwide inpatient sample. *BMC Cancer*. 2016 Sep 5;16(1):715. doi: 10.1186/s12885-016-2738-7. PMID: 27595733; PMCID: PMC5011892.
20. Gill AA, Enewold L, Zahm SH, Shriver CD, Stojadinovic A, McGlynn KA, Zhu K. Colon cancer treatment: are there racial disparities in an equal-access healthcare system? *Dis Colon Rectum*. 2014 Sep;57(9):1059-65. doi: 10.1097/DCR.000000000000177. PMID: 25101601; PMCID: PMC4126203.
21. Birkett RT, O'Donnell MMT, Epstein AJ, Saur NM, Bleier JIS, Paulson EC. Elective colon resection without curative intent in stage IV colon cancer. *Surg Oncol*. 2019 Mar;28:110-115. doi: 10.1016/j.suronc.2018.11.010. Epub 2018 Nov 13. PMID: 30851883.
22. Arsoniadis EG, Fan Y, Jarosek S, Gaertner WB, Melton GB, Madoff RD, Kwaan MR. Decreased Use of Sphincter-Preserving Procedures Among African Americans with Rectal Cancer. *Ann Surg Oncol*. 2018 Mar;25(3):720-728. doi: 10.1245/s10434-017-6306-4. Epub 2017 Dec 27. PMID: 29282601.
23. Kann BH, Park HS, Johnson SB, Chiang VL, Yu JB. Radiosurgery for Brain Metastases: Changing Practice Patterns and Disparities in the United States. *J Natl Compr Canc Netw*. 2017 Dec;15(12):1494-1502. doi: 10.6004/jncn.2017.7003. PMID: 29223987.
24. Samuel CA, Landrum MB, McNeil BJ, Bozeman SR, Williams CD, Keating NL. Racial disparities in cancer care in the Veterans Affairs health care system and the role of site of care. *Am J Public Health*. 2014 Sep;104 Suppl 4(Suppl 4):S562-71. doi: 10.2105/AJPH.2014.302079. PMID: 25100422; PMCID: PMC4151900.
25. Shanja-Grabarz X, McAuliffe JC, Kanneganti M, Friedmann P, Levine R, Huang R, In H. Colorectal Cancer Surgery Outcomes in the Non-elective Setting: a Target for Improvement. *J Gastrointest Surg*. 2021 Feb 17. doi: 10.1007/s11605-021-04951-0. Epub ahead of print. PMID: 33598847.
26. Raoof M, Jutric Z, Haye S, Ituarte PHG, Zhao B, Singh G, Melstrom L, Warner SG, Clary B, Fong Y. Systematic failure to operate on colorectal cancer liver metastases in California. *Cancer Med*. 2020

Sep;9(17):6256-6267. doi: 10.1002/cam4.3316. Epub 2020 Jul 20. PMID: 32687265; PMCID: PMC7476837.

27. Goldberg EM, Berger Y, Sood D, Kurnit KC, Kim JS, Lee NK, Yamada SD, Turaga KK, Eng OS. Differences in Sociodemographic Disparities Between Patients Undergoing Surgery for Advanced Colorectal or Ovarian Cancer. *Ann Surg Oncol*. 2021 May 6. doi: 10.1245/s10434-021-10086-y. Epub ahead of print. PMID: 33959831.

28. Bliton JN, Parides M, Muscarella P, Papalezova KT, In H. Understanding Racial Disparities in Gastrointestinal Cancer Outcomes: Lack of Surgery Contributes to Lower Survival in African American Patients. *Cancer Epidemiol Biomarkers Prev*. 2021 Mar;30(3):529-538. doi: 10.1158/1055-9965.EPI-20-0950. Epub 2020 Dec 10. PMID: 33303644; PMCID: PMC8049948.

29. A.H. Haider, V.K. Scott, K.A. Rehman, C. Velopulos, J.M. Bentley, E.E. Cornwell III, et al. Racial disparities in surgical care and outcomes in the United States: a comprehensive review of patient, provider, and systemic factors *J Am Coll Surg*, 216 (3) (Mar 2013), pp. 482-492

30. Hoffman RL, Bryant B, Allen SR, Lee MK, Aarons CB, Kelz RR. Using community outreach to explore health-related beliefs and improve surgeon-patient engagement. *J Surg Res*. 2016 Dec;206(2):411-417. doi: 10.1016/j.jss.2016.08.058. Epub 2016 Aug 20. PMID: 27884337.

31. Dimick, J., Ruhter, J., Sarrazin, M. V., & Birkmeyer, J. D. (2013). Black patients more likely than whites to undergo surgery at low-quality hospitals in segregated regions. *Health affairs (Project Hope)*, 32(6), 1046–1053. <https://doi.org/10.1377/hlthaff.2011.1365>

32. Jerant AF, Fenton JJ, Franks P. Determinants of Racial/Ethnic Colorectal Cancer Screening Disparities. *Arch Intern Med*. 2008;168(12):1317–1324. doi:10.1001/archinte.168.12.1317

33. Liu D, Schuchard H, Burston B, Yamashita T, Albert S. Interventions to Reduce Healthcare Disparities in Cancer Screening Among Minority Adults: a Systematic Review. *J Racial Ethn Health Disparities*. 2021 Feb;8(1):107-126. doi: 10.1007/s40615-020-00763-1. Epub 2020 May 15. PMID: 32415578.

34. Demb J, Gupta S. Racial and Ethnic Disparities in Colorectal Cancer Screening Pose Persistent Challenges to Health Equity. *Clin Gastroenterol Hepatol*. 2020 Jul;18(8):1691-1693. doi: 10.1016/j.cgh.2019.11.042. Epub 2019 Nov 29. PMID: 31786329; PMCID: PMC7341600.