

1 **Gestational diabetes mellitus in women born small or premature:**
2 **Systematic review and meta-analysis**

3
4 **Corresponding author**

5 Yasushi Tsujimoto, MD, MPH

6 Visiting researcher, Department of Health Promotion and Human Behavior,

7 Kyoto University Graduate School of Medicine / School of Public Health, Yoshida Konoe-cho,

8 Sakyo-ku, Kyoto 606-8501, Japan

9 Email: yssh0108@yahoo.co.jp

10

11 **Authors and affiliations**

12 Yasushi Tsujimoto, MD, MPH^{1,2}, Yuki Kataoka, MD, DrPH^{2,3}, Masahiro Banno, MD, PhD^{2,4},

13 Shunsuke Taito PT, PhD^{2,5}, Masayo Kokubo MD⁶, Yuko Masuzawa, CNM, PhD^{7,8}, Yoshiko

14 Yamamoto, MD, PhD^{8,9}

15

16 1. Department of Health Promotion and Human Behavior, Kyoto University Graduate School of
17 Medicine / School of Public Health, Yoshida Konoe cho, Sakyo-ku, Kyoto, Japan.

18 2. Systematic Review Peer Support Group, Koraibashi, Chuo-ku, Osaka, Japan

19 3. Department of Internal Medicine, Kyoto Min-Iren Asukai Hosipital, Kyoto, Japan

20 4. Department of Psychiatry, Seichiryō Hospital, Tsurumai 4-16-27, Showa-ku, Nagoya, Aichi,
21 Japan

22 5. Division of Rehabilitation, Department of Clinical Practice and Support, Hiroshima
23 University Hospital, Kasumi 1-2-3, Minami-ku, Hiroshima, Japan

24 6. Department of Neonatology, Nagano Children's Hospital, Toyoshina 3100, Azumino,
25 Nagano, Japan

26 7. Tokyo Healthcare University, Chiba Faculty of Nursing, Division of Nursing, Kaijinchonishi
27 1-1042-2, Funabashi, Chiba, Japan

28 8. Cochrane Japan, Akashi Cho 10-1, Chuo-ku, Tokyo, Japan

29 9. Department of Health Policy, National Center for Child Health and Development, 2-10-1
30 Okura, Setagaya-ku, Tokyo, Japan

31

32

33 **Word count:** 2540 words

34

35

36 *What is already known on this subject?*

37 Approximately 10–15% of infants are born small or premature worldwide, and these children are
38 at high risk of diseases, such as type 1 and 2 diabetes mellitus, hypertension, obesity, and kidney
39 disease, in adulthood. A narrative review reported in 2007 that women born with LBW are at risk
40 of gestational diabetes mellitus, but included a small number of studies. Several subsequent
41 studies have been published since then, but there is no quantitative summary of the relevant
42 evidence to date.

43

44 *What this study adds?*

45 This is the first systematic review and meta-analysis of observational studies that provides a
46 comprehensive summary of evidence on the association between birth size or premature birth
47 and future GDM risk including previously unpublished data and a large sample size. LBW,
48 preterm birth, and SGA status may be prognostic factors for GDM.

49

50 **ABSTRACT**

51 **Background:** Women born preterm or with low birthweight (LBW) have an increased future risk
52 of gestational diabetes mellitus (GDM) during pregnancy; however, a quantitative summary of
53 evidence is lacking.

54 In this study, we aimed to investigate whether being born preterm, or with LBW or small for
55 gestational age (SGA) are associated with GDM risk.

56 **Methods:** We searched the MEDLINE, Embase, and CINAHL databases and study registries,
57 including ClinicalTrials.gov and ICTRP, from launch until 29 October 2020 for observational
58 studies examining the association between birth weight or gestational age and GDM were
59 eligible. We pooled the odds ratios and 95% confidence intervals using the DerSimonian and
60 Laird random-effects model.

61 **Results:** Eighteen studies were included (N = 827,382). The meta-analysis showed that being
62 born preterm, with LBW or SGA was associated with increased risk of GDM (pooled odds ratio
63 = 1.84; 95% confidence interval: 1.54 to 2.20; $I^2 = 78.3\%$; $\tau^2 = 0.07$). Given a GDM prevalence
64 of 2.0%, 10%, and 20%, the absolute risk differences were 1.6%, 7.0%, and 11.5%, respectively.
65 The certainty of evidence was low due to serious concerns of risk of bias and publication bias.

66 **Conclusion:** Women born prematurely, with LBW or SGA status, may be at increased risk for
67 GDM. However, whether this should be considered in clinical decision-making depends on the
68 prevalence of GDM.

69

70

71 **INTRODUCTION**

72 Gestational diabetes mellitus (GDM) is a common pregnancy complication, with prevalence
73 estimates being 1–36%, depending on the population studied and diagnostic criteria employed ¹.
74 GDM is defined as preconceptionally unconfirmed glucose intolerance identified in the second
75 or third trimester of pregnancy ². Adverse perinatal outcomes associated with uncontrolled
76 diabetes in pregnancy include spontaneous abortion, foetal anomalies, preeclampsia, stillbirth,
77 macrosomia, neonatal hypoglycaemia, and neonatal hyperbilirubinemia, among others ³. Women
78 with a history of GDM are at a higher risk of type 2 diabetes than their counterparts ^{4,5}.

79 Low birth weight (LBW) and preterm birth are the leading causes of neonatal death and
80 childhood-onset morbidity ⁶. Approximately 10–15% of infants are born small or premature
81 worldwide ^{6,7}. Children who survive are at a higher risk of diseases, such as type 1 and 2
82 diabetes mellitus, hypertension, obesity, and kidney disease, in adulthood ⁸. The exact
83 mechanism underlying these risks remains unclear; the Barker hypothesis proposes that
84 pregnancy may activate biological vulnerability in utero ⁹.

85 A narrative review reported in 2007 that women born with LBW are at risk of GDM ¹⁰,
86 but included a small number of studies, and additional research has been published subsequently
87 ^{11,12}. There is no quantitative summary of the relevant evidence to date. We performed the first
88 systematic review and meta-analysis of observational studies examining the association between
89 preterm birth, with LBW, or with SGA status and the future risk of GDM.

90

91 **METHODS**

92 We followed the Meta-analysis of Observational Studies in Epidemiology (MOOSE) guidelines
93 (Supplementary Table S1) in the reporting of this study; the study methodology adhered to the

94 Cochrane Handbook^{13, 14}. Evidence certainty assessment was based on the Grading of
95 Recommendations, Assessment, Development and Evaluation (GRADE) criteria for prognostic
96 factors¹⁵. The protocol was prospectively registered with PROSPERO (CRD42020142004).

97

98 **Searches**

99 We searched databases such as MEDLINE, Embase, and CINAHL and study registries including
100 ClinicalTrials.gov and ICTRP from launch until 29 October 2020. Qualified authors (YT and
101 YK) developed the search strategy (Supplementary Table S2). No language or publication status
102 restrictions were imposed. Reference lists of shortlisted studies were searched manually for
103 additional potentially eligible titles.

104

105 **Study selection**

106 Studies were eligible for inclusion if they were observational cohort or case-control studies. Case
107 reports or series were excluded from the present review. We included studies that involved
108 pregnant women regardless of study setting. The exposures of interest were the infancy
109 parameters of presently pregnant women and were defined as follows: LBW, birth weight <2500
110 g⁷; small for gestational age (SGA), birth weight <10th percentile for the given gestational age,
111 stratified by sex, using the average weight of gestational age¹⁶; and preterm birth, gestational
112 age of <37 weeks¹⁷. When data on both birth weight and gestational age were reported, we
113 extracted data on birth weight in preference. The comparator group comprised women who were
114 not born small or born at full term.

115 The outcome of interest was GDM, as defined by the International Association of
116 Diabetes Pregnancy Study Groups (IADPSG), World Health Organization (WHO), American

117 Diabetes Association or Endocrine Society, or International Classification of Diseases 11th
118 revision (ICD-11) or earlier¹⁸⁻²². If studies used other definitions, they were included in the
119 present review; however, we removed them to assess the robustness of the pooled estimates. For
120 studies that reported LBW, preterm birth, or SGA as a risk factor in pregnant women without
121 reporting the association with GDM, we contacted study authors to acquire estimates of such
122 associations, where available. These additional estimates were included in the present analysis,
123 provided they were measures of an association between at least one of the exposure factors and
124 the outcome of interest.

125 Two investigators independently screened article titles and abstracts to shortlist relevant
126 studies; subsequently, the same sets of authors assessed the full text for study eligibility. In cases
127 where data were incomplete and precluded study eligibility assessment, we contacted study
128 authors with requests for clarification. Multiple publications were assessed together; the record
129 with the most complete data was included in the present review.

130

131 **Data extraction and quality assessment**

132 Two investigators independently extracted data from all included studies, using a pilot-tested,
133 uniform data extraction sheet. Any discrepancies between reviewers were resolved through
134 consensus between two reviewers or arbitration by a third reviewer, as required. For studies that
135 compared three or more exposure groups, we contacted study authors to obtain data comparing
136 two groups of interest. In cases where this approach was unsuitable, we extracted the relevant
137 data, as reported, and performed subgroup comparisons between the two groups subdivided by
138 specific thresholds (i.e., birth weight 2500 g, <10th percentile, and gestational age 37 weeks for
139 LBW, SGA, and preterm birth, respectively), as this approach may have resulted in conservative

140 effect estimates. The same authors who performed data extraction also independently assessed
141 the risk of bias in each study, using the Quality In Prognosis Studies (QUIPS) tool²³. We
142 prospectively identified the following candidate confounders: age, obesity, smoking status,
143 socioeconomic status, diabetes mellitus before the index gestation, and family history of diabetes
144^{24, 25}.

145

146 **Data synthesis and analysis**

147 We obtained pooled and adjusted ORs with 95% CI estimates of GDM for the exposure and
148 control groups using the DerSimonian and Laird random-effects method. We calculated the
149 absolute risk difference for GDM between the exposure and control groups in low- (control
150 group: GDM risk was assumed to be 2.0%), moderate- (10%), and high- (20%) prevalence
151 groups, using the pooled odds ratios (OR) and 95% confidence intervals (CIs). This assumption
152 was made based on a previous report and our clinical expertise²⁶.

153 Publication bias was assessed qualitatively by visual inspection of the funnel plot and
154 quantitatively by Egger's test²⁷. Where asymmetry was observed in the funnel plot, we
155 investigated the likely source of this asymmetry using the contour-enhanced funnel plot.
156 We evaluated between-study heterogeneity visually, using forest plots, and quantitatively, using
157 I^2 and τ^2 statistics. We used the Cochrane chi-square test to calculate I^2 and τ^2 statistics. We
158 performed a pre-specified subgroup analysis based on types of exposure (preterm birth, LBW, or
159 SGA). In pre-specified sensitivity analyses, we used crude ORs instead of adjusted ORs and
160 excluded studies using non-standard definitions of GDM. Some studies assessed the risk of
161 GDM among women born with a weight >4000 g (macrosomia); these studies were excluded

162 from post-hoc sensitivity analysis, as a previous review has shown a U-shaped association
163 between mother's birth weight and GDM risk ¹⁰.

164 All analyses were performed using STATA 14.2 (StataCorp LP, Texas) and RevMan 5.4
165 (Cochrane Collaboration, UK). Two-sided *p*-values <0.05 were considered indicative of
166 statistical significance.

167

168 **RESULTS**

169 Figure 1 presents the flow of studies through the present review selection process. After
170 screening 15,281 records, 59 records representing 44 studies were assessed for eligibility based
171 on the full text. Finally, 18 studies including 827,382 participants were included in the
172 qualitative synthesis; 15 studies including 825,622 participants were included in quantitative
173 synthesis. Supplementary Table S3 lists all excluded studies with reasons for exclusion. We did
174 not find any ongoing or unpublished studies by searching study registries. By contacting authors,
175 we obtained unpublished data from two studies ^{12,28}.

176 Supplementary Table S4 shows the detail characteristics of the included studies. Nine
177 studies (810,197 participants) used population-based samples, 2 (6,915 participants) were
178 multicentre studies, 6 (9,439 participants) were single-centre studies, and 1 (831 participants) did
179 not specify the study setting. Supplementary Table S5 shows the details of the inclusion and
180 exclusion criteria of the included studies. All studies were conducted in high-income countries,
181 mostly between the late 1990s and early 2010s. The studies included participants of non-
182 Hispanic White, Hispanic, African, Asian, or Indian descent. Two studies (28,722 participants)
183 only included women about to deliver their first child. Two studies (140,714 participants)
184 compared pregnant women born preterm and at full term, 9 (216,439 participants) compared

185 women born with and without LBW, and 4 (468,469 participants) compared women born with
186 and without SGA status. The remaining 3 studies (1,760 participants) only compared the mean
187 birth weight of women with or without GDM. Figure S1 presents a summary of study quality
188 assessment using the QUIPS tool²³. The overall quality of the included studies was moderate to
189 low, mainly due to uncontrolled confounders.

190 **Prematurity and size at birth and the risk of gestational diabetes mellitus**

191 The median GDM rate in the control groups of the included cohort studies was 2.9% (range:
192 0.5% to 22%). Figure 2 presents a forest plot summarising the studies that assessed the
193 association between preterm birth or size at birth with GDM. Premature birth, LBW, and SGA
194 status were associated with a higher GDM risk (pooled OR, 1.84; 95% CI: 1.54 to 2.20; $I^2 =$
195 78.3%; $\tau^2 = 0.07$). Supplementary Table S5 summarises the absolute risk difference in pregnant
196 women born with LBW, SGA status, or born preterm in the low- (2.0% risk of GDM in the
197 control group), medium- (10%), and high- (20%) GDM prevalence groups. The absolute risk
198 increases were 1.6% (95% CI: 1.0 to 2.1%), 7.0% (95% CI: 4.6 to 9.6%), and 11.5% (95% CI:
199 7.8 to 15.5%) in low-, moderate-, and high-prevalence settings, respectively. The certainty of
200 evidence was low due to serious concerns of risk of bias and publication bias.

201 Figure 3 presents study estimates in a funnel plot. The plot appeared asymmetrical, and
202 Egger's test for funnel plot asymmetry was statistically significant (p -value = 0.030).
203 Supplementary Figure S2 shows the contour-enhanced funnel plot, which suggests the existence
204 of some missing studies on the left-hand side of the plot; these studies would have yielded
205 statistically non-significant findings.

206 Data on the birth weight of mothers with or without GDM, obtained from three studies
207 excluded from the meta-analysis, are presented in Supplementary Table S5. These studies

208 consistently reported that mothers with GDM were born with lower birth weights than those
209 without GDM.

210

211 **Subgroup and sensitivity analyses**

212 There was substantial between-study heterogeneity ($I^2 = 78.3\%$). Figure 2 presents the results of
213 subgroup analyses for the types of exposure (LBW, preterm birth, or SGA). Although all types of
214 exposure were associated with GDM, there was significant heterogeneity due to the type of
215 exposure (p for interaction = 0.004). The results of additional sensitivity analyses are presented
216 in Supplementary Figure S3, Figure S4, and Figure S5.

217

218 **DISCUSSION**

219 **Main Findings**

220 We found that women born small or premature may have future risk of GDM. However, the
221 evidence certainty was low, and the presented findings may be overestimated, as we observed
222 some evidence of publication bias. These findings were approximately consistent across the
223 subgroups, including different populations, exposures, and studies of varied methodological
224 quality; these findings were robust in sensitivity analyses.

225 Our finding that the mother's size at birth or premature birth may affect GDM risk was
226 consistent with that of a previous narrative review¹⁰. The strength of this association was similar
227 to that observed in women with a family history of diabetes mellitus, an established risk factor
228 for GDM²⁹. However, the importance of the risk factor in clinical decision depends on the
229 absolute risk difference. Our findings suggested that careful review of the mother's birth status
230 may indicate her risk of GDM and guide pregnancy management in moderate to high prevalence

231 settings. The mother's preterm birth status and size at birth are not currently considered risk
232 factors for GDM in any of the major guidelines or risk models^{30,31}. Our findings may help
233 further refine these guidelines and models or to develop new ones.

234 The certainty of evidence for the association between premature birth or SGA status and
235 GDM was low due to the high risk of publication bias, as shown by funnel-plot analysis. The
236 contour-enhanced funnel plot suggests that studies with non-significant findings may not have
237 been published. Although we did not identify any ongoing or unpublished studies, this did not
238 eliminate the risk of publication bias, as observational studies are less likely to be registered than
239 clinical trials³². Thus, the reported estimates may be overestimates. The studies included in this
240 review tended not to adjust for confounders, such as smoking, obesity, socioeconomic status, and
241 family history of diabetes. Future studies should adjust for these factors.

242 The main result of this review was subject to substantial between-study heterogeneity, as shown
243 by the I^2 statistic¹³. This heterogeneity may be due to the different types of exposure (LBW,
244 SGA, or preterm birth) considered in this study. However, as all exposure types were associated
245 with increased GDM risk, the high I^2 statistic may be due to the large number of participants and
246 narrow CIs of the primary studies³³. Given these findings, we did not assign a low rating to the
247 inconsistency domain of the GRADE criteria¹⁵.

248 The underlying mechanism of the association between preterm birth or SGA status and
249 subsequent GDM may be gestational malnutrition due to maternal malnutrition or placental
250 insufficiency³⁴. Findings from animal studies have suggested that malnutrition in utero is
251 associated with reduced β -cell counts, pancreas weight, and pancreatic insulin content³⁵.
252 According to the Barker foetal origin hypothesis, these foetal programming events may affect the
253 future risk of disease⁹. A review of epidemiological studies has suggested that LBW and preterm

254 birth are associated with the risk of type 2 diabetes in adulthood; a similar mechanism is possible
255 for GDM ³⁶.

256

257 **Strengths and Limitations**

258 A key strength of this review is that it is the first to provide a comprehensive summary of
259 evidence on the association between birth size or premature birth and future GDM risk. This
260 study followed the methodological recommendations presented in the Cochrane Handbook,
261 MOOSE guidelines, and GRADE criteria ¹³⁻¹⁵. Moreover, this study included previously
262 unpublished data and a large sample size.

263 Nevertheless, this study has some limitations. First, the included studies were old and
264 may not represent the current clinical practice. The definition of GDM proposed by the IADPSG
265 in 2010 has resulted in an increase in GDM prevalence ³⁷. For example, the prevalence of GDM
266 in the United States increased from 4.6% in 2006 to 8.2% in 2016 ³⁸. The median prevalence of
267 GDM in the control groups of the included studies was 2.9%. However, empirical evidence
268 suggests that relative effect measures are, on average, consistent across different settings; in the
269 present study, we estimated absolute risk differences separately for low-, moderate-, and high-
270 prevalence settings ³⁹. Second, 5 of 15 studies divided birth size and preterm birth categories into
271 three or more comparative groups, which could not be combined into two comparison groups of
272 interest. This lack of data required methodological adjustments, as described previously. Lastly,
273 this review only assessed certainty in estimates of association between prognostic factors and an
274 outcome. Future studies are required to determine whether these factors can help risk-stratify
275 pregnant women and improve the clinical management of GDM.

276

277 **Conclusions**

278 LBW, preterm birth, and SGA status may be prognostic factors for GDM. Clinicians should
279 consider the prevalence of GDM in their setting when considering maternal preterm birth or size
280 at birth in clinical decision-making. Due to the high likelihood of publication bias, the true
281 association between the exposures and outcome of interest may be weaker than that reported
282 herein. Future studies based on up-to-date diagnostic criteria, examining the dose–response
283 relationship between exposure severity and outcome, and comparing low- and middle-income
284 countries, are required to improve the certainty of evidence.

285

286 **ACKNOWLEDGMENTS**

287 We wish to thank Prof. Anne Monique Nuyt, Dr. Ariane Boivin, Dr. Prabha H. Andraweera, and
288 Dr. Shalem Leemaqz for kindly providing additional study data that were not included in the
289 original reports. We are also grateful to Dr. Kyosuke Kamijo and Dr. Ayako Shibata for
290 contributing a clinical perspective. We would like to thank Editage (www.editage.com) for
291 English language editing.

292

293 **COMPETING INTERESTS**

294 The authors have no conflicts of interest to declare.

295

296 **FUNDING**

297 The English editing fee was supported by the Systematic Review Peer Support Group (not-for-
298 profit organisation). The funders played no role in the design or conduct of the study; collection,

299 management, analysis, or interpretation of the data; preparation, review, or approval of the
300 manuscript; or decision to submit the manuscript for publication.

301

302 **CONTRIBUTION TO AUTHORSHIP**

303 YT is the guarantor of the review. YT had full access to all of the data in the study and takes
304 responsibility for the integrity of the data and the accuracy of the data analysis.

305 Study concept and design: YT, YK, MB, ST, MK, YY

306 Acquisition, analysis, or interpretation of data: All authors

307 Drafting of the manuscript: YT, YK, MB, ST

308 Critical revision of the manuscript for important intellectual content: MK, YM, YY

309 Statistical analysis: YT

310 Administrative, technical, or material support: YT, YK, MB, ST

311 Study supervision: MK, YM, YY

312

313 **REFERENCES**

- 314 1. Buchanan TA, Xiang AH, Page KA. Gestational diabetes mellitus: risks and management
315 during and after pregnancy. *Nat Rev Endocrinol.* 2012;8(11):639-49.
- 316 2. American Diabetes Association. 2. Classification and diagnosis of diabetes: standards of
317 medical care in diabetes—2019. *Diabetes care.* 2019;42(Supplement 1):S13-S28.
- 318 3. American Diabetes Association. 14. Management of diabetes in pregnancy: standards of
319 medical care in diabetes—2019. *Diabetes Care.* 2019;42(Supplement 1):S165-S72.
- 320 4. Kim C, Newton KM, Knopp RH. Gestational diabetes and the incidence of type 2
321 diabetes: a systematic review. *Diabetes Care.* 2002;25(10):1862-8.
- 322 5. Bellamy L, Casas J-P, Hingorani AD, Williams D. Type 2 diabetes mellitus after
323 gestational diabetes: a systematic review and meta-analysis. *The Lancet.* 2009;373(9677):1773-9.
- 324 6. Chawanpaiboon S, Vogel JP, Moller A-B, Lumbiganon P, Petzold M, Hogan D, et al.
325 Global, regional, and national estimates of levels of preterm birth in 2014: a systematic review
326 and modelling analysis. *The Lancet Global Health.* 2019;7(1):e37-e46.
- 327 7. United Nations Children’s Fund (UNICEF) WHO. UNICEF-WHO Low birthweight
328 estimates: Levels and trends 2000–2015. Geneva: World Health Organization; 2019.
- 329 8. Belbasis L, Savvidou MD, Kanu C, Evangelou E, Tzoulaki I. Birth weight in relation to
330 health and disease in later life: an umbrella review of systematic reviews and meta-analyses.
331 *BMC Med.* 2016;14(1):147.
- 332 9. Barker D. J. The fetal and infant origins of adult disease. *Bmj.* 1990;301(6761):1111.
- 333 10. Pettitt DJ, Jovanovic L. Low birth weight as a risk factor for gestational diabetes,
334 diabetes, and impaired glucose tolerance during pregnancy. *Diabetes Care.* 2007;30(Supplement
335 2):S147-S9.

- 336 11. Crusell M, Damm P, Hansen T, Pedersen O, Glumer C, Vaag A, et al. Ponderal index at
337 birth associates with later risk of gestational diabetes mellitus. Archives of gynecology and
338 obstetrics. 2017;296(2):249-56.
- 339 12. Andraweera PH, Dekker G, Leemaqz S, McCowan L, Myers J, Kenny L, et al. Effect of
340 Birth Weight and Early Pregnancy BMI on Risk for Pregnancy Complications. Obesity.
341 2019;27(2):237-44.
- 342 13. Higgins JPT, Thomas J, Chandler J, Cumpston M, Li T, Page MJ, et al. Cochrane
343 Handbook for Systematic Reviews of Interventions version 6.0
344 : Cochrane; 2019 [updated July 2019. Available from: www.training.cochrane.org/handbook.
345 .
- 346 14. Stroup DF, Berlin JA, Morton SC, Olkin I, Williamson GD, Rennie D, et al. Meta-
347 analysis of observational studies in epidemiology: a proposal for reporting. Meta-analysis Of
348 Observational Studies in Epidemiology (MOOSE) group. Jama. 2000;283(15):2008-12.
- 349 15. Foroutan F, Guyatt G, Zuk V, Vandvik PO, Alba AC, Mustafa R, et al. GRADE
350 Guidelines 28: Use of GRADE for the assessment of evidence about prognostic factors: rating
351 certainty in identification of groups of patients with different absolute risks. J Clin Epidemiol.
352 2020;121:62-70.
- 353 16. Sinha SK. Essential neonatal medicine / Sunil Sinha, Lawrence Miall, Luke Jardine.
354 Jardine L, Levene MIEnm, Miall L, editors. Chichester, West Sussex ; Hoboken, NJ: Wiley-
355 Blackwell; 2012.
- 356 17. ACOG Committee Opinion No 579: Definition of term pregnancy. Obstet Gynecol.
357 2013;122(5):1139-40.

- 358 18. World Health Organization. ICD-11 : international statistical classification of diseases
359 and related health problems : eleventh revision Geneva: World Health Organization; 2019
360 [updated 2019. Available from: <https://icd.who.int/browse11/l-m/en>.
- 361 19. American Diabetes Association. 2. Classification and Diagnosis of Diabetes. Diabetes
362 Care. 2016;39 Suppl 1:S13-22.
- 363 20. World Health Organization. Diagnostic criteria and classification of hyperglycaemia first
364 detected in pregnancy. World Health Organization; 2013.
- 365 21. Blumer I, Hadar E, Hadden DR, Jovanović L, Mestman JH, Murad MH, et al. Diabetes
366 and pregnancy: an endocrine society clinical practice guideline. J Clin Endocrinol Metab.
367 2013;98(11):4227-49.
- 368 22. International Association of D, Pregnancy Study Groups Consensus P, Metzger BE,
369 Gabbe SG, Persson B, Buchanan TA, et al. International association of diabetes and pregnancy
370 study groups recommendations on the diagnosis and classification of hyperglycemia in
371 pregnancy. Diabetes Care. 2010;33(3):676-82.
- 372 23. Hayden JA, van der Windt DA, Cartwright JL, Côté P, Bombardier C. Assessing bias in
373 studies of prognostic factors. Ann Intern Med. 2013;158(4):280-6.
- 374 24. Beauregard JL, Drews-Botsch C, Sales JM, Flanders WD, Kramer MR. Does
375 Socioeconomic Status Modify the Association Between Preterm Birth and Children's Early
376 Cognitive Ability and Kindergarten Academic Achievement in the United States? Am J
377 Epidemiol. 2018;187(8):1704-13.
- 378 25. Gestational Hypertension and Preeclampsia: ACOG Practice Bulletin, Number 222.
379 Obstetrics & Gynecology. 2020;135(6):e237-e60.

- 380 26. Zhu Y, Zhang C. Prevalence of Gestational Diabetes and Risk of Progression to Type 2
381 Diabetes: a Global Perspective. *Current diabetes reports*. 2016;16(1):7-.
- 382 27. Egger M, Smith GD, Schneider M, Minder C. Bias in meta-analysis detected by a simple,
383 graphical test. *Bmj*. 1997;315(7109):629-34.
- 384 28. Boivin A, Luo Z-C, Audibert F, Mâsse B, Lefebvre F, Tessier R, et al. Pregnancy
385 complications among women born preterm. *CMAJ*. 2012;184(16):1777-84.
- 386 29. Solomon CG, Willett WC, Carey VJ, Rich-Edwards J, Hunter DJ, Colditz GA, et al. A
387 prospective study of pregravid determinants of gestational diabetes mellitus. *Jama*.
388 1997;278(13):1078-83.
- 389 30. National Collaborating Centre for Ws, Children's H. National Institute for Health and
390 Care Excellence: Clinical Guidelines. *Diabetes in Pregnancy: Management of Diabetes and Its*
391 *Complications from Preconception to the Postnatal Period*. London: National Institute for Health
392 and Care Excellence (UK)
393 Copyright © 2015 National Collaborating Centre for Women's and Children's Health.; 2015.
- 394 31. Artzi NS, Shilo S, Hadar E, Rossman H, Barbash-Hazan S, Ben-Haroush A, et al.
395 Prediction of gestational diabetes based on nationwide electronic health records. *Nat Med*.
396 2020;26(1):71-6.
- 397 32. Boccia S, Rothman KJ, Panic N, Flacco ME, Rosso A, Pastorino R, et al. Registration
398 practices for observational studies on ClinicalTrials.gov indicated low adherence. *J Clin*
399 *Epidemiol*. 2016;70:176-82.
- 400 33. Rucker G, Schwarzer G, Carpenter JR, Schumacher M. Undue reliance on $I(2)$ in
401 assessing heterogeneity may mislead. *BMC Med Res Methodol*. 2008;8:79.

- 402 34. Plows JF, Stanley JL, Baker PN, Reynolds CM, Vickers MH. The Pathophysiology of
403 Gestational Diabetes Mellitus. *Int J Mol Sci.* 2018;19(11).
- 404 35. McMillen IC, Robinson JS. Developmental origins of the metabolic syndrome: prediction,
405 plasticity, and programming. *Physiol Rev.* 2005;85(2):571-633.
- 406 36. Whincup PH, Kaye SJ, Owen CG, Huxley R, Cook DG, Anazawa S, et al. Birth weight
407 and risk of type 2 diabetes: a systematic review. *Jama.* 2008;300(24):2886-97.
- 408 37. Cundy T, Ackermann E, Ryan EA. Gestational diabetes: new criteria may triple the
409 prevalence but effect on outcomes is unclear. *Bmj.* 2014;348:g1567.
- 410 38. Zhou TAO, Sun D, Li X, Heianza Y, Nisa H, Hu G, et al. Prevalence and Trends in
411 Gestational Diabetes Mellitus among Women in the United States, 2006–2016. *Diabetes.*
412 2018;67(Supplement 1):121-OR.
- 413 39. Deeks JJ. Issues in the selection of a summary statistic for meta-analysis of clinical trials
414 with binary outcomes. *Stat Med.* 2002;21(11):1575-600.

415 **FIGURE LEGENDS**

416

417 **Figure 1. PRISMA flow diagram of study eligibility**

418 Duplicate studies are displayed as a single study.

419

420 **Figure 2. Risk of gestational diabetes among women born preterm, with low birth weight, 421 or small-for-gestational-age status**

422 Effect size (ES, represented as adjusted odds ratios); CI, confidence interval. ES was determined
423 using the random-effects model weighted by the inverse of the variance estimate. Squares
424 represent ES, with marker size reflecting the statistical weight of the study, obtained using

425 random-effects meta-analysis; horizontal lines represent 95% CIs; diamonds represent the
426 subgroup and overall odds ratios and 95% CIs for gestational diabetes.

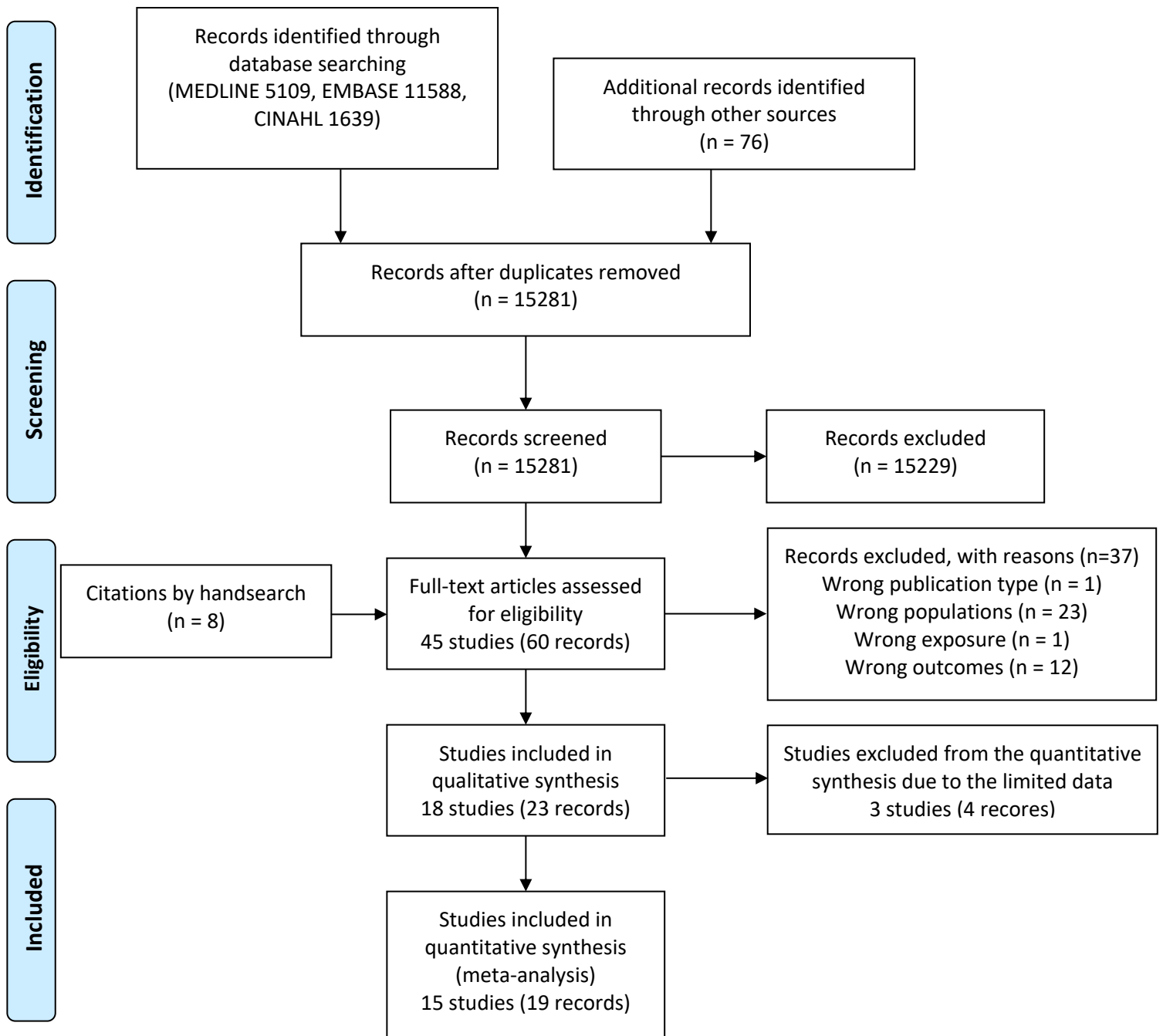
427

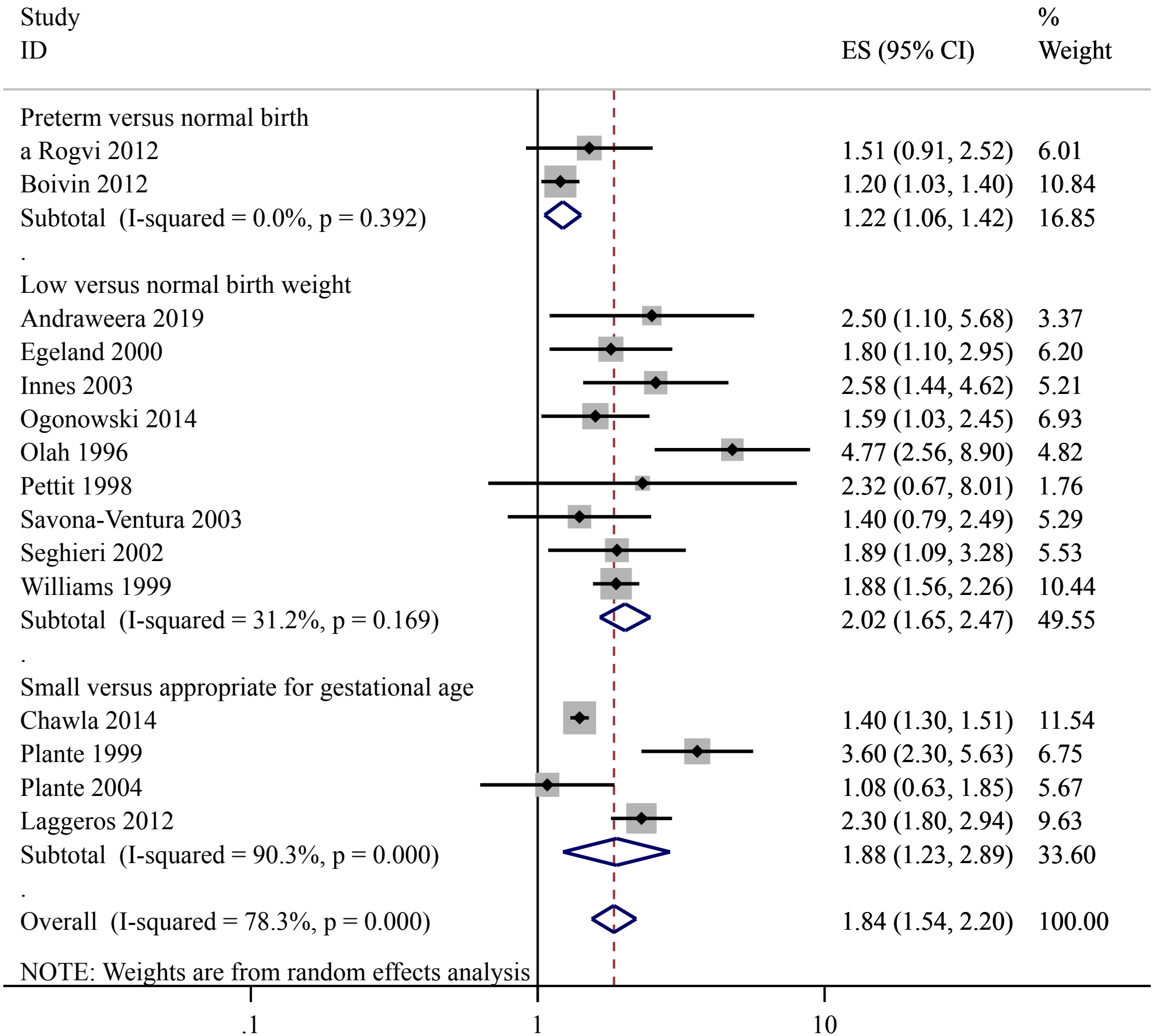
428 **Figure 3. Funnel plot for the evaluation of publication bias**

429 The solid vertical line represents the summary estimate of the association between preterm birth,
430 low birth weight, and small for gestational age status and gestational diabetes (using random-
431 effects meta-analysis). A significant publication bias was detected ($p = 0.030$ for Egger's test).

432 The funnel plot shows asymmetry, which indicates publication bias.

433





Funnel plot with pseudo 95% confidence limits

