

Abstract: 250/250
Introduction: 548/1500
Article: 3477/3500
Tables: 2
Figures: 3
References: 57

Polygenic risk for psychiatric disorder reveals distinct association profiles across social behaviour in the general population

Running title: Polygenic psychiatric risk and social behaviour

Fenja Schlag¹, Andrea Allegrini^{2,3}, Jan Buitelaar^{4,5,6}, Ellen Verhoef¹, Marjolein van Donkelaar¹, Robert Plomin², Kaili Rimfeld², Simon Edward Fisher^{1,4}, Beate St Pourcain^{1,4,7,8}

1. Language and Genetics, MPI for Psycholinguistics, Wundtlaan 1, 6525 XD Nijmegen, The Netherlands
2. Social, Genetic and Developmental Psychiatry Centre, Institute of Psychiatry, Psychology & Neuroscience, King's College London, Memory Ln, Camberwell, London SE5 8AF, London, UK
3. Psychology and Language Sciences, University College London, 26 Bedford Way, Bloomsbury, London WC1H 0AP, London, UK
4. Donders Institute for Brain, Cognition and Behaviour, Radboud University, Kapittelweg 29
6525 EN Nijmegen, The Netherlands
5. Karakter Child and Adolescent Psychiatry University Centre, Reinier Postlaan 12, 6525 GC Nijmegen, The Netherlands
6. Department of Cognitive Neuroscience, Radboud University Medical Center, Geert Grooteplein 21, 6525 EZ Nijmegen, The Netherlands
7. MRC Integrative Epidemiology Unit, University of Bristol, Oakfield House, Oakfield Grove, Bristol, BS8 2BN, UK
8. Population Health Sciences, University of Bristol, 5 Tyndall Avenue, Bristol, BS8 1UD, UK

Corresponding authors: Fenja Schlag and Beate St Pourcain

Postal address: Max Planck Institute for Psycholinguistics, Wundtlaan 1, 6525 XD Nijmegen, the Netherlands

e-mail Fenja Schlag: fenja.schlag@mpi.nl / Phone: +31 24 3521946

e-mail Beate St Pourcain: beate.stpourcain@mpi.nl / Phone: +31 24 3521964 / Fax: +31 24 3521213

e-mail Andrea Allegrini: andrea.allegrini@kcl.ac.uk; e-mail Jan Buitelaar:

jan.buitelaar@radboudumc.nl; e-mail Ellen Verhoef: ellen.verhoef@mpi.nl; email Marjolein

van Donkelaar: marjolein.vandonkelaar@mpi.nl; e-mail Robert Plomin:

robert.plomin@kcl.ac.uk; e-mail Kaili Rimfeld: kaili.rimfeld@kcl.ac.uk; e-mail Simon Fisher:

simon.fisher@mpi.nl

Requests for reprints should be sent to the corresponding authors.

Abstract

Many complex psychiatric disorders are characterised by a spectrum of social difficulties. These symptoms lie on a behavioural dimension that is shared with social behaviour in the general population, with substantial contributions of genetic factors. However, shared genetic links may vary across psychiatric disorders and social symptoms. Here, we systematically investigate heterogeneity in shared genetic liabilities with attention-deficit/hyperactivity disorder (ADHD), autism spectrum disorders (ASD), bipolar disorder (BP), major depression (MD) and schizophrenia, across a spectrum of different social symptoms. Specifically, longitudinally assessed low-prosociality and peer-problem scores in two UK population-based/community-based cohorts (ALSPAC, $N \leq 6174$, 4-17 years; TEDS, $N \leq 7112$, 4-16 years; parent- and teacher-reports) were regressed on polygenic risk scores for ADHD, ASD, BP, MD, and schizophrenia, as informed by genome-wide summary statistics from large consortia, using negative binomial regression models. Across ALSPAC and TEDS, we replicated univariate polygenic associations between social behaviour and risk for ADHD, MD, and schizophrenia. Modelling univariate genetic effects across both cohorts with random-effect meta-regression revealed evidence for polygenic links between social behaviour and ADHD, ASD, MD, and schizophrenia risk, but not BP, where differences in age, reporter and social trait captured 45-88% in univariate effect variation. For ADHD, MD, and ASD polygenic risk, we identified stronger association with peer problems than low prosociality, while schizophrenia polygenic risk was solely associated with low prosociality. The identified association profiles suggest marked differences in the social genetic architecture underlying different psychiatric disorders when investigating population-based social symptoms across 13 years of child and adolescent development.

Introduction

Many heritable psychiatric disorders such as attention-deficit/hyperactivity disorder (ADHD), autism spectrum disorders (ASD), bipolar disorder (BP), major depression (MD) or schizophrenia are characterised by social-behavioural difficulties. In ADHD, these predominantly include peer problems¹, while ASD is characterised by deficits in social interaction and communication². Individuals with BP can suffer from social withdrawal and poor social functioning³, and, similarly, those with MD may show social withdrawal and disrupted social processing⁴. Individuals with schizophrenia often have poor social cognition and lack social interest⁵.

The underlying social-behavioural difficulties can be diverse. They may reflect a lack of positive interactions involving low prosocial behaviour reflected in limited helping, sharing and cooperating with others⁶. Alternatively, peer problems describe problematic interactions such as social withdrawal, being bullied, and the inability to get along with others⁷. Moreover, social symptoms change throughout development and across different social environments⁸. Therefore, social-behavioural difficulties may reflect different problems depending on developmental stage, social environment as reported by teachers or parents, and different types of skill sets. The aetiology of social problems in psychiatric disorders has, however, been little characterised.

Social behaviour is known to be heritable. Twin studies have reported heritability estimates of 0.38 to 0.76^{9–11} for prosocial behaviour and 0.41 to 0.83^{9,12} for peer problems, with variation across developmental stages^{11,12}, reporters^{9,10} and social traits⁹ in community-based samples. Heritability estimates as captured by single-nucleotide polymorphisms (SNPs; SNP- h^2) range between 0.02 to 0.27 for parent-rated peer problems in the general population, with larger estimates during adolescence compared to childhood¹² suggesting developmental changes in genetic architectures.

One of the grand challenges in psychiatric genetics is to understand how common genetic risk, can manifest as a spectrum of diverse symptoms. Large genome-wide efforts in psychiatric genetics have demonstrated the SNP- h^2 of ADHD (0.22)¹³, ASD (0.11)¹⁴, BP (0.18)¹⁵, MD (0.09)¹⁶ and schizophrenia (0.22; Supplementary Table 1)¹⁷. Social-behavioural difficulties in psychiatric disorder can be understood as the extreme end of a behavioural dimension that is shared with social traits in the general population¹⁸. These may be captured by polygenic links that differ developmentally, by different reporters and across different social symptoms, potentially reflecting distinct psychopathologies. A systematic comparison of social-behavioural difficulties, especially across neurodevelopmental disorders has, however, not yet been carried out.

In this open science framework registered study¹⁹, we systematically investigate genetic links between psychiatric disorders and child and adolescent social behaviour in the general population, studying the heterogeneity in polygenic associations across different ages, reporters and social traits, via a two-stage approach:

Within stage 1, we assess the relationship between polygenic risk scores for ADHD, ASD, BP, MD, and schizophrenia risk, as studied by large clinical consortia, and social-behavioural scores for low prosociality and peer problems between the ages of 7 and 17 years, as reported by parents or teachers in the population-based UK Avon Longitudinal Study for Parents and Children (ALSPAC)²⁰, and follow up findings with matching scores (4-16 years; parent- and teacher-reports) in the UK community-based Twins Early Development Study (TEDS)²¹.

Within stage 2, we model differences in polygenic associations as predicted by age-, reporter-, and trait-specific social-behavioural symptoms using a random-effects meta-regression approach, combining univariate findings from ALSPAC and TEDS, and identify and compare social-behavioural association patterns for each disorder.

Samples and methods

Genome-wide summary statistics for psychiatric disorder

We studied genome-wide summary statistics for five psychiatric disorders as published by the Psychiatric Genomic Consortium (PGC), the Danish Lundbeck Foundation Initiative for Integrative Psychiatric Research (iPSYCH) and/or the UK Biobank (UKBB): ADHD-PGC/iPSYCH¹³, ASD-PGC/iPSYCH¹⁴, BP-PGC¹⁵, MD-PGC/UKBB¹⁶, and schizophrenia-PGC¹⁷. Cohort details including ancestry, size, imputation reference panel, symptoms and age-of-onset of the disorder are described in the Supplement (Supplementary Information, Supplementary Table 1).

Social behaviour in the general population

ALSPAC is a UK population-based longitudinal pregnancy-ascertained birth cohort with birth dates between 1991 and 1992^{20,22}. Ethical approval for the study was obtained from the ALSPAC Ethics and Law Committee and the Local Research Ethics Committees. Consent for biological samples has been collected in accordance with the Human Tissue Act (2004). Informed consent for the use of data collected via questionnaires and clinics was obtained from participants following the recommendations of the ALSPAC Ethics and Law Committee at the time (Supplementary Information).

TEDS is a community-based longitudinal study of >10,000 twin pairs representative of England and Wales, recruited from 1994 to 1996 births²¹. Ethical approval for the study was granted by King's College London's ethics committee for the Institute of Psychiatry, Psychology and Neuroscience (05.Q0706/228), and written informed consent was given by the parents prior to data collection.

Phenotype information: Prosocial behaviour and peer problems were assessed in ALSPAC and TEDS children (Supplementary Information, Table 1) using standardised behavioural screening questionnaires. Both, prosocial behaviour (here recoded as low-prosociality scores) and peer problems were assessed using subscales of the Strengths-and-Difficulties questionnaire (SDQ²³), based on parent- and teacher-reports at the same ages. In ALSPAC, parent-reported (predominantly mother-reported) behaviour was measured at the ages of 7, 10, 12, 13 and 17 years and in TEDS at the ages of 4, 7, 9, 11, 14, and 16 (prosocial scores only) years. In addition, teacher reports were obtained at the ages of 8 and 11 years in ALSPAC and at the ages of 9, 12, and 14 years in TEDS. Both scores are phenotypically modestly to moderately correlated with each other (Supplementary Tables 2,3).

Table 1 here

Univariate polygenic scoring analyses in ALSPAC and TEDS

Polygenic scoring analyses: Consistent with current guidelines²⁴, we constructed polygenic risk scores (PRS) for each disorder (ADHD, ASD, BP, MD and schizophrenia) within ALSPAC and TED using a clumping and thresholding approach (risk-variant selection thresholds $0.001 \leq P_T < 1$), based on high-quality genome-wide imputed SNPs (Supplementary Information).

Within ALSPAC, we studied unrelated children and adolescents (genomic relatedness < 0.125). We regressed untransformed social-behavioural scores (peer problem or low prosociality) on Z-standardised PRS using a negative binomial model, adjusting for covariate effects of sex, age, and the first two PCs (R:MASS; Supplementary Information). Within TEDS, we analysed pairs of dizygotic twins and a single twin of each monozygotic pair. PRS association analyses were carried out using a multi-level negative binomial regression approach (R:lme4, v.1.1-26²⁵), with a random intercept to adjust for family relatedness, and fixed effects for PRS adjusting for covariate effects of sex, age, the first ten PCs, genotyping-batch, and genotyping-chip effects. For both models the negative binomial

and multi-level negative binomial model, beta coefficients indicate the change in log counts of social score by one SD change in PRS (PRS effects). We tested the predictive ability of PRS using Δ McFadden's R^2 (Supplementary Information)²⁶.

Multiple-testing correction: Using Matrix Spectral Decomposition (matSpD)²⁷, we accounted for 14 interrelated social-behavioural scores (Supplementary Table 2) and five psychiatric disorders in ALSPAC by identifying an effective number of 10 independent variables, and adjusting the multiple-testing burden of all univariate PRS analyses to $0.05/(10 \times 5) = 0.001$. For follow-up analyses in TEDS, with an effective number of 12 independent variables, the multiple-testing burden under a one-sided test was adjusted to $0.1/(12 \times 5) = 0.0017$, accounting for 15 interrelated scores and five psychiatric disorders (Supplementary Table 3).

Power analyses: We estimated the power to detect PRS effects in the discovery cohort (ALSPAC) using the R software package *avengeme*²⁸ (Supplementary Information), assessing the influence of trait- or disorder-specific $\text{SNP-}h^2$ and trait-disorder covariance.

Meta-regression of polygenic effects

Meta-regression models: For each disorder, we combined univariate PRS estimates for SDQ subscales across ALSPAC and TEDS using a random-effect meta-regression model (R:metafor, v.2.1-0²⁹, Supplementary Information). In brief, we systematically assessed whether heterogeneity in PRS association effects (based for simplicity on a representative PRS risk variant selection threshold of $P_T \leq 0.1$) can be attributed to differences in social behaviour explained by the median age of assessment, reporter (parent vs teacher), and SDQ-based social trait (low prosociality versus peer problems). For each disorder, we fitted a full model including a random intercept accounting for repeated measures (nested within cohort) as well as fixed effects for age-, reporter-, trait- and cohort-specific effects. The most parsimonious model was identified by dropping successively fixed effects from the model (likelihood-ratio test at $P > 0.05$) and assessing residual heterogeneity (Cochran's Q test, Supplementary Information). The inter-relatedness of PRS association effects across SDQ-based social scores within each cohort was accounted for by constructing a composite variance covariance matrix analogous to models accounting for correlated phylogenetic histories³⁰.

Multiple-testing correction: A threshold of $P \leq 0.01$ ($0.05/\text{five disorders}$) was applied.

Results

Stage 1: Univariate association analyses

Discovery analyses in ALSPAC: We assessed the univariate association between each of the 14 population-based social-behavioural scores in ALSPAC, including low-prosociality and peer problem scores between the ages of 7 and 17 years, as reported by parents or teachers, and five disorder-specific PRS (Supplementary Table 1, ADHD, ASD, BP, MD, and schizophrenia; 70 analyses; multiple-testing threshold of $P \leq 0.001$). All social scores were skewed, with most children showing little difficulties in prosocial behaviour and peer interactions (Table 1). Consequently, we assessed genetic associations with a negative binomial regression model, given the better fit of a count data model compared to a linear model (Supplementary Table 4). PRS effects were fitted across multiple risk variant selection thresholds ($0.001 \leq P_T < 1$, Supplementary Tables 5,6, Figure 1), but are here, for simplicity, reported at $P_T \leq 0.1$.

Many social-behavioural scores were associated with polygenic risk for ADHD, MD and schizophrenia. For ADHD-PRS, the strongest association was identified for teacher-reported peer problems at the age of 11 years ($\beta_{\text{ADHD}_{11Y}}(\text{SE})=0.10(0.025)$, $\Delta\text{McFadden's-}R^2=0.0013$, $P=2.5 \times 10^{-5}$; Figure1a,b). MD-PRS was most strongly associated with parent-reported peer problems scores at the age of 13 years ($\beta_{\text{MD}_{13Y}}(\text{SE})=0.12(0.019)$, $\Delta\text{McFadden's-}R^2=0.0026$, $P=2.6 \times 10^{-10}$; Figure1g,h). Associations between schizophrenia-PRS and social traits were strongest for teacher-rated low-prosociality scores at 11 years ($\beta_{\text{SCZ}_{11Y}}(\text{SE})=0.07(0.019)$, $\Delta\text{McFadden's-}R^2=8.0 \times 10^{-4}$, $P=2.2 \times 10^{-4}$; Figure1i,j). For ASD-PRS, no univariate association with social symptoms at $P_T \leq 0.1$ passed the multiple-testing threshold. However, at less stringent P_T thresholds, association with parent-reported low prosociality at the age of 7 years was present (for example at $P_T < 0.5$, $\beta_{\text{ASD}_{7Y}}(\text{SE})=0.045(0.013)$, $\Delta\text{McFadden's-}R^2=5.8 \times 10^{-4}$, $P=6.6 \times 10^{-4}$; Figure1c,d) and meta-analysing univariate ASD-PRS effects across $P_T \leq 0.1$ yielded further support for association (data not shown). There was little evidence for association between BP-PRS and any of the studied social measures (Figure1e,f).

Power analyses showed that across all studied psychiatric conditions, our study had sufficient power under the assumption of fixed trait-disorder covariance (equivalent to the $\text{SNP-}h^2$ of the disorder; Supplementary Table 7; Supplementary Information; Supplementary Figures 1,2; dotted lines). Once data-driven covariance patterns and, thus, trait architectures were considered, power curves followed observed associations (Supplementary Figures 1,2; solid lines), largely, independent of trait $\text{SNP-}h^2$ (Supplementary Table 8). Only for polygenic BP and polygenic ASD risk (except for social scores at age 7 years) the power was $<80\%$ (at $P_T < 0.1$), irrespective of the studied social symptoms, consistent with the lack in univariate associations.

Follow-up analyses in TEDS: Subsequently, we studied the univariate association of polygenic risk for ADHD, ASD, BP, MD, and schizophrenia (at $0.001 \leq P_T < 1$) with 15 ALSPAC-matching community-based social-behavioural scores in TEDS. Parent- and teacher-reported low-prosociality and peer-problem scores were longitudinally assessed between 4 and 16 years, showing skewed distributions (Table 1, Supplementary Table 9). At $P_T \leq 0.1$, we replicated evidence for association between social-behavioural scores and polygenic risk for ADHD, MD and schizophrenia (75 analyses; Figure 2, Supplementary Tables 10,11; multiple-testing threshold of $P \leq 0.0017$). In addition, we observed evidence for association between ASD-PRS and peer problems that was strongest in parent-reported scores at the age of 11 years ($\beta_{\text{ASD}_{11Y}}(\text{SE})=0.093(0.018)$, $\Delta\text{McFadden's-}R^2=0.0015$, $P=2.7 \times 10^{-7}$; Figure2g,h). As observed in ALSPAC, we did not find association between BP-PRS and any of the studied social measures in TEDS (Figure2e,f).

Figure1,2 here

Stage 2: Meta-regression of polygenic association signals in ALSPAC and TEDS

For each disorder, we combined univariate polygenic PRS estimates for the 29 SDQ-based social scores from both ALSPAC and TEDS, using a random-effects meta-regression approach (5 analyses, multiple-testing threshold $P \leq 0.01$). Specifically, we modelled heterogeneity in PRS effect estimates as predicted by age-, reporter-, and trait-specific differences in social behaviour, captured by the fixed-effect meta-regression estimates θ . For each disorder, we first fitted a full meta-regression model and, subsequently, dropped predictors to identify the most parsimonious model based on likelihood-ratio tests (Supplementary Tables 12,13, Supplementary Figures 3-7).

Meta-regression analyses provided evidence for association between social behaviour and PRS for ADHD, ASD, MD, and schizophrenia, but not BP. Across disorders, polygenic effects varied with age, reporter, and, especially, social trait (Table 2). As there was little evidence for cohort-specific fixed effects, these effects were omitted from the most parsimonious models throughout. For ADHD-PRS, the most parsimonious meta-regression model provided evidence for an increase in PRS effects with age ($\theta_{\text{age}(Y)}(\text{SE})=0.0025(8.9 \times 10^{-4})$, $P=0.0042$), teacher-reported scores ($\theta_{\text{teacher_report}}(\text{SE})=0.044(0.0085)$, $P=2.5 \times 10^{-7}$) and peer problems ($\theta_{\text{peer_problems}}(\text{SE})=0.03(0.0089)$, $P=7.3 \times 10^{-4}$). Likewise, the meta-regression model for MD-PRS showed an increase in PRS effect with age ($\theta_{\text{age}(Y)}(\text{SE})=0.0035(9.5 \times 10^{-4})$, $P=1.9 \times 10^{-4}$) and peer problems ($\theta_{\text{peer_problems}}(\text{SE})=0.048(0.0093)$, $P=2.8 \times 10^{-7}$). In contrast

to ADHD and MD, the most parsimonious model for schizophrenia revealed a decrease in PRS effects for peer problems ($\theta_{\text{peer_problems}}(\text{SE})=-0.027(0.0094)$, $P=0.0033$). As there was a trend for a small positive age-effect that captured a considerable proportion of effect heterogeneity, this effect was retained in the model. For ASD-PRS, we observed an increase in PRS effect for peer problems ($\theta_{\text{peer_problems}}(\text{SE})=0.037(0.0083)$, $P=7.9 \times 10^{-6}$) consistent with meta-analytic but not univariate analyses in ALSPAC. The most parsimonious model based on BP-PRS revealed little evidence for association with any social symptoms.

Predicted heterogeneity in PRS effects for ADHD, ASD, MD and (Figure 3; Supplementary Figures 3-7) can be summarised as follows: Meta-analytically predicted PRS effects ($\hat{\beta}$) indicate an association of ADHD-PRS with low prosociality based on teacher-reports ($\hat{\beta}_{\text{ADHD_7Y}}(\text{SE})=0.047(0.0086)$ to $\hat{\beta}_{\text{ADHD_12Y}}(\text{SE})=0.058(0.0088)$) and for parent-reports only from the age of 11 years onwards ($\hat{\beta}_{\text{ADHD_11Y}}(\text{SE})=0.013(0.0066)$ to $\hat{\beta}_{\text{ADHD_17Y}}(\text{SE})=0.028(0.0093)$); ADHD-PRS are also associated with peer problems based on both parent-reports ($\hat{\beta}_{\text{ADHD_4Y}}(\text{SE})=0.025(0.0094)$ to $\hat{\beta}_{\text{ADHD_17Y}}(\text{SE})=0.058(0.012)$) and teacher-reports ($\hat{\beta}_{\text{ADHD_7Y}}(\text{SE})=0.077(0.011)$ to $\hat{\beta}_{\text{ADHD_12Y}}=0.088(0.012)$), but not parent-reported low prosociality between the ages of 4 and 10 years ($\hat{\beta}_{\text{ADHD_4Y}}(\text{SE})=-0.0049(0.0077)$ to $\hat{\beta}_{\text{ADHD_10Y}}(\text{SE})=0.0094(0.0063)$). Polygenic association with MD-PRS increased with age and was larger for peer problems ($\hat{\beta}_{\text{MD_4Y}}(\text{SE})=0.044(0.0097)$ to $\hat{\beta}_{\text{MD_17Y}}(\text{SE})=0.090(0.012)$) than low prosociality ($\hat{\beta}_{\text{MD_4Y}}(\text{SE})=-0.0033(0.0078)$ to $\hat{\beta}_{\text{MD_17Y}}(\text{SE})=0.042(0.0095)$) with evidence for an association with low prosociality only from the age of 9 years onwards ($\hat{\beta}_{\text{MD_9Y}}(\text{SE})=0.014(0.0061)$). In contrast, association effects of schizophrenia-PRS risk with social behaviour were only found for low prosociality ($\hat{\beta}_{\text{SCZ_4Y}}(\text{SE})=0.024(0.0079)$ to $\hat{\beta}_{\text{SCZ_17Y}}(\text{SE})=0.047(0.0096)$), but not peer problems ($\hat{\beta}_{\text{SCZ_4Y}}(\text{SE})=-0.0036(0.0098)$ to $\hat{\beta}_{\text{SCZ_17Y}}(\text{SE})=0.019(0.0120)$). ASD-PRS association effects were stable across age, but larger for peer problems ($\hat{\beta}_{\text{ASD}}(\text{SE})=0.058(0.0070)$) than low prosociality ($\hat{\beta}_{\text{ASD}}(\text{SE})=0.021(0.0063)$).

Together, these findings are consistent with distinct association profiles for social behaviour across psychiatric conditions.

Table 2, Figure 3here

Discussion

Investigating polygenic links between risk for psychiatric disorder and population-based social behaviour, this study identified marked differences in genetic associations between psychiatric disorders and a spectrum of social-behavioural difficulties. We observed robust evidence for shared genetic influences between child and adolescent social difficulties and polygenic risk for ADHD, MD and schizophrenia across two large UK population-based cohorts in a univariate association approach. Combining univariate findings in a meta-regression approach, we identified further evidence for association between ASD risk and social difficulties. Here, we showed that the identified meta-analytic association profiles systematically varied with age-, reporter- and trait-specific social symptoms across disorders. These findings suggest a diverse genetic landscape of social phenotypes that is differentially shared with psychiatric disorder. As such, our results refine previous research demonstrating genetic overlap with psychiatric risk for social behaviour-related traits such as emotion recognition in childhood and adolescence^{31,32}, self-reported empathy³³, loneliness³⁴, and sociability³⁵ in adults.

We observed age-specific effects for ADHD, MD and schizophrenia risk indicating polygenic links with social behaviour that increased from childhood to adolescence, detectable at 4 years of age onwards. These findings confirm previously reported developmental changes in the genetic overlap of schizophrenia risk with social communication³⁶. While a developmental increase in genetic association effects is in line with the typical onset of MD and schizophrenia during adolescence and adult life^{37,38}, our findings may link to subthreshold social difficulties preceding clinical diagnosis^{39,40} or early-onset cases, which are thought to convey more severe symptoms^{41,42}. The age-specific increase in association between risk for ADHD, a typical childhood-onset disorder, and scores for both low prosociality and peer problems during the course of development suggests that the genetic link with social behaviour may progress into adulthood⁴³.

For ADHD risk only, we identified reporter-specific genetic effects, with stronger genetic links for teacher-reported compared to parent-reported social behaviour. Social behaviour at school as reported by teachers evaluates rule-oriented behaviour⁴⁴, but also adequate peer-peer interactions among children of the same age. Therefore, school environments may, specifically, expose behavioural difficulties of children with ADHD. Problems may arise due to children's high levels of distractibility but also their disruptive/oppositional behaviours, consistent with teacher-reported, but not parent-reported oppositional defiant disorder symptoms predicting less prosocial behaviour¹.

Across disorders, we found evidence for social trait-specific effects shaping polygenic links with ADHD, ASD, MD and schizophrenia risk. The sole association of schizophrenia

risk with low prosociality, but not peer problems, may reflect specific impairments in social cognition and a lack of social interest and empathy in psychotic disorders⁵. In contrast, the stronger genetic association of ADHD, ASD, and MD risk with peer problems, compared to prosocial scores, may reflect genetic links with socially disruptive behaviours and poor social skills, potentially related to difficulties with communication, emotion regulation, executive functioning, and/or social isolation^{4,45,46}. The similarity in polygenic trait effects for ADHD, ASD, and MD is in line with previously reported similarities in social symptoms at the phenotypic level^{47–49} and genetic correlations between these conditions⁵⁰.

The absence of genetic interrelationships with BP is consistent with previous reports^{33,35,51} and either reflects lack of power or suggests that, genetically, social symptoms may not be directly involved in the genetic aetiology of the disorder.

Given the robustness of univariate polygenic signals across two population-based/community-based cohorts, our findings suggest that the identified association profiles capture differences in genetic covariance between social traits and disorders, reflecting differences in underlying aetiological mechanisms: (1) The discordant social trait-specific association pattern for schizophrenia compared to ADHD, ASD, and MD risk suggests that the aetiological spectrum of social difficulties is distinct across disorders, supporting targeted treatment strategies for psychotic versus non-psychotic disorders⁵². (2) Teacher-specific effects shaping polygenic links with ADHD risk may reflect a subtype of social-behavioural problems within school environments that is influenced by genetic factors unique to ADHD, highlighting the importance of school-related interventions. A lack of power to detect reporter-specific effects for other disorders is a less likely explanation, despite known bias affecting parent-reported measures⁵³, given association of parent-reported measures with other psychiatric PRS (Supplementary Figures 1-2). (3) Age-specific changes in genetic associations involving ADHD, MD, and schizophrenia risk, but not ASD risk, are likely to reflect the change in overlap between the largely stable symptom spectrum in disorder and developmentally highly variable social problems in the general population. These findings suggest that social-behavioural symptoms during later adolescence most strongly contribute to ADHD, MD, and schizophrenia genetic architectures underscoring the need for early-life interventions. Conversely, the lack of age-specific changes in the association of ASD risk with social behaviour suggests that these polygenic links involve social problems that already emerge before or at the age of 4 years and remain developmentally stable, consistent with the early social core deficits in ASD². These findings contrast with the developmental decline in the genetic overlap of ASD risk with social communication that was previously reported³⁶, possibly reflecting differences in social-behavioural versus -

communication-related skills, where the latter rely more strongly on social cognition, and verbal and non-verbal communication⁷.

Our study has several strengths and limitations: We investigated two social traits as reported by parents and teachers across 13 years of child and adolescent development, studying polygenic links with multiple psychiatric conditions, using a count data approach. We robustly identified evidence for genetic association in two large UK population-based/community-based cohorts, and systematically modelled heterogeneity in polygenic estimates using a random-effects meta-regression approach. However, consistent with other PRS analyses³⁶, effect sizes were small, and due to different sets of risk-increasing alleles analysed, a direct comparison of PRS effect size across disorders is not meaningful here. We exclusively investigated social symptoms with the SDQ. Different instruments, including those assessing reciprocal social interactions, might capture additional symptoms and broaden the interpretation of social difficulties in psychiatric disorders, in particular for ASD risk. Furthermore, polygenic signals might be biased by population-based phenomena, such as dynastic effects and non-random mating⁵⁴, but also non-random missingness linked to socio-economic status^{55,56}. However, this is less likely as bias would similarly affect uniformly ascertained SDQ scores, resulting in homogeneous and not heterogeneous genetic association profiles. Finally, misclassification of psychiatric disorder and phenotypic heterogeneity may increase genetic correlations across a spectrum of social symptoms⁵⁷. Thus, further studies should refine our findings by replicating across broadly defined social phenotypes in European and non-European cohorts to promote the translation into precision medicine⁵².

In conclusion, our findings reveal marked differences in the social genetic architecture underlying different psychiatric disorders and demonstrate that social symptoms represent a heterogeneous spectrum of related endophenotypes.

Acknowledgements

We are extremely grateful to all the families who took part in this study, the midwives for their help in recruiting them, and the whole ALSPAC team, which includes interviewers, computer and laboratory technicians, clerical workers, research scientists, volunteers, managers, receptionists and nurses. The UK Medical Research Council and Wellcome (Grant ref: 217065/Z/19/Z) and the University of Bristol provide core support for ALSPAC. This publication is the work of the authors and FS and BSTP will serve as guarantors for the contents of this paper. A comprehensive list of grants funding is available on the ALSPAC website (<http://www.bristol.ac.uk/alspac/external/documents/grant-acknowledgements.pdf>).

GWAS data was generated by Sample Logistics and Genotyping Facilities at Wellcome Sanger Institute and LabCorp (Laboratory Corporation of America) using support from 23andMe. FS, EV, MvD, BSTP and SEF are supported by the Max Planck Society. BSTP is supported by the Simons Foundation (Award ID: 514787). The authors gratefully acknowledge the ongoing contribution of the participants in the TEDS and their families. TEDS is supported by a programme grant to RP from the UK Medical Research Council (MR/M021475/1 and previously G0901245), with additional support from the US National Institutes of Health (AG046938). RP is supported by a Medical Research Council Professorship award (G19/2). The research leading to these results has also received funding from the European Research Council under the European Union's Seventh Framework Programme (FP7/2007-2013)/ grant agreement n° 602768. This project has received funding from the European Union's Horizon 2020 research and innovation programme, Marie Skłodowska Curie Actions (MSCA-ITN-2016) Innovative Training Networks (CAPICE grant 721567). KR is supported by a Sir Henry Wellcome Postdoctoral Fellowship.

Conflict of Interest

The authors declare no conflict of interest.

References

1. Milledge SV, Cortese S, Thompson M, McEwan F, Rolt M, Meyer B, *et al.* Peer relationships and prosocial behaviour differences across disruptive behaviours. *Eur Child Adolesc Psychiatry* 2019; **28**: 781–93.
2. American Psychiatric Association. *Diagnostic and statistical manual of mental disorders (DSM-5®)*. American Psychiatric Pub: 2013.
3. Tıgli Filizer A, Cerit C, Tüzün B, Aker AT. Social Aspect of Functioning Deteriorates More Than Individual Aspect in Patients with Remitted Bipolar Disorder. *Nöro Psikiyatri Arş* 2016; **53**: 158–62.
4. Kupferberg A, Bicks L, Hasler G. Social functioning in major depressive disorder. *Neurosci Biobehav Rev* 2016; **69**: 313–32.
5. Green MF, Horan WP, Lee J. Social cognition in schizophrenia. *Nat Rev Neurosci* 2015; **16**: 620–31.
6. Hay DF. Prosocial Development. *J Child Psychol Psychiatry* 1994; **35**: 29–71.
7. Fabiano GA, Vujnovic RK, Pariseau ME. Peer Problems. In Thomas JC, Hersen M (eds.). *Handbook of Clinical Psychology Competencies* Springer New York: New York, NY, 2010, pp 1563–88.

8. Decety J. The neurodevelopment of empathy in humans. *Dev Neurosci* 2010; **32**: 257–67.
9. Saudino KJ, Ronald A, Plomin R. The etiology of behavior problems in 7-year-old twins: substantial genetic influence and negligible shared environmental influence for parent ratings and ratings by same and different teachers. *J Abnorm Child Psychol* 2005; **33**: 113–30.
10. Scourfield J, John B, Martin N, McGuffin P. The development of prosocial behaviour in children and adolescents: a twin study. *J Child Psychol Psychiatry* 2004; **45**: 927–35.
11. Knafo A, Plomin R. Prosocial Behavior From Early to Middle Childhood: Genetic and Environmental Influences on Stability and Change. *Dev Psychol* 2006; **42**: 771–86.
12. St Pourcain B, Haworth CMA, Davis OSP, Wang K, Timpson NJ, Evans DM, *et al.* Heritability and genome-wide analyses of problematic peer relationships during childhood and adolescence. *Hum Genet* 2015; **134**: 539–51.
13. Demontis D, Walters RK, Martin J, Mattheisen M, Als TD, Agerbo E, *et al.* Discovery of the first genome-wide significant risk loci for attention deficit/hyperactivity disorder. *Nat Genet* 2019; **51**: 63–75.
14. Grove J, Ripke S, Als TD, Mattheisen M, Walters RK, Won H, *et al.* Identification of common genetic risk variants for autism spectrum disorder. *Nat Genet* 2019; **51**: 431–44.
15. Stahl EA, Breen G, Forstner AJ, McQuillin A, Ripke S, Trubetskoy V, *et al.* Genome-wide association study identifies 30 loci associated with bipolar disorder. *Nat Genet* 2019; **51**: 793–803.
16. Wray NR, Ripke S, Mattheisen M, Trzaskowski M, Byrne EM, Abdellaoui A, *et al.* Genome-wide association analyses identify 44 risk variants and refine the genetic architecture of major depression. *Nat Genet* 2018; **50**: 668–81.
17. Schizophrenia Working Group of the Psychiatric Genomics Consortium. Biological insights from 108 schizophrenia-associated genetic loci. *Nature* 2014; **511**: 421–7.
18. Martin J, Taylor MJ, Lichtenstein P. Assessing the evidence for shared genetic risks across psychiatric disorders and traits. *Psychol Med* 2018; **48**: 1759–74.
19. Schlag F, St Pourcain B, Rimfeld K, Allegrini A, Plomin R, Buitelaar J, *et al.* Investigation of association profiles between polygenic risk for psychiatric disorder and social skill sets in the general population. *2020.osf.io/p5wah*
20. Boyd A, Golding J, Macleod J, Lawlor DA, Fraser A, Henderson J, *et al.* Cohort Profile: the 'children of the 90s'--the index offspring of the Avon Longitudinal Study of Parents and Children. *Int J Epidemiol* 2013; **42**: 111–27.
21. Rimfeld K, Malanchini M, Spargo T, Spickernell G, Selzam S, McMillan A, *et al.* Twins Early Development Study: A Genetically Sensitive Investigation into Behavioral and Cognitive Development from Infancy to Emerging Adulthood. *Twin Res Hum Genet* 2019; **22**: 508–13.

22. Fraser A, Macdonald-Wallis C, Tilling K, Boyd A, Golding J, Davey Smith G, *et al.* Cohort Profile: the Avon Longitudinal Study of Parents and Children: ALSPAC mothers cohort. *Int J Epidemiol* 2013; **42**: 97–110.
23. Goodman R. The Strengths and Difficulties Questionnaire: a research note. *J Child Psychol Psychiatry* 1997; **38**: 581–6.
24. Wray NR, Lee SH, Mehta D, Vinkhuyzen AAE, Dudbridge F, Middeldorp CM. Research review: polygenic methods and their application to psychiatric traits. *J Child Psychol Psychiatry* 2014; **55**: 1068–87.
25. Bates D, Mächler M, Bolker B, Walker S. Fitting linear mixed-effects models using lme4. *ArXiv Prepr ArXiv14065823* 2014;
26. McFadden D. Conditional logit analysis of qualitative choice behavior. 1973;
27. Nyholt DR. A Simple Correction for Multiple Testing for Single-Nucleotide Polymorphisms in Linkage Disequilibrium with Each Other. *Am J Hum Genet* 2004; **74**: 765–9.
28. Dudbridge F. Power and Predictive Accuracy of Polygenic Risk Scores. *PLOS Genet* 2013; **9**: e1003348.
29. Viechtbauer W. Conducting meta-analyses in R with the metafor package. *J Stat Softw* 2010; **36**: 1–48.
30. Lajeunesse MJ. Meta-analysis and the comparative phylogenetic method. *Am Nat* 2009; **174**: 369–81.
31. Germine L, Robinson EB, Smoller JW, Calkins ME, Moore TM, Hakonarson H, *et al.* Association between polygenic risk for schizophrenia, neurocognition and social cognition across development. *Transl Psychiatry* 2016; **6**: e924–e924.
32. Wendt FR, Carvalho CM, Gelernter J, Polimanti R. The effect of the genetic liability to autism spectrum disorder on emotion recognition in young unaffected probands from a population-based cohort. *medRxiv* 2019; 19001230.
33. Warrier V, Toro R, Chakrabarti B, Børghlum AD, Grove J, Hinds DA, *et al.* Genome-wide analyses of self-reported empathy: correlations with autism, schizophrenia, and anorexia nervosa. *Transl Psychiatry* 2018; **8**: 1–10.
34. Abdellaoui A, Nivard MG, Hottenga J-J, Fedko I, Verweij KJH, Baselmans BML, *et al.* Predicting loneliness with polygenic scores of social, psychological and psychiatric traits. *Genes Brain Behav* 2018; **17**: e12472.
35. Bralten J, Klemann C, Mota NR, Witte WD, Arango C, Fabbri C, *et al.* Genetic underpinnings of sociability in the UK Biobank. *bioRxiv* 2019; 781195.
36. St Pourcain B, Robinson EB, Anttila V, Sullivan BB, Maller J, Golding J, *et al.* ASD and schizophrenia show distinct developmental profiles in common genetic overlap with population-based social communication difficulties. *Mol Psychiatry* 2018; **23**: 263–70.
37. Kessler RC, Angermeyer M, Anthony JC, de Graaf R, Demyttenaere K, Gasquet I, *et al.* Lifetime prevalence and age-of-onset distributions of mental disorders in the World

- Health Organization's World Mental Health Survey Initiative. *World Psychiatry* 2007; **6**: 168–76.
38. Werf M van der, Hanssen M, Köhler S, Verkaaik M, Verhey FR, Investigators R, *et al.* Systematic review and collaborative recalculation of 133 693 incident cases of schizophrenia. *Psychol Med* 2014; **44**: 9–16.
39. Katz SJ, Conway CC, Hammen CL, Brennan PA, Najman JM. Childhood Social Withdrawal, Interpersonal Impairment, and Young Adult Depression: A Mediational Model. *J Abnorm Child Psychol* 2011; **39**: 1227–38.
40. Bucci P, Mucci A, Piegari G, Nobile M, Pini S, Rossi A, *et al.* Characterization of premorbid functioning during childhood in patients with deficit vs. non-deficit schizophrenia and in their healthy siblings. *Schizophr Res* 2016; **174**: 172–6.
41. Yalin N, Young AH. The Age of Onset of Unipolar Depression. In de Girolamo G, McGorry PD, Sartorius N (eds.). *Age of Onset of Mental Disorders: Etiopathogenetic and Treatment Implications* Springer International Publishing: Cham, 2019, pp 111–24.
42. Immonen J, Jääskeläinen E, Korpela H, Miettunen J. Age at onset and the outcomes of schizophrenia: A systematic review and meta-analysis. *Early Interv Psychiatry* 2017; **11**: 453–60.
43. Friedman SR, Rapport LJ, Lumley M, Tzelepis A, VanVoorhis A, Stettner L, *et al.* Aspects of social and emotional competence in adult attention-deficit/hyperactivity disorder. *Neuropsychology* 2003; **17**: 50–8.
44. Adams GR, Ryan BA, Ketsetzis M, Keating L. Rule compliance and peer sociability: A study of family process, school-focused parent–child interactions, and children's classroom behavior. *J Fam Psychol* 2000; **14**: 237–50.
45. Hoza B. Peer Functioning in Children With ADHD. *J Pediatr Psychol* 2007; **32**: 655–63.
46. Matthias C, LaVelle JM, Johnson DR, Wu Y-C, Thurlow ML. Exploring predictors of bullying and victimization of students with autism spectrum disorder (ASD): findings from NLTs 2012. *J Autism Dev Disord* 2021; 1–12.
47. Feldman JS, Tung I, Lee SS. Social Skills Mediate the Association of ADHD and Depression in Preadolescents. *J Psychopathol Behav Assess* 2017; **39**: 79–91.
48. Powell V, Riglin L, Hammerton G, Eyre O, Martin J, Anney R, *et al.* What explains the link between childhood ADHD and adolescent depression? Investigating the role of peer relationships and academic attainment. *Eur Child Adolesc Psychiatry* 2020; **29**: 1581–91.
49. Oakley BF, Tillmann J, Ahmad J, Crawley D, San José Cáceres A, Holt R, *et al.* How do core autism traits and associated symptoms relate to quality of life? Findings from the Longitudinal European Autism Project. *Autism* 2021; **25**: 389–404.
50. Cross-Disorder Group of the Psychiatric Genomics Consortium. Genomic relationships, novel loci, and pleiotropic mechanisms across eight psychiatric disorders. *Cell* 2019; **179**: 1469–82.
51. Akingbuwa WA, Hammerschlag AR, Jami ES, Allegrini AG, Karhunen V, Sallis H, *et al.* Genetic Associations Between Childhood Psychopathology and Adult Depression and

- Associated Traits in 42 998 Individuals: A Meta-Analysis. *JAMA Psychiatry* 2020; **77**: 715–28.
52. Rees E, Owen MJ. Translating insights from neuropsychiatric genetics and genomics for precision psychiatry. *Genome Med* 2020; **12**: 1–16.
 53. Scourfield J, John B, Martin N, McGuffin P. The development of prosocial behaviour in children and adolescents: a twin study. *J Child Psychol Psychiatry* 2004; **45**: 927–35.
 54. Maes HHM, Neale MC, Kendler KS, Hewitt JK, Silberg JL, Foley DL, *et al.* Assortative mating for major psychiatric diagnoses in two population-based samples. *Psychol Med* 1998; **28**: 1389–401.
 55. Morris TT, Davies NM, Hemani G, Smith GD. Population phenomena inflate genetic associations of complex social traits. *Sci Adv* 2020; **6**: eaay0328.
 56. Taylor AE, Jones HJ, Sallis H, Euesden J, Stergiakouli E, Davies NM, *et al.* Exploring the association of genetic factors with participation in the Avon Longitudinal Study of Parents and Children. *Int J Epidemiol* 2018; **47**: 1207–16.
 57. van Rheenen W, Peyrot WJ, Schork AJ, Lee SH, Wray NR. Genetic correlations of polygenic disease traits: from theory to practice. *Nat Rev Genet* 2019; **20**: 567–81.

Figure legends

Figure 1: Polygenic scoring analyses between social behaviour and psychiatric disorder in ALSPAC.

Δ McFadden's- R^2 is shown for the prediction of low-prosociality and peer-problem scores by ADHD-PRS (a, b), ASD-PRS (c, d), BP-PRS (e,f), MD-PRS (g, h), SCZ-PRS (i, j).

Psychiatric disorder samples (ADHD-PGC/iPSYCH, ASD-PGC/iPSYCH, BP-PGC, MD-PGC/UKBB, and SCZ-PGC) were used to construct Z-standardised PRS in ALSPAC (ADHD-PRS, ASD-PRS, BP-PRS, MD-PRS, and SCZ-PRS) at multiple P -value thresholds. Association analyses with social behaviour (low prosociality and peer problems) were conducted using negative binomial regression (multiple-testing corrected P -value: $*P \leq 0.001$).

ADHD - Attention-deficit/hyperactivity disorder; ALSPAC - Avon Longitudinal study of Parents and Children; ASD - Autism spectrum disorders; BP - Bipolar disorder; iPSYCH - Lundbeck Foundation Initiative for Integrative Psychiatric Research; MD- Major depression; PGC - Psychiatric Genomics consortium; PRS-Polygenic risk scores; P_T - PRS threshold; SCZ - Schizophrenia

Low-prosociality and peer-problem scores were assessed using the Strengths-and-Difficulties questionnaire.

Figure 2: Polygenic scoring analyses between social behaviour and psychiatric disorder in TEDS.

Δ McFadden's- R^2 is shown for the prediction of low-prosociality and peer-problem scores by ADHD-PRS (a, b), ASD-PRS (c, d), BP-PRS (e,f), MD-PRS (g, h), SCZ-PRS (i, j).

Psychiatric disorder samples (ADHD-PGC/iPSYCH, ASD-PGC/iPSYCH, BP-PGC, MD-PGC/UKBB, and SCZ-PGC) were used to construct Z-standardised PRS in TEDS (ADHD-PRS, ASD-PRS, BP-PRS, MD-PRS, and SCZ-PRS) at multiple P -value thresholds. Association analyses with social behaviour (low prosociality and peer problems) were conducted using negative binomial regression (multiple-testing corrected one-sided P -value: $*P \leq 0.0017$).

ADHD - Attention-deficit/hyperactivity disorder; ASD - Autism spectrum disorders; BP - Bipolar disorder; iPSYCH - Lundbeck Foundation Initiative for Integrative Psychiatric Research; MD- Major depression; PGC - Psychiatric Genomics consortium; PRS-Polygenic risk scores; P_T - PRS threshold; SCZ - Schizophrenia; TEDS - Twins Early Development Study

Low-prosociality and peer-problem scores were assessed using the Strengths-and-Difficulties questionnaire.

Figure 3: Meta-analytically predicted PRS effects for psychiatric disorder with social behaviour.

For each disorder (ADHD, ASD, BP, MD and schizophrenia) 29 SDQ-based PRS effects from ALSPAC and TEDS (at $P_T \leq 0.1$) were combined using random-effects meta-regression and predicted by age-, reporter- (parent versus teacher), and trait- (low prosociality versus peer problems) specific social symptoms. Predicted estimates for PRS effects (used to fit the meta-regression model) are shown as dots.

ADHD - Attention-Deficit/Hyperactivity Disorder; ALSPAC - Avon Longitudinal study of Parents and Children; ASD - Autism spectrum disorders; BP - Bipolar disorder; MD- Major depression; PRS-Polygenic risk scores; P_T - PRS threshold; SCZ - Schizophrenia; SDQ - Strengths-and-Difficulties questionnaire; TEDS - Twins Early Development Study; Y - years

Tables

Table 1: Descriptive information of low prosociality and peer problems in ALSPAC and TEDS.

		Age (years)	Variable score	% Males	N
		Mean (SD)	Mean (SD)		
ALSPAC					
Low prosociality ¹					
Parent-reported:	7Y	6.79 (0.11)	1.82 (1.75)	51	5610
	10Y	9.65 (0.12)	1.66 (1.65)	50	5670
	12Y	11.72 (0.13)	1.65 (1.68)	50	5268
	13Y	13.16 (0.18)	2.76 (1.73)	50	5069
	17Y	16.84 (0.36)	1.97 (1.87)	48	4151
Teacher-reported:	8Y	8.33 (0.31)	2.21 (2.42)	50	3686
	11Y	11.16 (0.33)	2.06 (2.35)	50	4417
Peer problems					
Parent-reported:	7Y	6.79 (0.11)	1.02 (1.04)	51	5608
	10Y	9.65 (0.12)	1.1 (1.49)	50	5661
	12Y	11.72 (0.13)	1.1 (1.56)	50	5263
	13Y	13.16 (0.18)	1.19 (1.61)	50	5061
	17Y	16.84 (0.36)	1.11 (1.51)	48	4156
Teacher-reported:	8Y	8.33 (0.31)	1.13 (1.74)	50	3689
	11Y	11.16 (0.33)	1.2 (1.85)	50	4417
TEDS					
Low prosociality ¹					
Parent-reported:	4Y	4.04 (0.12)	2.6 (1.86)	48	6958
	7Y	7.06 (0.25)	1.84 (1.79)	48	7112
	9Y	9.01 (0.29)	2.71 (1.71)	47	3375
	11Y	11.25 (0.7)	1.46 (1.65)	48	6039
	16Y	16.31 (0.68)	1.74 (1.94)	45	5252
Teacher-reported:	7Y	7.2 (0.28)	2.68 (2.36)	49	5900
	9Y	9.03 (0.29)	2.44 (2.26)	47	2825
	12Y	11.5 (0.66)	1.99 (2.09)	47	4931
Peer problems					
Parent-reported:	4Y	4.04 (0.12)	1.52 (1.54)	48	6948
	7Y	7.06 (0.25)	1.01 (1.45)	48	7112
	9Y	9.01 (0.29)	1.11 (1.59)	47	3370
	11Y	11.25 (0.7)	1.11 (1.54)	48	6023
Teacher-reported:	7Y	7.2 (0.28)	1.07 (1.48)	49	5900
	9Y	9.03 (0.29)	0.85 (1.47)	47	2828
	12Y	11.51 (0.66)	1.04 (1.6)	47	4964

¹ Reverse coded SDQ prosocial scale.

ALSPAC - Avon Longitudinal study of Parents and Children; SDQ - Strengths-and-Difficulties questionnaire; TEDS - Twins Early Development Study; Y - Age in years

All low-prosociality and peer-problem scores were assessed using the Strengths-and-Difficulties questionnaire.

Table 2: Random-effects meta-regression across psychiatric PRS effects on social-behavioural symptoms¹.

ADHD-PRS ($R^2=0.88$)			
Parameter	θ (SE)	Z-value	P-value
Intercept (Age 4, parent-reported, low prosociality)	-0.015 (0.01)	-1.49	0.14
Age (Centered at 4 years)	0.0025 (0.00089)	2.86	0.0042
Reporter (Teacher-reported)	0.044 (0.0085)	5.16	2.5×10^{-7}
Trait (Peer problems)	0.03 (0.0089)	3.38	7.3×10^{-4}
ASD-PRS ($R^2=0.58$)			
Parameter	θ (SE)	Z-value	P-value
Intercept (Low prosociality)	0.021 (0.0063)	3.36	7.7×10^{-4}
Trait	0.037 (0.0083)	4.47	7.9×10^{-6}
BP-PRS ($R^2=0.00$)			
Parameter	θ (SE)	Z-value	P-value
Intercept	0.0054 (0.0056)	0.98	0.33
MD-PRS ($R^2=0.84$)			
Parameter	θ (SE)	Z-value	P-value
Intercept (Age 4, low prosociality)	-0.018 (0.011)	-1.66	0.096
Age (Centered at 4 years)	0.0035 (0.00095)	3.74	1.9×10^{-4}
Trait (Peer problems)	0.048 (0.0093)	5.14	2.8×10^{-7}
Schizophrenia-PRS ($R^2=0.45$)			
Parameter	θ (SE)	Z-value	P-value
Intercept (Low prosociality)	0.017 (0.011)	1.55	0.12
Age (Centered at 4 years)	0.0018 (0.00096)	1.86	0.063
Trait (Peer problems)	-0.027 (0.0094)	-2.94	0.0033

¹ PRS association effects for ADHD, ASD, BP, MD and schizophrenia risk (based on negative binomial regression) were combined across 29 social symptoms (14 ALSPAC-based + 15 TEDS-based; at $P_T \leq 0.1$) using random-effects meta-regressions, accounting for phenotypic correlations between social scores. Here, the most parsimonious models are shown with the predictors (θ) of PRS effect heterogeneity including age-, reporter- (parent versus teacher reports), and trait-specific differences in social behaviour (low prosociality versus peer problems).

ADHD - Attention-Deficit/Hyperactivity Disorder; ALSPAC - Avon Longitudinal study of Parents and Children; ASD - Autism spectrum disorder; BP - Bipolar disorder; MD- Major depression; PRS-Polygenic risk scores; P_T - PRS threshold; TEDS - Twins Early Development Study

Figure 1

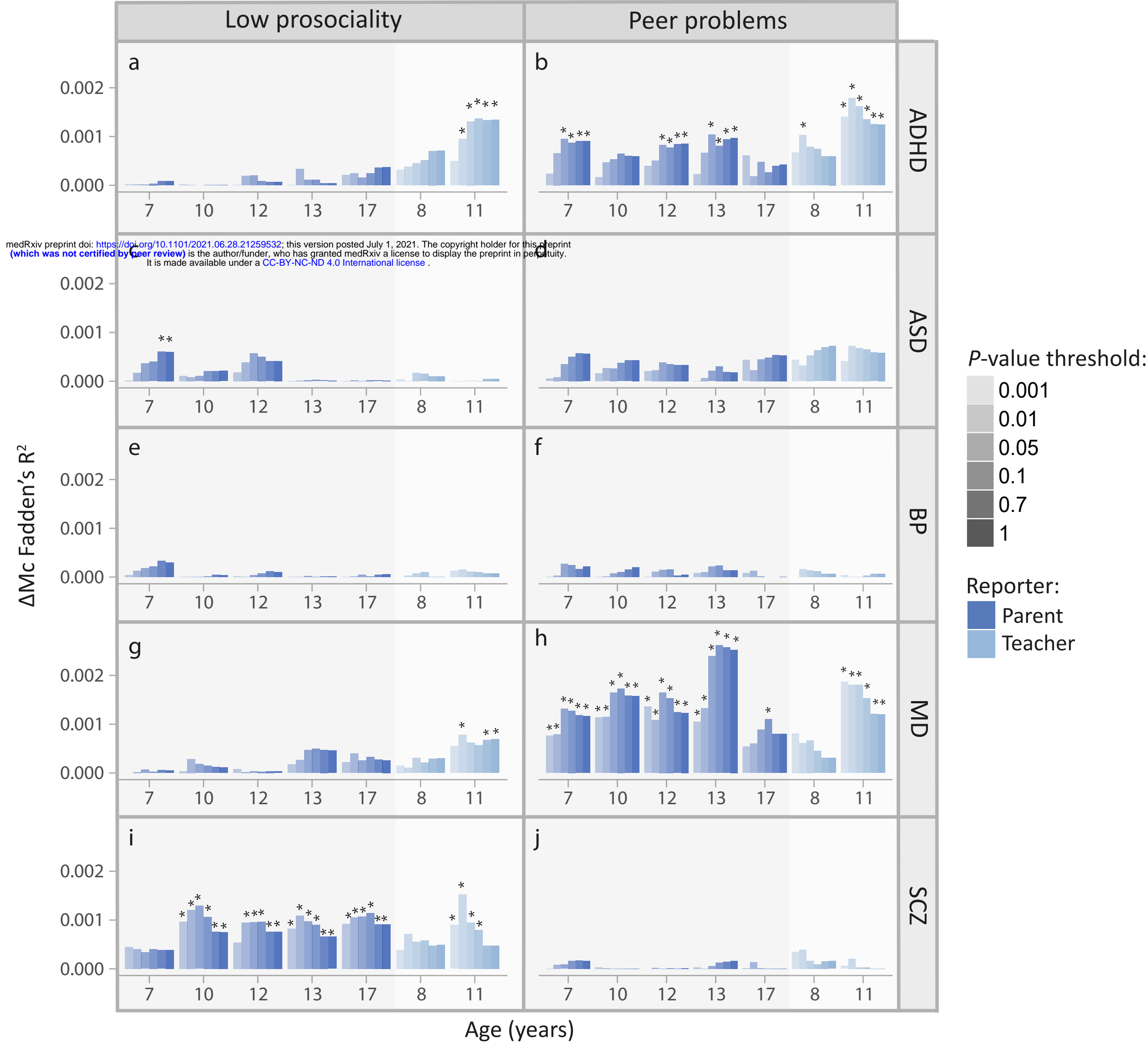


Figure 2

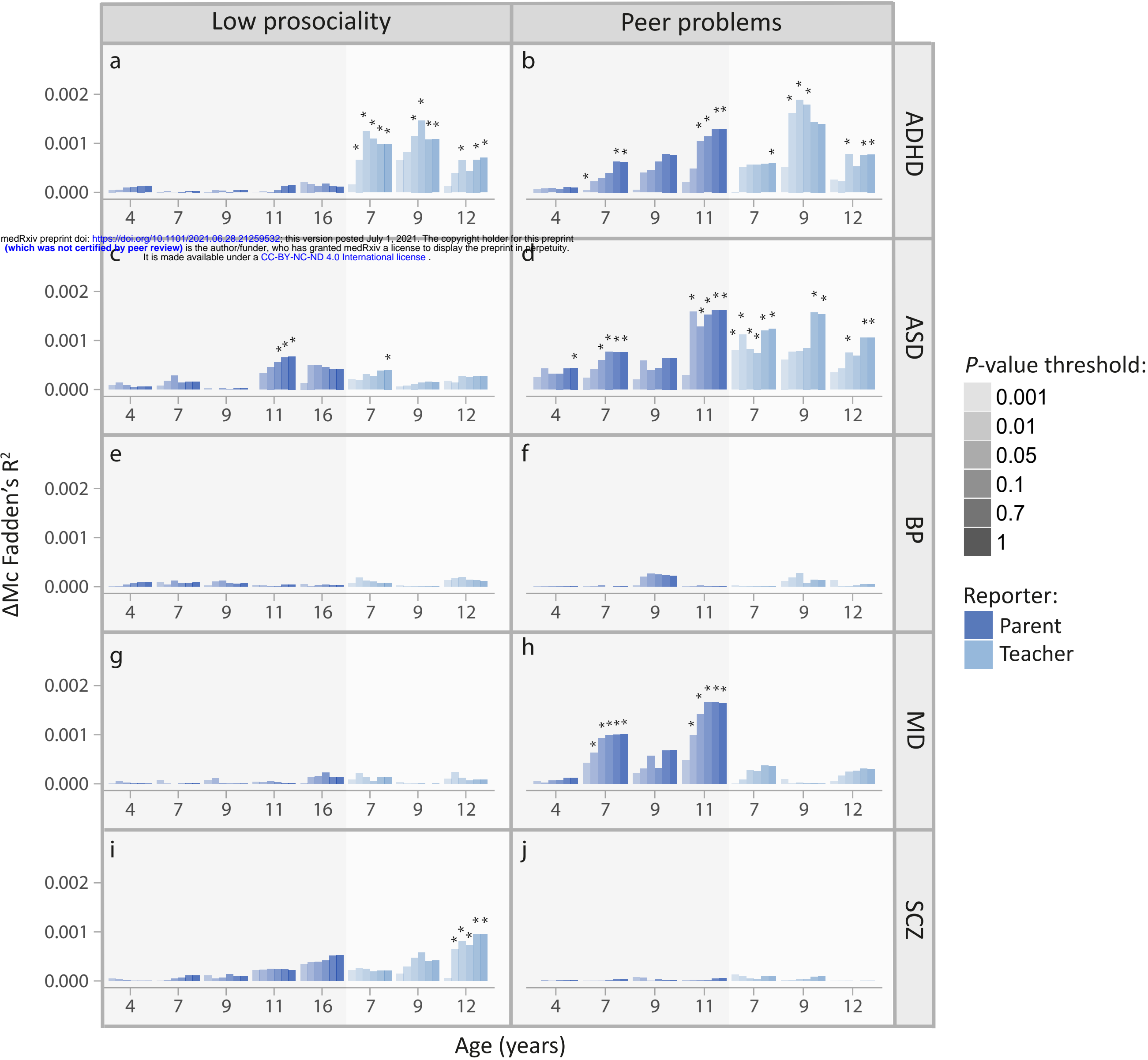


Figure 3

