

1 **The effect of D-cycloserine on brain processing of breathlessness over**
2 **pulmonary rehabilitation - an experimental medicine study**

3

4

5 Sarah L. Finnegan ¹ (sarah.finnegan@ndcn.ox.ac.uk)

6 Olivia K. Harrison ^{1,2,3}

7 Sara Booth ¹⁰

8 Andrea Dennis ¹²

9 Martyn Ezra¹

10 Catherine J. Harmer ^{4,5}

11 Mari Herigstad ⁶

12 Bryan Guillaume ⁸

13 Thomas E. Nichols ^{8,1}

14 Najib M. Rahman ^{7,9}

15 Andrea Reinecke ⁴

16 Olivier Renaud ¹¹

17 Kyle T.S. Pattinson¹ (kyle.pattinson@nda.ox.ac.uk)

18

19 ¹. Wellcome Centre for Integrative Neuroimaging and Nuffield Division of Anaesthetics,
20 Nuffield Department of Clinical Neurosciences, University of Oxford, Oxford, UK.

21 ². Translational Neuromodeling Unit, Institute for Biomedical Engineering, University of
22 Zurich and ETH Zurich, Switzerland.

23 ³. School of Pharmacy, University of Otago, Dunedin, New Zealand

24 ⁴. Department of Psychiatry, Medical Sciences, University of Oxford, Oxford, UK;

25 ⁵. Oxford Health NHS Foundation Trust, Warneford Hospital Oxford

26 ⁶. Department of Biosciences and Chemistry, Sheffield Hallam University, Sheffield,

27 UK

28 NOTE: This preprint reports new research that has not been certified by peer review and should not be used to guide clinical practice.
Nuffield Department of Medicine, University of Oxford, Oxford, UK

29 ⁸. Oxford Big Data Institute, Li Ka Shing Centre for Health Information and
30 Discovery, Nuffield Department of Population Health, University of Oxford, Oxford
31 OX3 7LF UK

32 ⁹. Oxford NIHR Biomedical Research Centre, Oxford OX3 7JX

33 ¹⁰. Cambridge Breathlessness Intervention Service, Box 63, Elsworth House,
34 CUNHSFT, Hills Road, Cambridge CB2 200

35 ¹¹. Department of Psychology, University of Geneva, Switzerland

36 ¹². Perspectum, Oxford, OX4 2LL

37

38 **Corresponding author: Sarah L. Finnegan;** sarah.finnegan@ndcn.ox.ac.uk

39 6th Floor, West Wing, John Radcliffe Hospital, Oxford, OX3 9DU; 01865 234 544

40

41 **Author contributions**

42 **S.L.F** – Acquisition of data, analysis, interpretation, drafting, editing and approving
43 manuscript

44 **O.K.H** - Interpretation, editing and approving manuscript

45 **S.B** - Study design, editing and approving manuscript

46 **A.D** - Acquisition of data, analysis, approving manuscript

47 **M.E** – Analysis, editing and approving manuscript

48 **B.G** – Analysis, approving manuscript

49 **C.J.H** – Study design, editing and approving manuscript

50 **M.H** - Study design, acquisition of data, editing and approving manuscript

51 **T.N** – Analysis, approving manuscript

52 **N.M.R** - Study design, editing and approving manuscript

53 **O.R** – Analysis, approving manuscript

54 **A.R** - Study design, editing and approving manuscript

55 **K.T.S.P** - Study design, interpretation, editing and approving manuscript

56

57 **Funding**

58 This work was supported by the Dunhill Medical Trust (Grant R333/0214) and the
59 National Institute for Health Research Biomedical Research Centre (Grant
60 RCF18/002) based at Oxford University Hospitals NHS Foundation Trust and The
61 University of Oxford. This research was funded in whole, or in part, by the Wellcome
62 Trust 203139/Z/16/Z. For the purpose of Open Access, the author has applied a CC
63 BY public copyright licence to any Author Accepted Manuscript version arising from
64 this submission. OKH was supported via funding from the European Union's Horizon
65 2020 research and innovation programme under the Grant Agreement No 793580, and
66 as a Rutherford Discovery Postdoctoral Fellow from the Royal Society of New Zealand.
67 CJH is supported by the National Institute for Health Research Biomedical Research
68 Centre based at Oxford Health NHS Foundation Trust and The University of Oxford,
69 and by the UK Medical Research Council. KTSP and NMR are supported by the
70 National Institute for Health Research Biomedical Research Centre based at Oxford
71 University Hospitals NHS Foundation Trust and the University of Oxford. AR is funded
72 by a fellowship from MQ. Transforming mental health.

73

74 **Disclosures**

75 Dr. Harmer has valueless shares in p1vital and serves on their advisory panel. She
76 has received consultancy payments from p1vital, Zogenix, J&J, Pfizer, Servier, Eli-
77 Lilly, Astra Zeneca, Lundbeck. Dr. Pattinson and Dr Ezra are named as co-inventors
78 on a provisional U.K. patent application titled "Use of cerebral nitric oxide donors in the
79 assessment of the extent of brain dysfunction following injury. Dr. Rahman, has
80 received consulting fees from Rocket Medical U.K. Prof. Nichols has received
81 consulting fees from Perspectum Diagnostics. The remaining authors have no
82 biomedical financial interests or potential conflicts of interest.

83

84

85

86 **Abstract**

87 **Background:** Pulmonary rehabilitation is the best treatment for chronic
88 breathlessness in COPD but there remains an unmet need to improve efficacy.
89 Pulmonary rehabilitation has strong parallels with exposure-based cognitive
90 behavioural therapies (CBT), both clinically and in terms of brain activity patterns. The
91 partial NMDA-receptor agonist, D-cycloserine has shown promising results in
92 enhancing efficacy of CBT, thus we hypothesised that it would similarly augment the
93 effects of pulmonary rehabilitation in the brain. Positive findings would support further
94 development in phase 3 clinical trials.

95 **Methods:** 72 participants with mild-to-moderate COPD were recruited to a double-
96 blind pre-registered (ID: NCT01985750) experimental medicine study running parallel
97 to a pulmonary rehabilitation course. Participants were randomised to 250mg D-
98 cycloserine or placebo, administered immediately prior to the first four sessions of
99 pulmonary rehabilitation. Primary outcome measures were differences between D-
100 cycloserine and placebo in brain activity in the anterior insula, posterior insula, anterior
101 cingulate cortices, amygdala and hippocampus following completion of pulmonary
102 rehabilitation. Secondary outcomes included the same measures at an intermediate
103 time point and voxel-wise difference across wider brain regions.

104 **Results:** No difference between D-cycloserine and placebo groups was observed
105 across the primary or secondary outcome measures. Questionnaire and measures of
106 respiratory function showed no group difference.

107 **Conclusions:** This is the first study testing brain-active drugs in pulmonary
108 rehabilitation. Rigorous trial methodology and validated surrogate end-points
109 maximised statistical power. Although increasing evidence supports therapeutic
110 modulation of NMDA pathways to treat symptoms, we conclude that a phase 3 clinical
111 trial of D-cycloserine would not be worthwhile.

112

113

114 **Key Words:** Neuroimaging, breathlessness-expectation, brain-active drugs, cognitive
115 behavioural therapy

116

117 **Key Messages:**

118 **What is the key question?**

119 Does the partial NMDA-receptor agonist, D-cycloserine, augment the effects of
120 pulmonary rehabilitation on breathlessness related brain activity?

121 **What is the bottom line?**

122 Rigorous trial methodology and validated surrogate end-points revealed no effect of
123 D-cycloserine on breathlessness related brain activity across pulmonary rehabilitation.

124 **Why read on?**

125 This study highlights both the value of functional magnetic resonance imaging in “de-
126 risking” expensive clinical trials and provides detailed investigation of brain-targeted
127 points for pharmacological treatments of breathlessness.

128 **Introduction**

129

130 Chronic breathlessness is a central symptom of chronic obstructive pulmonary disease
131 (COPD). Currently, pulmonary rehabilitation offers the most effective treatment
132 strategy for chronic breathlessness in COPD. However, around 30% of patients derive
133 no clinical benefit [1]. Health-related benefits plateau within the first 6-months following
134 pulmonary rehabilitation, returning to pre-rehabilitation levels for the majority of
135 patients after 12-18 months [2]. Thus, there remains an unmet need to develop
136 strategies to increase or prolong the beneficial effects of pulmonary rehabilitation.

137

138 A body of evidence has shown that improvements in breathlessness over pulmonary
139 rehabilitation result from a reappraisal of the sensory experience [3, 4], arresting the
140 downward spiral of fear, avoidance and physical deconditioning . The safe, graded
141 exposure to breathlessness within pulmonary rehabilitation parallels techniques of
142 exposure-based cognitive behavioural therapy (CBT), in which pathological fears are
143 first activated and then disconfirmed by new adaptive information . These similarities
144 are highted by clinical studies of both pulmonary rehabilitation and cognitive
145 behavioural therapy, which show changes to brain activity within areas associated with
146 attention and learned sensory and emotional expectations such as cingulate cortex,
147 angular gyrus, insula and supramarginal gyrus, [4, 5].

148

149 In the field of psychiatry, there has been great interest in the partial NMDA agonist D-
150 cycloserine, as a pharmacological adjunct to enhance efficacy of exposure-based CBT
151 [6-8]. D-cycloserine is thought to act at the glycine modulatory site of the NMDA
152 receptor. Its high affinity binding enhances synaptic plasticity, promoting emotional
153 learning processes [8] boosting therapeutic effects of CBT as a result [7, 9, 10].
154 Experimental medicine studies have demonstrated reductions in emotional response
155 within the amygdala when paired with CBT [6], increasing activity within hippocampus
156 in a manner linked to learning [11]. In CBT for alcoholism, D-cycloserine decreased

157 cue induced brain activity across the ventral and dorsal striatum which was associated
158 with reductions in alcohol craving [12]. Clinical trials of D-cycloserine paired with CBT
159 have demonstrated reductions in symptoms of acrophobia [13], social phobia [14],
160 panic disorder [15] and obsessive compulsive disorder (OCD) over placebo [16, 17],
161 often with medium to large effect sizes.

162

163 Given the strong parallels between pulmonary rehabilitation and exposure-based CBT,
164 and the strong effects of pulmonary rehabilitation on affective components of
165 breathlessness [3, 4] we hypothesised that D-cycloserine may have therapeutic
166 benefits in enhancing pulmonary rehabilitation.

167

168 To test this hypothesis, we performed an experimental medicine study using functional
169 magnetic resonance imaging (fMRI) markers of drug efficacy in the brain. We chose
170 this approach over a phase 3 clinical trial because the differences between COPD
171 populations and those with primary psychiatric conditions in which D-cycloserine has
172 been tested so far might necessitate a bespoke trial design. Therefore, we wanted to
173 test efficacy in the brain first. fMRI end-points are more sensitive than clinical ones
174 [18] and thus facilitate the adoption of more statistically robust approaches. This
175 means that results can be obtained with smaller sample sizes than in a phase 3 clinical
176 trial. A positive result from an fMRI study would facilitate clinical trial design and help
177 early decisions of go/no-go on further clinical development.

178

179 **Methods and Materials**

180 An overview of the methodology is presented here. Full details, including non-
181 completion and sensitivity analysis can be found within supplementary materials. The
182 study and statistical analysis plan were pre-registered on clinicaltrials.gov (ID:
183 NCT01985750) prior to unblinding. This is the first example of pre-registration of both
184 study design and analysis plan in a respiratory neuroimaging study.

185

186 **Sample Size**

187 At the time of study inception (and to a large extent still to date), the literature regarding
188 D-cycloserine's effects on functional brain activity is very limited. Therefore, in order to
189 calculate the sample sizes required for this study we first took into account the
190 described effects of D-cycloserine in clinical studies of augmentation for cognitive
191 behavioural therapy for anxiety disorders, where effect sizes of up to 1.06 have been
192 reported (although more commonly 0.4 to 0.7) [13, 14, 19]. The most relevant paper
193 (on treatment of snake phobia [10]) demonstrated that effects observed with
194 neuroimaging were more sensitive than behavioural effects, therefore powering for a
195 behavioural outcome measure (breathlessness-anxiety) provided a safe margin and
196 was likely to be sufficiently conservative to detect our measures of interest. This was
197 particularly the case as compared to the relatively blunt nature of behavioural data
198 collection, functional neuroimaging carries considerably more specificity and statistical
199 power. The study was not therefore specifically powered to investigate the clinical
200 effects of D-cycloserine. In our previous study we observed an 11% (SD15%)
201 improvement in breathlessness-related anxiety, measured with our fMRI word task
202 (pre-treatment mean score 38%, post treatment mean score 27%, difference 11%, SD
203 of difference 15%) [4]. Making a conservative assumption, we estimated that D-
204 cycloserine augments this response with an effect size of 0.4. Assuming a similar
205 coefficient of variation we anticipated an 18% (SD24%) improvement in
206 breathlessness-anxiety (i.e. pre-treatment mean score 38%, post treatment mean

207 score 20%, difference 18%, SD of difference 24%). Assuming $\alpha=0.05$ and power 0.80,
208 then we estimated a sample size of 36 in each group randomised 1:1. As this is a
209 behavioural outcome, we expected this to have sufficient power to detect change in
210 BOLD signalling.

211

212 **Participants**

213 91 participants (30 female, median age 70 years; range 46-85 years) with COPD were
214 recruited immediately prior to their enrolment in a National Health Service-prescribed
215 course of pulmonary rehabilitation (full demographic information including non-
216 continuation is shown in Supplementary material Table 1). From this population, 72
217 participants completed all study visits (18 female, median age 71 years (46-85 years))
218 (Table 1 and Figure 2). Written informed consent was obtained from all participants
219 prior to the start of the study. Study approval was granted by South Central Oxford
220 REC B (Ref: 118784, Ethics number: 12/SC/0713). Study inclusion criteria were: a
221 diagnosis of COPD and admittance to pulmonary rehabilitation. Exclusion criteria
222 were: inadequate understanding of verbal and written English, significant cardiac,
223 psychiatric (including depression under tertiary care) or metabolic disease (including
224 insulin-controlled diabetes), stroke, contraindications to either D-cycloserine (including
225 alcoholism) or magnetic resonance imaging (MRI), epilepsy, claustrophobia, regular
226 therapy with opioid analgesics or home oxygen therapy.

227

228 **Study drug**

229 Participants were randomised in a double-blinded procedure to receive either 250mg
230 oral D-cycloserine or a matched placebo, administered by the study nurse 30 minutes
231 prior to the onset of their first four pulmonary rehabilitation sessions. 250mg dosage
232 has been shown to be efficacious [6, 11]. D-cycloserine exerts its best effects when
233 given immediately before exposure based therapy and only for a limited number of
234 times [20] with daily administration associated with tachyphylaxis [13]. Therefore, the

235 dose timing of D-cycloserine was deliberately selected to be the first four sessions,
236 where the greatest potential for emotional learning occurs as patients become
237 habituated to pulmonary rehabilitation. Study participants, investigators and those
238 performing the analysis were blinded to the treatment allocation. Both D-cycloserine
239 and placebo were over-encapsulated to appear identical.

240 The following minimization criteria were used for randomisation a) centre at which
241 pulmonary rehabilitation was performed, MRC breathlessness grade, presence of
242 diabetes, whether the participant was taking antidepressants, the age at which the
243 participant completed full time education and previous pulmonary rehabilitation. Full
244 details of randomisation can be found within the supplementary materials.

245

246 ***Study visit protocol***

247 Following telephone screening, participants were invited to attend their first research
248 session (baseline) prior to starting pulmonary rehabilitation. A second study visit took
249 place following the fourth pulmonary rehabilitation session but before the sixth session.
250 Participants completed the remainder of their pulmonary rehabilitation course before
251 attending a third study session (Figure 2) that occurred as close to the termination of
252 pulmonary rehabilitation as possible and always within two weeks.

253

254 ***Pulmonary Rehabilitation***

255 Pulmonary rehabilitation courses were run by either Oxford Health NHS Foundation
256 Trust, West Berkshire NHS Foundation Trust, or Milton Keynes University Hospitals
257 NHS Trust.

258

259 ***Self-report questionnaires:***

260 Building on our previous work [4, 21] we selected a set of questionnaires with proven
261 sensitivity to changes across pulmonary rehabilitation [4], which were designed to
262 probe the experience of living with COPD. These were scored according to their

263 respective manuals: Dyspnoea-12 (D12) Questionnaire [22], Centre for Epidemiologic
264 Studies Depression Scale (CES-D) [23], Trait Anxiety Inventory (TRAIT) [24], Fatigue
265 Severity Scale [25], St George's Respiratory Questionnaire (SGRQ) [26], Medical
266 Research Council (MRC) breathlessness scale [27], Mobility Inventory (MI) [28],
267 Breathlessness catastrophising scale, adapted from the Catastrophic Thinking Scale
268 in Asthma [29], Breathlessness vigilance, adapted from the Pain Awareness and
269 Vigilance Scale [30].

270

271 ***Physiological measures:***

272 Spirometry and two Modified Shuttle Walk Tests (MSWT) were collected using
273 standard protocols [31, 32]. Participant height and weight were recorded at each visit.
274 Oxygen saturations and heart rate were measured with pulse oximetry and were
275 collected at rest and following the MSWT.

276

277 ***MRI measures***

278 *Image acquisition:* Magnetic resonance imaging of the brain was carried out using a
279 Siemens 3T MAGNETOM Trio. A T1-weighted (MPRAGE) structural scan (voxel size:
280 1 x 1 x 1 mm) was collected and used for registration purposes. A T2*-weighted,
281 gradient echo planar image (EPI) scan sequence (voxel size: 3 x 3 x 3 mm), TR,
282 3000ms; TE 30ms was used to collect fMRI data.

283

284 *Word cue task:* To probe the neural responses of breathlessness-related expectations
285 we examined the activity of brain regions responding to breathlessness-related word
286 cues [4, 21, 33]. This paradigm has previously been shown to be sensitive to
287 improvements in breathlessness over a course of pulmonary rehabilitation. Brain
288 activity was correlated with corresponding visual analogue ratings of breathlessness
289 and breathlessness-anxiety collected during scanning. [4]. During fMRI scanning,
290 participants were presented with a word cue, e.g., "climbing stairs" in white text on a

291 black background for 7 seconds. Participants were then asked, “how breathless would
292 this make you feel” (wB) and “how anxious would this make you feel” (wA). To each
293 question participants responded within a 7 second window using a button box and
294 visual analogue scale (VAS). The response marker always initially appeared at the
295 centre of the scale, with the anchors “Not at all” and “Very much” at either end. Scan
296 duration was 7 minutes and 33 seconds.

297

298 *Control task:* A validated task of emotional faces was used as a control to separate
299 generalized anxiety from breathlessness specific anxiety. Fearful or happy faces were
300 presented on a black background was used to examine whether any differences in
301 brain activity patterns between D-cycloserine and placebo groups was specific to
302 breathlessness processing. Each face was shown for 500ms in blocks of 30 seconds.
303 A fixation cross was interspersed for 30 seconds between the blocks of faces.
304 Participants were instructed to respond via a button box to indicate facial gender.
305 Reaction time and accuracy were recorded throughout the task. Scan duration was 5
306 minutes and 42 sections.

307

308 **Outcomes**

309 Our primary outcomes focused on brain activity changes within five key regions of
310 interest, identified in previous studies of breathlessness [4, 34]. The regions of the
311 anterior insular cortex, posterior insular cortex, anterior cingulate cortex, amygdala and
312 hippocampus have all been linked to body and symptom perception as well as
313 emotional salience [35, 36]. Focusing on a small number of regions of interest is more
314 statistically powerful and therefore more likely to detect a hypothesised difference.
315 Secondary hypotheses examined the effect of D-cycloserine across a wider region of
316 interest containing fifteen pre-defined brain areas. The fifteen brain areas
317 encompassed regions associated with sensory and affective processing of
318 breathlessness as well as body and symptom perception. regions.

319

320

321 **Analysis**

322 A summary of analyses is outlined here. Full details, including procedures for dealing
323 with missing data and sensitivity analysis can be found within the supplementary
324 materials. Our analysis was pre-registered and made publicly available prior to
325 unblinding

326 <https://mfr.osf.io/render?url=https://osf.io/wqyf4/?action=download%26mode=render>.

327

328 ***Brain imaging analysis***

329 Image processing was carried out using the Oxford Centre for Functional Magnetic
330 Resonance Imaging of Brain Software Library (FMRIB, Oxford, UK; FSL version 5.0.8;
331 <https://www.fmrib.ox.ac.uk/fsl/>), MATLAB R2018b (Mathworks, Natick, MA), R-studio, R
332 version 3.6.1 (2019-07-05). and associated custom scripts. Functional MRI processing
333 was performed using FEAT (fMRI Expert Analysis Tool, within the FSL package).

334

335 Data were pre-processed according to standard protocols before being entered into
336 single subject general linear models. These models captured brain activity during the
337 periods in which the breathlessness-related word cues were presented allowing us to
338 examine expectation-related processes.

339

340 ***Group level analysis***

341 For each patient, the following metrics were extracted from each of the five regions of
342 interest: anterior insula cortex, posterior insula cortex, anterior cingulate cortex,
343 amygdala and hippocampus, at visits one, two and three:

344 1. Mean brain activity in response to breathlessness word-cue presentation

345 2. Mean brain activity for control task of emotional faces

346

347 To test for a drug effect across each metric, the values from visit two were entered into
348 independent linear mixed effects models where they were adjusted for age, gender
349 and scores at visit one. To correct for multiple comparisons across regions,
350 permutation testing (with Family Wise Error Rate (FWE) 5%) was carried out. This
351 process was repeated separately for data collected at visit three. Models were
352 programmed using the lme4 function and permuco package within R version 3.6.1
353 (2019-07-05).

354

355 To test for a drug effect across the larger region of interest (panel B of Supplementary
356 Figure 1), the following voxel-wise information was collected from within the region of
357 interest at visits one, two and three:

- 358 1. Voxel-wise brain activity in response to breathlessness word-cues presentation
- 359 2. Voxel-wise brain activity in response the control task of emotional faces

360

361 Each of the values from visit two were entered into independent general linear model
362 (GLM), controlling for age, gender and scores at visit one. Permutation testing was
363 performed with threshold free cluster enhancement (TFCE) (a non-parametric test)
364 [37] using FSL's Randomise tool [38] at family wise error corrected $p < 0.05$. The
365 process was then repeated separately for data collected at visit three.

366

367

368

369 **Results**
370

371 Of the 91 participants recruited (Figure 1), 72 participants completed all three study
372 visits. Reasons for drop-out or exclusion included illness, scanner error and issues
373 with data quality. One further participant was excluded due to an error in task-data
374 collection. 71 participants were therefore assessed for study objectives. Sensitivity
375 analysis was performed and is reported within supplementary materials.

376

377 **Primary outcomes**

378 There was no significant overall effect of D-cycloserine on mean brain activity within
379 the five key regions of interest of anterior cingulate, anterior insula cortex, amygdala,
380 hippocampus or posterior insula cortex (family wise error rate corrected, $p > 0.05$) at
381 visit two or visit three (Table 2).

382

383 **Secondary outcomes**

384 There was no significant overall effect of D-cycloserine across the broader mask of
385 fifteen regions measured voxel-wise (family wise error rate correct, $p > 0.05$) at visit two
386 or visit three.

387

388 No significant differences in the questionnaire measures or physiology scores were
389 found between the D-cycloserine and placebo groups at any point during the study.

390 No differences were observed between the two groups either in breathlessness ratings
391 (wB) or breathlessness related anxiety (wA) at visit two (both $p = 0.15$ family wise error
392 rate corrected) (Table 3) or visit three (both $p = 0.053$ family wise error rate corrected)
393 (Table 4). No significant effect of drug group was identified, using repeat measured
394 ANOVA's, for the emotional faces control task (collected during fMRI scanning) at visit
395 two ($F(1,68) = 0.17$, $p = 0.68$) or visit three ($F(1,68) = 0.001$, $p = 0.97$). Furthermore, no
396 significant interaction between drug group and emotional valence (happy or fearful

397 faces) was identified at visit two ($F(1,68) = 0.36, p=0.55$) (Table 4) or visit three ($F(1,68)$
398 $= 0.002, p=0.97$) (Table 5). Raw scores are reported in Supplementary Table 4.

399

400 Overall changes in self-report questionnaires over the course of pulmonary
401 rehabilitation were as expected and are presented in Supplementary Table 5.

402

403

404

405

406 **Discussion**

407

408 ***Key Findings***

409 We found that 250mg of D-cycloserine administered prior to the first four sessions of
410 pulmonary rehabilitation showed no effect on breathlessness related brain activity in
411 the 5 regions of interest tested: amygdala, anterior insula, posterior insula, anterior
412 cingulate cortex or hippocampus when assessed either during (after 4-5 sessions) or
413 after the course. Likewise, there was no effect on the secondary endpoints of voxel-
414 wise activity across a wider selection of brain regions. These findings suggest that D-
415 cycloserine does not have the potential to move to phase 3 clinical trials in pulmonary
416 rehabilitation and that alternative drug candidates should be considered.

417

418 This is the first study to test a neuro-pharmacological adjunct to pulmonary
419 rehabilitation. A key strength of this study, in addition to its sample size, which is large
420 for a neuroimaging study of breathlessness, is its use of robust clinical trial
421 methodology which was monitored in accordance with GCP standards. We included a
422 formal sample size calculation powered for validated end points relevant to the patient
423 population, pre-registered the study design and published a statistical analysis plan
424 ahead of unblinding. Additionally, our hypotheses focused on five a-priori defined brain
425 regions with demonstrated evidence of strong modulation by D-cycloserine [9, 39] or
426 links to body, symptom perception as well as emotional salience [35, 36]. Together
427 these steps, which are rarely carried out for neuroimaging studies, ensured rigorous
428 methodology, robust findings and provide the best chance to detect an effect if present.

429

430

431 **Why was no drug effect observed?**

432

433 **D-cycloserine may not have sufficient glutamatergic activity:** While D-cycloserine
434 has not shown sufficient promise to be progressed to full-scale clinical trials, other
435 drugs may now be more attractive candidates. Paired with cognitive therapies as
436 treatment for treatment resistant depression, ketamine and its derivative Esketamine,
437 which blocks pre-synaptic NMDA receptor signalling, increasing glutamate and thereby
438 synaptic plasticity, has been linked with reductions in fear and anxiety , and rapid relief
439 from symptoms [40].

440

441 **Individual differences:** Recent literature has highlighted the importance of individual
442 differences in response to D-cycloserine. New evidence suggests that D-cycloserine
443 has the potential to reinforce either positive or negative experiences during exposure
444 based CBT [17]. Direction of action appears to depend on stress levels, which at the
445 neurochemical level influence neurotransmitter concentrations surrounding the
446 NMDA-receptors [41]. These opposing effects may render brain activity differences
447 unobservable in a simple contrast of means. An excellent example can be observed
448 from a reanalysis of two trials which initially found no-overall effect of D-cycloserine.
449 Yet, when post exposure sessional fear was accounted for, the D-cycloserine group
450 evidenced significantly greater clinical improvement than the placebo group. However,
451 this was only the case if fear was reduced. Where fear was high at the end of a session,
452 the D-cycloserine group actually exhibited less clinical improvement than the placebo
453 group [42].

454

455 **Ceiling effect:** The action of D-cycloserine is known to be curtailed near the
456 therapeutic ceiling [43], and pulmonary rehabilitation is a highly effective treatment [2],
457 this may leave insufficient scope for improvement in some individuals. There is some

458 evidence to suggest that D-cycloserine speeds up therapeutic effects, even after a
459 single session CBT [6]. To account for the high efficacy of pulmonary rehabilitation,
460 and the potential for D-cycloserine to speed up learning, we also analysed brain activity
461 after the first four rehabilitation sessions. Even at this earlier time point we found no
462 effect of D-cycloserine. This result is in line with Rosenfield et al, who in their meta-
463 analysis, discounted number of treatment sessions from their models after it was found
464 to be non-significant [16].

465

466 **Little evidence of D-cycloserine in older adults:** Mechanisms of drug effect may
467 occur via mediated activity within hippocampus, amygdala and insula, regions which
468 overlap with brain networks of internal bodily sensation (interoception) and reappraisal
469 [6, 9, 10]. Given that our previous work, which examined changes in brain activity over
470 a course of pulmonary rehabilitation, identified decreased brain activity within insula
471 correlating with improvements to breathlessness [4], we hypothesised D-cycloserine
472 would work on this body and reappraisal network. However, older adults are not well
473 represented within the evidence base regarding D-cycloserine's action. Given the well-
474 established changes to NMDA receptor function as the brain ages, D-cycloserine may
475 act differently in this population [44].

476

477 **Alternative brain pathways may be more relevant.** Glucocorticoids such as cortisol,
478 combined with exposure-based CBT, have shown promise in reduction of fear in
479 phobias and post-traumatic stress disorder [7] via their action on glucocorticoid
480 receptors along the hypothalamic-pituitary-adrenal (HPA) axis. The exact mechanisms
481 underlying these effects is not yet fully understood, however current evidence points
482 towards either interference with retrieving fearful memories, or enhanced consolidation
483 of the new advantageous memories acquired during extinction [45]. Findings regarding
484 selective serotonin uptake inhibitors (SSRIs) meanwhile are mixed. Paired with CBT,
485 Paroxetine was found to reduce panic attacks by 50% compared to placebo [46].

486 However, a review of wider SSRI literature found that chronic and sub-chronic
487 administration was associated with reduced CBT response, leading to questions as to
488 whether SSRI's may even interfere with CBT effectiveness [45]

489 Collectively these candidate drugs boost synaptic plasticity, although via different
490 neurochemical pathways, which may facilitate the re-setting of fearful associations
491 within the brain. These could be used either during pulmonary rehabilitation, or as part
492 of a precursor programme, helping to recruit harder to reach patients and support self-
493 management. Successful self-management has been highlighted as a key objective
494 by the department of health [47] and often follows on from CBT-based programmes
495 such as the talking therapies recommended by the British Lung Foundation

496

497 **Dosing and dose timing.** Questions do still remain regarding D-cycloserine's
498 optimum dosage, dose timing and number of administered sessions [16]. One recent
499 literature review suggests that up to nine doses, delivered 60-minutes before exposure
500 may yield the best results and increase effect size by up to 50% [16]. Based on the
501 available literature at the time [6, 8] and practical considerations regarding drug
502 availability, we selected a dose of 250mg for this study, administered at the first four
503 rehabilitation sessions. However, given that our maximum effect size was 0.18 (Figure
504 3), even a 50% increase would be below the commonly reported effect sizes of 0.4-
505 0.7, and up to 1.06 [10, 13, 14, 19]. This strongly suggests that dose and dose timing
506 did not drive the negative result.

507

508 **Conclusions**

509 We have shown evidence that D-cycloserine does not have an effect on
510 breathlessness related brain activity, behavioural or physiological measures over the
511 course of pulmonary rehabilitation. This study contributes important information
512 regarding the (un)suitability of D-cycloserine as a candidate for phase 3 clinical trials
513 in pulmonary rehabilitation.

514

515

516 **Acknowledgements**

517 The authors would like to thank Jane Francis and the radiography team at the Oxford
518 Centre for Magnetic Resonance Imaging; Beverly Langford, Eleanor Evans and Anja
519 Hayen for their assistance with data collection; Oxford, Reading and Milton Keynes
520 pulmonary rehabilitation teams with particular thanks to Emma Tucker and Chris
521 Swindale, Katy Beckford and Catherine Darby, Milan Bhattacharya and Louise Worrall
522 and the Oxford Respiratory Trials Unit.

523

524

525 References

526

- 527 1. Garrod, R., et al., *Predictors of success and failure in pulmonary*
528 *rehabilitation*. European Respiratory Journal, 2006. **27**(4): p. 788.
- 529 2. Haave, E. and M. Hyland, *Different short-term and longitudinal results on*
530 *perceived health status for asthma and COPD patients after pulmonary*
531 *rehabilitation. Patients living alone have the largest improvements in*
532 *perceived quality of life*. Chron Respir Dis, 2008. **5**(2): p. 69-73.
- 533 3. Carrieri-Kohlman, V., et al., *Additional evidence for the affective dimension*
534 *of dyspnea in patients with COPD*. Research in Nursing & Health, 2010.
535 **33**(1): p. 4-19.
- 536 4. Herigstad, M., et al., *Treating breathlessness via the brain: changes in brain*
537 *activity over a course of pulmonary rehabilitation*. Eur Respir J, 2017.
538 **50**(3).
- 539 5. Reinecke, A., et al., *Early effects of exposure-based cognitive behaviour*
540 *therapy on the neural correlates of anxiety*. Translational psychiatry, 2018.
541 **8**(1): p. 225-225.
- 542 6. Reinecke, A., et al., *Neurocognitive processes in d-cycloserine augmented*
543 *single-session exposure therapy for anxiety: A randomized placebo-*
544 *controlled trial*. Behaviour Research and Therapy, 2020. **129**: p. 103607.
- 545 7. Singewald, N., et al., *Pharmacology of cognitive enhancers for exposure-*
546 *based therapy of fear, anxiety and trauma-related disorders*. Pharmacol
547 Ther, 2015. **149**: p. 150-90.
- 548 8. Woud, M.L., et al., *Investigating d-cycloserine as a potential*
549 *pharmacological enhancer of an emotional bias learning procedure*. J
550 Psychopharmacol, 2018. **32**(5): p. 569-577.
- 551 9. Klass, A., et al., *d-Cycloserine facilitates extinction learning and enhances*
552 *extinction-related brain activation*. Neurobiol Learn Mem, 2017. **144**: p.
553 235-247.
- 554 10. Nave, A.M., D.F. Tolin, and M.C. Stevens, *Exposure therapy, D-cycloserine,*
555 *and functional magnetic resonance imaging in patients with snake phobia:*
556 *a randomized pilot study*. J Clin Psychiatry, 2012. **73**(9): p. 1179-86.
- 557 11. Onur, O.A., et al., *The N-Methyl-D-Aspartate Receptor Co-agonist D-*
558 *Cycloserine Facilitates Declarative Learning and Hippocampal Activity in*
559 *Humans*. Biological Psychiatry, 2010. **67**(12): p. 1205-1211.
- 560 12. Kiefer, F., et al., *Effects of d-cycloserine on extinction of mesolimbic cue*
561 *reactivity in alcoholism: a randomized placebo-controlled trial*.
562 Psychopharmacology, 2015. **232**(13): p. 2353-2362.
- 563 13. Ressler, K.J., et al., *Cognitive enhancers as adjuncts to psychotherapy: use of*
564 *D-cycloserine in phobic individuals to facilitate extinction of fear*. Arch Gen
565 Psychiatry, 2004. **61**(11): p. 1136-44.
- 566 14. Hofmann, S.G., et al., *Augmentation of exposure therapy with D-cycloserine*
567 *for social anxiety disorder*. Arch Gen Psychiatry, 2006. **63**(3): p. 298-304.
- 568 15. Otto, M.W., et al., *Efficacy of d-cycloserine for enhancing response to*
569 *cognitive-behavior therapy for panic disorder*. Biol Psychiatry, 2010.
570 **67**(4): p. 365-70.
- 571 16. Rosenfield, D., et al., *Changes in Dosing and Dose Timing of D-Cycloserine*
572 *Explain Its Apparent Declining Efficacy for Augmenting Exposure Therapy*

- 573 *for Anxiety-related Disorders: An Individual Participant-data Meta-analysis.*
574 J Anxiety Disord, 2019. **68**: p. 102149.
- 575 17. Hofmann, S.G., *D-cycloserine for treating anxiety disorders: making good*
576 *exposures better and bad exposures worse.* *Depress Anxiety*, 2014. **31**(3):
577 p. 175-7.
- 578 18. Burggren, A. and J. Brown, *Imaging markers of structural and functional*
579 *brain changes that precede cognitive symptoms in risk for Alzheimer's*
580 *disease.* *Brain imaging and behavior*, 2014. **8**(2): p. 251-261.
- 581 19. Guastella, A.J., et al., *A randomized controlled trial of D-cycloserine*
582 *enhancement of exposure therapy for social anxiety disorder.* *Biol*
583 *Psychiatry*, 2008. **63**(6): p. 544-9.
- 584 20. Norberg, M.M., J.H. Krystal, and D.F. Tolin, *A meta-analysis of D-cycloserine*
585 *and the facilitation of fear extinction and exposure therapy.* *Biol Psychiatry*,
586 2008. **63**(12): p. 1118-26.
- 587 21. Herigstad, M., et al., *Dyspnea-related cues engage the prefrontal cortex:*
588 *evidence from functional brain imaging in COPD.* *Chest*, 2015. **148**(4): p.
589 953-961.
- 590 22. Yorke, J., et al., *Quantification of dyspnoea using descriptors: development*
591 *and initial testing of the Dyspnoea-12.* 2010. **65**(1): p. 21-26.
- 592 23. Radloff, L.S., *The CES-D Scale: A Self-Report Depression Scale for Research in*
593 *the General Population.* 1977. **1**(3): p. 385-401.
- 594 24. Spielberger, C.D., *State-Trait Anxiety Inventory*, in *The Corsini Encyclopedia*
595 *of Psychology.* 2010.
- 596 25. Krupp, L.B., et al., *The fatigue severity scale: Application to patients with*
597 *multiple sclerosis and systemic lupus erythematosus.* *Archives of*
598 *Neurology*, 1989. **46**(10): p. 1121-1123.
- 599 26. Jones, P.W., et al., *A self-complete measure of health status for chronic*
600 *airflow limitation. The St. George's Respiratory Questionnaire.* *Am Rev*
601 *Respir Dis*, 1992. **145**(6): p. 1321-7.
- 602 27. Bestall, J.C., et al., *Usefulness of the Medical Research Council (MRC)*
603 *dyspnoea scale as a measure of disability in patients with chronic*
604 *obstructive pulmonary disease.* *Thorax*, 1999. **54**(7): p. 581-586.
- 605 28. Chambless, D.L., et al., *The Mobility Inventory for Agoraphobia.* *Behav Res*
606 *Ther*, 1985. **23**(1): p. 35-44.
- 607 29. De Peuter, S., et al., *Illness-specific catastrophic thinking and*
608 *overperception in asthma.* *Health Psychol*, 2008. **27**(1): p. 93-9.
- 609 30. McCracken, L.M., K.E. Vowles, and C. Eccleston, *Acceptance-based*
610 *treatment for persons with complex, long standing chronic pain: a*
611 *preliminary analysis of treatment outcome in comparison to a waiting*
612 *phase.* *Behav Res Ther*, 2005. **43**(10): p. 1335-46.
- 613 31. Bradley, J., et al., *Validity of a modified shuttle test in adult cystic fibrosis.*
614 *Thorax*, 1999. **54**(5): p. 437-9.
- 615 32. Levy, M.L., et al., *Diagnostic spirometry in primary care: Proposed*
616 *standards for general practice compliant with American Thoracic Society*
617 *and European Respiratory Society recommendations: a General Practice*
618 *Airways Group (GPIAG)1 document, in association with the Association for*
619 *Respiratory Technology & Physiology (ARTP)2 and Education for Health3 1*
620 www.gpiag.org 2 www.artp.org 3 www.educationforhealth.org.uk. *Prim*
621 *Care Respir J*, 2009. **18**(3): p. 130-47.

- 622 33. Herigstad, M., et al., *Development of a dyspnoea word cue set for studies of*
623 *emotional processing in COPD*. *Respiratory physiology & neurobiology*,
624 2016. **223**: p. 37-42.
- 625 34. Esser, R.W., et al., *Brain Activation during Perception and Anticipation of*
626 *Dyspnea in Chronic Obstructive Pulmonary Disease*. *Frontiers in*
627 *physiology*, 2017. **8**: p. 617-617.
- 628 35. Craig, A.D., *How do you feel--now? The anterior insula and human*
629 *awareness*. *Nat Rev Neurosci*, 2009. **10**(1): p. 59-70.
- 630 36. Faull, O.K., A. Hayen, and K.T.S. Pattinson, *Breathlessness and the body:*
631 *Neuroimaging clues for the inferential leap*. *Cortex; a journal devoted to*
632 *the study of the nervous system and behavior*, 2017. **95**: p. 211-221.
- 633 37. Nichols, T.E. and A.P. Holmes, *Nonparametric permutation tests for*
634 *functional neuroimaging: A primer with examples*. *Human Brain Mapping*,
635 2002. **15**(1): p. 1-25.
- 636 38. Winkler, A.M., et al., *Permutation inference for the general linear model*.
637 *Neuroimage*, 2014. **92**: p. 381-97.
- 638 39. Thompson, L.T., J.R. Moskal, and J.F. Disterhoft, *Hippocampus-dependent*
639 *learning facilitated by a monoclonal antibody or D-cycloserine*. *Nature*,
640 1992. **359**(6396): p. 638-641.
- 641 40. Ziffra, M., *Panic disorder: A review of treatment options*. *Ann Clin*
642 *Psychiatry*, 2021. **33**: p. 124-33.
- 643 41. Schade, S. and W. Paulus, *D-Cycloserine in Neuropsychiatric Diseases: A*
644 *Systematic Review*. *The international journal of*
645 *neuropsychopharmacology*, 2016. **19**(4): p. pyv102.
- 646 42. Smits, J.A.J., et al., *D-cycloserine enhancement of exposure therapy for social*
647 *anxiety disorder depends on the success of exposure sessions*. *Journal of*
648 *psychiatric research*, 2013. **47**(10): p. 1455-1461.
- 649 43. Choi, D.C., et al., *Pharmacological Enhancement of Behavioral Therapy:*
650 *Focus on Posttraumatic Stress Disorder*, in *Behavioral Neurobiology of*
651 *Anxiety and Its Treatment*, M.B. Stein and T. Steckler, Editors. 2010,
652 Springer Berlin Heidelberg: Berlin, Heidelberg. p. 279-299.
- 653 44. Kumar, A. and T.C. Foster, *Alteration in NMDA Receptor Mediated*
654 *Glutamatergic Neurotransmission in the Hippocampus During Senescence*.
655 *Neurochemical Research*, 2019. **44**(1): p. 38-48.
- 656 45. Reinecke, A. and C.J. Harmer, *A Cognitive-Neuropsychological Account of*
657 *Treatment Action in Anxiety: Can We Augment Clinical Efficacy?*
658 *Psychopathology Review*, 2016. **a3**(1): p. 77-109.
- 659 46. Oehrberg, S., et al., *Paroxetine in the Treatment of Panic Disorder a*
660 *Randomised, Double-Blind, Placebo-Controlled Study*. *British Journal of*
661 *Psychiatry*, 1995. **167**(3): p. 374-379.
- 662 47. Health, D.o., *An Outcomes Strategy for Chronic Obstructive Pulmonary*
663 *Disease (COPD) and Asthma*. 2011.
- 664
- 665

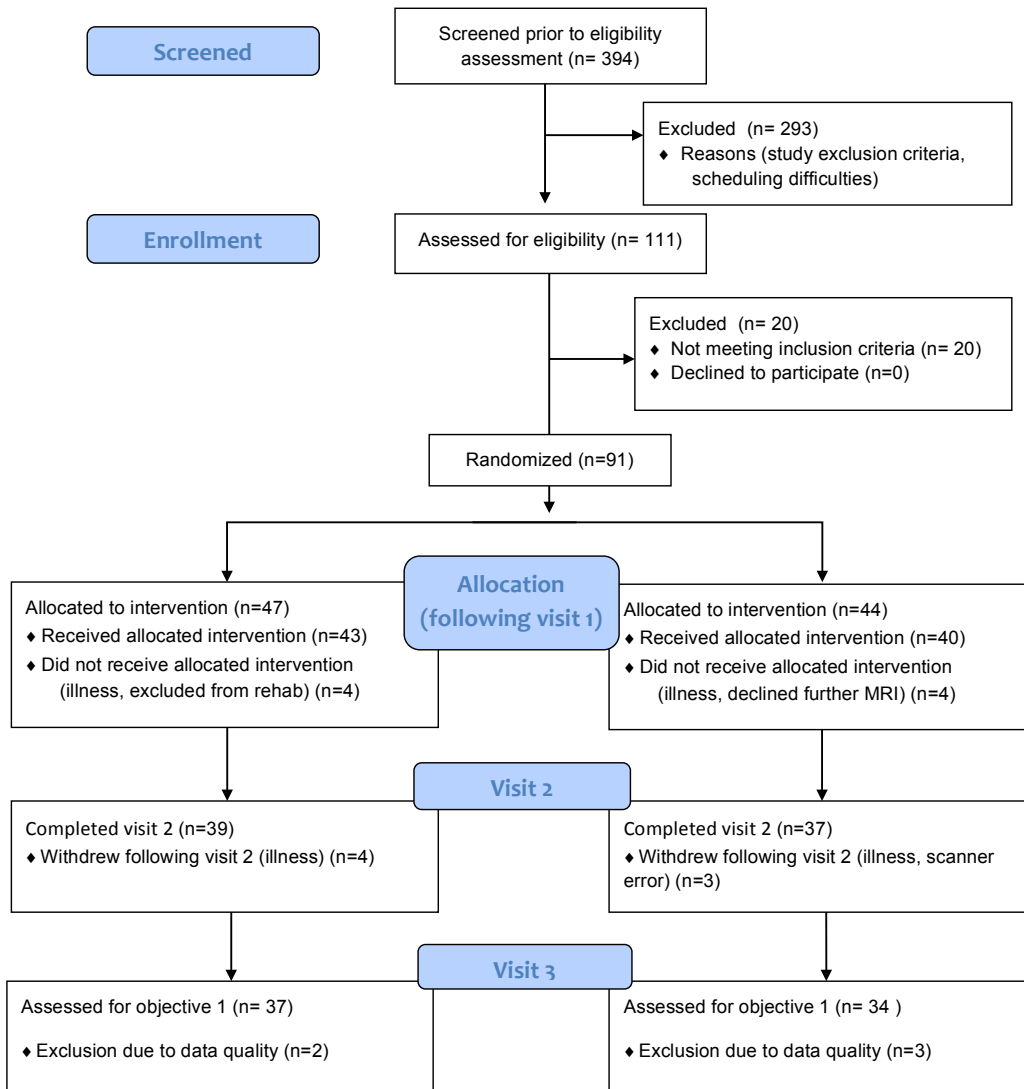
666 **FIGURES LEGENDS**

667

668 **Figure 1.** Consort diagram illustrating stages of participant recruitment from initial screening

669 through to completion at visit 3.

670



671

672

673

674

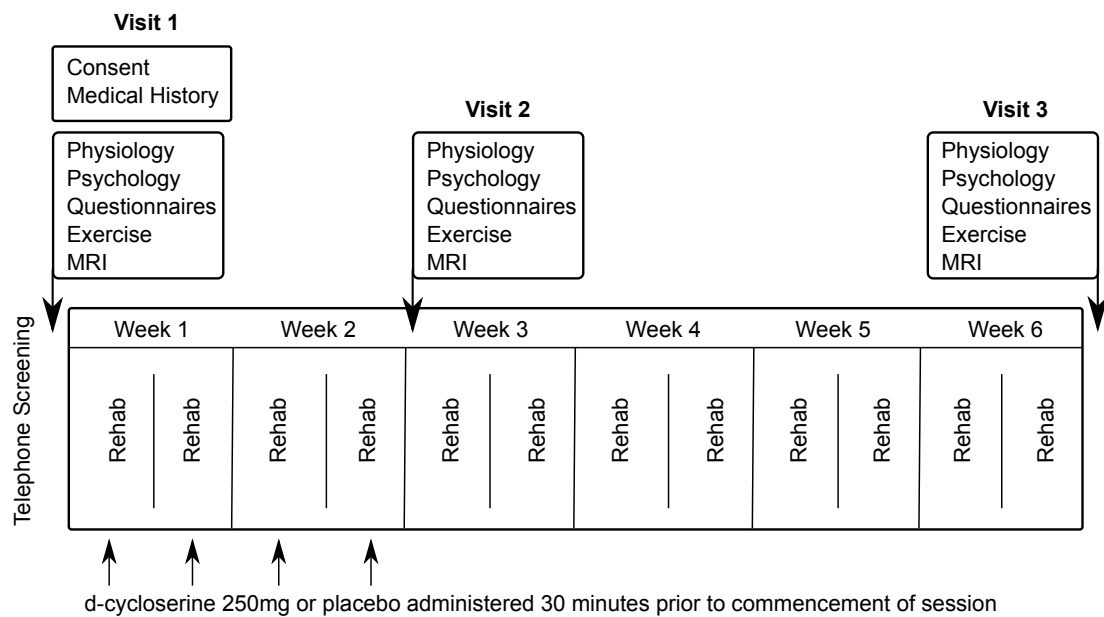
675

676

677

678

679 **Figure 2.** A schematic demonstrating order of visits, rehabilitation sessions and tablet
680 administration throughout the study period. Participants took part in one study visit prior to their
681 first pulmonary rehabilitation session. Study drug/placebo were administered on four occasions
682 over the first four rehabilitation sessions. A second study visit occurred after the final
683 drug/placebo administration. Participants continued with their pulmonary rehabilitation course
684 for a further four weeks before returning for a third study visit.
685



686

687

688

689

690

691

692

693

694

695

696

697

698

699

700

701

702

703

704

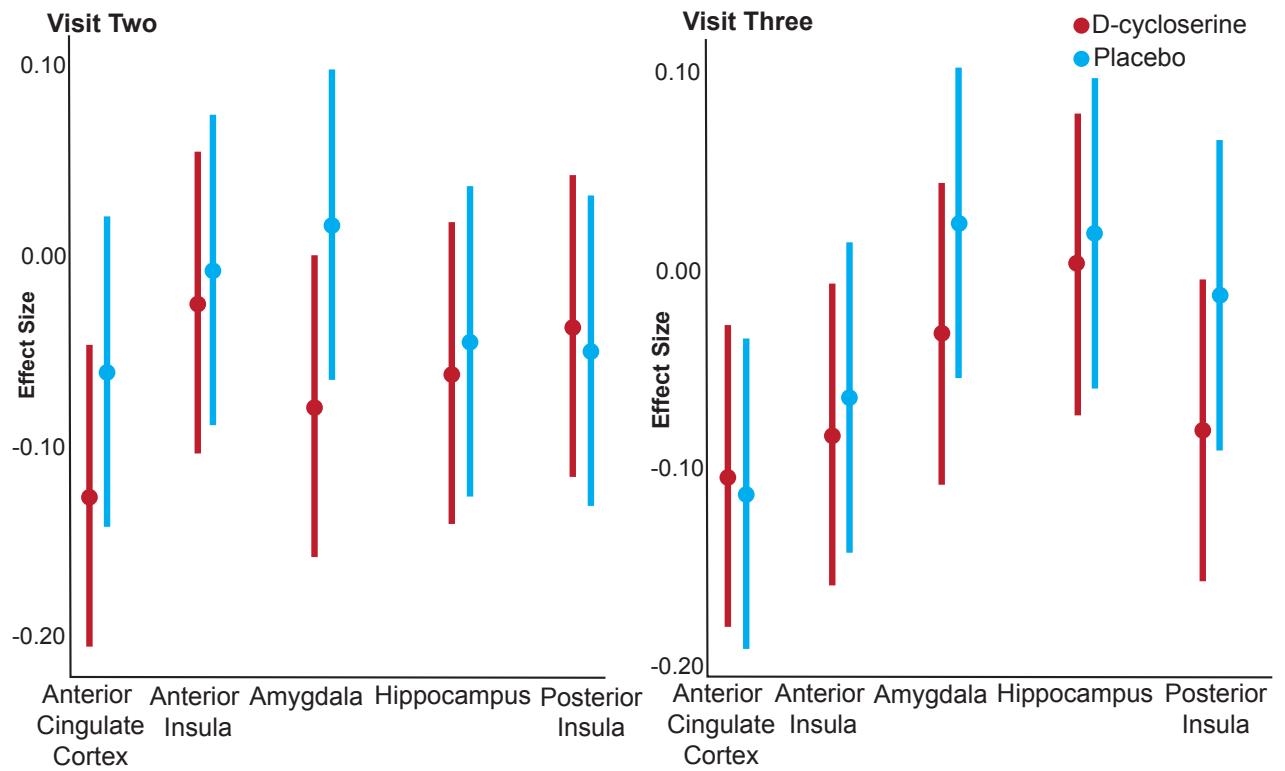
705

706

707

708

709 **Figure 3.** Effect sizes and confidence intervals for each of the five regions of interest at visits
710 two and three for D-cycloserine and Placebo groups.
711



712

713 **TABLES**

714

715 **Table 1.** Demographic information from the 72 participants who completed all three study visits.

716 Variance is expression either in terms of standard deviation (SD) or interquartile range (IQR)

717 depending on the normality of the underlying data distribution. **BMI** = Body Mass Index, **MRC**

718 = Medical Research Council. **SpO₂%** = Peripheral Oxygen saturation, expressed as a

719 percentage. **FEV** = Forced Expiratory Volume. **FVC** = Forced Vital Capacity. Also listed with

720 prevalence in brackets are recorded comorbidities ordered by frequency

	Visit 1	
	(Pre-rehabilitation)	
	D-cycloserine	Placebo
Age (median years / range)	71.0 / (47-81)	71.5 / (46-85)
Smoking pack-years (years / IQR)	34.0 / (25.6)	30.0 / (30.0)
Duration of breathlessness (years / IQR)	8.0 (17.0)	9.5 (10.0)
Total exacerbations (number / IQR)	0.0 (1.0)	1.0 (2.3)
BMI (kg.m ⁻² ± SD)	27.3 ± 6.5	26.9 ± 5.7
MRC breathlessness scale (IQR)	3.0 (1)	2.5 (1)
Resting SpO ₂ % (IQR)	95 / (3.3)	95 / (3.0)
Resting heart rate (beats.min ⁻¹ ± SD)	80.8 ± 13.4	80.8 ± 14.9
FEV ₁ /FVC (IQR)	0.53 / (0.17)	0.56 / (0.13)
	Comorbidities (frequency)	
	Asthma (14)	Asthma (11)
	Hypertension (13)	Hypertension (11)
	Gastro-oesophageal reflux (10)	Gastro-oesophageal reflux (12)
	Swelling of both ankles (11)	Swelling of both ankles (8)
	Surgery to the chest (6)	Surgery to the chest (7)
	Depression (6)	Depression (2)
	Diabetes (3)	Diabetes (6)
	Heart attack (4)	Heart attack (5)
	Bronchiectasis (3)	Bronchiectasis (4)
	Osteoporosis (2)	Osteoporosis (4)
	Arrhythmia (3)	Arrhythmia (4)
	Inflammatory bowel disease (2)	Inflammatory bowel disease (3)
	Peptic ulcer (3)	Peptic ulcer (2)
	Heart failure (1)	Heart failure (1)
	Tuberculosis (1)	Neuromuscular weakness (2)

721

722 **Table 2.** Significance of overall effect of D-cycloserine on mean brain activity within the five key
723 regions of interest at visits two, having accounted for scores at visit one. Significance is reported
724 as Family Wise Error ($p < 0.05$) corrected p-values of the difference

Region of interest	Estimate	Std. Error	Visit two (p-value)
Anterior cingulate cortex	0.066	0.059	0.70
Anterior insula	0.019	0.058	0.98
Amygdala	0.097	0.059	0.40
Hippocampus	0.018	0.058	0.98
Posterior insula	-0.013	0.059	0.98

725

726

727 **Table 3.** Significance of overall effect of D-cycloserine on mean brain activity within the five key
728 regions of interest at visits three, having accounted for scores at visit one. Significance is
729 reported as Family Wise Error ($p < 0.05$) corrected p-values of the difference

Region of interest	Estimate	Std. Error	Visit three (p-value)
Anterior cingulate cortex	-0.009	0.056	0.98
Anterior insula	0.019	0.055	0.98
Amygdala	0.055	0.056	0.78
Hippocampus	0.014	0.056	0.98
Posterior insula	0.068	0.056	0.70

730

731

732

733

734

735

736

737

738
739
740
741
742
743
744
745
746
747
748
749

Table 4. Scores on questionnaire, behavioural and physiological measures for drug and placebo group during (visit two). Measures are expressed as a “change score”. Values are calculated as baseline visit (visit one) minus the later visit, thus positive values indicate an improvement or, in the case of the faces task, a faster reaction time (ms). Significance is reported as Family Wise Error ($p < 0.05$) corrected p-values of the difference in scores between drug and placebo groups at visit two, accounting for scores at visit one. Values are either recorded as mean and standard deviation (1) or as median and interquartile range (2) depending on the normality of distribution. **BMI** = Body Mass Index, **MRC** = Medical Research Council clinical measure of breathlessness, **MSWT** = Modified Shuttle Walk Test, **HR** = Heart rate, **Sats** = Peripheral Oxygen saturation, expressed as a percentage

	Visit Two		p-value
	D-cycloserine	Placebo	
Catastrophising	1.0 (5.3) ²	2.0 (4.0) ²	0.84
Depression	1.2 ± 6.4 ¹	3.2 ± 5.4 ¹	0.55
D12	3.8 ± 5.4 ¹	2.2 ± 4.7 ¹	0.55
Fatigue	7.0 (12.3) ²	4.5 (12.0) ²	0.64
BMI	-0.16 (0.6) ²	0.0 (0.6) ²	0.55
MRC	0 (0.5) ²	0 (0.0) ²	0.85
MSWT Distance (m)	0.0 (111.3) ²	5.0 (70) ²	0.85
MSWT Borg Start	0 (1) ²	0 (1) ²	0.85
MSWT Borg Change	0.5 (1.5) ²	0.5 (2) ²	0.85
MSWT HR Start	-0.30 ± 13.9 ¹	1.4 ± 13.2 ¹	0.85
MSWT HR Change	-45.4 ± 23.0 ¹	-47.5 ± 25.4 ¹	0.90
MSWT Sats Start	-0.30 ± 2.2 ¹	-0.1 ± 2.2 ¹	0.85
MSWT Sats Change	0 (5) ²	0 (4.0) ²	0.91
Vigilance	3.8 ± 10.6 ¹	1.8 ± 13.6 ¹	0.85
FEV1/FVC	0 (0.1) ²	0 (0.1) ²	0.55
Avoidance – Alone	0.1 (0.4) ²	0.1 (0.2) ²	0.91
Avoidance -Accompanied	0.0 (0.3) ²	0.1 (0.2) ²	0.55
St George – Active	6.7 (10.6) ²	3.3 (12.8) ²	0.55
St George – Impact	4.3 ± 7.7 ¹	1.5 ± 8.1 ¹	0.55
St George – Symptom	4.0 ± 11.5 ¹	4.3 ± 10.7 ¹	0.92
Trait	4.0 (5.5) ²	1.0 (7.0) ²	0.55
Breathlessness Anxiety (wA)	0.4 (29.0) ²	5.0 (17.8) ²	0.15
Breathlessness Severity (wB)	-0.4 ± 21.3 ¹	9.2 ± 23.1 ¹	0.15
Fearful Faces (ms)	5.2 (116.5)	-13.5 (73.0)	
Happy Faces (ms)	12.1 (112.8)	-1.9 (106.9)	
Main effect of drug group	F(1,68) = 0.17, p=0.68		
Interaction drug group:emotion	F(1,68) = 0.36, p=0.55		

750
751
752
753
754

755 **Table 5.** Scores on questionnaire, behavioural and physiological measures for drug and
 756 placebo group following pulmonary rehabilitation (visit three). Measures are expressed as a
 757 “change score”. Values are calculated as baseline visit (visit one) minus the later visit, thus
 758 positive values indicate an improvement or, in the case of the faces task, a faster reaction time
 759 (ms). Significance is reported as Family Wise Error ($p < 0.05$) corrected p -values of the
 760 difference in scores between drug and placebo groups at visit three, accounting for scores at
 761 visit one. Values are either recorded as mean and standard deviation (1) or as median and
 762 interquartile range (2) depending on the normality of distribution. **BMI** = Body Mass Index, **MRC**
 763 = Medical Research Council clinical measure of breathlessness, **MSWT** = Modified Shuttle
 764 Walk Test, **HR** = Heart rate, **Sats** = Peripheral Oxygen saturation, expressed as a percentage.
 765

	Visit Three		
	D-cycloserine	Placebo	p-value
Catastrophising	3.0 (7) ²	4.5 (8) ²	0.86
Depression	3.1 ± 6.6 ¹	4.7 ± 5.3 ¹	0.86
D12	3.0 (8.3) ²	2.5 (8) ²	0.86
Fatigue	9.7 ± 12.5 ¹	5.7 ± 12.0 ¹	0.86
BMI	0.0 (0.8) ²	-0.1 (0.9) ²	0.86
MRC	0 (1) ²	0 (1) ²	0.86
MSWT Distance (m)	40 (92.5) ²	30 (70) ²	0.86
MSWT Borg Start	0 (0.5) ²	0 (1) ²	0.86
MSWT Borg Change	0.1 ± 1.9 ¹	-0.1 ± 1.6 ¹	0.86
MSWT HR Start	2.7 ± 10.4 ¹	2.4 ± 13.5 ¹	0.98
MSWT HR Change	-51 (29.3) ²	-53.5 (27) ²	0.86
MSWT Sats Start	0.0 (2) ²	0.0 (3) ²	0.86
MSWT Sats Change	-1 (7) ²	0 (3) ²	0.86
Vigilance	5.0 (12) ²	5.5 (12) ²	0.86
Spirometry	0 (0.1) ²	0 (0.1) ²	0.86
Avoidance – Alone	0.1 (0.3) ²	0.1 (0.3) ²	0.98
Avoidance - Accompanied	0.0 (0.3) ²	0.1 (0.3) ²	0.86
St George – Active	6.0 (15.1) ²	6.2 (13.4) ²	0.86
St George – Impact	5.1 (12.7) ²	5.0 (8.6) ²	0.86
St George – Symptom	6.5 ± 12.5 ¹	6.4 ± 12.7 ¹	0.97
Trait	2.7 ± 5.8 ¹	3.3 ± 7.6 ¹	0.86
Breathlessness Anxiety (wA)	3.0 (7.0) ²	7.3 (16.8) ²	0.053
Breathlessness Severity (wB)	3.1 (15.6) ²	8.4 (13.1) ²	0.053
Fearful Faces (ms)	-0.2 (70.7)	-58.2 (88.4)	
Happy Faces (ms)	-10.5 (126.7)	-43.5 (106.4)	
Main effect of drug group	F(1,68) = 0.001, p=0.97		
Interaction drug group:emotion	F(1,68) = 0.002, p=0.97		