

Taiwan on track to end third COVID-19 community outbreak

Torbjörn E. M. Nordling and Yu-Heng Wu

Department of Mechanical Engineering, National Cheng Kung University, No. 1 University Road, Tainan City 701, Taiwan

2021-06-17

Abstract

Since the start of the COVID-19 pandemic on December 31st, 2019, with the World Health Organization being notified of pneumonia of unknown cause in Wuhan (China), Taiwan has successfully ended two COVID-19 community outbreaks. For 19 days, the third community outbreak has now been successfully suppressed, putting Taiwan on path to end it too around Aug. 16th based on our forecast using an exponential model. Since May 28th the 7-day average of reported confirmed infected, which peaked at 593, has been falling to 204 on June 16th and the 7-day average of reported suspected and excluded cases increased to above 25 000. Resulting in a decrease in the ratio of the 7-day average of local & unknown confirmed to suspected cases—the identified control variable—to less than one third of its peak value. The later is a hallmark of working contact tracing, which together with testing and isolation of infected are the keys to ending the community outbreak.

Introduction

The first outbreak started a little before February 16th and ended April 11th, 2020 (54 days), see Figure 1a. The second outbreak started a little before January 12th and ended February 9th, 2021 (27 days). The third outbreak started a little before April 20th and is still ongoing (56 days), but shows clear signs of having peaked on May 28th. The record of 721 confirmed locally or unknown acquired infections in a day was reported on May 22nd. Between the first and second outbreak Taiwan saw a period with 273 days without any reported local infection, excluding an isolated case of unknown source reported August 2nd and a local case reported December 22nd. Between the second and third outbreak Taiwan had 69 days without any reported local infection.

Results and Discussion

From June 2020 until the current outbreak, life in Taiwan was pre-pandemic, except for the mandatory mask and temperature checks in the public transportation introduced on March 31st¹ and at large events. Large events with tens of thousands of visitors have been held, such as the Mayday New Year's Eve pop concert at Taoyuan International Baseball Stadium on December

31st². Both the 2nd and 3rd outbreak involved the alpha variant (B.1.1.7), which Hsu et al.³ estimated to have a 1.44-fold higher infection probability and 57% higher basic reproduction number based on household transmissions during the 1st and 2nd outbreak, in agreement with previous estimates of 43-90%⁴. Evidently, the measures in place to reduce transmissibility and prevent a large scale outbreak were not sufficient, so Taiwan should have had a surge in cases if community transmission existed during the two periods without local infections. In addition, the National Health Insurance Administration (NHIA) has proactively been seeking out patients with severe respiratory symptoms in its database and allowing all hospitals, clinics, and pharmacies to see the patients' travel history obtained from the National Immigration Agency from February 18th, 2020 onwards⁵. The current outbreak has been traced to a cluster of infected China Airline pilots and the Novotel at Taoyuan International Airport violating the quarantine rules by housing quarantined flight crews and local guests in the same building^{6,7}. This initial failure of the mandatory quarantine at the boarder and contact tracing during the current outbreak combined with the success of contact tracing during the 2nd outbreak and the transmissibility reduction measures remaining the same, implies that Taiwan's success is due to border control and tracing of contacts upon suspicion. Thus we can finally with confidence say that Taiwan has ended two community outbreaks thanks to contact tracing, testing, and isolation.

The Taiwanese COVID-19 control strategy implemented by the Central Epidemic Command Center (CECC), activated on January 20th, 2020⁵, is based on six main pillars: (a) border control with quarantine upon arrival, (b) self-health monitoring when having visited a place with known cases, (c) testing when showing symptoms and seeking medical care, (d) mandatory supervised quarantine of confirmed infected and individuals at high-risk of having been infected, (e) contact tracing, and (f) a four-level system of measures to suppress community spreading. These are devised to control the effective reproduction number, i.e. the expected number of people an infected individual will transmit the disease to while infectious. The reproduction number can be seen as the transmission risk per contact (transmissibility), times the number of contacts per day, times the number of days the person is infectious. From June 7th until May 11th no restrictions on the size of gatherings, i.e. curbing of the number of contacts, existed^{8,7}. The current level 3 measures in place since May 19th, consist of mandatory wearing of masks at all times outside private spaces and social distancing, which reduce the transmissibility; indoor gatherings limited to five people and closure of certain businesses, partly including schools and preschools, which reduce the number of contacts; and mandatory COVID-19 testing in areas where community transmission has taken place, which reduces the number of days an infected person can transmit the disease before being quarantined^{9,10}. As demonstrated by numerous countries, such as the United Kingdom and United States, community suppression measures, such as lockdowns, alone do not end a community outbreak. As soon as these non-pharmacological interventions (NPIs) are lifted the reproduction number will increase again, so why do we claim that Taiwan is on track to ending this community outbreak?

In short, the ratio of the 7-day moving average of confirmed infected to suspected has already fallen to less than one third of the peak value of 0.029 on May 28th, while the number of daily suspected has increased to above 25 000, and the ratio of the 7-day moving average of excluded to suspected is slightly above one, which is needed to resolve the backlog from when it was down at 0.37. In other words, the contact tracing, testing, and isolation of infected has, after initial failure and challenges, successfully been scaled up to the required volume of around 25 000 suspected per day and the number of confirmed infected is decreasing. The same pattern has been repeated during all three outbreaks: first the number of confirmed infected increase rapidly and the contact tracing, testing, and exclusion of cases lags, then focus on contact tracing brings up the number of suspected and investment into expanding testing clears the backlog, see Figure 1b-g. Thus the key to ending an outbreak is to focus on contact tracing to bring up

the number of suspected and increase testing and isolation/care capacity. The focus on contact tracing and bringing up the number of suspected is key because one need to prevent every infected person from infecting a new person to end the outbreak. It makes the ratio of confirmed infected to suspected the essential metric to follow. The Lancet Commission Task Force on public health measures to suppress the pandemic also report on the effectiveness of contact tracing and quarantine measures, albeit not on its use to end outbreaks¹¹. Since May 19th, Taiwan has implemented an SMS text message contact tracing system based on each person upon entry in each business scanning a place specific QR code that generates a unique SMS sent to 1922—the Taiwan Center for Disease Control hotline¹², which helps scale the contact tracing. This data tells us that the contact tracing, testing, and isolation capacity has been scaled to the required level. Therefore, it is not a question of if the outbreak can be ended but a question of when it will be ended. It is a matter of keeping up the work until this outbreak also is brought to an end. To keep up the work requires will—will from everyone to contribute to the contact tracing, self-health monitoring, testing, and caring of each other. To have will, one need to believe that it can be done, therefore it is vital to get this message to everyone: Together we can and will also end this outbreak.

The two extensions of the level 3 measures have made some ask if vaccination is necessary to end this outbreak? Of the only three countries, with a population over 1 million, that have vaccinated over half their population, both Bahrain and Mongolia in the past week reported over 5 000 confirmed infected, while Israel reported a mere 117 infected¹³. Actually, both Bahrain and Mongolia have set new records in the weekly number of confirmed infected within the previous three weeks. Israel only recently, on June 1st, lifted most restrictions, including limitations on the number of people at gatherings and proof of vaccination to enter e.g. gyms, theatres, hotels, and synagogues, and have kept border controls¹⁴. In a recent simulation study, Moghadas et al.¹⁵ predict that if all unvaccinated individuals in the United States revert to pre-pandemic life on July 4th, then it would result in the worst daily incidence of COVID-19 cases despite assuming close to 70% being vaccinated, but if only the vaccinate individuals revert, then it result in a minimal increase even if they revert two weeks after the first dose. Based on the recent estimate of the basic reproduction number without NPIs in Taiwan during the second outbreak at 6.7^3 , 85% of the Taiwanese population would need to be vaccinated to reach herd immunity. Considering the difficulties the Taiwanese government has faced in purchasing COVID-19 vaccines, it is unlikely that Taiwan could implement a population scale vaccination program and reach herd immunity any faster than other nations. A population wide vaccination campaign is likely to take a year before it could end this community outbreak, while the proven method of contact tracing, testing, and isolation is likely to end it around Aug. 16th. We forecast this end date based on fitting an exponential model to the daily ratios of the 7-day moving average of confirmed infected to suspected from the peak of 0.029 on May 28th to 0.0077 on June 16th. The calculated non-simultaneous prediction bounds on a new observation with 95% confidence puts the earliest end date on July 2nd and the latest indefinitely into the future, see Figure 2. The predicted half-time is 9.9 days (95% confidence interval: 9.1-10.8). We therefore encourage all Taiwanese to be hopeful and remain vigilant; the end around Aug. 16th is only two months away.

Conclusion

As soon as this outbreak is ended, we hope the world would take notice and learn from the Taiwanese strategy, so unnecessary suffering and deaths can be avoided. Like Wang et al.⁵, we think “Taiwan is an example of how a society can respond quickly to a crisis and protect the interests of its citizens.”

Methods

To limit the influence of reporting differences between the week days and fluctuations in when cases are reported to the Taiwan CDC, we use the 7-day moving mean calculated over the past seven days. It is worth noting that our moving mean cover the mean serial interval, which was estimated to 6.2 days among the 42 infector-infectee pairs during the 1st outbreak¹⁸.

To forecast when the current third community outbreak will end, we assumed that the decrease in the ratio of local & unknown confirmed to suspected cases can be described as an exponential growth process. More precisely, we assumed the model

$$f(x) = a \cdot 2^{-b \cdot x}, \quad (1)$$

where a is the initial value and the reciprocal of b is the half-time. We fitted this model to the ratio of the 7-day moving mean of local & unknown confirmed to the 7-day moving mean of suspected cases from the peak on 2021-05-28 to 2021-06-16, i.e. 19 time points, using the Curve Fitting Toolbox in Matlab R2015b by MathWorks using the "NonlinearLeastSquares" estimator. The root mean squared error of the model fitted to the data points was 0.0011 and adjusted R-squared 0.97, indicating a good fit that explains the data well. The estimated parameters are a 0.029 (95% confidence bounds 0.028 - 0.030) and b 0.10 (95% confidence bounds 0.09 - 0.11). The later corresponds to a halving of the ratio every 9.9 days (95% confidence bounds 9.1 - 10.8 days). The previous two outbreaks have ended after the ratio has been brought down to $1.2 \cdot 10^{-4}$, see Figure 2, so we assume that the same is required to end this outbreak. Note that the length of the window of our moving mean and the baseline number of suspected affects this ratio. When only one confirmed infected remains, the nominator will be 0.14, i.e. 1/7, and the denominator then need to be around 1200, i.e. on average 1200 suspected each day for the last confirmed infected. The mean 7-day moving mean number of suspected between the 1st and 2nd outbreak was 324 and between the 2nd and 3rd outbreak it was 684. By extrapolation we forecast that this ratio would be reached on 2021-08-16 after required six halvings. This forecast depends on the contact tracing, testing, and isolation being equally effective as during the past three weeks and no new local clusters emerging from people infected abroad. The calculated non-simultaneous prediction bounds on a new observation with 95% confidence, drawn as black dashed lines in Figure 2, puts the earliest end date on July 2nd and the latest indefinitely into the future. The later in agreement with a failure to execute the contact tracing, testing, and isolation or new local clusters emerging from people infected abroad.

Acknowledgements

The authors acknowledges valuable discussions, help with presentation, and comments from Dr. Akram Ashyani, Dipesh Dhayfule, and Jose Chang.

Funding

This study was supported by Ministry of Science and Technology, Taiwan (MOST 109-2224-E-006-003, 109-2740-B-006-001). The funding has covered a stipend to Yu-Heng Wu and general lab expenses. The funding institution has not been involved in this study.

Disclosure statement

The authors have nothing to disclose.

Declaration of competing interest

The authors have no conflicts of interest relevant to this article.

Contribution statement

TEMN did conceptualisation, funding acquisition, methodology, project administration, resources, supervision, and writing of the original draft. YHW did investigation, data curation, formal analysis, and software development. Both did data validation, visualisation, and review & editing of the final manuscript.

Data

All COVID-19 data were collected from the Taiwan Centers for Disease Control (Taiwan CDC), which provided an online platform for downloading datasets, including respiratory syndrome coronavirus-2 (SARS-CoV-2) infection data¹⁶. Both data downloaded from the online platform and manually extracted from their News Bulletins¹⁷ were used. All data used is for the readers convenience also included in the Appendix.

Bibliography

- [1] Hsiao YH, Hetherington W. Virus Outbreak: Masks required for train passengers. Taipei, Taiwan: The Taipei Times; 2020. Available from: <https://www.taipeitimes.com/News/taiwan/archives/2020/04/01/2003733786>.
- [2] Taiwan News. 5 Taiwanese attend Mayday concert despite self-monitoring for COVID. Taipei, Taiwan: Taiwan News; 2021. Available from: <https://www.taiwannews.com.tw/en/news/4091789>.
- [3] Hsu CY, Wang JT, Huang KC, Fan ACH, Yeh YP, Chen SLS. Household transmission but without the community-acquired outbreak of COVID-19 in Taiwan. *Journal of the Formosan Medical Association = Taiwan yi zhi*. 2021 may;.
- [4] Davies NG, Abbott S, Barnard RC, Jarvis CI, Kucharski AJ, Munday JD, et al. Estimated transmissibility and impact of SARS-CoV-2 lineage B. 1.1. 7 in England. *Science*. 2021;372(6538).
- [5] Wang CJ, Ng CY, Brook RH. Response to COVID-19 in Taiwan. *JAMA*. 2020 apr;323(14):1341. Available from: <https://jamanetwork.com/journals/jama/fullarticle/2762689>.
- [6] Zennie M. How a False Sense of Security, and a Little Secret Tea, Broke Down Taiwan's COVID-19 Defenses. Taipei, Taiwan: Time; 2021. Available from: <https://time.com/6050316/taiwan-covid-19-outbreak-tea/>.
- [7] Yeh J. CORONAVIRUS/Worried by rise in COVID-19 cases, Taiwan bans large scale gatherings. Taipei, Taiwan: Central News Agency; 2021. Available from: <https://focustaiwan.tw/society/202105110007>.

- [8] Lee IC. Virus Outbreak: CECC urges vigilance as curbs eased. Taipei, Taiwan: The Taipei Times; 2020. Available from: <https://www.taipeitimes.com/News/front/archives/2020/06/08/2003737829>.
- [9] Chiang Hc, Chen Cl, Yeh J. CORONAVIRUS/Level 3 COVID-19 alert introduced across Taiwan (Update). Taipei, Taiwan: Central News Agency; 2021. Available from: <https://focustaiwan.tw/society/202105190017>.
- [10] Everington K. Taiwan's 4 epidemic warning levels. Taipei, Taiwan: Taiwan News; 2021. Available from: <https://www.taiwannews.com.tw/en/news/4203460>.
- [11] Lee JK, Bullen C, Ben Amor Y, Bush SR, Colombo F, Gaviria A, et al. Institutional and behaviour-change interventions to support COVID-19 public health measures: a review by the Lancet Commission Task Force on public health measures to suppress the pandemic. *International health*. 2021 may;.
- [12] Hu C. How to use SMS contact tracing system, powered by Audrey Tang, to enter every store; 2021. Last visited on 2021-06-15. Available from: <https://meet-global.bnext.com.tw/articles/view/47383>.
- [13] Johns Hopkins University of Medicine CRC. Understanding vaccination progress; 2021. Last visited on 2021-06-15. Available from: <https://coronavirus.jhu.edu/vaccines/international>.
- [14] Staff T. Back to normal: Israel lifts nearly all COVID restraints as virus fades away. Jerusalem, Israel: The Times of Israel; 2021. Available from: <https://www.timesofisrael.com/back-to-normal-israel-lifts-nearly-all-covid-restraints-as-virus-fades-away/>.
- [15] Moghadas SM, Sah P, Vilches TN, Galvani AP. Can the USA return to pre-COVID-19 normal by July 4? *The Lancet Infectious Diseases*. 2021 jun; Available from: <https://linkinghub.elsevier.com/retrieve/pii/S1473309921003248>.
- [16] Taiwan Centers of Disease Control. Taiwan Centers of Disease Control - Datasets; 2021. Last visited on 2021-06-17. Available from: <https://data.cdc.gov.tw/en/dataset>.
- [17] Taiwan Centers of Disease Control. Taiwan Centers of Disease Control - News Bulletin; 2021. Last visited on 2021-06-17. Available from: <https://www.cdc.gov.tw/Bulletin/List/MmgtpeidAR50oai4-fgHzQ>.
- [18] Chen YC, Yang HP, Li HC, Huang PY, Chen CL, Chiu CH. Features and transmission dynamics of SARS-CoV-2 superspreading events in Taiwan: Implications for effective and sustainable community-centered control. *Pediatrics and neonatology*. 2021 may;.

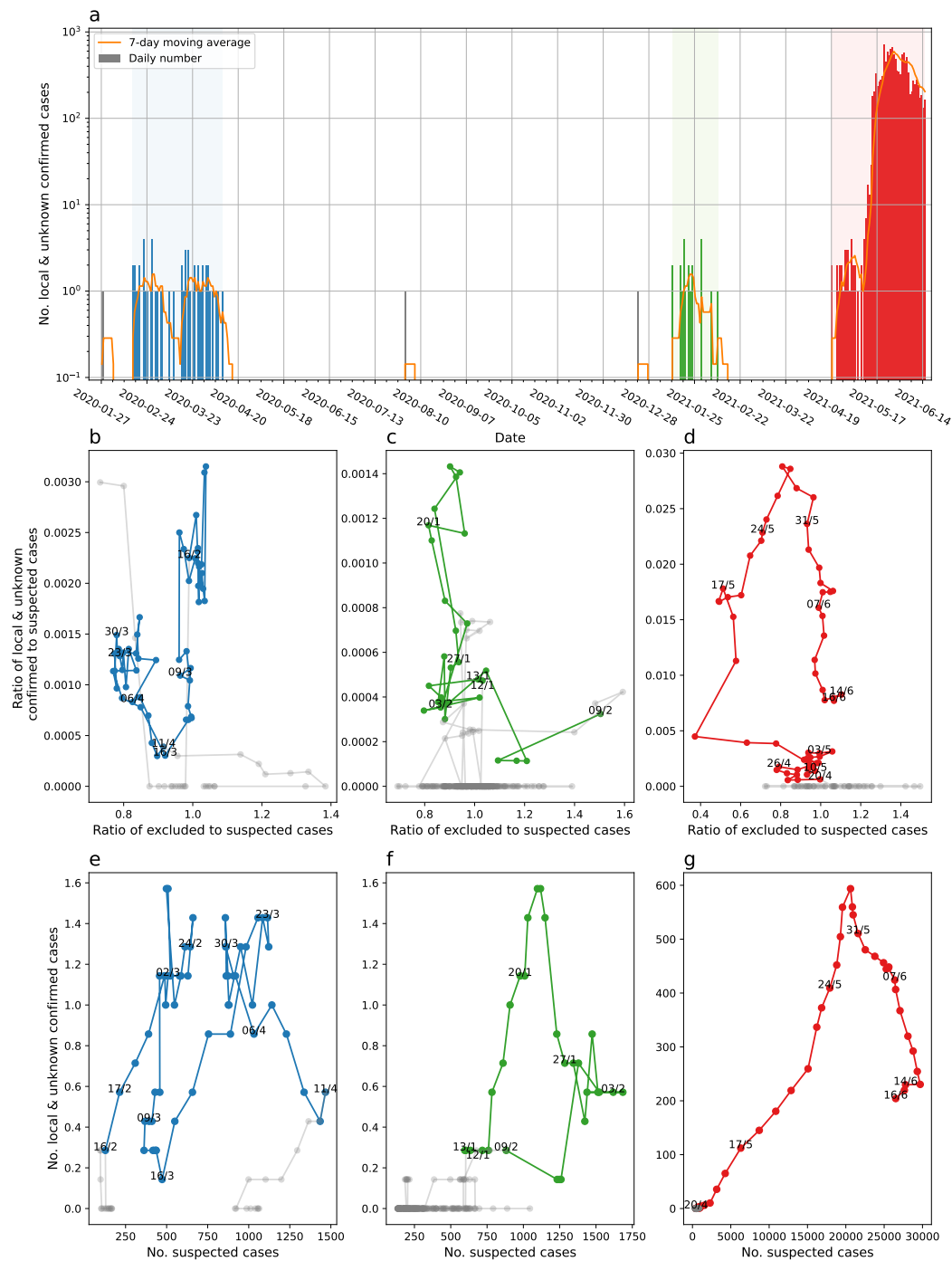


Figure 1: Reported number of local and unknown infected and 7-day moving average in Taiwan from the first local case 2020-01-28 until 2021-06-16 (a). The three community outbreaks are marked in blue (1st), green (2nd), and red (3rd). The cases between are not connected. The ratio of local and unknown confirmed to suspected cases versus ratio of excluded to suspected cases reported for the three outbreaks (b-d). Number of local and unknown confirmed cases versus number of suspected cases reported for the three outbreaks (e-g). The 7-day moving average of each quantity is used in b-g.

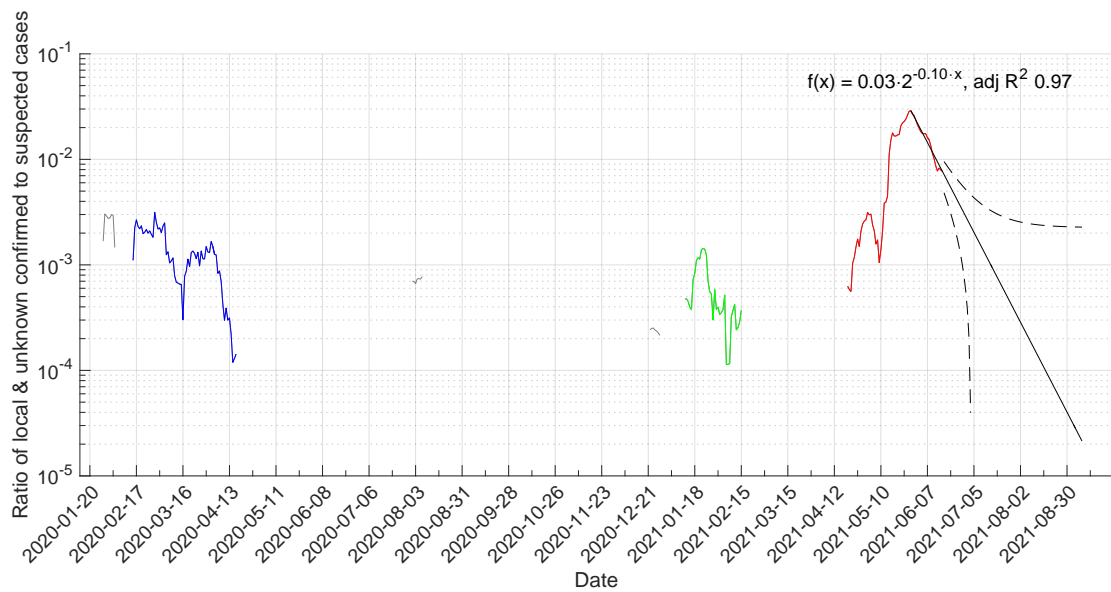


Figure 2: Evolution of the ratio of the 7-day moving mean of local & unknown confirmed to the 7-day moving mean of suspected cases and our forecast of the end of the third outbreak. The three community outbreaks are marked in blue (1st), green (2nd), and red (3rd). The cases between in grey are not connected.

Appendix

Here we provide details on the data collection, cleaning, and analysis to enable verification and reproduction of the results.

Data collection

All data is publicly available and was collected from the Taiwan Centers for Disease Control (Taiwan CDC). We collected the cumulative number of confirmed infected with SARS-CoV-2 with a known local source and unknown source, as well as the cumulative reported suspected and excluded cases, from the Taiwan CDC News Bulletins, available in Chinese at <https://www.cdc.gov.tw/Bulletin/List/MmgtpeidAR50oai4-fgHzQ> (last visited 2021-06-17). Unfortunately, these news bulletins have not been issued every day, nor at the same time of the day throughout the pandemic, which means that the daily increase derived by subtracting the value in the previous report is influenced by the varying time between these reports. The way of counting the number of suspected and excluded was changed on 2020-03-06, which contains a large correction to these cumulative numbers. We therefore also downloaded the "Daily Number of Cases Suspected SARS-CoV-2 Infection Tested" dataset from the Taiwan CDC Open Data portal <https://data.cdc.gov.tw/en/dataset/daily-cases-suspected-sars-cov-2-infection-tested> (last visited 2021-06-17). This dataset contains the daily number of cases suspected to have SARS-CoV-2 from three sources: (i) notifications of infectious diseases, (ii) home quarantine and inspection, and (iii) expanded monitoring, as well as the total daily number.

Data cleaning and preprocessing

We first removed the first CDC News Bulletin for the days when more than one was issued, thus keeping the later report with the larger cumulative numbers. Then we corrected for the number of days in between the report for all cases with more than one day in between by evenly distributing the change in cumulative number over the days in between and ensuring that the cumulative sum equals the reported one. Due to the change in the way of counting the number of suspected and excluded on 2020-03-06, the number of suspected cases is unreasonably low before it and a jump correcting for the change occurs on that day. These artefacts are clearly seen in Figure 3 as a dip in the number of suspected before and a value slightly above 10 000 on this day. These artefacts clearly influence the 7-day moving mean of the number of suspected that we need for getting a stable estimate of the ratio of confirmed infected to suspected cases. The total daily number of suspected cases in the CDC Open Data portals dataset does not contain this error, so we decided to use it instead.

Since the number of excluded cases only was available from in the CDC News Bulletins and contain a similar change in the way of counting on 2020-03-06, we assumed that the ratio of excluded to suspected was correct and used the ratio to estimate the number of daily excluded based on the total number of daily suspected from the CDC Open Data dataset. To ensure that the cumulative sum of daily excluded matched the reported values in the News Bulletins after March 6th, we proportionally to the daily suspected added or removed excluded cases from the days between two reports iteratively from the later report day to the former to avoid errors from rounding to whole integers later. This resulted in an estimate of the daily total number of excluded cases that on each day with a CDC News Bulletin report match the reported number exactly. The result of our preprocessing is visualised in Figure 3, where the number of suspected cases from the corrected News Bulletin and Open Data closely match after 2020-03-06. Note that a red circle without a dot in it indicates that more than one day had passed between the

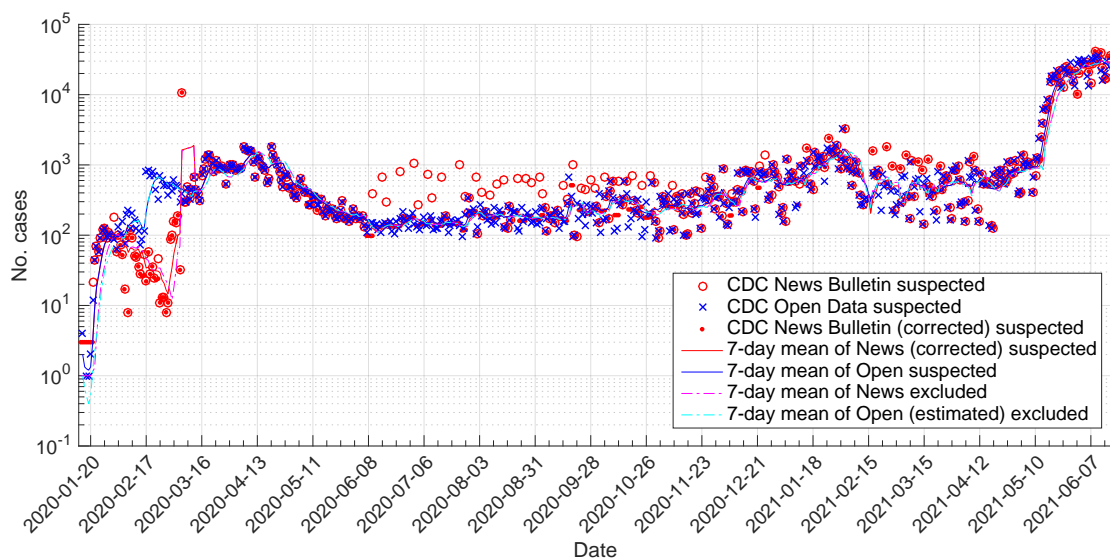


Figure 3: Comparison of the change in number of suspected between CDC News Bulletins (red circles), the total daily number of suspected in the CDC Open Data (blue x), and the change in number of suspected between CDC News Bulletins corrected for the number of days in between (red dot), and the 7-day moving mean of the later two (blue and red lines), and the 7-day moving mean of the change in number of excluded between CDC News Bulletins corrected for the number of days in between (magenta line), and the 7-day moving mean of our estimate of the daily number of excluded based on the total daily number of suspected in the CDC Open Data (cyan line).

consecutive News Bulletins and the change is therefore larger than expected from one day to the next. We have verified that the cumulative number of excluded always remain smaller than the cumulative number of suspected.

Since our analysis is dependent on the 7-day moving mean of suspected and excluded we also evaluated the relative difference in the 7-day moving mean daily values obtained from the CDC News Bulletin and Open Data, relative to the later. The relative difference in number of suspected remains below 41% every day after 2020-03-06, below 10% 81% of the days, and below 1% 33% of the days. The large relative differences occur on separated days with small relative differences in between and are caused by differences in on which day extreme numbers of suspected are reported, see Figure 3. This is to be expected, since the Open Data most probably contains all suspected cases on each day, while the News Bulletins contain the cases added since the last bulletin. Thus these differences may shift values by one day, but no more. We cannot tell which of these two data sources that is more reliable, but considering that the Open Data at least is corrected for the change in the way of calculating the number of suspected we decided to use it and our estimate of the total daily number of excluded based on it. This does not affect the ratio of excluded suspected cases, but it affects the ratio of local & unknown confirmed to suspected cases by up to 41% on individual days, which in practise means that specific values may be shifted in time by one day. Since our forecast of when the third outbreak will end is based on 19 time points any effects of this difference is well within the estimated confidence intervals.

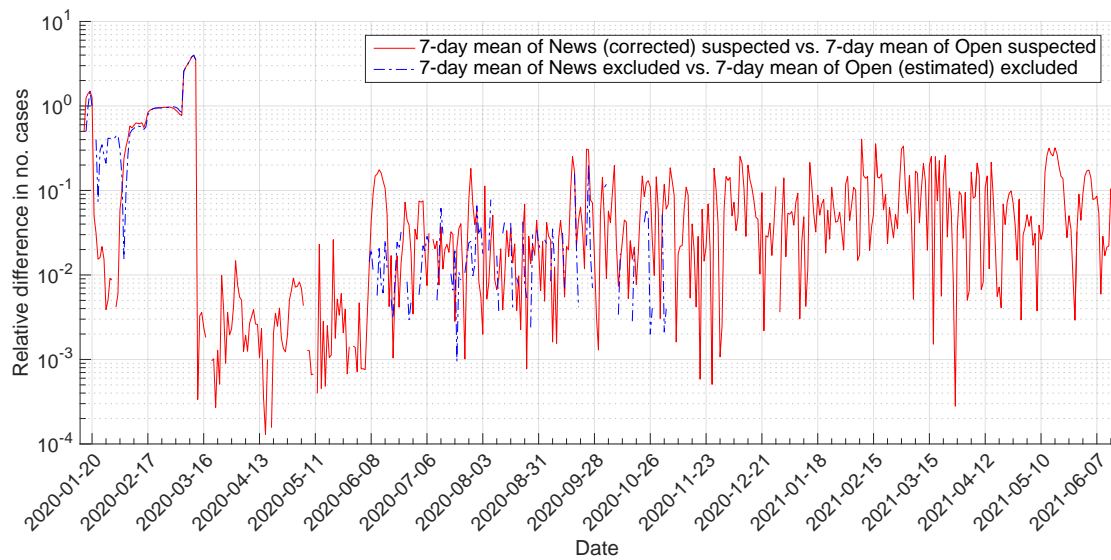


Figure 4: Relative difference in the 7-day moving mean of the change in number of suspected between CDC News Bulletins corrected for the number of days in between and the 7-day moving mean of the total daily number of suspected in the CDC Open Data (red line), and the 7-day moving mean of the change in number of excluded between CDC News Bulletins corrected for the number of days in between and the 7-day moving mean of our estimate of the daily number of excluded based on the total daily number of suspected in the CDC Open Data (magenta line).

Data used

The data we used after cleaning and preprocessing is included in Table 1-4.

Table 1: The data used in this study.

Date	Susp.	Excl.	Conf.	Date	Susp.	Excl.	Conf.	Date	Susp.	Excl.	Conf.
2020-01-15	0	0	0	2020-03-03	506	466	0	2020-04-20	1835	931	0
2020-01-16	4	2	0	2020-03-04	485	454	1	2020-04-21	1371	1526	0
2020-01-17	0	0	0	2020-03-05	297	283	1	2020-04-22	1154	1469	0
2020-01-18	1	0	0	2020-03-06	381	393	0	2020-04-23	1014	1163	0
2020-01-19	1	0	0	2020-03-07	307	382	0	2020-04-24	827	1132	0
2020-01-20	2	1	0	2020-03-08	298	313	0	2020-04-25	619	1091	0
2020-01-21	12	5	0	2020-03-09	476	359	1	2020-04-26	495	738	0
2020-01-22	44	7	0	2020-03-10	332	376	0	2020-04-27	740	588	0
2020-01-23	70	14	0	2020-03-11	445	395	0	2020-04-28	694	792	0
2020-01-24	57	20	0	2020-03-12	677	685	1	2020-04-29	484	705	0
2020-01-25	91	42	0	2020-03-13	439	454	0	2020-04-30	495	513	0
2020-01-26	117	58	0	2020-03-14	379	405	0	2020-05-01	374	477	0
2020-01-27	123	64	0	2020-03-15	306	341	0	2020-05-02	380	436	0
2020-01-28	95	62	1	2020-03-16	730	388	0	2020-05-03	342	365	0
2020-01-29	106	74	1	2020-03-17	873	600	2	2020-05-04	528	442	0
2020-01-30	100	74	0	2020-03-18	1197	786	1	2020-05-05	632	660	0
2020-01-31	93	82	0	2020-03-19	1363	1095	3	2020-05-06	451	507	0
2020-02-01	87	76	0	2020-03-20	1371	1236	0	2020-05-07	417	457	0
2020-02-02	64	57	0	2020-03-21	1047	880	3	2020-05-08	402	408	0
2020-02-03	131	116	0	2020-03-22	811	823	1	2020-05-09	269	386	0
2020-02-04	103	91	0	2020-03-23	1139	734	0	2020-05-10	267	293	0
2020-02-05	157	147	0	2020-03-24	924	697	1	2020-05-11	362	307	0
2020-02-06	77	73	0	2020-03-25	938	603	2	2020-05-12	349	343	0
2020-02-07	199	191	0	2020-03-26	929	802	0	2020-05-13	277	317	0
2020-02-08	225	221	0	2020-03-27	864	881	2	2020-05-14	274	285	0
2020-02-09	128	121	0	2020-03-28	527	592	1	2020-05-15	323	306	0
2020-02-10	205	195	0	2020-03-29	835	456	1	2020-05-16	220	283	0
2020-02-11	168	162	0	2020-03-30	1023	679	2	2020-05-17	185	214	0
2020-02-12	128	127	0	2020-03-31	924	708	0	2020-05-18	269	235	0
2020-02-13	115	117	0	2020-04-01	1009	990	2	2020-05-19	223	236	0
2020-02-14	72	73	0	2020-04-02	822	775	2	2020-05-20	226	253	0
2020-02-15	89	91	1	2020-04-03	880	854	1	2020-05-21	236	247	0
2020-02-16	112	115	1	2020-04-04	864	894	0	2020-05-22	187	221	0
2020-02-17	813	827	2	2020-04-05	912	850	1	2020-05-23	170	200	0
2020-02-18	832	841	1	2020-04-06	1814	894	0	2020-05-24	183	183	0
2020-02-19	696	706	1	2020-04-07	1685	1507	1	2020-05-25	222	198	0
2020-02-20	796	808	2	2020-04-08	1628	1725	1	2020-05-26	299	204	0
2020-02-21	714	728	0	2020-04-09	1576	1526	0	2020-05-27	183	286	0
2020-02-22	444	459	2	2020-04-10	1564	1613	0	2020-05-28	170	174	0
2020-02-23	328	340	2	2020-04-11	1091	1288	1	2020-05-29	156	169	0
2020-02-24	698	725	1	2020-04-12	664	1026	0	2020-05-30	174	168	0
2020-02-25	609	632	1	2020-04-13	1340	2183	0	2020-05-31	237	160	0
2020-02-26	521	541	0	2020-04-14	1204	1439	0	2020-06-01	186	197	0
2020-02-27	520	541	1	2020-04-15	952	1078	0	2020-06-02	178	245	0
2020-02-28	371	386	4	2020-04-16	903	1273	0	2020-06-03	188	185	0
2020-02-29	511	513	0	2020-04-17	838	1046	0	2020-06-04	170	175	0
2020-03-01	430	415	1	2020-04-18	557	893	0	2020-06-05	184	201	0
2020-03-02	600	559	1	2020-04-19	624	600	0	2020-06-06	138	177	0

Table 2: The data used in this study (continued).

Date	Susp.	Excl.	Conf.	Date	Susp.	Excl.	Conf.	Date	Susp.	Excl.	Conf.
2020-06-07	108	71	0	2020-07-25	95	85	0	2020-09-11	186	205	0
2020-06-08	129	84	0	2020-07-26	123	112	0	2020-09-12	126	123	0
2020-06-09	152	101	0	2020-07-27	201	182	0	2020-09-13	210	205	0
2020-06-10	152	101	0	2020-07-28	341	143	0	2020-09-14	154	152	0
2020-06-11	135	141	0	2020-07-29	220	320	0	2020-09-15	160	137	0
2020-06-12	142	148	0	2020-07-30	203	232	0	2020-09-16	282	244	0
2020-06-13	118	125	0	2020-07-31	235	271	0	2020-09-17	680	177	0
2020-06-14	111	117	0	2020-08-01	104	120	1	2020-09-18	351	793	0
2020-06-15	145	152	0	2020-08-02	132	196	0	2020-09-19	95	216	0
2020-06-16	147	134	0	2020-08-03	273	178	0	2020-09-20	98	204	0
2020-06-17	146	134	0	2020-08-04	192	126	0	2020-09-21	283	89	0
2020-06-18	135	164	0	2020-08-05	212	215	0	2020-09-22	175	174	0
2020-06-19	159	152	0	2020-08-06	214	182	0	2020-09-23	257	256	0
2020-06-20	114	109	0	2020-08-07	164	200	0	2020-09-24	198	293	0
2020-06-21	104	99	0	2020-08-08	173	212	0	2020-09-25	137	203	0
2020-06-22	156	149	0	2020-08-09	142	194	0	2020-09-26	275	235	0
2020-06-23	126	121	0	2020-08-10	247	230	0	2020-09-27	204	175	0
2020-06-24	173	166	0	2020-08-11	147	137	0	2020-09-28	259	222	0
2020-06-25	217	129	0	2020-08-12	190	178	0	2020-09-29	211	176	0
2020-06-26	176	188	0	2020-08-13	229	235	0	2020-09-30	260	218	0
2020-06-27	154	164	0	2020-08-14	198	204	0	2020-10-01	152	176	0
2020-06-28	127	135	0	2020-08-15	133	137	0	2020-10-02	392	187	0
2020-06-29	184	198	0	2020-08-16	124	180	0	2020-10-03	109	121	0
2020-06-30	210	225	0	2020-08-17	260	116	0	2020-10-04	167	187	0
2020-07-01	141	151	0	2020-08-18	165	216	0	2020-10-05	356	398	0
2020-07-02	129	143	0	2020-08-19	222	204	0	2020-10-06	170	174	0
2020-07-03	140	157	0	2020-08-20	214	236	0	2020-10-07	432	242	0
2020-07-04	119	118	0	2020-08-21	217	239	0	2020-10-08	590	457	0
2020-07-05	151	149	0	2020-08-22	128	142	0	2020-10-09	339	420	0
2020-07-06	177	175	0	2020-08-23	117	111	0	2020-10-10	114	184	0
2020-07-07	136	135	0	2020-08-24	242	230	0	2020-10-11	123	199	0
2020-07-08	141	140	0	2020-08-25	155	147	0	2020-10-12	305	492	0
2020-07-09	188	144	0	2020-08-26	182	173	0	2020-10-13	271	316	0
2020-07-10	165	128	0	2020-08-27	204	210	0	2020-10-14	345	267	0
2020-07-11	118	126	0	2020-08-28	177	183	0	2020-10-15	589	282	0
2020-07-12	126	133	0	2020-08-29	148	153	0	2020-10-16	382	365	0
2020-07-13	126	134	0	2020-08-30	157	166	0	2020-10-17	132	195	0
2020-07-14	155	166	0	2020-08-31	215	229	0	2020-10-18	176	262	0
2020-07-15	164	175	0	2020-09-01	144	153	0	2020-10-19	314	467	0
2020-07-16	191	152	0	2020-09-02	152	162	0	2020-10-20	223	209	0
2020-07-17	145	196	0	2020-09-03	232	181	0	2020-10-21	215	180	0
2020-07-18	111	107	0	2020-09-04	242	189	0	2020-10-22	329	214	0
2020-07-19	135	129	0	2020-09-05	112	186	0	2020-10-23	177	353	0
2020-07-20	161	155	0	2020-09-06	173	204	0	2020-10-24	97	195	0
2020-07-21	143	137	0	2020-09-07	188	91	0	2020-10-25	118	103	0
2020-07-22	156	151	0	2020-09-08	187	221	0	2020-10-26	293	256	0
2020-07-23	163	158	0	2020-09-09	155	185	0	2020-10-27	206	181	0
2020-07-24	135	130	0	2020-09-10	224	146	0	2020-10-28	198	174	0

Table 3: The data used in this study (continued).

Date	Susp.	Excl.	Conf.	Date	Susp.	Excl.	Conf.	Date	Susp.	Excl.	Conf.
2020-10-29	569	192	0	2020-12-16	757	844	0	2021-02-02	3243	1000	0
2020-10-30	156	244	0	2020-12-17	790	715	0	2021-02-03	1167	2029	0
2020-10-31	93	208	0	2020-12-18	577	573	0	2021-02-04	927	1082	0
2020-11-01	116	191	0	2020-12-19	240	502	0	2021-02-05	877	2127	1
2020-11-02	352	237	0	2020-12-20	183	559	0	2021-02-06	517	1918	0
2020-11-03	288	262	0	2020-12-21	760	432	0	2021-02-07	793	825	0
2020-11-04	325	259	0	2020-12-22	800	455	1	2021-02-08	1107	457	0
2020-11-05	272	262	0	2020-12-23	670	851	0	2021-02-09	784	844	1
2020-11-06	394	230	0	2020-12-24	728	560	0	2021-02-10	379	729	0
2020-11-07	114	209	0	2020-12-25	759	586	0	2021-02-11	275	639	0
2020-11-08	118	217	0	2020-12-26	324	678	0	2021-02-12	276	369	0
2020-11-09	320	180	0	2020-12-27	365	624	0	2021-02-13	324	0	0
2020-11-10	292	262	0	2020-12-28	1017	356	0	2021-02-14	334	0	0
2020-11-11	287	388	0	2020-12-29	810	770	0	2021-02-15	325	0	0
2020-11-12	380	363	0	2020-12-30	674	778	0	2021-02-16	320	0	0
2020-11-13	204	296	0	2020-12-31	507	745	0	2021-02-17	759	2001	0
2020-11-14	98	201	0	2021-01-01	200	621	0	2021-02-18	698	632	0
2020-11-15	102	149	0	2021-01-02	251	402	0	2021-02-19	839	821	0
2020-11-16	382	182	0	2021-01-03	159	302	0	2021-02-20	371	839	0
2020-11-17	215	238	0	2021-01-04	1185	180	0	2021-02-21	231	0	0
2020-11-18	287	286	0	2021-01-05	597	654	0	2021-02-22	736	0	0
2020-11-19	429	277	0	2021-01-06	807	987	0	2021-02-23	487	0	0
2020-11-20	199	265	0	2021-01-07	699	603	0	2021-02-24	546	2445	0
2020-11-21	210	325	0	2021-01-08	597	728	0	2021-02-25	544	525	0
2020-11-22	126	195	0	2021-01-09	249	539	0	2021-02-26	418	0	0
2020-11-23	341	200	0	2021-01-10	276	176	0	2021-02-27	221	669	0
2020-11-24	342	240	0	2021-01-11	985	628	0	2021-02-28	197	307	0
2020-11-25	329	232	0	2021-01-12	612	697	2	2021-03-01	276	0	0
2020-11-26	425	320	0	2021-01-13	758	862	0	2021-03-02	434	0	0
2020-11-27	638	392	0	2021-01-14	967	0	0	2021-03-03	288	789	0
2020-11-28	479	359	0	2021-01-15	1174	1446	0	2021-03-04	675	278	0
2020-11-29	241	693	0	2021-01-16	543	836	0	2021-03-05	706	0	0
2020-11-30	337	377	0	2021-01-17	447	854	2	2021-03-06	349	1225	0
2020-12-01	363	280	0	2021-01-18	1518	610	1	2021-03-07	176	771	0
2020-12-02	184	262	0	2021-01-19	951	657	4	2021-03-08	1093	233	0
2020-12-03	898	301	0	2021-01-20	1244	1178	1	2021-03-09	357	551	0
2020-12-04	283	280	0	2021-01-21	1188	1202	0	2021-03-10	490	880	0
2020-12-05	146	605	0	2021-01-22	1324	1341	2	2021-03-11	626	0	0
2020-12-06	137	352	0	2021-01-23	1007	1081	1	2021-03-12	641	799	0
2020-12-07	242	141	0	2021-01-24	593	1293	2	2021-03-13	212	0	0
2020-12-08	291	170	0	2021-01-25	1738	0	0	2021-03-14	142	1034	0
2020-12-09	300	211	0	2021-01-26	1516	1867	0	2021-03-15	536	152	0
2020-12-10	434	78	0	2021-01-27	1629	1639	0	2021-03-16	650	0	0
2020-12-11	780	330	0	2021-01-28	1602	1290	0	2021-03-17	485	865	0
2020-12-12	423	540	0	2021-01-29	1878	1609	0	2021-03-18	360	479	0
2020-12-13	216	1065	0	2021-01-30	1359	1362	4	2021-03-19	432	713	0
2020-12-14	847	270	0	2021-01-31	872	1277	0	2021-03-20	219	424	0
2020-12-15	801	594	0	2021-02-01	1210	1220	0	2021-03-21	163	391	0

Table 4: The data used in this study (continued).

Date	Susp.	Excl.	Conf.	Date	Susp.	Excl.	Conf.	Date	Susp.	Excl.	Conf.
2021-03-22	803	0	0	2021-04-20	526	413	2	2021-05-19	17528	8746	265
2021-03-23	437	771	0	2021-04-21	837	577	0	2021-05-20	17892	12403	283
2021-03-24	569	706	0	2021-04-22	670	520	0	2021-05-21	21653	15358	311
2021-03-25	716	556	0	2021-04-23	832	920	2	2021-05-22	14450	17597	721
2021-03-26	628	763	0	2021-04-24	543	656	1	2021-05-23	12865	14176	457
2021-03-27	252	637	0	2021-04-25	614	479	2	2021-05-24	22926	12381	590
2021-03-28	164	405	0	2021-04-26	1099	488	2	2021-05-25	24383	15368	537
2021-03-29	850	212	0	2021-04-27	752	1089	1	2021-05-26	20871	18701	633
2021-03-30	834	604	0	2021-04-28	764	1018	3	2021-05-27	19811	22596	666
2021-03-31	964	807	0	2021-04-29	1144	685	3	2021-05-28	28993	15799	552
2021-04-01	604	623	0	2021-04-30	854	1056	3	2021-05-29	16141	29381	484
2021-04-02	275	693	0	2021-05-01	383	766	1	2021-05-30	13535	27136	354
2021-04-03	290	412	0	2021-05-02	418	625	4	2021-05-31	27502	11967	347
2021-04-04	158	362	0	2021-05-03	1393	435	2	2021-06-01	30905	22678	326
2021-04-05	303	171	0	2021-05-04	988	993	2	2021-06-02	29598	35689	548
2021-04-06	1159	421	0	2021-05-05	1094	1194	0	2021-06-03	27796	31670	583
2021-04-07	658	478	0	2021-05-06	1006	1001	1	2021-06-04	31416	29217	470
2021-04-08	669	0	0	2021-05-07	1067	939	0	2021-06-05	18505	29470	510
2021-04-09	846	1716	0	2021-05-08	413	926	2	2021-06-06	13167	20020	342
2021-04-10	230	658	0	2021-05-09	680	698	0	2021-06-07	33272	14079	190
2021-04-11	159	553	0	2021-05-10	1237	556	4	2021-06-08	31728	26995	203
2021-04-12	755	344	0	2021-05-11	1218	1003	7	2021-06-09	33580	41180	273
2021-04-13	538	638	0	2021-05-12	2432	1136	17	2021-06-10	35025	29801	251
2021-04-14	598	721	0	2021-05-13	3893	1647	13	2021-06-11	36148	34517	277
2021-04-15	526	570	0	2021-05-14	6177	0	29	2021-06-12	22323	40622	245
2021-04-16	548	507	0	2021-05-15	6497	7736	180	2021-06-13	15821	24841	174
2021-04-17	139	511	0	2021-05-16	8425	4755	206	2021-06-14	19907	16906	185
2021-04-18	128	319	0	2021-05-17	15447	6322	333	2021-06-15	30647	17792	132
2021-04-19	719	133	0	2021-05-18	18087	8306	238	2021-06-16	25689	33366	165