

1 **Title**

2 The serological diversity of serum IgG/IgA/IgM against the SARS-CoV-2 nucleoprotein, spike, and
3 receptor-binding domain and neutralizing antibodies in patients with COVID-19 in Japan

4

5 **Running Title**

6 Diversity of antibody against SARS-CoV-2

7

8 **Authors**

9 Yudai Kaneko^{1,2}, Akira Sugiyama^{1,3}, Toshiya Tanaka¹, Kazushige Fukui³, Akashi Taguchi¹, Aya Nakayama³,
10 Kazumasa Koga⁴, Yoshiro Kishi², Wang Daming⁵, Chungen Qian⁶, Fuzhen Xia⁷, Fan He⁷, Liang Zheng⁷, Yi Yu⁷,
11 Youichiro Wada^{1,3}, Yoshiaki Wada⁴, Tatsuhiko Kodama¹, Takeshi Kawamura^{1,3*}

12

13 **Affiliations**

14 ¹ Laboratory for Systems Biology and Medicine, Research Centre for Advanced Science and Technology (RCAST),
15 The University of Tokyo, Tokyo, Japan.

16 ² Medical & Biological Laboratories Co., Ltd, Tokyo, Japan

17 ³ Isotope Science Centre, The University of Tokyo, Tokyo, Japan.

18 ⁴ Department of Neurology, Nissan Tamagawa Hospital, Tokyo, Japan.

19 ⁵ Suzhou Institute of Biomedical Engineering and Technology Chinese Academy of Sciences, Suzhou, China

20 ⁶ The Key Laboratory for Biomedical Photonics of MOE at Wuhan National Laboratory for Optoelectronics –
21 Hubei Bioinformatics & Molecular Imaging Key Laboratory, Systems Biology Theme, Department of Biomedical
22 Engineering, College of Life Science and Technology, Huazhong University of Science and Technology, Hubei,
23 China.

24 ⁷ Reagent R&D Centre, Shenzhen YHLO Biotech Co., Ltd, Guangdong, China.

25

26 * **Corresponding author**

27 Takeshi Kawamura, Isotope Science Centre, The University of Tokyo, 2-11-16 Yayoi, Bunkyo, Tokyo 113-0032,
28 Japan.

29 E-mail: kawamura@lsbm.org

30

31 **Word count**

32 Abstract: 239

33 Main text: 2487

34

35 **Abstract**

36 Objectives:

37 To compare the temporal changes of IgM, IgG, and IgA antibodies against the SARS-CoV-2 nucleoprotein, S1
38 subunit, and receptor binding domain and neutralizing antibodies (NAbs) against SARS-CoV-2 in patients with
39 COVID-19.

40 Methods:

41 A total of five patients in Nissan Tamagawa Hospital, Tokyo, Japan confirmed COVID-19 from August 8, 2020 to
42 August 14, 2020 were investigated. Serum samples were acquired multiple times from 0 to 76 days after symptom
43 onset. Using a fully automated CLIA analyzer, we measured the levels of IgG, IgA, and IgM against the
44 SARS-CoV-2 N, S1, and RBD and NAbs against SARS-CoV-2.

45 Results:

46 The levels of IgG antibodies against SARS-CoV-2 structural proteins increased over time in all cases but IgM and
47 IgA levels against SARS-CoV-2 showed different increasing trends among individuals in the early stage. In
48 particular, we observed IgA antibodies increasing before IgG and IgM in 3/5 cases. The NAb levels against
49 SARS-CoV-2 increased and kept above 10 AU/mL more than around 70 days after symptom onset in all cases.
50 Furthermore, in the early stage, NAb levels were more than cut off value in 4/5 COVID-19 patients some of whose
51 antibodies against RBD didn't exceed 10 AU/mL.

52 Conclusions:

53 Our findings indicate that patients with COVID-19 should be examined for IgG, IgA and IgM antibodies against

54 SARS-CoV-2 structural proteins and NAbs against SARS-CoV-2 in addition to conventional antibody testing

55 methods for SARS-CoV-2 (IgG and IgM kits) to analyze the diversity of patients' immune mechanisms.

56 **Key Words:** SARS-CoV-2; COVID-19; antibody; neutralizing antibody; patient

57

58 **Introduction**

59 COVID-19 caused by the novel coronavirus severe acute respiratory syndrome coronavirus 2 (SARS-CoV-2) has
60 caused a worldwide pandemic [1]. SARS-CoV-2 is a positive-sense single-stranded RNA virus of the
61 Coronaviridae family that is composed of an envelope (E), membrane (M), nucleoprotein (N), and spike (S) [2].
62 Coronaviruses entry and infect cells by binding the receptor binding domain (RBD) in the S1 subunit of their
63 trimeric spike proteins to angiotensin-converting enzyme 2 (ACE2) on cell surfaces [3] so a number of neutralizing
64 antibodies (NAbs) against SARS-CoV-2 were reported to target the RBD and block the binding between RBD and
65 ACE2 [4, 5]. As understanding the humoral immunity is important for developing drugs and vaccines for
66 COVID-19, measuring the levels of antibodies against SARS-CoV-2 structural proteins and NAbs against
67 SARS-CoV-2 over time will help identify key factors involved in the immune response. Measurements and
68 monitoring of antibodies (mainly IgG and IgM) against SARS-CoV-2 have already been performed, and some
69 study reported that antibodies are useful diagnostic tools for SARS-CoV-2 infections [6, 7]. However, the
70 longitudinal measurements of antibody isotypes against the SARS-CoV-2 structural proteins and NAbs against
71 SARS-CoV-2 in individuals have not been performed. Therefore, in the present study, we measured chronological
72 changes in the IgG, IgA, and IgM antibodies against the SARS-CoV-2 N, S1, and RBD and NAbs against
73 SARS-CoV-2.

74

75 **Methods**

76 Reagents and instruments

77 2019-nCoV IgM and IgG chemiluminescence immunoassay (CLIA) kits, detecting SARS-CoV-2 recombinant
78 antigen, were purchased from Shenzhen YHLO Biotech Co., Ltd (Shenzhen, China). Covid-2019 IgG Kit against N
79 antigen (recombinant N protein), Covid-2019 IgM Kit against N antigen (recombinant N protein), Covid-2019 IgA
80 Kit against N antigen (recombinant N protein), Covid-2019 IgG Kit against S1 antigen (recombinant S1 protein),
81 Covid-2019 IgM Kit against S1 antigen (recombinant S1 protein), Covid-2019 IgA Kit against S1 antigen
82 (recombinant S1 protein), Covid-2019 IgG Kit against RBD antigen (recombinant RBD protein), Covid-2019 IgM
83 Kit against RBD antigen (recombinant RBD protein), Covid-2019 IgA Kit against RBD antigen (recombinant RBD
84 protein) and iFlash-2019- nCoV NAb, a one-step competitive immunoassay, were obtained from Shenzhen YHLO
85 Biotech Co., Ltd (Shenzhen, China). A fully automatic CLIA analyzer (iFlash3000) was purchased from Shenzhen
86 YHLO Biotech Co., Ltd. We summarized all kits for immunoassays on Table 1.

87

88 Patients

89 A total of five patients confirmed COVID-19 in Nissan Tamagawa Hospital from August 8, 2020 to August 14,
90 2020 were enrolled in this study. At least seven serum samples for each patient were collected from 0 to 76 days
91 after symptom onset. This study was performed at the University of Tokyo and Nissan Tamagawa Hospital
92 approved by their ethics committee (protocol number R2-05 and Tama2020-003).

93

94 Serological test

95 Levels of IgG, IgA, and IgM against SARS-CoV-2 N, S1, and RBD and neutralizing antibody (NAb) against

96 SARS-CoV-2 were measured using a fully automatic CLIA analyzer (iFlash3000). The antibody concentrations
97 (AU/mL) were calculated based on the relative light units (RLU) obtained by the CLIA analyzer. The cut-off value
98 for indicating a positive test result as used by the manufacturer for all kits was 10 AU/mL.

99

100 **Results**

101 The subjects of this study were five men in their 20s to 50s with COVID-19. All infections were confirmed at
102 Nissan Tamagawa Hospital. Table 2 shows the symptoms exhibited by these patients. The most common symptom
103 was fever, with other symptoms including sore throat, cough, dysgeusia, and headache. Patient 2 and Patient 4
104 exhibited pneumonia. We didn't find correlation between symptom severity and Real Time PCR Ct values of
105 SARS-CoV-2.

106 IgG and IgM levels against SARS-CoV-2 were measured using a fully automatic CLIA analyzer (iFlash3000)
107 (Fig. 1). The IgM seroconversion time was slower than IgG. IgG levels against SARS-CoV-2 increased after
108 symptom onset, exceeding 10 AU/mL as early as 7 days (Fig. 1D) and as late as 17 days after symptom onset (Fig.
109 1E). In patients with pneumonia, it took a mean of 7 days for IgG antibody levels against SARS-CoV-2 to exceed
110 10 AU/mL (Fig. 1B, D) while in other patients it took a mean of 16 days (Fig. 1A, C, E). In addition, IgG levels in
111 patients with pneumonia tended to increase over a long period while IgG levels in those with mild symptoms
112 exhibited a decreasing trend starting from day 18. IgM antibody levels against SARS-CoV-2 in only two patients
113 with pneumonia exceeded 10 AU/mL (Fig. 1B, D) while IgM levels against SARS-CoV-2 in other patients were
114 lower than the cut-off value.

115 To evaluate antibodies against SARS-CoV-2 in greater detail, we measured levels of IgG, IgA, and IgM against
116 the N, S1, and RBD and NAbs against SARS-CoV-2 using a fully automatic CLIA analyzer (iFlash 3000) (Fig. 2).
117 IgG against N and S1 increased in the early stage, exceeding 10 AU/mL as early as day 7 (Fig. 2B) and as late as
118 day 17 (Fig. 2E) after symptom onset. In addition, it took 7 to 9 days for IgG against N and S1 to exceed 10 AU/mL
119 in patients with pneumonia (Fig. 2B, D) but it took 15 to 17 days in patients with mild symptoms (Fig. 2A, C, E).
120 In contrast, levels of IgM and IgA against N and S1 exhibited different increasing trends among patients in the
121 early stage. For example, in Patient 5, IgM and IgG levels were low but IgA levels were high on day 11.
122 Furthermore, in Patient 3 and Patient 5 who only exhibited one symptom, levels of IgA against N were already
123 slightly elevated on day 1 after symptom onset. In later stage, IgG levels remained flat followed by rise in all
124 samples while the levels of IgA fell gradually and below the cut-off value around day 70 in 4/5 patients. The
125 changes in levels of IgG, IgA, and IgM against RBD were similar to those of IgG, IgA, and IgM against S1 from
126 day 20 after COVID-19 symptom onset although the increasing trends of antibody levels against S1 weren't
127 different from those of the antibody levels against RBD in early stage.

128 NAbs against SARS-CoV-2 tended to increase, exceeding 10 AU/mL less than 15 days after symptom onset (Fig.
129 2). The peak levels of NAbs against SARS-CoV-2 in patients with pneumonia were much higher than NAbs levels
130 in those with mild symptoms. NAb levels stayed above 10 AU/mL more than around 70 days after symptom onset
131 while the levels of IgA and IgM against RBD dropped below 10 AU/mL around 70 days after symptom onset in 3/5
132 patients (Patient 2, Patient 3, and Patient 5). Furthermore, in the early stage, one or no antibody isotype against
133 RBD exceeded 10 AU/mL in 4/5 COVID-19 patients whose NAb levels were more than 10 AU/mL. For example,

134 in Patient 2 and Patient 4, only IgM levels against RBD were more than the cut-off value when the levels of NAbs
135 exceeded 10 AU/mL on day 7 and 8 after symptom onset, respectively. In Patient 3, the levels of any antibody
136 isotypes against RBD were less than 10AU/ml when NAb levels over the cut-off value from Day 9 to Day 11 after
137 symptom onset.

138 To analyze antibodies against SARS-CoV-2 in COVID-19 patients, we compared levels of IgG, IgA, and IgM
139 against the N, S1, and RBD and NAbs against SARS-CoV-2. We observed the higher correlation between the levels
140 of antibodies detected by using 2019-nCoV IgG and IgM CLIA kits and anti-N antibodies than anti-S and anti-RBD
141 antibodies (anti-N IgG: $R^2=0.8804$, anti-S1 IgG: $R^2=0.7919$, anti-RBD IgG: $R^2=0.8196$, anti-N IgM:
142 $R^2=0.9727$, anti-S1 IgM: $R^2=0.6832$, anti-RBD IgM: $R^2=0.6949$) (Fig3A, B). Furthermore, there are very high
143 correlations between IgG, IgA, and IgM antibodies against S1 and RBD (IgG: $R^2=0.9612$, IgA: $R^2=0.9794$,
144 IgM: $R^2=0.9808$) (Fig. 3C). The NAb levels were correlated most strongly with IgG levels of the antibody
145 isotypes (anti-N IgG: $R^2=0.8447$, anti-S1 IgG: $R^2=0.9127$ and anti-RBD IgG: $R^2=0.9251$, anti-N IgA:
146 $R^2=0.2226$, anti-S1 IgA: $R^2=0.2087$, anti-RBD IgA: $R^2=0.2202$, anti-N IgM: $R^2=0.3115$, anti-S1 IgM:
147 $R^2=0.7947$ and anti-RBD IgM: $R^2=0.7657$) (Fig. 4).

148

149 Discussion

150 In this study, we examined the levels of IgG, IgA, and IgM antibodies against SARS-CoV-2 N, S1, and RBD
151 and NAbs against SARS-CoV-2 in patients' sera with COVID-19 using a fully automated CLIA analyzer. Our
152 results demonstrated the serological diversity of serum IgG, IgA, and IgM antibodies against the SARS-CoV-2 N,

153 S1 and RBD and NAbs against SARS-CoV-2 in patients with COVID-19 and the necessity of combinational
154 measurements of the antibody isotype levels against each structural protein of SARS-CoV-2 and NAb levels.

155 Using 2019-nCoV IgG kits and 2019-nCoV IgM kits, the chronological change of IgG antibody in patients with
156 COVID-19 found in this study is in line with other recent publications. Several reports showed that IgG levels were
157 higher in the later stages after symptom onset in severe cases than those in mild cases and that patients who die
158 from COVID-19 exhibit higher IgM levels [8,9]. Our results show that IgG antibody levels against SARS-CoV-2 in
159 the later stage and IgM antibody levels against SARS-CoV-2 could be useful for diagnosing the severity of the
160 disease. Our results showed that seroconversion time of IgM was slower than that of IgG in COVID-19 patients'
161 sera after symptom onset. A recent study also reported that IgM seroconversion was later than that of IgG in some
162 cases [10], not being consistent with the typical model that IgM seroconversion time is faster than IgG in the early
163 stage after viral infections. These data suggest that individuals who were not confirmed SARS-CoV-2 infection
164 may already have antibodies possessing cross-reactivity with SARS-CoV-2 in some cases, being infected by a
165 member of the coronavirus family.

166 The IgG and IgM levels were correlated strongly with the antibody levels against SARS-CoV-2 N proteins. In
167 particular, we observed the high correlation between the levels of antibodies measured by using 2019-nCoV IgG
168 and IgM CLIA kits and anti-N antibodies at low antibody levels. According to the manufacturer, 2019-nCoV IgG
169 and IgM CLIA kits detect antibodies against the SARS-CoV-2 recombinant antigen. We speculate that magnetic
170 microparticles are mainly coated with N antigens. In order to evaluate not only anti-N antibodies but also anti-S1
171 antibodies accurately, we need use the kit detecting the levels of antibodies against SARS-CoV-2 structural protein

172 as well as conventional testing kit (2019-nCoV IgG/IgM kit).

173 Using Covid-2019 IgG, IgA, and IgM kit against N, S1, and RBD antigen, levels of IgG against SARS-CoV-2
174 increased after symptom onset in all patients with COVID-19 but some cases exhibited different seroconversion
175 times such as IgA levels rising before IgG and IgM. A recent study reported that IgA levels in serum increased soon
176 after symptom onset with mild symptoms while that a case with the severity of symptoms showed a delayed but
177 very strong IgA response against SARS-CoV-2 [11]. Furthermore, measurement of serum IgA, in addition to
178 IgM and IgG, improved diagnostic accuracy for SARS-CoV-2 infections [12]. We also observed higher levels of
179 NAb in patients with severe symptom than NAb levels in patients with mild symptom, using 2019-nCoV NAb kits.
180 The NAb levels were reported to increase after SARS-CoV-2 infection in most individuals [13] and be associated
181 with clinical disease severity [14, 15], confirming the results of our studies. IgA and NAb levels against
182 SARS-CoV-2 could be biomarker for COVID-19 severity.

183 There is the highest correlation between NAb and IgG levels against RBD of antibody isotypes in this study.
184 Furthermore, IgG levels against RBD are maintained in later stage, exhibiting similarly changes of NAb levels,
185 while the ratios of NAb levels to IgA and IgM levels against RBD continuously increased starting on day 18 after
186 COVID-19 symptom onset in all cases. Our data suggested that isotype switching to IgG could take place and
187 serum IgG mainly could have neutralizing activity against SARS-CoV-2 in the later stage, being consistent with a
188 recent study [16].

189 The NAb kit offer us some advantages by evaluating all antibodies having neutralization activity in the
190 COVID-19 patients. First, the NAb kit detects ACE2 competitively binding to RBD-coated particles with

191 antibodies against SARS-CoV-2 structural proteins while typical antibody kit against structural proteins detect each
192 isotype, not reflecting total NAb levels. In fact, we observed the levels of NAb keeping above the cut off value
193 more than around 70 days after symptom onset in all COVID-19 patients some of whose antibody levels against
194 RBD lower than the cut-off value. Furthermore, some of antibody isotypes against RBD fall below 10AU/ml in
195 early stage while NAb levels exceed the cut-off value in 4/5 patients. Second, the levels of IgG, IgA, and IgM
196 against structural proteins weren't detected correctly, biased by different affinities and avidity of antibody isotypes.
197 The NAb kit could be as useful as IgG, IgA, and IgM kit against S1 and RBD for the accurate measurement of
198 antibodies having neutralizing activity in patients' sera with COVID-19.

199 However, there are some limitations in this study. First, the number of patients is the relatively small this study.
200 It is necessary for us to measure antibody levels in many COVID-19 patients' sera for a more accurate statistical
201 significance regarding the correlations between antibody isotypes and the severity of symptoms. Second, we didn't
202 detect neutralizing activity of each isotype against SARS-CoV-2 by the methods considering the bias of different
203 affinities of antibody isotypes as explained above. Furthermore, each antibody isotype affects the total NAb levels
204 at different times after infection because of different seroconversion. We observed IgA levels against S1 and RBD
205 declining followed by rise and below 10AU/mL around day 70 in all cases and a recent study also reported that IgA
206 levels in serum decreased notably 1 month after symptom onset, being more potent than IgG in neutralizing activity
207 for SARS-CoV-2 [17]. We need assess neutralizing activity of IgG, IgA, and IgM against SARS-CoV-2, using the
208 assay which can measure each isotype for understanding the role of these isotype against SARS-CoV-2. Third, we
209 detected NAb against only RBD of SARS-CoV-2 in serum samples. Antibodies against S1 region except for RBD

210 of SARS-CoV-2 were reported to have neutralizing activity [18, 19]. We should detect NAb by using S1-coated
211 particles, including RBD region for analyzing neutralization antibody. Last, we found the persistence of NAb in
212 patients with COVID-19 around 70 days after symptom onset but we haven't measured the neutralization activity
213 of antibody for a longer time yet. Some longitudinal studies have reported that neutralization activity against
214 SARS-CoV-2 significantly declined as early as 6 weeks and that persisted as late as 5 months after symptom onset
215 [20, 21, 22]. Furthermore, the binding surface in SARS-CoV-2 RBD to ACE2 is reported to be less antigenic than
216 that of other S regions [23] so the antibody levels against RBD could go down earlier than antibody levels against
217 S1, which may affect chronological changes in NAb levels. Further longitudinal analysis of COVID-19 patients is
218 needed to understand immune memory after SARS-CoV-2 infection and vaccine.

219

220 **Conclusion**

221 To further elucidate humoral immunity and other aspects of the immune mechanism of COVID-19, we must
222 combine measurements, such as levels of IgG, IgA, and IgM against SARS-CoV-2 N, S1, and RBD and NAb
223 against SARS-CoV-2, in addition to using conventional testing methods (2019-nCoV IgG/IgM kit).

224

225 **Transparency declaration**

226 The authors declared the following potential conflicts of interest with respect to the research, authorship, and/or
227 publication of this article: 2019-nCoV IgM and IgG chemiluminescence immunoassay (CLIA) kits, Covid-2019
228 IgG/IgA/IgM Kit against N/S1/RBD antigen, and iFlash-2019- nCoV NAb were sponsored by Medical &

229 Biological Laboratories Co., Ltd. and Shenzhen YHLO Biotech Co., Ltd.

230

231 **Funding**

232 This study was supported by grants from the Peace Winds Japan, Kowa Co., the Research Center for Advanced
233 Science and Technology, and Kodama laboratory in the University of Tokyo.

234

235 **Acknowledgements**

236 We would like to thank all the healthcare workers involved in treating COVID-19 patients at Nissan Tamagawa
237 Hospital.

238

239 **Contribution**

240 Yudai Kaneko performed data curation and analysis and drafted the manuscript. Kazushige Fukui, Akashi
241 Taguchi, and Aya Nakayama performed data. Akira Sugiyama, Toshiya Tanaka, Youichiro Wada, Yoshiaki Wada,
242 Tatsuhiko Kodama, and Takeshi Kawamura administrated experiments in the project and critically reviewed the
243 manuscript. Kazumasa Koga collected samples. Yoshiro Kishi critically reviewed the manuscript. Chungeng Qian,
244 Fuzhen Xia, Fan He, Liang Zheng, and Yi Yu developed and provided the IgG, IgA, and IgM kits for SARS-CoV-2
245 N, S1, and RBD and the NAb kit against SARS-CoV-2. Wang Daming developed and provided the NAb kit against
246 SARS-CoV-2.

247 **References**

- 248 [1] World Health Organization. (2020) Coronavirus disease (COVID-19) dashboard. Available from:
249 <https://covid19.who.int/> Accessed 22nd August 2020
- 250 [2] Weiss SR, Leibowitz JL. Coronavirus pathogenesis. *Adv Virus Res.* 2011;81:85-164,
251 10.1016/B978-0-12-385885-6.00009-2.
- 252 [3] Hoffmann M, Kleine-Weber H, Schroeder S, Krüger N, Herrler T, Erichsen S et al. SARS-CoV-2 Cell Entry
253 Depends on ACE2 and TMPRSS2 and Is Blocked by a Clinically Proven Protease Inhibitor. *Cell.*
254 181(2):271-280.e8, 10.1016/j.cell.2020.02.052. (Epub ahead of print)
- 255 [4] Shi R, Shan C, Duan X, Chen Z, Liu P, Song J et al. A human neutralizing antibody targets the receptor-binding
256 site of SARS-CoV-2. *Nature.* 2020;584(7819):120-124. doi: 10.1038/s41586-020-2381-y. (Epub ahead of print)
- 257 [5] Cao Y, Su B, Guo X, Sun W, Deng Y, Bao L et al. Potent Neutralizing Antibodies against SARS-CoV-2
258 Identified by High-Throughput Single-Cell Sequencing of Convalescent Patients' B Cells. *Cell.*
259 2020;182(1):73-84.e16. doi: 10.1016/j.cell.2020.05.025. (Epub ahead of print)
- 260 [6] Infantino M, Grossi V, Lari B, Bambi R, Perri A, Manneschi M et al. Diagnostic accuracy of an automated
261 CLIA for anti-SARS-CoV-2 IgM and IgG antibodies: an Italian experience. *J Med Virol.* 2020; 92(9):1671-1675.
262 10.1002/jmv.25932. (Epub ahead of print)
- 263 [7] Jin Y, Wang M, Zuo Z, Fan C, Ye F, Cai Z et al. Diagnostic value and dynamic variance of serum antibody in
264 coronavirus disease. *Int J Infect Dis IJID Off Publ Int Soc Infect Dis* 2019;94:49-52. 10.1016/j.ijid.2020.03.065.
265 (Epub ahead of print)

- 266 [8] Zhang B, Zhou X, Zhu C, Song Y, Feng F, Qiu Y et al. Immune phenotyping based on the
267 neutrophil-to-lymphocyte ratio and IgG level predicts disease severity and outcome for patients with COVID-19.
268 *Front Mol Biosci* 2020;7:157, 10.3389/fmolb.2020.00157. (Epub ahead of print)
- 269 [9] Wang Z, Li H, Li J, Yang C, Guo X, Hu Z et al. Elevated serum IgM levels indicate poor outcome in patients
270 with coronavirus disease 2019 pneumonia: a retrospective case-control study. *medRxiv*. 2020;
271 10.1101/2020.03.22.20041285 (Epub ahead of print)
- 272 [10] Long QX, Deng HJ, Chen J, Hu JL, Liu BZ, Liao P et al. Antibody responses to SARS-CoV-2 in COVID-19
273 patients: the perspective application of serological tests in clinical practice. *medRxiv*. 2020.
274 10.1101/2020.03.18.20038018
- 275 [11] Dahlke C, Heidepriem J, Kobbe R, Santer R, Koch T, Fathi A et al. Distinct early IgA profile may determine
276 severity of COVID-19 symptoms: an immunological case series. *medRxiv*. 2020. 10.1101/2020.04.14.20059733
- 277 [12] Ma H, Zeng W, He H, Zhao D, Yang Y, Jiang D et al. COVID-19 diagnosis and study of serum SARS-CoV-2
278 specific IgA, IgM and IgG by chemiluminescence immunoanalysis. *medRxiv*. 2020; 10.1101/2020.04.17.20064907
- 279 [13] Lau EHY, Tsang OTY, Hui DSC, Kwan MYW, Chan WH, Chiu SS et al. Neutralizing antibody titres in
280 SARS-CoV-2 infections. *Nat Commun*. 2021;12(1):63. 10.1038/s41467-020-20247-4.
- 281 [14] Jeewandara C, Jayathilaka D, Gomes L, Wijewickrama A, Narangoda E, Idampitiya D et al. SARS-CoV-2
282 neutralizing antibodies in patients with varying severity of acute COVID-19 illness. *Sci Rep*. 2021;11(1):2062.
283 10.1038/s41598-021-81629-2.
- 284 [15] Legros V, Denolly S, Vogrig M, Boson B, Siret E, Rigaille J et al. A longitudinal study of SARS-CoV-2-infected

285 patients reveals a high correlation between neutralizing antibodies and COVID-19 severity. *Cell Mol Immunol.*

286 2021:1-10. 10.1038/s41423-020-00588-2. (Epub ahead of print)

287 [16] Isho B, Abe KT, Zuo M, Jamal AJ, Rathod B, Wang JH et al., Persistence of serum and saliva antibody

288 responses to SARS-CoV-2 spike antigens in COVID-19 patients. *Sci Immunol.* 2020;5(52):eabe5511. doi:

289 10.1126/sciimmunol.abe5511.

290 [17] Sterlin D, Mathian A, Miyara M, Mohr A, Anna F, Claër L et al. IgA dominates the early neutralizing antibody

291 response to SARS-CoV-2. *Sci Transl Med.* 202113(577):eabd2223. 10.1126/scitranslmed.abd2223. (Epub ahead of

292 print)

293 [18] Wan J, Xing S, Ding L, Wang Y, Gu C, Wu Y et al, Human-IgG-Neutralizing Monoclonal Antibodies Block

294 the SARS-CoV-2 Infection. *Cell Rep.* 2020;32(3):107918. doi: 10.1016/j.celrep.2020.107918. (Epub ahead of

295 print)

296 [19] Chi X, Yan R, Zhang J, Zhang G, Zhang Y, Hao M et al. A neutralizing human antibody binds to the

297 N-terminal domain of the Spike protein of SARS-CoV-2. *Science.* 2020;369(6504):650-655.

298 10.1126/science.abc6952. (Epub ahead of print)

299 [20] Prévost J, Gasser R, Beaudoin-Bussièrès G, Richard J, Duerr R, Laumaea A et al. Cross-sectional evaluation of

300 humoral responses against SARS-CoV-2 spike. *Cell Rep Med* 2020;1(7):100126, 10.1016/j.xcrm.2020.100126.

301 (Epub ahead of print)

302 [21] Wajnberg A, Amanat F, Firpo A, Altman DR, Bailey MJ, Mansour M et al. Robust neutralizing antibodies to

303 SARS-CoV-2 infection persist for months. *Science.* 2020;370(6521):1227-1230. 10.1126/science.abd7728. (Epub

304 ahead of print)

305 [22] Jeewandara C, Jayathilaka D, Gomes L, Wijewickrama A, Narangoda E, Idampitiya D et al. SARS-CoV-2

306 neutralizing antibodies in patients with varying severity of acute COVID-19 illness. *Sci Rep.* 2021;11(1):2062.

307 10.1038/s41598-021-81629-2.

308 [23] Hattori T, Koide A, Panchenko T, Romero LA, Teng KW, Tada T et al. The ACE2-binding interface of

309 SARS-CoV-2 Spike inherently deflects immune recognition. *bioRxiv* 2020; 10.1101/2020.11.03.365270. (Epub

310 ahead of print)

311 **Figure legends**

312 Table 1 Reagents for detecting antibody isotypes against SARS-CoV-2 structural proteins

Antibody isotype	Antigen			
	Nucleocapsid	Spike protein S1	Receptor binding domain	
IgG	iFlash-2019-nCoV IgG		Covid-2019 IgG Kit against RBD antigen	iFlash-2019-nCoV NAb
	Covid-2019 IgG Kit against N antigen	Covid-2019 IgG Kit against S1 antigen		
IgA	Covid-2019 IgA Kit against N antigen		Covid-2019 IgA Kit against RBD antigen	
	Covid-2019 IgA Kit against S1 antigen			
IgM	iFlash-2019-nCoV IgM		Covid-2019 IgM Kit against RBD antigen	
	Covid-2019 IgM Kit against N antigen	Covid-2019 IgM Kit against S1 antigen		

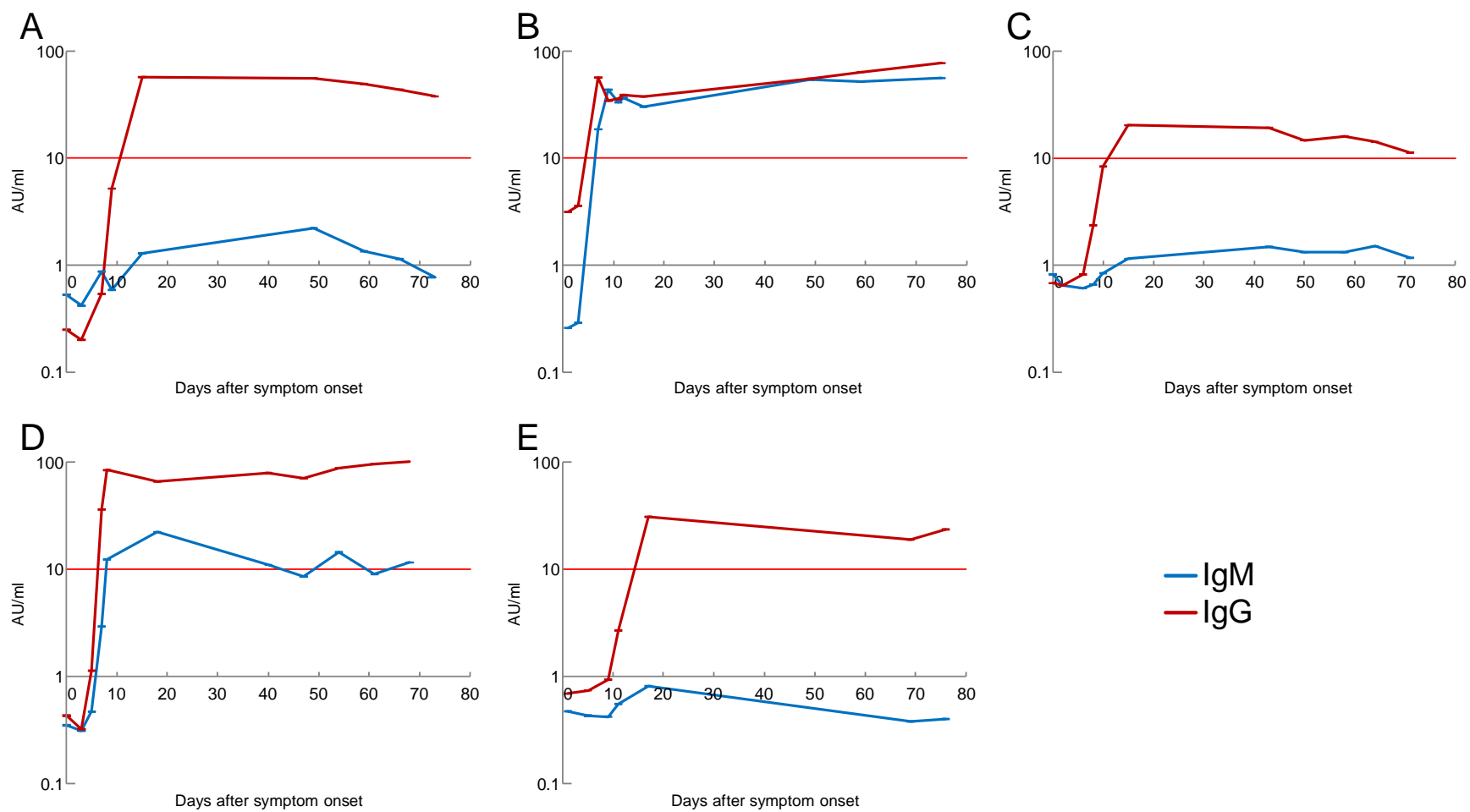
313 Table 2 Symptoms exhibited by the patients in this study

No.	Age range	Sex	Ct value	Symptoms						
				Fever	Cough	Sore throat	Dysgeusia	Headache	Diarrhoea	Dyspnea
P1	20 – 29	Male	32.9	Yes	Yes	Yes	No	No	Yes	No
P2	40 – 49	Male	26.6	Yes	No	No	No	Yes	No	Yes
P3	30 – 39	Male	22.3	No	No	No	Yes	No	No	No
P4	50 – 59	Male	18.6	Yes	No	Yes	No	No	No	Yes
P5	30 – 39	Male	30.5	Yes	No	No	No	No	No	No

314

315

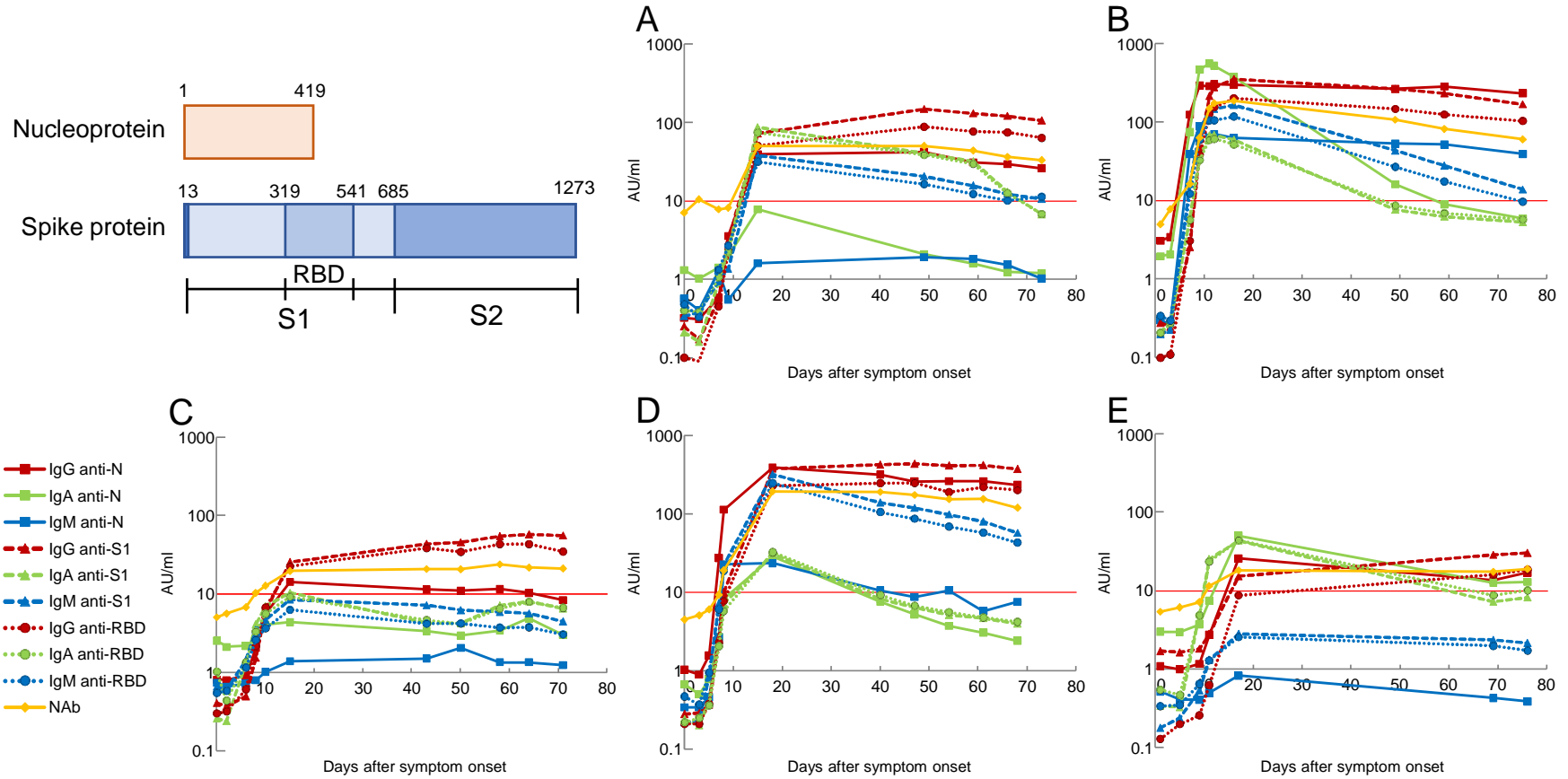
316 Figure 1. Timeline of IgG/IgM antibodies level against SARS-CoV-2 after symptom onset in patient P1(A), P2(B), P3(C), P4(D) and P5(E).



317

318

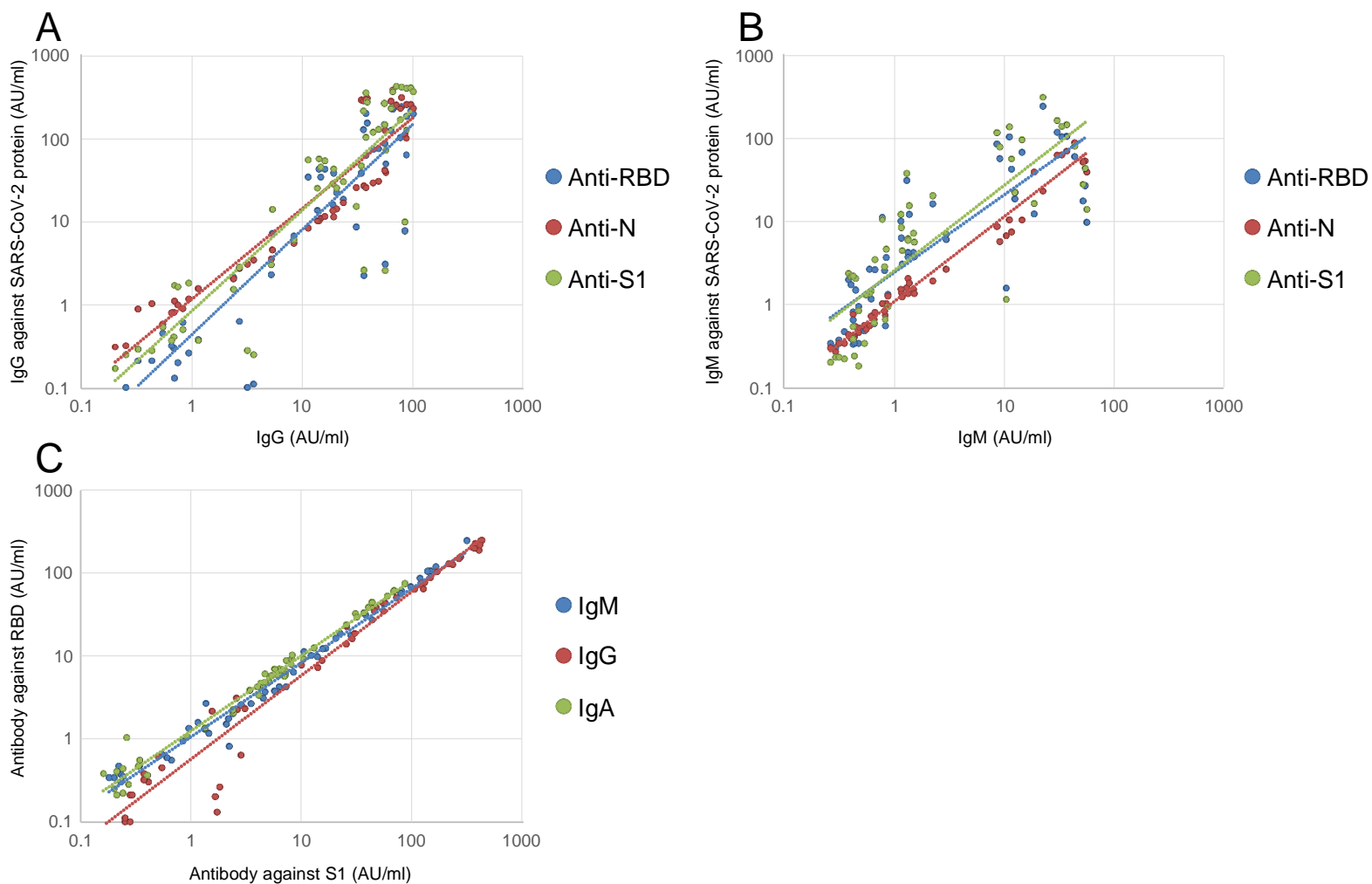
319 Figure 2. Timeline of IgG/IgA/IgM antibody levels against N/S1/RBD antigens of SARS-CoV-2 and neutralizing antibody against SARS-CoV-2 after symptom onset
 320 in patient P1(A), P2(B), P3(C), P4(D) and P5(E).



321

322

323 Figure 3 Correlations between IgG(A) /IgM(B) levels and the IgG/IgM against N, S1 and RBD. Correlations between IgG, IgA and IgM levels against S1 and those
324 against RBD (C).



325

326 Figure 4 Correlations between NAb levels and antibody levels against SARS-CoV-2 N(A), S1(B) and RBD(C).

