

The impact of co-circulating pathogens on SARS-CoV-2/COVID-19 surveillance

How concurrent epidemics may decrease true SARS-CoV-2 percent positivity.

Aleksandra Kovacevic^{1,2}, Rosalind M. Eggo³, Marc Baguelin^{4,5}, Matthieu Domenech de Cellès⁶, Lulla
Opatowski^{1,2}

¹Epidemiology and Modelling of Antibiotic Evasion Unit, Institut Pasteur, 25 rue du docteur Roux, Paris
75015, France

²Anti-infective Evasion and Pharmacoepidemiology Team, CESP, Université Paris-Saclay, UVSQ,
INSERM U1018 Montigny-le-Bretonneux, France

³Centre for Mathematical Modelling of Infectious Diseases, London School of Hygiene & Tropical
Medicine, Keppel Street, London. WC1E 7HT UK

⁴Department of Infectious Disease Epidemiology, Faculty of Epidemiology and Population Health,
London School of Hygiene and Tropical Medicine, London, UK

⁵MRC Centre for Global Infectious Disease Analysis and the Department of Infectious Disease
Epidemiology, Imperial College London, London, UK

⁶Max Planck Institute for Infection Biology, Infectious Disease Epidemiology group, Charitéplatz 1,
Campus Charité Mitte, 10117 Berlin, Germany

Corresponding author:

Aleksandra Kovacevic, Institut Pasteur, Epidemiology and Modelling of Antibiotic Evasion Unit, 25, rue
du Docteur Roux, 75015 Paris

e-mail: aleksandra.kovacevic@pasteur.fr

Summary:

COVID-19 surveillance indicators may be impacted by increased co-circulation of other respiratory viruses delaying control measure implementation. Continued surveillance through multiplex PCR testing in a subsample of the symptomatic population may play a role in fixing this problem.

Abstract

Background: Circulation of non-SARS-CoV-2 respiratory viruses during the COVID-19 pandemic may alter quality of COVID-19 surveillance, with possible consequences for real-time analysis and delay in implementation of control measures. Here, we assess the impact of an increased circulation of other respiratory viruses on the monitoring of positivity rates of SARS-CoV-2 and interpretation of surveillance data.

Methods: Using a multi-pathogen Susceptible-Exposed-Infectious-Recovered (SEIR) transmission model formalizing co-circulation of SARS-CoV-2 and another respiratory we assess how an outbreak of secondary virus may inflate the number of SARS-CoV-2 tests and affect the interpretation of COVID-19 surveillance data. Using simulation, we assess to what extent the use of multiplex PCR tests on a subsample of symptomatic individuals can support correction of the observed SARS-CoV-2 percent positive during other virus outbreaks and improve surveillance quality.

Results: Model simulations demonstrated that a non-SARS-CoV-2 epidemic creates an artificial decrease in the observed percent positivity of SARS-CoV-2, with stronger effect during the growth phase, until the peak is reached. We estimate that performing one multiplex test for every 1,000 COVID-19 tests on symptomatic individuals could be sufficient to maintain surveillance of other respiratory viruses in the population and correct the observed SARS-CoV-2 percent positive.

Conclusions: This study highlights that co-circulating respiratory viruses can disrupt SARS-CoV-2 surveillance. Correction of the positivity rate can be achieved by using multiplex PCR, and a low number of samples is sufficient to avoid bias in SARS-CoV-2 surveillance.

Keywords: COVID-19 surveillance; SARS-CoV-2; multiplex testing; co-circulating respiratory viruses; mathematical modelling

Introduction

Severe acute respiratory syndrome coronavirus 2 (SARS-CoV-2) caused a worldwide pandemic of coronavirus disease 2019 (COVID-19) prompting the need for global disease surveillance. Such global surveillance aims to monitor trends in COVID-19 to identify patterns of transmission and progression, estimate morbidity and mortality, and assess the impact of control measures [1]. Implementation of community control strategies (i.e., mask wearing, lockdowns, social distancing, and school closures) to limit COVID-19 transmission also impacted other common respiratory viruses, causing a drop in their detection. Indeed, national and international lockdowns and travel restrictions in March 2020 caused a sharp decline in seasonal influenza circulation in the United States, while the measures almost completely eliminated influenza in Southern Hemisphere countries such as Australia, Chile, and South Africa during their typical influenza season, June-August 2020 [2]. A similar drop in detection was observed for respiratory syncytial virus (RSV) [3, 4], while rhinovirus activity appeared to be low during the lockdown period [5]. However, when these measures are relaxed, circulation of viruses can reoccur, mediated by the resumption of social interactions. For example, data from NSW, Australia showed a surge in rhinovirus once schools reopened in mid-May 2020 [5]. Similarly, in Hong Kong, in England, and in France, school reopening in the fall of 2020 coincided with increased rhinovirus activity, particularly in school-aged children [6, 7, 8].

While the role of children in the transmission of SARS-CoV-2 is still debated and children are thought to be less efficient in transmitting the virus than adults, children are frequently the main drivers of transmission of other respiratory viruses such as rhinovirus and influenza [9-13]. Indeed, the sharp increase in rhinovirus detection among adults admitted to hospitals observed in Southampton, UK followed the reopening of schools in September 2020 [14]. As a consequence, circulation of other respiratory viruses during the pandemic may have an impact on COVID-19 surveillance. SARS-CoV-2 can cause a wide range of symptoms varying in severity [15], and many of these resemble symptoms of other influenza-like

illnesses (ILIs) and acute respiratory infections (ARIs) including influenza viruses, RSV, rhinovirus, and others. For example, the rise in symptomatic cases in weeks 34-40 observed in Canada reflected rapidly rising enterovirus/rhinovirus disease activity rather than COVID-19 [16]. Delay in trend interpretation may lead to delayed decision making and control measure implementation, which may have substantial negative consequences on the public health system due to the exponential nature of COVID-19 epidemic [17].

The World Health Organization recommends considering test positivity proportion over a two-week period as a key epidemiological indicator to assess and classify the level of community transmission [18], and therefore, other respiratory viruses could generate misinterpretation of COVID-19 surveillance data. For instance, Public Health France reports showed a decrease in SARS-CoV-2 symptomatic percent positive in September 2020, which is the time when schools reopened in France, although the daily number of symptomatic COVID-19 cases did not decrease [19]. We hypothesized that this marked decrease in SARS-CoV-2 symptomatic percent positive could be caused by increased co-circulation of another respiratory virus.

In this study, we used mathematical modelling to investigate the consequences of an increased circulation of other respiratory viruses both in terms of the number of SARS-CoV-2 tests taken, but also in the monitoring of percent positivity of SARS-CoV-2 tests and interpretation of surveillance data.

Methods

SARS-CoV-2 surveillance data

We focus here on the surveillance of symptomatic individuals as they are more likely to request SARS-CoV-2 tests. We used data on SARS-CoV-2 tests and positive cases in metropolitan France from Public Health France (SI-DEP) for the period from 08/24/20 to 19/10/20 [20]. Symptomatic individuals who started presenting symptoms 0-4 days before PCR test were classified as symptomatic (and referred

throughout as symptomatic). Asymptomatic individuals, individuals who started presenting symptoms 5-14 days or more before the COVID-19 test, and individuals whose symptomatic status was not recorded, were classified as other. We separated the data in such way because individuals having recent symptoms relative to the time of testing were more likely to be infected with a non-SARS-CoV-2 respiratory virus with shorter symptom duration where symptoms typically peak at 1-3 days [21], as opposed to individuals who were presenting symptoms for a long time before requesting COVID-19 test.

Hospitalization data

COVID-19 hospitalization data were acquired from Public Health France, SI-VIC (Information system for monitoring victims) from 08/24/20 to 19/10/20 and daily numbers were aggregated [22].

Neutral transmission model

We developed a multi-pathogen Susceptible-Exposed-Infectious-Recovered (SEIR) transmission model to explore and illustrate how cocirculation of another respiratory virus (called virus-2) with symptomatic overlap during the ongoing COVID-19 pandemic may affect test percent positivity. We build upon a model of two circulating pathogens [23] by adding Exposed compartment for both viruses to more closely match the natural history of SARS-CoV-2 and other respiratory viruses (Figure 2). The model is neutral assuming no interaction between two pathogens, i.e., no change in infectiousness of co-infected classes and no change in the probability of acquisition of a second infection following the first infection (sections S1.1 – S1.4, Supplementary Material).

Testing model

We modelled the total number of tests in symptomatic individuals by considering four different reasons for testing symptomatic individuals: (i) symptomatic individuals infected with SARS-CoV-2 (T_{cov}); (ii) we assumed that contact tracing and testing on a day t would generate an increase in test demand after some contact tracing delay, d in days, where we considered only contacts presenting symptoms at the time of

testing ($T_{CONTACTS}$); (iii) symptomatic individuals infected with virus-2 (T_{V2}); and finally (iv) we also considered a baseline number of symptomatic tests (T_b), i.e., symptomatic individuals getting tested for SARS-CoV-2, but truly negative for SARS-CoV-2 and negative for virus-2.

Thus, the total number of symptomatic SARS-CoV-2 tests T on a given day t is given by:

$$T(t) = T_b + T_{COV}(t) + T_{CONTACTS}(t - d) + T_{V2}(t)$$

Observed SARS-CoV-2 symptomatic percent positive P_+ on a day t is given by:

$$P_+(t) = \left(\frac{T_+(t)}{T(t)} \right) * 100$$

where T_+ corresponds to the number of SARS-CoV-2 positive tests among symptomatic individuals changing in time (see S2.1, Supplementary Material for details).

Testing strategies

To investigate if it was possible to correct the observed SARS-CoV-2 symptomatic positivity rate using the results of tests for virus-2 in a subsample of the population, we modelled the use of multiplex PCR tests along with standard PCR SARS-CoV-2 tests on a subsample of symptomatic individuals. We tested if results of multiplex tests could be used to maintain the surveillance of other viruses and determined what correction of the observed SARS-CoV-2 percent positive was needed during other virus outbreaks.

Therefore, we introduced two different types of tests into the model: RT-PCR (reverse transcription-polymerase chain reaction) SARS-CoV-2 test with sensitivity s_{pcr} and a multiplex PCR test that simultaneously tests for multiple pathogens, with average sensitivity s_m to detect SARS-CoV-2 or virus-2.

We assumed that the proportion of multiplex tests actually carried out across all tests on a given week was m .

We estimated the corrected SARS-CoV-2 symptomatic percent positive P_{C+} on a day t was computed as:

$$P_{C+}(t) = \left(\frac{T_+(t)}{T_C(t) + T_m(t) - T_{V2+}(t)} \right) * 100$$

where $T_C(t)$ represents the corrected total number of symptomatic SARS-CoV-2 tests on a given day t , $T_m(t)$ is the total number of symptomatic multiplex tests on a given day t and is given by:

$$T_m(t) = m * T(t)$$

and T_{V2+} is the number of confirmed positive symptomatic virus-2 cases detected with multiplex tests:

$$T_{V2+}(t) = m * T_{V2}(t)$$

The corrected total number of symptomatic SARS-CoV-2 tests $T_C(t)$ on a given day t is:

$$T_C(t) = T_{pcr}(t) * (1 - prop_{V2+}(t))$$

where $T_{pcr}(t)$ represents the number of symptomatic SARS-CoV-2 tests on day t and $prop_{V2+}(t)$ is the proportion of symptomatic virus-2 confirmed positive cases among all multiplex tests (S2.2, Supplementary Material).

To account for the impact of imperfect sensitivity of tests and multiplex test sample size in the uncertainty of indicators, we added a stochastic observation model. The observed number of positive tests for SARS-CoV-2 (T_{COV}) and virus-2 (T_{V2+}) respectively, were calculated assuming a binomial distribution (S2.3, Supplementary Material).

Simulation study

We simulated the introduction of an outbreak of virus-2 in a population with circulating SARS-CoV-2 coinciding with a particular event that increases social interactions (e.g., school reopening). We assumed 6% of the population had already been infected and became immune to SARS-CoV-2, which matches the situation of France in September 2020 at the time of school reopening [24]. We also assumed that 70% of the population is either immune to virus-2 or will not get exposed to the virus at all due to generally never being in contact with school children, social distancing measures, and implemented community control strategies (S1.5, Supplementary Material). We tracked two key epidemiological indicators: number of tests requested and percent positivity.

Sensitivity analyses

First, we varied the sensitivity of multiplex PCR test sensitivity (s_m), while maintaining the same sensitivity of SARS-CoV-2 PCR test (s_{pcr}) to investigate its impact on the corrected percent positive of SARS-CoV-2. We also evaluated a range of proportion values of multiplex tests ($m = 0.0005; 0.001; 0.002; 0.005$) to assess how sample size of multiplex tests affects the correction of the observed symptomatic SARS-CoV-2 percent positive. Then, we conducted additional sensitivity analyses varying s_{pcr} and the proportion of symptomatic individuals infected with virus-2 (s_2), while maintaining other parameters the same. Finally, we investigated the impact of R_0 (basic reproduction number) of virus-2 and the initial proportion of the population immune to SARS-CoV-2 and to virus-2.

R (version 4.0.3) and RStudio (version 1.3.1093) were used for modelling transmission, testing, and all statistical analyses [25, 26].

Results

Data from Public Health France show a decrease in symptomatic percent positive for SARS-CoV-2 in France after September 1st, 2020, synchronous with school reopening, while the hospitalization data show a steady increase (Figure 3D). However, this decrease in positivity rate was not due to a decline in SARS-CoV-2 positive tests among symptomatic individuals (Figure 1a). Moreover, the number of tests for symptomatic individuals increased during September 2020 as well as the number of other tests (Figure 1b).

In our simulation study, the outbreak of virus-2 lasted for 1.5 months with a peak reached after two weeks (Figure 3A). These first weeks of virus-2 circulation led to up to 23% increase in the number of daily tests performed on symptomatic individuals (Figure 3B). The observed SARS-CoV-2 percent positive among symptomatic tests decreased sharply in the first two weeks, underestimating the true percent positivity by up to 3% (23% relative decrease), and then progressively increased to converge to the true percent positivity when the outbreak was nearly extinct (Figure 3C). We determined that a testing frequency m of 0.1% ($m=0.001$; i.e., performing one multiplex tests for every 1,000 symptomatic tests), which most closely represents realistic proportion of multiplex tests currently used in France to test for non-SARS-CoV-2 respiratory viruses [7], was sufficient to provide a correction that closely follows real percent positive of SARS-CoV-2 (Figure 3C).

Sensitivity analyses showed that changing the sensitivity of the multiplex assays (s_m) affected the corrected percent positive of SARS-CoV-2, with higher values of s_m providing better estimates for real percent positive (S2.4.1, Supplementary Material). Similarly, the correction of the observed SARS-CoV-2 percent positive was negatively affected by the lower proportion of the multiplex PCR testing (m) used in the model, and vice versa. Larger proportion of multiplex PCR tests used improved the correction of the observed SARS-CoV-2 percent positive (S2.4.2, Supplementary Material). The correction quality was not affected by varying s_{per} , s_2 , R_0 , or the initial proportion of the population immune to SARS-CoV-2 and to virus-2. (S2.4.3 – S2.4.7, Supplementary Material).

Discussion

The implementation of the community control strategies to limit transmission of SARS-CoV-2 also decreased the circulation of other respiratory viruses. However, once control measures are relaxed and when social interactions are resumed, we are likely to observe increased activity of other respiratory viruses [6, 7, 8]. Using model simulations of two co-circulating pathogens, we showed that an outbreak of a secondary respiratory virus during COVID-19 pandemic may increase SARS-CoV-2 testing demand and, as a consequence, hinder the detection of the initial increase of the true percent positivity of SARS-CoV-2 and may lead to the overall underestimation of the SARS-CoV-2 epidemic. We proposed to correct the observed positivity rate of SARS-CoV-2 by using multiplex PCR testing in a subsample of the symptomatic population. We estimate that performing one multiplex test for every 1,000 of COVID-19 tests could be enough to significantly improve real time epidemiological interpretation.

Underreporting of infection is a challenge in all pandemics and epidemics including this one [27, 28], and we show here that short-term alterations in surveillance due to other epidemics may affect interpretation of COVID-19 trends. Indeed, after schools reopened, multiplex testing detected circulation of rhinovirus in France (S2.5, Supplementary Material), which supports our hypothesis that secondary virus might have been responsible for decreased COVID-19 epidemic indicators. Positivity rate, a key indicator monitored for epidemic control and public health decision-making [18] appears particularly sensitive to this effect. Moreover, maintaining surveillance of other respiratory viruses should aid public health officials to better anticipate increases in SARS-CoV-2 testing demand.

The use of multiplex PCR assays for SARS-CoV-2 detection in a sample of symptomatic cases has already proved effective in detecting other respiratory viruses: a study in Northern California in March 2020 found that 26.7% of symptomatic patients who tested negative for SARS-CoV-2 were positive for

one or more additional pathogens, most often rhinovirus/enterovirus [29]. Another study found that 13.1% of patients who tested negative for SARS-CoV-2 were positive for at least one non-SARS-CoV-2 respiratory viral pathogen [30]. These studies not only reflect that the non-SARS-CoV-2 respiratory viruses are circulating in our communities, but that symptomatic cases due to other respiratory pathogens contribute to the overall number of negative SARS-CoV-2 tests. Increase in the hospitalization data and the number of SARS-CoV-2 positive tests in symptomatic individuals during observed decrease in symptomatic percent positive suggest that decrease in COVID-19 cases was not responsible for the decrease in test positivity rate. Considering that rhinovirus can cause fever and severe sore throat in children, and epidemics of rhinovirus are common on school reopening [31, 32], it is likely that symptomatic children and parents requested testing for SARS-CoV-2, thus increasing the number of negative tests and inadvertently reducing the test-positivity rate during this time.

To keep our model simple, the mechanisms are a simplification of the real processes, and therefore, there are limitations. We did not incorporate testing capacity within this model, and we assumed that all symptomatic individuals requesting testing on a given day will be able to do so. Additionally, we assumed that interactions between viruses were neutral, meaning that the presence of one of the viruses did not affect (promote nor protect against) infection with the other virus. Recent studies have suggested some possible protection from COVID-19 infection conferred by rhinovirus interference with SARS-CoV-2 replication kinetics and this may warrant further exploration at the population level [33].

We proposed a method to correct the observed positivity rate of SARS-CoV-2 during an outbreak of another respiratory virus, to help reduce the overall underestimation of SARS-CoV-2 in the population. Clinical sensitivities between tests can differ markedly depending on the test manufacturer and in the case of multiplex PCR testing, sensitivity also depends on the pathogen being detected [30, 34]. With the overall high sensitivity of both SARS-CoV-2 and multiplex PCR tests, correcting the observed positivity rate could be a very effective way of minimizing the underestimation of the true COVID-19 burden in the community.

Furthermore, multiplex testing, which in France is generally performed by ‘Sentinelles’ physicians on patients seen in the consultation to test for various respiratory viruses, could be incorporated into laboratory testing for SARS-CoV-2 to improve the surveillance and detection of other respiratory viruses, which in turn may improve detection of the real percent positive of SARS-CoV-2 individuals in the population.

Using modelling simulations, we highlight that co-circulating respiratory viruses impact COVID-19 surveillance. Our results demonstrate that systematic use of multiplex PCR tests on a subsample of symptomatic individuals is key to maintaining unbiased surveillance.

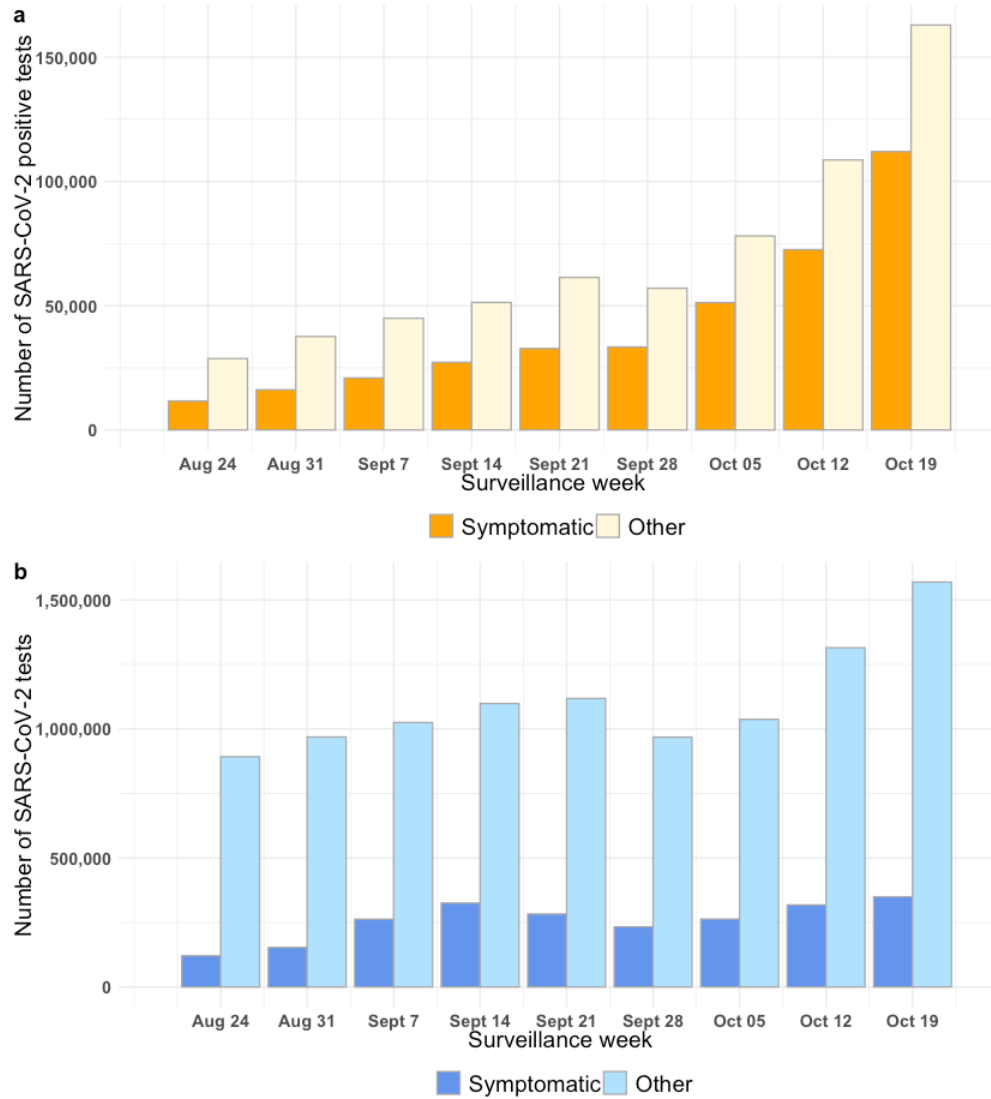


Figure 1. SARS-CoV-2 weekly testing data in France from 08/24/2020 to 10/19/2020 [20]. a) Number of positive SARS-CoV-2 tests b) Total number of SARS-CoV-2 tests.

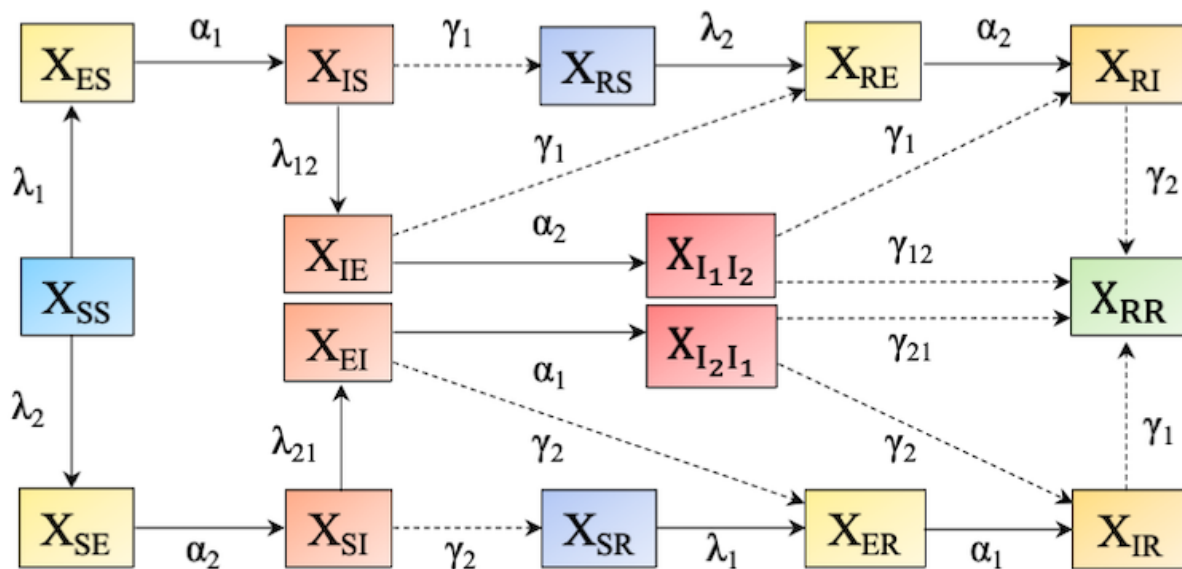


Figure 2. **Model formalizing the transmission of two cocirculating viruses in a population.** Individuals are split into compartments (X_{ij}) according to their status with respect to the two pathogens. In X_{ij} , subscript i specifies individual's status to virus-1 (SARS-CoV-2) and subscript j status to virus-2. Letters S, E, I, and R stand for Susceptible, Exposed, Infected, and Recovered, respectively. Rates of transition between compartments are infectiousness onset rates (α_1, α_2) and recovery rates (γ_1, γ_2). λ_1 and λ_2 stand for the forces of infection for susceptible hosts by virus-1, i.e., SARS-CoV-2 and virus-2, respectively; λ_{21} and λ_{12} are forces of infection by virus-1 (λ_{21}) and virus-2 (λ_{12}) for hosts already infected by the other pathogen (S1.3, Supplementary Material).

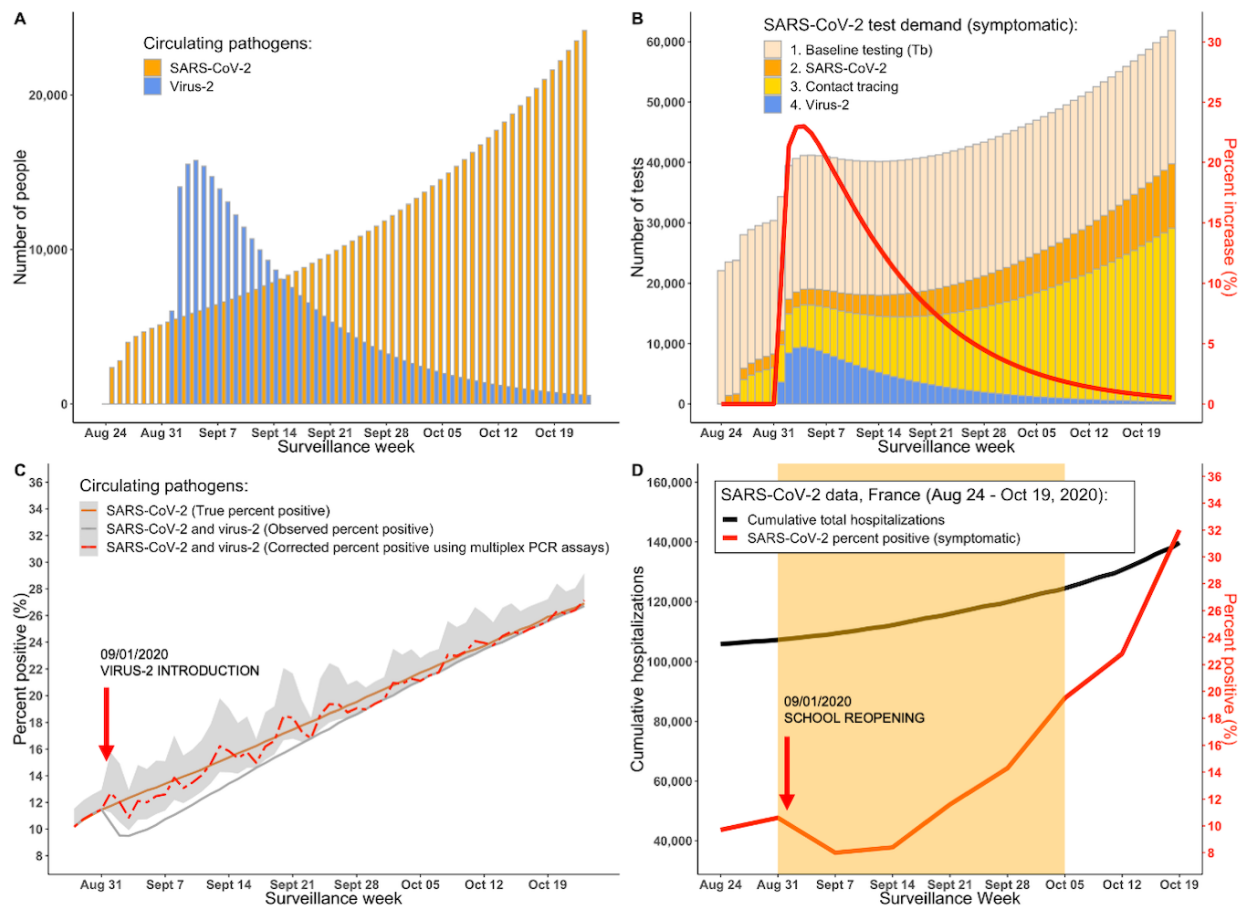


Figure 3. Impact on surveillance indicators - Model simulations of the virus-2 introduction in a population with the ongoing SARS-CoV-2 epidemic and COVID-19 hospitalization and testing data in France from 08/24/2020 to 10/19/2020. **A.** Simulations of true daily symptomatic incidences of SARS-CoV-2 and virus-2. **B.** Simulations of SARS-CoV-2 test demand (symptomatic) including tests requested by individuals infected with both viruses, contacts of previously identified cases, and a constant testing baseline. Red line represents percent increase in SARS-CoV-2 test demand. **C.** Simulated SARS-CoV-2 percent positive among all tests for symptomatic individuals. 09/01/2020 marks the introduction time of virus-2 in the population (e.g., following the school reopening). The outbreak of virus-2 decreases the observed COVID-19 percent positive (grey solid line) relative to the true percent positive (orange solid line) assuming testing demand and surveillance is not affected by virus-2. Observed percent positive can be corrected by testing a proportion (m) of symptomatic cases with multiplex PCR assays. Corrected percent positive is conducted with testing frequency of 1 multiplex per 1,000 daily tests (red dashed line with 95% confidence intervals). All simulations are run assuming $s_{pcr} = 95\%$ and $s_m = 90\%$ (S1.5, Supplementary Material). **D.** SARS-CoV-2 hospitalizations [22] and symptomatic percent positivity [20] in France from 08/24/20 to 10/19/20. Orange shaded area represents observed underestimation of SARS-CoV-2 symptomatic percent positivity.

References

1. World Health Organization. Public health surveillance for COVID-19: interim guidance, 16 December 2020. Available at: <https://apps.who.int/iris/handle/10665/337897>.
2. Olsen SJ, Azziz-Baumgartner E, Budd AP, et al. Decreased influenza activity during the COVID-19 pandemic - United States, Australia, Chile, and South Africa, 2020. *MMWR Morb Mortal Wkly Rep* 2020; 69:1305–1309. Available at: <https://doi.org/10.15585/mmwr.mm6937a6>.
3. Kuitunen I, Artama M, Mäkelä L, et al. Effect of social distancing due to the COVID-19 pandemic on the incidence of viral respiratory tract infections in children in Finland during early 2020. *Pediatr Infect Dis J* 2020; 39:E423–E427. Available at: <https://doi.org/10.1097/inf.0000000000002845>.
4. Yeoh DK, Foley DA, Minney-Smith CA, et al. Impact of coronavirus disease 2019 public health measures on detections of influenza and respiratory syncytial virus in children during the 2020 Australian winter. *Clin Infect Dis* 2020; :1–4. Available at: <http://dx.doi.org/10.1093/cid/ciaa1475>.
5. NSW Government. Covid-19 weekly surveillance in NSW, 24 December 2020. Available at: <https://www.health.nsw.gov.au/Infectious/covid-19/Documents/covid-19-surveillance-report-20201219.pdf>.
6. Fong M, Leung N, Cowling BJ, et al. Upper respiratory infections in schools and childcare centers reopening after COVID-19 dismissals, Hong Kong. *Emerg Infect Dis*. 2021; 27(5):1525-1527. Available at: <https://doi.org/10.3201/eid2705.210277>.
7. Sentinels Network, INSERM, Sorbonne University. Sentinelles weekly report, 21 February 2021. Available at: <https://www.sentiweb.fr/document.php?doc=5211>.
8. Public Health England. Weekly coronavirus disease 2019 (COVID-19) surveillance report, 2 October 2020. Available at: <https://www.gov.uk/government/publications/national-covid-19-surveillance-reports>.
9. Cauchemez S, Valleron AJ, Boëlle PY, et al. Estimating the impact of school closure on influenza transmission from Sentinel data. *Nature* 2008; 452:750–754. Available at: <https://doi.org/10.1038/nature06732>.
10. Peltola V, Waris M, Österback R, et al. Rhinovirus transmission within families with children: incidence of symptomatic and asymptomatic infections. *J Infect Dis* 2008; 197:382–389. Available at: <https://doi.org/10.1086/525542>.
11. Baguelin M, Flasche S, Camacho A, et al. Assessing optimal target populations for influenza vaccination programmes: an evidence synthesis and modelling study. *PLoS Med* 2013; 10. Available at: <https://doi.org/10.1371/journal.pmed.1001527>.
12. Davies NG, Klepac P, Liu Y, et al. Age-dependent effects in the transmission and control of COVID-19 epidemics. *Nat Med* 2020; 26:1205–1211. Available at: <https://doi.org/10.1038/s41591-020-0962-9>.
13. Lee B, Raszka W V. COVID-19 transmission and children: the child is not to blame. *Pediatrics* 2020; 146:e2020004879. Available at: <https://doi.org/10.1542/peds.2020-004879>.
14. Poole S, Brendish NJ, Tanner AR, et al. Physical distancing in schools for SARS-CoV-2 and the resurgence of rhinovirus. *Lancet Respir Med* 2020; 8:e92–e93. Available at: [https://doi.org/10.1016/s2213-2600\(20\)30502-6](https://doi.org/10.1016/s2213-2600(20)30502-6).
15. Guan W, Ni Z, Hu Y, et al. Clinical characteristics of coronavirus disease 2019 in China. *N Engl J Med* 2020; 382:1708–1720. Available at: <https://doi.org/10.1056/nejmoa2002032>.
16. Maharaj AS, Parker J, Hopkins JP, et al. The effect of seasonal respiratory virus transmission on syndromic surveillance for COVID-19 in Ontario, Canada. *Lancet Infect Dis* 2021; 3099:1–2. Available at: <https://doi.org/10.1101/2020.12.02.20242735>.

17. Lammers J, Crusius J, Gast A. Correcting misperceptions of exponential coronavirus growth increases support for social distancing. *Proc Natl Acad Sci USA* **2020**; 117:16264–16266. Available at: <https://www.pnas.org/content/pnas/117/28/16264.full.pdf>.
18. World Health Organization. Considerations for implementing and adjusting public health and social measures in the context of COVID-19: interim guidance, 4 November **2020**. Available at: <https://apps.who.int/iris/handle/10665/336374>.
19. Public Health France. COVID-19: epidemiological update of 04 February **2021**. Available at: <https://www.santepubliquefrance.fr/maladies-et-traumatismes/maladies-et-infections-respiratoires/infection-a-coronavirus/documents/bulletin-national/covid-19-point-epidemiologique-du-4-fevrier-2021>.
20. Public Health France. SI-DEP. Number of COVID-19 tests. Accessed: 04 March **2021**.
21. Allan GM, Arroll B. Prevention and treatment of the common cold: Making sense of the evidence. *CMAJ* **2014**; 186:190–199. Available at: <https://www.cmaj.ca/content/186/3/190>.
22. Public Health France. SI-VIC. Number of hospitalizations Accessed: 04 March 2021.
23. Opatowski L, Baguelin M, Eggo RM. Influenza interaction with cocirculating pathogens and its impact on surveillance, pathogenesis, and epidemic profile: a key role for mathematical modelling. *PLoS Pathog* **2018**; 14:1–28. Available at: <https://doi.org/10.1371/journal.ppat.1006770>.
24. Hozé N, Paireau J, Lapidus N, et al. Monitoring the proportion infected by SARS-CoV-2 from age-stratified hospitalisation and serological data. *medRxiv* **2021**. Available at: <https://doi.org/10.1101/2021.01.11.21249435>.
25. R Core Team. R: A language and environment for statistical computing. R foundation for statistical computing, Vienna, Austria 2020. Available at: <https://www.R-project.org/>.
26. RStudio Team. RStudio: Integrated development for R. RStudio, PBC, Boston, MA 2020. Available at: <http://www.rstudio.com/>.
27. Alwan NA. Surveillance is underestimating the burden of the COVID-19 pandemic. *Lancet* **2020**; 396:e24. Available at: [https://doi.org/10.1016/s0140-6736\(20\)31823-7](https://doi.org/10.1016/s0140-6736(20)31823-7).
28. Pullano G, Di Domenico L, Sabbatini CE, et al. Underdetection of cases of COVID-19 in France threatens epidemic control. *Nature* **2020**; 590:134–9. Available at: <https://doi.org/10.1038/s41586-020-03095-6>.
29. Kim D, Quinn J, Pinsky B, et al. Rates of co-infection between SARS-CoV-2 and other respiratory pathogens. *J Am Med Assoc* **2020**; 323:2085–2086. Available at: <https://doi.org/10.1001/jama.2020.6266>.
30. Nowak MD, Sordillo EM, Gitman MR, et al. Coinfection in SARS-CoV-2 infected patients: Where are influenza virus and rhinovirus/enterovirus? *J Med Virol* **2020**; 92:1699–1700. Available at: <https://doi.org/10.1002/jmv.25953>.
31. Johnston NW, Johnston SL, Duncan JM, et al. The September epidemic of asthma exacerbations in children: a search for etiology. *J Allergy Clin Immunol* **2005**; 115:132–138. Available at: <https://doi.org/10.1016/j.jaci.2004.09.025>.
32. Eggo RM, Scott JG, Galvani AP, et al. Respiratory virus transmission dynamics determine timing of asthma exacerbation peaks: evidence from a population-level model. *Proc Natl Acad Sci USA* **2016**; 113:2194–2199. Available at: <https://doi.org/10.1073/pnas.1518677113>.
33. Dee K, Goldfarb DM, Haney J, et al. Human rhinovirus infection blocks SARS-CoV-2 replication within the respiratory epithelium: implications for COVID-19 epidemiology. *J Infect Dis* **2021**, jia147. Advance online publication. Available at: <https://doi.org/10.1093/infdis/jia147>.
34. Lee WM, Grindle K, Pappas T, et al. High-throughput, sensitive, and accurate multiplex PCR-microsphere flow cytometry system for large-scale comprehensive detection of respiratory viruses. *J Clin Microbiol* **2007**; 45:2626–2634. Available at: <https://doi.org/10.1128/jcm.02501-06>.

Acknowledgements

We want to thank David RM Smith for helpful discussion and valuable advice on multiplex testing, and Sylvie van der Werf, Cécile Souty, Pierre-Yves Boëlle, and Daniel Levy-Bruhl for their helpful discussion.

Funding

This work was supported by internal resources from the French National Institute for Health and Medical Research, the Institut Pasteur, and the University of Versailles–Saint-Quentin-en-Yvelines / University of Paris-Saclay, and by the grant (AAP Covid-19 2020) from University of Paris-Saclay. AK was funded by the French Government’s “Investissement d’Avenir” program, Laboratoire d’Excellence “Integrative Biology of Emerging Infectious Diseases” (grant number ANR-10-LABX-62 IBEID). RME acknowledges an HDR UK Innovation Fellowship (grant number MR/S003975/1), MRC (grant number MC_PC 19065), and NIHR (grant number NIHR200908) for the Health Protection Research Unit in Modelling and Economics at LSHTM. MB acknowledges funding from the MRC Centre for Global Infectious Disease Analysis (reference MR/R015600/1), jointly funded by the UK Medical Research Council (MRC) and the UK Foreign, Commonwealth & Development Office (FCDO), under the MRC/FCDO Concordat agreement and is also part of the EDCTP2 programme supported by the European Union. The views expressed in this publication are those of the author(s) and not necessarily those of the NIHR or the UK Department of Health and Social Care.

Conflict of Interest

LO received research grants from Pfizer through her institution on unrelated research topics. MDdC received postdoctoral funding (2017–2019) from Pfizer and consulting fees from GSK.

Supplementary Material

The impact of co-circulating pathogens on SARS-CoV-2/COVID-19 surveillance

How concurrent epidemics may decrease true SARS-CoV-2 percent positivity.

Aleksandra Kovacevic, Rosalind M. Eggo, Marc Baguelin, Matthieu Domenech de Cellès, Lulla
Opatowski

Table of contents

- **S1. Transmission model**

 - S1.1 Model parameters

 - S1.2 Interaction parameters

 - S1.3 Forces of infection

 - S1.4 Transmission model equations

 - S1.5 Simulation study

- **S2. Testing model**

 - S2.1 Number of tests

 - S2.2 Correction of the observed SARS-CoV-2 symptomatic percent positive

 - S2.3 Stochastic reporting of test results

 - S2.4 Sensitivity analyses

 - S2.5 Rhinovirus circulation in France

- **References**

S1. Transmission model

S1.1 Model parameters

Parameter	Meaning	Value	Source
R_{01}	SARS-CoV-2 basic reproduction number in the general community on 01/09/2020 at the time of school reopening	1.4	Value from the time of school opening on 01/09/2020 [1]
R_{02}	Virus 2 basic reproduction number at the time of school reopening	1.9	Assumed, [2]
γ_1	Recovery rate for SARS-CoV-2	1/7 day ⁻¹	[3]
γ_2	Recovery rate for virus 2	1/5 day ⁻¹	[2]
α_1	Infectiousness onset rate for SARS-CoV-2	1/2.9 day ⁻¹	[4]
α_2	Infectiousness onset rate for virus 2	1/2 day ⁻¹	[2]
s_1	Proportion of infected with SARS-CoV-2 that is symptomatic at the time of testing	0.5	[5]
s_2	Proportion of infected with virus 2 that is symptomatic at the time of testing	0.7	Assumed
p_1, p_2	Proportion of symptomatic individuals infected with either pathogen that gets tested	0.6	Assumed
s	Proportion of individuals that is symptomatic, but negative among all PCR tests (before virus 2 outbreak)	0.11	Estimated from data during weeks 33 and 34; Data are from Ref. [6]
b	Proportion of the total population N getting tested on a daily basis (total daily PCR tests)	0.003	Estimated from data during weeks 35-44; Data are from Ref. [6]
T_b	Symptomatic testing baseline (getting tested daily for SARS-CoV-2, but truly negative for SARS-CoV-2)	$b*N*s$	Calculated using estimated values s and b
τ	Number of contacts getting tested on average per one positive test during September 2020	3	[5]
d	Contact tracing delay between a positive test and testing their contacts	2 days	Assumed
m	Proportion of multiplex PCR tests	0.001	Varied
c	Proportion of SARS-CoV-2 PCR tests	1-m	Calculated from m
s_{per}	SARS-CoV-2 PCR test sensitivity	95%	[7]
s_m	Multiplex PCR test sensitivity	90%	Assumed the lower end of multiplex FilmArray Respiratory Panel [8, 9]

S1.2 Interaction parameters

Four interaction parameters modulating the pathogen's transmissibility

Pathogen	Baseline transmissibility	Change in infectiousness of co-infected classes	Probability of acquisition of a second infection following a first infection
Virus 1 (SARS-CoV-2)	β_1	$\sigma_1 =$ change in infectiousness of Virus 2 if co-infected with Virus 1	$\delta_1 =$ probability of acquiring Virus 2 when already infected with Virus 1
Virus 2	β_2	$\sigma_2 =$ change in infectiousness of Virus 1 if co-infected with Virus 2	$\delta_2 =$ probability of acquiring Virus 1 when already infected with Virus 2

We assume baseline scenario, no interaction between two pathogens: $\sigma_1 = \sigma_2 = \delta_1 = \delta_2 = 1$ and that recovery rates of dually infected compartment are: $\gamma_1 = \gamma_{21}$ and $\gamma_2 = \gamma_{12}$

$$\beta_1 = R_{01} * \gamma_1$$

$$\beta_2 = R_{02} * \gamma_2$$

S1.3 Forces of infection

$$\lambda_1 = \beta_1 \left(\frac{X_{IS}}{N} + \sigma_2 \frac{X_{I_1 I_2}}{N} + \sigma_2 \frac{X_{I_2 I_1}}{N} + \frac{X_{IR}}{N} + \sigma_2 \frac{X_{IE}}{N} \right)$$

$$\lambda_{21} = \delta_2 \beta_1 \left(\frac{X_{IS}}{N} + \sigma_2 \frac{X_{I_1 I_2}}{N} + \sigma_2 \frac{X_{I_2 I_1}}{N} + \frac{X_{IR}}{N} + \sigma_2 \frac{X_{IE}}{N} \right)$$

$$\lambda_2 = \beta_2 \left(\frac{X_{SI}}{N} + \sigma_1 \frac{X_{I_1 I_2}}{N} + \sigma_1 \frac{X_{I_2 I_1}}{N} + \frac{X_{RI}}{N} + \sigma_1 \frac{X_{EI}}{N} \right)$$

$$\lambda_{12} = \delta_1 \beta_2 \left(\frac{X_{SI}}{N} + \sigma_1 \frac{X_{I_1 I_2}}{N} + \sigma_1 \frac{X_{I_2 I_1}}{N} + \frac{X_{RI}}{N} + \sigma_1 \frac{X_{EI}}{N} \right)$$

S1.4 Transmission model equations

Susceptible:

$$\frac{dX_{SS}}{dt} = -\lambda_1 X_{SS} - \lambda_2 X_{SS}$$

Exposed:

$$\frac{dX_{ES}}{dt} = +\lambda_1 X_{SS} - \alpha_1 X_{ES}$$

$$\frac{dX_{SE}}{dt} = +\lambda_2 X_{SS} - \alpha_2 X_{SE}$$

Infected:

$$\frac{dX_{IS}}{dt} = +\alpha_1 X_{ES} - \lambda_{12} X_{IS} - \gamma_1 X_{IS}$$

$$\frac{dX_{SI}}{dt} = +\alpha_2 X_{SE} - \lambda_{21} X_{SI} - \gamma_2 X_{SI}$$

Infected with one virus, exposed to the other:

$$\frac{dX_{IE}}{dt} = +\lambda_{12} X_{IS} - \alpha_2 X_{IE} - \gamma_1 X_{IE}$$

$$\frac{dX_{EI}}{dt} = +\lambda_{21} X_{SI} - \alpha_1 X_{EI} - \gamma_2 X_{EI}$$

Double infected:

$$\frac{dX_{I_1 I_2}}{dt} = +\alpha_2 X_{IE} - \gamma_{12} I_{12} - \gamma_1 X_{I_1 I_2}$$

$$\frac{dX_{I_2 I_1}}{dt} = +\alpha_1 X_{EI} - \gamma_{21} I_{21} - \gamma_2 X_{I_2 I_1}$$

Recovered from one virus:

$$\frac{dX_{RS}}{dt} = +\gamma_1 X_{IS} - \lambda_2 X_{RS}$$

$$\frac{dX_{SR}}{dt} = +\gamma_2 X_{SI} - \lambda_1 X_{SR}$$

Recovered from one virus, exposed to the other:

$$\frac{dX_{RE}}{dt} = +\lambda_2 X_{RS} - \alpha_2 X_{RE} + \gamma_1 X_{IE}$$

$$\frac{dX_{ER}}{dt} = +\lambda_1 X_{SR} - \alpha_1 X_{ER} + \gamma_2 X_{EI}$$

Recovered from one virus, infected with the other:

$$\frac{dX_{RI}}{dt} = +\alpha_2 X_{RE} - \gamma_2 X_{RI} + \gamma_1 X_{I_1 I_2}$$

$$\frac{dX_{IR}}{dt} = +\alpha_1 X_{ER} - \gamma_1 X_{IR} + \gamma_2 X_{I_2 I_1}$$

Recovered from both viruses:

$$\frac{dX_{R_1R_2}}{dt} = +\gamma_{12}X_{I_1I_2} + \gamma_2X_{RI} + \gamma_{21}X_{I_2I_1} + \gamma_1X_{IR}$$

S1.5 Simulation study

Initialization. The modelling study was simulated on the population of 67 million people. Model was initialized assuming no interaction scenario, with 6% of the population being in X_{RS} compartment [10] and 70% of the population in X_{SR} compartment allowing for virus-2 outbreak to finish within two-month period. SARS-CoV-2 was initialized with 12,060 individuals in the Exposed (X_{ES}) compartment and 42,210 individuals in the Infected (X_{IS}) compartment from the week before. Virus-2 was introduced on day 7 with 300,000 individuals in total, with 270,000 being in the Infected (X_{SI}) compartment and 30,000 individuals being in Exposed (X_{SE}) compartment.

We simulated an outbreak of virus-2 for 8 weeks. Parameter values used in the study correspond to the real time values reported right before and during the time when a decrease in symptomatic percent positive of SARS-CoV-2 was observed in the French population – starting in the first week of September, the time of school opening. Two pathogens had different transmission characteristics at the time of an outbreak of virus-2 (SARS-CoV-2: $R_{01} = 1.4$, $\gamma_1 = 1/7 \text{ day}^{-1}$, $\alpha_1 = 1/2.9 \text{ day}^{-1}$; virus-2: $R_{02} = 1.9$, $\gamma_2 = 1/5 \text{ day}^{-1}$, $\alpha_2 = 1/2 \text{ day}^{-1}$) with virus-2 having a greater basic reproduction number (R_0) because of its ability to spread easily among school children, and a faster recovery rate (i.e., shorter infectious period).

S2. Testing model

S2.1 Number of tests

Baseline number of symptomatic tests (T_b) is calculated by assuming that a constant proportion of population N is tested on a daily basis (b) with a proportion of this population being symptomatic (s) due to reasons other than COVID-19 infection or virus-2 outbreak. Baseline symptomatic tests are assumed to be negative for both SARS-CoV-2 and virus-2.

$$T_b = b * N * s$$

Number of tests due to symptomatic individuals infected with SARS-CoV-2 is calculated by assuming only a proportion of population infected with SARS-CoV-2 will present symptoms (s_1) and request testing (p_1).

$$T_{COV}(t) = s_1 * p_1 * N_1(t)$$

with N_1 being the incident number of people infectious with SARS-CoV-2.

$$N_1(t) = \int_{t-1}^t (\alpha_1 X_{ES}(t) + \lambda_{12} X_{IS}(t) + \alpha_1 X_{EI}(t) + \alpha_2 X_{IE}(t) + \alpha_1 X_{ER}(t) + \gamma_2 X_{I_2I_1}(t)) dt$$

Similar approach was taken when calculating number of tests due to symptomatic individuals infected with virus 2 assuming that only a proportion of population infected with virus-2 will present symptoms (s_2) and request testing (p_2) for COVID-19.

$$T_{V2}(t) = s_2 * p_2 * N_2(t)$$

where N_2 is the incident number of people infectious with virus-2, not including double infected individuals.

$$N_2(t) = \int_{t-1}^t (\alpha_2 X_{SE}(t) + \lambda_{21} X_{SI}(t) + \alpha_2 X_{RE}(t) + \gamma_1 X_{I_1 I_2}) dt$$

Double infected individuals are excluded from virus-2 count because ultimately, they will be counted towards positive COVID-19 cases and will not be excluded from the corrected total of daily tests when we conduct correction of the percent positive.

The number of symptomatic tests generated by contact tracing and testing around confirmed infected cases with SARS-CoV-2 on a day t , assuming a contact tracing delay d between a positive case and testing their contacts, is calculated as following:

$$T_{CONTACTS}(t - d) = s_1 * \tau * p_1 * N_1(t - d)$$

where τ represents number of contacts tested per one positive case, on average. We considered contacts of both symptomatic and asymptomatic confirmed index cases but only included symptomatic contacts in the total number of symptomatic tests. Among these symptomatic tests generated by contact tracing and testing around confirmed infected cases, the proportion of truly infected with SARS-CoV-2 is assumed to scale with the prevalence of SARS-CoV-2 in the population at the date of the test.

Prevalence of SARS-CoV-2 in the population $prev(t)$ at time t is the proportion of population infected with SARS-CoV-2 at time t , it can be estimated by:

$$prev(t) = \frac{(X_{IS}(t) + X_{IE}(t) + X_{I_1 I_2}(t) + X_{I_2 I_1}(t) + X_{R_1 R_2}(t))}{N}$$

Number of SARS-CoV-2 positive tests among symptomatic individuals T_+ on a given day t is calculated according to the following equation:

$$T_+(t) = (1 - m) * s_{pcr} * T_{COV}(t) + m * s_m * T_{COV}(t) + prev(t) * s_{pcr} * T_{CONTACTS}(t - d)$$

where m represents the proportion of multiplex PCR tests among total tests conducted on symptomatic individuals, s_{pcr} and s_m represent sensitivity of PCR SARS-CoV-2 test and PCR multiplex tests, respectively, with $prev$ representing prevalence of SARS-CoV-2 in the population on a given day t .

S2.2 Correction of the observed SARS-CoV-2 symptomatic percent positive

We proposed a corrected version of the symptomatic percent positive of SARS-CoV-2 based on the results of multiplex PCR testing:

The proportion of symptomatic virus-2 confirmed positive cases among all multiplex PCR tests (T_m) is given by:

$$prop_{V2+}(t) = \frac{T_{V2+}(t)}{T_m(t)}$$

where T_{V2} is the confirmed positive symptomatic virus 2 cases and T_m is the number of symptomatic multiplex PCR tests.

Total symptomatic daily tests T on a given day t are sum of tests conducted with PCR COVID-19 tests:

$$T(t) = T_{pcr}(t) + T_m(t)$$

where $T_{pcr}(t)$ represents the number of symptomatic PCR SARS-CoV-2 tests on day t :

$$T_{pcr}(t) = (1 - m) * T(t)$$

$T_m(t)$ is the total number of symptomatic multiplex tests on a given day t and is given by:

$$T_m(t) = m * T(t)$$

S2.3 Stochastic reporting of test results

The observed number of positive tests for SARS-CoV-2 (T_{COV}) and virus-2 (T_{V2+}) respectively, were modelled as follows:

$$T_{COV}(t) \sim \text{Binomial}(T_{pcr}(t), s_{pcr})$$

$$T_{V2+}(t) \sim \text{Binomial}(T_m(t), p(t) * s_m)$$

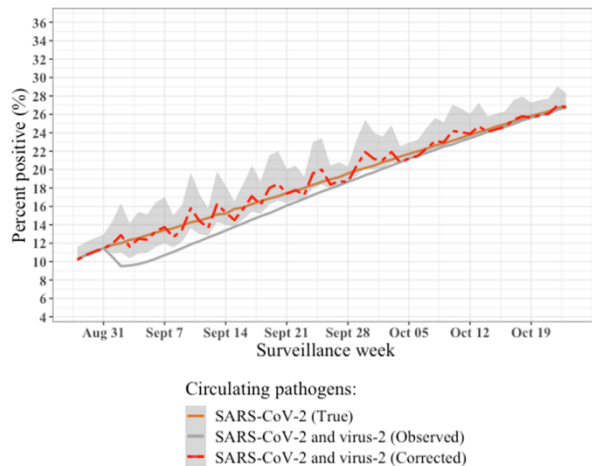
where s_{pcr} and s_m represent sensitivities of PCR and multiplex tests, respectively; T_{pcr} and T_m represent the number of symptomatic PCR SARS-CoV-2 tests on day t and the number of symptomatic multiplex PCR tests on day t , respectively; and $p(t)$ represents the true probability of being infected with virus-2 among tested symptomatic individuals:

$$p(t) = \frac{T_{V2}(t)}{(T_b + T_{COV}(t) + T_{V2}(t))}$$

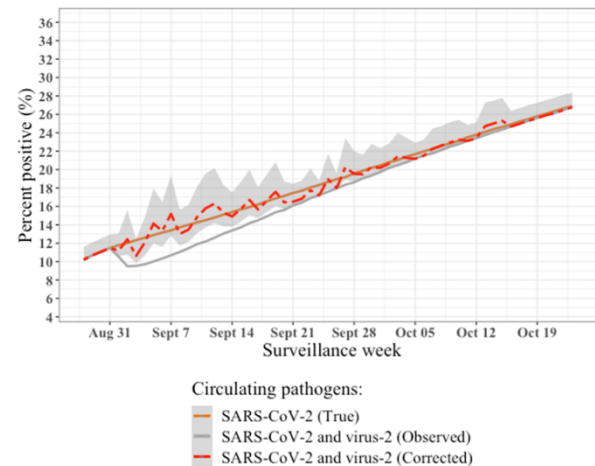
S2.4 Sensitivity analyses

S2.4.1. Impact of sensitivity of multiplex PCR tests (s_m) on the correction of the observed SARS-CoV-2 percent positive

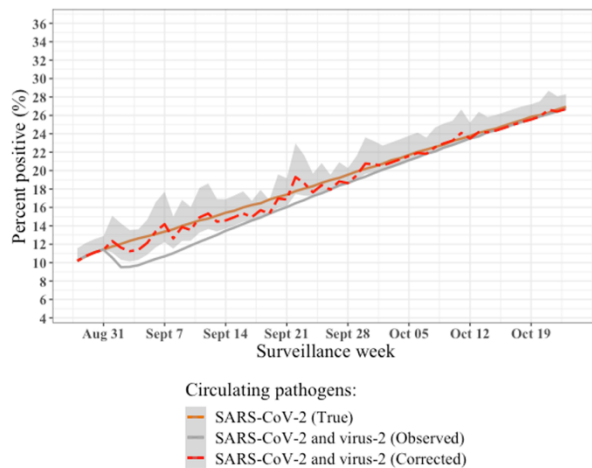
a) $s_m = 0.95$



b) $s_m = 0.90$



c) $s_m = 0.80$



d) $s_m = 0.60$

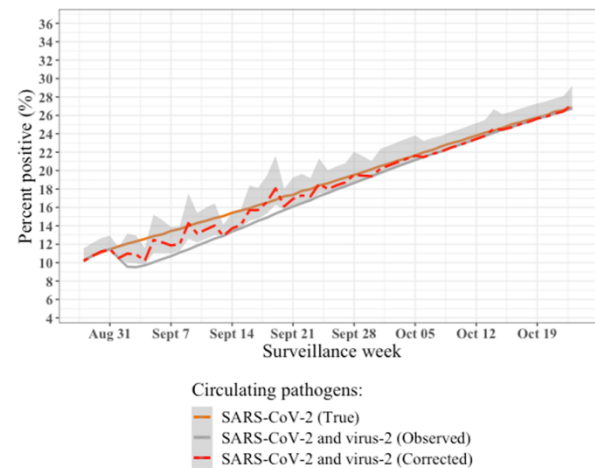


Figure S1. Impact of multiplex PCR test sensitivity (s_m) on the correction of the observed SARS-CoV-2 percent positive. Correction of the observed percent positive for SARS-CoV-2 (red dashed line, grey areas represent 95% confidence intervals) depends on the sensitivity of the multiplex PCR assays (s_m). Figure shows simulation results with a) 0.95, b) 0.90, c) 0.80, and d) 0.60 values of s_m . $s_m = 0.95$ will provide a correction that closely follows real percent positive, while tests with lower s_m provide a correction that is more distant than the real percent positive. For all simulations, we fixed the sensitivity of PCR SARS-CoV-2 test to $s_{pcr} = 0.95$ and the proportion of multiplex PCR tests carried out to $m = 0.001$.

S2.4.2 Impact of the proportion of multiplex PCR tests used (m) among all symptomatic tests on the correction of the observed SARS-CoV-2 percent positive

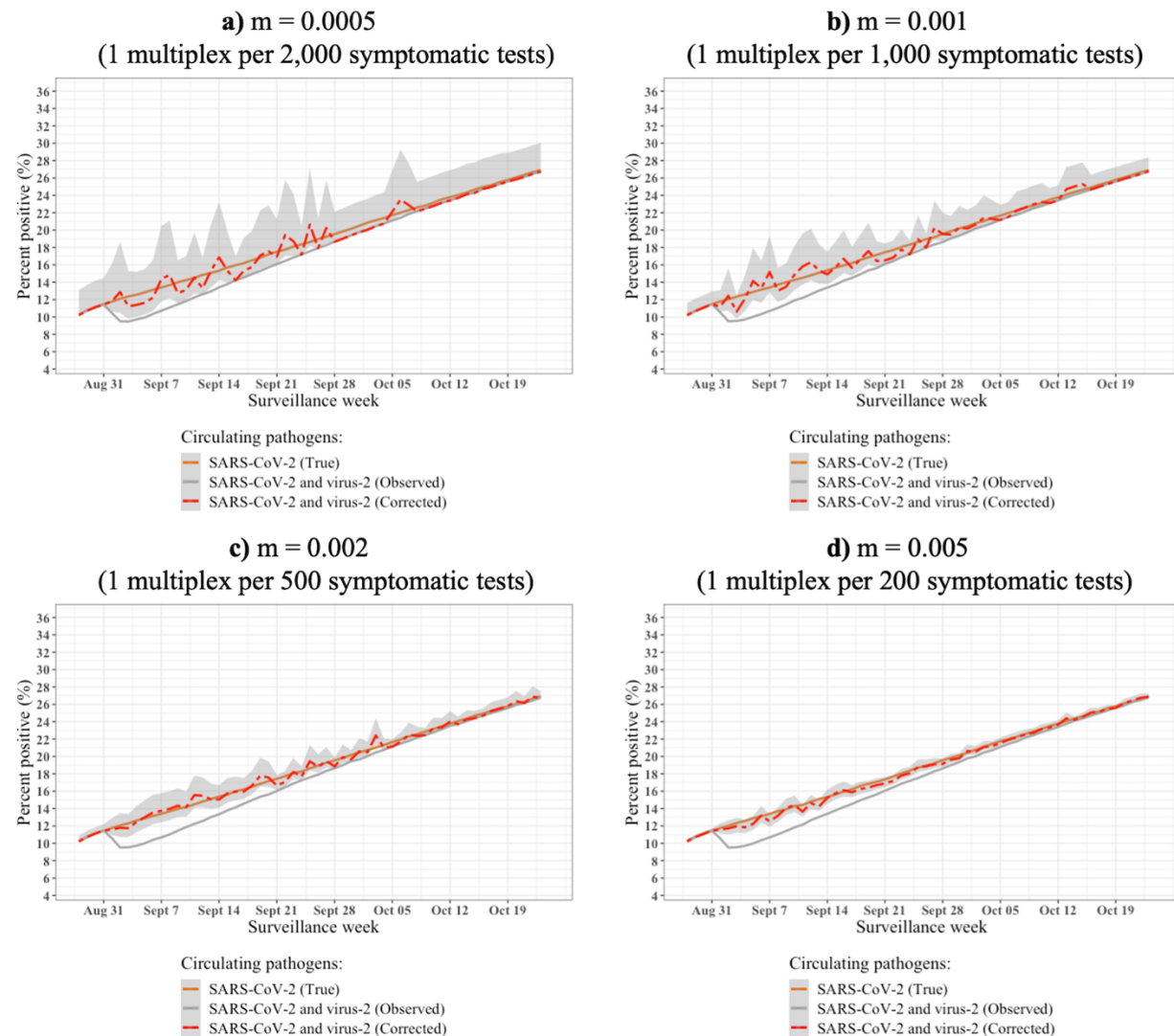
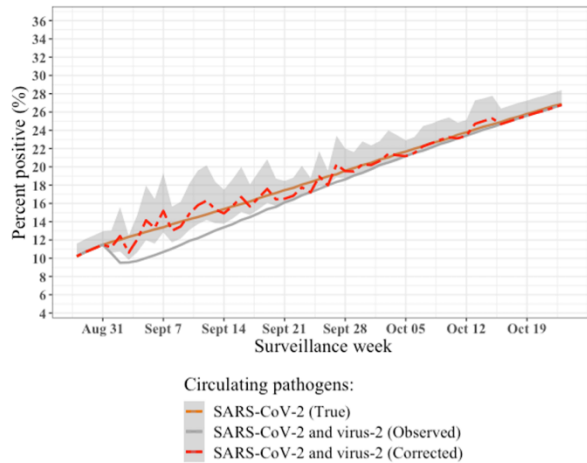


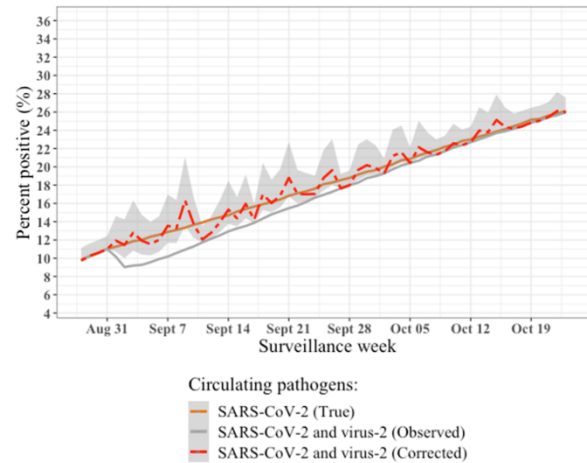
Figure S2. Impact of a range of proportions of multiplex PCR tests used (m) among all symptomatic tests on the correction of the observed symptomatic SARS-CoV-2 percent positive with. Quality of the correction of the observed SARS-CoV-2 percent positive (red dashed line, grey areas represent 95% confidence intervals) depends on the number (i.e., proportion) of multiplex PCR tests used (m) on symptomatic individuals. Figure shows simulations with a) 0.005, b) 0.001, c) 0.002, and d) 0.005 values of m . Greater values of m provide better quality of the correction of the observed SARS-CoV-2 percent positive. For all simulations, we fixed the sensitivity of PCR SARS-CoV-2 test to $s_{\text{per}} = 0.95$ and the sensitivity of multiplex PCR test to $s_m = 0.90$.

S2.4.3 Impact of sensitivity of SARS-CoV-2 PCR tests (s_{pcr}) on the correction of the observed SARS-CoV-2 percent positive

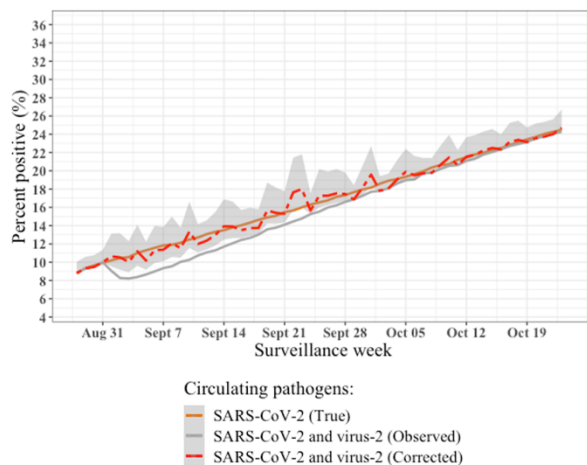
a) $s_{pcr} = 0.95$



b) $s_{pcr} = 0.90$



c) $s_{pcr} = 0.80$



d) $s_{pcr} = 0.60$

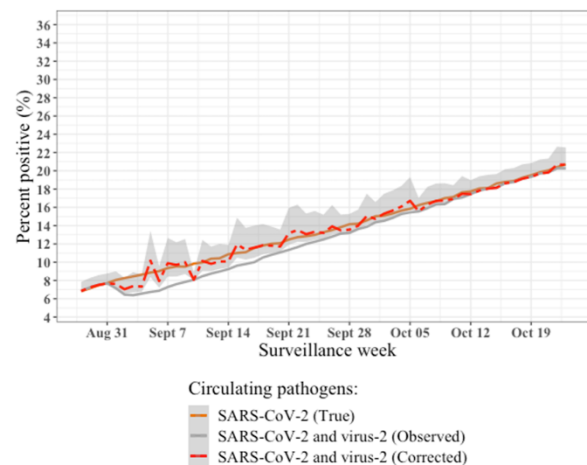


Figure S3. Impact of SARS-CoV-2 PCR test sensitivity (s_{pcr}) on the correction of the observed SARS-CoV-2 percent positive. Correction of the observed percent positive for SARS-CoV-2 (red dashed line, grey areas represent 95% confidence intervals) does not depend on the sensitivity of the SARS-CoV-2 PCR assays (s_{pcr}). Figure shows simulation results with a) 0.95, b) 0.90, c) 0.80, and d) 0.60 values of s_{pcr} . Successful detection of positive SARS-CoV-2 cases and overall observed percent positivity depends on s_{pcr} . However, the correction quality is not affected by this parameter. For all simulations, we fixed the sensitivity of multiplex PCR test to $s_m = 0.90$ and the proportion of multiplex PCR tests carried out to $m = 0.001$.

S2.4.4 Impact of the proportion of individuals infected with virus-2 that is symptomatic at the time of testing (s_2) on the correction of the observed SARS-CoV-2 percent positive

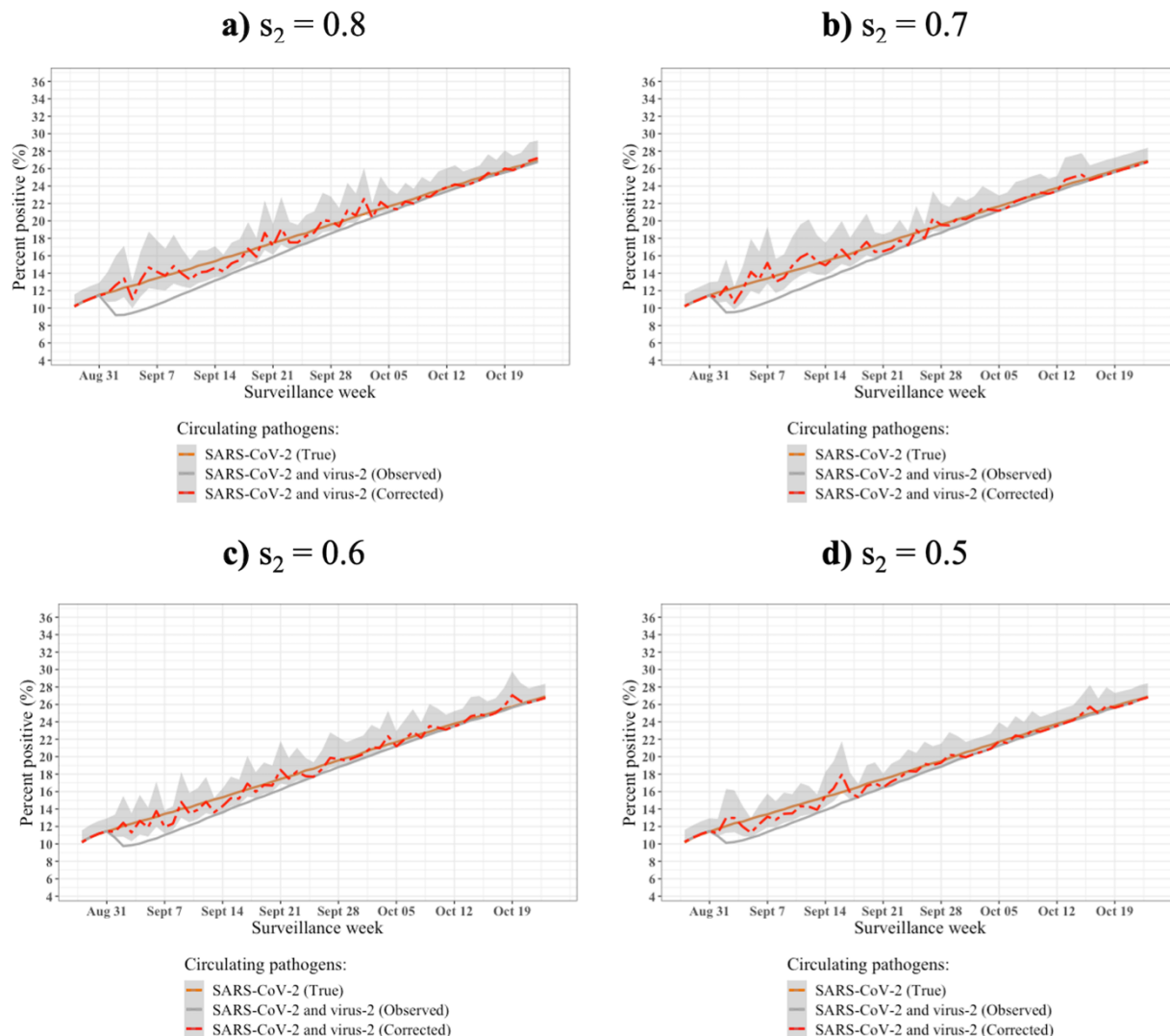


Figure S4. Impact of a range of proportion values for individuals infected with virus-2 that are symptomatic at the time of testing (s_2) on the correction of the observed SARS-CoV-2 percent positive. Correction of the observed percent positive for SARS-CoV-2 (red dashed line, grey areas represent 95% confidence intervals) does not depend on the proportion of infected with virus-2 that is symptomatic at the time of testing (s_2). Therefore, the correction quality is not affected by this parameter. However, the gap between the true and observed percent positive decreases with the decreasing proportion of infected with virus-2 that is symptomatic due to the fact that less symptomatic individuals infected with virus-2 request SARS-CoV-2 test. Figure shows simulations results with a) 0.8, b) 0.7, c) 0.6, and d) 0.5 values of s_2 . For all simulations, we fixed the sensitivity of PCR SARS-CoV-2 test to $s_{pcr} = 0.95$, sensitivity of multiplex PCR test to $s_m = 0.90$, and the proportion of multiplex PCR tests carried out to $m = 0.001$.

S2.4.5 Impact of virus-2 R_0 on the correction of the observed SARS-CoV-2 percent positive

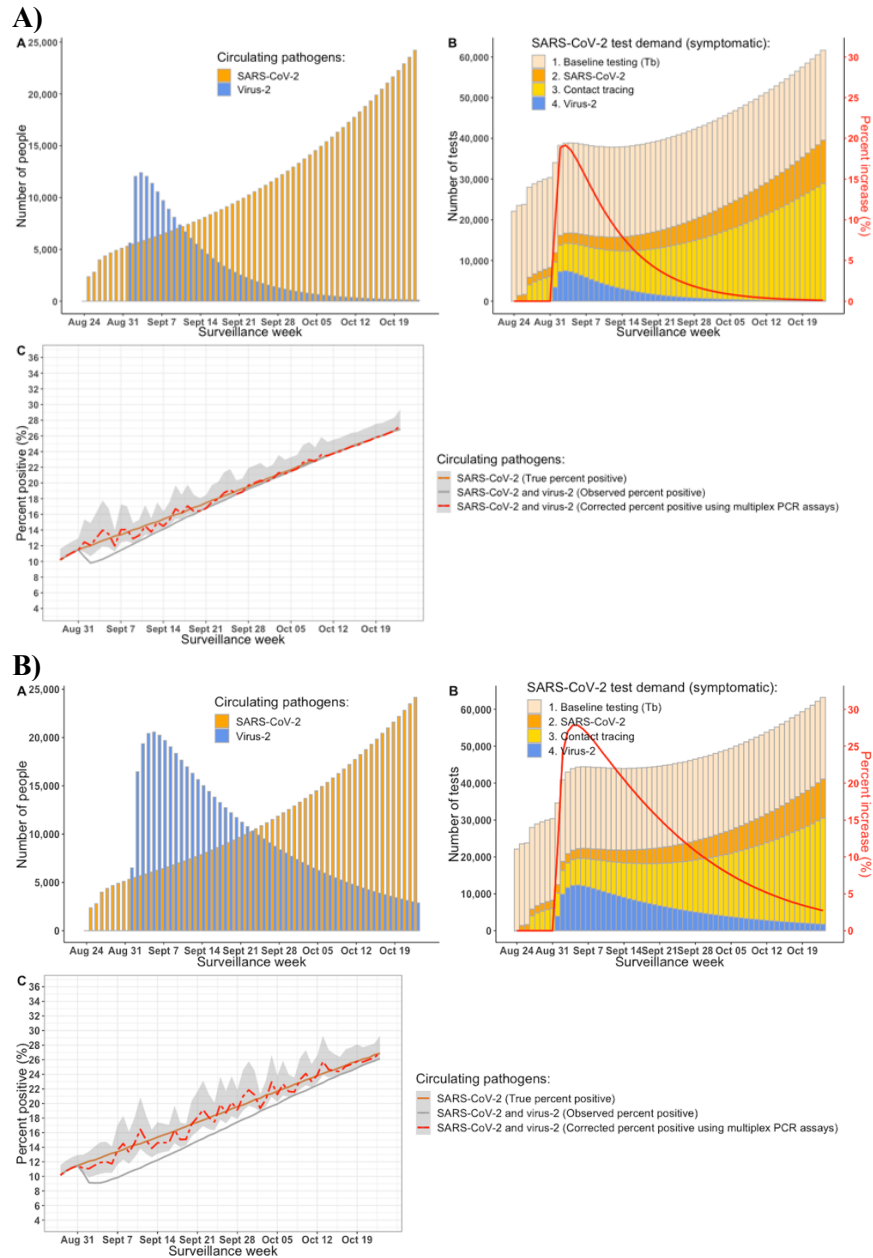


Figure S5. The impact of varying R_0 of virus-2. Correction of the observed percent positive for SARS-CoV-2 (red dashed line, grey areas represent 95% confidence intervals) does not depend on R_0 of virus-2 and the correction quality is not affected by this parameter. However, the gap between the true and observed percent positive increases with the increasing value of R_0 and vice versa. Percent increase in SARS-CoV-2 testing demand (solid red line) is affected in the similar manner. Figure shows simulation results with R_0 values of **A) 1.4**: The observed SARS-CoV-2 percent positive among symptomatic tests underestimated the true percent positive by up to 2.4% (19% relative decrease). Daily SARS-CoV-2 testing demand increased up to 19.2%; and **B) 2.5**: The observed SARS-CoV-2 percent positive among symptomatic underestimated the true percent positive by up to 3.6% (27.8% relative decrease). Daily SARS-CoV-2 testing demand increased up to 27.9%.

S2.4.6 Impact of the initial proportion of the population immune to SARS-CoV-2 on the correction of the observed SARS-CoV-2 percent positive

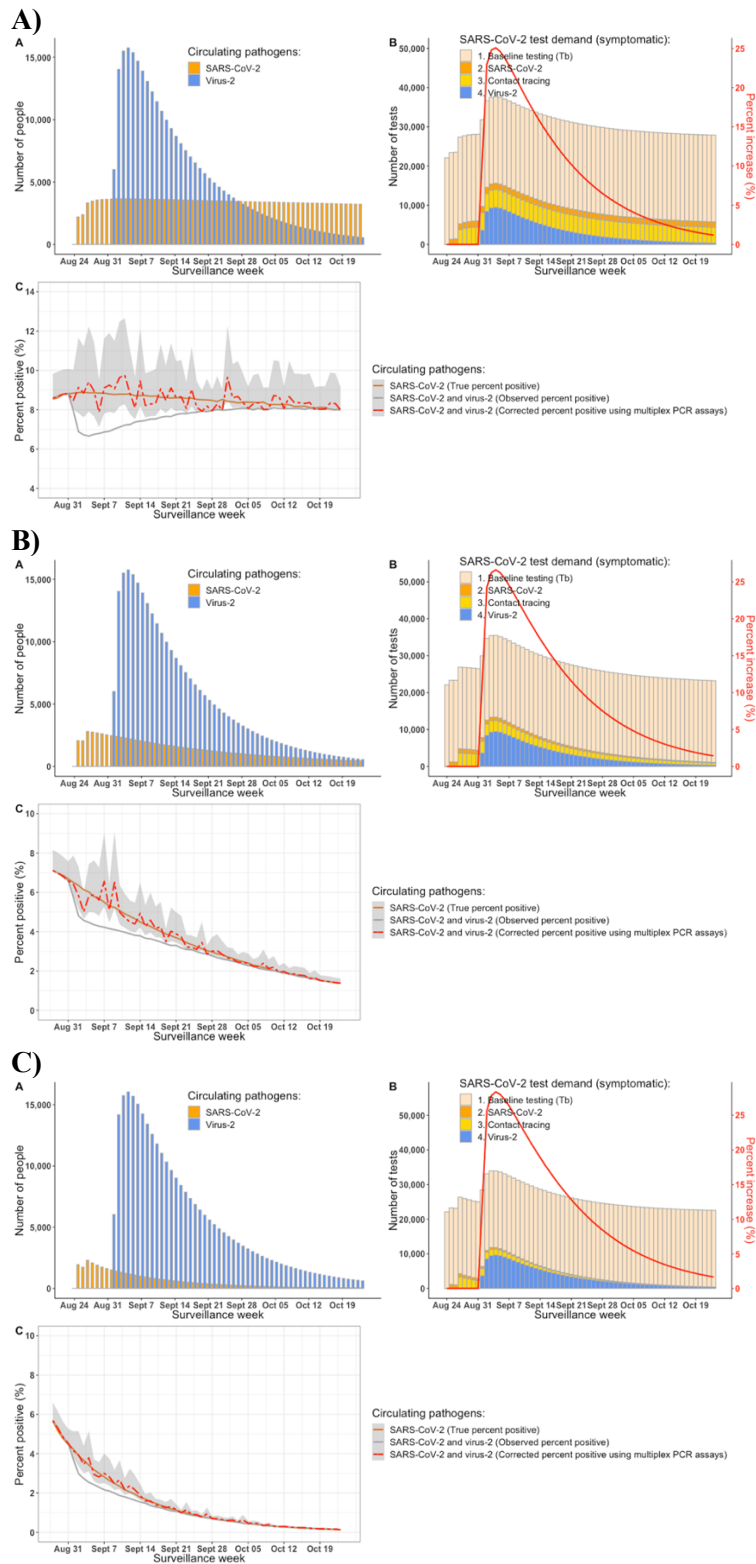


Figure S6. Impact of the initial proportion of the population immune to SARS-CoV-2. Correction of the observed percent positive for SARS-CoV-2 (red dashed line, grey areas represent 95% confidence intervals) does not depend on the initial proportion of the population immune to SARS-CoV-2. The correction quality is not affected by this parameter. However, the gap between the true and observed percent positive decreases with the increasing initial proportion of the population immune to SARS-CoV-2. On the other hand, percent increase in SARS-CoV-2 testing demand (solid red line) experiences slight increase with the increasing initial proportion of the population immune to SARS-CoV-2. Figure shows simulation results with increasing proportion of the population being immune to SARS-CoV-2: **A) 30%** immune to SARS-CoV-2 ($X_{RS} = 0.06$; $X_{SR} = 0.46$; $X_{RR} = 0.24$): The observed SARS-CoV-2 percent positive among symptomatic tests underestimated the true percent positive by up to 2.2% (24.9% relative decrease). Daily SARS-CoV-2 testing demand increased up to 25.1%. **B) 50%** immune to SARS-CoV-2 ($X_{RS} = 0.06$; $X_{SR} = 0.26$; $X_{RR} = 0.44$): The observed SARS-CoV-2 percent positive among symptomatic tests underestimated the true percent positive by up to 1.55% (25.8% relative decrease). Daily SARS-CoV-2 testing demand increased up to 26.6%. **C) 70%** immune to SARS-CoV-2 ($X_{RS} = 0.06$; $X_{SR} = 0.06$; $X_{RR} = 0.64$): The observed SARS-CoV-2 percent positive among symptomatic tests underestimated the true percent positive by up to 0.93% (25.5% relative decrease). Daily SARS-CoV-2 testing demand increased up to 28.4%.

S2.4.7 Impact of the initial proportion of the population immune to SARS-CoV-2 and to virus-2 on the correction of the observed SARS-CoV-2 percent positive

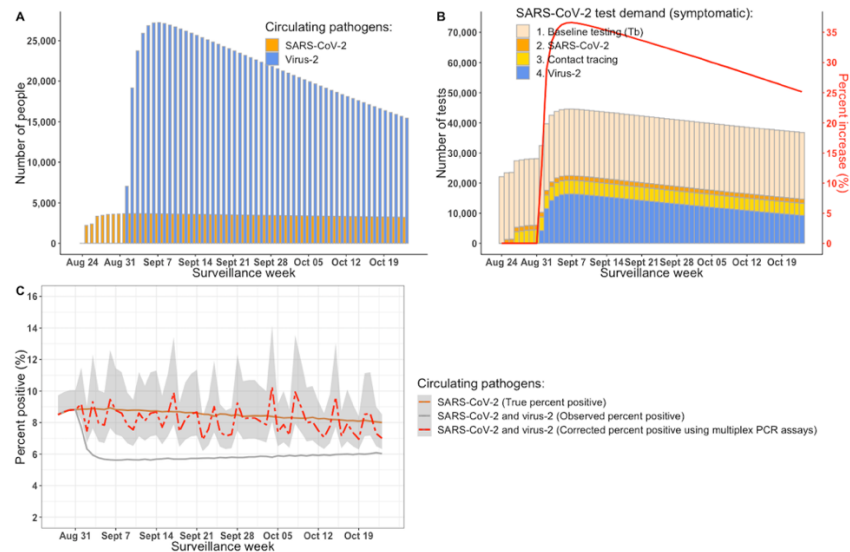


Figure S7. Impact of the initial proportion of the population immune to SARS-CoV-2 and to virus-2. Correction of the observed percent positive for SARS-CoV-2 (red dashed line, grey areas represent 95% confidence intervals) does not depend on the initial proportion of the population immune to SARS-CoV-2. The correction quality is not affected by this parameter. However, both the gap between the true and observed percent positive and percent increase in SARS-CoV-2 testing demand (solid red line), increase with the increasing initial proportion of the population immune to SARS-CoV-2 and decreasing initial proportion of the population immune to virus-2. Figure shows simulation results with 30% and 50% of the population being immune to SARS-CoV-2 and virus-2, respectively ($X_{RS} = 0.26$; $X_{SR} = 0.46$; $X_{RR} = 0.04$). The observed SARS-CoV-2 percent positive among symptomatic tests underestimated the true percent positive by up to 3.3% (36.9% relative decrease). Daily SARS-CoV-2 testing demand increased up to 36.6%.

S2.5 Rhinovirus circulation in France

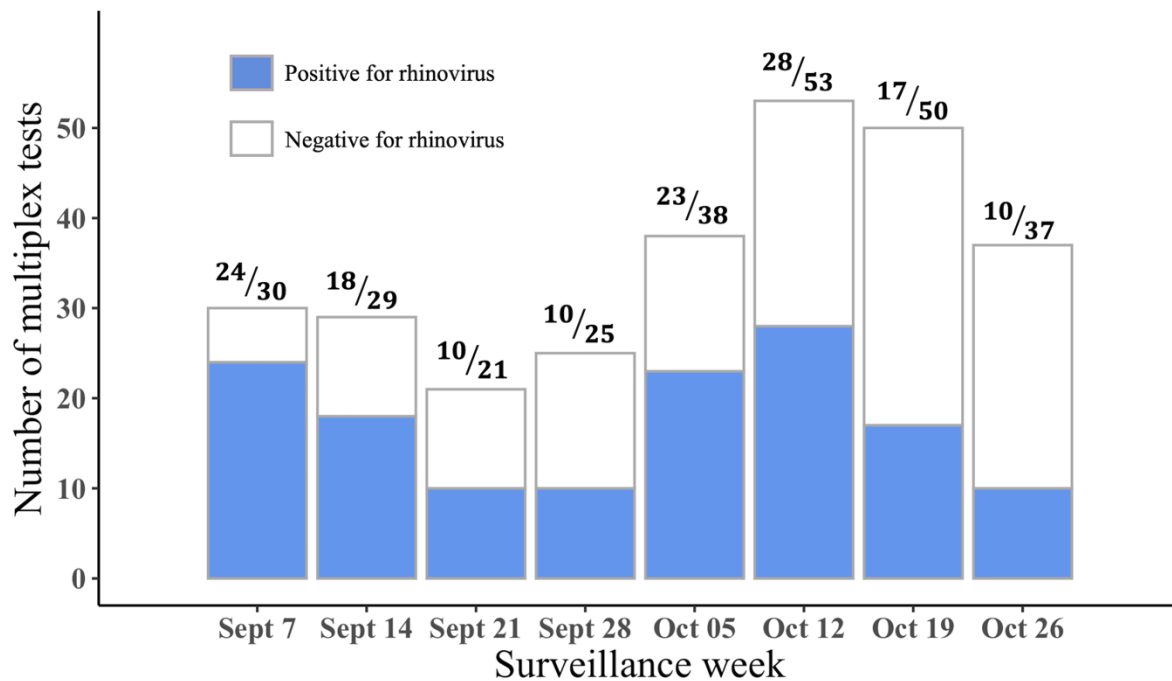


Figure S8. Detection of rhinovirus circulation in France from Sept 7 to Oct 26, 2020. Data are from Ref. [11]. Blue shaded part of the column represents number of multiplex tests positive for rhinovirus (numerator value) out of total number of multiplex tests (denominator value) conducted per week. French Sentinelles physicians (general practitioners and pediatricians) conducted nasopharyngeal swabs among acute respiratory infection (ARI) cases seen in the consultation to test for the various respiratory viruses. This surveillance indicates active circulation of the virus over the study period.

References

1. Ministry of Health, France. COVID-19 epidemic monitoring indicators. Available at: <https://www.data.gouv.fr/en/datasets/indicateurs-de-suivi-de-lepidemie-de-covid-19/>. Accessed 15 December 2020.
2. Spencer JA, Shutt DP, Moser SK, et al. Epidemiological parameter review and comparative dynamics of influenza, respiratory syncytial virus, rhinovirus, human coronavirus, and adenovirus. medRxiv **2020**; 2020.02.04.20020404. Available at: <https://www.medrxiv.org/content/10.1101/2020.02.04.20020404v2>.
3. He X, Lau EHY, Wu P, et al. Temporal dynamics in viral shedding and transmissibility of COVID-19. Nat Med **2020**; 26:672–675. Available at: <https://doi.org/10.1038/s41591-020-0869-5>.
4. Wang X, Pasco RF, Du Z, et al. Impact of social distancing measures on COVID-19 healthcare demand in Central Texas, USA. Emerg Infect Dis. 2020; 26(10):2361-2369. Available at: <https://doi.org/10.3201/eid2510.201702>.
5. Public Health France. COVID-19: epidemiological update of 04 February 2021. Available at: <https://www.santepubliquefrance.fr/maladies-et-traumatismes/maladies-et-infections-respiratoires/infection-a-coronavirus/documents/bulletin-national/covid-19-point-epidemiologique-du-4-fevrier-2021>.
6. Public Health France. SI-DEP. Number of COVID-19 tests. Accessed: 04 March 2021.
7. Dinnes J, Deeks JJ, Adriano A, Berhane S, et al. Rapid, point-of-care antigen and molecular-based tests for diagnosis of SARS-CoV-2 infection (Review). Cochrane Database of Systematic Reviews **2020**. Available at: <https://doi.org/10.1002/14651858.cd013705>.
8. bioMérieux. BIOFIRE FILMARRAY Respiratory 2.1 plus Panel. Available at: [biomerieux-diagnostics.com/filmarrayr-respiratory-panel](https://www.biomerieux-diagnostics.com/filmarrayr-respiratory-panel)
9. Nowak MD, Sordillo EM, Gitman MR, Paniz Mondolfi AE. Coinfection in SARS-CoV-2 infected patients: Where are influenza virus and rhinovirus/enterovirus? J Med Virol **2020**; 92:1699–1700. Available at: <https://doi.org/10.1002/jmv.25953>.
10. Hozé N, Paireau J, Lapidus N, et al. Monitoring the proportion infected by SARS-CoV-2 from age-stratified hospitalisation and serological data. medRxiv **2021**. Available at: <https://doi.org/10.1101/2021.01.11.21249435>.
11. Sentinels Network, INSERM, Sorbonne University. [Sentinelles weekly report, 21 February 2021](#). Available at: <https://www.sentiweb.fr/document.php?doc=5211>.