

1 **Ten months of temporal variation in the clinical journey of hospitalised patients with**
2 **COVID-19: an observational cohort**

3

4 **ISARIC Clinical Characterisation Group**

5

6 **Corresponding author:** Matthew Hall (matthew.hall@bdi.ox.ac.uk)

7

8 **Abstract**

9

10 **Background:** There is potentially considerable variation in the nature and duration of the
11 care provided to hospitalised patients during an ongoing infectious disease epidemic or
12 pandemic. Improvements in care and clinician confidence may shorten the time spent as an
13 inpatient, or the need for admission to an intensive care unit (ICU) or high density unit
14 (HDU), while novel treatment modalities may reduce the time course of illness. On the other
15 hand, limited resources at times of high demand may lead to rationing of resources, with
16 less beneficial consequences. Despite little evidence on how the values of such variables
17 change over the course of a crisis (such as the current COVID-19 pandemic), they may
18 nevertheless be used as proxies for disease severity, outcome measures for clinical trials,
19 and to inform planning and logistics. We hypothesise that variation of this kind has been
20 present over the first year of the pandemic.

21 **Methods and Findings:** We investigate such time trends in an extremely large international
22 cohort of 142,540 patients with symptom onset of, or hospital admission for, COVID-19
23 during 2020. The variables investigated are time from symptom onset to hospital admission,
24 probability of ICU/HDU admission, time from hospital admission to ICU/HDU admission,

25 **NOTE:** This preprint reports new research that has not been certified by peer review and should not be used to guide clinical practice. case fatality ratio (CFR) and total length of hospital stay. Time from hospital symptom onset

26 to hospital admission showed a rapid decline during the first months of the pandemic
27 followed by peaks during August/September and December. ICU/HDU admission was more
28 frequent from June to August, while there were only modest time trends in time from
29 hospital admission to ICU/HDU. The CFR was lowest from June to August, a trend mostly
30 driven by patients with no ICU/HDU admission. Raw numbers for overall hospital stay
31 showed little overall variation over the time period, but further examination reveals a clear
32 decline in time to discharge for ICU/HDU survivors. The main limitations are that these are
33 predominantly severe COVID-19 cases, and that there are temporal, spatial and
34 demographic biases present in an observational study of this kind.

35 **Conclusions:** Our results establish that variables of these kinds have limitations when used
36 as outcome measures in a rapidly-evolving situation.

37
38

39 Introduction

40
41

42 During an epidemic or pandemic of a novel infectious disease, variations in the duration of
43 each stage of a hospitalised patient's progress from symptom onset, to hospital admission,
44 and hence to outcome are critical for an effective response. Clinicians use these data as a
45 proxy for disease severity, and to provide prognostic information to patients and their
46 families. Policy makers use these data to inform system wide planning for staffing,
47 infrastructure, to predict requirements for consumables (such as personal protective
48 equipment), and to assess performance of the hospital system. And for clinical research,
49 these measures are used as trial outcomes to determine the efficacy of novel treatments.
50
51 Often, the extent to which patient journeys vary during an epidemic is not understood.

52 There are changes in clinical practice (World Health Organisation 2021) - clinical

53 understanding of the natural history of diseases improves with time (Docherty et al. 2021),
54 and so too, confidence in safe discharge criteria or alternative models of care (Rojek and
55 Horby 2016), such as remote monitoring (Nunan et al. 2020; Bell et al. 2021). Moreover, the
56 introduction of effective treatments (Rochwerg et al. 2020) and standardisation of care may
57 rapidly reduce the severity or time course of illness (Dennis et al. 2021). However, decisions
58 about whether to admit or escalate care are also dependent on logistic factors such as the
59 availability of resources (e.g. ventilators, intensive care beds, staff) that may be rationed
60 during the peak of a pandemic, but abundant at other phases of an outbreak (Tyrrell et al.
61 2021; National Institute for Health and Care Excellence 2021; Pagel, Utley, and Ray 2020).
62 There may also be changes in policy to admit patients for indications that are not clinical –
63 such as to facilitate effective quarantine (CMO Messaging 2021) or supervise provision of
64 treatments in clinical trials. We hypothesise that there is significant variation in the patient
65 journey over a pandemic period, and that this variability may limit the way these data can
66 be responsibly used.

67

68 In this paper, we assess temporal changes in hospital admission, length of stay, and
69 escalation of care for hospitalized patients with SARS-CoV-2 infection included in the
70 International Severe Acute Respiratory and emerging Infection Consortium (ISARIC) WHO
71 Clinical Characterisation Protocol International cohort (ISARIC Clinical Characterisation
72 Group 2020). This is to our knowledge the largest, prospective international cohort including
73 standardised clinical data, and, as of the time of writing, includes data collected from 26
74 January 2020 to 7 April 2021 on 483,929 people hospitalised with COVID-19 in 1,609 sites in
75 54 countries.

76

77 We use this dataset to determine whether these variables did indeed change over the
78 course of the SARS-CoV-2 pandemic during 2020, and where there are changes, explore if
79 there are predictable influences that account for this.

80

81 **Methods**

82

83 As previously described (ISARIC Clinical Characterisation Group, Pritchard, and Olliaro 2020),
84 eligible for recruitment were patients with confirmed or suspected COVID-19 infection
85 admitted to an ISARIC partner site and submitted to the ISARIC-hosted REDCap system.
86 Additional data contributed to ISARIC via other mechanisms have not been included due to
87 differences in data structure. The datasets used in analyses in this paper are drawn from a
88 population of all patients with a symptom onset date, or hospital admission date, recorded
89 between March and December 2020 inclusive. Where patients had a recorded hospital
90 admission date before their symptom onset date, this was taken to be a nosocomial
91 infection. The commencement of any patient's hospital treatment for COVID-19, hereafter
92 "COVID-19 admission date", was taken to be the later of the symptom onset date and
93 hospital admission date.

94

95 We used the complete dataset described above to explore temporal variation in six
96 variables or collections of variables. Not all patients had recorded information for the
97 variables of interest in each question, so, in each case, a subset was analysed. The questions
98 and data subsets were as follows:

99 **Question 1:** Variation in the time from symptom onset to hospital admission. Patients were
100 excluded if this variable was not available, or if they had nosocomial infection.

101 **Question 2:** Variation in the proportion of patients being admitted to an ICU or HDU.

102 Patients were excluded if this variable was not available.

103 **Question 3:** Variation in the time from COVID-19 admission to ICU/HDU admission. Patients

104 were excluded if they were never admitted to an ICU or HDU, or if this variable was

105 otherwise not available.

106 **Question 4:** Variation in the overall case fatality rate. Patients were excluded if the final

107 outcome of their hospital stay was either not recorded or recorded as something other than

108 “death” or “discharge” (for example, transfer to another facility).

109 **Question 5:** Variation in the time from COVID-19 admission to death or discharge. (We

110 describe either as an “outcome”.) Exclusions were as in question 4, as well as patients who

111 had a recorded outcome but no recorded outcome date.

112 **Question 6:** Variation in the status of patients (admitted, ICU/HDU admitted, dead,

113 discharged, or unknown outcome) on a given day after admission. Excluded here were

114 patients whose ICU/HDU status on the day of admission was unknown.

115

116 Further filtering was done to a) remove any nonsensical values (such as recorded time of

117 hospital admission after hospital exit), b) remove patients admitted to hospital in 2021 for

118 all questions except 1 (such patients were included when exploring the latter due to right

119 censoring concerns if they were omitted), and c) where a time period was the variable of

120 interest (questions 1, 3, 5 and 6), remove patients with the top 2.5% of values of those

121 variables (as this range included outliers that may have been the result of incorrect data

122 entry).

123

124 For all analyses with a single outcome variable, we plotted its mean value against the

125 epidemiological week of symptom onset (question 1) or COVID-19 admission (others), both
126 overall and with respect to various variables of interest (e.g. age group).

127

128 For the exploration of patient status by day after COVID-19 admission (question 6), the
129 progress of a patient across the course of their hospital stay was visualised by means of
130 Sankey diagrams. Five states were considered: ward occupancy, ICU/HDU occupancy, the
131 final outcomes of death or discharge, and unknown outcome. We recorded the state of each
132 patient on the day of admission, on every subsequent day, and their final outcome. Where a
133 patient's exact location (ward or ICU/HDU) in the hospital was not recorded on a given day,
134 their last known location was used. For the figures in this article we present only the data on
135 day of COVID-19 admission (A), three days later (A+3), seven days later (A+7) and final
136 outcome (O+1). We have also developed an interactive version which we hope to make
137 available to the research community as soon as possible.

138

139 We used two special categories of symptoms at admission: "common" symptoms (cough,
140 fatigue, fever, and shortness of breath) and gastrointestinal symptoms (abdominal pain,
141 diarrhoea, and vomiting). We introduced variables to the dataset counting the number of
142 each of these categories present for each patient. Missing data was disregarded here, so
143 these represent lower bounds.

144

145 **Statistical analysis**

146

147 Multivariable linear regression was used to investigate factors associated with time from
148 onset of symptoms to hospital admission (question 1), time from COVID-19 admission to

149 ICU/HDU admission (question 3), and time from COVID-19 admission to death or discharge
150 (question 5). In all cases the dependent variable was log-transformed and a pseudocount of
151 1 added in order to prevent taking logarithms of zero. Multivariable logistic regression was
152 used to investigate factors associated with ICU/HDU admission (question 2) and fatal
153 outcome (question 5). (For a full list of variables used, see supplementary text S1.) For all
154 regression analyses we analysed the presence of comorbidities as covariables. As there was
155 a considerable amount of missing data for each of these, we introduced an “unknown” class
156 to the regression models for these variables rather than exclude patients without values for
157 them entirely. After this modification, every regression analysis was performed as a
158 complete case analysis.

159

160 The statistical significance of the variables for month of admission or onset, for age, and for
161 the inclusion of interaction terms used in the regressions for CFR (question 4) and time to
162 outcome (question 5), was assessed using Wald tests.

163

164 **Software**

165

166 All analyses were performed in R 4.0.3 (R Core Team 2013), with packages including the
167 *tidyverse* (Wickham et al. 2019), and *ggalluvial* (Brunson 2020).

168

169 **Results**

170

171 **Patient characteristics**

172 Our complete dataset consisted of 142,540 patients (60,977 female, 81,325 male, 238

173 unknown sex), median age 70 [IQR 56-82]), admitted at 620 sites in 47 countries. Table 1
 174 shows a summary of baseline characteristics, and more detail, including country of origin
 175 and cross tabulation by month of admission, can be found in table S1. Table 2 shows the
 176 prevalence of symptoms at admission and comorbidities. 1030 individuals (0.7%) were
 177 pregnant women. (For more details, see supplementary table S1.)

Variable	Value	Number of patients	Percent
Total		142540	100
Date of COVID-19 admission (month of 2020, or 2021)	March	27108	19
	April	42267	29.7
	May	12311	8.64
	June	5342	3.75
	July	2811	1.97
	August	2218	1.56
	September	5265	3.69
	October	13822	9.7
	November	15155	10.6
	December	13205	9.26
	2021*	3036	2.13
Sex	Female	60977	42.8
	Male	81325	57.1
	Unknown	238	0.167
Age group	0-19	2730	1.92
	20-39	9546	6.7
	40-59	31368	22
	60-69	23431	16.4
	70-79	30541	21.4
	80+	42092	29.5
	Unknown	2832	1.99
Nosocomial infection	No	121910	85.5
	Yes	11695	8.2
	Unknown	8935	6.27

178
 179 **Table 1:** Baseline characteristics of the included patients. *Some patients admitted in early
 180 2021 are included in order to fully represent patients with symptom onset in December
 181 2020.

182

	Name	% present	<i>n</i> present/ <i>n</i> data recorded
Symptoms at admission	Cough (C)	66.8	89438/133809
	Shortness of breath (C)	64.8	92129/142275
	Fever (C)	63.4	86494/136344
	Fatigue (C)	44.9	54263/120816
	Confusion	24.7	31604/127817
	Vomiting (G)	19.9	25135/126299
	Myalgia	18.9	21482/113862
	Diarrhoea (G)	18.2	22953/125804
	Headache	12	13754/114530
	Abdominal pain (G)	11	13500/122785
	Ageusia	9	7103/78674
	Wheezing	7.6	9011/118028
	Anosmia	6.9	5550/80040
	Runny nose	3.4	3745/110937
	Ulcers	2.1	2306/107859
	Bleeding	1.7	2123/121852
	Rash	1.5	1744/116123
Seizures	1.5	1821/123380	
Lymphadenopathy	0.7	783/114739	
Conjunctivitis	0.5	564/115518	
Ear pain	0.5	489/97145	
Number of recorded “common” symptoms (C)	0	7.6	10836/142540
	1	20.5	29257/142540
	2	26.4	37681/142540
	3	29	41359/142540
	4	16.4	23407/142540
Number of recorded gastrointestinal symptoms (G)	0	69.3	98714/142540
	1	20.3	28874/142540
	2	8.5	12142/142540
	3	2	2810/142540
Comorbidities	Hypertension	47.5	51415/108319
	Chronic cardiac disease	29.5	38747/131247
	Diabetes	16.8	20417/121817
	Chronic pulmonary disease	16.4	22434/136569
	Chronic kidney disease	15.6	21199/136148
	Obesity	14.5	17114/118025
	Asthma	13.3	18147/136243
	Dementia	12.7	16538/130084
	Smoking	12.7	7401/58331
	Chronic neurological disorder	11.4	15447/135673
	Rheumatological disorder	11.2	14118/126277
	Malignant neoplasm	9.3	12548/135418
	Chronic haematologic disease	4.1	5199/126563
	Liver disease	3.4	4515/131580
	Malnutrition	2.6	3125/122243
HIV/AIDS	0.4	525/122021	

183

184 **Table 2:** Prevalence of symptoms at hospital admission and comorbidities. The final column
185 gives the number of times the condition is recorded as present over the number of times its
186 presence or absence is recorded (i.e. the data is non-missing). Designated “common”
187 symptoms are indicated with a (C) and gastrointestinal symptoms with a (G); the number
188 and percentages of patients presenting with combinations of these are separately
189 presented.

190

191 **Time from symptom onset to hospital admission (question 1)**

192

193

194 After excluding individuals with apparent nosocomial infection, we analysed length of illness
195 before hospitalisation amongst those patients for whom this information was recorded ($n =$
196 118,980, 83.5%). The median time from symptom onset to admission was 5 days (IQR 1-8).

197 This variable showed a marked decline during March, from a median of 9 days (IQR 5-14) for
198 patients with onset in the week beginning March 1 to 3 (IQR 0-7) in that beginning April 5.

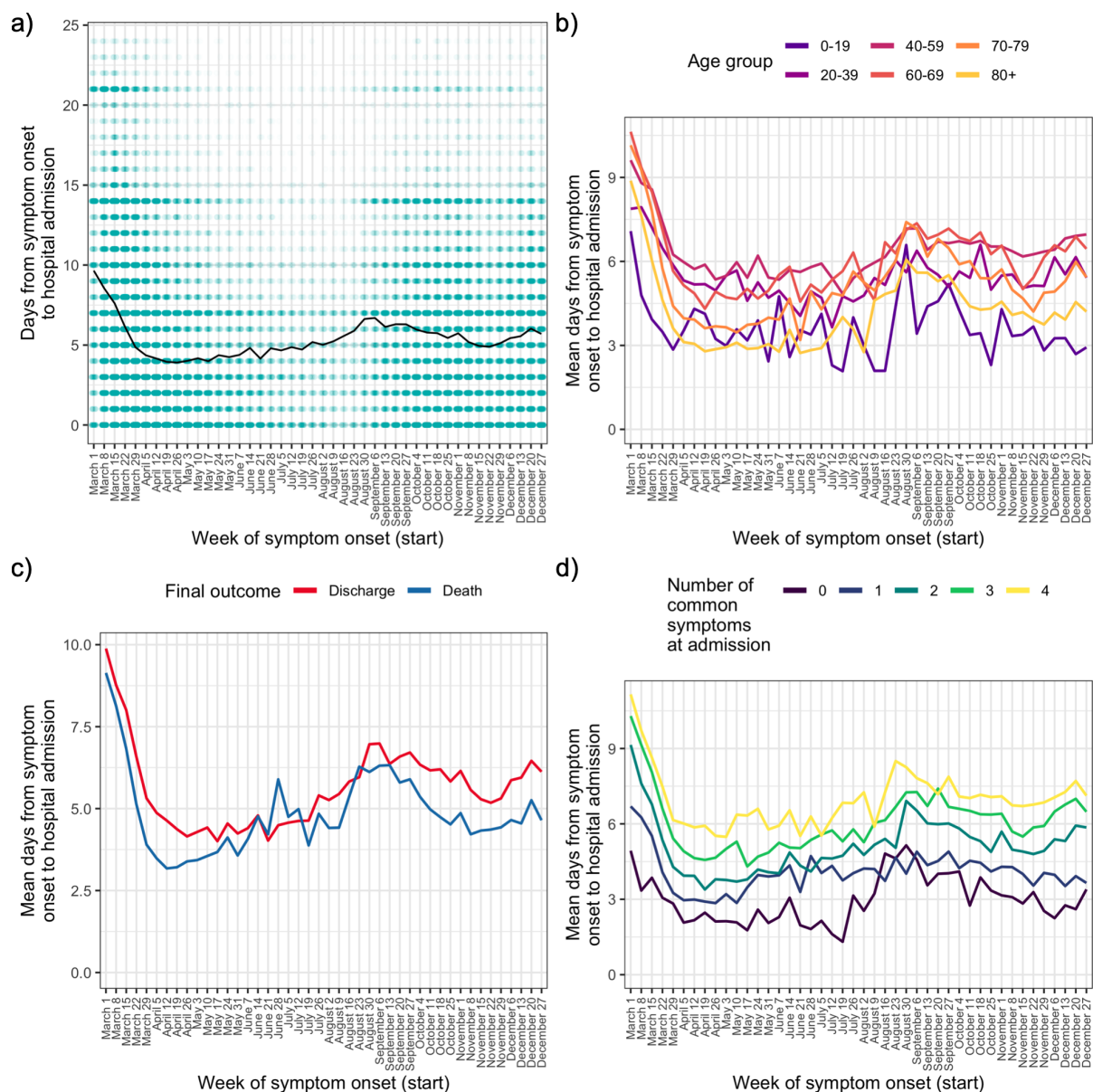
199 Little further variation occurred until late July, when a gradual increase started, which then
200 peaked at a median of 6 (IQR 2-9) for the weeks in late August and early September before a
201 decline to a low of a median 4 (IQR 1-7) days in November; this was followed by another
202 slight increase in December. Times from onset of symptoms to admission were shortest in
203 the oldest and youngest age groups (figure 1b). Patients with a fatal outcome had, generally,
204 shorter times from onset of symptoms until admission compared to survivors (figure 1c).

205

206 The four most frequent symptoms at admission were cough, fever, shortness of breath, and
207 fatigue; we class these as “common” (see Methods). The number of these that were present
208 increased with time to hospital admission (figure 1d), with the shortest times of all occurring
209 amongst those presenting with none of them. Amongst the 4,636 patients in this analysis
210 presenting with none, the most common other symptoms were confusion (51.6%), vomiting
211 (31.7%), abdominal pain (26%) and diarrhoea (18.9%). Within this group, confusion was the
212 single most common presenting symptom documented in patients over 60, while in younger
213 age groups the most prevalent symptoms were gastrointestinal (see supplementary table
214 S3).

215

216 We further explored this question using a multivariable linear regression analysis
217 (supplementary table S4). When compared to April, times from symptom onset to admission
218 were shorter in May and June, and longer in March and from August onwards (all $p < 0.01$;
219 see table S4 for confidence intervals). There was very strong evidence of an overall effect of
220 month of onset on time from onset to admission (Wald test $p < 0.001$). Patients aged 40-59
221 showed the longest times to admission when compared to any other age group (all $p < 0.001$;
222 see table S4 for CIs). Time from symptom onset to admission was also positively associated
223 with the number of “common” symptoms (25% increase per symptom, 95% CI 24.4%-
224 25.6%), the number of gastrointestinal symptoms (9.8% increase per symptom, 95% CI 9%-
225 10.5%), male sex (4.4% increase, 95% CI 3.4%-5.5%) and discharge as the final outcome
226 (13% increase, 95% CI 11.6%-14.5%).



227

228

Figure 1: Time from reported symptom onset to hospital admission, by week of reported

229

symptom onset. a) Green cells represent binned patients, with darker colours corresponding

230

to more individuals. The black line represents the mean. b)-d) Mean time to admission

231

plotted by patient characteristics: a) age group, b) final outcome, c) number of the four

232

most common symptoms (cough, fatigue, fever and shortness of breath) present upon

233

admission.

234

235

236

237 **ICU/HDU admission and time to ICU/HDU admission (questions 2 and 3)**

238

239 138,254 (97%) of patients with COVID-19 admission in 2020 had recorded data on whether
240 they ever admitted to an ICU/HDU or not; of these, 29,576 (21.4%) had been admitted at
241 least once. The proportion of individuals with an ICU/HDU admission showed a marked
242 decline over March followed by a renewed peak, and then subsequent decline, in June
243 through August (supplementary figure S1a). The oldest age group (80+) had by far the
244 smallest proportion of ICU/HDU admissions over the whole timeline (5.4%, compared with,
245 for example, 33.8% in the age-group 60-69). In a multivariable logistic regression model
246 (supplementary table S5), the following patterns were observed: there were higher odds of
247 ICU/HDU admission during all months except May, when compared to April (all $p < 0.01$, see
248 table S5 for CIs); those aged 80+ had lower odds of ICU/HDU admission (OR 0.12 for
249 admission when compared to the 40-59 age group, 95% CI 0.11-0.13). Males were more
250 likely to be admitted to ICU/HDU (OR 1.53, 95% CI 1.47-1.59). Patients who died had greatly
251 increased odds of having been previously admitted (OR 5.38, 95% CI 5.13-5.65). Compared
252 to those with symptom onset less than a week before hospital admission, patients with
253 nosocomial infections had lower odds of being admitted to ICU/HDU (OR 0.68, 95% CI 0.62-
254 0.74), whereas those with longer times to hospital admission had increased odds (OR 1.36
255 for 7-13 days, 95% CI 1.31-1.42, 1.28 for 14 or more days, 95% CI 1.2-1.37). An overall effect
256 of month of COVID admission on odds of ICU/HDU admission was highly significant (Wald
257 test $p < 0.0001$). Increasing numbers of gastrointestinal symptoms (abdominal pain, vomiting,
258 diarrhoea) were associated with slightly lower odds of admission (OR 0.94 per symptom,
259 95% CI 0.91-0.96). Comorbidities associated with higher odds of admission were HIV/AIDS

260 (OR 1.46, 95% CI 1.14-1.88), hypertension (OR 1.26, 95% CI 1.2-1.32) and obesity (OR 1.74,
261 95% CI 1.65-1.83), whereas a wide variety of serious or chronic medical conditions were
262 associated with lower odds (see Table S5), as was smoking (OR 0.82, 95% CI 0.85-0.9). The
263 most extreme fitted odds ratio for a comorbidity with a positive association was 1.74 for
264 obesity, while that for an inverse association was 0.21 for dementia.

265

266 We next analysed time from COVID-19 admission in 2020 to first ICU/HDU admission.

267 Excluding those with missing data on this variable, this dataset comprised 26,687 individuals
268 with a maximum time to ICU/HDU of thirteen days. The median time to ICU/HDU was 1 day
269 (IQR 0-2). Raw time trends in this variable were modest (supplementary figure S1b).

270 Multivariable linear regression (supplementary table S6) nevertheless did show evidence for
271 an overall association with month of COVID-19 admission (Wald test $p < 0.001$), with, when
272 compared to April, evidence for longer times to ICU/HDU in March, October and December
273 (all $p < 0.001$; see Table S6). Time to ICU/HDU also showed a general increase with age (Wald

274 test for overall association $p < 0.001$). There was no evidence of an association with final

275 outcome (death or discharge) or with sex. Time to ICU/HDU admission increased with the

276 number of GI symptoms (9% increase per symptom, 95% CI 7.5%-10.5%). Compared to

277 patients admitted to hospital within a week of symptom onset, those with a nosocomial

278 infection had a 66% increase in time to ICU/HDU (95% CI 54.4%-78.4%) while those with

279 longer times to admission had shorter times to ICU/HDU (9.2% decrease for 7-13 days, 95%

280 CI 7.1%-11.1%, 14.9% decrease for 14 or more days, 95% CI 11.8%-17.8%). Comorbidities

281 associated with longer time to ICU/HDU were asthma (7% increase, 95% CI 3.8%-10.2%),

282 chronic haematological disease (20.6% increase, 95% CI 12.8%-28.9%), and chronic kidney

283 disease (9.8% increase, 95% CI 5.9%-13.9%). In contrast, obesity (7.5% decrease, 95% CI

284 5.1%-9.9%), diabetes (3.5% decrease, 95% CI 0.7%-6.1%) and smoking (4.9% decrease, 95%
285 CI 0.1%-9.5%) were associated with shorter time to ICU. There was also evidence of a longer
286 time to ICU/HDU amongst pregnant patients (17.5%, 95% CI 3.4%-33.5%).

287

288

289 **Case fatality rate and time from COVID-19 admission to outcome (questions 4 and 5)**

290

291 We next analysed the final outcome of death or discharge, and the total time from hospital
292 admission to one of those outcomes, in a set of 113,797 patients admitted during 2020 with
293 one of those outcomes recorded (81.8% of the total). The raw case fatality rate (CFR) was
294 0.3. The median time to death was 8 days (IQR 4-14) and to discharge 7 (IQR 4-14). Over the
295 entire ten-month period of interest (supplementary figure S4), peak CFR was 0.35 in the
296 week beginning 8 March. There was a decline over the spring to a low of 0.17 in the week
297 beginning 12 July, but this trend subsequently reversed and reached 0.32 by mid-December.

298 At the same time, the mean time from admission to outcome in this whole population

299 showed very little change following a dramatic decline during March, from 16 days in the

300 week beginning 1 March to 10 at the start of April (supplementary figure S3). These overall

301 patterns, however, mask substantial variation based on ICU/HDU admission and, in the

302 latter case, outcome (figure 2). The trend in CFR is largely driven by patients who were not

303 admitted to an ICU or HDU. The most consistent decline in time to outcome was observed in

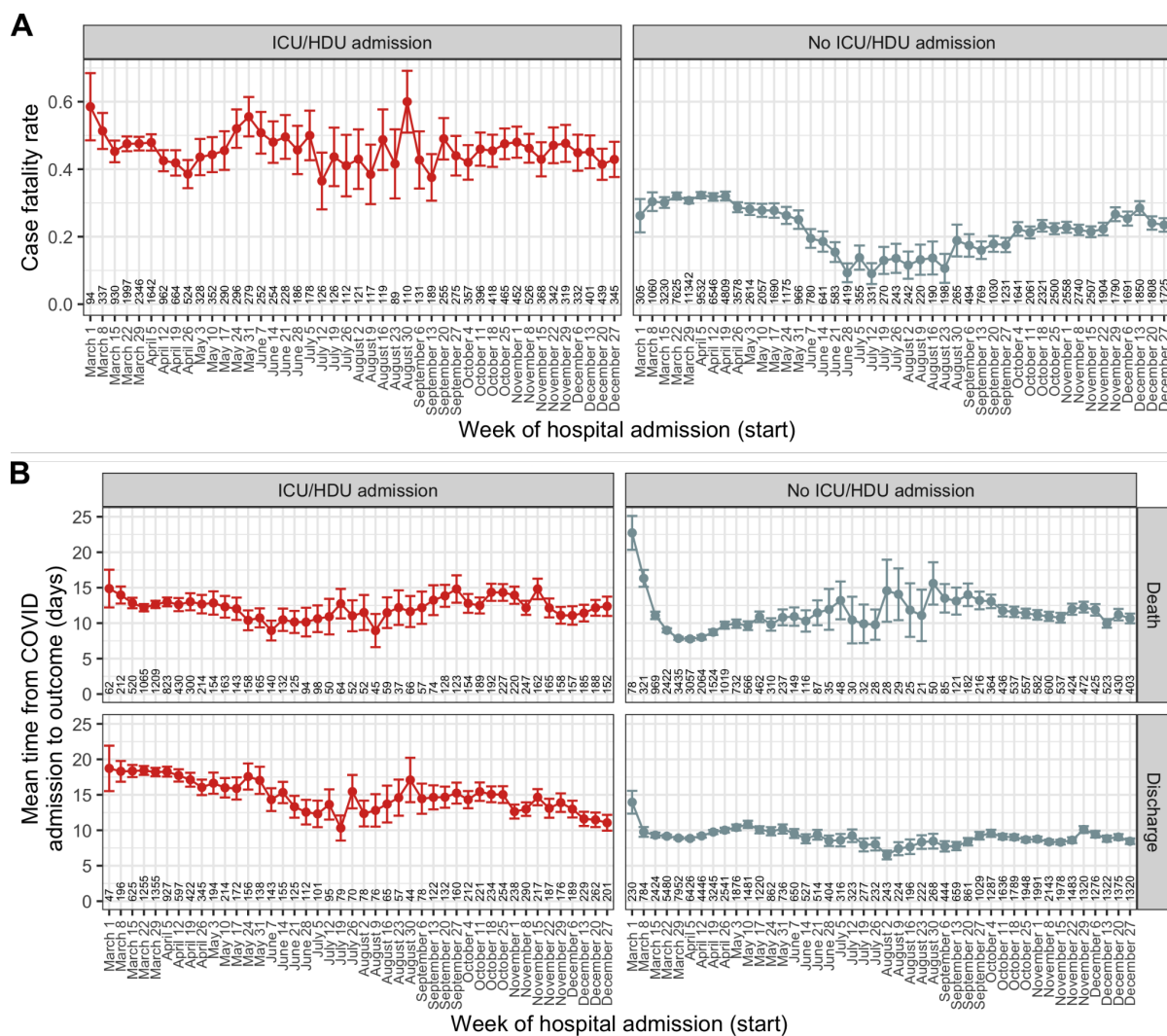
304 ICU/HDU admissions who survived (a decline in the mean of 7.6 days between the first and

305 last weeks studied, figure 2B, bottom left) while survivors with no ICU/HDU admission

306 showed, as with the overall trend, little change after March (bottom right). Variation in time

307 to death appeared very modest amongst patients with an ICU/HDU admission (top left),

308 while there was a distinct peak around August and September in those without (top right).
 309 When age is also considered (supplementary figures S5 and S6) a notable additional pattern
 310 is the clear correlation of time to discharge and age in surviving non-ICU/HDU patients,
 311 which is much less obvious, if present at all, in patients with an ICU/HDU admission.
 312



313 **Figure 2:** A) Time trends in case fatality ratio, by recorded ICU/HDU admission. B) Time
 314 trends from COVID-19 admission to the outcome of death or discharge, further faceted by
 315 ICU/HDU admission. Points are mean values, and error bars represent the 95% confidence
 316 interval for the mean. Numbers along the x-axis indicate the numbers of patients involved in

319 each category.

320

321

322 The full results of the three multivariable regression analyses can be seen in table 4. There
323 was strong evidence of an association of month of COVID-19 admission with all three
324 variables (Wald test $p < 0.001$ in all cases).

325

326 Amongst non-ICU/HDU patients, the month with the greatest odds of death was March (OR
327 1.12 compared to April, 95% CI 1.06-1.17), while that with the smallest was July (OR 0.35,
328 95% CI 0.29-0.43). April (the reference category) was the month with the shortest time to
329 death, while August had the longest (47.1% increase, 95% CI 29.5%-67.2%). Variation in time
330 to discharge was more modest; the month with the largest value of this variable was March
331 (3.6% increase, 95% CI 2.1%-5.2%), and that with the shortest was August (10.8% decrease,
332 95% CI 6.4%-15%).

333

334 ICU/HDU admission was associated with a 7.5-fold higher odds of death (95% CI 6.74-7.83),
335 a 68.1% increase in time to death (95% CI 58.9%-77.8%) and a 149.9% increase in time to
336 discharge (95% CI 132.8%-147.1%). As a result of the patterns observed in figure 2, we also
337 fitted interaction terms of month of COVID-19 admission with ICU/HCU admission. Their
338 inclusion was consistently statistically significant (Wald test $p < 0.001$ in all cases), although
339 for odds of death this ceases to be true when December is removed ($p = 0.24$). Hence, the
340 overall increased odds of death amongst ICU/HDU patients was significantly mitigated in
341 December (combined OR 5.96 vs non-ICU/HDU admissions in December, 95% CI 5.13-6.92).

342 There was no evidence that ICU/HDU patients admitted in March and May had a longer time

343 to death than April, but the estimates for all other months were significantly longer, with
344 the peak in November (18.5% increase, 95% CI 13.1%-24.1%). The longest times to
345 discharge were in March (4.3% increase vs April, 95% CI 1.3%-7.3%) and the shortest in
346 December (26.4% decrease, 95% CI 22.8%-29.8%).

347

348 Increasing age was associated with monotonic increases in odds of death and time to
349 discharge, with and without ICU/HDU admission. Time to death showed little evidence of
350 variation by age in non-ICU/HDU patients except for marginal evidence for an increase in
351 the oldest age group (4.7% increase vs 40-59, 95% CI 0.2%-9.5%). In ICU/HDU patients,
352 however, where an interaction term was again fitted, the shortest times to death were
353 recorded in both the youngest (43.1% decrease, 95% CI 30.4%-53.6%) and oldest (25.2%
354 decrease, 95% CI 22.2%-28.1%) groups; longest times to death were in middle-aged adults
355 (40-69). (Note that all recorded comorbidities were controlled for here.) Male sex was
356 associated with higher odds of death (OR 1.31, 95% CI 1.27-1.435, and small increases in
357 time to both death (3.2% increase, 95% CI 1.7%-4.8%) and discharge (1.1% increase, 95% CI
358 0.1%-2%). Nosocomial infection was also associated with higher odds of death (OR 1.27,
359 95% CI 1.2-1.34) and large increases in time to death (20.6% increase, 17.8%-23.5%) and
360 discharge (45.6% increase, 95% CI 42.8%-48.5%). Patients admitted more than a week from
361 symptom onset had lower odds of death, and shorter stays in hospital, regardless of
362 outcome (see table 4). Where associations with comorbidities were detected, the majority
363 were in the direction of poorer outcomes (increased CFR, decreased time to death, and
364 increased time to discharge), with a few exceptions. Most notably, asthma was associated
365 with lower odds of death (OR 0.92, 95% CI 0.88-0.97), longer times to death (2.5% increase,
366 CI 0.2%-4.8%) and shorter times to discharge (1.7% decrease, 95% CI 0.3%-3%).

367

	Odds ratio (death vs discharge)	Time to death (% change, days)	Time to discharge (% change, days)
Month of COVID admission (ref: April)			
March	1.117*** (1.064, 1.173)	14.692*** (12.176, 17.264)	3.627*** (2.097, 5.180)
May	0.734*** (0.689, 0.783)	15.408*** (11.962, 18.961)	1.340 (-0.591, 3.308)
June	0.525*** (0.470, 0.586)	20.489*** (13.967, 27.386)	-2.832 (-5.584, 0.0002)
July	0.349*** (0.286, 0.427)	27.666*** (14.513, 42.330)	-8.526*** (-12.156, -4.747)
August	0.430*** (0.338, 0.548)	47.134*** (29.453, 67.230)	-10.793*** (-14.981, -6.398)
September	0.569*** (0.507, 0.638)	40.603*** (32.489, 49.213)	-3.122* (-5.725, -0.448)
October	0.643*** (0.601, 0.687)	33.306*** (28.981, 37.777)	-1.445 (-3.233, 0.376)
November	0.622*** (0.584, 0.663)	26.799*** (22.875, 30.847)	-3.555*** (-5.234, -1.846)
December	0.801*** (0.749, 0.857)	26.251*** (22.284, 30.347)	2.133* (0.196, 4.108)
Age group (ref: 40-59)			
0-19	0.255*** (0.164, 0.395)	-0.983 (-24.593, 30.019)	-33.560*** (-35.658, -31.393)
20-39	0.268*** (0.208, 0.344)	-2.177 (-16.259, 14.272)	-16.891*** (-18.506, -15.245)
60-69	2.900*** (2.663, 3.158)	-1.845 (-6.638, 3.195)	17.335*** (15.520, 19.179)
70-79	5.991*** (5.541, 6.478)	2.266 (-2.269, 7.011)	36.292*** (34.166, 38.452)
80+	10.595*** (9.808, 11.444)	4.773* (0.213, 9.541)	52.631*** (50.155, 55.148)
ICU/HDU admission			
Sex (ref: Female)	7.487*** (6.738, 8.319)	68.114*** (58.934, 77.824)	139.889*** (132.846, 147.145)
Male	1.307*** (1.266, 1.350)	3.231*** (1.713, 4.771)	1.051* (0.089, 2.022)
Number of GI symptoms (max 3)	0.817*** (0.798, 0.836)	4.085*** (2.917, 5.266)	-0.898** (-1.487, -0.306)
Days from symptom onset to hospital admission (ref: 0-6):			
Nosocomial infection	1.265*** (1.199, 1.335)	20.616*** (17.840, 23.457)	45.612*** (42.813, 48.466)
7-13	0.735*** (0.707, 0.765)	-1.904* (-3.717, -0.057)	-3.486*** (-4.519, -2.443)
14+	0.757*** (0.715, 0.801)	-0.395 (-3.059, 2.342)	-6.005*** (-7.515, -4.470)
Pregnant	0.615** (0.384, 0.983)	-5.144 (-27.194, 23.585)	-18.723*** (-22.483, -14.780)
Comorbidities			
Asthma	0.927** (0.884, 0.972)	2.463* (0.158, 4.821)	-1.671* (-2.975, -0.349)
Chronic cardiac disease	1.237*** (1.194, 1.281)	-2.855*** (-4.367, -1.320)	1.325* (0.094, 2.572)
Chronic haematologic disease	1.234*** (1.143, 1.333)	0.106 (-3.189, 3.514)	5.842*** (3.112, 8.645)
Chronic kidney disease	1.425*** (1.368, 1.485)	-2.512** (-4.216, -0.777)	5.796*** (4.201, 7.416)
Chronic neurological disorder	1.350*** (1.287, 1.415)	-0.595 (-2.651, 1.503)	15.244*** (13.364, 17.156)
Chronic pulmonary disease	1.347*** (1.294, 1.402)	-2.134* (-3.858, -0.379)	3.796*** (2.336, 5.276)
Dementia	1.460*** (1.395, 1.528)	-0.804 (-2.740, 1.171)	8.837*** (6.840, 10.872)
Diabetes	1.132*** (1.085, 1.182)	-4.198*** (-6.016, -2.345)	1.788* (0.372, 3.224)
HIV/AIDS	1.260 (0.967, 1.640)	3.974 (-8.188, 17.748)	2.282 (-5.017, 10.142)
Hypertension	0.956* (0.921, 0.993)	0.104 (-1.613, 1.852)	1.983*** (0.812, 3.167)
Liver disease	1.460*** (1.337, 1.594)	4.725* (0.648, 8.966)	12.106*** (9.104, 15.190)
Malignant neoplasm	1.447*** (1.376, 1.522)	3.350** (1.120, 5.628)	2.199* (0.346, 4.087)
Malnutrition	1.355*** (1.226, 1.498)	0.362 (-3.794, 4.698)	11.586*** (7.588, 15.733)
Obesity	1.149*** (1.092, 1.209)	-5.508*** (-7.748, -3.213)	6.373*** (4.869, 7.898)
Rheumatological disorder	0.960 (0.914, 1.008)	2.142 (-0.127, 4.463)	0.636 (-0.987, 2.286)
Smoking	1.138** (1.053, 1.229)	4.174* (0.457, 8.029)	2.175* (0.009, 4.387)
Interaction: ICU/HDU admission × month of admission (ref: April)			
March	1.031 (0.930, 1.143)	-14.181*** (-17.914, -10.278)	0.638 (-3.092, 4.511)
May	1.102 (0.945, 1.285)	-12.140*** (-17.705, -6.198)	-8.976*** (-13.861, -3.815)
June	1.249* (1.023, 1.525)	-8.951* (-16.578, -0.626)	-11.282*** (-17.100, -5.055)
July	1.385* (1.040, 1.845)	-14.473* (-25.526, -1.779)	-18.800*** (-25.201, -11.850)
August	1.149 (0.827, 1.598)	-28.009*** (-38.519, -15.703)	-15.608*** (-23.153, -7.323)
September	1.093 (0.889, 1.344)	-16.820*** (-24.314, -8.583)	-6.925* (-13.081, -0.332)
October	1.105 (0.961, 1.272)	-13.815*** (-19.001, -8.296)	-11.601*** (-15.924, -7.056)
November	1.097 (0.954, 1.262)	-6.583* (-12.137, -0.677)	-15.936*** (-20.024, -11.639)
December	0.796** (0.689, 0.919)	-11.471*** (-16.856, -5.738)	-27.920*** (-31.450, -24.208)
Interaction: ICU/HDU admission × age group (ref: 40-59)			
0-19	0.843 (0.473, 1.503)	-42.648** (-59.184, -19.412)	2.160 (-5.645, 10.610)
20-39	1.823*** (1.365, 2.435)	-11.657 (-25.744, 5.102)	0.785 (-3.581, 5.348)
60-69	0.735*** (0.654, 0.827)	2.273 (-3.881, 8.821)	-7.200*** (-10.376, -3.912)
70-79	0.602*** (0.535, 0.677)	-11.994*** (-16.979, -6.710)	-21.758*** (-24.860, -18.527)
80+	0.399*** (0.344, 0.463)	-28.613*** (-33.082, -23.846)	-40.114*** (-43.635, -36.373)
Observations	102,147	31,250	70,897

Note: *p<0.1; **p<0.05; ***p<0.01

368

369 **Table 4:** Combined results of logistic regression analysis identifying predictors of death as an

370 outcome, and two linear regression analyses identifying correlates of time to death and

371 time to discharge. For brevity, the country variable, as well as the “unknown” class for each

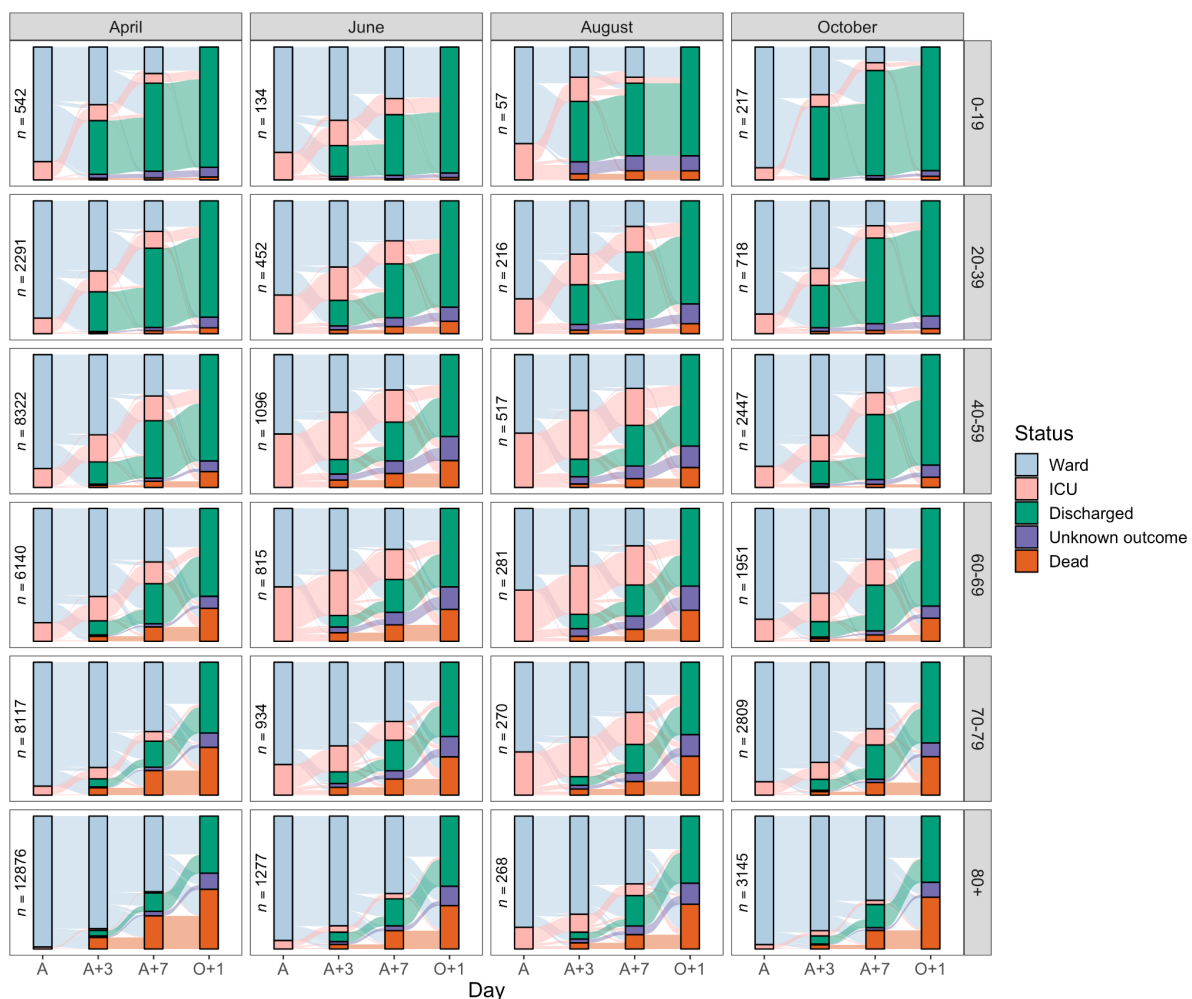
372 comorbidity (representing patients with missing data for that condition) are omitted here;

373 see table S7 for a version with them included.

374

375 **Status by days since admission**

376 Figure 3 displays Sankey diagrams reflecting the location of patients within hospital (ward or
377 ICU) or their final status (dead, discharged, or unknown) on the day of COVID-19 admission
378 (A), three days later (A+3), seven days later (A+7) or, to represent the final status only, one
379 day after the last day in hospital (O+1). The plot is faceted by age group and month of
380 COVID-19 admission. For simplicity, only four months (March, May, June and September)
381 appear in the main figure, but see Supplementary Figure S2 for all months, featuring a total
382 of 129,044 patients (90.5%).
383



384

385 **Figure 3:** Sankey diagrams depicting the progress through the inpatient journey for patients
386 with COVID-19 admission in April, June, August and October 2020, and subdivided by age.

387 Bars are presented for the day of admission (A), three and seven days later (A+3 and A+7),
388 and the day after final outcome (O+1).

389

390 **Discussion**

391

392 To the best of our knowledge and at the time of publication, this is the largest international
393 cohort of COVID-19 patients in the world. Considerable temporal variations in the events
394 preceding and during hospitalization for patients with confirmed COVID-19 were observed
395 during the period March to November/December 2020. We specifically looked at length of
396 illness before admission, probability of ICU/HDU admission, time to ICU/HDU admission for
397 those so admitted, case fatality rate, and duration of admission overall.

398

399 These results highlight key findings with practical implications for case management,
400 resource allocation, performance benchmarking, and reporting of outcomes in research,
401 and point to the fact that patient's journeys vary over time and must be interpreted with
402 the background of transmission intensity, policy, and practice where cases occur. Therefore,
403 static 'snapshots' of the situation at any one time may lead to misguided practice and
404 management if not regularly monitored and approaches adapted accordingly.

405

406 In a recent preprint (Kirwan et al. 2021), Kirwan et al analysed temporal variation on time
407 from hospital admission to death, discharge or ICU/HDU admission amongst a smaller
408 cohort of UK patients. We confirm many of the trends that they identified, including the
409 lower CFRs over the summer and the increased odds of ICU/HDU admission in middle-aged
410 age groups. They did not, however, detect the increase in the proportion of patients with an

411 ICU/HDU admission during the summer, or the decline in time to discharge amongst non-
412 ICU/HDU patients over the entire time period. As there were many fewer hospitals included
413 in that study than in ours (31 versus 620) this may be suggestive of variation in available
414 ICU/HDU capacity and usage amongst participating sites in the two studies.

415

416 **Prior to admission.** Across all age groups, the length of illness before seeking hospital care
417 was longest in July and August when case numbers were lower, and shortest at the
418 extremities of the age distribution and for females. These variations may partially be
419 explained by variations in health-care-seeking behaviour by different demographics, and by
420 differences in clinical progression of disease for different groups. For example, patients who
421 died had consistently shorter duration of illness before hospital admission, possibly
422 reflecting the fact that more serious cases evolve more rapidly and those affected seek care
423 earlier – patients admitted after experiencing symptoms for longer than 1 week were less
424 likely to die. The peak in time to admission during late summer and early autumn in the
425 Northern Hemisphere may reflect delayed presentation following return from holiday,
426 particularly given the high proportion of UK patients in this dataset and known viral
427 importations to the UK from continental Europe around that time (Hodcroft et al. 2020).

428

429 At the same time, when considering the four most frequent symptoms at admission (fever,
430 short of breath, cough or fatigue), more symptoms were associated with a longer period
431 between onset of symptoms and admission – and this was consistently so across the entire
432 period under observation. This could be ascribed at least in part to variations in individual
433 behaviour; some patients may present to hospital with a single symptom while others may
434 wait a longer period until several have emerged. In addition, these phenomena could also

435 partially be attributed to how case definitions are applied by physicians, or to the patient's
436 own perceptions, or to those of their families. Some presentations are likely to be more
437 alarming to the latter two groups than others; for example, individuals with none of the four
438 symptoms described above were admitted fastest of all and, amongst these, confusion was
439 the most prevalent other symptom.

440

441 **During hospitalization.** Treating variables such as final outcome, ICU/HDU admission, or
442 length of stay, as variables that remain static throughout an evolving epidemic is
443 problematic, as demonstrated by our analyses. To give three examples: first, the case
444 fatality rate showed an overall decline from 0.35 for cases admitted in March to 0.21 in July,
445 followed by a renewed increase to 0.29 in December (see supplementary figure S3). Second,
446 the data underlying the alluvial plots (figure 3) allow us to determine that the proportion of
447 patients discharged within a week of admission rose from 0.24 in March to a peak of 0.34 in
448 September. Third, the proportion of still-admitted patients occupying an ICU/HDU bed
449 showed considerable variation: for example, at day 3 this went from 0.19 in March to 0.13
450 in April, then rose to a peak of 0.38 in August before declining again, reaching a low of 0.15
451 in November. Variations in clinical care, the influence of treatments, and changes in
452 available bed capacity are all likely to account for many of these differences. In older
453 patients, the availability of social care space is another important variable.

454

455 Patients older than 80 had odds of being admitted to ICU/HDU over eight times smaller than
456 those in the 40-59 category, which may reflect prognosis and the expected benefits of
457 ICU/HDU admission, as well as patient preferences. These decreased odds are also reflective
458 of the temporality of the data. March and April represent our data's highest volume, which

459 might reflect hospital capacity and the necessity for ICU/HDU prioritization. For the patients
460 who were admitted to ICU, there was no clear trend in the time from hospital admission to
461 transfer to ICU/HDU after March. Length of illness before admission to the hospital and
462 young age were associated with a shorter time from hospital admission to ICU/HDU (for
463 example, a 9.2% decrease for those waiting 7-13 days from onset compared to those waiting
464 less than a week, and 32% decrease amongst under-20s compared to the 40-59 age group),
465 while a smaller proportion of older patients are escalated to ICU/HDU (OR 0.51 for ICU/HDU
466 admission in the 70-79 age group) and after a longer time spent in the ward (a 4.2% increase
467 in the same age group).

468

469 **Outcome.** As mentioned above, in patients with an outcome of death or discharge, CFRs
470 decreased from 0.35 in March to 0.21 by mid-2020 to increase again to 0.29 in December,
471 mostly following the waves in the pandemic and therefore the number of admissions.
472 System capacity may be an important predictor of patient outcome and may supersede
473 other factors such as increasing case management skills and the influence of new therapies.
474 This also warns against using outcome data that are not adequately controlled to assess
475 efficacy and safety of treatments or other interventions, as effects may rather reflect
476 capacity of a system to provide high-quality care.

477

478 We found that shorter time to death is associated with female sex, lack of ICU/HDU
479 admission, and, amongst ICU/HDU patients, the extremes of age. Shorter time to discharge
480 is also associated with female sex and lack of ICU/HDU admission, and this variable
481 increases monotonically with age.

482

483 Cautionary notes in interpreting these findings. First, the dataset analysed is made of
484 patients on the more severe end of the spectrum of disease compared to cases occurring in
485 the community. Second, about half of these patients were hospitalized in just two months
486 (March-April), were predominantly from the UK, and about half were over 70 years old.
487 These demographics explain the CFR and the large proportion of patients presenting with
488 age-related comorbidities – nearly half have hypertension, one-in-five chronic cardiac
489 disease, and one-in-six diabetes. Third, there are inherent limitations of observational data,
490 however large the dataset. Fourth, some variables are based on patient self-report which
491 can be inexact; for example it can be clearly seen in figure 1a that multiples of seven
492 reported days from symptom onset to admission are overrepresented, suggesting reports in
493 units of weeks. Fifth, one should refrain from overinterpreting data: some of the changes
494 observed reflect adjustments in practice and logistics, combined pressure on health
495 systems, more than actual effects of interventions. Sixth, resuscitation status and suitability
496 for intensive care admission was not collected in our cohort.

497

498 **Implications of findings.** Often, in high-income countries, patient outcomes are seen
499 through the lens of individualized treatment provided at the clinician patient interface. This
500 paper demonstrates that outbreak epidemiology has an important influence on patient
501 outcomes – the patient journey from likelihood of admission, through to disposition and
502 length of stay in hospital, and overall outcome, change over the course of a pandemic.
503 There are various explanations for variability – systems may at times be overwhelmed and
504 unable to provide the usual quality of care to their patients; patient behaviour may change
505 depending on perceptions of the status of the outbreak and the performance of the
506 healthcare system at a given time; clinician familiarity with management of patients may

507 vary; and changes in transmissibility and virulence are expected to occur.

508

509 The observed variability should inform on the limitations of using observational data during
510 a long-lasting pandemic for management purposes in practice, and also question the use of
511 some variables, such as length of stay in hospital or in ICU, as clinical trial outcomes. This
512 demonstrates the importance of controlling for patient outcome data when designing
513 clinical trials; for example, using our data, assessing a new treatment during the months of
514 March to July will have shown a decrease in CFR from 33%, to 21% that may have been
515 falsely attributed to a treatment effect without a concurrent randomised control.

516

517 At the same time, these findings also highlight the need for preparedness and resilience; the
518 crucial importance of pre-positioned observational data collection systems that are adhered
519 upon by a representative number of sites and are maintained for as long as the pandemic
520 lasts; and the need for such capacity to be kept in-between epidemics.

521

522 **Acknowledgments**

523

524 This work was supported by the UK Foreign, Commonwealth and Development Office and
525 Wellcome [215091/Z/18/Z] and the Bill & Melinda Gates Foundation [OPP1209135]; CIHR
526 Coronavirus Rapid Research Funding Opportunity OV2170359; Grants from Rapid European
527 COVID-19 Emergency Response research (RECOVER) [H2020 project 101003589] and
528 European Clinical Research Alliance on Infectious Diseases (ECRAID) [965313]; The Imperial
529 NIHR Biomedical Research Centre; The Cambridge NIHR Biomedical Research Centre; and
530 Endorsed by the Irish Critical Care- Clinical Trials Group, co-ordinated in Ireland by the Irish

531 Critical Care- Clinical Trials Network at University College Dublin and funded by the Health
532 Research Board of Ireland [CTN-2014-12].
533
534 This work uses Data / Material provided by patients and collected by the NHS as part of their
535 care and support #DataSavesLives. The Data / Material used for this research were obtained
536 from ISARIC4C. The COVID-19 Clinical Information Network (CO-CIN) data was collated by
537 ISARIC4C Investigators. Data and Material provision was supported by grants from: the
538 National Institute for Health Research (NIHR; award CO-CIN-01), the Medical Research
539 Council (MRC; grant MC_PC_19059), and by the NIHR Health Protection Research Unit
540 (HPRU) in Emerging and Zoonotic Infections at University of Liverpool in partnership with
541 Public Health England (PHE), (award 200907), Wellcome Trust [Turtle, Lance-fellowship
542 205228/Z/16/Z], NIHR HPRU in Respiratory Infections at Imperial College London with PHE
543 (award 200927), Liverpool Experimental Cancer Medicine Centre (grant C18616/A25153),
544 NIHR Biomedical Research Centre at Imperial College London (award IS-BRC-1215-20013),
545 and NIHR Clinical Research Network providing infrastructure support.
546
547 This work was possible due to the dedication and hard work of the Norwegian SARS-CoV-2
548 study team, and supported by grants from Research Council of Norway grant no 312780,
549 and a philanthropic donation from Vivaldi Invest A/S owned by Jon Stephenson von
550 Tetzchner; The dedication and hard work of the Groote Schuur Hospital Covid ICU Team,
551 and supported by the Groote Schuur nursing and University of Cape Town registrar bodies
552 coordinated by the Division of Critical Care at the University of Cape Town; and supported
553 by the COVID clinical management team, AIIMS, Rishikesh, India.
554

555 Matthew Hall and Christophe Fraser were supported by a Li Ka Shing Foundation award to

556 Christophe Fraser.

557

558

559

560 References

- 561 Bell, Lucy C. K., Caitlin Norris-Grey, Akish Luintel, Gabriella Bidwell, David Lanham, Michael Marks,
562 Tim Baruah, et al. 2021. "Implementation and Evaluation of a COVID-19 Rapid Follow-up Service
563 for Patients Discharged from the Emergency Department." *Clinical Medicine* 21 (1): e57–62.
- 564 Brunson, Jason. 2020. "Ggalluvial: Layered Grammar for Alluvial Plots." *Journal of Open Source*
565 *Software* 5 (49): 2017.
- 566 CMO Messaging. 2021. "Wuhan Novel Coronavirus." Mhra.gov.uk. 2021.
567 <https://www.cas.mhra.gov.uk/ViewandAcknowledgment/ViewAlert.aspx?AlertID=102959>.
- 568 Dennis, John M., Andrew P. McGovern, Sebastian J. Vollmer, and Bilal A. Mateen. 2021. "Improving
569 Survival of Critical Care Patients With Coronavirus Disease 2019 in England: A National Cohort
570 Study, March to June 2020." *Critical Care Medicine* 49 (2): 209–14.
- 571 Docherty, Annemarie B., Rachel H. Mulholland, Nazir I. Lone, Christopher P. Cheyne, Daniela De
572 Angelis, Karla Diaz-Ordaz, Cara Donegan, et al. 2021. "Changes in in-Hospital Mortality in the
573 First Wave of COVID-19: A Multicentre Prospective Observational Cohort Study Using the WHO
574 Clinical Characterisation Protocol UK." *The Lancet. Respiratory Medicine*, May.
575 [https://doi.org/10.1016/S2213-2600\(21\)00175-2](https://doi.org/10.1016/S2213-2600(21)00175-2).
- 576 Hodcroft, Emma B., Moira Zuber, Sarah Nadeau, Inaki Comas, Fernando Gonzalez Candelas,
577 SeqCOVID-SPAIN consortium, Tanja Stadler, and Richard A. Neher. 2020. "Emergence and
578 Spread of a SARS-CoV-2 Variant through Europe in the Summer of 2020." *medRxiv*, October,
579 2020.10.25.20219063.
- 580 ISARIC Clinical Characterisation Group. 2020. "Global Outbreak Research: Harmony Not Hegemony."
581 *The Lancet Infectious Diseases*, June. [https://doi.org/10.1016/S1473-3099\(20\)30440-0](https://doi.org/10.1016/S1473-3099(20)30440-0).
- 582 ISARIC Clinical Characterisation Group, Mark G. Pritchard, and Piero L. Olliaro. 2020. "Symptoms at
583 Presentation for Patients Admitted to Hospital with Covid-19: Results from the ISARIC
584 Prospective Multinational Observational Study." *medRxiv : The Preprint Server for Health*
585 *Sciences*, October. <https://doi.org/10.1101/2020.10.26.20219519>.
- 586 Kirwan, Peter D., Suzanne Elgohari, Christopher H. Jackson, Brian D. M. Tom, Sema Mandal, Daniela
587 De Angelis, and Anne M. Presanis. 2021. "Trends in Risks of Severe Events and Lengths of Stay
588 for COVID-19 Hospitalisations in England over the Pre-Vaccination Era: Results from the Public
589 Health England SARI-Watch Surveillance Scheme." *arXiv [stat.AP]*. arXiv.
590 <http://arxiv.org/abs/2103.04867>.
- 591 National Institute for Health and Care Excellence. 2021. "COVID-19 Rapid Guideline: Managing
592 COVID-19." <https://www.nice.org.uk/>. NICE. 2021. <https://www.nice.org.uk/guidance/ng191/>.
- 593 Nunan, J., D. Clarke, A. Malakouti, D. Tannetta, A. Calthrop, X. H. Xu, N. B. Chan, R. Khalil, W. Li, and
594 A. Walden. 2020. "Triage Into the Community for COVID-19 (TICC-19) Patients Pathway - Service
595 Evaluation of the Virtual Monitoring of Patients with COVID Pneumonia." *Acute Medicine* 19 (4):
596 183–91.
- 597 Pagel, C., M. Utey, and S. Ray. 2020. "Covid-19: How to Triage Effectively in a Pandemic." *BMJ*
598 *Opinion*. March 9, 2020. [https://blogs.bmj.com/bmj/2020/03/09/covid-19-triage-in-a-](https://blogs.bmj.com/bmj/2020/03/09/covid-19-triage-in-a-pandemic-is-even-thornier-than-you-might-think/)
599 [pandemic-is-even-thornier-than-you-might-think/](https://blogs.bmj.com/bmj/2020/03/09/covid-19-triage-in-a-pandemic-is-even-thornier-than-you-might-think/).

600 R Core Team. 2013. "R: A Language and Environment for Statistical Computing." [https://www.R-](https://www.R-project.org/)
601 [project.org/](https://www.R-project.org/).

602 Rochweg, Bram, Reed Ac Siemieniuk, Thomas Agoritsas, François Lamontagne, Lisa Askie, Lyubov
603 Lytvyn, Arnav Agarwal, et al. 2020. "A Living WHO Guideline on Drugs for Covid-19." *BMJ* 370
604 (September): m3379.

605 Rojek, Amanda M., and Peter W. Horby. 2016. "Modernising Epidemic Science: Enabling Patient-
606 Centred Research during Epidemics." *BMC Medicine* 14 (1): 212.

607 Tyrrell, Carina S. B., Oliver T. Mytton, Sarah V. Gentry, Molly Thomas-Meyer, John Lee Y. Allen,
608 Antony A. Narula, Brendan McGrath, et al. 2021. "Managing Intensive Care Admissions When
609 There Are Not Enough Beds during the COVID-19 Pandemic: A Systematic Review." *Thorax* 76
610 (3): 302–12.

611 Wickham, Hadley, Mara Averick, Jennifer Bryan, Winston Chang, Lucy McGowan, Romain François,
612 Garrett Grolemond, et al. 2019. "Welcome to the Tidyverse." *Journal of Open Source Software* 4
613 (43): 1686.

614 World Health Organisation. 2021. "COVID-19 Clinical Management: Living Guidance." World Health
615 Organization. January 25, 2021. [https://www.who.int/publications/i/item/WHO-2019-nCoV-](https://www.who.int/publications/i/item/WHO-2019-nCoV-clinical-2021-1)
616 [clinical-2021-1](https://www.who.int/publications/i/item/WHO-2019-nCoV-clinical-2021-1).

617