

Rapid and sustained decline in CXCL-10 (IP-10) annotates clinical outcomes following TNF- α antagonist therapy in hospitalized patients with severe and critical COVID-19 respiratory failure

Hilal Hachem^{1,2,*}, Amandeep Godara^{1,3,*}, Courtney Schroeder^{1,*}, Daniel Fein^{1,*}, Hashim Mann^{1,*}, Christian Lawlor¹, Jill Marshall¹, Andreas Klein¹, Debra Poutsiaka⁴, Janis L. Breeze⁵, Raghav Joshi¹, Paul Mathew¹

¹Division of Hematology-Oncology, Tufts Medical Center, Boston, MA 02111

²Northern Light Cancer Institute, Eastern Maine Medical Center, Bangor, ME 04401

³University of Utah School of Medicine, Division of Hematology & Hematologic Malignancies, Salt Lake City, UT 84112

⁴Division of Geographic Medicine and Infectious Diseases, Tufts Medical Center, Boston, MA 02111

⁵Tufts Clinical and Translational Science Institute, Tufts University, and Institute for Clinical Research and Health Policy Studies, Tufts Medical Center, Boston MA

*these authors share this position

Corresponding author:

Paul Mathew MD

Division of Hematology-Oncology

Tufts Medical Center

800 Washington Street, Box 245

Boston, MA 02111

[Tel:617-636-8483](tel:617-636-8483)

Email:pmathew@tuftsmedicalcenter.org

Background: A feed-forward pathological signaling loop generated by TNF α and IFN- γ in inflamed lung tissue, driving CXCL-10 (IP-10) and CXCL-9 chemokine-mediated activated T-cell and monocyte/macrophage tissue recruitment, may define, sustain and amplify the inflammatory biology of lethal COVID-19 respiratory failure.

Methods: To assess TNF α -antagonist therapy, 18 hospitalized adults with hypoxic respiratory failure and COVID-19 pneumonia received single-dose infliximab-abda therapy 5mg/kg intravenously between April and December 2020. The primary endpoint was time to increase in oxygen saturation to fraction of inspired oxygen ratio (SpO₂/FiO₂) by ≥ 50 compared to baseline and sustained for 48 hours. Secondary endpoints included 28-day mortality, dynamic cytokine profiles (Human Cytokine 48-Plex Discovery Assay, Eve Technologies), secondary infections, duration of supplemental oxygen support and hospitalization.

Findings: Patients were predominantly in critical respiratory failure (15/18, 83%), male (14/18, 78%), above 60 years (median 63 yrs, range 31-80), race-ethnic minorities (13/18, 72%), lymphopenic (13/18, 72%), steroid-treated (17/18, 94%), with a median ferritin of 1953ng/ml. Sixteen patients (89%) met the primary endpoint within a median of 4 days, 15/18 (83%) recovered from respiratory failure, and 14/18 (78%) were discharged in a median of 8 days and were alive at 28-day follow-up. Deaths among three patients ≥ 65 yrs age with pre-existing lung disease or multiple comorbidities were attributed to secondary lung infection. Mean plasma IP-10 levels declined sharply from 9183 pg/ml to 483 pg/ml at Day 3 and further to 146 pg/ml at Day 14/discharge. Significant declines in IFN- γ , TNF α , IL-27, CRP and ferritin were specifically observed at Day 3 whereas other cytokines were unmodified. IL-6 levels declined sharply among patients with baseline levels >10 pg/ml. Among 13 lymphopenic patients, six (46%) had resolution of lymphopenia by day 3, and 11 by day 14. CXCR3-ligand (IP-10 and

CXCL-9) declines were strongly correlated among patients with lymphopenia reversal (Day 3, Pearson r: 0.98, p-value: 0.0006).

Interpretation: Consistent with a pathophysiological role of TNF α , the clinical and cytokine data indicate that infliximab-abda may rapidly abrogate pathological inflammatory signaling to facilitate clinical recovery in severe and critical COVID-19. Randomized studies are required to formally assess mortality outcomes. Funding: National Center for Advancing Translational Sciences

Introduction:

Preclinical and clinical evidence indicates that TNF α may fundamentally orchestrate the hyperinflammatory cytokine signature and adverse disease course of COVID-19.^{1,2} Elevated circulating levels of TNF α and its known regulatory targets including interleukin-6 (IL-6) and ferritin, have been correlated with indices of disease severity, including intensive care needs, multisystem organ failure and death.³⁻⁵ A marked quantitative reduction in lymphocytes and natural killer cells in severe COVID-19 illness is accompanied by markers of immune exhaustion, which are inversely associated with levels of IL-6, IL-10 and TNF α .⁶ An aberrant hyperimmune response triggered by synergy between TNF α and IFN- γ in inflamed lung tissue may underpin the generation of markedly elevated T-cell chemokines CXCL-10 (IP-10) and CXCL-9, associated with immune exhaustion and adverse clinical outcomes.^{1,7,8} TNF α has been previously implicated as a master regulator of immune exhaustion in other biological contexts.⁹ In preclinical animal models of H1N1 influenza and lymphocytic choriomeningitis virus infection, anti-TNF α monotherapy resolved inflammation, restored immune surveillance, suppressed or cleared viral infection and prolonged survival.^{9,10} Based on the hypothesis that TNF α -antagonists may abrogate the adverse inflammatory cytokine profile of COVID-19 disease and reduce the need for advanced cardiorespiratory support, a pilot study of the infliximab biosimilar, infliximab-abda, was initiated in COVID-19 respiratory failure (NCT04425538). The goal of the study was to generate early efficacy, toxicity and cytokine correlative data to inform the next generation of studies.

Methods:

Patients (Figure 1): Eligible subjects were at least 18 years old, could provide informed consent, had pneumonia evidenced by chest X-ray or computerized tomography, and laboratory (reverse

transcriptase-polymerase chain reaction) confirmed infection for severe acute respiratory syndrome coronavirus 2 (SARS-CoV-2) with at least one of the following: respiratory frequency ≥ 30 /min, blood oxygen saturation $\leq 93\%$ on room air, partial pressure of arterial oxygen to fraction of inspired oxygen ratio (P_{aO_2}/F_{iO_2}) < 300 , worsening of lung involvement defined as an increase in number and/or extension of pulmonary areas of consolidation, need for increased F_{iO_2} to maintain stable oxygen saturation, or worsening oxygen saturation of $> 3\%$ with stable F_{iO_2} . Exclusion criteria included treatment with any TNF α inhibitor in the past 30 days, absolute neutrophil count less than 1000 mm³, hemoglobin < 7.0 g/L, platelets $< 50,000$ per mm³, or aspartate transaminase or alanine transaminase greater than 5 times the upper limit of normal, known active or latent hepatitis B, known or suspected active tuberculosis (TB) or a history of incompletely treated or latent TB, pregnancy, uncontrolled systemic bacterial or fungal infections (prior positive bacterial or fungal cultures on appropriate therapy with negative repeat cultures was permissible), myocardial infarction (within last month), moderate or severe heart failure (New York Heart Association class III or IV), acute stroke (within last month), uncontrolled malignancy, Stage 4 severe chronic kidney disease or requiring dialysis (i.e. estimated glomerular filtration rate (eGFR) < 30 ml /min/1.73 m²) at baseline. Prior and concurrent remdesivir, dexamethasone and convalescent plasma therapy were permitted. No limits to the level and duration of oxygenation support or hospitalization were specified, Infliximab-abda therapy was sanctioned as part of a COVID-19 care pathway for hospitalized patients by an institutional task force and by infectious disease and critical care medicine consultation for each patient. Patients who were judged to be improving on standard therapy or suspected to have active concomitant infection were not sanctioned for study consideration.

Therapy: Treatment with infliximab-abda 5mg/kg IV was planned within 6 hours of enrollment, and no more than 24 hours following enrollment. Pre-medication with acetaminophen 650 mg once, 30 minutes prior to infusion, was recommended. Retreatment with infliximab-abda was permitted at the treating physician's discretion 7-21 days following primary therapy. One patient (TMC-Pre) who met the eligibility criteria and was treated on the care pathway prior to the formal activation of the study was included in the analysis and reporting.

Laboratory studies: included complete blood counts and leucocyte differential, complete metabolic panels which included electrolytes, creatinine and liver function tests, inflammatory markers including serum ferritin and C-reactive protein (CRP) and a panel of cytokines performed at baseline prior to infliximab-abda (day 1) in all enrolled patients and on Days 3 and 14 or discharge if earlier. Luminex xMAP technology was employed for multiplexed quantification of 48 human cytokines, chemokines, and growth factors. The multiplexing analysis was performed using the Luminex™ 200 system (Luminex, Austin, TX, USA) by Eve Technologies Corp. (Calgary, Alberta). Forty-eight markers were simultaneously measured in the samples using Eve Technologies' Human Cytokine 48-Plex Discovery Assay® (MilliporeSigma, Burlington, Massachusetts, USA) according to the manufacturer's protocol. The 48-plex consisted of sCD40L, EGF, Eotaxin, FGF-2, FLT-3 Ligand, Fractalkine, G-CSF, GM-CSF, GRO α , IFN- α 2, IFN- γ , IL-1 α , IL-1 β , IL-1RA, IL-2, IL-3, IL-4, IL-5, IL-6, IL-7, IL-8, IL-9, IL-10, IL-12 (p40), IL-12(p70), IL-13, IL-15, IL-17A, IL-17E/IL-25, IL-17F, IL-18, IL-22, IL-27, IP-10, MCP-1, MCP-3, M-CSF, MDC, MIG/CXCL9, MIP-1 α , MIP-1 β , PDGF-AA, PDGF-AB/BB, RANTES, TGF α , TNF- α , TNF- β , and VEGF-A. Assay sensitivities of these markers range from 0.14 – 50.78 pg/mL.

Endpoints: The primary endpoint of the pilot study was time to improvement in oxygenation (increase in oxygen saturation to fraction of inspired oxygen ratio SpO₂/FiO₂ of 50 or greater compared to the baseline SpO₂/FiO₂) sustained for a minimum of 48 hours. Secondary endpoints included 28-day mortality, assessment of dynamic changes in cytokine and inflammatory profile after therapy, qualitative and quantitative toxicity, incidence and duration of supplementation oxygen support including mechanical ventilation and extracorporeal membrane oxygenation (ECMO), duration of hospitalization and frequency and spectrum of secondary infections. COVID-19-associated pulmonary aspergillosis diagnoses were annotated by consensus criteria.¹¹

Statistics: Mean ferritin, CRP, and cytokine levels on Day 1 and the mean dynamic change on Day 3 and Day 14 were compared using pairwise ratio t-tests (GraphPad Prism). Given the number of comparisons (50 at each timepoint), a 5% false-discovery rate (FDR) was applied using the Benjamini-Hochberg method, and those cytokines that met statistical significance at the adjusted thresholds are also reported. Given that post-steroid therapy IL-6 levels at different cut-off levels have been shown to correlate with adverse outcomes^{12,13}, the impact of infliximab on IL-6 levels at Day 3 and Day 14 stratified by degree of baseline elevation in the largely steroid-pretreated population was separately analyzed. Pearson correlation coefficients were calculated for fold changes (log₂ transformed ratio) in expression from baseline to day 3 between each pair of cytokines. In all statistical comparisons, values for samples whose cytokine levels were below the assay detection limits were replaced by the sensitivity of the assay for each respective cytokine. Descriptive statistics annotate the remaining endpoints.

Study approval: The study was approved by the institutional review board and written informed consent was received from participants or designees prior to inclusion.

Results

The demographics, clinical features, inflammatory markers and outcomes of 18 patients with COVID-19 respiratory failure treated with infliximab-abda between April and December 2020 are represented in Table 1. The median age was 63 years (range 31-80), largely male (78%), and race-ethnic minority (Asian, South Asian, Black, Hispanic or Latino, 72%) with at least one significant medical comorbidity (72%). Comorbidities included hypertension (67%), diabetes (28%), smoking history (22%) or chronic lung disease, including asthma (22%). Half were obese or morbidly obese; the median body mass index was 30.3 kg/m² (range 18.0-41.8). The median Charlson Comorbidity Index was 2.5 (range 0-9). Sixteen patients (89%) had received both remdesivir and steroid therapy (median 2 days, range 0-7 days) with infliximab-abda therapy supported by the infectious disease consultative service. Five patients (28%) received prior convalescent plasma (median 2 days, range 0-4 days). Fifteen patients (83%) were on high-flow nasal cannula (HFNC), mechanical ventilation (MV) and/or extracorporeal membrane oxygenation (ECMO) and four (22%) were receiving vasopressor support. The median ferritin level was 1953 ng/ml and 13/18 (72%) of patients were lymphopenic. The median baseline SpO₂/FiO₂ was 202 (range 110-336). The median duration from symptom onset to infliximab-abda therapy was 10 days (range, 5-29 days), and the median duration from hospitalization to infliximab-abda therapy was 2 days (range, 0-7 days).

Following infliximab-abda therapy, sixteen patients (89%) met the primary endpoint of sustained improvement in SpO₂/FiO₂ of ≥ 50 for at least 48 hours and fifteen patients (83%) had resolution of respiratory failure to room air or nasal cannula (NC) oxygen supplementation. The median time to the primary endpoint was 4 days (range, 1-12 days). The median support duration among patients requiring NC was 3 days (range, 1-4 days), for HFNC 2.5 days (range, 2-6 days),

and MV 10 days (range, 5-45 days) (Figure 2). One patient on ECMO was successfully decannulated after 16 days. One patient on MV with prior steroid and tocilizumab-failure and on multiple vasopressors was successfully extubated to full recovery of respiratory failure on room air. No patient received a second dose of infliximab-abda. Fifteen patients (83%) were alive at the end of the 28-day study period, with one death occurring on day 34. Fourteen patients (78%) were discharged after a median of 8 days (range 1-52 days), 3 on oxygen supplementation via NC and 11 on room air.

By Day 3 there was a significant decline from elevated baseline levels in a subset of pro-inflammatory and immunomodulatory cytokines which have been implicated in pathogenesis and/or adverse outcomes from severe COVID-19 illness, including IP-10, IL-10, IL-27, TNF- α and IFN- γ ^{1,5,8,14-16} (Figure 3, Supplemental Table 1). Among patients with elevated IL-6 levels at baseline (≥ 10 pg/ml), including one without steroid exposure, sharp declines at Day 3 were uniformly observed (Figure 3, Supplemental Figures 1-2). CRP and ferritin were significantly lower as well. Reduction of the CXCR3-ligands IP-10 and CXCL-9,^{8,14} IL-27, CRP and ferritin at Day 14 were sustained although only IP-10 stood up to adjustment for multiple comparisons among the 50 cytokines and markers assessed. The majority of inflammatory and immunomodulatory cytokines assessed in the 48-plex assay did not change significantly, either at Day 3 or Day 14 (Figure 3, Supplemental Table 1).

Among 13 patients who were lymphopenic at baseline, six (46%) had complete resolution of lymphopenia by day 3, and 11 recovered by day 14. Absolute lymphocyte counts (normal 1.0-4.0 K/ μ l) increased from an average baseline of 0.8 to 1.0 K/ μ l by day 3 (P=0.038, n=17) and 1.7 K/ μ l by day 14/discharge (P=0.0004, n=13). Absolute monocyte counts (normal 0.2-0.8 K/ μ l) also increased from an average baseline of 0.5 to 0.8 K/ μ l by day 3 (P= 0.0045, n=17) and 1.1

K/ μ l by day 14/discharge (P=0.002, n=13). Accordingly, the strongest correlation between dynamic changes in IP-10 among all tested cytokines between baseline and Day 3 (Supplemental Table 2) was with CXCL-9 (Pearson r: 0.653, p-value: 0.004, n=17), in particular among lymphopenic patients (Pearson r: 0.843, p-value: 0.0003, n=13) and those that recovered by Day 3 (Pearson r: 0.98, p-value: 0.0006, n=6) and Day 14 (Pearson r: 0.85, p value 0.008, n=8 evaluable), whereas this correlation was not detectable among the small number of non-lymphopenic patients (Pearson r: -0.217, p-value: 0.782, n=4). Among the non-lymphopenic patients, IP-10 decline correlated instead with IL12p40, a homodimeric inhibitory subunit of IL-12.

Infliximab-abda was well tolerated. Two patients experienced transient Grade 1 infusion-related reactions. Transaminase elevations occurred in 11 patients but association with infliximab-abda could not be inferred. There were no cases of deep venous thrombosis or pulmonary thromboembolism. Transient clinical worsening among 2 patients following rapid lymphocyte recovery raised suspicions of an immune reconstitution inflammatory syndrome (IRIS). One patient with suspected IRIS received high-dose steroids with subsequent clinical improvement but later succumbed to secondary infection.

All active infections were considered as controlled at the time of infliximab-abda administration. Seventeen secondary infections were encountered in eight patients (44%), all of whom were mechanically ventilated or on ECMO for critical respiratory failure. Six were lymphopenic, four patients were diabetic, three had chronic lung disease, seven had hypertension, and all had prior steroid therapy for a median duration of five days. The majority of enrolled patients with diabetes (4/5), chronic lung disease (3/4), hypertension (7/12) and those on MV/ECMO support (8/9) were eventually diagnosed with secondary infections. Nine

infections (53%) were bacterial, four (24%) were fungal, and four (24%) were viral in etiology (Supplemental Table 3). Median time to diagnosis was 9 days (range, 1-35 days). The most common diagnosis was ventilator-associated pneumonia (41%). Two instances of herpes simplex virus pneumonitis were observed, one of which was diagnosed at autopsy with concomitant necrotizing pyogenic infection in a patient with underlying diabetes, hypertension and obesity who had received high-dose parenteral steroids. One possible and two probable instances of COVID-19-associated pulmonary aspergillosis (CAPA) were encountered, of whom 2 died. Both deaths occurred in patients with pre-existing chronic lung disease. Two patients (11%) were diagnosed with low-level cytomegalovirus viremia, not requiring treatment. One death in a frail elderly patient was attributed to aspiration and upper gastrointestinal hemorrhage following recovery to room air oxygenation after prolonged mechanical ventilation. The deaths on study did not correlate with the improvements with oxygenation as specified in the primary endpoint (Table 1), but with late-emerging events during hospitalization as described.

Discussion:

Notwithstanding the uncontrolled nature of these observations, the clinical and translational outcomes following infliximab-abda administration are consistent with the hypothesis that TNF α is a major regulator of the adverse cytokine signature and pathobiology of severe and critical COVID-19 respiratory failure. One of the most striking outcomes was the rapid and sustained decline in the markedly elevated levels of the T-cell chemokine IP-10, which along with CXCL-9, is potentially generated by aberrantly amplified synergy between IFN- γ and TNF α as previously proposed from preclinical modeling⁷, and which has strongly correlated with adverse outcomes.⁸ IP-10 has been mechanistically implicated in the pathogenesis of adult respiratory distress syndrome (ARDS)¹⁷ and elevations of IP-10 in COVID-19 may predict the duration of

mechanical ventilation.¹⁸ Our pilot data integrated with the mechanistic studies from preclinical models, predict that TNF α -antagonist therapy, specifically infliximab-abda, may rapidly control IP-10 and associated pathological inflammatory signaling. Rapid resolution of lymphopenia in our study may reflect the coordinate drop in IP-10 and CXCL-9 which drive tissue redistribution of activated and/or exhausted T-lymphocytes via CXCR3 receptors.^{7,19} Upregulation of CXCR3 ligands in the lung microenvironment may similarly drive peripheral depletion of CXCR3+ monocytes with induction of macrophage differentiation, which additionally sustain and amplify the inflammatory loop.²⁰⁻²² Increasing monocyte counts following infliximab-abda therapy may also reflect reversal of this process.

The study was conducted during a time in which the standards of care among hospitalized patients evolved to integrate remdesivir and dexamethasone, which nearly all patients received prior to infliximab-abda administration. Although clinicopathological outcomes arguably reflect the combination of these agents, in addition to convalescent plasma and supportive antimicrobial therapies, patients improving on standard therapy were not sanctioned for the study by infectious disease consultation. Furthermore, one patient with rapid clinical response prior to discharge did not receive prior remdesivir or glucocorticoid therapy. The cytokine profile following infliximab-abda therapy in this patient exemplifies the rapid and sustained reductions from markedly elevated baseline values of IP-10, IL-6, IL-10, CXCL-9 and TNF α (Supplemental Figure 2) seen in the majority of patients, demonstrating that the clinicopathological outcome can be independent of steroid therapy. In vitro models demonstrated the lack of impact of glucocorticoids on IP-10 and CXCL-9 secretion secondary to IFN γ and TNF α .⁷ This suggests that TNF α -blockade may represent a therapeutic strategy that could offer more precise and durable control of the hyperinflammatory cytokine signature of COVID-19 than the broad-

spectrum anti-inflammatory effects of steroid therapy. Furthermore, IL-6 could not induce IP-10 and CXCL-9 secretion⁷ which may also infer a limit to the effectiveness of IL-6-directed therapies in controlling the broader hyperinflammatory picture of serious COVID-19 illness. Importantly, serial cytokine profiling from steroid and IL-6-directed randomized clinical trials have not been reported to allow formal assessment of these points.²³⁻²⁵ The high rate of clinical recovery and the cytokine profiling suggests that dual TNF α and IFN- γ targeting, which has been proposed based on preclinical modeling of lethal COVID-19,¹ may not be necessary. The attenuated yet elevated levels of CXCL-9 contrasted with uniformly diminished IP-10 levels at Day 14 may reflect restoration of physiological IFN- γ -mediated immunosurveillance, rather than persistent pathological signaling.^{7,19}

In contrast to the lymphopenic subgroup, a strong association between declines in IP-10 and IL12p40 (and not IL12p70) was suggested among the non-lymphopenic patients. IL-12 directs proliferation of activated T lymphocytes towards a Th1 phenotype. The heterodimeric molecule IL-12p70, equates with IL-12 biological activity, whereas IL-12p40 may antagonize IL-12 and inhibit cytotoxic T lymphocyte generation²⁶. Increased IL-12 levels derived from macrophages and dendritic cells contribute to the heterogeneity of cytokine storms²⁷ and restoration of physiological IL12p40:IL-12p70 ratios may recover T-cell function.

Another noteworthy finding was the early and sustained decline in IL-27 (Figure 2) which has been co-implicated with TNF α in association with disease severity among older patients (>60 yrs), but in a cytokine network distinct from TNF α .¹⁶ IL-27 may drive an IFN- γ /TNF α -independent program of immune exhaustion, via potent induction of Tim-3 and IL-10²⁸. In keeping with this potential mechanism of treatment resistance to TNF α -antagonists, two of four

patients who died were evaluable with cytokine assays at Day 14; both had rising levels of IL-10, one with a rising IL-27 (Figure 3).

The frequency and spectrum of secondary infections observed in this study are readily comparable to those observed among a mechanically ventilated population with COVID-19 respiratory failure with similar indices of disease severity.^{29,30} Nevertheless, this requires additional scrutiny in randomized studies of TNF-antagonists, with particular caution among lymphopenic patients on mechanical ventilation with pre-existing lung disease and/or multiple comorbid factors such as diabetes or prolonged/high-doses of steroids.^{31,32} Herpes simplex reactivation has been associated with prolonged mechanical ventilation and may be routinely underdiagnosed.^{30,33} Similarly, estimates of CAPA in COVID-19 has varied widely, up to 35% of patients with ARDS.³¹ Unfortunately, autopsy permission was granted in only one of three infection-related deaths on study.

A placebo-controlled randomized clinical trial conducted by the National Institutes of Health (ACTIV-1, NCT04593940) features eligibility criteria and a treatment plan similar to this study, integrating an infliximab arm combined with remdesivir, and permitting dexamethasone and convalescent plasma. The principal endpoint of ACTIV-1 is an improvement in time to recovery within 29 days with mortality as a secondary endpoint. Given that dexamethasone is likely to be widely employed in both control and experimental arms, whether TNF α -antagonist monotherapy will offer greater precision, clinical efficacy and safety over dexamethasone or other cytokine-directed therapeutics in severe and critical COVID-19 respiratory failure may remain an open question. While serial cytokine assays tethered to cellular markers of immune exhaustion will shed additional light into disease heterogeneity, response and resistance to TNF α -antagonists, the

importance of survival as the optimal principal endpoint of adequately powered trials has been emphasized.²⁵

Author contributions: Hilal Hachem, supported trial design, grant application and study accrual; Amandeep Godara, supported trial design, grant application, study accrual and set up translational cytokine assays, Courtney Schroeder, supported trial design, study accrual, data analysis and reporting, Daniel Fein, supported study accrual, data analysis and reporting, Hashim Mann supported study accrual, data analysis and reporting, Christian Lawlor supported trial design, study accrual, managed translational specimens and data quality, Jill Marshall supported study accrual, processing of translational specimens, and data management, Andreas Klein supported trial design, grant application and study reporting, Debra Poutsika supported trial design, grant application and study reporting, Janis Breeze assisted with statistical design and reporting, Raghav Joshi supported data analysis and study reporting, Paul Mathew conceived and designed the study, prepared the grant application, managed the study group and reported the results. There were no conflicts of interest identified among all authors.

Acknowledgements: Supported by the National Center for Advancing Translational Sciences, National Institutes of Health, Award Number UL1TR002544. The content is solely the responsibility of the authors and does not necessarily represent the official views of the NIH. The administrative support of Ms Vidya Iyer and the multidisciplinary clinical teams involved in the care of patients on the study is acknowledged.

REFERENCES:

1. Karki R, Sharma BR, Tuladhar S, et al. Synergism of TNF-alpha and IFN-gamma Triggers Inflammatory Cell Death, Tissue Damage, and Mortality in SARS-CoV-2 Infection and Cytokine Shock Syndromes. *Cell* 2021;184:149-68 e17.
2. Feldmann M, Maini RN, Woody JN, et al. Trials of anti-tumour necrosis factor therapy for COVID-19 are urgently needed. *The Lancet* 2020;395:1407-9.
3. Huang C, Wang Y, Li X, et al. Clinical features of patients infected with 2019 novel coronavirus in Wuhan, China. *The Lancet* 2020;395:497-506.
4. Lin Z, Long F, Yang Y, Chen X, Xu L, Yang M. Serum ferritin as an independent risk factor for severity in COVID-19 patients. *J Infect* 2020:S0163-4453(20)30434-5.
5. Del Valle DM, Kim-Schulze S, Huang HH, et al. An inflammatory cytokine signature predicts COVID-19 severity and survival. *Nat Med* 2020; 26:1636-1643.
6. Diao B, Wang C, Tan Y, et al. Reduction and Functional Exhaustion of T Cells in Patients With Coronavirus Disease 2019 (COVID-19). *Frontiers in immunology* 2020;11:827-.
7. Sauty A, Dziejman M, Taha R, et al. The T cell-specific CXC chemokines IP-10, Mig, and I-TAC are expressed by activated human bronchial epithelial cells. *Journal of immunology (Baltimore, Md : 1950)* 1999;162:3549-58.
8. Laing AG, Lorenc A, del Molino del Barrio I, et al. A dynamic COVID-19 immune signature includes associations with poor prognosis. *Nature Medicine* 2020; 26:1623-1635.
9. Baxter AE, Kaufmann DE. Tumor-necrosis factor is a master of T cell exhaustion. *Nature Immunology* 2016;17:476-8.
10. Shi X, Zhou W, Huang H, et al. Inhibition of the inflammatory cytokine tumor necrosis factor-alpha with etanercept provides protection against lethal H1N1 influenza infection in mice. *Critical Care* 2013;17:R301.
11. Koehler P, Bassetti M, Chakrabarti A, et al. Defining and managing COVID-19-associated pulmonary aspergillosis: the 2020 ECMM/ISHAM consensus criteria for research and clinical guidance. *The Lancet Infectious Diseases* (online, [https://doi.org/10.1016/S1473-3099\(20\)30847-1](https://doi.org/10.1016/S1473-3099(20)30847-1), Dec 20, 2020).
12. Awasthi S, Wagner T, Venkatakrishnan A, et al. Plasma IL-6 Levels following Corticosteroid Therapy as an Indicator of ICU Length of Stay in Critically ill COVID-19 Patients. *medRxiv* 2020:2020.07.02.20144733.
13. Zhang J, Hao Y, Ou W, et al. Serum interleukin-6 is an indicator for severity in 901 patients with SARS-CoV-2 infection: a cohort study. *Journal of Translational Medicine* 2020;18:406.
14. Han H, Ma Q, Li C, et al. Profiling serum cytokines in COVID-19 patients reveals IL-6 and IL-10 are disease severity predictors. *Emerging Microbes & Infections* 2020;9:1123-30.
15. Yang Y, Shen C, Li J, et al. Plasma IP-10 and MCP-3 levels are highly associated with disease severity and predict the progression of COVID-19. *J Allergy Clin Immunol* 2020;146:119-27.e4.

16. Angioni R, Sánchez-Rodríguez R, Munari F, et al. Age-severity matched cytokine profiling reveals specific signatures in Covid-19 patients. *Cell Death & Disease* 2020;11:957.
17. Lang S, Li L, Wang X, et al. CXCL10/IP-10 Neutralization Can Ameliorate Lipopolysaccharide-Induced Acute Respiratory Distress Syndrome in Rats. *PloS one* 2017;12:e0169100-e.
18. Blot M, Jacquier M, Aho Glele L-S, et al. CXCL10 could drive longer duration of mechanical ventilation during COVID-19 ARDS. *Critical Care* 2020;24:632.
19. Groom JR, Luster AD. CXCR3 ligands: redundant, collaborative and antagonistic functions. *Immunol Cell Biol* 2011;89:207-15.
20. Coperchini F, Chiovato L, Rotondi M. Interleukin-6, CXCL10 and Infiltrating Macrophages in COVID-19-Related Cytokine Storm: Not One for All But All for One! *Frontiers in immunology* 2021;12.
21. Grant RA, Morales-Nebreda L, Markov NS, et al. Circuits between infected macrophages and T cells in SARS-CoV-2 pneumonia. *Nature* 2021;590:635-41.
22. Zhang F, Mears JR, Shakib L, et al. IFN- γ and TNF- α drive a CXCL10+ CCL2+ macrophage phenotype expanded in severe COVID-19 lungs and inflammatory diseases with tissue inflammation. *Genome Medicine* 2021;13:64.
23. Dexamethasone in Hospitalized Patients with Covid-19. *New England Journal of Medicine* 2020;384:693-704.
24. Gordon AC, Mouncey PR, Al-Beidh F, et al. Interleukin-6 Receptor Antagonists in Critically Ill Patients with Covid-19 – Preliminary report. medRxiv 2021:2021.01.07.21249390.
25. Lescure F-X, Honda H, Fowler RA, et al. Sarilumab in patients admitted to hospital with severe or critical COVID-19: a randomised, double-blind, placebo-controlled, phase 3 trial. *The Lancet Respiratory Medicine* 2021;9:522-32.
26. Mattner F, Fischer S, Guckes S, et al. The interleukin-12 subunit p40 specifically inhibits effects of the interleukin-12 heterodimer. *Eur J Immunol* 1993;23:2202-8.
27. Mangalmurti N, Hunter CA. Cytokine Storms: Understanding COVID-19. *Immunity* 2020;53:19-25.
28. Zhu C, Sakuishi K, Xiao S, et al. An IL-27/NFIL3 signalling axis drives Tim-3 and IL-10 expression and T-cell dysfunction. *Nat Commun* 2015;6:6072.
29. Suarez-de-la-Rica A, Serrano P, De-la-Oliva R, et al. Secondary infections in mechanically ventilated patients with COVID-19: An overlooked matter? *Rev Esp Quimioter* 2021 (online:3/26/21).
30. Maes M, Higginson E, Pereira-Dias J, et al. Ventilator-associated pneumonia in critically ill patients with COVID-19. *Critical Care* 2021;25:25.
31. Arastehfar A, Carvalho A, van de Veerdonk FL, et al. COVID-19 Associated Pulmonary Aspergillosis (CAPA)-From Immunology to Treatment. *J Fungi (Basel)* 2020;6:91.
32. Ripa M, Galli L, Poli A, et al. Secondary infections in patients hospitalized with COVID-19: incidence and predictive factors. *Clin Microbiol Infect* 2021;27:451-7.
33. Le Balc'h P, Pinceaux K, Pronier C, Seguin P, Tadié J-M, Reizine F. Herpes simplex virus and cytomegalovirus reactivations among severe COVID-19 patients. *Critical Care* 2020;24:530.

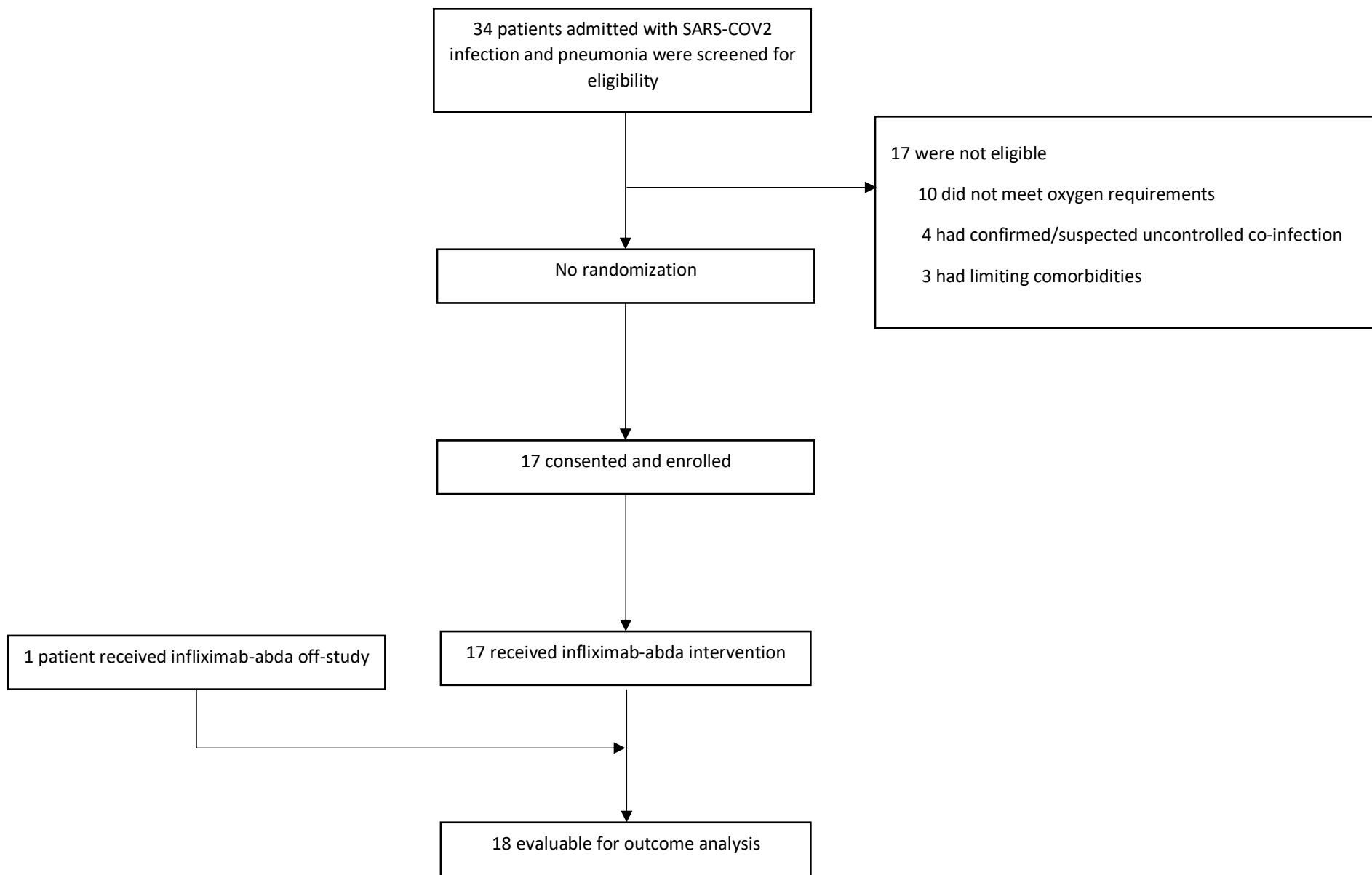


Figure 1. Consort diagram. Hospitalized patients with SARS-COV2 infection and pneumonia that were referred to the infliximab-abda study team for evaluation

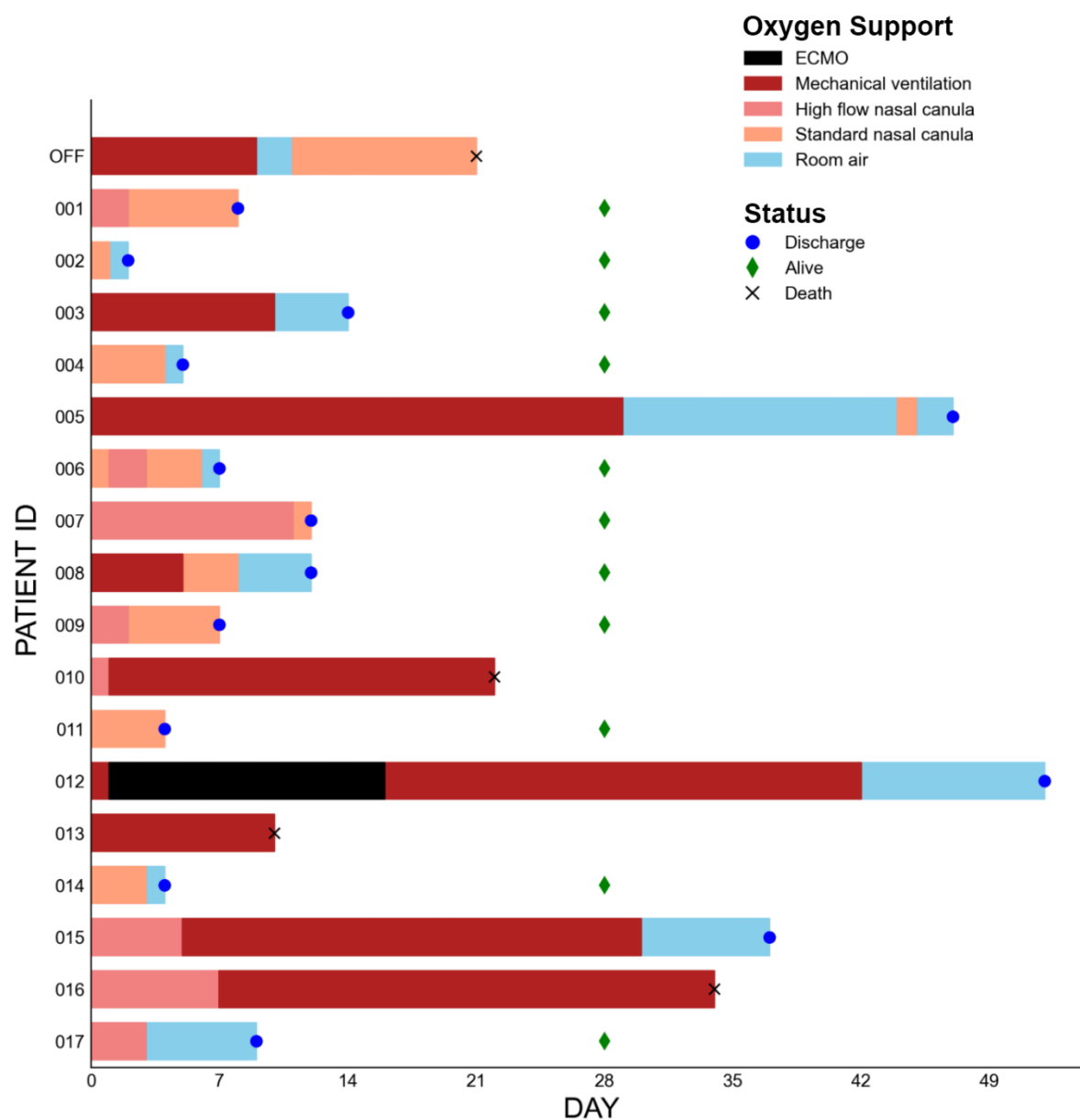


Figure 2. Changes in oxygen support status following infliximab-abda treatment. Colored bars indicate the maximal level of oxygen support for each individual following treatment with infliximab-abda. The status of the patient at last follow-up (discharged, alive or dead) is indicated. ECMO: extracorporeal membrane oxygenation

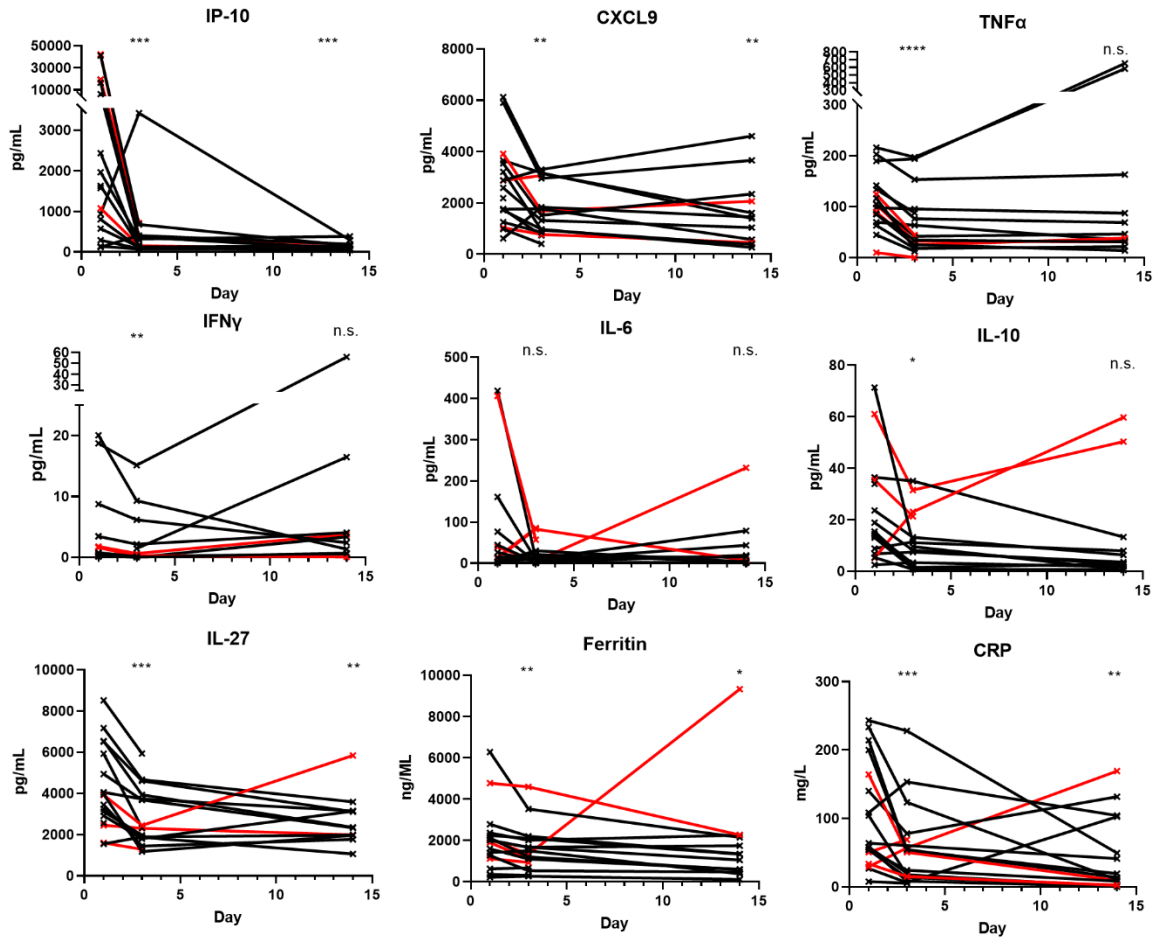


Figure 3. Decline in key cytokines and inflammatory markers following infliximab-abda therapy.

Values from individuals are connected with solid lines, with deceased individuals indicated in red.

Statistics: n=18, paired ratio t-test compared to baseline; *: P < 0.05, **: P < 0.01, ***: P < 0.001, ****: P < 0.0001, n.s.: not significant.

	TMC- OFF	TMC- 001	TMC- 002	TMC- 003	TMC- 004	TMC- 005	TMC- 006	TMC- 007	TMC- 008	TMC- 009	TMC- 010	TMC- 011	TMC- 012	TMC- 013	TMC- 014	TMC- 015	TMC- 016	TMC- 017
Age (range, years)	>60	>60	21-40	>60	41-60	>60	41-60	>60	41-60	>60	>60	41-60	>60	>60	41-60	41-60	>60	41-60
Sex	Female	Male	Male	Male	Male	Male	Female	Male	Male	Male	Male	Female	Male	Male	Female	Male	Male	Male
Race or ethnic group minority (Yes/No)	Yes	Yes	No	Yes	Yes	No	Yes	No	Yes	Yes	Yes	No	Yes	No	Yes	Yes	No	Yes
Charlson Comorbidity Index	6	6	0	4	1	3	0	3	1	2	3	1	9	4	2	2	5	2
Baseline Laboratory Values																		
Lymphocyte Count (K/uL)	0.8	0.8	1.4	0.7	1.3	0.2	0.4	0.4	0.5	0.9	0.7	0.8	1	1.2	0.4	0.5	0.7	1
LDH (IU/L)	503	372	544	403	375	313	431	493	415	321	613	490	595	835	313	361	599	339
Ferritin (ng/mL)	4773	1407	2244	1598	1273	2013	352	2128	343	6279	2063	2008	2782	1898	221	2369	1122	626
D-dimer (ng/mL)	1969	710	264	420	183	353	343	267	491	<150	485	998	2199	531	176	194	843	<150
CRP (mg/L)	33.6	243.2	64.1	200.1	54.4	108.6	233.6	104.3	58.4	57.9	164.4	54.3	140.3	29.7	214.3	26.9	50.7	7.87
Vasopressor support	Yes	No	No	Yes	No	Yes	No	No	No	No	No	No	No	Yes	No	No	No	No
Baseline SpO2/FiO2	230	188	332	111	214	145	261	209	196	182	134	271	110	93	336	220	243	139
Oxygenation Support*																		
Time of enrollment	MV	HFNC	NC	MV	NC	MV	HFNC	HFNC	MV	HFNC	MV	HFNC	ECMO	MV	NC	HFNC	HFNC	HFNC
Maximum support	MV	HFNC	NC	MV	NC	MV	HFNC	HFNC	MV	HFNC	MV	HFNC	ECMO	MV	NC	MV	MV	HFNC
Discharge or death	NC	RA	RA	RA	RA	RA†	RA	NC	RA	NC	MV	NC	RA†	MV	RA	RA†	MV	RA
Symptom Onset to infliximab-abda (days)	29	15	12	13	5	27	5	9	10	10	7	8	10	12	11	8	20	12
Admission to Infliximab-abda (days)	6	3	5	1	3	7	2	2	2	2	0	1	2	3	1	2	1	5
Hospital duration following infliximab-abda (days)	21	8	1	14	5	47	7	12	12	7	22	4	52	10	4	37	34	9
Primary Endpoint Met (Day met)	Yes (12)	Yes (3)	Yes (1)	Yes (3)	Yes (3)	Yes (3)	Yes (6)	No	Yes (6)	Yes (3)	Yes (6)	Yes (5)	Yes (4)	Yes (2)	Yes (4)	No	Yes (12)	Yes (4)
Secondary infections	Yes	No	No	Yes	No	Yes	No	No	No	No	Yes	No	Yes	Yes	No	Yes	Yes	No
Survival to discharge	No	Yes	Yes	Yes	Yes	Yes	Yes	Yes	Yes	Yes	No	Yes	Yes	No	Yes	Yes‡	No	Yes

*Within 24 hours of trial enrollment; †Via tracheostomy; ‡Ventilated at day 28

RA- Room air; NC- Nasal Cannula; HFNC- High Flow Nasal Cannula; MV- mechanical ventilator; ECMO- Extracorporeal membrane oxygenation