

1 Case Study: End User Development of an Agent-based Model of  
2 Malaria Transmission to Support the Design of Late-Life-Acting  
3 Insecticides for the Control of Malaria Transmission and Delay  
4 of the Evolution of Insecticide Resistance

5  
6 **Jacob H Heintzelman<sup>1,2</sup>, Gregory R Madey<sup>1</sup>**

7 <sup>1</sup> Department of Computer Science and Engineering, University of Notre Dame,  
8 Notre Dame, Indiana, United States

9 <sup>2</sup> Fairbanks School of Public Health, Indiana University Purdue University  
10 Indianapolis, Indianapolis, Indiana, United States

11  
12  
13  
14  
15

**Correspondence:** [jacobhh8@outlook.com](mailto:jacobhh8@outlook.com)

16 **Keywords:** end-user development, malaria, end-user programming, modeling,  
17 simulation, NetLogo, insecticide resistance, end user development, agent-based  
18 modeling, malaria transmission, disease transmission, infectious disease  
19 modeling, mosquito vectors, biopesticide, fungal insecticide, individual-based  
20 modeling

21  
22  
23  
24  
25  
26  
27  
28  
29  
30

## 31 **Abstract**

32 We describe an end-user developed agent-based simulation of malaria transmission. The  
33 simulation's development is a case study demonstrating an approach for non-technical  
34 investigators to easily develop useful simulations of complex public health problems. We focused  
35 on malaria transmission, a major global public health problem, and insecticide resistance (IR), a  
36 major problem affecting malaria control. Insecticides are used to reduce transmission of malaria  
37 caused by the *Plasmodium* parasite that is spread by the *Anopheles* mosquito. However, the  
38 emergence and spread of IR in a mosquito population can diminish the insecticide's effectiveness.  
39 IR results from mutations that produce behavioral changes or biochemical changes (such as  
40 detoxification enhancement, target site alterations) in the mosquito population that provide  
41 resistance to the insecticide. Evolutionary selection for the IR traits reduces the effectiveness of an  
42 insecticide favoring the resistant mosquito population. It has been suggested that biopesticides,  
43 and specifically those that are Late Life Acting (LLA), could address this problem. LLA  
44 insecticides exploit *Plasmodium's* approximate 10-day extrinsic incubation period in the mosquito  
45 vector, a delay that limits malaria transmission to older infected mosquitoes. Since the proposed  
46 LLA insecticide delays mosquito death until after the exposed mosquito has a chance to produce  
47 several broods of offspring, reducing the selective pressure for resistance, it delays IR and gives  
48 the insecticide longer effectivity. Such insecticides are designed to slow the evolution of IR thus  
49 maintaining their effectiveness for malaria control. For the IR problem, the simulation shows that  
50 an LLA insecticide could work as intended, but its operational characteristics are critical, primarily  
51 the mean-time-to-death after exposure and the associated standard deviation. We also demonstrate  
52 the simulation's extensibility to other malaria control measures, including larval source control

53 and policies to mitigate the spread of IR. The simulation was developed using NetLogo as a case  
54 study of a simple but useful approach to public health research.

## 55 **Introduction**

56 It has recently been argued that modeling and simulation can be useful tools for public health  
57 research and innovation, but have yet to be used to their potential [1]. One recommended solution  
58 to this challenge is to increase the participation of the interested parties in the modeling and  
59 simulation development process, including the stakeholders, scientists, researchers and health  
60 professionals [1, 2]. Modeling and simulation can use many approaches, including differential  
61 equation-based or system dynamics approaches, statistical or data science approaches, and agent-  
62 based approaches. This study used the latter, the agent-based modeling (ABM) approach, which is  
63 highly suitable for end-user participation in the simulation process [3]. As faster computers and  
64 more intuitive programming tools become increasingly available, and typical users become more  
65 comfortable with computing, such end-users can become more involved as the developers of  
66 simulations [4], including agent-based simulations [5]. We describe in this paper a case study of  
67 an end-user developed malaria transmission simulation, and demonstrate its usefulness for  
68 evaluating a potential solution to a major challenge for malaria control.

69 The use of chemical insecticides to control malaria vectors goes back at least to the 1940s  
70 and reported loss of their effectiveness caused by the vectors' insecticide resistance (IR) goes back  
71 to the 1970's [6, 7]. Malaria, a disease caused by the parasitic protist *Plasmodium*, is one of the  
72 major causes of death globally, especially in developing countries. There were 409,000 deaths and  
73 229 million infections across the world from the disease in 2019 [8]. Mosquito vectors transmit  
74 malaria by taking a blood meal from an infectious human and, after an extrinsic incubation period  
75 (EIP), biting a susceptible human, releasing the parasite into their bloodstream. Transmission

76 control can use chemical interventions to kill the mosquitoes that transmit the disease. These  
77 interventions primarily take the forms of insecticide treated bed-nets, which provide both a  
78 physical barrier and insecticide killing, and indoor residual spraying, which consists of an  
79 insecticide application inside human habitations. The efficacy of these interventions can be seen  
80 in the 27 countries which have improved to less than 100 yearly cases of malaria since 2010 [8].

81 However, these chemical interventions are losing their effectiveness due to the evolution  
82 of IR in the mosquitoes causing them to be less affected by the current chemicals [7, 9, 10]. Once  
83 IR emerges in a vector population, the insecticide interventions become effective at reducing the  
84 mosquito population and controlling malaria [11, 12]. To combat this loss of effectiveness, new  
85 interventions are proposed to replace those that are no longer effective. These interventions can be  
86 evaluated using mathematical and computer modeling to observe their effects before such  
87 interventions are designed, developed and produced [13-17]. Such model-based evaluations can  
88 help specify performance attributes for the proposed interventions before they enter more costly  
89 development and field evaluation. However, many computer models are complex and hard for  
90 anyone other than specialists to use and understand. They also can take a long time to develop or  
91 adapt, which can reduce their utility during the insecticide's development. While there have been  
92 many agent-based malaria transmission models described in the literature [13, 15, 18-26], most  
93 are not free-open source, and experience shows that most users of the notable free-open source  
94 models actually reside in the organization that sponsored their development [13, 26].

95 We identify multiple challenges for the users of modeling and simulation of malaria  
96 transmission, including: 1) requirement of either strong mathematical or computer programming  
97 skills, 2) the traditional complexity of modeling and simulation, 3) long development time, 4) lack

98 of ease of use and extensibility, 5) lack of transparency of assumptions and limitations, and often  
99 6) the need for high performance computing resources.

100 One approach to address these six challenges is to develop models employing an easy-to-  
101 use ABM tool. These tools can simulate a sufficient level of needed problem complexity, while  
102 remaining simple enough to develop in a shorter time by a wider range of researchers compared  
103 to other modeling methods. These ABM tools enable relatively easy development of useful  
104 simulations of problems of interest and are accessible for use by non-technical investigators. Many  
105 reviews of these ABM tools, also called ABM platforms, are available [27-31]. Many are free-  
106 open source, require lower levels of development effort, and can be used for a wide range of  
107 applications [27].

108 This paper describes an ABM of malaria transmission developed using the popular  
109 simulation development tool NetLogo [32] demonstrating an approach for non-technical  
110 investigators to develop useful simulations of many complex problems. As a demonstration, we  
111 investigate a proposed insecticide that uses a novel mechanism to control the mosquito population  
112 and hence malaria transmission, while delaying the evolution of resistance to that intervention.  
113 The proposed intervention is a late-life-acting (LLA) insecticide [33, 34]. This intervention targets  
114 the problem of IR by being more selective in the timing between exposure and mortality than  
115 traditional insecticides for two key reasons. First, the *Plasmodium* parasite has an approximately  
116 8 to 12-day EIP (the phase of the parasite's life-cycle within the mosquito) meaning that the  
117 infectious mosquito does not need to die until at least 8-days after it has taken a blood-meal from  
118 an infectious person to block transmission of the disease. Second, this extra time also allows the  
119 mosquito to complete several gonotrophic cycles (i.e., the cycle of feeding, resting, and  
120 ovipositing), producing offspring with its genotype before they die, thus reducing the selective

121 pressure on the resistant allele. Most insecticides kill the insect on or shortly after contact – referred  
122 to as Instant Acting (IA) – meaning that only the resistant insects are able to reproduce and pass  
123 on their genotype when exposed to the IA insecticide. An LLA insecticide slows the spread of IR  
124 by allowing the insecticide-susceptible mosquitoes to be more competitive at passing on their  
125 insecticide-susceptible genes, resulting in a longer-lasting insecticide-susceptible population.

126 One type of proposed LLA insecticide is based on using an entomopathogenic fungus – a  
127 biopesticide – which could provide the resistance delaying benefits of an LLA insecticide [33-40].  
128 The application of these fungi has been evaluated in several field tests which have shown that the  
129 fungi can be applied effectively and work to kill mosquitoes in the field but have never been tried  
130 on a large enough scale to test their effect on malaria transmission [39, 41]. Mosquitoes are  
131 frequently in natural contact with fungi and do have ways to adapt to them in nature. Fungi can  
132 enter the mosquito from several points: ingestion, cutaneous openings, and forced introduction  
133 [37, 38]. Although their innate immune system is not capable of adapting to specific invaders [42],  
134 it is assumed that a mutation in the mosquitoes' genome could confer a boosted immune system,  
135 causing the mosquito to become resistant to the fungal insecticide.

136 However, some potential drawbacks with LLA insecticides have been identified. The  
137 female mosquito may not be exposed to the insecticide until her second or third gonotrophic cycle  
138 so that she may still live long enough to cause an infectious bite. Even if the mosquito is exposed  
139 to the LLA insecticide during its first gonotrophic cycle, there may be a wide variability in the  
140 timing of the mosquito's death, possibly resulting in reduced malaria control or a shortened delay  
141 of the emergence of IR. To examine such problems, we constructed an ABM of the malaria  
142 transmission cycle. We then applied this model by using it to perform a series of tests on

143 hypothetical properties of an LLA insecticide [34]. This study utilized the simplicity, ease and  
144 speed of development of the NetLogo tool to quickly create a useful model.

145         The model presented in this paper is agent-based (sometimes called individual-based)  
146 because it explicitly represents in the simulation important elements of the modeled system (the  
147 agents or individual actors in the system). ABM is an alternative to mathematical modeling, which  
148 often models population dynamics using differential equations. ABM can simulate the actions and  
149 events in the life-cycle of each distinct individual agent, including its interactions with other  
150 agents, to simulate more detailed and representative behavior of the modeled system. In the model  
151 there are six types of agents: 1) the adult female mosquito agents, 2) the brood agents (representing  
152 the aquatic stages of mosquito cohorts), 3) the susceptible or exposed (but not yet infectious)  
153 human agents, 4) infectious human agents, 5) recovered human agents, and 6) the patch agents  
154 (the square spaces that make up the simulated world of the simulation). Each of the agents can  
155 have its own unique attributes, individual behaviors, and distinct interactions with the other agents.  
156 The malaria parasite was modeled as an attribute possessed by the mosquitoes and humans and not  
157 as an explicit agent.

158         This paper describes our results for two interrelated objectives: 1) a case study of how end  
159 users can develop agent-based simulation to be used by public health researchers to support their  
160 investigations, and 2) discover through simulation insights into the potential utility of LLA  
161 insecticides as a proposed strategy for addressing IR. The challenge of IR is not limited to malaria  
162 control and insights presented here may be applicable to other IR problem areas (e.g., other  
163 arthropod transmitted diseases and agricultural applications). The complete EMMIT (Extendible  
164 Model for Malaria Intervention Testing) program presented in this paper is included as a  
165 supporting information file and includes source code and documentation, permitting modifications

166 and extension to other malaria control research topics. Additional supporting information files  
167 include 1) formal documentation using the ODD standard, 2) a table of simulation parameters, and  
168 3) a compilation of calibration, verification, and validation experiments conducted on the model.  
169 The following sections present a description of a model of malaria transmission, the IA and LLA  
170 insecticide malaria control methods simulated in the model, our representation of the mosquitoes'  
171 resistance genotypes, implementation details of the EMMIT program, and results and analysis.

## 172 **Model**

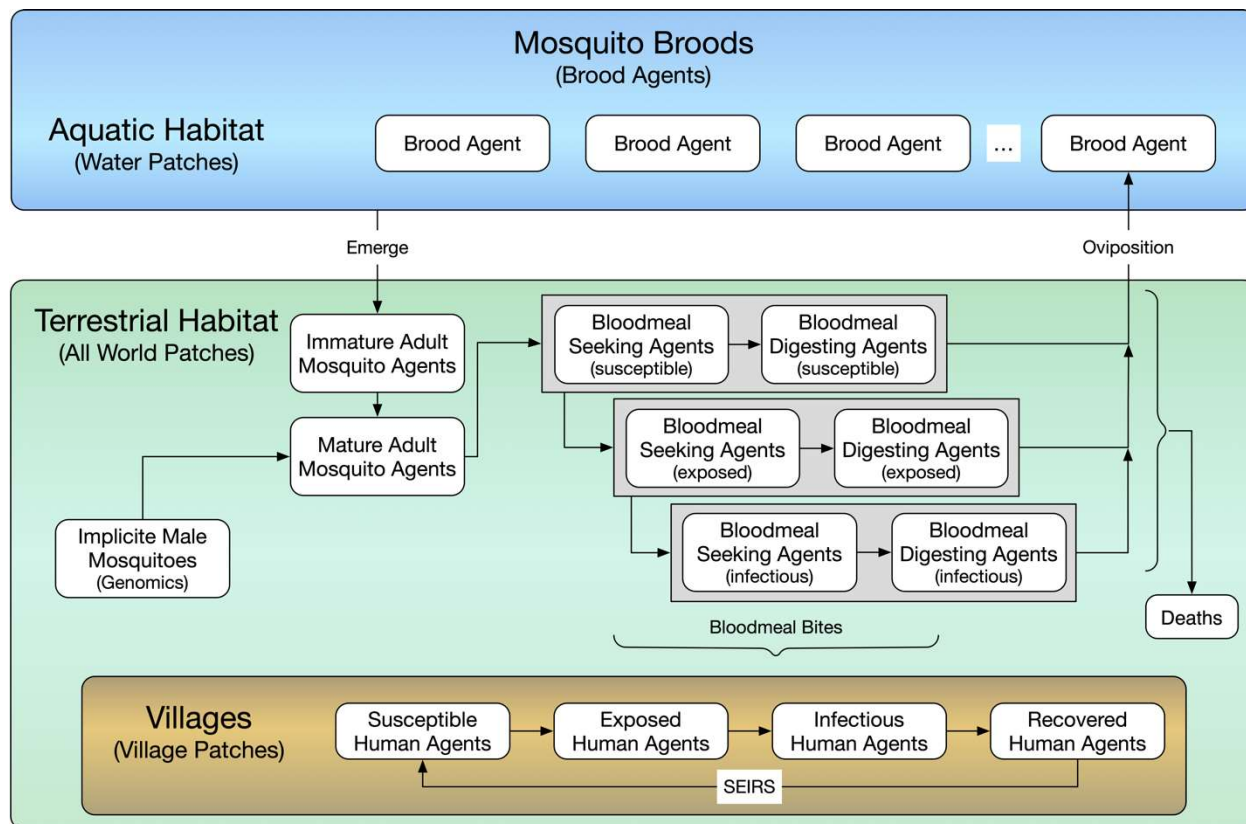
173 The EMMIT program consists of mosquito agents, brood agents, three types of human agents, a  
174 simulated world for the agents to occupy consisting of discrete patches, villages, water patches  
175 representing breeding sites, and interventions designed to reduce the number of mosquito agents.  
176 The simulated world is conceptually divided into an aquatic habit (where the broods reside) and a  
177 terrestrial habitat (where the adult mosquitoes and humans reside).

## 178 **Mosquito Agents**

179 We modeled the mosquitoes' life cycle in two phases: the aquatic phase and the adult phase. In the  
180 aquatic phase of the life cycle, one brood agent represents all of the eggs associated with an  
181 oviposition. The brood agent represents all three aquatic stages (eggs, larvae, pupae) and has a  
182 lifespan equivalent to the sum of the time spent in each stage. For each gonotrophic cycle, the  
183 mosquitoes produce one brood. When each brood agent reaches the specified age, it is replaced by  
184 15 - 50 juvenile female adult mosquito agents, representing the survivors of the aquatic life stage.  
185 These newly emerged mosquitoes move randomly for about two days, after which they are  
186 assumed to have mated, become mature female adult mosquitoes, and begin seeking a blood meal  
187 (the beginning of a gonotrophic cycle). After successfully taking a blood meal, a period of time



188 passes representing the mosquito digesting the meal and the preparation of a brood of eggs. This  
 189 is followed by search and selection of a water site for oviposition. After successful oviposition,  
 190 the mosquito begins a new gonotrophic cycle. In each gonotrophic cycle the mosquito may be  
 191 infected by the *Plasmodium* parasite. Male mosquitoes are not explicitly modeled as agents, but  
 192 are implicitly modeled for determining the genotype of the offspring. See Fig 1.



193

**Fig 1. Modeled mosquito life cycle and human disease cycle.**

The simulated mosquitoes begin as a brood agent in the water patches of the simulated landscape until they emerge as immature mosquito agents wandering until they mature. Once matured (about two days later), the mosquito agents are assumed to have mated and begin searching for a blood meal. Once they take a blood meal, the simulated mosquitoes begin blood digesting then begin searching for a water patch to lay their eggs. If they bite an infectious person, they become exposed and then infectious. Once the simulated mosquito finds a water patch it creates a new brood agent and resumes the blood meal search. The human agents are *susceptible* until they receive a bite from an infectious mosquito, they then enter the *exposed* state, after which they transition to the *infectious* state. After the specified time, they transition from infectious to *recovered* and then back to *susceptible*.

194

195           The adult mosquitoes in the baseline model have a simple one percent hourly chance of  
196 mortality from natural causes (predators, age, environmental hazards, etc.). Since we only modeled  
197 the hours when the mosquitoes are active in our simulation (12-hours per day), this gave the  
198 mosquitoes a slightly less than 12% daily death rate causing an exponential decline in the mosquito  
199 population age structure. See Fig 4 in the Results section.

200           Malaria dynamics in the mosquito population were implemented using the Susceptible-  
201 Exposed-Infectious model. The mosquitoes are susceptible until they take a blood meal from an  
202 infectious human (with a given probability of infection), then they entered the exposed state with  
203 an EIP of 8-12 days [34, 43, 44], after which they became infectious for the rest of their lives.

204           The mosquito agents are able to bite one of the human agents when they are on the same  
205 patch and the mosquito is not gravid. When taking a blood meal from a human agent a separate  
206 procedure determines if the human they bite is infectious, and hence if they become infected. After  
207 the bite procedures, the mosquito agent is considered gravid, begins bloodmeal digesting, and  
208 seeking a water patch for egg laying. After a burn-in period (running the simulation until it reaches  
209 equilibrium), the simulation records the total number of bites, the hourly bites, the total bites that  
210 infect humans, and the hourly bites that infect humans.

211           The mosquito agents in our model move every timestep. If the non-gravid mosquitoes are  
212 within fifty patches of the center of either of the villages they move generally (although not  
213 directly) towards the village to take a blood meal. Outside of fifty patches from the villages, the  
214 mosquitoes move randomly. The gravid mosquitoes move randomly at a constant rate until they  
215 are within four patches of an open water patch. They then move to this patch and leave a brood  
216 agent there, and begin a new gonotrophic cycle searching for another blood meal.

217  
218

## 219 **Humans Agents**

220  
221 Individual human agents all reside in one of two villages each represented in the model by a circle  
222 of patches. Human births and deaths are not modeled and the total number of human agents stays  
223 constant throughout the simulation's duration. No additional attributes are assigned, such as co-  
224 morbidities, preventative drug administration, age, sex, or pregnancy. The human agents move  
225 randomly within the village patches. Some humans move linearly in and out their village to  
226 simulate time that members of the villages spend traveling, tending to crops, and other activities  
227 outside of the village. To simulate the human disease states in our model we assumed the SEIRS  
228 (Susceptible, Exposed, Infectious, Recovered, Susceptible) disease model (see Fig 1). We modeled  
229 the SEIRS states using three types of human agents: 1) *susceptible* (which includes *exposed*), 2)  
230 *infectious*, and 3) *recovered*. The human agents cycle between these states when receiving  
231 infectious bites and after a delay. The length that the human agent spends in each state is sampled  
232 randomly from a normal distribution. In the event of a bite, if the human is *susceptible* and the  
233 mosquito is infectious, then the human becomes *exposed*. After a delay to represent the time which  
234 the parasite spends in the human liver (the exo-erythrocytic cycle) and the human blood  
235 (erythrocytic cycle), the human becomes an *infectious* agent. If the bitten human is *infectious*, the  
236 mosquito becomes exposed but not infectious until after the EIP (the sporogonic cycle) [44]. If the  
237 human is *recovered*, they can receive infectious bites, but are considered immune and do not  
238 change states. Then, after a random delay, the recovered human agents switch to the *susceptible*  
239 state where they are can receive infectious bites and become *exposed* and then *infectious* again.  
240 The mean of the time spent in the recovered and infected states is an input value which can be set  
241 in the interface.

242

## 243 **Insecticides**

244 Both LLA and IA insecticides are modeled. To model the use of the LLA insecticide, we randomly  
245 assigned patches across the villages to be treated with the insecticide with coverage percentage  
246 specified by the user. When the mosquitoes encountered these patches, they have a random chance  
247 of exposure to the insecticide. If they are exposed, they are assigned a time-to-death. This time-to-  
248 death is a normally distributed random number with adjustable mean and standard deviation used  
249 to evaluate the performance of the LLA. We evaluated multiple means from 7 to 11 days after  
250 exposure to evaluate the optimal delay time to death [37, 38]. We then evaluated multiple standard  
251 deviations to see how precise the timing of an LLA insecticide needed to be to reduce malaria  
252 transmission and simultaneously slow the spread of resistance. We modeled the effects of this LLA  
253 based on results from field tests of entomopathogenic fungi's effect on mosquitoes [37, 38]. For  
254 example, after exposure to the LLA, we modeled a decrease in the mosquito's flight speed,  
255 representing the growing burden of the fungal infection prior to death [40].

256 We also modeled an IA insecticide representative of those currently approved for use by  
257 the WHO [45]. This enabled us to calibrate our model using empirical studies conducted on these  
258 insecticides [46, 47]. This also allowed us to compare the effectiveness of approved IA insecticides  
259 to the LLA insecticide. The IA insecticide was implemented in the model in the same way as the  
260 LLA insecticide: patches of insecticide were randomly distributed around the villages and when  
261 the mosquitoes encountered them, they had a certain probability of exposure and death. The  
262 difference is that, for the IA insecticide, the mosquitoes die immediately after exposure.

263 Several variables are critical in determining the functionality of both insecticides. These  
264 include: the chance of exposure, the resistance dominance of the heterozygous genome [16, 17],  
265 the chance of death after exposure (IA), the mean and standard deviation of the kill time (LLA),

266 the fitness cost on the resistant mosquitoes, and the insecticide coverage of the village. All of these  
267 variables can be set through the interface of the program.

## 268 **Source Control Extension**

269 To demonstrate the flexibility and extensibility of the program, a simple source control feature was  
270 added to evaluate the reduction of breeding sites. When this feature is on, a variable percent of the  
271 water patches within the anulus of the village are removed to simulate the draining and removal of  
272 mosquito breeding sites near the villages. The distance that this intervention extends from the  
273 village is controlled by a slider on the user interface. The accuracy of this intervention is also  
274 controllable on the interface and can be set so that only a certain percent of patches in the  
275 intervention area are removed. The patches that become part of this intervention never become  
276 breeding sites again in the simulation. With this feature on, the number of people who leave the  
277 village is increased to simulate people going out to implement and maintain the source control  
278 measures. This extension was added with about 10 lines of code. See the S4 document for details  
279 on the results of this feature.

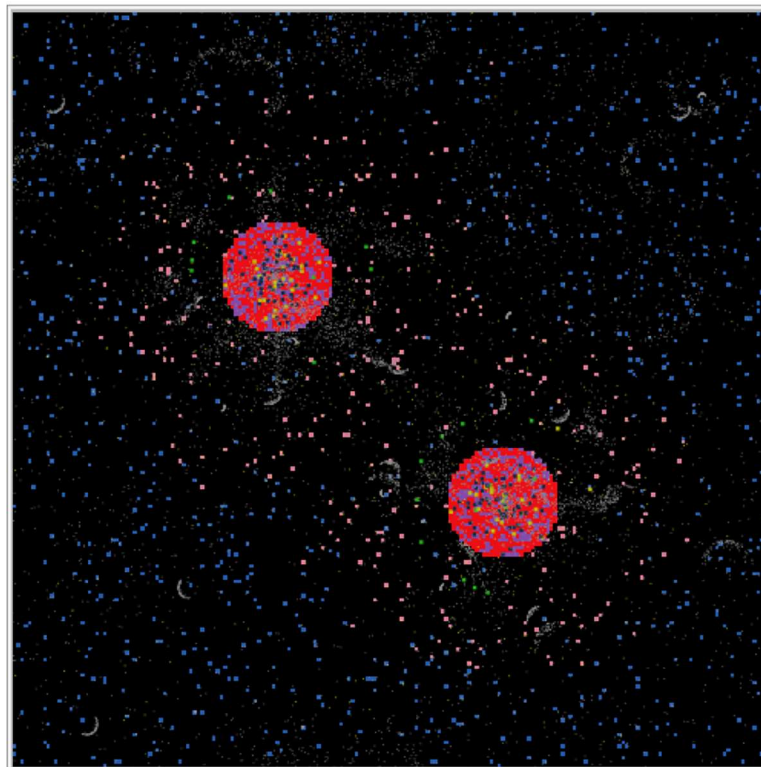
## 280 **Resistance Mitigation Policy Extension**

281 A second demonstration the extensibility of our model was a feature which evaluates an adaptive  
282 policy for the managing the use of an insecticide as IR emerges. When activated, this feature  
283 controls the amount of insecticide treated patches in the model based on how prevalent the resistant  
284 allele is in the mosquito population. As resistance to the insecticide increases, this IR mitigation  
285 policy iteratively reduces the number of treated patches until no insecticide is applied (so that the  
286 selective pressure for resistance goes down). Then, it waits for the percent of resistant mosquitoes

287 to return to a baseline level and reintroduces the insecticide at full strength. This feature relies on  
288 a high fitness cost of resistance to cause the resistant population to decrease after the insecticide is  
289 removed. This extension was added with about 35 lines of code. See the S4 document for details  
290 on the results of this feature.

## 291 **Agent Space**

292 The agent space consists of 40,401 patches arranged in a 2-dimensional 201x201 grid. This is  
293 intended to represent 100m<sup>2</sup> per patch for a simulated space of approximately 4 km<sup>2</sup>. The edges of  
294 the space wrap horizontally and vertically forming a torus. Two village areas (red) are set  
295 equidistant from the center of the space (see Fig 2). In these villages, the people move randomly.  
296 Water patches are randomly spread across the space controlled by a slider on the interface to  
297 specify their initial frequency. During the simulation, the water patch count decreased or increased  
298 seasonally with two peaks each year to simulate seasonal rainfall. Each water patch has a carrying  
299 capacity of three broods. The mosquitoes move randomly across the map unless they are within  
300 50 patches (adjustable in the interface) of one of the villages in which case they move generally  
301 towards the village until they encounter a human and take a blood meal. After the blood meal, the  
302 mosquitoes move randomly out of the village until they find a water patch. If they are within 4  
303 patches of a water patch, they move straight to the water where, and if their gonotrophic cycle is  
304 completed, they lay a brood of eggs and continue random flight.



Blue = Water Red = Village Green = Susceptible People  
Violet = LLA Insecticide Yellow = Infected People  
Orange = IA Insecticide Dark Blue = Recovered People  
Pink = Full Water Patches Grey = Mosquitoes

305

**Fig 2. NetLogo representation of the agent-space.**

Screenshot showing two villages (red), patches with insecticide treatment, aquatic breeding sites, humans and mosquitoes. The black patches are empty, not including any insecticide, humans, breeding sites or mosquitoes.

306

## 307 **Resistance**

308 The resistance to the LLA insecticide in the model was governed by two alleles giving three  
309 possible genotypes, susceptible (SS), partially resistant (SR), and resistant (RR) [16, 17]. We  
310 assumed that a single mutation was responsible for causing resistance for both of the insecticides  
311 (see Table 1). Since male mosquitoes were not explicitly modeled as agents in the program, the  
312 contribution of the male alleles to the spread of resistance was computed probabilistically based  
313 on the proportion of each genotype in the simulation. The resistant allele was introduced in the  
314 burn-in (a number of days at the beginning of a simulation run to let the model stabilize before



315 collecting data – sometimes called warm-up) and maintained at up to 2% of the population to  
316 simulate a naturally occurring mutation. The initial percent of SR mosquitoes is a changeable  
317 variable in our model but we used 2% for consistency. Since the male mosquitoes were not  
318 simulated, the female mosquitoes determine the genotype of the male they have mated with by  
319 using the percentage of each genotype in the total population as the probability that they mate with  
320 each type of male. Once this had been evaluated, it was recorded in a variable which was passed  
321 from the female to any broods she created along with her own genotype. When a brood agent  
322 transitions to adult female mosquitoes, each new mosquito's genotype is assigned using  
323 probabilities based on the genotypes of the mother and assumed father.

324  
325

**Table 1. The assumed genetic outcomes for mosquito genotype pairings.**

Offspring Genotype	Parents' Genotypes					
	SS + SS	SS + SR	SS + RR	SR + SR	SR + RR	RR + RR
SS	100%	50%	0%	25%	0%	0%
SR	0%	50%	100%	50%	50%	0%
RR	0%	0%	0%	25%	50%	100%

326 This table shows the assumed genetic outcomes of the combinations of each  
327 genotype. Each mosquito's variables include a set of two genotypes, one it  
328 expresses which was assigned when it entered the system based on its parents'  
329 genotypes, and one which it evaluates based randomly on the density of each  
330 genotype in the population. Both of these are combined to assign the genotypes of  
331 that mosquitoes' offspring.

332  
333

The model includes an option for modeling a fitness cost of resistance implemented as a  
334 reduction in flight speed and an increased larval fatality for the homozygous resistant mosquitoes.  
335 The heterozygous resistant mosquitoes are also subject to the cost of resistance in the same ways  
336 but at a lower level than the homozygous resistant mosquitoes [17, 48-50]. The cost was assigned  
337 three levels: *High Cost*, *Low Cost*, and *No Cost*. Each of these levels acted on the same variables



338 but gave them more or less extreme values. These values can easily be edited in the code by  
339 someone looking to experiment with different types of cost or resistance. These cost values were  
340 evaluated to test their effect on the spread of resistance. We used a variable called *Resistance-*  
341 *Dominance* [17] to determine how much the resistant allele was expressed for the heterozygous  
342 genotype mosquitoes. The *Resistance-Dominance* ranged from 0 to 100 with 100 meaning that the  
343 resistant allele caused the heterozygous mosquito to be completely resistant and 0 causing  
344 complete susceptibility. For values in-between 0 and 100 the value that was chosen became the  
345 chance that the mosquito was affected by the insecticide upon exposure. For example, if the  
346 *Resistance-Dominance* was set to 50, the SR mosquitoes had a 50% chance of being affected by  
347 the implemented insecticide per encounter with an insecticide treated patch.

## 348 349 **Model Implementation**

350  
351 The model is implemented as a computer simulation using NetLogo 6.2.0. The NetLogo simulation  
352 tool is open source and freely available, running on the Windows, Macintosh and Linux operating  
353 systems [32]. A complete executable copy of the EMMIT program can be found in Supporting  
354 Information File S1 Program. The ODD (Overview, Design concepts and Details) protocol is  
355 employed to provide standardized and detailed documentation of the model [51-54] supporting  
356 experimental replication of results and a basis for model adaptation and extension by others. This  
357 documentation can be found in Supporting File S2 ODD Documentation. On opening the EMMIT  
358 program file in the NetLogo tool, the user can view the *Interface\_Tab* (discussed in the next  
359 section), the *InfoTab* displaying model documentation and usage guidance, and the *Code\_Tab*  
360 displaying the actual code with detailed line-by-line comments. As implemented, the program is  
361 highly modular, consisting of 39 procedures. Setup and initialization of the program takes place in  
362 14 of those procedures and the remaining 25 procedures contain the code for execution of the

363 simulation. About 40 global variables are used to control a simulation instance, of which about 20  
364 can be set through the user interface using slider, switch and dropdown interface elements. The  
365 remaining global variables are set in the code but can be easily edited to take on different values. In  
366 the Code\_Tab the global variable declarations and procedures (i.e., the functional code, excluding  
367 program comments) total approximately only 600 lines. These program statistics suggest that this  
368 program is an example of an end-user development, user-extensible agent-based simulation of  
369 malaria transmission, but capable of providing insight into complex questions about the disease's  
370 transmission and control. A typical single simulation with an agent space consisting of 40,401  
371 patches, as many as 50,000 mosquito agents and 200 human agents, running for up to 20 years,  
372 running on a single core on a consumer-grade computer (laptop or desktop) has a wall-clock run-  
373 time of approximately 5-8 hours. Simulation experiments consisting of hundreds of parameter-  
374 sweeps were run using the Behavior Space tool in NetLogo specific variable values, including  
375 ranges of values, as a parameter sweep. Each individual simulation runs on a separate core, with  
376 multiple simulations running in parallel on all available cores of a single computer (for example,  
377 8 parallel runs on an 8-core machine). If needed, the Behavior Space tool also supports running  
378 multiple simulations on a cluster of computers. As each simulation is completed, the next one  
379 begins until all scheduled runs are completed. The output of each Behavior Space experiment is  
380 recorded to a CSV file with the specified output data from each run. A separate data tool can then  
381 be used to analyze and visualize the results.

382

## 383 **Interface and Simulations**

384

385 A screen shot of the EMMIT program's interface is shown in Fig 3. The interface of the program  
386 contains 25 input elements (sliders, switches and drop-down menus) that a user can select to set  
387 the associated 19 variable values, monitors for observing mosquito and human population values

388 during run-time, dynamic charts, and a map of the simulated world and the agents on it. For  
 389 interactive usage, a simulation is started by selecting the desired values in the input features,  
 390 pushing the *Setup* button to initialize the agents, and then pushing the *Go* button to begin the  
 391 simulation. We believe this interface is intuitive enough for most researchers to use and understand  
 392 so that it can be used in many settings.

393 When the simulation begins, it has a 1000 timestep burn-in period to initialize the  
 394 populations and then a one-year control period before the chosen intervention is applied. This  
 395 control period enables the observation of a simulated baseline, prior to the introduction of a malaria  
 396 control intervention. When running the simulation using the interactive interface, the simulation  
 397 runs until the user stops it pressing again on the *Go* button.



398 **Fig 3. NetLogo user interface.**  
 Screen shot of the EMMIT program’s interface displays user-selectable inputs specifying malaria  
 control interventions and simulation setup values, and program outputs including mosquito  
 399 statistics and human statistics.

400 Most of the simulations were run with a fixed seed for the random number generators to  
401 enable replication of results and comparison of simulations with different parameter settings. This  
402 removed variability in the simulation attributable to the starting point in the random sequence  
403 generated by the random number generator. Sensitivity analysis on different random seeds  
404 indicated that multiple runs are typically needed to properly determine the distributions of possible  
405 outcomes. More discussion on this is reported in the results section below.

## 406 **Model Parameters**

407 Where applicable, we set simulation parameter values based on values reported in the literature.  
408 See Supporting File S3 Table of Model Variables for most of these used in the model. When a  
409 range of values are reported (perhaps dependent on temperature, mosquito or parasite species, etc.,  
410 we typically modeled the uncertainty with random distributions. While most of these values are  
411 hard coded into the program, they can be easily edited in the Code\_Tab view of NetLogo. As an  
412 example, one of these is the EIP which is reported as being between eight and twelve days [34,  
413 43]. This value played an important role in the results and insights provided by our model and can  
414 be edited in the model code. As another calibration example, we were able to find WHO data to  
415 calibrate the kill rate of instant acting insecticide we simulated [12, 55]. We did test other values  
416 as well to allow for natural variation which may occur.

417  
418  
419  
420

## 421 **Results**

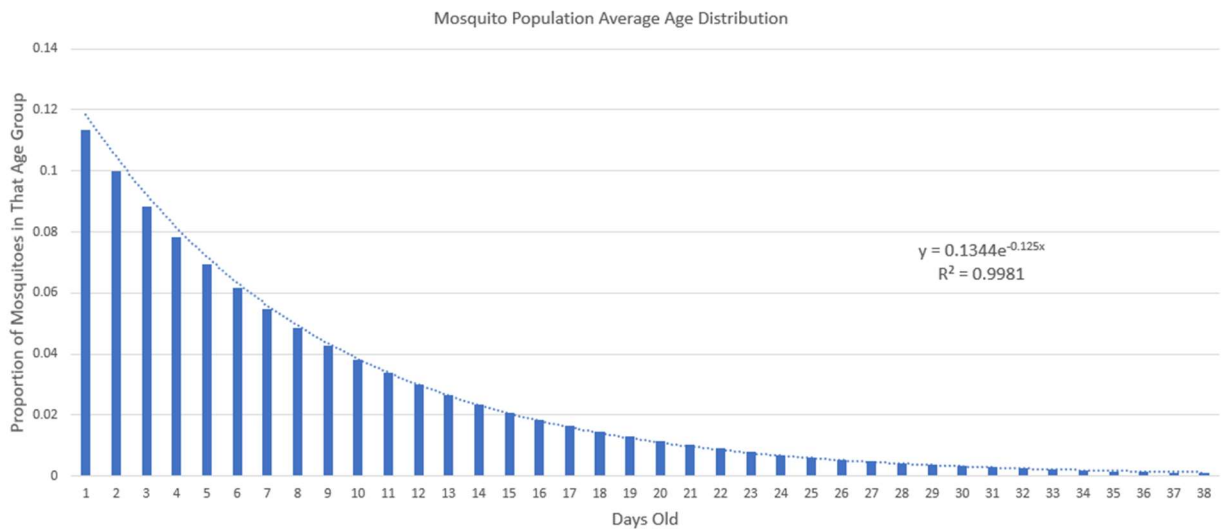
422  
423 We ran many simulations and analyzed the output with six different (but overlapping) objectives:  
424 1) calibration, 2) verification, 3) validation, 4) sensitivity analysis, 5) evaluation of the potential  
425 of LLA biopesticides for malaria control, and 6) demonstration of the model's extensibility and  
426 use of simple end-user-developed agent-based modeling to investigate important public health  
427 research questions. Objectives 1-4 served the purpose of increasing our confidence in the model  
428 and objectives 5-6 provided the two contributions of this study. We discuss and provide examples  
429 of these below.

### 430 **Calibration, Verification, and Validation**

431  
432  
433 Calibration of the model is the process of iteratively setting appropriate simulation parameters to  
434 achieve internally consistent and externally plausible outputs. For example, the simulated world is  
435 abstracted to be a toroidal grid of  $100\text{m}^2$  patches of total size of approximately  $4\text{ km}^2$ . Movement  
436 of the mosquito in the simulation is specified by patches per time-step (where a time-step is  
437 specified to be one hour). This needs to be consistent with actual flight distances over time of the  
438 mosquitoes. For example, mosquito flight distances are reported to have typical values of a few  
439 hundred meters per day, but may occasionally be long distances [56, 57]. The size of our simulated  
440 world and typical flight distances are consistent with these reported values. Likewise, the natural  
441 mortality (pre-intervention) of the mosquitoes needs to be modeled, to properly address the  
442 research question investigated in this paper, i.e., the potential ability of a late-acting bio-pesticide  
443 to delay IR while controlling malaria transmission.

444 As described in more detail earlier, we assumed an average baseline mosquito mortality of  
445 1% per hour for 12 hours per day, resulting in a daily mortality of slightly less than 12% per day

446 on average. This value is consistent with reported survival rates of a mosquito in the wild [56, 57].  
447 To calibrate this parameter value and its usage in the simulation, we recorded data from a running  
448 control simulation (no insecticide interventions) and tabulated the average age distribution of the  
449 mosquito population (see Fig 4) following the methods of Hancock, et. al. [11]. A good fit to the  
450 expected age distribution is observed demonstrating parameter calibration (also providing support  
451 for verification and validation of the simulation).



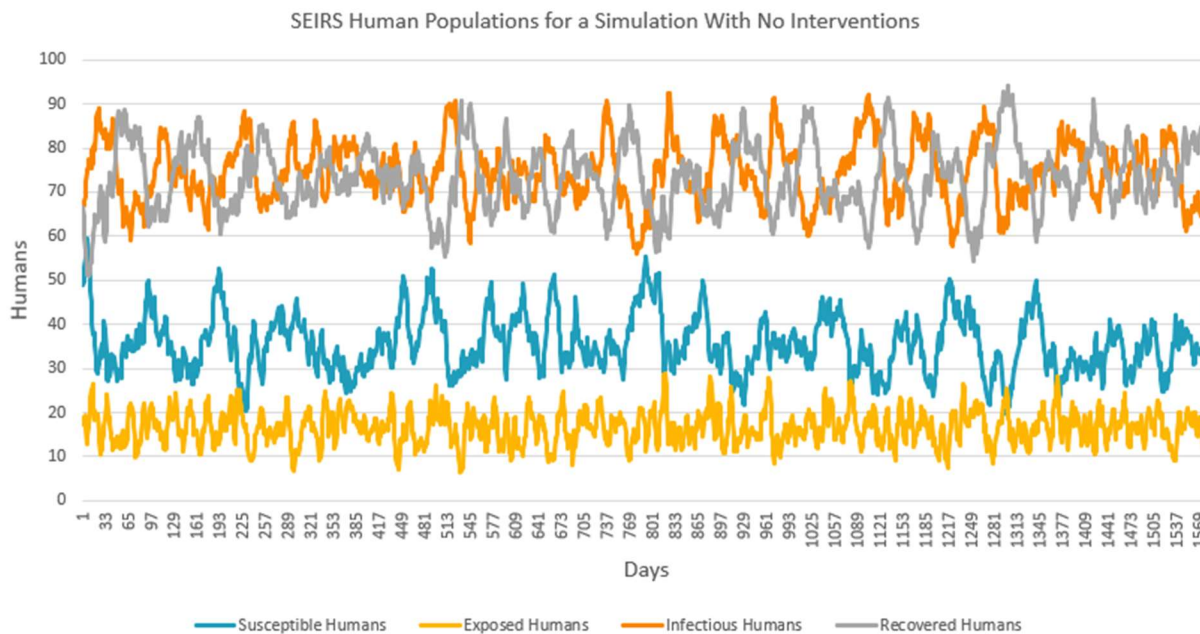
452 Fig 4. Mosquito Age Distribution.

This graph shows the percent of the population in each daily age group. The data is an average of the population age structure over many days in a control test. This data confirms our intended age structure. In addition to the data, a fitted curve is plotted to show the similarity between the data and an exponential decline.

453  
454 Verification checks if the simulation runs correctly, as intended by the modelers, primarily  
455 checking for coding and programming logic errors. Validation checks for the correctness of the  
456 design and specifications as defined by the researchers, primarily checking for reasonable  
457 emulation of the underlying phenomenon being investigated. A large literature describes methods

458 for conducting verification and validation of ABMs. See Cooley [58], Xiang [59], and Sargent  
459 [60] as examples. To verify and validate the model described in this paper, we used multiple  
460 methods, including code walkthroughs, face validity, internal validity, input-output analysis, and  
461 sensitivity analysis. Since the NetLogo tool provides multiple types of interface elements (e.g.,  
462 animations of agent movement, monitors displaying program variable values, graphical plots of  
463 time series – see Fig 3), face validity checks, internal validity checks, and input-output analysis  
464 was easily conducted. A face validity check on Fig 5 suggests that the underlying SEIRS disease  
465 model is properly implemented in the simulation. The number of humans in each state fluctuates  
466 stochastically in equilibrium around average levels. In Fig 6 we see support for the case that  
467 seasonality, insecticide treatments and IR are properly modeled and implemented in the model.  
468 Mosquito populations for three conditions are compared: baseline (no insecticides), IA insecticide  
469 introduced after 12 months, and LLA insecticide introduced after 12 months. Each of the three  
470 insecticide treatments was replicated 10 times with a different random starting seed. The thick  
471 lines in the plots are the average of all output sequences for each treatment. The IA insecticide is  
472 more effective initially, but resistance appears after a few years, while the LLA insecticide, while  
473 slightly less deadly, avoids resistance for the duration of the simulation run. This displays support  
474 for the verification and validation of the model. In these simulations we observe a minor  
475 dependence on the starting random generator seed, primary with the IA insecticide.





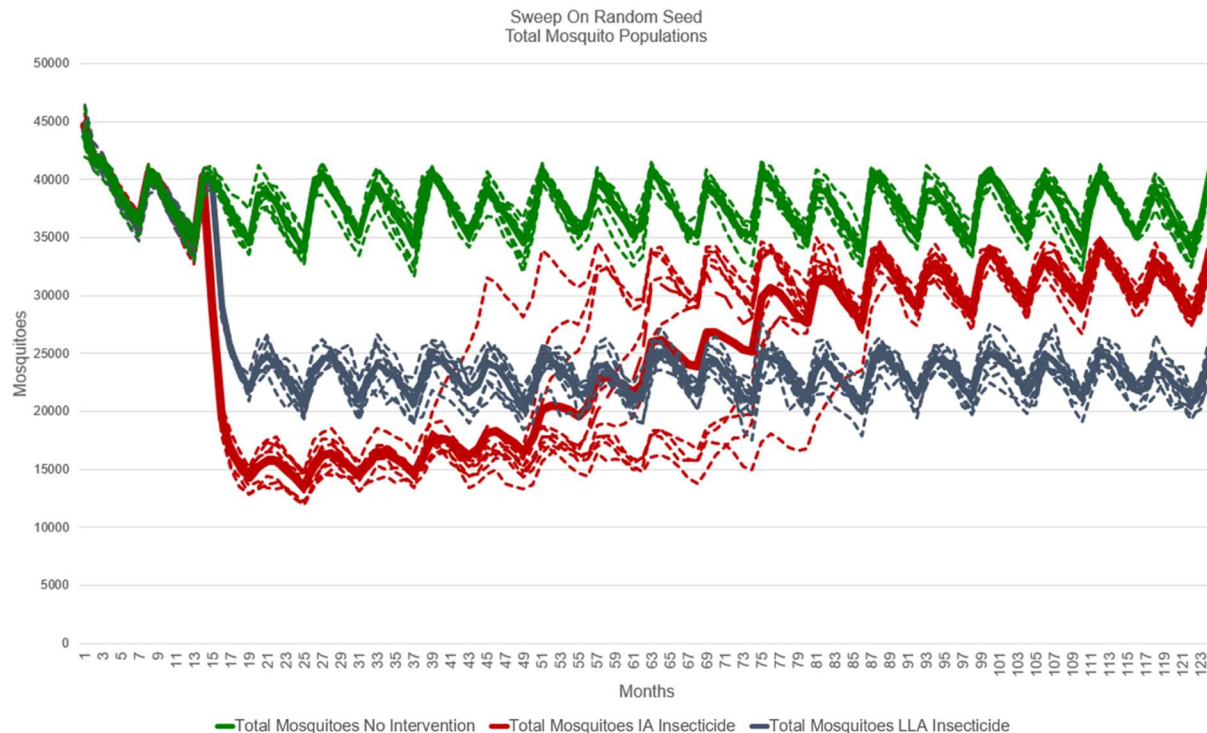
476

**Fig 5. Validation of assumed SEIRS model implemented in the NetLogo simulation.**

People transition over 10 years through Susceptible, Infected, Recovered and Susceptible disease stages associated with an endemic disease such as malaria. See S4-Fig.1 in Supporting Information “S4 Figures Output” for parameter settings for this result.

477





478

**Fig 6. Validity check of simulations of three insecticide treatments: no insecticide, IA insecticide, and LLA insecticide.**

No intervention (no insecticide baseline) displays mosquito population varying with seasonality and stochasticity of mosquito deaths, births, and gonotrophic cycles. IA insecticide treatment displays initial large reduction in mosquito population, followed by evolving IR with mosquito population rising close to the baseline. The LLA insecticide treatment displays sustained reduction in mosquito population by avoiding evolving IR over an 8-year period. Each of the three insecticide treatments was replicated 10 times with a different random starting seed. Minor dependence on the starting seed is seen in the IA insecticide intervention between months 40 through 85.

479

480

One aspect of our model which required extensive calibration, verification, and validation

481 was the genetics involved in the mosquito IR. Originally, we employed a simple method of

482 transferring the resistant gene from a resistant female to all offspring. We refined this process to

483 be more accurate through verification and validation to better represent the natural stochasticity of

484 genetics. We implemented the two-allele genotype and a set of probabilities for how those genes

485 were expressed described above. We also used the idea of resistance dominance from South and

486 Hastings [17] to model multiple resistance levels for the heterozygous genotype. With this method,  
487 we were able to provide better analysis on the development of IR.

## 488 489 **Sensitivity Analysis**

490  
491 Sensitivity analysis of the simulation outputs was conducted for many of the important model  
492 parameters, including 1) sensitivity of the initial random number generator seed, 2) the delay in  
493 the timing of the mosquito's death after exposure to LLA insecticide (*kill-time-mean*), 3) the  
494 variability in the timing of mosquitoes' death after exposure to LLA insecticide (*death-time-*  
495 *deviation*), 4) the fitness cost of the resistance allele, 5) the resistance dominance associated with  
496 the SR genotype, 6) the effect of the area of source control (reduction of aquatic breeding sites)  
497 around the villages, 7) the chance of exposure to the LLA insecticide (probability range), 8) LLA  
498 insecticide coverage (percent of village patches with insecticide), 9) the size of the source  
499 reduction area, and 10) different resistance mitigation policies. A more extensive documentation  
500 and presentation of this analysis can be found in Supporting Information S4 Figures.

501 The results of a sensitivity analysis for two items are displayed in Fig 7: 1) variability of  
502 simulation output caused by the initial value of the random number generator seed, and 2) a sweep  
503 over multiple values of the LLA insecticide standard deviation parameter.

## 504 505 **Sensitivity to Random Generator Seed**

506  
507 As discussed in the Model section above, the simulation expresses the randomness of many events  
508 in the transmission of malaria (e.g., probabilities of exposure to an insecticide, the probability that  
509 a mosquito blood meal results in an infection, the distribution of mortality of an LLA insecticide,  
510 etc.) with calls to a random number generator. As with most such random number generators, an  
511 initial seed is required to start a sequence of values, which then are used to compute probabilities

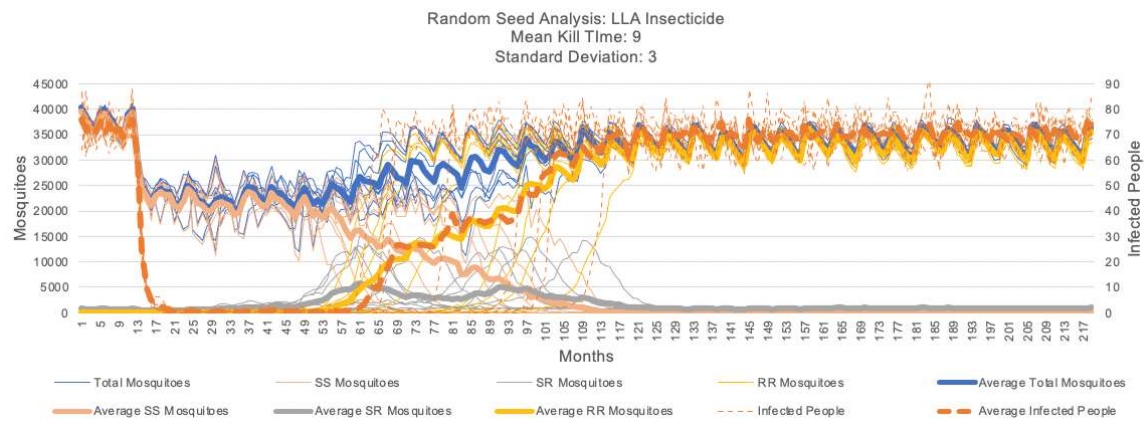
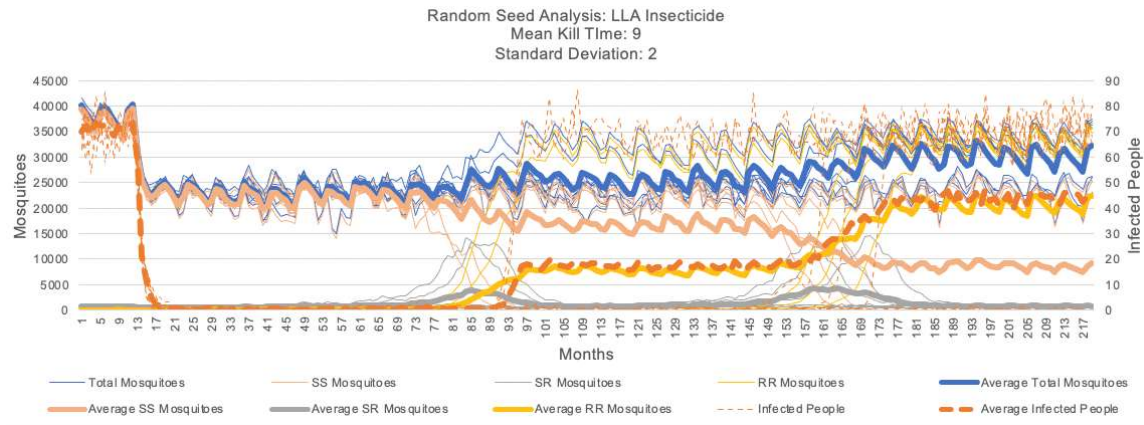
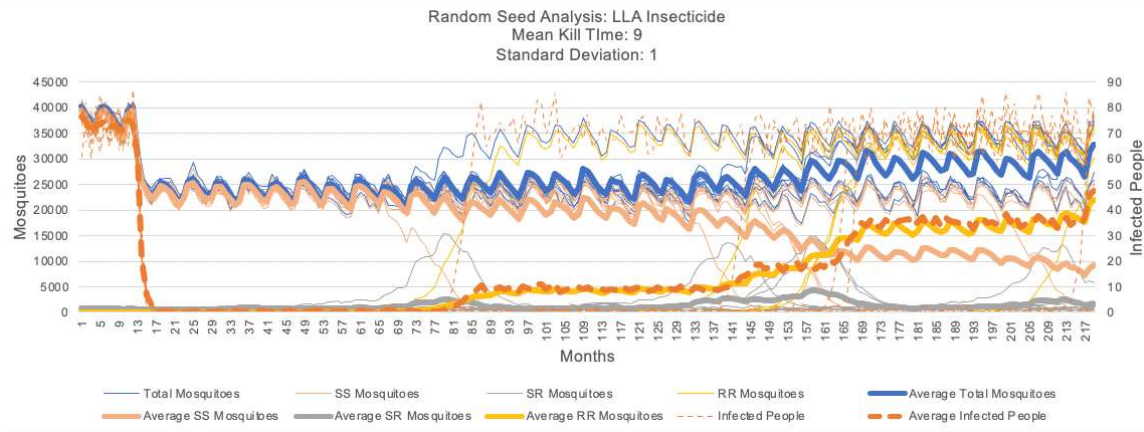
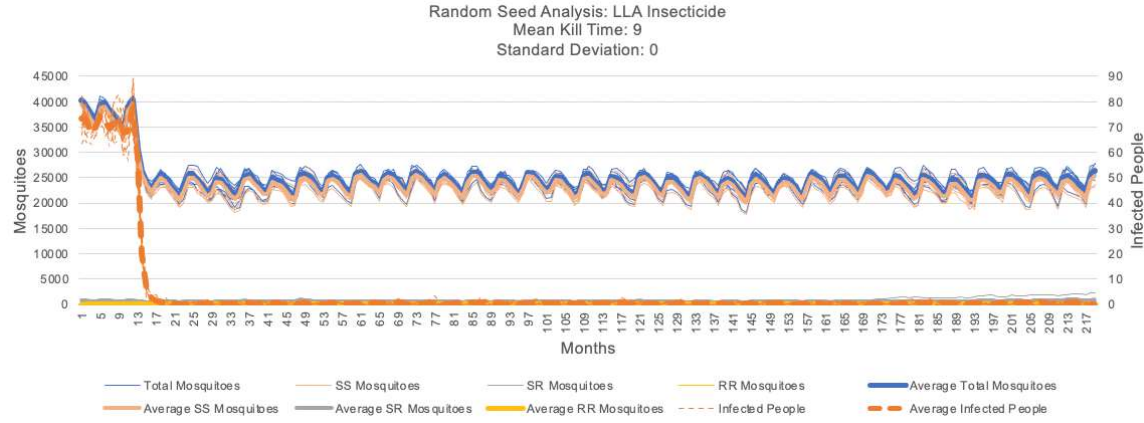
512 in the simulation. Simulation output will typically vary based on the value of the initial seed and  
513 this needs to be accounted for in the interpretation of the results. See Martinez-Moyano and Macal  
514 [61]. Fig 7 presents the results of 8 runs of the EMMIT program for an LLA insecticide scenario,  
515 while all model parameters were held to the same values with only the starting seed changed. The  
516 sensitivity of simulation outputs based on the starting seed can be observed in the wide range of  
517 output time series. The thin graph lines present the simulation output for individual runs. The thick  
518 lines report the mean of the output time series over all the 8 runs of the simulation. We thus  
519 conclude that a valid interpretation of the simulation results will require such sensitivity analysis  
520 to avoid the possible situation of any one simulation run being an outlier and approximately 8  
521 replications provide a good sample size for estimating the mean and variability of the simulation's  
522 output sequences.

523

### 524 **Sensitivity of Standard Deviation of LLA Insecticide Time to Death**

525

526 In Fig 7, a sensitivity analysis on the standard deviation parameter is displayed for a simulation of  
527 the LLA insecticide, with mean time to death of 9-days (*kill-time-mean*), and an iteration of zero  
528 through three days for the standard deviation (*death-time-deviation*). For each standard deviation  
529 setting in the model, eight replications were run. Outputs are total mosquito population, numbers  
530 of each mosquito genotype (SS, SR, RR), and the number of infectious humans. As the standard  
531 deviation increases, it can be observed that the number of infectious humans increases because of  
532 the survival of older infectious mosquitoes. Also, as the standard deviation increases, we more  
533 frequently see an earlier appearance of IR. See Supporting Information S4 Figures for other  
534 sensitivity analyses.



**Fig 7. Sensitivity analysis on the Random Number Generator seed and the standard deviation for the kill-time-delay for the LLA insecticide.**

This figure displays the results of eight replications of the EMMIT program with the same settings but different random seeds. Individual run results are shown in thin lines and the averages of each output parameter are thick lines. See Supporting Information S4 Figures for the simulation parameters.

536  
537  
538

**539 Results for Objective 1: Evaluating the Potential of LLA Insecticides**

540

541 LLA insecticides have been proposed as a potential method to delay the emergence of IR and to  
542 provide another tool for malaria control managers to reduce transmission by reducing the mosquito  
543 population [33-39, 41]. It is argued that the delayed death of the mosquitoes after first exposure to  
544 the LLA insecticide can reduce the selective evolutionary pressures that result in IR by permitting  
545 the SS or SR genotypes time to return the susceptible allele to the population.

546 The first objective of the research reported in this paper is to provide (by way of simulation)  
547 insights into the required performance properties of such LLA insecticides in order to achieve the  
548 goal of delaying the emergence of IR and to identify other variables that affect the insecticide's  
549 performance. Towards this objective, we have described 1) an assumed model of how malaria is  
550 transmitted between mosquito vectors and humans, 2) the emerging challenge of IR for malaria  
551 control, 3) the design and implementation of the EMMIT program, 4) the calibration, verification  
552 and validation of that program, and 5) and the use that program to explore, discover, and evaluate  
553 the effect of operational characteristics and assumptions about an LLA insecticide. See Supporting  
554 Information S4 Figures for an extensive report on this last item.

555 While there are many variables in the model, a few critical variables determine whether the  
556 LLA insecticide might be effective. An ideal set of values for these critical variables results in the  
557 LLA insecticide killing as many infected mosquitoes as possible prior to those mosquitoes



558 becoming infectious, but with as long a time-to-death delay as possible to slow IR emergence.  
559 Analysis of simulation results (see Supporting File S4 Figures) suggests that several operational  
560 characteristics of the LLA insecticide, its application, and the nature of the mosquito's resistance  
561 strongly influence the LLA insecticide's potential success. These six critical variables are: 1) the  
562 delay between exposure and death of the mosquito (i.e., the Kill-Time-Mean), 2) the distribution  
563 of mosquito deaths around the mean delay-to-death (i.e., the standard deviation), 3) the LLA  
564 insecticide coverage, 4) the fitness-cost of resistance, 5) the chance of exposure, and 6) resistance  
565 dominance.

566 The best values of these critical variables that the EMMIT program predicts for a LLA  
567 insecticide are displayed in Table 2. The associated values at which LLA insecticide perform with  
568 either high or low success are listed in separate columns. These variables are synergistic with one  
569 another so there is an overlap in the categorization of some values. Finally, we note that these  
570 results are dependent on our assumptions of mosquito properties, LLA insecticide properties,  
571 malaria transmission properties, and the course of the disease in the human population. The  
572 assumptions in the current model will need to be calibrated before evaluation of a specific LLA  
573 insecticide, a specific vector species, and a specific environmental and public health setting.

574 In Fig 7 we display a sensitivity analysis of one of the most important variables, the  
575 distribution of mosquito deaths around the mean time from exposure to death (i.e., the *death-time-*  
576 *deviation*). A zero value for the death-time-deviation means the LLA insecticide kills all the  
577 mosquitoes exposed to it at precisely the specified time, ideally just before the mosquito becomes  
578 infectious and begins to transmit malaria. Values for the *death-time-deviation* greater than zero  
579 imply that the LLA insecticide kills the mosquitoes either earlier or later than the ideal mean kill

580 time delay, diminishing its effectiveness both at reducing transmission and at slowing down the  
581 emergence of IR.

582           These results are primarily meaningful for a malaria transmission scenario close to the one  
583 we simulated. Researchers wishing to use such a model to inform the development of a candidate  
584 LLA insecticide will need to calibrate all the assumptions of the model especially for these six  
585 critical variables and confirm that our simplifying assumptions in the simulation are valid for their  
586 application.

587  
588

589 **Table 2. LLA Insecticide Critical Variables**

Critical Variables	Values With High Success	Values With Low Success
Kill-Time-Mean	7,8,9	10,11
death-time-deviation	0, 1, 2	2, 3
LLA-Coverage%	20, 25, 30, 40	10, 20, 50
Cost	High Cost, Low Cost, No Cost	Low Cost, No Cost
chance-of-exposure	50, 75, 100	25
resistance-dominance	0, 10, 20, 25, 30, 40, 50, 60	50, 60, 75, 80, 90, 100

590 Given all the assumptions built into the EMMIT program, six critical variables  
591 and their values associated with successful and less successful performance of the  
592 LLA insecticide are listed in this table. Successful performance here implies  
593 achieving the two simultaneous goals of a LLA insecticide: 1) killing mosquitoes  
594 before they can transmit malaria, and 2) doing it with as long as possible a delay  
595 so as to slow the emergence of IR. Some of the critical variables represent  
596 characteristics of IR in the mosquito population (cost-of-resistance and resistance-  
597 dominance) and the others are associated with the LLA insecticide's application  
598 (LLA-Coverage-%) and its performance (kill-time-mean, death-time-deviation,  
599 and chance-of-exposure). Researchers wishing to use such a model to inform the  
600 development of a candidate LLA insecticide will need to calibrate all the  
601 assumptions of the model especially for these six critical variables.

602  
603 **Results for Objective 2: Demonstration of an Approach for End-user**  
604 **Development of Computer Simulation in Support Public Health Research**  
605

606 The EMMIT program and investigation described in this paper demonstrate the feasibility of end-  
607 user/non-technical development of computer models and the ability to provide useful insights into  
608 public health research questions. Earlier in this paper we identified multiple modeling and  
609 simulation challenges, including: 1) requirement of either strong mathematical or computer  
610 programming skills, 2) the typical complexity of modeling and simulation, 3) long development



611 time, 4) lack of ease of use, 5) simulation adaptation and extensibility, 6) transparency of  
612 assumptions and limitations, and 7) often the need for high performance computing resources. In  
613 Table 3 we summarize how the approach we describe in this paper addresses these challenges. For  
614 this study, we wished to demonstrate the relative ease of developing a model primarily focused on  
615 a specific public health topic. While the model presented here can be adapted and extended, as the  
616 research topic changes sufficiently from the motivating topic used to design the original model,  
617 modifications will become more difficult and a new design may be required.

618

619 **Table 3. Modeling Challenges and How Approaches Address Those Challenges**

<b>Modeling Challenges</b>	<b>How Approach Presented Addresses the Challenges</b>
Need for Strong Mathematical or Computer Programming Skills	Agent-based simulation and modeling using NetLogo is employed. Basic mathematical and programming skills are needed. The initial version of the model was developed by Author 1, a novice programmer (at the time) with only one semester of programming training in MATLAB. Author 2 helped define the public health problem to be modeled and assisted with the design of the conceptual model, but only contributed to the simulation with verification and validation of the results (primarily face-validity).
Complexity	The model contains only 600 lines of functional code (other lines in program are comments or demonstrations of extensibility). NetLogo (and other such simulation building tools) are widely available, free and open source in many cases, and can be learned and used in a short time.
Long Development Time	The initial version was developed in under 100 hours of effort by Author 1. That development time included both learning how to use the NetLogo tool and actual computer coding. (That said, much more additional time was eventually needed for extensions, verification, validation, and documentation, specifically for this paper).
Ease of Use & Transparency of Assumptions and Limitations	The graphical interface permits interactive simulation runs providing understanding of the behavior of the program and insights into its assumptions and limitations. The program also includes 1) tabs to view the model’s documentation, 2) instructions on how to use the program, and 3) a full listing of the model’s code and comments.
Extensibility and Flexibility	In addition to the model of LLA insecticides for addressing the malaria transmission control IR problem, two other interventions were added as a demonstration of the potential ease of extending the simulation. This required under 10 lines of code for the source control intervention and about 35 lines of code for the IR mitigation policy.
Need for High Performance Computing Resources	NetLogo and other such simulation development tools run on consumer-grade desktop/laptop computers. NetLogo programs can be run in “batch mode” using the Behavior Space tool on desktop and laptop computers utilizing all available cores, and if needed, can run in “headless mode” (ie, no user interface) from the command line on computer clusters. Modern consumer-grade computers have increased performance, often equivalent to high performance computing of a decade ago.

620

621

## 622 **Discussion**

623 In this study we designed, developed, verified, and validated a basic model of malaria transmission  
624 using NetLogo as a demonstration of how an easy-to-use ABM tool can be used to investigate  
625 specific public health questions. To demonstrate that meaningful research questions can be  
626 investigated with this approach, we presented the problem of IR and a proposed IA insecticide  
627 alternative – LLA insecticides – to evaluate how effective LLA insecticides could be at both  
628 controlling malaria and avoiding IR. We designed the EMMIT program such that its behavior and  
629 assumptions were transparent so that it can be adapted, used and understood by researchers from  
630 many disciplines, including those who regulate the production of new insecticides, researchers  
631 who engineer new insecticides, and public managers who design malaria control campaigns  
632 impacted by IR. We conducted comparison runs on a representative IA insecticide, such as those  
633 currently approved for use, and a hypothetical LLA insecticide. Two especially important  
634 parameters we evaluated were the *Kill-Time-Mean* (the mean delay-before-death after exposure to  
635 the LLA insecticide) and the standard deviation of the delay. Our analysis suggests that the more  
636 closely the timing of the LLA insecticide’s delay-to-death coincides with the end of the EIP, the  
637 better it was at preventing malaria transmission and avoiding insecticide resistance in the mosquito  
638 population. We also concluded that the hypothetical LLA insecticide we simulated performed  
639 better than the instant acting insecticide in most situations.

640 We made many simplifying assumptions in the model. We assumed that the mosquitoes  
641 have a constant baseline hourly mortality regardless of age or position on the map. While this is a  
642 very difficult parameter to calibrate, it could be improved by implementing some of the findings  
643 from [11]. Our simplification may result in a slight change in the selective pressure for IR and in

644 the malaria transmission as Hancock [11] reported that mosquitoes may have a longer average  
645 lifespan than we modeled.

646 The two-allele mosquito genotype was also a simplification in our model as IR is often the  
647 result of many concurrent and interacting genotypic and phenotypic changes. An improvement to  
648 this simplification would be to increase the complexity of the modeled mosquito genotype and the  
649 fitness benefits and costs associated with that increase. This simplification may result in a change  
650 in the prevalence of IR, especially in the instant acting insecticide.

651 Another simplified component of our model was the mosquito movement. The mosquitoes  
652 move randomly until they enter the region of the map where they can sense the village (controlled  
653 by the *village-sense-radius* variable). This variable was not based on reported data but rather  
654 calibrated using face validity to find a suitable value. Future improvement might be to calibrate  
655 this variable more accurately to a specific region and mosquito population, and incorporate  
656 reported movement patterns for that geographic location.

657 Other simplifications that could be improved include: 1) male mosquitoes and their  
658 genotypes are abstracted in the simulation, 2) no birth or deaths of male mosquitoes are modeled,  
659 3) no cost of resistance is included for the male mosquitoes, and 4) the cost of female mosquito IR  
660 is modeled by way of reduced travel distances per time step. These simplifications would need to  
661 be improved for more accurate representation of resistance cost in both the males and females or  
662 for studies of other interventions such as a sterile insect technique.

663 The humans in our model also have simple characteristics and behaviors. Most only move  
664 randomly within the village. A possible improvement to this would be to add human attributes  
665 such as age and gender specific differences for time spent in areas with a higher likelihood of  
666 infection, differences in bed-net usage, etc. We modeled a small number of humans who traveled

667 out of the village. These people represented village members who may leave the village area for  
668 several days to perform agricultural, forestry or mining work away from their village. These people  
669 moved constantly in and out of the village in straight lines regardless of whether they were  
670 infected. This routine may not be representative of some populations and can be easily edited or  
671 disabled in the code of the model. We did model a feature where human agents were infected  
672 randomly, without mosquito interaction. This simulates humans receiving infections outside of the  
673 modeled region and bringing them back to their community, i.e., importation of external malaria  
674 cases [62]. We also did not model any malarial drug administration, prevention, and treatment. We  
675 did not model births, deaths, or age, sex, and pregnancy dependent malaria susceptibility in our  
676 model. This simplification may have effects on the malaria transmission rate in our simulation,  
677 depending on the specific questions being investigated.

678 We modeled the insecticides in our model so that they had a constant coverage rate and a  
679 constant performance level. Application details, reapplication, effectiveness decay, or delivery  
680 mechanism of the insecticides, (such as insecticide treated bed nets or indoor residual spraying)  
681 were not explicitly modeled. Such details should be relatively easy to add. In practice these  
682 performance parameters are difficult to achieve but may be closely approximated with frequent re-  
683 applications. For locations where reapplication is not an accessible option, an improvement to the  
684 model would be to have the chance of exposure to the insecticide decay over time to show the  
685 deterioration in the active amount of insecticide remaining.

686 Some remaining factors to explore which we did not investigate are: the length of time that  
687 the humans spend in the infected and recovered stages, the introduction of bed nets or other  
688 interventions, the combination of the insecticides with source control, the effect of changing  
689 temperatures, and varying the number of people in the simulation.

690 While NetLogo is the modeling tool used for this study, many other such tools are available  
691 [27, 29-31]. NetLogo is a relatively mature tool, with the benefit of many useful features  
692 supporting the programmer: an extensive tutorial and manual, tool studies, and many example  
693 models. Because it was originally designed for educational applications, inspired by the Logo  
694 project, and used the Lisp programming language in precursor implementations, some of  
695 NetLogo's programming syntax contain curious legacy artifacts, such as agents are called turtles  
696 in the programming language. These legacy artifacts will seem strange to programmers trained in  
697 more contemporary programming languages, but should not be a problem for novice programmers.  
698 Given this minor issue, the tool is implemented in Java and Scala providing portability to most  
699 modern computer operating systems: Windows, Mac OS, and Linux.

## 700 **Conclusions**

701 This paper presents the results of a study with two related objectives: 1) demonstrate how simple  
702 but useful models of public health questions can be rapidly build by skilled public health  
703 researchers, including those with limited mathematical modeling or programming skills (i.e., end-  
704 user-development), and 2) demonstrate this by simulating the performance of proposed LLA  
705 insecticides as an approach to address the major problem of IR for malaria control. A ready-to-run  
706 copy of the EMMIT program including graphical interface, usage information, and editable code  
707 is included. Supporting information also includes documentation using the ODD format for ABMs  
708 and an extensive report of calibration, verification, and validation simulation runs.

709 For this project, the agent-based modeling approach, employing the NetLogo tool, was  
710 used. The model presented in this paper was coded exclusively by one novice programmer (the  
711 first author), with the second author contributing by framing of the public health research problem  
712 and assisting with verification and validation. The modeling and simulation approach presented in

713 this paper might be ideally suited to smaller or urgent public health investigations where resources  
714 are limited, but the potential insight provided by the simulation is needed quickly. For a study such  
715 as this one, the public health expert alone might be able to design and program the model in support  
716 of their investigation. For larger scale investigations where more time and resources are available,  
717 a team including both the public health experts and skilled mathematical modelers or programmers  
718 might be more appropriate. We suggest that the EMMIT program and investigation described in  
719 this paper demonstrate the feasibility of end-user/non-technical development of computer  
720 simulations and the ability to provide useful insights into public health research questions.

## 721 **Acknowledgments**

722 We wish to acknowledge unpublished dissertation results based on the agent-based modeling of  
723 the LLA insecticide by Ying Zhou that inspired part of this study. We thank the guidance and  
724 support for this project from the Perkins Lab in the Department of Biological Sciences at the  
725 University of Notre Dame, specifically Alex Perkins and John Huber.

## 726 **Supporting Information**

727 S1 Program

728 The EMMIT program, requires download of NetLogo from:

729 <https://ccl.northwestern.edu/netlogo/download.shtml>

730 See system requirements at: <https://ccl.northwestern.edu/netlogo/requirements.html>

731 (NLOGO/ZIP)

732

733 S2 ODD Documentation

734 The EMMIT program presented in this paper is documented below using the standard ODD  
735 format (Grimm2006, Grimm2010, Grimm2017, Grimm2020).

736 (PDF)

737

738 S3 Table Model Variables

739 Model variables (input and output), definitions, values, and data types.

740 (PDF)

741

742 S4 Supplemental Figures Output Plots  
743 Supplementary simulation results with “behavior space” configuration (used to generate multiple  
744 batch simulation runs). Plots generated from CSV output files using Excel.  
745 (PDF)  
746  
747

## 748 **References**

- 749  
750 1. Maglio PP, Sepulveda M-J, Mabry PL. Mainstreaming modeling and simulation to  
751 accelerate public health innovation. *American journal of public health*. 2014;104(7):1181-6.  
752 2. Freebairn L, Atkinson J-A, Kelly PM, McDonnell G, Rychetnik L. Decision makers’  
753 experience of participatory dynamic simulation modelling: methods for public health policy.  
754 *BMC medical informatics and decision making*. 2018;18(1):1-14.  
755 3. Ramanath AM, Gilbert N. The design of participatory agent-based social simulations.  
756 *Journal of Artificial Societies and Social Simulation*. 2004;7(4).  
757 4. Barricelli BR, Cassano F, Fogli D, Piccinno A. End-user development, end-user  
758 programming and end-user software engineering: A systematic mapping study. *Journal of*  
759 *Systems and Software*. 2019;149:101-37.  
760 5. Repenning A, Ioannidou A. What makes end-user development tick? 13 design  
761 guidelines. *End user development*: Springer; 2006. p. 51-85.  
762 6. Mabaso ML, Sharp B, Lengeler C. Historical review of malarial control in southern  
763 African with emphasis on the use of indoor residual house-spraying. *Tropical Medicine &*  
764 *International Health*. 2004;9(8):846-56.  
765 7. Hemingway J, Ranson H, Magill A, Kolaczinski J, Fornadel C, Gimnig J, et al. Averting  
766 a malaria disaster: will insecticide resistance derail malaria control? *The Lancet*.  
767 2016;387(10029):1785-8.  
768 8. WHO. World malaria report 2020 2020 [Available from:  
769 <https://www.who.int/teams/global-malaria-programme/reports/world-malaria-report-2020>.  
770 9. Nauen R. Insecticide resistance in disease vectors of public health importance. *Pest*  
771 *Management Science: formerly Pesticide Science*. 2007;63(7):628-33.  
772 10. Rivero A, Vezilier J, Weill M, Read AF, Gandon S. Insecticide control of vector-borne  
773 diseases: when is insecticide resistance a problem? *PLoS Pathog*. 2010;6(8):e1001000.  
774 11. Hancock PA, Hendriks CJ, Tangena J-A, Gibson H, Hemingway J, Coleman M, et al.  
775 Mapping trends in insecticide resistance phenotypes in African malaria vectors. *PLoS biology*.  
776 2020;18(6):e3000633.  
777 12. Implications of Insecticide Resistance Consortium. Implications of insecticide resistance  
778 for malaria vector control with long-lasting insecticidal nets: trends in pyrethroid resistance  
779 during a WHO-coordinated multi-country prospective study. *Parasites & vectors*. 2018;11:1-10.  
780 13. Eckhoff PA, Wenger EA. The EMOD Individual-Based Model. In: Arifin SN, Madey  
781 GR, Collins FH, editors. *Spatial Agent-Based Simulation Modeling in Public Health: Design,*  
782 *Implementation, and Applications for Malaria Epidemiology* 2016. p. 185-208.  
783 14. Kiware SS, Chitnis N, Tatarsky A, Wu S, Castellanos HMS, Gosling R, et al. Attacking  
784 the mosquito on multiple fronts: Insights from the Vector Control Optimization Model (VCOM)  
785 for malaria elimination. *PloS one*. 2017;12(12):e0187680.



- 786 15. SwissTPH. OpenMalaria 2020 [Available from:  
787 <https://github.com/SwissTPH/openmalaria/wiki>.  
788 16. Barbosa S, Kay K, Chitnis N, Hastings IM. Modelling the impact of insecticide-based  
789 control interventions on the evolution of insecticide resistance and disease transmission.  
790 *Parasites & Vectors*. 2018;11(1):482.  
791 17. South A, Hastings IM. Insecticide resistance evolution with mixtures and sequences: a  
792 model-based explanation. *Malaria Journal*. 2018;17(1):80.  
793 18. Amadi M, Shcherbacheva A, Haario H. Agent-based modelling of complex factors  
794 impacting malaria prevalence. *Malaria journal*. 2021;20(1):1-15.  
795 19. Arifin S, Arifin RR, Pitts DDA, Rahman MS, Nowreen S, Madey GR, et al. Landscape  
796 epidemiology modeling using an agent-based model and a geographic information system. *Land*.  
797 2015;4(2):378-412.  
798 20. Arifin SN, Madey GR, Collins FH. *Spatial agent-based simulation modeling in public  
799 health: design, implementation, and applications for malaria epidemiology*: John Wiley & Sons;  
800 2016.  
801 21. Arifin SN, Zhou Y, Davis GJ, Gentile JE, Madey GR, Collins FH. An agent-based model  
802 of the population dynamics of *Anopheles gambiae*. *Malaria journal*. 2014;13(1):1-20.  
803 22. Gentile JE, Rund SS, Madey GR. Modelling sterile insect technique to control the  
804 population of *Anopheles gambiae*. *Malaria journal*. 2015;14(1):1-12.  
805 23. Layie P, Kamla VC, Kamgang JC, Wono YE. Agent-based modeling of malaria control  
806 through mosquito aquatic habitats management in a traditional sub-Saharan grouping. *BMC  
807 Public Health*. 2021;21(1):1-20.  
808 24. Modu B, Polovina N, Konur S. Agent-Based Modelling of Malaria Transmission  
809 Dynamics. arXiv preprint arXiv:200406477. 2020.  
810 25. Smith NR, Trauer JM, Gambhir M, Richards JS, Maude RJ, Keith JM, et al. Agent-based  
811 models of malaria transmission: a systematic review. *Malaria journal*. 2018;17(1):1-16.  
812 26. Smith T, Killeen GF, Maire N, Ross A, Molineaux L, Tediosi F, et al. Mathematical  
813 modeling of the impact of malaria vaccines on the clinical epidemiology and natural history of  
814 *Plasmodium falciparum* malaria: Overview. *The American journal of tropical medicine and  
815 hygiene*. 2006;75(2\_suppl):1-10.  
816 27. Abar S, Theodoropoulos GK, Lemarinier P, O'Hare GM. Agent Based Modelling and  
817 Simulation tools: A review of the state-of-art software. *Computer Science Review*. 2017;24:13-  
818 33.  
819 28. Cartwright SJ, Bowgen KM, Collop C, Hyder K, Nabe-Nielsen J, Stafford R, et al.  
820 Communicating complex ecological models to non-scientist end users. *Ecological Modelling*.  
821 2016;338:51-9.  
822 29. Kravari K, Bassiliades N. A survey of agent platforms. *Journal of Artificial Societies and  
823 Social Simulation*. 2015;18(1):11.  
824 30. Nikolai C, Madey G. Tools of the trade: A survey of various agent based modeling  
825 platforms. *Journal of Artificial Societies and Social Simulation*. 2009;12(2):2.  
826 31. Rakić K, Rosić M, Boljat I. A Survey of Agent-Based Modelling and Simulation Tools  
827 for Educational Purpose. *Tehnički vjesnik*. 2020;27(3):1014-20.  
828 32. Wilensky U. NetLogo 1999 [Available from: <http://ccl.northwestern.edu/netlogo/>.  
829 33. Koella JC, Lynch PA, Thomas MB, Read AF. Towards evolution-proof malaria control  
830 with insecticides. *Evolutionary applications*. 2009;2(4):469-80.

- 831 34. Read AF, Lynch PA, Thomas MB. How to make evolution-proof insecticides for malaria  
832 control. *PLoS Biol.* 2009;7(4):e1000058.
- 833 35. Fang W, Vega-Rodríguez J, Ghosh AK, Jacobs-Lorena M, Kang A, St Leger RJ.  
834 Development of transgenic fungi that kill human malaria parasites in mosquitoes. *Science.*  
835 2011;331(6020):1074-7.
- 836 36. Heinig RL, Paaijmans KP, Hancock PA, Thomas MB. The potential for fungal  
837 biopesticides to reduce malaria transmission under diverse environmental conditions. *Journal of*  
838 *Applied Ecology.* 2015;52(6):1558-66.
- 839 37. Mnyone LL, Kirby MJ, Lwetoijera DW, Mpingwa MW, Knols BGJ, Takken W, et al.  
840 Infection of the malaria mosquito, *Anopheles gambiae*, with two species of entomopathogenic  
841 fungi: effects of concentration, co-formulation, exposure time and persistence. *Malaria Journal.*  
842 2009;8(1):309.
- 843 38. Mnyone LL, Lyimo IN, Lwetoijera DW, Mpingwa MW, Nchimbi N, Hancock PA, et al.  
844 Exploiting the behaviour of wild malaria vectors to achieve high infection with fungal biocontrol  
845 agents. *Malaria Journal.* 2012;11(1):87.
- 846 39. Shen D, Nyawira KT, Xia A. New discoveries and applications of mosquito fungal  
847 pathogens. *Current Opinion in Insect Science.* 2020;40:111-6.
- 848 40. Blanford S, Shi W, Christian R, Marden JH, Koekemoer LL, Brooke BD, et al. Lethal  
849 and pre-lethal effects of a fungal biopesticide contribute to substantial and rapid control of  
850 malaria vectors. *PLoS one.* 2011;6(8):e23591.
- 851 41. Farenhorst M, Farina D, Scholte E-J, Takken W, Hunt RH, Coetzee M, et al. African  
852 water storage pots for the delivery of the entomopathogenic fungus *Metarhizium anisopliae* to  
853 the malaria vectors *Anopheles gambiae* ss and *Anopheles funestus*. *The American journal of*  
854 *tropical medicine and hygiene.* 2008;78(6):910-6.
- 855 42. Cirimotich CM, Dong Y, Garver LS, Sim S, Dimopoulos G. Mosquito immune defenses  
856 against *Plasmodium* infection. *Dev Comp Immunol.* 2010;34(4):387-95.
- 857 43. Ohm JR, Baldini F, Barreaux P, Lefevre T, Lynch PA, Suh E, et al. Rethinking the  
858 extrinsic incubation period of malaria parasites. *Parasites & Vectors.* 2018;11(1):178.
- 859 44. CDC. Malaria Lifecycle 2020 [Available from:  
860 <https://www.cdc.gov/malaria/about/biology/index.html>.
- 861 45. WHO. Malaria Insecticide Resistance 2020 [Available from:  
862 [https://www.who.int/malaria/areas/vector\\_control/insecticide\\_resistance/en/](https://www.who.int/malaria/areas/vector_control/insecticide_resistance/en/).
- 863 46. Allossogbe M, Gnanguenon V, Yovogan B, Akinro B, Anagonou R, Agossa F, et al.  
864 WHO cone bio-assays of classical and new-generation long-lasting insecticidal nets call for  
865 innovative insecticides targeting the knock-down resistance mechanism in Benin. *Malaria*  
866 *Journal.* 2017;16(1):77.
- 867 47. Dengela D, Seyoum A, Lucas B, Johns B, George K, Belemvire A, et al. Multi-country  
868 assessment of residual bio-efficacy of insecticides used for indoor residual spraying in malaria  
869 control on different surface types: results from program monitoring in 17 PMI/USAID-supported  
870 IRS countries. *Parasites & Vectors.* 2018;11(1):71.
- 871 48. Berticat C, Bonnet J, Duchon S, Agnew P, Weill M, Corbel V. Costs and benefits of  
872 multiple resistance to insecticides for *Culex quinquefasciatus* mosquitoes. *BMC Evolutionary*  
873 *Biology.* 2008;8(1):104.
- 874 49. Bass C. Does resistance really carry a fitness cost? *Current opinion in insect science.*  
875 2017;21:39-46.

- 876 50. Homem RA, Buttery B, Richardson E, Tan Y, Field LM, Williamson MS, et al.  
877 Evolutionary trade-offs of insecticide resistance—The fitness costs associated with target-site  
878 mutations in the nAChR of *Drosophila melanogaster*. *Molecular ecology*. 2020;29(14):2661-75.
- 879 51. Grimm V, Berger U, Bastiansen F, Eliassen S, Ginot V, Giske J, et al. A standard  
880 protocol for describing individual-based and agent-based models. *Ecological Modelling*.  
881 2006;198(1):115-26.
- 882 52. Grimm V, Berger U, DeAngelis DL, Polhill JG, Giske J, Railsback SF. The ODD  
883 protocol: A review and first update. *Ecological Modelling*. 2010;221(23):2760-8.
- 884 53. Grimm V, Polhill G, Touza J. Documenting social simulation models: the ODD protocol  
885 as a standard. *Simulating social complexity*: Springer; 2017. p. 349-65.
- 886 54. Grimm V, Railsback SF, Vincenot CE, Berger U, Gallagher C, DeAngelis DL, et al. The  
887 ODD Protocol for Describing Agent-Based and Other Simulation Models: A Second Update to  
888 Improve Clarity, Replication, and Structural Realism. *Journal of Artificial Societies and Social  
889 Simulation*. 2020;23(2):7.
- 890 55. WHO. Test procedures for insecticide resistance monitoring in malaria vector mosquitoes  
891 2016 [Available from: [https://apps.who.int/iris/bitstream/handle/10665/250677/9789241511575-  
892 eng.pdf](https://apps.who.int/iris/bitstream/handle/10665/250677/9789241511575-eng.pdf)].
- 893 56. Costantini C, Li S-G, Torre AD, Sagnon Nf, Coluzzi M, Taylor CE. Density, survival and  
894 dispersal of *Anopheles gambiae* complex mosquitoes in a West African Sudan savanna village.  
895 *Medical and Veterinary Entomology*. 1996;10(3):203-19.
- 896 57. Thomas CJ, Cross DE, Bøgh C. Landscape Movements of *Anopheles gambiae* Malaria  
897 Vector Mosquitoes in Rural Gambia. *PLOS ONE*. 2013;8(7):e68679.
- 898 58. Cooley P, Solano E, editors. *Agent-Based Model (ABM) Validation Considerations 2011*.  
899 59. Xiang X, Kennedy R, Madey G, Cabaniss S. Verification and Validation of Agent-based  
900 Scientific Simulation Models. *Agent-Directed Simulation Conference*. 2005.
- 901 60. Sargent RG, Balci O, editors. *History of verification and validation of simulation models*.  
902 2017 Winter Simulation Conference (WSC); 2017 3-6 Dec. 2017.
- 903 61. Martinez-Moyano IJ, Macal CM, editors. *A primer for hybrid modeling and simulation*.  
904 2016 Winter Simulation Conference (WSC); 2016 11-14 Dec. 2016.
- 905 62. Chiyaka C, Tatem A, Cohen J, Gething P, Johnston G, Gosling R, et al. The stability of  
906 malaria elimination. *Science*. 2013;339(6122):909-10.
- 907