

## Time scale performance of rapid antigen testing for SARS-COV-2: evaluation of ten rapid antigen assays

Zakarya Abusrewil<sup>1</sup>, Inas M Alhudiri<sup>2</sup>, Hamza Hussein Kaal<sup>3</sup>, Salah Edin El Meshri<sup>4</sup>, Fawzi O. Ebrahim<sup>5</sup>, Tarek Dalyoum<sup>2</sup>, Abdussamee A Efrefer<sup>2</sup>, Khaled Ibrahim<sup>2</sup>, Mohammed Ben Elfghi, Suleiman Abusrewil<sup>6</sup>, Adam Elzagheid<sup>2\*</sup>

1 Forensic Medicine and toxicology department, University of Tripoli

2 Genetic Engineering Department, Biotechnology Research Center, Tripoli, Libya

3 Alcala de henares hospitals, Madrid

4 Microbiology Department, Biotechnology Research Center, Tripoli, Libya

5 Cell Biology Department, Biotechnology Research Center, Tripoli, Libya

6 Paediatrics department, University of Tripoli

\* Corresponding author: Professor Adam Elzagheid, email: [elzagheid@yahoo.com](mailto:elzagheid@yahoo.com)

### Abstract

**Background:** There is a great demand for more rapid tests for SARS-COV-2 detection to reduce waiting time, boost public health strategies for combating disease, decrease costs, and prevent overwhelming laboratory capacities. This study was conducted to assess the performance of 10 antigen-based rapid assays for the detection of SARS-CoV-2 in nasopharyngeal swab specimens.

**Methods:** We analyzed 231 nasopharyngeal samples collected from October 2020-December 2020, from suspected COVID-19 cases and contacts of positive cases at Biotechnology Research Center laboratories, Tripoli, Libya. The performance of 10 COVID-19 Ag rapid test devices (Fluorecare, ESPLINE, RapiGen, Abbott Panbio, Flowflex, Acon, Assut Europe, Orient Gene, CerTest, Bioperfectus, AMP) for the detection of SARS-CoV-2 antigen was compared to RT-qPCR.

**Results:** Among the 108 positive samples detected by RT-qPCR, the COVID-19 antigen (Ag) tests detected 83, giving a sensitivity of 76.85% (95% CI, 67.75- 84.43). 161 patients were symptomatic. The median cycle threshold was 25. The mean duration from symptom onset was 6.6 ±4.3 days. Sensitivity and specificity during the first 6 days of symptoms and in samples with high viral loads ct<25, was 96.4%. No false positives were detected by any of the Ag tests utilized in this study. False negative samples had a median Ct of 34 and average duration of onset of symptoms of 11.3 days (range=5-20).

**Conclusions:** Rapid antigen test diagnosis has high sensitivity and specificity in early disease when patients present less than 7 days of symptom onset. Patients are encouraged to test as soon as they get COVID-19 related symptoms within 1 week and to seek medical advice within 24 hrs. if they develop disturbed smell/taste. The use of rapid antigen tests is important for controlling COVID-19 pandemic and reducing burden on molecular diagnostic laboratories.

Keywords: Rapid antigen tests, SARS-CoV-2, COVID-19 diagnosis, Surveillance

## **Introduction**

Nucleic acid amplification test using RT-PCR assay is currently the mainstay diagnostic test for COVID-19 in most laboratories. However, results of RT-PCR assays can take several days to deliver hampering the disease containment efforts. Consequently, there is an emerging demand for more rapid and easier tests to reduce waiting time, boost public health strategies for combating disease, decrease costs, and prevent overwhelming laboratory capacities. SARS-CoV-2-rapid antigen tests have been largely developed and many countries have adopted them for diagnosis in triage and hospital settings and in some countries are being used at points of entry (“Rapid Antigen test,” 2020).

The World health organization encourages laboratories to evaluate the performance of commercial rapid antigen assays to update the current evidence and recommend specific test kits (World Health Organization (WHO), 2020).

Libyan health authorities have approved the use of rapid antigen tests in triage, isolation centers and hospitals (“Press conference for scientific consultancy committee for coronavirus epidemic in Libya,” 2020). This study was conducted to assess the performance of 10 antigen-based rapid assays for the detection of SARS-CoV-2 in nasopharyngeal swab specimens from suspected COVID-19 cases and contacts.

## **Methods**

### **Antigen Test procedure**

We evaluated the performance of 10 rapid antigen tests for SARS-COV-2, based on colloidal gold chromatography immunoassay (Fluorecare SARS-CoV-2 spike protein test, Shenzhen Microprofit Biotech Co; ESPLINE SARS-CoV-2, Fujirbio; RapiGen Covid-19 Ag Detection Kit, Biocredit; Abbott Panbio™ COVID-19 Ag Rapid Test; Flowflex™ SARS-CoV-2 Antigen Rapid Test, Acon; Assut Europe antigen testing COVID-19, Coronavirus ag rapid test cassette

Orient Gene, CerTest SARS-CoV-2 one step card test; Certest Biotech, Bioperfectus SARS-CoV-2 Antigen Rapid Test Kit; bioPerfectus technologies, AMP Rapid Test SARS-CoV-2 Ag; AMP diagnostics). All assays detect SARS-CoV-2 nucleoprotein except Fluorcare assay which detects spike protein. Tests were performed according to the manufacturer's protocol; briefly nasopharyngeal swabs were placed in extraction solution, swirled 10 times and squeezed against the collection tube wall. Extracted sample was applied on a cassette and allowed to react with a monoclonal anti- SARS-CoV-2 antibody, after a 15-30-min incubation, for the presence or absence of bands and its intensity following antigen-antibody reaction. Positive result was defined by clear intense band at the T (test) mark on the cassette, weak positive was defined by faint to moderately intense band. Negative results indicate no visible band. If control reaction failed the test was considered invalid test and repeated. The results were read by two independent observers.

### **RT-PCR assay**

RNA was extracted from viral transport media using magnetic bead NuActor Automatic Extractor (Boditech Med, South Korea). All patient samples were also tested by RT-PCR (Xpert Xpress SARS-CoV-2 GeneXpert or DAAN GENE RT-PCR COVID-19 detection kit) within 24 hrs after collection. Both assays target Nucleocapsid (N) gene for which cycle threshold (Ct) was considered in this study. We tested 31 nasopharyngeal swabs which was put in the lysis buffer used for antigen testing after transferring them into viral transport media for RT-PCR.

### **Statistical analysis**

Sensitivity, specificity, positive and negative predictive values and accuracy were calculated using MedCalc online statistical software (“MedCalc’s Diagnostic test evaluation calculator,” n.d.). Laboratory COVID-19 prevalence data were obtained from Biotechnology Research Center case registry for the study period (unpublished).

Sensitivity was calculated as:  $(\text{true positives}) / (\text{true positives} + \text{false negatives}) \times 100$

Specificity was calculated as:  $(\text{true negatives}) / (\text{true negatives} + \text{false positives}) \times 100$

Positive predictive value:

$$\text{Sensitivity} \times \text{prevalence} / (\text{Sensitivity} \times \text{prevalence} + (1 - \text{specificity}) \times (1 - \text{prevalence}))$$

Negative predictive value:

$$\text{Specificity} \times (1 - \text{prevalence}) / ((1 - \text{sensitivity}) \times \text{prevalence} + (\text{specificity}) \times (1 - \text{prevalence}))$$

Accuracy:  $\text{Sensitivity} \times \text{Prevalence} + \text{Specificity} \times (1 - \text{Prevalence})$

## **Clinical Samples**

A total of 231 patients with clinical features suggestive of COVID-19 or a history of close contact with COVID-19 positive patient were enrolled in this study from October 10 - December 31 2020. Few patients were asymptomatic and had no history of contact (Table 1). Testing was performed at variable times following symptom onset,

Ethical approval for this study was granted by Biotechnology Research Center Bioethics committee and informed consent was taken from all participants.

## **Results**

A total of 108 nasopharyngeal samples tested positive for SARS-CoV-2 by RT-PCR accounting for 46.75% of cases. The mean duration from symptom onset was  $6.6 \pm 4.3$ . Among positive samples, the COVID-19 antigen (Ag) tests detected 83 out of 108 samples, resulting in a sensitivity of 76.85% (95% CI, 67.75- 84.43). Among negative samples, the COVID-19

Ag test detected all 123 samples as negative. No false positives were detected by any of the Ag tests utilized in this study; however, the false negative rate was 10.8% (25/231). False negative samples had a median Ct of 34 and average duration of onset of symptoms of 11.3 days (range=5-20). The prevalence of positive samples calculated from Biotechnology Research Center lab database during the study period. At 27% SARS-CoV-2 infection prevalence, estimated positive and negative predictive values were 100% and 92.1% (95% CI, 89.23% to 94.28%), respectively.

We evaluated the sensitivity of each antigen test from the first day of symptoms up to 6 days, >7, 7-9, 10-12 and >12 days (Figure 1). In this study, sensitivity and specificity during the first 6 days of symptoms and in samples with high viral loads  $ct < 25$ , was 96.4%. Table 2 shows sensitivity and specificity for each individual test. The median RT-PCR cycle threshold (Ct) value of positive samples was 25. The majority of antigen test platforms had excellent performance during the first 6 days post symptom onset was between 75-100% (table 3).

Three (3/58, 5.2%) patients who were asymptomatic at the time of testing with history of close contact with a confirmed SARS-CoV-2 case tested positive by antigen test. The Cts of their RT-PCR assay were 23,24 and 25 and duration since contact were 5,6 and 10 days respectively. All other asymptomatic cases with exposure were correctly diagnosed as negative. All asymptomatic cases with no history of exposure were also tested negative by Ag test. Among symptomatic patients, the sensitivity was 77%.

We have also observed in our study that more than third of COVID-19 patients (15/41, 36.5%) who presented with loss of smell were not detected by antigen test. In this subgroup, the mean duration since symptoms onset was 12 days and the mean Ct was 34. However, those who had altered smell/taste and tested positive had a mean of 6.6 days since symptoms onset and mean Ct was 25. In few patients, loss of smell/taste was the only symptom (3/41, 7.3%).

Although the recommended time for interpretation ranges between 10-30 minutes, in all samples with  $CT < 25$  the test Line was clearly visible within 2 minutes of application which gave a rough estimation of viral load. When interpreting results after or before the time set by the manufacturer, it was observed that positive test line either faded or became unreadable in most cassette assays. Also, the result interpretation before the end of recommended time was unreliable in cases with low viral load (cycle threshold above 25).

The cycle threshold for nasopharyngeal swab positive samples used for antigen testing and then transferred to VTM for RT-PCR was increased 3-6 cycles in comparison with other direct swabs.

## **Discussion**

Rapid antigen testing is cost-effective, easy to use and can be manufactured in large quantities. The timeliness of results they provided will reduce the load on the diagnostic laboratories. The FDA has authorized 14 SARS-CoV-2 antigen diagnostic tests for emergency use as of 19<sup>th</sup> March, 2021 (“In Vitro Diagnostics EUAs | FDA,” n.d.). Most of these tests are lateral flow assays that can be visually read. We aimed to study rapid antigen tests from different manufacturers to evaluate their performance using time since the onset of symptoms as criteria for testing. This study was also part of pre-implementation evaluation to confirm performance of the tests by RT-PCR.

Our study showed that most Ag-RDTs examined were reliable to diagnose SARS-CoV-2 infection. They demonstrated excellent performance in samples with high viral load  $ct \leq 25$  which are usually samples taken within the first six days after the onset of symptoms. Certest Biotech, Panbio, Rapigen, Acon Ag RDT demonstrated similar results to studies reported by other authors during the first week (Aoki et al., 2021; Linares et al., 2020; Pérez-García et al., 2021). The World health organization recommended the use of SARS-CoV-2 antigen rapid

tests (Ag-RDTs) that meet a minimum sensitivity of  $\geq 80\%$  and  $\geq 97\%$  specificity compared to a nucleic acid amplification test reference assay (World Health Organization (WHO), 2020). All tests showed a specificity of 100 % and sensitivity over 90 % for high viral load samples, with excellent levels of agreement with PCR in 8 out of 10 tests. Two rapid ag tests showed sensitivity below the WHO recommended value.

It is worth emphasizing that interpretation time should not subceed nor exceed the manufacturer's recommended time to avoid false interpretation of the test result. The intensity of test line color is proportionally correlated with viral load. The test line in low viral load samples may appear weak or faint which may not be clearly visible to the reader. Therefore, an additional independent reader is recommended when low viral loads are expected to reduce subjectivity and confirm diagnosis but for most cases one reader is sufficient for interpreting the results. We also don't recommend placing the same nasopharyngeal swab used for antigen test in viral transport media for RT-PCR analysis as the viral material will be diluted and may give false negative results.

Since SARS-CoV-2 cases have been increasing with emergence of new variants (Lauring and Hodcroft, 2021), and numerous antigen tests were manufactured, it is important to evaluate them before implementation. Although there is more risk of developing false negative results after 7 days of symptom onset, this is largely counter-balanced by the rapidity of the test especially when used in targeted population. Our study shows that all COVID-19 Ag tests had a good specificity for SARS-CoV-2 detection in nasopharyngeal swab samples but had a good sensitivity only for cases within 7 days of developing symptoms (higher viral loads).

We proposed a strategy for use of rapid antigen tests in symptomatic patients according to our results and experience as shown in the flowcharts (Fig 2a and b). Although the procedure is relatively easy to perform, testing with Ag-RDTs should be conducted by trained operators

following manufacturer's instructions. Interpretation of the results of rapid antigen tests should consider prevalence of the disease in the community because positive and negative predictive value of any diagnostic test is affected by disease prevalence in the population tested. (World Health Organization (WHO), 2020).

In our medical departments, triage and isolation centers, we have trained medical staff on how to use the antigen test properly, developed criteria for testing (figure 2) and audited the procedure. It is important to note that the use of rapid antigen test requires careful respiratory sample management, waste disposal and biosafety considerations.

The incubation period of SARS-CoV-2 infection was estimated between 3 and 6 days with a median incubation of 4 days (Guan et al, 2020; Meo et al, 2020). Many patients only present to the hospital 6-10 days following symptom onset (Chan et al, 2020). Therefore, missing the opportunity for rapid detection using antigen tests. We consequently emphasize the importance of encouraging patients to seek medical advice and immediate testing as soon as they develop any COVID-19 related symptoms. In particular when patients lose sense of smell, they should be tested immediately, preferably within 24 hrs. because this symptom usually occurs after onset of other COVID-19 symptoms (Chetrit et al., 2020; Salmon Ceron et al., 2020). We also observed in our study that most patients present with loss of smell few days after symptoms onset and in some patients, it was the sole symptom (12 pts with loss of smell came late). We believe that Ag testing will encourage patients to come earlier for testing because of reduction in waiting time.

Viral culture studies in cell lines showed that samples with Ct value  $\geq 34$ ,  $\geq 24$  or  $\geq 38$  and more than 8 days of symptoms onset had no growth and thus might indicate the person is less infectious. (Bullard et al., 2020; La Scola et al., 2020; Wölfel et al., 2020). Thus, there is no agreement about the cut-off Ct value. A positive PCR results reflects only the detection of viral



RNA and not necessarily indicate the presence of viable virus Therefore, false negative results could potentially be non-infectious, increasing the safety margin in the utility of rapid antigen test in cases more than 7 days after start of symptoms and asymptomatic patients.

This study has some limitations. First, the sample size was small for each individual antigen test kit. Second, because the data was collected prospectively based on presence of symptoms or history of contact with infected patient, it was difficult to select patients with different Ct values in enough size. However, if we assumed that the performance of all antigen kits was similar, the data would be reliable enough to give credible results.

Antigen testing performance is mostly affected by symptoms duration, viral load, manufacturing company, operator experience and qualification. In addition, new SARS-COV-2 variants may alter the performance especially with spike proteins targeted antigen tests (Li et al., 2020; Mahase, 2020).

In conclusion, rapid antigen tests have high sensitivity and specificity in early disease when patients present before 7 days of symptom onset. Patients are encouraged to test as soon as they get COVID-19 related symptoms within 1 week and to seek medical advice within 24 hrs. if they develop disturbed smell/taste. The use of rapid antigen tests is important for controlling COVID-19 pandemic and reducing burden on molecular diagnostic laboratories.

### **Acknowledgment**

The authors gratefully acknowledge the support of the Libyan authority for research, science and technology and all lab researchers at Biotechnology Research Center COVID-19 detection team.

### **Conflict of interest**

Authors declare that they have no conflict of interests

### **Ethical approval**

Ethical approval All procedures performed in studies involving human participants were in accordance with the ethical standards of the institutional and/or national research committee and with the 1964 Helsinki declaration and its later amendments or comparable ethical standards. This study was approved by the Biotechnology Research Center Bioethics Committee.

### **Informed consent**

Informed consent was obtained from all individual participants included in the study.

## Tables

Table 1 Characteristics of study patients

Characteristics	No (%)
<b>Gender</b>	
Male	130 (56.2)
Female	101 (43.7)
Age (Mean±SD)	40.8±15.23
Asymptomatic patients with close contact	58 (25)
Days since close contact (Mean±SD)	7.1±3
Asymptomatic no contact	12 (5)
Symptomatic patients	161 (69.6)
Days from symptom onset (Mean±SD)	7±6

Table 2 Sensitivity and specificity of different antigen detection tests

Type of antigen (No. cases)	Detected by RT-PCR	Not-detected by RT-PCR	False negatives	Median CT (Range)	Symptom's duration Days Mean $\pm$ SD	Sensitivity % (Confidence interval)	Specificity % (Confidence interval)	PPV* %	NPV**%	Accuracy* %
<b>FLUORECARE (21)</b>	11	9	1	27.5 (21-34)	5.3 $\pm$ 3.3	91.67 (61.52 - 99.79)	100	100	97.01	97.75
<b>ESPLINE (17)</b>	8	7	2	29.5 (20-37)	6.8 $\pm$ 3.5	80.00 (44.39- 97.48)	100	100	93.11	94.6
<b>RAPIGEN (39)</b>	10	23	6	25 (20-36)	6.4 $\pm$ 3.1	62.50 (35.4- 84.80)	100	100	87.82	89.88
<b>ASSUT (31)</b>	5	24	2	21 (15-29)	5 $\pm$ 3	71.43 (29.04- 96.33)	100	100	90.44	92.29
<b>Orient GENE (22)</b>	5	12	5	31 (16-39)	7.3 $\pm$ 4	50.00 (18.71- 81.29)	100	100	84.39	86.5
<b>AMP (15)</b>	6	8	1	24 (18-37)	6.3 $\pm$ 3.2	85.71 (42.13- 99.64)	100	100	94.98	96.14
<b>ACON (25)</b>	15	10	0	23 (18-37)	6.7 $\pm$ 4.4	100.00 (78.20- 100)	100	100	100	100
<b>ABBOTT (23)</b>	10	10	3	29 (13-38)	9.6 $\pm$ 7	76.92 (46.19- 94.96)	100	100	91.61	93.45
<b>CERTEST BIOTEC (17)</b>	5	9	3	22.7 (19-35)	7 $\pm$ 5	62.50 (24.49- 91.48)	100	100	87.82	89.88
<b>BIOPERFECTUS (21)</b>	8	11	2	21 (14-34)	6.3 $\pm$ 4.5	80.00 (44.39-97.48)	100	100	93.11	94.6
<b>Total=231</b>	83	123	25	25 (13-39.4)	6.6 $\pm$ 4.3	76.85 (67.75- 84.43)	100	100	92.11	93.7

Table 3. Sensitivity of antigen test platforms in patients with symptoms onset  $\leq 6$  days and  $ct \leq 25$ .

Antigen test	Sensitivity % $\leq 6$ days	Sensitivity% $ct \leq 25$
Fluorecare	100	100
Espline	100	100
Rapigen	100	100
Assut*	80	83.3
Orient gene	100	100
AMP*	75	85.7
Acon	100	100
Abbott	100	100
Certest biotec	100	100
Bioperfectus	100	100
Total=91	96.43	96.4

Figure

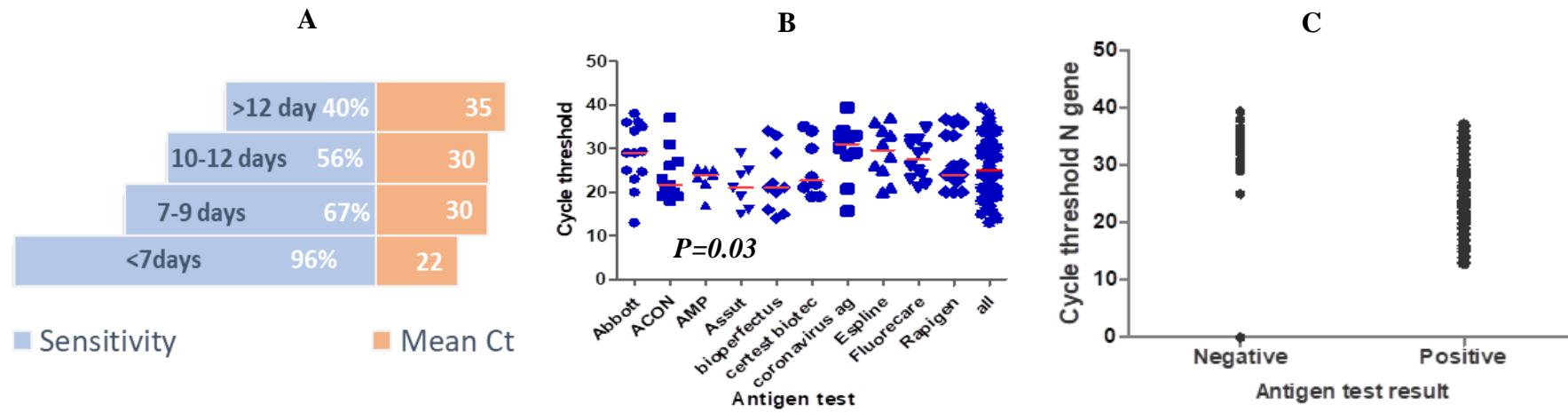
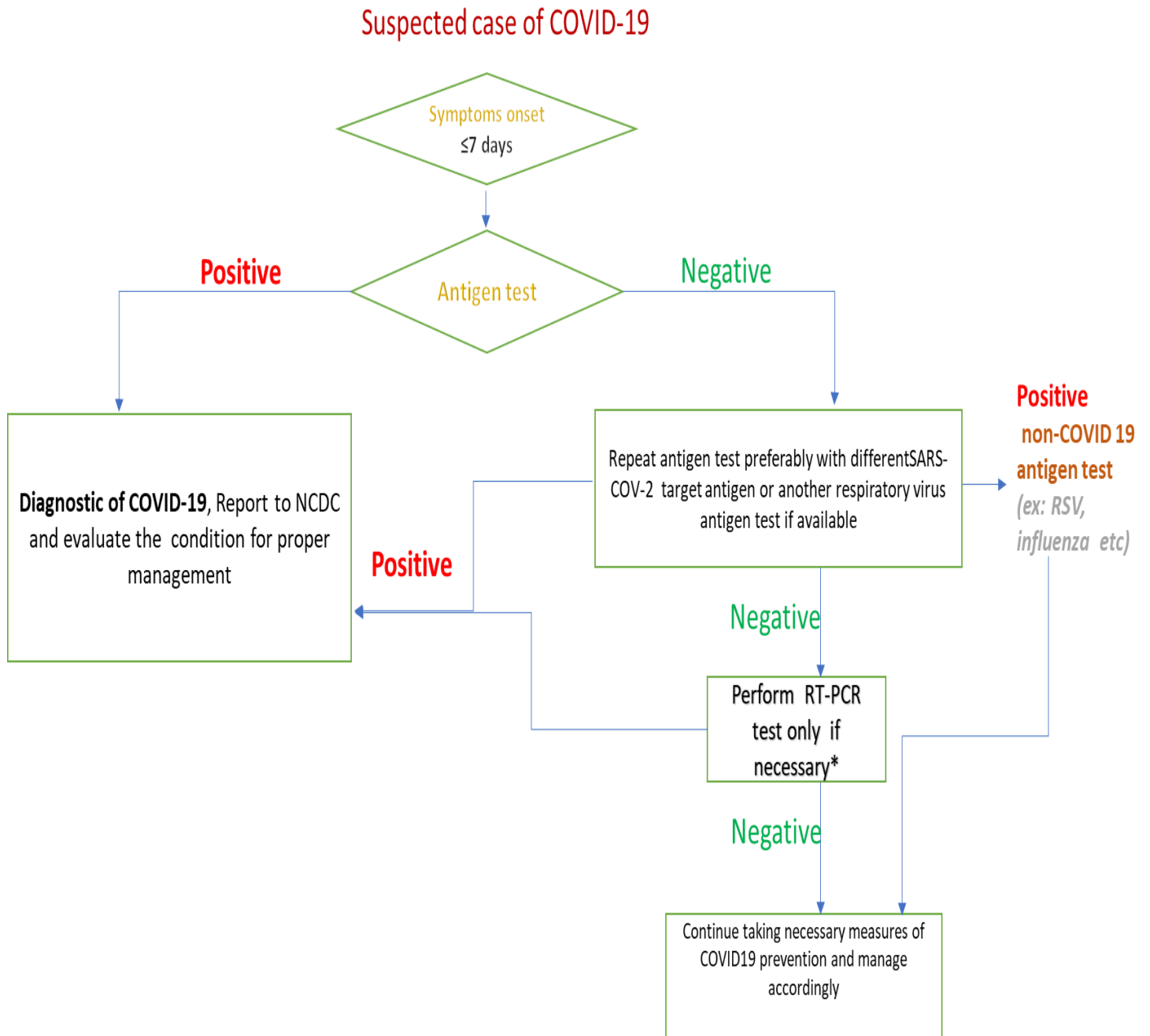


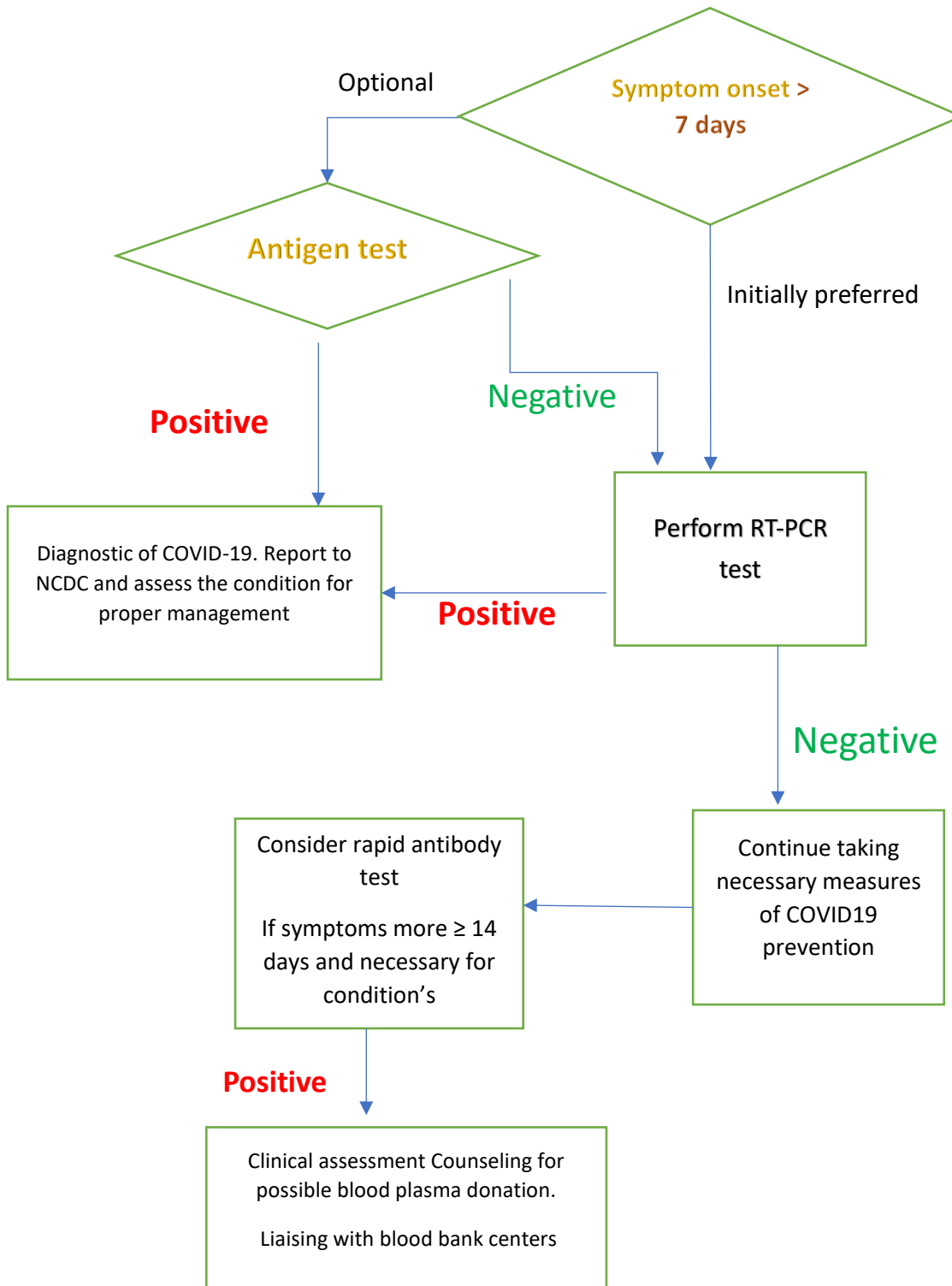
Fig 1. **A.** Mirror chart showing % sensitivity of rapid antigen tests by symptoms onset against corresponding mean Ct. **B** Scatter plot of Ct values of samples in each commercial test (red line =Median). **C.** SARS-CoV-2 antigen test results according to viral load

**Fig 2.A Flowchart of proposed use of rapid antigen tests in suspected COVID-19 cases**



**with symptoms duration within first 7 days.**

## Suspected case of COVID-19



**Fig 2.B Flowchart of proposed use of rapid antigen tests in suspected COVID-19 cases with symptoms duration of more than 7 days.**



## References

- Aoki, K., Nagasawa, T., Ishii, Y., Yagi, S., Kashiwagi, K., Miyazaki, T., Tateda, K., 2021. Evaluation of clinical utility of novel coronavirus antigen detection reagent, Espline® SARS-CoV-2. *J. Infect. Chemother.* 27, 319–322. <https://doi.org/10.1016/j.jiac.2020.11.015>
- Bullard, J., Dust, K., Funk, D., Strong, J.E., Alexander, D., Garnett, L., Boodman, C., Bello, A., Hedley, A., Schiffman, Z., Doan, K., Bastien, N., Li, Y., Van Caesele, P.G., Poliquin, G., 2020. Predicting infectious SARS-CoV-2 from diagnostic samples. *Clin. Infect. Dis.* <https://doi.org/10.1093/cid/ciaa638>
- Chetrit, A., Lechien, J.R., Ammar, A., Chekkoury-Idrissi, Y., Distinguin, L., Circiu, M., Saussez, S., Ballester, M.-C., Vasse, M., Berradja, N., Hans, S., Carlier, R., Edjlali, M., 2020. Magnetic resonance imaging of COVID-19 anosmic patients reveals abnormalities of the olfactory bulb: Preliminary prospective study. *J. Infect.* 81, 816–846. <https://doi.org/10.1016/j.jinf.2020.07.028>
- In Vitro Diagnostics EUAs | FDA [WWW Document], n.d. URL <https://www.fda.gov/medical-devices/coronavirus-disease-2019-covid-19-emergency-use-authorizations-medical-devices/vitro-diagnostics-euas> (accessed 12.24.20).
- La Scola, B., Le Bideau, M., Andreani, J., Hoang, V.T., Grimaldier, C., Colson, P., Gautret, P., Raoult, D., 2020. Viral RNA load as determined by cell culture as a management tool for discharge of SARS-CoV-2 patients from infectious disease wards. *Eur. J. Clin. Microbiol. Infect. Dis.* 39, 1059–1061. <https://doi.org/10.1007/s10096-020-03913-9>
- Lauring, A.S., Hodcroft, E.B., 2021. Genetic Variants of SARS-CoV-2 - What Do They Mean? *JAMA - J. Am. Med. Assoc.* <https://doi.org/10.1001/jama.2020.27124>
- Li, Q., Wu, J., Nie, J., Zhang, Li, Hao, H., Liu, S., Zhao, C., Zhang, Q., Liu, H., Nie, L., Qin, H., Wang, M., Lu, Q., Li, Xiaoyu, Sun, Q., Liu, J., Zhang, Linqi, Li, Xuguang, Huang, W., Wang, Y., 2020. The Impact of Mutations in SARS-CoV-2 Spike on Viral Infectivity and Antigenicity. *Cell* 182, 1284-1294.e9. <https://doi.org/10.1016/j.cell.2020.07.012>
- Linares, M., Pérez-Tanoira, R., Carrero, A., Romanyk, J., Pérez-García, F., Gómez-Herruz, P., Arroyo, T., Cuadros, J., 2020. Panbio antigen rapid test is reliable to diagnose SARS-CoV-2 infection in the first 7 days after the onset of symptoms. *J. Clin. Virol.* 133, 104659. <https://doi.org/10.1016/j.jcv.2020.104659>
- Mahase, E., 2020. Covid-19: Innova lateral flow test is not fit for “test and release” strategy, say experts. *BMJ* 371, m4469. <https://doi.org/10.1136/bmj.m4469>
- MedCalc’s Diagnostic test evaluation calculator [WWW Document], n.d. URL [https://www.medcalc.org/calc/diagnostic\\_test.php](https://www.medcalc.org/calc/diagnostic_test.php) (accessed 1.22.21).
- Pérez-García, F., Romanyk, J., Gómez-Herruz, P., Arroyo, T., Pérez-Tanoira, R., Linares, M., Pérez Ranz, I., Labrador Ballester, A., Moya Gutiérrez, H., Ruiz-Álvarez, M.J., Cuadros-González, J., 2021. Diagnostic performance of CerTest and Panbio antigen rapid diagnostic tests to diagnose SARS-CoV-2 infection. *J. Clin. Virol.* 137. <https://doi.org/10.1016/j.jcv.2021.104781>

Press conference for scientific consultancy committee for coronavirus epidemic in Libya [WWW Document], 2020. URL <https://www.youtube.com/watch?v=C16TxEReuU> (accessed 3.28.21).

Rapid Antigen test [WWW Document], 2020. URL [https://ec.europa.eu/commission/presscorner/detail/en/ip\\_20\\_2483](https://ec.europa.eu/commission/presscorner/detail/en/ip_20_2483)

Salmon Ceron, D., Bartier, S., Hautefort, C., Nguyen, Y., Nevoux, J., Hamel, A.L., Camhi, Y., Canouï-Poitaine, F., Verillaud, B., Slama, D., Haim-Boukoba, S., Sourdeau, E., Cantin, D., Corré, A., Bryn, A., Etienne, N., Rozenberg, F., Layese, R., Papon, J.F., Bequignon, E., 2020. Self-reported loss of smell without nasal obstruction to identify COVID-19. The multicenter Coranosmia cohort study. *J. Infect.* 81, 614–620. <https://doi.org/10.1016/j.jinf.2020.07.005>

Wölfel, R., Corman, V.M., Guggemos, W., Seilmaier, M., Zange, S., Müller, M.A., Niemeyer, D., Jones, T.C., Vollmar, P., Rothe, C., Hoelscher, M., Bleicker, T., Brünink, S., Schneider, J., Ehmann, R., Zwirgmaier, K., Drosten, C., Wendtner, C., 2020. Virological assessment of hospitalized patients with COVID-2019. *Nature* 581. <https://doi.org/10.1038/s41586-020-2196-x>

World Health Organization (WHO), 2020. Antigen-detection in the diagnosis of SARS-CoV-2 infection using rapid immunoassays [WWW Document]. Interim Guid. URL <https://www.who.int/publications/i/item/antigen-detection-in-the-diagnosis-of-sars-cov-2infection-using-rapid-immunoassays> (accessed 3.28.21).