

1  
2  
3  
4  
5  
6  
7  
8  
9  
10  
11  
12  
13  
14  
15  
16  
17  
18  
19

**Cause-specific student absenteeism monitoring**

**in K-12 schools for detection of increased influenza activity**

**in the surrounding community - Dane County, Wisconsin, 2014-2020**

**Short title:** Student absenteeism monitoring for detecting increased influenza activity in surrounding communities

Jonathan L. Temte<sup>1</sup>, MD, PhD, Shari Barlow<sup>1</sup>, BA, Maureen Goss<sup>1</sup>, MPH, Emily Temte<sup>1</sup>, BA, Amber Schemmel<sup>1</sup>, BS, Cristalyne Bell<sup>1</sup>, BS, Erik Reisdorf<sup>2</sup>, MS, Peter Shult<sup>2</sup>, PhD, Mary Wedig<sup>2</sup>, BS, Thomas Haupt<sup>3</sup>, MS, James H. Conway<sup>4</sup>, MD, Ronald Gangnon<sup>5</sup>, PhD, Amra Uzicanin<sup>6</sup>, MD, MPH

<sup>1</sup> Department of Family Medicine and Community Health, University of Wisconsin School of Medicine and Public Health, 1100 Delaplaine Court, Madison, WI 53715 USA

<sup>2</sup> Wisconsin State Laboratory of Hygiene, 2601 Agriculture Drive, Madison, WI 53718 USA

<sup>3</sup> Wisconsin Division of Public Health, Wisconsin Department of Health Services, 1 West Wilson Street, Madison, WI 53703 USA

<sup>4</sup> Department of Pediatrics, Division of Infectious Diseases, University of Wisconsin School of Medicine and Public Health, 600 Highland Avenue, Madison, WI 53792 USA

<sup>5</sup> Department of Biostatistics, University of Wisconsin School of Medicine and Public Health, 750 Highland Avenue Madison, WI 53726 USA

<sup>6</sup> U.S. Centers for Disease Control and Prevention, 1600 Clifton Road Atlanta, GA 30333 USA

20 **Corresponding Author**

21 Cristalyne Bell, Department of Family Medicine and Community Health, University of

22 Wisconsin School of Medicine and Public Health, 1100 Delaplaine Court, Madison, WI 53715,

23 Cristalyne.bell@fammed.wisc.edu, 608-720-8004

24 **Word Count** 3,579

25 **References:** 30

26 **Tables:** 4

27 **Figures:** 5

28 **References:** 30

29 **ABSTRACT**

30 **Background:** Schools are primary venues of influenza amplification with secondary spread to  
31 communities. We assessed K-12 student absenteeism monitoring as a means for early detection  
32 of influenza activity in the community.

33 **Materials and Methods:** Between September 2014 and March 2020, we conducted a  
34 prospective observational study of all-cause (a-TOT), illness-associated (a-I), and influenza-like  
35 illness-associated (a-ILI) absenteeism within the Oregon School District (OSD), Dane County,  
36 Wisconsin. Absenteeism was reported through the electronic student information system.  
37 Students were visited at home where pharyngeal specimens were collected for influenza RT-PCR  
38 testing. Surveillance of medically-attended laboratory-confirmed influenza (MAI) occurred in  
39 five primary care clinics in and adjoining OSD. Poisson general additive log linear regression  
40 models of daily counts of absenteeism and MAI were compared using correlation analysis.

41 **Findings:** Influenza was detected in 723 of 2,378 visited students, and in 1,327 of 4,903 MAI  
42 patients. Over six influenza seasons, a-ILI was significantly correlated with MAI in the  
43 community ( $r = 0.57$ ; 95% CI: 0.53—0.63) with a one-day lead time and a-I was significantly  
44 correlated with MAI in the community ( $r = 0.49$ ; 0.44-0.54) with a 10-day lead time, while a-  
45 TOT performed poorly ( $r = 0.27$ ; 0.21—0.33), following MAI by six days.

46 **Discussion:** Surveillance using cause-specific absenteeism was feasible and performed well over  
47 a study period marked by diverse presentations of seasonal influenza. Monitoring a-I and a-ILI  
48 can provide early warning of seasonal influenza in time for community mitigation efforts.

## 49 INTRODUCTION

50 Seasonal influenza contributes to widespread individual and societal costs. Infection causes  
51 school and work absenteeism, medical visitation, hospitalization, and death, with direct and  
52 indirect costs between \$6.3 and \$25.3 billion annually in the United States.[1] Although school-  
53 aged children have the highest rates of medically-attended influenza (MAI) [2], they have  
54 relatively low rates of hospitalization and death.[3] Nevertheless, influenza is a primary driver of  
55 school absenteeism for students; medically-attended acute respiratory infection (ARI) due to  
56 influenza accounts for nearly 50% of school days missed due to ARI.[4]

57 Monitoring and surveillance systems for seasonal and pandemic influenza provide situational  
58 awareness for public health interventions and health system preparedness, assessment of timing  
59 and intensity of outbreaks, and virological characterization.[5] These systems typically involve  
60 evaluations of influenza-like illness (ILI) prevalence, rates of MAI and hospitalization, results of  
61 laboratory testing, and estimates of mortality.[2,3] Accordingly, surveillance systems are usually  
62 based in more populated areas supporting the necessary healthcare infrastructure.

63 Because of generally high influenza attack rates in school-aged children [2], significant linkages  
64 between MAI and school absenteeism [4], and the purported role of transmission and  
65 amplification of influenza in schools [6], use of cause-specific absenteeism may provide a useful  
66 and inexpensive complementary method for influenza monitoring and early warning of school-  
67 based as well as community-wide outbreaks. Absenteeism data are routinely collected within  
68 14,000 US school districts.[7] A functional and generalizable system could provide wide  
69 geographic coverage for influenza monitoring efforts, particularly in resource-scarce  
70 jurisdictions.

71 Starting with the first report relating school absenteeism to an influenza outbreak in 1958 [8],  
72 there have been numerous attempts to evaluate school absenteeism for detecting accelerated  
73 spread of seasonal and pandemic influenza within communities.[9-14] For example, comparisons  
74 performed during the 2009 influenza A(H1N1) pandemic provided promisingly high correlation  
75 ( $r=0.92$ ) between ILI-related absenteeism and weekly counts of hospitalized influenza cases.[14]  
76 The autumnal pandemic outbreak, however, provided very strong signals in both absenteeism  
77 and hospitalization which are not representative of typical outbreaks of seasonal influenza.

78 The goal of the ORegon CHild Absenteeism due to Respiratory Disease Study (ORCHARDS) is  
79 to develop and implement a replicable system for daily school-based monitoring of ILI-specific  
80 student absenteeism in kindergarten through grade 12 (K-12) schools, and to assess the system's  
81 usability for early detection of accelerated influenza and other respiratory pathogen transmission  
82 in schools and surrounding communities.[15] In this paper, we discuss the relationship between  
83 student absenteeism and MAI in surrounding communities.

## 84 **MATERIALS AND METHODS**

85 The complete, detailed methodology for ORCHARDS has been published elsewhere.[15]  
86 Briefly, ORCHARDS is based in the Oregon School District (OSD: [www.oregonsd.org](http://www.oregonsd.org)), which  
87 includes the villages of Oregon and Brooklyn, located in a semi-rural area of Dane County,  
88 Wisconsin. The district comprises three elementary schools (grade K-4)—two in Oregon and one  
89 in Brooklyn—with 1,503 students, one intermediate school (grade 5-6) with 623 students, one  
90 middle school (grade 7-8) with 596 students, and one high school (grade 9-12) with 1,145  
91 students, all located in Oregon.[16]

92 Data collection for this study commenced with the start of the 2014-2015 academic year, on  
93 September 2, 2014, and concluded with the closure of OSD schools related to the emerging  
94 SARS-CoV-2 pandemic after March 13, 2020. Data collection occurred over six academic years  
95 and six sequential influenza seasons, marked by significant diversity in the dominant influenza  
96 types and subtypes, outbreak intensity, and timing of outbreaks relative to the academic calendar  
97 (Table 1).

#### 98 Absenteeism reporting system

99 OSD utilizes Infinite Campus® (<https://www.infinitecampus.com>), a commercially available  
100 electronic student information system, to track attendance. Parents/guardians report their child's  
101 absences to school attendance staff by calling an automated telephone system. Callers are  
102 prompted to provide the student's name and reason for absence, including symptoms if the child  
103 has a cold or flu-like illness. Uniform messaging is provided on each school's absentee lines with  
104 additional information pertaining to ILI symptoms:

105 *“Please inform us if your child has any flu-like symptoms such as fever with*  
106 *cough, sneezing, chills, sore throat, body aches, fatigue, runny nose, and/or stuffy*  
107 *nose.”*

108 Subsequently, school attendance staff members identify a student and record a reason for  
109 absence from a modifiable, drop-down pick list. To facilitate this study, the OSD Information  
110 Technology (IT) staff added “Absent due to influenza-like illness” (a-ILI) to existing categories  
111 of student absenteeism in Infinite Campus®.

112 For this study, we define absenteeism for an individual student as being absent for the entire day  
113 or any part of the day. This definition provides simplicity and generalizability for electronic data  
114 retrieval. All-cause or total absenteeism (a-TOT) is defined as an absence for any reason.

115 Absence due to illness (a-I) is an absence due to any reported illness. Absence due to ILI (a-ILI)  
116 is a subset of a-I for which ILI symptoms are reported by the parent/caregiver when calling the  
117 school absenteeism telephone line. We considered several established definitions for ILI.[17,18]  
118 For ease of recognition by school attendance staff without medical backgrounds, however, ILI  
119 was defined as the presence of fever and at least one respiratory tract symptom (cough, chest  
120 congestion, sore throat, scratchy throat, sneezing, runny nose, nasal discharge, nasal stuffiness,  
121 or nasal congestion).

122 OSD IT staff created automated processes within Infinite Campus® to extract daily counts of  
123 absent students by school, grade, and absence type (a-TOT, a-I, and a-ILI). The data contain no  
124 personal identifiers and are fully compliant with the Family Educational Rights and Privacy Act  
125 (FERPA: 20 U.S.C. § 1232g; 34 CFR Part 99).[19] The data are sent to a secure file transfer  
126 protocol (ftp) site at the University of Wisconsin Department of Family Medicine and  
127 Community Health, as illustrated in Figure 1.

### 128 Laboratory assessment of influenza and other respiratory viruses

129 Laboratory-supported data to evaluate the role of influenza on a-ILI status were collected for  
130 OSD students who opted to participate in ORCHARDS.[15] Briefly, 2,378 home visits were  
131 conducted during the study period for children who met criteria for ARI. Absenteeism was not  
132 required for a home visit to occur. A nasal swab specimen was obtained for testing using the  
133 Quidel Sofia Influenza A+B fluorescent immunoassay

134 (<https://www.quidel.com/immunoassays/rapid-influenza-tests/sofia-influenza-fia>) by  
135 ORCHARDS staff. In addition, a high oropharyngeal or nasopharyngeal swab was collected for  
136 testing with influenza RT-PCR [in-vitro diagnostic (IVD) FDA-approved CDC Human Influenza  
137 Virus Real-time RT-PCR Diagnostic Panel (Cat.# FluiVD03)] [20] and a respiratory pathogen  
138 panel [21] at the Wisconsin State Laboratory of Hygiene (WSLH).

### 139 Assessment of community MAI

140 An independent and long-standing influenza surveillance system was used to assess MAI in and  
141 around OSD. The Optional Influenza Surveillance Enhancements/Wisconsin Influenza Incidence  
142 Surveillance Project is sponsored by the Centers for Disease Control and Prevention (CDC) and  
143 conducts prospective, active surveillance for influenza and other respiratory viruses in medically-  
144 attended patients with ARI or ILI. The ORCHARDS research team organizes this surveillance  
145 system.[2,22] Active surveillance occurs at five family medicine clinics within or adjoining the  
146 OSD. Specific clinic locations include Belleville, Oregon, Madison (2 sites), and Verona (Figure  
147 2). Together, the clinics recorded 412,752 ambulatory visits between June 29, 2014, and June 29,  
148 2019, and assessed 4,903 individual ARI patients. Each assessed ARI patient was tested using an  
149 on-site rapid influenza diagnostic test, and by influenza RT-PCR [20] and a multiplexed PCR  
150 respiratory pathogen panel [21] performed at WSLH.

### 151 Data analyses

152 We assessed the relationship between a-ILI status (outcome) and influenza (exposure) in the  
153 subset of students who had a home visit and who could be absent from school, thus excluding  
154 students who were home-schooled or had illness episodes on weekend days, vacation days,  
155 school closure days, or during the summer. Students were classified as a-ILI if they were absent



156 and had fever plus one respiratory tract symptom (cough, sore throat, nasal congestion, or runny  
157 nose) as reported during the home visit. The odds ratio for meeting the a-ILI definition given  
158 laboratory-confirmed influenza, compared to a-ILI occurring in the absence of influenza was  
159 calculated using standard logistic regression methods.

160 A generalized additive quasi-Poisson log-linear regression model was fit to the daily counts of  
161 MAI from surrounding surveillance clinics as a function of calendar date represented using a  
162 thin-plate regression spline and day of the week represented using dummy variables.[23,24]  
163 Similarly, generalized additive quasi-Poisson log-linear regression models were fit to daily  
164 counts of three absenteeism categories (a-TOT, a-I and a-ILI) as a function of calendar date  
165 represented using a thin-plate regression spline and day of the week represented using dummy  
166 variables.

167 Sample cross-correlation functions were calculated between the (square-root) daily number of  
168 medically attended influenza cases and lagged (or leading) (square-root) daily absenteeism  
169 counts from three sources (a-TOT, a-I, a-ILI) for each school year individually and for all school  
170 years combined. The optimal lag (or lead) resulting in the maximum cross-correlation was  
171 identified for each absenteeism series.

#### 172 IRB and project oversight

173 All components of this proposed study were reviewed and approved by the Human Subjects  
174 Committees of the Education and Social/Behavioral Sciences IRB (initial approval on September  
175 4, 2013; ID number: 2013-1268) and the University of Wisconsin Health Sciences-IRB (initial  
176 approval on December 5, 2013, with additional approvals as the protocol expanded and  
177 modified; ID number: 2013-1357). The study is in full compliance with the Health Insurance

178 Portability and Accountability Act of 1996 (HIPAA), FERPA, and all other federally mandated  
179 human subjects regulations. The US Office of Management and Budget has approved all forms  
180 used in this study.

181 Per the cooperative agreement, the CDC project officer (AU) assisted with study design,  
182 interpretation of data, writing of this report, and in the decision to submit the paper for  
183 publication.

## 184 **RESULTS**

### 185 Absenteeism

186 We monitored 3,738,562 potential student-days over six academic years. During this period,  
187 enrollment at OSD slowly increased from 3,588 to 3,887 students (Table 2). Absenteeism was  
188 relatively stable over six years with a-TOT, a-I and a-ILI accounting for 357,054 (9.6%), 68,809  
189 (1.8%) and 8,161 (0.22%) of total potential student days, respectively. Percentages for a-I and a-  
190 ILI in 2019-2020 were elevated due to the abrupt and early end of in-person instruction and  
191 absence recording after March 13, 2020 during the influenza season. Categories of recorded  
192 absenteeism had varying relationships with grade, with a-TOT increasing ( $r=0.924$ ;  $P<0.001$ )  
193 and a-ILI declining with grade level ( $r=-0.945$ ;  $P<0.001$ ). No such effects were seen for a-I ( $r=-$   
194  $0.498$ ;  $P=0.083$ ) (Figure 3).

### 195 Medically attended influenza

196 Throughout the study period, 4,903 ARI patients were evaluated for influenza at the five  
197 surveillance clinics (Table 3). MAI was confirmed by PCR for 1,327 (27.1%) individual patient  
198 encounters, with influenza A noted in 943 (19.2%) and influenza B present in 385 (7.9%)

199 encounters. One adult patient was positive for both influenza A and B. The prevalence of  
200 influenza in ARI patients and the relative distribution of influenza types varied across the six-  
201 year study period. The percentage of ARI patients with MAI varied between 17.9% in 2015-2016  
202 and 39.6% in 2019-2020. Influenza B comprised between 5.4% of MAI in 2018-2019 and 48.4%  
203 in 2017-2018.

204 There were 386 (29.1%) MAI cases in school-aged children (ages 5—18 years) and 941 (70.9%)  
205 MAI cases in younger children (ages 0—4 years) and adults (ages  $\geq 19$  years) combined. The  
206 mean dates of MAI cases were similar between the school-aged children and other individuals. A  
207 significant difference in timing (Mann-Whiney;  $P=0.031$ ) was noted for only one season (2014-  
208 2015), during which MAI in school-aged children occurred 16 days later than for other  
209 individuals.

#### 210 Timing of absenteeism and MAI

211 The relative timing of a-TOT, a-I, a-ILI and MAI over the entire six-year time series are  
212 provided in Figure 4. Longer breaks (e.g., winter, spring, and summer) are easily seen in the  
213 graphic. Total absenteeism (a-TOT) shows less day-to-day variability than a-I and a-ILI. As  
214 expected, MAI demonstrates distinct seasonality, with influenza cases primarily occurring in the  
215 winter and early spring.

#### 216 Relationship between influenza detection and a-ILI status

217 Of 2,378 home visits conducted with ORCHARDS participants, 2,143 (90%) occurred at times  
218 when absenteeism was possible. Of those, 1,214 (57%) met the criteria for a-ILI and 639 (30%)  
219 students had laboratory-confirmed influenza (Table 4). There was a significant association

220 between a-ILI and influenza ( $X^2 = 244.2$ ; d.f. = 1;  $P < 0.0001$ ) and the odds ratio for meeting a-ILI  
221 criteria if influenza was detected was 5.52 (95% CI: 4.40—6.93).

### 222 Relationship between absenteeism and MAI

223 For all academic years/influenza seasons combined, a-TOT was positively correlated with MAI  
224 with a maximum correlation of 0.27 (95% CI: 0.21—0.33) achieved when a-TOT followed MAI  
225 by six days (Figure 5); the maximum correlation with a-TOT preceding MAI was 0.21 (0.15-  
226 0.27) with a lead of one day. a-I had a stronger positive correlation with MAI, with a maximum  
227 correlation of 0.49 (0.44-0.54) when leading MAI by 10 days. a-ILI had the strongest positive  
228 correlation with MAI, with a maximum correlation of 0.57 (0.53-0.63) when leading MAI by one  
229 day.

230 For individual school years/influenza seasons, the maximum correlation (lagging or leading)  
231 between a-TOT and MAI varied from 0.20 (0.05-0.34) when trailing MAI by 11 days in 2017-  
232 2018 to 0.39 (0.23-0.47) when trailing MAI by six days in 2019-2020. When restricted to  
233 evaluations for a-TOT preceding MAI only, the range was 0.09 (-0.06-0.23) with a lead of four  
234 days in 2017-2018 to 0.39 (0.23-0.53) with a lead of eight days in 2019-2020. The maximum  
235 correlation between a-I and MAI varied from 0.34 (0.21-0.47) while preceding MAI by 13 days  
236 in 2015-2016 to 0.71 (0.61-0.79) while preceding MAI by seven days in 2019-2020. When  
237 restricted to evaluations for a-I preceding MAI only, the range was the same. Finally, maximum  
238 correlation between a-ILI and MAI varied between 0.48 (0.36-0.58) while trailing MAI by three  
239 days in 2015-2016 and 0.82 (0.75-0.87) while trailing MAI by seven days in 2019-2020. When  
240 restricted to evaluations for a-ILI preceding MAI only, the range was 0.46 (0.33-0.57) with a  
241 lead of one day in 2015-2016 to 0.80 (0.73-0.86) with a lead of one day in 2019-2020. For all six

242 seasons, however, significant, positive cross-correlations were achieved for a-I and a-ILI at least  
243 14 days in advance of MAI (Figure 5). Moreover, in every season, cross-correlations with MAI  
244 were higher for a-I and a-ILI than for a-TOT; in all but 2014-2015, cross-correlations with MAI  
245 were higher for a-ILI than for a-I.

246 Dividing a-ILI data into two subsets, namely grades K-4 and grades 5-12, did not improve  
247 correlations. For all school years/influenza seasons combined, maximal correlations for a-ILI (K-  
248 4) and a-ILI (5-12) were 0.52 and 0.58 at lags, respectively.

## 249 **DISCUSSION**

250 Cause-specific daily K-12 absenteeism within a school district mirrors MAI in surrounding  
251 communities. Absenteeism due to ILI (a-ILI) and absenteeism due illness (a-I) demonstrated  
252 strong and moderate positive correlations with MAI, respectively, over a period of six  
253 consecutive influenza seasons. The maximal correlations either led (a-I) or occurred  
254 coincidentally (a-ILI) with MAI. Moreover, as time frames are shifted, significant correlations  
255 are demonstrated between cause-specific absenteeism (a-ILI and a-I) and MAI well in advance  
256 of MAI in all cases. Accordingly, results from this six-year study support the hypothesis that  
257 cause-specific school absenteeism monitoring can provide timely and potentially advance  
258 identification of community outbreaks of seasonal influenza. As more stringent criteria are  
259 applied to evaluate absenteeism (e.g., a-I and a-ILI), there are increasing correlations with  
260 community levels of influenza. Accordingly, a-ILI may be seen as having a relatively higher  
261 specificity for community outbreaks of influenza. A less specific criterion (a-I) may be more  
262 sensitive for influenza with a composite time lag for the maximum correlation estimated at minus

263 six days. In general, all-cause absenteeism (a-TOT) performed less well for identifying influenza  
264 in the community.

265 The absenteeism monitoring tool used in ORCHARDS [15] has performed well since inception,  
266 retrieving and transmitting data from 1,001 consecutive school days with minimal maintenance.  
267 Given that absenteeism is widely monitored across school districts, student information systems  
268 are commonly employed in the K-12 environment, and a simple enhancement allowed for  
269 accurate ILI data capture and anonymized electronic file transfer, this approach may be  
270 generalizable to many of the nearly 14,000 school districts in the United States.[8] Widespread  
271 use of K-12 school-based absenteeism monitoring may augment MAI surveillance where  
272 available and could fill in geospatial gaps where MAI surveillance is not available. The  
273 composite of all grades (K-12) appeared to perform better than subsets of younger or older  
274 children.

275 The strength of correlations for individual outbreaks of influenza appears to follow the intensity  
276 of the influenza season. The most significant influenza seasons experienced by the OSD and the  
277 surveillance clinics (2017-2018 and 2019-2020) resulted in very high maximal correlations  
278 ( $r=0.64$  and  $0.82$ , respectively) between a-ILI and MAI. This supports potential benefit of cause-  
279 based absenteeism in monitoring systems for pandemic influenza.

280 There have been multiple efforts to assess the utility of monitoring absenteeism of children as an  
281 indicator of influenza in the community.[9-14,25,26] Many reports have been based on all-cause  
282 absenteeism.[9-11,25,26] Whereas monitoring all-cause absenteeism is appealing and intuitive  
283 due to the routine collection of this metric, significant problems abound due to “noise” within a-  
284 TOT resulting from the multi-factorial nature of absenteeism.[9,26] On any given day, an

285 estimated 7.8% of American school children, or 4.3 million children, are absent.[27] Some are  
286 absent due to illness; a subset of these ill children are absent due to respiratory infections. As a-  
287 ILI comprised between 1.7-2.9% of total annual absenteeism in our study, the signal from  
288 influenza may be obscured. The Pennsylvania Influenza Sentinel School Monitoring System  
289 illustrated this concept during the 2009 influenza pandemic.[9] Poor correlation ( $r=0.10$ ;  $P=0.56$ )  
290 was noted between all-cause absenteeism and statewide laboratory-confirmed influenza. For  
291 ORCHARDS, a-TOT performed poorer than a-I or a-ILI, with an overall maximal correlation of  
292 0.27, and lagging behind community MAI by six days.

293 There are very few examples of utilization of cause-specific absenteeism for detection of  
294 influenza. One study from the 2009 influenza pandemic demonstrated poor ( $r=0.33$ ), high  
295 ( $r=0.63$ ), and very high ( $r=0.92$ ) correlation between confirmed influenza hospitalizations and  
296 all-cause absenteeism, ILI health office visits, and ILI-related absenteeism, respectively.[14]  
297 Likewise, ORCHARDS demonstrated lower correlation for a-TOT ( $r=0.39$ ) and very high  
298 correlation for a-ILI ( $r=0.82$ ) during 2019-2020, a year characterized by a prolonged and severe  
299 seasonal influenza outbreak. The combination of multiple years in ORCHARDS provides a more  
300 robust assessment of cause-specific absenteeism. In all years, a-I demonstrated higher maximal  
301 correlation than a-TOT; in all but one school year a-ILI demonstrated higher correlation than a-I.

302 We are aware of a single example of the use of automated reporting of absenteeism data for  
303 influenza monitoring. A smart card reader was employed to capture attendance at 107 schools in  
304 Hong Kong, allowing for near real-time reporting.[28] Implementation of this system, using  
305 routinely-collected information, was found to be feasible and acceptable. This study also  
306 reported a modest maximal cross-correlation coefficient between ILI-specific absenteeism and

307 hospital laboratory-confirmed influenza (CCC=0.434) with a three-week lag. The results,  
308 however, are not directly comparable to ORCHARDS due to differences in ascertainment of a-  
309 ILI status and use of hospital vs. outpatient assessment of MAI.

310 Following cessation of in-person instruction due to the SARS-CoV-2 pandemic, OSD did not  
311 monitor student absenteeism between March 16, 2020 and the end of the academic year on June  
312 5, 2020. Absenteeism monitoring resumed on September 9, 2021, with a hybrid teaching model.  
313 An initial analysis of data available suggests that COVID-19-related absenteeism may provide an  
314 early warning of SARS-CoV-2 activity in the surrounding community.[29]

315 Our study had several limitations. First, ORCHARDS is limited to a single, relatively small  
316 school district that is more affluent, less diverse, and better educated than the US average.[30] In  
317 addition, OSD parents were engaged with this study and many of the study personnel have long-  
318 term involvement within the community. Second, OSD had an existing telephone absenteeism  
319 reporting system with messaging dating back to the 2009 influenza pandemic. Accordingly,  
320 parents and guardians were attuned to reporting respiratory symptoms. The transition to ILI  
321 reporting was a small change in usual procedure. Third, OSD had sufficient IT staff skills to  
322 allow programming for autonomous data reporting. Fourth, we used a modified ILI definition for  
323 ease of recognition by the attendance staff. Although different from other ILI definitions [17,18],  
324 a-ILI as defined in ORCHARDS was highly associated with laboratory-confirmed influenza.[15]

325 This study also has notable strengths. First, there have been excellent community acceptance and  
326 participation in all aspects of ORCHARDS as evidenced by students participating in 2,378 home  
327 visits, thus allowing for validation of the a-ILI as a marker of influenza. Second, reporting of  
328 absenteeism into the telephone system by parents/guardians has not decreased over time. Third,



329 ORCHARDS is a longitudinal, multiyear study. This extended, six-year time frame encompasses  
330 a diversity of influenza in terms of type and subtype, proportionality of types, seasonal intensity,  
331 and timing of influenza activity relative to the academic calendar. Moreover, results in  
332 ORCHARDS were not biased by the significant signal emanating from an influenza pandemic.  
333 Fourth, ORCHARDS was enhanced by the existence of a longstanding and highly functional  
334 clinic-based MAI surveillance system based within and surrounding the OSD. Finally, we  
335 utilized a robust statistical method to assess the patterns of MAI and absenteeism, comparing  
336 daily levels across six influenza seasons.

337 In conclusion, cause-specific absenteeism monitoring in K-12 schools identified community  
338 influenza outbreaks with high reliability across six distinct and diverse influenza seasons. The  
339 timing of periods of increased absenteeism either preceded or coincided with MAI in  
340 surrounding communities. The fully automated monitoring system was easily implemented and  
341 maintained and performed consistently over a six-year period. Accordingly, school-based, cause-  
342 specific and near real-time absenteeism monitoring can contribute to the timely detection of  
343 influenza in the community, thus allowing for mitigation efforts. As school absenteeism  
344 monitoring is a common feature of schools and school districts across the United States, this  
345 approach has the potential to enhance influenza surveillance efforts, especially in low-resource  
346 areas, and provide early warnings for outbreak identification and containment.

## 347 **DECLARATIONS**

### 348 **Ethics approval and consent to participate**

349 All components of this proposed study were reviewed and approved by the Human Subjects  
350 Committees of the Education and Social/Behavioral Sciences IRB (initial approval on September

351 4, 2013) and the University of Wisconsin Health Sciences-IRB (initial approval on December 5,  
352 2013, with additional approvals as the protocol expanded and modified). The study is in full  
353 compliance with the Health Insurance Portability and Accountability Act of 1996 (HIPAA),  
354 FERPA, and all other federally mandated human subjects regulations. The US Office of  
355 Management and Budget has approved all forms used in this study.

### 356 **Availability of data and materials**

357 The datasets generated and/or analyzed during the current study are not publicly available  
358 because the study is ongoing, but may be available from the corresponding author on reasonable  
359 request.

### 360 **Competing interests**

361 Dr. Jonathan Temte has received financial and material support from Quidel Corporation. Dr.  
362 John Tamerius and Quidel Corporation have generously supplied RIDT analyzers and tests.

### 363 **Funding**

364 This study has been supported by CDC through the cooperative agreement # 5U01CK000542-  
365 02-00. The findings and conclusions in this study are those of the authors and do not necessarily  
366 represent the official position of the Centers for Disease Control and Prevention.

### 367 **ACKNOWLEDGMENTS**

368 We would like to acknowledge Dr. Yenlik Zheteyeva, MD, MPH, formerly of CDC's Division  
369 of Global Migration and Quarantine, for her contributions to the study design and  
370 implementation. We are also grateful to Ms. Ashley Fowlkes, MPH, of CDC's Influenza  
371 Division for her assistance in accessing and interpreting the OISE/IISP data for the purpose of

372 this study. We thank Cecilia He, Caroline Hamer, Bradley Maerz, Lily Comp, Mitchell Arnold,  
373 Kimberly Breunig, and Sarah Clifford for their assistance with data collection and Rich Griesser,  
374 Tim Davis, Tonya Danz, and Erika Hanson (Virology Laboratory Staff at the Wisconsin State  
375 Laboratory of Hygiene) for their assistance with specimen testing throughout ORCHARDS.  
376 Special thanks for Dr. Brian Bussler, Superintendent, Jon Tanner, Information Technology  
377 Director, and the attendance staff at OSD. Finally, a multitude of student participants of  
378 ORCHARDS and their families made this research possible.

379 **REFERENCES**

- 380 1. Putri WCWS, Muscatello DJ, Stockwell MS, Newall AT. Economic burden of seasonal  
381 influenza in the United States. *Vaccine* 2018;36(27):3960-3966. doi:  
382 10.1016/j.vaccine.2018.05.057.
- 383 2. Fowlkes A, Steffens A, Temte J et al; Influenza Incidence Surveillance Project Working  
384 Group. Incidence of medically attended influenza during pandemic and post-pandemic seasons  
385 through the Influenza Incidence Surveillance Project, 2009-13. *Lancet Respir Med.* 2015  
386 Sep;3(9):709-18.
- 387 3. Centers for Disease Control and Prevention. FluView - Weekly U.S. Influenza Surveillance  
388 Report. Accessed 10/16/2020 at: <https://www.cdc.gov/flu/weekly/index.htm>.
- 389 4. McLean HQ, Peterson SH, King JP, Meece JK, Belongia EA. School absenteeism among  
390 school-aged children with medically attended acute viral respiratory illness during three  
391 influenza seasons, 2012-2013 through 2014-2015. *Influenza Other Respir Viruses.*  
392 2017;11(3):220–229. doi:10.1111/irv.12440.
- 393 5. Qualls N, Levitt A, Kanade N, Wright-Jegade N, Dopson S, Biggerstaff M, Reed C, Uzicanin  
394 A; CDC Community Mitigation Guidelines Work Group. Community mitigation guidelines to  
395 prevent pandemic influenza - United States, 2017. *MMWR Recomm Rep.* 2017 Apr 21;66(1):1-  
396 34. doi: 10.15585/mmwr.rr6601a1.
- 397 6. Russell ES, Zheteyeva Y, Gao H, et al. Reactive school closure during increased influenza-  
398 like illness (ILI) Activity in Western Kentucky, 2013: A field evaluation of effect on ILI

- 399 incidence and economic and social consequences for families. *Open Forum Infect Dis.*  
400 2016;3(3):ofw113. Published 2016 May 25. doi:10.1093/ofid/ofw113.
- 401 7. National Center for Education Statistics. Table 98. Number of public school districts and  
402 public and private elementary and secondary schools: Selected years, 1869-70 through 2010-11.  
403 Accessed 10/16/2020 at: [https://nces.ed.gov/programs/digest/d12/tables/dt12\\_098.asp](https://nces.ed.gov/programs/digest/d12/tables/dt12_098.asp).
- 404 8. Harboe A, Juul K. Absenteeism of school children in Norwegian towns during Asian influenza  
405 epidemic. *Tidsskr Nor Laegeforen.* 1958 Sep 15;78(18):887-90.
- 406 9. Besculides M, Heffernan R, Mostashari F, Weiss D. Evaluation of school absenteeism data for  
407 early outbreak detection, New York City. *BMC Public Health.* 2005 Oct 7;5:105.
- 408 10. Short VL, Marriott CK, Ostroff S, Waller K. Description and evaluation of the 2009-2010  
409 Pennsylvania Influenza Sentinel School Monitoring System. *Am J Public Health.* 2011  
410 Nov;101(11):2178-83.
- 411 11. Kara EO, Elliot AJ, Bagnall H, Foord DG, Pnaiser R, Osman H, Smith GE, Olowokure B.  
412 Absenteeism in schools during the 2009 influenza A(H1N1) pandemic: a useful tool for early  
413 detection of influenza activity in the community? *Epidemiol Infect.* 2012 Jul;140(7):1328-36.
- 414 12. Kom Mogto CA, De Serres G, Douville Fradet M, Lebel G, Toutant S, Gilca R, Ouakki M,  
415 Janjua NZ, Skowronski DM. School absenteeism as an adjunct surveillance indicator:  
416 Experience during the second wave of the 2009 H1N1 pandemic in Quebec, Canada. *PLoS One.*  
417 2012;7(3):e34084.

- 418 13. Lau EH, Cheng CK, Ip DK, Cowling BJ. Situational awareness of influenza activity based on  
419 multiple streams of surveillance data using multivariate dynamic linear model. *PLoS One*.  
420 2012;7(5):e38346.
- 421 14. Williams NJ, Ghosh TS, Bisgard KM, Vogt RL. Comparison of 3 school-based influenza  
422 surveillance indicators: lessons learned from 2009 pandemic influenza A (H1N1)-Denver  
423 Metropolitan Region, Colorado. *J Public Health Manag Pract*. 2013 Mar;19(2):119-25.
- 424 15. Temte JL, Barlow S, Goss M, et al. The Oregon Child Absenteeism Due to Respiratory  
425 Disease Study (ORCHARDS): Rationale, Objectives, and Design. Preprint. MedRxiv 2021:  
426 2021.02.01.21250878.
- 427 16. Wisconsin Department of Public Instruction. Wisconsin Information System for Education  
428 data Dashboard. Accessed 10/16/2020 at: <https://wisedash.dpi.wi.gov/Dashboard/portalHome.jsp>
- 429 17. Thomas RE. Is influenza-like illness a useful concept and an appropriate test of influenza  
430 vaccine effectiveness? *Vaccine*. 2014 Apr 17;32(19):2143-9. doi: 10.1016/j.vaccine.2014.02.059.
- 431 18. Casalegno JS, Eibach D, Valette M, Enouf V, Daviaud I, Behillil S, Vabret A, Soulayr JC,  
432 Benchaib M, Cohen JM, van der Werf S, Mosnier A, Lina B. Performance of influenza case  
433 definitions for influenza community surveillance: based on the French influenza surveillance  
434 network GROG, 2009-2014. *Euro Surveill*. 2017 Apr 6;22(14). pii: 30504. doi: 10.2807/1560-  
435 7917.ES.2017.22.14.30504.
- 436 19. U.S. Department of Education. Family Educational Rights and Privacy Act (FERPA).  
437 Accessed 10/16/2020 at: <https://www2.ed.gov/policy/gen/guid/fpco/ferpa/index.html>

- 438 20. CDC (2011) CDC Human Influenza Virus Real-time RT-PCR Diagnostic Panel. Package  
439 Insert LB-029, R-0.
- 440 21. Luminex. NxTAG® Respiratory Pathogen Panel. Accessed 10/20/2019 at:  
441 <https://www.luminexcorp.com/nxtag-respiratory-pathogen-panel/#overview>.
- 442 22. Fowlkes A, Dasgupta S, Chao E, Lemmings J, Goodin K, Harris M, Martin K, Feist M, Wu  
443 W, Boulton R, Temte J, Brammer L, Finelli L. Estimating influenza incidence and rates of  
444 influenza-like illness in the outpatient setting. *Influenza Other Respi Viruses*. 2013; 7(5): 694–  
445 700.
- 446 23. Wood SN. Generalized Additive Models: An Introduction with R. Chapman & Hall/CRC).  
447 2006.
- 448 24. Brown PJ. Measurement, Regression and Calibration. *Oxford University Press*. 1994.
- 449 25. Aldridge RW, Hayward AC, Field N, Warren-Gash C, Smith C, Pebody R, Fleming D,  
450 McCracken S, Are school absences correlated with influenza surveillance data in England?  
451 Results from Decipher My Data-A Research Project conducted through scientific engagement  
452 with schools. *PLoS One*. 2016;11(3):e0146964. doi: 10.1371/journal.pone.0146964.
- 453 26. Ma T, Englund H, Bjelkmar P, Wallensten A, Hulth A. Syndromic surveillance of influenza  
454 activity in Sweden: an evaluation of three tools. *Epidemiol Infect*. 2015 Aug;143(11):2390-8.  
455 doi: 10.1017/S0950268814003240.
- 456 27. National Center for Education Statistics. Average daily attendance (ADA) as a percentage of  
457 total enrollment, school day length, and school year length in public schools, by school level and

458 state: 2003-04 and 2007-08. Accessed 10/16/2020 at:

459 [https://nces.ed.gov/programs/digest/d11/tables/dt11\\_043.asp](https://nces.ed.gov/programs/digest/d11/tables/dt11_043.asp).

460 28. Ip DK, Lau EH, So HC, Xiao J, Lam CK, Fang VJ, Tam YH, Leung GM, Cowling BJ. A

461 smart card-based electronic school absenteeism system for influenza-like illness surveillance in

462 Hong Kong: Design, implementation, and feasibility assessment. *JMIR Public Health Surveill.*

463 2017 Oct 6;3(4):e67. doi: 10.2196/publichealth.6810.

464 29. Temte JL, Barlow S, Goss M, Temte E, Bell C, Uzicanin A. COVID-19-related school

465 absenteeism precedes community cases of SARS-CoV-2. [Under review at *Pediatrics*].

466 30. United States Census. Quick Facts. Accessed 10/16/2020 at:

467 <https://www.census.gov/quickfacts/oregonvillagewisconsin>.



468 **Table 1.** Dominant influenza types and subtypes across six influenza seasons, along with  
 469 outbreak severity and timing

	2014-2015	2015-2016	2016-2017	2017-2018	2018-2019	2019-2020
Dominant influenza type/subtype <sup>1</sup>	A(H3)	A(H1)	A(H3)	A(H3)	A(H1) A(H3)	B (early) A(H1) (late)
Other influenza in circulation <sup>1</sup>	late B	with B	with B	with B	minimal B	minimal A(H3)
Outbreak severity <sup>1</sup>	moderately severe	low	moderate	severe	moderate	moderately severe
Wisconsin Outbreak peak timing <sup>2</sup>	Dec/Jan	Mar	Feb	Jan/Feb	Mar	Feb

470 <sup>1</sup>Characterization of influenza season based on data presented by Centers for Disease Control  
 471 and Prevention. FluView - Weekly U.S. Influenza Surveillance Report. Accessed 10/16/2020 at:  
 472 <https://www.cdc.gov/flu/weekly/index.htm>

473 <sup>2</sup>Wisconsin outbreak timing based on peak PCR detections reported by Wisconsin State  
 474 Laboratory of Hygiene. Influenza Activity. Accessed 11/23/2020 at:  
 475 <http://www.slh.wisc.edu/wcln-surveillance/surveillance/virology-surveillance/influenza-activity/>

476 **Table 2.** School enrollment estimates and student absenteeism by defined type\* and school year -  
 477 Oregon School District, Dane County, Wisconsin: 2014-2020.

	<b>2014- 2015</b>	<b>2015- 2016</b>	<b>2016- 2017</b>	<b>2017- 2018</b>	<b>2018- 2019</b>	<b>2019- 2020<sup>†</sup></b>
<b>SCHOOL ENROLMENT</b>						
Total Estimated Enrollment**	3,588	3,713	3,749	3,828	3,867	3,887
Total Curricular Days	176	177	175	176	174	123
Total Possible Student Days	629,024	635,076	649,775	673,728	672,858	478,101
<b>STUDENT ABSENTEEISM</b>						
a-TOT Days (% of total)	56,477 (8.98%)	55,871 (8.80%)	56,511 (8.70%)	63,476 (9.42%)	69,092 (10.26%)	55,627 (11.63%)
<i>Average Daily a-TOT</i> <i>(std. dev.)</i>	320.9 (78.4)	315.7 (79.2)	322.9 (80.4)	360.7 (96.3)	397.1 (106.2)	452.3 (118.0)
a-I Days (% of total)	12,024 (1.91%)	12,158 (1.91%)	11,922 (1.83%)	11,710 (1.74%)	10,312 (1.53%)	10,683 (2.23%)

<i>Average Daily a-I</i>	68.3	68.7	68.1	66.5	59.3	86.9
<i>(std. dev.)</i>	(39.0)	(27.0)	(27.0)	(30.1)	(21.7)	(39.0)
a-ILI Days	1,314	1,609	1,309	1,261	1,141	1,527
(% of total)	(0.21%)	(0.25%)	(0.20%)	(0.19%)	(0.17%)	(0.32%)
<i>Average Daily a-ILI</i>	7.5	9.1	7.5	7.2	6.6	12.4
<i>(std. dev.)</i>	(7.3)	(6.6)	(5.9)	(5.8)	(5.5)	(13.7)

478 \*Defined types of absenteeism: a-TOT = absent for any reason; a-I = absent due to illness; a-ILI  
 479 = absent due to influenza-like illness.

480 \*\*Total estimated enrollment excluding pre-kindergarten students (for whom absenteeism data is  
 481 not submitted). Data extracted from: Wisconsin Department of Public Instruction, Wisconsin  
 482 Information System for Education data Dashboard;  
 483 <https://wisedash.dpi.wi.gov/Dashboard/portalHome.jsp>

484 †Early termination of the school year due to SARS-CoV-2 on March 13, 2020.

485 **Table 3.** Acute respiratory infection (ARI) cases evaluated and numbers of influenza A and B  
 486 cases detected across six influenza seasons at five influenza surveillance clinics,\* Dane County,  
 487 Wisconsin.

	<b>2014-2015</b>	<b>2015-2016</b>	<b>2016-2017</b>	<b>2017-2018</b>	<b>2018-2019</b>	<b>2019- 2020<sup>†</sup></b>
<b>All Ages</b>						
ARI Cases Evaluated	986	698	708	1,033	645	833
Influenza A**	170	106	95	230	141	201
Influenza B**	78	19	46	102	8	132
Total Influenza (% of ARI)	248 (25.2%)	125 (17.9%)	141 (19.9%)	332 (32.1%)	149 (23.1%)	332 (39.9%)
Mean date of influenza	1/25/2015	3/04/2016	3/02/2017	2/06/2018	2/28/2019	2/07/2020
<b>Age 5-18 years</b>						
ARI Cases Evaluated (% of all ages)	157 (15.9%)	132 (18.9%)	142 (20.1%)	225 (21.8%)	130 (20.2%)	236 (28.3%)

Influenza A**	37	17	29	59	42	50
Influenza B**	12	7	14	39	4	76
Total Influenza (% of ARI)	49 (31.2%)	24 (18.2%)	43 (30.3%)	98 (43.6%)	46 (35.4%)	126 (53.4%)
Mean date of influenza	1/28/2015	3/03/2016	3/03/2017	2/07/2018	2/28/2019	2/07/2020
<b>Ages 0-4 years and ≥19 years</b>						
ARI Cases Evaluated (% of all ages)	829 (84.1%)	566 (81.1%)	566 (79.9%)	808 (78.2%)	515 (79.8%)	597 (71.7%)
Influenza A**	133	89	66	171	99	151
Influenza B**	66	12	32	63	4	56
Total Influenza (% of ARI)	199 (24.0%)	101 (17.8%)	98 (17.3%)	234 (29.0%)	103 (20.0%)	206 (34.5%)
Mean date of influenza	1/12/2014	3/08/2015	3/01/2016	2/04/2017	2/27/2019	2/06/2020

488 Data are shown for all ages, school-aged children (age 5-18 years) and non-school-aged  
489 individuals (ages 0-4 and  $\geq 19$  years). Mean dates of medically attended influenza are provided  
490 for each group and in season.

491 \*All surveillance clinics are family medicine clinics affiliated with the University of Wisconsin  
492 and provide care to patients of all ages.

493 \*\*Influenza type is based on testing using CDC Human Influenza Virus Real-time RT-PCR  
494 Diagnostic Panel.[20]

495 †Clinic visits through March 20, 2020.

496 **Table 4.** Relationship between influenza laboratory detection and absence with influenza-like  
497 illness (a-ILI) in a cohort of students visited at home. Oregon School District, Dane County,  
498 Wisconsin. Chi-square for association = 244.2 (d.f. = 1; P<0.001). Odds Ratio for meeting a-ILI  
499 criteria with exposure to influenza = 5.521 (95% CI: 4.399-6.929)

	<b>Outcome</b>			
		a-ILI	Not a-ILI	Total
<b>Exposure</b>	Influenza (+)	526	113	639
	Influenza (-)	688	816	1,504
	Total	1,214	929	2,143

500

501 **Figure 1.** Flow diagram of absenteeism data from telephone reporting by parents/guardians, to  
502 entry into the student information system at the Oregon School District, to data transfer to the  
503 ORCHARDS research team.

504 **Figure 2.** Location of the Oregon School District (OSD) in the Villages of Oregon and Brooklyn  
505 in South Central Wisconsin. The red dots depict locations of family medicine clinics that  
506 participate in long-term surveillance of medically-attended influenza.

507 **Figure 3.** Total absentee counts, by grade level, across entire study for a-ILI, a-I and a-TOT.  
508 Defined types of absenteeism: a-TOT = absent for any reason; a-I = absent due to illness; a-ILI =  
509 absent due to influenza-like illness.

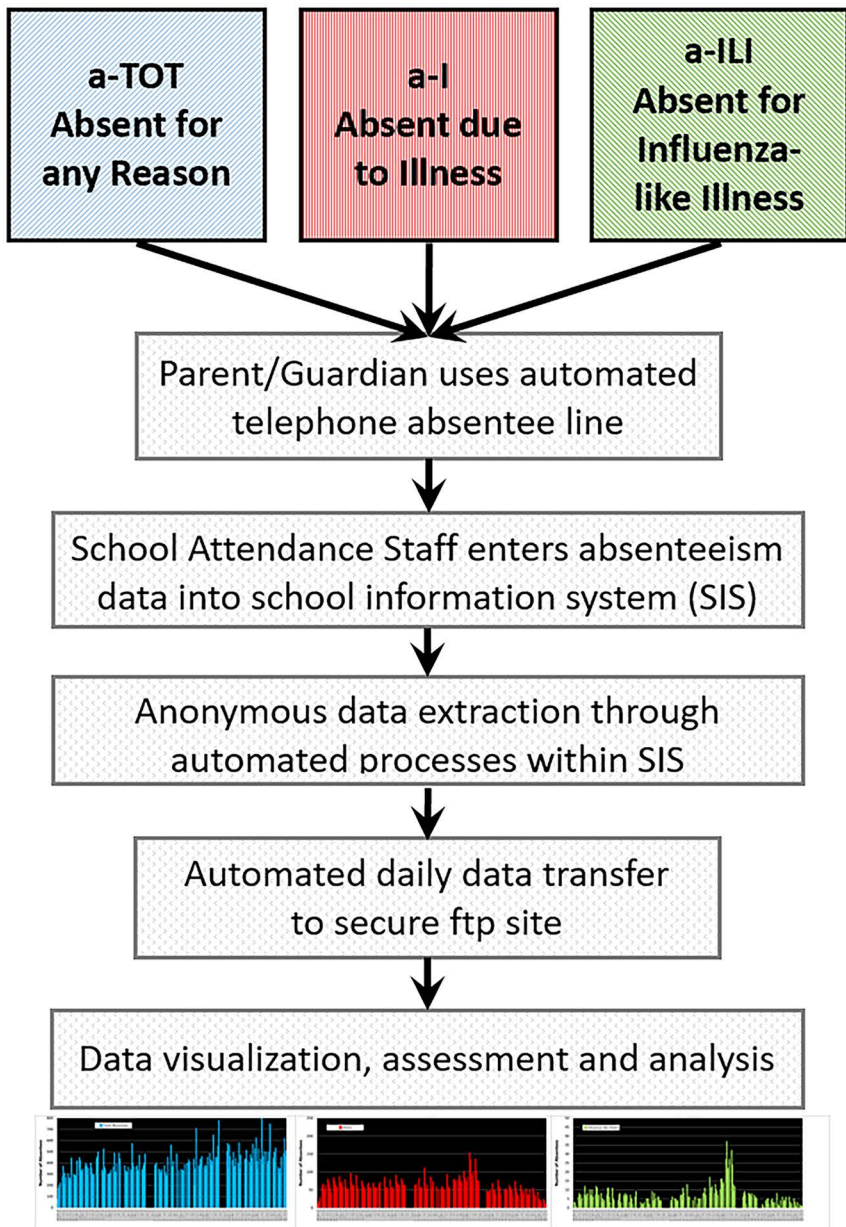
510 **Figure 4.** Numbers of daily student absences in each of three categories (a-TOT = absent for any  
511 reason, a-I = absent due to illness and a-ILI = absent due to influenza-like illness) and number of  
512 all-age medically-attended influenza (MAI) cases in surrounding communities during six school  
513 years/influenza seasons. The black line is the estimated mean number of daily events from a  
514 generalized additive quasi-Poisson regression model with calendar date (thin-plate spline) and  
515 day of week (dummy variables) as predictors. Gaps in the fitted curves represent breaks in the  
516 school calendar.

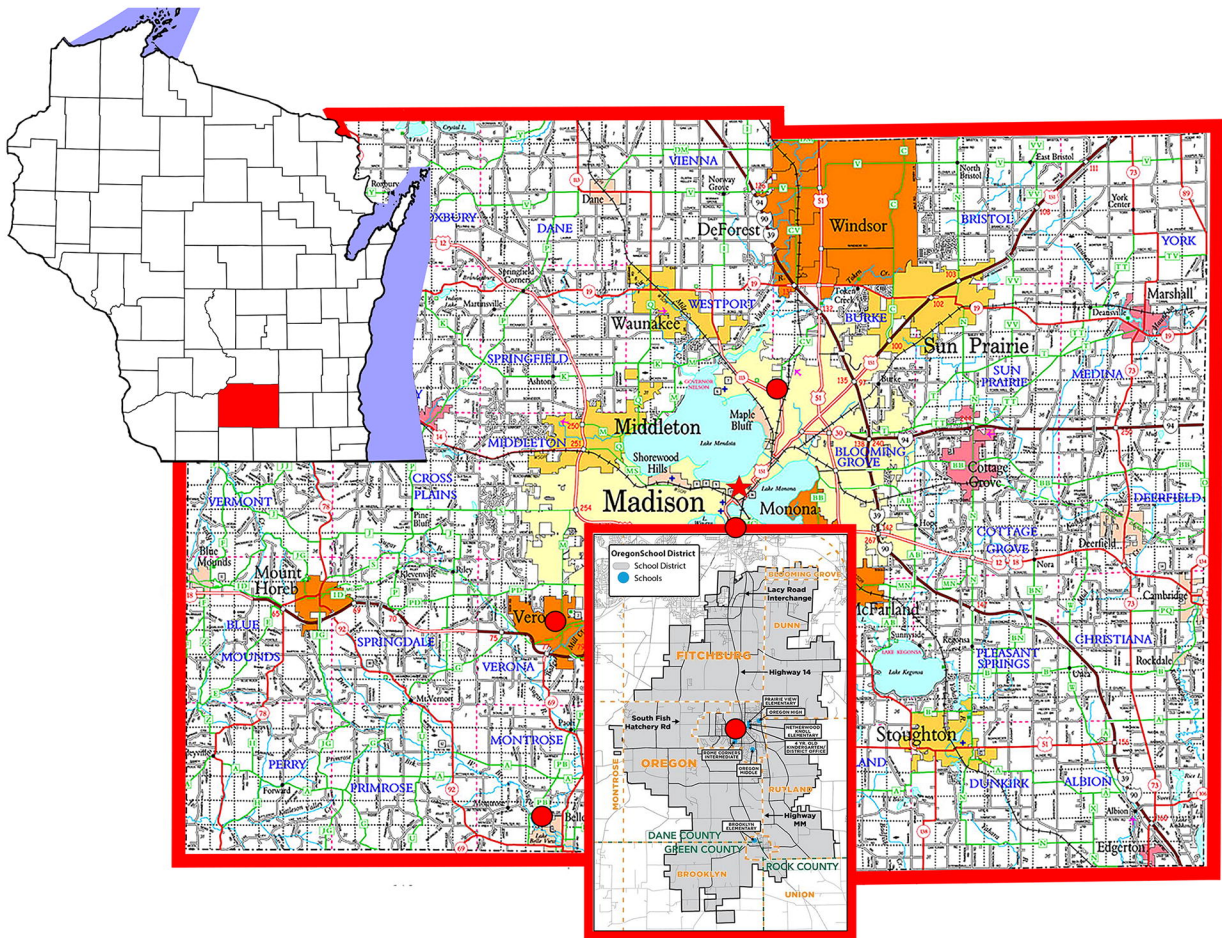
517 **Figure 5.** Cross-correlation functions (estimate and 95% confidence interval) for square-root  
518 daily absenteeism counts and square-root medically-attended influenza (MAI) counts for all six  
519 school years/influenza seasons combined (top row) and for each school year/influenza season.  
520 Results are shown for total absenteeism (a-TOT; first column), absenteeism due to illness (a-I;  
521 second column) and absenteeism due to influenza-like illness (a-ILI; third column). Negative

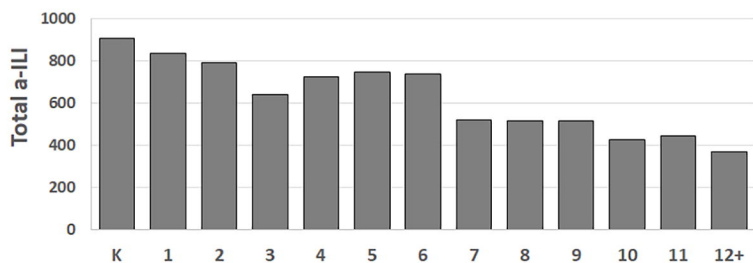
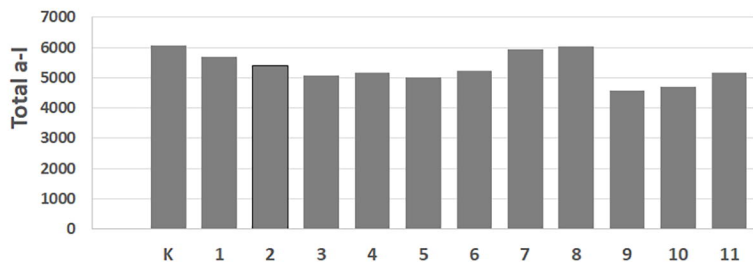


522 lag/lead indicates absenteeism preceding MAI, while positive lag/lead indicates MAI preceding  
523 absenteeism. The maximal correlation for absenteeism preceding MAI is highlighted in blue; if  
524 different, the maximum correlation over the entire time frame (-14 days to +14 days) is  
525 highlighted in red.

526





**a.****a-ILI****b.****a-l****c.****a-TOT**