

**CONFIDENTIAL – NOT FOR DISTRIBUTION**  
**24 JUL 2021**

1 **Effectiveness of BNT162b2 and mRNA-1273 COVID-19 vaccines against symptomatic**  
2 **SARS-CoV-2 infection and severe COVID-19 outcomes in Ontario, Canada: a test-negative**  
3 **design study**

4  
5 **Authors:** Hannah Chung MPH<sup>1</sup>, Siyi He MSc<sup>1</sup>, Sharifa Nasreen PhD<sup>1</sup>, Maria E. Sundaram  
6 PhD<sup>1,2</sup>, Sarah A. Buchan PhD<sup>1,2,3,4</sup>, Sarah E. Wilson MD MSc<sup>1,2,3,4</sup>, Branson Chen MSc<sup>1</sup>,  
7 Andrew Calzavara MSc<sup>1</sup>, Deshayne B. Fell PhD<sup>1,5,6</sup>, Peter C. Austin PhD<sup>1,7</sup>, Kumanan Wilson  
8 MD MSc<sup>8</sup>, Kevin L. Schwartz MD MSc<sup>1,2,3</sup>, Kevin A. Brown PhD<sup>1,2,3</sup>, Jonathan B. Gubbay MD  
9 MSc<sup>3</sup>, Nicole E. Basta PhD<sup>9</sup>, Salaheddin M. Mahmud MD PhD<sup>10</sup>, Christiaan H. Righolt PhD<sup>10</sup>,  
10 Lawrence W. Svenson PhD<sup>11,12,13,14</sup>, Shannon E. MacDonald PhD<sup>13,15</sup>, Naveed Z. Janjua  
11 DrPH<sup>16,17</sup>, Mina Tadrous PharmD PhD<sup>1,18</sup>, and Jeffrey C. Kwong MD MSc<sup>1,2,3,4,19,20</sup> on behalf of  
12 the Canadian Immunization Research Network (CIRN) Provincial Collaborative Network (PCN)  
13 Investigators

14  
15 **Affiliations:**

16 <sup>1</sup> ICES, Toronto, ON

17 <sup>2</sup> Dalla Lana School of Public Health, University of Toronto, Toronto, ON

18 <sup>3</sup> Public Health Ontario, ON

19 <sup>4</sup> Centre for Vaccine Preventable Diseases, University of Toronto, Toronto, ON

20 <sup>5</sup> School of Epidemiology and Public Health, University of Ottawa, ON

21 <sup>6</sup> Children's Hospital of Eastern Ontario Research Institute, Ottawa, ON

22 <sup>7</sup> Institute of Health Policy, Management and Evaluation, University of Toronto, Toronto, ON

**CONFIDENTIAL – NOT FOR DISTRIBUTION**  
**24 JUL 2021**

23 <sup>8</sup> Department of Medicine, University of Ottawa, Ottawa and Bruyere Hospital Research

24 Institutes, Ottawa, ON

25 <sup>9</sup> Department of Epidemiology, Biostatistics, and Occupational Health, School of Population and

26 Global Health, McGill University, Montreal, QC

27 <sup>10</sup> Vaccine and Drug Evaluation Centre, Department of Community Health Sciences, University

28 of Manitoba, Winnipeg, MB

29 <sup>11</sup> Analytics and Performance Reporting Branch, Alberta Health, Edmonton, AB

30 <sup>12</sup> Division of Preventive Medicine, Faculty of Medicine and Dentistry, University of Alberta,

31 Edmonton, AB

32 <sup>13</sup> School of Public Health, University of Alberta, Edmonton, AB

33 <sup>14</sup> Department of Community Health Sciences, Cumming School of Medicine, University of

34 Calgary, Calgary, AB

35 <sup>15</sup> Faculty of Nursing, University of Alberta, Edmonton, AB

36 <sup>16</sup> British Columbia Centre for Disease Control, Vancouver, BC

37 <sup>17</sup> School of Population and Public Health, University of British Columbia, Vancouver, BC

38 <sup>18</sup> Women's College Hospital, Toronto, ON

39 <sup>19</sup> Department of Family and Community Medicine, University of Toronto, Toronto, ON

40 <sup>20</sup> University Health Network, Toronto, ON

41

42 **Corresponding author:**

43 Jeff Kwong

44 Senior Scientist, ICES

45 G1 06, 2075 Bayview Avenue, Toronto, Ontario, Canada, M4N 3M5

**CONFIDENTIAL – NOT FOR DISTRIBUTION**  
**24 JUL 2021**

- 46 jeff.kwong@utoronto.ca
- 47 Phone: (416) 480-4055 x1-7665
- 48 Fax: (416) 480-6048
- 49
- 50 Abstract word count: 299
- 51 Manuscript word count: 3896
- 52 Tables/Figures: 6
- 53 References: 43

CONFIDENTIAL

**CONFIDENTIAL – NOT FOR DISTRIBUTION**  
**24 JUL 2021**

54 **ABSTRACT:**

55 **Objectives:** To estimate the effectiveness of mRNA COVID-19 vaccines against symptomatic  
56 infection and severe outcomes.

57 **Design:** We applied a test-negative design study to linked laboratory, vaccination, and health  
58 administrative databases, and used multivariable logistic regression adjusting for demographic  
59 and clinical characteristics associated with SARS-CoV-2 and vaccine receipt to estimate vaccine  
60 effectiveness (VE) against symptomatic infection and severe outcomes.

61 **Setting:** Ontario, Canada between 14 December 2020 and 19 April 2021.

62 **Participants:** Community-dwelling adults aged  $\geq 16$  years who had COVID-19 symptoms and  
63 were tested for SARS-CoV-2.

64 **Interventions:** Pfizer-BioNTech's BNT162b2 or Moderna's mRNA-1273 vaccine.

65 **Main outcome measures:** Laboratory-confirmed SARS-CoV-2 by RT-PCR;  
66 hospitalization/death associated with SARS-CoV-2 infection.

67 **Results:** Among 324,033 symptomatic individuals, 53,270 (16.4%) were positive for SARS-  
68 CoV-2 and 21,272 (6.6%) received  $\geq 1$  vaccine dose. Among test-positive cases, 2,479 (4.7%)  
69 had a severe outcome. VE against symptomatic infection  $\geq 14$  days after receiving only 1 dose  
70 was 60% (95%CI, 57 to 64%), increasing from 48% (95%CI, 41 to 54%) at 14–20 days after the  
71 first dose to 71% (95%CI, 63 to 78%) at 35–41 days. VE  $\geq 7$  days after 2 doses was 91%  
72 (95%CI, 89 to 93%). Against severe outcomes, VE  $\geq 14$  days after 1 dose was 70% (95%CI, 60  
73 to 77%), increasing from 62% (95%CI, 44 to 75%) at 14–20 days to 91% (95%CI, 73 to 97%) at  
74  $\geq 35$  days, whereas VE  $\geq 7$  days after 2 doses was 98% (95%CI, 88 to 100%). For adults aged  $\geq 70$   
75 years, VE estimates were lower for intervals shortly after receiving 1 dose, but were comparable

**CONFIDENTIAL – NOT FOR DISTRIBUTION**  
**24 JUL 2021**

76 to younger adults for all intervals after 28 days. After 2 doses, we observed high VE against  
77 E484K-positive variants.

78 **Conclusions:** Two doses of mRNA COVID-19 vaccines are highly effective against  
79 symptomatic infection and severe outcomes. Single-dose effectiveness is lower, particularly for  
80 older adults shortly after the first dose.

CONFIDENTIAL

**CONFIDENTIAL – NOT FOR DISTRIBUTION**  
**24 JUL 2021**

81 **INTRODUCTION**

82 Understanding how clinical trial efficacy estimates of COVID-19 vaccines translate into real-  
83 world effectiveness estimates is crucial, given differences in populations, dosing intervals, and  
84 emerging variants.[1] Due to COVID-19 vaccine supply constraints, Canada’s National Advisory  
85 Committee on Immunization (NACI) recommended extending the interval between doses to a  
86 maximum of 16 weeks.[2] With vaccine supply constraints globally, determining the  
87 effectiveness of these vaccines following a single dose vs. two doses is important for informing  
88 policy for many countries.[1]

89 We applied the test-negative design to linked, population-based health databases in  
90 Ontario, Canada (population 15 million) to evaluate vaccine effectiveness (VE) against  
91 symptomatic SARS-CoV-2 infection and severe outcomes (i.e., hospitalization or death  
92 associated with SARS-CoV-2 infection) for two mRNA vaccines (Pfizer-BioNTech’s  
93 BNT162b2 and Moderna’s mRNA-1273).

94  
95 **METHODS**

96 **Study population, setting, and design**

97 We conducted a test-negative design study among community-dwelling Ontarians who had  
98 symptoms consistent with COVID-19. The test-negative design is comparable to a nested case-  
99 control design, with symptomatic individuals who are tested for the presence of a pathogen of  
100 interest serving as the nesting cohort.[1,3,4] All Ontarians aged  $\geq 16$  years, eligible for provincial  
101 health insurance, not living in long-term care, and who were tested for SARS-CoV-2 between 14  
102 December 2020 and 19 April 2021 were eligible for inclusion. We excluded individuals who  
103 tested positive for SARS-CoV-2 prior to 14 December 2020 and recipients of the ChAdOx1

**CONFIDENTIAL – NOT FOR DISTRIBUTION**  
**24 JUL 2021**

104 vaccine. We restricted the analysis to individuals who had at least one relevant COVID-19  
105 symptom (based on self-report or observation [e.g., measured temperature]) at the time of  
106 testing, which was collected on the SARS-CoV-2 test requisition (see **Supplementary**  
107 **Methods**). Although these individuals and other members of the general public contributed in  
108 important ways to this research, it was not feasible to involve study subjects or the public in the  
109 design, conduct, reporting, or dissemination plans of our research.

110  
111 **Data sources and definitions**

112 We linked data from provincial SARS-CoV-2 laboratory testing, COVID-19 vaccination, and  
113 health administrative datasets using unique encoded identifiers and analyzed them at ICES  
114 (formerly the Institute for Clinical Evaluative Sciences).

115  
116 *Outcomes*

117 Our first primary outcome was symptomatic SARS-CoV-2 infection, ascertained by real-time  
118 reverse transcription polymerase chain reaction (RT-PCR) tests on respiratory specimens,  
119 including nasopharyngeal (most common), nasal, throat, saliva, and turbinate.[5] Using data  
120 from the Ontario Laboratories Information System (OLIS), which captured 91.8% (n=258,207)  
121 of all provincially reported cases of laboratory-confirmed COVID-19 (n=281,261) during the  
122 study period, test-positive individuals were treated as cases and test-negative individuals were  
123 treated as controls. Since symptom onset dates were inconsistently reported in OLIS, we used the  
124 specimen collection date as the index date. For cases with multiple positive tests, we used the  
125 date of their first positive test. For controls with multiple negative tests, we used the date of a  
126 randomly selected negative test as the index date.

**CONFIDENTIAL – NOT FOR DISTRIBUTION**  
**24 JUL 2021**

127  
128 We obtained information on variants and mutations from the Public Health Case and Contact  
129 Management system (CCM), which contains information on the clinical course of cases and the  
130 results of screening tests for N501Y and E484K mutations and whole genome sequencing results  
131 that identify specific variant of concern (VOC) lineages (Alpha [B.1.1.7], Beta [B.1.351],  
132 Gamma [P.1]). All RT-PCR-positive specimens with cycle threshold values  $\leq 35$  were tested for  
133 the N501Y mutation (starting 3 February 2021) and the E484K mutation (starting 22 March  
134 2021).[6] We considered samples with positive N501Y and negative E484K mutations as Alpha ,  
135 and samples with positive N501Y and E484K mutations as Beta or Gamma. We combined the  
136 latter two lineages for our analysis because there were very small numbers of cases identified  
137 using whole genome sequencing.

138  
139 Our second primary outcome was severe disease associated with symptomatic SARS-CoV-2  
140 infection, defined as either hospitalization or death with a recent positive test, using the earliest  
141 of the specimen collection date or the hospitalization or death date as the index date. We  
142 identified these outcomes using CCM (for both hospitalizations and deaths), the Canadian  
143 Institute for Health Information's Discharge Abstract Database (DAD; for hospitalizations), and  
144 the Ontario Registered Persons Database (RPDB; for deaths). For hospitalizations identified  
145 using DAD, a positive test must have occurred within 14 days prior to or 3 days after admission.  
146 For deaths identified using RPDB, a positive test must have occurred within 30 days prior to  
147 death or within 7 days post-mortem. We used the same control group as the first primary  
148 outcome analysis (i.e., symptomatic individuals who tested negative for SARS-CoV-2).

149



**CONFIDENTIAL – NOT FOR DISTRIBUTION**  
**24 JUL 2021**

150 *COVID-19 vaccination*

151 BNT162b2 became available in Ontario on 14 December 2020, and mRNA-1273 on 28  
152 December 2020.[7] The initial vaccination phase prioritized high-risk populations such as older  
153 adults living in congregate settings, healthcare workers (including non-patient-facing staff  
154 working in healthcare institutions), adults living in Indigenous communities, and adults aged  $\geq 80$   
155 years.[7] Ontario had initially followed the manufacturers' recommended dosing schedules (i.e.,  
156 a 21-day interval for BNT162b2 and a 28-day interval for mRNA-1273), but due to disruptions  
157 in vaccine supply in late January 2021, extended the interval to 35-42 days for everyone except  
158 older adults living in congregate settings and Indigenous individuals. In early March, Ontario  
159 adopted NACI's recommendation to delay administration of the second dose by up to 16 weeks  
160 for most individuals.[8,9] Eligibility expanded over time, taking into account both age (i.e.,  
161 graduated expansion by decreasing age) and other high-risk populations, such as individuals with  
162 certain health conditions and their caregivers, certain essential frontline workers, and those aged  
163  $\geq 18$  years living or working in high-COVID-19-incidence communities (i.e., those  
164 disproportionately affected by COVID-19 and where transmission was still high). Adherence to  
165 these eligibility criteria varied across regions. As of 19 April 2021, 28% of Ontario adults had  
166 received at least one dose of a COVID-19 vaccine.[10] Comprehensive documentation of all  
167 COVID-19 vaccination events in Ontario, including product, date of administration, and dose  
168 number, is recorded in real-time into COVaxON, a centralized COVID-19 vaccine information  
169 system. We used the COVaxON file containing events up to 25 April 2021 for these analyses,  
170 which likely had records of all vaccinations delivered by 19 April 2021.

171

172 *Covariates*

**CONFIDENTIAL – NOT FOR DISTRIBUTION**  
**24 JUL 2021**

173 We obtained age, sex, and postal code of residence as of 14 December 2020 from RPDB. We  
174 obtained the number of RT-PCR tests for each subject during the 3 months prior to 14 December  
175 2020 from OLIS to use as a proxy for highly tested individuals at increased risk of exposure to  
176 SARS-CoV-2 infection (e.g., healthcare workers and caregivers of long-term care residents, who  
177 must also undergo serial SARS-CoV-2 testing). We grouped testing dates into 2-week periods to  
178 capture temporal changes in viral activity and regional vaccine roll-out. We determined the  
179 presence of comorbidities that increase the risk of severe COVID-19,[11] identified from various  
180 databases using validated algorithms and commonly accepted diagnostic codes, which have been  
181 described elsewhere.[12] We ascertained receipt of influenza vaccination during the 2019/2020  
182 and/or 2020/2021 influenza season (a proxy for health behaviours) using physician and  
183 pharmacist billing claims in the Ontario Health Insurance Plan and Ontario Drug Benefit  
184 databases, respectively. We determined the public health unit of residence using the postal code  
185 and Statistics Canada Postal Code Conversion File Plus (version 7B) and grouped them into  
186 larger regions. We obtained information at the ecologic level of dissemination area (DA) on four  
187 important social determinants of health (median household income, proportion of the working  
188 population employed as non-health essential workers [i.e., those unable to work from home],  
189 average number of persons per dwelling, and proportion of the population who self-identify as a  
190 visible minority) from 2016 Census data.[13]<sup>13</sup> DAs generally contain 400-700 individuals.  
191 Details related to these covariates are available in **eTable 1**.

192

193 **Statistical analysis**

**CONFIDENTIAL – NOT FOR DISTRIBUTION**  
**24 JUL 2021**

194 We conducted descriptive analyses and calculated standardized differences to compare  
195 characteristics between test-positive cases and test-negative controls, and between vaccinated  
196 and unvaccinated individuals.

197  
198 We used multivariable logistic regression models to estimate the odds ratio (OR) comparing the  
199 odds of vaccination between test-positive cases and test-negative controls (where unvaccinated  
200 individuals served as the reference group). We estimated unadjusted and adjusted odds ratios  
201 accounting for all covariates listed above. These covariates were selected *a priori* based on their  
202 known associations with SARS-CoV-2 infection or severity and COVID-19 vaccine  
203 receipt,[2,11,14] and were assessed as potential confounders (**eTable 2**).[15] VE was calculated  
204 using the following formula:  $VE = (1-OR) \times 100\%$ . Individuals without information on  
205 exposures, outcomes, or covariates in ICES' data holdings were assumed not to have the  
206 exposure, outcome, or covariate, and were categorized as such within the analyses.

207  
208 For the primary analysis, we estimated overall VE (for both mRNA vaccines combined) for  
209 those who received only 1 dose by their index date and those who received 2 doses by their index  
210 date. We considered index dates within varying intervals after vaccination.

211  
212 We also estimated  $VE \geq 14$  days after the first dose (among those who only received 1 dose) and  
213  $\geq 7$  days after the second dose,[16] stratified by vaccine product (BNT162b2 or mRNA-1273),  
214 age group (16–39, 40–69, and  $\geq 70$  years), sex, presence of any comorbidity, epidemic wave  
215 (index dates 14 December 2020–7 February 2021, representing wave 2 in Ontario; 8 February  
216 2021–21 March 2021, representing the period between wave 2 and wave 3; and 22 March 2021–

**CONFIDENTIAL – NOT FOR DISTRIBUTION**  
**24 JUL 2021**

217 19 April 2021, representing wave 3), and variant (earlier variant vs. Alpha vs. Beta or Gamma).

218 We also estimated VE by varying intervals after vaccination stratified by age group.

219

220 We repeated these analyses for severe outcomes, with adjustments to the intervals after

221 vaccination due to reduced sample sizes. For example, we evaluated VE for the entire period

222 (i.e.,  $\geq 0$  days) after receipt of the second dose.

223

224 Finally, as a sensitivity analysis, we determined VE against symptomatic infection and severe

225 outcomes by varying intervals among only individuals who were vaccinated (treating individuals

226 vaccinated 0-13 days before testing as the reference group) to assess whether systematic

227 differences between vaccinated and unvaccinated individuals in the main analyses were

228 adequately controlled for.[17]

229

230 All analyses were conducted using SAS Version 9.4 (SAS Institute Inc., Cary, NC). All tests

231 were two-sided and used  $p < 0.05$  as the level of statistical significance.

232

233 **RESULTS**

234 From 14 December 2020 – 19 April 2021, 2,171,449 unique individuals were tested for SARS-

235 CoV-2. After excluding individuals who had SARS-CoV-2 infection prior to the study period

236 and individuals who had received ChAdOx1 vaccine, 60.5% of those remaining did not have

237 symptoms consistent with COVID-19 or had no symptom information recorded in OLIS, 24.4%

238 were recorded as asymptomatic, and 15.1% had symptoms consistent with COVID-19 recorded

239 at the time of testing (**Figure 1**). Grouped together, individuals with COVID-19-like symptoms

**CONFIDENTIAL – NOT FOR DISTRIBUTION**  
**24 JUL 2021**

240 and those deemed asymptomatic had similar characteristics as the remaining individuals, except  
241 for COVID-19 vaccine uptake, public health unit region, and number of previous SARS-CoV-2  
242 tests (**eTable 3**).

243  
244 Of the 324,033 symptomatic tested individuals, 53,270 (16.4%) tested positive for SARS-CoV-2,  
245 42,567 (79.9%) had variant testing information available, 21,272 (6.6%) had received  $\geq 1$  dose of  
246 mRNA vaccine, and 4,894 (1.5%) had received 2 doses (**Table 1**). Among test-positive cases,  
247 2,479 (4.7%) had a severe outcome, of which 2,035 were hospitalized and 444 had died. Most  
248 hospitalized cases tested positive prior to or on admission date (1,728 [84.9%]) and nearly all  
249 tested positive before death. Test-positive cases were more likely to be male; more likely to  
250 reside in Peel Region or Toronto; more likely to have had zero SARS-CoV-2 tests during the 3  
251 months prior to the vaccination program; less likely to have received an influenza vaccine; and  
252 more likely to reside in neighbourhoods with lower income, more persons per dwelling, and  
253 greater proportions of essential workers and visible minorities (**Table 1**). Vaccinated individuals  
254 were older; less likely to be male; more likely to have had multiple SARS-CoV-2 tests during the  
255 3 months prior to the vaccination program; more likely to have a comorbidity; and more likely to  
256 have received an influenza vaccine. Compared to recipients of mRNA-1273 vaccine, recipients  
257 of BNT162b2 vaccine were younger, more likely to be female, and less likely to have a  
258 comorbidity (**eTable 4**). The distribution of these vaccine products also differed by Public Health  
259 Unit regions. Most individuals (77% for BNT162b2, 76% for mRNA-1273) had received only 1  
260 dose by the index date. Distribution of vaccine product over the study period is presented in  
261 **eFigure 1**.

262

**CONFIDENTIAL – NOT FOR DISTRIBUTION**  
**24 JUL 2021**

263 Against symptomatic infection, adjusted VE  $\geq 14$  days after receiving only 1 dose was 60%  
264 (95%CI, 57–64%). This increased from 48% (95%CI, 41–54%) at 14–20 days to a plateau of  
265 71% (95%CI, 63–78%) at 35–41 days (**Figure 2, eTable 5**). We observed a 16% increase in risk  
266 of symptomatic infection 7–13 days after a first dose (VE -16%; 95%CI, -26% to -6%), but no  
267 increase 0–6 days after a first dose. VE  $\geq 7$  days after receiving 2 doses was 91% (95%CI, 89–  
268 93%). Against severe outcomes of hospitalization or death, VE  $\geq 14$  days after receiving 1 dose  
269 was 70% (95%CI, 60–77%), increasing from 62% (95%CI, 44–75%) at 14–20 days to 91%  
270 (95%CI, 73–97%) at  $\geq 35$  days, whereas VE  $\geq 7$  days after receiving 2 doses was 98% (95%CI,  
271 88–100%) (**Figure 3, eTable 5**).

272  
273 In subgroup analyses of VE against symptomatic infection, we observed higher VE  $\geq 14$  days  
274 after receiving only 1 dose with mRNA-1273 than BNT162b2 (which was consistent across all  
275 age groups), for younger adults than adults aged  $\geq 70$  years, for individuals with no comorbidities  
276 than for those with comorbidities, and against the earlier variant and Alpha than Beta or Gamma  
277 (though 95% confidence intervals for VE for variants overlapped) (**Figure 4a, eTable 6**).

278 However, VE estimates  $\geq 7$  days after receiving 2 doses were high (all  $\geq 88\%$ ) and comparable  
279 across all subgroups, including against E484K-positive variants. Against severe outcomes, we  
280 observed higher VE  $\geq 14$  days after receiving 1 dose for younger adults aged 16–39 years, but VE  
281 estimates after receiving 2 doses were mostly similar across subgroups (**Figure 4b, eTable 7**).

282  
283 Among adults  $\geq 70$  years, VE against symptomatic infection after 1 dose was 64% (95%CI 46–  
284 76%) at 28–34 days and 85% (95%CI 38–97%) at 42–48 days, whereas comparable VE  
285 estimates were achieved sooner after 1 dose for younger adults (**Figure 5, eTable 8**).

**CONFIDENTIAL – NOT FOR DISTRIBUTION**  
**24 JUL 2021**

286 Furthermore, VE against severe outcomes was similar at  $\geq 35$  days after 1 dose (93%; 95% CI,  
287 71–98%) as after receiving 2 doses (97%; 95% CI, 86–99%).

288  
289 Lastly, in the sensitivity analysis that restricted the analysis to vaccinated individuals and treated  
290 those vaccinated 0-13 days prior to the index date as the reference group, VE estimates against  
291 symptomatic infection were similar to the main analyses (**eTable 5**). However, for severe  
292 outcomes, the estimates differed for earlier vaccination intervals.

293

294 **DISCUSSION**

295 Using the test-negative design, which mitigates selection bias due to differences in health-  
296 seeking behaviour between vaccinated and unvaccinated individuals, we estimated very high  
297 ( $>90\%$ ) vaccine effectiveness of mRNA vaccines BNT162b2 and mRNA-1273 against  
298 symptomatic SARS-CoV-2 infection with full vaccination (i.e.,  $\geq 7$  days after receipt of a second  
299 dose), and moderate ( $\sim 50\text{-}70\%$ ) VE with partial vaccination (i.e.,  $\geq 14$  days after receipt of only a  
300 first dose). Estimates for both full and partial vaccination were approximately 10 percentage  
301 points higher against hospitalization or death than symptomatic infection. VE generally increased  
302 over time after a first dose, however we also noted a slightly increased risk of symptomatic  
303 infection on days 7-13 after a first dose, compared to no vaccination. In subgroup analyses, we  
304 observed lower VE against symptomatic infection in adults aged  $\geq 70$  years and individuals with  
305 comorbidities, but a higher VE after the first dose for mRNA-1273 recipients than BNT162b2  
306 recipients. However, VE was consistently high across subgroups for fully vaccinated individuals,  
307 and also for older adults after longer intervals following receipt of a first dose.

308



**CONFIDENTIAL – NOT FOR DISTRIBUTION**  
**24 JUL 2021**

309 Our findings for fully vaccinated individuals are comparable with clinical trial efficacy estimates  
310 and other real-world effectiveness estimates reported in a range of settings.[16,18–31] Existing  
311 evidence estimating one-dose effectiveness of mRNA vaccines from observational studies is  
312 heterogeneous,[16,27,30–32] with estimates for symptomatic infection ranging from 57%  
313 (95%CI, 50–63%)[16] to 72% (95%CI, 58–86%)[31] and post-hoc calculations from efficacy  
314 trials approximately 90%.[33,34] There is similar heterogeneity among one-dose effectiveness  
315 estimates in older adults,[25,32,35] with estimates generally lower for older adults after the first  
316 dose,[16,32] and increasing with time. Our analysis identified an effectiveness against  
317 symptomatic infection of 63% (95%CI, 40–72%)  $\geq$ 49 days after only the first dose, in keeping  
318 with several other studies reporting one-dose effectiveness.[16,30] In addition, we found that one  
319 dose of the mRNA-1273 vaccine had a significantly higher VE against symptomatic infection  
320 than BNT162b2. Differences in characteristics between BNT162b2 and mRNA-1273 recipients  
321 might explain this finding, but similar results were also found in another Canadian province.[36]  
322 However findings were inconsistent in other studies that compared the effectiveness between  
323 products after one dose; some found a trend towards higher VE against infection in mRNA-1273  
324 recipients,[37,38] whereas others found no difference.[39,40] However for each, their study  
325 populations were more homogeneous than ours (e.g., adults aged  $\leq$ 40 years, healthcare workers,  
326 veterans). Our analysis also reflects extant evidence that effectiveness increases to very high  
327 levels after the second dose, even in older adults against symptomatic infection[16] and COVID-  
328 19-associated hospitalizations.[19,23] Lastly, our finding that receipt of 2 doses of mRNA  
329 vaccines was not associated with appreciable vaccine escape by lineage Alpha or E484K-positive  
330 variants (i.e., Beta and Gamma) is notable.

331



**CONFIDENTIAL – NOT FOR DISTRIBUTION**  
**24 JUL 2021**

332 In our study, we found an increased risk of infection 7-13 days after receiving the vaccine. An  
333 increased risk of SARS-CoV-2 infection up to 14 days after the first dose was also found in other  
334 studies.[25,31,41,42] This could be due to an increase in SARS-CoV-2 exposures after  
335 vaccination. Individuals may assume protection immediately following vaccination and engage  
336 in higher risk behaviours before a sufficient immune response has developed. Indeed,  
337 approximately 20% of the US public believe that protection is conferred either immediately or 1-  
338 2 weeks after the first dose.[43] Future studies should examine the potential role of behavioural  
339 changes post first dose of COVID-19 vaccines. This finding could also be due a higher baseline  
340 risk of infection among those who were initially prioritized to receive the vaccine, which may  
341 not have been adequately controlled for in our models. However, a VE estimate of close to 0% 0-  
342 6 days after a first dose provides a level of validation that differences between vaccinated and  
343 unvaccinated individuals were accounted for.

344  
345 Our study had some limitations. First, our study sample was limited to those with COVID-19  
346 symptoms recorded in OLIS, which decreased our potential sample size considerably, from  
347 2,171,449 individuals who were tested for SARS-CoV-2 to 324,033 individuals who had  
348 relevant COVID-19 symptoms recorded in OLIS. Not all laboratories in Ontario currently have  
349 the information technology infrastructure to submit symptom information (or documentation of  
350 asymptomatic testing) recorded on the SARS-CoV-2 laboratory requisition into OLIS. Thus, the  
351 generalizability of our findings to the broader population is uncertain and we could not evaluate  
352 VE against asymptomatic infection. However, the percent positivity of our study sample  
353 (53,270/324,033=16.4%) was not dramatically different from the percent positivity observed in  
354 Ontario during the study period (281,261/2,171,449=13.0%), and we would expect positivity to

**CONFIDENTIAL – NOT FOR DISTRIBUTION**  
**24 JUL 2021**

355 be higher for symptomatic individuals than asymptomatic individuals. We also acknowledge that  
356 those who had no symptom information recorded in OLIS may have been symptomatic at the  
357 time of testing and those recorded as asymptomatic may have subsequently become  
358 symptomatic. In addition, COVID-19 vaccination status may also be collected on the laboratory  
359 requisition. This may bias the true VE estimate, depending on whether symptoms were more  
360 likely to be documented on requisition forms for vaccinated individuals who ultimately test  
361 positive for SARS-CoV-2 (bias VE towards the null) or have symptoms less likely recorded (bias  
362 VE away from the null). Traditional test-negative design studies collect vaccination status among  
363 all individuals with symptoms consistent with the pathogen under study to minimize this  
364 selection bias. However, the congruence of our findings for fully vaccinated individuals with  
365 extant studies provides some reassurance that any under- or overestimation of VE is likely to be  
366 small. Second, because symptom onset date is largely unavailable in OLIS and CCM only has  
367 information on test-positive cases, we used specimen collection date as the index date. This may  
368 have led to classifying some vaccinated individuals into an incorrect dose-to-index date interval  
369 because their symptom onset would have been several days prior to getting tested. The impact to  
370 VE estimates for earlier intervals if using the specimen collection date depends on the test results  
371 for vaccinated individuals (e.g., VE for earlier intervals would be *overestimated* if there were  
372 more vaccinated test-positive cases and *underestimated* if there were more vaccinated test-  
373 negative controls) or whether the lag between symptom onset and specimen collection dates  
374 resulted in misclassification of vaccinated individuals (i.e., false negatives), which would  
375 *overestimate* VE for earlier intervals. Furthermore, we could not limit the study population to  
376 individuals tested within 10 days of symptom onset, a commonly used inclusion criterion for  
377 test-negative studies. Prolonging the interval between symptom onset and testing increases the

**CONFIDENTIAL – NOT FOR DISTRIBUTION**  
**24 JUL 2021**

378 likelihood of false-negative cases, which lowers VE estimates. However, 89% of cases with both  
379 symptom onset and specimen collection date documented in CCM (not the source of symptom  
380 data for this study) were tested within 10 days of symptom onset. Third, our results may have  
381 been impacted by outcome misclassification of severe outcomes due to unlinked case records  
382 and incomplete capture of severe outcomes in CCM, and delays in identifying hospitalizations in  
383 DAD (which are dependent on individuals being discharged) and deaths in RPDB. The direction  
384 of bias to VE estimates depends on whether data completeness and lags are differential between  
385 vaccinated and unvaccinated test-positive cases (e.g., if vaccination status ascertained during the  
386 case management process influenced the degree of data collection [e.g., if more complete among  
387 vaccinated cases, VE would be biased towards the null], or if unvaccinated cases have a  
388 prolonged hospitalization because of more severe course of illness, their hospitalization record  
389 would not be available for analysis and VE would be biased towards the null). Fourth, some of  
390 our covariates may be subject to measurement error. We used frequency of previous SARS-CoV-  
391 2 tests as a proxy to identify individuals at higher risk of exposure (and increased likelihood to  
392 be targeted for early vaccination). However, we did not include point-of-care tests because they  
393 are incompletely captured in OLIS. Furthermore, since access to testing is variable, we might not  
394 have adequately controlled for this concept. Finally, we may not have adequately accounted for  
395 confounding bias with the covariates that were available in the study databases, especially  
396 against severe outcomes.

397  
398 Our findings suggest that older individuals and those with comorbidities may benefit from risk-  
399 based recommendations to minimize second-dose delays. However, rising protection against  
400 severe outcomes – arguably the more important outcome – with increasing time after a first dose

**CONFIDENTIAL – NOT FOR DISTRIBUTION**  
**24 JUL 2021**

401 provides support for delaying the second dose in settings that face vaccine supply constraints.  
402 Mathematical modelling could be conducted to demonstrate how, particularly for jurisdictions  
403 with limited vaccine supply, vaccines should be distributed to maximize population protection  
404 (e.g., the relative benefits of providing second doses earlier to older populations versus providing  
405 more first doses to younger populations who respond better to a single dose and leading to more  
406 rapid achievement of herd immunity by maximizing coverage with 1 dose). Since VE against  
407 symptomatic infection after 1 dose is only moderate, and among older adults appears to be  
408 modest even at 14–20 days, individuals need to be informed that besides the absence of benefit  
409 during the first 2 weeks (and likely longer for older adults) after a first dose, they should  
410 continue to adhere to recommended public health measures, such as mask-wearing, physical  
411 distancing, and avoidance of social gatherings.

**CONFIDENTIAL – NOT FOR DISTRIBUTION**  
**24 JUL 2021**

412 Conflicts of interest

413 KW is CEO of CANImmunize and serves on the data safety board for the Medicago COVID-19  
414 vaccine trial. SMM has received unrestricted research grants from Merck, GlaxoSmithKline,  
415 Sanofi Pasteur, Pfizer, and Roche-Assurex for unrelated studies. SMM has received fees as an  
416 advisory board member for GlaxoSmithKline, Merck, Pfizer, Sanofi Pasteur, and Seqirus. CHR  
417 has received an unrestricted research grant from Pfizer for an unrelated study. The other authors  
418 declare no conflicts of interest.

419

420 Contributors

421 HC and JCK designed and oversaw the study. SH and HC obtained the data and conducted all  
422 analyses (data set and variable creation and statistical modelling). BC contributed to data  
423 analyses and data preparation for the symptomatic data set. SN, MES, HC, and JCK drafted the  
424 manuscript. All authors contributed to the analysis plan, interpreted the results, critically  
425 reviewed and edited the manuscript, approved the final version, and agreed to be accountable for  
426 all aspects of the work.

427

428 Ethics approval

429 ICES is a prescribed entity under Ontario's Personal Health Information Protection Act  
430 (PHIPA). Section 45 of PHIPA authorizes ICES to collect personal health information, without  
431 consent, for the purpose of analysis or compiling statistical information with respect to the  
432 management of, evaluation or monitoring of, the allocation of resources to or planning for all or  
433 part of the health system. Projects that use data collected by ICES under section 45 of PHIPA,

**CONFIDENTIAL – NOT FOR DISTRIBUTION**  
**24 JUL 2021**

434 and use no other data, are exempt from REB review. The use of the data in this project is  
435 authorized under section 45 and approved by ICES' Privacy and Legal Office.

436

437 Funding

438 This work was supported by the Canadian Immunization Research Network (CIRN) through a  
439 grant from the Public Health Agency of Canada and the Canadian Institutes of Health Research  
440 (CNF 151944). This project was also supported by funding from the Public Health Agency of  
441 Canada, through the Vaccine Surveillance Reference group and the COVID-19 Immunity Task  
442 Force. This study was also supported by ICES, which is funded by an annual grant from the  
443 Ontario Ministry of Health (MOH). JCK is supported by Clinician-Scientist Award from the  
444 University of Toronto Department of Family and Community Medicine. PCA is supported by a  
445 Mid-Career Investigator Award from the Heart and Stroke Foundation. Study sponsors had no  
446 role in study design, interpretation of the findings, manuscript preparation, or the decision to  
447 publish.

448

449 Data availability statement

450 The dataset from this study is held securely in coded form at ICES. While legal data sharing  
451 agreements between ICES and data providers (e.g., healthcare organizations and government)  
452 prohibit ICES from making the dataset publicly available, access may be granted to those who  
453 meet pre-specified criteria for confidential access, available at [www.ices.on.ca/DAS](http://www.ices.on.ca/DAS) (email:  
454 [das@ices.on.ca](mailto:das@ices.on.ca)). The full dataset creation plan and underlying analytic code are available from  
455 the authors upon request, understanding that the computer programs may rely upon coding

**CONFIDENTIAL – NOT FOR DISTRIBUTION**  
**24 JUL 2021**

456 templates or macros that are unique to ICES and are therefore either inaccessible or may require  
457 modification.

458

459 Dissemination statement

460 As this research involves information drawn from the entire population of Ontario, it is not  
461 feasible to report these results to each individual Ontarian. However, the results from this  
462 manuscript will be made publicly available through a pre-print server and through dissemination  
463 by ICES, news media, and other means.

464

465 Transparency declaration

466 JCK affirms that the manuscript is an honest, accurate, and transparent account of the study  
467 being reported; that no important aspects of the study have been omitted; and that any  
468 discrepancies from the study as planned have been explained.

469

470 Acknowledgments

471 We would like to acknowledge Public Health Ontario for access to case-level data from CCM  
472 and COVID-19 laboratory data, as well as assistance with data interpretation. We also thank the  
473 staff of Ontario's public health units who are responsible for COVID-19 case and contact  
474 management and data collection within CCM. We thank IQVIA Solutions Canada Inc. for use of  
475 their Drug Information Database. The authors are grateful to the Ontario residents without whom  
476 this research would be impossible.

477

478 Disclaimers

**CONFIDENTIAL – NOT FOR DISTRIBUTION**  
**24 JUL 2021**

479 This study was supported by ICES, which is funded by an annual grant from the Ontario  
480 Ministry of Health (MOH) and the Ministry of Long-Term Care (MLTC). This study was  
481 supported by the Ontario Health Data Platform (OHDP), a Province of Ontario initiative to  
482 support Ontario’s ongoing response to COVID-19 and its related impacts. The study sponsors  
483 did not participate in the design and conduct of the study; collection, management, analysis and  
484 interpretation of the data; preparation, review or approval of the manuscript; or the decision to  
485 submit the manuscript for publication. Parts of this material are based on data and/or information  
486 compiled and provided by the Canadian Institute for Health Information (CIHI) and by Cancer  
487 Care Ontario (CCO). However, the analyses, conclusions, opinions and statement expressed  
488 herein are solely those of the authors, and do not reflect those of the funding or data sources; no  
489 endorsement by ICES, MOH, MLTC, OHDP, its partners, the Province of Ontario, CIHI or CCO  
490 is intended or should be inferred.

491  
492 Licence for Publication

493 The Corresponding Author has the right to grant on behalf of all authors and does grant on behalf  
494 of all authors, an exclusive licence (or non exclusive for government employees) on a worldwide  
495 basis to the BMJ Publishing Group Ltd to permit this article (if accepted) to be published  
496 in BMJ and any other BMJ PGL products and sublicences such use and exploit all subsidiary  
497 rights, as set out in our licence ([http://group.bmj.com/products/journals/instructions-for-](http://group.bmj.com/products/journals/instructions-for-authors/licence-forms)  
498 [authors/licence-forms](http://group.bmj.com/products/journals/instructions-for-authors/licence-forms)).

499



**CONFIDENTIAL – NOT FOR DISTRIBUTION**  
**24 JUL 2021**

500 **References**

- 501 1 Patel M, Jackson M, Ferdinands J. Postlicensure Evaluation of COVID-19 Vaccines.  
502 *JAMA* 2020;**324**:1939–40. doi:10.1001/JAMA.2020.19328
- 503 2 National Advisory Committee on Immunization. COVID-19 vaccine: Guidance on the  
504 prioritization of initial doses - Canada.ca. 2021.[https://www.canada.ca/en/public-](https://www.canada.ca/en/public-health/services/immunization/national-advisory-committee-on-immunization-naci/guidance-prioritization-initial-doses-covid-19-vaccines.html)  
505 [health/services/immunization/national-advisory-committee-on-immunization-](https://www.canada.ca/en/public-health/services/immunization/national-advisory-committee-on-immunization-naci/guidance-prioritization-initial-doses-covid-19-vaccines.html)  
506 [naci/guidance-prioritization-initial-doses-covid-19-vaccines.html](https://www.canada.ca/en/public-health/services/immunization/national-advisory-committee-on-immunization-naci/guidance-prioritization-initial-doses-covid-19-vaccines.html) (accessed 2 May 2021).
- 507 3 Jackson M, Nelson J. The test-negative design for estimating influenza vaccine  
508 effectiveness. *Vaccine* 2013;**31**:2165–8. doi:10.1016/J.VACCINE.2013.02.053
- 509 4 Sullivan S, Tchetgen Tchetgen E, Cowling B. Theoretical Basis of the Test-Negative  
510 Study Design for Assessment of Influenza Vaccine Effectiveness. *Am J Epidemiol*  
511 2016;**184**:345–53. doi:10.1093/AJE/KWW064
- 512 5 Watson J, Whiting P, Brush J. Interpreting a covid-19 test result. *BMJ* 2020;**369**.  
513 doi:10.1136/BMJ.M1808
- 514 6 Updates to PHO’s Variants of Concern Laboratory Testing | Public Health Ontario.  
515 2021.<https://www.publichealthontario.ca/en/about/blog/2021/lab-voc-testing-updates>  
516 (accessed 3 May 2021).
- 517 7 Ontario’s COVID-19 vaccination plan | COVID-19 (coronavirus) in Ontario.  
518 2021.[https://covid-19.ontario.ca/ontarios-covid-19-vaccination-plan#our-three-phased-](https://covid-19.ontario.ca/ontarios-covid-19-vaccination-plan#our-three-phased-vaccination-plan)  
519 [vaccination-plan](https://covid-19.ontario.ca/ontarios-covid-19-vaccination-plan#our-three-phased-vaccination-plan) (accessed 3 May 2021).
- 520 8 *Vaccine Clinical Advisory Group (VCAG) Recommendations on Exceptions to Extended*  
521 *Dose Intervals for COVID-19 vaccines*. Ontario Ministry of Health 2021.  
522 [https://www.health.gov.on.ca/en/pro/programs/publichealth/coronavirus/docs/vaccine/CO](https://www.health.gov.on.ca/en/pro/programs/publichealth/coronavirus/docs/vaccine/COVID_19_medical_exceptions_vaccine_dose_intervals.pdf)  
523 [VID\\_19\\_medical\\_exceptions\\_vaccine\\_dose\\_intervals.pdf](https://www.health.gov.on.ca/en/pro/programs/publichealth/coronavirus/docs/vaccine/COVID_19_medical_exceptions_vaccine_dose_intervals.pdf) (accessed 3 May 2021).
- 524 9 *Extension of the Second Dose*. Ontario Ministry of Health 2021.  
525 [https://www.health.gov.on.ca/en/pro/programs/publichealth/coronavirus/docs/vaccine/CO](https://www.health.gov.on.ca/en/pro/programs/publichealth/coronavirus/docs/vaccine/COVID_19_vaccine_dose_intervals.pdf)  
526 [VID\\_19\\_vaccine\\_dose\\_intervals.pdf](https://www.health.gov.on.ca/en/pro/programs/publichealth/coronavirus/docs/vaccine/COVID_19_vaccine_dose_intervals.pdf) (accessed 3 May 2021).
- 527 10 ICES COVID-19 Dashboard. 2021.[https://www.ices.on.ca/DAS/AHRQ/COVID-19-](https://www.ices.on.ca/DAS/AHRQ/COVID-19-Dashboard)  
528 [Dashboard](https://www.ices.on.ca/DAS/AHRQ/COVID-19-Dashboard) (accessed 3 May 2021).
- 529 11 Underlying medical conditions associated with high risk for severe COVID-19:  
530 Information for healthcare providers. 2021.[https://www.cdc.gov/coronavirus/2019-](https://www.cdc.gov/coronavirus/2019-ncov/hcp/clinical-care/underlyingconditions.html)  
531 [ncov/hcp/clinical-care/underlyingconditions.html](https://www.cdc.gov/coronavirus/2019-ncov/hcp/clinical-care/underlyingconditions.html) (accessed 3 May 2021).
- 532 12 Kwong JC, Buchan SA, Chung H, *et al*. Can routinely collected laboratory and health  
533 administrative data be used to assess influenza vaccine effectiveness? Assessing the  
534 validity of the Flu and Other Respiratory Viruses Research (FOREVER) Cohort. *Vaccine*  
535 2019;**37**:4392–400.
- 536 13 *Dictionary, Census of Population, 2016 - Dissemination area (DA)*. Statistics  
537 Canada/Statistique Canada 2016. [https://www12.statcan.gc.ca/census-](https://www12.statcan.gc.ca/census-recensement/2016/ref/dict/geo021-eng.cfm)  
538 [recensement/2016/ref/dict/geo021-eng.cfm](https://www12.statcan.gc.ca/census-recensement/2016/ref/dict/geo021-eng.cfm) (accessed 24 Jul 2021).
- 539 14 Sundaram M, Calzavara A, Mishra S, *et al*. Individual and social determinants of SARS-  
540 CoV-2 testing and positivity in Ontario, Canada: a population-wide study. *CMAJ*  
541 2021;**193**:E723–34. doi:10.1503/CMAJ.202608
- 542 15 Evaluation of COVID-19 vaccine effectiveness. 2021.  
543 [https://www.who.int/publications/i/item/WHO-2019-nCoV-vaccine\\_effectiveness-](https://www.who.int/publications/i/item/WHO-2019-nCoV-vaccine_effectiveness-measurement-2021.1)  
544 [measurement-2021.1](https://www.who.int/publications/i/item/WHO-2019-nCoV-vaccine_effectiveness-measurement-2021.1) (accessed 24 Jul 2021).

**CONFIDENTIAL – NOT FOR DISTRIBUTION**  
**24 JUL 2021**

- 545 16 Dagan N, Barda N, Kepten E, *et al.* BNT162b2 mRNA Covid-19 Vaccine in a Nationwide  
546 Mass Vaccination Setting. *N Engl J Med* 2021;**384**:1412–23.  
547 doi:10.1056/NEJMOA2101765
- 548 17 Hitchings MDT, Lewnard JA, Dean NE, *et al.* Use of recently vaccinated individuals to  
549 detect bias in test-negative case-control studies of COVID-19 vaccine effectiveness.  
550 *medRxiv* 2021.
- 551 18 Mason T, Whitston M, Hodgson J, *et al.* Effects of BNT162b2 mRNA vaccine on Covid-  
552 19 infection and hospitalisation among older people: matched case control study for  
553 England. *medRxiv* 2021.
- 554 19 Haas E, Angulo F, McLaughlin J, *et al.* Impact and effectiveness of mRNA BNT162b2  
555 vaccine against SARS-CoV-2 infections and COVID-19 cases, hospitalisations, and  
556 deaths following a nationwide vaccination campaign in Israel: an observational study  
557 using national surveillance data. *Lancet* 2021;**397**:1819–29. doi:10.1016/S0140-  
558 6736(21)00947-8
- 559 20 Thompson M, Burgess J, Naleway A, *et al.* Interim Estimates of Vaccine Effectiveness of  
560 BNT162b2 and mRNA-1273 COVID-19 Vaccines in Preventing SARS-CoV-2 Infection  
561 Among Health Care Personnel, First Responders, and Other Essential and Frontline  
562 Workers — Eight U.S. Locations, December 2020–March. *MMWR Morb Mortal Wkly*  
563 *Rep* 2021;**70**:495–500. doi:10.15585/MMWR.MM7013E3
- 564 21 Angel Y, Spitzer A, Henig O, *et al.* Association Between Vaccination With BNT162b2  
565 and Incidence of Symptomatic and Asymptomatic SARS-CoV-2 Infections Among Health  
566 Care Workers. *JAMA* 2021;**325**:2457–65. doi:10.1001/JAMA.2021.7152
- 567 22 Tang L, Hijano DR, Gaur AH, *et al.* Asymptomatic and Symptomatic SARS-CoV-2  
568 Infections After BNT162b2 Vaccination in a Routinely Screened Workforce. *JAMA*  
569 2021;**325**:2500–2. doi:10.1001/JAMA.2021.6564
- 570 23 Tenforde M, Olson S, Self W, *et al.* Effectiveness of Pfizer-BioNTech and Moderna  
571 Vaccines Against COVID-19 Among Hospitalized Adults Aged  $\geq 65$  Years — United  
572 States, January–March 2021. *MMWR Morb Mortal Wkly Rep* 2021;**70**:674–9.  
573 doi:10.15585/MMWR.MM7018E1
- 574 24 Björk J, Inghammar M, Moghaddassi M, *et al.* Effectiveness of the BNT162b2 vaccine in  
575 preventing COVID-19 in the working age population – first results from a cohort study in  
576 Southern Sweden. *medRxiv* 2021.
- 577 25 Lopez-Bernal J, Andrews N, Gower C, *et al.* Effectiveness of the Pfizer-BioNTech and  
578 Oxford-AstraZeneca vaccines on covid-19 related symptoms, hospital admissions, and  
579 mortality in older adults in England: test negative case-control study. *BMJ* 2021;**373**.  
580 doi:10.1136/BMJ.N1088
- 581 26 Pawlowski C, Lenahan P, Puranik A, *et al.* FDA-authorized mRNA COVID-19 vaccines  
582 are effective per real-world evidence synthesized across a multi-state health system. *Med*  
583 *(New York, NY)* Published Online First: 2021. doi:10.1016/J.MEDJ.2021.06.007
- 584 27 Aran D. Estimating real-world COVID-19 vaccine effectiveness in Israel using aggregated  
585 counts. *medRxiv* 2021.
- 586 28 Yelin I, Katz R, Herzel E, *et al.* Associations of the BNT162b2 COVID-19 vaccine  
587 effectiveness with patient age and comorbidities. *medRxiv* 2021.
- 588 29 Vasileiou E, Simpson C, Shi T, *et al.* Interim findings from first-dose mass COVID-19  
589 vaccination roll-out and COVID-19 hospital admissions in Scotland: a national  
590 prospective cohort study. *Lancet* 2021;**397**:1646–57. doi:10.1016/S0140-6736(21)00677-2

**CONFIDENTIAL – NOT FOR DISTRIBUTION**  
**24 JUL 2021**

- 591 30 Andrejko KL, Pry J, Myers JF, *et al.* Prevention of COVID-19 by mRNA-based vaccines  
592 within the general population of California. *medRxiv* 2021.
- 593 31 Hall V, Foulkes S, Saei A, *et al.* COVID-19 vaccine coverage in health-care workers in  
594 England and effectiveness of BNT162b2 mRNA vaccine against infection (SIREN): a  
595 prospective, multicentre, cohort study. *Lancet* 2021;**397**:1725–35. doi:10.1016/S0140-  
596 6736(21)00790-X
- 597 32 Chodick G, Tene L, Patalon T, *et al.* The effectiveness of the first dose of BNT162b2  
598 vaccine in reducing SARS-CoV-2 infection 13–24 days after immunization: real-world  
599 evidence. *medRxiv* 2021;:2021.01.27.21250612. doi:10.1101/2021.01.27.21250612
- 600 33 Skowronski D, De Serres G. Safety and Efficacy of the BNT162b2 mRNA Covid-19  
601 Vaccine: Letter to the Editor. *N Engl J Med* 2021;**384**:1576–8.  
602 doi:10.1056/NEJMC2036242
- 603 34 *Annex A: Report to JCVI on estimated efficacy of a single dose of Pfizer BioNTech*  
604 *(BNT162b2 mRNA) vaccine and of a single dose of ChAdOx1 vaccine (AZD1222)*. Public  
605 Health England 2020.
- 606 35 Hyams C, Marlow R, Maseko Z, *et al.* Effectiveness of BNT162b2 and ChAdOx1 nCoV-  
607 19 COVID-19 vaccination at preventing hospitalisations in people aged at least 80 years: a  
608 test-negative, case-control study. *Lancet Infect Dis* Published Online First: 2021.  
609 doi:10.1016/S1473-3099(21)00330-3
- 610 36 COVID-19 Alberta statistics | alberta.ca. [https://www.alberta.ca/stats/covid-19-alberta-](https://www.alberta.ca/stats/covid-19-alberta-statistics.htm#vaccine-outcomes)  
611 [statistics.htm#vaccine-outcomes](https://www.alberta.ca/stats/covid-19-alberta-statistics.htm#vaccine-outcomes) (accessed 24 Jul 2021).
- 612 37 Swift M, Breeher L, Tande A, *et al.* Effectiveness of mRNA COVID-19 vaccines against  
613 SARS-CoV-2 infection in a cohort of healthcare personnel. *Clin Infect Dis* Published  
614 Online First: 26 April 2021. doi:10.1093/CID/CIAB361
- 615 38 *COVID-19 vaccine surveillance report - week 26*. Public Health England 2021.  
616 [https://assets.publishing.service.gov.uk/government/uploads/system/uploads/attachment\\_d](https://assets.publishing.service.gov.uk/government/uploads/system/uploads/attachment_data/file/998411/Vaccine_surveillance_report_-_week_26.pdf)  
617 [ata/file/998411/Vaccine\\_surveillance\\_report\\_-\\_week\\_26.pdf](https://assets.publishing.service.gov.uk/government/uploads/system/uploads/attachment_data/file/998411/Vaccine_surveillance_report_-_week_26.pdf) (accessed 24 Jul 2021).
- 618 39 Butt A, Omer S, Yan P, *et al.* SARS-CoV-2 Vaccine Effectiveness in a High-Risk  
619 National Population in a Real-World Setting. *Ann Intern Med* Published Online First:  
620 2021. doi:10.7326/M21-1577
- 621 40 Thompson MG, Burgess JL, Naleway AL, *et al.* Prevention and Attenuation of Covid-19  
622 with the BNT162b2 and mRNA-1273 Vaccines. *N Engl J Med* 2021;**385**:320–9.  
623 doi:10.1056/NEJMOA2107058
- 624 41 Chemaitelly H, Yassine H, Benslimane F, *et al.* mRNA-1273 COVID-19 vaccine  
625 effectiveness against the B.1.1.7 and B.1.351 variants and severe COVID-19 disease in  
626 Qatar. *Nat Med* Published Online First: 2021. doi:10.1038/S41591-021-01446-Y
- 627 42 Hunter PR, Brainard J. Estimating the effectiveness of the Pfizer COVID-19 BNT162b2  
628 vaccine after a single dose. A reanalysis of a study of ‘real-world’ vaccination outcomes  
629 from Israel. *medRxiv* 2021.
- 630 43 Goldfarb JL, Kreps S, Brownstein JS, *et al.* Beyond the First Dose — Covid-19 Vaccine  
631 Follow-through and Continued Protective Measures. *N Engl J Med* Published Online First:  
632 2021. doi:10.1056/NEJMP2104527  
633

**Table 1.** Characteristics of symptomatic individuals tested for SARS-CoV-2 between 14 December 2020 and 19 April 2021 in Ontario, Canada.

Characteristic	SARS-CoV-2- positive, n (%) <sup>a</sup> (N=53,270)	SARS-CoV-2- negative, n (%) <sup>a</sup> (N=270,763)	Standardized difference <sup>b</sup>	Vaccinated with ≥1 dose of mRNA COVID-19 vaccine, n (%) <sup>a</sup> (N=21,272)	Unvaccinated, n (%) <sup>a</sup> (N=302,761)	Standardized difference <sup>b</sup>
Received ≥1 dose of COVID-19 vaccine	2,050 (3.8)	19,222 (7.1)	-	-	-	-
Received 2 doses of COVID-19 vaccine	73 (0.1)	4,821 (1.8)	-	-	-	-
Tested positive for SARS-CoV-2	-	-	-	2,050 (9.6)	51,220 (16.9)	-
Earlier variant	-	-	-	579 (2.7)	27,510 (9.1)	-
Alpha (B.1.1.7)	-	-	-	807 (3.8)	12,282 (4.1)	-
Beta (B.1.351) or Gamma (P.1) (E484K+ variants)	-	-	-	98 (0.5)	1,291 (0.4)	-
Age (years), mean (standard deviation)	42.4 (17.1)	43.2 (17.8)	0.04	51.8 (20.8)	42.4 (17.3)	0.49
Age group (years)						
16–29	15,175 (28.5)	72,238 (26.7)	0.04	3,457 (16.3)	83,956 (27.7)	0.28
30–39	10,024 (18.8)	59,326 (21.9)	0.08	4,011 (18.9)	65,339 (21.6)	0.07
40–49	9,642 (18.1)	46,225 (17.1)	0.03	3,287 (15.5)	52,580 (17.4)	0.05
50–59	9,460 (17.8)	40,874 (15.1)	0.07	3,112 (14.6)	47,222 (15.6)	0.03
60–69	5,279 (9.9)	27,342 (10.1)	0.01	2,261 (10.6)	30,360 (10.0)	0.02
70–79	2,426 (4.6)	14,888 (5.5)	0.04	2,272 (10.7)	15,042 (5.0)	0.21
≥80	1,264 (2.4)	9,870 (3.6)	0.07	2,872 (13.5)	8,262 (2.7)	0.40
Male sex	25,993 (48.8)	112,501 (41.5)	0.15	6,013 (28.3)	132,481 (43.8)	0.33
Public health unit region <sup>c</sup>						
Central East	2,624 (4.9)	29,194 (10.8)	0.22	1,969 (9.3)	29,849 (9.9)	0.02
Central West	8,322 (15.6)	48,419 (17.9)	0.06	3,853 (18.1)	52,888 (17.5)	0.02
Durham	1,433 (2.7)	8,583 (3.2)	0.03	522 (2.5)	9,494 (3.1)	0.04
Eastern	689 (1.3)	15,147 (5.6)	0.24	1,087 (5.1)	14,749 (4.9)	0.01
North	1,753 (3.3)	31,321 (11.6)	0.32	2,251 (10.6)	30,823 (10.2)	0.01
Ottawa	417 (0.8)	3,144 (1.2)	0.04	446 (2.1)	3,115 (1.0)	0.09
Peel	13,515 (25.4)	32,981 (12.2)	0.34	2,395 (11.3)	44,101 (14.6)	0.10
South West	7,562 (14.2)	39,316 (14.5)	0.01	3,885 (18.3)	42,993 (14.2)	0.11
Toronto	12,458 (23.4)	45,540 (16.8)	0.16	3,462 (16.3)	54,536 (18.0)	0.05
York	4,278 (8.0)	15,995 (5.9)	0.08	1,323 (6.2)	18,950 (6.3)	0.00
Biweekly period of test						
14 Dec 2020 to 27 Dec 2020	4,139 (7.8)	27,456 (10.1)	0.08	13 (0.1)	31,582 (10.4)	0.48

Characteristic	SARS-CoV-2- positive, n (%) <sup>a</sup> (N=53,270)	SARS-CoV-2- negative, n (%) <sup>a</sup> (N=270,763)	Standardized difference <sup>b</sup>	Vaccinated with ≥1 dose of mRNA COVID-19 vaccine, n (%) <sup>a</sup> (N=21,272)	Unvaccinated, n (%) <sup>a</sup> (N=302,761)	Standardized difference <sup>b</sup>
28 Dec 2020 to 10 Jan 2021	6,870 (12.9)	26,993 (10.0)	0.09	335 (1.6)	33,528 (11.1)	0.40
11 Jan 2021 to 24 Jan 2021	4,864 (9.1)	26,747 (9.9)	0.03	1,068 (5.0)	30,543 (10.1)	0.19
25 Jan 2021 to 7 Feb 2021	3,539 (6.6)	24,276 (9.0)	0.09	1,204 (5.7)	26,611 (8.8)	0.12
8 Feb 2021 to 21 Feb 2021	3,595 (6.7)	24,800 (9.2)	0.09	1,031 (4.8)	27,364 (9.0)	0.17
22 Feb 2021 to 7 Mar 2021	3,539 (6.6)	30,760 (11.4)	0.17	1,491 (7.0)	32,808 (10.8)	0.13
8 Mar 2021 to 21 Mar 2021	5,134 (9.6)	32,776 (12.1)	0.08	2,790 (13.1)	35,120 (11.6)	0.05
22 Mar 2021 to 4 Apr 2021	8,338 (15.7)	35,910 (13.3)	0.07	4,814 (22.6)	39,434 (13.0)	0.25
5 Apr 2021 to 19 Apr 2021	13,252 (24.9)	41,045 (15.2)	0.24	8,526 (40.1)	45,771 (15.1)	0.58
Number of tests in previous 3 months						
0	43,713 (82.1)	189,786 (70.1)	0.28	11,588 (54.5)	221,911 (73.3)	0.40
1	7,151 (13.4)	54,827 (20.2)	0.18	4,338 (20.4)	57,640 (19.0)	0.03
≥2	2,406 (4.5)	26,150 (9.7)	0.20	5,346 (25.1)	23,210 (7.7)	0.49
Any comorbidity <sup>d</sup>	23,212 (43.6)	127,974 (47.3)	0.07	12,218 (57.4)	138,968 (45.9)	0.23
Receipt of 2019-2020 and/or 2020-2021 influenza vaccination	13,751 (25.8)	89,395 (33.0)	0.16	9,587 (45.1)	93,559 (30.9)	0.30
Household income quintile <sup>c, e</sup>						
1 (lowest)	11,878 (22.3)	47,944 (17.7)	0.11	3,750 (17.6)	56,072 (18.5)	0.02
2	11,154 (20.9)	51,470 (19.0)	0.05	4,146 (19.5)	58,478 (19.3)	0.00
3	11,477 (21.5)	52,628 (19.4)	0.05	4,233 (19.9)	59,872 (19.8)	0.00
4	10,146 (19.0)	56,676 (20.9)	0.05	4,513 (21.2)	62,309 (20.6)	0.02
5 (highest)	8,359 (15.7)	60,774 (22.4)	0.17	4,540 (21.3)	64,593 (21.3)	0.00
Essential workers quintile <sup>c, f</sup>						
1 (0%–32.5%)	6,440 (12.1)	50,664 (18.7)	0.18	3,917 (18.4)	53,187 (17.6)	0.02
2 (32.5%–42.3%)	11,225 (21.1)	60,040 (22.2)	0.03	4,664 (21.9)	66,601 (22.0)	0.00
3 (42.3%–49.8%)	11,106 (20.8)	56,108 (20.7)	0.00	4,468 (21.0)	62,746 (20.7)	0.01
4 (50.0%–57.5%)	11,576 (21.7)	52,849 (19.5)	0.05	4,211 (19.8)	60,214 (19.9)	0.00
5 (57.5%–100%)	12,519 (23.5)	49,067 (18.1)	0.13	3,859 (18.1)	57,727 (19.1)	0.02
Persons per dwelling quintile <sup>c, g</sup>						
1 (0–2.1)	5,781 (10.9)	51,852 (19.2)	0.23	4,277 (20.1)	53,356 (17.6)	0.06
2 (2.2–2.4)	6,641 (12.5)	52,326 (19.3)	0.19	4,219 (19.8)	54,748 (18.1)	0.04
3 (2.5–2.6)	5,633 (10.6)	37,229 (13.7)	0.10	3,020 (14.2)	39,842 (13.2)	0.03

Characteristic	SARS-CoV-2- positive, n (%) <sup>a</sup> (N=53,270)	SARS-CoV-2- negative, n (%) <sup>a</sup> (N=270,763)	Standardized difference <sup>b</sup>	Vaccinated with ≥1 dose of mRNA COVID-19 vaccine, n (%) <sup>a</sup> (N=21,272)	Unvaccinated, n (%) <sup>a</sup> (N=302,761)	Standardized difference <sup>b</sup>
4 (2.7–3.0)	12,967 (24.3)	63,774 (23.6)	0.02	4,874 (22.9)	71,867 (23.7)	0.02
5 (3.1–5.7)	21,833 (41.0)	63,459 (23.4)	0.38	4,709 (22.1)	80,583 (26.6)	0.10
Self-identified visible minority quintile <sup>c, h</sup>						
1 (0.0%–2.2%)	4,437 (8.3)	51,919 (19.2)	0.32	4,133 (19.4)	52,223 (17.2)	0.06
2 (2.2%–7.5%)	5,752 (10.8)	55,124 (20.4)	0.27	4,592 (21.6)	56,284 (18.6)	0.07
3 (7.5%–18.7%)	7,223 (13.6)	51,122 (18.9)	0.14	3,982 (18.7)	54,363 (18.0)	0.02
4 (18.7%–43.5%)	10,718 (20.1)	53,691 (19.8)	0.01	3,974 (18.7)	60,435 (20.0)	0.03
5 (43.5%–100%)	24,736 (46.4)	56,876 (21.0)	0.56	4,438 (20.9)	77,174 (25.5)	0.11

<sup>a</sup>Proportion reported, unless stated otherwise.

<sup>b</sup>Standardized differences of >0.10 are considered clinically relevant.

<sup>c</sup>The sum of counts does not equal the column total because of individuals with missing information (<1.0%) for this characteristic.

<sup>d</sup>Comorbidities include chronic respiratory diseases, chronic heart diseases, hypertension, diabetes, immunocompromising conditions due to underlying diseases or therapy, autoimmune diseases, chronic kidney disease, advanced liver disease, dementia/frailty and history of stroke or transient ischemic attack.

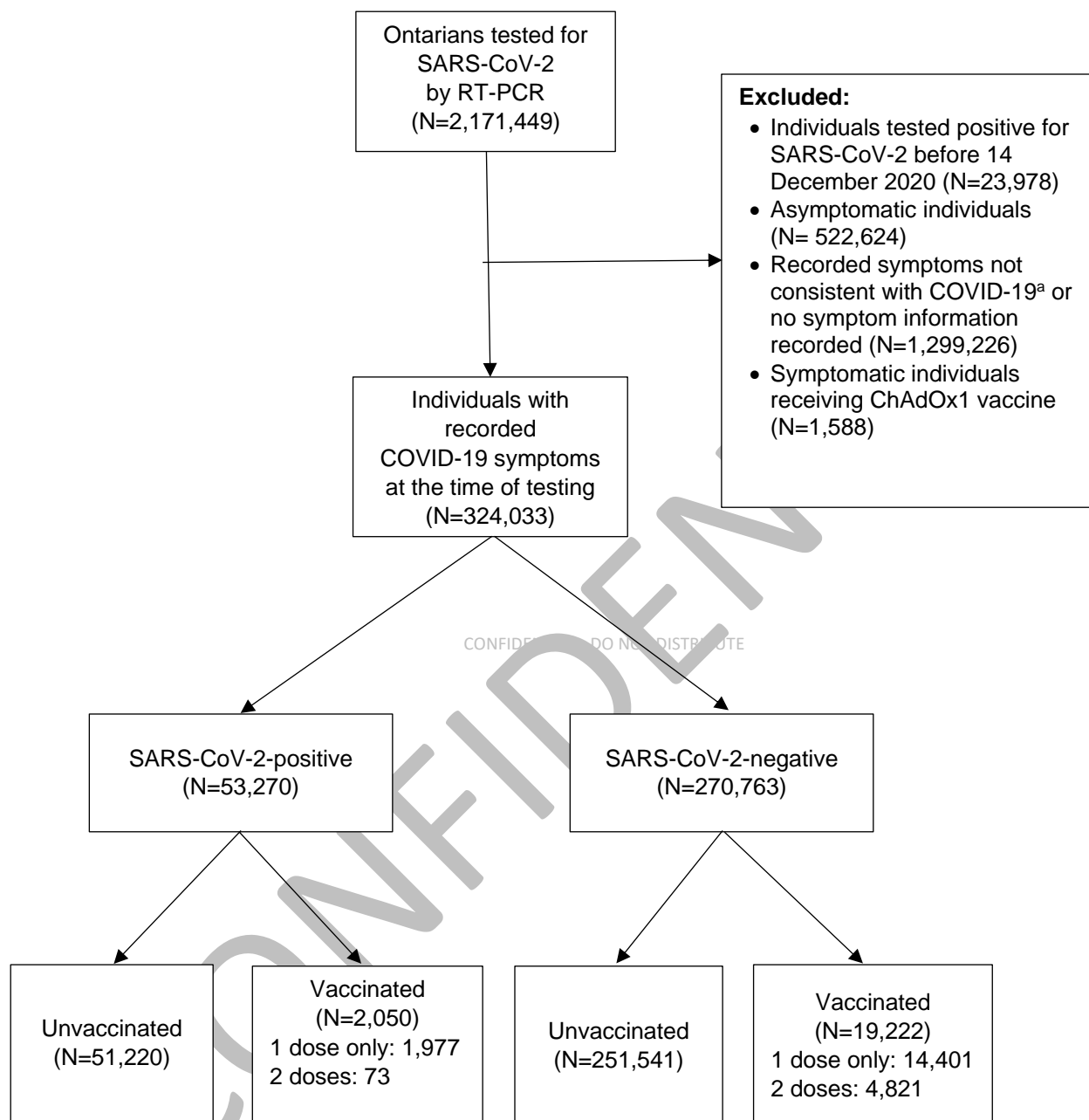
<sup>e</sup>Household income quintile has variable cut-off values in each city/Census area to account for cost of living. A dissemination area (DA) being in quintile 1 means it is among the lowest 20% of DAs in its city by income.

<sup>f</sup>Percentage of people in the area working in the following occupations: sales and service occupations; trades, transport and equipment operators and related occupations; natural resources, agriculture, and related production occupations; and occupations in manufacturing and utilities. Census counts for people are randomly rounded up or down to the nearest number divisible by 5, which causes some minor imprecision.

<sup>g</sup>Range of persons per dwelling.

<sup>h</sup>Percentage of people in the area who self-identified as a visible minority. Census counts for people are randomly rounded up or down to the nearest number divisible by 5, which causes some minor imprecision.

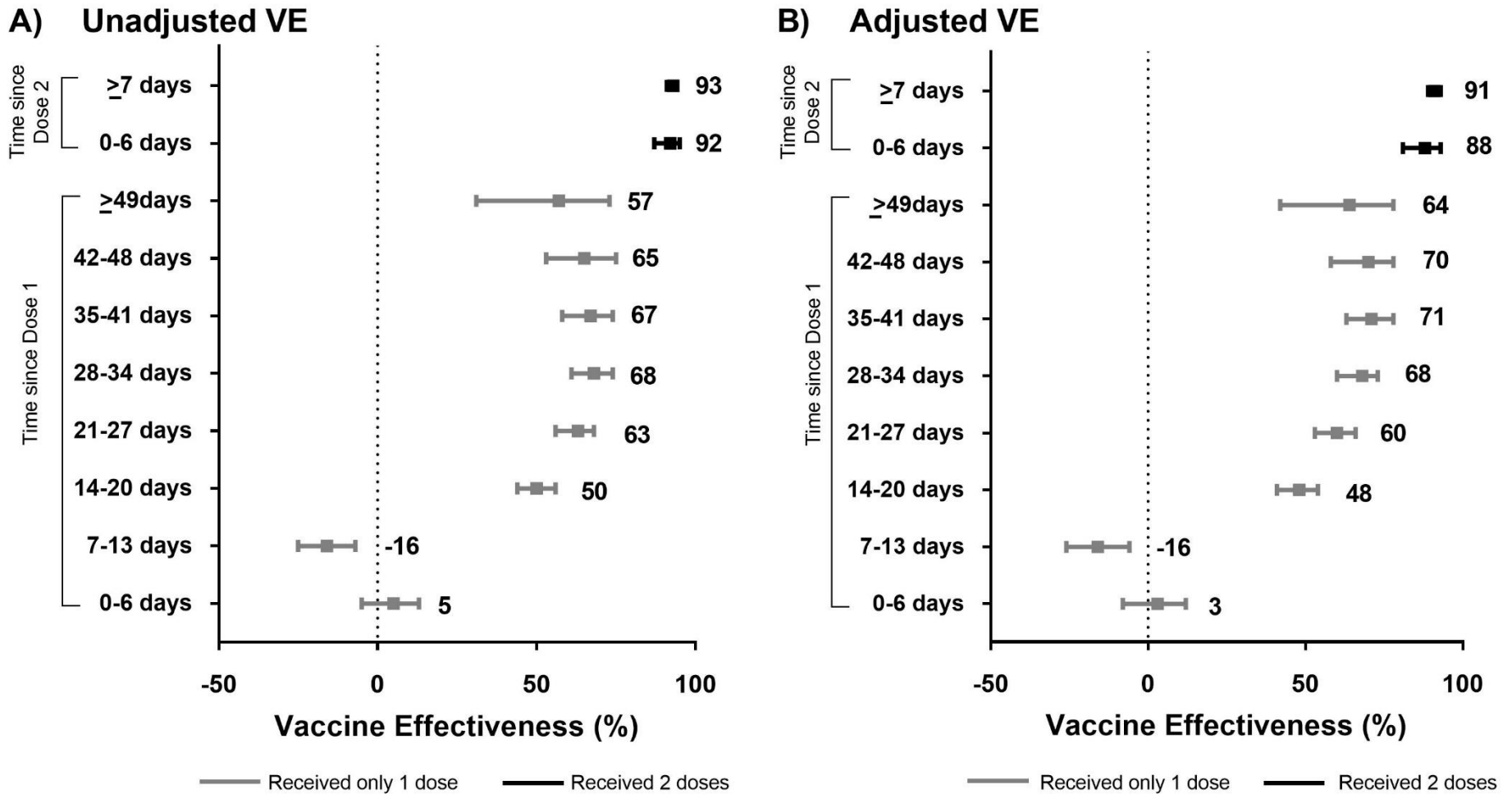
**Figure 1:** Community-dwelling adults included in the tested cohort between 14 December 2020 and 19 April 2021 in Ontario, Canada.



<sup>a</sup>Recorded symptoms not consistent with COVID-19 (e.g., anxiety, cancer, falls)



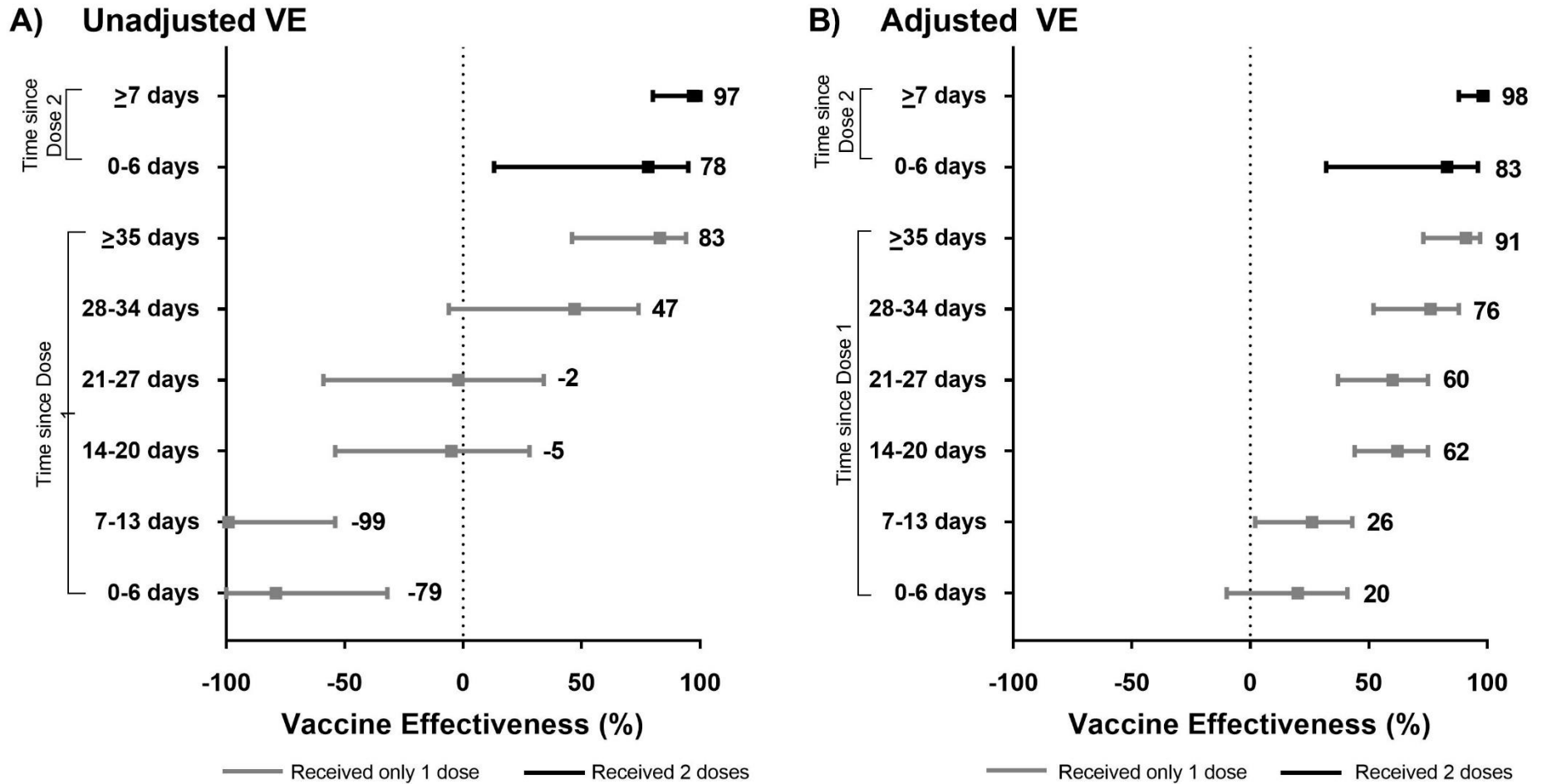
**Figure 2.** Unadjusted (panel A) and adjusted<sup>†</sup> (panel B) vaccine effectiveness estimates of COVID-19 mRNA vaccines (BNT162b2, mRNA-1273) against laboratory-confirmed symptomatic SARS-CoV-2 infection by various intervals, between 14 December 2020 and 19 April 2021 in Ontario, Canada.



<sup>†</sup> Models were adjusted for age, sex, public health unit region, biweekly period of test, number of SARS-CoV-2 tests in the 3 months prior to 14 December 2020, presence of any comorbidity that increase the risk of severe COVID-19, receipt of influenza vaccination in current or prior influenza season, and neighbourhood-level household income, persons per dwelling, proportion of persons employed as non-health essential workers, and self-identified visible minority quintiles.



**Figure 3.** Unadjusted (panel A) and adjusted\* (panel B) vaccine effectiveness estimates of COVID-19 mRNA vaccines (BNT162b2, mRNA-1273) against severe outcomes (hospitalization or death) associated with laboratory-confirmed symptomatic SARS-CoV-2 infection by various intervals, between 14 December 2020 and 19 April 2021 in Ontario, Canada.

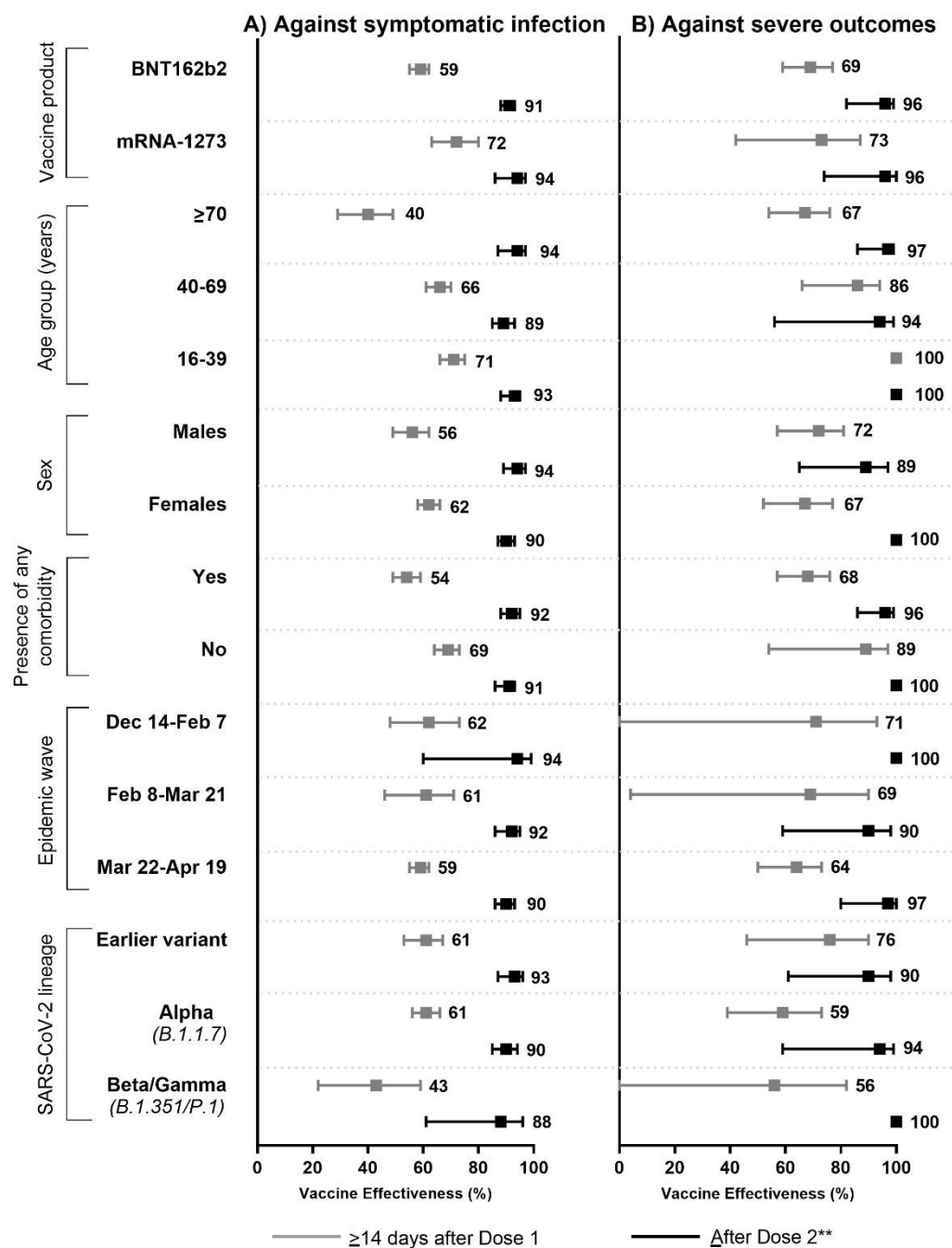


\* Models were adjusted for age, sex, public health unit region, biweekly period of test, number of SARS-CoV-2 tests in the 3 months prior to 14 December 2020, presence of any comorbidity that increase the risk of severe COVID-19, receipt of influenza vaccination in current or prior influenza season, and neighbourhood-level household income, persons per dwelling, proportion of persons employed as non-health essential workers, and self-identified visible minority quintiles.

CONFIDENTIAL

CONFIDENTIAL - DO NOT DISTRIBUTE

**Figure 4.** Adjusted\* vaccine effectiveness estimates  $\geq 14$  days after Dose 1 (for individuals who received only 1 dose) and  $\geq 0$  days after Dose 2 by various factors, including vaccine product, patient characteristics, epidemic wave, and SARS-CoV-2 lineage against laboratory-confirmed symptomatic SARS-CoV-2 infection (panel A) and severe outcomes (hospitalization or death) (panel B) between 14 December 2020 and 19 April 2021.

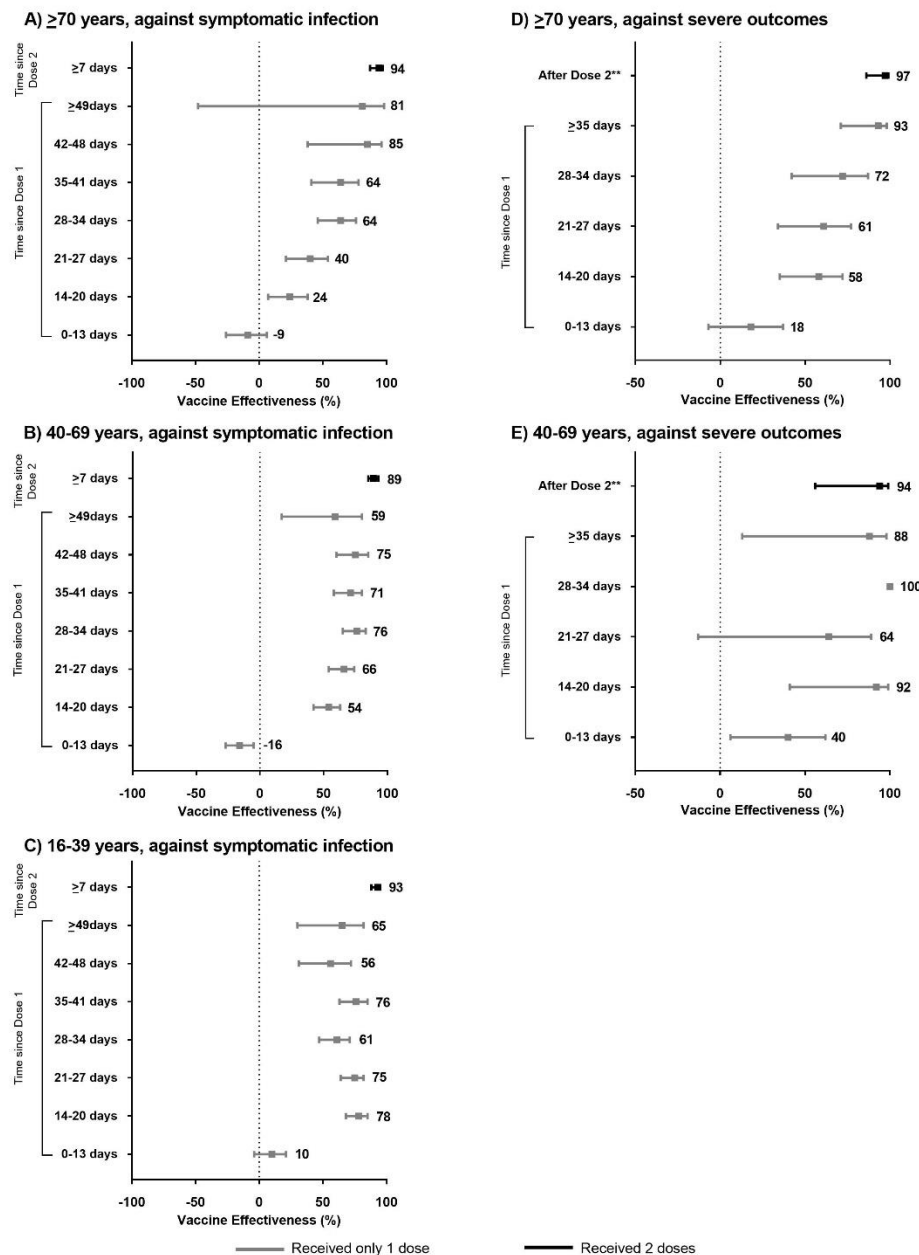


\* Models were adjusted for age, sex, public health unit region, biweekly period of test, number of SARS-CoV-2 tests in the 3 months prior to 14 December 2020, presence of any comorbidity that increase the risk of severe COVID-19, receipt of influenza vaccination in current or prior influenza season, and neighbourhood-level household income, persons per dwelling, proportion of persons employed as non-health essential workers, and self-identified visible minority quintiles (unless adjusted variable was used for stratification).

\*\*For vaccine effectiveness against symptomatic SARS-CoV-2 infection (panel A), this interval was  $\geq 7$  days after Dose 2. However, against serious outcomes (panel B), VE was evaluated for the entire period (i.e.,  $\geq 0$  days) after receipt of the second dose due to the small number of outcomes.

†For subgroup analyses by characteristic and SARS-CoV-2 lineage, individuals vaccinated with either mRNA vaccine was included.

**Figure 5.** Adjusted\* vaccine effectiveness estimates  $\geq 14$  days after Dose 1 and  $\geq 0$  days after Dose 2 in community-dwelling adults in Ontario, Canada against laboratory-confirmed symptomatic SARS-CoV-2 infection for adults aged  $\geq 70$  years (panel A), 40-69 years (panel B), and 16-39 years (panel C) and severe outcomes (hospitalization or death) for adults aged  $\geq 70$  years (panel D) and 40-69 years (panel E), between 14 December 2020 and 19 April 2021.



\* Models were adjusted for age, sex, public health unit region, biweekly period of test, number of SARS-CoV-2 tests in the 3 months prior to 14 December 2020, presence of any comorbidity that increase the risk of severe COVID-19, receipt of influenza vaccination in current or prior influenza season, and neighbourhood-level household income, persons per dwelling, proportion of persons employed as non-health essential workers, and self-identified visible minority quintiles (unless adjusted variable was used for stratification).

\*\* For vaccine effectiveness against symptomatic SARS-CoV-2 infection (panels A, B, and C), this interval was  $\geq 7$  days after Dose 2. Against serious outcomes (panels D and E), vaccine effectiveness was evaluated for the entire period (i.e.,  $\geq 0$  days) after receipt of the second dose due to the small number of outcomes.

CONFIDENTIAL  
CONFIDENTIAL - DO NOT DISTRIBUTE