

1 Abstract (Words): 480
2 Manuscript (Words): 4500
3 Main Text, Figures: 4
4 Main Text, Tables: 0
5 Supplementary Figures: 17
6 Supplementary Files: 6
7 Appendix Figures: 6
8 References: 52
9

10 Type 2 diabetes mellitus accelerates brain aging and cognitive decline:
11 complementary findings from UK Biobank and meta-analyses.

12
13 Botond Antal, M.S.^{1,2}, Liam P. McMahon, B.A.^{1,2}, Syed Fahad Sultan, M.S.³, Andrew Lithen, B.S.^{1,2},
14 Deborah J. Wexler, M.D.⁴, Bradford Dickerson, M.D.^{2,5}, Eva-Maria Ratai, Ph.D.²,
15 Lilianne R. Mujica-Parodi, Ph.D.^{1,2,6}

- 16
17
18
19 1. Department of Biomedical Engineering, Stony Brook University, Stony Brook, New York, USA
20 2. Athinoula A. Martinos Center for Biomedical Imaging, Massachusetts General Hospital and Harvard
21 Medical School, Charlestown, Massachusetts, USA
22 3. Department of Computer Science, Stony Brook University, Stony Brook, New York, USA
23 4. Diabetes Center, Massachusetts General Hospital and Harvard Medical School, Boston, Massachusetts,
24 USA
25 5. Department of Neurology, Massachusetts General Hospital and Harvard Medical School, Boston,
26 Massachusetts, USA
27 6. Department of Neurology, Stony Brook University School of Medicine, Stony Brook, New York, USA
28

29
30 For correspondence, please contact:

31
32 Lilianne R. Mujica-Parodi, Ph.D.
33 Director, Laboratory for Computational Neurodiagnostics
34 Professor, Department of Biomedical Engineering
35 Stony Brook University School of Medicine
36 Stony Brook, NY 11794-5281
37 Email: Lilianne.Strey@stonybrook.edu

38 Abstract

39 **Background:** Type 2 diabetes mellitus is known to be associated with neurobiological and cognitive
40 deficits; however, their extent, overlap with aging effects, and the effectiveness of existing treatments in
41 the context of the brain are currently unknown.

42
43 **Methods:** We characterized neurocognitive effects independently associated with T2DM and age in a
44 large cohort of human subjects from the UK Biobank with cross-sectional neuroimaging and cognitive data.
45 We then proceeded to evaluate the extent of overlap between the effects related to T2DM and age by
46 applying correlation measures to the separately characterized neurocognitive changes. Our findings were
47 complemented by meta-analyses of published reports with cognitive or neuroimaging measures for T2DM
48 and healthy controls (HC). We also evaluated in a cohort of T2DM diagnosed individuals using UK
49 Biobank how disease chronicity and metformin treatment interact with the identified neurocognitive effects.

50
51 **Results:** The UK Biobank dataset included cognitive and neuroimaging data (N=20,314) including 1,012
52 T2DM and 19,302 HC, aged between 50 and 80 years. Duration of T2DM ranged from 0–31 years (mean
53 8.5 ± 6.1 years); 498 were treated with metformin alone, while 352 were unmedicated. Our meta-analysis
54 evaluated 34 cognitive studies (N=22,231) and 60 neuroimaging studies: 30 of T2DM (N=866) and 30 of
55 aging (N=1,088). As compared to age, sex, education, and hypertension-matched HC, T2DM was
56 associated with marked cognitive deficits, particularly in *executive functioning* and *processing speed*.
57 Likewise, we found that the diagnosis of T2DM was significantly associated with gray matter atrophy,
58 primarily within the *ventral striatum*, *cerebellum*, and *putamen*, with reorganization of brain activity
59 (decreased in the *caudate* and *premotor cortex* and increased in the *subgenual area*, *orbitofrontal cortex*,
60 *brainstem* and *posterior cingulate cortex*). The structural and functional changes associated with T2DM
61 show marked overlap with the effects correlating with age but appear earlier, with disease duration linked
62 to more severe neurodegeneration. Metformin treatment status was not associated with improved
63 neurocognitive outcomes.

64
65 **Conclusions:** The neurocognitive impact of T2DM suggests marked acceleration of normal brain aging.
66 T2DM gray matter atrophy occurred approximately $26\% \pm 14\%$ faster than seen with normal aging; disease
67 chronicity was associated with faster atrophy. Mechanistically, our results suggest a neurometabolic
68 component to brain aging. Clinically, neuroimaging-based biomarkers may provide a valuable adjunctive
69 measure of T2DM progression and treatment efficacy based on neurological effects.

70
71 **Funding:** The research described in this paper was funded by the W. M. Keck Foundation (to LRMP), the
72 White House Brain Research Through Advancing Innovative Technologies (BRAIN) Initiative (NSFNCS-
73 FR 1926781 to LRMP), and the Baszucki Brain Research Fund (to LRMP). None of the funding sources
74 played any role in the design of the experiments, data collection, analysis, interpretation of the results, the
75 decision to publish, or any aspect relevant to the study. DJW reports serving on data monitoring committees
76 for Novo Nordisk. None of the authors received funding or in-kind support from pharmaceutical and/or
77 other companies to write this manuscript.

78 Introduction

79 Approximately 6.6% of the global population carries a diagnosis of Type 2 diabetes mellitus (T2DM) ¹.
80 Patients with T2DM are at greater risk for developing dementia and Alzheimer's disease (AD) and have
81 been reported to exhibit inferior cognitive performance when compared to age-matched healthy controls
82 (HC) ². Several human neuroimaging studies have linked T2DM with brain atrophy and cognition ²⁻⁶; recent
83 research suggested that T2DM resulted in a more rapid rate of cognitive decline than typically associated
84 with natural aging ⁷⁻⁹.

85
86 Despite strong preliminary evidence linking T2DM to neurological and cognitive decline, few patients with
87 T2DM undergo a comprehensive neurocognitive evaluation as part of their clinical care ^{8, 10, 11}. This may
88 reflect the fact that T2DM diagnosis often occurs in middle age, hindering dissociation of patients'
89 cognitive changes from normal aging. Several studies published to date focused on the neurocognitive
90 effects of T2DM include age-matched participants. However, because none has compared lifespan
91 neurological changes to those experienced by equivalently aged patients with T2DM, it is currently
92 unknown whether neurocognitive effects represent a T2DM-specific neurodegenerative pathway or the
93 exacerbation of typical brain aging. Moreover, there remain limited data ¹² evaluating the impact of
94 chronicity or role of effective treatment in the progression of cognitive and neurological decline.

95
96 Routine clinical protocols typically focus on peripheral biomarkers (e.g., blood glucose and insulin levels,
97 body fat percentage) as diagnostic modalities for T2DM. However, the neurological effects of T2DM may
98 reveal themselves many years before they can be detected by peripheral markers ^{3, 8}. As such, by the time
99 T2DM is diagnosed and treated by standard measures, patients may have already sustained irreversible
100 brain damage. Thus, there are direct clinical implications with respect to defining the neurocognitive impact
101 of T2DM and to determine how these negative sequelae might be prevented or treated ¹.

102
103 Given these unknowns and their clinical importance, here we focus on addressing three questions. First, we
104 establish T2DM neurocognitive effects, as compared to age, sex, education and hypertension-matched
105 healthy controls (HC). To do so, we leverage the robust statistical power made possible by UK Biobank ¹³,
106 the largest (N=20,314, ages 50-80y) neurocognitive lifespan dataset to date. The UK Biobank results are
107 then compared to a meta-analysis of the published literature (34 cognitive studies, 60 neuroimaging studies)
108 to assess convergence. Second, we ask whether changes in the brain observed in T2DM represent
109 accelerated aging or a non-aging-related degenerative pathway specific to T2DM. Third, we test whether
110 T2DM chronicity exacerbates, and medication status ameliorates, the progression of neurocognitive effects.

111 Methods

112 Analysis of UK Biobank Dataset (N=20,314)

113
114 *General Overview:* UK Biobank data were analyzed for both cognitive and neuroimaging data. Datafield
115 identifiers for all utilized features are shown in **SI File 1**. The primary factor of interest was T2DM, which
116 we dissociated from age-related effects by age matching T2DM and HC. To permit comparison of T2DM-
117 specific effects to age-specific effects, we also assessed the same neurocognitive variables with age as a
118 factor of interest from samples that excluded patients diagnosed with T2DM. To control for potential
119 neurocognitive confounds, T2DM and HC were exact pairwise matched for not only age, but also sex,
120 education, and hypertension status. T2DM status was assessed based on self-reported diagnosis by doctor.
121 We considered education as a binary variable based on possession of a college degree. Hypertension was
122 quantified using measured blood pressure values: all individuals with systolic blood pressure >140 mmHg
123 or diastolic blood pressure >90 mmHg were labeled with hypertension ¹⁴. To exclude potential confounding
124 effects due to menopausal transition, particularly relevant to the youngest age group in our sample (age

125 cutoff >50y), we excluded all female subjects who did not report menopause or if they reported ongoing
126 hormone therapy¹⁵. To minimize the number of individuals with Type 1 diabetes in our sample, rather than
127 Type 2 diabetes, we only included diabetic individuals with a self-reported age of onset ≥ 40 years¹⁶.

128
129 We fitted linear regression models to neurocognitive variables and quantified associated effects as the
130 maximum likelihood point estimates and confidence intervals (95% CIs) of the corresponding regression
131 coefficients. T2DM was accounted for as a binary factor with two states corresponding to healthy controls
132 and individuals diagnosed with T2DM, whereas age was considered as a linear continuous factor with
133 increments in years. The latter was justified given the linear trends we observed across age in all modalities
134 (**Appendix figures 4, 5, 6**). Regression models were fit using the Statsmodels Python library¹⁷. To account
135 for multiple comparisons, we applied Bonferroni correction to cognitive and structural results, and adjusted
136 for false discovery rate in our brain activation results; we report adjusted p values exclusively.

137
138 To determine whether T2DM neurocognitive effects suggested an acceleration of typical aging trajectories,
139 versus non-aging-related degenerative pathways specific to T2DM, we compared the progression of
140 neurodegeneration seen in T2DM to that seen in relation to age across brain regions and cognitive domains
141 using bivariate Pearson correlations.

142
143 *Cognition:* Data on five cognitive domains for 18,829 participants (T2DM: N=914, HC: N=17,915) were
144 extracted from the UK Biobank dataset, including *abstract reasoning*, *executive function*, *processing speed*,
145 *reaction time*, and *numeric memory* (~2-3 seconds). Exact sample sizes varied across cognitive domains
146 based on data availability, and therefore are noted separately for each result (**Appendix figures 1C, 2C**).
147 We employed linear regression and considered the maximum likelihood estimates of coefficients belonging
148 to age and T2DM to estimate their associations with performance in each of the five domains. Effect sizes
149 in cognition were quantified as percentages by dividing the estimated beta coefficient and 95% CIs of the
150 factor of interest with the average performance of HC.

151
152 *Brain Structure:* Using structural MRI data from the UK Biobank dataset, we assessed the effects
153 associated with T2DM (T2DM: N=821, HC: N=821, **Appendix figure 1A**) as compared to non-T2DM-
154 specific age-related effects (N=4,775, **Appendix figure 2A**) on atrophy of gray matter volume; these
155 findings were available in units of mm^3 for the whole brain as well as for 139 anatomical regions. For
156 region-specific analyses, we coarse-grained the default unilateral parcellation provided by UK Biobank into
157 45 bilateral regions and normalized gray matter volumes for head size. We applied linear regression and
158 quantified atrophy in each anatomical region as a relative percentage change in average gray matter volume
159 by dividing the estimated regression coefficients and 95% CIs of the factor of interest with the average gray
160 matter volume of HC.

161
162 *Brain Function:* Using functional MRI data from the UK Biobank dataset, we assessed the effects occurring
163 with T2DM (T2DM: N=646; HC: N=646, **Appendix figure 1B**) as compared to non-T2DM-specific age-
164 related effects (N=2,250, **Appendix figure 2B**) on resting-state brain activity. Data were accessed already
165 preprocessed by UK Biobank according to their standard pipelines¹⁸. After transforming functional images
166 to Montreal Neurological Institute (MNI) space, we performed spatial smoothing with a full width at half
167 maximum (FWHM) of 5 mm, then quantified brain activation by calculating the *amplitude of low-frequency*
168 *fluctuation*¹⁹ (ALFF). We used the program *3dRSFC*, which is a component of Analysis
169 of Functional NeuroImages^{20,21} (AFNI), to compute ALFF in voxel space. ALFF was computed from the
170 0.01–0.08 Hz frequency band, within a gray matter only brain mask. Computed voxel space ALFF values
171 were normalized to the global mean of each individual subject. Statistical analyses were performed in voxel
172 space using the Nistats Python library. We used a significance threshold of $p < 0.05$ and a minimum cluster
173 size of 12 voxels ($\sim 100 \text{ mm}^3$) and controlled for multiple comparisons using false discovery rate (FDR).

174

175 *Implications of T2DM Duration:* To evaluate the implications of T2DM chronicity, we analyzed whole
176 brain gray matter volume with time since T2DM diagnosis as a regressor. Time since diagnosis was derived
177 from self-reported age at T2DM diagnosis. To improve the accuracy of self-reported values, we averaged
178 the reported age of onset values from three visits, separated by multiple years. To estimate the degree to
179 which T2DM progression was associated with gray matter loss relative to age, we calculated the ratio of
180 regression coefficients corresponding to T2DM duration and age, and expressed it as a percentage, using
181 Fieller's theorem²² to quantify the confidence interval (95%) for this ratio.

182
183 *Implications of Metformin Treatment:* For patients with T2DM, we evaluated whether metformin, a first-
184 line medication for the treatment of T2DM, was associated with improved outcomes in terms of cognition,
185 atrophy, and/or brain activation. To isolate medication effects specific to metformin, we compared subjects
186 who reported not taking any medications to treat T2DM, to subjects who reported taking metformin but no
187 other medications. For these comparisons, we exact matched for sex, education, and hypertension, and
188 coarse matched for age (bin size of five years) and disease duration (bin size of three years). Since UK
189 Biobank did not measure HbA1c levels, we also included BMI as a regressor since it was the only available
190 proxy measure for disease severity^{23,24}.

191
192 *Implications of sex:* To determine whether results detected in the sample might be driven by sex-specific
193 factors, we additionally performed analyses separately in females and males. For these, we evaluated our
194 cognitive and neurobiological measures in association with age and T2DM and quantified the overlap
195 separately for the two subsamples.

196 197 **Meta-Analysis of Published Literature (N=24,185)**

198
199 *Search strategy and selection criteria (cognition):* We conducted a literature search for peer-reviewed
200 articles published up to August 28, 2020 from PubMed/Medline using the following search terms: "type-2-
201 diabetes," "diabetes mellitus, type 2," "insulin-resistance," <AND> "cognition," "cognitive-function,"
202 "cognitive-dysfunction," "cognitive-performance," and "neuropsychological tests." Search results were
203 filtered to include manuscripts that had undergone peer-review, were published in English with full-text
204 availability, and reported relevant results. Our cognitive meta-analysis adhered to PRISMA guidelines²⁵.

205
206 We included studies that compared cognitive performance between people diagnosed with T2DM and
207 healthy controls. We excluded studies that: (a) included participants with neurological or psychiatric
208 diagnoses, (b) utilized treatment interventions without first obtaining baseline cognitive measurements, (c)
209 included only diagnostic threshold instruments for dementia (e.g., the Mini-Mental State Examination, or
210 MMSE), (d) included a novel cognitive test without adequate explanation of the scoring procedures, (e) did
211 not perform age and education-matching of the participants diagnosed with T2DM to their HC, or (f) failed
212 to provide summary statistics needed to calculate effect sizes. In the latter case, the authors were contacted
213 to obtain relevant data.

214
215 Our literature search yielded 219 articles; relevant reviews were also screened for eligible studies. Seventy-
216 five articles were identified for full-text evaluation; 34 studies were eligible for inclusion. Among the
217 studies that were excluded (**SI File 2**), eight featured inadequate testing or scoring procedures, 14 included
218 secondary analyses of the same patient sample that was used in previous publications, and five failed to
219 perform appropriate education-matching of the study groups. Furthermore, one longitudinal study did not
220 report baseline scores and another reported inconsistent sample sizes. Fifteen authors were contacted to
221 obtain data not provided in the text; three authors provided the data requested, and the remaining 12 studies
222 were excluded. Eligible studies included a total of 4,735 subjects diagnosed with T2DM and 17,496 HC
223 (**SI File 3**).

224

225 *Data analysis (cognition):* We extracted data including publication year, authors, sample demographics,
226 and cognition from all included studies. We extracted baseline data only from longitudinal studies to avoid
227 practice effects. We sorted individual cognitive tests into several domains, including *abstract reasoning,*
228 *executive function, processing speed, numeric memory, visual memory, verbal memory, verbal fluency,*
229 *visuospatial reasoning, and working memory (SI File 4).*

230
231 Statistical analyses were performed using R version 3.6.1²⁶ and the Metafor package version 2.4-0²⁷.
232 Cognitive differences between participants diagnosed with T2DM and HC were determined by calculating
233 standardized mean difference (SMD) effect sizes and 95% CIs for all cognitive domains. Effect size
234 analyses were chosen to account for within-domain variability in the type and sensitivity of cognitive tests
235 across different reports. We calculated effect sizes as Cohen's d by dividing the mean difference in group
236 scores by the pooled standard deviation of individual domains²⁸; an SMD (Cohen's d) of -1.0 was
237 interpreted as a difference of one standard deviation in the negative direction. We used random-effects
238 models to account for variability between samples not due to sampling error with significance at $p < 0.05$
239 and effect-size heterogeneity was evaluated using values for Cochran's Q and I^2 ²⁹. Publication bias was
240 evaluated with funnel plots. We applied Bonferroni correction to account for multiple comparisons across
241 cognitive domains.

242
243 *Search strategy and selection criteria (brain):* We used NeuroQuery³⁰ to conduct a meta-analysis of
244 published neurobiological results associated with T2DM and age. NeuroQuery is an automated Coordinate-
245 Based Meta-Analysis (CBMA)³¹⁻³³ tool based on a database of z-scores collected by crawling through texts
246 and tables of published research articles by an automated algorithm³⁴. We utilized NeuroQuery to address
247 limitations of standard approaches to meta-analyses of neuroimaging results, which rely on summary
248 statistics and thus risk overfitting to what typically comprise a relatively small number of in-sample studies
249 (i.e., they fail to generalize to out-of-sample studies). NeuroQuery optimizes for rigor and reproducibility
250 by utilizing predictive modeling, a higher threshold for results than statistical significance. In a quantitative
251 evaluation of its generalization performance with 16-fold cross validation and 10:90 test-train splits,
252 NeuroQuery was found to accurately produce brain maps for out-of-sample neuroimaging studies³⁴. We
253 note that because of NeuroQuery's criteria for neuroimaging data quality and completeness in reporting,
254 the algorithm draws only from journals that focus on functional neuroimaging results, and thus can exclude
255 some general interest and non-neurological medical journals. This exclusion criterion is important to reduce
256 false positives and ensure the quality and relevance of the compiled results. The database in total contains
257 149,000 neuroimaging papers and represents the single largest database of neuroimaging foci to date. By
258 the law of large numbers NeuroQuery therefore provides the most unbiased approach to choosing
259 representative papers, even at the risk of excluding relevant and well-cited articles specific to any one field.

260
261 Using the collected database of articles, NeuroQuery applies a multivariate model to predict the spatial
262 distribution of voxel activations corresponding to a search term. The search terms we used to obtain the
263 meta-analytic maps were: "diabetic" and "age". These terms identified the 30 most relevant neuroimaging
264 studies for T2DM and 30 most relevant neuroimaging studies for age (SI File 5). To account for any errors
265 in the automated search results, the identified set of studies were cross-validated by an independent manual
266 search using the same search terms for Google Scholar and PubMed to verify their relevance, as well as to
267 confirm that they included T2DM age-matched HC and T2DM (not Type 1 diabetes). In the T2DM
268 datasets, 23 were fMRI (ALFF), two were structural (T1), three were FDG positron emission tomography
269 (PET), and two were tractography (diffusion tensor imaging, DTI). In the age datasets, 22 were fMRI
270 (ALFF), three were structural (T1), and five were tractography (diffusion tensor imaging, diffusion
271 weighted imaging).

272
273 *Data analysis (brain):* For region and voxel level comparisons of the meta-analytic T2DM and Age maps
274 from Neuroquery with their structural and functional counterparts from UK Biobank, the meta-analytic
275 statistical maps were transformed onto comparable coordinate space and spatial resolution. At the voxel

276 level, the meta-analytic maps were resampled to the standard MNI affine (the transformation matrix that
277 maps from voxel indices of the data array to actual real-world locations of the brain; no registration was
278 required as images were already aligned). For region level comparisons, the transformed voxel maps were
279 coarse-grained to the 45 regions of interest from UK Biobank by masking with each individual region and
280 computing the mean activation of the masked voxels as the representative region value.

281 Results

282 Cognitive Correlates with Age and T2DM

283
284 Individuals without T2DM showed age-based cognitive effects across all domains in the UK Biobank
285 (**Figure 1A**). The strongest effects were observed in *executive function*, which showed $1.9\% \pm 0.1\%$
286 decrease in performance per year ($N=2,450$, $T=-17.2$, $p<1e-10$) and *processing speed*, which showed 1.5%
287 $\pm 0.2\%$ decrease in performance per year ($N=2,525$, $T=-22.8$, $p<1e-10$). Our analyses identified further
288 cognitive deficits associated with T2DM that were consistent with accelerated age-related cognitive decline
289 (**Figure 1B**). As with aging, the strongest T2DM effects were also observed in *executive function*, which
290 showed a further $13.1\% \pm 6.9\%$ decrease in performance, beyond age-related effects (T2DM: $N=446$; HC:
291 $N=446$; $T=-3.7$, $p=0.001$), and *processing speed*, which showed a further $6.7\% \pm 3.2\%$ decrease in
292 performance, beyond age-related effects. (T2DM: $N=454$; HC: $N=454$; $T=-4.1$, $p=0.0002$). A more modest
293 decline ($3.7\% \pm 2.3\%$) was observed in *numeric memory* (~2-3 seconds) (T2DM: $N=483$; HC: $N=483$; $T=-$
294 3.2 , $p=0.007$), whereas *abstract reasoning* (T2DM: $N=886$; HC: $N=886$; $T=-2.4$, $p=0.08$) and *reaction*
295 *time* (T2DM: $N=914$; HC: $N=914$; $T=-1.0$, $p=0.32$) were not statistically significant. Our meta-analysis
296 confirmed that individuals with T2DM exhibited markedly lower performance when compared to age and
297 education-matched controls, over an even broader set of domains (**Figure 1C**). These again included
298 *executive function* ($K=18$, $d=-0.40$, $p=0.009$), *processing speed* ($K=31$, $d=-0.34$, $p=5e-8$), and *numeric*
299 *memory* (~2-3 seconds) ($K=16$, $d=-0.21$, $p=0.05$), as well as *abstract reasoning* ($K=8$, $d=-0.36$, $p=1e-7$),
300 *immediate* (~30 seconds) *verbal memory* ($K=23$, $d=-0.39$, $p=0.001$), *delayed* (~20 minute) *verbal memory*
301 ($K=21$, $d=-0.21$, $p=0.005$), *verbal fluency* ($K=25$, $d=-0.37$, $p=2e-8$), *visuospatial reasoning* ($K=13$, $d=-$
302 0.32 , $p=4e-7$), and *working memory* ($K=12$, $d=-0.36$, $p=0.002$) (**SI File 6**).

304 Neurobiological Correlates with Age and T2DM

305
306 *Brain Atrophy*: HC ($N=4,775$) showed a linear decrease in brain gray matter with age. This was most
307 pronounced in the *ventral striatum*, which showed a $1.0\% \pm 0.06\%$ decrease per year ($T=-30.4$, $p<1e-10$)
308 and *Heschl's gyrus*, which also showed a $0.9\% \pm 0.06\%$ decrease per year ($T=-30.4$, $p<1e-10$) (**Figure**
309 **2A**). As compared to their age-matched HC, T2DM patients showed further decreases in gray matter
310 beyond typical age-related effects (T2DM: $N=821$; HC: $N=821$). These included both cortical and
311 subcortical regions, with the most severe atrophy observed in the *ventral striatum*, which showed on
312 average a $6.2\% \pm 1.6\%$ further decrease in volume, beyond age-related effects ($T=-7.5$, $p<1e-10$), in the
313 *cerebellum* with an additional $4.9\% \pm 1.1\%$ decrease in volume, beyond age-related effects ($T=-8.8$, $p<1e-$
314 10), and in the *putamen*, which showed a $4.7\% \pm 2.3\%$ further decrease, beyond age-related effects ($T=-$
315 4.1 , $p=0.002$) (**Figure 2B**).

316
317 *Brain Activity*: Age was associated with functional reorganization of brain activation (ALFF), rather than
318 global decrease or increase. Brain activation in T2DM showed similar reorganization. Normalized to whole
319 brain activation, both age (HC: $N=2,250$) and T2DM (T2DM: $N=646$, HC: $N=646$) were associated with
320 decreased activation in the *caudate and premotor cortex*, and with increased brain activity in the *subgenual*
321 *area, orbitofrontal cortex, posterior cingulate cortex and brainstem* (**Figure 3A**).

322

323 *Neuroquery*: Our meta-analysis of 60 multimodal neuroimaging studies (30 age-specific, 30 T2DM-
324 specific) independently identified the same regions as UK Biobank (*premotor cortex, caudate, posterior*
325 *cingulate gyrus*), but additionally identified clusters of decreased activity in *Broca area* and the *frontal eye*
326 *fields* and increased activity in the *thalamus*, and *inferior temporal gyrus* (**Figure 3B**).

327 328 **Neurocognitive Changes Associated with T2DM and Age Overlap, Consistent with Common** 329 **Pathways**

330
331 Together, these analyses confirm that T2DM patients show evidence of neurocognitive deficits, with the
332 most consistent and profound effects observed in structural atrophy. Even after controlling for education,
333 cognitive deficits remained statistically significant. Both age and T2DM implicated the same areas of
334 greatest vulnerability: for brain atrophy, these were the *ventral striatum, Heschl's gyrus and cerebellum*;
335 for cognition, these were *executive function* and *processing speed*. When assessed across all brain regions,
336 T2DM-related patterns in brain atrophy exhibited strong overlap with those associated with age ($r=0.60$,
337 $p=0.0002$) (**Figure 2-figure supplements 1 and 2A**). Similarly, T2DM-related changes in brain activation
338 (ALFF) also exhibited significant overlap with those associated with age ($r=0.64$, $p=0.00004$) (**Figure 3-**
339 **figure supplements 1 and 2B**). The meta-analysis, which included multimodal neuroimaging measures
340 (not only atrophy and brain activity, but also glucose uptake via FDG-PET) also yielded equivalent results
341 in terms of the overlap between neurobiological effects of T2DM and age ($r=0.58$, $p=0.0005$) (**Figure 2-**
342 **figure supplements 1 and 2C**).

343 344 **T2DM Chronicity Exacerbates Neurocognitive Symptoms**

345
346 Neurocognitive effects were more severe with increased disease duration, particularly for structural changes
347 ($T=-3.8$, $p=0.0002$) (**Figure 4**). T2DM progression was associated with $26\% \pm 14\%$ acceleration of typical
348 neurogenerative age-related effects, as per the linear shift along the horizontal time axis shown in **Figure**
349 **4**.

350 351 **T2DM Patients Treated with Metformin Do Not Demonstrate Improved Neurocognitive Symptoms**

352
353 Even after matching groups for disease duration and controlling for BMI, T2DM patients who were treated
354 with metformin alone ($N=498$) did not differ with respect to cognition or brain atrophy compared to T2DM
355 patients who were unmedicated ($N=352$) (**Figure 1-figure supplement 3 and Figure 2-figure supplement**
356 **8**). Likewise, treatment status showed no significant impact on resting-state brain activity.

357 358 **Age and T2DM Associated Effects were Consistent in Females and Males**

359
360 For the UK Biobank dataset, we identified marked sex-related differences both in neurobiological and
361 cognitive measures, consistent with the literature (**Figure 1-figure supplement 1, Figure 2-figure**
362 **supplement 3, Figure 3-figure supplement 3**)^{35, 36}. All reported age and T2DM effects were seen for
363 both males and females, and strongly correlated between them (**Figure 2-figure supplement 6, Figure 3-**
364 **figure supplement 5**). However, age and T2DM effects were stronger in males (**Figure 1-figure**
365 **supplement 2, Figure 2-figure supplement 5, Figure 3-figure supplement 4**) and neurodegeneration
366 (brain atrophy, in particular) was more similar across sex for age ($r_{\text{age}}=0.93$, Bonferroni corrected $p \leq 0.001$)
367 than for T2DM ($r_{\text{T2DM}}=0.51$, Bonferroni corrected $p \leq 0.01$). Consistent with the latter, the overlap between
368 effects associated with age and T2DM was statistically significant in males (gray matter volume: $r=0.77$,
369 $p=4e-9$; brain activation (ALFF): $r=0.51$, $p=0.002$) but not in the female-only subsample (**Figure 2-figure**
370 **supplement 6, Figure 2-figure supplement 7, Figure 3-figure supplement 5, Figure 3-figure**
371 **supplement 6**). All females in our UK Biobank sample were menopausal and not on hormone replacement
372 therapy. For our meta-analyses, we were unable to perform a sex-based comparison, as the underlying
373 articles from which our data were derived from did not always perform sex-matching across their subject

374 pools and did not provide access to the individual subject-level data that would be required to control for
375 sex in our analyses.
376

377 Discussion

378 The UK Biobank dataset confirms that T2DM patients show deficits in cognitive performance compared to
379 HC, even after controlling for age, sex, education, and hypertension. These findings were supported by
380 meta-analysis of the published literature. Deficits in cognitive performance were accompanied by marked
381 brain atrophy in the T2DM sample as compared to age-matched HC. The atrophy was most severe (6.2%
382 grey matter loss compared to HC) in the *ventral striatum*, a region critical to learning, decision making,
383 goal-directed behavior, and cognitive control. These cognitive functions, collectively known as *executive*
384 *functioning*, were (with *processing speed*) also those most affected by T2DM. Neurodegeneration severity
385 for all regions increased with longer disease duration. We detected qualitatively consistent results in females
386 and males; however, males exhibited stronger effects in relation to T2DM (**Figure 2-figure supplement**
387 **4**). This result is consistent with the well-established neuroprotective effects of female hormones such as
388 estrogen³⁷. This result also suggests that the T2DM neurological effects observed result from chronic
389 degenerative processes which, for our female participants, may have been at least partially ameliorated
390 prior to menopause.

391
392 Our findings indicate that structural brain imaging, in particular, can provide a clinically valuable metric
393 for identifying and monitoring neurocognitive effects associated with T2DM. Normalizing across sample
394 sizes to compare the measures of neurocognitive effects: *structural MRI*, *functional MRI*, and *cognitive*
395 *testing*, structural atrophy showed global effects that were far more statistically robust ($p < 2e-10$) than either
396 global cognitive measures ($p = 0.0001$) or global brain activation ($p = 0.002$). One additional advantage of
397 structural MRI over cognitive testing is that the former avoids confounding associated with education and
398 practice effects, and therefore may be more interpretable in real-world clinical settings in which matching
399 for education and practice effects is not feasible. Structural MRI also showed advantages as a biomarker
400 over a functional MRI-derived measure of brain activation (ALFF). The reorganization of brain activity
401 seen with T2DM may reflect the brain's switch to less metabolically expensive networks to conserve energy
402 in the face of diminishing access to glucose, a pattern previously documented in aging³⁸⁻⁴¹. Yet activation
403 patterns that are spatially reorganized, rather than globally increased or decreased, are less straightforward
404 to quantify. Moreover, functional MRI is an inherently more complex measure than structural MRI,
405 reflecting both neuronal and hemodynamic influences. Each of these of these influences may be
406 differentially affected by T2DM, further complicating its interpretation in a clinical setting.

407
408 The localization of brain atrophy in T2DM to the *ventral striatum*, followed by the *cerebellum*, may reflect
409 the fact that these two brain regions contain the densest concentrations of insulin-dependent GLUT-4⁴²⁻⁴⁵,
410 as compared to non-insulin-dependent isoforms GLUT-1 and GLUT-3. The *ventral striatum* functions as
411 a critical hub within the reward circuit, integrating inputs (including external stimuli) from both cortical
412 and subcortical regions, and therefore is a key structure required for all learning. Rat studies have shown
413 modulation of nitric oxide within the *ventral striatum* to control release of acetylcholine⁴⁶, a
414 neurotransmitter severely reduced in dementia⁴⁷ and a target for its pharmaceutical treatment^{48,49}. Release
415 of nitric oxide is insulin dependent and reduced in T2DM⁵⁰. Together, these suggest a potential mechanistic
416 pathway between insulin resistance, atrophy of the *ventral striatum*, and widespread deficits with respect
417 to learning. In this context, memory deficits may be primarily driven by failure to *encode* rather than failure
418 to *retrieve*, which would be consistent with our results which did not identify the hippocampus as be one
419 of the regions most affected. Importantly, the structural and functional changes associated with T2DM
420 show marked overlap with age-related effects but appear earlier. This on one hand suggests that
421 neurocognitive changes seen in T2DM may progress via a common mechanistic trajectory as normal brain

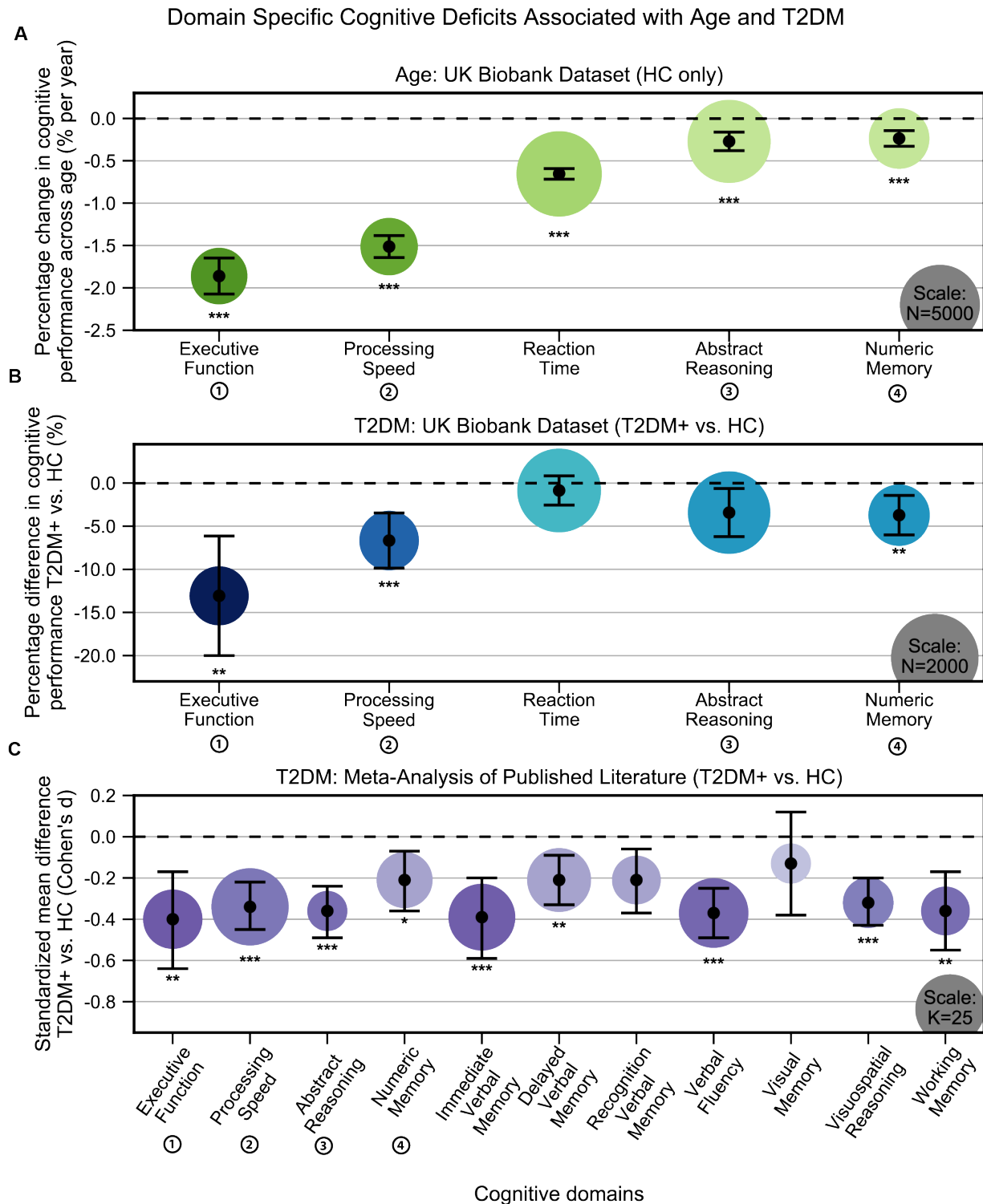
422 aging, but which is accelerated. From another perspective, the overlap implies that brain aging itself may
423 be a metabolic syndrome driven by impaired brain insulin signaling and glucose metabolism, the same
424 processes that, outside the brain, are well-established with respect to T2DM.

425
426 Our analyses had two limitations, inherent in the datasets analyzed, which represent important directions
427 for future research. First, our use of a lifespan dataset permitted tracking how variables change with age,
428 but not for the same subjects. A more rigorous assessment of phase shift between trajectories of
429 neurodegeneration for patients with T2DM and HC would be made possible only with a longitudinal study.
430 Second, while we had access to disease duration and BMI, we did not have HbA1c measures, which would
431 have provided a more direct measure of disease severity. While metformin was not found to be associated
432 with better neurocognitive measures, even when matched to unmedicated patients with equivalent disease
433 duration and after controlling for BMI (a proxy measure for disease severity^{23, 24}), it was not possible to
434 determine other diabetes-related characteristics. As such, our medication findings should be considered
435 suggestive but not conclusive.

436
437 Consistent with findings from earlier studies that focused on the brain and energy metabolism^{51, 52}, we
438 suggest that the T2DM and its progression may be associated with accelerated brain aging. As T2DM results
439 in compromised energy availability, brain structure and function undergo accelerated deterioration. We
440 consider the possibility that, by the time T2DM is formally diagnosed, neuronal insulin resistance may have
441 already resulted in significant brain damage. As such, our findings underscore the need for additional
442 research into brain-based biomarkers for T2DM and treatment strategies that specifically target its neuro-
443 cognitive effects¹.

444

445 **Figures**

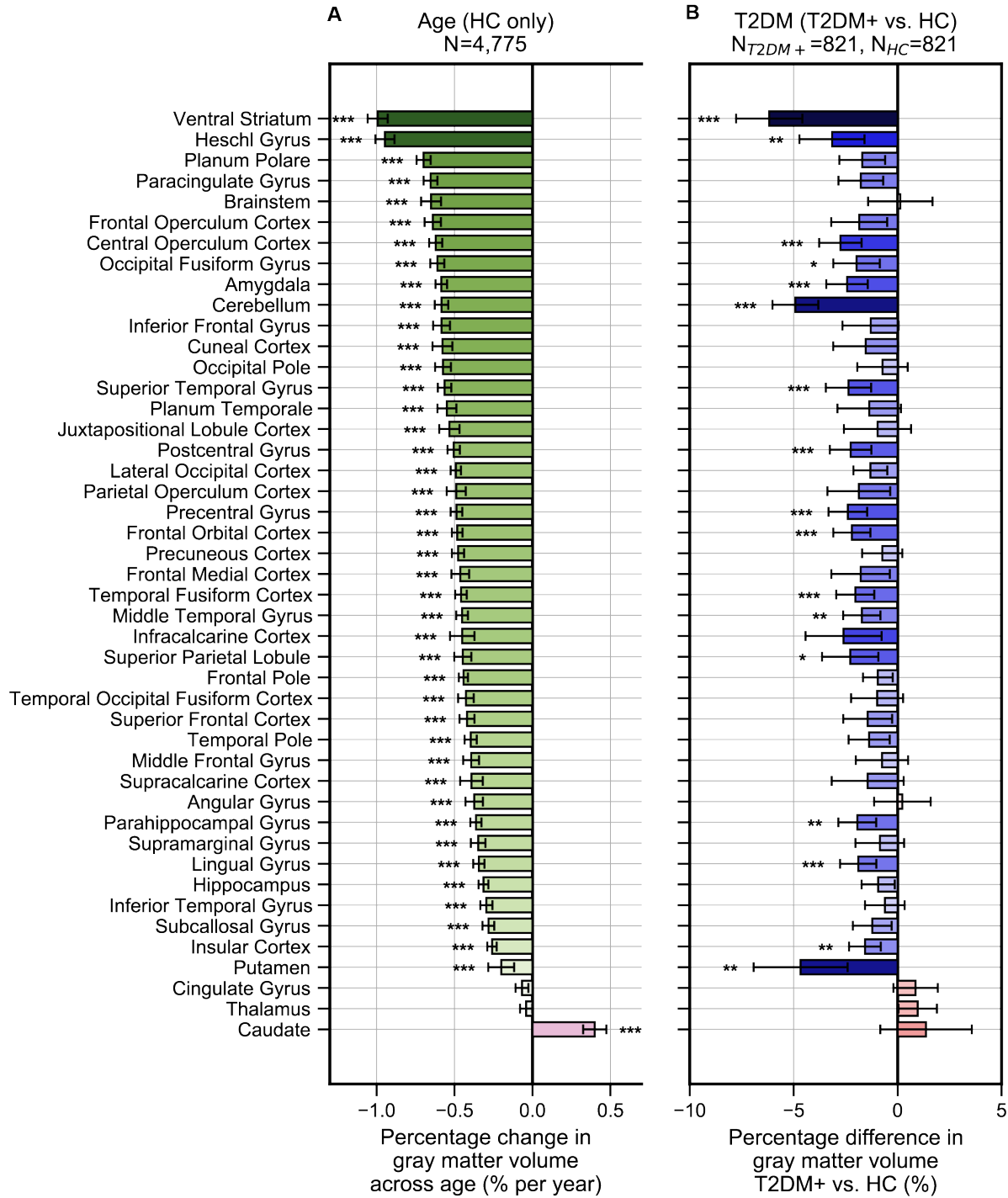


446
 447 **Figure 1: Cognitive deficits are apparent with respect to both age and T2DM diagnosis. A:** Using the
 448 UK Biobank dataset, we performed a quantitative analysis of the effects related to age on cognitive
 449 performance across five cognitive domains. Associated changes were derived from estimated regression

450 coefficients as percentages and are shown on the y axis. Age was associated with significant deficits in all
451 five domains, with the strongest effects observed in *executive function* and *processing speed*. **B:** Using the
452 same dataset, we also analyzed cognitive performance in T2DM, with negative values on the y-axis
453 representing performance below that of age, sex, and education-matched HC. As per age effects, *executive*
454 *function* and *processing speed* showed the highest magnitude changes. **C:** Cognitive deficits identified in
455 UK Biobank data were confirmed by our meta-analysis, which included 11 domains from 34 studies.
456 Average effect sizes (Cohen's d) corresponding to T2DM are shown on the y axis. Values below the cut-
457 off line ($y=0$) indicate cases in which subjects with T2DM performed less well than age and education-
458 matched HC. Numbers next to labels identify domains common across panels. Marker sizes represent
459 sample sizes scaled (per area) as indicated in the bottom right corner of each panel. On Panel C, sample
460 size indicates the number of individual studies. Underlying sample size distributions can be found in
461 **Appendix figures 1C and 2C**. Error bars are 95% CI. $*P \leq 0.05$; $**P \leq 0.01$; $***P \leq 0.001$, Bonferroni
462 corrected.
463

464
465

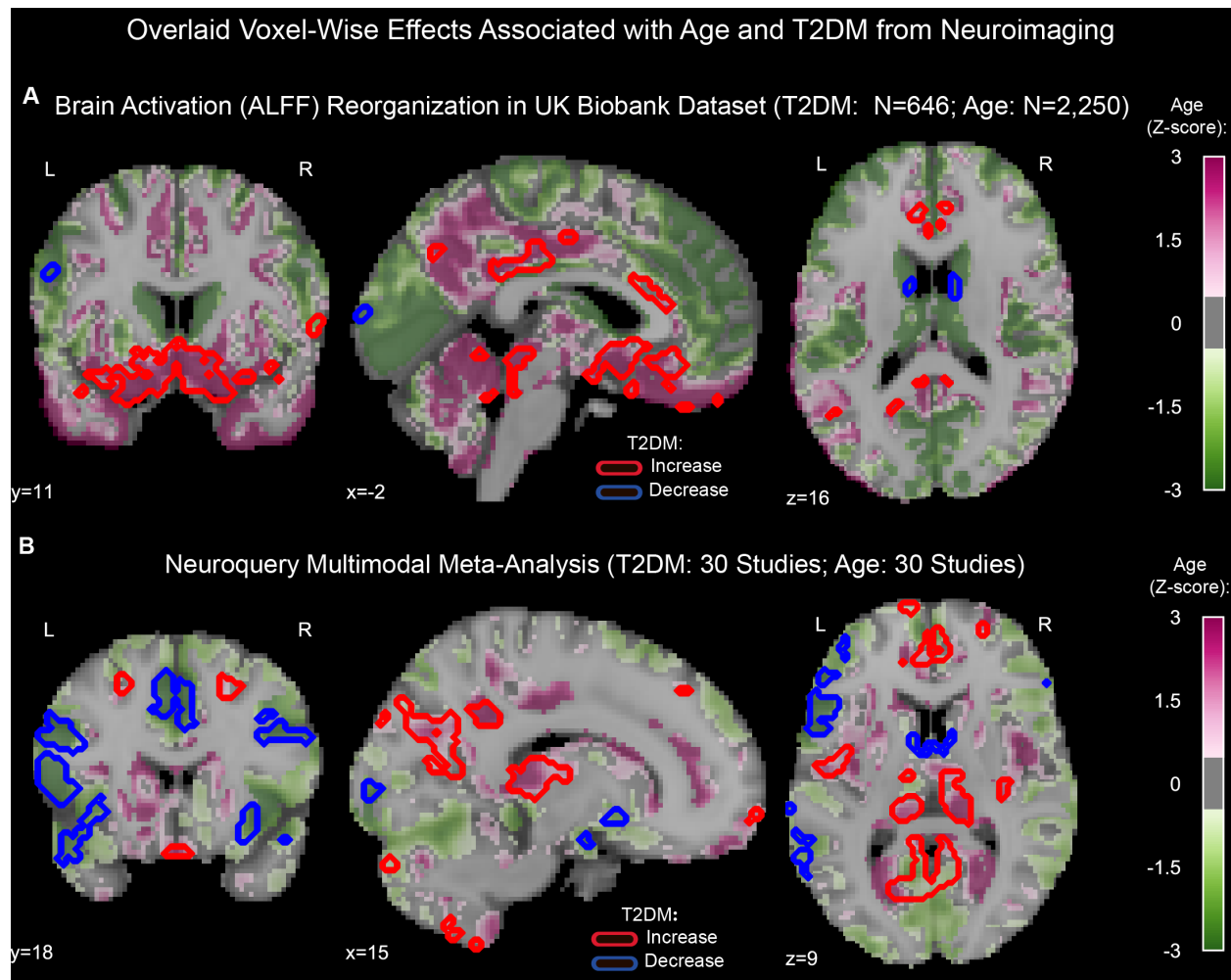
Region Specific Gray Matter Volume Changes
Associated with Age and T2DM: UK Biobank Dataset



466
467 **Figure 2: Widespread gray matter atrophy can be observed with respect to both age and T2DM**
468 **diagnosis status.** Using the UK Biobank dataset, we measured gray matter atrophy across 45 anatomical
469 regions. Associated changes were derived from estimated regression coefficients as percentages and are

470 shown on the x axes. **A:** We observed significantly decreased gray matter volume in both cortical and
471 subcortical brain regions with respect to age in HC. Age was associated with an average of ~0.5% brain-
472 wide decrease in gray matter volume per year, most prominently for the *ventral striatum* and *Heschl's gyrus*
473 **B:** Gray matter atrophy was also seen in patients diagnosed with T2DM compared to age matched HC,
474 most prominently for the *ventral striatum*, *cerebellum*, and *putamen*. The distribution of T2DM-related
475 effects overlapped with those associated with age, with degeneration of the *ventral striatum* and
476 preservation of the *thalamus* and *caudate*. Underlying sample size distributions can be found in **Appendix**
477 **figures 1A and 2A**. Error bars are 95% CI. * $P \leq 0.05$; ** $P \leq 0.01$; *** $P \leq 0.001$, Bonferroni corrected.
478

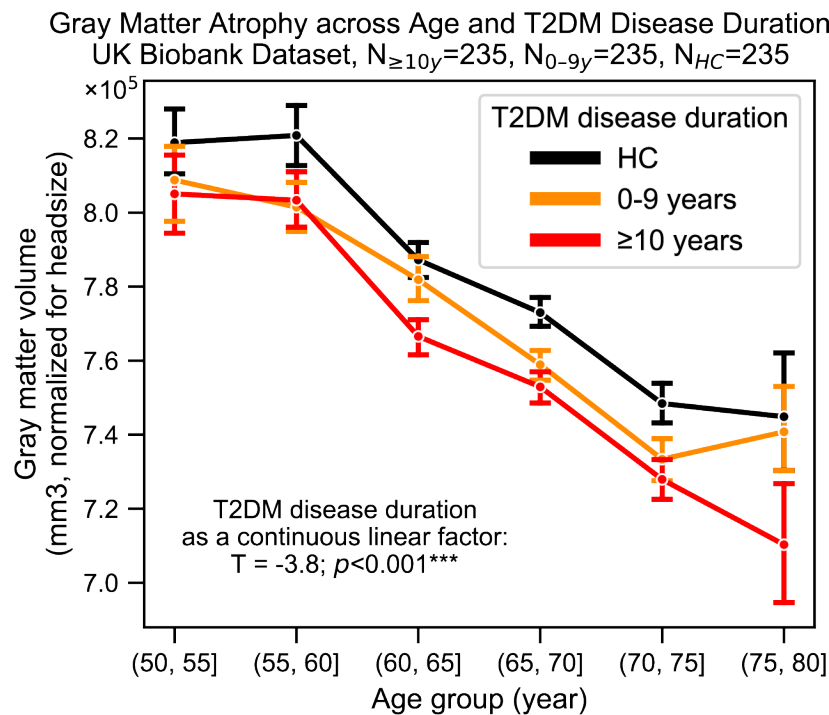
479



480
481
482
483
484
485
486
487
488
489
490
491
492
493
494
495
496
497
498

Figure 3: Age and T2DM associated reorganization patterns in brain activity are significant and overlap. **A:** For functional MRI data obtained from the UK Biobank dataset, we used the amplitude of low-frequency fluctuation (ALFF) to quantify brain activation. Effects linked to age are shown in the form of an unthresholded z-map represented by the pink-green color gradient, with pink indicating increased activation and green showing decreased. T2DM related effects were thresholded (minimum cluster size $\sim 100\text{mm}^3$, FDR $p < 0.05$) to result in significant clusters. The outlines of these significant clusters are overlaid on the age-related z-map to demonstrate overlapping effects. The largest significant clusters with respect to T2DM were in the *subgenual area* (increased) *orbitofrontal cortex* (increased), the *premotor cortex* (decreased) and the *caudate* (decreased). The highlighted regions were similarly impacted across age, indicating substantial overlap between the two contrasts. Underlying sample size distributions can be found in **Appendix figures 1B and 2B**. **B:** Using multimodal neuroimaging data, we performed a meta-analysis for the same contrasts using NeuroQuery. We extracted contrast maps for age and T2DM with NeuroQuery and overlaid the outlines of thresholded (minimum cluster size $\sim 100\text{mm}^3$, FDR $p < 0.05$) z-maps from T2DM on unthresholded z-maps belonging to age. The overlapping effects were present in several regions, most importantly in the *posterior cingulate gyrus*, *thalamus*, *caudate*, and *premotor cortex*. These results support the hypothesis that neurodegeneration in both T2DM and aging may be associated with common mechanistic pathways.

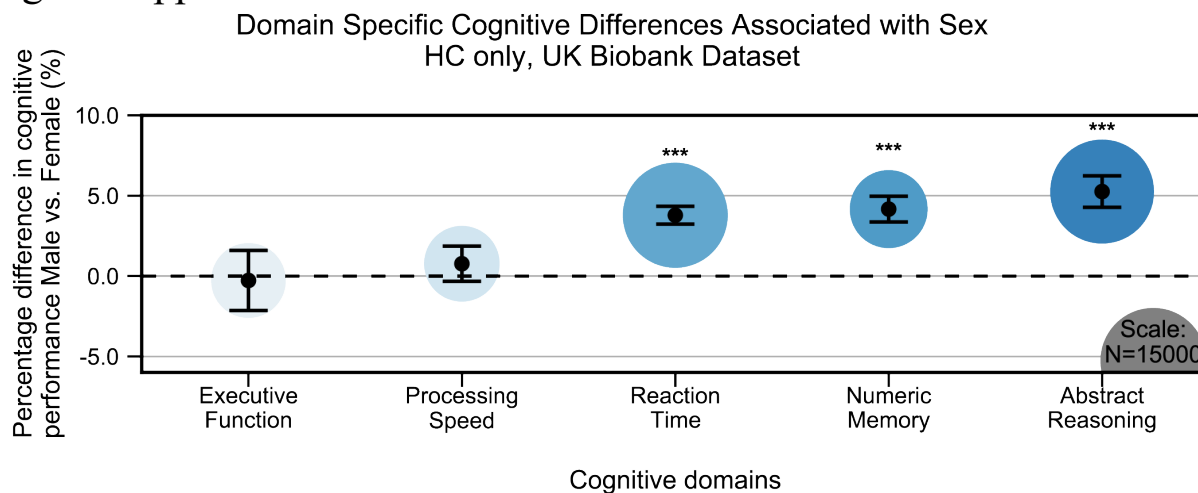
499



500
501 **Figure 4: Progression of T2DM disease is significantly associated with gray matter atrophy,**
502 **accelerating neurodegenerative effects seen in brain aging.** For a quantitative evaluation of the impact
503 of T2DM progression on gray matter volume, we considered time since T2DM diagnosis as the main factor
504 of interest from the UK Biobank dataset. The T2DM+ cohort was divided into two groups based on disease
505 duration (separated at 10 years) with a HC cohort also included for visualization purposes. We matched
506 age, sex, education, and hypertension across these three groups and performed linear regression within
507 T2DM+ subjects focusing on disease duration. Evaluation of our sample suggested that time since diagnosis
508 was a significant factor, with each year after diagnosis of T2DM associated with an additional $\sim 0.26 \pm 0.14$
509 years of brain aging beyond that of age-matched HC. Underlying sample size distributions can be found in
510 **Appendix figure 3.** Error bars are standard error of the mean. $*P \leq 0.05$, $**P \leq 0.01$, $***P \leq 0.001$.
511

512

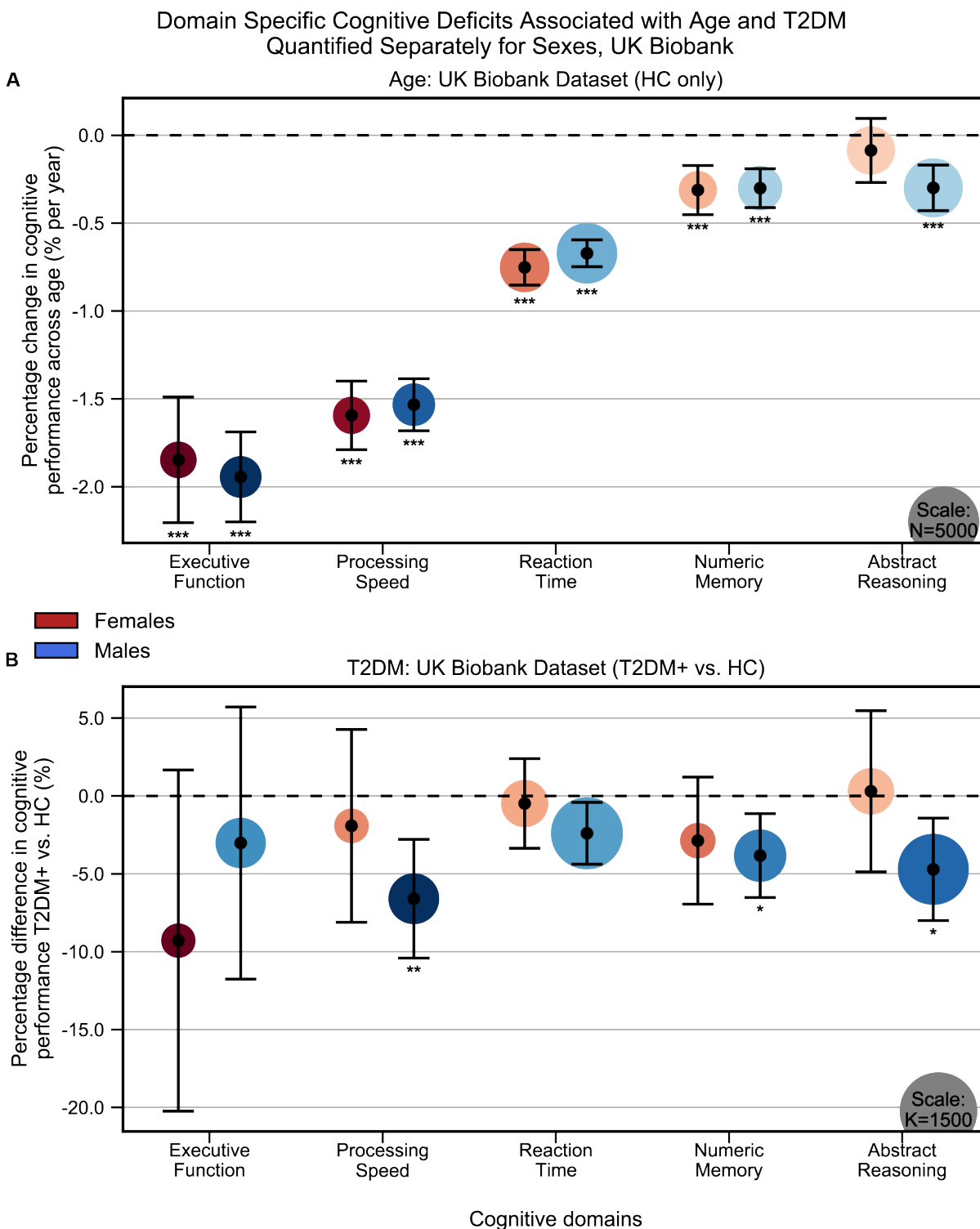
513 **Figure Supplements**



514

515 **Figure 1-figure supplement 1:** Cognitive differences associated with sex in the UK Biobank dataset across
516 the five cognitive domains. Samples were HC only and were matched for age, education, and hypertension.
517 Values on the y axis represent % difference in performance compared to the combined average (from both
518 F and M). A positive % represents better performance in males. Marker sizes represent sample sizes scaled
519 (per area) as indicated in the bottom right corner. Error bars are 95% CI. * $P \leq 0.05$; ** $P \leq 0.01$; *** $P \leq$
520 0.001, Bonferroni corrected.
521

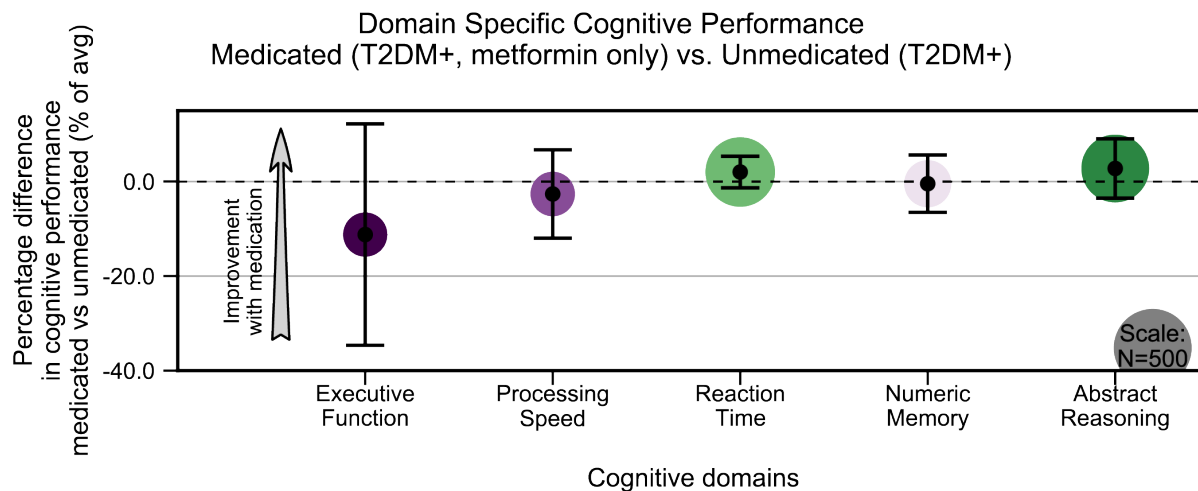
522



523
524 **Figure 1-figure supplement 2:** Cognitive differences associated with Age (A) and T2DM (B) in the UK
525 Biobank dataset across the five cognitive domains, analyzed separately within Males and Females.
526 Samples were matched for age, education, and hypertension. The associated effects were consistent across

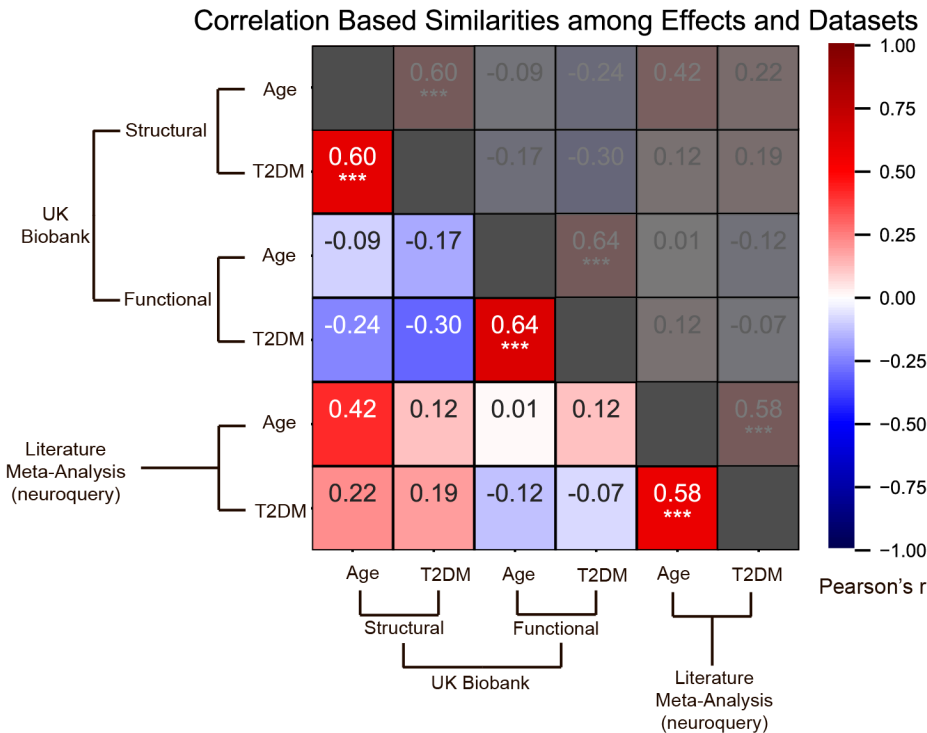
527 males vs females, but with respect to T2DM, effects were generally stronger in males. Note that sample
528 sizes were significantly larger for males compared to females. Marker sizes represent sample sizes scaled
529 (per area) as indicated in the bottom right corner of each panel. Error bars are 95% CI. * $P \leq 0.05$;
530 ** $P \leq 0.01$; *** $P \leq 0.001$, Bonferroni corrected.

531
532



533
534 **Figure 1-figure supplement 3:** Treatment of T2DM patients with metformin had no impact on cognitive
535 deficits. We evaluated the UK Biobank dataset to determine whether treatment with metformin would
536 prevent the development of cognitive deficits associated with T2DM. Among T2DM diagnosed subjects
537 only, we compared those subjects who reported using metformin but no other medications to those who
538 reported not taking any medications to treat T2DM. We matched subjects for age, sex, education and
539 T2DM disease duration, and controlled for BMI. No statistically significant ($\alpha=0.05$) differences in
540 cognitive performance were detected when comparing subjects on metformin to unmedicated subjects
541 (arrows indicate the direction of expected improvement by metformin). Underlying sample size
542 distributions can be found in **Appendix figure 7C**. Error bars are 95% CI.

543
544

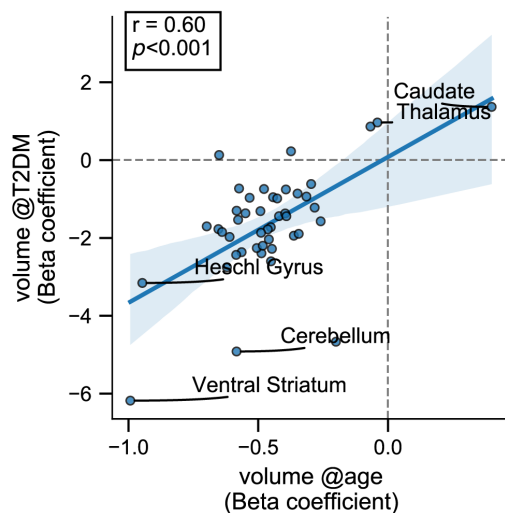


545
546
547
548
549
550
551
552
553
554
555
556
557
558
559
560
561
562
563

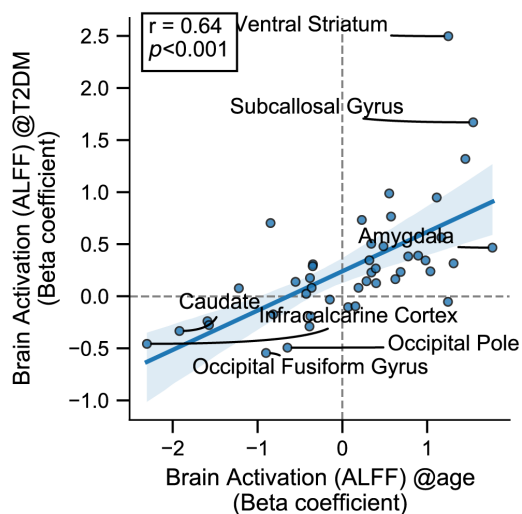
Figure 2-figure supplement 1: Effects of age and T2DM exhibited strong correlations within datasets and modalities. We considered six sets of changes we previously characterized in association with the following: 1. Age contrast, gray matter volume in UK Biobank; 2. T2DM contrast, gray matter volume in UK Biobank; 3. Age contrast, brain activation in UK Biobank; 4. T2DM contrast, brain activation in UK Biobank; 5. Age contrast, brain structure/activation (aggregate) from NeuroQuery; 6. T2DM contrast, brain structure/activation (aggregate) from NeuroQuery. Corresponding effects from region/domain specific analyses were considered as inputs for correlation measures, which were then determined for all combinations of the six sets of effects. Age and T2DM were significantly correlated (Pearson's r) within all modalities, suggesting common trajectories between age and T2DM related effects. No other significant correlations were observed, however, between datasets or modalities. Given that structural and functional effects appeared to be unrelated within UK Biobank, and that the NeuroQuery results were a combination of both structural and functional results, we did not expect significant associations between modality-specific UK Biobank results and multimodal (structural and functional) NeuroQuery results. However, it is important to note that very different ways of acquiring and analyzing brain data independently replicate the correlations between age and T2DM related effects, suggesting that the association is highly robust. See relevant scatterplots in **Figure 2-figure supplement 2**. * $P \leq 0.05$; ** $P \leq 0.01$; *** $P \leq 0.001$, Bonferroni corrected.

Correlation Based Similarities between Effects Associated with

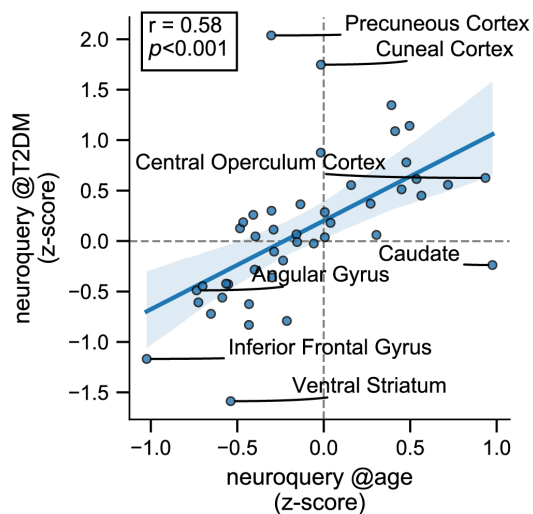
A Age and T2DM, UK Biobank Dataset



B



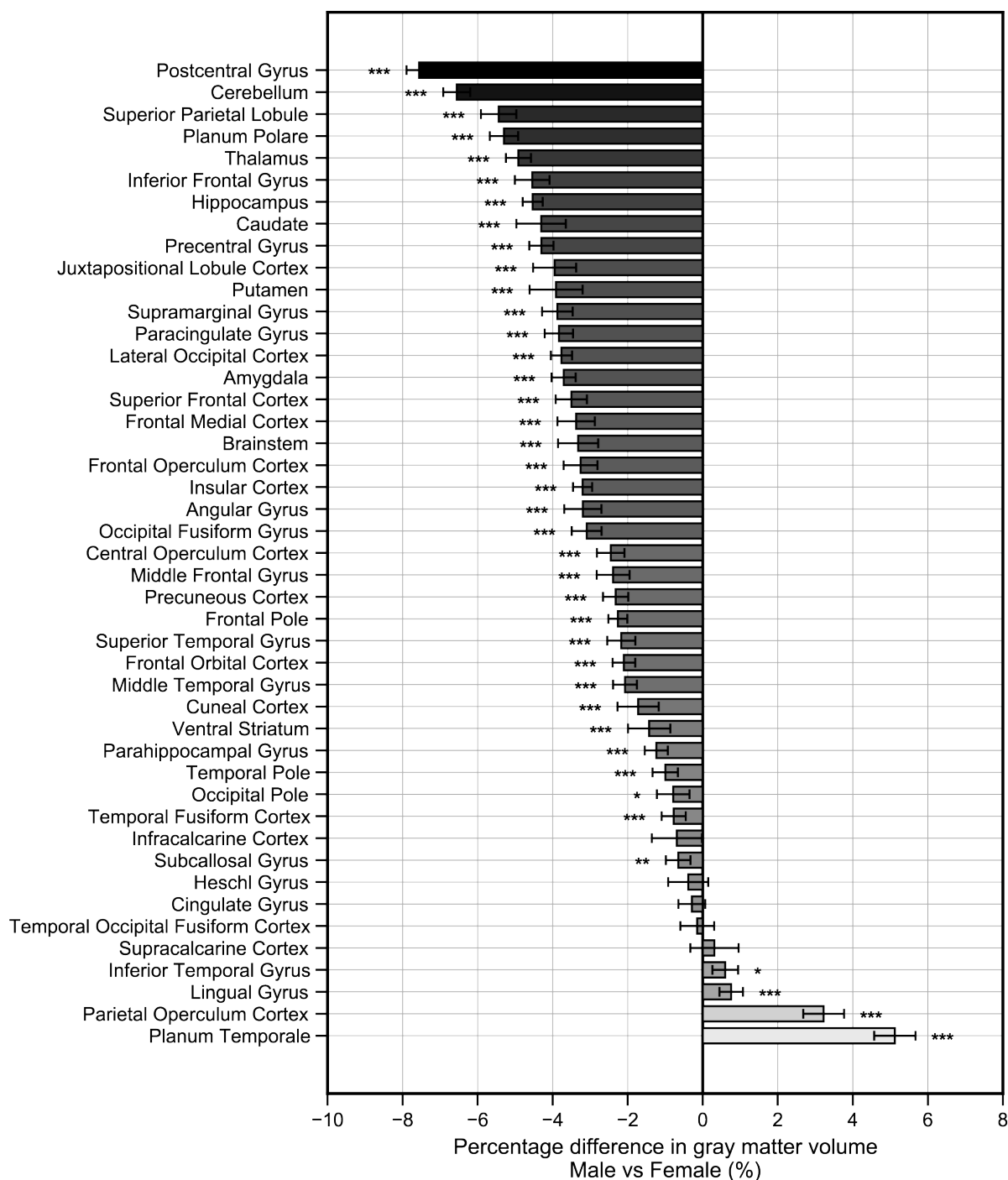
C



565 **Figure 2-figure supplement 2:** Scatterplots corresponding to the statistically significant cells in **Figure 2-**
566 **figure supplement 1.** Statistics shown are Pearson's correlations. Regions on the extremes are labeled. **A:**
567 Gray matter volume results, **B:** Brain activation (ALFF) results, **C:** Neuroquery-based meta-analysis
568 results.
569

570

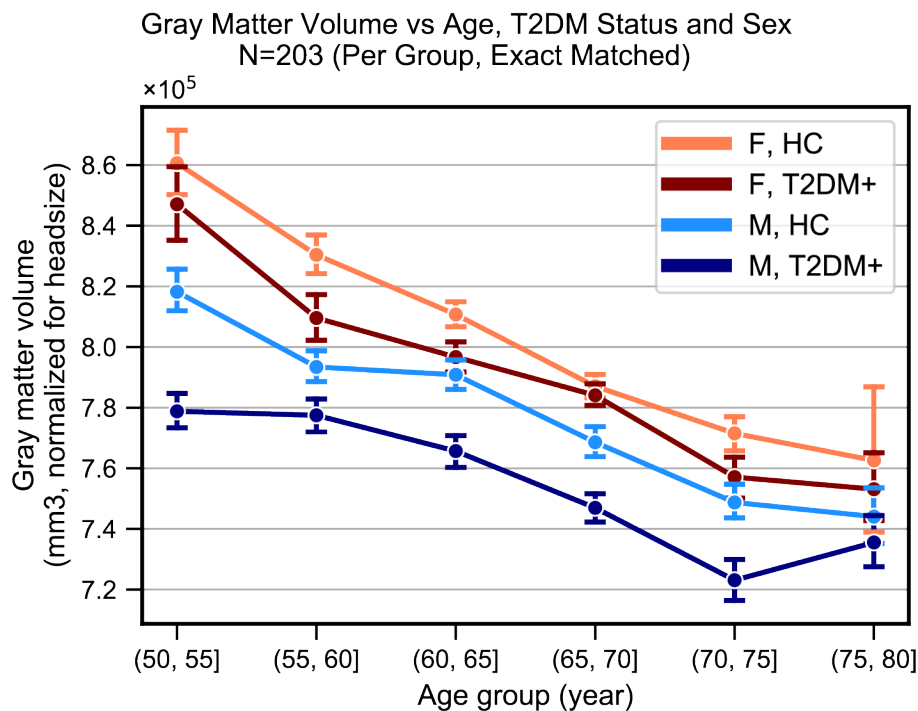
Region Specific Gray Matter Volume Differences Associated with Sex,
 HC only ($N_{Male}=6,466$, $N_{Female}=6,466$), UK Biobank Dataset



571
 572 **Figure 2-figure supplement 3:** Gray matter volume (normalized for head size) differences associated
 573 with sex in the UK Biobank dataset across the 45 anatomical regions. Samples were HC only and were
 574 matched for age, education, and hypertension. Values on the x axis represent % difference in volume

575 compared to the combined average (from both F and M). A negative % represents larger volume in
576 females. Error bars are 95% CI. * $P \leq 0.05$; ** $P \leq 0.01$; *** $P \leq 0.001$, Bonferroni corrected.
577

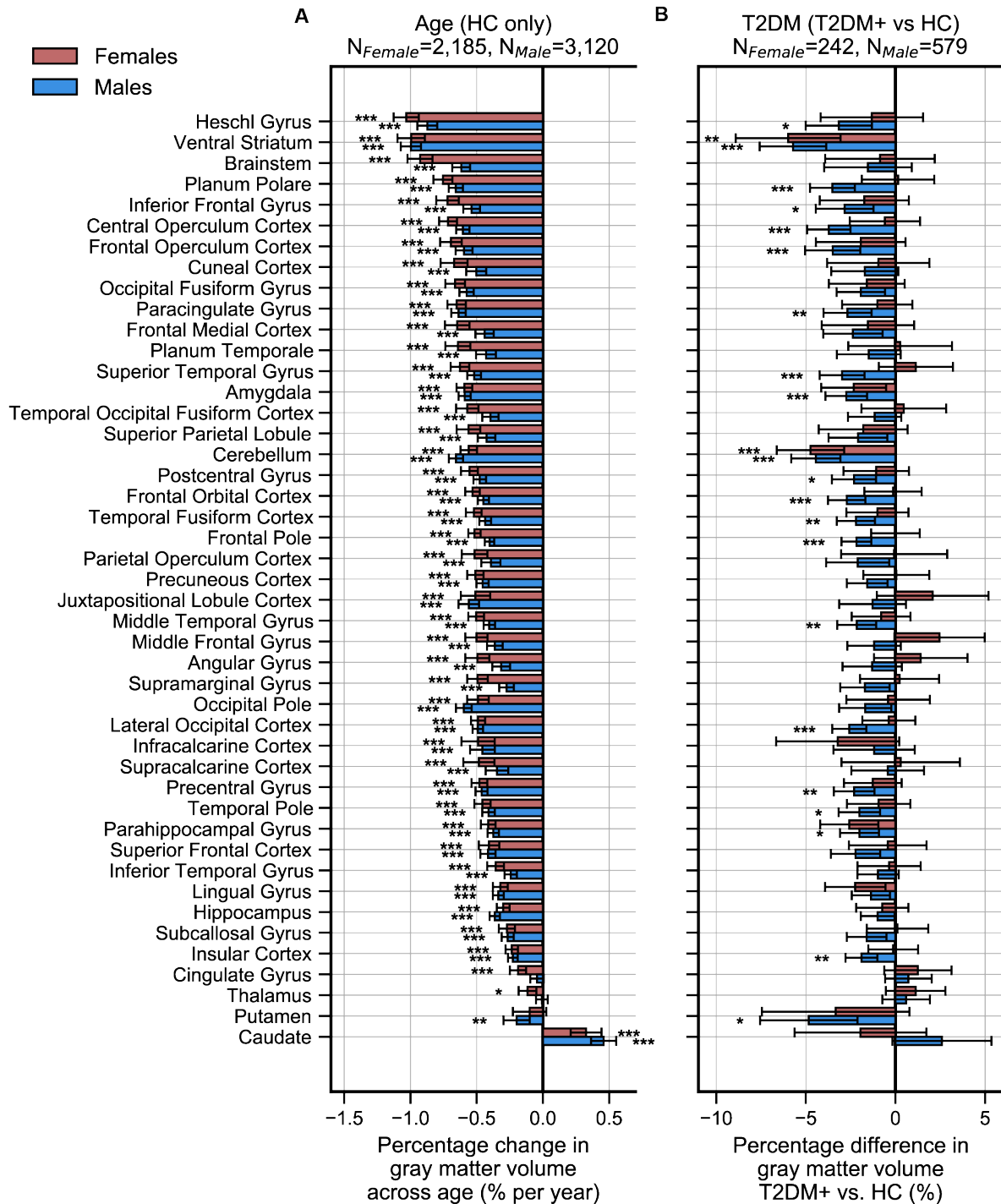
578
579



580
581 **Figure 2-figure supplement 4:** Plots representing trends in total gray matter volume (normalized for head
582 size) across Age, Sex and T2DM. Samples were matched for age, education, and hypertension. The age-
583 related decline appeared equivalent in the two sexes but T2DM associated deficits were stronger in males.
584 With respect to disease duration (not shown), equivalent effects were observed magnitude-wise in males
585 ($24\% \pm 17\%$) and females ($27\% \pm 32\%$), but these results were only significant in the male-only group
586 ($p=0.002$), for which sample sizes were considerably larger ($N_M=366$, $N_F=104$).
587

588

Region Specific Gray Matter Volume Changes Associated with Age and T2DM, Quantified Separately for Sexes, UK Biobank

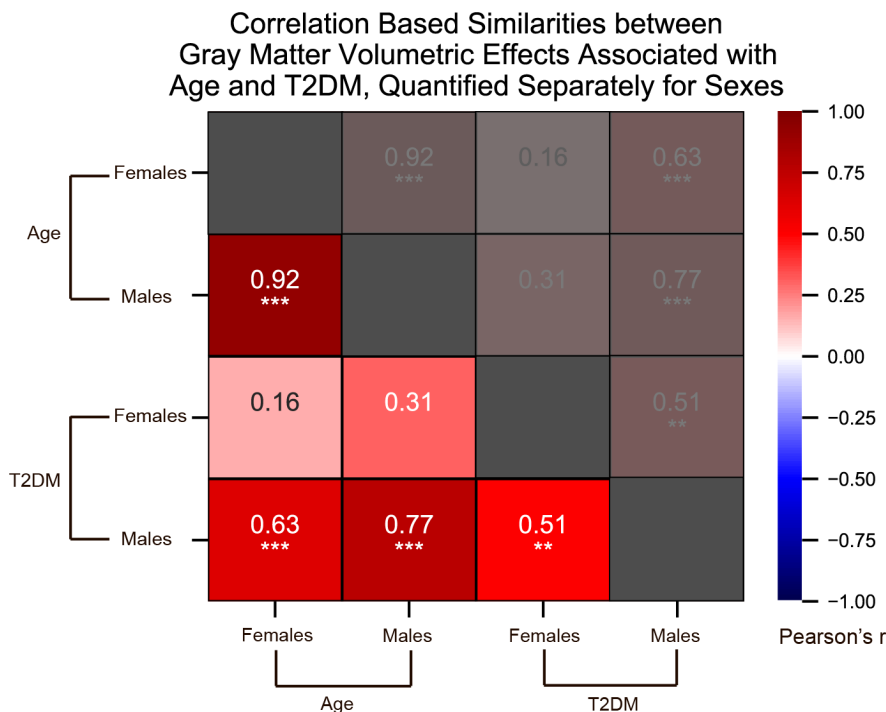


589
 590
 591
 592
 593

Figure 2-figure supplement 5: Region-specific gray matter volume deficits associated with Age (A) and T2DM (B) in the UK Biobank dataset, analyzed separately within females and males. Samples were matched for age, education, and hypertension. The associated effects were correlated across males vs females (see **Figure 2-figure supplements 6, 7A, 7B**), With respect to T2DM, effects were generally

594 stronger in males. Age and T2DM effects significantly correlated in males but not in females (see **Figure**
595 **2-figure supplements 6, 7C, 7D**). Note that sample sizes were significantly larger for males compared to
596 females. Error bars are 95% CI. * $P \leq 0.05$; ** $P \leq 0.01$; *** $P \leq 0.001$, Bonferroni corrected.
597

598

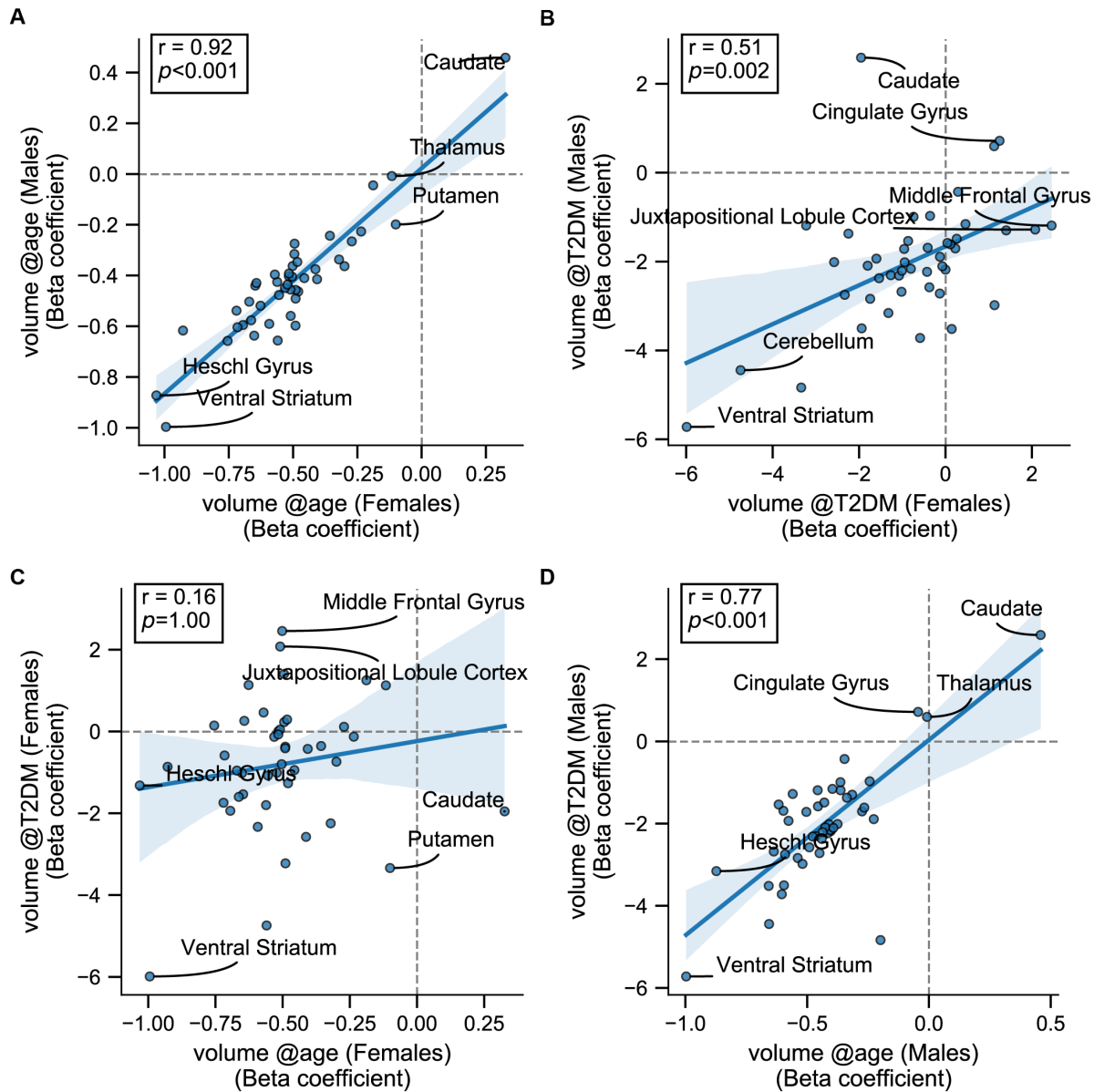


599
600
601
602
603
604

Figure 2-figure supplement 6: We quantified correlations (Pearson's r) among the region-specific gray matter volume deficits associated with Age and T2DM, which we quantified in the UK Biobank dataset separately for females and males. See relevant scatterplots in **Figure 2-figure supplement 7**. $*P \leq 0.05$; $**P \leq 0.01$; $***P \leq 0.001$, Bonferroni corrected.

605

Correlations between Gray Matter Volumetric Effects Associated with Age and T2DM, Quantified Separately for Sexes, UK Biobank Dataset

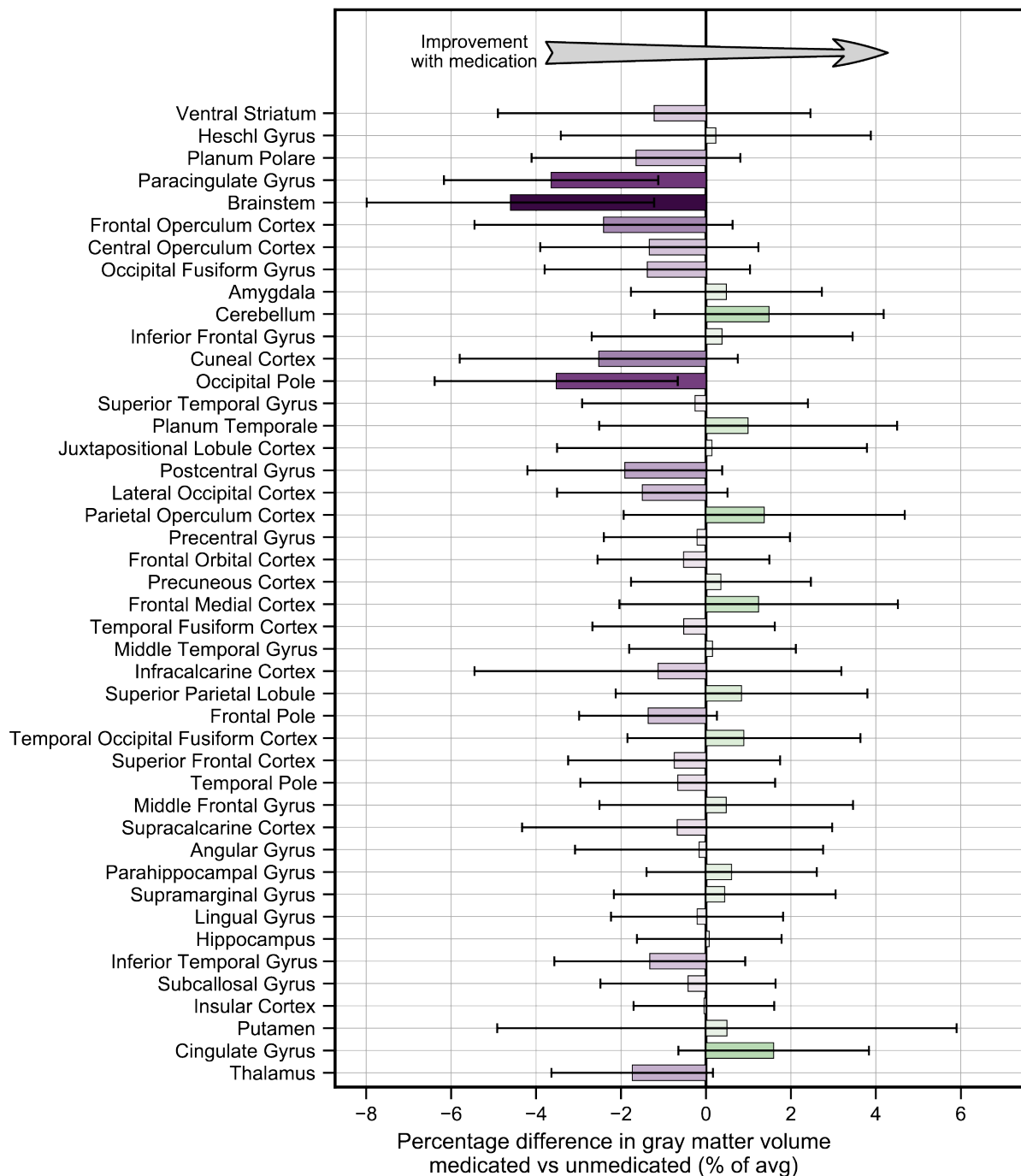


606
607
608
609
610
611
612

Figure 2-figure supplement 7: Scatterplots corresponding to the most relevant cells in **Figure 2-figure supplement 6**. Statistics shown are Pearson's correlations. Regions on the extremes are labeled. All panels contain gray matter volume related effects only. **A:** Age-related effects in males vs females, **B:** T2DM-related effects in males vs females, **C:** Age vs T2DM effects in females only, **D:** Age vs T2DM effects in males only.

613

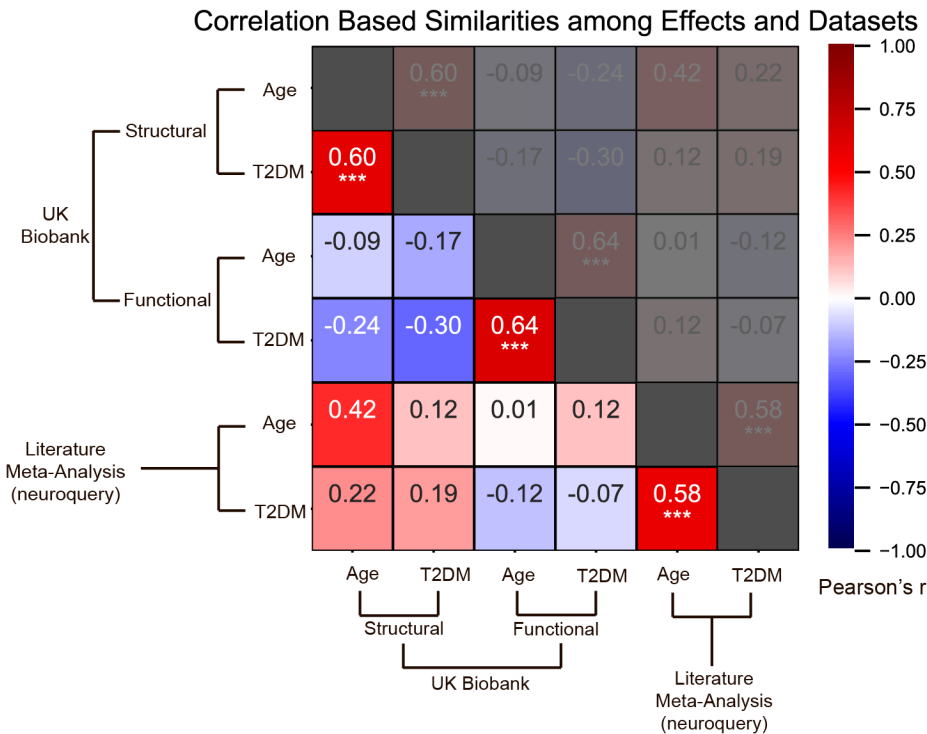
Region Specific Gray Matter Volume
 Medicated (T2DM+, metformin only) vs. Unmedicated (T2DM+)
 $N_{metf+} = 168, N_{metf-} = 168$



614
 615 **Figure 2-figure supplement 8:** Treatment of T2DM patients with metformin had no impact on gray matter
 616 atrophy. We evaluated the UK Biobank dataset to determine whether treatment with metformin would
 617 prevent gray matter atrophy associated with T2DM. Among T2DM diagnosed subjects only, we compared
 618 those subjects who reported using metformin but no other medications to those who reported not taking any

619 medications to treat T2DM. We matched subjects for age, sex, education and T2DM disease duration, and
620 controlled for BMI. Our analysis of gray matter atrophy did not detect significant ($\alpha=0.05$) improvement
621 with metformin treatment (the direction of expected improvement by metformin is indicated by an arrow).
622 Underlying sample size distributions can be found in **Appendix figure 7A**. Error bars are 95% CI.
623

624



625

626

627

628

629

630

631

632

633

634

635

636

637

638

639

640

641

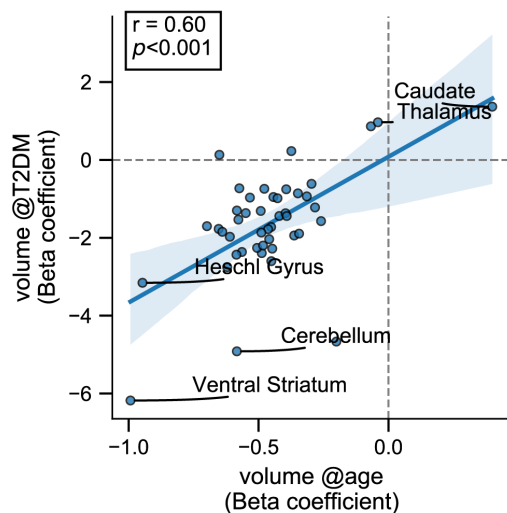
642

643

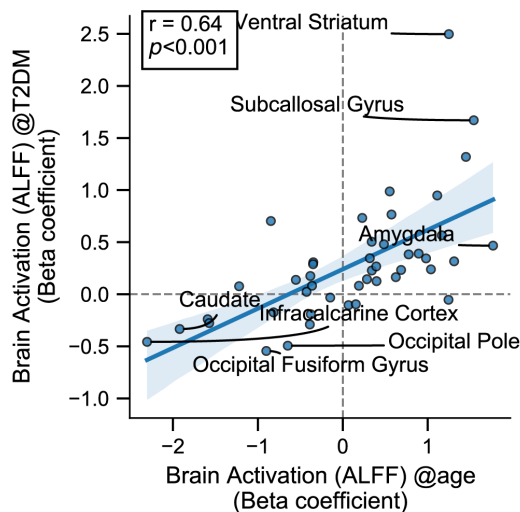
Figure 3-figure supplement 1: Effects of age and T2DM exhibited strong correlations within datasets and modalities. We considered six sets of changes we previously characterized in association with the following: 1. Age contrast, gray matter volume in UK Biobank; 2. T2DM contrast, gray matter volume in UK Biobank; 3. Age contrast, brain activation in UK Biobank; 4. T2DM contrast, brain activation in UK Biobank; 5. Age contrast, brain structure/activation (aggregate) from NeuroQuery; 6. T2DM contrast, brain structure/activation (aggregate) from NeuroQuery. Corresponding effects from region/domain specific analyses were considered as inputs for correlation measures, which were then determined for all combinations of the six sets of effects. Age and T2DM were significantly correlated (Pearson's *r*) within all modalities, suggesting common trajectories between age and T2DM related effects. No other significant correlations were observed, however, between datasets or modalities. Given that structural and functional effects appeared to be unrelated within UK Biobank, and that the NeuroQuery results were a combination of both structural and functional results, we did not expect significant associations between modality-specific UK Biobank results and multimodal (structural and functional) NeuroQuery results. However, it is important to note that very different ways of acquiring and analyzing brain data independently replicate the correlations between age and T2DM related effects, suggesting that the association is highly robust. See relevant scatterplots in **Figure 3-figure supplement 2**. * $P \leq 0.05$; ** $P \leq 0.01$; *** $P \leq 0.001$, Bonferroni corrected.

Correlation Based Similarities between Effects Associated with

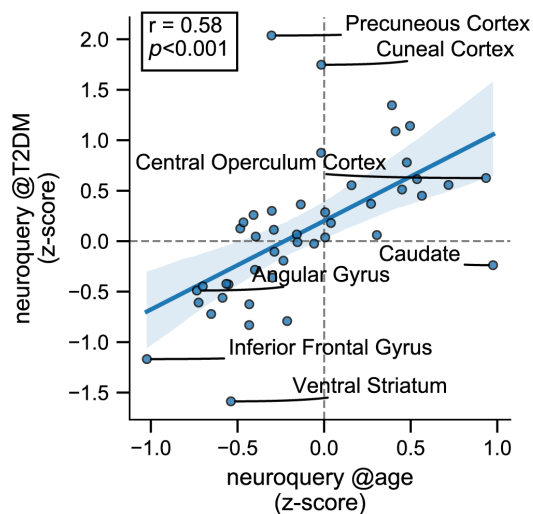
A Age and T2DM, UK Biobank Dataset



B

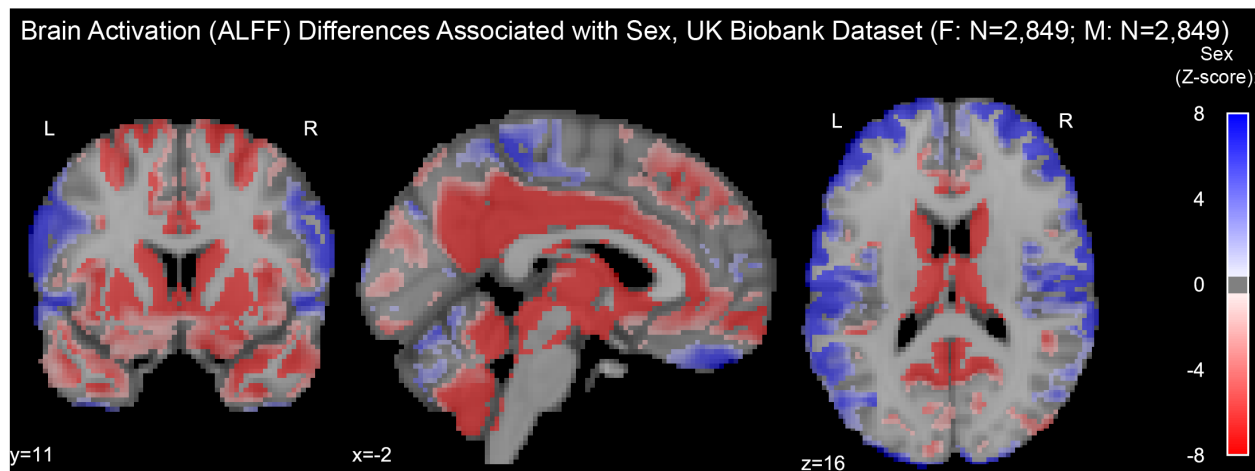


C



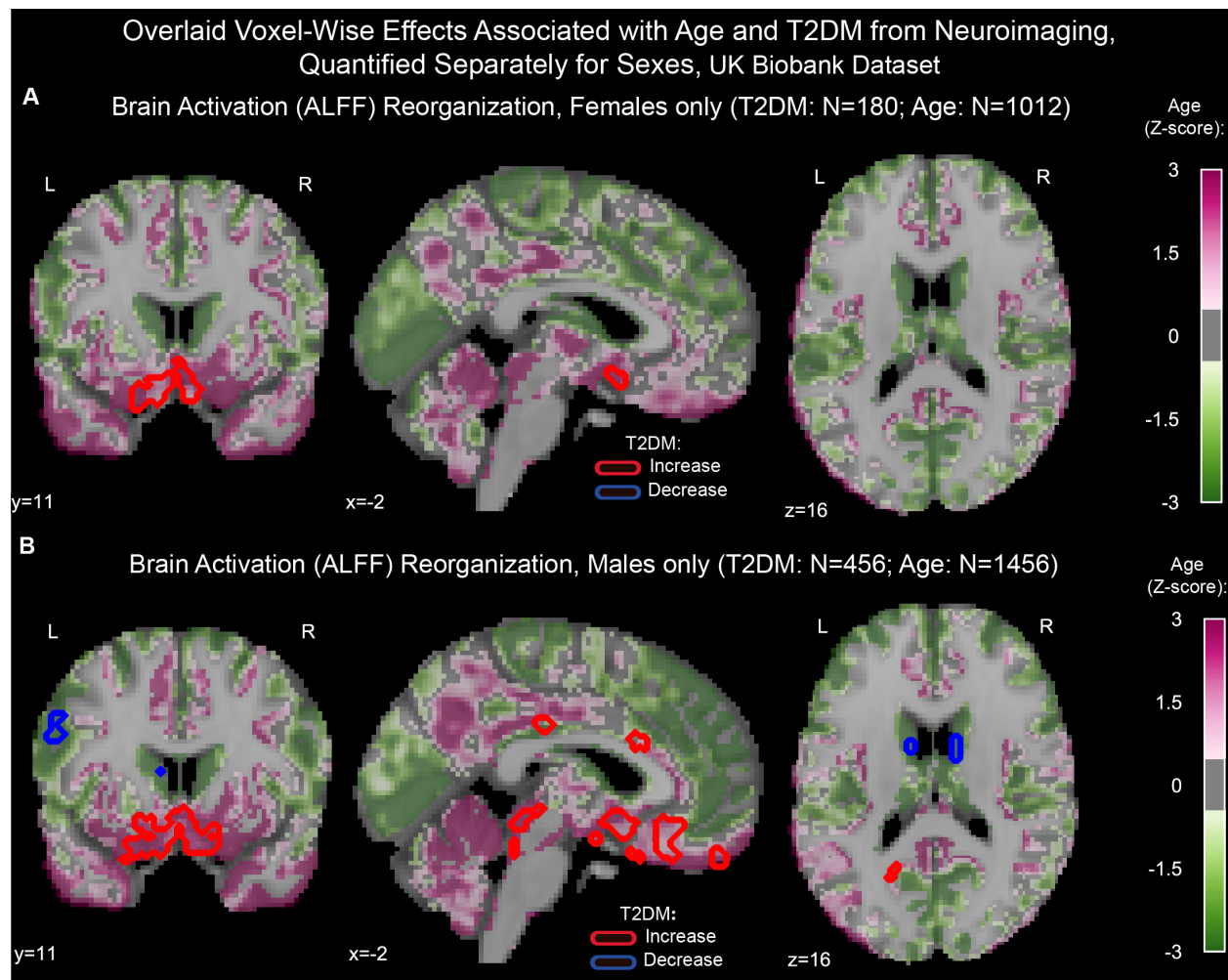
645 **Figure 3-figure supplement 2:** Scatterplots corresponding to the statistically significant cells in **Figure 3-**
646 **figure supplement 1.** Statistics shown are Pearson's correlations. Regions on the extremes are labeled. **A:**
647 Gray matter volume results, **B:** Brain activation (ALFF) results, **C:** Neuroquery-based meta-analysis
648 results.
649

650



651
652 **Figure 3-figure supplement 3:** Resting-state brain activation (ALFF) differences associated with sex in
653 the UK Biobank dataset. Samples were HC only and were matched for age, education, and hypertension.
654 Only significantly different voxels are shown following false discovery rate correction ($p < 0.05$). Positive
655 (labeled with blue) voxels represent stronger activation in males compared to females.
656

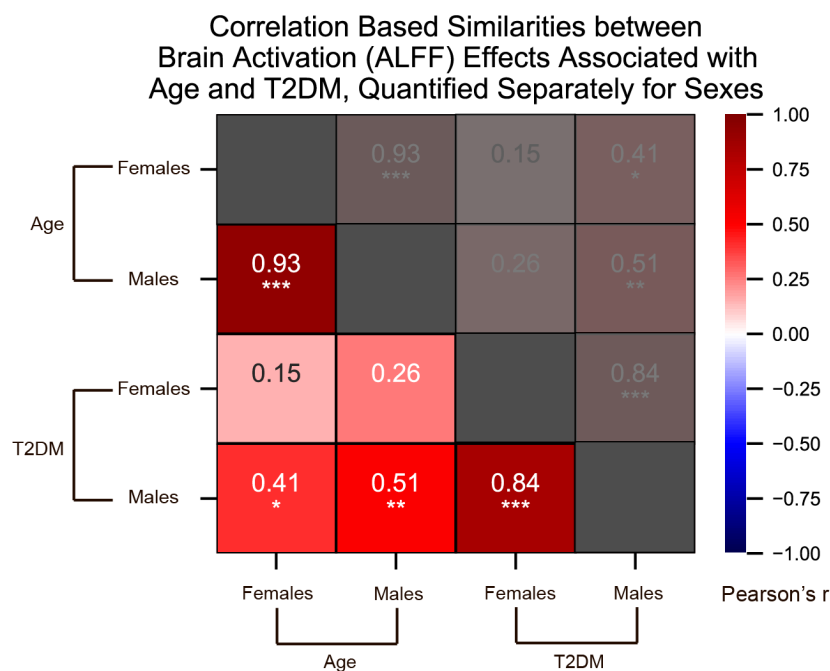
657
658



659
660
661
662
663
664
665
666
667
668
669
670
671

Figure 3-figure supplement 4: Age and T2DM associated reorganization patterns in brain activation (ALFF) were overlaid separately for females (**A**) and males (**B**). Samples were matched for age, education, and hypertension. Effects linked to age are shown in the form of an unthresholded z-map represented by the pink-green color gradient, with pink indicating increased activation and green showing decreased. T2DM related effects were thresholded (minimum cluster size $\sim 100\text{mm}^3$, FDR $p < 0.05$) to result in significant clusters. The outlines of these significant clusters are overlaid on the age-related z-map to demonstrate overlapping effects. As also seen with gray matter volume, the associated effects were correlated across males vs females (see **Figure 3-figure supplements 5, 6A, 6B**). With respect to T2DM, effects were generally stronger in males. Age and T2DM effects significantly correlated in males but not in females (see **Figure 3-figure supplements 5, 6C, 6D**). Note that sample sizes were significantly larger for males compared to females.

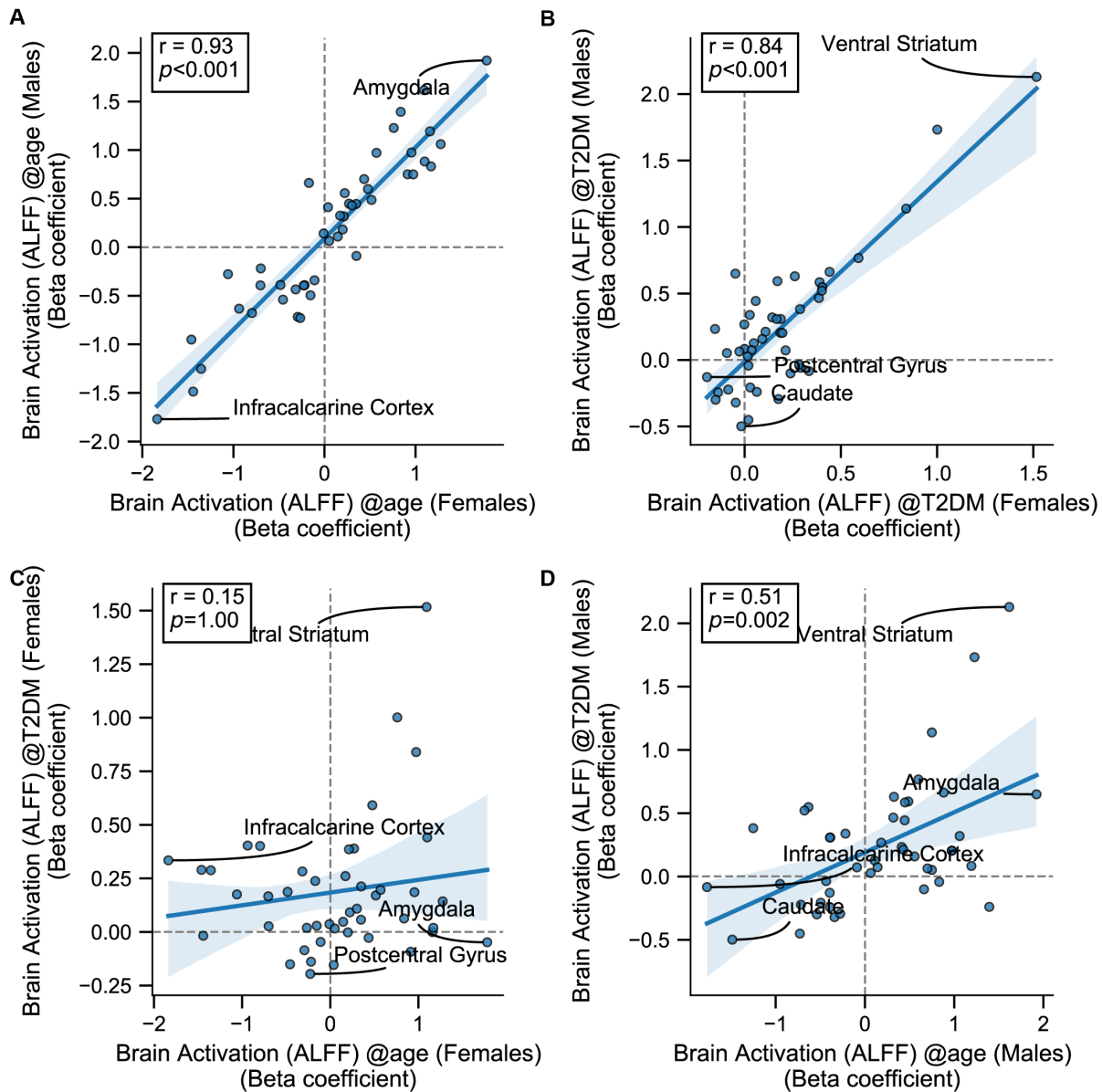
672



673
674 **Figure 3-figure supplement 5:** We quantified correlations (Pearson's r) among the region-specific changes
675 in brain activation (ALFF) patterns associated with Age and T2DM, which we quantified in the UK Biobank
676 dataset separately for females and males. See relevant scatter plots in **Figure 3-figure supplement 6.**
677 * $P \leq 0.05$; ** $P \leq 0.01$; *** $P \leq 0.001$, Bonferroni corrected.
678

679

Correlations between Brain Activation (ALFF) Effects Associated with Age and T2DM, Quantified Separately for Sexes, UK Biobank Dataset



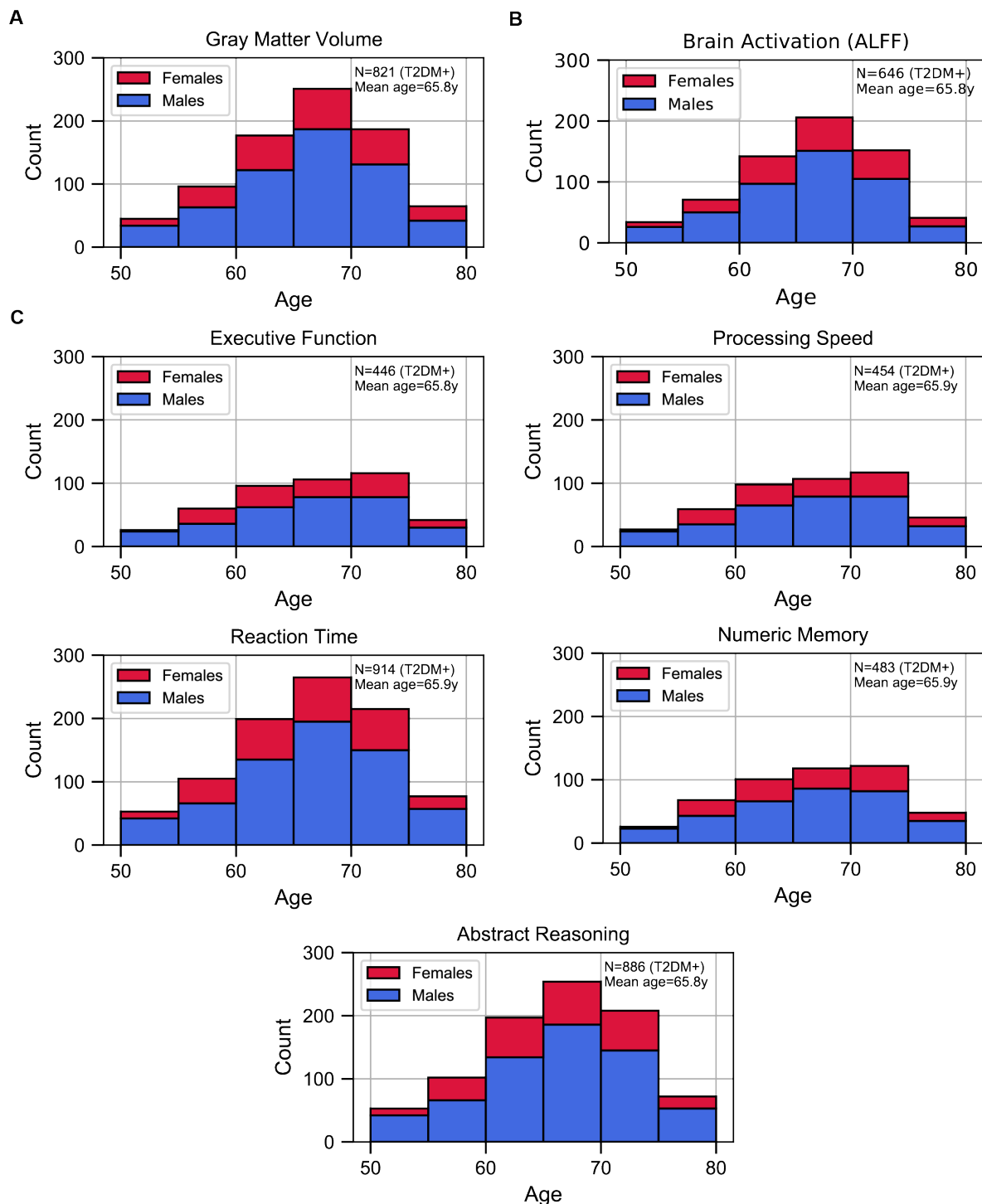
680
681
682
683
684
685
686

Figure 3-figure supplement 6: Scatterplots corresponding to the primary cells in **Figure 3-figure supplement 5**. Statistics shown are Pearson's correlations. Regions on the extremes are labeled. All panels contain brain activation (ALFF) effects only. **A:** Age-related effects in males vs females, **B:** T2DM-related effects in males vs females, **C:** Age vs T2DM effects in females only, **D:** Age vs T2DM effects in males only.

687

688 **Appendix Figures**

Sample Sizes for T2DM+ vs HC Analyses from UK Biobank,
T2DM+ Only, to be Exact Matched with HC



689

690

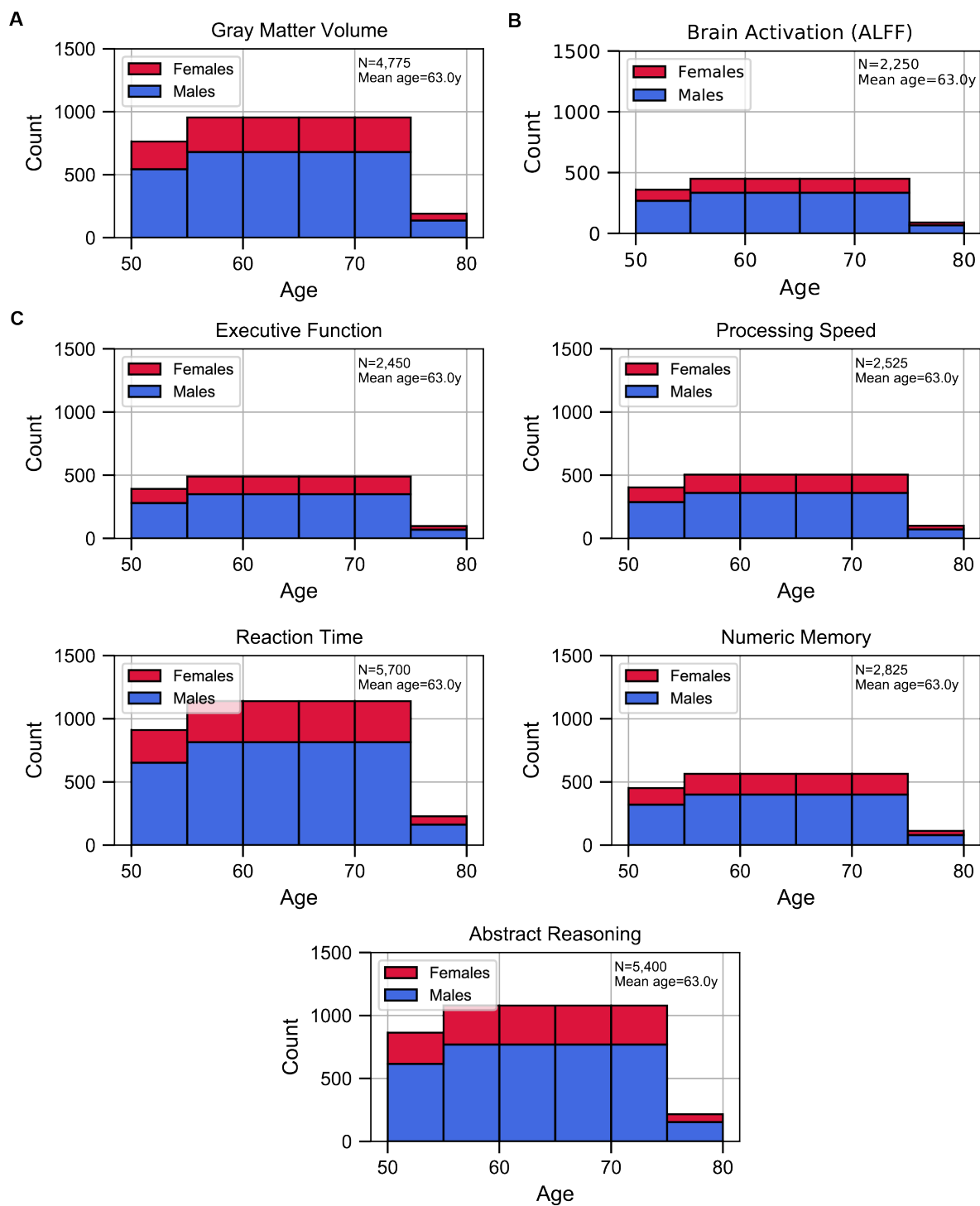
691 **Appendix figure 1:** Sample size distributions in T2DM vs HC analyses. The values shown represent

T2DM+ only, T2DM+ were matched with an equivalent number of HCs, resulting in twice the number of

692 samples in every analysis. The bars are stacked. **A:** Gray matter volume analyses **B:** Brain activation
693 (ALFF) analyses **C:** Cognition analyses (5 domains).

694
695

Sample Sizes for Age-Related Analyses from UK Biobank, HC Only, Matched Samples



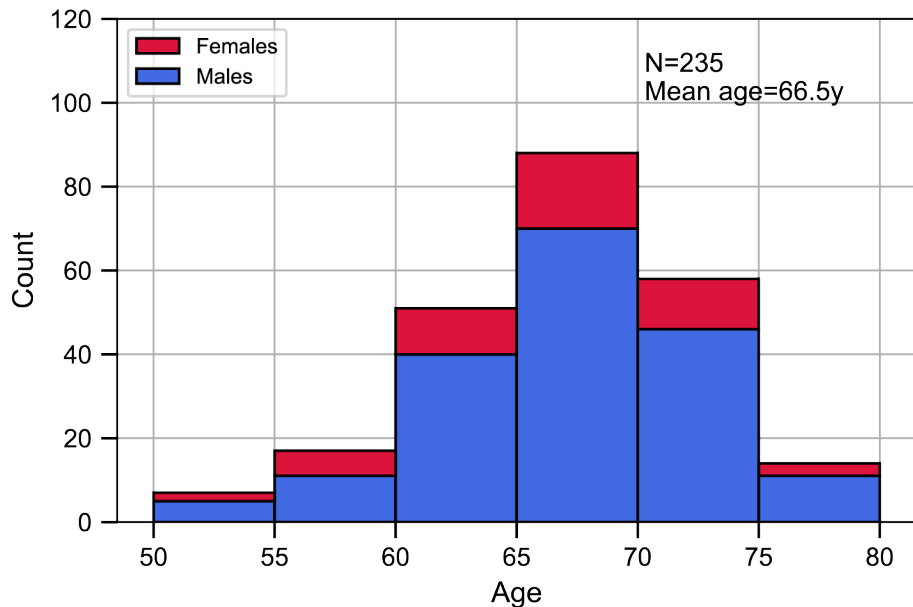
696
697
698

Appendix figure 2: Sample size distributions of the analyses which investigated Age as the factor of interest. Samples included HC only and were matched for sex, education, and hypertension across age.

699 The matching method resulted in “sample chains” across age: within each chain, samples were equivalent
700 in terms of sex, education, and hypertension. The bars are stacked. **A:** Gray matter volume analyses **B:**
701 Brain activation (ALFF) analyses **C:** Cognition analyses (5 domains).

702
703

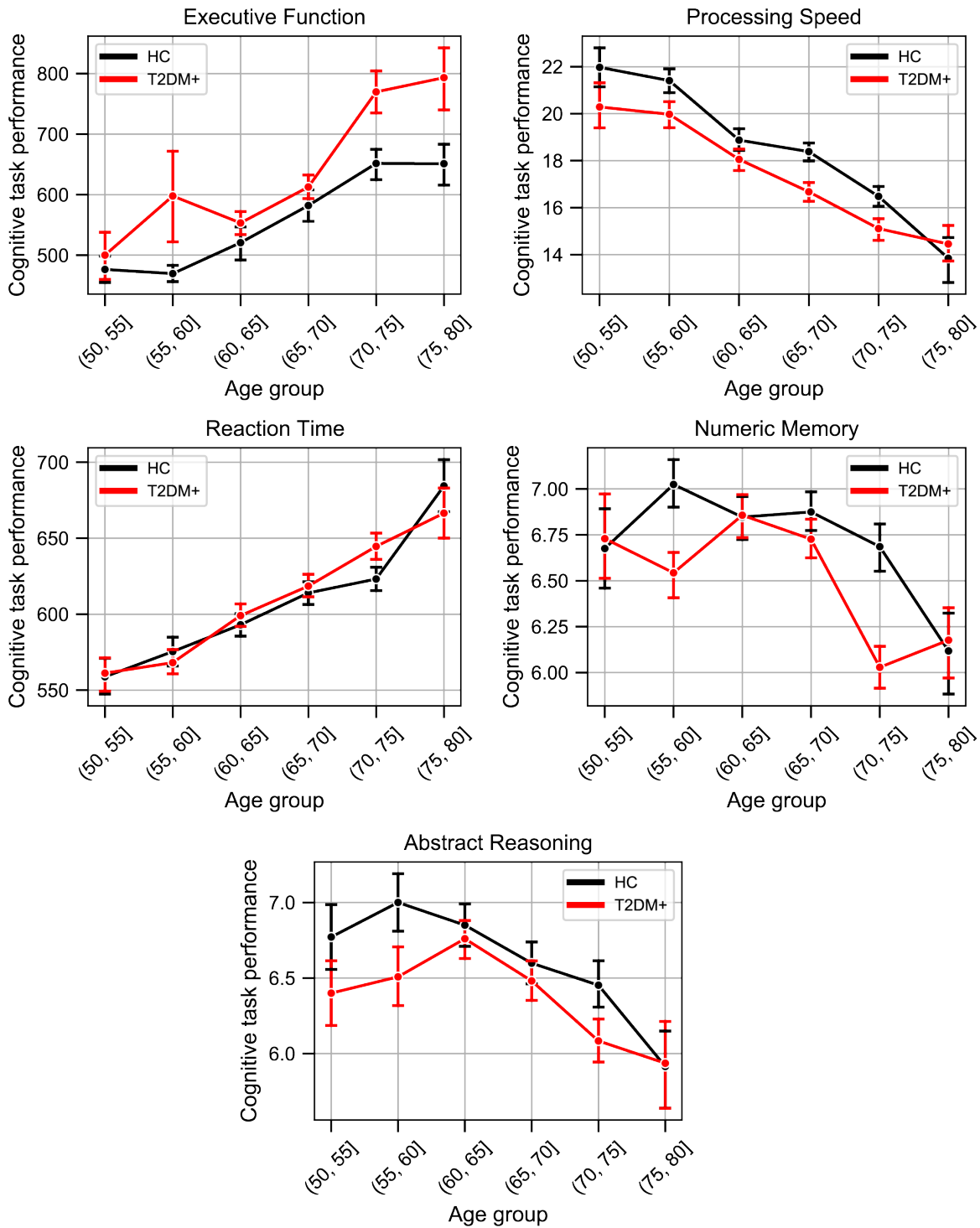
Sample Sizes for the Analysis of Gray Matter Volume with Respect to T2DM Duration, UK Biobank Dataset



704
705 **Appendix figure 3:** Sample size distribution in the analysis which investigated T2DM duration as the main
706 factor. The values shown represent one out of the three duration groups (HC, T2DM+ for 0-9y, and T2DM+
707 for 10+y). Samples across the three duration groups were matched for age, sex, education, and hypertension.
708 Given the three groups, the total sample size was three times what is shown here. The statistical analysis
709 included T2DM+ samples only (for which duration was defined), HC were included for visual
710 representation only. The bars are stacked.
711

712

Cognitive Performance Trends across Age and T2DM Status, UK Biobank Dataset



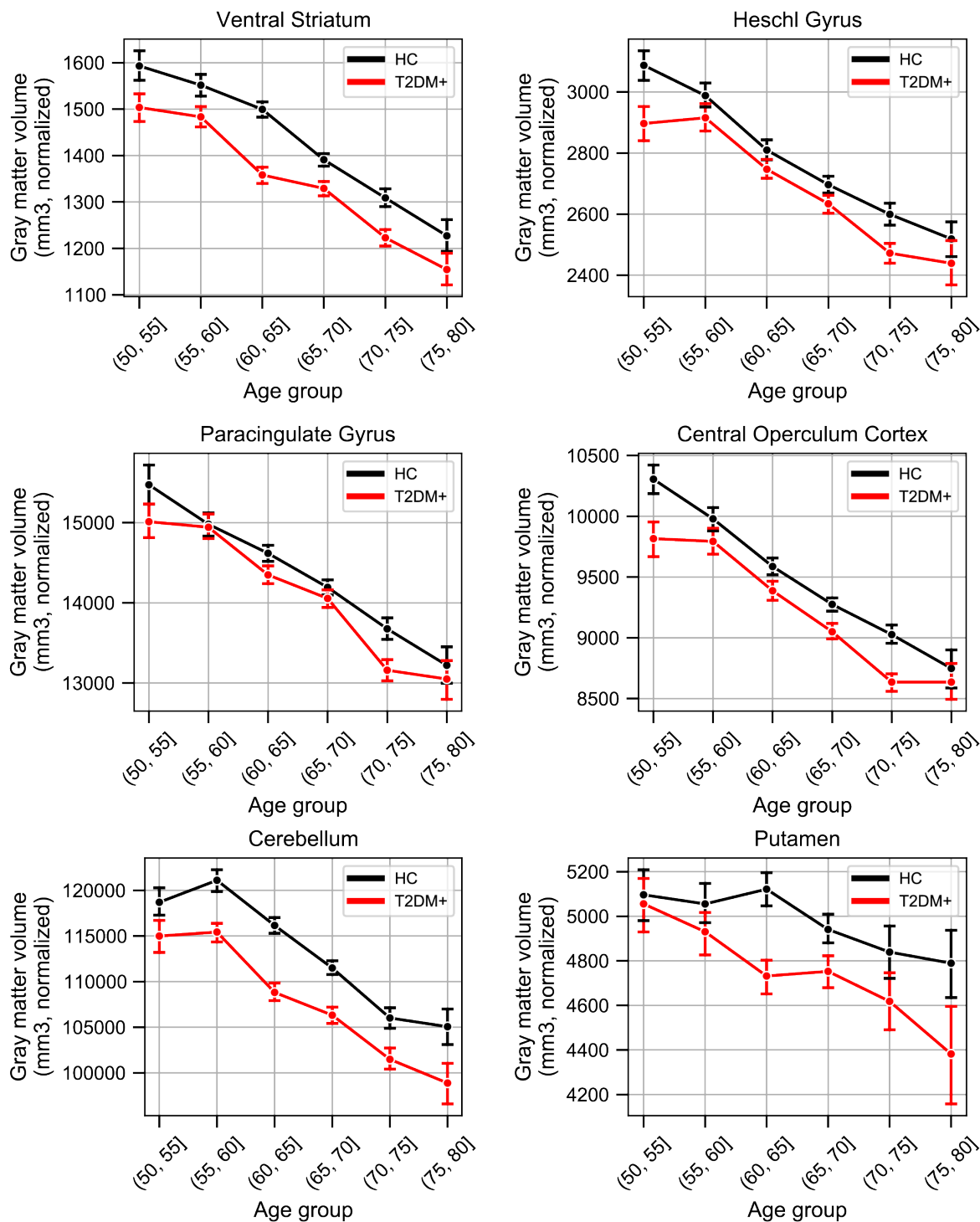
713
714
715
716

Appendix figure 4: Plots representing trends across Age and T2DM for each of the five investigated cognitive domains. For *executive function* and *reaction time*, lower scores represented better performance. The linear trends across age were robust and justified modeling age as a linear factor. The apparent deviation

717 from linear trends in the youngest and oldest age groups are explained by markedly smaller sample sizes in
718 those age groups (see underlying sample sizes in **Appendix figure 1C**).
719

720

Gray Matter Volume Trends across Age and T2DM Status, UK Biobank Dataset



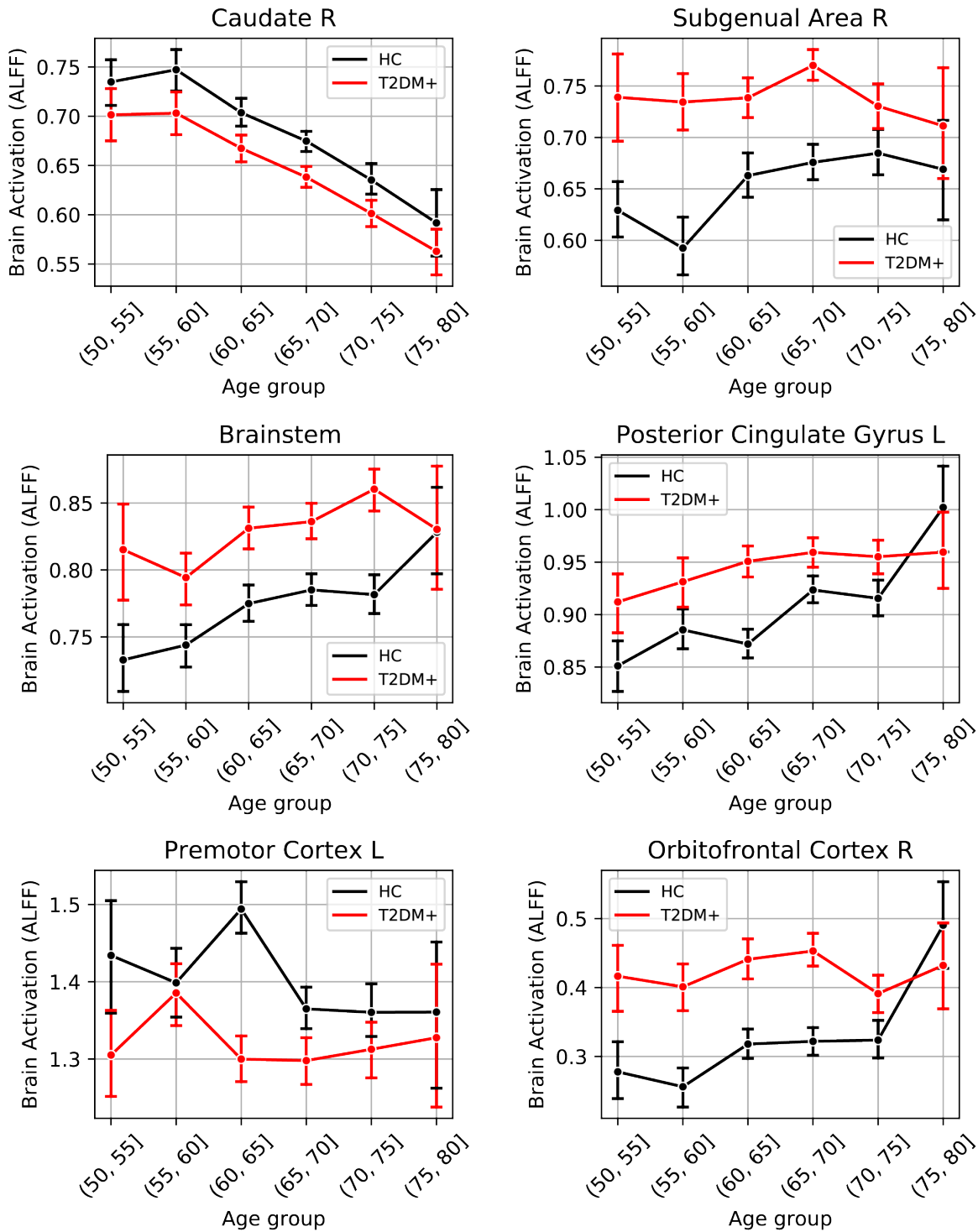
721
722
723
724

Appendix figure 5: Plots representing trends across Age and T2DM for six regions which exhibited the strongest trends in gray matter volume changes. The linear trends across age were robust and justified modeling age as a linear factor. The apparent deviation from linear trends in the youngest and oldest age

725 groups are explained by markedly smaller sample sizes in those age groups (see underlying sample sizes
726 in **Appendix figure 1A**).

727
728

Brain Activation (ALFF) Reorganization Trends across Age and T2DM Status, UK Biobank Dataset



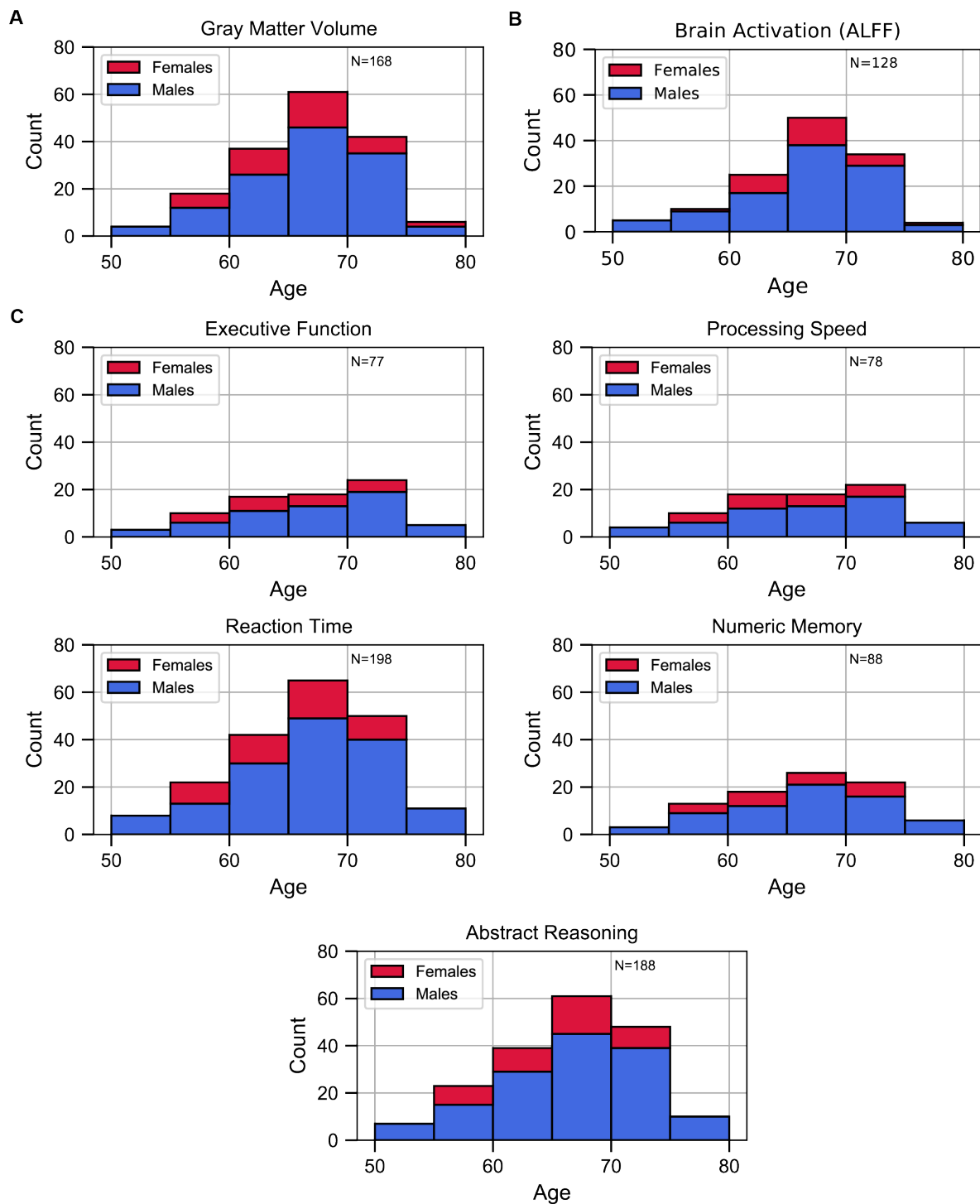
729
730
731
732

Appendix figure 6: Lineplots representing trends across Age and T2DM for six regions which exhibited the strongest trends in brain activation (ALFF). The linear trends across age were robust and justified modeling age as a linear factor. The apparent deviation from linear trends in the youngest and oldest age

733 groups are explained by markedly smaller sample sizes in those age groups (see underlying sample sizes
734 in **Appendix figure 1B**).

735
736
737

Sample Sizes for Metformin-Related Analyses from UK Biobank,
Medicated Only, to be Matched with Unmedicated



738
739
740

Appendix figure 7: Sample size distributions in metformin medication status related analyses. The values shown represent metformin medicated T2DM+ only, these samples were matched with an equivalent

741 number of unmedicated T2DM+ samples, resulting in twice the number of samples in every analysis.
742 Samples were matched for age, sex, education, and hypertension. The bars are stacked. **A:** Gray matter
743 volume analyses **B:** Brain activation analyses **C:** Cognition analyses (5 domains).
744
745
746

747 **Supplementary File Legends**

748

749 **Supplementary File 1:** Summary of all relevant UK Biobank data-fields.

750

751 **Supplementary File 2:** List and justification for studies excluded from our cognitive meta-analysis.

752

753 **Supplementary File 3:** Characteristics of patients who underwent cognitive testing in studies included in
754 our meta-analysis.

755

756 **Supplementary File 4:** Summary of cognitive functions assessed, with corresponding instruments.

757

758 **Supplementary File 5:** Studies identified as most relevant for each key word by NeuroQuery algorithm.

759

760 **Supplementary File 6:** Study estimates of cognitive meta-analysis.

761

762 References

- 763 1. Kaiser AB, Zhang N, Der Pluijm WV. Global Prevalence of Type 2 Diabetes over the Next Ten
764 Years (2018-2028). *Diabetes*. 2018;67(Supplement 1):202-LB. doi:10.2337/db18-202-LB
- 765 2. Moheet A, Mangia S, Seaquist ER. Impact of diabetes on cognitive function and brain structure.
766 *Ann N Y Acad Sci*. Sep 2015;1353:60-71. doi:10.1111/nyas.12807
- 767 3. Callisaya ML, Beare R, Moran C, Phan T, Wang W, Srikanth VK. Type 2 diabetes mellitus, brain
768 atrophy and cognitive decline in older people: a longitudinal study. *Diabetologia*. 2019/03/01
769 2019;62(3):448-458. doi:10.1007/s00125-018-4778-9
- 770 4. Gold SM, Dziobek I, Sweat V, et al. Hippocampal damage and memory impairments as possible
771 early brain complications of type 2 diabetes. *Diabetologia*. Apr 2007;50(4):711-9. doi:10.1007/s00125-
772 007-0602-7
- 773 5. Mankovsky B, Zherdova N, Van den berg E, Biessels G, de Bresser J. Cognitive functioning and
774 structural brain abnormalities in people with Type 2 diabetes mellitus. *Diabetic Medicine*. 09/01
775 2018;35doi:10.1111/dme.13800
- 776 6. Manschot SM, Brands AM, van der Grond J, et al. Brain magnetic resonance imaging correlates of
777 impaired cognition in patients with type 2 diabetes. *Diabetes*. Apr 2006;55(4):1106-13.
778 doi:10.2337/diabetes.55.04.06.db05-1323
- 779 7. Rawlings AM, Sharrett AR, Schneider AL, et al. Diabetes in midlife and cognitive change over 20
780 years: a cohort study. *Ann Intern Med*. Dec 2 2014;161(11):785-93. doi:10.7326/m14-0737
- 781 8. Zilliox LA, Chadrasekaran K, Kwan JY, Russell JW. Diabetes and Cognitive Impairment. *Current*
782 *diabetes reports*. Sep 2016;16(9):87. doi:10.1007/s11892-016-0775-x
- 783 9. Pelimanni E, Jehkonen M. Type 2 Diabetes and Cognitive Functions in Middle Age: A Meta-
784 Analysis. *J Int Neuropsychol Soc*. Dec 21 2018:1-16. doi:10.1017/s1355617718001042
- 785 10. Biessels G, Staekenborg S, Brunner E, Brayne C, Scheltens P. Risk of dementia in diabetes
786 mellitus: a systematic review [published correction appears in *Lancet*]. *Lancet Neurol*. 2006;5(2):113.
787 doi:doi:10.1016/S1474-4422(05)70284-2
- 788 11. Ninomiya T. Diabetes mellitus and dementia. *Curr Diab Rep*. 2014;14(5):487.
789 doi:10.1007/s11892-014-0487-z
- 790 12. Tuligenga RH. Intensive glycaemic control and cognitive decline in patients with type 2 diabetes:
791 a meta-analysis. *Endocr Connect*. Jun 2015;4(2):R16-24. doi:10.1530/EC-15-0004
- 792 13. Sudlow C, Gallacher J, Allen N, et al. UK biobank: an open access resource for identifying the
793 causes of a wide range of complex diseases of middle and old age. *PLoS Med*. Mar 2015;12(3):e1001779.
794 doi:10.1371/journal.pmed.1001779
- 795 14. Chobanian AV, Bakris GL, Black HR, et al. Seventh report of the joint national committee on
796 prevention, detection, evaluation, and treatment of high blood pressure. *hypertension*. 2003;42(6):1206-
797 1252.

- 798 15. Maki PM, Henderson VW. Cognition and the menopause transition. *Menopause*. 2016;23(7):803-
799 805.
- 800 16. Thomas NJ, Jones SE, Weedon MN, Shields BM, Oram RA, Hattersley AT. Frequency and
801 phenotype of type 1 diabetes in the first six decades of life: a cross-sectional, genetically stratified survival
802 analysis from UK Biobank. *The Lancet Diabetes & Endocrinology*. 2018;6(2):122-129.
- 803 17. Seabold S, Perktold J. Statsmodels: Econometric and statistical modeling with python. 2010:92-
804 96.
- 805 18. Alfaro-Almagro F, Jenkinson M, Bangerter NK, et al. Image processing and Quality Control for
806 the first 10,000 brain imaging datasets from UK Biobank. *NeuroImage*. Feb 1 2018;166:400-424.
807 doi:10.1016/j.neuroimage.2017.10.034
- 808 19. Zang YF, He Y, Zhu CZ, et al. Altered baseline brain activity in children with ADHD revealed by
809 resting-state functional MRI. *Brain & development*. Mar 2007;29(2):83-91.
810 doi:10.1016/j.braindev.2006.07.002
- 811 20. Cox RW. AFNI: software for analysis and visualization of functional magnetic resonance
812 neuroimages. *Comput Biomed Res*. Jun 1996;29(3):162-73. doi:10.1006/cbmr.1996.0014
- 813 21. Cox RW, Hyde JS. Software tools for analysis and visualization of fMRI data. *NMR in biomedicine*.
814 Jun-Aug 1997;10(4-5):171-8. doi:10.1002/(sici)1099-1492(199706/08)10:4/5<171::aid-nbm453>3.0.co;2-
815 1
- 816 22. Fieller EC. Some problems in interval estimation. *Journal of the Royal Statistical Society: Series*
817 *B (Methodological)*. 1954;16(2):175-185.
- 818 23. Bower JK, Meadows RJ, Foster MC, Foraker RE, Shoben AB. The Association of Percent Body
819 Fat and Lean Mass With HbA1c in US Adults. *J Endocr Soc*. Jun 1 2017;1(6):600-608.
820 doi:10.1210/js.2017-00046
- 821 24. Bae JP, Lage MJ, Mo D, Nelson DR, Hoogwerf BJ. Obesity and glycemic control in patients with
822 diabetes mellitus: Analysis of physician electronic health records in the US from 2009-2011. *J Diabetes*
823 *Complications*. Mar 2016;30(2):212-20. doi:10.1016/j.jdiacomp.2015.11.016
- 824 25. Page MJ, Moher D, Bossuyt PM, et al. PRISMA 2020 explanation and elaboration: updated
825 guidance and exemplars for reporting systematic reviews. *bmj*. 2021;372
- 826 26. Team RC. R: A language and environment for statistical computing. R Foundation for Statistical
827 Computing. 2018;
- 828 27. Viechtbauer W. Conducting Meta-Analyses in R with The metafor Package. *Journal of Statistical*
829 *Software*. 08/01 2010;36doi:10.18637/jss.v036.i03
- 830 28. Cohen J. *Statistical power analysis for the behavioral sciences*. 2nd ed. L. Erlbaum Associates;
831 1988:xxi, 567 p.
- 832 29. Higgins JP, Thompson SG, Deeks JJ, Altman DG. Measuring inconsistency in meta-analyses. *Bmj*.
833 Sep 6 2003;327(7414):557-60. doi:10.1136/bmj.327.7414.557

- 834 30. Dockès Jm, Poldrack RA, Primet R, et al. NeuroQuery, comprehensive meta-analysis of human
835 brain mapping. *Elife*. 2020;9:e53385.
- 836 31. Fox PT, Parsons LM, Lancaster JL. Beyond the single study: function/location metanalysis in
837 cognitive neuroimaging. *Current opinion in neurobiology*. 1998;8(2):178-187.
- 838 32. Van Horn JD, Grafton ST, Rockmore D, Gazzaniga MS. Sharing neuroimaging studies of human
839 cognition. *Nature neuroscience*. 2004;7(5):473-481.
- 840 33. Yarkoni T, Poldrack RA, Van Essen DC, Wager TD. Cognitive neuroscience 2.0: building a
841 cumulative science of human brain function. *Trends in cognitive sciences*. 2010;14(11):489-496.
- 842 34. Yarkoni T, Poldrack RA, Nichols TE, Van Essen DC, Wager TD. Large-scale automated synthesis
843 of human functional neuroimaging data. *Nature methods*. 2011;8(8):665-670.
- 844 35. Sanchis-Segura C, Ibañez-Gual MV, Adrián-Ventura J, et al. Sex differences in gray matter
845 volume: how many and how large are they really? *Biology of sex Differences*. 2019;10(1):1-19.
- 846 36. Jain A, Bansal R, Kumar A, Singh K. A comparative study of visual and auditory reaction times
847 on the basis of gender and physical activity levels of medical first year students. *International Journal of*
848 *Applied and Basic Medical Research*. 2015;5(2):124.
- 849 37. Behl C. Oestrogen as a neuroprotective hormone. *Nature reviews Neuroscience*. Jun
850 2002;3(6):433-42. doi:10.1038/nrn846
- 851 38. Tomasi D, Wang GJ, Volkow ND. Energetic cost of brain functional connectivity. *Proceedings of*
852 *the National Academy of Sciences of the United States of America*. Aug 13 2013;110(33):13642-7.
853 doi:10.1073/pnas.1303346110
- 854 39. Weistuch C, Mujica-Parodi LR, Amgalan A, Dill KA. Metabolism modulates global synchrony in
855 the aging brain. *bioRxiv*. 2020;
- 856 40. Tomasi D, Volkow ND. Aging and functional brain networks. Research Support, N.I.H.,
857 Extramural. *Mol Psychiatry*. May 2012;17(5):471, 549-58. doi:10.1038/mp.2011.81
- 858 41. Mujica-Parodi LR, Amgalan A, Sultan SF, et al. Diet modulates brain network stability, a
859 biomarker for brain aging, in young adults. *Proceedings of the National Academy of Sciences of the United*
860 *States of America*. Mar 17 2020;117(11):6170-6177. doi:10.1073/pnas.1913042117
- 861 42. El Messari S, Ait-Ikhlef A, Ambroise DH, Penicaud L, Arluison M. Expression of insulin-
862 responsive glucose transporter GLUT4 mRNA in the rat brain and spinal cord: an in situ hybridization
863 study. *Journal of chemical neuroanatomy*. Nov 2002;24(4):225-42. doi:10.1016/s0891-0618(02)00058-3
- 864 43. Kobayashi M, Nikami H, Morimatsu M, Saito M. Expression and localization of insulin-regulatable
865 glucose transporter (GLUT4) in rat brain. *Neuroscience letters*. Aug 2 1996;213(2):103-6.
866 doi:10.1016/0304-3940(96)12845-7
- 867 44. El Messari S, Leloup C, Quignon M, Brisorgueil MJ, Penicaud L, Arluison M.
868 Immunocytochemical localization of the insulin-responsive glucose transporter 4 (Glut4) in the rat central
869 nervous system. *The Journal of comparative neurology*. Oct 5 1998;399(4):492-512.
870 doi:10.1002/(sici)1096-9861(19981005)399:4<492::aid-cne4>3.0.co;2-x

- 871 45. Vannucci SJ, Koehler-Stec EM, Li K, Reynolds TH, Clark R, Simpson IA. GLUT4 glucose
872 transporter expression in rodent brain: effect of diabetes. *Brain research*. Jun 22 1998;797(1):1-11.
873 doi:10.1016/s0006-8993(98)00103-6
- 874 46. Prast H, Fischer H, Werner E, Werner-Felmayer G, Philippu A. Nitric oxide modulates the release
875 of acetylcholine in the ventral striatum of the freely moving rat. *Naunyn Schmiedebergs Arch Pharmacol*.
876 Jul 1995;352(1):67-73. doi:10.1007/BF00169191
- 877 47. Kurotani S, Umegaki H, Ishiwata K, Suzuki Y, Iguchi A. The age-associated changes of dopamine-
878 acetylcholine interaction in the striatum. *Exp Gerontol*. Sep 2003;38(9):1009-13. doi:10.1016/s0531-
879 5565(03)00162-1
- 880 48. Ferreira-Vieira TH, Guimaraes IM, Silva FR, Ribeiro FM. Alzheimer's disease: Targeting the
881 Cholinergic System. *Curr Neuropharmacol*. 2016;14(1):101-15.
882 doi:10.2174/1570159x13666150716165726
- 883 49. Muramatsu I, Uwada J, Yoshiki H, et al. Novel regulatory systems for acetylcholine release in rat
884 striatum and anti-Alzheimer's disease drugs. *Journal of neurochemistry*. Jun 2019;149(5):605-623.
885 doi:10.1111/jnc.14701
- 886 50. Tessari P, Cecchet D, Cosma A, et al. Nitric oxide synthesis is reduced in subjects with type 2
887 diabetes and nephropathy. *Diabetes*. Sep 2010;59(9):2152-9. doi:10.2337/db09-1772
- 888 51. Sokoloff L, Mangold R, Wechsler RL, Kennedy C, Kety SS. Effect of Mental Arithmetic on
889 Cerebral Circulation and Metabolism. *Journal of Clinical Investigation*. 1955;34(7):1101-1108.
- 890 52. Clark DD, Sokoloff L. In: Siegel GJ, Agranoff BW, Albers RW, Risher SK, Uhler MD, eds. *Basic*
891 *Neurochemistry: Molecular, Cellular and Medical Aspects*. Lippincott; 1999:637-670.
- 892