

1 **Estimating the contribution of HIV-infected adults to household pneumococcal transmission in**
2 **South Africa, 2016-2018: A hidden Markov modelling study.**

3
4 **Authors**

5 Deus Thindwa^{1,2*}, Nicole Wolter^{3,4}, Amy Pinsent^{1,5}, Maimuna Carrim³, John Ojal^{1,6}, Stefano
6 Tempia^{3,7,8,9}, Jocelyn Moyes³, Meredith McMorro⁸, Jackie Kleynhans^{3,10}, Anne von Gottberg^{3,4}, Neil
7 French^{2,11}, Cheryl Cohen^{3,10‡}, Stefan Flasche^{1‡} on behalf of PHIRST group[†]

8
9 ¹ Centre for the Mathematical Modelling of Infectious Diseases, Department of Infectious Disease
10 Epidemiology, London School of Hygiene and Tropical Medicine, London, UK.

11 ² Malawi Liverpool Wellcome Trust Clinical Research Programme, Blantyre, Malawi.

12 ³ Centre for Respiratory Diseases and Meningitis, National Institute for Communicable Diseases of
13 the National Health Laboratory Service, Johannesburg, South Africa.

14 ⁴ School of Pathology, University of the Witwatersrand, Johannesburg, South Africa.

15 ⁵ Aquarius Population Health, London, UK.

16 ⁶ KEMRI-Wellcome Trust Research Programme, Geographic Medicine Centre, Kilifi, Kenya.

17 ⁷ Influenza Program, Centers for Disease Control and Prevention, Pretoria, South Africa.

18 ⁸ Influenza Division, Centers for Disease Control and Prevention, Atlanta, Georgia, USA.

19 ⁹ MassGenics, Duluth, Georgia, USA.

20 ¹⁰ School of Public Health, Faculty of Health Science, University of the Witwatersrand, Johannesburg,
21 South Africa.

22 ¹¹ Institute of Infection, Veterinary and Ecological Science, Department of Clinical Infection,
23 Microbiology, and Immunology, University of Liverpool, Liverpool, UK.

24
25 ‡ These authors contributed equally

26 † Membership of the PHIRST group is provided in the Acknowledgements.

27
28 * Corresponding author

29 Email: deus.thindwa@gmail.com

30 **NOTE: This preprint reports new research that has not been certified by peer review and should not be used to guide clinical practice.**

31 **Abstract**

32 Human immunodeficiency virus (HIV) infected adults are at a higher risk of pneumococcal
33 colonisation and disease, even while receiving antiretroviral therapy (ART). To help evaluate
34 potential indirect effects of vaccination of HIV-infected adults, we assessed whether HIV-infected
35 adults disproportionately contribute to household transmission of pneumococci. We constructed a
36 hidden Markov model to capture the dynamics of pneumococcal carriage acquisition and clearance
37 observed during a longitudinal household-based nasopharyngeal swabbing study, while accounting
38 for sample misclassifications. Households were followed-up twice weekly for 10 months for
39 nasopharyngeal carriage detection via real-time PCR. We estimated the effect of participant's age,
40 HIV status, presence of a HIV-infected adult within the household and other covariates on
41 pneumococcal acquisition and clearance probabilities. Of 1,684 individuals enrolled, 279 (16.6%)
42 were younger children (<5 years-old) of whom 4 (1.5%) were HIV-infected and 726 (43.1%) were
43 adults (≥ 18 years-old) of whom 214 (30.4%) were HIV-infected, most (173, 81.2%) with high CD4+
44 count. The observed range of pneumococcal carriage prevalence across visits was substantially higher
45 in younger children (56.9-80.5%) than older children (5-17 years-old) (31.7-50.0%) or adults (11.5-
46 23.5%). We estimate that 14.4% (95% Confidence Interval [CI]: 13.7-15.0) of pneumococcal-
47 negative swabs were false negatives. Daily carriage acquisition probabilities among HIV-uninfected
48 younger children were similar in households with and without HIV-infected adults (hazard ratio: 0.95,
49 95%CI: 0.91-1.01). Longer average carriage duration (11.4 days, 95%CI: 10.2-12.8 vs 6.0 days,
50 95%CI: 5.6 - 6.3) and higher median carriage density (622 genome equivalents per millilitre, 95%CI:
51 507-714 vs 389, 95%CI: 311.1-435.5) were estimated in HIV-infected vs HIV-uninfected adults. The
52 use of ART and antibiotics substantially reduced carriage duration in all age groups, and acquisition
53 rates increased with household size. Although South African HIV-infected adults on ART have longer
54 carriage duration and density than their HIV-uninfected counterparts, they show similar patterns of
55 pneumococcal acquisition and onward transmission.

56

57 **Author summary**

58 We assessed the contribution of HIV-infected adults to household pneumococcal transmission by
59 applying a hidden Markov model to pneumococcal cohort data comprising 115,595 nasopharyngeal
60 samples from 1,684 individuals in rural and urban settings in South Africa. We estimated 14.4% of
61 sample misclassifications (false negatives), representing 85.6% sensitivity of a test that was used to
62 detect pneumococcus. Pneumococcal carriage prevalence and acquisition rates, and average duration
63 were usually higher in younger or older children than adults. The use of ART and antibiotics reduced
64 the average carriage duration across all age and HIV groups, and carriage acquisition risks increased
65 in larger household sizes. Despite the longer average carriage duration and higher median carriage
66 density in HIV-infected than HIV-uninfected adults, we found similar carriage acquisition and
67 onward transmission risks in the dual groups. These findings suggest that vaccinating HIV-infected
68 adults on ART with PCV would reduce their risk for pneumococcal disease but may add little to the
69 indirect protection against carriage of the rest of the population.

70

71 **Introduction**

72 *Streptococcus pneumoniae* (pneumococcus) caused an estimated 3.7 million cases of invasive
73 pneumococcal disease (IPD) and 317,300 deaths in children <5 years-old, globally in 2015 [1,2].
74 While severe disease is largely concentrated in young children and older adults, human
75 immunodeficiency virus (HIV)-infected adults are also at an increased risk of both colonisation and
76 IPD [3–7]. HIV affects the T and B cell function, resulting in impaired responses to control
77 pneumococcal carriage at mucosal level [8–10]. Although the universal scale-up of antiretroviral
78 therapy (ART) [11,12] has successfully reduced IPD risk in HIV-infected adults [13,14], the IPD risk
79 remains elevated if compared to HIV-uninfected adults [5,6]. ART partially reconstitutes mucosal
80 immunity by increasing B and T cell quantity and functionality [8,15], but deficiencies in humoral
81 mucosal response due to depleted or persistent defects in memory cell function persist after ART
82 initiation [16–18].

83
84 Despite mature pneumococcal conjugate vaccine (PCV) infant immunisation programmes, continued
85 circulation of vaccine preventable serotypes in adults has been observed throughout Africa [19–25].
86 In some countries, such as Malawi, Mozambique, and Kenya, this intersects with areas of high HIV
87 prevalence. Adult HIV prevalence in Africa remains high [26] as a consequence of improved survival
88 with ART use [11,12] and persistently high HIV incidence [27], thus the high risk of pneumococcal
89 carriage and IPD in HIV-infected adults in Africa remains a concern.

90
91 Vaccination of African HIV-infected adults with PCV, similar to the recommendations in many high-
92 income countries, may not only reduce their disease burden but also vaccine serotype pneumococcal
93 acquisition and hence onward transmission and may thus benefit non-vaccinated populations [28]. We
94 hypothesised that children living with HIV-infected adults have higher rates of pneumococcal carriage
95 acquisition due to increased exposure from frequently colonised HIV-infected adults who usually
96 have a prolonged higher carriage prevalence [5]. In this study, we assessed whether HIV-infected

97 adults contribute more to pneumococcal transmission within the household than their HIV-uninfected
98 counterparts.

99

100 **Methods**

101 **Data description**

102 The temporal dynamics of pneumococcal colonisation were observed in a cohort study (Prospective
103 Household Observational Cohort Study of Influenza, Respiratory Syncytial Virus and Other
104 Respiratory Pathogens Community Burden and Transmission Dynamics - PHIRST) conducted
105 between 2016 and 2018 in a rural (Agincourt) and an urban (Klerksdorp) community in South Africa.
106 Households were randomly selected, and were eligible for the study if they had ≥ 3 household
107 members and the household members resided in the household for ≥ 1 year prior to study
108 commencement, had no plan to relocate during study duration, and consented to participate in the
109 study. Also, enrolment ensured that more than half of the households included at least one child aged
110 < 5 years, and a new cohort was enrolled every study year [29,30].

111

112 A total of 1,684 individuals from 327 households were enrolled and followed up from May to October
113 in 2016 and January to October in 2017 and 2018. The median household size was 5 (interquartile
114 range 4-7). Nasopharyngeal (NP) swabs were taken twice weekly, resulting in 115,595 total NP
115 samples from 1,684 individuals [28]. The swabs were tested for the presence of pneumococci using
116 real-time quantitative polymerase chain reaction (qPCR), targeting the autolysin (*lytA*) gene [31].
117 Serotyping was not performed. On enrolment, all household members were tested for HIV infection
118 and the demographic characteristics of the study participants was recorded.

119

120 **Modelling framework**

121 We used a continuous time, time homogeneous, hidden Markov model (HMM) which assumed a
122 Susceptible – Infected – Susceptible (SIS) framework [32–38], to fit to individual level trajectories of
123 colonisation during the study period. An individual can be either infected (I) and currently carrying

124 pneumococci or be susceptible (S). Thus, the model can be described by transition intensities between
125 S and I for acquisition (q_{12}) and clearance (q_{21}) in the transition intensity matrix $Q =$
126 $\begin{pmatrix} -q_{12} & q_{12} \\ q_{21} & -q_{21} \end{pmatrix}$. Covariates for acquisition and clearance rates are incorporated via a proportional
127 hazard. To obtain the transition probabilities, matrix $P = \begin{pmatrix} 1 - p_{12} & p_{12} \\ p_{21} & 1 - p_{21} \end{pmatrix}$ is defined and
128 explicitly calculated through matrix exponential, $P = \exp(Q(t))$, where p_{12} is the probability of
129 being in state 2 (I) at time $t > 0$, given that the previous state was 1 (S). A more detailed description
130 of the Markov transition process is provided in the Supplement.

131
132 In the hidden Markov modelling (HMM) framework [34,39–44], the states S and I of the Markov
133 Chain ($X_i(t)$) for individual i at time t are not observed directly, but approximated by the results of a
134 NP swab. The link between the modelled, true infection status and observed pneumococcal carriage
135 states in the model ($Y_i(t)$) is governed by emission probabilities conditional on the unobserved state.
136 We assumed 100% specificity of the NP swab and the PCR (no false positive) while estimating the
137 proportion of false negative results (e) probabilistically (observed vs hidden/truth states). Hence, the
138 emission matrix is given as $E = \begin{pmatrix} 1 & 0 \\ e_{21} & 1 - e_{21} \end{pmatrix}$ where $e_{21} = \Pr(Y_i(t) = 1 \mid X_i(t) = 2)$.

139
140 We assumed that the observed states are conditionally independent given the values of the unobserved
141 states and that the future Markov chain is independent of its history beyond the current state (Markov
142 property) (Fig 1). Thus, the likelihood is the product of the emission probability density and the
143 transition probability of hidden Markov chain summed over all possible paths of the hidden states
144 (explicitly defined in the Supplement).

145
146 Our model assumed that carriage acquisition at the current observation point was a function of
147 individual age group (younger child aged <5 years, older child aged 5-17 years, or adult aged ≥ 18
148 years), HIV status (infected or uninfected), number of HIV-infected adult(s) in the household, place
149 of carriage exposure (household or community), and household size. Carriage duration was modified

150 by individual age, HIV status, ART status, and antibiotic use. The place of carriage exposure is
151 generally unknown without fine-scale serotype data. Crudely, we assumed that if a household member
152 is currently infected while all other household members were susceptible at the last observation point,
153 then current carriage acquisition of that member was attributable to community transmission [34].
154 Otherwise we assumed that the transmission was from within the same household (Fig 1).

155

156 **Model fit, convergence and prediction**

157 The model was fitted to longitudinal data of pneumococcal carriage dynamics in a maximum
158 likelihood framework using Bound Optimisation By Quadratic Approximation optim algorithm
159 facilitated by msm R package [34,45]. To ascertain convergence of the model, we purposefully
160 selected five unique pairs of initial transition intensities $\{S, I\}$ for the Q matrix, then refitted the
161 model five times, each time starting a Markov chain with a unique dyad and iterating 1,000 times to
162 obtain similar final transition intensities and $-2\log$ -likelihood. Model predictions were assessed by
163 comparing infection and susceptibility prevalence in 14-day intervals for the observed data to the
164 fitted values. (S1 Fig) [34].

165

166 **Decoding the underlying carriage sequence**

167 After fitting the HMM, a Viterbi algorithm with the msm function was used to recursively construct
168 the sequence of pneumococcal carriage with the highest probability through the hidden states [46].
169 The probability of each hidden state at each observation point, conditionally on all the data was
170 computed using Baum-Welch forward/backward algorithm. Thus, an overall misclassification
171 probability of the observed states given the hidden states was computed. Model estimates of carriage
172 transition intensity and probability were adjusted for misclassification probability (S2 Fig).

173

174 **Sensitivity analysis**

175 In a sensitivity analysis, three alternative and potentially more parsimonious models were fitted
176 separately to the data. Fits of these models were compared to the main model using the on Akaike

177 Information Criterion (AIC) [47] and checked whether they yielded qualitatively different results to
178 the main model. Each of the four fitted models assumed the same number of covariates to modify
179 carriage acquisition intensity but varying number of covariates assumed to modify carriage duration.
180 Potential modifiers of carriage duration included age and HIV status for model 1; age, HIV status and
181 antibiotic use for model 2; age, HIV status and viral load based ART status for model 3; and age, HIV
182 status, antibiotic use and viral load based ART status for main model 4 (S1 Table).

183
184 Further, we examined the impact of alternative stratification of covariates on the changes in carriage
185 transition probabilities: (i) while the main analysis estimated age- and HIV-stratified carriage
186 acquisition rates comparing households with ≥ 1 HIV-infected adult(s) versus households without
187 HIV-infected adults, in the sensitivity analysis, we estimated age- and HIV-stratified carriage
188 acquisition rates comparing households with 0,1, 2, 3, 4 and 5 HIV-infected adult(s) and (ii) rather
189 than assuming time-homogeneous intensities throughout the study period, we relaxed this assumption
190 by fitting a time-inhomogeneous model with piecewise follow-up periods; 0-99 days, 100-139, 140-
191 199, 200-219 and 220-289 (S3 Fig).

192
193 Statistical significance was set at <0.05 . All analyses were conducted in R v3.5.0 [34,48] and are
194 available via <https://github.com/deusthindwa/hmm.pneumococcus.hiv.south-africa>.

195

196 **Ethical approval**

197 The longitudinal pneumococcal carriage data described in this study were obtained from consenting
198 South African children and adults as part of the PHIRST study. The use of data was granted by the
199 University of Witwatersrand, Human Research Ethics Committee (HREC) and the Protocol Review
200 Committee (PRC) under approval #150808, the US CDC's Institutional Review Board relied on the
201 local review (#6840), and the London School of Hygiene & Tropical Medicine Observational
202 Research Ethics Committee under approval #17902.

203

204 **Results**

205 **Descriptive analysis**

206 A total of 327 households were recruited in the PHIRST study of which 166 (50.8%) had at least one
207 member living with HIV infection. At enrolment, of 1,684 individuals included in the study, 279
208 (16.6%) were younger children aged less than 5 years old of whom 4 (1.5%) were HIV-infected, and
209 679 (40.3%) were older children aged between 5-17 years old of whom 31 (4.7%) were HIV-infected.
210 Among the 726 (43.1%) study participants aged 18 years or older (“adults”), 214 (30.4%) were HIV-
211 infected, and 505 (69.6%) were females. Among those HIV-infected adults, 196 (86.7%) self-reported
212 to be on ART, although only 151 (79.5%) had CD4+ cell count of more than 350. Most adults were
213 non-smokers (69.6%) and did not regularly consume alcohol (57.4%). A similar proportion of
214 children lived in households with (50.6%) and without (49.4%) at least one HIV-infected adult.
215 Among 231 younger children with vaccine information available, 227 (98.3%) received first PCV
216 dose at 6 weeks, 225 (97.4%) second dose at 14 weeks and 216 (93.5%) third dose at 9 months of age
217 (Table 1).

218

219 **Carriage prevalence and density**

220 Among HIV-uninfected participants, observed pneumococcal carriage prevalence was higher in
221 younger children (range across visits: 56.9-80.5%) than older children (31.7-50.0%) and was lowest
222 in adults (11.5-23.5%) (Fig 2A). Among HIV-infected participants, pneumococcal carriage
223 prevalence fluctuated in younger children (0-100%), in older children (30-77%), and in adults (14-
224 34%) (Fig 2A). The likelihood of detecting pneumococcal carriage during visits was higher for
225 children than adults and for HIV-infected younger children or older children or adults than their HIV-
226 uninfected counterparts (Fig 2B). Carriage prevalence among younger HIV-uninfected children was
227 lower in households with less than 6 members (65.5%, 95%CI: 64.5-66.5) than in households with 6-
228 10 (72.5%, 95%CI: 71.5-73.5) or household more than 10 members (85.6%, 95%CI: 82.4-88.8) but it
229 was similar in HIV-infected children across household size groups (Fig 2C). Carriage prevalence
230 fluctuated across visits by HIV-infection and sex in adults, with similar ranges between HIV-

231 uninfected male adults 10.8-25.3% and HIV-uninfected female adults 10.2-24.0%, and between HIV-
232 infected male adults 6.3-40.7% and HIV-infected female adults 12.3-34.6% (S5A Fig).

233

234 Median pneumococcal carriage density, in genome equivalents per millilitre (GE/ml), was
235 significantly higher in younger children (24,341, 95%CI: 22,638-26,122) than older children (3,490,
236 95%CI: 3,168-3,754) or adults (476, 95%CI: 429-522). Also, median carriage density was higher in
237 HIV-infected than HIV-uninfected older children (11,156, 95%CI: 8,681-13,948 vs 3,221, 95%CI:
238 2,911-3,472) or adults (622, 95%CI: 507-714 vs 389, 95%CI: 311-435), and not in younger children
239 (33,050, 95%CI: 22,690-42,293 vs 24,124, 95%CI: 22,547-25,838) (Fig 2D). Conversely, median
240 carriage density was similar between those not on ART compared to those on ART in older children
241 (9,624, 95%CI: 5,289-11,843 vs 8,818, 95%CI: 5,102-12,720) or adults (861, 95%CI: 508-1,001 vs
242 499, 95%CI: 382-586), and not in younger children (25,430, 95%CI: 13,138-40,245 vs 91,566,
243 95%CI: 43,355-265,628) (Fig 2E). About 14.4%, 95%CI: 13.7-15.0 of negative NP swab results were
244 estimated probabilistically to be false negatives.

245

246 **Pneumococcal carriage acquisition**

247 Overall, pneumococcal carriage acquisition was higher in older children (1.15, 95%CI: 1.08-1.23) and
248 younger children (1.52, 95%CI: 1.38-1.68) than adults. Acquisition of carriage was more frequently
249 observed when at least another household member was infected half a week before (and hence
250 attributed to household transmission) than in previously uninfected households (1.80, 95%CI: 1.68-
251 1.93). Irrespective of age and HIV status, acquisition rates from within the household increased with
252 household size; by 1.05 (95%CI: 1.00-1.10) in households with 6-10 members and by 1.41 (95%CI:
253 1.24-1.60) in households with 11 or more members compared to households with less than 6
254 members. However, within household carriage acquisition rates in children, irrespective of age group
255 and HIV status, were not higher in the households with at least one HIV-infected adult (0.95, 95%CI:
256 0.91-1.01) (Table 2, Fig 3). In addition, daily carriage acquisition rates in HIV-uninfected younger

257 children did not significantly vary between households with HIV-infected female adults (0.14,
258 95%CI: 0.12-0.17) and those with HIV-infected male adults (0.13, 95%CI: 0.11-0.15) (S5 Fig).

259

260 We estimated 3.8 carriage acquisition episodes per year, (95%CI: 3.4-4.2) for HIV-infected younger
261 children, 5.9 (95%CI: 5.4-6.3) for HIV-uninfected younger children, 7.4 (95%CI: 6.7-8.1) for HIV-
262 infected older children and 10.6 (95%CI: 10.2-11.0) for HIV-uninfected older children from
263 households with at least one HIV-infected adult, and these were similar to their counterparts from
264 households without HIV-infected adults (3.8, 95%CI: 3.3-4.2 and 5.8, 95%CI: 5.4-6.3, and 7.3,
265 95%CI: 6.6-8.0 and 10.3, 95%CI: 9.9-10.8, respectively) (Fig 3, S2 Table).

266

267 **Pneumococcal carriage duration**

268 The average duration of pneumococcal carriage was highest in HIV-infected and HIV-uninfected
269 younger children (107.9 days, 95%CI: 92.1-124.7 and 56.3 days, 95%CI: 51.1-62.1) followed by
270 HIV-infected and HIV-uninfected older children (33.9 days, 95%CI: 29.9-38.6 and 17.9 days, 95%CI:
271 16.8-18.5), and HIV-infected and HIV-uninfected adults (11.4 days, 95%CI: 10.2-12.8 and 6.0 days,
272 95%CI: 5.6-6.3) (Fig 4C, Fig 4D, and S3 Table).

273

274 Pneumococcal carriage cleared slower in older children (Hazard Ratio [HR]: 0.34, 95%CI: 0.31-0.36)
275 and younger children (HR: 0.10, 95%CI: 0.09-0.12) when compared to adults. Carriage clearance was
276 slower in HIV-infected than in HIV-uninfected individuals (HR: 0.52, 95%CI: 0.46-0.59), and faster
277 in HIV-infected individuals with successfully suppressed viral load than in those without successful
278 viral suppression (HR: 1.29, 95%CI: 1.13-1.47) (Fig 4B, Table 2). Antibiotic use may have
279 accelerated pneumococcal clearance; however, the effect was not statistically significant (HR: 1.47,
280 95%CI: 0.67-3.25) (Fig 4A, Table 2).

281

282 **Sensitivity analysis**

283 In the sensitivity analysis, a model that included age, HIV status, antibiotic use, and ART status as
284 potential modifiers for pneumococcal carriage duration had the lowest AIC score as well as for
285 including both antibiotic use and ART status (S1 Table). Increasing the number of HIV-infected
286 adults within household to 1, 2, 3, 4, and 5 resulted in similar estimates of pneumococcal carriage
287 acquisition in younger or older children (S3A Fig). Our results were also robust when instead of
288 assuming a time homogeneous hidden Markov model, we allowed for the estimation of time varying
289 transition probabilities (S3B Fig)

290

291 **Discussion**

292 We used a HMM to better understand pneumococcal carriage dynamics, and the role of HIV-infected
293 adults in it, using data from a densely sampled longitudinal South African cohort using data from
294 115,595 nasopharyngeal swabs. We estimated that children have higher acquisition rates and duration
295 of carriage than adults, and that, within a household, HIV-infected adults are not more likely to
296 transmit pneumococci to children than HIV-uninfected adults. Pneumococcal acquisition events
297 increased with larger household size irrespective of age and HIV status. Although ART use reduced
298 pneumococcal carriage duration in HIV-infected children and adults, they still carry pneumococci for
299 longer than their HIV-uninfected counterparts.

300

301 Higher household acquisition rates in children than adults have been reported previously [32,49–53],
302 although not consistently across studies [35,54]. This may reflect setting-specific population mixing
303 behaviour and immunisation levels. Similarly, and for the first time in the presence of a mature infant
304 PCV routine vaccination programme, we find that children both have higher acquisition rates than
305 adults and carry pneumococci for longer, making them a likely key source for pneumococcal
306 transmission in and beyond the household [55,56].

307

308 We postulated that HIV-infected adults were more likely to carry pneumococci and may have higher
309 carriage density which individually or in combination may increase their risk for pneumococcal
310 transmission compared to HIV-uninfected adults. Prior to infant PCV introduction, a study in Malawi
311 showed that HIV-infected adults on ART had higher carriage prevalence than those not on ART [5],
312 and two studies in South Africa also found that HIV-infected adults (mothers) had higher carriage
313 prevalence than their HIV-uninfected counterparts, irrespective of ART status [32,49]. In addition,
314 HIV-infected adults (mothers) were found to transmit pneumococci to their children more often than
315 HIV-uninfected peers [32]. We generated additional evidence showing that, in the PCV era, carriage
316 prevalence is slightly increased in HIV-infected adults on ART compared to HIV-uninfected adults as
317 a result of reduced carriage clearance rates. We also show that median carriage density is higher in
318 HIV-infected than HIV-uninfected adults. However, we find no evidence that carriage density is
319 modified by ART status in HIV-infected adults (Fig 2). Further research may need to investigate
320 whether differential effects of ART on pneumococcal carriage density in adults by country may be
321 driven by types of ART regimens used.

322

323 Furthermore, our model estimates that the presence of an HIV-infected adult in the household does
324 not increase the risk for pneumococcal carriage acquisition in co-habiting children. Although it is
325 possible that there may have been other HIV-infected adults within households who were not enrolled
326 into the study, it is unlikely this would alter the results given the insensitive acquisition estimates with
327 increasing number of HIV-infected adults within household (S3A Fig). These findings support the
328 notion that ART largely, but not completely, reconstitutes the anti-pneumococcal mucosal immune
329 response in HIV-infected adults [8]. This would imply that HIV-infected adults do not contribute
330 disproportionately to pneumococcal transmission when on ART and hence that their vaccination is
331 unlikely to substantially add to the herd protection already induced by the childhood immunisation
332 programme although vaccination will provide direct protection against IPD in HIV-infected adults.

333

334 Our observation of increasing pneumococcal carriage acquisition rates with higher household size has
335 also been reported previously [36] and suggests density dependent transmission in the household [57].

336 In line with evidence before infant PCV introduction [32,36], we find that pneumococcal carriage
337 acquisition probabilities from the community were higher in children than in adults irrespective of
338 HIV status, likely in part due to frequent effective contacts among playschool children [49,58] and
339 immature immunity in children relatively to adults. We also estimate that children were twice as
340 likely to get infected from within the household than from the community. However, we base this
341 inference on the identified pneumococcal carriage in a household member at the previous visit.

342

343 In the absence of serotyping of the pneumococcal isolates, our inferences may be prone to
344 overestimation within household transmission by linking family members who in fact were infected
345 with different pneumococcal serotypes. Similarly, serotyping would enhance our ability to
346 differentiate a single and long carriage episode from almost immediate re-acquisition or the clearance
347 of the dominant serotype while the previously subdominant serotype persists. This may have led to an
348 overestimation of carriage duration and underestimated clearance rates. However, the mean carriage
349 duration of 56 days (51-62) in HIV-uninfected children estimated in this study aligns with studies that
350 used serotype data [32,35,49,59]. While both the estimates for duration of carriage and the
351 contribution of household transmission may be somewhat exaggerated, the lack of serotyping should
352 not have affected our primary outcome, the relative contribution of HIV infected adults to
353 pneumococcal transmission.

354

355 The use of ART, as inferred from measured viral load in study participants, reduced pneumococcal
356 carriage duration by 22% compared to no ART use within each age group of HIV-infected
357 participants. However, mean pneumococcal carriage duration remained slightly higher than their
358 HIV-uninfected counterparts (Fig 4). Our model also estimated the sensitivity of the swabbing and
359 qPCR testing regime for the detection of pneumococcal carriage. We estimate that about 1 in 7 swabs
360 were misclassified as pneumococcal negative. False negatives might have arisen as a result of the
361 sampling technique or if samples contained insufficient quantities of bacteria to successfully amplify
362 and detect [58]. We assumed 100% specificity of an assay targeting the autolysin gene as the

363 probability of false positives is seemingly very low [31,59]. Our estimated misclassification
364 probability in this study is within 10-20% range of values that were reported elsewhere [59,60].
365
366 In conclusion, we used one of the most densely sampled longitudinal pneumococcal carriage studies
367 to infer the role of HIV-infected adults in pneumococcal transmission in the PCV and ART era. We
368 find that the transmission risk from HIV-infected adults largely aligns with that of their uninfected
369 counterpart. This implies that PCV use in HIV-infected adults who have access to ART would reduce
370 their risk for pneumococcal disease but may have little added benefit over vaccinating other adults to
371 the indirect protection against carriage of the rest of the population.
372

373

374 **Declaration**

375 **Funding**

376 This research was commissioned by the National Institute for Health Research (NIHR) Global Health
377 Research Unit on Mucosal Pathogens under the UK Government. PHIRST study was funded by a
378 cooperative agreement with the United States Centers for Disease Control and Prevention (grant
379 number 1U01IP001048) and the Bill and Melinda Gates Foundation (Grant number: OPP1164778).

380

381 **Acknowledgement**

382 DT, OJ are supported by the National Institute for Health Research (NIHR) Global Health Research
383 Unit on Mucosal Pathogens (MPRU) using UK aid from the UK Government (16/136/46). AP is
384 supported by the Bill and Melinda Gates Foundation. SF is supported by a Sir Henry Dale Fellowship
385 jointly funded by the Wellcome Trust and the Royal Society (Grant number 208812/Z/17/Z). CC and
386 AvG receive grant support through their institution from Sanofi Pasteur. The funders had no
387 involvement in the study design; collection, analysis and interpretation of data; writing of the report;
388 or decision to submit the article for publication. Members of the Prospective Household Observational
389 Cohort Study of Influenza, Respiratory Syncytial Virus and Other Respiratory Pathogens Community
390 Burden and Transmission Dynamics (PHIRST) have played a role of funding-acquisition and
391 administration. The following are members of the PHIRST group: Centre for Respiratory Diseases
392 and Meningitis, National Institute for Communicable Diseases of the National Health Laboratory
393 Service, Johannesburg, South Africa (Amelia Buys, Lorens Maake, Florette Treurnicht, Orienka
394 Hellferscee, Thulisa Mkhencele); Environment and Health Research Unit, South African Medical
395 Research Council, Johannesburg, South Africa (Angie Mathee); Unit for Environmental Science and
396 Management, School of Geo- and Spatial Science, North-West University, Potchefstroom, South
397 Africa (Brigitte Language, Stuart Piketh); School of Public Health, Faculty of Health Sciences,
398 University of the Witwatersrand, Johannesburg (Lorens Maake, Floidy Wafawanaka, Ryan G
399 Wagner, F. Xavier Gómes-Olivé, Kathleen Kahn); Perinatal HIV Research Unit, MRC Soweto

400 Matlosana Collaborating Centre for HIV/AIDS and TB, University of the Witwatersrand,
401 Johannesburg, South Africa (Katlego Mothlaoleng, Limakatso Lebina, Neil A Martinson); Johns
402 Hopkins University Center for TB Research, Baltimore, Maryland, United States of America (Neil A
403 Martinson). We are grateful to all individuals who participated in the PHIRST study. We also thank
404 all community leaders from Agincourt Klerksdorp for allowing us to conduct PHIRST study in these
405 areas.

406

407 **Author contribution**

408 Conceptualization: DT, SF, NF; Methodology: DT, SF, AP; Writing-Original Draft: DT; Writing-
409 Review and Editing: DT, NW, AP, CM, JO, ST, JM, MM, JK, AvG, NF, CC, SF; Funding-
410 Acquisition: DT, CC, AvG. All authors read and approved the final manuscript.

411

412 **Competing interests**

413 The authors declare that they have no known competing financial interests or personal relationships
414 that could have appeared to influence the work reported in this paper.

415

416 **Disclaimer**

417 The findings and conclusions in this publication are those of the authors and do not necessarily
418 represent the official position of the United States Centers for Disease Control and Prevention, the
419 NIHR or the Department of Health and Social Care.

420

421 Reference

- 422 1. O'Brien KL, Wolfson LJ, Watt JP, Henkle E, Deloria-Knoll M, McCall N, et al. Burden of
423 disease caused by *Streptococcus pneumoniae* in children younger than 5 years: global
424 estimates. *The Lancet*. 2009;374: 893–902. doi:10.1016/S0140-6736(09)61204-6
- 425 2. Wahl B, O'Brien KL, Greenbaum A, Majumder A, Liu L, Chu Y, et al. Burden of
426 *Streptococcus pneumoniae* and *Haemophilus influenzae* type b disease in children in
427 the era of conjugate vaccines: global, regional, and national estimates for 2000–15.
428 *The Lancet Global Health*. 2018;6: e744–e757. doi:10.1016/S2214-109X(18)30247-X
- 429 3. van Aalst M, Lötsch F, Spijker R, van der Meer JTM, Langendam MW, Goorhuis A, et al.
430 Incidence of invasive pneumococcal disease in immunocompromised patients: A
431 systematic review and meta-analysis. *Travel Medicine and Infectious Disease*. 2018;24:
432 89–100. doi:10.1016/j.tmaid.2018.05.016
- 433 4. Corcoran M, Vickers I, Mereckiene J, Murchan S, Cotter S, Fitzgerald M, et al. The
434 epidemiology of invasive pneumococcal disease in older adults in the post-PCV era. Has
435 there been a herd effect? *Epidemiology & Infection*. 2017;145: 2390–2399.
436 doi:10.1017/S0950268817001194
- 437 5. Heinsbroek E, Tafatatha T, Phiri A, Ngwira B, Crampin A, Read J, et al. Persisting high
438 prevalence of pneumococcal carriage among HIV-infected adults receiving
439 antiretroviral therapy in Malawi. *Aids*. 2015;29: 1837–1844.
440 doi:10.1097/QAD.0000000000000755
- 441 6. Nunes MC, Gottberg A von, Gouveia L de, Cohen C, Kuwanda L, Karstaedt AS, et al.
442 Persistent High Burden of Invasive Pneumococcal Disease in South African HIV-Infected
443 Adults in the Era of an Antiretroviral Treatment Program. *PLOS ONE*. 2011;6: e27929.
444 doi:10.1371/journal.pone.0027929
- 445 7. Gill CJ, Mwanakasale V, Fox MP, Chilengi R, Tembo M, Nsofwa M, et al. Impact of
446 Human Immunodeficiency Virus Infection on *Streptococcus pneumoniae* Colonization
447 and Seroepidemiology among Zambian Women. *J Infect Dis. Oxford Academic*;
448 2008;197: 1000–1005. doi:10.1086/528806
- 449 8. Zhang L, Li Z, Wan Z, Kilby A, Kilby JM, Jiang W. Humoral immune responses to
450 *Streptococcus pneumoniae* in the setting of HIV-1 infection. *Vaccine*. 2015;33: 4430–
451 4436. doi:10.1016/j.vaccine.2015.06.077
- 452 9. Jochems SP, Weiser JN, Malley R, Ferreira DM. The immunological mechanisms that
453 control pneumococcal carriage. *PLOS Pathogens*. 2017;13: e1006665.
454 doi:10.1371/journal.ppat.1006665
- 455 10. Iwajomo OH, Finn A, Ogunniyi AD, Williams NA, Heyderman RS. Impairment of
456 Pneumococcal Antigen Specific Isotype-Switched IgG Memory B-Cell Immunity in HIV
457 Infected Malawian Adults. *PLOS ONE*. 2013;8: e78592.
458 doi:10.1371/journal.pone.0078592

- 459 11. Harries AD, Ford N, Jahn A, Schouten EJ, Libamba E, Chimbwandira F, et al. Act local,
460 think global: how the Malawi experience of scaling up antiretroviral treatment has
461 informed global policy. *BMC Public Health*. 2016;16: 938. doi:10.1186/s12889-016-
462 3620-x
- 463 12. Jahn A, Harries AD, Schouten EJ, Libamba E, Ford N, Maher D, et al. Scaling-up
464 antiretroviral therapy in Malawi. *Bulletin of the World Health Organization*. 2016;94:
465 772–776. doi:10.2471/BLT.15.166074
- 466 13. Heffernan RT, Barrett NL, Gallagher KM, Hadler JL, Harrison LH, Reingold AL, et al.
467 Declining Incidence of Invasive *Streptococcus pneumoniae* Infections among Persons
468 with AIDS in an Era of Highly Active Antiretroviral Therapy, 1995–2000. *J Infect Dis*.
469 2005;191: 2038–2045. doi:10.1086/430356
- 470 14. Everett DB, Mukaka M, Denis B, Gordon SB, Carrol ED, Oosterhout JJ van, et al. Ten
471 Years of Surveillance for Invasive *Streptococcus pneumoniae* during the Era of
472 Antiretroviral Scale-Up and Cotrimoxazole Prophylaxis in Malawi. *PLOS ONE*. 2011;6:
473 e17765. doi:10.1371/journal.pone.0017765
- 474 15. Nunes MC, Madhi SA. Safety, immunogenicity and efficacy of pneumococcal conjugate
475 vaccine in HIV-infected individuals. *Human Vaccines & Immunotherapeutics*. 2012;8:
476 161–173. doi:10.4161/hv.18432
- 477 16. Eley B. Immunization in Patients with HIV Infection. *Drugs*. 2008;68: 1473–1481.
478 doi:10.2165/00003495-200868110-00001
- 479 17. De Milito A, Mörch C, Sönnernborg A, Chiodi F. Loss of memory (CD27) B lymphocytes in
480 HIV-1 infection. *AIDS*. 2001;15: 957.
- 481 18. Madhi SA, Kuwanda L, Cutland C, Holm A, Käyhty H, Klugman KP. Quantitative and
482 Qualitative Antibody Response to Pneumococcal Conjugate Vaccine Among African
483 Human Immunodeficiency Virus-Infected and Uninfected Children. *The Pediatric*
484 *Infectious Disease Journal*. 2005;24: 410. doi:10.1097/01.inf.0000160942.84169.14
- 485 19. Swarthout TD, Fronterre C, Lourenço J, Obolski U, Gori A, Bar-Zeev N, et al. High residual
486 carriage of vaccine-serotype *Streptococcus pneumoniae* after introduction of
487 pneumococcal conjugate vaccine in Malawi. *Nature Communications*. Nature
488 Publishing Group; 2020;11: 2222. doi:10.1038/s41467-020-15786-9
- 489 20. Lourenço J, Obolski U, Swarthout TD, Gori A, Bar-Zeev N, Everett D, et al. Determinants
490 of high residual post-PCV13 pneumococcal vaccine-type carriage in Blantyre, Malawi: a
491 modelling study. *BMC Medicine*. 2019;17. doi:10.1186/s12916-019-1450-2
- 492 21. Heinsbroek E, Tafatatha T, Phiri A, Swarthout TD, Alaerts M, Crampin AC, et al.
493 Pneumococcal carriage in households in Karonga District, Malawi, before and after
494 introduction of 13-valent pneumococcal conjugate vaccination. *Vaccine*. 2018;36:
495 7369–7376. doi:10.1016/j.vaccine.2018.10.021

- 496 22. Hammitt LL, Etyang AO, Morpeth SC, Ojal J, Mutuku A, Mturi N, et al. Effect of ten-valent
497 pneumococcal conjugate vaccine on invasive pneumococcal disease and
498 nasopharyngeal carriage in Kenya: a longitudinal surveillance study. *The Lancet*. 2019;
499 doi:10.1016/S0140-6736(18)33005-8
- 500 23. Sigaúque B, Moiane B, Massora S, Pimenta F, Verani JR, Mucavele H, et al. Early Declines
501 in Vaccine Type Pneumococcal Carriage in Children Less Than 5 Years Old After
502 Introduction of 10-valent Pneumococcal Conjugate Vaccine in Mozambique. *The*
503 *Pediatric Infectious Disease Journal*. 2018;37: 1054.
504 doi:10.1097/INF.0000000000002134
- 505 24. Usuf E, Bottomley C, Bojang E, Cox I, Bojang A, Gladstone R, et al. Persistence of
506 Nasopharyngeal Pneumococcal Vaccine Serotypes and Increase of Nonvaccine
507 Serotypes Among Vaccinated Infants and Their Mothers 5 Years After Introduction of
508 Pneumococcal Conjugate Vaccine 13 in The Gambia. *Clin Infect Dis*. 2019;68: 1512–
509 1521. doi:10.1093/cid/ciy726
- 510 25. Klugman KP, Rodgers GL. Population versus individual protection by pneumococcal
511 conjugate vaccination. *The Lancet*. 2019;393: 2102–2104. doi:10.1016/S0140-
512 6736(19)30039-X
- 513 26. Dwyer-Lindgren L, Cork MA, Sligar A, Steuben KM, Wilson KF, Provost NR, et al. Mapping
514 HIV prevalence in sub-Saharan Africa between 2000 and 2017. *Nature*. 2019;570: 189.
515 doi:10.1038/s41586-019-1200-9
- 516 27. UNAIDS. Global HIV & AIDS databook [Internet]. Geneva, Switzerland: Joint United
517 Nations Programme on HIV/AIDS; 2017 pp. 1–248. Available:
518 [https://www.unaids.org/sites/default/files/media_asset/20170720_Data_book_2017_](https://www.unaids.org/sites/default/files/media_asset/20170720_Data_book_2017_en.pdf)
519 [en.pdf](https://www.unaids.org/sites/default/files/media_asset/20170720_Data_book_2017_en.pdf)
- 520 28. Thindwa D, Pinsent A, Ojal J, Gallagher KE, French N, Flasche S. Vaccine strategies to
521 reduce the burden of pneumococcal disease in HIV-infected adults in Africa. *Expert*
522 *Review of Vaccines*. Taylor & Francis; 2020;0: 1–8.
523 doi:10.1080/14760584.2020.1843435
- 524 29. Cohen C, McMorrow M, Martinson NA, Kahn K, Treurnicht FK, Moyes J, et al. Cohort
525 Profile: a Prospective Household cohort study of Influenza, Respiratory Syncytial virus,
526 and other respiratory pathogens community burden and Transmission dynamics in
527 South Africa (PHIRST), 2016-2018. medRxiv. Cold Spring Harbor Laboratory Press; 2021;
528 2021.01.06.21249313. doi:10.1101/2021.01.06.21249313
- 529 30. Cohen C, Kleynhans J, Moyes J, McMorrow ML, Treurnicht FK, Hellferscee O, et al.
530 Asymptomatic transmission and high community burden of seasonal influenza in an
531 urban and a rural community in South Africa, 2017–18 (PHIRST): a population cohort
532 study. *The Lancet Global Health*. 2021;9: e863–e874. doi:10.1016/S2214-
533 109X(21)00141-8
- 534 31. Blaschke AJ. Interpreting Assays for the Detection of *Streptococcus pneumoniae*. *Clin*
535 *Infect Dis*. Oxford Academic; 2011;52: S331–S337. doi:10.1093/cid/cir048

- 536 32. Shiri T, Auranen K, Nunes MC, Adrian PV, van Niekerk N, de Gouveia L, et al. Dynamics of
537 Pneumococcal Transmission in Vaccine-Naïve Children and Their HIV-infected or HIV-
538 uninfected Mothers During the First 2 Years of Life. *Am J Epidemiol.* 2013;178: 1629–
539 1637. doi:10.1093/aje/kwt200
- 540 33. Cox DR, Miller HD. *The Theory of Stochastic Processes.* CRC Press; 1977.
- 541 34. Jackson C. Multi-State Models for Panel Data: The msm Package for R. *Journal of*
542 *Statistical Software.* 2011;38: 1–28. doi:10.18637/jss.v038.i08
- 543 35. Lipsitch M, Abdullahi O, D’Amour A, Xie W, Weinberger D, Tchetgen ET, et al. Estimating
544 Rates of Carriage Acquisition and Clearance and Competitive Ability for Pneumococcal
545 Serotypes in Kenya With a Markov Transition Model. *Epidemiology.* 2012;23: 510–519.
546 doi:10.1097/EDE.0b013e31824f2f32
- 547 36. Melegaro A, Gay NJ, Medley GF. Estimating the transmission parameters of
548 pneumococcal carriage in households. *Epidemiol Infect.* 2004;132: 433–441.
- 549 37. Melegaro A, Choi Y, Pebody R, Gay N. Pneumococcal Carriage in United Kingdom
550 Families: Estimating Serotype-specific Transmission Parameters from Longitudinal
551 Data. *Am J Epidemiol.* 2007;166: 228–235. doi:10.1093/aje/kwm076
- 552 38. Jones E, Epstein D, García-Mochón L. A Procedure for Deriving Formulas to Convert
553 Transition Rates to Probabilities for Multistate Markov Models. *Medical Decision*
554 *Making.* 2017;37: 779–789. doi:10.1177/0272989X17696997
- 555 39. Jackson CH, Sharples LD. Hidden Markov models for the onset and progression of
556 bronchiolitis obliterans syndrome in lung transplant recipients. *Statistics in Medicine.*
557 2002;21: 113–128. doi:10.1002/sim.886
- 558 40. Jackson CH, Sharples LD, Thompson SG, Duffy SW, Couto E. Multistate Markov models
559 for disease progression with classification error. *Journal of the Royal Statistical Society:*
560 *Series D (The Statistician).* 2003;52: 193–209. doi:10.1111/1467-9884.00351
- 561 41. Bureau A, Shiboski S, Hughes JP. Applications of continuous time hidden Markov models
562 to the study of misclassified disease outcomes. *Statistics in Medicine.* 2003;22: 441–
563 462. doi:10.1002/sim.1270
- 564 42. Cooper B, Lipsitch M. The analysis of hospital infection data using hidden Markov
565 models. *Biostatistics.* 2004;5: 223–237. doi:10.1093/biostatistics/5.2.223
- 566 43. Satten GA, Longini IM. Markov Chains With Measurement Error: Estimating the ‘True’
567 Course of a Marker of the Progression of Human Immunodeficiency Virus Disease.
568 *Journal of the Royal Statistical Society Series C (Applied Statistics).* 1996;45: 275–309.
569 doi:10.2307/2986089
- 570 44. McClintock BT, Langrock R, Gimenez O, Cam E, Borchers DL, Glennie R, et al. Uncovering
571 ecological state dynamics with hidden Markov models. *Ecology Letters.* 2020;23: 1878–
572 1903. doi:https://doi.org/10.1111/ele.13610

- 573 45. Powell MJD. The BOBYQA algorithm for bound constrained optimization without
574 derivatives. Cambridge; 2009. p. 39. Available:
575 http://www.damtp.cam.ac.uk/user/na/NA_papers/NA2009_06.pdf
- 576 46. Viterbi A. Error bounds for convolutional codes and an asymptotically optimum
577 decoding algorithm. IEEE Transactions on Information Theory. 1967;13: 260–269.
578 doi:10.1109/TIT.1967.1054010
- 579 47. Stone M. An Asymptotic Equivalence of Choice of Model by Cross-Validation and
580 Akaike’s Criterion. Journal of the Royal Statistical Society Series B (Methodological).
581 1977;39: 44–47.
- 582 48. R Core Team (2018). R: A language and environment for statistical computing. R
583 Foundation for Statistical Computing, Vienna, Austria. [Internet]. [cited 28 May 2019].
584 Available: <https://www.r-project.org/>
- 585 49. Nunes MC, Shiri T, van Niekerk N, Cutland CL, Groome MJ, Koen A, et al. Acquisition of
586 *Streptococcus pneumoniae* in Pneumococcal Conjugate Vaccine-naïve South African
587 Children and Their Mothers. The Pediatric Infectious Disease Journal. 2013;32: e192.
588 doi:10.1097/INF.0b013e31828683a3
- 589 50. Heinsbroek E, Tafatatha T, Chisambo C, Phiri A, Mwiba O, Ngwira B, et al. Pneumococcal
590 Acquisition Among Infants Exposed to HIV in Rural Malawi: A Longitudinal Household
591 Study. Am J Epidemiol. 2016;183: 70–78. doi:10.1093/aje/kwv134
- 592 51. Turner P, Turner C, Jankhot A, Helen N, Lee SJ, Day NP, et al. A Longitudinal Study of
593 *Streptococcus pneumoniae* Carriage in a Cohort of Infants and Their Mothers on the
594 Thailand-Myanmar Border. PLOS ONE. Public Library of Science; 2012;7: e38271.
595 doi:10.1371/journal.pone.0038271
- 596 52. Hussain M, Melegaro A, Pebody RG, George R, Edmunds WJ, Talukdar R, et al. A
597 longitudinal household study of *Streptococcus pneumoniae* nasopharyngeal carriage in
598 a UK setting. Epidemiology & Infection. 2005;133: 891–898.
599 doi:10.1017/S0950268805004012
- 600 53. Althouse BM, Hammitt LL, Grant L, Wagner BG, Reid R, Larzelere-Hinton F, et al.
601 Identifying transmission routes of *Streptococcus pneumoniae* and sources of
602 acquisitions in high transmission communities. Epidemiology and Infection. 2017;145:
603 2750–2758. doi:10.1017/S095026881700125X
- 604 54. Abdullahi O, Karani A, Tigoi CC, Mugo D, Kungu S, Wanjiru E, et al. Rates of Acquisition
605 and Clearance of Pneumococcal Serotypes in the Nasopharynges of Children in Kilifi
606 District, Kenya. J Infect Dis. 2012;206: 1020–1029. doi:10.1093/infdis/jis447
- 607 55. Flasche S, Lipsitch M, Ojal J, Pinsent A. Estimating the contribution of different age
608 strata to vaccine serotype pneumococcal transmission in the pre vaccine era: a
609 modelling study. BMC Medicine. 2020;18. doi:10.1186/s12916-020-01601-1

- 610 56. Wyllie AL, Warren JL, Regev-Yochay G, Givon-Lavi N, Dagan R, Weinberger DM. Serotype
611 Patterns of Pneumococcal Disease in Adults Are Correlated With Carriage Patterns in
612 Older Children. *Clinical Infectious Diseases*. 2020; doi:10.1093/cid/ciaa1480
- 613 57. Endo A, Uchida M, Kucharski AJ, Funk S. Fine-scale family structure shapes influenza
614 transmission risk in households: Insights from primary schools in Matsumoto city,
615 2014/15. *PLOS Computational Biology*. Public Library of Science; 2019;15: e1007589.
616 doi:10.1371/journal.pcbi.1007589
- 617 58. Weinberger DM, Pitzer VE, Regev-Yochay G, Givon-Lavi N, Dagan R. Association Between
618 the Decline in Pneumococcal Disease in Unimmunized Adults and Vaccine-Derived
619 Protection Against Colonization in Toddlers and Preschool-Aged Children. *Am J*
620 *Epidemiol*. 2019;188: 160–168. doi:10.1093/aje/kwy219
- 621 59. Lees JA, Croucher NJ, Goldblatt D, Nosten F, Parkhill J, Turner C, et al. Genome-wide
622 identification of lineage and locus specific variation associated with pneumococcal
623 carriage duration. In: *eLife* [Internet]. 25 Jul 2017 [cited 24 Jun 2019].
624 doi:10.7554/eLife.26255
- 625 60. Abdullahi O, Wanjiru E, Musyimi R, Glass N, Scott JAG. Validation of Nasopharyngeal
626 Sampling and Culture Techniques for Detection of *Streptococcus pneumoniae* in
627 Children in Kenya. *Journal of Clinical Microbiology*. American Society for Microbiology
628 *Journals*; 2007;45: 3408–3410. doi:10.1128/JCM.01393-07
- 629
- 630

Table 1. Baseline demographic and clinical characteristics of children and adults who were followed up twice weekly for ten months for nasopharynx swabbing for pneumococcal carriage in South African households between 2016 and 2018.

Description	Total N=1,684	Younger children <5 years n=279 (16.6%)	Older children 5-17 years n=679 (40.3%)	Adults ≥18 years n=726 (43.1%)
Mean age (SD)	22.1 (±19.8)	2.2 (±1.3)	10.5 (±3.7)	40.5 (±16.7)
Study site				
Agincourt (rural)	849 (50.4)	171 (61.3)	376 (55.4)	302 (41.6)
Klerksdorp (semi-urban)	835 (49.6)	108 (38.7)	303 (44.6)	424 (58.4)
Sex				
Female	1,009 (59.9)	137 (49.1)	367 (54.1)	505 (69.6)
Male	675 (40.1)	142 (50.9)	312 (45.9)	221 (30.4)
HIV status				
Negative (-)	1,379 (84.7)	256 (98.5)	634 (95.3)	489 (69.6)
Positive (+)	249 (15.3)	4 (1.5)	31 (4.7)	214 (30.4)
Viral-load based ART status [†]				
Not on ART	93 (40.8)	1 (50.0)	13 (52.0)	79 (39.3)
On ART	135 (59.2)	1 (50.0)	12 (48.0)	122 (60.7)
Self-reported ART status				
Not on ART	30 (13.2)	0 (0.0)	1 (3.8)	29 (14.5)
On ART	198 (86.8)	2 (100.0)	25 (96.2)	171 (85.5)
Mean CD4 count (SD)	673 (±430)	1,210 (±13.4)	857 (±418)	645 (±426)
CD4+ cell count [‡]				
Low	49 (22.8)	0 (0.0)	10 (43.5)	39 (20.5)
High	166 (77.2)	2 (100.0)	13 (56.5)	151 (79.5)
Living with ≥1 HIV+ adults				
No	818 (48.7)	133 (47.8)	346 (51.1)	339 (46.9)
Yes	860 (51.3)	145 (52.2)	331 (48.9)	384 (53.1)
PCV13 doses received [#]				
At 6 weeks	227 (98.3)	227 (98.3)	N/A	N/A
At 14 weeks	225 (97.4)	225 (97.4)	N/A	N/A
At 9 months	216 (93.5)	216 (93.5)	N/A	N/A
Smoking (≥18 years)				
No	505 (69.6)	N/A	N/A	505 (69.6)
Yes	221 (30.4)	N/A	N/A	221 (30.4)
Alcohol use (≥18 years)				
No	417 (57.4)	N/A	N/A	417 (57.4)
Yes	309 (42.6)	N/A	N/A	309 (42.6)

[†] ART use status based on viral load results (on ART = Undetected; Not on ART = <20 copies per ml)

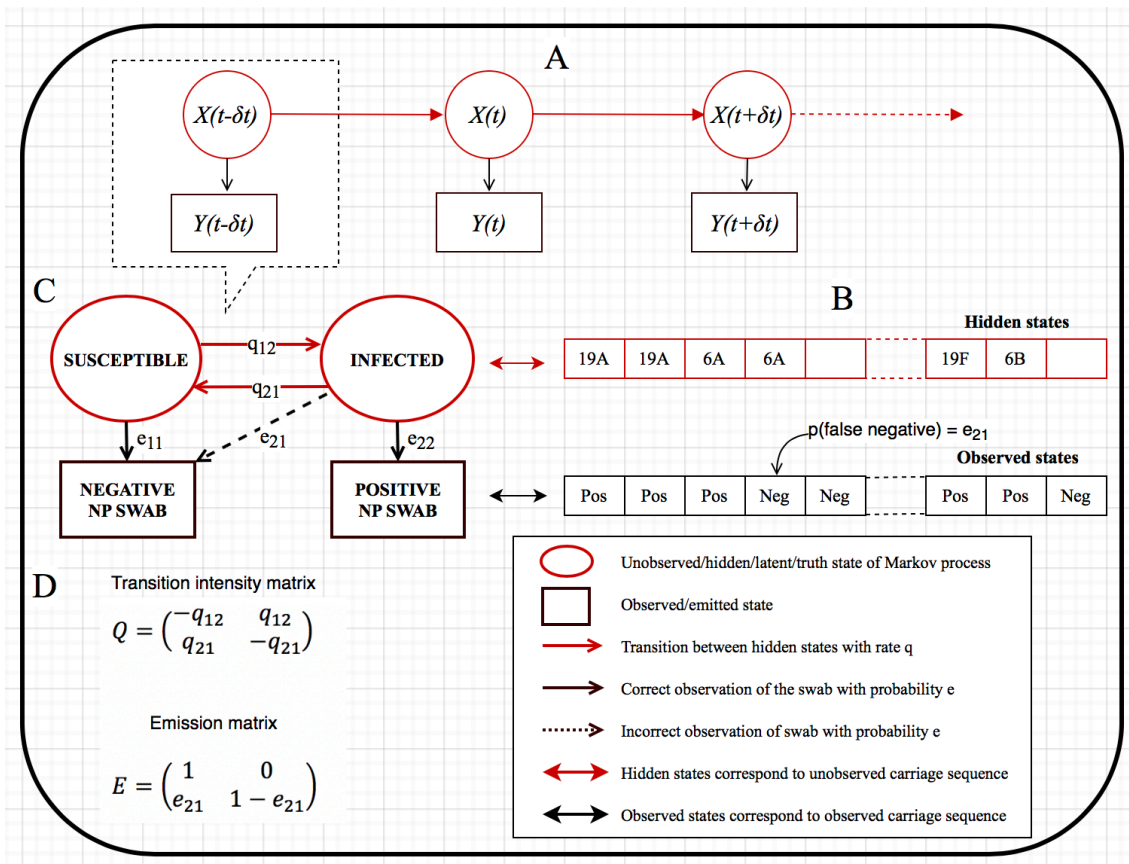
[‡] Low CD4+ count ≤350 cells/mm³ and high CD4+ count >350 cells/mm³ in adults, and low CD4+ count ≤750 cells/mm³ and high CD4+ count >750 cells/mm³ in children, in HIV-INFECTED only

[#] Pneumococcal conjugate vaccine (PCV13) vaccination status in younger children from available records
Standard deviation (SD)

N/A not applicable

Table 2. Effects of included covariates on pneumococcal acquisition and clearance rates estimated in the hidden Markov model.

Description	Hazard Ratio (95%CI)[‡]
<u>Pneumococcal carriage acquisition</u>	
Age in years (y)	
Adult, ≥18y	Reference
Older child, 5-17y	1.15 (1.08-1.23)
Younger child, <5y	1.52 (1.38-1.68)
HIV status	
Negative	Reference
Positive	0.95 (0.87- 1.04)
Children living with ≥1 HIV-infected adults	
No	Reference
Yes	0.95 (0.91- 1.01)
Place of carriage exposure	
Community	Reference
Within household	1.80 (1.68- 1.93)
Household size	
<6 members	Reference
6-10 members	1.05 (1.00-1.10)
11+ members	1.41 (1.24-1.60)
<u>Pneumococcal carriage clearance</u>	
Age in years (y)	
Adult, ≥18y	Reference
Older child, 5-17	0.34 (0.31-0.36)
Younger child, <5y	0.10 (0.09-0.12)
HIV status	
Negative	Reference
Positive	0.52 (0.46-0.59)
Antibiotic use	
No	Reference
Yes	1.47 (0.67-3.25)
Viral load-based ART status [†]	
Not on ART	Reference
On ART	1.29 (1.13-1.47)
† ART use status based on viral load results	
‡ 95% confidence interval (95%CI)	



633

634

635

636

637

638

639

640

641

642

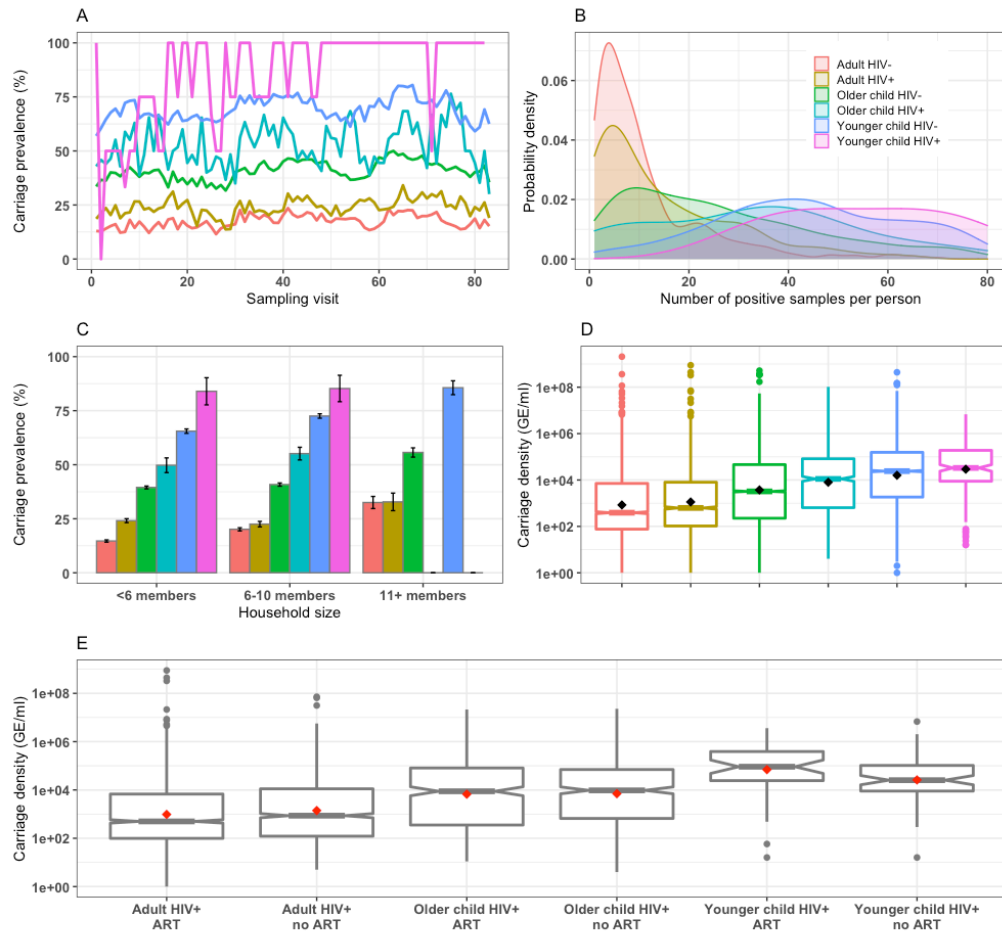
643

644

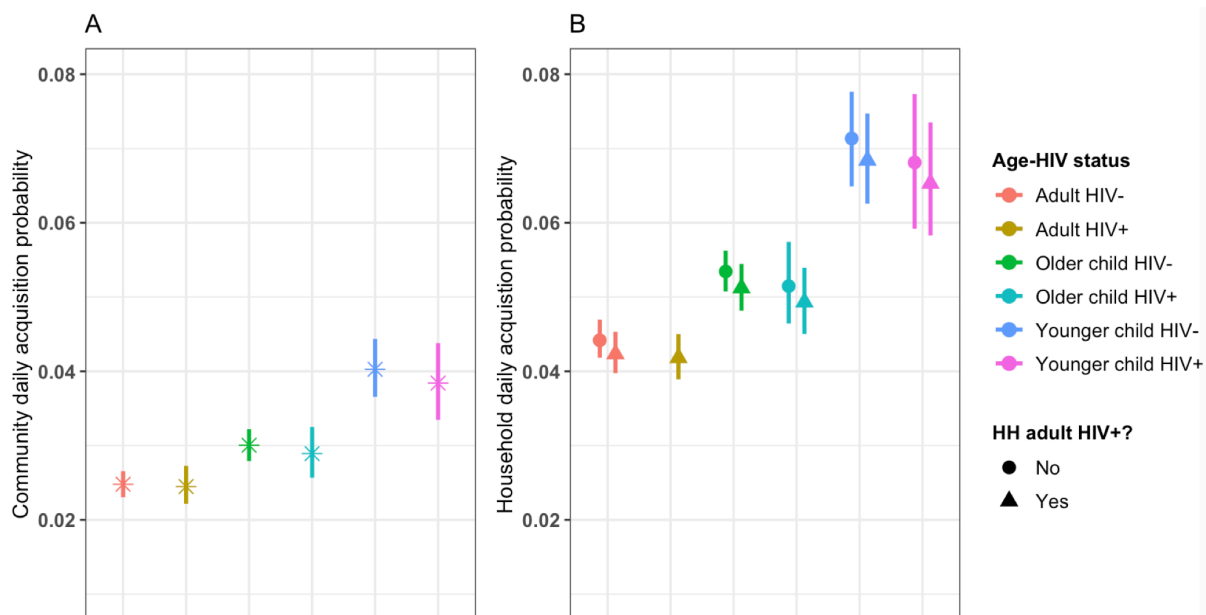
645

646

Figure 1. Susceptible-infected-susceptible (SIS) hidden Markov model schemas of pneumococcal carriage dynamics in South African households between 2016-2018. Continuous-time time-homogeneous hidden Markov model where $X(t)$ represents hidden states, and $Y(t)$ observed states, and in which $Y(t)$ is conditionally independent given $X(t)$ and the Markov property holds (A). Pneumococcal nasopharynx (NP) carriage sequence of a specified individual representing hidden and observed states, with a probability that an individual truly carrying a pneumococcal serotype may be detected negative by a real-time quantitative polymerase chain reaction test (B). An SIS hidden Markov model structure that captures a snapshot of part A and carriage sequence of part B in order to estimate transition rates and probability of misclassification/false negative (C). Transition intensity matrix, Q , and emission matrix, E , respectively capture the SIS model transition rates and emission or misclassification probability in part C to compute the maximum likelihood estimates of transition intensities and misclassification probability (D).



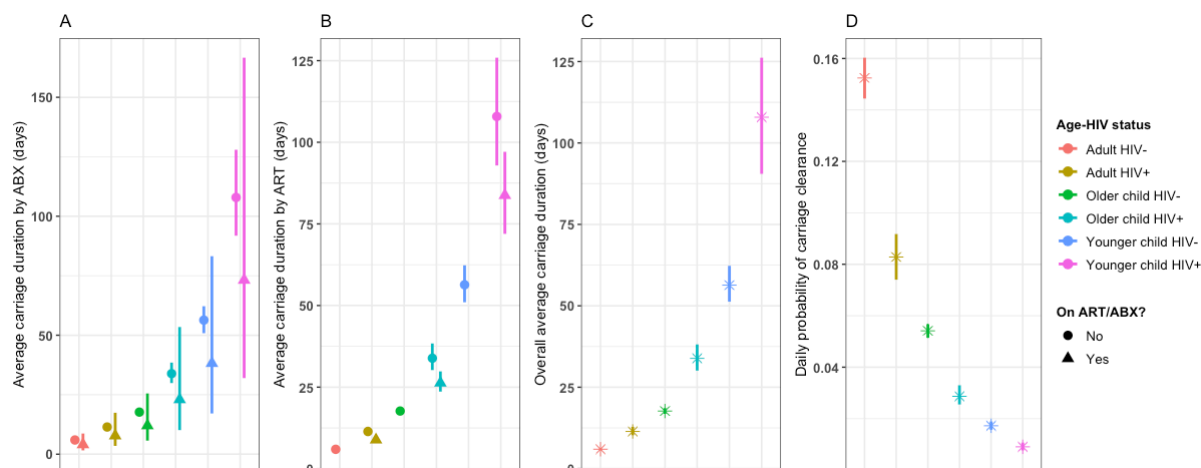
647
 648 Figure 2. Human immunodeficiency virus (HIV)-stratified pneumococcal carriage dynamics in
 649 younger children (<5 years-old), older children (5-17 years-old) and adults (≥ 18 years-old) in South
 650 African households between 2016-2018. Age and HIV-stratified pneumococcal carriage prevalence
 651 by different nasopharyngeal sampling visits (A), the likelihood of detecting pneumococcal carriage
 652 during visits (B), pneumococcal carriage prevalence by household sizes with 95% confidence
 653 intervals (CI) (C) and carriage densities with mean (black diamond), median and associated 95%CI of
 654 median, 25th and 75th percentiles, minimum and maximum, and outlier where carriage density is
 655 measured as genome equivalents per millilitre (GE/ml) (D). Age and antiretroviral therapy (ART)
 656 stratified carriage density with mean (red diamonds), median and associated 95%CI of median, 25th
 657 and 75th percentiles, minimum and maximum, and outlier (notched boxplot) (E)
 658



659

660 Figure 3. Community and within household (HH) acquisitions of pneumococcal carriage in younger
661 children (<5 years-old), older children (5-17 years-old) and adults (≥18 years-old) in South African
662 households between 2016-2018. Age and human immunodeficiency virus (HIV) stratified estimates
663 of community carriage acquisition probability per day (A) and within household carriage acquisition
664 probability per day over the total follow-up period (B), comparing household without HIV-infected
665 adult(s) (HIV-) to households with HIV-infected adult(s) (+).

666



667

668 Figure 4. Duration of pneumococcal carriage in younger children (<5 years-old), older children (5-17

669 years-old) and adults (≥ 18 years-old) in South African households between 2016-2018. Age and

670 human immunodeficiency virus (HIV) stratified average carriage duration in days comparing

671 individuals on antibiotics (ABX) (triangular shape) to those not on ABX (circular shape) (A), and

672 individuals on antiretroviral therapy (ART) (triangle shape) to those not on ART (circle shape) (B).

673 Age and HIV stratified overall average carriage duration in days (C). Age and HIV stratified daily

674 probability of carriage clearance (D).