

1
2
3
4
5
6
7
8
9
10
11
12
13
14
15
16
17
18
19
20
21
22
23
24
25
26
27
28
29
30
31
32
33
34
35
36
37

Full title:

Infection control, occupational and public health measures including mRNA-based vaccination against SARS-CoV-2 infections to protect healthcare workers from variants of concern: a 14-month observational study using surveillance data

Short title:

Protecting health workers: Non-pharmaceutical interventions and vaccine effectiveness

Annalee Yassi^{1, 2, 3}, Jennifer M. Grant^{2, 3, 4, 5}, Karen Lockhart¹, Stephen Barker¹, Stacy Sprague⁶, Arnold I. Okpani^{1, 2}, Titus Wong^{3, 4, 5}, Patricia Daly^{1, 7}, William Henderson^{8, 9}, Stan Lubin², Chad Kim Sing^{10, 11}

Affiliations:

1. School of Population and Public Health (SPPH), University of British Columbia (UBC), Vancouver, British Columbia (BC), Canada
2. Physician Occupational Safety and Health, Vancouver Coastal Health (VCH), Vancouver, BC, Canada
3. Department of Pathology and Laboratory Medicine, Vancouver Coastal Health (VCH)
4. Division of Medical Microbiology and Infection Prevention, VCH
5. Division of Medical Microbiology, Department of Laboratory Medicine and Pathology, UBC
6. Employee Safety, Health and Wellness, VCH
7. Public Health, VCH
8. Department of Medicine, UBC
9. Vancouver Acute, Emergency Operations Centre, VCH
10. Medicine, Quality and Safety, VCH
11. Department of Emergency Medicine, UBC

Corresponding author:

Dr. Annalee Yassi
430-2206 East Mall, UBC
Vancouver, BC, V6T 1Z3
Annalee.Yassi@ubc.ca

Word count: 3476

Number of tables and figures: 7

38 Abstract

39 **Background:** We evaluated measures to protect healthcare workers (HCWs) in Vancouver,
40 Canada, where variants of concern (VOC) went from <1% in February 2021 to >92% in mid-
41 May. Canada has amongst the longest periods between vaccine doses worldwide, despite
42 Vancouver having the highest P.1 variant rate outside Brazil.

43 **Methods:** With surveillance data since the pandemic began, we tracked laboratory-confirmed
44 SARS-CoV-2 infections, positivity rates, and vaccine uptake in all 25,558 HCWs in Vancouver
45 Coastal Health, by occupation and subsector, and compared to the general population. We
46 employed Cox regression modelling adjusted for age and calendar-time to calculate vaccine
47 effectiveness (VE) against SARS-CoV-2 in fully vaccinated (≥ 7 days post-second dose),
48 partially vaccinated (14 days post vaccine) and unvaccinated HCWs; we also compared with
49 unvaccinated community members of the same age-range.

50 **Findings:** Only 3.3% of our HCWs became infected, mirroring community rates, with peak
51 positivity of 9.1%, compared to 11.8% in the community. As vaccine coverage increased,
52 SARS-CoV-2 infections declined significantly in HCWs, despite a surge with predominantly
53 VOC; unvaccinated HCWs had an infection rate of 1.3/10,000 person-days compared to 0.89 for
54 HCWs post first dose, and 0.30 for fully vaccinated HCWs. VE compared to unvaccinated
55 HCWs was 37.2% (95% CI: 16.6-52.7%) 14 days post-first dose, 79.2% (CI: 64.6-87.8%) 7 days
56 post-second dose; one dose provided significant protection against infection until at least day 42.
57 Compared with community infection rates, VE after one dose was 54.7% (CI: 44.8-62.9%); and
58 84.8% (CI: 75.2-90.7%) when fully vaccinated.

59 **Interpretation:** Predominantly droplet-contact precautions, with N95s required for aerosol
60 generating medical procedures and available as needed according to point-of-care risk
61 assessment, has been a highly effective approach to preventing occupational infection in HCWs,
62 with one dose of mRNA vaccination further reducing infection risk despite VOC and
63 transmissibility concerns. Delaying second doses to allow more widespread vaccination against
64 severe disease, with strict public health, occupational health and infection control measures, has
65 been effective in protecting the healthcare workforce.

66

67 **Introduction:**

68 Healthcare workers (HCWs) worldwide face occupational risk of infectious disease (1). COVID-
69 19 has highlighted this risk, particularly in the early stages of the pandemic when personal
70 protective equipment (PPE) was lacking in many settings (2, 3), compounding the mental health
71 impacts of working on the frontline (4, 5). In many settings globally, HCWs have continued to
72 provide patient care often in exhausting long shifts, and amidst fear of becoming infected and
73 transmitting to family, friends, patients and co-workers, sometimes with new responsibilities and
74 facing emotionally fraught decisions. Tragic deaths of medics and front-line healthcare workers
75 continue to occur across the globe, despite the recognition that protecting the healthcare
76 workforce is a prerequisite to the safety of patients and the health of the population at large.

77 Infection rates have been relatively low in the Canadian healthcare workforce (6) compared to
78 elsewhere (7, 8), with a positivity rate of 6.5% by September 2020, no higher than for the general
79 Canadian population. Nonetheless, with growing concern about the possibility of greater
80 airborne transmission (9, 10), especially in the context of variants of concern (VOC), vigilance
81 regarding protecting HCWs remains important in Canada, as it is worldwide (11). While
82 combinations of PPE and other non-pharmaceutical interventions are thought to be useful, there
83 is increasing consensus that the most effective means of protecting HCWs is vaccination. Just
84 how effective the various non-pharmaceutical interventions have been, and what the implications
85 are for their ongoing application now that vaccines are available, are still topics of important
86 debate. Moreover, while it is increasingly well-established that the commonly approved vaccines
87 protect against severe illness (12), there has been no real-world data to date on the performance
88 of vaccines against the P.1 variant, and the issues of how long a single dose of a two-series
89 vaccine regiment remains protective against infection beckons further research.

90 HCWs were amongst the first groups to be vaccinated in the province of British Columbia (BC)
91 in Canada, and thus serve not only as a population to be studied with respect to their own
92 protection but also as a sentinel population to assess vaccine effectiveness, compared to the
93 general population. During this period, the dominant variants changed from <1% VOC to >92%,
94 with the B.1.1.7 and P.1 variants dominating; Vancouver, BC was documented at that time as
95 having the highest rate of P.1 variant outside of Brazil (13).

96 This study therefore had two main objectives. First, we tracked the risk of COVID-19 infections
97 in our cohort of HCWs compared to the general population since the beginning of the pandemic,
98 examining risk by subsector and occupational group, to assess the effectiveness of the
99 occupational precautions implemented to date. Second, we sought to examine the impact of the
100 mRNA vaccine – including delaying the second dose – on COVID-19 infection in HCWs in a
101 jurisdiction with high levels of the P.1 variant(13), reported to be 2.5-times more transmissible
102 than the wild variant (14).

103 **Methods:**

104 **Setting and Study Population:**

105 British Columbia, as all Canadian provinces, offers universal healthcare coverage through a
106 single-payer system, with all residents offered a Personal Health Number (PHN); non-permanent
107 residents, including temporary foreign workers, refugees and undocumented immigrants are also
108 able to obtain testing and vaccination free of charge, with a numeric identifier assigned to them
109 for COVID-19 testing and vaccination purposes. Vancouver Coastal Health (VCH) and Fraser
110 Health Authority (FHA) cover the greater Vancouver metropolitan area in BC. VCH provides all
111 laboratory, community, hospital and long-term care (LTC) services to more than one million

112 people. Public health measures during the pandemic included COVID-19 PCR test turnaround
113 times of less than 24-hours, isolation within 24 hours of a positive test, and prompt isolation of
114 close contacts for 10 days after symptom onset (20 days for hospitalized cases), as well as limits
115 on travel, indoor activities and outdoor gatherings as needed to keep the caseload down and
116 avoid pressure on the healthcare system.

117 Infection prevention and control (IPAC) measures starting March 29, 2020, required HCWs to
118 wear a medical mask (ASTM level 1, 2 or 3), eye protection and gloves for all direct patient care,
119 in addition to droplet and contact precautions when within 2 meters of COVID-19 suspect or
120 confirmed patients. Use of an N95 or equivalent respirator was permitted based on a HCW's
121 point-of-care risk assessment (PCRA) and was required when an aerosol generating medical
122 procedure (AGMP) was performed on a positive or suspected COVID-19 patient. From
123 November 4, 2020, all visitors and HCWs were required to wear a medical mask in all common
124 areas. Cotton or non-approved masks were not permitted and double masking was strongly
125 discouraged. There were no PPE disruptions during the pandemic, although extended use of
126 facial PPE of up to 4 hours was encouraged. IPAC personnel ensured optimal administrative and
127 engineering controls, ongoing staff instruction and rapid response to outbreaks. PPE measures
128 were communicated in regular staff forums and bulletins plus targeted forums for medical staff.

129 In addition to the existing provincial occupational health and local Employee Health and Safety
130 services, VCH established the Physicians Occupational Safety and Health (POSH) unit to service
131 medical staff, providing prompt access to expert advice, as well as exposure notifications and
132 assessments, and contact tracing for this often harder-to-reach group. POSH also conducts
133 overall surveillance of HCW infection and vaccine rates within VCH, promoting vaccination and
134 sending reminders to medical staff when eligible for vaccination with first or second dose.

135 Immunizations against COVID-19 began on December 15, 2020. Dose 1 was given first to LTC
136 staff, residents and essential visitors, followed by highest risk acute HCWs (Emergency room,
137 Intensive care unit and COVID medical unit staff) in late December 2020 and early 2021.
138 Initially dose 2 was given 35 days after dose 1. The inter-dose interval was lengthened to 42 days
139 in February 2020 then to 4 months (16 weeks) in early March 2021 in an effort to protect a
140 greater number of people from severe disease and death (15) at a time of limited vaccine supply.
141 By the end of the observation period for this study (May 13, 2021), almost all HCWs in this
142 jurisdiction had been offered at least a single dose of vaccination, with some workers receiving 2
143 doses. Virtually all HCWs were vaccinated with either the Pfizer-BioNTech (93.3%) or Moderna
144 (6.6%) COVID-19 vaccine (mRNA-1273). Vaccination of the general public started in February
145 2021, beginning with homeless and unstably housed, older age-groups and the clinically
146 extremely vulnerable, as well as Indigenous nations, then essential workers and later high
147 prevalence areas, working through the BC ethical framework (16).

148 Our HCW cohort includes all active healthcare employees (nurses, care aids/licensed practical
149 nurses, allied health professionals, support staff, administrators, and other employees) as well as
150 contracted medical staff (physicians, nurse practitioners, midwives, dentists, other medical staff)
151 who worked in VCH between March 15, 2020 and May 13, 2021. Non-medical contractors (e.g.
152 cleaning and food service staff) were not included in the database.

153 Database and Analysis

154 All COVID-19 vaccines provided in BC are recorded in a provincial database by PHN and other
155 identifiers, regardless of immunization site. COVID-19 testing and results of PCR are updated
156 daily, and used for prompt contact tracing and public health surveillance, in conjunction with the
157 BC Centre for Disease Control (BCCDC). Data on HCW infection rates and vaccinations are

158 also extracted daily to populate the occupational health database for HCWs, which includes their
159 birthdate, sex, occupation and work location, among other variables such as respirator fit-testing
160 results. Data extracted from this database are used for regular occupational health surveillance of
161 all VCH HCW COVID-19 infections as well as monitoring and promoting vaccine uptake.

162 Community COVID-19 values and vaccination rates were collected from BCCDC, and the
163 occupational health database was used for HCW infections and vaccination data. We plotted the
164 COVID-19 rate in the VCH health workforce compared to the general population of similar age
165 range, calculated over a moving 7-day period from March 1, 2020 to May 13, 2021. The
166 population denominator was retrieved from Statistics Canada (17) grouped by age and health
167 service regions. The data were merged, summarized and plotted using R (version 4.0.5). The
168 combined data from VCH and FHA were used for community comparison for VCH HCWs, as
169 VCH staff live in the larger Vancouver area which spans both health authorities.

170 To assess vaccine effectiveness against COVID-19 infections, all 25,558 VCH healthcare
171 workers were classified according to vaccination status over the period of observation. For the
172 150-day interval from December 15, 2020 to May 13, 2021, each HCW had the period stratified
173 into days unvaccinated, days vaccinated with one dose, and days vaccinated with two doses,
174 allowing 14 or 7 days for vaccine effect for one or two doses respectively, to allow comparison
175 with similar studies (18) assessing vaccine effectiveness. The 442 VCH healthcare workers who
176 tested positive prior to December 15, 2020 were excluded from further analysis. A Cox
177 regression model was fitted to the data adjusting for age and calendar time, and the proportional
178 hazards assumption was verified.

179 Results were further assessed based on care sector and occupational categories. For the
180 cumulative incidence plot, a HCW counted as positive the day that they tested positive or would

181 be right-censored 14 days after the first dose or 7 days after the second dose if they did not test
182 positive prior to the end of the period (May 13, 2021). The unvaccinated classification had an
183 origin time ($t=0$) of December 15, 2020; the one dose classification had an origin time 14 days
184 after the first dose; and the two-dose classification had an origin time 7 days after the second
185 dose. A log-rank test was performed to test whether there was a significant difference between
186 the incidence curves.

187 Ethical approval was provided by the Behavioural Ethics Review Board at the University of
188 British Columbia under certificate H21-01138.

189 **Results:**

190 The rates of positive COVID-19 PCR tests per 100,000 population are shown by date in Figure
191 1, along with major points of interventions to protect HCWs. It can be seen that other than very
192 early in the pandemic, before PPE guidance was provided and widely implemented, infection
193 rates in HCWs paralleled those of the population at large, dramatically decreasing below that of
194 the community at large as vaccination of HCWs was quickly rolled-out at a faster pace than in
195 the general population. As the third surge, driven in part by a high proportion of the P.1 variant,
196 was quickly brought under control through public health interventions including more
197 widespread vaccination coverage of the population, the community rates fell, but HCW rates still
198 remained well below those of the background population.

199 To account for preferential access to testing by HCWs during the early period of the pandemic,
200 Figure 2 shows the positivity rate in HCWs as compared to the background population,
201 suggesting that the high peak in HCW at the beginning of the pandemic shown in Figure 1 is
202 likely due more to easier access of HCWs to COVID-19 testing. Positivity rates for our cohort of

203 HCWs during the first wave (March 1- June 1, 2020) were 2.35% (95% CI, 1.94-2.84) while
 204 population rates were 2.27% (95% CI, 2.17-2.36). These figures similarly show a flat risk for
 205 HCWs, despite a community surge near the end of this observation period.

206 Insert Figure 1

207 Insert Figure 2

208 By the end of the observation period, 22,118 (86.5%) of HCWs had received at least one dose of
 209 vaccine, 7,328 (28.7%) had received two doses, with an average time between doses of 46.9 days
 210 (SD 18.7), leaving 3,440 (13.5%) unvaccinated. Table 1 shows COVID-19 rates and vaccine
 211 status for active employees, by occupation at the end of our observation period.

212 **Table 1 – COVID-19 infection rate and vaccine status for VCH HCWs by occupation by May 13,**
 213 **2021**

Occupation (n)	Cumulative COVID-19 rate n (%)	Fully vaccinated n (%)	Partially vaccinated n (%)	Unvaccinated n (%)
Nurses (7,637)	247 (3.2%)	2,274 (29.8%)	4,433 (58.0%)	930 (12.2%)
LPN / Care Aide (5,759)	299 (5.2%)	2,482 (43.1%)	2,347 (40.8%)	930 (16.1%)
Administration (4,314)	114 (2.6%)	405 (9.4%)	3,137 (72.7%)	772 (17.9%)
Allied Health (3,906)	85 (2.2%)	820 (21.0%)	2,587 (66.2%)	499 (12.8%)
Medical staff (3,182)	68 (2.1%)	1,353 (42.5%)	1,700 (53.4%)	129 (4.1%)
Support staff (827)	35 (4.2%)	120 (14.5%)	548 (66.3%)	159 (19.2%)
Other or Unknown (950)	27 (2.8%)	210 (22.1%)	609 (64.1%)	131 (13.8%)
Grand Total (25,558)	837 (3.3%)	7,328 (28.7%)	14,790 (57.9%)	3,440 (13.5%)

214 *worked between March 15, 2020 – May 13, 2021. Excludes non-medical contract workers. An individual could have
 215 positions in multiple job classes, so can be counted in multiple rows. Grand total only counts each HCW once.

216
 217 The crude cumulative population rate was 4.0%, or 4.4% when age-adjusted to match the
 218 workforce demographics, to allow comparison with our HCW cohort. By May 13, 2021, 3.3% of
 219 the VCH health workforce had tested positive for COVID-19, ranging from 3.2% in the acute
 220 sector to 4.6% in the long-term care sector; the highest risk occupational group was Licensed
 221 Practical Nurses and Care Aides (5.2%) and the lowest, medical staff (2.1%). During this time

222 period, there was a shift from a rate of <1% VOC in early February to a high rate of two
 223 variants of concern (VOC) the B.1.1.7 and P.1 variants – representing >92% of all infections by
 224 study closure, approximately evenly split between B.1.1.7 and P.1. (19).

225 There were 390 COVID-19 cases among active HCWs between Dec 15, 2020, and May 13,
 226 2021. Of the 390 HCWs who became infected, 276 (70.8%) were unvaccinated or had received
 227 the first dose <14 days prior to their positive test, 98 (25.1%) tested positive 14 days or more
 228 after the first dose but before 7 days after the second dose, and 16 (4.1%) tested positive 7 days
 229 or more after the second dose (Table 2). Rates continued to decline despite climbing community
 230 rates.

231 **Table 2 – COVID-19 positive tests after vaccination in VCH HCWs from December 15, 2020**

When positive test occurred	Count	Days from last dose to positive test
Tested positive \geq 14 days after first dose of vaccine	98 (25.1%)	Median 47 days (IQR 33-61; Range 14-106) Mean 48.1 days (95% CI 43.9-52.3)
Tested positive \geq 7 days after second dose of vaccine	16 (4.1%)	Median 54 days (IQR 44-62; Range 8-87) Mean 53.1 days (95% CI 43.2-62.9)
Tested positive when unvaccinated or <14 days after first dose	276 (70.8%)	--
Before 1 st dose	220 (56.4%)	--
< 14 days after first dose	56 (14.4%)	Median 8 days (IQR 4-9; Range 1-13) Mean 7.0 days (95% CI 6.1-7.9)
TOTAL tested positive	390 (100.0%)	--

232
 233 The difference in COVID-19 rates between unvaccinated, vaccinated with one dose and fully
 234 vaccinated HCWs is shown in Table 3, where positive test results that occurred before 2 weeks
 235 after the first dose are counted in the unvaccinated category; similarly, positive tests that occur
 236 before 1 week after the 2nd dose are counted in the 1st dose category.

237

238 **Table 3 – COVID-19 positive tests by vaccination status over time in VCH HCWs and community**
 239 **(aged 20-69) from December 15, 2020 to May 13, 2021. The adjusted rate is calculated using Cox**
 240 **regression, adjusting for age and calendar time**

Group	Time range	Cases	Exposure person-days	Rate per 10,000 person-days	Unadjusted rate reduction compared with unvaccinated HCW	Adjusted rate reduction compared with unvaccinated HCW	Rate reduction compared with community rate
Community (VCH & Fraser Health)	December 15, 2020 to May 13, 2021	57,581	2.93 x 10 ⁸	1.96	--	--	--
Effectively unvaccinated HCWs	Before 1 st dose	220	1,772,575	1.24	--	--	--
	< 14 days after 1 st dose	56	298,634	1.88	--	--	--
	Overall	276	2,071,573	1.33	--	--	--
Partially vaccinated HCWs	14 - 41 days after 1 st dose	39	578,496	0.67	49.4% (29.2% to 63.8%)	--	65.7% (53.0% to 74.9%)
	≥ 42 days after 1 st dose	59	523,354	1.13	15.4% (-12.1% to 36.1%)	--	42.6% (25.9% to 55.5%)
	Overall	98	1,101,850	0.89	33.2% (15.9% to 47.0%)	37.2% (16.6% to 52.7%)	54.7% (44.8% to 62.9%)
Fully vaccinated HCWs	≥ 7 days after 2 nd dose	16	536,300	0.30	77.6% (62.9% to 86.5%)	79.2% (64.6% to 87.8%)	84.8% (75.2% to 90.7%)

241
 242 Rates of infection during the observation period were 1.33 per 10,000 person-days in
 243 unvaccinated HCWs, and 0.89 and 0.30 per 10,000 person-days for partially and fully vaccinated
 244 HCWs respectively (Table 3). This represents unadjusted reductions of COVID-19 of 33.2%
 245 (95% CI, 15.9% to 47.0%) and 77.6% (95% CI, 62.9% to 86.5%) for partially and fully
 246 vaccinated HCWs respectively. Compared with the unvaccinated community rates, unadjusted
 247 reductions were 54.7% (95% CI, 44.8% to 62.9%) and 84.8% (95% CI, 75.2% to 90.7%) for
 248 partially and fully vaccinated HCWs. These reductions are significant at 95% confidence, except
 249 for the interval comparing unvaccinated HCWs to those ≥42 days after the first dose, where

250 reductions seem to be much smaller but the size of the population under observation is too small
251 to make definitive statements in this regard. The Cox regression model, adjusted for age in years
252 and calendar time, showed a reduction of COVID-19 infections of 37.2% (95% CI, 16.6 to
253 52.7%) ≥ 14 days after the first dose and 79.2% (95% CI, 64.6 to 87.8%) ≥ 7 days after the second
254 dose. The cumulative infection rate of COVID-19 over time of unvaccinated, vaccinated ≥ 14
255 days with one dose and vaccinated ≥ 7 days with two doses is shown in Figure 3. A log-rank test
256 shows that the incidence curves are significantly different ($p < 0.001$).

257 Insert Figure 3

258 The vaccine effectiveness over time for partially and fully-vaccinated HCWs relative to the
259 unvaccinated healthcare worker population, is shown in Figure 4.

260 Insert Figure 4

261 **Discussion:**

262 Protecting the healthcare workforce is an enduring priority. As such, ongoing vigilance on the
263 adequacy of HCWs protection is essential, particularly in the face of growing concerns about
264 VOC and airborne transmission. Our data are consistent with the premise that the PPE
265 recommendations in place (generally droplet-contact except where an AGMP is being
266 performed) have provided good protection to workers, as part of a comprehensive rigorously
267 implemented IPAC, Public Health and Occupational Health integrated program, with a
268 permissive policy of N95 use based on a PCRA. While surveillance data lack details of which
269 workers chose to wear an N95, or where they did so, this study has shown that PPE policies in
270 place have worked well in our jurisdiction regardless of the proportion of viral transmission that
271 may be airborne, and regardless of the high proportion of more transmissible variants.

272 While our relatively high rate of HCWs testing positive early in the pandemic may reflect a truly
273 higher risk, it may be largely attributable to the selective testing strategy (due to limitations in
274 testing capacity), which gave health workers preferential access to testing early in the pandemic.
275 This hypothesis is supported by the observation that HCW positivity rates were similar to the
276 background population. Increased case finding during outbreaks may also explain the differences
277 in incident rates seen. Emecen and colleagues (20) showed that the serial interval and incubation
278 periods of COVID-19 in HCWs were shorter than in the general population, which they suggest
279 could be attributable to more rigorous contact tracing and isolation of infected HCWs (20).

280 Nonetheless, higher rates in HCWs with more extensive physical contact with patients (e.g. LPN,
281 care aides) compared to others (administrators and medical staff) are concerning and may indeed
282 suggest a role for occupational exposure in this group of workers. Case-control studies of risk
283 factors for COVID-19 among HCWs (21, 22) found that direct care to COVID-19 patients,
284 unmasked close interaction with colleagues, and inappropriate use or shortage of PPEs were
285 significant predictors of increased occupational risk among HCWs, along with non-work-related
286 risk factors. However, as suggested by others studies (23, 24), the higher risk in this group of
287 workers may also be explained by differences in socio-economic status and demographic factors
288 which impacts variables such as private car use (versus public transit or carpooling), household
289 composition, community of residence, and other important social determinants of health. We
290 have a nested case-control study in progress to investigate the role of these putative risk factors
291 in our cohort of VCH HCWs to supplement the rigorous analysis of surveillance data reported
292 here. Regardless of whether the higher risk is predominantly attributable to community-based or
293 workplace exposure, our data strongly indicate the need to prioritize these higher-risk workers in
294 vaccination programs.

295 Our study shows 33.2% (95% CI, 15.9 to 47.0%) vaccine effectiveness against PCR-confirmed
296 infections ≥ 14 days after first dose, and 77.6% (95% CI, 62.9 to 86.5%) effectiveness ≥ 7 days
297 after the second dose when compared to unvaccinated HCWs, even with high rates of the B.1.1.7
298 and P.1 variants. When compared to age-adjusted unvaccinated general public rates, we found
299 vaccine effectiveness of 54.7% (95% CI, 44.8 to 62.9%) ≥ 14 days after the first dose, rising to
300 84.8% (95% CI, 75.2 to 90.7%) ≥ 7 days after the second dose. This represents a conservative
301 estimate of vaccine effectiveness as infections that occur in the 14-21 period post first dose of
302 vaccine may be due to infections acquired in the two weeks before antibodies developed.
303 Moreover, the impact of vaccination on severity of disease was not captured in this analysis, and
304 that infection rates are arguably of less concern than hospitalizations and no deaths occurred in
305 our healthcare workforce.

306 Our findings are similar to other studies (18, 25-27), which show vaccine-associated infection
307 rate reductions following vaccination with increasing effectiveness from day 14 after first dose.
308 For example, Dagan et al. (28) estimated vaccine effectiveness 14-20 days post first dose as 46%
309 (95% CI, 40-51); and 92% (95% CI, 88-95) post second dose. Some studies showed higher rate
310 reduction in vaccinated HCWs than our study (28, 29); this is likely explained by lower infection
311 rates in our population: $1/10^{\text{th}}$ of rates of HCW infected reported elsewhere (1.3 per 10,000
312 person-days in our cohort compared to 13.8 per 10,000 in a US cohort) (12) likely reflecting
313 differences both in work and community transmission risk. Our lower infection rates in HCWs
314 compared to studies in other settings add to the evidence that rigorous implementation of public
315 health, occupational health and infection control measures can indeed keep HCWs protected at
316 work and at home.

317 The higher rate of COVID-19 in the first two weeks following vaccination may be partly due to
318 people dropping their guard thinking they are protected when antibodies have not yet developed,
319 or individuals already infected and in the latency period at the time they were vaccinated.
320 Regardless, the need to ensure vigilance (at work and at home) in the 2-3-week period following
321 vaccination is highlighted by our findings.

322 Unlike studies in other locations (30-32), in our jurisdiction fewer than 1% of all HCWs
323 abstained from being vaccinated for medical or personal reasons, thus vaccine hesitancy is likely
324 not a large issue. That higher risk occupational groups in our cohort – namely Licensed Practical
325 Nurses and Care Aides – had slightly lower vaccination rates compared to lower risk healthcare
326 worker groups is troubling. This may reflect less effective communication and outreach
327 strategies to these workers compared to what nurses and medical staff receive, greater difficulty
328 in organizing vaccine appointments given work schedules, or greater vaccine hesitancy; further
329 research is needed to understand the reasons for these differences.

330 Hall et al.(29) in their cohort of healthcare workers in England found their Pfizer vaccination was
331 effective against the B.1.1.7 strain, circulating at the time in the UK; their testing strategy in the
332 UK was similar to ours with only symptomatic testing of HCWs conducted outside of outbreaks.
333 Ours is the only report, of which we are aware, showing real-world effectiveness of vaccination
334 in a population highly affected by the P.1 strain of SARS-CoV-2. While more study is needed,
335 our results indicate that: 1) rigorous infection control measures have been effective in preventing
336 occupational exposure; 2) vaccination has been effective in protecting HCWs from the impact of
337 the third surge in which two VOC (B.1.1.7 and P.1) predominated; 3) protection with one dose
338 has been almost as effective as two doses for the first 42 days at least; and 4) the two-week
339 period after vaccination is a high-risk period . The protection against infection gained from the

340 single dose of the vaccine suggests that delaying administering the second dose to allow more
341 people to have received at least one dose seems to have been well-founded; these findings
342 provide strong support for guidelines suggesting an interval of at least up to 42 days between
343 first and second dose (33). A greater period of follow-up of our cohort is needed before more
344 definitive statements can be drawn from this work regarding longer delays. Importantly, our
345 study was not designed to assess real-world vaccine effectiveness related to severe disease,
346 hospitalization and death; due to a high degree of occupational protection, we did not see
347 widespread severe disease in our healthcare workforce even before the vaccination campaign
348 began, and there were no deaths from COVID-19 in HCWs in our cohort.

349 Overall, this study indicates that excellent protection can be achieved with predominantly
350 droplet-contact infection prevention and control measures with N95s where appropriate,
351 combined with prompt testing, tracing, isolation, and strong communication measures including
352 with contracted medical staff, along with public health interventions that reduce pressure on the
353 healthcare system. It further underlines the importance of the vaccination program, which we
354 found to be effective in protecting HCWs from infection even in the face of VOC. That
355 vaccination is far from perfect also underlines the need for ongoing vigilance in continued
356 occupational protection, especially as variants continue to mutate and present new challenges.
357 Nonetheless this study should provide some reassurance that the current approach of combining
358 vaccination programs with infection prevention and control measures employed with a high
359 degree of rigour, monitoring and communication, seems to indeed be effective to protect the
360 healthcare workforce.

361 Funding: Funding was received from the Canadian Institutes of Health Research (CIHR) and the
362 International Development Research Centre (IDRC) through the rapid research funding

363 opportunity from CIHR under PI Yassi and grant, “Protecting healthcare workers from COVID-
364 19: A comparative contextualized analysis.” The work is also supported and funded by Doctors
365 of BC and Vancouver Coastal Health.

366

367 References:

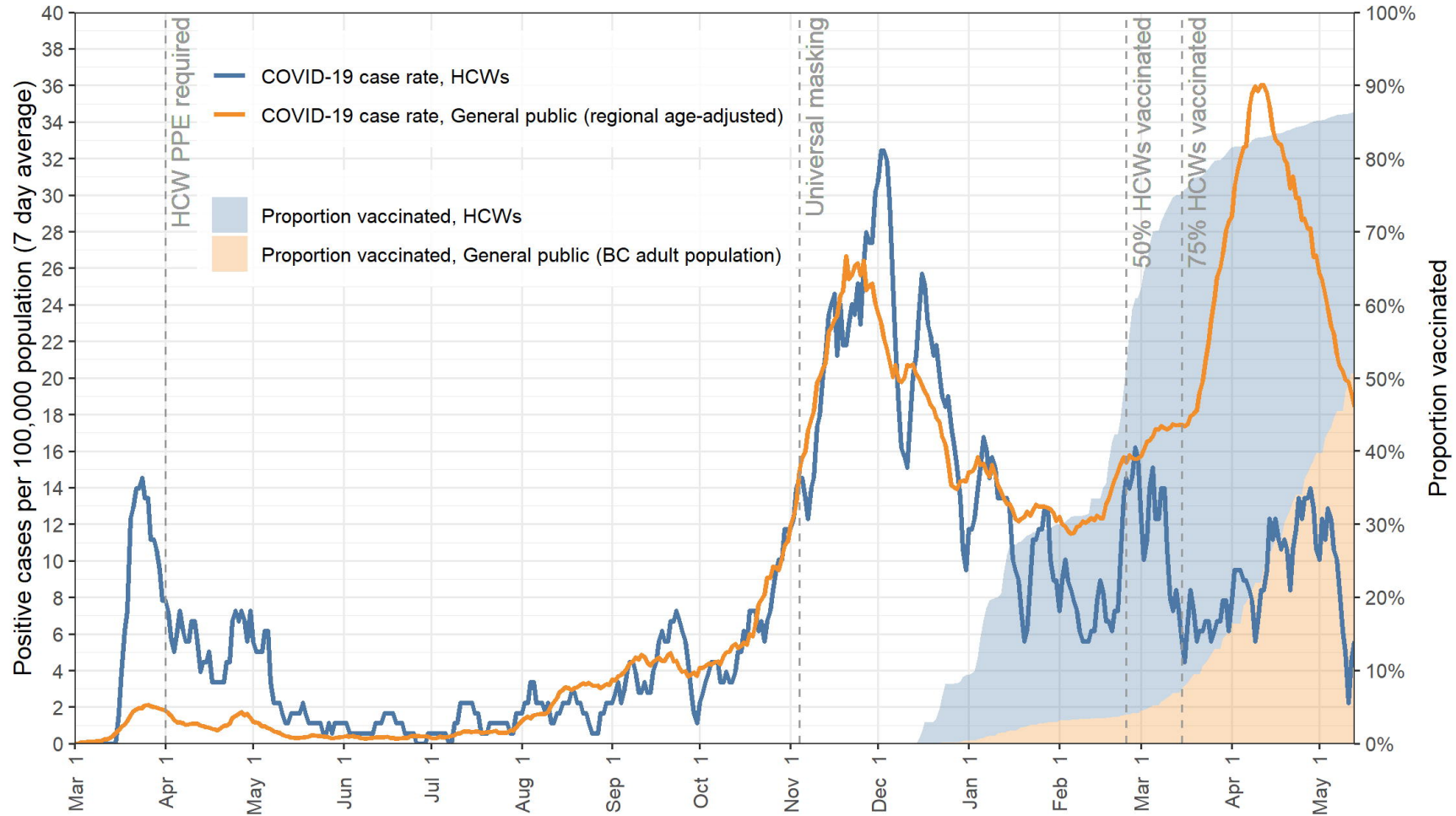
- 368 1. Mehta S, Machado F, Kwizera A, Papazian L, Moss M, Azoulay É, et al. COVID-19: a
369 heavy toll on health-care workers. *The Lancet Respiratory Medicine*. 2021;9(3):226-8.
- 370 2. McCauley L, Hayes R. Taking responsibility for front-line health-care workers. *The*
371 *Lancet Public Health*. 2020;5(9):e461-e2.
- 372 3. Kim H, Hegde S, LaFiura C, Raghavan M, Sun N, Cheng S, et al. Access to personal
373 protective equipment in exposed healthcare workers and COVID-19 illness, severity, symptoms
374 and duration: a population-based case-control study in six countries. *BMJ global health*.
375 2021;6(1):e004611.
- 376 4. Chen Q, Liang M, Li Y, Guo J, Fei D, Wang L, et al. Mental health care for medical staff
377 in China during the COVID-19 outbreak. *The Lancet Psychiatry*. 2020;7(4):e15-e6.
- 378 5. Denning M, Goh ET, Tan B, Kanneganti A, Almonte M, Scott A, et al. Determinants of
379 burnout and other aspects of psychological well-being in healthcare workers during the COVID-
380 19 pandemic: a multinational cross-sectional study. *Plos one*. 2021;16(4):e0238666.
- 381 6. Public Health Agency of Canada (PHAC). COVID-19 Infections Among Healthcare
382 Workers and Other People Working in Healthcare Settings available at
383 [https://www.canada.ca/en/public-health/services/diseases/coronavirus-disease-covid-](https://www.canada.ca/en/public-health/services/diseases/coronavirus-disease-covid-19/epidemiological-economic-research-data/infections-healthcare-workers-other-people-working-healthcare-settings.html)
384 [19/epidemiological-economic-research-data/infections-healthcare-workers-other-people-](https://www.canada.ca/en/public-health/services/diseases/coronavirus-disease-covid-19/epidemiological-economic-research-data/infections-healthcare-workers-other-people-working-healthcare-settings.html)
385 [working-healthcare-settings.html](https://www.canada.ca/en/public-health/services/diseases/coronavirus-disease-covid-19/epidemiological-economic-research-data/infections-healthcare-workers-other-people-working-healthcare-settings.html); 2021.

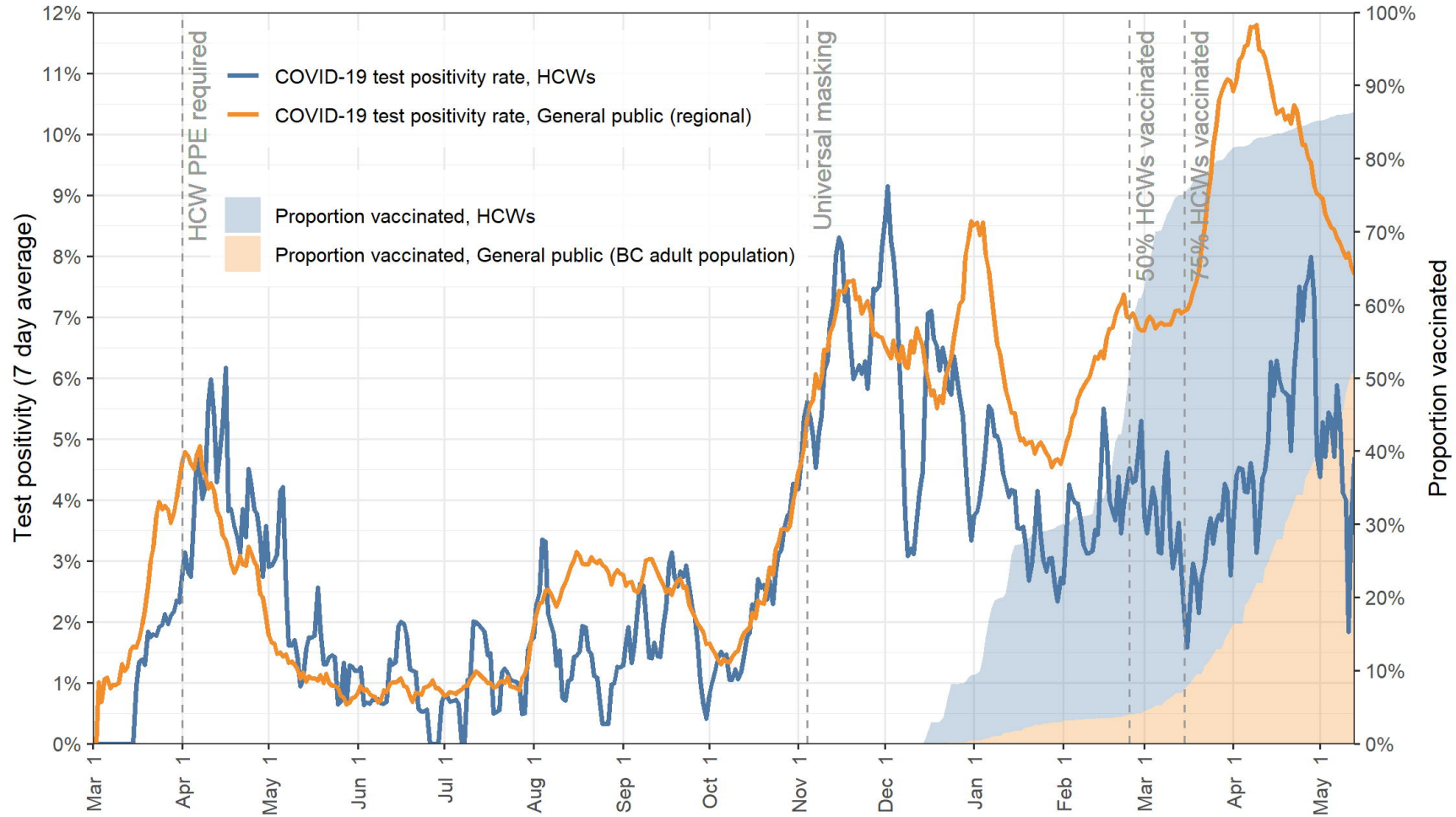
- 386 7. Gao W, Sanna M, Tsai MK, Wen CP. Geo-temporal distribution of 1,688 Chinese
387 healthcare workers infected with COVID-19 in severe conditions—A secondary data analysis.
388 Plos one. 2020;15(5):e0233255.
- 389 8. Lan F-Y, Wei C-F, Hsu Y-T, Christiani DC, Kales SN. Work-related COVID-19
390 transmission in six Asian countries/areas: a follow-up study. PloS one. 2020;15(5):e0233588.
- 391 9. Greenhalgh T, Jimenez JL, Prather KA, Tufekci Z, Fisman D, Schooley R. Ten scientific
392 reasons in support of airborne transmission of SARS-CoV-2. The Lancet. 2021.
- 393 10. Hamilton F, Arnold D, Bzdek B, Dodd J, AERATOR GROUP, Redi J, et al. Aerosol
394 generating procedures: are they of relevance for transmission of SARS-CoV-2? The lancet
395 Respiratory Medicine. 2021;May 6 2021.
- 396 11. COVID-19: protecting health-care workers. Lancet (London, England).
397 2020;395(10228):922.
- 398 12. Thompson MG. Interim Estimates of Vaccine Effectiveness of BNT162b2 and mRNA-
399 1273 COVID-19 Vaccines in Preventing SARS-CoV-2 Infection Among Health Care Personnel,
400 First Responders, and Other Essential and Frontline Workers—Eight US Locations, December
401 2020–March 2021. MMWR Morbidity and Mortality Weekly Report. 2021;70.
- 402 13. National Collaborating Centre for Infectious Diseases. Updates on COVID-19 Variants
403 of Concern available at <https://nccid.ca/covid-19-variants/#subMenuSection12021> [
404 14. Coutinho RM, Marquitti FMD, Ferreira LS, Borges ME, da Silva RLP, Canton O, et al.
405 Model-based evaluation of transmissibility and reinfection for the P. 1 variant of the SARS-CoV-
406 2. medRxiv. 2021.
- 407 15. National Advisory Committee on Immunization (NACI). Archived 5: NACI rapid
408 response: Extended dose intervals for COVID-19 vaccines to optimize early vaccine rollout and

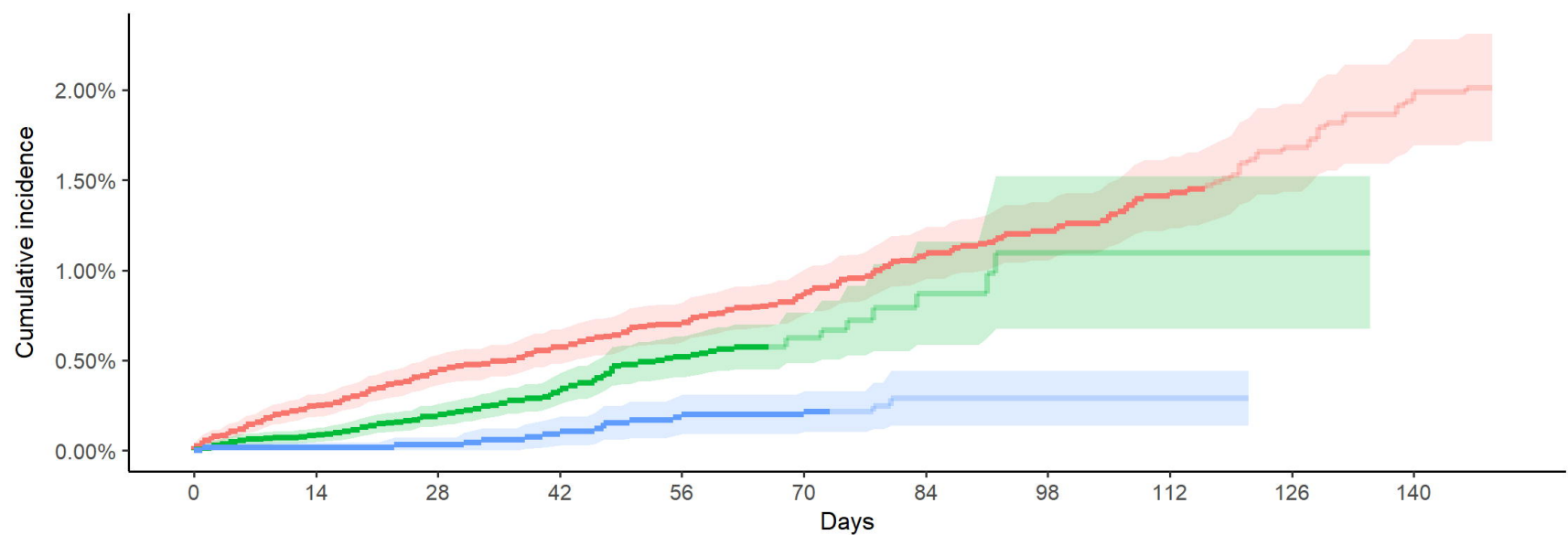
- 409 population protection in Canada [2021-03-03]. available at [https://www.canada.ca/en/public-](https://www.canada.ca/en/public-health/services/immunization/national-advisory-committee-on-immunization-naci/rapid-response-extended-dose-intervals-covid-19-vaccines-early-rollout-population-protection.html)
- 410 [health/services/immunization/national-advisory-committee-on-immunization-naci/rapid-](https://www.canada.ca/en/public-health/services/immunization/national-advisory-committee-on-immunization-naci/rapid-response-extended-dose-intervals-covid-19-vaccines-early-rollout-population-protection.html)
- 411 [response-extended-dose-intervals-covid-19-vaccines-early-rollout-population-protection.html](https://www.canada.ca/en/public-health/services/immunization/national-advisory-committee-on-immunization-naci/rapid-response-extended-dose-intervals-covid-19-vaccines-early-rollout-population-protection.html);
- 412 2021.
- 413 16. BC Centre for Disease Control (BCCDC), BC Ministry of Health. COVID-19 Ethical
- 414 Decision-Making Framework. available at [http://www.bccdc.ca/Health-Professionals-](http://www.bccdc.ca/Health-Professionals-Site/Documents/COVID-19_Ethical_Decision_Making_Framework.pdf)
- 415 [Site/Documents/COVID-19_Ethical_Decision_Making_Framework.pdf](http://www.bccdc.ca/Health-Professionals-Site/Documents/COVID-19_Ethical_Decision_Making_Framework.pdf); December 24, 2020.
- 416 17. Statistics Canada. Census Profile, 2016 Census - Northeast [Economic region], British
- 417 Columbia and British Columbia [Province] available at [https://www12.statcan.gc.ca/census-](https://www12.statcan.gc.ca/census-recensement/2016/dp-pd/prof/details/page.cfm?Lang=E&Geo1=ER&Code1=5980&Geo2=PR&Code2=59&SearchText=Northeast&SearchType=Begins&SearchPR=01&B1=All&GeoLevel=PR&GeoCode=5980&TABID=1&type=02019)
- 418 [recensement/2016/dp-](https://www12.statcan.gc.ca/census-recensement/2016/dp-pd/prof/details/page.cfm?Lang=E&Geo1=ER&Code1=5980&Geo2=PR&Code2=59&SearchText=Northeast&SearchType=Begins&SearchPR=01&B1=All&GeoLevel=PR&GeoCode=5980&TABID=1&type=02019)
- 419 [pd/prof/details/page.cfm?Lang=E&Geo1=ER&Code1=5980&Geo2=PR&Code2=59&SearchTex](https://www12.statcan.gc.ca/census-recensement/2016/dp-pd/prof/details/page.cfm?Lang=E&Geo1=ER&Code1=5980&Geo2=PR&Code2=59&SearchText=Northeast&SearchType=Begins&SearchPR=01&B1=All&GeoLevel=PR&GeoCode=5980&TABID=1&type=02019)
- 420 [t=Northeast&SearchType=Begins&SearchPR=01&B1=All&GeoLevel=PR&GeoCode=5980&T](https://www12.statcan.gc.ca/census-recensement/2016/dp-pd/prof/details/page.cfm?Lang=E&Geo1=ER&Code1=5980&Geo2=PR&Code2=59&SearchText=Northeast&SearchType=Begins&SearchPR=01&B1=All&GeoLevel=PR&GeoCode=5980&TABID=1&type=02019)
- 421 [ABID=1&type=02019](https://www12.statcan.gc.ca/census-recensement/2016/dp-pd/prof/details/page.cfm?Lang=E&Geo1=ER&Code1=5980&Geo2=PR&Code2=59&SearchText=Northeast&SearchType=Begins&SearchPR=01&B1=All&GeoLevel=PR&GeoCode=5980&TABID=1&type=02019) [
- 422 18. Hunter PR, Brainard JS. Estimating the effectiveness of the Pfizer COVID-19 BNT162b2
- 423 vaccine after a single dose. A reanalysis of a study of 'real-world' vaccination outcomes from
- 424 Israel. Medrxiv. 2021.
- 425 19. BC Centre for Disease Control (BCCDC). April 13, 2021: COVID-19 confirmed Variant
- 426 of Concern (VoC) cases reported by Health Authorities to BCCDC and confirmed by sequencing
- 427 at BCCDC Public Health Laboratory available at [http://www.bccdc.ca/Health-Info-](http://www.bccdc.ca/Health-Info-Site/Documents/VoC/VoC_04132021.pdf2021)
- 428 [Site/Documents/VoC/VoC_04132021.pdf2021](http://www.bccdc.ca/Health-Info-Site/Documents/VoC/VoC_04132021.pdf2021) [
- 429 20. Emecen AN, Basoglu Sensoy E, Sezgin E, Yildirim Ustuner B, Keskin S, Siyve N, et al.
- 430 Transmission dynamics and timing of key events for SARS-CoV-2 infection in healthcare
- 431 workers. Infectious Diseases. 2021:1-7.

- 432 21. Çelebi G, Pişkin N, Bekleviç AÇ, Altunay Y, Keleş AS, Tüz MA, et al. Specific risk
433 factors for SARS-CoV-2 transmission among health care workers in a university hospital.
434 American journal of infection control. 2020;48(10):1225-30.
- 435 22. Lentz RJ, Colt H, Chen H, Cordovilla R, Popevic S, Tahura S, et al. Assessing
436 coronavirus disease 2019 (COVID-19) transmission to healthcare personnel: The global ACT-
437 HCP case-control study. Infection Control & Hospital Epidemiology. 2020:1-7.
- 438 23. Karmakar M, Lantz PM, Tipirneni R. Association of social and demographic factors with
439 COVID-19 incidence and death rates in the US. JAMA network open. 2021;4(1):e2036462-e.
- 440 24. Nguyen LH, Drew DA, Graham MS, Joshi AD, Guo C-G, Ma W, et al. Risk of COVID-
441 19 among front-line health-care workers and the general community: a prospective cohort study.
442 The Lancet Public Health. 2020;5(9):e475-e83.
- 443 25. Amit S, Regev-Yochay G, Afek A, Kreiss Y, Leshem E. Early rate reductions of SARS-
444 CoV-2 infection and COVID-19 in BNT162b2 vaccine recipients. The Lancet.
445 2021;397(10277):875-7.
- 446 26. Benenson S, Oster Y, Cohen MJ, Nir-Paz R. BNT162b2 mRNA Covid-19 vaccine
447 effectiveness among health care workers. New England Journal of Medicine. 2021.
- 448 27. Keehner J, Horton LE, Pfeffer MA, Longhurst CA, Schooley RT, Currier JS, et al.
449 SARS-CoV-2 infection after vaccination in health care workers in California. New England
450 Journal of Medicine. 2021.
- 451 28. Dagan N, Barda N, Kepten E, Miron O, Perchik S, Katz MA, et al. BNT162b2 mRNA
452 Covid-19 vaccine in a nationwide mass vaccination setting. New England Journal of Medicine.
453 2021;384(15):1412-23.

- 454 29. Hall VJ, Foulkes S, Saei A, Andrews N, Oguti B, Charlett A, et al. COVID-19 vaccine
455 coverage in health-care workers in England and effectiveness of BNT162b2 mRNA vaccine
456 against infection (SIREN): a prospective, multicentre, cohort study. *The Lancet*. 2021.
- 457 30. Szmyd B, Karuga FF, Bartoszek A, Staniecka K, Siwecka N, Bartoszek A, et al. Attitude
458 and Behaviors towards SARS-CoV-2 Vaccination among Healthcare Workers: A Cross-
459 Sectional Study from Poland. *Vaccines*. 2021;9(3):218.
- 460 31. Di Gennaro F, Murri R, Segala FV, Cerruti L, Abdulle A, Saracino A, et al. Attitudes
461 towards Anti-SARS-CoV2 Vaccination among Healthcare Workers: Results from a National
462 Survey in Italy. *Viruses*. 2021;13(3):371.
- 463 32. Edwards B, Biddle N, Gray M, Sollis K. COVID-19 vaccine hesitancy and resistance:
464 Correlates in a nationally representative longitudinal survey of the Australian population. *PloS*
465 *one*. 2021;16(3):e0248892.
- 466 33. World Health Organization (WHO). Interim recommendations for use of the Pfizer–
467 BioNTech COVID-19 vaccine, BNT162b2, under emergency use listing: interim guidance, 8
468 January 2021. available at [https://assets.documentcloud.org/documents/20445916/who-2019-
469 ncov-vaccines-sage_recommendation-bnt162b2-20211-eng.pdf](https://assets.documentcloud.org/documents/20445916/who-2019-ncov-vaccines-sage_recommendation-bnt162b2-20211-eng.pdf): World Health Organization;
470 2021.
- 471







Number at risk at the time of observation

■	25116	25054	22922	19924	17626	17082	13735	6968	5411	4450	3982
■	21161	20737	19697	12833	10483	3177	1195	674	165	62	0
■	6734	6581	6533	6497	6480	6171	2185	925	12	0	0

