

## **T Cell Positive B Cell Negative Flow Cytometry Crossmatch (FCXM): Frequency, HLA-Locus Specificity, and Mechanisms Among 3073 Clinical FCXM Tests**

Prabhakar Putheti,<sup>1,2</sup> Vijay K Sharma,<sup>1,2</sup> Rex Friedlander,<sup>1</sup> Arvind Menon,<sup>1</sup> Darshana Dadhania,<sup>1,2,3</sup>  
Thangamani Muthukumar,<sup>1,2,3</sup> and Manikkam Suthanthiran.<sup>1,2,3</sup>

<sup>1</sup>Immunogenetics and Transplantation Center, The Rogosin Institute, 430E, 71<sup>st</sup> Street, New York, NY 10021

<sup>2</sup>Division of Nephrology and Hypertension, Joan and Sanford I. Weill Department of Medicine, New York Presbyterian-Weill Cornell Medicine, 1300 York Avenue, New York, NY 10065

<sup>3</sup>Department of Transplantation Medicine, New York Presbyterian-Weill Cornell Medicine, 1300 York Avenue, New York, NY 10065

Abstract: 250  
Article: 3796  
Number of Figures: 4  
Number of Tables: 2

### **Correspondence Information:**

Prabhakar Putheti, MS, PhD.  
Immunogenetics and Transplantation Center,  
The Rogosin Institute, 430 East, 71<sup>st</sup> street, New York, NY 10021, USA.  
prp9030@nyp.org

Thangamani Muthukumar, MD  
Division of Nephrology and Hypertension, Joan and Sanford I. Weill Department of Medicine,  
New York Presbyterian-Weill Cornell Medicine, 1300 York Avenue, New York, NY 10065, USA.  
mut9002@med.cornell.edu

## **Authorship**

P.P., V.K.S, and M.S. designed research

P.P., V.K.S, R.F., and A.M. performed research

T.M., V.K.S., R.F., A.M., D.D, T.M., and M.S. analyzed data

P.P. and M.S. wrote the paper

## **Disclosure**

Manikkam Suthanthiran has a Consultancy Agreement with CareDx, Inc. Brisbane, CA and with Sparks Therapeutics, Philadelphia, PA. The other authors of this manuscript declare no conflicts of interest. The other authors have no disclosures.

## **Funding**

None

## ABBREVIATIONS

ACD: Acid Citrate Dextrose

B cell: B lymphocyte

CD: cluster of differentiation

CDC-XM complement dependent cytotoxicity crossmatch

CS: channel shift

DSA: donor specific antibody

EDTA: Ethylenediaminetetraacetic acid

F(ab')<sub>2</sub>: fragment antigen-binding

Fc: fragement crystallizable

FCXM: flow cytometry crossmatch

FITC: Fluorescein isothiocyanate

FSC: forward scatter

HLA: human leukocyte antigen

IgG: Immunoglobulin G

IQR: interquartile range

LSA: Luminex single antigen

mAb: monoclonal antibody

MCF: median channel fluorescence

MFI: mean fluorescence intensity

NCS: negative control serum

PBMC: peripheral blood mononuclear cells

PBS: phosphate buffered saline

PCS: positive control serum

PE: Phycoerythrin

PerCP: Peridinin-Chlorophyll-Protein

RS: recipient serum

SSC: side scatter

T cell: T lymphocyte

## ABSTRACT

**Background.** A T cell positive and B cell negative (T+B-) flow cytometry crossmatch (FCXM) result remains a conundrum since HLA-class I antigens are expressed on both T and B cells. We investigated the frequency, HLA specificity of the antibodies and mechanisms for the T+B- FCXM result.

**Methods.** We analyzed 3073 clinical FCXM tests performed in an American Society of Histocompatibility and Immunogenetics accredited histocompatibility laboratory. The sera associated with the T+B- FCXM were also tested for donor HLA IgG antibodies using LABScreen™ single antigen assays.

**Results.** Among the 3073 FCXM tests, 1963 were T-B-, 811 were T-B+, 274 were T+B+, and 25 were T+B-. IgG antibodies directed at donor HLA-A, B, or Cw locus determined antigens (DSA) were identified in all 25 sera and the summed mean fluorescence intensity (MFI) of DSA ranged from 212 to 53,187. Correlational analyses identified a significant association between the summed MFI of class I DSA, and the median channel fluorescence (MCF) of T cells treated with the recipient serum (Spearman rank correlation,  $r_s=0.34$ ,  $P=0.05$ ) but not with the MCF of B cells ( $r_s=0.23$ ,  $P=0.24$ ). We identified that differential binding of anti-HLA antibodies to T cells and B cells and the B cell channel shift threshold used to classify a B cell FCXM are potential contributors to a T+B- FCXM result.

**Conclusions.** Our analysis of 3073 FCXM, in addition to demonstrating that HLA antibodies directed at HLA-A, B or Cw locus are associated with a T+B- result, identified mechanisms for the surprising T+B- FCXM result.

## INTRODUCTION

Kidney transplantation is the treatment of choice for most patients with irreversible kidney failure, but pre-sensitization to donor human leukocyte antigens (HLA) and antibody-mediated rejection, undermine its full benefits. In a landmark publication, Patel and Terasaki reported that 24 of 30 kidneys transplants performed across a positive complement dependent cytotoxicity crossmatch (CDC-XM) failed in an accelerated fashion<sup>1</sup>. Test systems to detect circulating antibodies at a higher sensitivity than CDC-XM have been developed, and the flow cytometry crossmatch (FCXM) is in widespread use to identify donor specific IgG antibodies (DSA)<sup>2-5</sup>. Pre-transplant FCXM results are used in many centers for optimizing donor selection, and pre-transplant T and B cell FCXM results have been associated with allograft outcomes<sup>6-10</sup>. FCXM detects binding of any type of antibodies to T cells and B cells including autoantibodies and non-HLA antibodies.

HLA-class I antigens are expressed on T cells and B cells, and some but not all studies suggest that the cell surface expression of HLA-class I antigens is higher on B than T cells<sup>11,12</sup>. Thus, a T+B+ FCXM, rather than a T+B-, is the expected result in the presence of HLA-class I antibodies. A T-B+ FCXM is the anticipated result in the presence of HLA-class II antibodies only since HLA-class II antigens are expressed on B cells but not on resting T cells<sup>13</sup>.

We aimed to determine the frequency, HLA-specificity of the antibodies and potential mechanisms responsible for the T+B- FCXM. We analyzed 3073 clinical FCXM tests performed using a standardized protocol in an American Society of Histocompatibility and Immunogenetics accredited Histocompatibility Laboratory and report here the frequency, HLA-specificity of the antibodies and mechanisms responsible for the T+B- FCXM.

## **MATERIALS AND METHODS**

### **Isolation of mononuclear cells for FCXM test**

Peripheral blood collected in acid citrate dextrose tubes was used for isolation of peripheral blood mononuclear cells (PBMC) using Ficoll-Paque™ Premium solution (GE Healthcare Biosciences AB, Pittsburgh, PA) density gradient centrifugation. Mononuclear cells from the lymph node and spleens from deceased donors were also isolated using Ficoll-Paque™ Premium solution density gradient centrifugation. The mononuclear cells from the interface were washed thrice with phosphate buffered saline (PBS) and the red blood cells were lysed with tris ammonium chloride. PBMC were counted using either Neubauer counting chamber or LUNA™ Automated Cell Counter (Model# L20001; Logos Biosystems, Inc., Annandale, VA). Cell viability was assessed using Trypan blue exclusion test or acridine orange/propidium iodide assay. The viability of mononuclear cells exceeded 80% in the assays reported here.

### **Separation of serum**

Peripheral blood collected in serum separation tubes was centrifuged at 2300 revolutions per minute for 20 minutes. The serum was collected and treated with 0.3% sodium azide prior to storage.

### **FCXM**

FCXM was performed in a 96 well V-bottom plate (Cat#3894, Corning, Inc., Corning, NY). 300,000 PBMC or mononuclear cells, isolated from the spleen or the lymph node, were incubated with 30 µl of negative control serum (NCS) (normal male human AB serum free of HLA-class I and II antibodies); recipient serum (RS); or positive control serum (PCS, pooled serum from highly sensitized patients with broad HLA reactivity) for 20 minutes at 22<sup>0</sup>C. Prior to testing, the NCS, the RS and the PCS were centrifuged at 42,030 relative centrifugal force to remove any aggregates or cryoprecipitate.

The mononuclear cells used as target cells in the FCXM were washed twice with wash buffer (PBS with 0.1% FBS and 0.1% Sodium Azide) and stained with 10  $\mu$ l each of anti-CD3 PerCP mAb (Cat#340663; BD Biosciences, San Jose, CA); anti-CD19 PE mAb (Cat#340720; BD Biosciences); and fluorescein (FITC) affinity purified F(ab')<sub>2</sub> fragment goat anti-human IgG, Fc $\gamma$  fragment specific (Cat# 109-096-098; Jackson ImmunoResearch Laboratories, Inc.; 1:200 diluted) for 30 minutes at 4<sup>o</sup>C. The cells were then washed once, fixed with 1% paraformaldehyde, and FCXM was performed using BD FACS Canto II instrument and the data were analyzed using the FACSDiva software (versions 7.1.3 and 8.0.1). Lymphocytes were gated using forward scatter (FSC) versus side scatter (SSC) plot. Median channel fluorescence (MCF) of goat-anti-human IgG FITC fluorescence on T cells and on B cells was measured from the histograms. Channel shift (CS) was calculated by subtracting the MCF observed with NCS from the MCF observed with the RS or PCS.

A T cell FCXM test was reported as positive if the MCF of T cells incubated with the RS showed a 40 CS or higher. A B cell FCXM test was reported as a positive test if the MCF of B cells incubated with the RS showed a 50 CS or higher. The CS thresholds were based on the interquartile range (IQR, calculated by subtracting the 25<sup>th</sup> percentile value from the 75<sup>th</sup> percentile value) observed in our laboratory following treatment of target mononuclear cells with NCS. In 2020 consecutive T cell FCXM performed at our center, the median MCF of T cells treated with NCS was 229 and the IQR was 39, and in 2019 consecutive B cell FCXM, the median MCF of B cells treated with NCS was 252 and the IQR was 47. In eight consecutive American Society for Histocompatibility and Immunogenetics (ASHI)-proficiency challenges involving 66 unique sera and 16 unique HLA-typed cells, the use of these CSs, 65 of 66 T cell FCXM tests and 64 of 66 B cell FCXM were concordant with the 80% ASHI consensus result (ground truth).



## Detection of Anti-HLA Antibodies

Sera, untreated or treated with EDTA (0.025M final concentration), were tested for the presence of anti-HLA IgG antibodies leveraging Luminex<sup>®</sup> bead-based multiplexing technology. Anti-HLA-class I HLA-A, B, C IgG antibodies and anti-HLA-class II HLA-DR, DQ, DP IgG antibodies were identified using LABScreen<sup>™</sup> Single Antigen class I assay (LS1A04) and LABScreen<sup>™</sup> Single Antigen class II assay (LS2A01), respectively (One Lambda, Inc., Canoga Park, CA). In the LABScreen Single Antigen (LSA) assay, 10  $\mu$ l of serum samples were incubated with 2.5  $\mu$ l of microbeads coated with HLA-class I or HLA-class II antigens, respectively, at 22<sup>0</sup>C for 30 minutes. The specimens were then washed thrice in 1X wash buffer (One Lambda, Inc.). The microbeads were treated with PE labeled goat-anti-human IgG polyclonal antibody (Cat#LS-AB2, One Lambda, Inc.) at 22<sup>0</sup>C for 30 minutes in dark and washed thrice in wash buffer. The LABScan 100/200 (Luminex Corporation, Austin, TX) was used for acquisition of microbead fluorescence and data analysis. Data were then exported to HLA fusion software (One Lambda, Inc.) for analysis.

## Data Analysis

A total of 3609 FCXM tests were performed in our laboratory from February 2014 to April 2018. We report data from 3073 FCXM tests using potential organ donor's cells as target cells, and after exclusion of recipient auto FCXM and repeat donor FCXM with the same result.

In the Lumine single antigen bead (LSA) assay, any single antigen bead with a trimmed mean fluorescence intensity (MFI) of  $\geq 2000$  was scored as positive for the presence of anti-HLA IgG DSA in accord with our threshold used in the ASHI Proficiency challenges. We summed MFI of class I and MFI class I and II for the correlational analyses between summed MFI and MCF of T cells and B cells treated with RS, respectively.

## Statistical Analysis

Statistical analysis was performed using Prism 9 (GraphPad Software, San Diego, CA, USA). We summarized the data as median and IQR and used Mann-Whitney test and Wilcoxon matched-pairs signed-rank test to compare the groups. A two-sided P-value  $<0.05$  was considered significant. Data analysis was performed under Weill Cornell Medicine institutional review board approved protocol.

## RESULTS

### Frequency of T+B- FCXM Result

A total of 3609 clinical FCXM tests were performed in our laboratory from February 2014 to April 2018 and data from 3073 FCXM tests were included in downstream data analysis (Figure 1). Among the 3073 tests, 1963 FCXM tests were negative (64%) and 1110 FCXM tests were positive (36%). Among the positive tests, 811 were T-B+ (73%), 274 were T+B+ (24.7%) and 25 FCXM were T+B- (2.3%).

24 unique patients awaiting kidney transplantation contributed the 25 sera associated with the T+B- and one patient's serum was tested against two different donors and the results were T+B- in both instances. In 12 FCXM, a recent serum and a historical serum from the same patient were tested against the same donor and data analysis showed that 10 of the 12 historical sera were also T+B- (with 2 sera being borderline T positive with CS of 31 and 39) and two were T+B+.

Eleven of the 25 T+B- FCXM (44%) were performed using deceased donor cells as targets and 14 (56%) were performed using living donor cells as targets. PBMC were the targets in 22 of 25 T+B- FCXM, and mononuclear cells isolated from spleen ( $n=2$ ) or lymph node ( $n=1$ ) were the targets in 3.

### Donor HLA Antibodies Associated with the T+B- FCXM

Donor HLA specific IgG antibodies directed at HLA class I antigens ( $>2000$  MFI) were detected in 23 of 25 sera associated with the T+B- FCXM. In # Case 24, the MFI of IgG DSA directed at donor HLA-A1 was 1403 and the MFI of DSA directed at HLA-B57 was 1741. In Case #25, the highest MFI of DSA was 212. Analysis for HLA-class I locus specificity showed that the antibodies were often directed at more than one locus (Table 1). Among the 23 sera, antibodies directed at HLA-A were identified in 12, antibodies at HLA-B in 10, and antibodies at HLA-Cw in 10. Antibodies directed at HLA-class II antigens were also detected in 6 sera.

## Characteristics of T+B- FCXM

Table 2 lists the characteristics of the 25 T+B- FCXM. The median (IQR) of MCF was 230 (36) with the potential donor T cells treated with NCS and 250 (65) for the corresponding B cells ( $P<0.05$ , Wilcoxon signed-rank test for paired samples). This difference remained significant even after exclusion of Case #5 with a low T cell MCF and an unusually high B cell MCF. B cell MCF being higher than T cell MCF was also observed in the 3048 FCXM tests that were not T+B- (B cell MCF=253[45] vs. T cell MCF=233[38],  $P<0.0001$ ).

MCF of T cells and the MCF of B cells treated with the RS in the 25 T+B- FCXM were not different. The median (IQR) MCF was 287(33) with the T cells treated with the RS and 283 (74) for the corresponding B cells treated with the RS ( $P=0.81$ ).

The channel shift, calculated by subtracting the MCF of cells treated with NCS from the MCF of cells treated with the RS, differed significantly between the T cells and the B cells in the 25 T+B- FCXM. The median (IQR) CS with T cells was 49 (20) and higher than the median (IQR) 38 (15) CS with B cells ( $P<0.0001$ ).

Figure 2 shows the differential relationship between summed MFI of DSA and the MCF of T cells and MCF of B cells treated with the RS in the 25 T+B- FCXM. A significant and positive association was observed between the summed MFI of class I DSA and T cell MCF treated with RS (Figure 2A, Spearman rank correlation coefficient  $r_s=0.34$ ,  $P=0.05$ ) and there was no significant association between B cell MCF and the summed MFI of class I DSA (Figure 2B,  $r_s=0.24$ ,  $P=0.22$ ) or the summed MFI of class I and class II DSA (Figure 2C,  $r_s=0.23$ ,  $P=0.24$ ).

## Potential Mechanisms for the T+B- FCXM Result

A mechanism for the T+B- FCXM is that the MCF of B cells treated with the NCS was uniquely higher when the result is T+B- FCXM compared to the B cell MCF when the result is T+B+ FCXM or T-B+ FCXM. To investigate this possibility, we compared the MCF of B cells treated with NCS among the FCXM classified as T+B-, T+B+, or T-B+ FCXM. The median (IQR) of B cell MCF was 250 (65) in the 25 T+B- FCXM tests, 248 (49) in the 274 T+B+ FCXM, and 254 (45) in the 811 T-B+ FCXM ( $P=0.2$ , Kruskal-Wallis test) (Figure 3A). Thus, a uniquely high B cell MCF was not responsible for the observed T+B- test result.

Another mechanism for the T+B- FCXM result is that the MCF of T cells treated with NCS was uniquely lower in T+B- FCXM compared to T+B+ or T-B+ FCXM. To investigate this possibility, we compared the MCF of T cells treated with NCS among FCXM scored as T+B-, T+B+ or T-B+. The median (IQR) of T cell MCF was 230 (36) in the 25 T+B- FCXM tests, 229 (41) in the 274 T+B+ FCXM, and 234 (43) in the 811 T-B+ FCXM ( $P=0.06$ ) (Figure 3B). Thus, a uniquely low T cell MCF was an unlikely contributor to the T+B- FCXM.

A 50 CS is used as the threshold to classify a B cell FCXM as positive and a 40 CS to classify a T cell FCXM as positive in our laboratory. This differential cutpoint is a potential contributor to the T+B- FCXM result. Our data analysis showed that the 50 CS applied to score a B cell FCXM as positive may have contributed to 12 of 25 T+B- FCXM results (Table 1).

Figure 4 shows the flow cytometry acquisition setup and representative T+B- FCXM tests to illustrate potential mechanisms. The lymphocyte subpopulation was gated using FSC versus side SSC plot (Figure 4A). The T cells were gated using CD3 PerCP and the B cells using CD19 PE and the MCF of goat-anti-human IgG FITC fluorescence on T cells and on B cells were measured using histograms (Figure 4B). Figure 4C is a representative T+B- FCXM in which the 50 CS threshold used to score a B cell FCXM as

positive contributed to the T+B-. Figure 4 D is a representative T+B- FCXM in which the 50 CS threshold used to score a B cell FCXM as positive did not contribute to the T+B- FCXM.

### **Clinical Outcomes**

Three patients (Cases #16, #23 and #24) with a T+B- FCXM received kidney transplants at our center. All 3 received antithymocyte globulin as induction therapy and 2 (Cases # 16 and #23) received additional treatment with rituximab and intravenous immunoglobulin as per our transplant center policy for patients with DSA by LSA and a positive FCXM. The third patient, case #24 without DSA by LSA assay but a T+B- FCXM, did not receive additional therapy with rituximab or intravenous immunoglobulin. All three received maintenance therapy consisting of tacrolimus, mycophenolate mofetil and prednisone. None had an episode of acute rejection within the first year of transplantation and have excellent kidney graft function with serum creatinine levels of 0.88 mg/dL (Case #16), 1.0 mg/dL (Case #23) and 1.36 mg/dL (Case #24) at their last follow-up visit.

DSA monitoring showed that the DSA directed at B50 in Case #16 decreased from pretransplant MFI of 9349 to MFI of 1911 at 1-year post-transplantation. In Case #23, pre-transplant DSA MFI of 12350 remained at the same level and the MFI was 12418 at 1-year post-transplantation. Also, pre-transplant DSA MFI of 3673 directed at HLA-Cw17 increased to MFI of 5768 at 1-year post-transplantation. This patient also developed de novo DSA directed at HLA-B42 during this time period and the MFI was 4050. There were no pre-transplant DSA above MFI >2000 in patient # 24 and this patient did not develop de novo DSA during the first 3-months of following transplantation he was monitored.

## DISCUSSION

A systematic analysis of 3073 clinical FCXM performed using a standardized protocol in an ASHI-accredited Histocompatibility Laboratory identified that 8.4% of the T cell positive FCXM are T+B-. We found that antibodies directed not only at HLA-Cw but also antibodies directed HLA-A and antibodies directed at HLA-B are associated with a T+B- FCXM.

A mechanism for the T+B- FCXM test result is the differential expression of HLA-class I antigens on T cells and B cells. HLA-Cw antigen expression, as detected using mAb DT9, was found to be higher on T cells than B cells<sup>12</sup>, and in this study, seven of 10 FCXM T+B- FCXM were observed with sera containing HLA-Cw DSA. Sera with anti-HLA-Cw IgG had also been shown by others to cause T+B- FCXM<sup>14,15</sup>. Our findings are consistent with the earlier findings that antibodies directed at HLA-Cw antigens may contribute to a T+B- FCXM. Importantly, we report that antibodies directed at HLA-A and antibodies directed at HLA-B are also associated with a T+B- FCXM.

Our correlational analyses identified a significant association between the summed MFI of class I DSA and the MCF of T cells treated with the RS but not between the summed MFI of DSA and the MCF of B cells treated with RS. The basis for the lack of a relationship is unclear but may reflect aberrant expression of HLA class I on the B cells associated with a T+B- FCXM and impaired binding anti-HLA antibodies. The positive association between the summed MFI of class I DSA and the MCF of T cells treated with RS in this study was modest. The lack of a strong linear relationship may be related to the LSA assay being a qualitative assay rather than quantitative<sup>16</sup> and possible confounding due to the presence of non-HLA antibodies. Our findings provide an explanation for the observation of Higgins et al<sup>17</sup> that a serum with an MFI of 591 was associated with a positive FCXM whereas a serum with an MFI of 4773 was associated with a negative FCXM.

We reported that the MCF of B cells treated with NCS is significantly higher than the MCF of T cells treated with NCS<sup>18</sup>. The higher B cell MCF with NCS would reduce the B cell CS observed with RS and this could be a mechanism for the T+B- FCXM result. The higher B cell MCF however is unlikely to be the major mechanism since the MCF of B cells did not differ among FCXM that were classified as T+B-, T-B+ or T+B+ tests.

It is a common practice to use a larger CS to classify a B cell FCXM as positive compared to classifying a T cell FCXM as positive<sup>19-22</sup>. Had we applied the 40 CS threshold to classify not only T cell FCXM but also B cell FCXM, 12 of 25 T+B- FCXM would be reclassified as a T+B+ FCXM. Among these 12 FCXM tests, 7 of 12 would still be classified T+ FCXM if we had applied the 50 CS used for the B cell FCXM. Thus, the higher CS used to classify a B cell FCXM test is a potential contributor to only 5 of 25 T+B- results. In this regard, the CS threshold that should be applied to classify a FCXM test as positive or negative is the Achilles's heel of this assay. In the FCXM, serum from a male donor of AB blood group and Rh negative and negative for anti-HLA-class I and class II IgG antibodies are used to establish baseline MCF of T cells and B cells and this serum is used as the NCS. The target cells are from healthy volunteers or potential donors. A predefined ratio of the fluorescence of the T cells and B cells treated with RS to the fluorescence of the corresponding cells treated with NCS is one approach to classify a FCXM<sup>6</sup>. A fluorescence value that is 2 or 3 standard deviations (SD) above the mean value observed with the NCS is also used to classify a FCXM as a positive or a negative<sup>19-23</sup>. A value that is 2 SD higher than the mean would place the observed value outside the 95% probability and a value that is 3 SD higher would place the observed value outside the 99.7% probability. However, this approach assumes normal distribution of fluorescence values. Fluorescence intensity is acquired using a logarithmic scale and is best estimated using median rather than mean, and the distribution of fluorescence values of T cells and B cells treated with NCS is seldom normally distributed. Indeed, the MCF values in the 3073 FCXM analyzed here were not distributed normally. These considerations led to



the use of IQR value to derive CS in this study. Finally, had we used 2SD or 3SD instead of IQR to develop the CS, none of the 25 T+B- results would change.

In our study, we used the same CS for classifying FCXM irrespective of whether the cells were from a living donor or a deceased donor and regardless of whether the cells were isolated from peripheral blood, spleen or lymph node. The use of same CS irrespective of the donor cell type may be of concern since Badders et al. found that HLA-class I expression is lower on B cells isolated from deceased donor blood compared to B cells isolated from spleen, lymph node or B cells isolated from living donor blood<sup>24</sup>. The source of cells used as target cells in our study was not a significant issue since 22 of 25 T+B- were performed using PBMC.

Autoantibodies directed at T cells could result in a T+B- result. In our analysis of 1475 recipient auto FCXM performed in our laboratory during 2014 to 2018 (the same vintage as the 25 T+B- results reported here), not even a single auto FCXM was T+B- (0%) and 5 were T+B+ (0.34%), 119 were T-B+ (8.17%), and 1333 of 1475 were T-B- (91.49%). Thus, a T cell autoantibody being responsible for the observed T+B- FCXM appears extremely unlikely.

There are limitations to our study. The donor cells used in our FCXM tests were not treated with pronase, and our results may not be generalizable to tests performed using pronase treated cells. Pronase treatment has been reported to “improve flow cytometric detection of HLA antibodies”<sup>25</sup> and “improve flow cytometry crossmatch results”<sup>26</sup>. However, pronase may also unmask cryptic epitopes on T cells<sup>27</sup>, elicit new reactivity to donor B cells and autologous B cells<sup>28</sup>, reduce HLA density on target cells leading to incorrect FCXM results<sup>29</sup> including false positive T cell FCXM tests<sup>30</sup>.

The donors in our study were not HLA typed at high resolution and therefore the detected antibody may not be donor HLA allele specific. The LSA assay deployed in this study may not have included

donor specific allele. These two limitations however apply to the lack of association between the summed MFI of DSA and MCF but not to the T+B- FCXM result since the B and T cells were from the same donor.

In sum, data analysis involving 3073 clinical FCXM tests performed using a standardized protocol in an ASHI accredited Histocompatibility laboratory identified that almost 10% of FCXM tests that are T+ FCXM are T+B- FCXM. We demonstrate that IgG antibodies directed at HLA- A, B and/or C locus determined antigens are associated with a T+B- result. Differential expression of HLA on T cells and B cells and/or differential binding of antibodies to T cells and B cells and CS used to qualify a FCXM test as positive or negative are potential contributors to the surprising T+B- FCXM result.

## **ACKNOWLEDGEMENTS**

We gratefully acknowledge the expert technical help of our highly dedicated histocompatibility specialists from Immunogenetics and transplantation center, The Rogosin Institute.

## REFERENCES

1. Patel R, Terasaki PI. Significance of the positive crossmatch test in kidney transplantation. *N Engl J Med.* 1969;280(14): 735-739.
2. Lee PP, Garovoy MR. Flow cytometry crossmatching: The first 10 years. *Transplantation Reviews.* 1994;8(1): 1-14.
3. Bray RA, Tarsitani C, Gebel HM, Lee JH. Clinical cytometry and progress in HLA antibody detection. *Methods Cell Biol.* 2011;103: 285-310.
4. Maguire O, Tario JD, Jr., Shanahan TC, Wallace PK, Minderman H. Flow cytometry and solid organ transplantation: a perfect match. *Immunol Invest.* 2014;43(8): 756-774.
5. Guillaume N. Improved flow cytometry crossmatching in kidney transplantation. *HLA.* 2018;92(6): 375-383.
6. Scornik JC, Clapp W, Patton PR, et al. Outcome of kidney transplants in patients known to be flow cytometry crossmatch positive. *Transplantation.* 2001;71(8): 1098-1102.
7. Lentine KL, Graff RJ, Xiao H, et al. Flow cytometry crossmatch before kidney transplantation in contemporary practice: target cell utilization, results patterns, and associated long-term graft survival. *Clin Transpl.* 2008: 253-266.
8. Graff RJ, Xiao H, Schnitzler MA, et al. The role of positive flow cytometry crossmatch in late renal allograft loss. *Hum Immunol.* 2009;70(7): 502-505.
9. Limaye S, O'Kelly P, Harmon G, et al. Improved graft survival in highly sensitized patients undergoing renal transplantation after the introduction of a clinically validated flow cytometry crossmatch. *Transplantation.* 2009;87(7): 1052-1056.
10. Norin AJ, Mondragon-Escorpizo MO, Brar A, et al. Poor kidney allograft survival associated with positive B cell - Only flow cytometry cross matches: a ten year single center study. *Hum Immunol.* 2013;74(10): 1304-1312.
11. Pellegrino MA, Belvedere M, Pellegrino AG, Ferrone S. B peripheral lymphocytes express more HLA antigens than T peripheral lymphocytes. *Transplantation.* 1978;25(2): 93-95.

12. Honger G, Krahenbuhl N, Dimeloe S, Stern M, Schaub S, Hess C. Inter-individual differences in HLA expression can impact the CDC crossmatch. *Tissue Antigens*. 2015;85(4): 260-266.
13. Daar AS, Fuggle SV, Fabre JW, Ting A, Morris PJ. The detailed distribution of MHC Class II antigens in normal human organs. *Transplantation*. 1984;38(3): 293-298.
14. Good DJ, Zhang A, Kemesky J, Stopczynski N, Labs A. Previously believed to be nonsensical crossmatch results, explained by anti-HLA-C antibodies. *Human Immunol*. 2017;78: 1-266.
15. Inlow J, Steller P, Eltayeb A, et al. Case study: Positive T-cell flow crossmatch (Tfxm)/negative B-cell Flow crossmatch (Bfxm) can be mediated by a class I antibody. *Human Immunol*. 2011;72: S154–S154.
16. Sullivan HC, Liwski RS, Bray RA, Gebel HM. The Road to HLA Antibody Evaluation: Do Not Rely on MFI. *Am J Transplant*. 2017;17(6): 1455-1461.
17. Higgins R, Hathaway M, Lowe D, et al. Blood levels of donor-specific human leukocyte antigen antibodies after renal transplantation: resolution of rejection in the presence of circulating donor-specific antibody. *Transplantation*. 2007;84(7): 876-884.
18. Putheti P, Sharma VK. Determining Channel Shift Cutoff in T-Cell and B-Cell Flow Cytometry Crossmatch. *Exp Clin Transplant*. 2020.
19. Kotb M, Russell WC, Hathaway DK, Gaber LW, Gaber AO. The use of positive B cell flow cytometry crossmatch in predicting rejection among renal transplant recipients. *Clin Transplant*. 1999;13(1 Pt 2): 83-89.
20. Lobashevsky AL, Senkbeil RW, Shoaf J, et al. Specificity of preformed alloantibodies causing B cell positive flow crossmatch in renal transplantation. *Clin Transplant*. 2000;14(6): 533-542.
21. Karpinski M, Rush D, Jeffery J, et al. Flow cytometric crossmatching in primary renal transplant recipients with a negative anti-human globulin enhanced cytotoxicity crossmatch. *J Am Soc Nephrol*. 2001;12(12): 2807-2814.

22. de Moraes P, Fagundes I, Cardone JM, et al. Accuracy of the median channel shift in the flow cytometry for predicting complement dependent cytotoxicity crossmatching in kidney transplant candidates. *Transpl Immunol.* 2019;52: 27-31.
23. Adebisi OO, Gralla J, Klem P, et al. Clinical Significance of Pretransplant Donor-Specific Antibodies in the Setting of Negative Cell-Based Flow Cytometry Crossmatching in Kidney Transplant Recipients. *Am J Transplant.* 2016;16(12): 3458-3467.
24. Badders JL, Jones JA, Jeresano ME, Schillinger KP, Jackson AM. Variable HLA expression on deceased donor lymphocytes: Not all crossmatches are created equal. *Hum Immunol.* 2015;76(11): 795-800.
25. Vaidya S, Cooper TY, Avandsalehi J, et al. Improved flow cytometric detection of HLA alloantibodies using pronase: potential implications in renal transplantation. *Transplantation.* 2001;71(3): 422-428.
26. Apithy MJ, Desoutter J, Gicquel A, et al. Pronase treatment improves flow cytometry crossmatching results. *HLA.* 2017;90(3): 157-164.
27. Szewczyk K, Barrios K, Magas D, et al. Flow cytometry crossmatch reactivity with pronase-treated T cells induced by non-HLA autoantibodies in human immunodeficiency virus-infected patients. *Hum Immunol.* 2016;77(6): 449-455.
28. Hart JD, Lutz CT, Jennings CD, et al. Falsely incompatible B-cell flow cytometry crossmatch after pronase treatment: a case report. *Transplant Proc.* 2015;47(3): 831-833.
29. Hetrick SJ, Schillinger KP, Zachary AA, Jackson AM. Impact of pronase on flow cytometric crossmatch outcome. *Hum Immunol.* 2011;72(4): 330-336.
30. Park H, Lim YM, Han BY, Hyun J, Song EY, Park MH. Frequent false-positive reactions in pronase-treated T-cell flow cytometric cross-match tests. *Transplant Proc.* 2012;44(1): 87-90.

**Table 1. Donor HLA antibodies Associated with T+B- FCXM test result**

Case #	HLA-Class I <sup>a</sup>			HLA-Class II <sup>a</sup>	
	A	B	Cw	DR	DQ
Mean Fluorescent Intensity					
1	A1=1287 A74=238	B49=924	Cw7=133	-	-
2	A1=5779	B37=465	-	-	-
3	A2=2286 6	B44=186 B49=110	-	-	-
4	A3=3026	-	Cw12=36	-	DQ8=211
5	A11=103	-	-	-	DQ6=746
6	A11=238	-	-	-	DQ6=265
7	A11=628	-	-	-	-
8	A23=869 A68=193	B52=433 2	-	-	-
9	A24=159	-	-	-	-
10	A29=361	-	-	-	-
11	A30=655 8	-	Cw17=11 229	DR11=21 DR13=27	-
12	A68=426	B8=2353	-	-	-
13	-	B7=7433	Cw12=58	-	-
14	-	B39=908	-	-	-
15	-	B48=503	-	-	-
16	-	B50=934	-	-	-
17	-	B53=887	-	-	-
18	-	-	Cw2=150	-	-
19	-	-	Cw2=705	DR53=71	DQ9=258
20	-	-	Cw4=243	-	-
21	-	-	Cw5=185	-	DQ4=105
22	-	-	Cw15=17	-	-
23	A30=123	-	Cw17=36	-	-
24	A1=212	-	-	-	-
25	A= 1403	B57=174	-	-	-

<sup>a</sup>Sera were tested for anti-HLA-class I (HLA-A/B/C) and anti-HLA-class II (HLA-DR/DQ/DP) IgG antibodies using LABScreen LS1A04 and LS2A01 assays. Briefly, 10 µl of serum samples were incubated with 2.5 µl of microbeads coated with HLA-class I or HLA-class II antigens, respectively, at 22<sup>0</sup>C for 30 minutes. The specimens were then washed three times in 1X wash buffer. The microbeads were treated with PE labeled goat-anti-human IgG polyclonal antibody at 22<sup>0</sup>C for 30 minutes in dark and washed three times in wash buffer. The LABScan 100/200 was used for acquisition of microbeads and data analysis. Data were then exported to HLA fusion software for analysis.



**Table 2. Characteristics of T+B- FCXM tests**

Case #	Cell Source	Donor Type	Flow Cytometry Crossmatch						Luminex Single Antigen Bead Assay <sup>a</sup>	
			T Cell			B Cell			HLA-Class I	HLA-Class I and II
			Negative Control Serum	Recipient Serum	Channel Shift	Negative Control Serum	Recipient Serum	Channel Shift		
			Median Channel Fluorescence			Median Channel Fluorescence	Mean Fluorescent Intensity (Summed)			
1	Peripheral Blood	Living	233	287	54	270	307	37	38057	38324
2	Peripheral Blood	Living	246	286	40	279	328	49	11835	12988
3	Peripheral Blood	Deceased	264	351	87	250	299	49	53187	53187
4	Peripheral Blood	Living	236	277	41	246	252	6	6880	10550
5	Peripheral Blood	Deceased	183	254	71	395	353	-42	10595	18806
6	Spleen	Deceased	230	293	63	296	342	46	4828	10147
7	Peripheral Blood	Living	242	293	51	254	296	42	6573	6630
8	Peripheral Blood	Living	265	314	49	252	283	31	38147	40475
9	Peripheral Blood	Living	229	298	69	239	283	44	15939	15939
10	Peripheral Blood	Living	199	245	46	196	229	33	6245	6245
11 <sup>b</sup>	Peripheral Blood	Living	197	258	61	302	336	34	19347	25033
12	Peripheral Blood	Deceased	231	279	48	217	264	47	8102	8206
13	Peripheral Blood	Living	256	298	42	248	291	43	13932	14263
14	Peripheral Blood	Deceased	240	300	60	212	255	45	12688	12688
15	Peripheral Blood	Deceased	219	275	56	222	270	48	5230	5502
16	Peripheral Blood	Living	268	311	43	279	326	47	9430	10236
17	Peripheral Blood	Living	244	290	46	244	278	34	9014	9384
18 <sup>b</sup>	Peripheral Blood	Living	229	274	45	292	328	36	15519	16941
19	Peripheral Blood	Deceased	179	221	42	195	208	13	10579	24073
20	Peripheral Blood	Deceased	228	287	59	273	272	-1	2607	4173
21	Peripheral Blood	Deceased	220	291	71	196	229	33	40667	52353
22	Peripheral Blood	Living	295	336	41	308	346	38	17886	18863
23	Lymph Node	Deceased	193	264	71	194	243	49	17127	22569
24	Peripheral Blood	Living	184	225	41	190	234	44	212	715
25	Spleen	Deceased	227	267	40	251	282	31	6699	7634

<sup>a</sup>Sera were tested for anti-HLA-class I (HLA-A/B/C) and anti-HLA-class II (HLA-DR/DQ/DP) IgG antibodies using LABScreen LS1A04 and LS2A01 assays as described under Table 1. The LABScan 100/200 was used for acquisition of microbeads and data analysis. Data were then exported to HLA fusion software for analysis. MFI of HLA-class I antigens and MFI of class II antigens were summed separately.

<sup>b</sup>Case 11 and 18 are the same patient with different donors; DSA MFI, including those below 2000 MFI threshold for a positive test, was summed.

## FIGURE LEGENDS

### **Figure 1. Frequency and distribution of flow cytometry crossmatch test results.**

(A) A total 3609 clinical flow cytometry crossmatch (FCXM) tests were performed from February 2014 to April 2018 at the Immunogenetics and Transplantation Center (IGT), an ASHI- accredited histocompatibility laboratory. The crossmatches were performed for selecting a compatible kidney donor. Auto FCXM test and repeat donor FCXM tests using the same serum/ donor cell combination were excluded and 3073 donor FCXM tests were included for downstream data analysis. Among these 3073 FCXM tests, 1963 were reported as negative FCXM (63.9%) and the remaining 1110 were reported as FCXM positive (37.1%) tests.

(B) Among the positive 1110 FCXM tests, 811 were T-B+ (73%), 274 were T+B+ (24.7%) and 25 were T+B- (2.3%).

### **Figure 2. Correlational analysis of summed MFI of donor HLA antibodies in recipient's serum and the MCF and T cells and B cells treated with the recipient serum.**

Donor HLA antibodies were identified using the LSA assay and the MFI was summed.

(A) A significant and positive association was observed between the summed MFI of class I DSA and the MCF of T cells treated with RS;

(B) There was no significant association between the MCF of B cells treated with RS and the summed MFI of class I DSA; and

(C) There was no significant association between the MCF of B cells treated with RS and the summed MFI of class I and class II DSA.

Spearman rank correlation coefficient  $r_s$  and associated P values were calculated are included in each panel.

### **Figure 3. Distribution of T cell MCF and B cell MCF with cells treated with negative control serum.**

(A) Individual and median and 25<sup>th</sup> percentile and 75<sup>th</sup> percentile of MCF of B cells treated with the negative control serum are shown for the 25 T+B-FCXM tests, 274 T+B+ FCXM tests and the 811 T-B+ FCXM tests.

(B) Individual and median and 25<sup>th</sup> percentile and 75<sup>th</sup> percentile of MCF of T cells treated with the negative control serum are shown for the 25 T+B-FCXM tests, 274 T+B+ FCXM tests and the 811 T-B+ FCXM tests. P values calculated using the Kruskal-Wallis test and included in each panel.

**Figure 4. Flow cytometry acquisition setup and representative T+B- FCXM test results.**

(A) The lymphocyte subpopulation within the peripheral blood mononuclear cells were gated using forward scatter (FSC) versus side scatter (SSC) plot.

(B) T cells (CD3 PerCP) and B cells (CD19 PE) were gated on the lymphocyte population. (C-D) Median channel fluorescence (MCF) of goat-anti-human IgG FITC fluorescence on T cells and on B cells were measured using histograms. Channel shift was calculated by subtracting the MCF with negative control serum from the MCF with recipient serum.

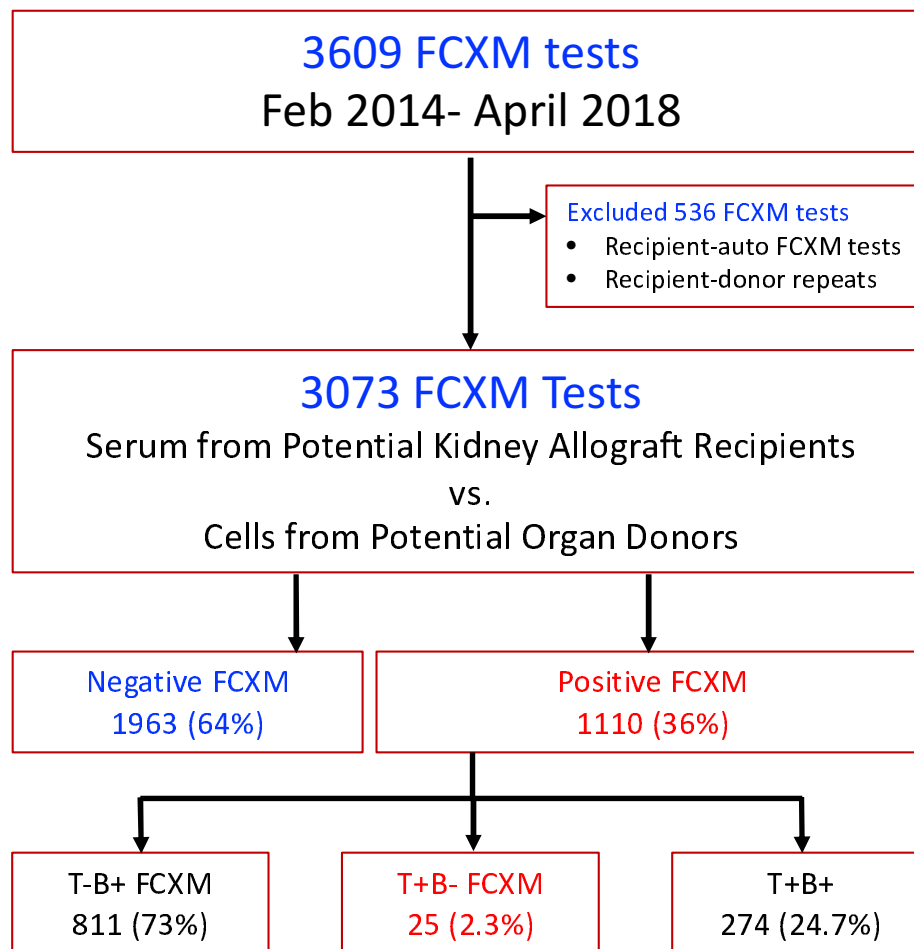
(C) A representative T+B- FCXM test in which the 50 CS threshold used to score a B cell FCXM contributing to a T+B- FCXM result. Note a 50 CS to score the T cell as a positive test would still result in a T+B- FCXM.

(D) A representative T+B- FCXM test in which the higher B cell CS threshold did not contribute to the T+B- test result.

In Figure 4C-D, the MCF values are per 1024 channel scale values and the histograms are displayed in 5-decade log<sup>10</sup> scale (FACS Diva software, versions 7.1.3 and 8.0.1).

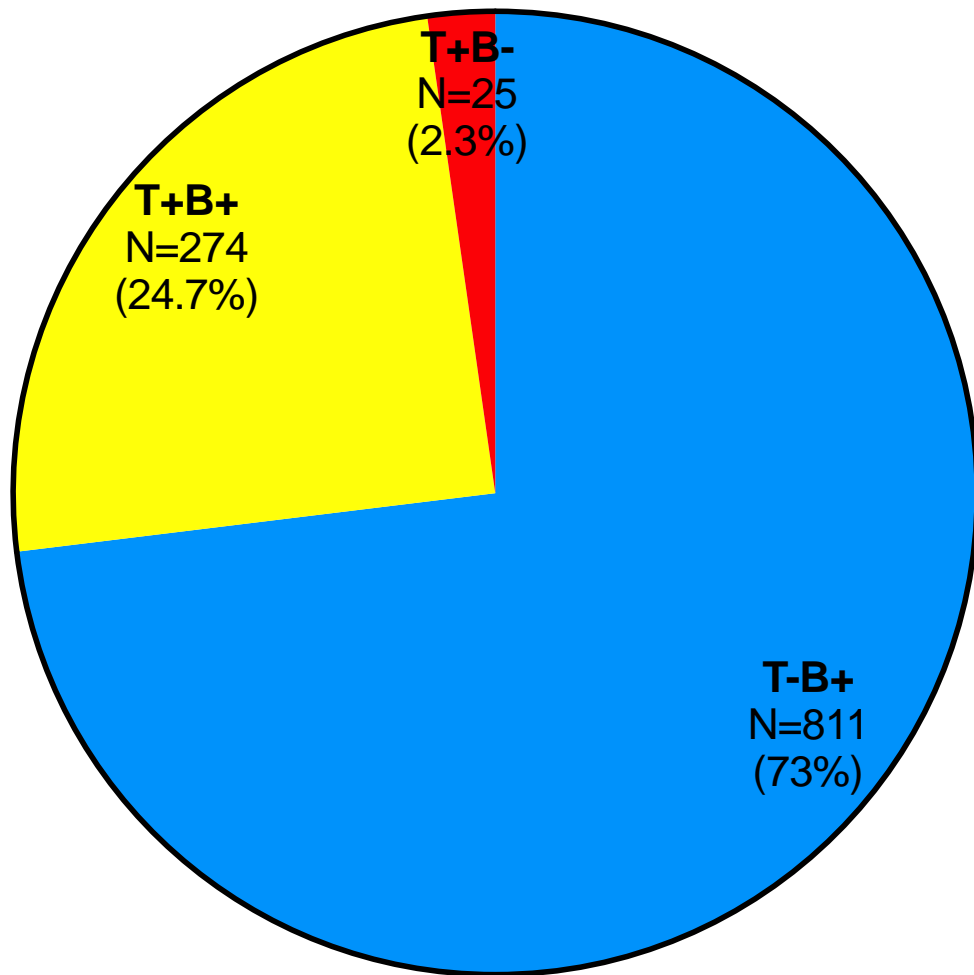
**Figure 1. Frequency and distribution of flow cytometry crossmatch test results.**

**A**



B

**Positive FCXM**  
**N=1110**



**Figure 2. Correlational analysis of summed MFI of donor HLA antibodies in recipient's serum and the MCF and T cells and B cells treated with the recipient serum.**

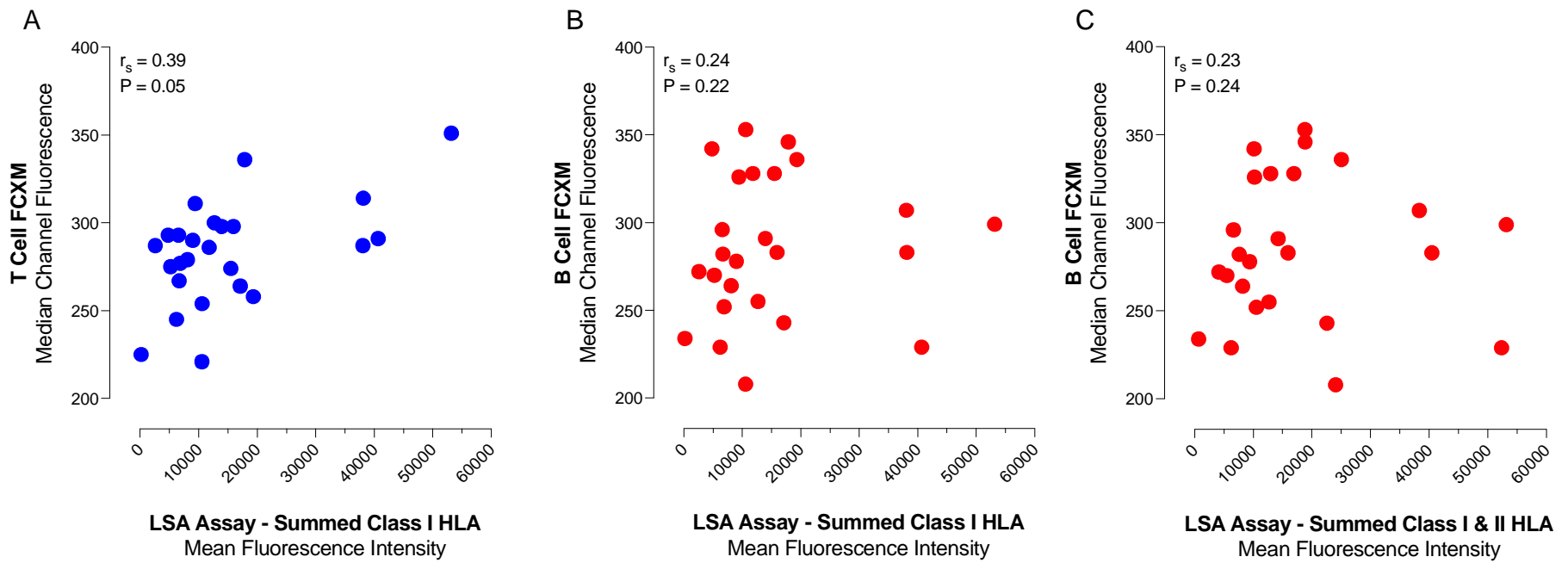
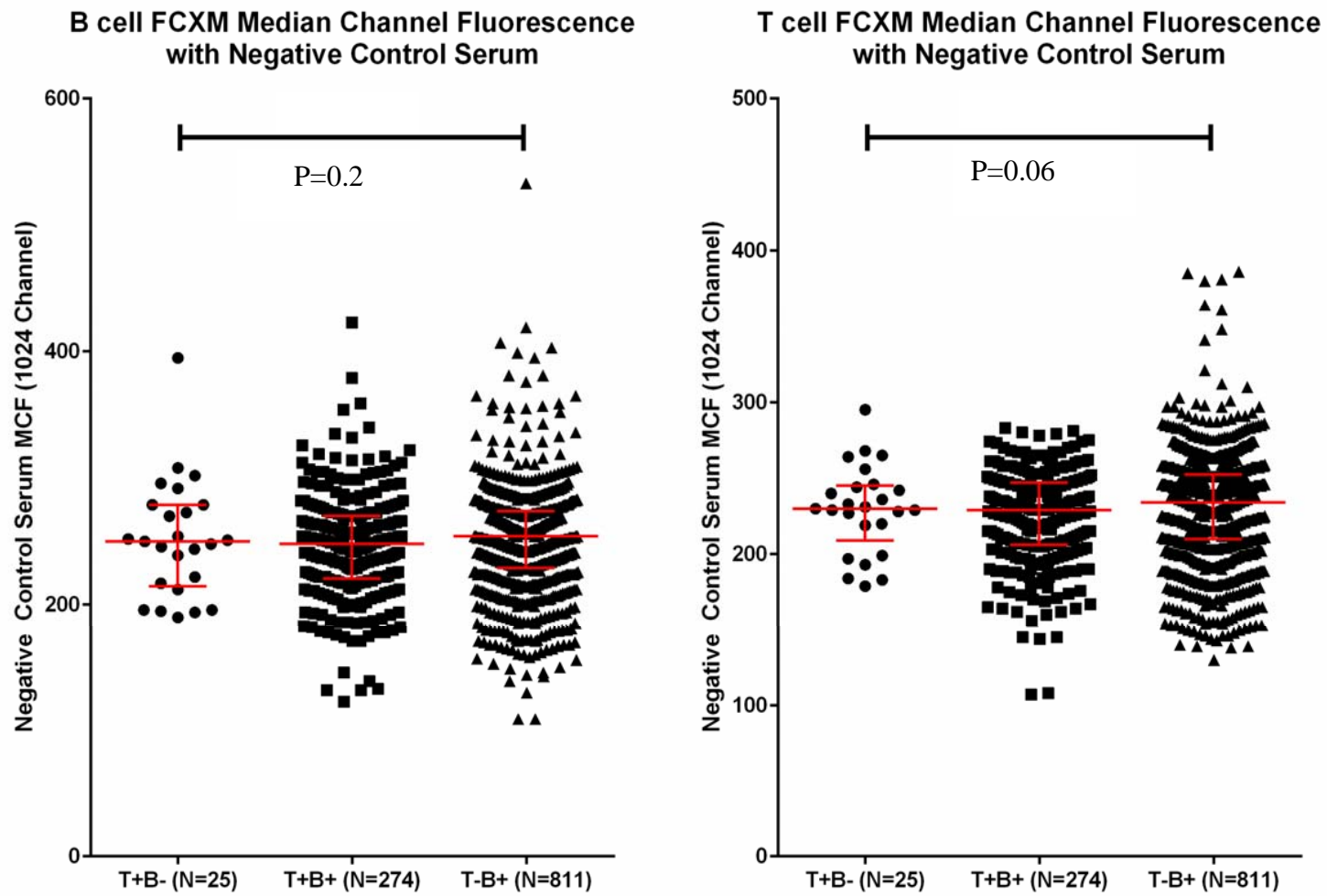


Figure 3. Distribution of B cell MCF and T cell MCF with cells treated with negative control serum.







**Figure 4. Flow cytometry acquisition setup and representative T+B- FCXM test results.**

